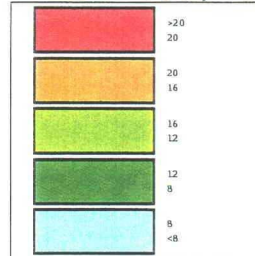
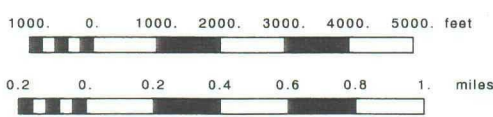


Thickness, ft



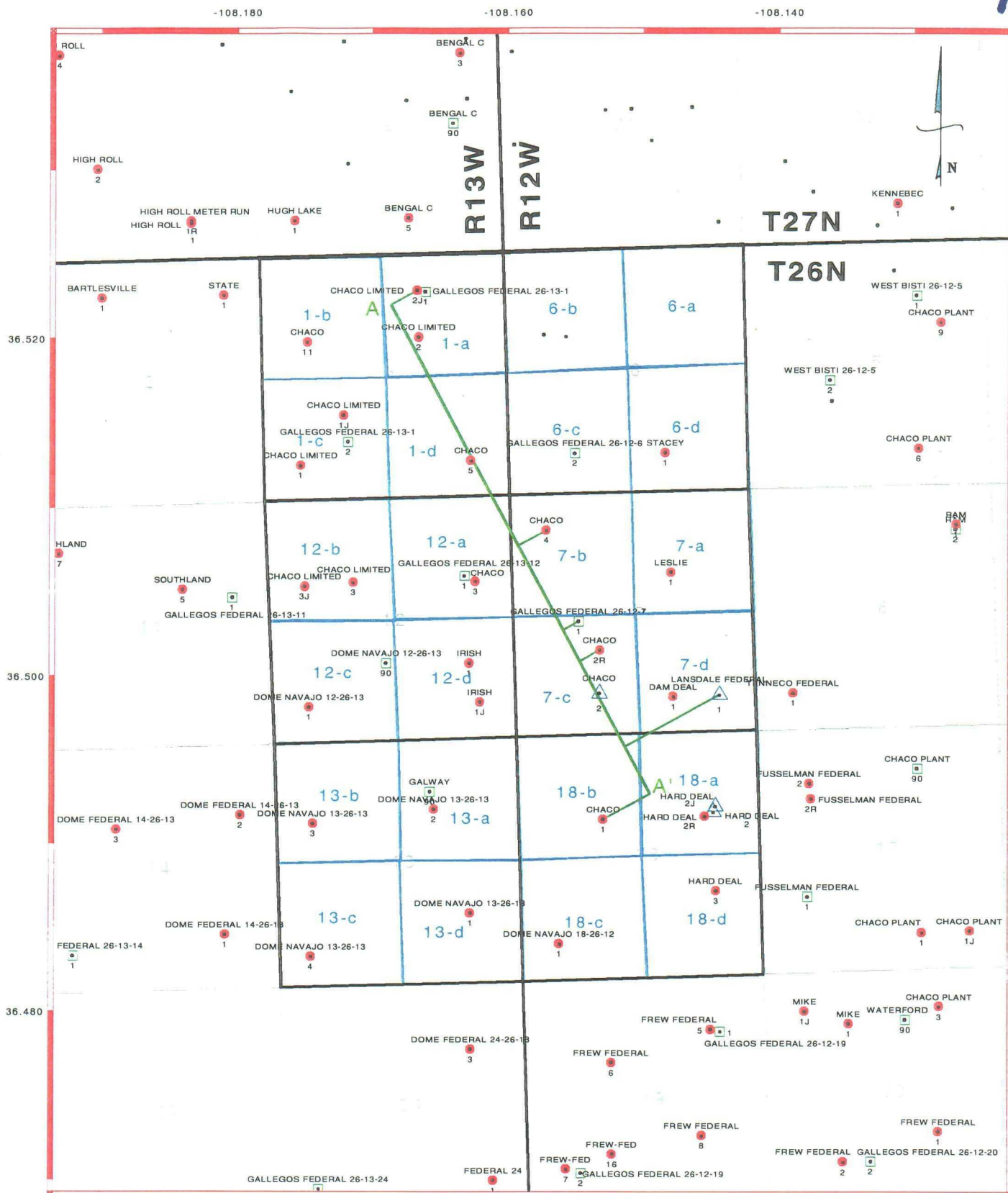
- Completed Interval (Petroleum Information)
- Pictured Cliffs
- Fruitland Coal
- Pictured Cliffs and Fruitland Coal



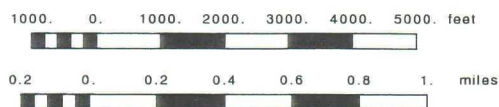
San Juan County, New Mexico Pictured Cliffs Unit 1 Gross Thickness (ft)		
Scale 1:36000	1" = 3,000'	6/19/98
UTM 12 N. Meters	npu1pllc.gpl	WBA



15



- Completed Interval (Petroleum Information)
- Pictured Cliffs
  - Fruitland Coal
  - ▲ Pictured Cliffs and Fruitland Coal



### San Juan County, New Mexico Base Map

Scale 1:36000.	1" = 3,000'	6/19/98
UTM 12 N. Meters	base2_11.gpf	WBA