

Western Cretaceous Coal Seam Project

**Summary of the Cooperative Research Well
FC Federal #12**

Operated by Mesa Operating Limited Partnership

**Submitted to the
Gas Research Institute**

GRI Topical Report No. GRI-92/0015

**GRI Manager
Mr. R. A. McBane
Coal and Shales Resources**

**Prepared by
Resource Enterprises, Inc.
February 7, 1992**

**T.J. Pratt
J.C. Close
M.J. Mavor**


BEFORE EXAMINER CATANACH	
OIL CONSERVATION DIVISION	
M/W	EXHIBIT NO. 49
CASE NO:	11996

Cross Section
1

SCHUMBERGER

ELECTRICAL LOG

Location of Well



10906

6807

6809

6796

COMPANY: Superior Oil Co.

WELL: Hightower #2-3

FIELD: Wildcat

LOCATION: NW. SE. SW. 3-25N-7W

COUNTY: Rio Arriba

STATE: New Mexico

COUNTY: Rio Arriba 10906

WELL: Hightower #2-3

COMPANY: Superior Oil Co.

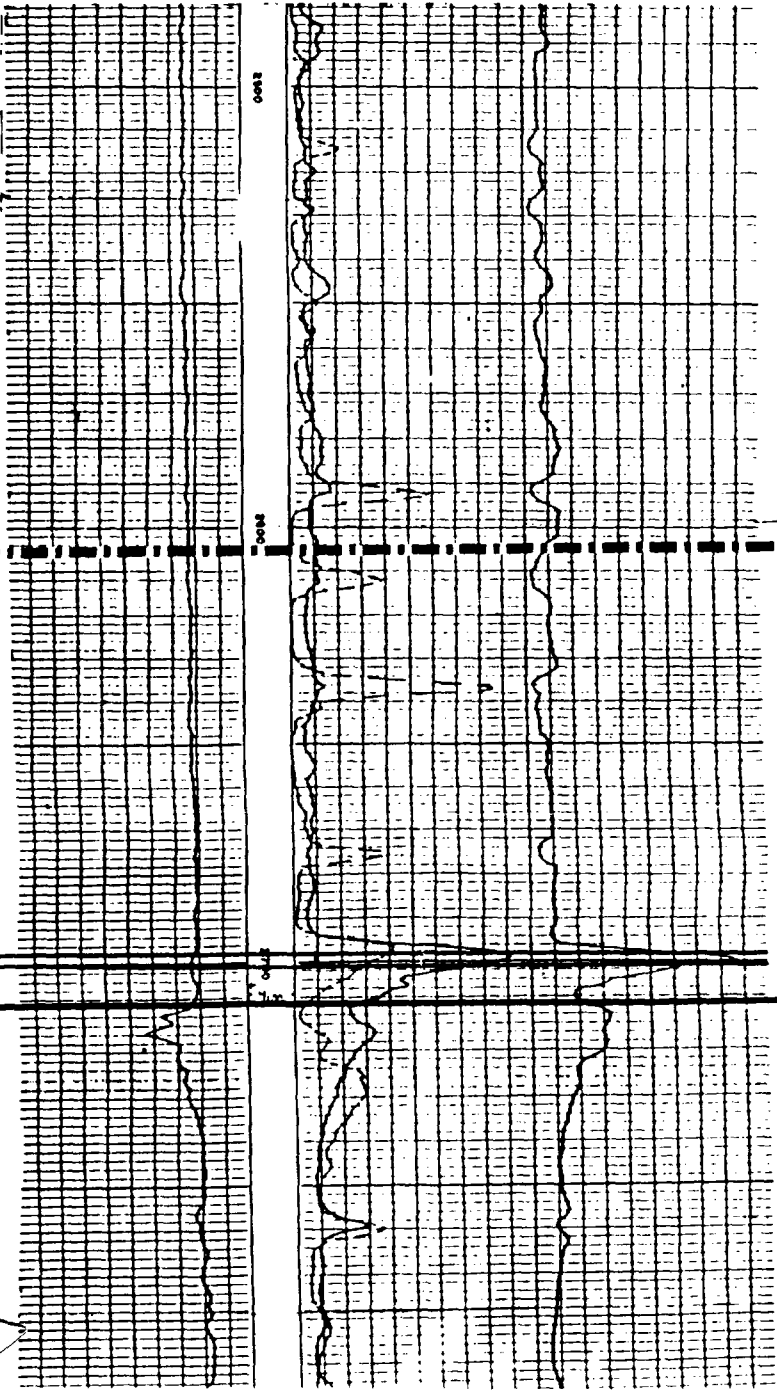
	One	Two			
Date	5-29-54	5-29-54			
First Reading	2820	2853			
Last Reading	211	2820			
Footage Measured	2609	33			
Cut Pipe Shovel	211	211			
Cut Pipe Driller	211	211			
Max. Depth Reached	2820	2854			
Bottom Driller	2840	2855			
Drill Bit	RDB	RDB			
Drill Mud	Oil Emul	Oil Emul			
• Density	8.8	8.8			
• Viscosity	58	58			
• Resistivity	2.4 58	2.4 58			
• Resistivity Log	1.3 108	1.3 108			
• PI	7.8	7.8			
• Water Loss	1.8	1.8			
Maximum Time	108	108			
Drill Size	3 3/4"	3 3/4"			
Drill Pipe	6"	6"			
• ID	5 1/2"	5 1/2"			
• ID	6' 8"	6' 8"			
• ID	2 Hr. 14	2 Hr. 14			
• ID	714	714			
• ID	Kuhlmann	Kuhlmann			
• ID	Caine	Caine			

REMARKS

Run one mud from flow line

Run two mud from flow line

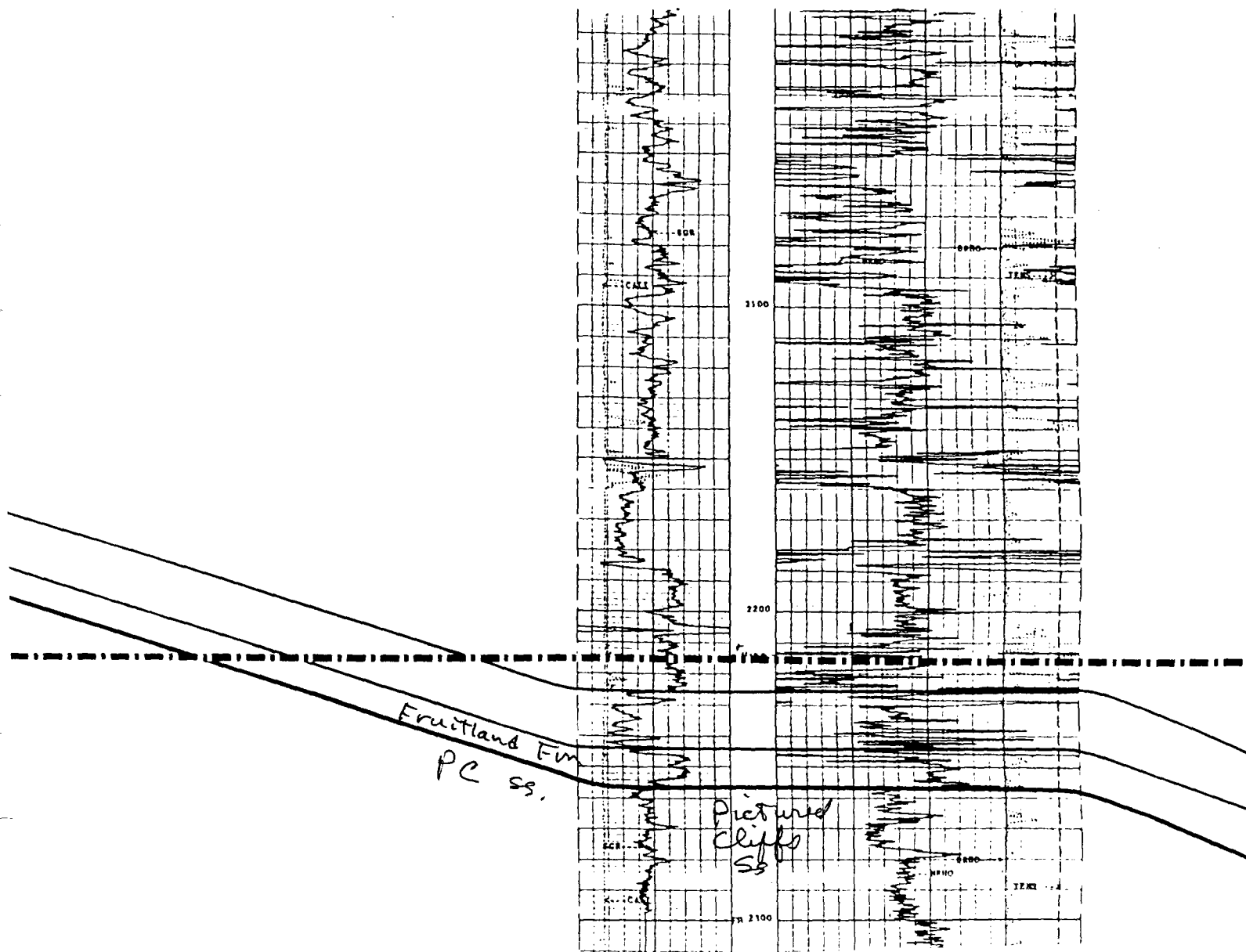
Run two includes rerun of run one

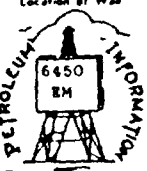


Fr
FRUITLAND
Pictured
Cliffs
Pi
Sc

Cross section 2

Schlumberger		SPONTANEOUS COMPENSATED NEUTRON- LITHO-DENSITY	
COMPANY		Mesa Operating Ltd. & REL	
WELL		F.C. Federal #12	
FIELD		Pabco	
COUNTY		Rio Arriba	STATE New Mexico
1460 PHL & 900 PHL		Date Service OK ML LST/CHK NOT	
APR SERIAL NO.	33	TRIP	26 IN 7 W
Permanent System	6 L	Wet	3300.0 F
Log Measured From	5.8	10.0 F	above Pore System
Drilling Measured From	5.8	BL 3300.0 F	
Core	05-JA-1080		
Run in	One		
Depth Surface	2280.0 F		
Depth Logger (Base)	2280.0 F		
Open Log Interval	2279.0 F		
Top Log Interval	2280.0 F		
Coring Depth	0.5/8 @ 270 F		
Coring Logger	228.0 F		
SN Size	1 7/8 in		
Type Hole in Hole	One		
Wash	2.00 LBS	20.0 S	
PHL Line	6.0	6.0 CR	
Series of Single	PLDPLR		
Run @ Mass. Temp.	2740 CHAM @ 84.0 DEG		
Run @ Mass. Temp.	2280 CHAM @ 84.0 DEG		
Run @ Mass. Temp.	2280 CHAM @ 84.0 DEG		
Extreme Heat Time	None	Cat	
Run @ BHT	2281 CHAM @ 87.0 DEG		
Check out Depth	7.2 @ 2000		
Logger on Surface	7.2 @ 2000		
Max. Run. Temp.	171 DEG		
Log. Location	6708	Fractured	
Runners by	Shim		
Reviewed by	Walter, Ole S Hughes		



S C H O U B E R G E R					
ELECTRICAL LOG					
Location of Well  Bureau DT - 62901 a b a c		COMPANY, Pubco Develop- ment Inc. Well, Hughes #34-3 FIELD, South Blanco LOCATION, 34 26N 7W COUNTY, Rio Arriba STATE, New Mexico FRING No.		COUNTY, Rio Arriba 6150E FIELD OR NE SW SW LOCATION 34 26N 7W Well, Hughes #34-3	
RUN NO	ONE				
Date	1-27-53				
First Reading	2246				
Last Reading	2007				
Footage Measured	2009				
Cog Shoe Sinker	37				
Cog Shoe Depth	36				
Most Depth Reached	2246				
Bottom Driller	2250				
Depth Down	RDB				
Shut Pressure	081 - Quot - Crue				
- Density	1.0				
- Viscosity	32				
- Reservoir	32.4.65				
- Reservoir Sat	3.4.82				
- pH	W				
- Water Loss	CC 30 Min				
Maximum Temp °F	82				
Bit Size	8 3/4" FR. Csg. to 2155				
Spuds - AM	16"				
- M	64"				
- AD	15'8"				
24 Hr Time	1 hour				
Truck No	1718FARM				
Recorded By	Hillier				
Witnessed By	Peters				
REMARKS					
Run one mud from flow line.					

Cross section 1

