

Exhibit No. 6
Reopened Case No.
11089
Oct. 17, 1996



STATE OF NEW MEXICO
ENERGY, MINERALS AND NATURAL RESOURCES DEPARTMENT
OIL CONSERVATION DIVISION
2040 S. PACHECO
SANTA FE, NEW MEXICO 87505
(505) 827-7131

September 6, 1996

Burlington Resources/Meridian Oil, Inc.
c/o Kellahin and Kellahin
Attention: W. Thomas Kellahin
P.O. Box 2265
Santa Fe, New Mexico 87504-2265

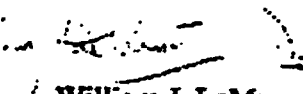
Administrative Order NSL-3704

Dear Mr. Kellahin:

Reference is made to an application from Ms. Peggy Bradfield with Burlington Resources/Meridian Oil, Inc. of Farmington, New Mexico dated August 16, 1996 and to your letter dated September 3, 1996, for approval to drill the proposed Ute Well No. 22 (API No. 30-045-29395) at an unorthodox gas well location in order to test the Barker Dome-Desert Creek Pool 2000 feet from the North line and 1925 feet from the East line (Unit G) of Section 17, Township 32 North, Range 14 West, NMPM, as projected into the unsurveyed Ute Mountain Indian Reservation, San Juan County, New Mexico. At this time the N/2 of said Section 17 shall be dedicated to said well to form a standard 320-acre gas spacing and proration unit for said pool pursuant to Rule 2 of the "Special Rules and Regulations for the Barker Dome-Desert Creek Pool", as promulgated by Division Order No. R-46-A, dated February 13, 1995.

By authority granted me under the provisions of Rule 5 of said special pool rules, the location of said Ute Com Well No. 22 is hereby approved.

Sincerely,

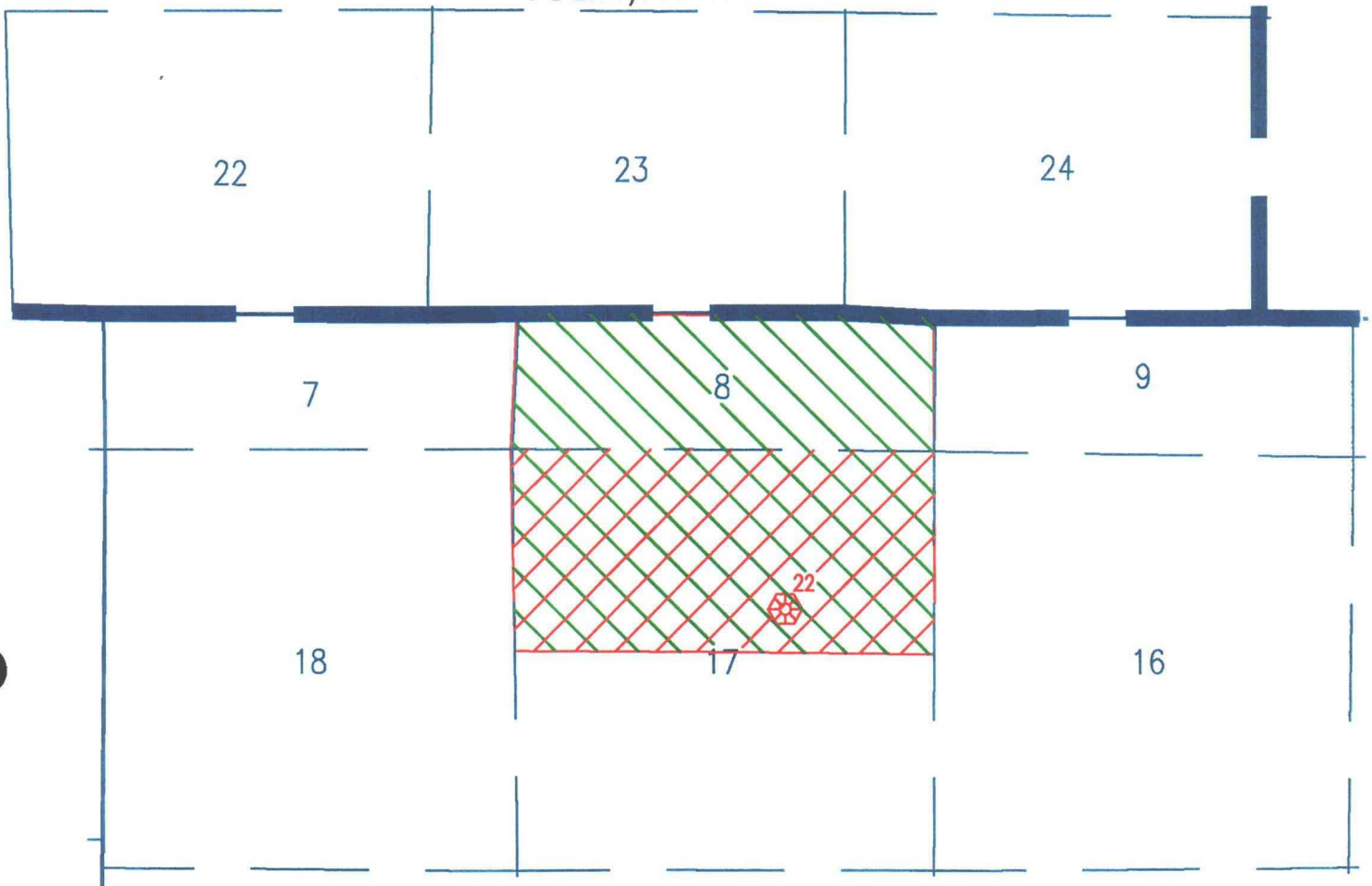

William J. LeMay
Director

WJL/MES/kv

cc: Oil Conservation Division - Aztec
U. S. Bureau of Land Management - Durango, Colorado

UTE # 22 WELL SPACING UNITS

T32N,R14W



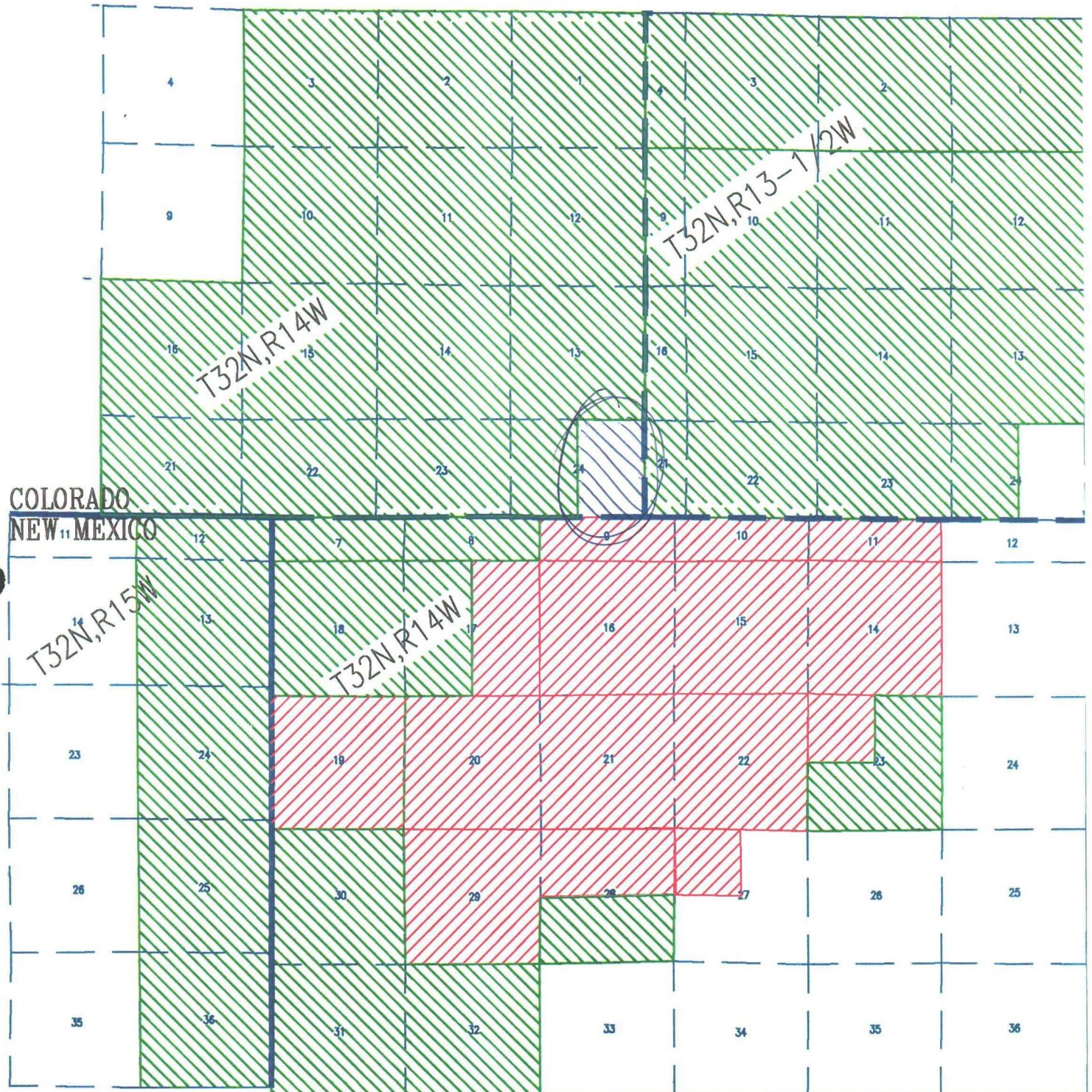
NMOCD SPACING



BLM SPACING

Burlington Exhibit No. 7
Reopened Case No. 11089
October 17, ~~25~~ 1996

BARKER DOME POOL BOUNDARY
NEW MEXICO AND COLORADO



NMOCD POOL BOUNDARY



BLM POOL BOUNDARY
INCLUDES NMOCD BOUNDARY

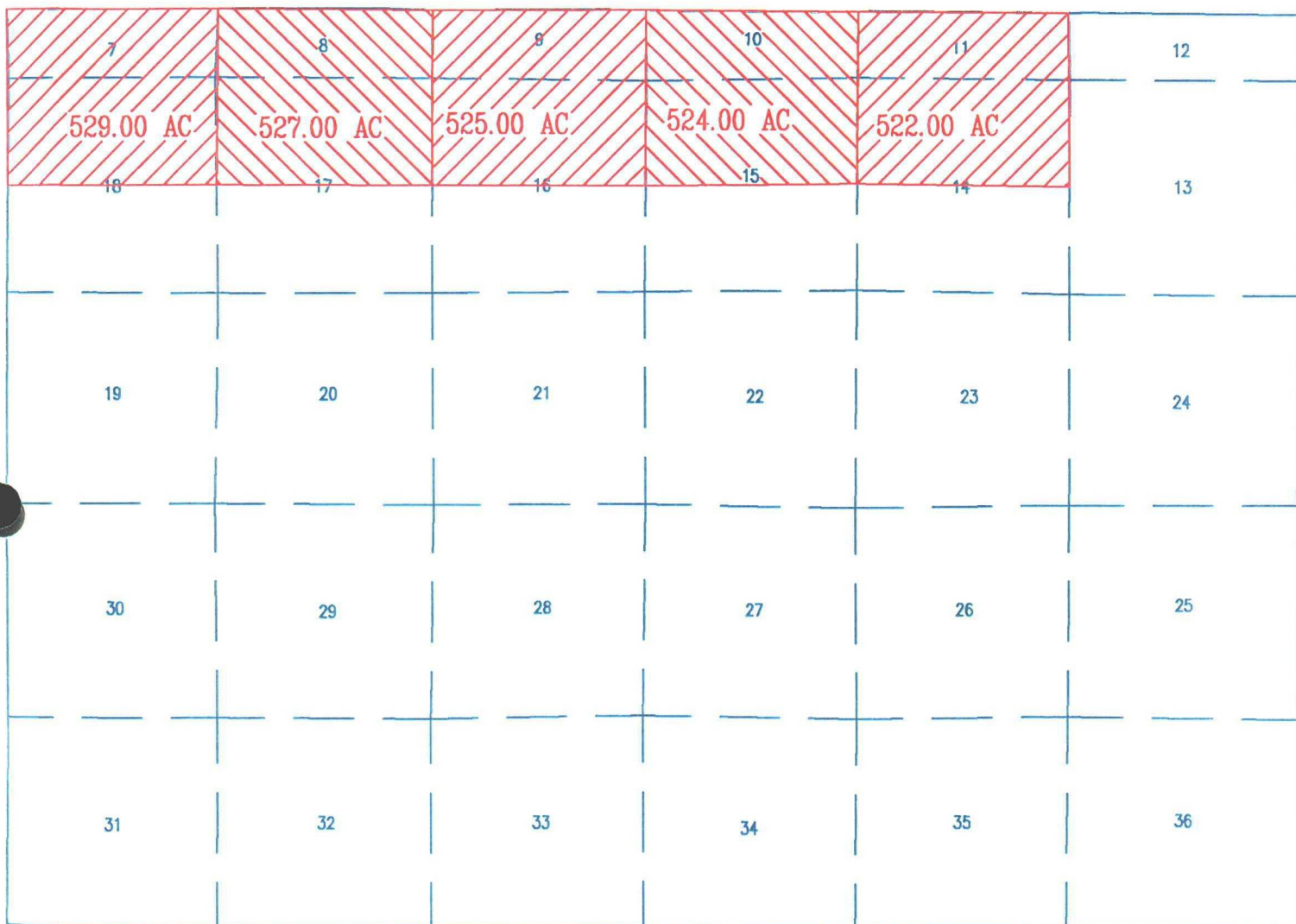
Barker Dome-Ismay Pool
160 Acre Equicalent
Spacing Units
T32N,R14W
San Juan Co., New Mexico

209 AC 7	207 AC 8	205 AC 9	204 AC 10	202 AC 11	12
18	17	16	15	14	13
19	20	21	22	23	24
30	29	28	27	26	25
31	32	33	34	35	36

Barker Dome-Ismay Formation
160 Acre Equivalent
Spacing Units
T32N,R15W
San Juan Co., New Mexico

7	8	9	10	11	211 AC12
18	17	16	15	14	13
19	20	21	22	23	24
30	29	28	27	26	25
31	32	33	34	35	36

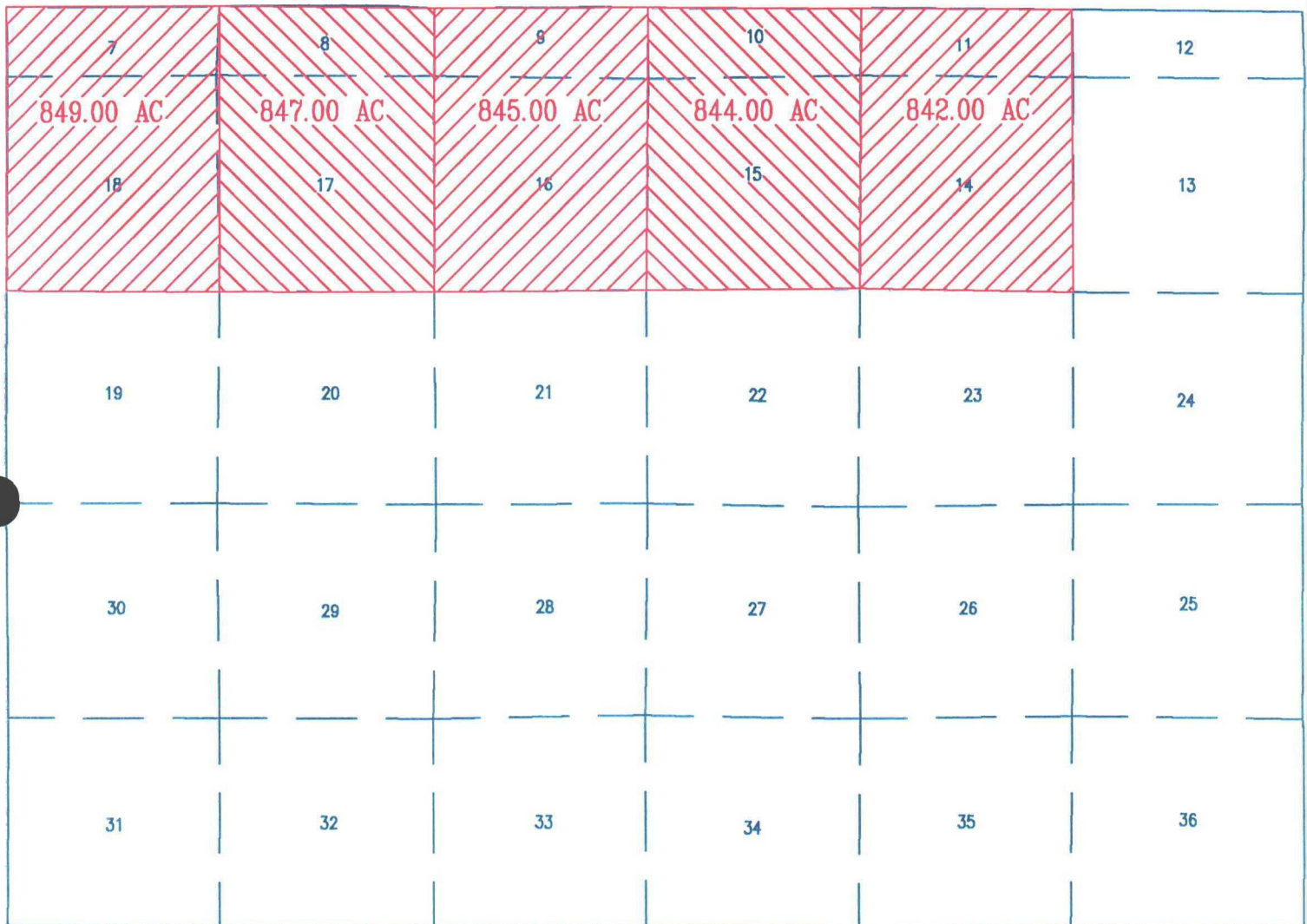
Barker Dome-Desert Creek and Akah/Upper Barker Creek Pools
320 Acre Equivalent
Spacing Units
T32N, R14W
San Juan Co. New Mexico



Desert Creek and Upper Barker Creek Formations
Equivalent 320 Acre Spacing Units
T32N,R15W
San Juan Co., New Mexico

7	8	9	10	11	12
18	17	16	15	14	13
19	20	21	22	23	24
30	29	28	27	26	25
31	32	33	34	35	36

Barker Dome-Lower Barker Creek/Alkali Gulch Pool
640 Acre Equivalent Spacing Units
T32N, R14W
San Juan Co., New Mexico



Barker Dome—Lower Barker Creek / Alkali Gulch Pool
Equivalent 640.00 Acre Spacing Units
T32N,R15W
San Juan Co., New Mexico

7	8	9	10	11	12
18	17	16	15	14	13
19	20	21	22	23	24
30	29	28	27	26	25
31	32	33	34	35	36