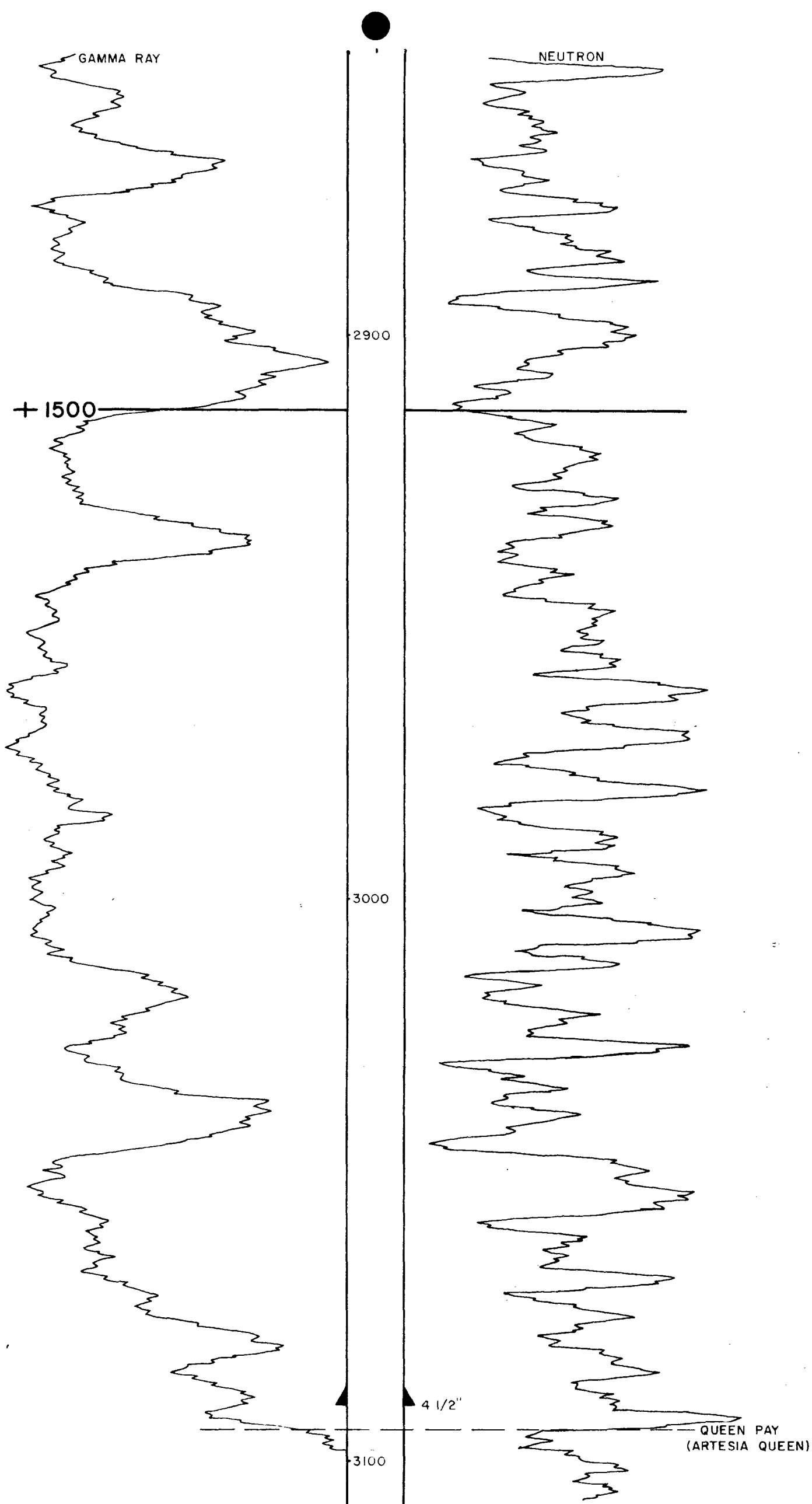


CONTINENTAL OIL COMPANY
STATE R-34 NO. 1
ELEVATION 4413' D.F.



Set 7 5/8" csg @ 307' w/200 sx (circ), using 2 centralizers.
Set 4 1/2" csg @ 3090' w/710 sx (cement to 1350'), using 10 centralizers,
90 scratchers.

TD 3108'

Completed, thru open hole, for IP of 900 BOPD, no water, based on
4-hour test of 150 BO flowing thru 3/4" choke on 2" tubing with
59.9 MCF gas. GOR 66. TP: 40# CP: 50#

Pay: Queen, from 3094' to 3108' (open hole).

Tops: Anhydrite	1365	Base Salt	2153	Seven Rivers	2544
Salt	1465	Yates	2307	Queen Pay	3094
				(ARTES QUEEN)	

Completed: 5/27/56. Tested: 5/28/56.