

WELL LOCATION AND ACREAGE DEDICATION PLAT

Form C-102
Supersedes C-12
Effective 1-1-65

All distances must be from the outer boundaries of the Section.

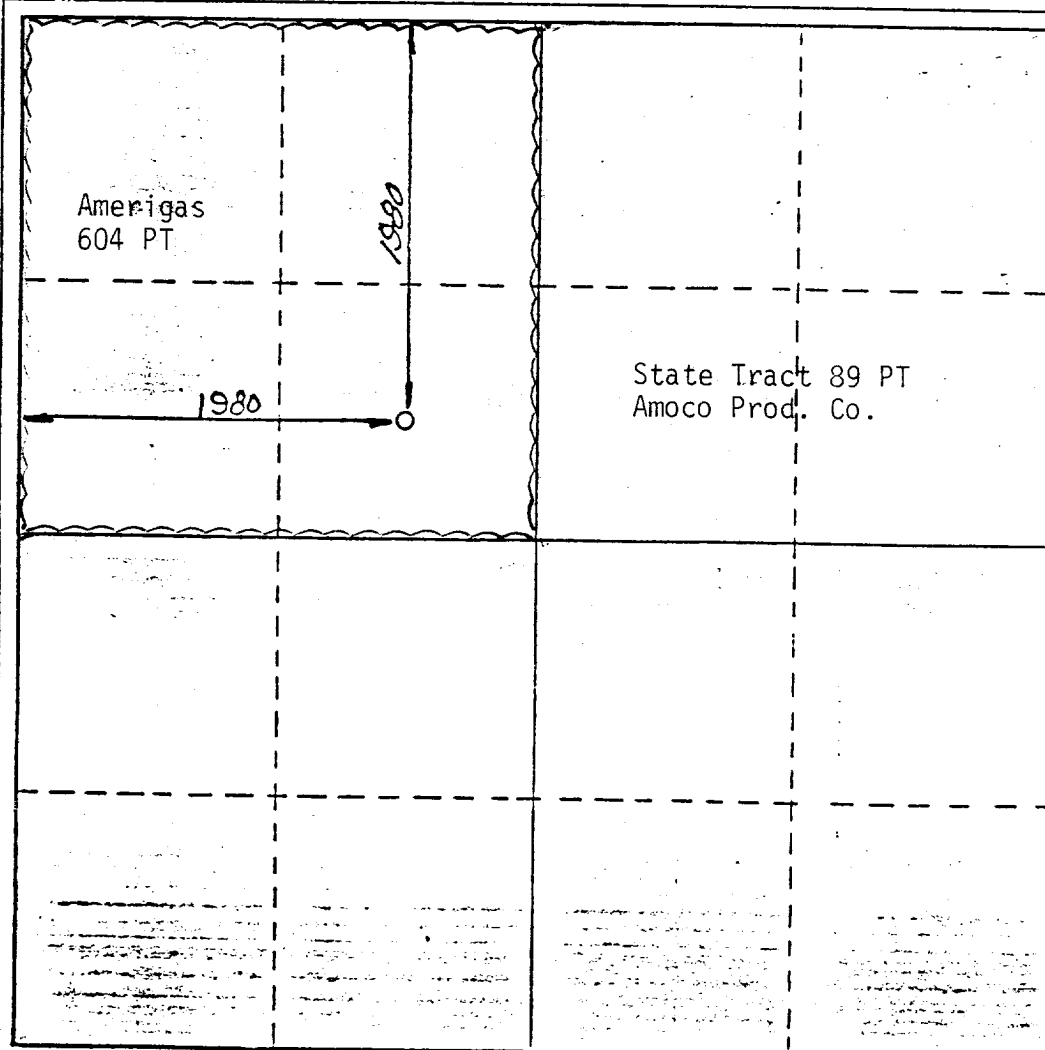
Operator AMOCO		Lease BDCDGV		Well No. 1830 0217	
STATE OF NEW MEXICO					
Unit Letter F	Section 2	Township T18N	Range R30E	County HARDING	
Actual Footage Location of Well:					
1980 feet from the		NORTH		line and 1980 feet from the	
				WEST	
Ground Level Elev. 4445	Producing Formation Tubb		Pool West Bravo Dome 640 Acre Area		Dedicated Acreage: 640 Acres

1. Outline the acreage dedicated to the subject well by colored pencil or hachure marks on the plat below.
2. If more than one lease is dedicated to the well, outline each and identify the ownership thereof (both as to working interest and royalty).
3. If more than one lease of different ownership is dedicated to the well, have the interests of all owners been consolidated by communitization, unitization, force-pooling, etc?

Yes No If answer is "yes," type of consolidation Unitization

If answer is "no," list the owners and tract descriptions which have actually been consolidated. (Use reverse side of this form if necessary.) _____

No allowable will be assigned to the well until all interests have been consolidated (by communitization, unitization, forced-pooling, or otherwise) or until a non-standard unit, eliminating such interests, has been approved by the Commission.



CERTIFICATION

I hereby certify that the information contained herein is true and complete to the best of my knowledge and belief.

Name	<i>John A. McElyea</i>
Position	<i>Asst. Adm. Analyst</i>
Company	<i>Amoco Prod. Co.</i>
Date	<i>1-22-85</i>

I hereby certify that the well location shown on this plat was plotted from field notes of actual surveys made by me or under my supervision, and that the same is true and correct to the best of my knowledge and belief.

DEC. 2, 1980

Date Surveyed	<i>12/2/80</i>
Signature	<i>D. F. Shields</i>
Registered Professional Engineer and/or Land Surveyor	OR
N.M.L.S. No.	5103
Surveyor's Seal	5103

