

| | |
|------------------------|---|
| NO. OF COPIES RECEIVED | |
| DISTRIBUTION | |
| SANTA FE | |
| FILE | ✓ |
| U.S.G.S. | |
| LAND OFFICE | |
| OPERATOR | |

API # 30-021-20208

5A. Indicate Type of Lease
STATE REC

5. State Oil & Gas Lease No.

APPLICATION FOR PERMIT TO DRILL, DEEPEN, OR PLUG BACK

1a. Type of Work
b. Type of Well DRILL DEEPEN PLUG BACK
OIL WELL GAS WELL OTHER C02 SINGLE ZONE MULTIPLE ZONE

2. Name of Operator
Amoco Production Company

3. Address of Operator
P.O. Box 606, Clayton, New Mexico 88415

4. Location of Well
UNIT LETTER G LOCATED 1650 FEET FROM THE North LINE
AND 1650 FEET FROM THE East LINE OF SEC. 30 TWP. 17N R. 33E NE1/4

7. Well Name
Bravo Dome Carbon Dioxide Gas Unit

8. Form of Lease Name
Bravo Dome Carbon Dioxide Gas Unit

9. Well No.
1733 301G

10. Field and Pool, or Wildcat
Bravo Dome Carbon Dioxide Gas Unit 640-Acre Area

12. County
Harding

19. Proposed Depth
2900'

19A. Formation
Tubb

20. Rotary or C.T.
Rotary

21. Elevations (Show whether DF, HI, etc.)
4675' GL

21A. Kind & Status Plug. Bond
Blanket-on-file

21B. Drilling Contractor
N/A

22. Approx. Date Work will start
September, 1984

PROPOSED CASING AND CEMENT PROGRAM

| SIZE OF HOLE | SIZE OF CASING | WEIGHT PER FOOT | SETTING DEPTH | SACKS OF CEMENT | EST. TOP |
|--------------|----------------|-----------------|---------------|-------------------|----------|
| 12-1/4" | 9-5/8" | 32.30# | 700' | circulate | surface |
| 8-3/4" | 7" | 15, 20# | 2900' | Tieback to 9-5/8" | surface |

Propose to drill and equip well in the Tubb formation. After reaching TD logs will be run and evaluated. Perforate and stimulate as necessary in attempting commercial production.

Mud Program: 0 - 700' Native Spud Mud
700 - TD KCL Salt Water Gel-Starch

BOP Diagram attached.

APPROVAL VALID FOR 180 DAYS
PERMIT EXPIRES 3-26-85
UNLESS DRILLING UNDERWAY

0+5-NMOCD,SF 1-J.R.Barnett,HOU Rm 21.156 1-F.J.Nash,HOU Rm.4.206 1-WF,C 1-WF,H 1-Susp
1-JSM 1-Amerada 1-Amerigas 1-Cities Service 1-Conoco 1-CO2 in Action 1-Sun
1-Excelsior 1-Tex 1-Exxon

ABOVE SPACE DESCRIBE PROPOSED PROGRAM IF PROPOSAL IS TO DEEPEN OR PLUG BACK, GIVE DATA ON PRESENT PRODUCTIVE ZONE AND PROPOSED NEW PRODUCTIVE ZONE. GIVE BLOWOUT PREVENTER PROGRAM, IF ANY.

hereby certify that the information above is true and complete to the best of my knowledge and belief.

igned John S. McElya Title Asst. Adm. Analyst Date 9-21-84

APPROVED BY Roy Johnson TITLE DISTRICT SUPERVISOR DATE 9-27-84

CONDITIONS OF APPROVAL, IF ANY:

NEW MEXICO OIL CONSERVATION COMMISSION
WELL LOCATION AND ACREAGE DEDICATION PLAT

Form C-102
Supersedes C-128
Effective 1-1-61

All distances must be from the outer boundaries of the Section.

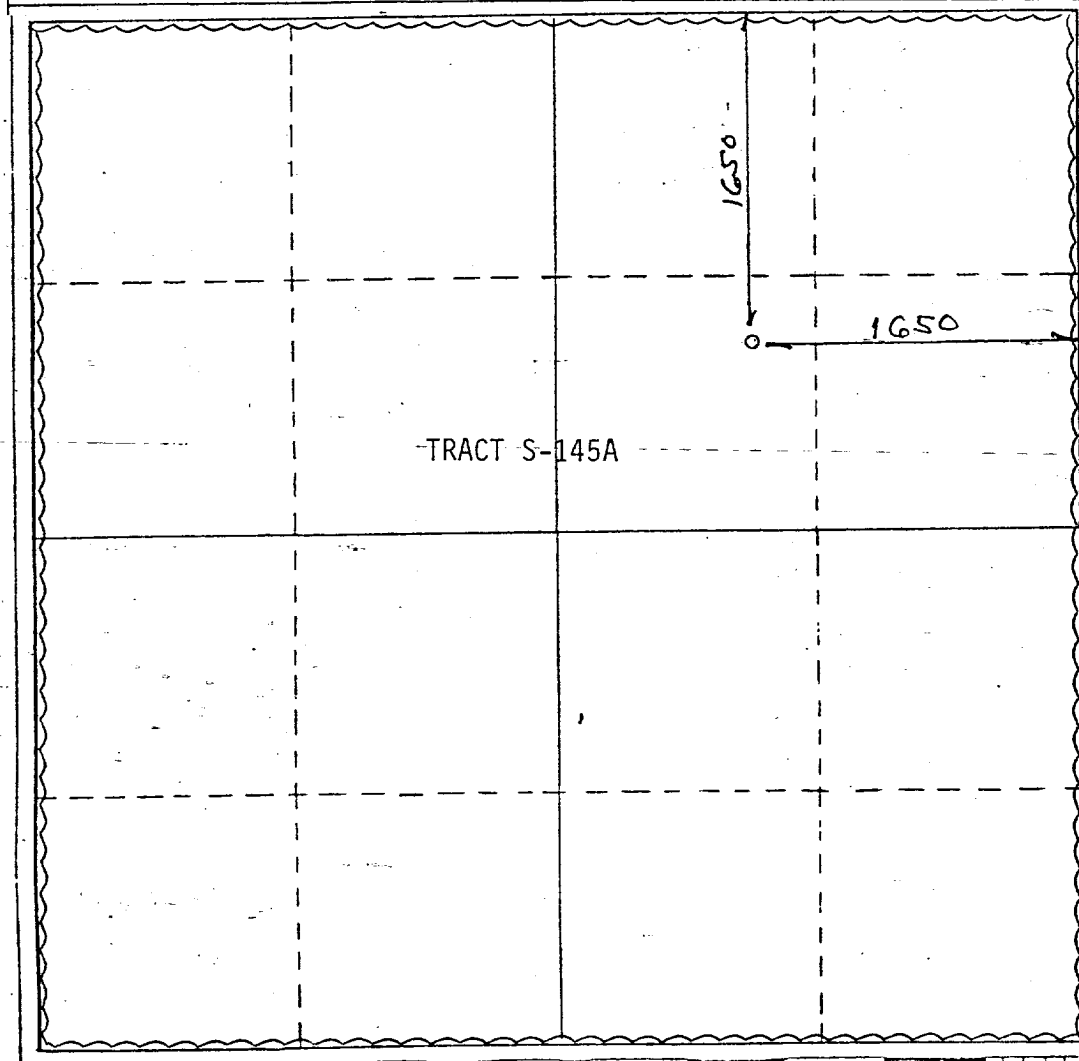
| | | | | | |
|--|------------------------------------|--|----------------------|--------------------------|--|
| Operator AMOCO PRODUCTION COMPANY | | Lease Bravo Dome Carbon Dioxide Gas Unit | | | Well No. 1733 301G |
| Unit Letter G | Section 30 | Township T17N | Range R33E | County HARDING | |
| Actual Footage Location of Well: 1650 feet from the NORTH line and 1650 feet from the EAST line | | | | | |
| Ground Level Elev. 4675 | Producing Formation Tubb | Pool Bravo Dome 640 Acre Area | | | Dedicated Acreage: 640 Acres |

1. Outline the acreage dedicated to the subject well by colored pencil or hachure marks on the plat below.
2. If more than one lease is dedicated to the well, outline each and identify the ownership thereof (both as to working interest and royalty).
3. If more than one lease of different ownership is dedicated to the well, have the interests of all owners been consolidated by communitization, unitization, force-pooling, etc?

Yes No If answer is "yes," type of consolidation Unitization

If answer is "no," list the owners and tract descriptions which have actually been consolidated. (Use reverse side of this form if necessary.) _____

No allowable will be assigned to the well until all interests have been consolidated (by communitization, unitization, forced-pooling, or otherwise) or until a non-standard unit, eliminating such interests, has been approved by the Commission.



CERTIFICATION

I hereby certify that the information contained herein is true and complete to the best of my knowledge and belief.

Name John S. McElyea
 Position Asst. Admin. Analyst
 Company Amoco Production Company
 Date 9-21-84

I hereby certify that the well location shown on this plat was plotted from field notes of actual surveys made by me or under my supervision, and that the same is true and correct to the best of my knowledge and belief.

SEPT 21 1984
 Date Surveyed
John S. McElyea
 Registered Professional Engineer
 and/or Land Surveyor
 N.M.L.S. NO. 5103
 Certificate No. _____

STANDARD 2000 PSI W.P. BOP STACK

1. Blow-out preventers may be manually operated.
2. All equipment must be in good condition, 2,000 psi W.P. (4,000 psi test) minimum.
3. Bell nipple above blow-out preventer shall be same size as casing being drilled through.
4. Kelly cock to be installed on kelly.
5. Full opening safety valve 2,000 psi w.p. (4,000 psi test) minimum must be available on rig floor at all times with proper connection or subs to fit any tool joint in string.
6. Spool or cross may be eliminated if connections are available in the lower part of the blow-out preventer body.
7. Double or space saver type preventers may be used in lieu of two single preventers.
8. BOP rams to be installed as follows:
 - Top preventer - Drill pipe or casing rams
 - Bottom preventer - Blind rams

*Amoco District Superintendent may reverse location of rams.
9. Extensions and hand wheels to be installed and braced at all times.
10. Manifold valves may be gate or plug metal to metal seal 2" minimum.

