

NO. OF COPIES RECEIVED		
DISTRIBUTION		
SANTA FE		
FILE		
U.S.G.S.		
LAND OFFICE		
OPERATOR		

NEW MEXICO OIL CONSERVATION COMMISSION

API # 30-033-20024
Form C-101
Revised 1-1-65

APPLICATION FOR PERMIT TO DRILL, DEEPEN, OR PLUG BACK

1a. Type of Work		7. Unit Agreement Name	
b. Type of Well DRILL <input checked="" type="checkbox"/> DEEPEN <input type="checkbox"/> PLUG BACK <input type="checkbox"/> OIL WELL <input type="checkbox"/> GAS WELL <input type="checkbox"/> OTHER CO2 SINGLE ZONE <input checked="" type="checkbox"/> MULTIPLE ZONE <input type="checkbox"/>		8. Farm or Lease Name Wooten & Reardon	
2. Name of Operator Mobil Oil Corporation		9. Well No. 1	
3. Address of Operator 3 Greenway Plaza East, Suite 800, Houston, Texas 77046		10. Field and Pool, or Wildcat Wildcat	
4. Location of Well UNIT LETTER F LOCATED 2288 FEET FROM THE north LINE AND 1726 FEET FROM THE west LINE OF SEC. 9 TWP. 20N RGE. 23E NMPM		12. County Mora	
19. Proposed Depth 3500'		19A. Formation Granite Wash	20. Rotary or C.T. Rotary
21. Elevations (Show whether DF, RT, etc.) Ground - 5963	21A. Kind & Status Plug. Bond On File	21B. Drilling Contractor Aztec Well Servicing Co.	22. Approx. Date Work will start As Soon As Possible

PROPOSED CASING AND CEMENT PROGRAM

SIZE OF HOLE	SIZE OF CASING	WEIGHT PER FOOT	SETTING DEPTH	SACKS OF CEMENT	EST. TOP
11"	8-5/8"	23# Misco	0 - 350'	Circulate	Surface
7-7/8"	4-1/2"	9.5# K-55	0 - 3500'	Circulate	Surface

BLOWOUT PREVENTER PROGRAM:

Casing String	Equip. Size & API Series	No. & Type	Test Pressure PSI
Surface	8" 600	1MG & 1 PR	3000

APPROVAL VALID FOR 90 DAYS UNLESS DRILLING COMMENCED
EXPIRES 9/27/77

IN ABOVE SPACE DESCRIBE PROPOSED PROGRAM: IF PROPOSAL IS TO DEEPEN OR PLUG BACK, GIVE DATA ON PRESENT PRODUCTIVE ZONE AND PROPOSED NEW PRODUCTIVE ZONE. GIVE BLOWOUT PREVENTER PROGRAM, IF ANY.

I hereby certify that the information above is true and complete to the best of my knowledge and belief.

Signed A. D. Bond A. D. Bond Title Regulatory Engr. Coordinator Date June 17, 1977

(This space for State Use)

APPROVED BY Carl Ulrey TITLE SENIOR PETROLEUM GEOLOGIST DATE 6/28/77

CONDITIONS OF APPROVAL, IF ANY: COLLECT AND SUBMIT SAMPLES FOR NEW MEXICO OIL CONSERVATION COMMISSION AT LEAST 100 FEET DEEPER

NEW MEXICO OIL CONSERVATION COMMISSION
WELL LOCATION AND ACREAGE DEDICATION PLAT

Form C-102
Supersedes C-128
Effective 1-1-65

All distances must be from the outer boundaries of the Section.

Operator Mobil Oil Corporation			Lease Wooten & Reardon			Well No. 1		
Unit Letter F	Section 9	Township 20N	Range 23 E	County Mora				
Actual Footage Location of Well: 2288 feet from the north line and 1726 feet from the west line								
Ground Level Elev. 5963		Producing Formation Granite Wash		Pool Wildcat		Dedicated Acreage: 40 Acres		

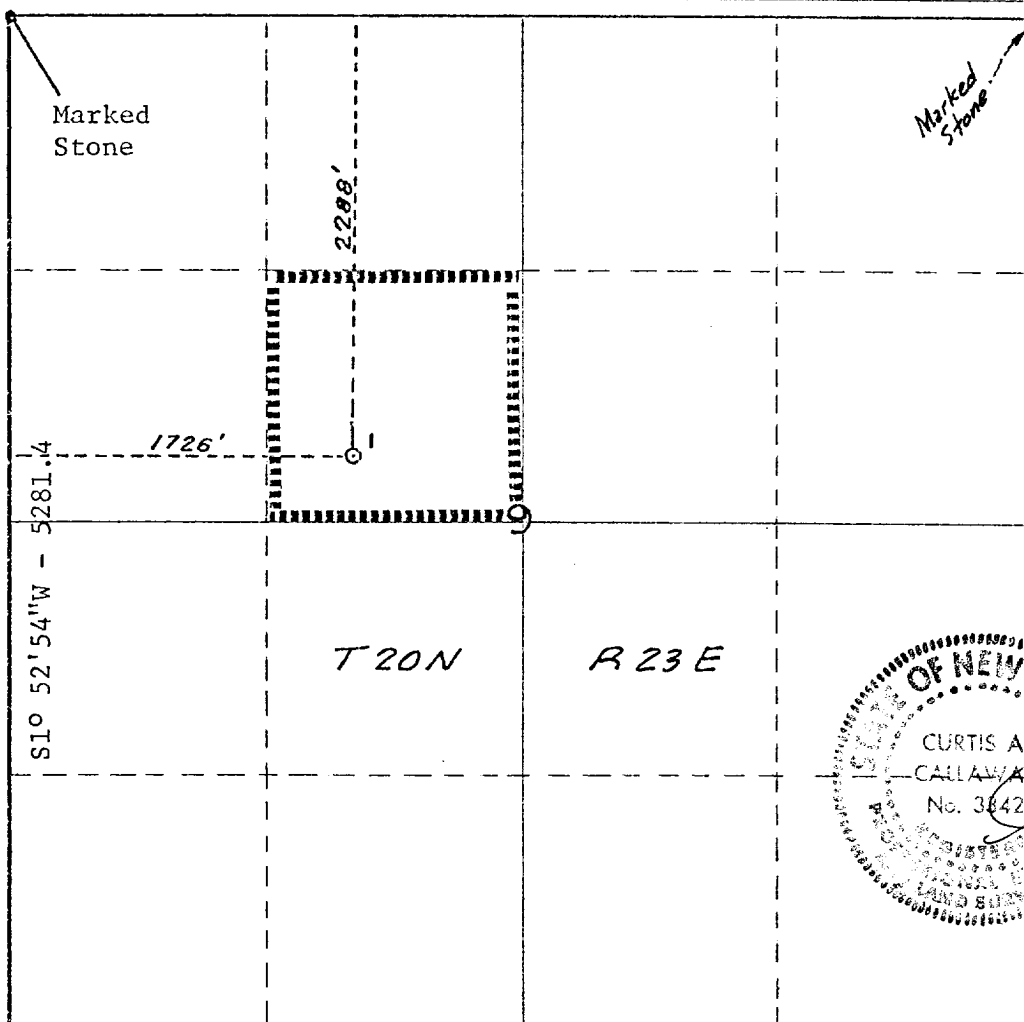
- Outline the acreage dedicated to the subject well by colored pencil or hachure marks on the plat below.
- If more than one lease is dedicated to the well, outline each and identify the ownership thereof (both as to working interest and royalty).
- If more than one lease of different ownership is dedicated to the well, have the interests of all owners been consolidated by communitization, unitization, force-pooling, etc?

Yes No If answer is "yes," type of consolidation _____

If answer is "no," list the owners and tract descriptions which have actually been consolidated. (Use reverse side of this form if necessary.) _____

No allowable will be assigned to the well until all interests have been consolidated (by communitization, unitization, forced-pooling, or otherwise) or until a non-standard unit, eliminating such interests, has been approved by the Commission.

S88° 42' 02"E - 5253.4'



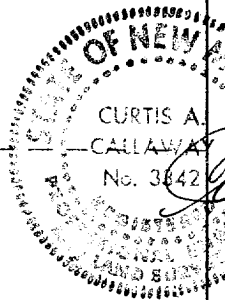
CERTIFICATION

I hereby certify that the information contained herein is true and complete to the best of my knowledge and belief.

A. D. Bond

Name	A. D. Bond
Position	Regulatory Engr. Coordinator
Company	Mobil Oil Corporation
Date	June 17, 1977

I hereby certify that the well location shown on this plat was plotted from field notes of actual surveys made by me or under my supervision, and that the same is true and correct to the best of my knowledge and belief.



Date Surveyed	May 26, 1977
Registered Professional Engineer and/or Land Surveyor	<i>Curtis A. Callaway</i>

Curtis A. Callaway

Certificate No.

3342

0 330 660 990 1320 1650 1980 2310 2640 2000 1500 1000 500 0