

NEW MEXICO OIL CONSERVATION COMMISSION
WELL LOCATION AND ACREAGE DEDICATION PLAT

Form C-102
Supersedes C-128
Effective 1-1-65

All distances must be from the outer boundaries of the Section.

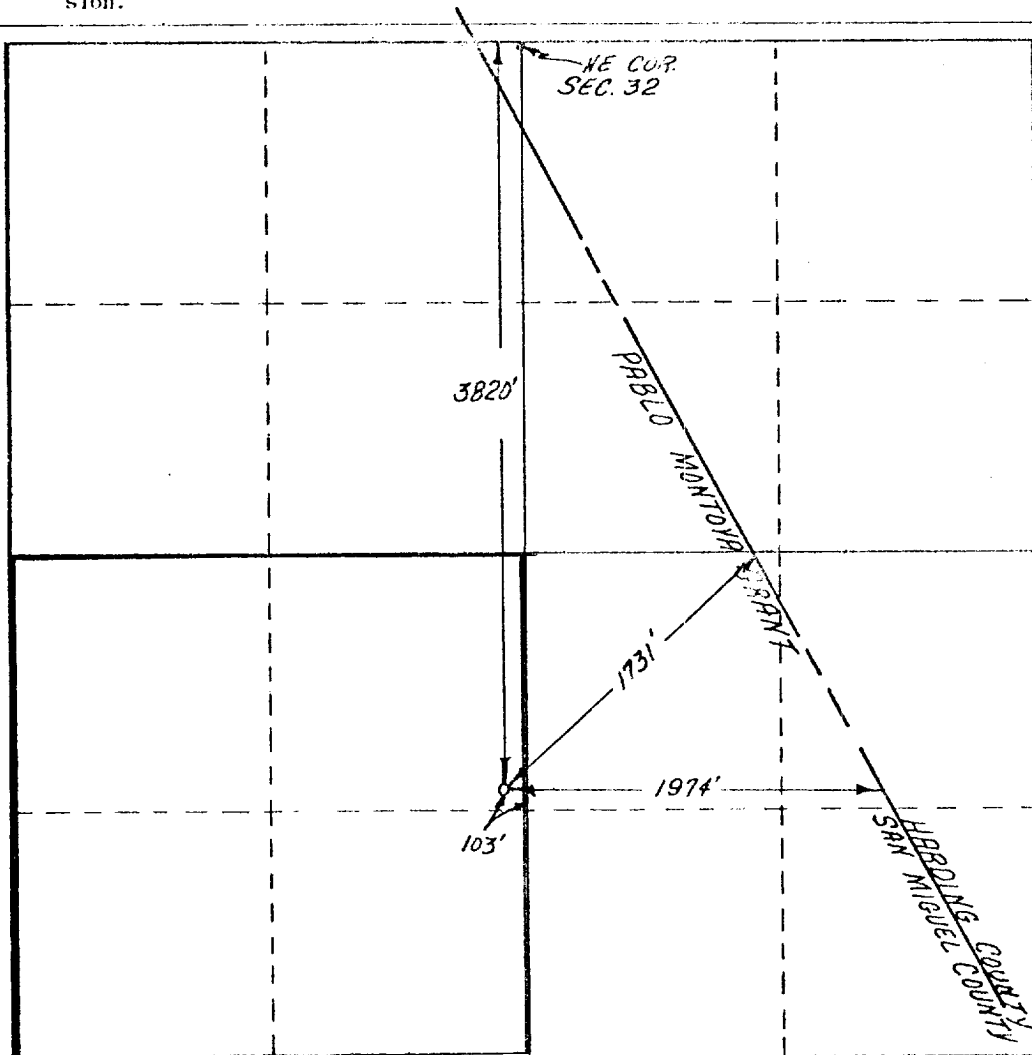
Operator TEXAS PACIFIC OIL COMPANY, INC.		Trigg		Well No. 2
Unit Letter I	Section 32	Township 15N	Range 30E	County San Miguel
Actual Footage Location of Well: 3820' feet from the North line and 103' feet from the East line				
Ground Level Elev. 4704'	Producing Formation Pre-Cambrian	Foot Wildcat	Dedicated Acreage: 160 Acres	

1. Outline the acreage dedicated to the subject well by colored pencil or hachure marks on the plat below.
2. If more than one lease is dedicated to the well, outline each and identify the ownership thereof (both as to working interest and royalty).
3. If more than one lease of different ownership is dedicated to the well, have the interests of all owners been consolidated by communitization, unitization, force-pooling, etc?

Yes No If answer is "yes," type of consolidation _____

If answer is "no," list the owners and tract descriptions which have actually been consolidated. (Use reverse side of this form if necessary.) _____

No allowable will be assigned to the well until all interests have been consolidated (by communitization, unitization, forced-pooling, or otherwise) or until a non-standard unit, eliminating such interests, has been approved by the Commission.



CERTIFICATION

I hereby certify that the information contained herein is true and complete to the best of my knowledge and belief.

R. D. Hawkins

Name
R. D. Hawkins

Position
Sr. Production Clerk

Company
Texas Pacific Oil Co., Inc.

Date
November 7, 1979

I hereby certify that the well location shown on this plat was plotted from field notes of actual surveys made by me or under my supervision, and that the same is true and correct to the best of my knowledge and belief.

GARY D. BOSWELL
NO. 6689
OCTOBER 23 1979
REGISTERED LAND SURVEYOR

Date Surveyed
Gary D. Boswell

Registered Professional Engineer and/or Land Surveyor

Gary D. Boswell
Certificate No.
6689