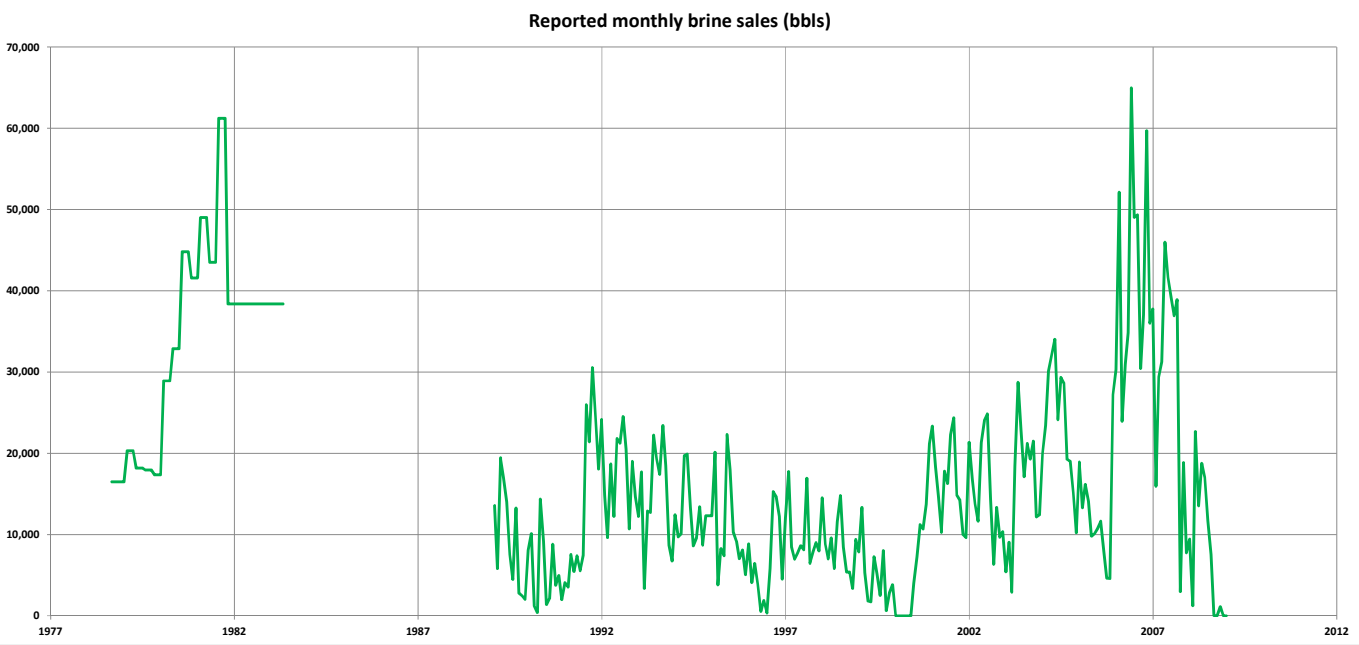
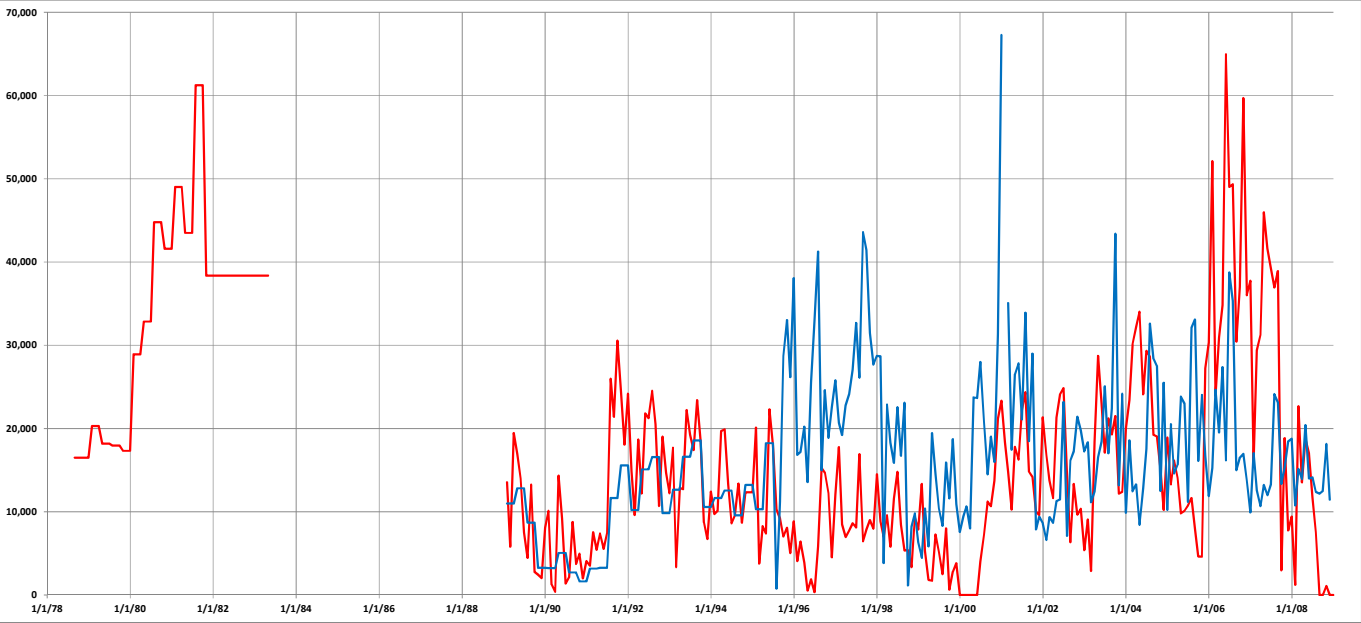


BW - ____006____

BRINE PRODUCTION





Year	Month	Date	Reported monthly brine sales (bbls)	Date	Quarterly brine production (bbls)
1978	January	1/31/1978			
	February	2/28/1978			
	March	3/31/1978			
	April	4/30/1978			
	May	5/31/1978			
	June	6/30/1978			
	July	7/31/1978			
	August	8/31/1978	16,500		
	September	9/30/1978	16,500	9/30/1978	33,000
	October	10/31/1978	16,500		
	November	11/30/1978	16,500		
	December	12/31/1978	16,500	12/31/1978	49,500
1979	January	1/31/1979	20,307		
	February	2/28/1979	20,307		
	March	3/31/1979	20,307	3/31/1979	60,923
	April	4/30/1979	18,195		
	May	5/31/1979	18,195		
	June	6/30/1979	18,195	6/30/1979	54,586
	July	7/31/1979	17,939		
	August	8/31/1979	17,939		
	September	9/30/1979	17,939	9/30/1979	53,816
	October	10/31/1979	17,330		
	November	11/30/1979	17,330		
	December	12/31/1979	17,330	12/31/1979	51,990
1980	January	1/31/1980	28,917		
	February	2/28/1980	28,917		
	March	3/31/1980	28,917	3/31/1980	86,752
	April	4/30/1980	32,858		
	May	5/31/1980	32,858		
	June	6/30/1980	32,858	6/30/1980	98,573
	July	7/31/1980	44,794		
	August	8/31/1980	44,794		
	September	9/30/1980	44,794	9/30/1980	134,282
	October	10/31/1980	41,582		
	November	11/30/1980	41,582		
	December	12/31/1980	41,582	12/31/1980	124,745
1981	January	1/31/1981	49,031		
	February	2/28/1981	49,031		
	March	3/31/1981	49,031	3/31/1981	147,092
	April	4/30/1981	43,502		
	May	5/31/1981	43,502		

	June	6/30/1981	43,502	6/30/1981	130,505
	July	7/31/1981	61,241		
	August	8/31/1981	61,241		
	September	9/30/1981	61,241	9/30/1981	183,722
	October	10/31/1981	38,383		
	November	11/30/1981	38,383		
	December	12/31/1981	38,383	12/31/1981	115,150
1982	January	1/31/1982	38,383		
	February	2/28/1982	38,383		
	March	3/31/1982	38,383	3/31/1982	115,150
	April	4/30/1982	38,383		
	May	5/31/1982	38,383		
	June	6/30/1982	38,383	6/30/1982	115,150
	July	7/31/1982	38,383		
	August	8/31/1982	38,383		
	September	9/30/1982	38,383	9/30/1982	115,150
	October	10/31/1982	38,383		
	November	11/30/1982	38,383		
	December	12/31/1982	38,383	12/31/1982	115,150
1983	January	1/31/1983	38,383		
	February	2/28/1983	38,383		
	March	3/31/1983	38,383	3/31/1983	115,150
	April	4/30/1983	38,383		
	May	5/31/1983			
	June	6/30/1983			
	July	7/31/1983			
	August	8/31/1983			
	September	9/30/1983			
	October	10/31/1983			
	November	11/30/1983			
	December	12/31/1983			
1984	January	1/31/1984			
	February	2/28/1984			
	March	3/31/1984			
	April	4/30/1984			
	May	5/31/1984			
	June	6/30/1984			
	July	7/31/1984			
	August	8/31/1984			
	September	9/30/1984			
	October	10/31/1984			
	November	11/30/1984			
	December	12/31/1984			
1985	January	1/31/1985			
	February	2/28/1985			
	March	3/31/1985			
	April	4/30/1985			

	May	5/31/1985			
	June	6/30/1985			
	July	7/31/1985			
	August	8/31/1985			
	September	9/30/1985			
	October	10/31/1985			
	November	11/30/1985			
	December	12/31/1985			
1986	January	1/31/1986			
	February	2/28/1986			
	March	3/31/1986			
	April	4/30/1986			
	May	5/31/1986			
	June	6/30/1986			
	July	7/31/1986			
	August	8/31/1986			
	September	9/30/1986			
	October	10/31/1986			
	November	11/30/1986			
	December	12/31/1986			
1987	January	1/31/1987			
	February	2/28/1987			
	March	3/31/1987			
	April	4/30/1987			
	May	5/31/1987			
	June	6/30/1987			
	July	7/31/1987			
	August	8/31/1987			
	September	9/30/1987			
	October	10/31/1987			
	November	11/30/1987			
	December	12/31/1987			
1988	January	1/31/1988			
	February	2/28/1988			
	March	3/31/1988			
	April	4/30/1988			
	May	5/31/1988	3,440	5/31/1988	
	June	6/30/1988			
	July	7/31/1988			
	August	8/31/1988			
	September	9/30/1988			
	October	10/31/1988			
	November	11/30/1988			
	December	12/31/1988			
1989	January	1/31/1989	13,555		
	February	2/28/1989	5,805		
	March	3/31/1989	19,465	3/31/1989	38,825

	April	4/30/1989	16,966		
	May	5/31/1989	14,004		
	June	6/30/1989	7,518	6/30/1989	38,488
	July	7/31/1989	4,450		
	August	8/31/1989	13,254		
	September	9/30/1989	2,790	9/30/1989	20,494
	October	10/31/1989	2,440		
	November	11/30/1989	2,020		
	December	12/31/1989	8,075	12/31/1989	12,535
1990	January	1/31/1990	10,117		
	February	2/28/1990	1,250		
	March	3/31/1990	390	3/31/1990	11,757
	April	4/30/1990	14,337		
	May	5/31/1990	9,176		
	June	6/30/1990	1,383	6/30/1990	24,896
	July	7/31/1990	2,109		
	August	8/31/1990	8,780		
	September	9/30/1990	3,730	9/30/1990	14,619
	October	10/31/1990	4,960		
	November	11/30/1990	1,981		
	December	12/31/1990	4,075	12/31/1990	11,016
1991	January	1/31/1991	3,520		
	February	2/28/1991	7,545		
	March	3/31/1991	5,445	3/31/1991	16,510
	April	4/30/1991	7,380		
	May	5/31/1991	5,543		
	June	6/30/1991	7,440	6/30/1991	20,363
	July	7/31/1991	25,980		
	August	8/31/1991	21,394		
	September	9/30/1991	30,555	9/30/1991	77,929
	October	10/31/1991	24,480		
	November	11/30/1991	18,062		
	December	12/31/1991	24,167	12/31/1991	66,709
1992	January	1/31/1992	14,867		
	February	2/28/1992	9,610		
	March	3/31/1992	18,665	3/31/1992	43,142
	April	4/30/1992	12,210		
	May	5/31/1992	21,825		
	June	6/30/1992	21,235	6/30/1992	55,270
	July	7/31/1992	24,535		
	August	8/31/1992	20,515		
	September	9/30/1992	10,700	9/30/1992	55,750
	October	10/31/1992	19,015		
	November	11/30/1992	14,670		
	December	12/31/1992	12,225	12/31/1992	45,910
1993	January	1/31/1993	17,700		
	February	2/28/1993	3,355		

	March	3/31/1993	12,882	3/31/1993	33,937
	April	4/30/1993	12,712		
	May	5/31/1993	22,220		
	June	6/30/1993	19,274	6/30/1993	54,206
	July	7/31/1993	17,395		
	August	8/31/1993	23,410		
	September	9/30/1993	18,465	9/30/1993	59,270
	October	10/31/1993	8,700		
	November	11/30/1993	6,730		
	December	12/31/1993	12,410	12/31/1993	27,840
1994	January	1/31/1994	9,715		
	February	2/28/1994	10,095		
	March	3/31/1994	19,694	3/31/1994	39,504
	April	4/30/1994	19,907		
	May	5/31/1994	13,350		
	June	6/30/1994	8,600	6/30/1994	41,857
	July	7/31/1994	9,600		
	August	8/31/1994	13,400		
	September	9/30/1994	8,680	9/30/1994	31,680
	October	10/31/1994	12,325		
	November	11/30/1994	12,325		
	December	12/31/1994	12,325	12/31/1994	36,974
1995	January	1/31/1995	20,120		
	February	2/28/1995	3,780		
	March	3/31/1995	8,275	3/31/1995	32,175
	April	4/30/1995	7,380		
	May	5/31/1995	22,315		
	June	6/30/1995	17,970	6/30/1995	47,664
	July	7/31/1995	10,290		
	August	8/31/1995	9,190		
	September	9/30/1995	7,020	9/30/1995	26,500
	October	10/31/1995	8,080		
	November	11/30/1995	5,040		
	December	12/31/1995	8,840	12/31/1995	21,960
1996	January	1/31/1996	4,080		
	February	2/28/1996	6,436		
	March	3/31/1996	3,888	3/31/1996	14,404
	April	4/30/1996	532		
	May	5/31/1996	1,875		
	June	6/30/1996	330	6/30/1996	2,737
	July	7/31/1996	5,820		
	August	8/31/1996	15,285		
	September	9/30/1996	14,675	9/30/1996	35,780
	October	10/31/1996	12,235		
	November	11/30/1996	4,513		
	December	12/31/1996	12,025	12/31/1996	28,773
1997	January	1/31/1997	17,760		

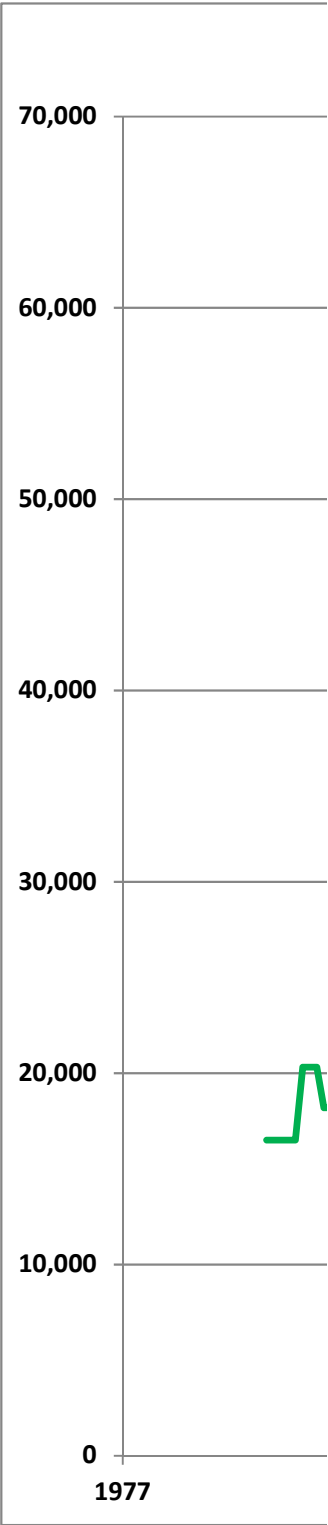
	February	2/28/1997	8,460		
	March	3/31/1997	6,970	3/31/1997	33,190
	April	4/30/1997	7,690		
	May	5/31/1997	8,616		
	June	6/30/1997	8,120	6/30/1997	24,426
	July	7/31/1997	16,930		
	August	8/31/1997	6,445		
	September	9/30/1997	7,855	9/30/1997	31,230
	October	10/31/1997	9,000		
	November	11/30/1997	7,979		
	December	12/31/1997	14,510	12/31/1997	31,489
1998	January	1/31/1998	8,830		
	February	2/28/1998	6,995		
	March	3/31/1998	9,580	3/31/1998	25,405
	April	4/30/1998	5,810		
	May	5/31/1998	11,580		
	June	6/30/1998	14,786	6/30/1998	32,176
	July	7/31/1998	8,451		
	August	8/31/1998	5,360		
	September	9/30/1998	5,371	9/30/1998	19,182
	October	10/31/1998	3,345		
	November	11/30/1998	9,390		
	December	12/31/1998	7,860	12/31/1998	20,595
1999	January	1/31/1999	13,340		
	February	2/28/1999	5,290		
	March	3/31/1999	1,815	3/31/1999	20,445
	April	4/30/1999	1,720		
	May	5/31/1999	7,260		
	June	6/30/1999	5,180	6/30/1999	14,160
	July	7/31/1999	2,505		
	August	8/31/1999	8,005		
	September	9/30/1999	630	9/30/1999	11,140
	October	10/31/1999	2,815		
	November	11/30/1999	3,825		
	December	12/31/1999	0	12/31/1999	6,614
2000	January	1/31/2000	0		
	February	2/28/2000	0		
	March	3/31/2000	0	3/31/2000	0
	April	4/30/2000	0		
	May	5/31/2000	0		
	June	6/30/2000	3,995	6/30/2000	3,995
	July	7/31/2000	7,225		
	August	8/31/2000	11,220		
	September	9/30/2000	10,670	9/30/2000	29,115
	October	10/31/2000	13,728		
	November	11/30/2000	21,190		
	December	12/31/2000	23,345	12/31/2000	58,263

2001	January	1/31/2001	18,337		
	February	2/28/2001	14,755		
	March	3/31/2001	10,260	3/31/2001	43,352
	April	4/30/2001	17,805		
	May	5/31/2001	16,260		
	June	6/30/2001	22,272	6/30/2001	56,337
	July	7/31/2001	24,359		
	August	8/31/2001	14,836		
	September	9/30/2001	14,198	9/30/2001	53,393
	October	10/31/2001	9,995		
	November	11/30/2001	9,605		
	December	12/31/2001	21,355	12/31/2001	40,955
2002	January	1/31/2002	16,810		
	February	2/28/2002	13,753		
	March	3/31/2002	11,635	3/31/2002	42,198
	April	4/30/2002	21,320		
	May	5/31/2002	24,050		
	June	6/30/2002	24,850	6/30/2002	70,220
	July	7/31/2002	14,365		
	August	8/31/2002	6,322		
	September	9/30/2002	13,340	9/30/2002	34,027
	October	10/31/2002	9,660		
	November	11/30/2002	10,360		
	December	12/31/2002	5,390	12/31/2002	25,410
2003	January	1/31/2003	9,060		
	February	2/28/2003	2,890		
	March	3/31/2003	18,405	3/31/2003	30,355
	April	4/30/2003	28,730		
	May	5/31/2003	22,940		
	June	6/30/2003	17,100	6/30/2003	68,770
	July	7/31/2003	21,213		
	August	8/31/2003	19,290		
	September	9/30/2003	21,505	9/30/2003	62,008
	October	10/31/2003	12,170		
	November	11/30/2003	12,410		
	December	12/31/2003	20,015	12/31/2003	44,595
2004	January	1/31/2004	23,415		
	February	2/28/2004	30,115		
	March	3/31/2004	32,213	3/31/2004	85,743
	April	4/30/2004	34,035		
	May	5/31/2004	24,120		
	June	6/30/2004	29,340	6/30/2004	87,495
	July	7/31/2004	28,590		
	August	8/31/2004	19,240		
	September	9/30/2004	19,030	9/30/2004	66,860
	October	10/31/2004	15,125		
	November	11/30/2004	10,229		

	December	12/31/2004	18,925	12/31/2004	44,279
2005	January	1/31/2005	13,287		
	February	2/28/2005	16,162		
	March	3/31/2005	14,080	3/31/2005	43,529
	April	4/30/2005	9,800		
	May	5/31/2005	10,110		
	June	6/30/2005	10,730	6/30/2005	30,640
	July	7/31/2005	11,645		
	August	8/31/2005	7,879		
	September	9/30/2005	4,630	9/30/2005	24,154
	October	10/31/2005	4,592		
	November	11/30/2005	27,221		
	December	12/31/2005	30,320	12/31/2005	62,133
2006	January	1/31/2006	52,122		
	February	2/28/2006	23,940		
	March	3/31/2006	30,934	3/31/2006	106,996
	April	4/30/2006	34,828		
	May	5/31/2006	64,952		
	June	6/30/2006	49,033	6/30/2006	148,813
	July	7/31/2006	49,340		
	August	8/31/2006	30,430		
	September	9/30/2006	37,024	9/30/2006	116,794
	October	10/31/2006	59,699		
	November	11/30/2006	35,998		
	December	12/31/2006	37,755	12/31/2006	133,452
2007	January	1/31/2007	15,952		
	February	2/28/2007	29,397		
	March	3/31/2007	31,249	3/31/2007	76,598
	April	4/30/2007	45,969		
	May	5/31/2007	41,647		
	June	6/30/2007	39,240	6/30/2007	126,856
	July	7/31/2007	36,938		
	August	8/31/2007	38,919		
	September	9/30/2007	2,960	9/30/2007	78,817
	October	10/31/2007	18,838		
	November	11/30/2007	7,756		
	December	12/31/2007	9,423	12/31/2007	36,017
2008	January	1/31/2008	1,230		
	February	2/28/2008	22,674		
	March	3/31/2008	13,530	3/31/2008	37,434
	April	4/30/2008	18,763		
	May	5/31/2008	17,019		
	June	6/30/2008	11,695	6/30/2008	47,477
	July	7/31/2008	7,527		
	August	8/31/2008	0		
	September	9/30/2008	0	9/30/2008	7,527
	October	10/31/2008	1,104		

November	11/30/2008	0		
December	12/31/2008	0	12/31/2008	1,104

Quarterly freshwater injection (bbls)	Freshwater monthly billing from City of Carlsbad (1000s of gallons)	Freshwater monthly billing from City of Carlsbad (bbls)
---	--	--



1,740,763 bbls between Ju
B&E now sole owner and c

3,690

3,690

32,970

10,990
10,990
10,990

	12,823
	12,823
38,468	12,823
	8,696
	8,696
26,087	8,696
	3,272
	3,272
9,817	3,272
	3,220
	3,220
9,661	3,220
	5,064
	5,064
15,193	5,064
	2,712
	2,712
8,136	2,712
	1,633
	1,633
4,898	1,633
	3,167
	3,167
9,500	3,167
	3,262
	3,262
9,786	3,262
	11,653
	11,653
34,960	11,653
	15,583
	15,583
46,750	15,583
	10,209
	10,209
30,628	10,209
	15,083
	15,083
45,250	15,083
	16,577
	16,577
49,732	16,577
	9,830
	9,830
29,490	9,830
	12,667
	12,667

38,000		12,667	
		16,611	
		16,611	
49,862		16,611	
		18,577	
		18,577	
55,732		18,577	
		10,584	
		10,584	
31,751		10,584	
		11,630	
		11,630	
34,891		11,630	
		12,561	
		12,561	
37,682		12,561	
		9,587	
		9,587	
28,762		9,587	
		13,223	
		13,223	
39,670		13,223	
		10,301	
		10,301	
30,903		10,301	
		18,249	
		18,249	
54,746		18,249	
	32	762	changes from B&E to I&W
	471	11,214	
40,690	1,206	28,714	
	1,387	33,024	
	1,099	26,167	
97,262	1,599	38,071	
	707	16,833	
	722	17,190	
54,261	850	20,238	
	569	13,548	
	1,072	25,524	
72,167	1,390	33,095	
	1,733	41,262	
	629	14,976	
80,857	1,034	24,619	
	793	18,881	
	948	22,571	
67,238	1,083	25,786	
	870	20,714	

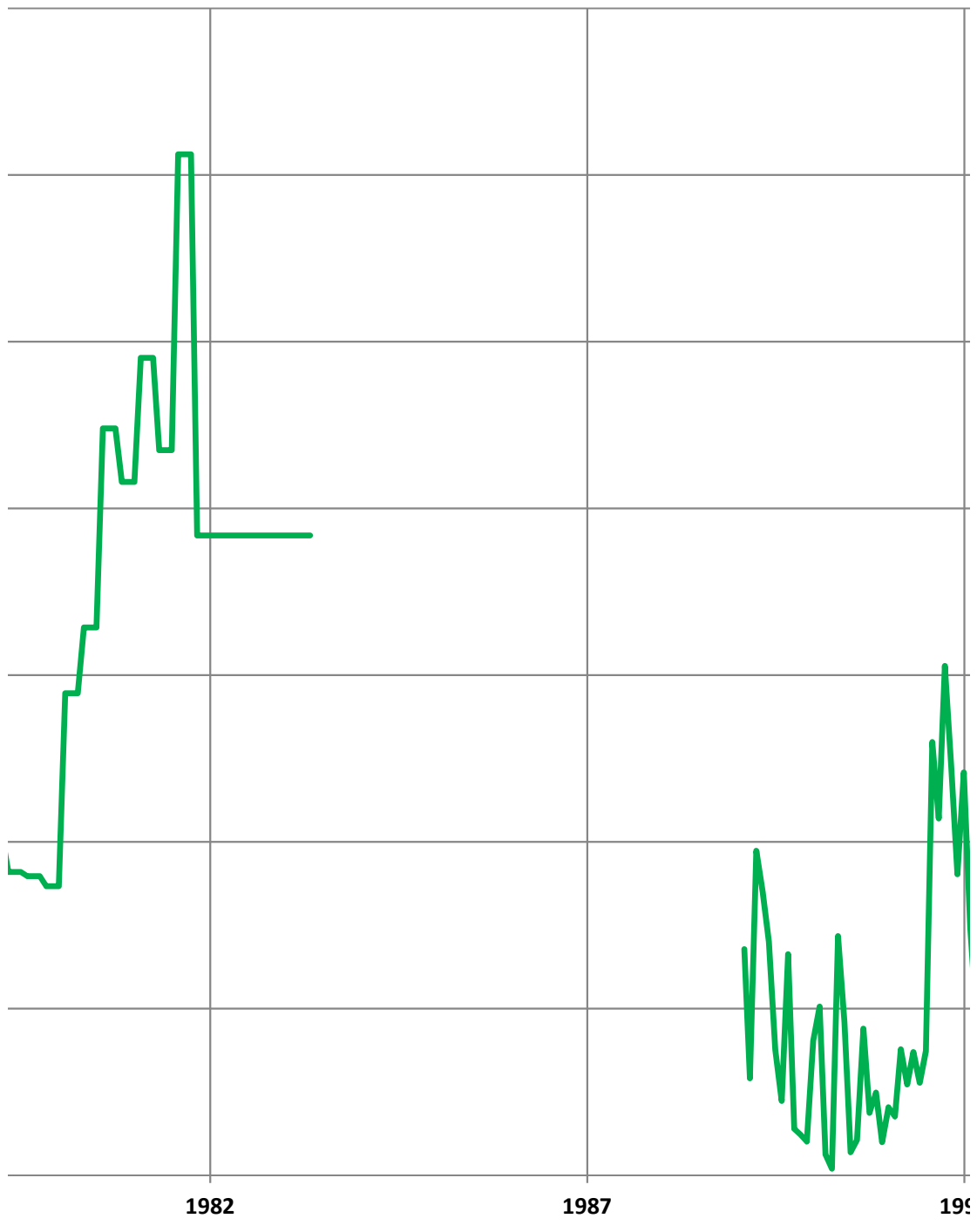
	807	19,214	
62,714	957	22,786	
	1,013	24,119	
	1,136	27,048	
83,857	1,373	32,690	
	1,097	26,119	
	1,831	43,595	
111,166	1,741	41,452	
	1,322	31,476	
	1,163	27,690	
87,904	1,207	28,738	
	1,204	28,667	
	161	3,833	
55,381	961	22,881	
	768	18,286	
	667	15,881	
56,715	947	22,548	
	703	16,738	
	970	23,095	
40,976	48	1,143	
	345	8,214	
	412	9,810	
24,357	266	6,333	
	187	4,452	
	436	10,381	
20,666	245	5,833	
	817	19,452	
	610	14,524	
44,381	437	10,405	
	349	8,310	
	668	15,905	
35,810	487	11,595	
	786	18,714	
	459	10,929	
37,214	318	7,571	Fails cavern integrity test
	396	9,429	
	447	10,643	
28,072	336	8,000	
	997	23,738	
	994	23,667	
75,405	1,176	28,000	
	873	20,786	
	609	14,500	
54,310	799	19,024	
	671	15,976	
	1,316	31,333	
114,571	2,825	67,262	

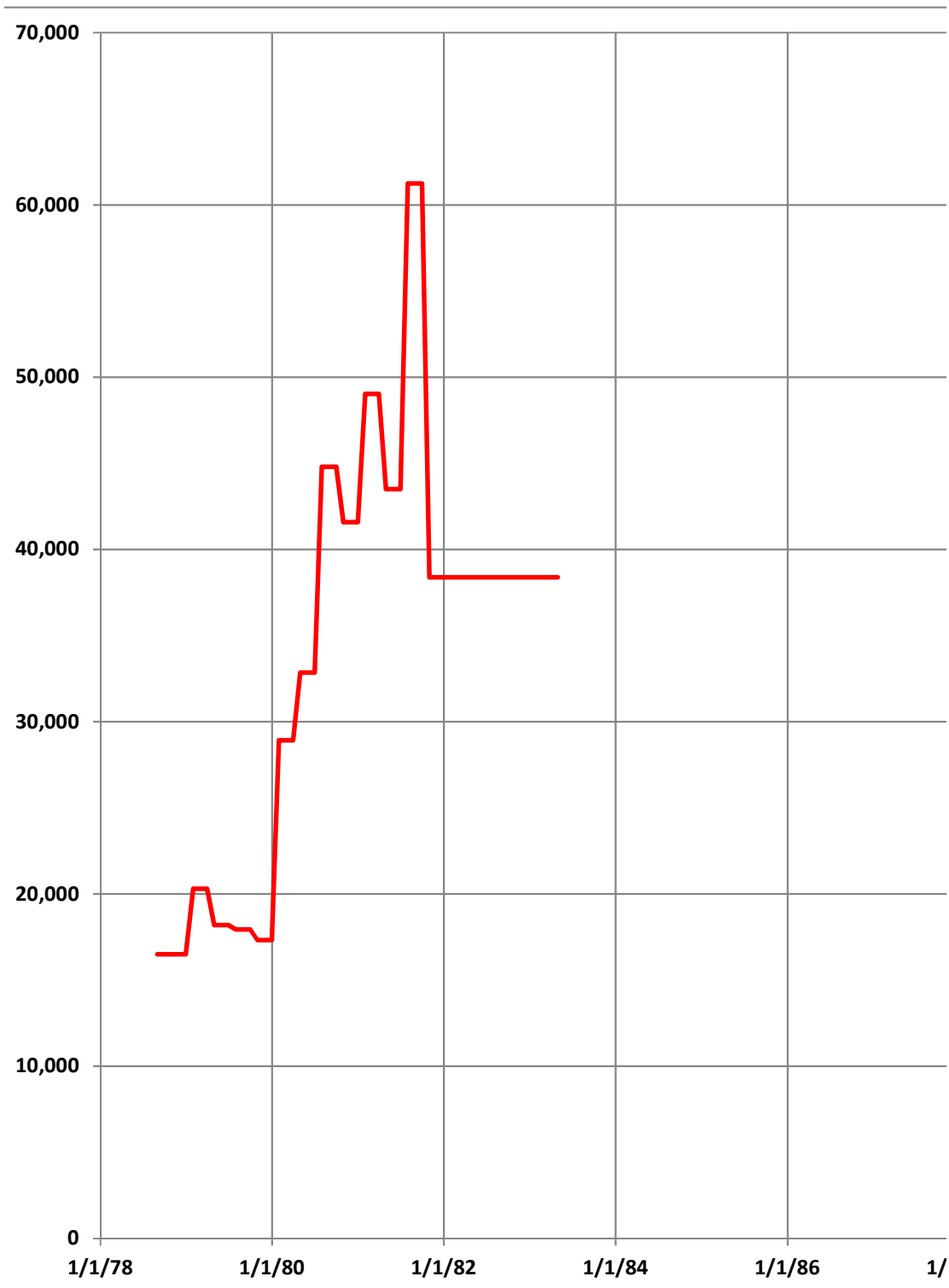
	1,473	35,071
52,523	733	17,452
	1,114	26,524
	1,169	27,833
75,452	886	21,095
	1,425	33,929
	776	18,476
81,405	1,218	29,000
	331	7,881
	395	9,405
25,905	362	8,619
	278	6,619
	393	9,357
24,643	364	8,667
	473	11,262
	482	11,476
45,928	974	23,190
	298	7,095
	679	16,167
40,524	725	17,262
	900	21,429
	831	19,786
58,453	724	17,238
	770	18,333
	468	11,143
41,905	522	12,429
	695	16,548
	774	18,429
60,048	1,053	25,071
	715	17,024
	941	22,405
82,810	1,822	43,381
	553	13,167
	1,015	24,167
47,215	415	9,881
	780	18,571
	523	12,452
44,309	558	13,286
	354	8,429
	539	12,833
38,810	737	17,548
	1,369	32,595
	1,192	28,381
88,500	1,156	27,524
	525	12,500
	1,071	25,500

48,214	429	10,214
	862	20,524
	613	14,595
50,786	658	15,667
	1,001	23,833
	966	23,000
58,023	470	11,190
	1,349	32,119
	1,390	33,095
81,333	677	16,119
	1,010	24,048
	702	16,714
52,643	499	11,881
	642	15,286
	1,036	24,667
59,477	820	19,524
	1,150	27,381
	679	16,167
82,286	1,627	38,738
	1,484	35,333
	630	15,000
66,833	693	16,500
	712	16,952
	582	13,857
40,738	417	9,929
	716	17,048
	528	12,571
40,286	448	10,667
	555	13,214
	503	11,976
38,476	558	13,286
	1,014	24,143
	971	23,119
60,595	560	13,333
	643	15,310
	775	18,452
52,548	789	18,786
	452	10,762
	636	15,143
39,834	585	13,929
	857	20,405
	588	14,000
48,548	594	14,143
	520	12,381
	511	12,167
37,048	525	12,500
	762	18,143

13.58 percentage

Reported





rine sales

additional sales @ 25,000 bbls per month between May 1983 and December 1988

total brine production

rine sales between 1989 thru 2008

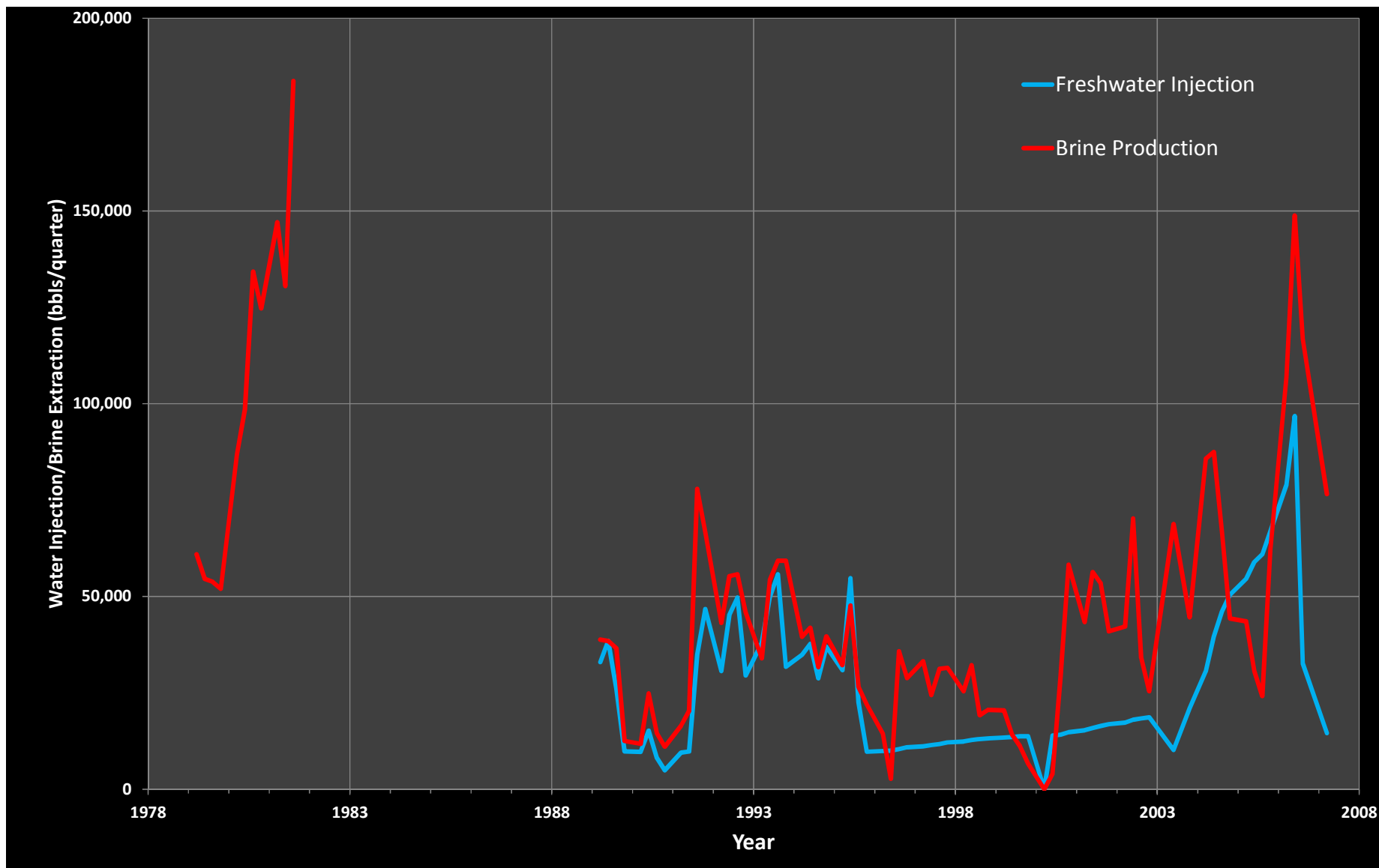
purchased from CoC between 1989 thru 2008

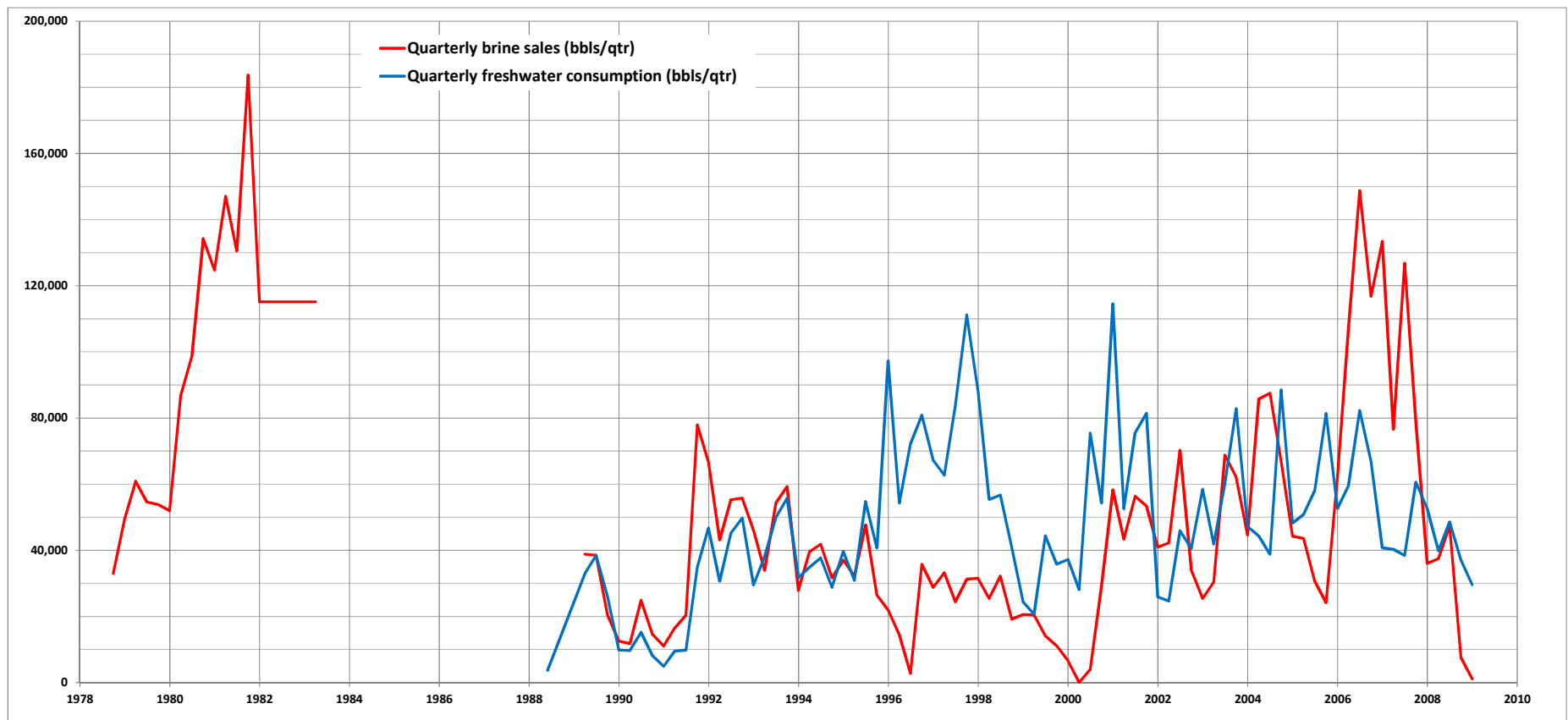
surplus

surplus

year	quarter	date	Freshwater Injec Brine Production		
1979	1	1979.2		60,923	
1979	2	1979.4		54,586	
1979	3	1979.6		53,816	
1979	4	1979.8		51,990	
1980	1	1980.2		86,752	
1980	2	1980.4		98,573	
1980	3	1980.6		134,282	
1980	4	1980.8		124,745	
1981	1	1981.2		147,092	
1981	2	1981.4		130,505	
1981	3	1981.6		183,722	1,126,986
1989	1	1989.2	32,970	38,825	
1989	2	1989.4	38,468	38,465	
1989	3	1989.6	26,087	36,581	
1989	4	1989.8	9,817	12,535	
1990	1	1990.2	9,661	11,757	
1990	2	1990.4	15,193	24,836	
1990	3	1990.6	8,136	14,559	
1990	4	1990.8	4,898	11,016	
1991	1	1991.2	9,500	16,510	2,685,656
1991	2	1991.4	9,786	20,363	1
1991	3	1991.6	34,960	77,929	
1991	4	1991.8	46,750	66,709	
1992	1	1992.2	30,628	43,142	
1992	2	1992.4	45,250	55,270	
1992	3	1992.6	49,732	55,750	
1992	4	1992.8	29,490	45,910	
1993	1	1993.2	38,000	33,937	
1993	2	1993.4	49,862	54,206	
1993	3	1993.6	55,732	59,270	
1993	4	1993.8	31,751	59,270	
1994	1	1994.2	34,891	39,504	
1994	2	1994.4	37,682	41,857	
1994	3	1994.6	28,762	31,680	
1994	4	1994.8	36,974	39,670	
1995	1	1995.2	30,903	32,175	
1995	2	1995.4	54,746	47,664	
1995	3	1995.6	22,476	26,500	
1995	4	1995.8	9,747	21,960	
1996	1	1996.2	9,923	14,404	
1996	2	1996.4	9,991	2,737	
1996	3	1996.6	10,404	35,780	
1996	4	1996.8	10,903	28,773	
1997	1	1997.2	11,135	33,190	
1997	2	1997.4	11,426	24,426	

1997	3	1997.6	11,735	31,230
1997	4	1997.8	12,152	31,489
1998	1	1998.2	12,380	25,405
1998	2	1998.4	12,780	32,176
1998	3	1998.6	12,974	19,182
1998	4	1998.8	13,194	20,595
1999	1	1999.2	13,379	20,445
1999	2	1999.4	13,550	14,160
1999	3	1999.6	13,726	11,140
1999	4	1999.8	13,731	6,614
2000	1	2000.2	0	0
2000	2	2000.4	13,895	3,995
2000	3	2000.6	14,139	29,115
2000	4	2000.8	14,806	58,263
2001	1	2001.2	15,278	43,352
2001	2	2001.4	15,882	56,337
2001	3	2001.6	16,419	53,393
2001	4	2001.8	16,883	40,955
2002	1	2002.2	17,280	42,198
2002	2	2002.4	18,038	70,220
2002	3	2002.6	18,357	34,027
2002	4	2002.8	18,623	25,410
2003	2	2003.4	10,179	68,770
2003	4	2003.8	21,021	44,595
2004	1	2004.2	30,586	85,743
2004	2	2004.4	39,571	87,495
2004	3	2004.6	46,121	66,860
2004	4	2004.8	50,457	44,279
2005	1	2005.2	54,643	43,529
2005	2	2005.4	58,883	30,640
2005	3	2005.6	60,943	24,154
2005	4	2005.8	66,876	62,133
2006	1	2006.2	78,997	106,966
2006	2	2006.4	96,800	148,813
2006	3	2006.6	32,643	116,794
2007	1	2007.2	14,560	76,598
				2,874,230
				1,868,115





Year	Month	Reported monthly brine production (bbls)	Quarterly brine production (bbls)	Reported quarterly freshwater injection (bbls)	Freshwater monthly billing from City of Carlsbad (1000s of gallons)
1978	January				
	February				
	March				
	April				
	May				
	June				
	July				
	August	16,500			
	September	16,500			
	October	16,500			
	November	16,500			
	December	16,500			
1979	January				
	February				
	March		60,923		
	April				
	May				
	June		54,586		
	July				
	August				
	September		53,816		
	October				
	November				
	December		51,990		
1980	January				
	February				
	March		86,752		
	April				
	May				
	June		98,573		
	July				
	August				
	September		134,282		
	October				
	November				
	December		124,745		
1981	January				
	February				
	March		147,092		
	April				
	May				

	June		130,505
	July		
	August		
	September		183,722
	October		
	November		
	December		115,150
1982	January		
	February		
	March		115,150
	April		
	May		
	June		115,150
	July		
	August		
	September		115,150
	October		
	November		
	December		115,150
1983	January		
	February		
	March		115,150
	April	38,383	
	May		
	June		
	July		
	August		
	September		
	October		
	November		
	December		
1984	January		
	February		
	March		
	April		
	May		
	June		
	July		
	August		
	September		
	October		
	November		
	December		
1985	January		
	February		
	March		
	April		

	May			
	June			
	July			
	August			
	September			
	October			
	November			
	December			
1986	January			
	February			
	March			
	April			
	May			
	June			
	July			
	August			
	September			
	October			
	November			
	December			
1987	January			
	February			
	March			
	April			
	May			
	June			
	July			
	August			
	September			
	October			
	November			
	December			
1988	January			
	February			
	March			
	April			
	May	3,440		3,690
	June			
	July			
	August			
	September			
	October			
	November			
	December			
1989	January	13,555		
	February	5,805		
	March	19,465	38,825	32,970

	April	16,966		
	May	14,004		
	June	7,518	38,488	38,468
	July	4,450		
	August	13,254		
	September	2,790	20,494	26,087
	October	2,440		
	November	2,020		
	December	8,075	12,535	9,817
1990	January	10,117		
	February	1,250		
	March	390	11,757	9,661
	April	14,337		
	May	9,176		
	June	1,383	24,896	15,193
	July	2,109		
	August	8,780		
	September	3,730	14,619	8,136
	October	4,960		
	November	1,981		
	December	4,075	11,016	4,898
1991	January	3,520		
	February	7,545		
	March	5,445	16,510	9,500
	April	7,380		
	May	5,543		
	June	7,440	20,363	9,786
	July	25,980		
	August	21,394		
	September	30,555	77,929	34,960
	October	24,480		
	November	18,062		
	December	24,167	66,709	46,750
1992	January	14,867		
	February	9,610		
	March	18,665	43,142	30,628
	April	12,210		
	May	21,825		
	June	21,235	55,270	45,250
	July	24,535		
	August	20,515		
	September	10,700	55,750	49,732
	October	19,015		
	November	14,670		
	December	12,225	45,910	29,490
1993	January	17,700		
	February	3,355		

	March	12,882	33,937	38,000	
	April	12,712			
	May	22,220			
	June	19,274	54,206	49,862	
	July	17,395			
	August	23,410			
	September	18,465	59,270	55,732	
	October	8,700			
	November	6,730			
	December	12,410	27,840	31,751	
1994	January	9,715			
	February	10,095			
	March	19,694	39,504	34,891	
	April	19,907			
	May	13,350			
	June	8,600	41,857	37,682	
	July	9,600			
	August	13,400			
	September	8,680	31,680	28,762	
	October				
	November				
	December		36,974	39,670	
1995	January	20,120			
	February	3,780			
	March	8,275	32,175	30,903	
	April	7,380			
	May	22,315			
	June	17,970	47,664	54,746	
	July	10,290			32
	August	9,190			471
	September	7,020	26,500	22,475	1,206
	October	8,080			1,387
	November	5,040			1,099
	December	8,840	21,960	9,747	1,599
1996	January	4,080			707
	February	6,436			722
	March	3,888	14,404	9,923	850
	April	532			569
	May	1,875			1,072
	June	330	2,737	9,991	1,390
	July	5,820			1,733
	August	15,285			629
	September	14,675	35,780	10,404	1,034
	October	12,235			793
	November	4,513			948
	December	12,025	28,773	10,903	1,083
1997	January	17,760			870

	February	8,460			807
	March	6,970	33,190	11,135	957
	April	7,690			1,013
	May	8,616			1,136
	June	8,120	24,426	11,426	1,373
	July	16,930			1,097
	August	6,445			1,831
	September	7,855	31,230	11,735	1,741
	October	9,000			1,322
	November	7,979			1,163
	December	14,510	31,489	12,152	1,207
1998	January	8,830			1,204
	February	6,995			161
	March	9,580	25,405	12,380	961
	April	5,810			768
	May	11,580			667
	June	14,786	32,176	12,780	947
	July	8,451			703
	August	5,360			970
	September	5,371	19,182	12,974	48
	October	3,345			345
	November	9,390			412
	December	7,860	20,595	13,194	266
1999	January	13,340			187
	February	5,290			436
	March	1,815	20,445	13,379	245
	April	1,720			817
	May	7,260			610
	June	5,180	14,160	13,550	437
	July	2,505			349
	August	8,005			668
	September	630	11,140	13,726	487
	October	2,815			786
	November	3,825			459
	December	0	6,614	13,731	318
2000	January	0			396
	February	0			447
	March	0	0	0	336
	April	0			997
	May	0			994
	June	3,995	3,995	13,895	1,176
	July	7,225			873
	August	11,220			609
	September	10,670	29,115	14,139	799
	October	13,728			671
	November	21,190			1,316
	December	23,345	58,263	14,806	2,825

2001	January	18,337			
	February	14,755			1,473
	March	10,260	43,352	15,278	733
	April	17,805			1,114
	May	16,260			1,169
	June	22,272	56,337	15,882	886
	July	24,359			1,425
	August	14,836			776
	September	14,198	53,393	16,419	1,218
	October	9,995			331
	November	9,605			395
	December	21,355	40,955	16,833	362
2002	January	16,810			278
	February	13,753			393
	March	11,635	42,198	17,280	364
	April	21,320			473
	May	24,050			482
	June	24,850	70,220	18,038	974
	July	14,365			298
	August	6,322			679
	September	13,340	34,027	18,357	725
	October	9,660			900
	November	10,360			831
	December	5,390	25,410	18,623	724
2003	January	9,060			770
	February	2,890			468
	March	18,405	30,355	18,857	522
	April	28,730			695
	May	22,940			774
	June	17,100	68,770	10,179	1,053
	July	21,213			715
	August	19,290			941
	September	21,505	62,008	16,462	1,822
	October	12,170			553
	November	12,410			1,015
	December	20,015	44,595	21,021	415
2004	January	23,415			780
	February	30,115			523
	March	32,213	85,743	30,586	558
	April	34,035			354
	May	24,120			539
	June	29,340	87,495	39,571	737
	July	28,590			1,369
	August	19,240			1,192
	September	19,030	66,860	46,121	1,156
	October	15,125			525
	November	10,229			1,071

	December	18,925	44,279	50,457	429
2005	January	13,287			862
	February	16,162			613
	March	14,080	43,529	54,643	658
	April	9,800			1,001
	May	10,110			966
	June	10,730	30,640	58,883	470
	July	11,645			1,349
	August	7,879			1,390
	September	4,630	24,154	60,943	677
	October	4,592			1,010
	November	27,221			702
	December	30,320	62,133	66,876	499
2006	January	52,122			642
	February	23,940			1,036
	March	30,934	106,996	78,997	820
	April	34,828			1,150
	May	64,952			679
	June	49,033	148,813	96,800	1,627
	July	49,340			1,484
	August	30,430			630
	September	37,024	116,794	32,643	693
	October	59,699			712
	November	35,998			582
	December	37,755	133,452	46,690	417
2007	January	15,952			716
	February	29,397			528
	March	31,249	76,598	14,560	448
	April	45,969			555
	May	41,647			503
	June	39,240	126,856	15,252	558
	July	36,938			1,014
	August	38,919			971
	September	2,960	78,817	15,742	560
	October	18,838			643
	November	7,756			775
	December	9,423	36,017	13,800	789
2008	January	1,230			452
	February	22,674			636
	March	13,530	37,434	14,105	585
	April	18,763			857
	May	17,019			588
	June	11,695	47,477	14,915	594
	July	7,527			520
	August	0			511
	September	0	7,527		525
	October	1,104			762

November	0		481
December	0	1,104	

**Freshwater
monthly billing
from City of
Carlsbad (bbls)**

762
11,214
28,714
33,024
26,167
38,071
16,833
17,190
20,238
13,548
25,524
33,095
41,262
14,976
24,619
18,881
22,571
25,786
20,714

19,214
22,786
24,119
27,048
32,690
26,119
43,595
41,452
31,476
27,690
28,738
28,667
3,833
22,881
18,286
15,881
22,548
16,738
23,095
1,143
8,214
9,810
6,333
4,452
10,381
5,833
19,452
14,524
10,405
8,310
15,905
11,595
18,714
10,929
7,571
9,429
10,643
8,000
23,738
23,667
28,000
20,786
14,500
19,024
15,976
31,333
67,262

35,071
17,452
26,524
27,833
21,095
33,929
18,476
29,000
7,881
9,405
8,619
6,619
9,357
8,667
11,262
11,476
23,190
7,095
16,167
17,262
21,429
19,786
17,238
18,333
11,143
12,429
16,548
18,429
25,071
17,024
22,405
43,381
13,167
24,167
9,881
18,571
12,452
13,286
8,429
12,833
17,548
32,595
28,381
27,524
12,500
25,500

10,214
20,524
14,595
15,667
23,833
23,000
11,190
32,119
33,095
16,119
24,048
16,714
11,881
15,286
24,667
19,524
27,381
16,167
38,738
35,333
15,000
16,500
16,952
13,857
9,929
17,048
12,571
10,667
13,214
11,976
13,286
24,143
23,119
13,333
15,310
18,452
18,786
10,762
15,143
13,929
20,405
14,000
14,143
12,381
12,167
12,500
18,143

11,452