

From: [Marvin](#)
To: [Chase, Carl J. EMNRD](#)
Cc: [Laura Angel](#)
Subject: [EXTERNAL] UBB MIT
Date: Friday, March 18, 2022 9:09:29 AM
Attachments: [image001.png](#)

CAUTION: This email originated outside of our organization. Exercise caution prior to clicking on links or opening attachments.

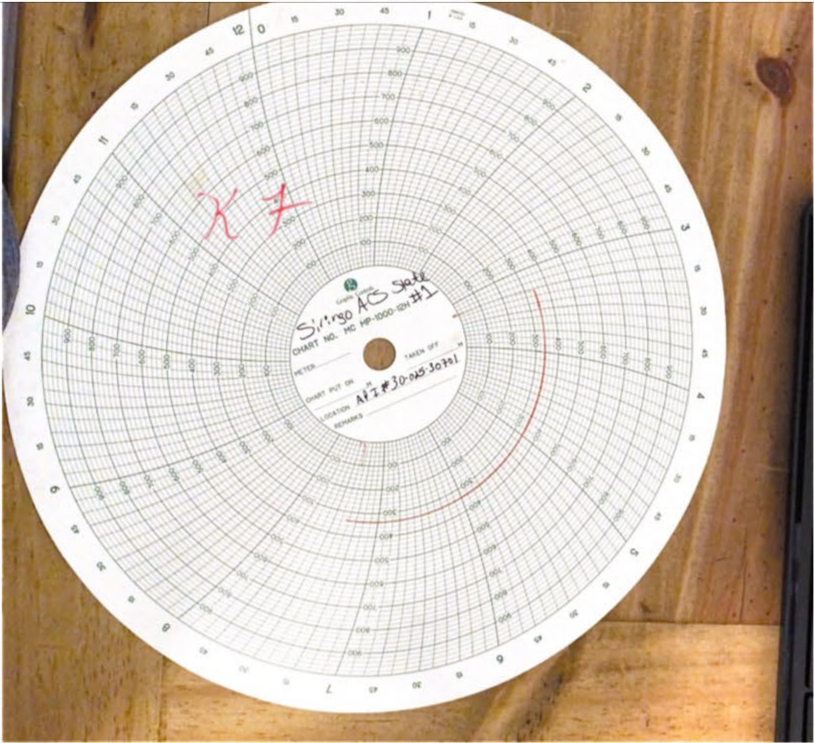
Carl, I'm attaching an image of the MIT chart than was ran on BW35 just 12 months ago. It was a 100% good test, and was witnessed by Kerry Fortner out of Hobbs OCD. Do we need to run this MIT again? Just wanted to make sure you were aware of it.
Thanks,
M

AT&T

10:04 AM

62%

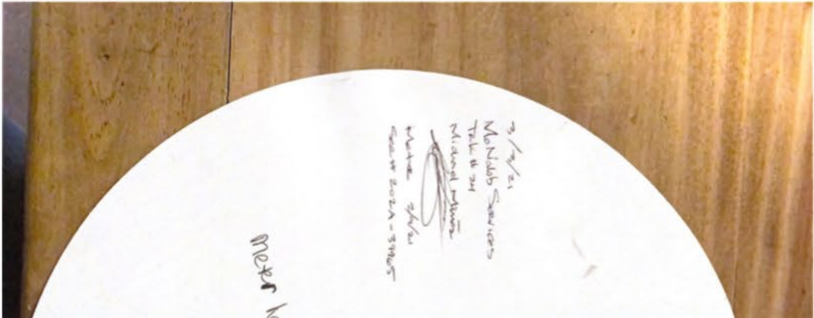
[oedImage.emnrd.nm.gov](#)

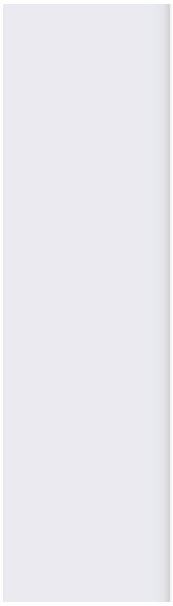
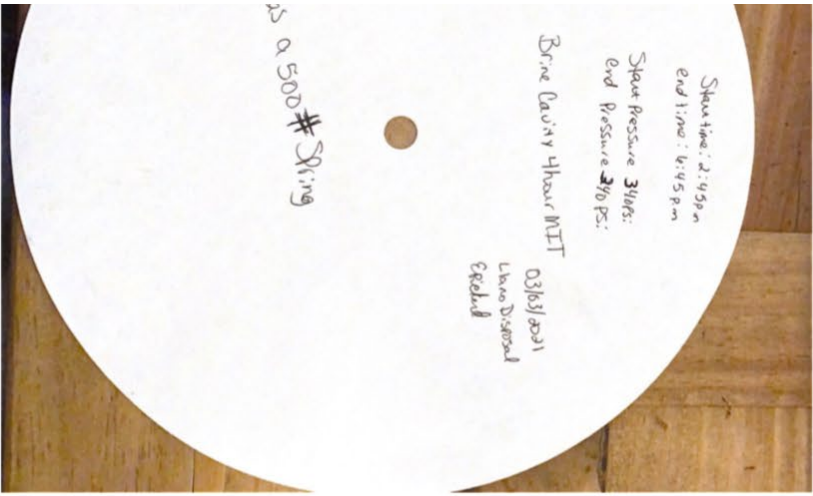


Released to Imaging: 7/16/2021 2:25:58 PM

Received by OCD: 3/8/2021 11:49:07 AM

Page 4 of 6





Sent from my iPhone