

GW - 176

GENERAL CORRESPONDENCE

YEAR(S):

2007-1994

THE SANTA FE
NEW MEXICAN RECEIVED
Founded 1849

APR 30 2007

Oil Conservation Division
1220 S. St. Francis Drive
Santa Fe, NM 87505

NM EMNRD OIL CONSERV

ATTN: Carl Chavez
1220 S ST FRANCIS DR
SANTA FE NM 87505

ALTERNATE ACCOUNT: 56689

AD NUMBER: 00211726 ACCOUNT: 00002212

LEGAL NO: 80841 P.O. #: 52100-3956

859 LINES 1 TIME(S) 481.04

AFFIDAVIT: 6.00

TAX: 37.14

TOTAL: 524.18

AFFIDAVIT OF PUBLICATION

STATE OF NEW MEXICO
COUNTY OF SANTA FE

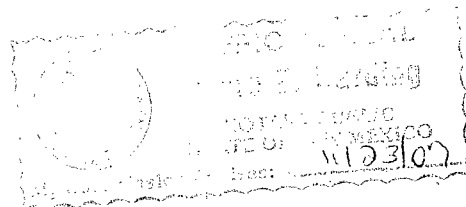
I, R. Lara, being first duly sworn declare and say that I am Legal Advertising Representative of THE SANTA FE NEW MEXICAN, a daily newspaper published in the English language, and having a general circulation in the Counties of Santa Fe and Los Alamos, State of New Mexico and being a newspaper duly qualified to publish legal notices and advertisements under the provisions of Chapter 167 on Session Laws of 1937; that the publication # 80841 a copy of which is hereto attached was published in said newspaper 1 day(s) between 04/26/2007 and 04/26/2007 and that the notice was published in the newspaper proper and not in any supplement; the first date of publication being on the 26th day of April, 2007 and that the undersigned has personal knowledge of the matter and things set forth in this affidavit.

/S/ *R. Lara*
LEGAL ADVERTISEMENT REPRESENTATIVE

Subscribed and sworn to before me on this 26th day of April, 2007

Notary *Laura A. Hardy*

Commission Expires: 11/23/07



**NOTICE OF
PUBLICATION**

**STATE OF
NEW MEXICO
ENERGY, MINERALS
AND NATURAL
RESOURCES
DEPARTMENT
OIL CONSERVATION
DIVISION**

Notice is hereby given that pursuant to New Mexico Water Quality Control Commission Regulations (20.6.2.3106 NMAC), the following discharge permit application(s) has been submitted to the Director of the New Mexico Oil Conservation Division ("NMOCD"), 1220 S. Saint Francis Drive, Santa Fe, New Mexico 87505, Telephone (505) 476-3440:

(GW-162) DCP Midstream LP. Elisabeth Klein, Principal Environmental Specialist, 370 17th Street, Suite 2500 Denver, Colorado 80202, has submitted a renewal application for the previously approved discharge plan for their Antelope Ridge Gas Plant located in the SW/4, SE/4 of Section 15, Township 23 South, Range 34 East, NMPM, Lea County, New Mexico. The plant is located approximately 21.6 miles west on CR-21 from SR-207 to a "lease road" and then south about 2 miles. Natural gas products, waste oil and water are stored in above ground tanks prior to being transported off-site to OCD approved facilities. Groundwater most likely to be affected by a spill, leak or accidental discharge is at a depth of approximately 400 feet below the ground surface, with a total dissolved solids concentration of 55 mg/L. The discharge plan addresses how oilfield products and wastes will be properly handled, stored, and disposed of, including how spills, leaks, and other accidental discharges to the surface will be managed in order to protect fresh water.

(GW-167) DCP Midstream LP. Elisabeth Klein, Principal Environmental Specialist, 370 17th Street, Suite 2500 Denver, Colorado 80202, has submitted a renewal application for the previously approved discharge plan for their P & P Malaga Compressor Station located in the SW/4, NE/4 of Section 3, Township 24 South, Range 28 East, NMPM, Eddy County, New Mexico. The compressor station is located approximately 500 yards northeast on CR-738 from Onsurez Road to an access road. Approximately 12 barrels per day of wastewater will be stored in above ground tanks prior to being transported off-site to OCD approved facilities. Groundwater most likely to be affected by a spill, leak or accidental discharge is at a depth of approximately 30 feet below the ground surface, with a total dissolved solids concentration of 300 mg/L. The discharge plan addresses how oilfield products and wastes will be properly handled, stored, and disposed of, including how spills, leaks, and other accidental discharges to the surface will be managed in order to protect fresh water.

(GW-176) DCP Midstream LP. Elisabeth Klein, Principal Environmental Specialist, 370 17th Street, Suite 2500 Denver, Colorado 80202, has submitted a renewal application for the previously approved discharge plan for their Bootleg Compressor Station located in the NW/4, SE/4 of Section 28, Township 22 South, Range 33 East, NMPM, Lea County, New Mexico. The compressor station is located approximately 6.4 miles southeast on SR-176 from US-180 to an access road and 9.4 miles due south. Approximately 39 barrels per day of wastewater will be stored in above ground tanks prior to being transported off-site to OCD approved facilities. Groundwater most likely to be affected by a spill, leak or accidental discharge is at a depth of approximately 244 feet below the ground surface, with a total dissolved solids concentration of 1,973 mg/L. The discharge plan addresses how

oilfield products and wastes will be properly handled, stored, and disposed of, including how spills, leaks, and other accidental discharges to the surface will be managed in order to protect fresh water.

(GW-177) DCP Midstream LP. Elisabeth Klein, Principal Environmental Specialist, 370 17th Street, Suite 2500 Denver, Colorado 80202, has submitted a renewal application for the previously approved discharge plan for their Maljamar Compressor Station located in the NE/4, SE/4 of Section 20, Township 17 South, Range 33 East, NMPM, Lea County, New Mexico. The compressor station is located approximately 1.3 miles northwest on CR-125 from Dog Lake Road to an access road and 1.3 miles northeast. The facility is in the process of being closed and any wastewater will be stored in above ground tanks prior to being transported off-site to OCD approved facilities. Groundwater most likely to be affected by a spill, leak or accidental discharge is at a depth of approximately 25 to 175 feet below the ground surface, with a total dissolved solids concentration of 1,100 mg/L. The discharge plan addresses how oilfield products and wastes will be properly handled, stored, and disposed of, including how spills, leaks, and other accidental discharges to the surface will be managed in order to protect fresh water.

(GW-178) DCP Midstream LP. Elisabeth Klein, Principal Environmental Specialist, 370 17th Street, Suite 2500 Denver, Colorado 80202, has submitted a renewal application for the previously approved discharge plan for their Wonton Compressor Station located in the NE/4, SE/4 of Section 10, Township 17 South, Range 37 East, NMPM, Lea County, New Mexico. The compressor station is located approximately 1.25 miles east of SR-18. Any wastewater will be stored in above ground tanks prior to being transported off-site to OCD approved facilities. Groundwater most

likely to be affected by a spill, leak or accidental discharge is at a depth of approximately 100 to 200 feet below the ground surface, with a total dissolved solids concentration of 1,100 mg/L. The discharge plan addresses how oilfield products and wastes will be properly handled, stored, and disposed of, including how spills, leaks, and other accidental discharges to the surface will be managed in order to protect fresh water.

(GW-280) DCP Midstream LP. Elisabeth Klein, Principal Environmental Specialist, 370 17th Street, Suite 2500 Denver, Colorado 80202, has submitted a renewal application for the previously approved discharge plan for their Northeast Carlsbad Compressor Station located in the SE/4, NE/4 of Section 6, Township 21 South, Range 28 East, NMPM, Eddy County, New Mexico. The compressor station is located approximately 2.5 miles north-northwest on CR-243 from US-180. Natural gas products, waste oil and water are stored in above ground tanks prior to being transported off-site to OCD approved facilities. Groundwater most likely to be affected by a spill, leak or accidental discharge is at a depth of approximately 13 to 30 feet below the ground surface, with a total dissolved solids concentration of 3,110 mg/L. The discharge plan addresses how oilfield products and wastes will be properly handled, stored, and disposed of, including how spills, leaks, and other accidental discharges to the surface will be managed in order to protect fresh water.

(GW-311) DCP Midstream LP. Elisabeth Klein, Principal Environmental Specialist, 370 17th Street, Suite 2500 Denver, Colorado 80202, has submitted a renewal application for the previously approved discharge plan for their Cotton Draw Compressor Station located in the NE/4, NW/4 of Section 18, Township 25 South, Range 32 East, NMPM, Lea County, New Mexico. The compressor station is located approximately 6.3 miles

south on CR-1 from SR-128. Approximately 30 barrels per day of wastewater is stored in above ground tanks prior to being transported off-site to OCD approved facilities. Groundwater most likely to be affected by a spill, leak or accidental discharge is at a depth of approximately 400 feet below the ground surface, with a total dissolved solids concentration from 1,000 to 1,700 mg/L. The discharge plan addresses how oilfield products and wastes will be properly handled, stored, and disposed of, including how spills, leaks, and other accidental discharges to the surface will be managed in order to protect fresh water.

(GW-316) DCP Midstream LP. Elisabeth Klein, Principal Environmental Specialist, 370 17th Street, Suite 2500 Denver, Colorado 80202, has submitted a renewal application for the previously approved discharge plan for their Paige Hat Mesa Compressor Station located in the SW/4, NE/4 of Section 11, Township 21 South, Range 32 East, NMPM, Lea County, New Mexico. The compressor station is located approximately 1.75 miles south of the SR-176 and US-180 intersection. Approximately 6 barrels per day of wastewater is stored in above ground tanks prior to being transported off-site to OCD approved facilities. Groundwater most likely to be affected by a spill, leak or accidental discharge is at a depth of approximately 175 feet below the ground surface, with a total dissolved solids concentration of 1,000 mg/L. The discharge plan addresses how oilfield products and wastes will be properly handled, stored, and disposed of, including how spills, leaks, and other accidental discharges to the surface will be managed in order to protect fresh water.

The NMOCD has determined that the application is administratively complete and has prepared a draft permit. The NMOCD will accept comments and statements of interest regarding this application and will create a facility-specific mailing list for persons who wish to receive future notices. Persons interested in obtaining further information, submitting comments or requesting to be on a facility-specific mailing list for future notices may contact the Environmental Bureau Chief of the Oil Conservation Division at the address given above. The administrative completeness determination and draft permit may be viewed at the above address between 8:00 a.m. and 4:00 p.m., Monday through Friday, or may also be viewed at the NMOCD web site <http://www.emnrd.state.nm.us/ocd/>. Persons interested in obtaining a copy of the application and draft permit may contact the NMOCD at the address given above. Prior to ruling on any proposed discharge permit or major modification, the Director shall allow a period of at least thirty (30) days after the date of publication of this notice, during which interested persons may submit comments or request that NMOCD hold a public hearing. Requests for a public hearing shall set forth the reasons why a hearing should be held. A hearing will be held if the Director determines that there is significant public interest.

If no public hearing is held, the Director will approve or disapprove the proposed permit based on information available, including all comments received. If a public hearing is held, the director will approve or disapprove the proposed permit based on information

in the permit application and information submitted at the hearing.

Para obtener más información sobre esta solicitud en español, sirvase comunicarse por favor: New Mexico Energy, Minerals and Natural Resources Department (Depto. Del Energia, Minerals y Recursos Naturales de Nuevo México), Oil Conservation Division (Depto. Conservación Del Petróleo), 1220 South St. Francis Drive, Santa Fe, New Mexico (Contacto: Dorothy Phillips, 505-476-3461)

GIVEN under the Seal of New Mexico Oil Conservation Commission at Santa Fe, New Mexico, on this 20th day of April 2007.

STATE OF
NEW MEXICO
OIL CONSERVATION
DIVISION

SEAL Mark Fesmire,
Director
Legal #80841
Pub. Apr. 26, 2007



NEW MEXICO ENERGY, MINERALS and NATURAL RESOURCES DEPARTMENT

BILL RICHARDSON

Governor

Joanna Prukop

Cabinet Secretary

Mark E. Fesmire, P.E.

Director

Oil Conservation Division

April 20, 2007

Ms. Elisabeth Klein
DCP Midstream, LP
370 17th Street, Suite 2500
Denver, Colorado 80202

**Re: Discharge Plan Renewal Permit (GW-176)
DCP Midstream, LP
Bootleg Compressor Station
Lea County, New Mexico**

Dear Ms. Klein:

The New Mexico Oil Conservation Division (NMOCD) has received DCP Midstream LP's request and initial fee, dated February 28, 2007, to renew GW-176 for the Bootleg Compressor Station located in the NW/4 SE/4 of Section 28, Township 22 South, Range 33 East, NMPM, Lea County, New Mexico. The initial submittal provided the required information in order to deem the application "administratively" complete.

Therefore, the New Mexico Water Quality Control Commission regulations (WQCC) notice requirements of 20.6.2.3108 NMAC must be satisfied and demonstrated to the NMOCD. NMOCD will provide public notice pursuant to the WQCC notice requirements of 20.6.2.3108 NMAC to determine if there is any public interest.

If there are any questions regarding this matter, please do not hesitate to contact me at (505) 476-3491 or carlj.chavez@state.nm.us. On behalf of the staff of the NMOCD, I wish to thank you and your staff for your cooperation during this discharge permit review.

Sincerely,

Carl J. Chavez

Environmental Engineer

CJC/cjc

cc: OCD District I Office, Hobbs

Chavez, Carl J, EMNRD

To: Chavez, Carl J, EMNRD
Cc: Price, Wayne, EMNRD
Subject: Duke Energy Field Services- Note to File

On January 5, 2007, Wayne Price and Carl Chavez of the Oil Conservation Division (OCD) contacted Ruth Lang of Duke Energy Field Services at (303) 605-1713 and left a phone message regarding the large number of expired facilities (see attachment) where the discharge plan was not renewed within 120 or in advance of their expiration. Wayne Price referred to Ms. Lang's December 2, 2006 e-mail message regarding "Duke Energy Field Services Expired Discharge Plan Facilities."

Mr. Price informed Ms. Lang that all discharge plan renewal applications need to be submitted to the OCD for review by March 1, 2007. In addition, she was informed that the OCD will be issuing an Notice of Violation for neglecting to renew its discharge plan permits with the OCD.

Carl J. Chavez, CHMM
New Mexico Energy, Minerals & Natural Resources Dept.
Oil Conservation Division, Environmental Bureau
1220 South St. Francis Dr., Santa Fe, New Mexico 87505
Office: (505) 476-3491
Fax: (505) 476-3462
E-mail: CarlJChavez@state.nm.us
Website: <http://www.emnrd.state.nm.us/oed/>
(Pollution Prevention Guidance is under "Publications")

1/5/2007

Permit ID	Facility	Company	Status	Expired	Contact	phone	e-mail	Comments
150	Pure Gold "28" CS	Duke	A	11/22/03	Lisabeth Klein	303-605-1778	eaklein@duke-energy.com	Request 120 day extension to 4/1/07
162	Antelope Ridge Gas Plant	Duke	A	3/23/04	Lisabeth Klein	303-605-1778	eaklein@duke-energy.com	Request 120 day extension to 4/1/07
167	Malaga CS	Duke	A	7/25/04	Lisabeth Klein	303-605-1778	eaklein@duke-energy.com	Request 120 day extension to 4/1/07
311	Cotton Draw CS	Duke	A	1/6/05	Lisabeth Klein	303-605-1778	eaklein@duke-energy.com	Request 120 day extension to 4/1/07
316	Hat Mesa CS	Duke	A	1/6/05	Lisabeth Klein	303-605-1778	eaklein@duke-energy.com	Request 120 day extension to 4/1/07
176	Boot Leg CS	Duke	A	1/20/05	Lisabeth Klein	303-605-1778	eaklein@duke-energy.com	Request 120 day extension to 4/1/07
227	Lee CS	Duke	I	12/28/05	Lisabeth Klein	303-605-1778	eaklein@duke-energy.com	Submitted correspondence to Ben Stone during meeting in Sept. 2006
168	Feagen Booster Station	Duke	I	12/27/04	Lisabeth Klein	303-605-1778	eaklein@duke-energy.com	Closed 2/1/05
177	Maljamar CS	Duke	A	3/21/05	Lisabeth Klein	303-605-1778	eaklein@duke-energy.com	Request 120 day extension to 4/1/07
178	Wonton CS	Duke	A	3/21/05	Lisabeth Klein	303-605-1778	eaklein@duke-energy.com	Request 120 day extension to 4/1/07
24	Avalon Gas Plant	Duke	A	9/18/05	Lisabeth Klein	303-605-1778	eaklein@duke-energy.com	Request 120 day extension to 4/1/07
163	Apex CS	Duke	A	4/29/04	Lisabeth Klein	303-605-1778	eaklein@duke-energy.com	Request 120 day extension to 4/1/07
175	Hobbs Gas Process Plant	Duke	A	1/9/05	Lisabeth Klein	303-605-1778	eaklein@duke-energy.com	Request 120 day extension to 4/1/07
16	Eunice Gas Plant	Duke	A	4/25/09	Lisabeth Klein	303-605-1778	eaklein@duke-energy.com	Request 120 day extension to 4/1/07
139	CP-1 CS	Duke	A	3/23/04	Lisabeth Klein	303-605-1778	eaklein@duke-energy.com	Closed 10/15/03
42	Indian Hills Gas Plant	Duke	I	4/6/2002	Lisabeth Klein	303-605-1778	eaklein@duke-energy.com	Dismantled



Mark Bishop
Environmental Specialist
SH&E Services
Natural Gas & Gas Product

Conoco Inc.
921 W. Sanger
Hobbs, NM 88240
Phone 505-391-1956
Cell (281) 380-0018
E-mail mark.a.bishop@conoco.com

August 16, 2002

Return Receipt Requested
Certified Mail No.
7099 3220 0001 4997 3032

State of New Mexico
Energy Minerals and Natural Resources
Oil Conservation Division
1220 South St. Francis Dr.
Santa Fe, NM 87505

RECEIVED
AUG 26 2002
Environmental Bureau
Oil Conservation Division


RE: GW-176 Discharge Plan
Bootleg Compressor Station
Testing of, Underground process/ Wastewater Lines and Below Grade Tanks
and Sumps

Dear Mr. Price:

In accordance with our OCD discharge plan the following actions were performed. Mr. Larry Johnson of the Oil conservation Division in Hobbs was notified on July 12, 2002 of scheduled integrity tests to be performed at our Bootleg Compressor Station. On July 18 the required integrity tests were performed with no underground leaks or lack of integrity observed. A copy of the test notes and circle charts are included for your inspection.

If you have any questions or require more information please contact me at, 505-391-1956.

Sincerely,


Mark Bishop

CC: Joyce Miley
Jeff Driver
File: 2859 B1

Enclosed: Circle charts
Testing Procedure & results

Bootleg Compressor Station GW-176
Raptor Natural Gathering & Processing LLC.
Operated by Conoco Gas & Power
OCD Open Drain Test Record

July 12; notified local Hobbs OCD office of intent to perform required testing

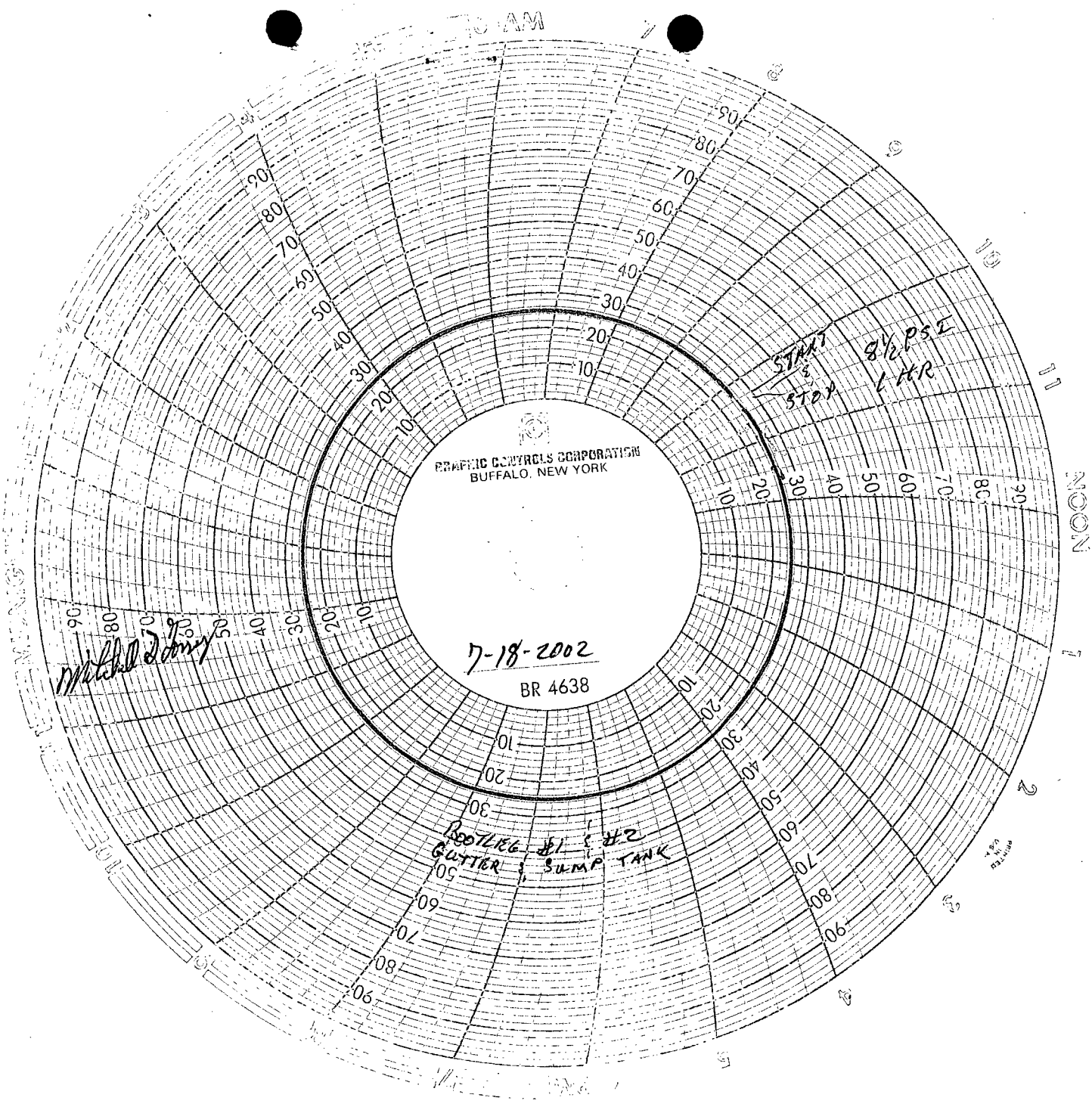
July 18; OCD representative did not arrive, continued with test; isolated drain lines and installed pressure chart recorders on the following open drain lines;

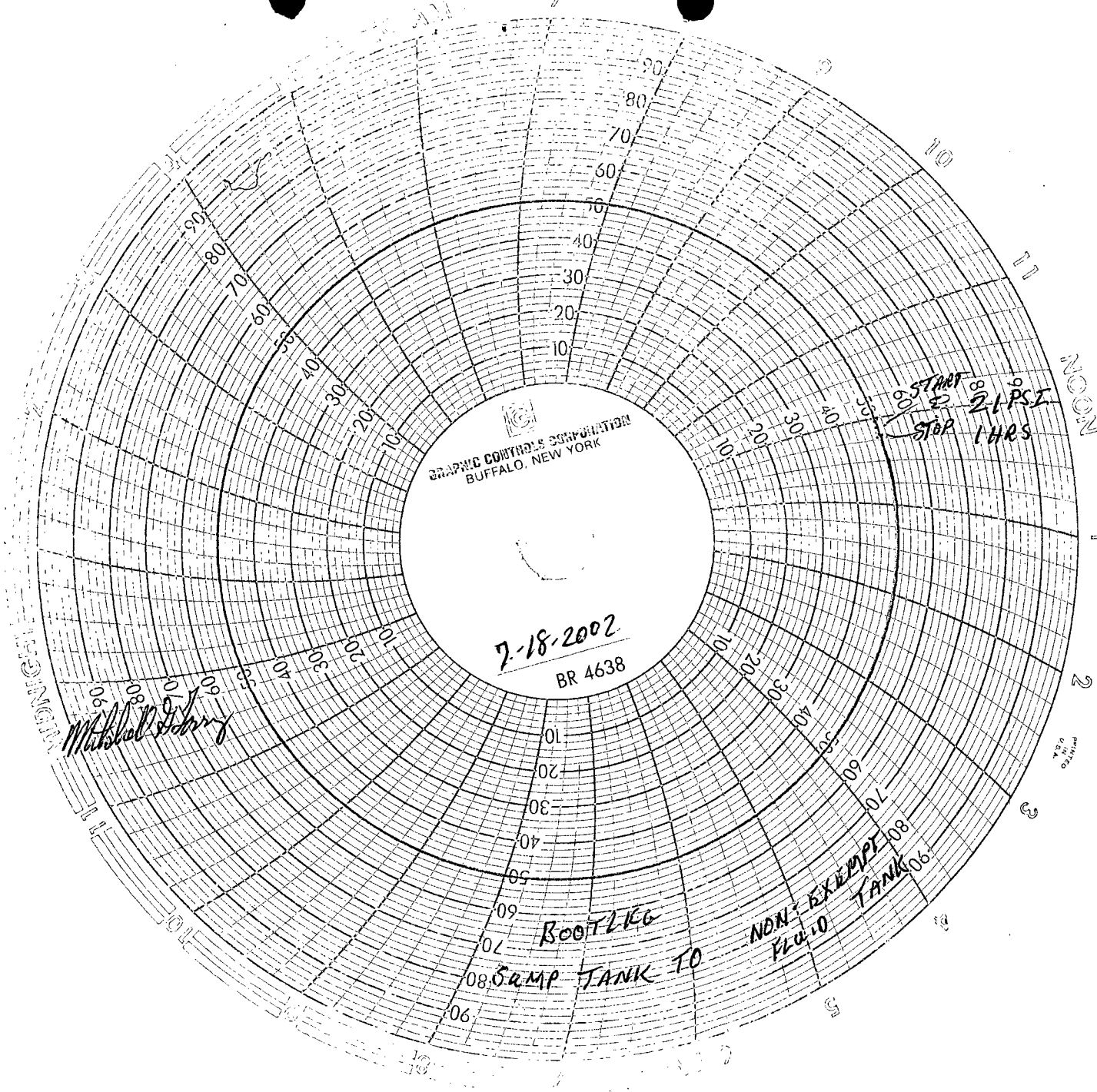
- # 1 & # 2 compressor to sump
- Sump tank to non exempt tank
- Oil drain lines to waste Lube oil tank

Pressurized drain lines for 1 hour and observed no pressure drop off on charts indicating good line integrity.

Conoco employees witnessing the test were;

Mitchell Torrez
Steve Bettis





GRAPHIC CONTROLS CORPORATION
BUFFALO, NEW YORK

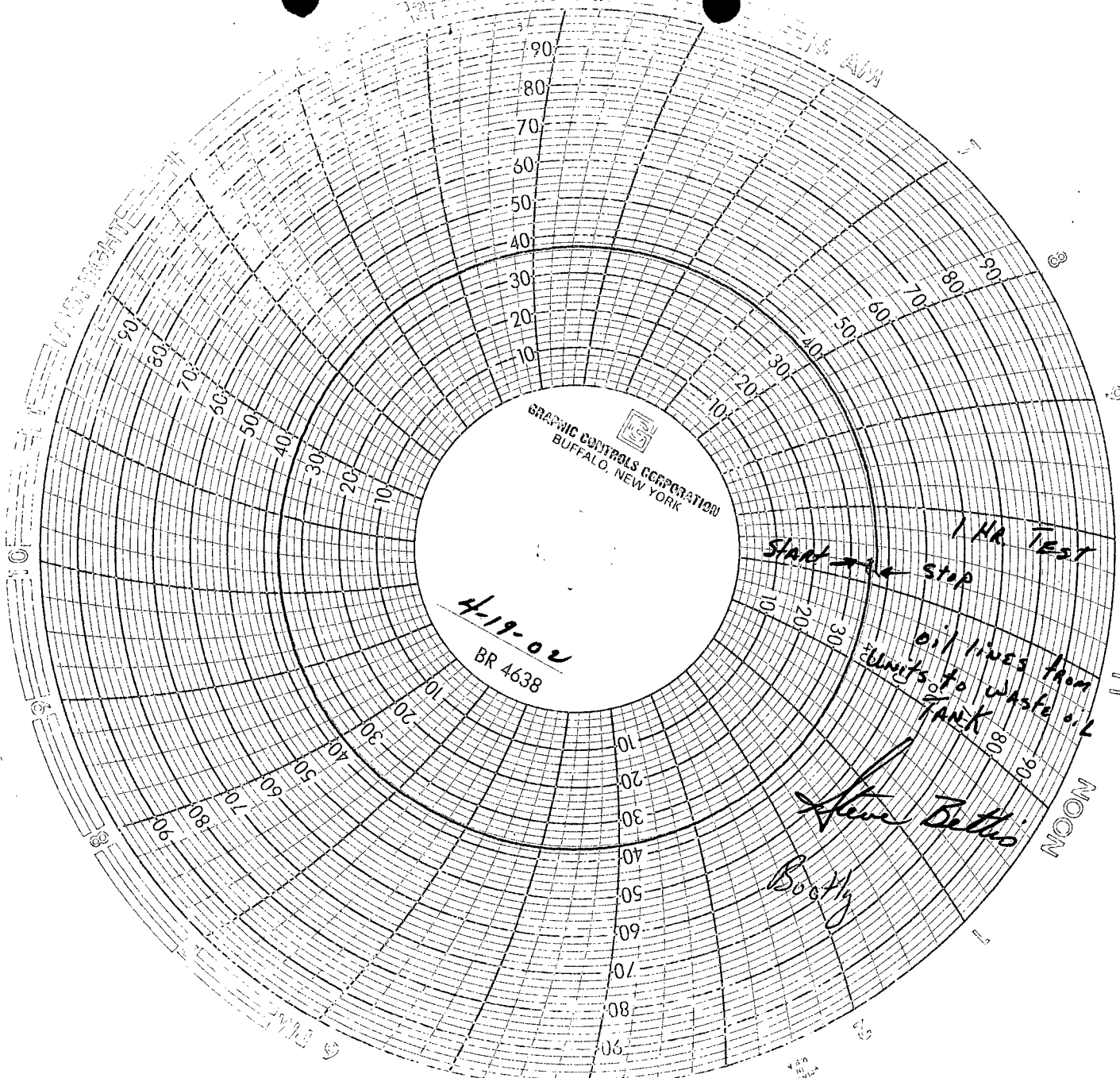
7-18-2002
BR 4638

Michael J. King

START 21 PSI
STOP 1 HRS

BOOTLEG
08 CAMP TANK TO

NON-EXEMPT 08
FLUID TANK 06



GRAPHIC CONTROLS CORPORATION
BUFFALO, NEW YORK

4-19-02
BR 4638

1 Hr. TEST
Start - stop

oil lines from
units to waste oil
TANK

Steve Bettis

Boothy



Mark Bishop
Environmental Specialist
SH&E Services
Natural Gas & Gas Products

OIL CONSERVATION DIV.
01 APR 16 PM 3:20

Conoco Inc.
P.O. Box 90
Maljamar NM 88264
Phone 505-676-3519
Cell (281) 380-0018
E-mail mark.a.bishop@usa.conoco.com

04/06/2001

Return Receipt Requested
Certified Mail No.
7099 3220 0001 4997 4275

Mr. Wayne Price
New Mexico Energy, Minerals & Natural Resources Department
Oil Conservation Division
2040 South Pacheco Street
Santa Fe, NM 87505

Re: Discharge Plan GW – 176, Bootleg Compressor Station
Inspection frequency change request

Dear Mr. Price:

Conoco, Inc. requests that the inspection frequency required in Discharge Plan Approval Condition 11 (Housekeeping) be changed to monthly. This will allow us to maintain consistency with other facility Discharge Plans.

If you have any questions or require more information please contact me at 505-676-3519.

Sincerely,

Mark Bishop

CC:

Joyce Miley
File: Env



Mark Bishop
Environmental Specialist
SH&E Services
Natural Gas & Gas Product

Conoco Inc.
921 W. Sanger
Hobbs, NM 88240
Phone 505-393-2153
Cell (281) 380-0018
E-mail mark.a.bishop@usa.conoco.com

October 9, 2001

Return Receipt Requested
Certified Mail No.
7099 3220 0001 4997 0949

State of New Mexico
Energy Minerals and Natural Resources
Oil Conservation Division
1220 South St. Francis Dr.
Santa Fe, NM 87505

RECEIVED
OCT 17 2001
Environmental Bureau
Oil Conservation Division

RE: GW-176 Discharge Plan
Bootleg Compressor Station
Testing of, Underground process/ Wastewater Lines and Below Grade
Tanks and Sumps

Dear Mr. Price:

In accordance with our OCD discharge plan the following actions were performed. Mr. Paul Sheeley of the Oil conservation Division in Hobbs was notified on May 25, 2001 of scheduled integrity tests to be performed at our Bootleg Compressor Station. On May 31 the required integrity tests were performed with no underground leaks or lack of integrity observed. A copy of the test notes and circle charts are included for your inspection.

If you have any questions or require more information please contact me at, 505-393-2153.

Sincerely,

Mark Bishop

CC: Joyce Miley
Jeff Driver
File: 215-5-23-6

Enclosed: Circle charts
Testing Procedure & results

Bootleg Compressor Station
Annual Integrity Test

ARRIVED 9:04 AM

5-31-01

DEPART 3:00 PM

Underground Containment in A Containment
Visually inspected. Cleaned containment no
Leaks observed

PERSONS ON LOCATION

Steve Bettis Coraco
Mitchell J. Jory

Bootleg Compressor Station

Final year ~~Annual~~ Integrity Test

ARRIVED 9:04 AM

5-31-01

COMPRESSOR SKID TO UNDERGROUND CONTAINMENT
INSTALLED STOPPLERS AT COMPRESSOR SKID CONTAINMENTS
BLOCKED PIPING AT UNDERGROUND CONTAINMENT (2")
INSTALLED CHART AT 9:30 AM ON PIPING AT NORTH UNIT
REMOVED CHART AT 10:35 AM

Persons on location

Steve Bettis, Conoco
Mitchell J. Jorg

UNDERGROUND CONTAINMENT TO VERTICAL TANK

5-31-01

BLOCKED AT CONTAINMENT

BLOCKED AT VERTICAL TANK

PRESSURE LINE INSTALLED AT CONTAINMENT

CHART INSTALLED AT 12:31 PM

REMOVED AT 1:34 PM

Persons on location

Steve Bettis, Conoco
Mitchell J. Jorg

UNDERGROUND OIL DRAIN LINE FROM UNITS TO HORIZONTAL TANK 5-31-01

BLOCKED AT HORIZONTAL TANK AND #2 UNIT

PRESSURE & CHART PLACED AT #1 UNIT ON 1" LINE

CHART STARTED 1:48 PM CHART STOPPED 2:49 PM

PERSONS ON LOCATION

Steve Bettis, Conoco
Mitchell J. Jorg

PRINTED IN U.S.A.

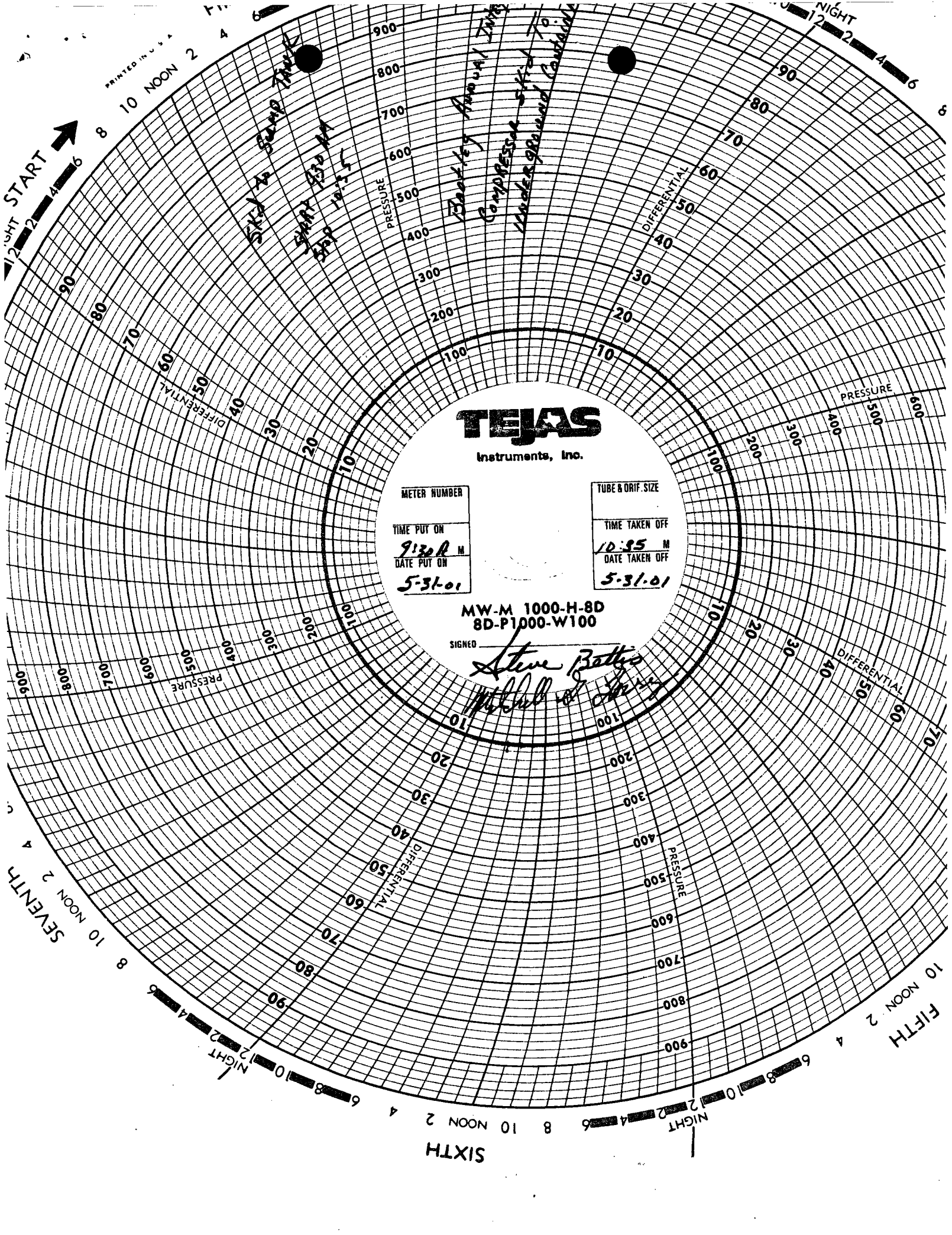
NIGHT START

SEVENTH

SIXTH

FIFTH

NIGHT



TEJAS

Instruments, Inc.

METER NUMBER

TIME PUT ON

DATE PUT ON

5-31-01

TUBE & ORIF. SIZE

TIME TAKEN OFF

DATE TAKEN OFF

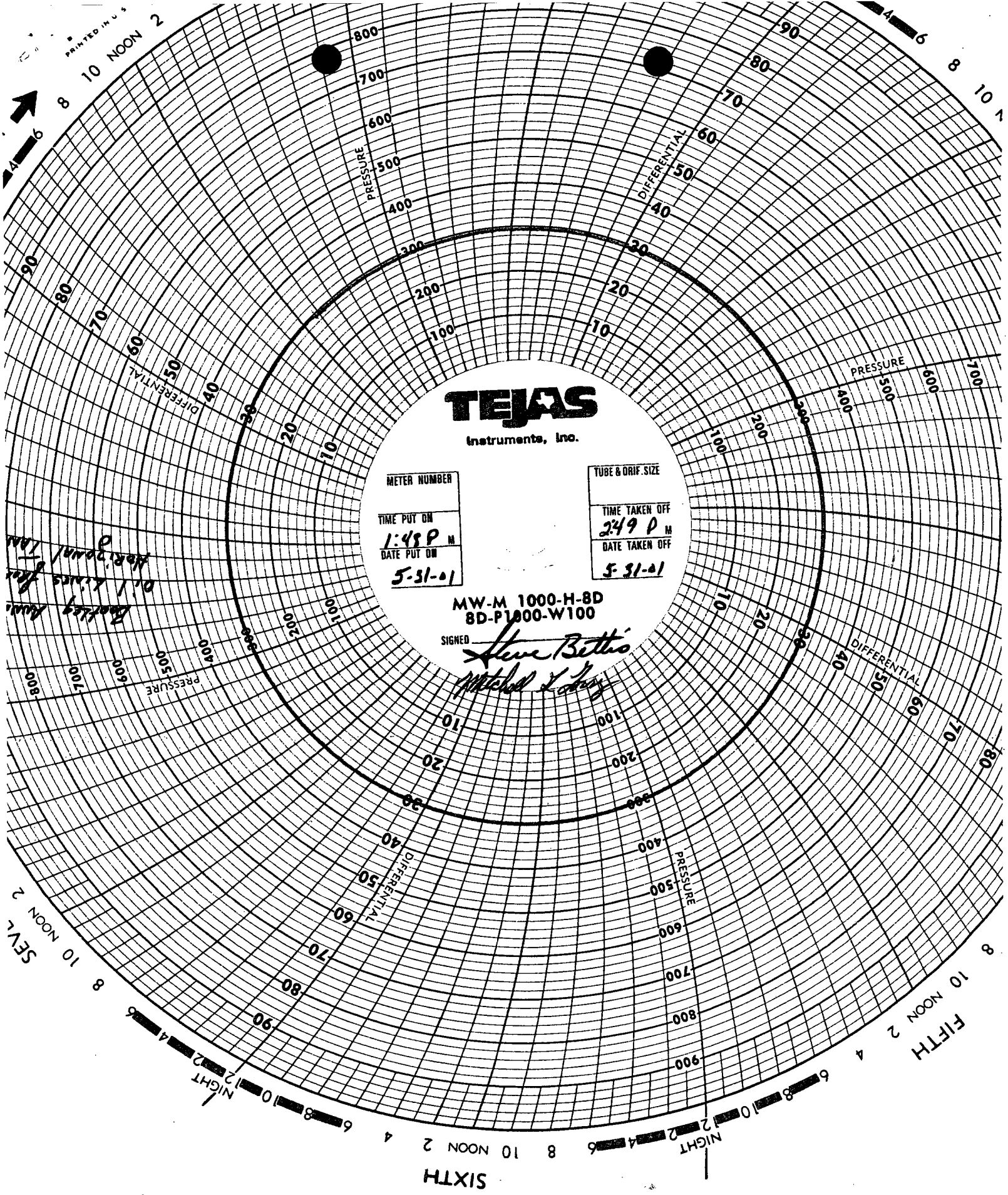
5-31-01

MW-M 1000-H-8D
8D-P1000-W100

SIGNED

Steve Batts

PRINTED IN U.S.
8 10 NOON 2



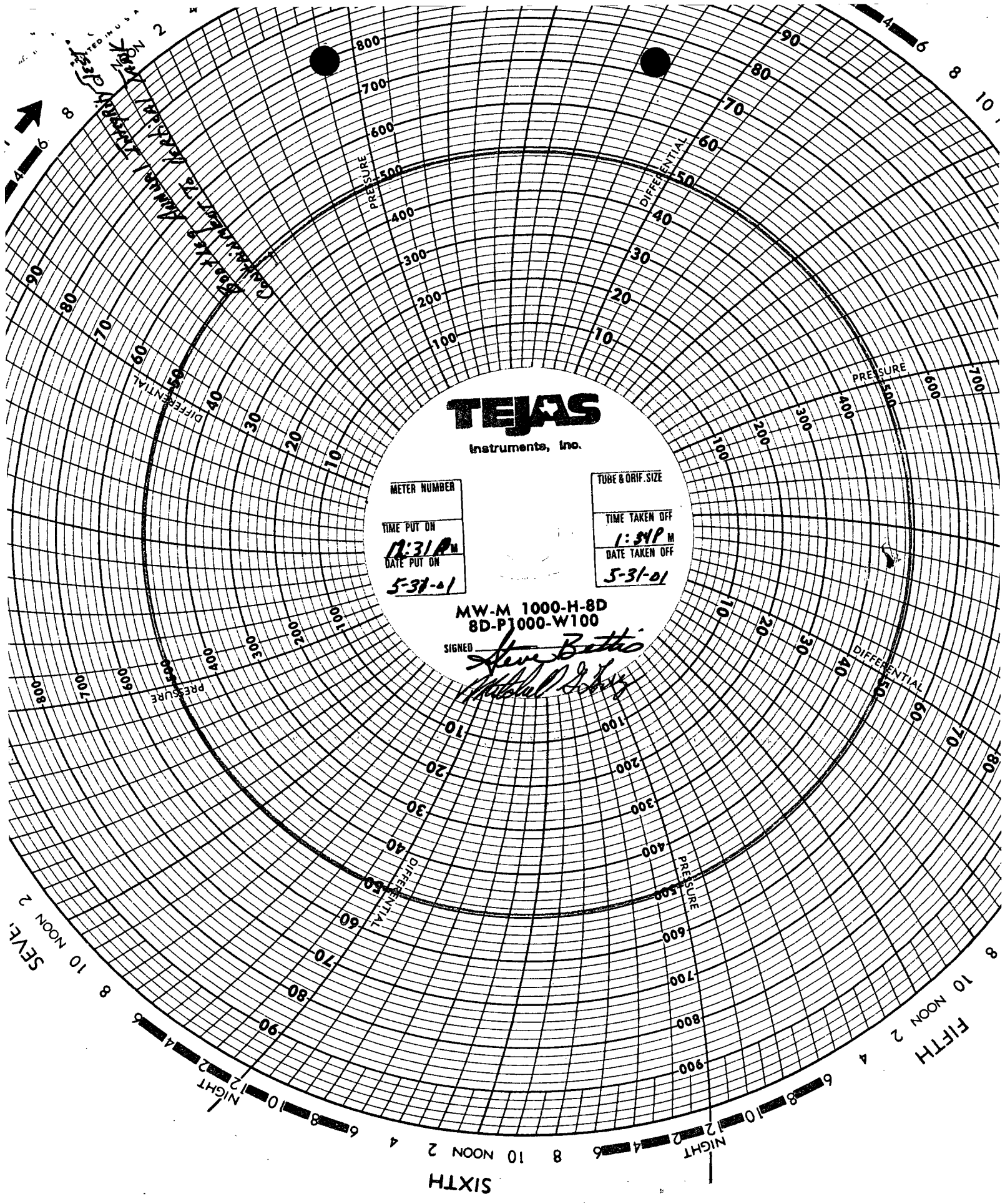
Handwritten notes on the left side of the chart:
Bentley Ann.
oil lines for
Herington Tank

SEV L
8 10 NOON 2

6 4 2
NIGHT
10 8 6 4 2
NIGHT

SIXTH

FIFTH
8 10 NOON 2



TEJAS
Instruments, Inc.

METER NUMBER

TIME PUT ON

11:31 AM

DATE PUT ON

5-31-01

TUBE & ORIF. SIZE

TIME TAKEN OFF

1:34 PM

DATE TAKEN OFF

5-31-01

MW-M 1000-H-8D
8D-P1000-W100

SIGNED

Steve Batts
Michael J. Batts



Joyce M. Miley
Environmental Consultant
Engineering and Compliance
Natural Gas & Gas Products Department

Conoco Inc.
600 N. Dairy Ashford Rd.
P.O. Box 2197, HU3036
Houston, TX 77252
Telephone: (281) 293-4498
Facsimile: (281) 293-1214

DEC 18 2000

November 30, 2000

Certified Mail No. 7099 3220 0003 1150 1803
Return Receipt Requested

Mr. Roger Anderson
Environmental Bureau Chief
New Mexico Energy, Minerals & Natural Resources Department
Oil Conservation Division
2040 South Pacheco Street
Santa Fe, New Mexico 87505

Re: Change of Ownership
Conoco Inc., Natural Gas & Gas Products Department

Dear Mr. Anderson:

Effective December 1, 2000, Conoco Inc., Natural Gas & Gas Products Department (NG&GP) assumed ownership of LG&E Natural Gathering & Processing LLC, and LG&E Natural Pipeline LLC (LG&E). These LG&E entities, in turn, own certain natural gas facilities in SE New Mexico. These facilities and their OCD Groundwater Discharge numbers are listed in the table below.

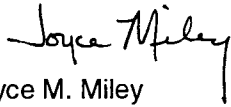
Facility Name	OCD Groundwater Discharge Permit
Antelope Ridge Gas Plant	GW-162
Hobbs Gas Plant	GW-175
Apex Compressor Station	GW-163
Bootleg (aka. NBR) Compressor Station	GW-176
Bright/Yates Compressor Station	GW-160
Cedar Canyon Compressor Station	GW-296
Cal-Mon Compressor Station	GW-143
NE Carlsbad Compressor Station	GW-280
Cotton Draw Compressor Station	GW-311
Hat Mesa Compressor Station	GW-316
Lee (aka. Lea and/or Fagan/Gillespie) Compressor Station	GW-227
Pardue Farms Compressor Station	GW-288
Pure Gold 28 Compressor Station	GW-150
Parker & Parsley (aka. Malaga) Compressor Station	GW-167

Several of these locations have conditions in their permits that require the new owner to supply a written commitment to comply with the terms and conditions of the previously approved discharge plans. LG&E has informed Conoco that all above locations are in compliance with the discharge plans. Conoco has copies of all of the approval letters and LG&E signed conditions of approval for these locations. We agree to continue to operate the locations in conformance with the groundwater permits, the approval conditions and the OCD regulations.

In addition, pursuant to certain requirements of the transaction in which Conoco acquired the entities, the names of certain entities have been changed to the following: Raptor Natural Gathering & Processing LLC and Raptor Natural Pipeline LLC (in each case replacing LG&E with Raptor).

Conoco Inc. requests that all future correspondence concerning these facilities be forwarded to me at the address above. If you have any questions or require additional information, please do not hesitate to contact Mr. Mark Bishop at (505) 623-5659 or myself at (281) 293-4498.

Sincerely,



Joyce M. Miley

cc.:

Ms. Patricia Merrill
LG&E Energy Corp.
220 West Main Street
PO Box 32030
Louisville, KY 40232-2030

Certified Mail No. 7099 3220 0003 1150 1797
Return Receipt Requested



Phone (505) 391-7797
1220 N. Grimes, Hobbs, NM 88240

LG & E Natural
Gathering and Processing Co.
921 W. Sanger
Hobbs, NM 88240

Fax (505) 391-7954
Cell (505) 370-5924

June 01, 2000

RECEIVED
NOV 13 2000
Environmental Bureau
Oil Conservation Division

Bootleg Compressor Station Stormwater Discharge Plan & SPCC Plan Determination

The following is the determination for the need of a *Stormwater Discharge Plan*, and the need for a *Spill Prevention Control and Countermeasure (SPCC)* plan for the Bootleg Compressor Station. It is prepared in accordance with federal, state, and local laws and regulations.

Storm Water Discharges Associate with Industrial Activity 40 C.F.R. 122.26(b)(14)

The term "Storm Water Discharges Associated with Industrial Activity" defined in federal regulations 40 CFR 122.26(b)(14)(i)-(xi), determined which industrial facilities are potentially subject to Phase I of the storm water program. Facilities subject to the program must apply for a permit. The definition uses either SIC (Standard Industrial Classification) codes or narrative descriptions to characterize the activities. Note that categories iii, viii, and xi have special conditions, or exceptions which may make a facility NOT subject to the program, and therefore not required to apply, even though the facility's activity matches one of the SIC codes category (i) Facilities subject to storm water effluent limitations guideline, new source performance standards, or toxic pollutant effluent standards under 40 CFR subchapter N (except facilities with toxic pollutant effluent standards which are exempted under category (xi)). These types of facilities include the following:

40 CFR Subchapter N

=====

SIC Code

- 10 metal mining (metallic mineral/ores)
- 12 coal mining
- 13 oil and gas extraction
- 14 non-metallic minerals except fuels

Oil and gas operations that discharge contaminated storm water at any time between November 16, 1987 and October 1, 1992, and that are currently not authorized by an NPDES permit, must apply for a permit. Operators of oil and gas exploration, production, processing, or treatment operations or transmission facilities, that are not required to submit a permit application as of October 1, 1992 in accordance with 40 CFR 122.26(c)(1)(iii), but that after October 1, 1992 have a discharge of a reportable quantity of oil or a hazardous substance (in a storm water discharge) for which notification is required pursuant to either 40 CFR 110.6, 117.21, or 302.6, must apply for a permit.



Phone (505) 391-7797
1220 N. Grimes, Hobbs, NM 88240

Fax (505) 391-7954
Cell (505) 370-5924

Storm Water Discharge Plan Determination

Since LG & E Natural has not had a discharge at this facility of a reportable quantity of oil or a hazardous substance (in a storm water discharge) for which notification is required pursuant to either 40 CFR 110.6, 117.21, or 302.6, a storm water discharge plan is not required for the Bootleg Compressor Station.

SPCC Regulations

An SPCC plan must be prepared by all facilities subject to regulation. This plan is to help prevent any discharge of oil into navigable waters or adjoining shorelines. The main thrust of the SPCC regulations is prevention as opposed to after-the-fact reactive measures commonly described in Spill Contingency Plans.

Facilities regulated by the SPCC regulations

There are three criteria a facility must meet to be regulated by the SPCC regulations. These criteria are

1. the facility must be non-transportation related,
2. the facility must have an aboveground storage capacity greater than 660 gallons in a single container or an aggregate storage capacity greater than 1,320 gallons or a total underground storage capacity greater than 42,000 gallons, and
3. there must be a reasonable expectation of a discharge to navigable waters or adjoining shorelines.

Non-transportation related facilities

These facilities (including all equipment and appurtenances) may include, but are not limited to:

- Fixed onshore and offshore oil well drilling facilities;
- Mobile onshore and offshore oil well drilling platforms, barges, trucks or other mobile facilities;
- Fixed onshore and offshore oil production structures, platforms, derricks and rigs;
- Mobile onshore and offshore oil production facilities;
- Oil refining or storage facilities;
- Industrial, commercial, agricultural, or public facilities that use, store, drill for, produce, gather, process, refine or consume oil or oil products;
- Waste treatment facilities;
- Loading areas/racks, transfer hoses, loading arms and other equipment that are appurtenant to a non-transportation related facility;
- Highway vehicles and railroad cars used to transport oil exclusively within the confines of a non-transportation related facility; and



Phone (505) 391-7797
1220 N. Grimes, Hobbs, NM 88240

Fax (505) 391-7954
Cell (505) 370-5924

- Pipeline systems used to transport oil exclusively within the confines of a non-transportation related facility.

Oil storage capacity defined

Oil storage includes all containers storing oil at a facility. The **capacity** of the containers (maximum volume) must be considered and **not** the actual amount of product stored in the container (operational volume). Oil storage containers include, but are not limited to,

- tanks,
- containers,
- pails,
- drums,
- quart containers,
- transformers,
- oil-filled equipment, and
- mobile or portable totes.

A facility may be subject to SPCC regulations if they have at least one of the following oil storage capacities:

- If a facility has one aboveground oil storage container greater than 660 gallons; **or**
- If a facility has a total aboveground oil storage capacity greater than 1,320 gallons; **or**
- If a facility has a total underground oil storage capacity of greater than 42,000 gallons.

Under the SPCC regulations, oil is defined as

"oil of any kind or in any form including, but not limited to, petroleum, fuel oil, sludge, oil refuse and oil mixed with wastes other than dredged spoil and oily mixtures."

This also includes non-petroleum oils, animal and vegetable oils.

Discharge of oil into or upon navigable waters or adjoining shorelines

This determination is based upon a consideration of the geographical and locational aspects of the facility. The location of the facility must be considered in relation to streams, ponds and ditches (perennial or intermittent), storm or sanitary sewers, wetlands, mudflats, sandflats or farm tile drains. The distance to navigable waters, volume of material stored, worst case weather conditions, drainage patterns, land contours, soil conditions, etc., must also be taken into account. Further, according to the regulations, this determination shall **not** include consideration of man-made features such as dikes, equipment or other structures that may serve to restrain, hinder, contain or **prevent** an oil discharge.




Phone (505) 391-7797
1220 N. Grimes, Hobbs, NM 88240


Fax (505) 391-7954
Cell (505) 370-5924

Determination of Need for SPCC

Under the above definitions (from the regulations) the possibility for the discharge of oil into or upon navigable waters or adjoining shorelines, the Bootleg Compressor Station does not require a SPCC plan. Considering the location of the facility in relation to streams, ponds and ditches (perennial or intermittent), storm or sanitary sewers, wetlands, mudflats, sandflats or farm tile drains, the distance to navigable waters, volume of material stored, worst case weather conditions, drainage patterns, land contours, and soil conditions, a discharge of oil into or upon navigable waters or adjoining shorelines is virtually impossible.

Persons making this determination are:


Dyke Browning
Registered Environmental Manager #7771
Certified Environmental Inspector #12441


Lee Hinman
Registered Professional Engineer
Texas #75230

The Santa Fe New Mexican

Since 1849. We Read You.

DEC - 8 1999

NM OIL CONSERVATION DIVISION
2040 S. PACHECO ST.
SANTA FE, NM 87505
ATTN: LUPE SHERMAN

AD NUMBER: 122103 ACCOUNT: 56689
LEGAL NO: 66545 P.O.#: 00199000278
175 LINES 1 time(s) at \$ 77.05
AFFIDAVITS: 5.25
TAX: 5.14
TOTAL: 87.44

NOTICE OF PUBLICATION

STATE OF NEW MEXICO ENERGY, MINERALS AND NATURAL RESOURCES DEPARTMENT OIL CONSERVATION DIVISION

Notice is hereby given that pursuant to New Mexico Water Quality Control Commission Regulations, the following discharge plan application has been submitted to the Director of the Oil Conservation Division, 2040 South Pacheco, Santa Fe, New Mexico 87505, Telephone (505) 827-7131:

(GW-176) LG&E Natural Gathering and Processing Co., J.R. Delaney, Operations Manager, 921 W. Sanger, Hobbs, New Mexico, 88240, has submitted a renewal application for the previously approved discharge plan for their Bootleg Compressor Station located in the NW/4 SE/4 Section 18, Township 22 South, Range 33 East, NMPM, Lea County, New Mexico. Approximately 39 barrels per day of produced water, with a total dissolved solids concentration of approximately 10000 mg/l, and condensate will be collected and stored in above ground tanks prior to transport to an OCD approved offsite disposal facility. Groundwater most likely to be affected in the event of an accidental discharge is at a depth of approximately 244 feet with a total dissolved solids concentration of approximately 1973 mg/l. The discharge plan addresses how spills, leaks, and other accidental discharges to the surface will be man-

aged.

Any interested person may obtain further information from the Oil Conservation Division and may submit written comments to the Director of the Oil Conservation Division at the address given above. The discharge plan application may be viewed at the above address between 8:00 a.m. and 4:00 p.m., Monday through Friday. Prior to ruling on any proposed discharge plan or its modification, the Director of the Oil Conservation Division shall allow at least thirty (30) days after the date of publication of this notice during which comments may be submitted to him and a public hearing may be requested by any interested person. Requests for a public hearing shall set forth the reasons why a hearing should be held. A hearing will be held if the Director determines there is significant public interest.

If no public hearing is held, the Director will approve or disapprove the proposed plan based on information available. If a public hearing is held, the director will approve or disapprove the proposed plan based on information in the plan and information submitted at the hearing.

GIVEN under the Seal of New Mexico Oil Conservation Commission at Santa Fe, New Mexico, on this first day of December, 1999.

STATE OF NEW MEXICO
OIL CONSERVATION
DIVISION
LORI WROTENBERY,
Director

Legal #66545
Pub. December 7, 1999

AFFIDAVIT OF PUBLICATION

STATE OF NEW MEXICO
COUNTY OF SANTA FE

I, B. Perner being first duly sworn declare and say that I am Legal Advertising Representative of THE SANTA FE NEW MEXICAN, a daily newspaper published in the English language, and having a general circulation in the Counties of Santa Fe and Los Alamos, State of New Mexico and being a Newspaper duly qualified to publish legal notices and advertisements under the provisions of Chapter 167 on Session Laws of 1937; that the publication #66545 a copy of which is hereto attached was published in said newspaper 1 day(s) between 12/07/1999 and 12/07/1999 and that the notice was published in the newspaper proper and not in any supplement; the first publication being on the 7 day of December, 1999 and that the undersigned has personal knowledge of the matter and things set forth in this affidavit.

/S/

B. Perner
LEGAL ADVERTISEMENT REPRESENTATIVE

Subscribed and sworn to before me on this
7 day of December A.D., 1999

Notary

Commission Expires

3-13-2001

OK BY WAYNE PRICE JP



OFFICIAL SEAL
B MATHIE
NOTARY PUBLIC
STATE OF NEW MEXICO

My Commission Expires

The Santa Fe New Mexican

Since 1849. We Read You.

DEC - 8 1999

NM OIL CONSERVATION DIVISION
2040 S. PACHECO ST.
SANTA FE, NM 87505
ATTN: LUPE SHERMAN

AD NUMBER: 122103 ACCOUNT: 56689
LEGAL NO: 66545 P.O.#: 00199000278
175 LINES 1 time(s) at \$ 77.05
AFFIDAVITS: 5.25
TAX: 5.14
TOTAL: 87.44

NOTICE OF PUBLICATION

STATE OF NEW MEXICO ENERGY, MINERALS AND NATURAL RESOURCES DEPARTMENT OIL CONSERVATION DIVISION

Notice is hereby given that pursuant to New Mexico Water Quality Control Commission Regulations, the following discharge plan application has been submitted to the Director of the Oil Conservation Division, 2040 South Pacheco, Santa Fe, New Mexico 87505, Telephone (505) 827-7131:

(GW-176) - LG&E Natural Gathering and Processing Co., J.R. Delaney, Operations Manager, 921 W. Sangre, Hobbs, New Mexico, 88240, has submitted a renewal application for the previously approved discharge plan for their Bootleg Compressor Station located in the

NW/4 SE/4 Section 18, Township 22 South, Range 33 East, NMPM, Lea County, New Mexico. Approximately 39 barrels per day of produced water, with a total dissolved solids concentration of approximately 10000 mg/l, and condensate will be collected and stored in above ground tanks prior to transport to an OCD approved offsite disposal facility. Groundwater most likely to be affected in the event of an accidental discharge is at a depth of approximately 244 feet with a total dissolved solids concentration of approximately 1973 mg/l. The discharge plan addresses how spills, leaks, and other accidental discharges to the surface will be man-

aged.

Any interested person may obtain further information from the Oil Conservation Division and may submit written comments to the Director of the Oil Conservation Division at the address given above. The discharge plan application may be viewed at the above address between 8:00 a.m. and 4:00 p.m., Monday through Friday. Prior to ruling on any proposed discharge plan or its modification, the Director of the Oil Conservation Division shall allow at least thirty (30) days after the date of publication of this notice during which comments may be submitted to him and a public hearing may be requested by any interested person. Requests for a public hearing shall set forth the reasons why a hearing should be held. A hearing will be held if the Director determines there is significant public interest.

If no public hearing is held, the Director will approve or disapprove the proposed plan based on information available. If a public hearing is held, the director will approve or disapprove the proposed plan based on information in the plan and information submitted at the hearing.

GIVEN under the Seal of New Mexico Oil Conservation Commission at Santa Fe, New Mexico, on this first day of December, 1999.

STATE OF NEW MEXICO
OIL CONSERVATION
DIVISION
LORI WROTENBERY,
Director

Legal #66545
Pub. December 7, 1999

AFFIDAVIT OF PUBLICATION

STATE OF NEW MEXICO
COUNTY OF SANTA FE

I, B. Perner being first duly sworn declare and say that I am Legal Advertising Representative of THE SANTA FE NEW MEXICAN, a daily newspaper published in the English language, and having a general circulation in the Counties of Santa Fe and Los Alamos, State of New Mexico and being a Newspaper duly qualified to publish legal notices and advertisements under the provisions of Chapter 167 on Session Laws of 1937; that the publication #66545 a copy of which is hereto attached was published in said newspaper 1 day(s) between 12/07/1999 and 12/07/1999 and that the notice was published in the newspaper proper and not in any supplement; the first publication being on the 7 day of December, 1999 and that the undersigned has personal knowledge of the matter and things set forth in this affidavit.

/S/

Betty Perner
LEGAL ADVERTISEMENT REPRESENTATIVE

Subscribed and sworn to before me on this
7 day of December A.D., 1999

Notary

Commission Expires

2-13-2001

OK BY WAYNE PRICE



OFFICIAL SEAL
B MATHIE
NOTARY PUBLIC
STATE OF NEW MEXICO

My Commission Expires

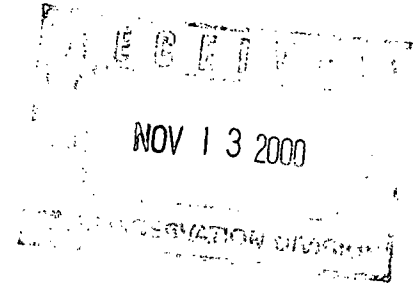
LG&E POWER INC.

November 9, 2000

LG&E Natural Gathering & Processing LLC

921 W. Sanger
Hobbs, New Mexico 88240
(505) 393-2153
(505) 393-0381 FAX

Mr. Wayne Price
New Mexico Energy, Minerals & Natural Resources Department
Oil Conservation Division
2040 South Pacheco Street
Santa Fe, New Mexico 87505



Dear Mr. Price

I am enclosing a copy of the drain and sump system tests for the Bootleg and the Malaga Compressor stations. I am not sure if you have received a copy of these earlier this year or not, so I am sending you these copies to make sure you have them.

If you need any further information please let me know.

Sincerely

Ed Sloman
Supervisor
Operations Support

To: Ed Sloman

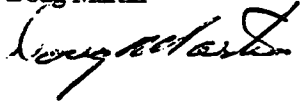
From: Doug Martin

Subject: Under ground piping test

Date: 04/24/00

On the 18th day of April all the under ground piping, containing fluids, were successfully tested with at least 10 pounds above the normal operating pressure. All the lines were held with the additional pressure for a minimum of two hours with no pressure drop.

Doug Martin



Boat leg

Continued to Scarp

Sec. Schubert

35 pounds
35-
35-
35-
35-
35-
35-
35-
35-

Dehy Condensation TK

Swamp to TKS

OIL day THs

10 pounds
10
10
10
10
10
10
10
10
10

10 pounds
10
10.5
10.5
10.5
10.5
10.5
10.5
10.5

The Santa Fe New Mexican

Since 1849. We Read You.

NM OIL CONSERVATION DIVISION
2040 S. PACHECO ST.
SANTA FE, NM 87505
ATTN: LUPE SHERMAN

AD NUMBER: 122103 ACCOUNT: 56689
LEGAL NO: 66545 P.O.#: 00199000278
175 LINES 1 time(s) at \$ 77.05
AFFIDAVITS: 5.25
TAX: 5.14
TOTAL: 87.44

NOTICE OF PUBLICATION

STATE OF NEW MEXICO ENERGY, MINERALS AND NATURAL RESOURCES DEPARTMENT OIL CONSERVATION DIVISION

Notice is hereby given that pursuant to New Mexico Water Quality Control Commission Regulations, the following discharge plan application has been submitted to the Director of the Oil Conservation Division, 2040 South Pacheco, Santa Fe, New Mexico 87505, Telephone (505) 827-7131:

(GW-176) - LG&E Natural Gathering and Processing Co., J.R. Delaney, Operations Manager, 921 W. Sang-er, Hobbs, New Mexico, 88240, has submitted a renewal application for the previously approved discharge plan for their Bootleg Com-pressor Station located in the NW/4 SE/4 Section 18, Town-ship 22 South, Range 33 East, NMPM, Lea County, New Mexico. Approximately 39 barrels per day of produced water, with a total dissolved solids concentration of ap-proximately 10000 mg/l, and condensate will be collected and stored in above ground tanks prior to transport to an OCD approved offsite dispo-sal facility. Groundwater most likely to be affected in the event of an accidental dis-charge is at a depth of ap-proximately 244 feet with a total dissolved solids concen-tration of approximately 1973 mg/l. The discharge plan ad-dresses how spills, leaks, and other accidental discharges to the surface will be man-

aged.

Any interested person may obtain further information from the Oil Conservation Di- vision and may submit writ- ten comments to the Director of the Oil Conservation Divi- sion at the address given above. The discharge plan application may be viewed at the above address between 8:00 a.m. and 4:00 p.m., Mon- day through Friday. Prior to ruling on any proposed dis- charge plan or its modifica- tion, the Director of the Oil Conservation Division shall allow at least thirty (30) days after the date of publication of this notice during which comments may be submitted to him and a public hearing may be requested by any in- terested person. Requests for a public hearing shall set forth the reasons why a hear- ing should be held. A hearing will be held if the Director de- termines there is significant public interest.

If no public hearing is held, the Director will approve or disapprove the proposed plan based on information availa- ble. If a public hearing is held, the director will ap- prove or disapprove the pro- posed plan based on informa- tion in the plan and informa- tion submitted at the hear- ing.

GIVEN under the Seal of New Mexico Oil Conservation Commission at Santa Fe, New Mexico, on this first day of December, 1999.

STATE OF NEW MEXICO
OIL CONSERVATION
DIVISION
LORI WROTENBERY,
Director

Legal #66545
Pub. December 7, 1999

AFFIDAVIT OF PUBLICATION

STATE OF NEW MEXICO COUNTY OF SANTA FE

I, B. Perner being first duly sworn declare and say that I am Legal Advertising Representative of THE SANTA FE NEW MEXICAN, a daily newspaper published in the English language, and having a general circulation in the Counties of Santa Fe and Los Alamos, State of New Mexico and being a Newspaper duly qualified to publish legal notices and advertisements under the provisions of Chapter 167 on Session Laws of 1937; that the publication #66545 a copy of which is hereto attached was published in said newspaper 1 day(s) between 12/07/1999 and 12/07/1999 and that the notice was published in the newspaper proper and not in any supplement; the first publication being on the 7 day of December, 1999 and that the undersigned has personal knowledge of the matter and things set forth in this affidavit.

/S/ _____
LEGAL ADVERTISEMENT REPRESENTATIVE

Subscribed and sworn to before me on this
7 day of December A.D., 1999

Notary _____

Commission Expires _____

ACKNOWLEDGEMENT OF RECEIPT
OF CHECK/CASH

I hereby acknowledge receipt of check No. [REDACTED] dated 2/23/00,
or cash received on _____ in the amount of \$ 345⁰⁰

from LG&E

for BOOTLEG COMP. ST.

GW-176

Submitted by: WAYNE PRICE

Date: 2/25/00

Submitted to ASD by: [Signature]

Date: "

Received in ASD by: _____

Date: _____

Filing Fee ☒ New Facility _____ Renewal ☒

Modification _____ Other _____

(specify)

Organization Code 521.07 Applicable FY 2000

To be deposited in the Water Quality Management Fund.

Full Payment ☒ or Annual Increment _____

THIS CHECK IS VOID WITHOUT A COLORED BACKGROUND AND AN ARTIFICIAL WATERMARK CERTIFICATION SEAL ON THE BACK - HOLD AT ANGLE TO VIEW SEAL

LG&E Natural Gathering & Processing

2777 Stemmons Frwy, Suite 1700
Dallas TX 75207

PNC Bank, National Association
Jeannette PA

60-162
433

Pay

Date	Amount
02/23/00	\$*****345.00

THREE HUNDRED FORTY FIVE AND 00/100 *****

Dollars

TO
THE
ORDER
OF
WATER QUALITY MANAGEMENT FUND
STATE OF NEW MEXICO
PO BOX 2088
SANTA FE NM 87504-2088

Patricia A. Lockwood

GW-176

THIS CHECK HAS A COLORED BACKGROUND • BORDER CONTAINS MICROPRINTING



NEW MEXICO ENERGY, MINERALS
& NATURAL RESOURCES DEPARTMENT

OIL CONSERVATION DIVISION
2040 South Pacheco Street
Santa Fe, New Mexico 87505
(505) 827-7131

February 3, 2000

CERTIFIED MAIL

RETURN RECEIPT NO. Z 142 564 938

Mr. J.R. Delaney
LG&E Energy Marketing Inc.
921 West Sanger
Hobbs, New Mexico 88240

Re: Discharge Plan (GW-176)
Bootleg Compressor Station
Lea County, New Mexico

Dear Mr. Delaney:

The groundwater discharge plan renewal application for the Bootleg Compressor Station GW-176 operated by LG&E Energy Marketing Inc. located in the NW/4, SE/4 of Section 18, Township 22 South, Range 33 East, NMPM, Lea County, New Mexico **is hereby approved** under the conditions contained in the enclosed attachment. Enclosed are two copies of the conditions of approval. **Please sign and return one copy to the New Mexico Oil Conservation Division (OCD) Santa Fe Office within ten working days of receipt of this letter.**

The original discharge plan application was submitted on October 21, 1994 and approved on January 20, 1995. The discharge plan renewal application, including attachments, dated October 18, 1999 submitted pursuant to Sections 5101.B.3. of the New Mexico Water Quality Control Commission (WQCC) Regulations also includes all earlier applications and all conditions later placed on those approvals. The discharge plan is renewed pursuant to Section 5101.A. and 3109.C. Please note Section 3109.G., which provides for possible future amendment of the plan. Please be advised that approval of this plan does not relieve LG&E Energy Marketing Inc. of liability should operations result in pollution of surface or ground waters, or the environment.

Please be advised that all exposed pits, including lined pits and open top tanks (exceeding 16 feet in diameter) shall be screened, netted, or otherwise rendered nonhazardous to wildlife including migratory birds.

Please note that Section 3104. of the regulations requires that "when a plan has been approved, discharges must be consistent with the terms and conditions of the plan." Pursuant to Section 3107.C., LG&E Energy Marketing Inc. is required to notify the Director of any facility expansion, production increase, or process modification that would result in any change in the discharge of water quality or volume.

Pursuant to Section 3109.H.4., this approval is for a period of five years. **This approval will expire January 20, 2005** and an application for renewal should be submitted in ample time before that date. Pursuant to Section 5101.F. of the regulations, if a discharger submits a discharge plan renewal application at least 120 days before the discharge plan expires and is in compliance with the approved plan, then the existing discharge plan will not expire until the application for renewal has been approved or disapproved. It should be noted that all discharge plan facilities will be required to submit plans for, or the results of, an underground drainage testing program as a requirement for discharge plan renewal.

The discharge plan application for the LG&E Energy Marketing Inc. Bootleg Compressor Station is subject to the WQCC Regulation 3114. Every billable facility submitting a discharge plan will be assessed a fee equal to the filing fee of \$50 plus a renewal fee of \$345.00 for compressor stations with horsepower between 1000 and 3000. The OCD has not received the \$345.00 flat fee. The flat fee of \$345.00 may be paid in a single payment due on the date of the discharge plan approval or in five equal installments over the expected duration of the discharge plan. Installment payments shall be remitted yearly, with the first installment due on the date of the discharge plan approval and subsequent installments due on this date of each calendar year.

Please make all checks payable to: **NMED-Water Quality Management** and addressed to the OCD Santa Fe Office.

If you have any questions, please contact Wayne Price of my staff at (505-827-7155). On behalf of the staff of the OCD, I wish to thank you and your staff for your cooperation during this discharge plan review.

Sincerely,



Roger Anderson
Environmental Bureau Chief
RCA/lwp

Attachment-1

xc: OCD Hobbs Office

**ATTACHMENT TO THE DISCHARGE PLAN GW-176 APPROVAL
LG&E Energy Marketing Inc. Bootleg Compressor Station (GW-176)
DISCHARGE PLAN APPROVAL CONDITIONS
February 3, 2000**

1. Payment of Discharge Plan Fees: The \$50.00 filing fee has been received by OCD. The \$345.00 flat fee shall be submitted upon receipt of this approval. The required flat fee may be paid in a single payment due at the time of approval, or in equal annual installments over the duration of the plan, with the first payment due upon receipt of this approval.
2. Commitments: LG&E Energy Marketing Inc. will abide by all commitments submitted in the discharge plan renewal application dated October 18, 1999 and these conditions for approval.
3. Drum Storage: All drums containing materials other than fresh water must be stored on an impermeable pad with curbing. All empty drums should be stored on their sides with the bungs in place and lined up on a horizontal plane. Chemicals in other containers such as sacks or buckets must also be stored on an impermeable pad with curbing.
4. Process Areas: All process and maintenance areas which show evidence that leaks and spills are reaching the ground surface must be either paved and curbed or have some type of spill collection device incorporated into the design.
5. Above Ground Tanks: All above ground tanks which contain fluids other than fresh water must be bermed to contain a volume of one-third more than the total volume of the largest tank or of all interconnected tanks. All new facilities or modifications to existing facilities must place the tank on an impermeable type pad within the berm.
6. Above Ground Saddle Tanks: Above ground saddle tanks must have impermeable pad and curb type containment unless they contain fresh water or fluids that are gases at atmospheric temperature and pressure.

7. Labeling: All tanks, drums, and other containers should be clearly labeled to identify their contents and other emergency information necessary if the tank were to rupture, spill, or ignite.
8. Below Grade Tanks/Sumps: All below grade tanks, sumps, and pits must be approved by the OCD prior to installation or upon modification and must incorporate secondary containment and leak-detection into the design. All pre-existing sumps and below-grade tanks must be tested to demonstrate their mechanical integrity no later than April 1, 2000 and every year from tested date, thereafter. Permittees may propose various methods for testing such as pressure testing to 3 pounds per square inch above normal operating pressure and/or visual inspection of cleaned out tanks and/or sumps, or other OCD approved methods. The OCD will be notified at least 72 hours prior to all testing. The test results will be submitted to OCD by April 31, 2000.
9. Underground Process/Wastewater Lines: All underground process/wastewater pipelines must be tested to demonstrate their mechanical integrity no later than April 1, 2000 and every 5 years, from tested date, thereafter. Permittees may propose various methods for testing such as pressure testing to 3 pounds per square inch above normal operating pressure or other means acceptable to the OCD. The OCD will be notified at least 72 hours prior to all testing. The test results will be submitted to OCD by April 30, 2000.
10. Class V Wells: No Class V wells that inject non-hazardous industrial wastes or a mixture of industrial wastes and domestic wastes will be approved for construction and/or operation unless it can be demonstrated that groundwater will not be impacted in the reasonably foreseeable future. Leach fields and other wastewater disposal systems at OCD regulated facilities which inject non-hazardous fluid into or above an underground source of drinking water are considered Class V injection wells under the EPA UIC program. Class V wells that inject domestic waste only must be permitted by the New Mexico Environment Department.
11. Housekeeping: All systems designed for spill collection/prevention, and leak detection will be inspected daily to ensure proper operation and to prevent overtopping or system failure.
12. Spill Reporting: All spills/releases shall be reported pursuant to OCD Rule 116. and WQCC 1203. to the OCD Hobbs District Office.

13. Waste Disposal: All wastes will be disposed of at an OCD approved facility. Only oilfield exempt wastes shall be disposed of down Class II injection wells. Non-exempt oilfield wastes that are non-hazardous may be disposed of at an OCD approved facility upon proper waste characterization per 40 CFR Part 261.
14. Transfer of Discharge Plan: The OCD will be notified prior to any transfer of ownership, control, or possession of a facility with an approved discharge plan. A written commitment to comply with the terms and conditions of the previously approved discharge plan must be submitted by the purchaser and approved by the OCD prior to transfer.
15. Closure: The OCD will be notified when operations of the facility are discontinued for a period in excess of six months. Prior to closure of the facility a closure plan will be submitted for approval by the Director. Closure and waste disposal will be in accordance with the statutes, rules and regulations in effect at the time of closure.
16. OCD Inspections: Additional requirements may be placed on the facility based upon results from OCD inspections.
17. Certification: **LG&E Energy Marketing Inc.** by the officer whose signature appears below, accepts this permit and agrees to comply with all terms and conditions contained herein. **LG&E Energy Marketing Inc.** further acknowledges that these conditions and requirements of this permit may be changed administratively by the Division for good cause shown as necessary to protect fresh water, human health and the environment.

Conditions accepted by: **LG&E Energy Marketing Inc.**

Company Representative- print name

Date _____
Company Representative- Sign

Title _____

Affidavit of Publication

STATE OF NEW MEXICO)

) ss.

COUNTY OF LEA)

Joyce Clemens being first duly sworn on oath deposes and says that she is Advertising Director of **THE LOVINGTON DAILY LEADER**, a daily newspaper of general paid circulation published in the English language at Lovington, Lea County, New Mexico; that said newspaper has been so published in such county continuously and uninterruptedly for a period in excess of Twenty-six (26) consecutive weeks next prior to the first publication of the notice hereto attached as hereinafter shown; and that said newspaper is in all things duly qualified to publish legal notices within the meaning of Chapter 167 of the 1937 Session Laws of the State of New Mexico.

That the notice which is hereto attached, entitled

Notice of Publication GW-176

was published in a regular and entire issue of **THE LOVINGTON DAILY LEADER** and not in any supplement thereof, for One(1) Day, beginning with the issue of December 7, 1999 and ending with the issue of December 7, 1999.

And that the cost of publishing said notice is the sum of \$ 56.76 which sum has been (Paid) as Court Costs.

Joyce Clemens

Subscribed and sworn to before me this day of December 7, 1999.

Debbie Schilling

Notary Public, Lea County, New Mexico

My Commission Expires June 22, 2002

Approved
1/18/2000

LEGAL NOTICE NOTICE OF PUBLICATION STATE OF NEW MEXICO ENERGY, MINERALS AND NATURAL RESOURCES DEPARTMENT OIL CONSERVATION DIVISION

Notice is hereby given that pursuant to New Mexico Water Quality Control Commission Regulations, the following discharge plan application has been submitted to the Director of the Oil Conservation Division, 2040 South Pacheco, Santa Fe, New Mexico 87505, Telephone: (505) 827-7131:

(GW-176) - LG&E Natural Gathering and Processing Co., J.R. Delaney, Operations Manager, 921 W. Sanger, Hobbs, New Mexico, 88240, has submitted a renewal application for the previously approved discharge plan for their **Bootleg Compressor Station** located in the NW/4 SE/4 Section 18, Township 22 South, Range 33 East, NMPM, Lea County, New Mexico. Approximately 39 barrels per day of produced water, with a total dissolved solids concentration of approximately 10000 mg/l, and condensate will be collected and stored in above ground tanks prior to transport to an OCD approved off-site disposal facility. Groundwater most likely to be affected in the event or an accidental

discharge is at a depth of approximately 224 feet with a total dissolved solids concentration of approximately 1973 mg/l. The discharge plan addresses how spills, leaks, and other accidental discharges to the surface will be managed.

Any interested person may obtain further information from the Oil Conservation Division and may submit written comments to the Director of the Oil Conservation Division at the address given above. The discharge plan application may be viewed at the above address between 8:00 a.m. and 4:00 p.m. Monday through Friday. Prior to ruling on any proposed discharge plan or its modification, the Director of the Oil Conservation Division shall allow at least thirty (30) days after the date of publication of this notice during which comments may be submitted to him and a public hearing may be requested by any interested person. Requests for a public hearing shall set forth the reasons why a hearing should be held. A hearing will be held if the Director determines there is significant public interest.

If no public hearing is held, the Director will approve or disapprove the proposed plan based on information available. If a public hearing is held, the director will approve or disapprove the proposed plan based on information in the plan and information submitted at the hearing.

GIVEN under the Seal of New Mexico Oil Conservation Commission at Santa Fe, New Mexico, on this first day of December, 1999.

STATE OF
NEW MEXICO
OIL CONSERVATION
DIVISION
Lori Wrotenbery,
Director

(SEAL)

Published in the
Lovington Daily Leader
December 7, 1999.



**NEW MEXICO ENERGY, MINERALS
& NATURAL RESOURCES DEPARTMENT**

OIL CONSERVATION DIVISION
2040 South Pacheco Street
Santa Fe, New Mexico 87505
(505) 827-7131

NOTICE OF PUBLICATION

**STATE OF NEW MEXICO
ENERGY, MINERALS AND NATURAL RESOURCES DEPARTMENT
OIL CONSERVATION DIVISION**

Notice is hereby given that pursuant to New Mexico Water Quality Control Commission Regulations, the following discharge plan application has been submitted to the Director of the Oil Conservation Division, 2040 South Pacheco, Santa Fe, New Mexico 87505, Telephone (505) 827-7131:

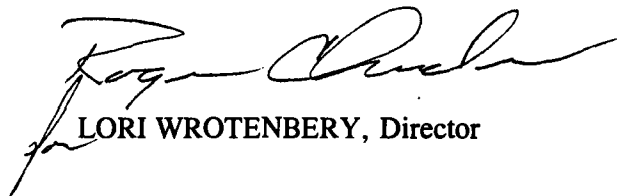
(GW-176) - LG&E Natural Gathering and Processing Co., J.R. Delaney, Operations Manager, 921 W. Sanger, Hobbs, New Mexico, 88240, has submitted a renewal application for the previously approved discharge plan for their Bootleg Compressor Station located in the NW/4 SE/4 Section 18, Township 22 South, Range 33 East, NMPM, Lea County, New Mexico. Approximately 39 barrels per day of produced water, with a total dissolved solids concentration of approximately 10000 mg/l, and condensate will be collected and stored in above ground tanks prior to transport to an OCD approved offsite disposal facility. Groundwater most likely to be affected in the event of an accidental discharge is at a depth of approximately 224 feet with a total dissolved solids concentration of approximately 1973 mg/l. The discharge plan addresses how spills, leaks, and other accidental discharges to the surface will be managed.

Any interested person may obtain further information from the Oil Conservation Division and may submit written comments to the Director of the Oil Conservation Division at the address given above. The discharge plan application may be viewed at the above address between 8:00 a.m. and 4:00 p.m., Monday through Friday. Prior to ruling on any proposed discharge plan or its modification, the Director of the Oil Conservation Division shall allow at least thirty (30) days after the date of publication of this notice during which comments may be submitted to him and a public hearing may be requested by any interested person. Requests for a public hearing shall set forth the reasons why a hearing should be held. A hearing will be held if the Director determines there is significant public interest.

If no public hearing is held, the Director will approve or disapprove the proposed plan based on information available. If a public hearing is held, the director will approve or disapprove the proposed plan based on information in the plan and information submitted at the hearing.

GIVEN under the Seal of New Mexico Oil Conservation Commission at Santa Fe, New Mexico, on this first day of December, 1999.

**STATE OF NEW MEXICO
OIL CONSERVATION DIVISION**


LORI WROTENBERY, Director

SEAL

ACKNOWLEDGEMENT OF RECEIPT
OF CHECK/CASH

I hereby acknowledge receipt of check No. dated 10/18/99,
or cash received on in the amount of \$ 50⁰⁰
from LLANO, INC.
for BOOTLEG COMPRESSOR STATION

Submitted by: WAYNE PRICE Date: 12-1-99
(Facility Name) (DP No.)

Submitted to ASD by: Wayne Price Date: 12-1-99

Received in ASD by: Date:

Filing Fee ☒ New Facility ☐ Renewal ☐

Modification ☐ Other ☐
(specify)

Organization Code 521.07 Applicable FY 2000

To be deposited in the Water Quality Management Fund.

Full Payment ☐ or Annual Increment ☐

LLANO, INC.

BOX 1320
HOBBS, NEW MEXICO 88240

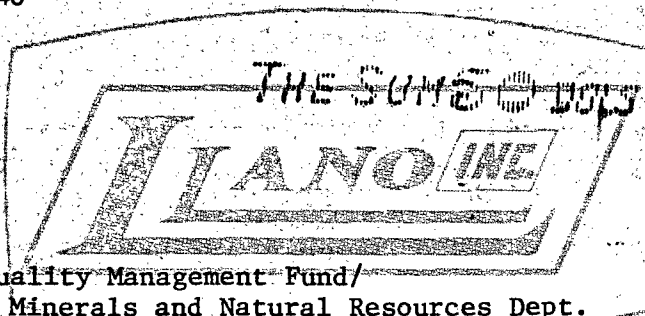
SUNWEST BANK OF HOBBS, N.A.
HOBBS, NEW MEXICO 88240

95-321
1122

CHECK DATE	CHECK NO.
10/18/99	03221

CHECK AMOUNT
\$ 50.00

PAY TO THE ORDER OF



Water Quality Management Fund/
Energy, Minerals and Natural Resources Dept.

LLANO, INC. - GENERAL ACCOUNT

VOID AFTER 90 DAYS

GW-176

LLANO, INC.



INVOICE NO.	INVOICE DATE	DESCRIPTION	GROSS AMOUNT	DISCOUNT	NET AMOUNT
CR 10/19/99	10/19/99	Renewal of Discharge Plan GW-176	\$50.00	0.00	\$50.00
CHECK NUMBER 03221	TOTALS >		\$50.00	0.00	\$50.00

State of New Mexico
Energy, Minerals and Natural Resources Department
OIL CONSERVATION DIVISION
P.O. Box 2088
Santa Fe, NM 87501

OIL CONSERVATION DIVISION
RECEIVED

107 00 27 111 8 52

**DISCHARGE PLAN APPLICATION FOR NATURAL GAS PROCESSING PLANTS,
OIL REFINERIES AND GAS COMPRESSOR STATIONS**

(Refer to OCD Guidelines for assistance in completing the application.)

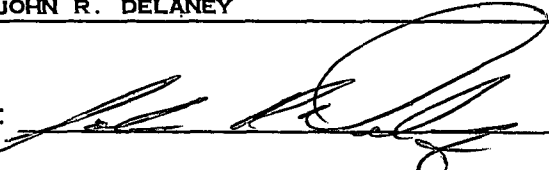
- I. TYPE: COMPRESSOR STATION (SEE ATTACHED)
- II. OPERATOR: LLANO INC.
ADDRESS: 921 W. SANGER, HOBBS, NEW MEXICO 88240
CONTACT PERSON: JOHN R. DELANEY PHONE: 505/393-2153
- III. LOCATION: NW /4 SE /4 Section 128 Township 22 S Range 33 E
Submit large scale topographic map showing exact location.
- IV. Attach the name and address of the landowner(s) of the disposal facility site.
- V. Attach description of the facility with a diagram indicating location of fences, pits, dikes, and tanks on the facility.
- VI. Attach a description of sources, quantities and quality of effluent and waste solids.
- VII. Attach a description of current liquid and solid waste transfer and storage procedures.
- VIII. Attach a description of current liquid and solid waste disposal procedures.
- IX. Attach a routine inspection and maintenance plan to ensure permit compliance.
- X. Attach a contingency plan for reporting and clean-up of spills or releases.
- XI. Attach geological/hydrological evidence demonstrating that disposal of oil field wastes will not adversely impact fresh water. Depth to and quality of ground water must be included.
- XII. A. Attach such other information as is necessary to demonstrate compliance with any other OCD rules, regulations and/or orders.

XIII. CERTIFICATION

I hereby certify that the information submitted with this application is true and correct to the best of my knowledge and belief.

Name: JOHN R. DELANEY

Title: GENERAL MANAGER

Signature: 

Date: 10-21-94

DISTRIBUTION: Original and one copy to Santa Fe with one copy to appropriate Division District Office.

I.

The major purpose of this facility, the "Bootleg Compressor Station," is to compress natural gas.

We are going to be gathering natural gas at a low pressure. In order to put this gas into our normal pipeline system, it is necessary to increase the pressure of the natural gas. To accomplish this goal we will be using gas compressors of 1776 H.P. at site rating.

At this facility we will have a scrubber in front of the compressors. This will remove the free liquids from the stream of natural gas before it is compressed. There will be a dehydrator behind the compressors which will dry the natural gas before it goes into our Transmission system. All liquids which are recovered from this facility will be contained by a 210 Bbl. tank which will be emptied into trucks as often as necessary, and transported to either market, or to a licensed disposal, which ever is applicable.

II.

The Owner/Operator of the facility will be:

LLano Inc. (505) 393-2153
921 W. Sanger
Hobbs, New Mexico 88240

Mr. J. R. Delaney (505) 393-2153
Manager; Operations and Construction
921 W. Sanger
Hobbs, New Mexico 88240

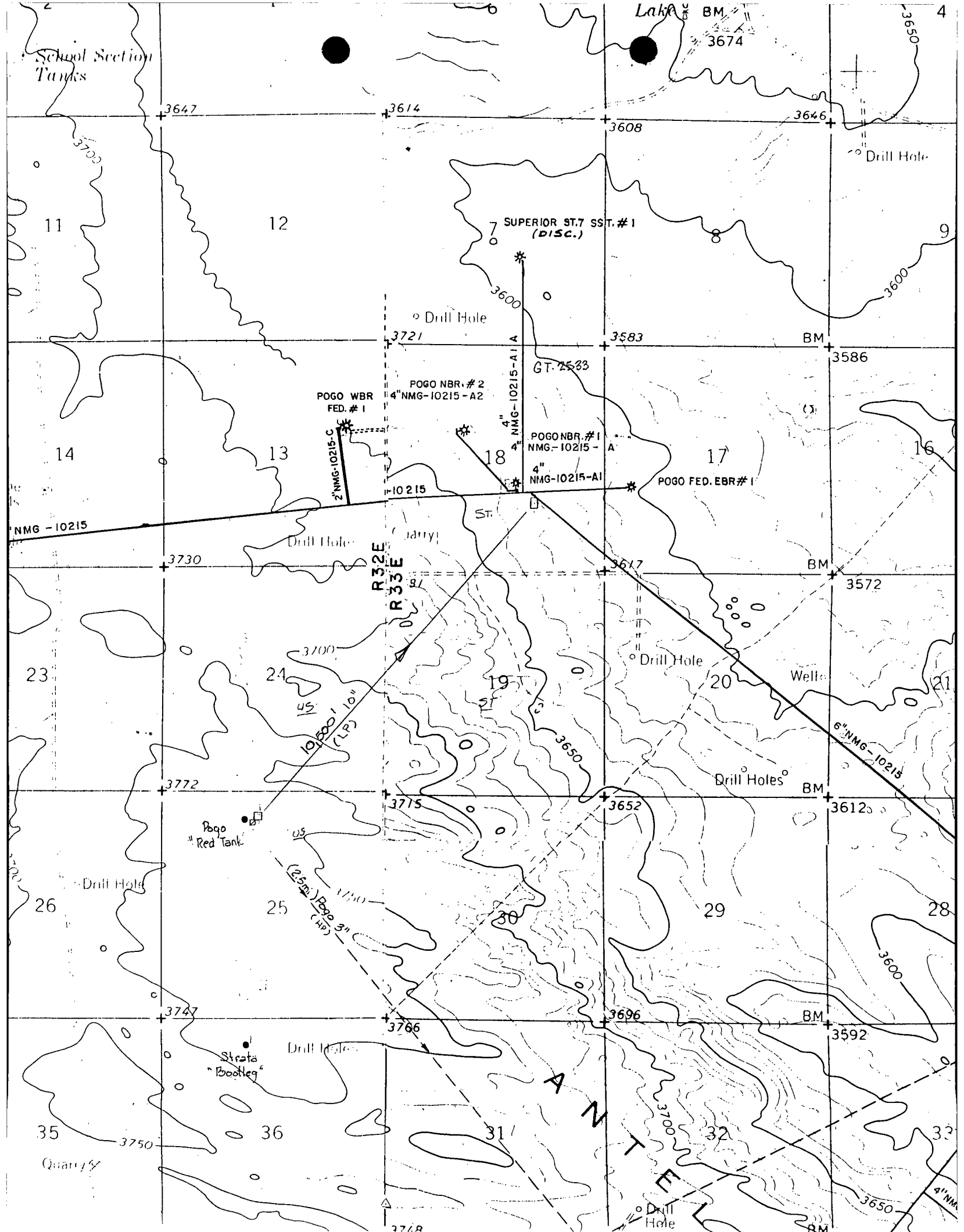
The Compressor units, will belong to the below listed company. They will provide the compressors, full maintenance, and operations on the units.

Dresser Rand Company
7800 West County Road 116
Midland, Texas 79701
1-800-327-6935

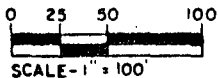
III.

Location: NW/4, of SE/4, Section 28, Township 22 S,
Range 33 E, NMPM, Lea County,
New Mexico:

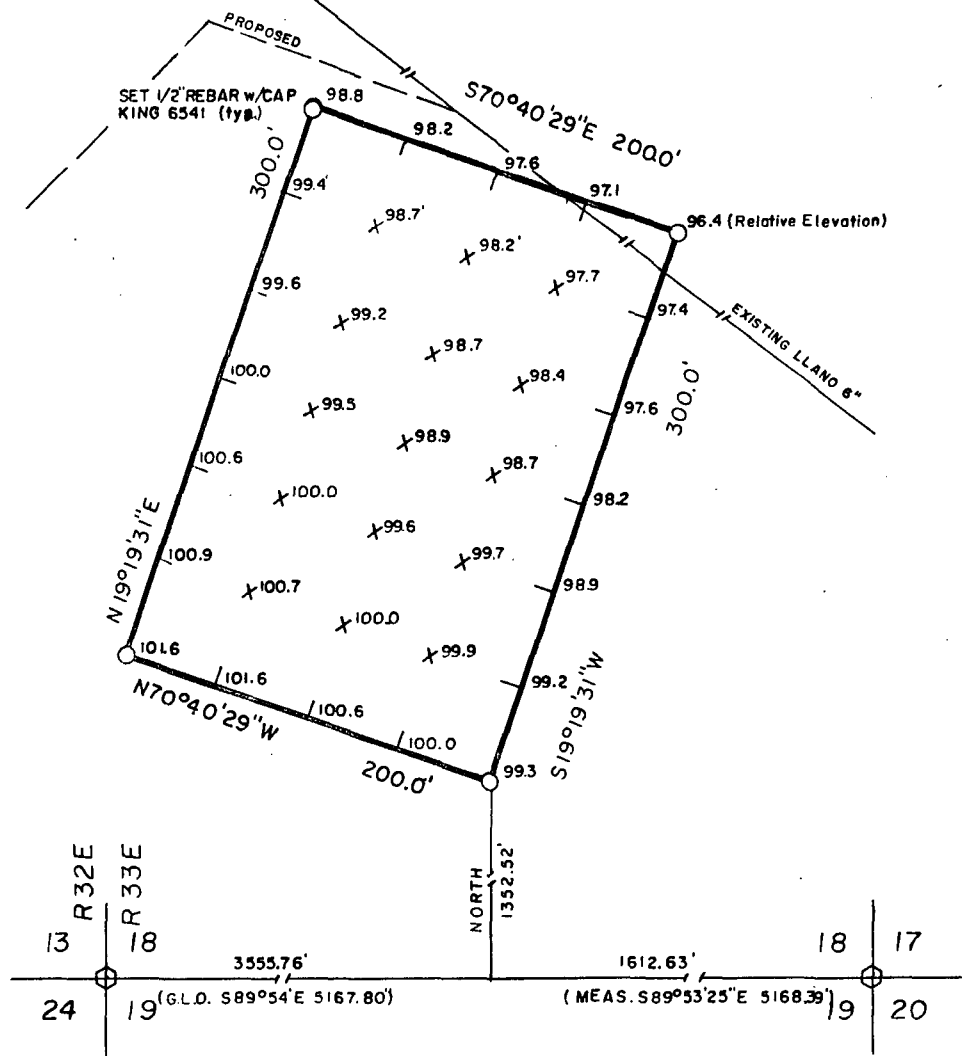
Attached please find a copy of the topographic map
showing the location of the compressor station.



PLAT OF SURVEY



SEC. 18, T22S, R33E, N.M.P.M.,
LEA COUNTY, NEW MEXICO



DESCRIPTION

A 1.377 acre tract of land situated in the Northwest Quarter of the Southeast Quarter (NW $\frac{1}{4}$ SE $\frac{1}{4}$) of Section 18, Township 22 South, Range 33 East, N.M.P.M., Lea County New Mexico, being further described as follows:

Beginning at a point which lies N89° 53' 25"W 1612.63 feet and North 1352.52 feet from the Southeast corner of said Section 18; thence N70° 40' 29"W 200.0 feet; thence N19° 19' 31"E 300.0 feet; thence S70° 40' 29"E 200.0 feet; thence S19° 19' 31"W 300.0 feet to the point of beginning.

I HEREBY CERTIFY THAT I AM THE PROFESSIONAL LAND SURVEYOR WHO PREPARED THE ABOVE PLAT FROM FIELD NOTES OF ACTUAL SURVEYS MADE UNDER MY DIRECTION AND THAT THE SAME ARE TRUE AND CORRECT TO THE BEST OF MY KNOWLEDGE AND BELIEF.

LLANO, INC.

Proposed compressor site in Section 18, Township 22 South, Range 33 East, N.M.P.M., Lea County, New Mexico.

KING SURVEYING

4001 MAHAN DRIVE HOBBS, NEW MEXICO 88240

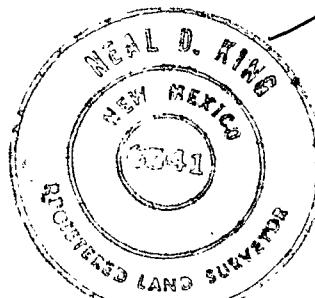
SCALE: 1"=100'

DRAWN BY: GS

DATE: 7/14/94

SHEET 1 OF 1

NEAL D. KING
P.L.S. No. 6541 N.M.
R.P.L.S. No. 2308 TX.



IV.

The land owner of the facility site is:

State of New Mexico
Commissioner of Public Lands
P. O. Box 1148
Santa Fe, New Mexico 87504-1148

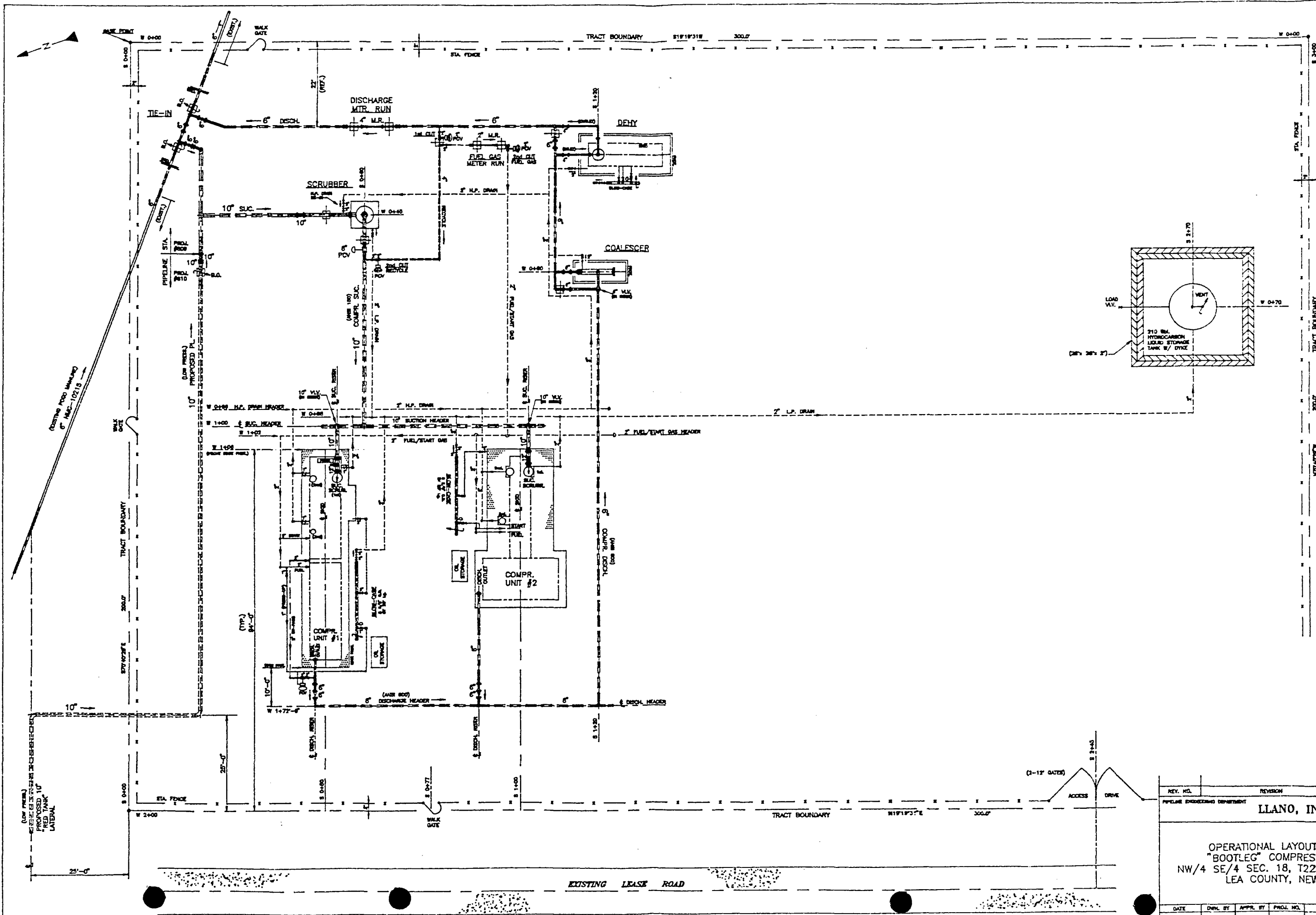
Dep. Comm. Bob Laxingcamp
(505) 827 - 5760

State Business Lease # BL 1353

V. Facility Description

The proposed compressor station will consist of two skid - mounted, engine-driven gas compressors. A skid - mounted dehydration unit, an inlet separator, and a 210 barrel tank. See attached diagram of the facility.

Natural gas will enter the compressor station from the north side of the station through pipelines. The gas will be a commingled stream from various wells in the area. The gas will go through an inlet separator, before going into the compressors. After compression the gas will flow through the dehydration unit. The gas will be dried in the dehydrator before metering and exiting the compressor station.



REV. NO.	REVISION	REV. BY	CHK.		
PIPELINE ENGINEERING DEPARTMENT		HOBBS, NEW MEX.			
LLANO, INC.					
OPERATIONAL LAYOUT AREA PLAN "BOOTLEG" COMPRESSOR STATION NW/4 SE/4 SEC. 18, T22S, R33E, N.M.P.M. LEA COUNTY, NEW MEXICO					
DATE	DWN. BY	APPR. BY	PROJ. NO.	SCALE	DRAWING NO.
8-1-94	RLS	WLS	809	3/250' = 1" = 0'	PRELIM.

VIII.

This is not a disposal site for EFFLUENT Liquid.

As previously stated, the purpose of this site is to compress natural gas. There will be some produced water, and condensate which will be recovered from the natural gas. These liquids will be stored in a 210 Bbl. tank, and will be hauled from location. The produced water will be disposed of by a trucking company, either Rowland Trucking, or AA Oilfield Service. Both of these companies have approved disposal wells which they use, and charge us for the disposal of the produced water.

The condensate will be sold to a refinery. The refinery of choice will be elected by price, and they will pick up the condensate from the storage tank and transport it to their facility.

The used engine lubricants, and engine coolants will be handled by Dresser Rand Corp. The Compressor will be a rental unit, and the owner will preform all maintenance required on this unit. This is inclusive of disposing of any and all used filters etc., which are generated from this compressor.

The storage tank will be monitored by our operators on a daily bases. On an as needed bases the storage tank will be hauled as described above. With daily monitoring of the tank by our operators every day of the year we expect no problems with excessive liquids on location.

Simply stated, we will make every reasonable effort to see that the liquid is contained in the tank, then it cannot contaminate the ground, or ground water.

IX.

This facility will have an operator which will check the operations of the facility on daily bases. The operator will report the functioning of the compressor, and a log will be kept of the units. If the operator should locate any problem in any of the equipment, what-so-ever, he will report the problem to his supervisor. Each operator is equipped with mobile communications, which is monitored 24 hours a day.

In the event of a "reportable spill", the operator would notify his supervisor immediately of the occurrence. The supervisor would in turn notify his immediate supervisor, and our emergency report and operating plan would be implemented.

Fluids will be collected inside pressure vessels. These vessels will be ASME stamped, approved, pressure vessels. Therefore, no precipitation can be collected in them, or commingled with produced fluids.

The compressor units will have an "environmental" skid, which will not allow precipitation which has contacted this unit to runoff onto the ground. The unit skid will be piped into a "sump tank" which will transfer all fluids to a 210 Bbl. above ground storage tank. As previously stated the contents of this tank will be hauled by truck as often as necessary to assure proper levels are maintained.

VI. Sources, Quantities, & Quality of Effluent & Waste Solids

- 1) ENGINE COOLING WATER - The engines driving the compressors contain approximately 330 gallons of a 50% antifreeze, 50% water mixture for cooling purposes. This is a closed loop system and normally requires no make-up.
- 2) SEPARATORS - The inlet separator, filter separator, and scrubbers (located on the compressor skid and dehydration unit) remove an estimated 0 to 13 BBL/day of water and an estimated 0 to 36 BBL/day of hydrocarbon liquids depending upon ambient conditions.
- 3) WASTE LUBRICATION OILS - The compressors contains approximately 85 gallons of lubricating oil and the engine contains approximately 150 gallons of lubrication oil each. The lubrication oil is a standard 30 or 40 weight oil and replaced approximately every 5000 hours of run time, or as required by oil analysis.
- 4) DEHYDRATION UNIT - The dehydration unit contains approximately 200 gallons of triethylene glycol which is continually circulated in order to dry the gas. The water vapor is vented to the atmosphere and contains no BTEX.

The waste water and hydrocarbon liquids will be commingled within the facility. Individual rates, volumes and concentrations should not vary beyond the ranges identified above. All process units will be self-contained to prevent intentional or inadvertent discharges and spills.

VII. TRANSFER & STORAGE OF PROCESS FLUIDS & EFFLUENTS

Low pressure waste water and hydrocarbon liquids are collected in the inlet separator, the first and second stage compressor scrubbers. The low pressure produced water and hydrocarbon liquids are commingled and piped to a closed storage tank. See attached facility flow schematic.

High pressure produced water and liquid hydrocarbons are collected in the third stage compressor scrubbers, and the dehydration unit scrubber. The high pressure commingled liquids are then piped back to the inlet separator.

The inlet separator, compressor scrubbers, and dehydration unit are each pressurized. The closed storage tank will be an API tank with a top.

The closed storage tank is a standard API 210 Barrel tank. The tank will be constructed on a gravel pad above ground level with an earthen dike enclosure to provide secondary containment equal to one-third greater than the tank capacity.

Waste lubrication oil will be piped to an above ground tank set forth just for waste (slop) oil. The tank will be a horizontal skid mounted tank with a metal spill tray placed under it. The foundation drains will be piped to a sump tank with concrete secondary containment, and visual leak detection. The sump tank will have a "Float" switch installed in it and an automatic pneumatic pump installed which will transfer rain water caught from the foundation drains to the closed tank. This system will keep the sump tank at proper levels during the infrequent rains of this climate.

X.

Our contingency plan for cleaning up spills, and reporting same is not complicated. We have a supervisor on call who is available on 24 hours a day. There are administrative support supervisors available when ever needed.

If a spill should occur, the supervisor on duty would start the field operations of the clean-up, by first stopping the source of the spill, and containing all fluids that he possibly can. The on duty supervisor would notify the support people of the situation. The OCD would be notified pursuant to rule 116, and a contractor would be dispatched at that time to start clean up. The land owner would be notified, and all measures would be taken to protect his live-stock, as well as any wild animals.

All clean up would be carried out in an approved manner, and all necessary waste would be dealt with accordingly.

XI. SITE CHARACTERISTICS

A. There are no water wells with in one mile of the location of this compressor station. Therefore, no water sample of current ground water could be collected. In turn, we could preform no water quality testing.

This is not a disposal site. So we would not adversely effect any water, ground, or other environmental state with the disposal of waste.

(ALSO SEE SECTION 5)

ACKNOWLEDGEMENT OF RECEIPT
OF CHECK/CASH

I hereby acknowledge receipt of check No. [REDACTED] dated 10-28-94,

or cash received on _____ in the amount of \$ 690⁰⁰

from LLANO, INC

for (GW-176) BOOTLEG COMPRESSOR STATION
(Facility Name) (DP No.)

Submitted by: _____ Date: _____

Submitted to ASD by: Chris Eustice Date: 2-15-95

Received in ASD by: Carlos F. Sabido Date: 2/15/95

Filing Fee _____ New Facility ☒ Renewal _____

Modification _____ Other _____
(specify)

Organization Code 521.07 Applicable FY 95

To be deposited in the Water Quality Management Fund.

Full Payment ☒ or Annual Increment _____

OPERATING ACCOUNT
P.O. BOX 569550
DALLAS, TX 75356-9550

Llano, Inc.

DATE	CHECK NUMBER
10/28/94	[REDACTED]

0266

SIX-HUNDRED-NINETY-DOLLARS-ZERO-CENTS *****

PAY TO THE ORDER OF

CHECK AMOUNT
*****\$690.00*

WATER QUALITY MANAGEMENT FUND
STATE OF NEW MEXICO
PO BOX 2088

LLANO, INC.
OPERATING ACCOUNT

[Signature]

Pay through
Mellon Bank (DE) N.A., Wilmington, DE 19899
Mellon Bank (East) N.A., Philadelphia, PA 19102
62-4/311

8 SEP 1995



STATE OF NEW MEXICO
ENERGY, MINERALS AND NATURAL RESOURCES DEPARTMENT
OIL CONSERVATION DIVISION



BRUCE KING
GOVERNOR

ANITA LOCKWOOD
CABINET SECRETARY

POST OFFICE BOX 2088
STATE LAND OFFICE BUILDING
SANTA FE, NEW MEXICO 87504
(505) 827-5800

December 5, 1994

ALBUQUERQUE JOURNAL
717 Silver Southwest
Albuquerque, New Mexico 87102

RE: NOTICE OF PUBLICATION

ATTN: ADVERTISING MANAGER

Dear Sir/Madam:

Please publish the attached notice one time immediately on receipt of this request. Please proofread carefully, as any error in a land description or in a key word or phrase can invalidate the entire notice.

Immediately upon completion of publication, please send the following to this office:

- 1. Publisher's affidavit in duplicate.*
- 2. Statement of cost (also in duplicate.)*
- 3. CERTIFIED invoices for prompt payment.*

We should have these immediately after publication in order that the legal notice will be available for the hearing which it advertises, and also so that there will be no delay in your receiving payment.

Please publish the notice no later than December 12, 1994.

Sincerely,

Sally Martinez
Sally E. Martinez
Administrative Secretary

Attachment

PS Form 3800, March 1993

Sent to	Ally Palmer	
Street and No.		
P.O., State and ZIP Code		
Postage	\$	
Certified Fee		
Special Delivery Fee		
Restricted Delivery Fee		
Return Receipt Showing to Whom & Date Delivered		
Return Receipt Showing to Whom, Date, and Addressee's Address		
TOTAL Postage & Fees	\$	
Postmark or Date		

Receipt for
Certified Mail
No Insurance Coverage Provided
Do not use for International Mail
(See Reverse)

Z 765 963 540



STATE OF NEW MEXICO

ENERGY, MINERALS AND NATURAL RESOURCES DEPARTMENT

OIL CONSERVATION DIVISION



BRUCE KING
GOVERNOR

ANITA LOCKWOOD
CABINET SECRETARY

POST OFFICE BOX 2088
STATE LAND OFFICE BUILDING
SANTA FE, NEW MEXICO 87504
(505) 827-5800

December 5, 1994

LOVINGTON DAILY LEADER
P. O. Box 1717
Lovington, New Mexico 88260

RE: NOTICE OF PUBLICATION

ATTN: ADVERTISING MANAGER

Dear Sir/Madam:

Please publish the attached notice one time immediately on receipt of this request. Please proofread carefully, as any error in a land description or in a key word or phrase can invalidate the entire notice.

Immediately upon completion of publication, please send the following to this office:

1. **Publisher's affidavit in duplicate.**
2. **Statement of cost (also in duplicate.)**
3. **CERTIFIED invoices for prompt payment.**

We should have these immediately after publication in order that the legal notice will be available for the hearing which it advertises, and also so that there will be no delay in your receiving payment.

Please publish the notice no later than December 12, 1994.

Sincerely,

Sally Martinez
Sally E. Martinez
Administrative Secretary

Attachment

PS Form 3800, March 1993

Sent to	Lovington Daily Leader
Street and No.	P.O. Box 1717
P.O. State	Lovington, NM 88260
Postage	
Certified Fee	
Special Delivery Fee	
Restricted Delivery Fee	
Return Receipt Showing to Whom & Date Delivered	
Return Receipt Showing to Whom, Date, and Addressee's Address	
TOTAL Postage & Fees	\$
Postmark or Date	

Receipt for
Certified Mail
No Insurance Coverage Provided
Do not use for International Mail
(See Reverse)

Z 765 963 539

NOTICE OF PUBLICATION

STATE OF NEW MEXICO ENERGY, MINERALS AND NATURAL RESOURCES DEPARTMENT OIL CONSERVATION DIVISION

Notice is hereby given that pursuant to the New Mexico Water Quality Control Commission Regulations, the following discharge plan application has been submitted to the Director of the Oil Conservation Division, 2040 South Pacheco, Santa Fe, New Mexico 87505, Telephone (505) 827-7131:

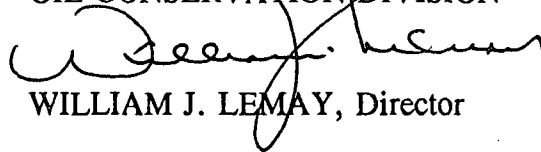
(GW-176) - Llano Inc., J.R. Delaney, Operations Manager, 921 W. Sanger, Hobbs, New Mexico, 88240, has submitted a discharge plan application for their Bootleg Compressor Station located in the NW/4 SE/4 Section 18, Township 22 South, Range 33 East, NMPM, Lea County, New Mexico. Approximately 39 barrells per day of produced water, with a total dissolved solids concentration of approximately 10000 mg/l, and condensate will be collected and stored in an above ground closed top steel tank prior to transport to an OCD approved offsite disposal facility. Groundwater most likely to be affected in the event of an accidental discharge is at a depth of approximately 224 feet with a total dissolved solids concentration of approximately 1973 mg/l. The discharge plan addresses how spills, leaks, and other accidental discharges to the surface will be managed.

Any interested person may obtain further information from the Oil Conservation Division and may submit written comments to the Director of the Oil Conservation Division at the address given above. The discharge plan application may be viewed at the above address between 8:00 a.m. and 4:00 p.m., Monday thru Friday. Prior to ruling on any proposed discharge plan or its modification, the Director of the Oil Conservation Division shall allow at least thirty (30) days after the date of publication of this notice during which comments may be submitted to him and public hearing may be requested by any interested person. Request for public hearing shall set forth the reasons why a hearing shall be held. A hearing will be held if the director determines that there is significant public interest.

If no hearing is held, the Director will approve or disapprove the plan based on the information available. If a public hearing is held, the Director will approve the plan based on the information in the plan and information presented at the hearing.

GIVEN under the Seal of New Mexico Oil Conservation Commission at Santa Fe, New Mexico, on this 1st day of December, 1994.

STATE OF NEW MEXICO
OIL CONSERVATION DIVISION


WILLIAM J. LEMAY, Director

SEAL

NOTICE OF PUBLICATION
STATE OF NEW MEXICO
ENERGY, MINERALS AND
NATURAL RESOURCES
DEPARTMENT

OIL CONSERVATION DIVISION

Notice is hereby given that pursuant to the New Mexico Water Quality Control Commission Regulations, the following discharge plan application has been submitted to the Director of the Oil Conservation Division, 2040 South Pacheco, Santa Fe, New Mexico 87505, Telephone (505) 827-7131:

(GW-176) Llano Inc. J.R. Delaney, Operations Manager, 921 W. Grieger, Hobbs, New Mexico, 88240, has submitted a discharge plan application for their Bootleg Compressor Station located in the NW/4 SE/4 Section 18,

Township 22 South, Range 33 East, NMPLA, Lea County, New Mexico. Approximately 39 barrels per day of produced water, with a total dissolved solids concentration of approximately 10,000 mg/l, and condensate will be collected and stored in an above ground closed top steel tank prior to transport to an OCD approved on-site disposal facility. Groundwater most likely to be affected in the event of an accidental discharge is at a depth of approximately 224 feet with a total dissolved solids concentration of approximately 1073 mg/l. The discharge plan addresses how spills, leaks, and other accidental discharges to the surface will be managed.

Any interested person may obtain further information from the Oil Conservation Division and may submit written comments to the Director of the Oil Conservation Division at the address given above. The discharge plan application may be viewed at the above address between 8:00 a.m. and 4:00 p.m., Monday thru Friday. Prior to any ruling on any proposed discharge plan or its modification, the Director of the Oil Conservation Division shall allow at least thirty (30) days after the date of publication of this notice during which comments may be submitted to him and public hearing may be requested by any interested person. Request for public hearing shall set forth the reasons why a hearing shall be held. A hearing will be held if the director determines that there is significant public interest.

If no hearing is held, the Director will approve or disapprove the plan based on the information available. If a public hearing is held, the Director will approve the plan based on the information in the plan and information presented at the hearing.

GIVEN under the Seal of New Mexico Oil Conservation Commission at Santa Fe, New Mexico, on this 1st day of December, 1994.

STATE OF NEW MEXICO
OIL CONSERVATION DIVISION
s/WILLIAM J. LEMAY
Director

Journal: December 12, 1994.

STATE OF NEW MEXICO
County of Bernalillo

ss

RESERVATION DIVISION
RECEIVED

'95 JAN 13 AM 8 52

Bill Tafoya being duly sworn declares and says that he is Classified Advertising Manager of The Albuquerque Journal, and that this newspaper is duly qualified to publish legal notices or advertisements within the meaning of Section 3, Chapter 167, Session Laws of 1937, and that payment therefore has been made or assessed as court costs; that the notice, copy of which is hereto attached, was published in said paper in the regular daily edition, for none times, the first publication being on the 12th day of Dec, 1994 and the subsequent consecutive publications on none, 1994

Sworn and subscribed to before me, a notary Public in and for the County of Bernalillo and State of New Mexico, this 12th day of Dec 1994.

PRICE \$32.76

Statement to come at end of month.



NOTARY PUBLIC
STATE OF NEW MEXICO

My Commission Expires

3/20/98

CLA-22-A (R-1/93) ACCOUNT NUMBER C80932



**UNITED STATES DEPARTMENT OF THE INTERIOR
FISH AND WILDLIFE SERVICE**

NEW MEXICO ECOLOGICAL SERVICES STATE OFFICE

2105 OSUNA NE

ALBUQUERQUE, NEW MEXICO 87113

Telephone: (505) 761-4525

Fax Number: (505) 761-4542

OIL CONSERVATION DIVISION
RECEIVED
94 DEC 20 AM 8 52

December 19, 1994

William J. Lemay, Director
Oil Conservation Division
State Land Office Building
P.O. Box 2088
Santa Fe, New Mexico 87504-2088

Dear Mr. Lemay:

This responds to your agency's public notice dated December 1, 1994, regarding the State of New Mexico's proposal to approve the discharge plan for the applicant listed below.

(GW-176) - Llano Inc. The operations manager has submitted a discharge plan for their Bootleg Compressor Station located in the NW/4 SE/4 of Section 18, Township 22 South, Range 33 East, Lea County, New Mexico. Approximately 39 barrels per day of produced water will be collected and stored in an above ground, closed top, steel tank prior to disposal in an OCD-approved disposal facility.

It is our understanding that all waste water produced by the applicant will be contained within a pipe, a closed tank, or transport vehicle. No produced water will be discharged into a surface impoundment or open-topped tank where it could become available to wildlife, except in case of accidental breach of a pipe or storage tank. Therefore, the U.S. Fish and Wildlife Service has no objection to the Oil Conservation Division granting approval for the discharge plan application outlined above.

Thank you for the opportunity to review and comment on this discharge plan application. If you have any questions, please contact Joel D. Lusk at (505) 761-4525.

Sincerely,

Jennifer Fowler-Propst
State Supervisor

cc: Director, New Mexico Department of Game and Fish, Santa Fe, New Mexico

Affidavit of Publication

STATE OF NEW MEXICO)

) ss.

COUNTY OF LEA)

Joyce Clemens being first duly sworn on oath
deposes and says that he is **Adv. Director** of
THE LOVINGTON DAILY LEADER, a daily newspaper
of general paid circulation published in the English
language at Lovington, Lea County, New Mexico; that
said newspaper has been so published in such county
continuously and uninterruptedly for a period in excess
of Twenty-six (26) consecutive weeks next prior to the
first publication of the notice hereto attached as here-
inafter shown; and that said newspaper is in all things
duly qualified to publish legal notices within the mean-
ing of Chapter 167 of the 1937 Session Laws of the
State of New Mexico.

That the notice which is hereto attached, entitled
Notice Of Publication

XXXXXXXXXXXX and XXXXXXXX

XXXXXXXXXXXX Court of Lea

XXXXXXXXXXXX County, New Mexico, was published in a regular and
entire issue of THE LOVINGTON DAILY LEADER and
not in any supplement thereof, XXXXXXXX

XXXXXXXXXXXX same day of the week, for **one (1) day**

XXXXXXXXXXXX consecutive weeks, beginning with the issue of

December 9 94

and ending with the issue of

December 9 94

And that the cost of publishing said notice is the
38.88
sum of \$.....

which sum has been (Paid) (Assessed) as Court Costs

Joyce Clemens
Subscribed and sworn to before me this **22nd**

day of **December 19 94**

John Senior
Notary Public, Lea County, New Mexico

My Commission Expires **Sept. 28 98**

LEGAL NOTICE NOTICE OF PUBLICATION STATE OF NEW MEXICO ENERGY, MINERALS AND NATURAL RESOURCES DEPARTMENT OIL CONSERVATION DIVISION

Notice is hereby given that pursuant to the New Mexico
Water Quality Control Commission Regulations, the follow-
ing discharge plan application has been submitted to the
Director of the Oil Conservation Division, 2040 South Pacheco,
Santa Fe, New Mexico 87505, Telephone (505)827-7131:
(GW-176)-Llano Inc., J.R. Delaney, Operations Manager,
921 W. Sanger, Hobbs, New Mexico, 88240, has submit-
ted a discharge plan application for their Bootleg Com-
pressor Station located in the NW/4 SE/4 Section 18,
Township 22 South, Range 33 East, NMPM, Lea County,
New Mexico. Approximately 39 barrels per day of pro-
duced water, with a total dissolved solids concentration
of approximately 10000 mg/l, and condensate will be
collected and stored in an above ground closed top steel
tank prior to transport to an OCD approved offsite
disposal facility. Groundwater most likely to be affected
in the event of an accidental discharge is at a depth of
approximately 224 feet with a total dissolved solids
concentration of approximately 1973 mg/l. The dis-
charge plan addresses how spills, leaks, and other
accidental discharges to the surface will be managed.
Any interested person may obtain further information from
the Oil Conservation Division and may submit written com-
ments to the Director of the Oil Conservation Division at the
address given above. The discharge plan application may be
viewed at the above address between 8:00 a.m. and 4:00
p.m., Monday thru Friday. Prior to ruling on any proposed
discharge plan or its modification, the Director of the Oil
Conservation Division shall allow at least thirty (30) days
after the date of publication of this notice during which
comments may be submitted to him and public hearing may
be requested by any interested person. Request for public
hearing shall set forth the reasons why a hearing shall be
held. A hearing will be held if the director determines that
there is significant public interest.

If no hearing is held, the Director will approve or disapprove
the plan based on the information available. If a public hearing
is held, the Director will approve the plan based on the
information in the plan and information presented at the
hearing.

GIVEN under the Seal of New Mexico Oil Conservation
Commission at Santa Fe, New Mexico, on this 1st day of
December, 1994.

STATE OF NEW MEXICO
OIL CONSERVATION DIVISION
WILLIAM J. LEMAY, Director

SEAL

Published in the Lovington Daily Leader December 9, 1994.

NOTICE OF PUBLICATION

STATE OF NEW MEXICO ENERGY, MINERALS AND NATURAL RESOURCES DEPARTMENT OIL CONSERVATION DIVISION

Notice is hereby given that pursuant to the New Mexico Water Quality Control Commission Regulations, the following discharge plan application has been submitted to the Director of the Oil Conservation Division, 2040 South Pacheco, Santa Fe, New Mexico 87505, Telephone (505) 827-7131:

(GW-176) - Llano Inc., J.R. Delaney, Operations Manager, 921 W. Sanger, Hobbs, New Mexico, 88240, has submitted a discharge plan application for their Bootleg Compressor Station located in the NW/4 SE/4 Section 18, Township 22 South, Range 33 East, NMPM, Lea County, New Mexico. Approximately 39 barrells per day of produced water, with a total dissolved solids concentration of approximately 10000 mg/l, and condensate will be collected and stored in an above ground closed top steel tank prior to transport to an OCD approved offsite disposal facility. Groundwater most likely to be affected in the event of an accidental discharge is at a depth of approximately 224 feet with a total dissolved solids concentration of approximately 1973 mg/l. The discharge plan addresses how spills, leaks, and other accidental discharges to the surface will be managed.

Any interested person may obtain further information from the Oil Conservation Division and may submit written comments to the Director of the Oil Conservation Division at the address given above. The discharge plan application may be viewed at the above address between 8:00 a.m. and 4:00 p.m., Monday thru Friday. Prior to ruling on any proposed discharge plan or its modification, the Director of the Oil Conservation Division shall allow at least thirty (30) days after the date of publication of this notice during which comments may be submitted to him and public hearing may be requested by any interested person. Request for public hearing shall set forth the reasons why a hearing shall be held. A hearing will be held if the director determines that there is significant public interest.

If no hearing is held, the Director will approve or disapprove the plan based on the information available. If a public hearing is held, the Director will approve the plan based on the information in the plan and information presented at the hearing.

GIVEN under the Seal of New Mexico Oil Conservation Commission at Santa Fe, New Mexico, on this 1st day of December, 1994.

SEAL

STATE OF NEW MEXICO
OIL CONSERVATION DIVISION


WILLIAM J. LEMAY, Director

Memo

From
CHRIS E. EUSTICE
Geologist

To SEC 28 - T22S - R33E

Water Quality

Conductivity 2630 μ
TDS 1973 ppm

Depth to GW

224'

Above info based upon
WQ data on file w/ OCD-EB

ACKNOWLEDGEMENT OF RECEIPT
OF CHECK/CASH

I hereby acknowledge receipt of check No. [REDACTED] dated 10/21/94,
or cash received on _____ in the amount of \$ 50.00
from LLANO, INC.

for (GW-176) BOOTLEG COMPRESSOR STATION
(Facility Name)

Submitted by: _____ Date: _____ (DP No.)

Submitted to ASD by: CHRIS EUSTICE Date: 11-2-94

Received in ASD by: [Signature] Date: _____

Filing Fee ☒ New Facility _____ Renewal _____

Modification _____ Other _____
(specify)

Organization Code 521.07 Applicable FY 95

To be deposited in the Water Quality Management Fund.

Full Payment _____ or Annual Increment _____

LLANO, INC.

BOX 1320
HOBBS, NEW MEXICO 88240

SUNWEST BANK OF HOBBS, N.A.
HOBBS, NEW MEXICO 88240



95-32
1122

CHECK DATE

10/21/94

CHECK

THE SUM OF FIFTY DOLLARS AND NO CENTS

PAY TO THE ORDER OF

Water Quality Management Fund
Energy, Minerals, and Natural Resources Department
Oil Conservation Division
P.O. Box 2088, Santa Fe, NM 87501

CHECK AMOUNT

\$50.00

LLANO, INC. - GENERAL ACCOUNT

VOID AFTER 90 DAYS

LLANO, INC.

INVOICE NO.	INVOICE DATE	DESCRIPTION	GROSS AMOUNT	DISCOUNT	NET AMOUNT
Check Req.	10/21/94	Water Quality Management Fund	\$50.00	N/A	\$50.00
		Filing fee for Bootleg Compressor Station Discharge Plan.	GW-176		
		Lano 18350 L809			
CHECK NUMBER		TOTALS ➤	\$50.00	N/A	\$50.00