

GW - 316

**GENERAL
CORRESPONDENCE**

YEAR(S):

1999 - 2007

THE SANTA FE
NEW MEXICAN RECEIVED
Founded 1849

APR 30 2007

Oil Conservation Division
1220 S. St. Francis Drive
Santa Fe, NM 87505

NM EMNRD OIL CONSERV
ATTN: Carl Chavez
1220 S ST FRANCIS DR
SANTA FE NM 87505

ALTERNATE ACCOUNT: 56689
AD NUMBER: 00211726 ACCOUNT: 00002212
LEGAL NO: 80841 P.O. #: 52100-3956
859 LINES 1 TIME(S) 481.04
AFFIDAVIT: 6.00
TAX: 37.14
TOTAL: 524.18

AFFIDAVIT OF PUBLICATION

STATE OF NEW MEXICO
COUNTY OF SANTA FE

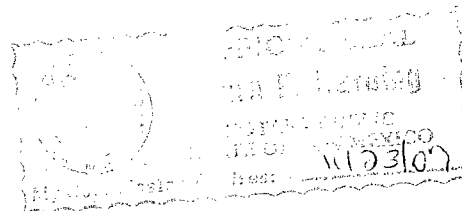
I, R. Lara, being first duly sworn declare and say that I am Legal Advertising Representative of THE SANTA FE NEW MEXICAN, a daily newspaper published in the English language, and having a general circulation in the Counties of Santa Fe and Los Alamos, State of New Mexico and being a newspaper duly qualified to publish legal notices and advertisements under the provisions of Chapter 167 on Session Laws of 1937; that the publication # 80841 a copy of which is hereto attached was published in said newspaper 1 day(s) between 04/26/2007 and 04/26/2007 and that the notice was published in the newspaper proper and not in any supplement; the first date of publication being on the 26th day of April, 2007 and that the undersigned has personal knowledge of the matter and things set forth in this affidavit.

/s/ *R. Lara*
LEGAL ADVERTISEMENT REPRESENTATIVE

Subscribed and sworn to before me on this 26th day of April, 2007

Notary *Laura A. Hardy*

Commission Expires: 11/23/07



south on CR-1 from SR-128. Approximately 30 barrels per day of wastewater is stored in above ground tanks prior to being transported off-site to OCD approved facilities. Groundwater most likely to be affected by a spill, leak or accidental discharge is at a depth of approximately 400 feet below the ground surface, with a total dissolved solids concentration from 1,000 to 1,700 mg/L. The discharge plan addresses how oilfield products and wastes will be properly handled, stored, and disposed of, including how spills, leaks, and other accidental discharges to the surface will be managed in order to protect fresh water.

(GW-316) DCP Midstream LP. Elisabeth Klein, Principal Environmental Specialist, 370 17th Street, Suite 2500 Denver, Colorado 80202, has submitted a renewal application for the previously approved discharge plan for their Paige Hat Mesa Compressor Station located in the SW/4, NE/4 of Section 11, Township 21 South, Range 32 East, NMPM, Lea County, New Mexico. The compressor station is located approximately 1.75 miles south of the SR-176 and US-180 intersection. Approximately 6 barrels per day of wastewater is stored in above ground tanks prior to being transported off-site to OCD approved facilities. Groundwater most likely to be affected by a spill, leak or accidental discharge is at a depth of approximately 175 feet below the ground surface, with a total dissolved solids concentration of 1,000 mg/L. The discharge plan addresses how oilfield products and wastes will be properly handled, stored, and disposed of, including how spills, leaks, and other accidental discharges to the surface will be managed in order to protect fresh water.

The NMOCDC has determined that the application is administratively complete and has prepared a draft permit. The NMOCDC will accept comments and statements of interest regarding this application and will create a facility-specific mailing list for persons who wish to receive future notices. Persons interested in obtaining further information, submitting comments or requesting to be on a facility-specific mailing list for future notices may contact the Environmental Bureau Chief of the Oil Conservation Division at the address given above. The administrative completeness determination and draft permit may be viewed at the above address between 8:00 a.m. and 4:00 p.m., Monday through Friday, or may also be viewed at the NMOCDC web site <http://www.emnrd.state.nm.us/ocd/>. Persons interested in obtaining a copy of the application and draft permit may contact the NMOCDC at the address given above. Prior to ruling on any proposed discharge permit or major modification, the Director shall allow a period of at least thirty (30) days after the date of publication of this notice, during which interested persons may submit comments or request that NMOCDC hold a public hearing. Requests for a public hearing shall set forth the reasons why a hearing should be held. A hearing will be held if the Director determines that there is significant public interest.

If no public hearing is held, the Director will approve or disapprove the proposed permit based on information available, including all comments received. If a public hearing is held, the director will approve or disapprove the proposed permit based on information

in the permit application and information submitted at the hearing.

Para obtener más información sobre esta solicitud en español, sirvase comunicarse por favor: New Mexico Energy, Minerals and Natural Resources Department (Depto. Del Energia, Minerals y Recursos Naturales de Nuevo México), Oil Conservation Division (Depto. Conservación Del Petróleo), 1220 South St. Francis Drive, Santa Fe, New Mexico (Contacto: Dorothy Phillips, 505-476-3461)

GIVEN under the Seal of New Mexico Oil Conservation Commission at Santa Fe, New Mexico, on this 20th day of April 2007.

STATE OF
NEW MEXICO
OIL CONSERVATION
DIVISION

SEAL

Mark Fesmire,
Director

Legal #80841

Pub. Apr. 26, 2007

**NOTICE OF
PUBLICATION**

**STATE OF
NEW MEXICO
ENERGY, MINERALS
AND NATURAL
RESOURCES
DEPARTMENT
OIL CONSERVATION
DIVISION**

Notice is hereby given that pursuant to New Mexico Water Quality Control Commission Regulations (20.6.2.3106 NMAC), the following discharge permit application(s) has been submitted to the Director of the New Mexico Oil Conservation Division ("NMOCD"), 1220 S. Saint Francis Drive, Santa Fe, New Mexico 87505, Telephone (505) 476-3440:

(GW-162) DCP Midstream LP. Elisabeth Klein, Principal Environmental Specialist, 370 17th Street, Suite 2500 Denver, Colorado 80202, has submitted a renewal application for the previously approved discharge plan for their Antelope Ridge Gas Plant located in the SW/4, SE/4 of Section 15, Township 23 South, Range 34 East, NMPM, Lea County, New Mexico. The plant is located approximately 21.6 miles west on CR-21 from SR-207 to a "lease road" and then south about 2 miles. Natural gas products, waste oil and water are stored in above ground tanks prior to being transported off-site to OCD approved facilities. Groundwater most likely to be affected by a spill, leak or accidental discharge is at a depth of approximately 400 feet below the ground surface, with a total dissolved solids concentration of 55 mg/L. The discharge plan addresses how oilfield products and wastes will be properly handled, stored, and disposed of, including how spills, leaks, and other accidental discharges to the surface will be managed in order to protect fresh water.

(GW-167) DCP Midstream LP. Elisabeth Klein, Principal Environmental Specialist, 370 17th Street, Suite 2500 Denver, Colorado 80202, has submitted a renewal application for the previously approved discharge plan for their P & P Malaga Compressor Station located in the SW/4, NE/4 of Section 3, Township 24 South, Range 28 East, NMPM, Eddy County, New Mexico. The compressor station is located approximately 500 yards northeast on CR-738 from Onsurez Road to an access road. Approximately 12 barrels per day of wastewater will be stored in above ground tanks prior to being transported off-site to OCD approved facilities. Groundwater most likely to be affected by a spill, leak or accidental discharge is at a depth of approximately 30 feet below the ground surface, with a total dissolved solids concentration of 300 mg/L. The discharge plan addresses how oilfield products and wastes will be properly handled, stored, and disposed of, including how spills, leaks, and other accidental discharges to the surface will be managed in order to protect fresh water.

(GW-176) DCP Midstream LP. Elisabeth Klein, Principal Environmental Specialist, 370 17th Street, Suite 2500 Denver, Colorado 80202, has submitted a renewal application for the previously approved discharge plan for their Bootleg Compressor Station located in the NW/4, SE/4 of Section 28, Township 22 South, Range 33 East, NMPM, Lea County, New Mexico. The compressor station is located approximately 6.4 miles southeast on SR-176 from US-180 to an access road and 9.4 miles due south. Approximately 39 barrels per day of wastewater will be stored in above ground tanks prior to being transported off-site to OCD approved facilities. Groundwater most likely to be affected by a spill, leak or accidental discharge is at a depth of approximately 244 feet below the ground surface, with a total dissolved solids concentration of 1,973 mg/L. The discharge plan addresses how

oilfield products and wastes will be properly handled, stored, and disposed of, including how spills, leaks, and other accidental discharges to the surface will be managed in order to protect fresh water.

(GW-177) DCP Midstream LP. Elisabeth Klein, Principal Environmental Specialist, 370 17th Street, Suite 2500 Denver, Colorado 80202, has submitted a renewal application for the previously approved discharge plan for their Maljamar Compressor Station located in the NE/4, SE/4 of Section 20, Township 17 South, Range 33 East, NMPM, Lea County, New Mexico. The compressor station is located approximately 1.3 miles northwest on CR-125 from Dog Lake Road to an access road and 1.3 miles northeast. The facility is in the process of being closed and any wastewater will be stored in above ground tanks prior to being transported off-site to OCD approved facilities. Groundwater most likely to be affected by a spill, leak or accidental discharge is at a depth of approximately 25 to 175 feet below the ground surface, with a total dissolved solids concentration of 1,100 mg/L. The discharge plan addresses how oilfield products and wastes will be properly handled, stored, and disposed of, including how spills, leaks, and other accidental discharges to the surface will be managed in order to protect fresh water.

(GW-178) DCP Midstream LP. Elisabeth Klein, Principal Environmental Specialist, 370 17th Street, Suite 2500 Denver, Colorado 80202, has submitted a renewal application for the previously approved discharge plan for their Wonton Compressor Station located in the NE/4, SE/4 of Section 10, Township 17 South, Range 37 East, NMPM, Lea County, New Mexico. The compressor station is located approximately 1.25 miles east of SR-18. Any wastewater will be stored in above ground tanks prior to being transported off-site to OCD approved facilities. Groundwater most

likely to be affected by a spill, leak or accidental discharge is at a depth of approximately 100 to 200 feet below the ground surface, with a total dissolved solids concentration of 1,100 mg/L. The discharge plan addresses how oilfield products and wastes will be properly handled, stored, and disposed of, including how spills, leaks, and other accidental discharges to the surface will be managed in order to protect fresh water.

(GW-280) DCP Midstream LP. Elisabeth Klein, Principal Environmental Specialist, 370 17th Street, Suite 2500 Denver, Colorado 80202, has submitted a renewal application for the previously approved discharge plan for their Northeast Carlsbad Compressor Station located in the SE/4, NE/4 of Section 6, Township 21 South, Range 28 East, NMPM, Eddy County, New Mexico. The compressor station is located approximately 2.5 miles north-northwest on CR-243 from US-180. Natural gas products, waste oil and water are stored in above ground tanks prior to being transported off-site to OCD approved facilities. Groundwater most likely to be affected by a spill, leak or accidental discharge is at a depth of approximately 13 to 30 feet below the ground surface, with a total dissolved solids concentration of 3,110 mg/L. The discharge plan addresses how oilfield products and wastes will be properly handled, stored, and disposed of, including how spills, leaks, and other accidental discharges to the surface will be managed in order to protect fresh water.

(GW-311) DCP Midstream LP. Elisabeth Klein, Principal Environmental Specialist, 370 17th Street, Suite 2500 Denver, Colorado 80202, has submitted a renewal application for the previously approved discharge plan for their Cotton Draw Compressor Station located in the NE/4, NW/4 of Section 18, Township 25 South, Range 32 East, NMPM, Lea County, New Mexico. The compressor station is located approximately 6.3 miles



NEW MEXICO ENERGY, MINERALS and NATURAL RESOURCES DEPARTMENT

BILL RICHARDSON

Governor

Joanna Prukop

Cabinet Secretary

Mark E. Fesmire, P.E.

Director

Oil Conservation Division

April 20, 2007

Ms. Elisabeth Klein
DCP Midstream, LP
370 17th Street, Suite 2500
Denver, Colorado 80202

**Re: Discharge Plan Renewal Permit (GW-316)
DCP Midstream, LP
Paige Hat Mesa Compressor Station
Lea County, New Mexico**

Dear Ms. Klein:

The New Mexico Oil Conservation Division (NMOCD) has received DCP Midstream LP's request and initial fee, dated February 26, 2007, to renew GW-316 for the Paige Hat Mesa Compressor Station located in the SW/4 NE/4 of Section 11, Township 21 South, Range 32 East, NMPM, Lea County, New Mexico. The initial submittal provided the required information in order to deem the application "administratively" complete.

Therefore, the New Mexico Water Quality Control Commission regulations (WQCC) notice requirements of 20.6.2.3108 NMAC must be satisfied and demonstrated to the NMOCD. NMOCD will provide public notice pursuant to the WQCC notice requirements of 20.6.2.3108 NMAC to determine if there is any public interest.

If there are any questions regarding this matter, please do not hesitate to contact me at (505) 476-3491 or carlj.chavez@state.nm.us. On behalf of the staff of the NMOCD, I wish to thank you and your staff for your cooperation during this discharge permit review.

Sincerely,

Carl J. Chávez

Environmental Engineer

CJC/cjc

xc: OCD District I Office, Hobbs

Chavez, Carl J, EMNRD

To: Chavez, Carl J, EMNRD
Cc: Rice, Wayne, EMNRD
Subject: Duke Energy Field Services- Note to File

On January 4, 2007, Wayne Price and Carl Chavez of the Oil Conservation Division (OCD) contacted Ruth Lang of Duke Energy Field Services at (303) 605-1713 and left a phone message regarding the large number of expired facilities (see attachment) where the discharge plan was not renewed within 120 or in advance of their expiration. Wayne Price referred to Ms. Lang's December 2, 2006 e-mail message regarding "Duke Energy Field Services Expired Discharge Plan Facilities."

Mr. Price informed Ms. Lang that all discharge plan renewal applications need to be submitted to the OCD for review by March 1, 2007. In addition, she was informed that the OCD will be issuing an Notice of Violation for neglecting to renew its discharge plan permits with the OCD.

Carl J. Chavez, CHMM
New Mexico Energy, Minerals & Natural Resources Dept.
Oil Conservation Division, Environmental Bureau
1220 South St. Francis Dr., Santa Fe, New Mexico 87505
Office: (505) 476-3491
Fax: (505) 476-3462
E-mail: CarlJChavez@state.nm.us
Website: <http://www.emnrd.state.nm.us/ocd/>
(Pollution Prevention Guidance is under "Publications")

1/5/2007

Permit ID	Facility	Company	Status	Expired	Contact	phone	e-mail	Comments
150	Pure Gold "28" CS	Duke	A	11/22/03	Lisabeth Klein	303-605-1778	eklein@duke-energy.com	Request 120 day extension to 4/1/07
162	Antelope Ridge Gas Plant	Duke	A	3/23/04	Lisabeth Klein	303-605-1778	eklein@duke-energy.com	Request 120 day extension to 4/1/07
167	Malaga CS	Duke	A	7/25/04	Lisabeth Klein	303-605-1778	eklein@duke-energy.com	Request 120 day extension to 4/1/07
311	Cotton Draw CS	Duke	A	1/6/05	Lisabeth Klein	303-605-1778	eklein@duke-energy.com	Request 120 day extension to 4/1/07
316	Hat Mesa CS	Duke	A	1/6/05	Lisabeth Klein	303-605-1778	eklein@duke-energy.com	Request 120 day extension to 4/1/07
176	Boot Leg CS	Duke	A	1/20/05	Lisabeth Klein	303-605-1778	eklein@duke-energy.com	Request 120 day extension to 4/1/07
227	Lee CS	Duke	I	12/28/05	Lisabeth Klein	303-605-1778	eklein@duke-energy.com	Submitted
168	Feagen Booster Station	Duke	I	12/27/04	Lisabeth Klein	303-605-1778	eklein@duke-energy.com	correspondence to Ben Stone during meeting in Sept. 2006 Closed 2/1/05
177	Mallamar CS	Duke	A	3/21/05	Lisabeth Klein	303-605-1778	eklein@duke-energy.com	Request 120 day extension to 4/1/07
178	Wonton CS	Duke	A	3/21/05	Lisabeth Klein	303-605-1778	eklein@duke-energy.com	Request 120 day extension to 4/1/07
24	Avalon Gas Plant	Duke	A	9/18/05	Lisabeth Klein	303-605-1778	eklein@duke-energy.com	Request 120 day extension to 4/1/07
163	Apex CS	Duke	A	4/29/04	Lisabeth Klein	303-605-1778	eklein@duke-energy.com	Request 120 day extension to 4/1/07
175	Hobbs Gas Process Plant	Duke	A	1/9/05	Lisabeth Klein	303-605-1778	eklein@duke-energy.com	Request 120 day extension to 4/1/07
16	Eunice Gas Plant	Duke	A	4/25/09	Lisabeth Klein	303-605-1778	eklein@duke-energy.com	Request 120 day extension to 4/1/07
139	CP-1 CS	Duke	A	3/23/04	Lisabeth Klein	303-605-1778	eklein@duke-energy.com	Closed 10/15/03
42	Indian Hills Gas Plant	Duke	I	4/6/2002	Lisabeth Klein	303-605-1778	eklein@duke-energy.com	Dismantled



Mark Bishop
Environmental Specialist
SH&E Services
Natural Gas & Gas Product

Conoco Inc.
921 W. Sanger
Hobbs, NM 88240
Phone 505-393-2153
Cell (281) 380-0018
E-mail mark.a.bishop@usa.conoco.com

October 9, 2001

Return Receipt Requested
Certified Mail No.
7099 3220 0001 4997 0925

State of New Mexico
Energy Minerals and Natural Resources
Oil Conservation Division
1220 South St. Francis Dr.
Santa Fe, NM 87505

RE: GW-316 Discharge Plan
Hat Mesa Compressor Station
Testing of, Underground process/ Wastewater Lines and Below Grade
Tanks and Sumps

Dear Mr. Price:

In accordance with our OCD discharge plan the following actions were performed. Mr. Paul Sheeley of the Oil conservation Division in Hobbs was notified on May 25, 2001 of scheduled integrity tests to be performed at our Hat Mesa Compressor Station. On May 30 the required integrity tests were performed with no underground leaks or lack of integrity observed. A copy of the test notes and circle charts are included for your inspection.

If you have any questions or require more information please contact me at, 505-393-2153.

Sincerely,

Mark Bishop

CC: Joyce Miley
Jeff Driver
File: 215-5-23-11

Enclosed: Circle charts
Testing Procedure & results

Flat Mesa

Underground Sump ^{Lines} Integrity Test

ARRIVED 11:30 AM 5-30-01

Blocked valve at Blow CASE inlet (2")

Blocked valve at Disposed water Non-Exempt TANK (2")

Installed $\frac{1}{4}$ " Fitting at Blow CASE to get Reading for CHART

Started Chart at 11:39 AM

Stopped CHART at 12:47 PM

PERSON'S ON location

Steve Battis CONOCO
Mitchell J. Jurey

ARRIVED 11:30 AM Flat MESA

5-30-01

Underground process line integrity Test

Blocked valve at Location inlet SCRUBBER Dump Line

Blocked valve at COMPRESSOR SCRUBBER Dump Line

Blocked inlet VALVE to CONDENSATE TANK

Installed $\frac{1}{4}$ " Fitting at Location inlet SCRUBBER Dump line

CHECK VALVE

Installed CHART at 1:00 PM

PERSON'S ON location

Steve Battis CONOCO
Mitchell J. Jurey

FIRST DAY

PRINTED IN U.S.A.
8 10 NOON 2

5200 VISA CAMP LINES
HAY MESA
UNDERGROUND TEST

Started 12:47 PM

TEJAS

Instruments, Inc.

METER NUMBER

TIME PUT ON

11:39 A.M.

DATE PUT ON

5-30-01

TUBE & DRIF. SIZE

TIME TAKEN OFF

12:47 P.M.

DATE TAKEN OFF

5-30-01

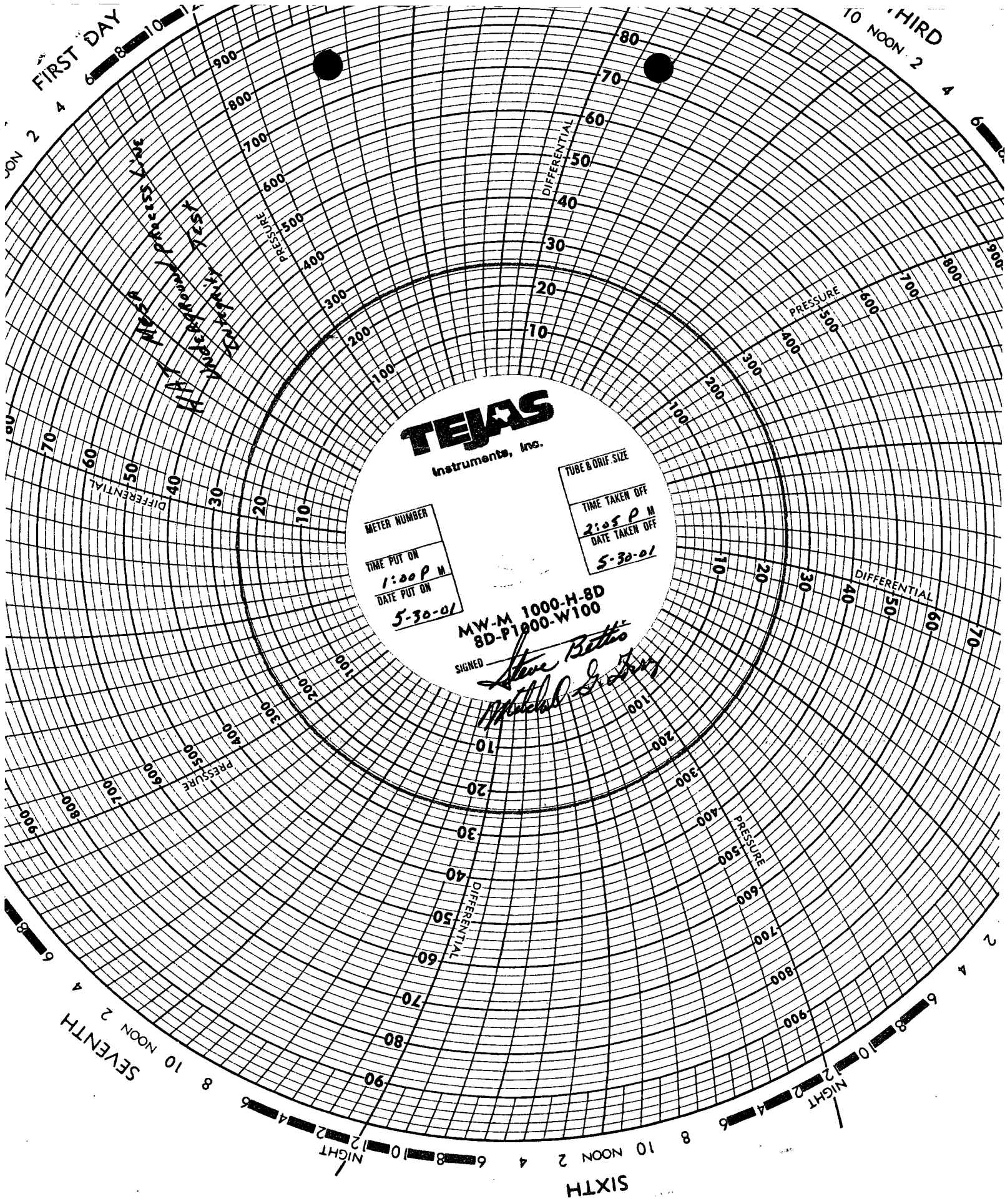
MW-M 1000-H-8D
8D-P1000-W100

SIGNED

Steve Bettis
Michael J. Jones

FIFTH

SIXTH



TEXAS
Instruments, Inc.

METER NUMBER
TIME PUT ON
1:00 P M
DATE PUT ON
5-30-01

TUBE & ORIF. SIZE
TIME TAKEN OFF
2:05 P M
DATE TAKEN OFF
5-30-01

MW-M 1000-H-8D
8D-P1000-W100

SIGNED
Steve Bettis
Michael Groves



Mark Bishop
Environmental Specialist
SH&E Services
Natural Gas & Gas Products

OIL CONSERVATION DIV.

01 APR 16 PM 3:21

Conoco Inc.
P.O. Box 90
Maljamar NM 88264
Phone 505-676-3519
Cell (281) 380-0018
E-mail mark.a.bishop@usa.conoco.com

04/06/2001

Return Receipt Requested
Certified Mail No.
7099 3220 0001 4997 4145

Mr. Wayne Price
New Mexico Energy, Minerals & Natural Resources Department
Oil Conservation Division
2040 South Pacheco Street
Santa Fe, NM 87505

Re: Discharge Plan GW – 316, Hat Mesa Compressor Station
Inspection frequency change request

Dear Mr. Price:

Conoco, Inc. requests that the inspection frequency required in Discharge Plan Approval Condition 12 (Housekeeping) be changed to monthly. This will allow us to maintain consistency with other facility Discharge Plans.

If you have any questions or require more information please contact me at 505-676-3519.

Sincerely,


Mark Bishop

CC:

Joyce Miley
File: Env



Joyce M. Miley
Environmental Consultant
Engineering and Compliance
Natural Gas & Gas Products Department

Conoco Inc.
600 N. Dairy Ashford Rd.
P.O. Box 2197, HU3036
Houston, TX 77252
Telephone: (281) 293-4498
Facsimile: (281) 293-1214

DEC 18 2000

CONSERVATION DIVISION

November 30, 2000

Certified Mail No. 7099 3220 0003 1150 1803
Return Receipt Requested

Mr. Roger Anderson
Environmental Bureau Chief
New Mexico Energy, Minerals & Natural Resources Department
Oil Conservation Division
2040 South Pacheco Street
Santa Fe, New Mexico 87505

Re: Change of Ownership
Conoco Inc., Natural Gas & Gas Products Department

Dear Mr. Anderson:

Effective December 1, 2000, Conoco Inc., Natural Gas & Gas Products Department (NG&GP) assumed ownership of LG&E Natural Gathering & Processing LLC, and LG&E Natural Pipeline LLC (LG&E). These LG&E entities, in turn, own certain natural gas facilities in SE New Mexico. These facilities and their OCD Groundwater Discharge numbers are listed in the table below.

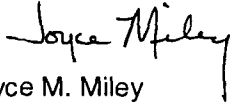
Facility Name	OCD Groundwater Discharge Permit
Antelope Ridge Gas Plant	GW-162
Hobbs Gas Plant	GW-175
Apex Compressor Station	GW-163
Bootleg (aka. NBR) Compressor Station	GW-176
Bright/Yates Compressor Station	GW-160
Cedar Canyon Compressor Station	GW-296
Cal-Mon Compressor Station	GW-143
NE Carlsbad Compressor Station	GW-280
Cotton Draw Compressor Station	GW-311
Hat Mesa Compressor Station	GW-316
Lee (aka. Lea and/or Fagan/Gillespie) Compressor Station	GW-227
Pardue Farms Compressor Station	GW-288
Pure Gold 28 Compressor Station	GW-150
Parker & Parsley (aka. Malaga) Compressor Station	GW-167

Several of these locations have conditions in their permits that require the new owner to supply a written commitment to comply with the terms and conditions of the previously approved discharge plans. LG&E has informed Conoco that all above locations are in compliance with the discharge plans. Conoco has copies of all of the approval letters and LG&E signed conditions of approval for these locations. We agree to continue to operate the locations in conformance with the groundwater permits, the approval conditions and the OCD regulations.

In addition, pursuant to certain requirements of the transaction in which Conoco acquired the entities, the names of certain entities have been changed to the following: Raptor Natural Gathering & Processing LLC and Raptor Natural Pipeline LLC (in each case replacing LG&E with Raptor).

Conoco Inc. requests that all future correspondence concerning these facilities be forwarded to me at the address above. If you have any questions or require additional information, please do not hesitate to contact Mr. Mark Bishop at (505) 623-5659 or myself at (281) 293-4498.

Sincerely,



Joyce M. Miley

cc.:

Ms. Patricia Merrill
LG&E Energy Corp.
220 West Main Street
PO Box 32030
Louisville, KY 40232-2030

Certified Mail No. 7099 3220 0003 1150 1797
Return Receipt Requested

The Santa Fe New Mexican

Since 1849 We Read You

AUG 31 1999

NM OCD

ATTN: LUPE SHERMAN
2040 S. PACHECO ST
SANTA FE, NM 87505

AD NUMBER: 104320 ACCOUNT: 56689
LEGAL NO: 65952 P.O.#: 00199000278
185 LINES 1 time(s) at \$ 81.45
AFFIDAVITS: 5.25
TAX: 5.42
TOTAL: 92.12

AFFIDAVIT OF PUBLICATION

NOTICE OF PUBLICATION

STATE OF NEW MEXICO ENERGY, MINERALS AND NATURAL RE- SOURCE DEPARTMENT OIL CONSERVATION DIVISION

Notice is hereby given that pursuant to New Mexico Water Quality Control Commission Regulations, the following discharge plan application(s) have been submitted to the Director of the Oil Conservation Division, 2040 South Pacheco, Santa Fe, New Mexico 87505, Telephone (505) 827-7131:

(GW-316) - LG&E Natural Gathering and Processing Co., John R. Delaney, (505) 393-2153, 912 West Sanger, Hobbs, NM 88240, has submitted a discharge plan application for the Hat Mesa Compressor Station located in the SW/4 NE/4 of Section 11, Township 21 South, Range 32 East, NMPM, Lea County, New Mexico. Approximately 6 barrels per day of process waste water is collected in a 210 barrel closed top steel API storage tank. Waste water from the treater operations will be trucked off site and disposed of in an OCD approved Class II disposal well. Washdown and rain water will be collected in a 100 barrel closed top steel tank prior to removal to an OCD approved disposal site. Ground water most likely to be affected in the event of an accidental discharge is at a depth of approximately 175 feet with a total dissolved solids concentration ranging of approximately 1,000 mg/l. The discharge plan addresses how spills, leaks, and other accidental discharges to the surface will

be managed.

Any interested person may obtain further information from the Oil Conservation Division and may submit written comments to the Director of the Oil Conservation Division at the address given above. The discharge plan application(s) may be viewed at the above address between 8:00 a.m. and 4:00 p.m., Monday through Friday. Prior to ruling on any proposed discharge plan application(s), the Director of the Oil Conservation Division shall allow at least thirty (30) days after the date of publication of this notice during which comments may be submitted and a public hearing may be requested by any interested person. Requests for a public hearing shall set forth the reasons why a hearing should be held. A hearing will be held if the Director determines there is significant public interest.

If no public hearing is held, the Director will approve or disapprove the proposed plan(s) based on information available. If a public hearing is held, the Director will approve or disapprove the proposed plan(s) based on the information in the discharge plan application(s) and information submitted at the hearing.

GIVEN under the Seal of New Mexico Oil Conservation Commission at Santa Fe, New Mexico, on this 20th day of August 1999.

STATE OF NEW MEXICO
OIL CONSERVATION
DIVISION

LORI WROTENBERY,
Director

Legal #65952
Pub. August 25, 1999

STATE OF NEW MEXICO COUNTY OF SANTA FE

I, B. Reiner being first duly sworn declare and say that I am Legal Advertising Representative of THE SANTA FE NEW MEXICAN, a daily newspaper published in the English language, and having a general circulation in the Counties of Santa Fe and Los Alamos, State of New Mexico and being a Newspaper duly qualified to publish legal notices and advertisements under the provisions of Chapter 167 on Session Laws of 1937; that the publication #65952 a copy of which is hereto attached was published in said newspaper 1 day(s) between 08/25/1999 and 08/25/1999 and that the notice was published in the newspaper proper and not in any supplement; the first publication being on the 25 day of August, 1999 and that the undersigned has personal knowledge of the matter and things set forth in this affidavit.

/s/

B. Reiner
LEGAL ADVERTISEMENT REPRESENTATIVE

Subscribed and sworn to before me on this
25 day of August A.D., 1999

Notary

Laura E. Harding

Commission Expires

11/23/99

Affidavit of Publication

STATE OF NEW MEXICO)

) ss.

COUNTY OF LEA)

Joyce Clemens being first duly sworn on oath deposes and says that he is Adv. Director of THE LOVINGTON DAILY LEADER, a daily newspaper of general paid circulation published in the English language at Lovington, Lea County, New Mexico; that said newspaper has been so published in such county continuously and uninterruptedly for a period in excess of Twenty-six (26) consecutive weeks next prior to the first publication of the notice hereto attached as hereinafter shown; and that said newspaper is in all things duly qualified to publish legal notices within the meaning of Chapter 167 of the 1937 Session Laws of the State of New Mexico.

That the notice which is hereto attached, entitled

Notice of Publication

Re: GW-316

~~and numbered~~ ~~xxxxxx~~

~~Court of Lea~~

~~County of Lea, New Mexico~~, was published in a regular and entire issue of THE LOVINGTON DAILY LEADER and not in any supplement thereof, ~~once each week on the same day of the week~~, for One(1) Day

~~consecutive weeks~~ beginning with the issue of

August 24, 1999

and ending with the issue of

August 24, 1999

And that the cost of publishing said notice is the sum of \$ 55.88

which sum has been (Paid) (~~Assessed~~) as Court Costs

Joyce Clemens

Subscribed and sworn to before me this

day of August 24, 1999

Debbie Schilling

Notary Public, Lea County, New Mexico

My Commission Expires June 22, ~~199~~ 2002

LEGAL NOTICE NOTICE OF PUBLICATION STATE OF NEW MEXICO ENERGY, MINERALS AND NATURAL RESOURCES DEPARTMENT OIL CONSERVATION DIVISION

Notice is hereby given that pursuant to New Mexico Water Quality Control Commission Regulations, the following discharge plan application(s) have been submitted to the Director of the Oil Conservation Division, 2040 South Pacheco, Santa Fe, New Mexico 87505, Telephone (505) 827-7131:

(GW-316)-LG&E Natural Gathering and Processing Co., John R. Delaney, (505) 393-2153, 912 West Sanger, Hobbs, NM 88240, has submitted a discharge plan application for the Hat Mesa Compressor Station located in the SW/4 NE/4 of Section 11, Township 21 South, Range 32 East, NMPM, Lea County, New Mexico. Approximately 6 barrels per day of process

waste water is collected in a 210 barrel closed top steel API storage tank. Waste water from the treater operations will be trucked off site and disposed of in an OCD approved Class II disposal well. Washdown and rain water will be collected in a 100 barrel closed top steel tank prior to removal to an OCD approved disposal site. Ground water most likely to be affected in the event of an accidental discharge is at a depth of approximately 175 feet with a total dissolved solids concentration of approximately 1,000 mg/l. The discharge plan addresses how spills, leaks, and other accidental discharges to the surface will be managed.

Any interested person may obtain further information from the Oil Conservation Division and may submit written comments to the Director of the Oil Conservation Division at the address given above. The discharge plan application(s) may be viewed at the above address between 8:00 a.m. and 4:00 p.m.,

of 58.8 acre-feet per annum ibed well:

TOWNSHIP RANGE
14 S. 37 E.

is follows:

RANGE ACRES
37 E. 19.6

ibed as follows:

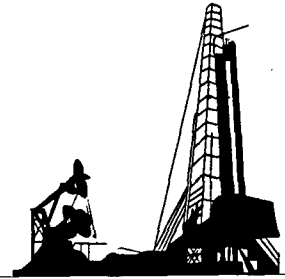
interested person. Requests for a public hearing shall set forth the reasons why a hearing should be held. A hearing will be held if the Director determines there is significant public interest.

If no public hearing is held, the Director will approve or disapprove the proposed plan(s) based on information available. If a public hearing is held, the Director will approve or disapprove the proposed plan(s) based on the information in the discharge plan application(s) and information submitted at the hearing.

GIVEN under the Seal of New Mexico Oil Conservation Commission at Santa Fe, New Mexico, on this 20th

OIL CONSERVATION DIVISION

2040 South Pacheco
Santa Fe, NM 87505
(505) 827-7133
Fax: (505) 827-8177



(PLEASE DELIVER THIS FAX)

393-0381

To: Ed Sloman

From: Jack Ford (OCD)

Date: 8-18-99

Number of Pages (Includes Cover Sheet) 2

Message: Temp. discharge approval
for Hat Mesa C.S. - Hard Copy to
Follow -

If you have any trouble receiving this, please call:
(505) 827-7133



LG & E GAS GATHERING AND PROCESSING
921 W. SANGER
HOBBS, NM 88240
Phone: 505-393-2153
Fax: 505-393-0381

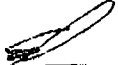
DATE: 8/17/99

TO: JACK FORD (NM OCID)

FROM: Ed SLOMAN

Number of Pages (Including Cover Sheet): 2

Comments

JACK,
THANKS FOR YOUR HELP


The information contained in this facsimile message, and in any accompanying documents, constitutes privileged confidential information which belongs to LG & E NATURAL, (or Llano, HGGP, Western, etc.). This information is intended only for the use of the individual or entity named above. If you are not the intended recipient of this information, or an employee or agent responsible for delivering this message to the intended recipient, you are hereby notified that any disclosure, copying, distribution, dissemination, or the taking of any action in reliance of this information is strictly prohibited.

If you have received this facsimile message in error, please notify Alice Major at (505) 393-2153 or the sender, in order to arrange for its return to us or its destruction.

Thank you.

**LG&E ENERGY
MARKETING**

August 17, 1999

LG&E Natural Gathering & Processing Co.
321 West Senger
Hobbs, New Mexico 88240
505-393 2153
505-393-0381 FAX

Mr. Jack Ford, C.P.G.
Oil Conservation Division
State of New Mexico
2040 S. Pacheco
Santa Fe, New Mexico 87505

Dear Mr. Ford,

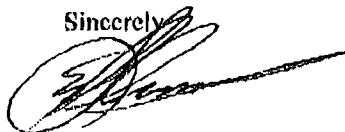
L G & E Natural Gathering and Processing Company is in the final stages of construction on a new compressor station, The Hat Mesa Compressor Station. This compressor station will consist of only one compressor well under 1000 Horsepower. There is a formal completed discharge plan in route to your office by the way of Federal Express. You should be receiving this Discharge Plan in the morning of Wednesday, August 18, 1999.

This compressor station, The Hat Mesa Compressor Station, has been constructed in conjunction with the gathering process of natural gas. The gas to be gathered is considered to be of low pressure. It is imperative for this compressor to be running to gather and pipeline this gas to a processing facility. This gas has been contracted and the producer is ready to produce the well. We are scheduled to be completed with construction of the compressor station on Thursday, August 19, 1999. Due to economic reasons we would like to start operations of this compressor station on Friday, August 20, 1999.

L G & E Natural Gathering and Processing is therefore requesting a 120 day operating variance to operate this compressor station pending the approval of the submitted discharge plan.

Your attention and assistance in this matter of mutual concern is greatly appreciated.

Sincerely,



Ed Sloman
Supervisor
Operations Support

A SUBSIDIARY OF
LG&E ENERGY

ACKNOWLEDGEMENT OF RECEIPT
OF CHECK/CASH

I hereby acknowledge receipt of check No. [REDACTED] dated 8-11-99,
or cash received on _____ in the amount of \$ 50.00

from Llano Inc

for Hat Mesa C.S. GW-316

Submitted by: [Signature] Date: 8-19-99

Submitted to ASD by: [Signature] Date: 8-19-99

Received in ASD by: _____ Date: _____

Filing Fee ☒ New Facility ☒ Renewal _____

Modification _____ Other _____
(specify)

Organization Code 521.07 Applicable FY 99

To be deposited in the Water Quality Management Fund.

Full Payment ☒ or Annual Increment _____

LLANO, INC.

BOX 1320
HOBBS, NEW MEXICO 88240

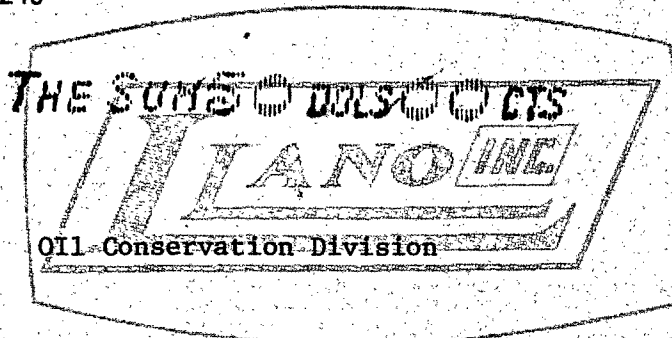
SUNWEST BANK OF HOBBS, N.A.
HOBBS, NEW MEXICO 88240

95-321
1122

CHECK DATE	CHECK NO.
8-11-99	03213

CHECK AMOUNT
\$ 50.00

PAY TO THE ORDER OF



LLANO, INC. - GENERAL ACCOUNT

VOID AFTER 90 DAYS