

GW - 317

**GENERAL
CORRESPONDENCE**

YEAR(S):
1991-2006

I hereby acknowledge receipt of check No. [REDACTED] dated 1-10-06,
or cash received on 1-19-06 in the amount of \$ 1,800
from ENTERPRISE PRODUCTS OPERATING, L.P.
for GW-317
(Facility Name)
Submitted by: _____ Date: _____ (DP No.)
Submitted to ASD by: EO MARTIN Date: 1-19-06
Received in ASD by: _____ Date: _____
Filing Fee ☒ New Facility _____ Renewal ☒
Modification _____ Other _____
(specify)
Organization Code 521.07 Applicable FY 2001
To be deposited in the Water Quality Management Fund.
Full Payment ☒ or Annual Increment _____



ENTERPRISE

AMOUNT

\$*****1,800.00

REGULAR ACCOUNT
VOID AFTER 180 DAYS

W. Randolph Farver



ENTERPRISE

ENTERPRISE PRODUCTS COMPANY, P.O. BOX 4324 HOUSTON, TEXAS 77210

INVOICE DATE	INVOICE NUMBER	COMMENTS	GROSS DISC.	NET DOLLARS	VENDOR
06-JAN-06	180000JAN0	RATTLESNAKE DIS PER GW-317	0.00	1,800.00	86292

TOTAL 1,800.00

DETATCH BEFORE DEPOSITING



Enterprise Products Operating, LP
614 Reilly Avenue
Farmington, NM 87401

RECEIVED

DEC 15 2004

OIL CONSERVATION
DIVISION

10-25-09

Mr. Roger Anderson
New Mexico Oil Conservation Division
1220 S. St. Francis
Santa Fe, NM 87505

RE: Change of Ownership

Dear Roger:

This is to notify you of the change of ownership for the El Paso Field Services Co. facilities in the San Juan Basin area, in and near Farmington, NM. A list of the effected facilities, along with the Discharge Permit numbers, is attached. These plants and compressor stations are now owned by GulfTerra Energy Partners, L.P. ("GulfTerra"). GulfTerra is no longer affiliated with El Paso Corp.. It is now a subsidiary of Enterprise Products Partners, L.P. ("Enterprise"). All the GulfTerra facilities are operated by Enterprise Products Operating, L.P.

All local contact information as listed in the Discharge Plans is still current. However, Mr. E. Randal West is no longer the Responsible Party for the facilities. The new Legally Responsible Party for all the GulfTerra/Enterprise locations is:

Mr. Terry Hurlburt
Vice President
Enterprise Products Operating, L.P.
2727 North Loop West
Houston, TX 77008.

If you need any additional information regarding the change of ownership, please call me at (505) 599-2256.

Sincerely yours,

David Bays, REM
Principal Environmental Scientist

Cc: Mr. Denny Foust – NMOCD – Aztec, NM

New Mexico Discharge Permit Numbers

Permit Number	Facility Name
GW-189	Angel Peak Plant
GW-212	Ballard Plant
GW-049	Blanco Plant
GW-71	Chaco Plant
GW-186	Kutz Plant
GW-049-1	Kutz Separator
GW-188-1	Hart Canyon #1 Station
GW0188-2	Hart Canyon #2 Station
GW-188-3	Hart Canyon #3 Station
GW-211	Largo Plant
GW-209	Lindrith Plant
GW-301	Manzanares Station
GW-298	Martinez Canyon Station
GW-303	Navajo City Station
GW-302	Potter Canyon Station
Gw-317	Rattlesnake Plant
GW-304	Turley Station
GW-153	2B-3A Station
GW-154	2B-3B Station
GW-188	3B-1 Station

RECEIVED

OCT 18 2004

OIL CONSERVATION
DIVISION

NM OIL CONSERVATION DIV.
1220 ST. FRANCIS DR
Attn: Ed Martin
SANTA FE NM 87505

ALTERNATE ACCOUNT: 56689
AD NUMBER: 00089513 ACCOUNT: 00002212
LEGAL NO: 75034 P.O. #: 05-199-050185
461 LINES 1 TIME(S) 315.04
AFFIDAVIT: 5.50
TAX: 21.44
TOTAL: 341.98

AFFIDAVIT OF PUBLICATION

STATE OF NEW MEXICO
COUNTY OF SANTA FE

I, B. Perner, being first duly sworn declare and say that I am Legal Advertising Representative of THE SANTA FE NEW MEXICAN, a daily newspaper published in the English language, and having a general circulation in the Counties of Santa Fe and Los Alamos, State of New Mexico and being a newspaper duly qualified to publish legal notices and advertisements under the provisions of Chapter 167 on Session Laws of 1937; that the publication # 75034 a copy of which is hereto attached was published in said newspaper 1 day(s) between 10/06/2004 and 10/06/2004 and that the notice was published in the newspaper proper and not in any supplement; the first date of publication being on the 6th day of October, 2004 and that the undersigned has personal knowledge of the matter and things set forth in this affidavit.

B. Perner

/S/

LEGAL ADVERTISEMENT REPRESENTATIVE

Subscribed and sworn to before me on this 6th day of October, 2004

Notary

Laura E. Harding

Commission Expires:

11/23/07

**NOTICE OF
PUBLICATION**

**STATE OF
NEW MEXICO
ENERGY, MINERALS
AND NATURAL
RESOURCES
DEPARTMENT
OIL CONSERVATION
DIVISION**

Notice is hereby given that pursuant to the New Mexico Water Quality Control Commission Regulations, the following discharge plan application has been submitted to the Director of the Oil Conservation Division, 1220 South Saint Francis Drive, Santa Fe, New Mexico 87505, Telephone (505) 476-3440:

(GW-049) - El Paso Natural Gas Co., Mr. Richard Duarte, 3801 Atresco Blvd. NW, Albuquerque, NM 87120, has submitted a renewal application for their "A" Blanco Plant facility located in the NE/4 NE/4 of Section 23, Township 27 West, Range 13 North, NMPM, San Juan County, New Mexico. A small amount of engine wash-down water and storm water runoff is discharged to the City of Bloomfield publicly owned treatment works. Groundwater most likely to be affected by a spill, leak, or accidental discharge to the surface varies in depth from 14 to 39 feet. The discharge plan addresses how spill, leaks, and other accidental discharges to the surface will be managed.

(GW-317) - El Paso Field Services, David Bays, 614 Reilly Ave., Farmington, NM 87401, has submitted a renewal application for the Rattlesnake Canyon Gas Plant, located in the NE/4 of Section 16, Township 32 North, Range 9 West, NMPM, San Juan County, New Mexico. Approximately 375 barrels per month of produced water with a dissolved solids concentration ranging from 10,000 to 15,000 mg/L is collected in closed steel tanks prior to transport to an OCD-approved disposal facility. Approximately 10 barrels per year of wastewater from equipment washdown are collected in a double-walled underground sump prior to transport to an OCD-approved disposal facility. Groundwater most likely to be affected in the event of an acci-

dental discharge is at a depth of approximately 75 feet with a total dissolved solids concentration ranging from 48 mg/L to 52 mg/L. The discharge plan addresses how spills, leaks, and other accidental discharges to the surface will be managed.

(GW-049-2) - El Paso Field Services, David Bays, 614 Reilly Ave., Farmington, NM 87401, has submitted a discharge permit application for the Blanco C and D Compressor Station, located in the N/2 N/2 of Section 14, Township 29 North, Range 11 West, NMPM, San Juan County, New Mexico. Approximately 9,500 barrels per month of crude oil and natural gas condensate are collected in closed-top steel tanks until sale to the Giant Refinery near Bloomfield, NM. Groundwater most likely to be affected in the event of an accidental discharge is at a depth of approximately 15 to 40 feet. The discharge plan addresses how spills, leaks, and other accidental discharges to the surface will be managed.

(GW-182) - Williams Field Services, Michael K. Lane, (505) 632-4625, 188 CR 4900, Bloomfield, New Mexico 87413, has submitted a discharge plan renewal application for the Navajo CDP Compressor Station located in the NE/4 NW/4 of Section 2, Township 30 North, Range 8 West, NMPM, San Juan County, New Mexico. After oil/water separation, approximately 42 gallons per day of process waste water with a total dissolved solids concentration in excess of 2000 mg/L is stored in an above ground, closed-top steel tank prior to transport to an OCD approved off-site disposal facility. Groundwater most likely to be affected in the event of an accidental discharge is at a depth of 20 feet with a total dissolved solids concentration of approximately 2000 mg/L. The discharge plan addresses how spills, leaks, and other accidental discharges to the surface will be managed.

(GW-047) - Williams Field Services, Mark K. Lane, (505) 632-4625, 188 CR 4900, Bloomfield, New Mexico 87413, has submitted a discharge plan renewal application for the Lybrook Natural Gas Processing Plant located in the N/2 NW/4 of Section 14, Township 23 North, Range 7 West, NMPM, Rio Arriba County, New Mexico. After oil/water separation, approximately 3000 gallons per day of process wastewater with a total dissolved solids concentration of approximately 7500 mg/L is disposed of in clay lined evaporation ponds. Groundwater most likely to be affected in the event of an accidental discharge is at a depth ranging from 180 to 200 feet with a total dissolved solids concentration of approximately 700 mg/L. The discharge plan addresses how spills, leaks, and other accidental discharges to the surface will be managed.

(GW-161) - Williams Production Company, LLC (formerly J. M. Huber Corporation), 999 Goddard Avenue, Ignacio, Colorado 81137 has submitted a renewal application for their ROSA COMPRESSOR STATION located in the SW/4

SE/4 of Section 26, Township 31 North, Range 4 West, Rio Arriba County, New Mexico. Approximately 9 gallons per day of wastewater with a dissolved solids concentration of 1,500 mg/L is collected in a 400 barrel closed fiberglass tank prior to transport off-site to an OCD approved disposal facility. Groundwater most likely to be affected in the event of an accidental discharge at the surface is at a depth greater than 20 feet with a total dissolved solids concentration ranging from 2000 mg/L to 10000 mg/L. The discharge plan addresses how spills, leaks, and other accidental discharges to the surface will be managed.

(GW-008) - El Paso Natural Gas, Robert H. St. John, 3300 North "A" Building Two, Suite 200, Midland, TX 79705, has submitted a discharge permit renewal application for the Monument Compressor Station, located in the NW/4 of Section 1, Township 20 South, Range 36 East, NMPM, Lea County, New Mexico. Approximately 9,600 gallons per day of processed wastewater with total dissolved solids concentration of 3,500 mg/L is stored in steel tanks prior to transport for disposal in an OCD-approved Class II injection well. Groundwater most likely to be affected in the event of an accidental discharge at the surface is at a depth of approximately 35 feet with a total dissolved solids concentration of approximately 500 mg/L. The discharge plan addresses how spills, leaks, and other accidental discharges to the surface will be managed.

(GW-144) - Duke Energy Field Services, LP, Mr. Greg Kardos, (505) 628-0282, 3300 N. A Street, Building 7, Midland, Texas 79705, has submitted a discharge renewal application for the West (a.k.a. Westall) Compressor Station located in the SW/4 NW/4 of Section 35, Township 22 South, Range 28 East, NMPM, Eddy County, New Mexico. Duke Energy Field Services, LP certifies that no liquid or solid wastes generated on site are discharged so that they may move directly or indirectly into fresh waters. Any liquid wastes are collected and stored in containers prior to transport offsite to an OCD approved disposal facility. Groundwater most likely to be affected in the event of an accidental discharge is at a depth of approximately 16 feet with a total dissolved solids concentration of approximately 7,843 mg/L. The discharge permit addresses how spills, leaks, and other accidental discharges to the surface will be managed.

(GW-048) - Davis Gas Processing Company, Donald K. Judd, Agent, (432) 682-6311, 211 North Colorado Street, Midland, Texas 79701-4696, has submitted a discharge renewal application for the Denton Gas Plant located in the SE/4 of Section 2, Township 15 South, Range 37 East, NMPM, Lea County, New Mexico. Approximately 750 gallons per day of process waste water with a total dissolved solids concentration of approximately 2000 mg/L will be collected and stored on site in closed storage tanks prior to disposal in an OCD approved con-

tract Injection Class II well. Groundwater most likely to be affected in the event of an accidental discharge is at a depth of approximately 40 feet with a total dissolved solids concentration ranging from 610 to 1600 mg/L. The discharge plan addresses how spills, leaks, and other accidental discharges to the surface will be managed.

Any interested person may obtain further information from the Oil Conservation Division and may submit written comments to the Director of the Oil Conservation Division at the address given above. The discharge plan application may be viewed at the above address between 8:00 a.m. and 4:00 p.m., Monday thru Friday. Prior to ruling on any proposed discharge plan or its modification, the Director of the Oil Conservation Division shall allow at least thirty (30) days after the date of publication of this notice during which comments may be submitted to him and public hearing may be requested by any interested person. Request for public hearing shall set forth the reasons why a hearing shall be held. A hearing will be held if the director determines that there is significant public interest.

If no hearing is held, the Director will approve or disapprove the plan based on the information available. If a public hearing is held, the Director will approve the plan based on the information in the plan and information presented at the hearing.

GIVEN under the Seal of New Mexico Conservation Commission at Santa Fe, New Mexico, on this 30th day of September 2004.

STATE OF
NEW MEXICO
OIL CONSERVATION
DIVISION

SEAL

JOANNA PRUKOP,
Acting Director
Legal #75034
Pub. October 6, 2004

AFFIDAVIT OF PUBLICATION

Ad No. 50560

STATE OF NEW MEXICO
County of San Juan:

CONNIE PRUITT, being duly sworn says:
That she is the CLASSIFIED MANAGER of
THE DAILY TIMES, a daily newspaper of
general circulation published in English at
Farmington, said county and state, and that
the hereto attached Legal Notice was
published in a regular and entire issue of the
said DAILY TIMES, a daily newspaper duly
qualified for the purpose within the meaning of
Chapter 167 of the 1937 Session Laws of the
State of New Mexico for publication and
appeared in the Internet at The Daily Times
web site on the following day(s):

Wednesday, October 6, 2004.

And the cost of the publication is \$143.61.

Connie Pruitt

ON 10-7-04 CONNIE PRUITT
appeared before me, whom I know personally
to be the person who signed the above
document.

Sunny Beck
My Commission Expires April 2, 2008.

COPY OF PUBLICATION

NOTICE OF PUBLICATION

STATE OF NEW MEXICO
ENERGY, MINERALS AND NATURAL RESOURCES DEPARTMENT
OIL CONSERVATION DIVISION

Notice is hereby given that pursuant to the New Mexico Water Quality Control Commission Regulations, the following discharge plan application has been submitted to the Director of the Oil Conservation Division, 1220 South Saint Francis Drive, Santa Fe, New Mexico 87505, Telephone (505) 476-3440:

(GW-049) - El Paso Natural Gas Co., Mr. Richard Duarte, 3801 Arisco Blvd. NW, Albuquerque, NM 87120, has submitted a renewal application for their "A" Blanco Plant facility located in the NE/4 NE/4 of Section 25, Township 27 West, Range 13 North, NMPM, San Juan County, New Mexico. A small amount of engine wash-down water and storm water runoff is discharged to the City of Bloomfield publicly owned treatment works. Groundwater most likely to be affected by a spill, leak, or accidental discharge to the surface varies in depth from 14 to 39 feet. The discharge plan addresses how spills, leaks, and other accidental discharges to the surface will be managed.

(GW-317) - El Paso Field Services, David Bays, 614 Reilly Ave., Farmington, NM 87401, has submitted a renewal application for the Rattlesnake Canyon Gas Plant, located in the NE/4 of Section 16, Township 32 North, Range 9 West, NMPM, San Juan County, New Mexico. Approximately 375 barrels per month of produced water with a dissolved solids concentration ranging from 10,000 to 15,000 mg/L is collected in closed steel tanks prior to transport to an OCD-approved disposal facility. Approximately 10 barrels per year of wastewater from equipment washdown are collected in a double-walled underground sump prior to transport to an OCD-approved disposal facility. Groundwater most likely to be affected in the event of an accidental discharge is at a depth of approximately 75 feet with a total dissolved solids concentration ranging from 48 mg/L to 52 mg/L. The discharge plan addresses how spills, leaks, and other accidental discharges to the surface will be managed.

(GW-049-2) - El Paso Field Services, David Bays, 614 Reilly Ave., Farmington, NM 87401, has submitted a discharge permit application for the Blanco C and D Compressor Station, located in the N/2 N/2 of Section 14, Township 29 North, Range 11 West, NMPM, San Juan County, New Mexico. Approximately 9,500 barrels per month of crude oil and natural gas condensate are collected in closed-top steel tanks until sale to the Giant Refinery near Bloomfield, NM. Groundwater most likely to be affected in the event of an accidental discharge is at a depth of approximately 15 to 40 feet. The discharge plan addresses how spills, leaks, and other accidental discharges to the surface will be managed.

(GW-182) - Williams Field Services, Michael K. Lane, (505) 632-4625, 188 CR 4900, Bloomfield, New Mexico 87413, has submitted a discharge plan renewal application for the Navajo CDP Compressor Station located in the NE/4 NW/4 of Section 2, Township 30 North, Range 8 West, NMPM, San Juan County, New Mexico. After oil/water separation, approximately 42 gallons per day of process waste water with a total dissolved solids concentration in excess of 2000 mg/l is stored in an above ground, closed-top steel tank prior to transport to an OCD approved off-site disposal facility. Ground water most likely to be affected in the event of an accidental discharge is at a depth of 20 feet with a total dissolved solids concentration of approximately 2000 mg/l. The discharge plan addresses how spills, leaks, and other accidental discharges to the surface will be managed.

(GW-047) - Williams Field Services, Mark K. Lane, (505) 632-4625, 188 CR 4900, Bloomfield, New Mexico 87413, has submitted a discharge plan renewal application for the Lybrook Natural Gas Processing Plant located in the N/2 NW/4 of Section 14, Township 23 North, Range 7 West, NMPM, Rio Arriba County, New Mexico. After oil/water separation, approximately 3000 gallons per day of process wastewater with a total dissolved solids concentration of approximately 7500 mg/l is disposed of in clay lined evaporation ponds. Ground water most likely to be affected in the event of an accidental discharge is at a depth ranging from 180 to 200 feet with a total dissolved solids concentration of approximately 700 mg/l. The discharge plan addresses how spills, leaks, and other accidental discharges to the surface will be managed.

(GW-161) - Williams Production Company, LLC (formerly J. M. Huber Corporation), 999 Goddard Avenue, Ignacio, Colorado 81137 has submitted a renewal application for their ROSA COMPRESSOR STATION located in the SW/4 SE/4 of Section 26, Township 31 North, Range 4 West, Rio Arriba County, New Mexico. Approximately 9 gallons per day of wastewater with a dissolved solids concentration of 1,500 mg/l is collected in a 400 barrel closed fiberglass tank prior to transport off-site to an OCD approved disposal facility. Ground water most likely to be affected in the event of an accidental discharge at the surface is at a depth greater than 20 feet with a total dissolved solids concentration ranging from 2000 mg/l to 10000 mg/l. The discharge plan addresses how spills, leaks, and other accidental discharges to the surface will be managed.

Any interested person may obtain further information from the Oil Conservation Division and may submit written comments to the Director of the Oil Conservation Division at the address given above. The discharge plan application may be viewed at the above address between 8:00 a.m. and 4:00 p.m., Monday thru Friday. Prior to ruling on any proposed discharge plan or its modification, the Director of the Oil Conservation Division shall allow at least thirty (30) days after the date of publication of this notice during which comments may be submitted to him and public hearing may be requested by any interested person. Request for public hearing shall set forth the reasons why a hearing shall be held.

A hearing will be held if the director determines that there is significant public interest.

If no hearing is held, the Director will approve or disapprove the plan based on the information available. If a public hearing is held, the Director will approve the plan based on the information in the plan and information presented at the hearing.

GIVEN under the Seal of New Mexico Conservation Commission at Santa Fe, New Mexico, on this 30th day of September 2004.

STATE OF NEW MEXICO
OIL CONSERVATION DIVISION

SEAL

JOANNA PRUKOP, Acting Director

Legal No. 50560 published in The Daily Times, Farmington, New Mexico on Wednesday, October 6, 2004.

NOTICE OF PUBLICATION

STATE OF NEW MEXICO ENERGY, MINERALS AND NATURAL RESOURCES DEPARTMENT OIL CONSERVATION DIVISION

Notice is hereby given that pursuant to the New Mexico Water Quality Control Commission Regulations, the following discharge plan application has been submitted to the Director of the Oil Conservation Division, 1220 South Saint Francis Drive, Santa Fe, New Mexico 87505, Telephone (505) 476-3440:

(GW-317) - El Paso Field Services, David Bays, 614 Reilly Ave., Farmington, NM 87401, has submitted a renewal application for the Rattlesnake Canyon Gas Plant, located in the NE/4 of Section 16, Township 32 North, Range 9 West, NMPM, San Juan County, New Mexico. Approximately 375 barrels per month of produced water with a dissolved solids concentration ranging from 10,000 to 15,000 mg/L is collected in closed steel tanks prior to transport to an OCD-approved disposal facility. Approximately 10 barrels per year of waste water from equipment washdown is collected in a double-walled underground sump prior to transport to an OCD-approved disposal facility. Groundwater most likely to be affected in the event of an accidental discharge is at a depth of approximately 75 feet with a total dissolved solids concentration ranging from 48 mg/L to 52 mg/L. The discharge plan addresses how spills, leaks, and other accidental discharges to the surface will be managed.

Any interested person may obtain further information from the Oil Conservation Division and may submit written comments to the Director of the Oil Conservation Division at the address given above. The discharge plan application may be viewed at the above address between 8:00 a.m. and 4:00 p.m., Monday thru Friday. Prior to ruling on any proposed discharge plan or its modification, the Director of the Oil Conservation Division shall allow at least thirty (30) days after the date of publication of this notice during which comments may be submitted to him and public hearing may be requested by any interested person. Request for public hearing shall set forth the reasons why a hearing shall be held.

A hearing will be held if the director determines that there is significant public interest.

If no hearing is held, the Director will approve or disapprove the plan based on the information available. If a public hearing is held, the Director will approve the plan based on the information in the plan and information presented at the hearing.

GIVEN under the Seal of New Mexico Conservation Commission at Santa Fe, New Mexico, on this 30th day of September 2004.

STATE OF NEW MEXICO
OIL CONSERVATION DIVISION

SEAL

Mark E. Fesmire, P.E., Director



NOV 10 1999

NEW MEXICO OIL CONSERVATION DIVISION

November 8, 1999

New Mexico Oil Conservation Division
2040 S. Pacheco
Santa Fe, NM 87505

Dear Sirs:

Please find enclosed one signed copy of the El Paso Field Services Co. Rattlesnake Canyon Treating Plant and Compressor Station Discharge Plan (GW-317) Approval Conditions.

Sincerely yours,

A handwritten signature in cursive script that reads 'David Bays'.

David Bays, REM
Principal Environmental Scientist



NEW MEXICO ENERGY, MINERALS
& NATURAL RESOURCES DEPARTMENT

OIL CONSERVATION DIVISION
2040 South Pacheco Street
Santa Fe, New Mexico 87505
(505) 827-7131

October 25, 1999

CERTIFIED MAIL
RETURN RECEIPT NO. Z-274-520-543

Mr. David Bays, REM
El Paso Field Services
614 Reilly Avenue
Farmington, New Mexico 87401

RE: Discharge Plan Approval GW-317
El Paso Field Services
Rattlesnake Canyon Treating Plant and Compressor Station
San Juan County, New Mexico

Dear Mr. Bays:

The ground water discharge plan GW-317 for the El Paso Field Services Rattlesnake Canyon Treating Plant and Compressor Station located in the NE/4 of Section 16, Township 32 North, Range 9 West, NMPM, San Juan County, New Mexico, **is hereby approved** under the conditions contained in the enclosed attachment. The discharge plan consists of the application dated August 21, 1999 and the attached conditions of approval. Enclosed are two copies of the conditions of approval. **Please sign and return one copy to the New Mexico Oil Conservation Division (OCD) Santa Fe Office within 10 working days of receipt of this letter.**

The discharge plan application was submitted pursuant to Section 3106 of the New Mexico Water Quality Control Commission (WQCC) Regulations. It is approved pursuant to Section 3109.A. Please note Sections 3109.E and 3109.F, which provide for possible future amendments or modifications of the plan. Please be advised that approval of this plan does not relieve El Paso Field Services of liability should operations result in pollution of surface water, ground water, or the environment.

Please be advised that all exposed pits, including lined pits and open tanks (tanks exceeding 16 feet in diameter), shall be screened, netted, or otherwise rendered nonhazardous to wildlife including migratory birds.

Mr. David Bays, REM
GW- 317 Rattlesnake Canyon Treating Plant and Compressor Station
October 25, 1999
Page 2

Please note that Section 3104 of the regulations provides: "When a plan has been approved, discharges must be consistent with the terms and conditions of the plan." Pursuant to Section 3107.C., El Paso Field Services is required to notify the Director of any facility expansion, production increase, or process modification that would result in any change in the discharge of water quality or volume.

Pursuant to Section 3109.G.4., this plan is for a period of five years. This approval will expire on **October 25, 2004**, and El Paso Field Services should submit an application in ample time before this date. Note that under Section 3106.F. of the regulations, if a discharger submits a discharge plan application at least 120 days before the discharge plan expires and is in compliance with the approved plan, then the existing discharge plan will not expire until the application for has been approved or disapproved. It should be noted that all discharge plan facilities will be required to submit the results of an underground drainage testing program as a requirement for discharge plan .

The discharge plan application for the El Paso Field Services Rattlesnake Canyon Treating Plant and Compressor Station is subject to WQCC Regulation 3114. Every billable facility submitting a discharge plan application will be assessed a fee equal to the filing fee of \$50 plus a flat fee of \$690.00 for compressor station facilities with horsepower rating between 1001 and 3000 horsepower. The OCD has received the filing fee.

Please make all checks payable to **NMED-Water Quality Management** and addressed to the OCD Santa Fe Office.

On behalf of the staff of the OCD, I wish to thank you and your staff for your cooperation during this discharge plan review.

Sincerely,



Roger C. Anderson
Chief, Environmental Bureau
Oil Conservation Division

RCA/wjf
Attachment

xc: OCD Aztec Office

ATTACHMENT TO THE DISCHARGE PLAN GW-317
EL PASO FIELD SERVICES
RATTLESNAKE CANYON TREATING PLANT AND COMPRESSOR STATION
DISCHARGE PLAN APPROVAL CONDITIONS
(October 25, 1999)

1. Payment of Discharge Plan Fees: The \$50.00 filing fee has been received by the OCD. The \$690.00 required flat fee may be paid in a single payment due at the time of approval, or in equal annual installments over the duration of the plan, with the first payment due upon receipt of this approval.
2. El Paso Field Services Commitments: El Paso Field Services will abide by all commitments submitted in the discharge plan application dated August 21, 1999 and these conditions for approval.
3. Waste Disposal: All wastes will be disposed of at an OCD approved facility. Only oilfield exempt wastes shall be disposed of down Class II injection wells. Non-exempt oilfield wastes that are non-hazardous may be disposed of at an OCD approved facility upon proper waste characterization per 40 CFR Part 261.
4. Drum Storage: All drums containing materials other than fresh water must be stored on an impermeable pad with curbing. All empty drums will be stored on their sides with the bungs in and lined up on a horizontal plane. Chemicals in other containers such as sacks or buckets will also be stored on an impermeable pad and curb type containment.
5. Process Areas: All process and maintenance areas which show evidence that leaks and spills are reaching the ground surface must be either paved and curbed or have some type of spill collection device incorporated into the design.
6. Above Ground Tanks: All above ground tanks which contain fluids other than fresh water must be bermed to contain a volume of one-third more than the total volume of the largest tank or of all interconnected tanks. All new tanks or existing tanks that undergo a major modification, as determined by the Division, must be placed within an impermeable bermed enclosure.
7. Above Ground Saddle Tanks: Above ground saddle tanks must have impermeable pad and curb type containment unless they contain fresh water or fluids that are gases at atmospheric temperature and pressure.
8. Labeling: All tanks, drums and containers will be clearly labeled to identify their contents and other emergency notification information.

9. Below Grade Tanks/Sumps: All below grade tanks, sumps, and pits must be approved by the OCD prior to installation or upon modification and must incorporate secondary containment and leak-detection into the design. All pre-existing sumps and below-grade tanks must demonstrate integrity on an annual basis. Integrity tests include pressure testing to 3 pounds per square inch above normal operating pressure and/or visual inspection of cleaned out tanks and/or sumps, or other OCD approved methods. The OCD will be notified at least 72 hours prior to all testing.
10. Underground Process/Wastewater Lines: All underground process/wastewater pipelines must be tested to demonstrate their mechanical integrity a minimum of every 5 years. The permittee may propose various methods for testing such as pressure testing to 3 pounds per square inch above normal operating pressure or other means acceptable to the OCD. The OCD will be notified at least 72 hours prior to all testing.
11. Class V Wells: Leach fields and other wastewater disposal systems at OCD regulated facilities which inject non-hazardous fluid into or above an underground source of drinking water are considered Class V injection wells under the EPA UIC program. All Class V wells that inject non-hazardous industrial wastes or a mixture of industrial wastes and domestic wastes will be closed unless it can be demonstrated that groundwater will not be impacted in the reasonably foreseeable future. Closure of Class V wells must be in accordance with a plan approved by the Division's Santa Fe Office. The OCD allows industry to submit closure plans which are protective of human health, the environment and groundwater as defined by the WQCC, and are cost effective. Class V wells that inject domestic waste only must be permitted by the New Mexico Environment Department.
12. Housekeeping: All systems designed for spill collection/prevention will be inspected weekly and after each storm event to ensure proper operation and to prevent overtopping or system failure. A record of inspections will be retained on site for a period of five years.
13. Spill Reporting: All spills/releases will be reported pursuant to OCD Rule 116 and WQCC 1203 to the OCD Aztec District Office.
14. Transfer of Discharge Plan: The OCD will be notified prior to any transfer of ownership, control, or possession of a facility with an approved discharge plan. A written commitment to comply with the terms and conditions of the previously approved discharge plan must be submitted by the purchaser and approved by the OCD prior to transfer.

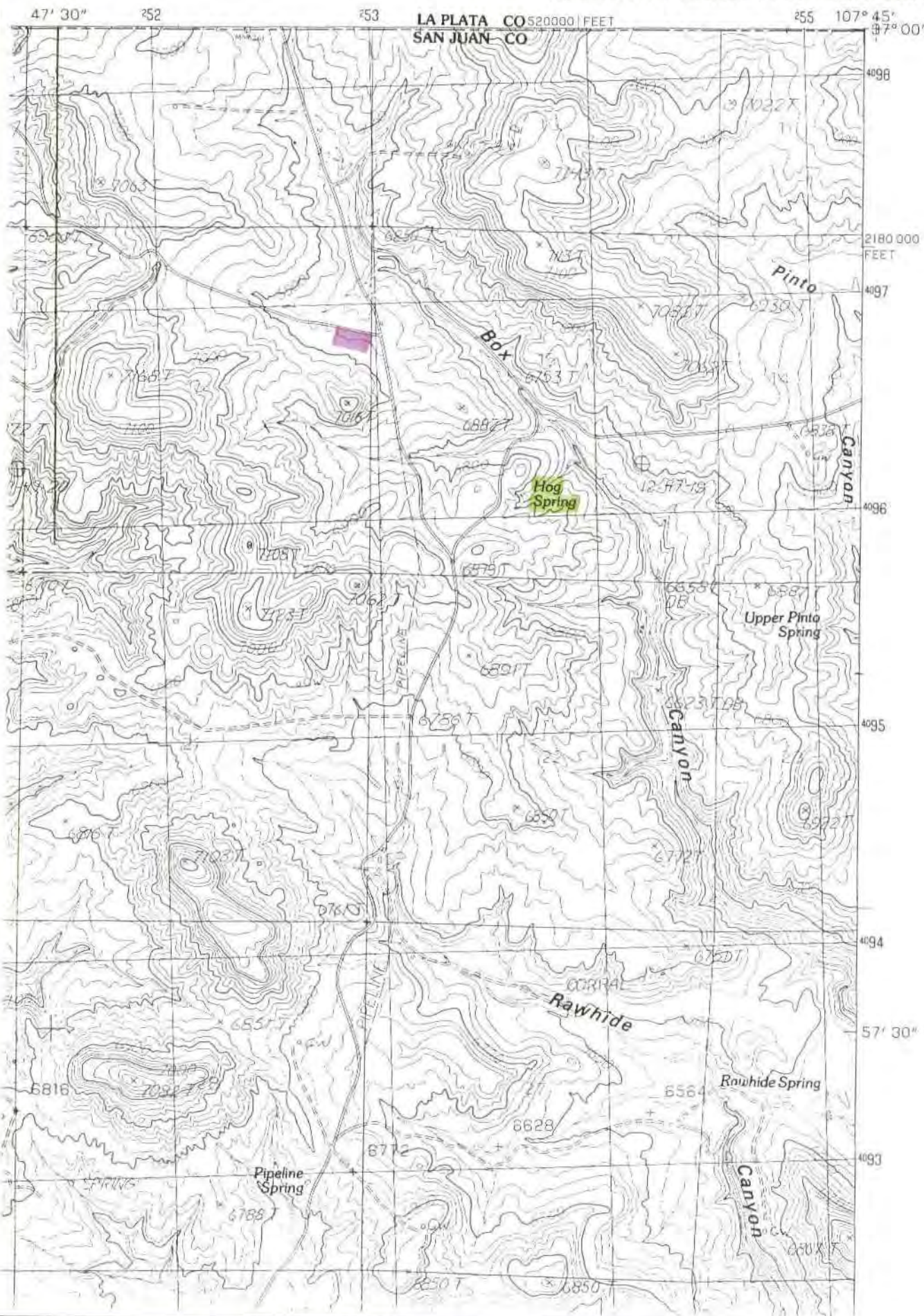
15. Closure: The OCD will be notified when operations of the Rattlesnake Canyon Treating Plant and Compressor Station are discontinued for a period in excess of six months. Prior to closure of the Rattlesnake Canyon Treating Plant and Compressor Station a closure plan will be submitted for approval by the Director. Closure and waste disposal will be in accordance with the statutes, rules and regulations in effect at the time of closure.
16. Certification: El Paso Field Services, by the officer whose signature appears below, accepts this permit and agrees to comply with all terms and conditions contained herein. El Paso Field Services further acknowledges that these conditions and requirements of this permit may be changed administratively by the Division for good cause shown as necessary to protect fresh water, human health and the environment.

Accepted:

EL PASO FIELD SERVICES

by _____
Title

MOUNT NEBO QUADRANGLE
NEW MEXICO-COLORADO
7.5 MINUTE SERIES (TOPOGRAPHIC)



The Santa Fe New Mexican

Since 1849. We Read You.

SEP 22 1999

NM OIL CONSERVATION DIV.
ATTN: LUPE SHERMAN
204 SOUTH PACHECO STREET
SANTA FE, NM 87505

AD NUMBER: 109574 ACCOUNT: 56689
LEGAL NO: 66099 P.O.#: 00199000278
188 LINES 1 time(s) at \$ 82.77
AFFIDAVITS: 5.25
TAX: 5.50
TOTAL: 93.52

AFFIDAVIT OF PUBLICATION

NOTICE OF PUBLICATION

STATE OF NEW MEXICO ENERGY, MINERALS AND NATURAL RESOURCES DEPARTMENT OIL CONSERVATION DIVISION

Notice is hereby given that pursuant to New Mexico Water Quality Control Commission Regulations, the following discharge plan application(s) have been submitted to the Director of the Oil Conservation Division, 2040 South Pacheco, Santa Fe, New Mexico 87505. Telephone (505) 827-7131:

(GW-317) - EL PASO FIELD SERVICES COMPANY, David Bays, (505) 599-2256, 614 Reilly Avenue, Farmington, New Mexico 87401-2634, has submitted a discharge application for the Rattlesnake Canyon Compressor Station located in the NE/4 of Section 16, Township 31 North, Range 9 West, NMPM, San Juan County, New Mexico. Approximately 375 barrels per month of produced water, with a dissolved solids concentration ranging from 10,000 to 15,000 mg/l, is collected in closed steel tanks prior to transport off-site to an OCD approved disposal facility. Approximately 10 barrels per year of waste water from equipment washdown is collected in a double-walled underground sump prior to transport off-site to an OCD approved disposal facility. Ground water most likely to be affected in the event of an accidental discharge is at a depth of approximately 75 feet with a total dissolved solids concentration ranging from 48 mg/l to 52 mg/l. The discharge plan ad-

resses how spills, leaks, and other accidental discharged to the surface will be managed.

Any interested person may obtain further information from the Oil Conservation Division and may submit written comments to the Director of the Oil Conservation Division at the address given above. The discharge plan application(s) may be viewed at the above address between 8:00 a.m. and 4:00 p.m., Monday through Friday. Prior to ruling on any proposed discharge plan application(s), the Director of the Oil Conservation Division shall allow at least thirty (30) days after the date of publication of this notice during which comments may be submitted and a public hearing may be requested by any interested person. Requests for a public hearing shall set forth the reasons why a hearing should be held. A hearing will be held if the Director determines there is significant public interest.

If no public hearing is held, the Director will approve or disapprove the proposed plan(s) based on information available. If a public hearing is held, the Director will approve or disapprove the proposed plan(s) based on the information in the discharge plan application(s) and information submitted at the hearing.

GIVEN under the Seal of New Mexico Oil Conservation Commission at Santa Fe, New Mexico, on this 14th day of September, 1999.

STATE OF NEW MEXICO
OIL CONSERVATION
DIVISION
LORI WROTENBERY,
Director

Legal #66099
Pub. September 21, 1999

STATE OF NEW MEXICO COUNTY OF SANTA FE

I, PAMELA BEACH being first duly sworn declare and say that I am Legal Advertising Representative of THE SANTE FE NEW MEXICAN, a daily newspaper published in the English language, and having a general circulation in the Counties of Santa Fe and Los Alamos, State of New Mexico and being a Newspaper duly qualified to publish legal notices and advertisements under the provisions of Chapter 167 on Session Laws of 1937; that the publication #66099 a copy of which is hereto attached was published in said newspaper 1 day(s) between 09/21/1999 and 09/21/1999 and that the notice was published in the newspaper proper and not in any supplement; the first publication being on the 21 day of September, 1999 and that the undersigned has personal knowledge of the matter and things set forth in this affidavit.

/s/

Pamela Beach

LEGAL ADVERTISEMENT REPRESENTATIVE

Subscribed and sworn to before me on this
21 day of September A.D., 1999

Notary

Laura E. Harding

Commission Expires

11/23/99

202 East Marcy Street • P.O. Box 2048 • Santa Fe, New Mexico 87501

505-983-3303

AFFIDAVIT OF PUBLICATION

Ad No. 41762

STATE OF NEW MEXICO

County of San Juan:

ALETHIA ROTH LISBERGER, being duly sworn says: That she is the Classified Manager of THE DAILY TIMES, a daily newspaper of general circulation published in English at Farmington, said county and state, and that the hereto attached Legal Notice was published in a regular and entire issue of the said DAILY TIMES, a daily newspaper duly qualified for the purpose within the meaning of Chapter 167 of the 1937 Session Laws of the State of New Mexico for publication on the following day(s):

Friday, September 24, 1999

and the cost of publication is:\$78.40

Alethia Rothlisberger

On 9/30/99 ALETHIA ROTH LISBERGER appeared before me, whom I know personally to be the person who signed the above document.

Christine L. Dwyer
My Commission Expires May 8, 2003.

COPY OF PUBLICATION

918

Legals

NOTICE OF PUBLICATION

STATE OF NEW MEXICO ENERGY, MINERALS AND NATURAL RESOURCES DEPARTMENT OIL CONSERVATION DIVISION

Notice is hereby given that pursuant to New Mexico Water Quality Control Commission Regulations, the following discharge plan application(s) have been submitted to the Director of the Oil Conservation Division, 2040 South Pacheco, Santa Fe, New Mexico 87505, Telephone (505) 827-7131:

(GW-317) - EL PASO FIELD SERVICES COMPANY, David Bays, (505) 599-2256, 614 Reilly Avenue, Farmington, New Mexico 87401-2634, has submitted a discharge application for the Rattlesnake Canyon Compressor Station located in the NE/4 of Section 16, Township 32 North, Range 9 West, NMPM, San Juan County, New Mexico. Approximately 375 barrels per month of produced water, with a dissolved solids concentration ranging from 10,000 to 15,000 mg/l, is collected in closed steel tanks prior to transport off-site to an OCD approved disposal facility. Approximately 10 barrels per year of waste water from equipment washdown is collected in a double-walled underground sump prior to transport off-site to an OCD approved disposal facility. Ground water most likely to be affected in the event of an accidental discharge is at a depth of approximately 75 feet with a total dissolved solids concentration ranging from 48 mg/l to 52 mg/l. The discharge plan addresses how spills, leaks, and other accidental discharges to the surface will be managed.

Any interested persons may obtain further information from the Oil Conservation Division and may submit written comments to the Director of the Oil Conservation Division at the address given above. The discharge plan application(s) may be viewed at the above address between 8:00 a.m. and 4:00 p.m., Monday through Friday. Prior to ruling on any proposed discharge plan after the date of publication of this notice during which comments may be submitted and a public hearing may be requested by any interested person. Requests for a public hearing shall set forth the reasons why a hearing should be held. A hearing will be held if the Director determines there is significant public interest.

If no public hearing is held, the Director will approve or disapprove the proposed plan(s) based on information available. If a public hearing is held, the Director will approve or disapprove the proposed plan(s) based on the information in the discharge plan application(s) and information submitted at the hearing.

GIVEN under the Seal of New Mexico Oil Conservation Commission at Santa Fe, New Mexico, on this 14th day of September, 1999.

STATE OF NEW MEXICO
OIL CONSERVATION DIVISION

Roger Candelaria
for LORI WROTENBERY, Director

SEAL

Legal No. 41762, published in The Daily Times, Farmington, New Mexico, Friday, September, 24, 1999.

NOTICE OF PUBLICATION

**STATE OF NEW MEXICO
ENERGY, MINERALS AND NATURAL RESOURCES DEPARTMENT
OIL CONSERVATION DIVISION**

Notice is hereby given that pursuant to New Mexico Water Quality Control Commission Regulations, the following discharge plan application(s) have been submitted to the Director of the Oil Conservation Division, 2040 South Pacheco, Santa Fe, New Mexico 87505, Telephone (505) 827-7131:

(GW-317) - EL PASO FIELD SERVICES COMPANY, David Bays, (505) 599-2256, 614 Reilly Avenue, Farmington, New Mexico 87401-2634, has submitted a discharge application for the Rattlesnake Canyon Compressor Station located in the NE/4 of Section 16, Township 32 North, Range 9 West, NMPM, San Juan County, New Mexico. Approximately 375 barrels per month of produced water, with a dissolved solids concentration ranging from 10,000 to 15,000 mg/l, is collected in closed steel tanks prior to transport off-site to an OCD approved disposal facility. Approximately 10 barrels per year of waste water from equipment washdown is collected in a double-walled underground sump prior to transport off-site to an OCD approved disposal facility. Ground water most likely to be affected in the event of an accidental discharge is at a depth of approximately 75 feet with a total dissolved solids concentration ranging from 48 mg/l to 52 mg/l. The discharge plan addresses how spills, leaks, and other accidental discharges to the surface will be managed.

Any interested person may obtain further information from the Oil Conservation Division and may submit written comments to the Director of the Oil Conservation Division at the address given above. The discharge plan application(s) may be viewed at the above address between 8:00 a.m. and 4:00 p.m., Monday through Friday. Prior to ruling on any proposed discharge plan application(s), the Director of the Oil Conservation Division shall allow at least thirty (30) days after the date of publication of this notice during which comments may be submitted and a public hearing may be requested by any interested person. Requests for a public hearing shall set forth the reasons why a hearing should be held. A hearing will be held if the Director determines there is significant public interest.

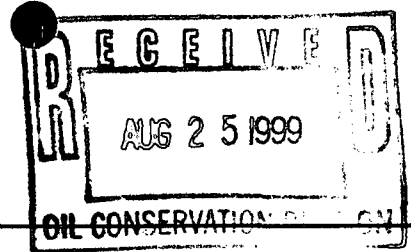
If no public hearing is held, the Director will approve or disapprove the proposed plan(s) based on information available. If a public hearing is held, the Director will approve or disapprove the proposed plan(s) based on the information in the discharge plan application(s) and information submitted at the hearing.

GIVEN under the Seal of New Mexico Oil Conservation Commission at Santa Fe, New Mexico, on this 14th day of September, 1999.

STATE OF NEW MEXICO
OIL CONSERVATION DIVISION


LORI WROTENBERY, Director

S E A L



August 23, 1999

Mr. Roger Anderson
New Mexico Oil Conservation Division
2040 S. Pacheco
Santa Fe, NM 87505

Dear Sirs:

On June 30, 1999, El Paso Field Services Co. (EPFS) submitted an application for a discharge plan for a proposed natural gas treating plant, The Rattlesnake Plant, in San Juan County, New Mexico. The \$50.00 filing fee was included with that application. EPFS is now planning to install the facility at a point approximately 3 miles north of the site identified in the initial application. The revised application showing the new plant location is attached.

If you need any additional information in order to process the discharge permit application, please call me at (505) 599-2256.

Sincerely yours,

A handwritten signature in cursive script that reads 'David Bays'.

David Bays, REM
Principal Environmental Scientist

cc: Mr. Denny Foust – NMOCD, Aztec, NM
Rattlesnake Reg. File

District I - (505) 393-6161

P. O. Box 1980

Hobbs, NM 88241-1980

District II - (505) 748-1283

311 S. First

Artesia, NM 88210

District III - (505) 334-6178

1000 Rio Brazos Road

Aztec, NM 87410

District IV - (505) 827-7131

New Mexico

Energy Minerals and Natural Resources Departments

Oil Conservation Division

2040 South Pacheco Street

Santa Fe, New Mexico 87505

(505) 827-7131

Revised 12/1/95

Submit Original

Plus 1 Copy

to Santa Fe

1 Copy to appropriate

District Office

DISCHARGE PLAN APPLICATION FOR SERVICE COMPANIES,
GAS PLANTS, REFINERIES, COMPRESSOR, AND CRUDE OIL PUMP STATIONS
(Refer to OCD Guidelines for assistance in completing the application)

☒ New

☐ Renewed

☐ Modification

1. Type: Natural Gas Purification Plant and Compressor Station
2. Operator: El Paso Field Services Co.
Address: 614 Reilly Avenue, Farmington, NM 87401
Contact Person: David Bays
3. Location: NE/4 Section 16 Township 32 North Range 9 West
4. Attach the name, telephone number and address of the landowner of the facility site.
5. Attach the description of the facility with a diagram indicating location of fences, pits, dikes and tanks on the facility.
6. Attach a description of all materials stored or used at the facility.
7. Attach a description of present sources of effluent and waste solids. Average daily quality and daily volume of waste water must be included.
8. Attach a description of current liquid waste and solid waste collection/treatment/disposal systems.
9. Attach a description of proposed modifications to existing collection/treatment/disposal systems.
10. Attach a routine inspection and maintenance plan to ensure permit compliance.
11. Attach a contingency plan for reporting and clean-up of spills or releases.
12. Attach geological/hydrological information for the facility. Depth to and quality of ground water must be included.
13. Attach a facility closure plan, and other information as is necessary to demonstrate compliance with any other rules, regulations, and/or orders.
14. CERTIFICATION

I hereby certify that the information submitted with this application is true and correct to the best of my knowledge and belief.

NAME: David Bays Title: Principal Environmental Scientist
Signature: David Bays Date: August 21, 1999

Item I

Indicate the major operational purpose of the facility. If the facility is a natural gas purification plant (CO₂ removal) and compressor station include the total combined site rated horsepower.

The Rattlesnake Canyon Treating Plant is a natural purification plant and gas compressor station owned and operated by El Paso Field Services Company (EPFS). The site will include the following equipment:

- Pigging operations.
- Two inlet scrubbers.
- Two skid-mounted Arial compressors with Caterpillar G3516 internal combustion engines.
- One gas cooler.
- One absorber tower.
- One skid mounted amine reboiler and still column unit.
- One coalescing filter separator.
- One 100 bbl water storage tank.
- One 100 bbl amine storage tank.
- Two 500 bbl produced water and hydrocarbon tanks.
- One 75 bbl skid drain tank.
- One 500 gallon engine lube oil tank.

The auxiliary equipment and tanks at the plant site will be installed, maintained, and operated by EPFS. EPFS will be responsible for the hauling and disposal of the waste oil, used glycol filters, wash down water, and produced water and hydrocarbon liquids.

The site rated compressor horsepower will be 2,370 HP (1,185 HP per unit).

Item 2

Name of operator or legally responsible party and local representative.

Legally Responsible Party

E. Randall West
El Paso Field Services Company
1001 Louisiana Street
Houston, TX 77002
PO Box 2511
Houston, TX 77252-2511
(713) 420-3534

Local Representative

Sandra D. Miller
El Paso Field Services Company
614 Reilly Avenue
Farmington, NM 87401-2634
(505) 599-2141

Operator

El Paso Field Services Company
614 Reilly Avenue
Farmington, NM 87401-2634
(505) 325-2841
1-800-203-1347
(24 hour emergency notification)

Item 3

Give a legal description of the location and county. Attach a large-scale topographic map.

San Juan County, New Mexico
Township 32 North, Range 9 West, NE/4 of Section 16
The topographic map is attached at Tab 1.

Item 4

Attach the name, telephone number and address of the landowner of the facility site.

State of New Mexico
310 Old Santa Fe Trail
Santa Fe, NM 87504-1148
(505) 827-5728

Item 5

Attach a description of the facility with a diagram indicating location of fences, pits, dikes and tanks on the facility.

A facility plot plan is attached at Tab 2.

Natural gas will enter the site from EPFS's lateral line via both underground and above ground piping. The gas will pass through the unit scrubbers, two Aerial compressors with Caterpillar engines and then to amine gas treating unit to absorb the CO₂. The gas will then be discharged into EPFS's lateral line.

The facility will also have weekly pigging operations. Condensate and field liquids from the pigging operations, unit scrubber, and separator will be piped underground to the condensate storage tanks.

Item 6

Attach a description of all materials stored or used at the facility.

Container	ID	Material	Form	Volume	Location	Containment
Closed steel AGT	Condensate tanks	Condensate & field liquids	liquid	2 each 500 bbl	200 feet away from facility components	Impermeable barrier surrounded by gravel, dirt berm
Closed steel BGT	Produced water and skid drain tank	Produced water, lube oil & wash down water	liquid	65 bbl	Near condensate tanks	Impermeable barrier surrounded by gravel, dirt berm
Closed steel AGT-elevated	Engine lube oil		liquid	500 gal	On compressor skid	Steel containment basin (compressor skid)
Closed steel AGT-elevated	Amine storage tank	Amine	liquid	100 bbl	Near condensate tanks	Impermeable barrier by gravel, dirt berm
Closed steel AGT	Water storage tank	Fresh water	liquid	100 bbl	Near condensate tanks	Near condensate tanks

AGT – above ground tank (non-pressurized)

BGT-below ground tank

Condensate will be produced during weekly pigging operations, and scrubber and separator operation at the facility. The condensate will be transferred via pipelines from the slug catcher, scrubber and separator to onsite condensate storage tank.

Skid drains will empty into a piping system that leads to a double-walled steel sump tank. The sump tank will collect used drips, leaks and spills of lube oil, rainwater falling on the compressor skid, and wash down water. The sump tank will be equipped with a manual leak detection system.

Lube oil will be supplied to the engine by an on-line reservoir on the compressor skid. Drips, leaks and spills of lube oil which occur on the compressor skid will be contained in the 65 bbl. below grade tank.

MSD sheets for materials at the site are maintained in EPFS's corporate office and are available upon request.

Item 7

Attach a description of present sources of effluent and waste solids. Average quality and daily volume of wastewater must be included.

Source	Type of Waste	Volume	Quality
Compressor via the skid drains	Spills, leaks and drips of engine oil, wash down water, and rain water collected on the skid	10 bbl/year	Used lube oil and water with detergents
Glycol dehydrator	Used filters	10 filters/month	No additives
Pigging operations, unit scrubber	Hydrocarbon condensate	1000 bbl/month	No additives
Hydrocarbon	Hydrocarbon and Produced water	500 bbl/month	No additives

According to *A Summary of the Regional Geology of the Permian and San Juan Basins of New Mexico* by Maureen Wilks, Ph.D., the total dissolved solids (TDS) of produced water in the San Juan Basin range from 8,000 ppm to 76,142 ppm. EPFS estimates TDS of produced water will range between 10,000 ppm to 15,000 ppm for Rattlesnake Plant Site.

Item 8

Attach a description of current liquid and solid waste collection/treatment/disposal procedures.

Type of Waste	Collection	Storage	Hauler	Disposal
Used oil, wash down water, rain water	Drained to an underground storage sump	Double-walled steel tank	Removed as generated by Dawn Trucking	EPFS, Kutz Hydrocarbon Recovery Facility
Used filters	Collected when replaced	Steel drum	Removed as generated by Waste Management	Crouch Mesa Landfill
Condensate, field liquids and produced water	Underground steel pipes	Steel tanks	Water and Hydrocarbons Dawn Trucking	Water-Basin Disposal; Hydrocarbons-Giant Industries

OCD Transporters/Disposal Facilities

Waste Management of Four Corners, 101 Spruce St., Farmington, NM (505) 327-6284

Dawn Trucking Company, 16 County Road 5860, Farmington, NM (505) 327-6314

Basin Disposal, Inc., 6 County Road 5046, Bloomfield, NM (505) 632-8936

Giant Industries, 111 County Road 4990, Bloomfield, NM (505) 632-8024

EPFS, Kutz Hydrocarbon Recovery Facility, East County Road 4900, Bloomfield, NM (505)632-2803

Exempt Waste

Only exempt wastes, such as water from condensate and field liquids, and produced water will be disposed in Class II injection wells (Basin Disposal).

Used glycol dehydrator filters will be put into 55 gallon drums, drained of all free liquids and will be collected as needed by Waste Management of Four Corners for disposal at the San Juan County Regional Landfill.

Non-Exempt, Non-Hazardous Waste

Waste oil will be collected as generated from the compressor unit and removed from the site by Dawn Trucking. New lube oil will be brought to the site by vendors as needed and stored in the on-line reservoir. Waste oil from the compressor will be taken to EPFS Kutz Hydrocarbon Recovery Facility for storage pending recycling. Engine coolant will be replaced once per year and removed from the site by the current contractor, Dow, for recycling.

Wash down water from the compressor engine will be collected as generated in an underground storage tank. Wash down water will be brought to the facility as needed. A portable washer is kept in the maintenance truck to wash the compressor engine. Wash down water will be taken to EPFS Kutz Hydrocarbon Recovery Facility for disposal.

Hazardous Waste

No RCRA-listed hazardous wastes will be generated at the facility.

Other Solid Waste

There will be no solid waste or miscellaneous trash disposal at the facility. All solid waste will be brought to the Waste Management dumpsters at the district offices.

Item 9

Attach a description of proposed modifications to existing collection/treatment/disposal systems.

No modifications to the facility are necessary to meet NMOCD requirements.

Item 10

Attach a routine inspection and maintenance plan to ensure permit compliance.

The facility is unmanned but will be inspected daily by an operator. Maintenance will be performed and records will be kept according to EPFS procedures. The integrity of any buried piping installed at the facility will be tested prior to commencement of operation and then re-tested once every five years.

Item 11

Attach a contingency plan for reporting and clean up of spills or releases.

EPFS will handle all spills and leaks immediately as required by company procedures and will report all spills and leaks according to the requirements of the State of New Mexico as found in NMOCD Rule 116 and WQCC Section 1203.

Item 12

Attach ecological/hydrological information for the facility. Depth to and quality of groundwater must be included.

The Rattlesnake Plant site is about 6 miles east and 3 miles north of Cedar Hill, New Mexico near the northern end of Box Canyon. Box Canyon connects with drainages leading to the San Juan River, approximately 14 miles south of the Plant site. Tab 1 shows the exact location of the site. The approximate site elevation is 6,900 feet above sea level (ASL). The USGS Mount Nebo, Anastacio Spring, and Archuleta, New Mexico 7.5 minute quadrangles shows all of these drainages as perennial.

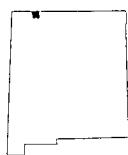
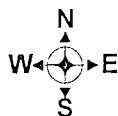
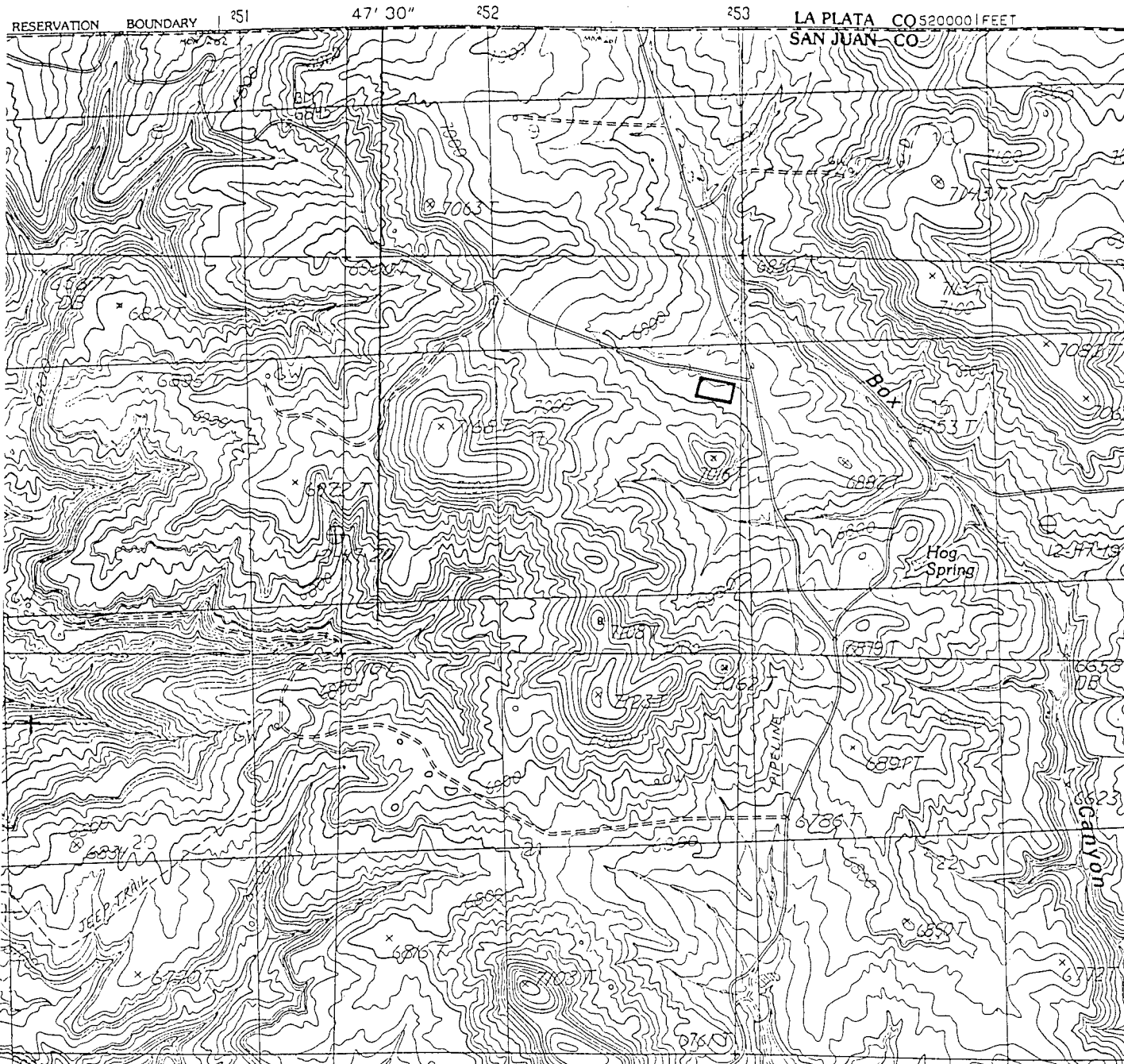
Soils in the plant area are derived from sandstone and shale from the San Jose formation. The major soil unit is the Travessilla Rock outcrop Weska. These units run from shallow to very deep and range from level to extremely steep, well drained soils that formed in the alluvium, residuum, and eolian material, and Rock outcrop on uplands.

Other mapped units include unconsolidated Quarternay Terrace and apron deposits, Quarternary alluvium and the overlying San Jose Formation.

Item 13

Attach a facility closure plan, and other information as is necessary to demonstrate compliance with any other OCD rules, regulations and/or orders,

All reasonable and necessary measures will be taken to prevent the exceedance of 20 NMAC 6.2-3103 water quality standards should EPFS choose to permanently close the facility. Closure measures will include removal or closure in place of all underground piping and equipment. All tanks will be emptied. No potentially toxic materials or effluents will remain on site. All potential sources of toxic pollutants will be inspected. Should contaminated soil be discovered, any necessary reporting under NMOCD Rule 116 and 20 NMAC 6.2.1203 will be made, and clean-up activities will commence. Postclosure maintenance and monitoring plans would not be necessary unless contamination is encountered.



Quadrangle Location

Mount Nebo, NM
7.5 Minute Series Quadrangle
Sec. 16, T32N, R9W, San Juan Co., NM
Prepared for: NMOCD Discharge Plan

ACKNOWLEDGEMENT OF RECEIPT
OF CHECK/CASH

I hereby acknowledge receipt of check No. dated 6/24/99,
or cash received on in the amount of \$ 50⁰⁰
from EL PASO NATURAL GAS COMPANY
for RATTLESNAKE GAS PLANT GW-317

Submitted by: WAYNE PRICE (DP No.) 9/13/99

Submitted to ASD by: Wayne Price Date: 9/13/99

Received in ASD by: Date:

Filing Fee ☒ New Facility ☒ Renewal ☐

Modification ☐ Other ☐ (specify)

Organization Code 521.07 Applicable FY 2000

To be deposited in the Water Quality Management Fund.

Full Payment ☐ or Annual Increment ☐

THIS MULTI-TONE AREA OF THE DOCUMENT CHANGES COLOR GRADUALLY AND EVENLY FROM DARK TO LIGHT WITH DARKER AREAS BOTH TOP AND BOTTOM

EL PASO NATURAL GAS COMPANY
P.O. Box 1492
El Paso, TX 79978

CITIBANK DELAWARE
A Subsidiary of Citicorp
One Penn's Way
New Castle, DE 19720
62-20/311

Pay Amount \$50.00***
Void After One Year

Date 06/24/1999

Pay *****FIFTY AND XX / 100 US DOLLAR*****

To The
Order Of

NEW MEXICO ENVIRONMENT DEPT
WATER QUALITY MANAGEMENT FUND
OCD ENVIRONMENTAL BUREAU
P O BOX 2088
SANTA FE, NM 87504-2088

H. Brent Austin

Authorized Signature

Check Date: 06/24/1999

EL PASO NATURAL GAS COMPANY
Refer Payment Inquires to (915) 496-5354

Check No. XXXXXXXXXX

Invoice Number	Invoice Date	Voucher ID	Gross Amount	Discount Available	Paid Amount
CKREQ990615	06/15/1999	00064716	50.00	0.00	50.00
RATTLESNAKE FAC. DISCHARGE FEE					
GW-317					

Vendor Number	Vendor Name		Total Discounts		
8000000573	NEW MEXICO ENVIRONMENT DEPT		\$0.00		

Check Number	Date		Total Amount	Discounts Taken	Total Paid Amount
07423411	06/24/1999		\$ 50.00	0.00	\$50.00