

1R - 124

# REPORTS

DATE:

2004

2004  
ANNUAL MONITORING REPORT

1R-124  
**MONUMENT 18**  
NW ¼ NW ¼ SECTION 7, TOWNSHIP 20 SOUTH, RANGE 37 EAST  
LEA COUNTY, NEW MEXICO  
PLAINS MARETING, L.P. EMS NUMBER: TNM MONUMENT 18-KNOWN

Prepared For:

**PLAINS MARKETING, L.P.**  
333 CLAY STREET, SUITE 1600  
HOUSTON, TEXAS 77002




Prepared By:

NOVA Safety and Environmental  
2057 Commerce Street  
Midland, Texas 79703

April, 2005

  
Rebecca Haskell  
Project Manager

  
for: Todd K. Choban  
Vice-President Technical Services

## TABLE OF CONTENTS

INTRODUCTION.....	1
SITE DESCRIPTION AND BACKGROUND INFORMATION.....	1
FIELD ACTIVITIES.....	1
LABORATORY RESULTS.....	2
SUMMARY.....	3
ANTICIPATED ACTIONS.....	3
LIMITATIONS.....	4
DISTRIBUTION.....	5

### FIGURES

Figure 1 – Site Location Map

Figure 2A – Inferred Groundwater Gradient Map February 10, 2004

2B – Inferred Groundwater Gradient Map May 5, 2004

2C – Inferred Groundwater Gradient Map August 25, 2004

2D – Inferred Groundwater Gradient Map December 1, 2004

Figure 3A – Groundwater Concentration and Inferred PSH Extent Map February 10, 2004

3B – Groundwater Concentration and Inferred PSH Extent Map May 5, 2004

3C – Groundwater Concentration and Inferred PSH Extent Map August 25, 2004

3D – Groundwater Concentration and Inferred PSH Extent Map December 1, 2004

### TABLES

Table 1 – Groundwater Elevation Data

Table 2 – Concentrations of BTEX in Groundwater

### APPENDICES

Appendix A – Release Notification and Corrective Action (Form C-141)

ENCLOSED ON DATA DISK

2004 Annual Monitoring Report

2004 Tables 1 and 2 – Groundwater Elevation and BTEX Concentration Data

2004 Figures 1, 2A-2D, and 3A-3D

Electronic Copies of Laboratory Reports

Historic Table 1 and 2 – Groundwater Elevation and BTEX Concentration Table

## INTRODUCTION

On behalf of Plains Marketing, L.P., (Plains), NOVA Safety and Environmental (NOVA) is pleased to submit this Annual Monitoring Report in compliance with the New Mexico Oil Conservation Division (NMOCD) letter of May 1998, requiring submittal of an Annual Monitoring Report by April 1 of each year. Beginning on May 29, 2004, project management responsibilities were assumed by NOVA, having previously been managed by Environmental Technology Group, Inc. (ETGI). The Monument 18 site, formally the responsibility of Enron Oil Trading and Transportation (EOTT) is now the responsibility of Plains. This report is intended to be viewed as a complete document with figures, attachments, tables and text. The report presents the results of the quarterly groundwater monitoring events conducted in calendar year 2004 only. For reference, the Site Location Map is provided as Figure 1. Cumulative tables and laboratory data are provided on the attached compact disk.

Groundwater monitoring was conducted during four (4) quarterly events in calendar year 2004 to assess the levels and extent of dissolved phase and Phase-Separated Hydrocarbon (PSH) constituents. The groundwater monitoring events consisted of measuring static water levels in the monitor wells, checking for the presence of PSH, and purging and sampling of each well exhibiting sufficient recharge. Monitor wells containing a thickness of PSH greater than 0.01 foot were not sampled.

## SITE DESCRIPTION AND BACKGROUND INFORMATION

No information with respect to the release date or volume of crude oil released and recovered is available as the release occurred while the pipeline was operated by Texas New Mexico Pipeline Company (TNM). The initial site investigation consisted of the installation of eight groundwater monitor wells (MW-1 through MW-8) and was conducted by other environmental consultants. NOVA installed two new monitor wells (MW-9 and MW-10) on November 04, 2004.

Currently there are ten monitor wells (MW-1 through MW-10) on this site. Recovery of PSH at the site is achieved using passive recovery and is monitored on a weekly basis.

## FIELD ACTIVITIES

Quarterly monitoring events for the reporting period were performed according to the following sampling schedule, which was approved by the NMOCD in correspondence dated April 28, 2004:

NMOCD APPROVED SAMPLING SCHEDULE			
Location	Schedule	Location	Schedule
MW-1	Quarterly	MW-6	Annually
MW-2	Annually	MW-7	Annually
MW-3	Quarterly	MW-8	Annually
MW-4	Quarterly	MW-9	Quarterly
MW-5	Semi-Annually	MW-10	Quarterly

The site monitor wells were gauged and sampled on March 08, May 25, August 31, and December 13, 2004. Monitor wells MW-9, and MW-10 were installed on November 04, 2004 and sampled on November 10, 2004. During each sampling event the monitor wells were purged of approximately three well volumes of water or until the wells were dry using a new rope and disposable polyethylene bailer or electrical Grundfos Pump. Groundwater was allowed to recharge and samples were obtained using disposable Teflon samplers. Water samples were collected in clean glass containers provided by the laboratory and placed on ice in the field. Purge water was collected in a polystyrene tank and disposed of by Key Energy utilizing a licensed disposal facility (NMOCD AO SWD-730).

Locations of the monitor wells and the inferred groundwater gradient, which were constructed from measurements collected during the four (4) quarterly monitoring events, are depicted on Figures 2A through 2D, the Inferred Groundwater Gradient Maps. Groundwater elevation data for 2004 is provided as Table 1. Historic groundwater elevation data beginning at project inception is enclosed on the attached data disk.

The most recent Groundwater Gradient Map, Figure 2D, indicates a general gradient of approximately 0.001 ft./ft. to the southeast. This is consistent with data presented on Figures 2A through 2C from earlier in the year. The corrected groundwater elevations ranged between 3524.15 to 3525.99 feet above mean sea level, in MW-5 on March 8, 2004 and in MW-6 on December 13, 2004, respectively.

A measurable thickness of PSH was measured in monitor wells MW-1, MW-3, and MW-4 during the reporting period. PSH thickness went from 2.73 feet in MW-1 in March 2004 to 0.81 feet by December 2004. PSH thickness in MW-3 went from 0.37 feet in March 2004 to a sheen by October 2004. PSH thickness in MW-4 went from 0.03 feet in March 2004 to 0.21 feet in September 2004 and back down to a sheen by October 2004. PSH data for the 2004 gauging events can be found in Table 1. Recovery of PSH at the site is achieved using passive recovery and is monitored on a weekly basis. The 2004 gauging data is provided in Table 1.

## **LABORATORY RESULTS**

Groundwater samples collected during the first three quarterly monitoring events were delivered to AnalySys Inc., Austin, Texas for determination of Benzene, Toluene, Ethylbenzene and Xylene (BTEX) constituent concentrations by EPA Method SW846-8260b. Fourth quarter sample analysis was performed by Trace Analysis, Inc., of Lubbock, Texas for determination of BTEX constituent concentrations by EPA Method SW846-8021b. The 2004 BTEX constituent concentrations are summarized on Table 2. Historical BTEX constituent concentrations and copies of the laboratory reports for 2004 are provided on the attached data disk. The quarterly groundwater sample results for benzene and BTEX concentrations are depicted on Figures 3A-3D.

Review of laboratory analytical results of the groundwater samples obtained during the 2004 monitoring period indicate that benzene and BTEX concentrations were below NMOCD regulatory standards in five (5) monitor wells. Benzene and BTEX concentrations were below regulatory standards in monitor well MW-4 in December and in monitor wells MW-9 and MW-

10 in November. Measurable thicknesses of PSH were detected in three (3) monitor wells during the annual monitoring period. Laboratory analytical results were compared to NMOCD regulatory limits based on the New Mexico groundwater standards found in section 20.6.2.3103 of the New Mexico Administrative Code.

## **SUMMARY**

This report presents the results of monitoring activities for the 2004 annual monitoring period. Currently, there are 10 groundwater monitor wells (MW-1 through MW-10) on-site. Recovery of PSH at the site is achieved using passive recovery and is monitored on a weekly basis. The most recent Groundwater Gradient Map, Figure 2D, indicates a general gradient of approximately 0.001 ft./ft. to the southeast.

As discussed above, three (3) monitor wells contained measurable PSH thicknesses in 2004. Throughout 2004 PSH amounts have decreased in thickness. In monitor well MW-1, the average PSH thickness in 2003 was 2.78 feet and during 2004 it decreased to 1.32 feet. The minimum thickness of PSH in monitor well MW-1 during 2003 was 2.72 feet and in 2004 it was 0.50 feet. PSH has taken a considerable decrease in thickness in monitor wells MW-3 and MW-4. Both monitor wells MW-3 and MW-4 have had measurable PSH thicknesses since project inception. However, there were no measurable thicknesses of PSH during the last quarter of 2004. Monitor wells MW-3 and MW-4 contained only a sheen during the last quarter of the reporting period.

As discussed above benzene and BTEX constituent concentrations are below NMOCD regulatory standards in five (5) monitor wells during 2004. Benzene and BTEX concentrations were below regulatory standards in monitor well MW-4 in December and in monitor wells MW-9 and MW-10 in November. There were three well locations that contained measurable amounts of PSH during the annual monitoring period and were not sampled during at least one sampling event.

The Release Notification and Corrective Action Form (C-141) is provided as Appendix A.

## **ANTICIPATED ACTIONS**

Quarterly monitoring and sampling will continue in 2005. Passive product recovery and gauging will continue on a weekly schedule and will be adjusted according to site conditions.

Plains is requesting permission from the NMOCD to plug and abandon monitor well MW-2 due to the following conditions.

- The regional groundwater gradient is southeast and gradient control along the southeast perimeter of the leak zone is provided by MW-5 and MW-8.
- MW-2 has not displayed concentrations of dissolved phase impact above the NMOCD Regulatory Limit in nineteen (19) consecutive quarters since 1999.

## LIMITATIONS

NOVA has prepared this Annual Monitoring Report to the best of its ability. No other warranty, expressed or implied, is made or intended.

NOVA has examined and relied upon documents referenced in the report and has relied on oral statements made by certain individuals. NOVA has not conducted an independent examination of the facts contained in referenced materials and statements. We have presumed the genuineness of the documents and that the information provided in documents or statements is true and accurate. NOVA has prepared this report, in a professional manner, using the degree of skill and care exercised by similar environmental consultants. NOVA also notes that the facts and conditions referenced in this report may change over time and the conclusions and recommendations set forth herein are applicable only to the facts and conditions as described at the time of this report.

This report has been prepared for the benefit of Plains. The information contained in this report, including all exhibits and attachments, may not be used by any other party without the express consent of NOVA and/or Plains.

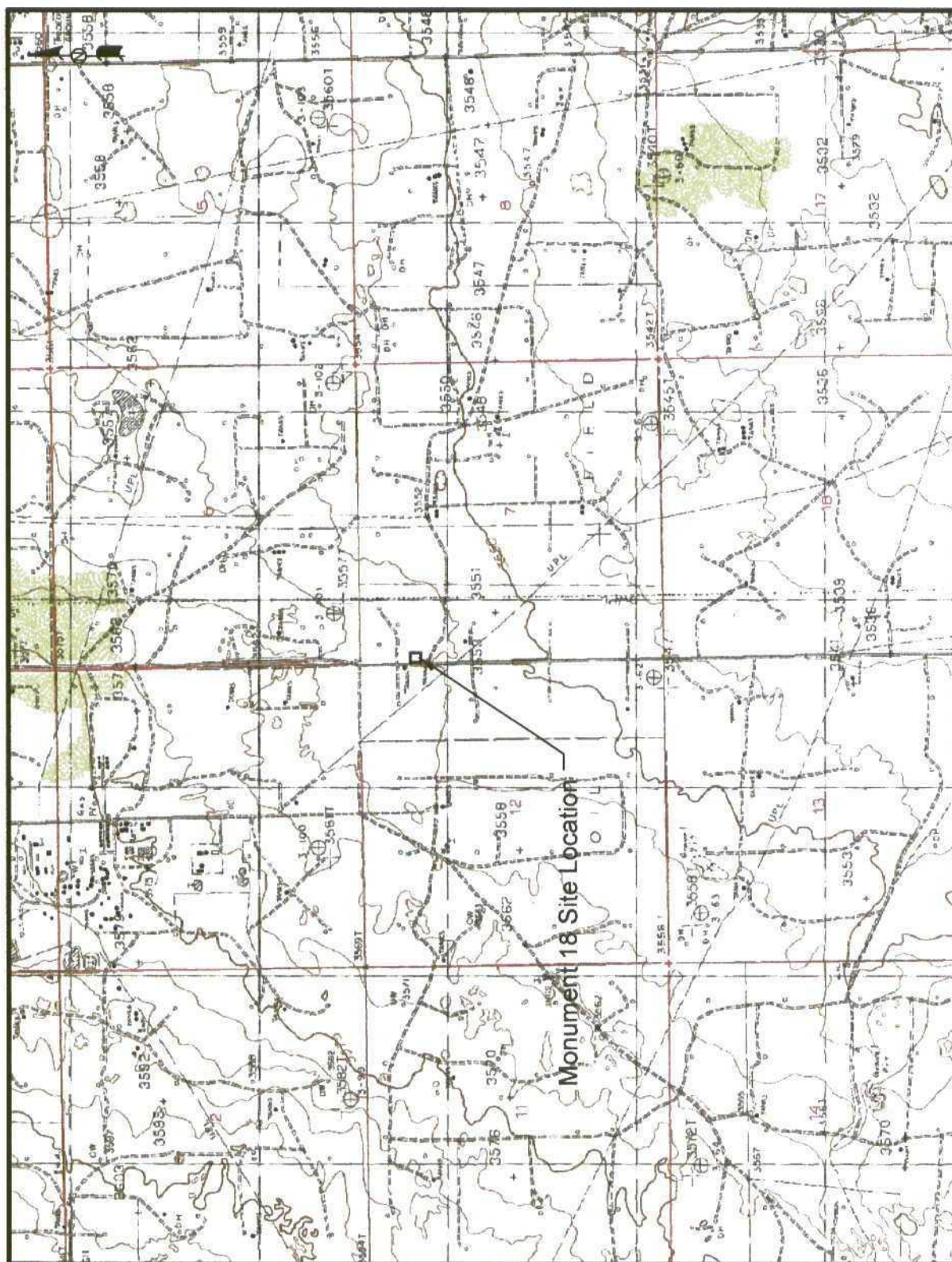


## DISTRIBUTION

- Copy 1      Ed Martin  
New Mexico Energy, Minerals and Natural Resources Department  
Oil Conservation Division  
1220 South St. Francis Drive  
Santa Fe, NM 87505
- Copy 2:     Paul Sheeley and Larry Johnson  
New Mexico Energy, Minerals and Natural Resources Department  
Oil Conservation Division, District 1  
1625 French Drive  
Hobbs, NM 88240
- Copy 3:     Camille Reynolds  
Plains Marketing, L.P.  
3112 Highway 82  
Lovington, NM  
cjreynolds@paalp.com
- Copy 4:     Jeff Dann  
Plains Marketing, L.P.  
333 Clay Street  
Suite 1600  
Houston, TX 77002  
jpdann@paalp.com
- Copy 5:     NOVA Safety and Environmental  
2057 Commerce Street  
Midland, TX 79703  
rhaskell@novatraining.cc

Copy Number:

## Figures



NW1/4 NW1/4 Sec 7 T20S R37E  
NE1/4 NE1/4 Sec 12 T20S R36E

**Figure 1**  
**Site Location Map**

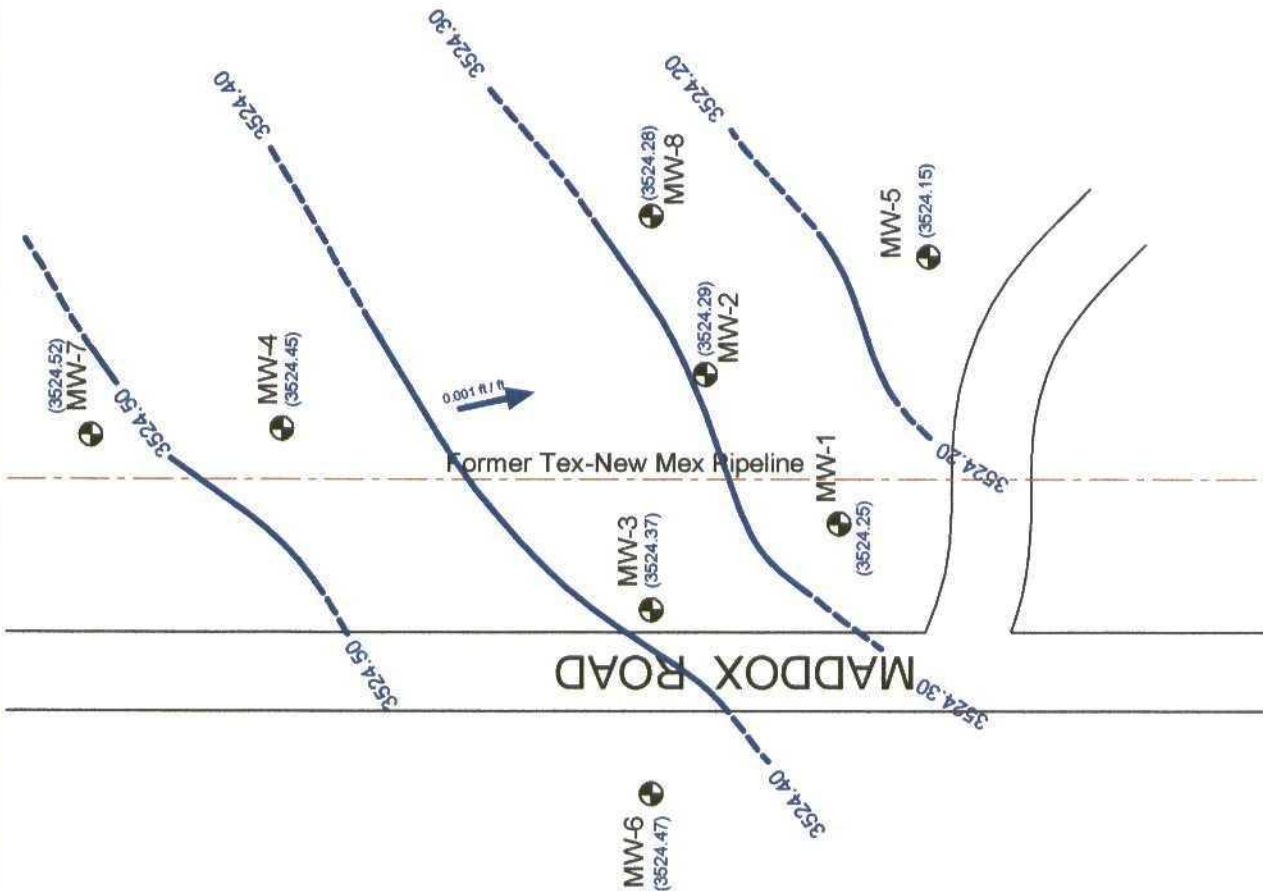
Plains Marketing, L.P.  
Monument 18  
Lea County, NM

## NOVA Safety and Environmental



Scale: 1" = .5 Miles	Prep By: CDS	Checked By: RNH
February 25, 2005	Section 7 Township 20S Range 37E	

Lat 12° 35' 30.0"N Long 103° 17' 55.9"W



NOTE:  
Contour Interval = 0.10'



Legend:

Monitor Well Locations

Ground Water Contour Lines

(3587.54) Groundwater Elevation

0.001 ft/ft Groundwater Gradient Direction and Magnitude

NG

Not Gauged

Figure 2A

Inferred Groundwater  
Gradient Map  
(3-8-04)

Plains Marketing, L.P.  
Monument 18

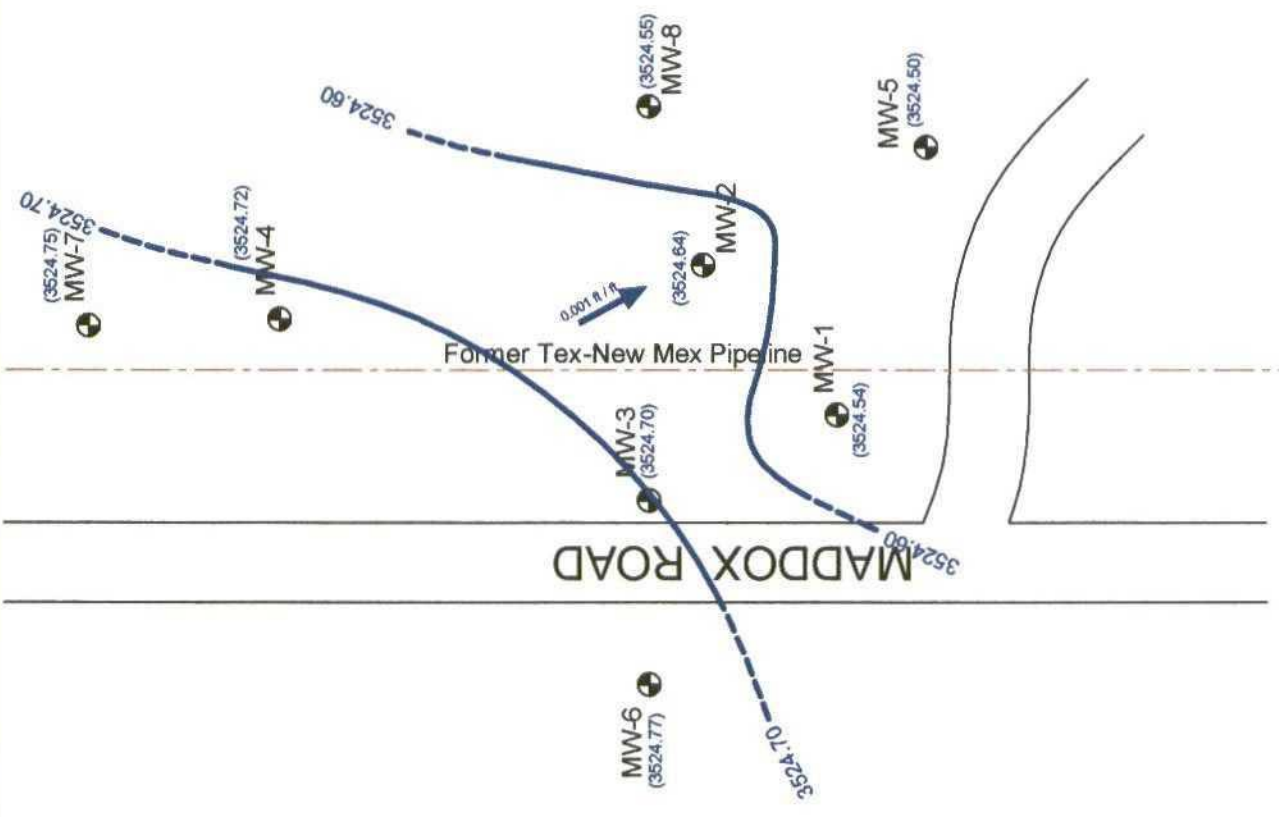
Lee County, NM





NOTE:

Contour Interval = 0.10'



Legend:

- Monitor Well Locations
- Ground Water Contour Lines

(3587.54) Groundwater Elevation  
0.001 ft/ft Groundwater Gradient Direction and Magnitude

NG Not Gauged

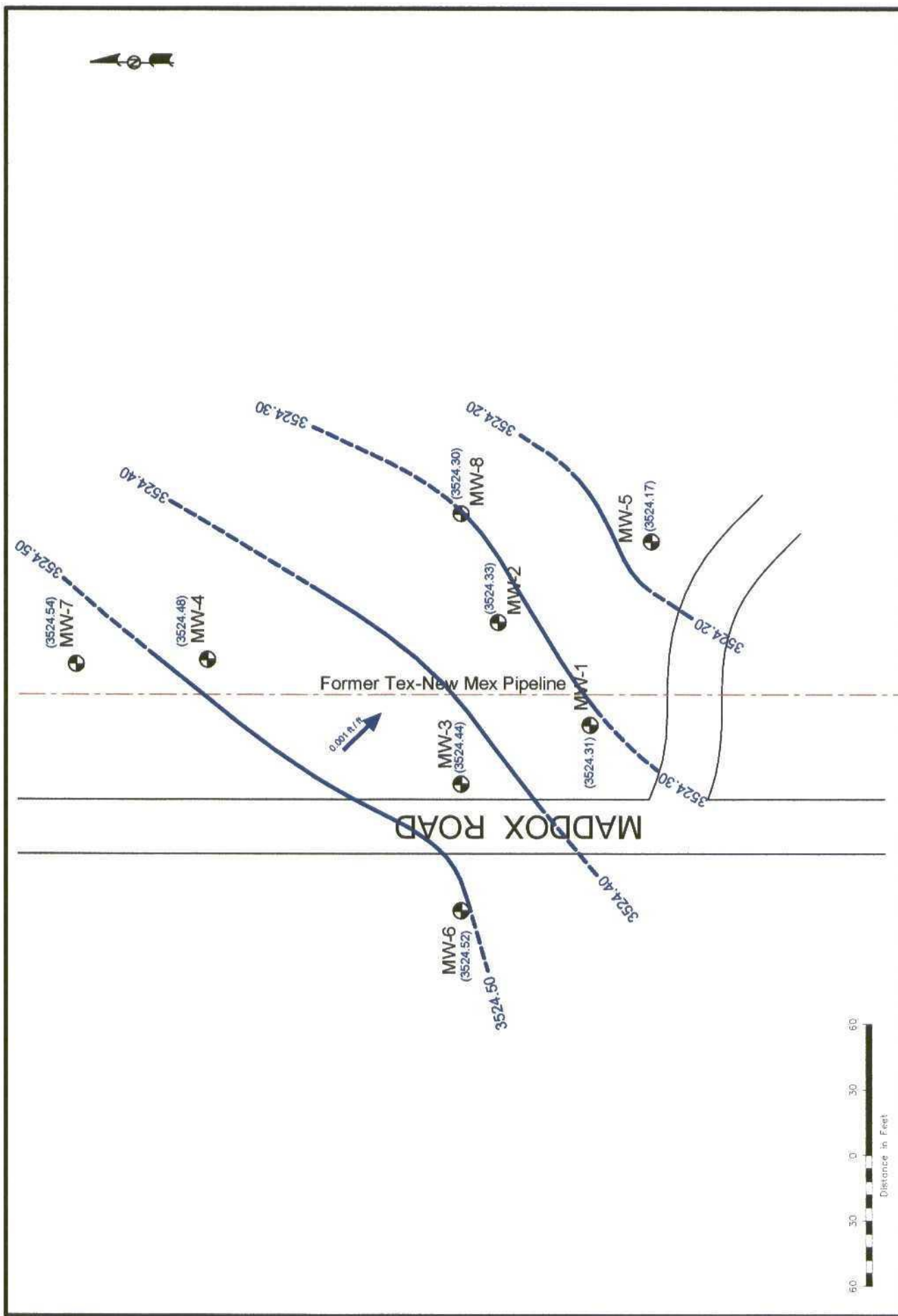
Figure 2B

Inferred Groundwater  
Gradient Map  
(3/25/04)  
Plains Marketing, L.P.  
Monument 18  
Lea County, NM

# NOVA Safety and Environmental



Scale: 1" = 60'  
Drawn By: JDM  
Prepared by: CDS  
February 24, 2005



**Figure 2C**  
Inferred Groundwater Gradient Map  
(8/31/04)

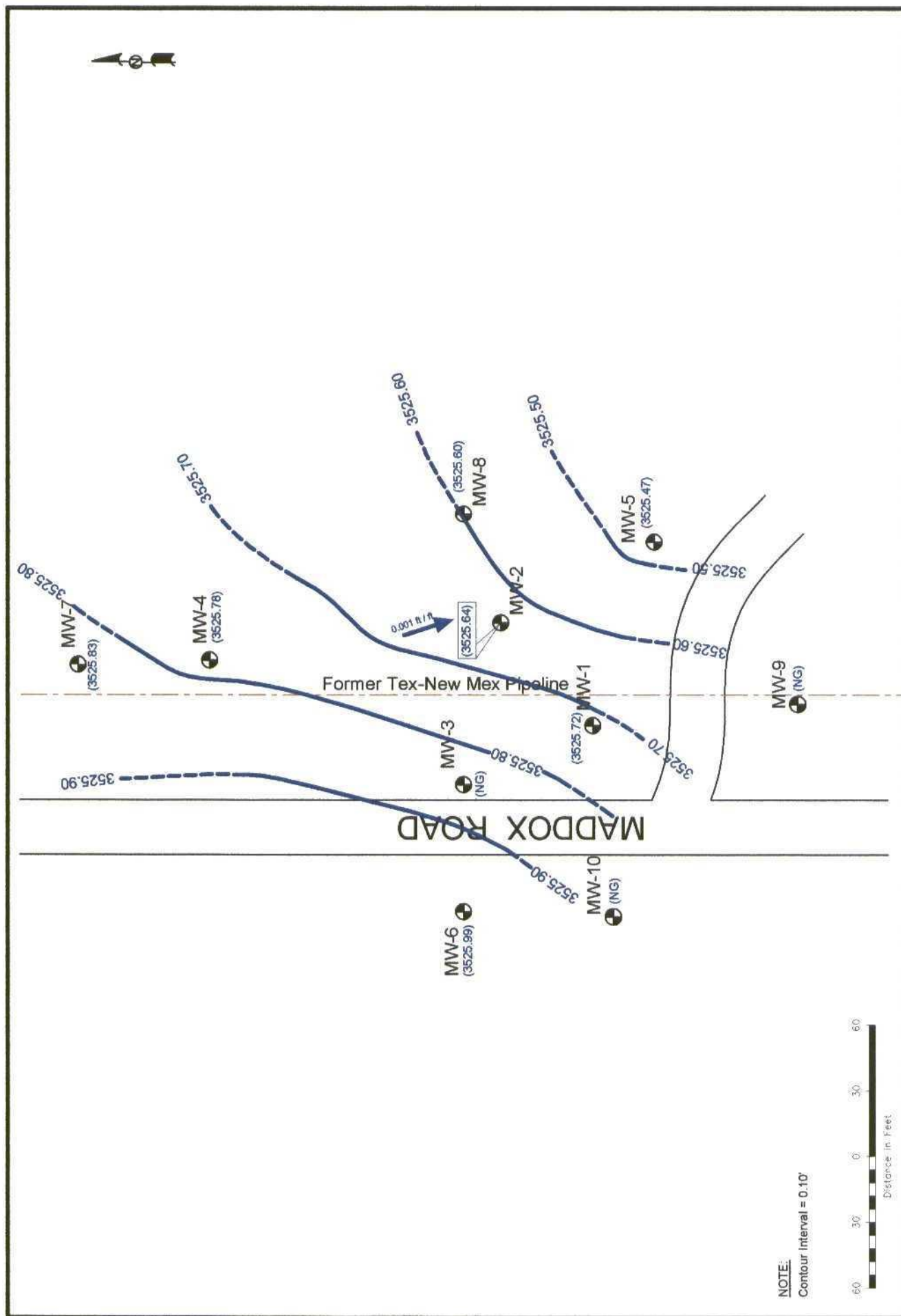
**NOVA Safety and Environmental**  
NOVA  
SAFETY AND ENVIRONMENTAL

**Plains Marketing, L.P.**  
Monument 18  
Lea County, NM

**Legend:**

- Monitor Well Locations
- Ground Water Contour Lines
- Groundwater Elevation (3587.54)
- Groundwater Gradient Direction and Magnitude (0.001 ft/ft)
- NG Not Gauged

**Scale:** 1" = 60'  
Drawn By: DPM | Prepared By: RTH  
March 10, 2005

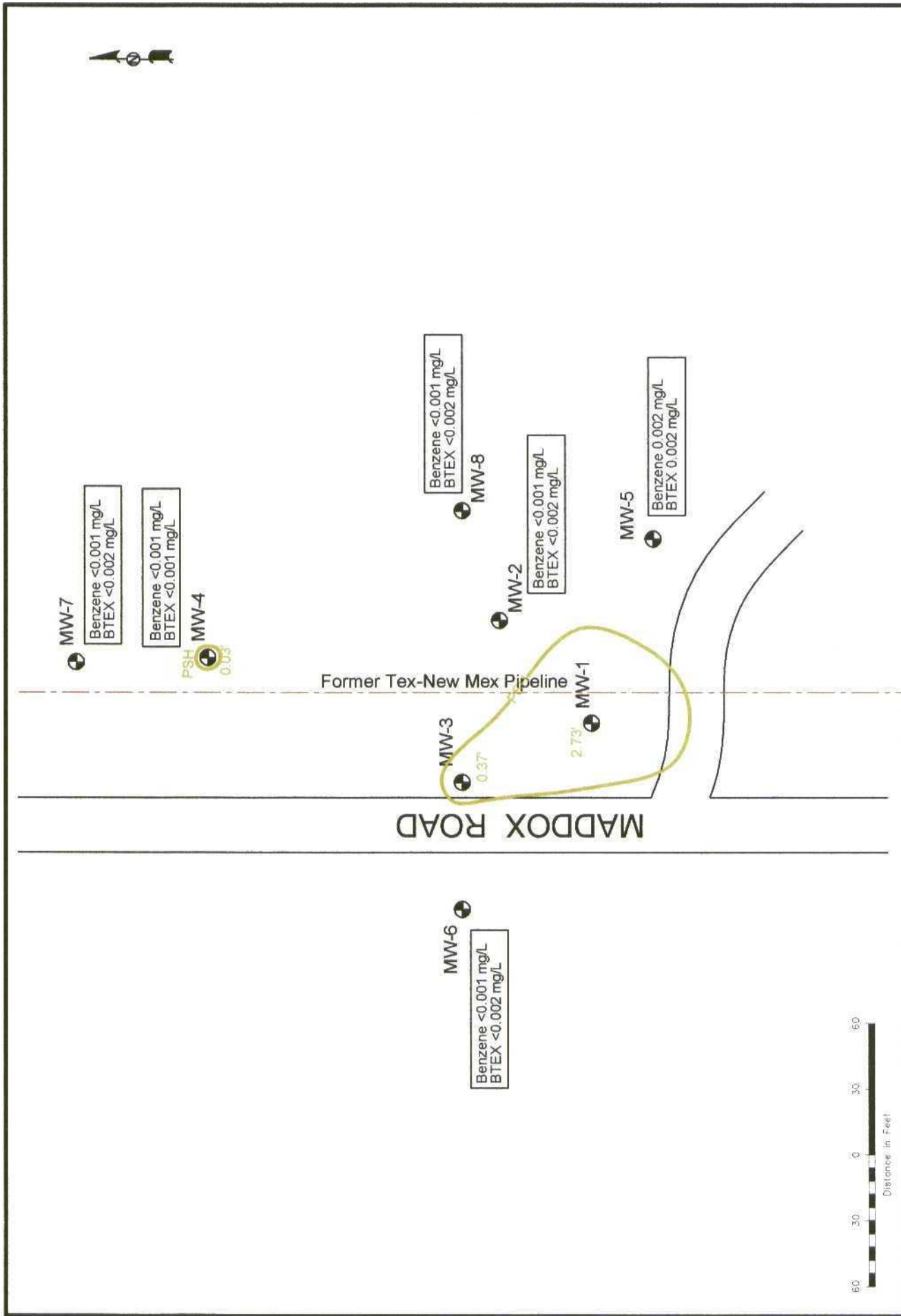


**Figure 2D**  
Inferred Groundwater  
Gradient Map  
(12/13/04)  
Plains Marketing, L.P.  
Monument 18  
Las County, NM

**NOVA Safety and Environmental**

**NOVA**  
Safety and Environmental

Scale: 1" = 80'  
Drawn By: DPM  
Prepared By: CCS  
February 24, 2005



**Figure 3A**  
Groundwater Concentration and Inferred PSH Extent Map (3/8/04)

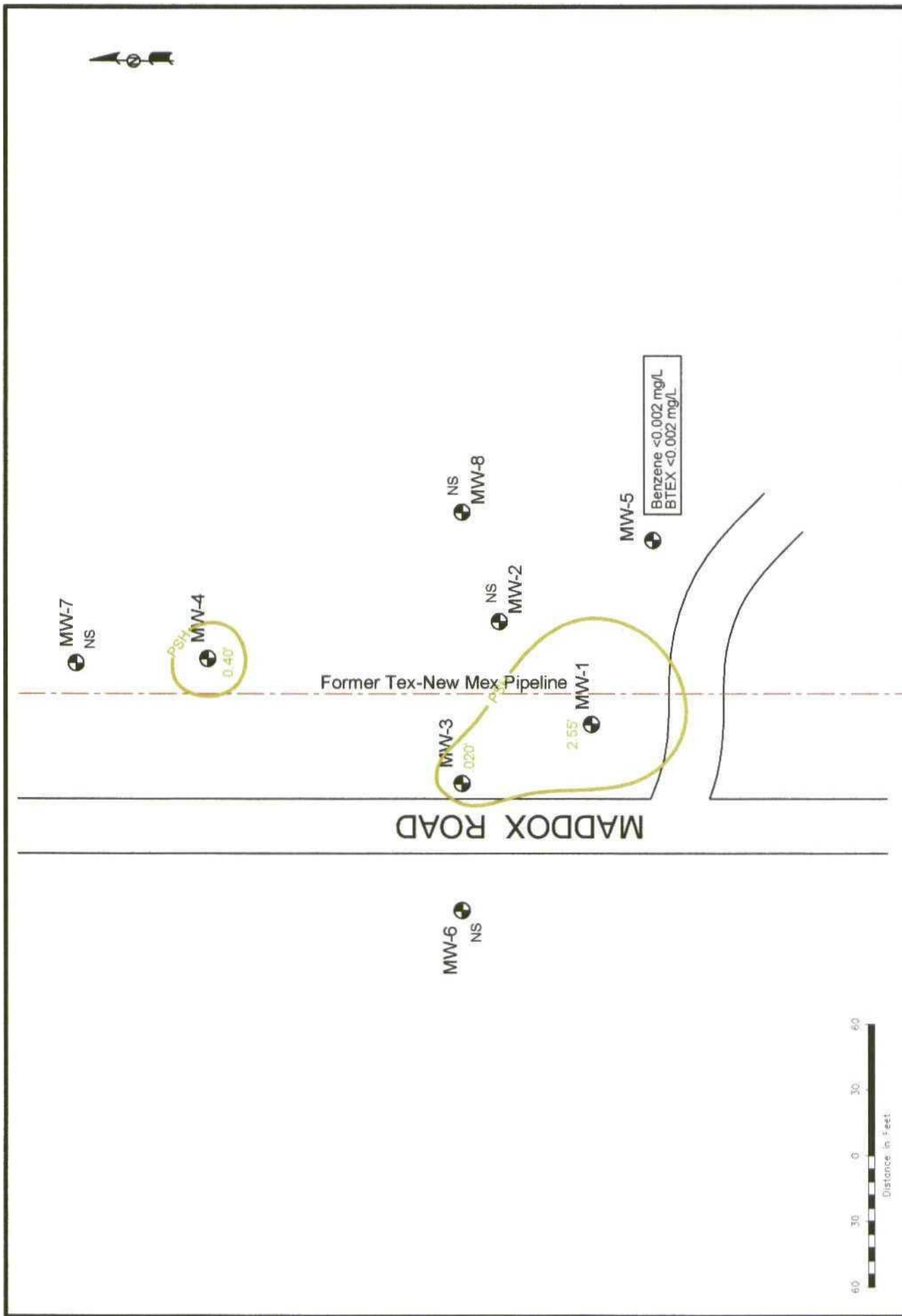
Plains Marketing, L.P.  
Monument 18  
Lea County, NM

**NOVA Safety and Environmental**

Scale: 1" = 60'    Drawn By: DPM    Prepared By: CDS  
February 22, 2005

**NOVA**  
Safety & Environmental





<b>Legend:</b> Monitor Well Location Inferred PSH Extent	<0.001 Constituent Concentration (mg/L) 2.55' Thickness of PSH (feet) NS Not Sampled	<b>Figure 3B</b> Groundwater Concentration and Inferred PSH Extent Map (5/25/04) Platte Marketing, L.P. Monument 18 Lea County, NM	<b>NOVA Safety and Environmental</b> 	
	Scale: 1" = 90' Drawn By: DPM Prepared By: CDS February 22, 2005			



MW-7  
NS

MW-4  
0.16

Former Tex-New Mex Pipeline

MADDOX ROAD

MW-6  
NS

MW-3  
0.36

MW-8  
NS

MW-2  
NS

MW-1  
2.70

MW-5  
NS



Distance in Feet

Legend:

Monitor Well Location

Inferred PSH Extent

<0.001 Constituent Concentration (mg/L)

2.42

Thickness of PSH (feet)

NS Not Sampled

Figure 3C  
Groundwater Concentration  
and Inferred PSH Extent Map  
(8/31/04)

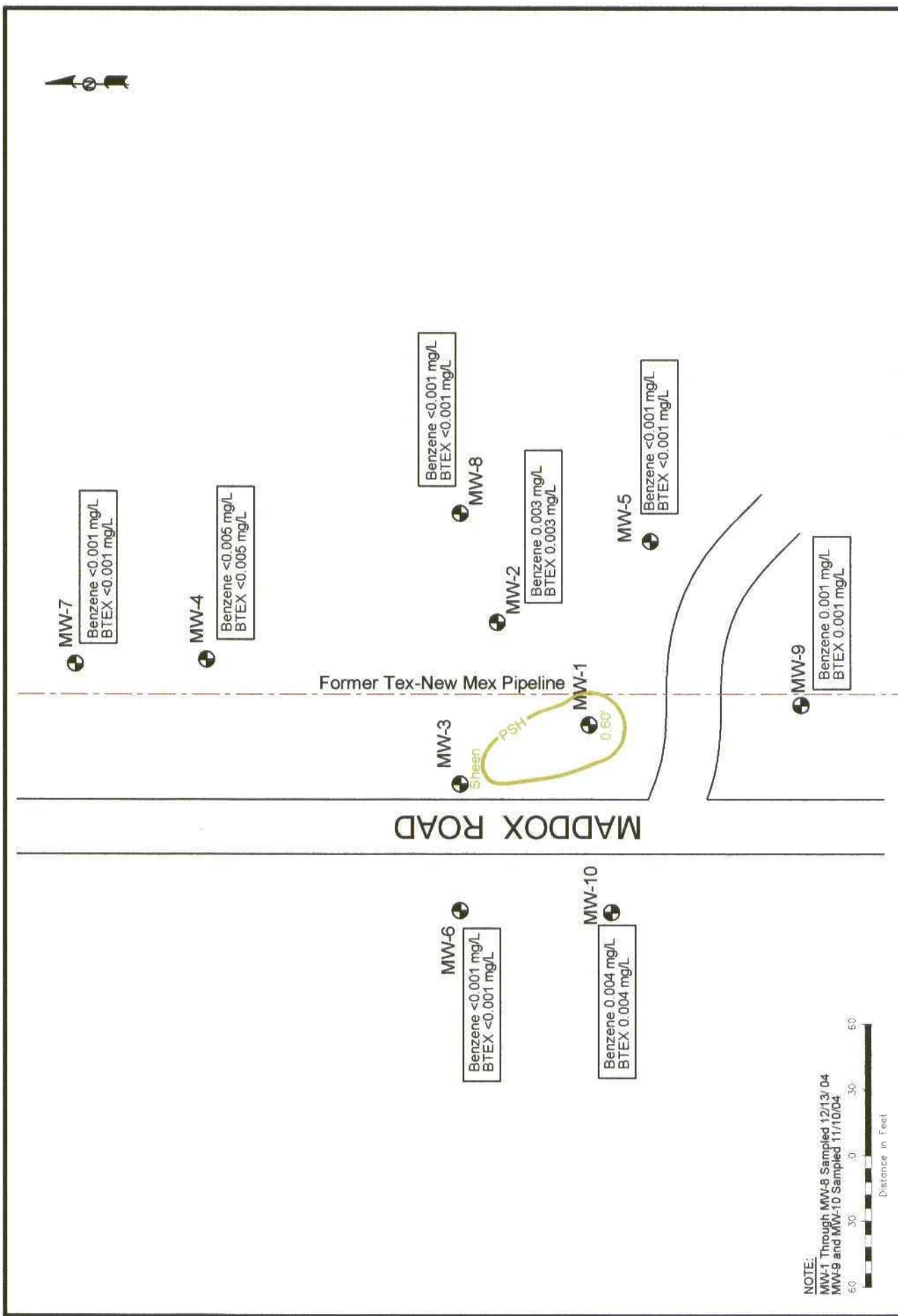
Plains Marketing, L.P.  
Monument 18  
Lea County, NM

NOVA Safety and Environmental



Scale: 1" = 60'  
Drawn By: DMM  
Prepared By: CDS

February 22, 2006



NOTE:  
 MW-1 Through MW-8 Sampled 12/13/04  
 MW-9 and MW-10 Sampled 11/10/04



Legend:

- Monitor Well Location
- Inferred PSH Extent

<0.001  
 2.42'

NG NS

Figure 3D  
 Groundwater Concentration  
 and Inferred PSH Extent Map  
 (11/10/04 and 12/13/04)  
 Plains Marketing, L.P.  
 Monument 18  
 Lea County, NM

NOVA Safety and Environmental



Scale: 1" = 60'  
 Drawn By: DPM  
 Prepared By: GDS  
 February 22, 2005

# Tables

**TABLE 1**  
**GROUNDWATER ELEVATION DATA**  
**FOR 2004**

**PLAINS MARKETING, L.P.**  
**MONUMENT 18**  
**LEA COUNTY, NEW MEXICO**

SAMPLE LOCATION	SAMPLE DATE	TOP OF CASING ELEVATION	DEPTH TO PRODUCT	DEPTH TO WATER	PSH THICKNESS	CORRECTED GROUND WATER ELEVATION
MW-1	03/08/04	3,558.71	34.05	36.78	2.73	3,524.25
	05/25/04	3,558.71	33.79	36.34	2.55	3,524.54
	08/31/04	3,558.71	34.00	36.70	2.70	3,524.31
	09/14/04	3,558.71	34.05	36.80	2.75	3,524.25
	09/21/04	3,558.71	34.14	36.22	2.08	3,524.26
	10/14/04	3,558.71	33.23	34.10	0.87	3,525.35
	10/21/04	3,558.71	33.30	34.15	0.85	3,525.28
	10/28/04	3,558.71	33.44	34.05	0.61	3,525.18
	11/04/04	3,558.71	33.40	34.40	1.00	3,525.16
	11/11/04	3,558.71	33.44	33.94	0.50	3,525.20
	11/17/04	3,558.71	33.43	34.55	1.12	3,525.11
	11/30/04	3,558.71	32.98	33.60	0.62	3,525.64
	12/07/04	3,558.71	32.91	33.60	0.69	3,525.70
	12/15/04	3,558.71	32.90	33.50	0.60	3,525.72
	12/13/04	3,558.71	32.90	33.50	0.60	3,525.72
	12/28/04	3,558.71	32.97	33.78	0.81	3,525.62
MW - 2	03/08/04	3,559.64	ND	35.35	0.00	3,524.29
	05/25/04	3,559.64	ND	35.00	0.00	3,524.64
	08/31/04	3,559.64	ND	35.31	0.00	3,524.33
	12/13/04	3,559.64	ND	34.00	0.00	3,525.64
MW-3	03/08/04	3,558.53	34.10	34.47	0.37	3,524.37
	05/25/04	3,558.53	33.80	34.00	0.20	3,524.70
	08/31/04	3,558.53	34.04	34.40	0.36	3,524.44
	09/14/04	3,558.53	34.07	34.33	0.26	3,524.42
	09/21/04	3,558.53	34.07	34.42	0.35	3,524.41
	10/14/04	3,558.53	sheen	33.04	0.00	3,525.49
	10/21/04	3,558.53	sheen	33.15	0.00	3,525.38
	10/28/04	3,558.53	sheen	33.16	0.00	3,525.37
	11/04/04	3,558.53	sheen	33.30	0.00	3,525.23
	11/11/04	3,558.53	sheen	33.30	0.00	3,525.23
	11/17/04	3,558.53	sheen	33.32	0.00	3,525.21
	11/30/04	3,558.53	sheen	32.75	0.00	3,525.78
	12/07/04	3,558.53	sheen	32.70	0.00	3,525.83
	12/15/04	3,558.53	sheen	32.60	0.00	3,525.93
	12/28/04	3,558.53	sheen	32.72	0.00	3,525.81
MW-4	03/08/04	3,558.14	33.69	33.72	0.03	3,524.45
	05/25/04	3,558.14	33.42	33.45	0.03	3,524.72
	08/31/04	3,558.14	33.64	33.80	0.16	3,524.48
	09/14/04	3,558.14	33.66	33.85	0.19	3,524.45
	09/21/04	3,558.14	33.66	33.87	0.21	3,524.45
	10/14/04	3,558.14	sheen	32.80	0.00	3,525.34
	10/21/04	3,558.14	sheen	32.80	0.00	3,525.34
	10/28/04	3,558.14	sheen	32.83	0.00	3,525.31
	11/04/04	3,558.14	sheen	32.87	0.00	3,525.27

**TABLE 1**  
**GROUNDWATER ELEVATION DATA**  
**FOR 2004**

PLAINS MARKETING, L.P.  
MONUMENT 18  
LEA COUNTY, NEW MEXICO

SAMPLE LOCATION	SAMPLE DATE	TOP OF CASING ELEVATION	DEPTH TO PRODUCT	DEPTH TO WATER	PSH THICKNESS	CORRECTED GROUND WATER ELEVATION
	11/11/04	3,558.14	sheen	32.87	0.00	3,525.27
	11/17/04	3,558.14	sheen	32.91	0.00	3,525.23
	11/30/04	3,558.14	sheen	32.47	0.00	3,525.67
	12/07/04	3,558.14	sheen	32.41	0.00	3,525.73
	12/13/04	3,558.14	ND	32.36	0.00	3,525.78
	12/15/04	3,558.14	sheen	32.36	0.00	3,525.78
	12/28/04	3,558.14	sheen	32.40	0.00	3,525.74
MW-5	03/08/04	3,560.07	ND	35.92	0.00	3,524.15
	05/25/04	3,560.07	ND	35.57	0.00	3,524.50
	08/31/04	3,560.07	ND	35.90	0.00	3,524.17
	12/13/04	3,560.07	ND	34.60	0.00	3,525.47
MW-6	03/08/04	3,557.64	ND	33.17	0.00	3,524.47
	05/25/04	3,557.64	ND	32.87	0.00	3,524.77
	08/31/04	3,557.64	ND	33.12	0.00	3,524.52
	12/13/04	3,557.64	ND	31.65	0.00	3,525.99
MW-7	03/08/04	3,558.65	ND	34.13	0.00	3,524.52
	05/25/04	3,558.65	ND	33.90	0.00	3,524.75
	08/31/04	3,558.65	ND	34.11	0.00	3,524.54
	12/13/04	3,558.65	ND	32.82	0.00	3,525.83
MW-8	03/08/04	3,559.30	ND	35.02	0.00	3,524.28
	05/25/04	3,559.30	ND	34.75	0.00	3,524.55
	08/31/04	3,559.30	ND	35	0.00	3,524.30
	12/13/04	3,559.30	ND	33.7	0.00	3,525.60
MW-9	11/08/04	3,559.94	ND	34.87	0.00	3,525.07
	11/10/2004	3,559.94	ND	34.87	0.00	3,525.07
MW-10	11/8/2004	3,558.06	ND	32.75	0.00	3,525.31
	11/10/2004	3,558.06	ND	32.77	0.00	3,525.29

\* Has not been surveyed as of date of this report

**TABLE 2**  
**CONCENTRATIONS OF BTEX IN GROUNDWATER**  
**FOR 2004**

PLAINS MARKETING, L.P.  
 MONUMENT 18  
 LEA COUNTY, NEW MEXICO

*All concentrations are reported in mg/L.*

SAMPLE LOCATION	SAMPLE DATE	SW 846-8012B, 5030				
		BENZENE	TOLUENE	ETHYL-BENZENE	m, p - XYLENES	o - XYLENE
Regulatory Limit		0.01 mg/L	0.75 mg/L	0.75 mg/L	0.62 mg/L	
MW-2	03/08/04	<0.001	<0.001	<0.001	<0.002	<0.001
	12/13/04	0.003	<0.001	<0.001	<0.001	
MW-4	12/13/04	<0.005	<0.005	<0.005	<0.005	
MW-5	03/08/04	0.002	<0.001	<0.001	<0.002	<0.001
	05/25/04	<0.001	<0.001	<0.001	<0.002	<0.001
	12/13/04	<0.001	<0.001	<0.001	<0.001	
MW-6	03/08/04	<0.001	<0.001	<0.001	<0.002	<0.001
	12/13/04	<0.001	<0.001	<0.001	<0.001	
MW-7	03/08/04	<0.001	<0.001	<0.001	<0.002	<0.001
	12/13/04	<0.001	<0.001	<0.001	<0.001	
MW-8	03/08/04	<0.001	<0.001	<0.001	<0.002	<0.001
	12/13/04	<0.001	<0.001	<0.001	<0.001	
MW-9	11/10/04	0.001	<0.001	<0.001	<0.001	
MW-10	11/10/04	0.004	<0.001	<0.001	<0.001	

# Appendices



Appendix A  
Notification of Release and Corrective  
Action

District I  
1625 N. French Dr., Hobbs, NM 88240  
District II  
1301 W. Grand Avenue, Artesia, NM 88210  
District III  
1000 Rio Brazos Road, Aztec, NM 87410  
District IV  
1220 S. St. Francis Dr., Santa Fe, NM 87505

State of New Mexico  
Energy Minerals and Natural Resources

Oil Conservation Division  
1220 South St. Francis Dr.  
Santa Fe, NM 87505

Form C-141  
Revised October 10, 2003

Submit 2 Copies to appropriate  
District Office in accordance  
with Rule 116 on back  
side of form

**Release Notification and Corrective Action**

**OPERATOR**

☒ Initial Report ☐ Final Report

Name of Company	Plains Pipeline, LP	Contact:	Camille Reynolds
Address:	3705 E. Hwy 158, Midland, TX 79706	Telephone No.	505-441-0965
Facility Name	Monument # 18	Facility Type:	Pipeline
Surface Owner:	Jim B Cooper	Mineral Owner	Lease No.

**LOCATION OF RELEASE**

Unit Letter	Section	Township	Range	Feet from the	North/South Line	Feet from the	East/West Line	County
D	7	20S	37E					Lea

Latitude 32 degrees 35' 30.0" Longitude 103 degrees 17' 55.9"

**NATURE OF RELEASE**

Type of Release:	Volume of Release:	Volume Recovered
Source of Release:	Date and Hour of Occurrence Unknown	Date and Hour of Discovery
Was Immediate Notice Given? Yes <input type="checkbox"/> No <input type="checkbox"/> Not Required	If YES, To Whom?	
By Whom?	Date and Hour	
Was a Watercourse Reached? <input type="checkbox"/> Yes <input checked="" type="checkbox"/> No	If YES, Volume Impacting the Watercourse.	

If a Watercourse was Impacted, Describe Fully.\*

Describe Cause of Problem and Remedial Action Taken.\*

Describe Area Affected and Cleanup Action Taken.\*

**NOTE: Texas-New Mexico Pipeline was the owner/operator of the pipeline system at the time of the release, initial response information is unavailable.**

I hereby certify that the information given above is true and complete to the best of my knowledge and understand that pursuant to NMOCD rules and regulations all operators are required to report and/or file certain release notifications and perform corrective actions for releases which may endanger public health or the environment. The acceptance of a C-141 report by the NMOCD marked as "Final Report" does not relieve the operator of liability should their operations have failed to adequately investigate and remediate contamination that pose a threat to ground water, surface water, human health or the environment. In addition, NMOCD acceptance of a C-141 report does not relieve the operator of responsibility for compliance with any other federal, state, or local laws and/or regulations.

Signature:		<b><u>OIL CONSERVATION DIVISION</u></b>	
Printed Name: Camille Reynolds		Approved by District Supervisor:	
Title: Remediation Coordinator	Approval Date:	Expiration Date:	
E-mail Address: cjreynolds@paalp.com	Conditions of Approval:		Attached <input type="checkbox"/>
Date: 3/21/2005	Phone: (505)441-0965		

\* Attach Additional Sheets If Necessary