

1R - 268

**ENFORCEMENT**

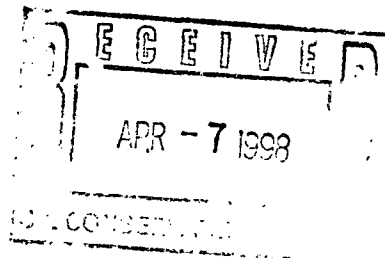
**DATE:**

1998



**Tipperary**  
CORPORATION

633 Seventeenth Street  
Suite 1550  
Denver, Colorado 80202



April 2, 1998

**CERTIFIED MAIL**

Mr. William C. Olson  
New Mexico Oil Conservation Division  
2040 South Pacheco  
Santa Fe, NM 87505

**RE: Progress Report  
Tatum Pit Closure Project  
Lea County, NM**

Dear Mr. Olson:

Please find enclosed additional results from our monitor wells in the subject project area. These results are from water samples taken on March 23, 1998. The total BTEX concentrations have declined significantly from the December 1997 sample results. We are currently planning to analyze water samples quarterly from the project monitor wells.

If you have any questions, please call me at (303) 293-9379.

Very truly yours,

Larry G. Sugano  
Vice President - Engineering

cc: Wayne Price, NMOCD Hobbs Office

Enclosure





**Executive Summary  
Tipperary Corporation  
Tatum Pit Closure Project  
March, 1998 Well Sampling**

**Procedures**

On March 23, 1998, Mr. Vic Vice, Tipperary Production Foreman, sampled the fluid contents of twenty-three monitoring wells in accordance with WEQP-76. The samples were delivered the next day to Environmental Labs of Texas and results provided to Whole Earth Environmental on March 26, 1998. Analysis methods and QA / QC data are provided on the laboratory report.

Whole Earth prepared various spreadsheets and graphs comparing the results to those of two prior sampling events.

**Results**

The total BTEX concentrations within the monitoring wells are shown to decline by an average of 20% per quarter. There was a 39% increase in the number of wells having all individual BTEX compound concentrations within WQCC standards. Though benzene remains the principal contaminant, the benzene concentrations were reduced by an average of 31% from the December sampling indicating that the "slug" resultant from the closure activities is now passing the monitoring perimeter.

**Conclusions**

The process of natural attenuation is demonstrated to be working. In June one and possibly two pit sites should be considered for final closure as it is expected that they will have shown four consecutive quarters of BTEX concentrations falling below New Mexico WQCC standards.

The construction of any additional delineation wells is not recommended at this time. One additional sampling round should provide us with enough statistical data to forecast which wells (if any) will require further testing.



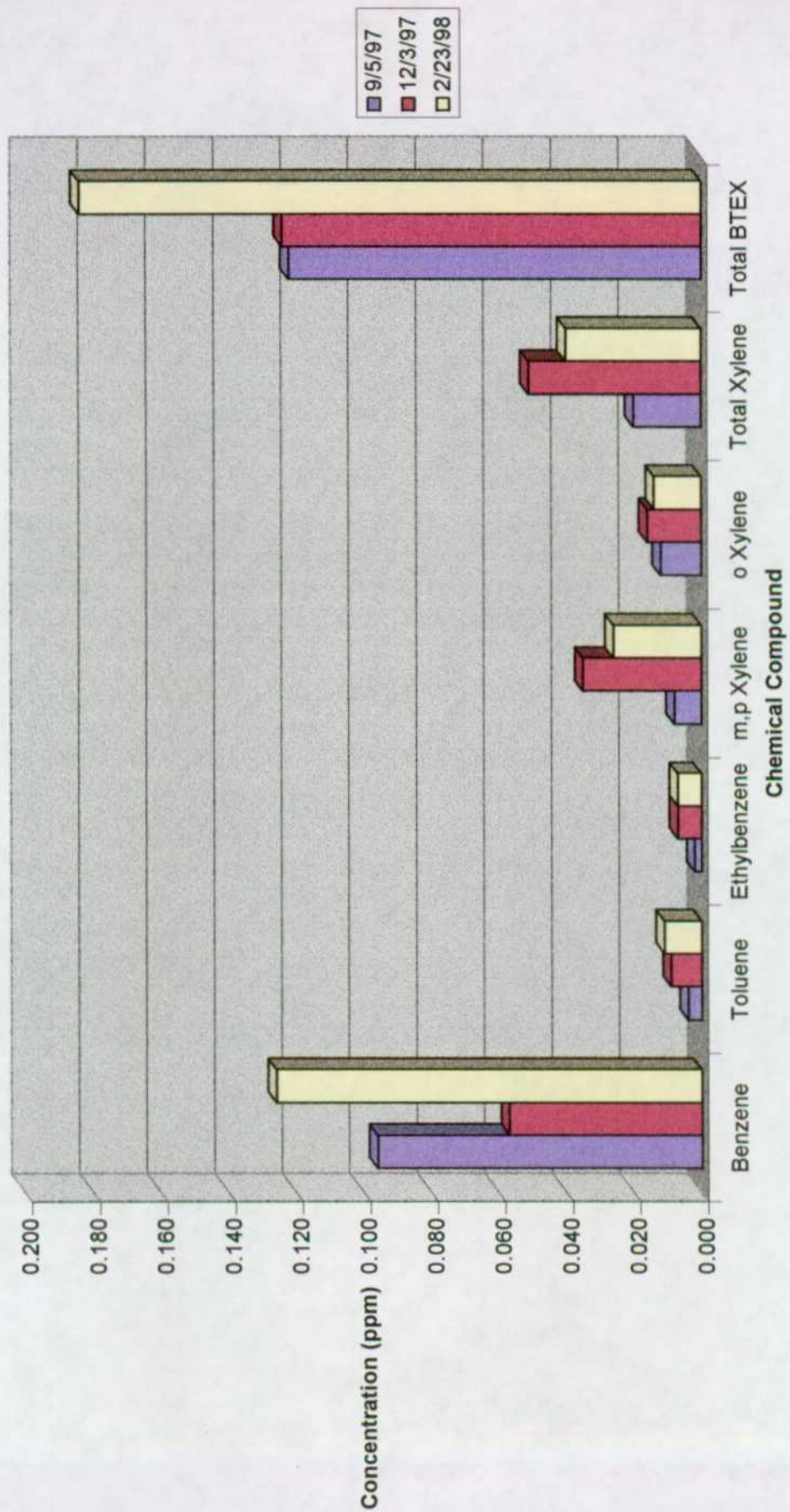
**Tipperary Corporation  
Sampling Instructions  
June 1, 1998 Sampling Round**

1. Sample Monitor Wells # 1-24 as performed on 3/23/98 sampling round.
2. Sample Iva COM source well for BTEX. If results are acceptable, we will then immediately test for PAH's. If PAH results are acceptable, we will request formal closure from the State. *(The State may require additional witnessed sampling for final closure).*
3. Sample Vera for PAH's. Use 1 liter amber jar with no preservatives for PAH and 1 liter clear jar with H<sub>2</sub>SO<sub>4</sub> preservative for metals in addition to your normal BTEX sample vial. If PAH's are acceptable, we will request immediate closure. *(PAH & RCRA 8 metals were all within limits on 9/5/97 sampling).*
4. Save G.S. State monitor well # 12 for last. Pump well bore for at least 30 minutes in an attempt to remove all of the free product from the sample. If free product is still present, forward the sample to the lab anyway with instructions to additionally run TPH analysis.

**Monitor Well # 11  
Sohio State "A"  
Sampling Results**

Lab #	12484	13132	14067
Sample Date	9/5/97	12/3/97	2/23/98
Benzene	0.096	0.057	0.126
Toluene	0.004	0.009	0.011
Ethylbenzene	0.002	0.007	0.007
m,p Xylene	0.008	0.035	0.026
o Xylene	0.012	0.016	0.014
Total Xylene	0.020	0.051	0.04
Total BTEX	0.122	0.124	0.184

# Monitor Well # 11

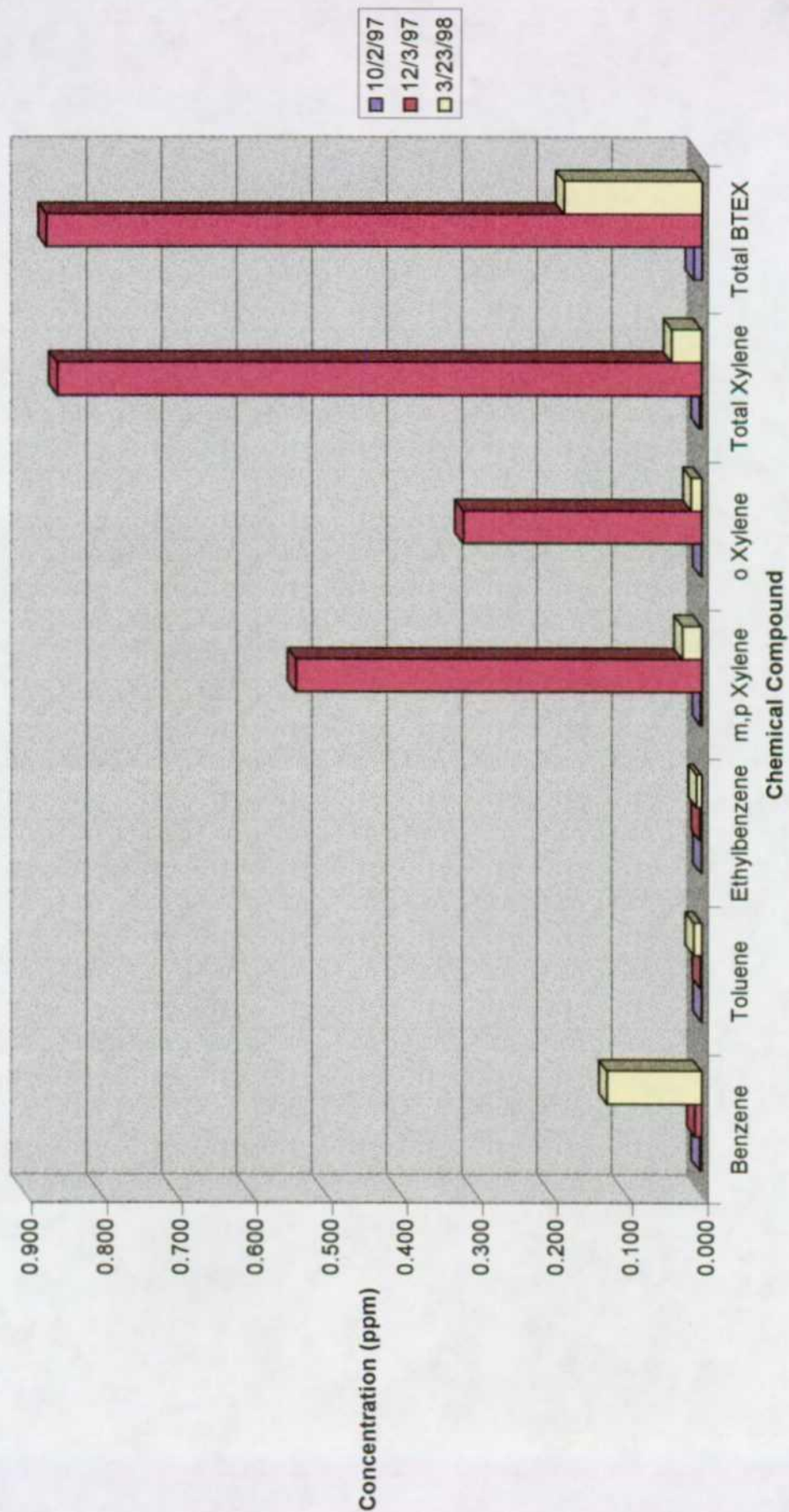


Monitor Well # 19  
 Sohio State "A"  
 Sampling Results

Lab. #	12725	13189	14067
Sample Date	10/2/97	12/3/97	3/23/98
Benzene	0.003	0.009	0.126
Toluene	0.001	0.002	0.011
Ethylbenzene	0.001	0.003	0.007
m,p Xylene	0.002	0.541	0.026
o Xylene	0.001	0.318	0.014
Total Xylene	0.003	0.859	0.04
Total BTEX	0.011	0.873	0.184



# Monitor Well # 19





Monitor Well # 20  
 Sohio State "A"  
 Sampling Results

Lab. #	12726	13190	14054
Sample Date	10/2/97	12/3/97	3/23/98
Benzene	0.385	0.284	0.539
Toluene	0.009	0.005	0.016
Ethylbenzene	0.010	0.008	0.014
m,p Xylene	0.016	0.044	0.075
o Xylene	0.009	0.004	0.014
Total Xylene	0.025	0.048	0.089
Total BTEX	0.454	0.345	0.658

# Monitor Well # 20

