

3R - 196

REPORTS

DATE:

2003

Certified Mail: #7002 0510 0000 0307 7497

February 26, 2004

RECEIVED

Mr. William C. Olson
New Mexico Oil Conservation Division
1220 St. Francis Dr.
Santa Fe, NM 87504

MAR 03 2004

**Oil Conservation Division
Environmental Bureau**

RE: 2003 Pit Project Annual Groundwater Report

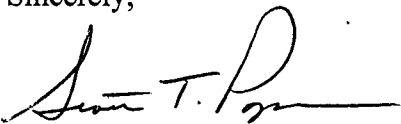
Dear Mr. Olson:

In accordance with reporting requirements, El Paso Field Services (EPFS) has enclosed annual reports for the 24 remaining groundwater impacted sites that were identified during our pit closure project of 1994 / 1995.

EPFS has organized the 24 Annual Reports (Volumes 1, 2 and 3) by land type. Volume 1 contains Annual Reports for sites found on Federal land. Volume 2 contains Non Federal sites and Volume 3 contains sites on Navajo land. Of the 24 reports submitted, EPFS is requesting closure of one site located on Navajo lands (Jennepah #1). EPFS understands closure of groundwater sites on Navajo lands falls under jurisdiction of the Navajo Nation Environmental Protection Agency and original documents have been submitted to them for review. Other Navajo sites are included in the report for your information.

If you have any questions concerning the enclosed reports, please call me at (505) 599-2124.

Sincerely,



Scott T. Pope P.G.
Senior Environmental Scientist

xc: Mr. Denny Foust, NMOCD, Aztec - w / enclosures; **Certified Mail # 7002 0510 0000 0307 7473**
Mr. Bill Liesse, BLM - w / enclosures (federal sites only), **Certified Mail # 7002 0510 0000 0307 7466**

**2003 ANNUAL GROUNDWATER REPORT
FEDERAL SITES VOLUME I
EL PASO FIELD SERVICES**

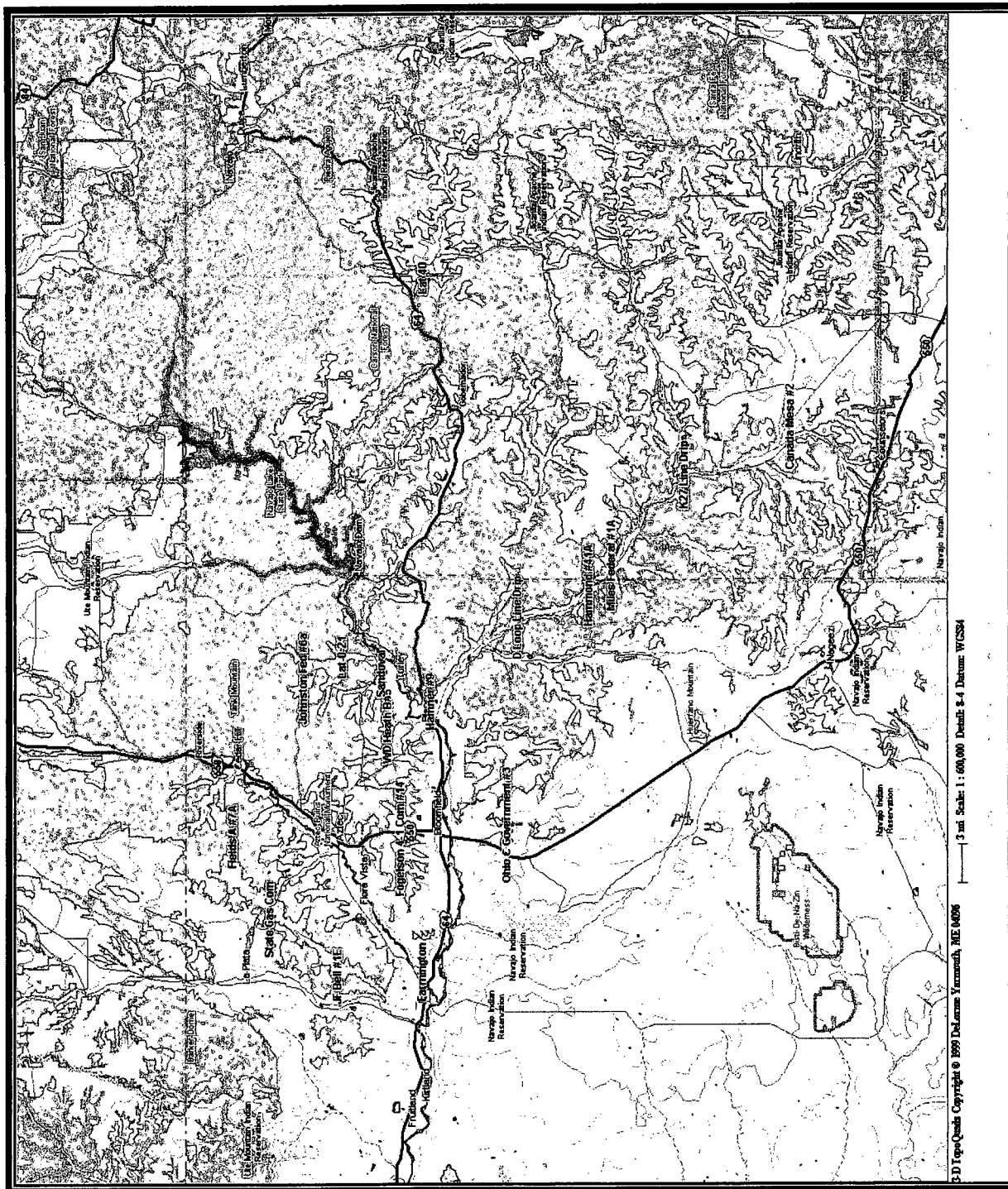
TABLE OF CONTENTS

METER or LINE ID	SITE NAME	TOWNSHIP	RANGE	SECTION	UNIT
89961	Fields A#7A	32N	11W	34	E
89232	Johnston Fed #6A	31N	09W	35	F
94715	James F. Bell #1E	30N	13W	10	P
89620	Sandoval GC A #1A	30N	09W	35	C
LD151	Lat 0-21 Line Drip	30N	09W	12	O
73220	Fogelson 4-1 Com. #14	29N	11W	4	P
97213	Hamner #9	29N	09W	20	A
LD174	LAT L 40	28N	04W	13	H
89894	Hammond #41A	27N	08W	25	O
94810	Miles Fed 1A	26N	07W	5	F
LD072	K27 LD072	25N	06W	4	E
87640	Canada Mesa #2	24N	06W	24	I



MWH
MONTGOMERY WATSON HARZA

Federal Groundwater Site Map



LIST OF ACRONYMS

B	benzene
btoc	below top of casing
E	ethylbenzene
EPFS	El Paso Field Services
ft	foot/feet
GWEL	groundwater elevation
ID	identification
MW	monitoring well
PSH	phase-separated hydrocarbons
NMWQCC	New Mexico Water Quality Control Commission
T	toluene
TOC	top of casing
NA	not applicable
NE	not established
NM	not measured
NMOCD	New Mexico Oil Conservation Division
NS	not sampled
ORC	oxygen-releasing compound
ppb	parts per billion
µg/L	micrograms per liter
X	total xylenes

**EPFS GROUNDWATER SITES
2003 ANNUAL GROUNDWATER REPORT**

**James F. Bell #1E
Meter Code: 94715**

SITE DETAILS

Legal Description:	Town: 30N	Range: 13W	Sec: 10	Unit: P
NMOCD Haz Ranking: 40	Land Type:	Federal	Operator:	Amoco Production Company

PREVIOUS ACTIVITIES

Site Assessment:	3/94	Excavation:	4/94	Soil Boring:	10/95
Monitor Well:	10/95	Geoprobe:	NA	Additional MWs:	6/99
Downgradient MWs:	11/95	Replace MW:	NA	Quarterly Initiated:	NA
ORC Nutrient Injection:	NA	Re-Excavation:	NA	PSH Removal Initiated:	7/97
Annual Initiated:	10/00	Quarterly Resumed:	NA		

* Additional downgradient monitoring wells were attempted in 1995 and in 1999; however, these borings were dry and wells were not installed.

SUMMARY OF 2003 ACTIVITIES

MW-1: Weekly free-product recovery activities were performed during 2003. Quarterly static water level monitoring was performed during 2003.

MW-2: Annual groundwater sampling (June) was performed during 2003. Quarterly static water level monitoring was performed during 2003.

MW-3: Weekly free-product recovery activities were performed during 2003. Quarterly static water level monitoring was performed during 2003.

MW-4: Quarterly static water level monitoring was performed during 2003.

Site-Wide Activities: No other activities were performed at this site during 2003.

SITE MAP

A site map (June) is attached in Figure 1.

**EPFS GROUNDWATER SITES
2003 ANNUAL GROUNDWATER REPORT**

**James F. Bell #1E
Meter Code: 94715**

SUMMARY TABLES AND GRAPHS

- Analytical data for 2003 are summarized in Table 1, and historic data are presented graphically in Figures 2 through 5.
- Free-product recovery data for 2003 are summarized in Table 2, and historic data are presented graphically in Figures 6 and 7.
- The laboratory report is presented in Attachment 1.
- Field documentation is presented in Attachment 2.

GEOLOGIC LOGS AND WELL COMPLETION DIAGRAMS

No subsurface activities were performed at this site during 2003.

DISPOSITION OF GENERATED WASTES

All phase-separated hydrocarbons were disposed of at the EPFS Kutz Separator located in Bloomfield, New Mexico.

ISOCONCENTRATION MAPS

No isoconcentration maps were prepared for this site, however, the attached site maps present both the potentiometric surface and analytical data collected during 2003.

CONCLUSIONS

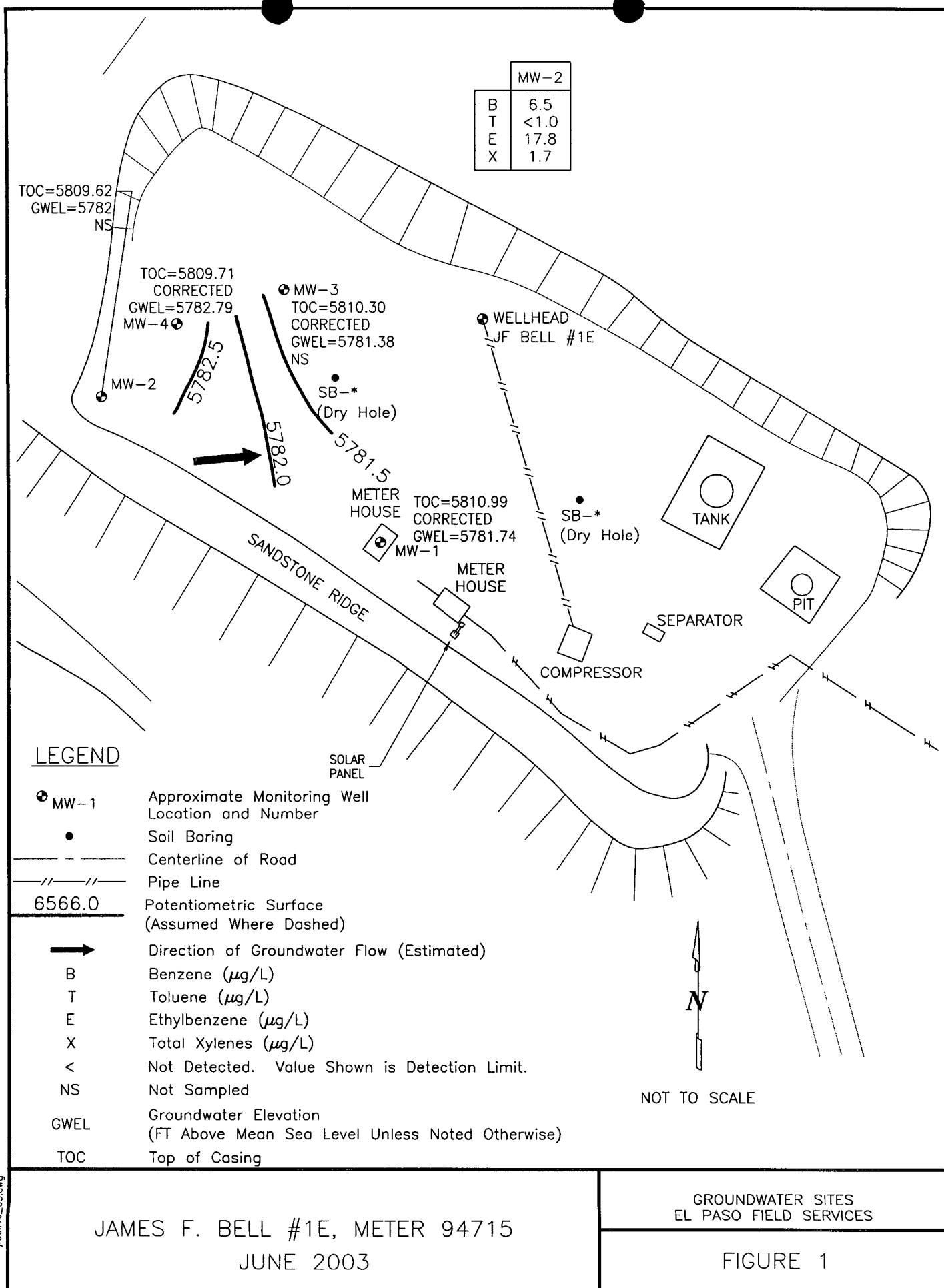
- Free-product recovery efforts at MW-1 resulted in removal of approximately 52 gallons of free-phase hydrocarbons during 2003 bringing the cumulative total volume recovered to approximately 793 gallons.
- Free-product recovery efforts at MW-3 resulted in removal of approximately 20 gallons of free-phase hydrocarbons during 2003 bringing the cumulative total volume recovered to approximately 106 gallons.
- Free-product thickness and recovery has been steadily decreasing over time. There was no measurable free-product in MW-3 in December 2003.
- The BTEX concentrations in MW-2 were below standards in 2003.

**EPFS GROUNDWATER SITES
2003 ANNUAL GROUNDWATER REPORT**

**James F. Bell #1E
Meter Code: 94715**

RECOMMENDATIONS

- EPFS will continue monthly free-product recovery efforts at MW-1 and MW-3. EPFS will evaluate passive free-product removal methodologies (i.e., hand bailing, passive skimmers, or hydrocarbon-absorbent material socks) and frequencies for most efficient free-product removal from MW-3 during 2004.
- EPFS will redevelop MW-1 in February 2003.
- Once free-product recovery efforts are complete at MW-1 and MW-3, these wells will be sampled on an annual basis until sample results approach closure criteria. The wells will then be scheduled for quarterly sampling until closure criteria are met.
- EPFS will continue annual groundwater sample collection and quarterly water level monitoring at MW-2.
- Because historic data collected at MW-4 indicate concentrations of BTEX constituents below analytical detection limits, EPFS will not sample this well until the site closure samples are collected. Water level monitoring will continue on a quarterly basis.



jfbell1e_03.dwg

TABLE 1
SUMMARY OF BTEX COMPOUNDS IN 2003 GROUNDWATER SAMPLES
JAMES F BELL #1E (METER #94715)

Site Name	Monitoring Well	Sample Date	Benzene (ug/L)	Toluene (ug/L)	Ethylbenzene (ug/L)	Total Xylenes (ug/L)	Depth to Water (ft btoc)
James F. Bell #1E	MW-2	6/19/2003	6.5	<1.0	17.8	1.7	27.04

TABLE 2

SUMMARY OF FREE-PRODUCT REMOVAL DURING 2003
JAMES F BELL #1E (METER #94715)
 (Page 1 of 4)

Site Name	Monitoring Well	Removal Date	Depth to Product (feet btoc)	Depth to Water (feet btoc)	Product Thickness (feet)	Volume of Product Removed (gallons)	Cummulative Volume of Product Removed (gallons)
James F. Bell #1E	MW-1	1/7/03	NM	NM	NM	0.00	740.30
James F. Bell #1E	MW-1	1/29/03	NM	NM	0.58	0.75	741.05
James F. Bell #1E	MW-1	2/5/03	NM	NM	NM	2.00	743.05
James F. Bell #1E	MW-1	2/12/03	NM	NM	NM	1.38	744.43
James F. Bell #1E	MW-1	2/20/03	NM	NM	NM	0.17	744.60
James F. Bell #1E	MW-1	2/28/03	NM	NM	NM	0.00	744.60
James F. Bell #1E	MW-1	3/6/03	NM	NM	NM	1.38	745.97
James F. Bell #1E	MW-1	3/12/03	NM	NM	NM	0.98	746.95
James F. Bell #1E	MW-1	3/19/03	NM	NM	NM	1.38	748.33
James F. Bell #1E	MW-1	3/26/03	NM	NM	NM	0.60	748.93
James F. Bell #1E	MW-1	4/2/03	NM	NM	NM	1.96	750.89
James F. Bell #1E	MW-1	4/10/03	NM	NM	NM	1.57	752.46
James F. Bell #1E	MW-1	4/18/03	28.44	29.29	0.85	0.00	752.46
James F. Bell #1E	MW-1	4/28/03	NM	NM	NM	1.18	753.64
James F. Bell #1E	MW-1	5/7/03	NM	NM	NM	1.18	754.82
James F. Bell #1E	MW-1	5/13/03	NM	NM	NM	1.00	755.82
James F. Bell #1E	MW-1	5/21/03	NM	NM	NM	0.69	756.51
James F. Bell #1E	MW-1	5/27/03	NM	NM	NM	1.47	757.98
James F. Bell #1E	MW-1	6/3/03	NM	NM	NM	0.98	758.96
James F. Bell #1E	MW-1	6/9/03	NM	NM	NM	1.18	760.13
James F. Bell #1E	MW-1	6/16/03	NM	NM	NM	0.00	760.13
James F. Bell #1E	MW-1	6/19/03	29.19	29.41	0.22	0.00	760.13
James F. Bell #1E	MW-1	6/23/03	NM	NM	NM	1.77	761.90
James F. Bell #1E	MW-1	7/10/03	NM	NM	NM	2.00	763.90

Active free-product recovery system at MW-1.

TABLE 2

SUMMARY OF FREE-PRODUCT REMOVAL DURING 2003

JAMES F BELL #1E (METER #94715)

(Page 2 of 4)

Site Name	Monitoring Well	Removal Date	Depth to Product (feet btoc)	Depth to Water (feet btoc)	Product Thickness (feet)	Volume of Product Removed (gallons)	Cumulative Volume of Product Removed (gallons)
James F. Bell #1E	MW-1	7/15/03	NM	NM	NM	0.79	764.69
James F. Bell #1E	MW-1	7/21/03	NM	NM	NM	0.88	765.57
James F. Bell #1E	MW-1	7/29/03	NM	NM	NM	0.19	765.76
James F. Bell #1E	MW-1	8/11/03	NM	NM	NM	3.96	769.72
James F. Bell #1E	MW-1	8/18/03	NM	NM	NM	2.85	772.57
James F. Bell #1E	MW-1	8/25/03	NM	NM	NM	1.57	774.14
James F. Bell #1E	MW-1	9/2/03	NM	NM	NM	2.78	776.92
James F. Bell #1E	MW-1	9/8/03	NM	NM	NM	1.37	778.29
James F. Bell #1E	MW-1	9/15/03	NM	NM	NM	2.16	780.45
James F. Bell #1E	MW-1	9/22/03	28.31	28.64	0.33	0.25	780.70
James F. Bell #1E	MW-1	9/29/03	NM	NM	NM	1.77	782.47
James F. Bell #1E	MW-1	10/6/03	NM	NM	0.90	1.57	784.04
James F. Bell #1E	MW-1	10/13/03	NM	NM	NM	0.78	784.82
James F. Bell #1E	MW-1	10/20/03	NM	NM	NM	2.55	787.37
James F. Bell #1E	MW-1	10/27/03	NM	NM	NM	0.55	787.92
James F. Bell #1E	MW-1	11/3/03	NM	NM	0.04	0.79	788.71
James F. Bell #1E	MW-1	11/10/03	NM	NM	0.04	0.79	789.50
James F. Bell #1E	MW-1	11/17/03	NM	NM	0.04	0.79	790.29
James F. Bell #1E	MW-1	11/26/03	NM	NM	0.06	1.18	791.47
James F. Bell #1E	MW-1	12/4/03	NM	NM	0.015	0.30	791.77
James F. Bell #1E	MW-1	12/9/03	NM	NM	0.04	0.79	792.56
James F. Bell #1E	MW-1	12/15/03	28.04	28.24	0.20	0.13	792.69

TABLE 2

SUMMARY OF FREE-PRODUCT REMOVAL DURING 2003

JAMES F BELL #1E (METER #94715)

(Page 3 of 4)

Site Name	Monitoring Well	Removal Date	Depth to Product (feet btoc)	Depth to Water (feet btoc)	Product Thickness (feet)	Volume of Product Removed (gallons)	Cumulative Volume of Product Removed (gallons)
James F. Bell #1E	MW-3	1/7/03	29.45	30.26	0.81	1.00	87.00
James F. Bell #1E	MW-3	1/22/03	28.75	29.46	0.71	1.00	88.00
James F. Bell #1E	MW-3	1/29/03	28.76	29.34	0.58	0.75	88.75
James F. Bell #1E	MW-3	2/5/03	28.29	28.77	0.48	0.66	89.41
James F. Bell #1E	MW-3	2/12/03	28.78	29.33	0.55	0.80	90.21
James F. Bell #1E	MW-3	2/20/03	28.77	29.33	0.56	1.00	91.21
James F. Bell #1E	MW-3	2/28/03	28.8	29.31	0.51	0.60	91.81
James F. Bell #1E	MW-3	3/2/03	28.81	29.27	0.46	0.50	92.31
James F. Bell #1E	MW-3	3/6/03	28.79	29.31	0.52	0.75	93.06
James F. Bell #1E	MW-3	3/19/03	28.82	29.30	0.48	0.50	93.56
James F. Bell #1E	MW-3	3/26/03	28.82	29.33	0.51	0.33	93.89
James F. Bell #1E	MW-3	4/2/03	28.8	29.33	0.53	0.50	94.39
James F. Bell #1E	MW-3	4/10/03	28.84	29.32	0.48	0.33	94.72
James F. Bell #1E	MW-3	4/18/03	28.85	29.29	0.44	0.30	95.02
James F. Bell #1E	MW-3	4/28/03	28.86	29.19	0.33	0.20	95.22
James F. Bell #1E	MW-3	5/7/03	28.83	29.25	0.42	0.30	95.52
James F. Bell #1E	MW-3	5/13/03	28.85	29.27	0.42	0.30	95.82
James F. Bell #1E	MW-3	5/21/03	28.86	29.29	0.43	0.30	96.12
James F. Bell #1E	MW-3	5/27/03	28.85	29.21	0.36	0.25	96.37
James F. Bell #1E	MW-3	6/3/03	28.84	29.23	0.39	0.33	96.70
James F. Bell #1E	MW-3	6/9/03	28.84	29.20	0.36	0.33	97.03
James F. Bell #1E	MW-3	6/16/03	28.82	29.20	0.38	0.25	97.28
James F. Bell #1E	MW-3	6/19/03	28.86	29.16	0.30	0.00	97.28
James F. Bell #1E	MW-3	6/23/03	28.83	29.23	0.40	0.25	97.53

TABLE 2
SUMMARY OF FREE-PRODUCT REMOVAL DURING 2003
JAMES F BELL #1E (METER #94715)
 (Page 4 of 4)

Site Name	Monitoring Well	Removal Date	Depth to Product (feet btoc)	Depth to Water (feet btoc)	Product Thickness (feet)	Volume of Product Removed (gallons)	Cumulative Volume of Product Removed (gallons)
James F. Bell #1E	MW-3	7/1/03	29.78	29.85	0.07	0.30	97.83
James F. Bell #1E	MW-3	7/10/03	29.96	30.39	0.43	0.00	97.83
James F. Bell #1E	MW-3	7/15/03	30.12	30.29	0.17	0.40	98.23
James F. Bell #1E	MW-3	7/21/03	30.11	30.24	0.13	0.40	98.63
James F. Bell #1E	MW-3	7/29/03	29.89	30.14	0.25	0.40	99.03
James F. Bell #1E	MW-3	8/4/03	29.62	29.94	0.32	0.36	99.39
James F. Bell #1E	MW-3	8/11/03	30.02	30.09	0.07	0.86	100.25
James F. Bell #1E	MW-3	8/18/03	30.01	30.09	0.08	0.59	100.84
James F. Bell #1E	MW-3	8/25/03	30.00	30.09	0.09	0.53	101.37
James F. Bell #1E	MW-3	9/2/03	30.03	30.12	0.09	0.49	101.87
James F. Bell #1E	MW-3	9/8/03	30.05	30.15	0.10	0.38	102.24
James F. Bell #1E	MW-3	9/15/03	29.97	30.05	0.08	0.47	102.71
James F. Bell #1E	MW-3	9/22/03	28.70	29.14	0.44	0.33	103.04
James F. Bell #1E	MW-3	9/29/03	29.95	29.98	0.03	0.73	103.77
James F. Bell #1E	MW-3	10/6/03	29.94	30.00	0.06	0.31	104.09
James F. Bell #1E	MW-3	10/13/03	29.89	29.95	0.06	0.42	104.51
James F. Bell #1E	MW-3	10/20/03	29.80	29.86	0.06	0.38	104.88
James F. Bell #1E	MW-3	10/27/03	29.80	29.85	0.05	0.59	105.48
James F. Bell #1E	MW-3	11/3/03	29.80	29.83	0.03	0.16	105.63
James F. Bell #1E	MW-3	11/10/03	29.65	29.66	0.01	0.16	105.79
James F. Bell #1E	MW-3	11/17/03	29.31	29.32	0.01	0.03	105.82
James F. Bell #1E	MW-3	11/26/03	29.31	29.32	0.01	0.01	105.83
James F. Bell #1E	MW-3	12/4/03	NA	29.23	0.00	0.00	105.83
James F. Bell #1E	MW-3	12/9/03	NA	29.24	0.00	0.00	105.83
James F. Bell #1E	MW-3	12/15/03	NA	28.40	0.00	0.00	105.83

FIGURE 2
HISTORIC BTEX CONCENTRATIONS AND GROUNDWATER ELEVATIONS
JAMES F BELL #1E
MW-1

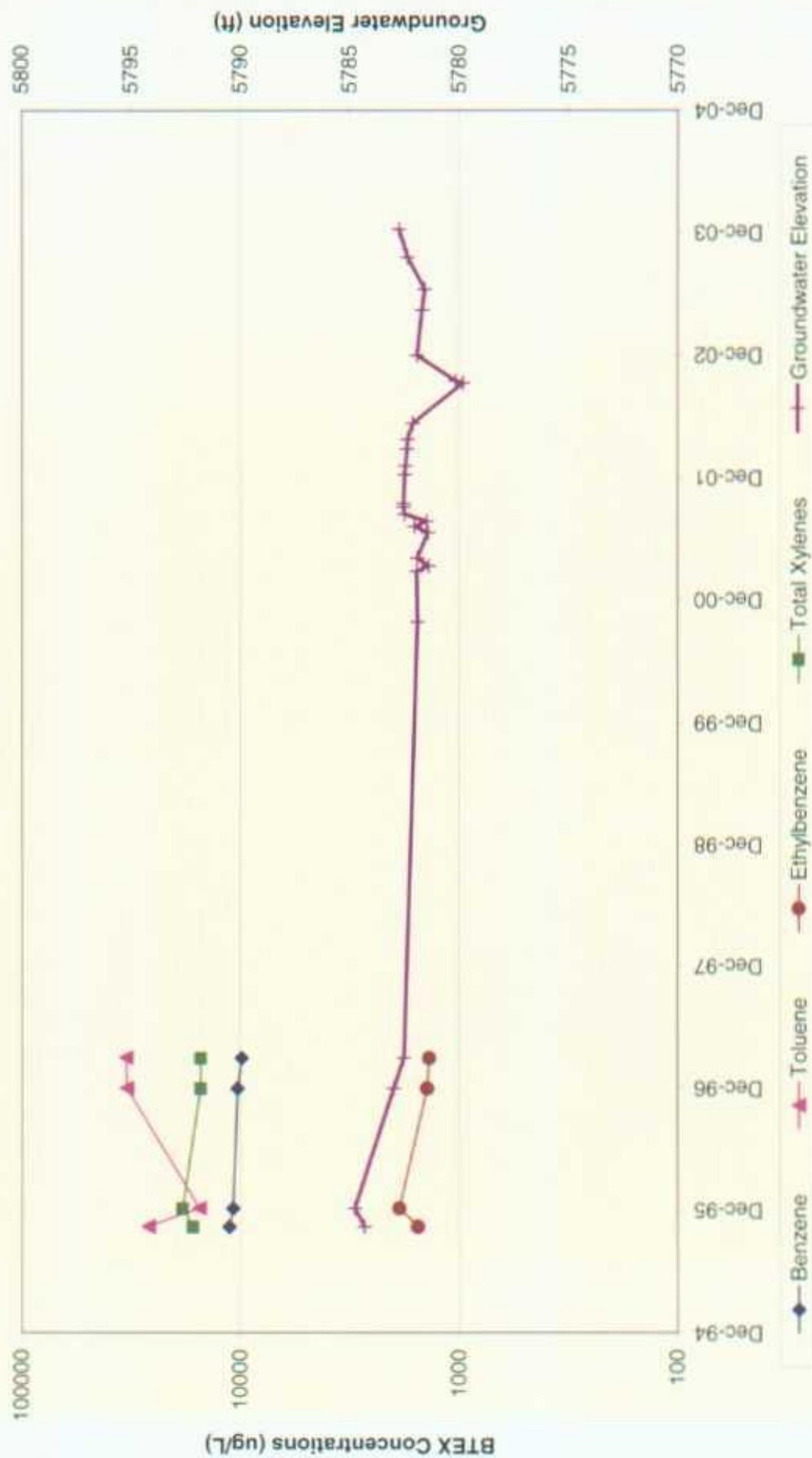


FIGURE 3
HISTORIC BTX CONCENTRATIONS AND GROUNDWATER ELEVATIONS
JAMES F BELL #1E
MW-2

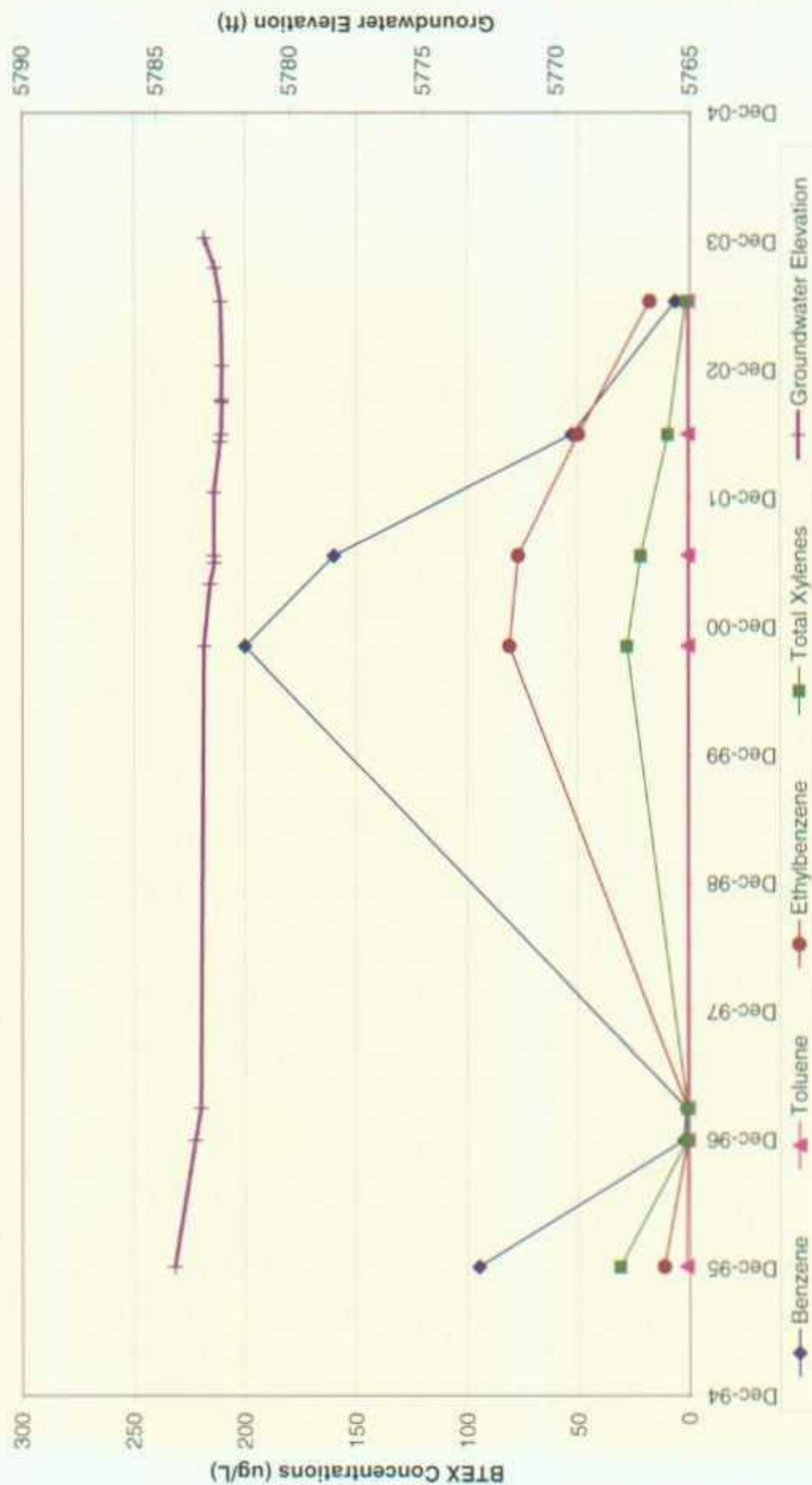


FIGURE 4
HISTORIC BTEX CONCENTRATIONS AND GROUNDWATER ELEVATIONS
JAMES F BELL #1E
MW-3

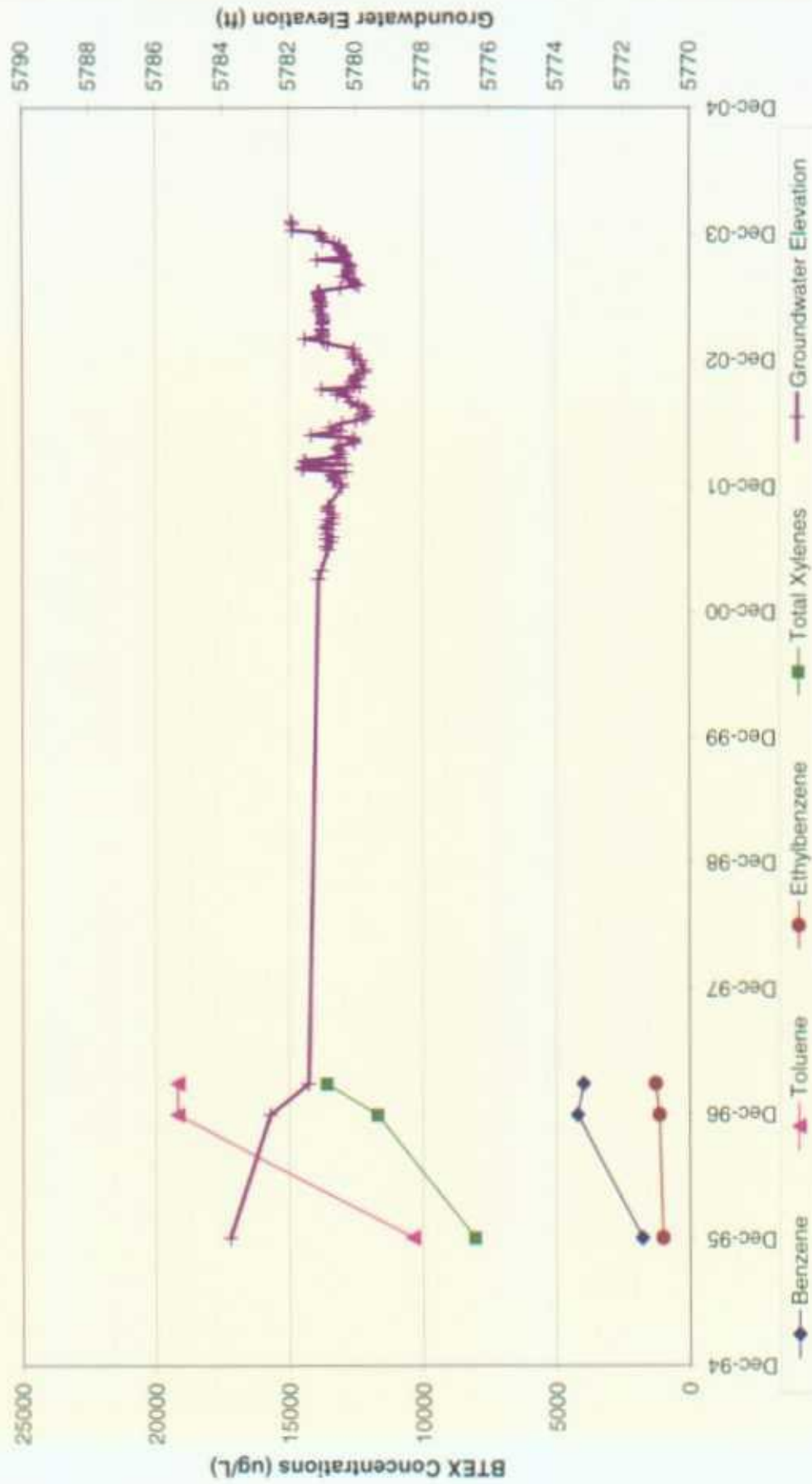


FIGURE 5
HISTORIC BTEX CONCENTRATIONS AND GROUNDWATER ELEVATIONS
JAMES F BELL #1E
MW-4

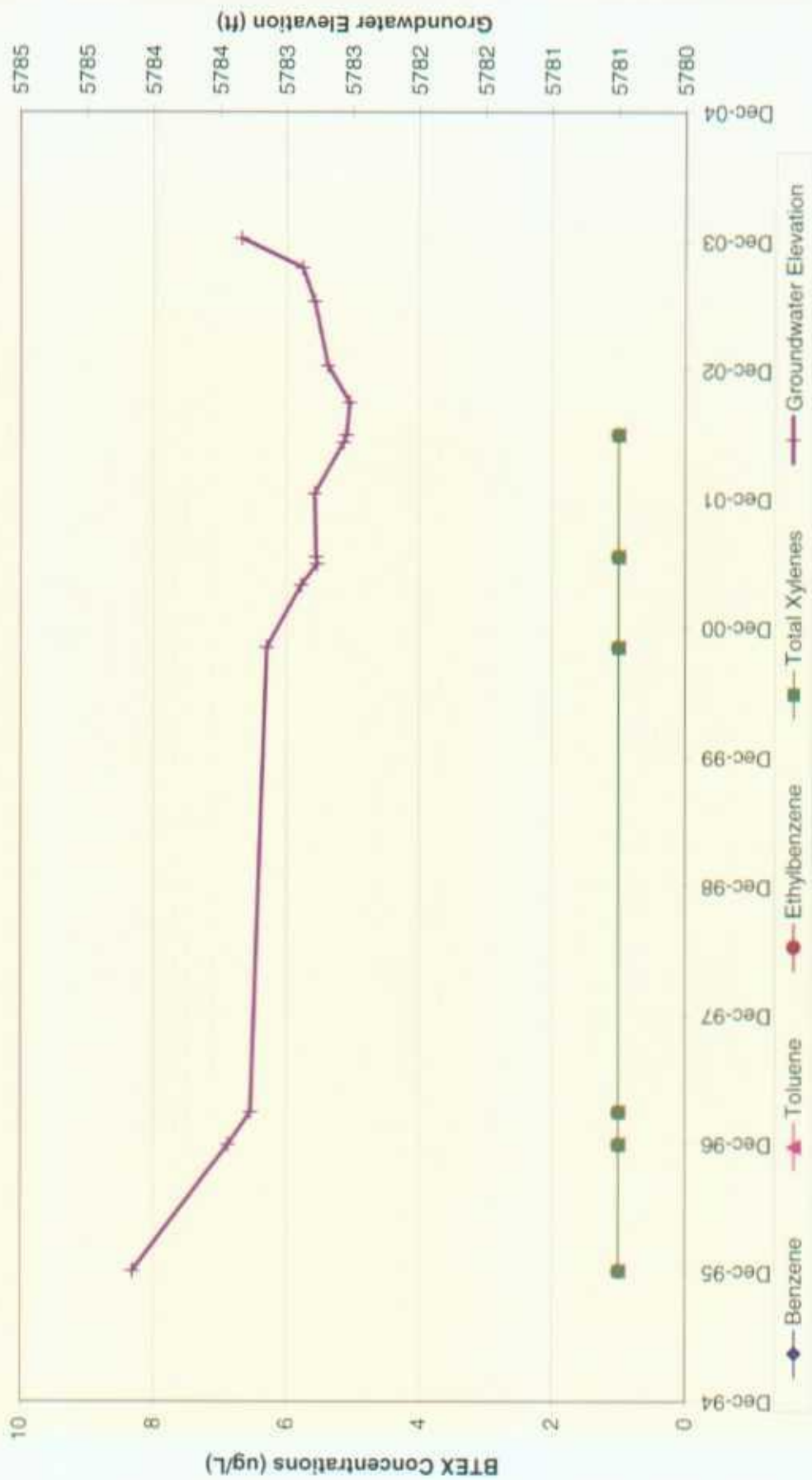


FIGURE 6
HISTORIC FREE-PRODUCT RECOVERY
JAMES F BELL #1E
MW-1

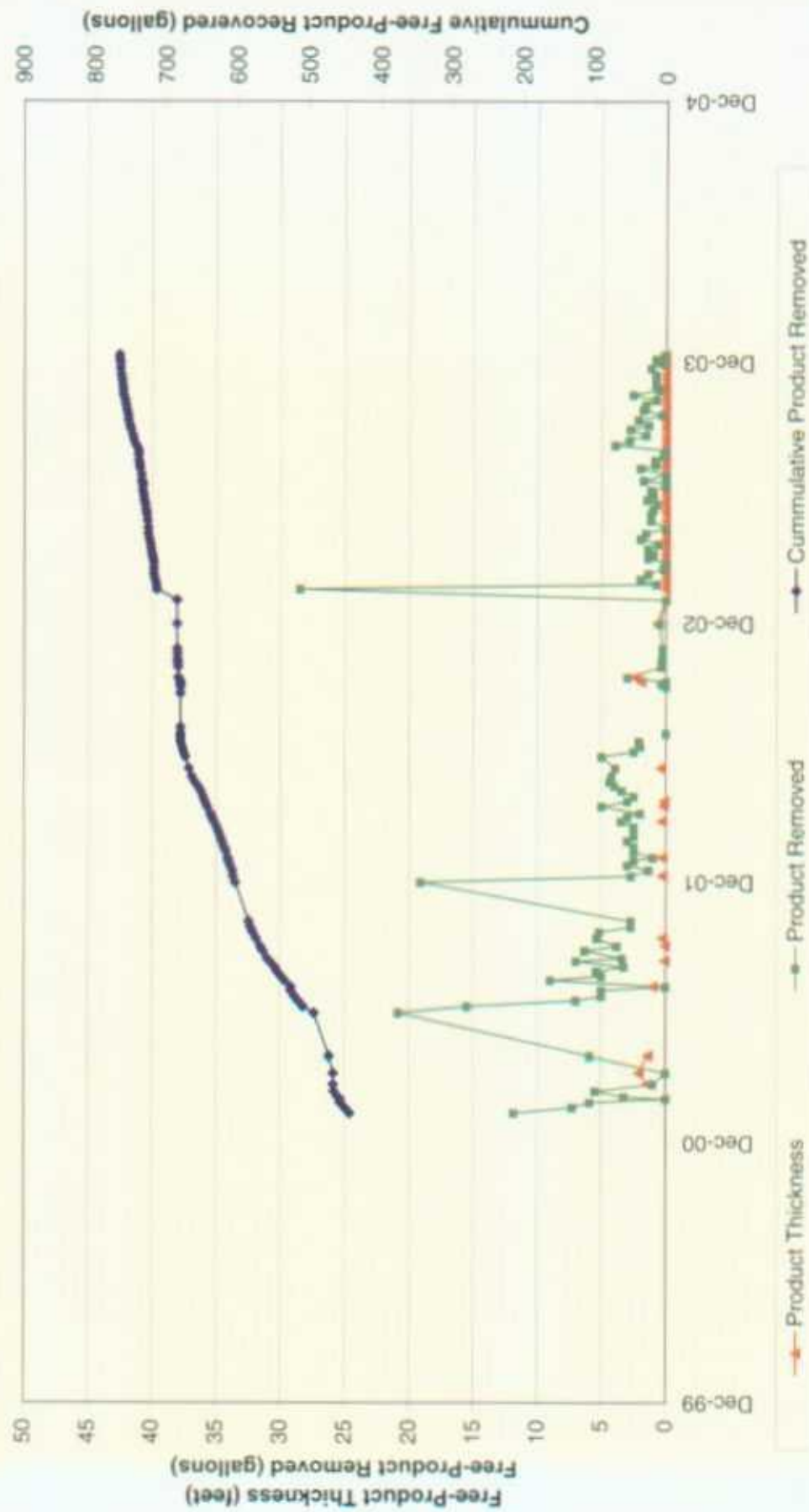
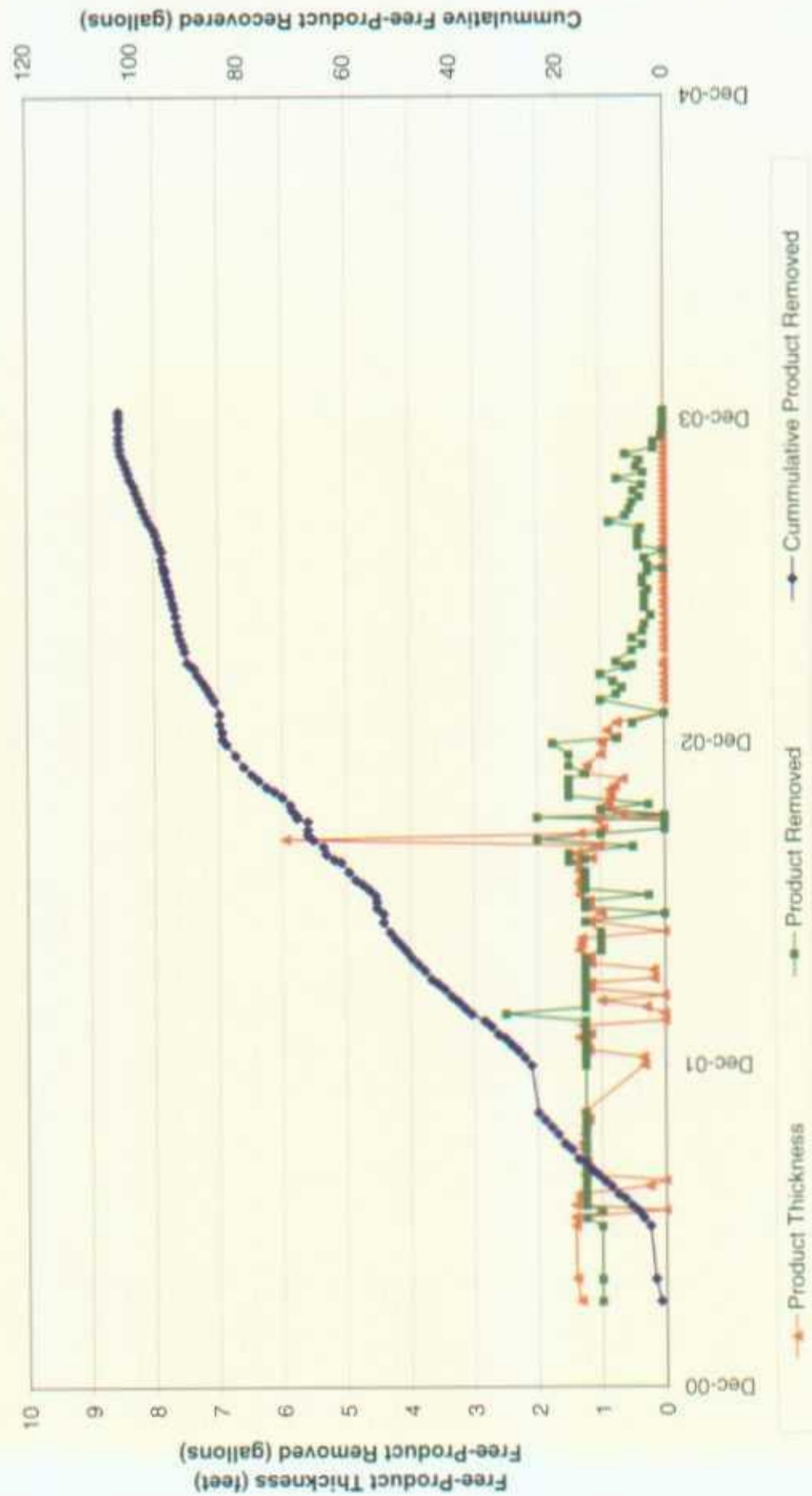


FIGURE 7
HISTORIC FREE-PRODUCT RECOVERY
JAMES F BELL #1E
MW-3



ATTACHMENT 1
LABORATORY REPORTS

(Page 1 of 2)

Validation Complete: Brian Butters - 07/01/03
(Date/Signature)

[illegible]

DATA VALIDATION WORKSHEET

(Page 2 of 2)

Analytical Method: SW-846 8021B (BTEX) MWH Job Number: EPC-SJRB (Groundwater)

Laboratory: Accutest Batch Identification: T4607

Validation Criteria							
Sample ID	190603TB 01	JF Bell MW-2					
Lab ID	T4607-01	T4607-02					
Holding Time	A	A					
Analyte List	A	A					
Reporting Limits	A	A					
Trip Blank	A	A					
Equipment Rinseate Blanks	N/A	N/A					
Field Duplicate/Replicate	N/A	N/A					
Surrogate Spike Recovery	A	A					
Initial Calibration	N	N					
Initial Calibration Verification (ICV)	N	N					
Continuing Calibration Verification (CCV)	N	N					
Laboratory Control Sample (LCS)	A	A					
Laboratory Control Sample Duplicate (LCSD)	N	N					
Method Blank	A	A					
Matrix Spike/Matrix Spike Dup. (MS/MSD)	N/A	A					
Retention Time Window	N	N					
Injection Time(s)	N	N					
Hardcopy vs. Chain-of-Custody	A	A					
EDD vs. Hardcopy	N	N					
EDD vs. Chain of Custody	N	N					

(a) List QC batch identification if different than Batch ID
 A indicates validation criteria were met
 A/L indicates validation criteria met based upon Laboratory's QC Summary Form
 X indicates validation criteria were not met
 N indicates data review were not a project specific requirement
 N/A indicates criteria are not applicable for the specified analytical method or sample
 N/R indicates data not available for review

NOTES:



Gulf Coast

ACCUTEST.
Laboratories

06/26/03

Technical Report for

Montgomery Watson

EPFS San Juan Basin GS

Accutest Job Number: T4607

Report to:

El Paso

lynn.benally@elpaso.com

ATTN: Lynn Benally

Total number of pages in report: 8



Test results contained within this data package meet the requirements of the National Environmental Laboratory Accreditation Conference and/or state specific certification programs as applicable.

Ron Martino
Laboratory Manager

This report shall not be reproduced, except in its entirety, without the written approval of Accutest Laboratories.

Sample Summary

Montgomery Watson

Job No: T4607

EPFS San Juan Basin GS

Sample Number	Collected		Time By	Matrix		Client Sample ID
	Date			Received	Code Type	
T4607-1	06/19/03	07:00		06/20/03	AQ Water	190603TB01
T4607-2	06/19/03	10:20		06/20/03	AQ Water	JF BELL MW-2

Report of Analysis

Client Sample ID: 190603TB01
Lab Sample ID: T4607-1
Matrix: AQ - Water
Method: SW846 8021B
Project: EPFS San Juan Basin GS

Date Sampled: 06/19/03
Date Received: 06/20/03
Percent Solids: n/a

	File ID	DF	Analyzed	By	Prep Date	Prep Batch	Analytical Batch
Run #1	KK005290.D	1	06/23/03	BC	n/a	n/a	GKK279
Run #2							

	Purge Volume
Run #1	5.0 ml
Run #2	

Purgeable Aromatics

CAS No.	Compound	Result	RL	Units	Q
71-43-2	Benzene	ND	1.0	ug/l	
108-88-3	Toluene	ND	1.0	ug/l	
100-41-4	Ethylbenzene	ND	1.0	ug/l	
1330-20-7	Xylenes (total)	ND	3.0	ug/l	
95-47-6	o-Xylene	ND	1.0	ug/l	
	m,p-Xylene	ND	2.0	ug/l	

CAS No.	Surrogate Recoveries	Run# 1	Run# 2	Limits
460-00-4	4-Bromofluorobenzene	99%		64-121%
98-08-8	aaa-Trifluorotoluene	98%		71-121%

ND = Not detected
RL = Reporting Limit
E = Indicates value exceeds calibration range

J = Indicates an estimated value
B = Indicates analyte found in associated method blank
N = Indicates presumptive evidence of a compound

Report of Analysis

Page 1 of 1

Client Sample ID: JF BELL MW-2
 Lab Sample ID: T4607-2
 Matrix: AQ - Water
 Method: SW846 8021B
 Project: EPFS San Juan Basin GS

Date Sampled: 06/19/03
 Date Received: 06/20/03
 Percent Solids: n/a

	File ID	DF	Analyzed	By	Prep Date	Prep Batch	Analytical Batch
Run #1	KK005294.D	1	06/23/03	BC	n/a	n/a	GKK279
Run #2							

	Purge Volume
Run #1	5.0 ml
Run #2	

Purgeable Aromatics

CAS No.	Compound	Result	RL	Units	Q
71-43-2	Benzene	6.5	1.0	ug/l	
108-88-3	Toluene	ND	1.0	ug/l	
100-41-4	Ethylbenzene	17.8	1.0	ug/l	
1330-20-7	Xylenes (total)	1.7	3.0	ug/l	J
95-47-6	o-Xylene	0.55	1.0	ug/l	J
	m,p-Xylene	1.2	2.0	ug/l	J

CAS No.	Surrogate Recoveries	Run# 1	Run# 2	Limits
460-00-4	4-Bromofluorobenzene	99%		64-121%
98-08-8	aaa-Trifluorotoluene	100%		71-121%

ND = Not detected

RL = Reporting Limit

E = Indicates value exceeds calibration range

J = Indicates an estimated value

B = Indicates analyte found in associated method blank

N = Indicates presumptive evidence of a compound

GC Volatiles

QC Data Summaries

Includes the following where applicable:

- Method Blank Summaries
- *Blank Spike Summaries*
- Matrix Spike and Duplicate Summaries

Blank Spike Summary

Page 1 of 1

Job Number: T4607
Account: MWHSLCUT Montgomery Watson
Project: EPFS San Juan Basin GS

Sample	File ID	DF	Analyzed	By	Prep Date	Prep Batch	Analytical Batch
GKK279-BS	KK005288.D 1		06/23/03	BC	n/a	n/a	GKK279

The QC reported here applies to the following samples:

Method: SW846 8021B

T4607-1, T4607-2

CAS No.	Compound	Spike ug/l	BSP ug/l	BSP %	Limits
71-43-2	Benzene	20	19.2	96	74-119
100-41-4	Ethylbenzene	20	19.2	96	82-115
108-88-3	Toluene	20	19.0	95	77-116
1330-20-7	Xylenes (total)	60	57.6	96	79-115
95-47-6	o-Xylene	20	19.1	96	78-114
	m,p-Xylene	40	38.5	96	79-116

CAS No.	Surrogate Recoveries	BSP	Limits
460-00-4	4-Bromofluorobenzene	100%	64-121%
98-08-8	aaa-Trifluorotoluene	98%	71-121%

Method Blank Summary

Page 1 of 1

Job Number: T4607
Account: MWHSLCUT Montgomery Watson
Project: EPFS San Juan Basin GS

Sample	File ID	DF	Analyzed	By	Prep Date	Prep Batch	Analytical Batch
GKK279-MB	KK005289.D 1		06/23/03	BC	n/a	n/a	GKK279

The QC reported here applies to the following samples:

Method: SW846 8021B

T4607-1, T4607-2

CAS No.	Compound	Result	RL	Units	Q
71-43-2	Benzene	ND	1.0	ug/l	
100-41-4	Ethylbenzene	ND	1.0	ug/l	
108-88-3	Toluene	ND	1.0	ug/l	
1330-20-7	Xylenes (total)	ND	3.0	ug/l	
95-47-6	o-Xylene	ND	1.0	ug/l	
	m,p-Xylene	ND	2.0	ug/l	

CAS No.	Surrogate Recoveries		Limits
460-00-4	4-Bromofluorobenzene	99%	64-121%
98-08-8	aaa-Trifluorotoluene	98%	71-121%

Matrix Spike/Matrix Spike Duplicate Summary

Page 1 of 1

Job Number: T4607
Account: MWHSLCUT Montgomery Watson
Project: EPFS San Juan Basin GS

Sample	File ID	DF	Analyzed	By	Prep Date	Prep Batch	Analytical Batch
T4607-2MS	KK005295.D 1		06/23/03	BC	n/a	n/a	GKK279
T4607-2MSD	KK005296.D 1		06/23/03	BC	n/a	n/a	GKK279
T4607-2	KK005294.D 1		06/23/03	BC	n/a	n/a	GKK279

The QC reported here applies to the following samples:

Method: SW846 8021B

T4607-1, T4607-2

CAS No.	Compound	T4607-2 ug/l	Q	Spike ug/l	MS ug/l	MS %	MSD ug/l	MSD %	RPD	Limits Rec/RPD
71-43-2	Benzene	6.5		20	26.8	102	27.6	106	3	64-124/16
100-41-4	Ethylbenzene	17.8		20	38.2	102	39.1	107	2	64-123/14
108-88-3	Toluene	ND		20	20.5	103	21.4	107	4	64-120/13
1330-20-7	Xylenes (total)	1.7	J	60	62.7	102	64.8	105	3	66-118/18
95-47-6	o-Xylene	0.55	J	20	20.7	101	21.4	104	3	65-119/20
	m,p-Xylene	1.2	J	40	42.0	102	43.4	106	3	66-120/14

CAS No.	Surrogate Recoveries	MS	MSD	T4607-2	Limits
460-00-4	4-Bromofluorobenzene	102%	101%	99%	64-121%
98-08-8	aaa-Trifluorotoluene	101%	102%	100%	71-121%



CHAIN OF CUSTODY # 190620373001

10165 Harwin Drive, Ste. 150, Houston, TX 77036
TEL: 713-271-4700 FAX: 713-271-4770
www.acutest.com

FED-EX Tracking # 836557900640	Bottle Order Control #
Accutest! Quote #	Accutest Job #

Laboratories

[illegible]

ATTACHMENT 2
FIELD DOCUMENTATION

PRODUCT RECOVERY/WATER LEVEL DATA

Martin J. Nee
PO Box 3861
Farmington, NM 87499-3861
(505) 334-2791 (505) 320-9675cell

Project Name	<u>San Juan Basin Ground Water</u>	Project No.	<u>30001.0</u>
Project Manager	<u>MJN</u>		
Client Company	<u>MWH</u>	Date	<u>12/23/03</u>
Site Name	<u>JF Bell 1E</u>		

Well	Time	Depth to Product in drum (ft)	Depth to Water (ft)	Product Thickness (ft)	Volume Removed
MW-1	0900	1.59		0.05	.98gal
MW-3			28.42		0
MW-3 final			29.85		2 gal water

Comments

MW-1: Pumping time since last visit: 40 minutes. Tank pressure 1400 psi. Pump pressure 55 psi. Product recovered; $1.645 - 1.59 = 0.05' \times 19.63 \text{ gal. / ft} = 0.98 \text{ gal}$

MW-3: No product. Purged 2 gallons water.

Signature: Martin J. Nee

Date: December 23, 2003

PRODUCT RECOVERY/WATER LEVEL DATA

Martin J. Nee
PO Box 3861
Farmington, NM 87499-3861
(505) 334-2791 (505) 320-9675cell

Project Name San Juan Basin Ground Water Project No. 30001.0
Project Manager MJN
Client Company MWH Date 12/15/03
Site Name JF Bell 1E

Well	Time	Depth to Product (ft)	Depth to Water (ft)	Product Thickness (ft)	Volume Removed
MW-1	1135	28.04	28.24	0.2	.13 gal
					2 gal water
MW-2			26.42		
MW-3			28.40		0
					2 gal water
MW-4			26.37		

Comments

MW-1: Pumping time since last visit: 0 minutes. Replaced pump in well and cycled. Everything looks fine. Tank pressure 1500 psi. Pump pressure 55 psi.

MW-3: No product. Purged 2 gallons water.

Water levels are static.

Signature: Martin J. Nee

Date: December 15, 2003

PRODUCT RECOVERY/WATER LEVEL DATA

Martin J. Nee
PO Box 3861
Farmington, NM 87499-3861
(505) 334-2791 (505) 320-9675cell

Project Name	<u>San Juan Basin Ground Water</u>	Project No.	<u>30001.0</u>
Project Manager	<u>MJN</u>		
Client Company	<u>MWH</u>	Date	<u>12/9/03</u>
Site Name	<u>JF Bell 1E</u>		

Well	Time	Depth to Product in drum (ft)	Depth to Water (ft)	Product Thickness (ft)	Volume Removed
MW-1	1323	1.645	na	na	0.79 gallons
MW-3			29.24	na	<1 oz

Comments

MW-1: Pumping time since last visit: 30 minutes. Reset counter. Tank pressure 1550 psi. Pump pressure 55 psi. Product pumped: $1.685 - 1.645 = 0.04'$ in drum at 19.63 gallons per foot is equal to approximately 0.79 gallons. Pulled pump to obtain static water levels next week.

MW-3: Recovered less than 1 oz of product and water from skimmer. There was no measurable product in well after pulling skimmer. Product may be gone from MW-3. Pulled skimmer to obtain static water levels next week.

Signature: Martin J. Nee

Date: December 9, 2003

PRODUCT RECOVERY/WATER LEVEL DATA

Martin J. Nee
PO Box 3861
Farmington, NM 87499-3861
(505) 334-2791 (505) 320-9675cell

Project Name	<u>San Juan Basin Ground Water</u>	Project No.	<u>30001.0</u>
Project Manager	<u>MJN</u>		
Client Company	<u>MWH</u>	Date	<u>12/4/03</u>
Site Name	<u>JF Bell 1E</u>		

Well	Time	Depth to Product in drum (ft)	Depth to Water (ft)	Product Thickness (ft)	Volume Removed
MW-1	0800	1.685	na	na	0.3 gallons
MW-3			29.23	na	1 oz

Comments

MW-1: Pumping time since last visit: 35 minutes. Reset counter. Tank pressure 1550 psi. Pump pressure 55 psi. Product pumped: $1.70 - 1.685 = 0.015'$ in drum at 19.63 gallons per foot is equal to approximately 0.3 gallons.

MW-3: Recovered less than 1 oz of product and water from skimmer. There was no measurable product in well after pulling skimmer. Product may be gone from MW-3.

Signature: Martin J. Nee

Date: December 4, 2003

PRODUCT RECOVERY/WATER LEVEL DATA

Martin J. Nee
PO Box 3861
Farmington, NM 87499-3861
(505) 334-2791 (505) 320-9675cell

Project Name	<u>San Juan Basin Ground Water</u>	Project No.	<u>30001.0</u>
Project Manager	<u>MJN</u>		
Client Company	<u>MWH</u>	Date	<u>11/26/03</u>
Site Name	<u>JF Bell 1E</u>		

Well	Time	Depth to Product in drum (ft)	Depth to Water (ft)	Product Thickness (ft)	Volume Removed
MW-1	1453	1.70	na	na	1.18
MW-3		29.31	29.32		1 oz

Comments

MW-1: Pumping time since last visit: 50 minutes. Reset counter. Tank pressure 1900 psi. Pump pressure 55 psi. Product pumped: $1.76 - 1.70 = 0.06'$ in drum at 19.63 gallons per foot is equal to approximately 1.18 gallons.

MW-3: Recovered approximately 1 oz of product and water from skimmer. There was no measurable product in well after pulling skimmer. Product may be gone from MW-1.

Signature: Martin J. Nee

Date: November 26, 2003

PRODUCT RECOVERY/WATER LEVEL DATA

Martin J. Nee
PO Box 3861
Farmington, NM 87499-3861
(505) 334-2791 (505) 320-9675cell

Project Name_ San Juan Basin Ground Water Project No. 30001.0
Project Manager MJN
Client Company MWH Date 11/17/03
Site Name JF Bell 1E

Well	Time	Depth to Product (ft)	Depth to Water (ft)	Product Thickness (ft)	Volume Removed
MW-1	1000	1.76	na	na	0.79
MW-3		29.31	29.32	0.01	4 oz

Comments

Nitrogen tank was empty. Pump time at MW-1 30 minutes. MW-1:Pump pressure: 30 psi, Tank pressure: less than 0 psi. Replaced nitrogen tank. Reset pump. New Tank pressure 2300 psi. New pump pressure 50 psi. Product pumped: 1.80-1.76=0.04' in drum at 19.63 gallons per foot is equal to approximately 0.79 gallons.

MW-3: Recovered approximately 4 oz of product from skimmer. Product thickness above is after pulling skimmer. Product is almost gone from MW-1

Signature: Martin J. Nee

Date: November 17, 2003

PRODUCT RECOVERY/WATER LEVEL DATA

Martin J. Nee
PO Box 3861
Farmington, NM 87499-3861
(505) 334-2791 (505) 320-9675cell

Project Name	<u>San Juan Basin Ground Water</u>	Project No.	<u>30001.0</u>
Project Manager	<u>MJN</u>		
Client Company	<u>MWH</u>	Date	<u>11/10/03</u>
Site Name	<u>JF Bell 1E</u>		

Well	Time	Depth to Product (ft)	Depth to Water (ft)	Product Thickness (ft)	Volume Removed
MW-1	0724	1.80	na	na	0.79
MW-3		29.65	29.66	0.01	20 oz

Comments

MW-1: Pump pressure: 55 psi, Tank pressure: less than 50 psi. Pump time 30 minutes. Product pumped: 1.84-1.80=0.04' in drum at 19.63 gallons per foot is equal to approximately 0.79 gallons. Will need to change the nitrogen tank next week.

MW-3: Recovered 20 oz from skimmer. Product thickness above is after pulling skimmer.

Signature: Martin J. Nee

Date: November 10, 2003

PRODUCT RECOVERY/WATER LEVEL DATA

Martin J. Nee
PO Box 3861
Farmington, NM 87499-3861
(505) 334-2791 (505) 320-9675cell

Project Name	<u>San Juan Basin Ground Water</u>	Project No.	<u>30001.0</u>
Project Manager	<u>MJN</u>		
Client Company	<u>MWH</u>	Date	<u>11/3/03</u>
Site Name	<u>JF Bell 1E</u>		

Well	Time	Depth to Product (ft)	Depth to Water (ft)	Product Thickness (ft)	Volume Removed
MW-1	1018	1.84	na	na	0.79
MW-3		29.80	29.83	0.05	20 oz

Comments

MW-1: Pump pressure: 55 psi, Tank pressure: 100 psi. Pump time 35 minutes. .
Product pumped: $1.88 - 1.84 = 0.04'$ in drum at 19.63 gallons per foot is equal to approximately 0.79 gallons. .

MW-3: Recovered 20 oz from skimmer. Product thickness above is after pulling skimmer.

Recovery from the skimmer (MW-3) is approximately 1/3 of last weeks recovery.

Signature: Martin J. Nee

Date: November 3, 2003

PRODUCT RECOVERY/WATER LEVEL DATA

Martin J. Nee
PO Box 3861
Farmington, NM 87499-3861
(505) 334-2791 (505) 320-9675cell

Project Name San Juan Basin Ground Water Project No. 30001.0
Project Manager MJN
Client Company MWH Date 10/27/03
Site Name JF Bell 1E

Well	Time	Depth to Product (ft)	Depth to Water (ft)	Product Thickness (ft)	Volume Removed
MW-1	1706	1.88	na	na	0.55
MW-3		29.80	29.85	0.05	76 oz

Comments

MW-1: Pump pressure: 55 psi, Tank pressure: 200 psi. Pump time 35 minutes. .
Product pumped: $1.91 - 1.88 = 0.05'$ in drum at 19.63 gallons per foot is equal to approximately 0.55 gallons. .

MW-3: Recovered 76 oz from skimmer. Product thickness above is after pulling skimmer.

Signature: Martin J. Nee Date: October 27, 2003

✓

PRODUCT RECOVERY/WATER LEVEL DATA

Martin J. Nee
PO Box 3861
Farmington, NM 87499-3861
(505) 334-2791 (505) 320-9675cell

Project Name_	<u>San Juan Basin Ground Water</u>	Project No.	<u>30001.0</u>
Project Manager	<u>MJN</u>		
Client Company	<u>MWH</u>	Date	<u>10/20/03</u>
Site Name	<u>JF Bell 1E</u>		

Well	Time	Depth to Product (ft)	Depth to Water (ft)	Product Thickness (ft)	Volume Removed
MW-1	1706	1.91	na	na	2.55
MW-3		29.80	29.86	0.06	48 oz

Comments

MW-1: Pump pressure: 55 psi, Tank pressure: 300 psi. Pump time 40 minutes.
Product pumped: $2.04 - 1.91 = 0.13'$ in drum at 19.63 gallons per foot is equal to approximately 2.55 gallons. .

MW-3: Recovered 48 oz from skimmer. Product thickness above is after pulling skimmer.

Signature:	<u>Martin J. Nee</u>	Date:	<u>October 20, 2003</u>
------------	----------------------	-------	-------------------------

PRODUCT RECOVERY/WATER LEVEL DATA

Martin J. Nee
PO Box 3861
Farmington, NM 87499-3861
(505) 334-2791 (505) 320-9675cell

Project Name_ San Juan Basin Ground Water Project No. 30001.0
Project Manager MJN
Client Company MWH Date 10/13/03
Site Name JF Bell 1E

Well	Time	Depth to Product (ft)	Depth to Water (ft)	Product Thickness (ft)	Volume Removed
MW-1	1024	0.86	na	na	0.78
MW-3		29.89	29.95	0.06	54 oz

Comments

MW-1: Pump pressure: 55 psi, Tank pressure: 375 psi. Pump time 10 minutes. Tank was full. Product pumped: $0.90 - 0.86 = 0.04'$ in drum at 19.63 gallons per foot is equal to approximately 0.78 gallons. Emptied 23 gallons from drum.

MW-3: Recovered 54 oz from skimmer. Product thickness above is after pulling skimmer.

Signature: Martin J. Nee Date: October 13, 2003

PRODUCT RECOVERY/WATER LEVEL DATA

Martin J. Nee
PO Box 3861
Farmington, NM 87499-3861
(505) 334-2791 (505) 320-9675cell

Project Name_	<u>San Juan Basin Ground Water</u>	Project No.	<u>30001.0</u>
Project Manager	<u>MJN</u>		
Client Company	<u>MWH</u>	Date	<u>10-06-03</u>
Site Name	<u>JF Bell 1E</u>		

Well	Time	Depth to Product (ft)	Depth to Water (ft)	Product Thickness (ft)	Volume Removed
MW-1	0826	0.90	na	na	1.57
MW-3		29.94	30.00	0.06	40 oz

Comments

MW-1: Pump pressure: 55 psi, Tank pressure: 375 psi. Pump time 35 minutes.
Product pumped: $0.98 - .90 = 0.08$ feet in drum at 19.63 gallons per foot is equal to approximately 1.57 gallons.

MW-3: Recovered 40 oz from skimmer. Product thickness above is after pulling skimmer.

Signature:	<u>Martin J. Nee</u>	Date:	<u>October 6, 2003</u>
------------	----------------------	-------	------------------------

PRODUCT RECOVERY/WATER LEVEL DATA

Martin J. Nee
PO Box 3861
Farmington, NM 87499-3861
(505) 334-2791 (505) 320-9675cell

Project Name San Juan Basin Ground Water Project No. 30001.0
Project Manager MJN
Client Company MWH Date 9-29-03
Site Name JF Bell 1E

Well	Time	Depth to Product (ft)	Depth to Water (ft)	Product Thickness (ft)	Volume Removed
MW-1	1137	28.31	na	na	1.77
MW-3		29.95	29.98	0.03	94 oz

Comments

MW-1: Pump pressure: 50 psi, Tank pressure: 500 psi. Pump time 35 minutes.
Product pumped: $1.07 - 0.98 = 0.09$ feet in drum at 19.63 gallons per foot is equal to approximately 1.77 gallons.

MW-3: Recovered 94 oz from skimmer. Product thickness above is after pulling skimmer.

Signature: Martin J. Nee Date: September 29, 2003

PRODUCT RECOVERY/WATER LEVEL DATA

Martin J. Nee
PO Box 3861
Farmington, NM 87499-3861
(505) 334-2791 (505) 320-9675cell

Project Name San Juan Basin Ground Water Project No. 30001.0
Project Manager MJN
Client Company MWH Date 9-22-03
Site Name JF Bell 1E

Well	Time	Depth to Product (ft)	Depth to Water (ft)	Product Thickness (ft)	Volume Removed
MW-1	1457	28.31	28.64	0.33	0.25
			30.27		2 gal water
MW-2		-	26.82	-	-
MW-3		28.70	29.14	0.44	.33
			31.07		3 gal water
MW-4			26.83		

Comments

Product pump and skimmer were out for a week to get good static water levels.
Replaced pump and skimmer. Pump pressure: 50 psi, Tank pressure: 550 psi.
Cycled pump everything looks good. Bailed product by hand.

Signature: Martin J. Nee

Date: September 22, 2003

PRODUCT RECOVERY

Martin J. Nee
PO Box 3861
Farmington, NM 87499-3861
(505) 334-2791 (505) 320-9675cell

Project Name	<u>San Juan Basin Ground Water</u>	Project No.	<u>30001.0</u>
Project Manager	<u>MJN</u>		
Client Company	<u>MWH</u>	Date	<u>9-15-03</u>
Site Name	<u>JF Bell #1E</u>		

Well	Time	Depth to Product (ft)	Depth to Water (ft)	Product Thickness (ft)	Volume Removed
MW-1	1631	1.07	na	na	see below
		28.64	28.665		
MW-3		29.97	30.05	0.08	see below

Comments

MW-1

Product pumped: $1.18 - 1.07 = 0.11$ feet in drum at 19.63 gallons per foot is equal to approximately 2.16 gallons. Pump time: 40 minutes. Pressure in tank : 600, pump pressure: 50 psi. Reset pump time clock to 00. Pulled pump and checked product thickness system is off until next weeks water level check

MW-3

Recovered 60 oz product in the skimmer. Skimmer is out until water level check next week

Signature:	<u>Martin J. Nee</u>	Date:	<u>September 15, 2003</u>
------------	----------------------	-------	---------------------------

PRODUCT RECOVERY

Martin J. Nee
PO Box 3861
Farmington, NM 87499-3861
(505) 334-2791 (505) 320-9675cell

Project Name	<u>San Juan Basin Ground Water</u>	Project No.	<u>30001.0</u>
Project Manager	<u>MJN</u>		
Client Company	<u>MWH</u>	Date	<u>9-8-03</u>
Site Name	<u>JF Bell #1E</u>		

Well	Time	Depth to Product (ft)	Depth to Water (ft)	Product Thickness (ft)	Volume Removed
MW-1	1116	1.18	na	na	see below
MW-3		30.05	30.15	0.1	see below

Comments

MW-1

Product pumped: $1.25 - 1.18 = 0.07$ feet in drum at 19.63 gallons per foot is equal to approximately 1.37 gallons. Pump time: 40 minutes. Pressure in tank : 650, pump pressure: 50 psi. Reset pump time clock to 00. Everything looks fine.

MW-3

Recovered 48 oz product in the skimmer.

Signature:	<u>Martin J. Nee</u>	Date:	<u>September 8, 2003</u>
------------	----------------------	-------	--------------------------

PRODUCT RECOVERY

Martin J. Nee
PO Box 3861
Farmington, NM 87499-3861
(505) 334-2791 (505) 320-9675cell

Project Name	<u>San Juan Basin Ground Water</u>	Project No.	<u>30001.0</u>
Project Manager	<u>MJN</u>		
Client Company	<u>MWH</u>	Date	<u>9-2-03</u>
Site Name	<u>JF Bell #1E</u>		

Well	Time	Depth to Product (ft)	Depth to Water (ft)	Product Thickness (ft)	Volume Removed
MW-1	1510	1.25	na	na	see below
MW-3		30.03	30.12	0.09	see below

Comments

MW-1

Product pumped: $1.39 - 1.25 = 0.14$ feet in drum at 19.63 gallons per foot is equal to approximately 2.78 gallons. Pump time 40 minutes. Pressure in tank = 750, pump pressure at 50 psi. Reset pump time clock to 00. Everything looks fine.

MW-3

Recovered 63 oz product in the skimmer.

Signature:	<u>Martin J. Nee</u>	Date:	<u>September 2, 2003</u>
------------	----------------------	-------	--------------------------

PRODUCT RECOVERY

Martin J. Nee
PO Box 3861
Farmington, NM 87499-3861
(505) 334-2791 (505) 320-9675cell

Project Name San Juan Basin Ground Water Project No. 30001.0
Project Manager MJN
Client Company MWH Date 8-25-3
Site Name JF Bell #1E

Well	Time	Depth to Product (ft)	Depth to Water (ft)	Product Thickness (ft)	Volume Removed
MW-1	1223	1.39	na	na	see below
MW-3		30.00	30.09	0.09	see below

Comments

MW-1

Product pumped: $1.47 - 1.39 = 0.08$ feet in drum at 19.63 gallons per foot is equal to approximately 1.57 gallons. Pump time 30 minutes. Pressure in tank = 900, pump pressure at 50 psi. Reset pump time clock to 00. Everything looks fine.

MW-3

Recovered 68 oz product in the skimmer.

Signature: Martin J. Nee Date: August 25, 2003

PRODUCT RECOVERY

Martin J. Nee
PO Box 3861
Farmington, NM 87499-3861
(505) 334-2791 (505) 320-9675cell

Project Name	<u>San Juan Basin Ground Water</u>	Project No.	<u>30001.0</u>
Project Manager	<u>MJN</u>		
Client Company	<u>MWH</u>	Date	<u>8-18-03</u>
Site Name	<u>JF Bell #1E</u>		

Well	Time	Depth to Product (ft)	Depth to Water (ft)	Product Thickness (ft)	Volume Removed
MW-1	17.02	1.47	na	na	see below
MW-3		30.01	30.09	0.08	see below

Comments

MW-1

Product pumped: $1.615 - 1.47 = 0.145$ feet in drum at 19.63 gallons per foot is equal to approximately 2.85 gallons. Pump time 40 minutes. Pressure in tank = 1100, pump pressure at 50 psi. Reset pump time clock to 00. Everything looks fine.

MW-3

Recovered 76 oz product in the skimmer.

Signature: Martin J. Nee Date: August 18, 2003

PRODUCT RECOVERY

Martin J. Nee
PO Box 3861
Farmington, NM 87499-3861
(505) 334-2791 (505) 320-9675cell

Project Name	<u>San Juan Basin Ground Water</u>	Project No.	<u>30001.0</u>
Project Manager	<u>MJN</u>		
Client Company	<u>MWH</u>	Date	<u>8-11-03</u>
Site Name	<u>JF Bell #1E</u>		

Well	Time	Depth to Product (ft)	Depth to Water (ft)	Product Thickness (ft)	Volume Removed
MW-1	1421	1.615	na	na	see below
MW-3		30.02	30.09	0.07	see below

Comments

MW-1

Product pumped: $1.80 - 1.615 = 0.18$ feet in drum at 19.63 gallons per foot is equal to approximately 3.96 gallons. Pump time 35 minutes Pressure in tank =1150, pump pressure at 50 psi. Reset pump time clock to 00. Everything looks fine.

MW-3

Recovered 110 oz product in the skimmer.

Signature: Martin J. Nee Date: August 11, 2003

PRODUCT RECOVERY

Martin J. Nee
PO Box 3861
Farmington, NM 87499-3861
(505) 334-2791 (505) 320-9675cell

Project Name	<u>San Juan Basin Ground Water</u>	Project No.	<u>30001.0</u>
Project Manager	<u>MJN</u>		
Client Company	<u>MWH</u>	Date	<u>8-4-03</u>
Site Name	<u>JF Bell #1E</u>		

Well	Time	Depth to Product (ft)	Depth to Water (ft)	Product Thickness (ft)	Volume Removed
MW-1	1547	1.80	na	na	see below
MW-3		29.62	29.94	0.31	see below

Comments

MW-1

No product was pumped since 7/29 due to empty nitrogen bottle. Installed the nitrogen bottle from the Blanco North Flare pit site. Tank Pressure 1300 psi. Pump pressure 45 psi. Reset pump time clock to 00. Cycled pump. Everything looks fine.

MW-3

Recovered 46 oz of product in skimmer.

Signature: Martin J. Nee Date: August 5, 2003

PRODUCT RECOVERY

Martin J. Nee
PO Box 3861
Farmington, NM 87499-3861
(505) 334-2791 (505) 320-9675cell

Project Name	<u>San Juan Basin Ground Water</u>	Project No.	<u>30001.0</u>
Project Manager	<u>MJN</u>		
Client Company	<u>MWH</u>	Date	<u>7-29-03</u>
Site Name	<u>JF Bell #1E</u>		

Well	Time	Depth to Product (ft)	Depth to Water (ft)	Product Thickness (ft)	Volume Removed
MW-1	1259	1.80	na	na	see below
MW-3		29.89	30.14	0.25	see below

Comments

MW-1

Tank pressure is 0 psi. Nitrogen tank needs to be replaced. Depth to product in drum is 1.80feet beneath top of drum. We accumulated 0.01 feet of product in the drum since 7/21, which translates to approximately .19 gallons. Pump run time was 10minutes.

MW-3

Recovered 44 oz of product in skimmer.

Signature: Martin J. Nee Date: July 29, 2003

PRODUCT RECOVERY

Martin J. Nee
PO Box 3861
Farmington, NM 87499-3861
(505) 334-2791 (505) 320-9675cell

Project Name	<u>San Juan Basin Ground Water</u>	Project No.	<u>30001.0</u>
Project Manager	<u>MJN</u>		
Client Company	<u>MWH</u>	Date	<u>7-21-03</u>
Site Name	<u>JF Bell #1E</u>		

Well	Time	Depth to Product (ft)	Depth to Water (ft)	Product Thickness (ft)	Volume Removed
MW-1	1330	1.81	na	na	see below
MW-3		30.11	30.24	0.13	see below

Comments

MW-1

Tank pressure is 300 psi. Pump is set at 55 psi. Depth to product in drum is 1.81feet beneath top of drum. We accumulated 0.05 feet of product in the drum since 7/15, which translates to approximately .88 gallons. Pump run time was 30minutes.

MW-3

Recovered 42 oz of product in skimmer.

Signature: Martin J. Nee Date: July 21, 2003

PRODUCT RECOVERY

Martin J. Nee
PO Box 3861
Farmington, NM 87499-3861
(505) 334-2791 (505) 320-9675cell

Project Name	<u>San Juan Basin Ground Water</u>	Project No.	<u>30001.0</u>
Project Manager	<u>MJN</u>		
Client Company	<u>MWH</u>	Date	<u>7-15-03</u>
Site Name	<u>JF Bell #1E</u>		

Well	Time	Depth to Product (ft)	Depth to Water (ft)	Product Thickness (ft)	Volume Removed
MW-1	1145	1.86	na	na	0.79 gal
MW-3		30.12	30.29	0.17	44 oz

Comments

MW-1

Tank pressure is 350 psi. Pump is set at 55 psi. Depth to product in drum is 1.86 feet beneath top of drum. We accumulated 0.04 feet of product in the drum since 7/10, which translates to approximately .79 gallons. Pump run time was 25 minutes.

MW-3

Recovered 44 oz of product in skimmer.

Signature: Martin J. Nee Date: July 15, 2003

PRODUCT RECOVERY

Martin J. Nee
PO Box 3861
Farmington, NM 87499-3861
(505) 334-2791 (505) 320-9675cell

Project Name	<u>San Juan Basin Ground Water</u>	Project No.	<u>30001.0</u>
Project Manager	<u>MJN</u>		
Client Company	<u>MWH</u>	Date	<u>7-10-03</u>
Site Name	<u>JF Bell #1E</u>		

Well	Time	Depth to Product (ft)	Depth to Water (ft)	Product Thickness (ft)	Volume Removed
MW-1	1535	1.90	na	na	see below
MW-3		29.96	30.39	0.43	see below

Comments

MW-1

Tank pressure is 400 psi. Pump is set at 55 psi. Depth to product in drum is 1.90 feet beneath top of drum. Pump run time is 45 minutes and probably pumped approximately 2 gallons of product. Did not have measurement following last weeks emptying of drum to compare to this week's data.

MW-3

The bottom valve leaked on the skimmer so it filled with water. Fixed the bottom valve and reinstalled skimmer. Recovered approximately 1 gallon of water and several ounces of product.

Signature: Martin J. Nee Date: July 10, 2003

PRODUCT RECOVERY

Martin J. Nee
PO Box 3861
Farmington, NM 87499-3861
(505) 334-2791 (505) 320-9675cell

Project Name	<u>San Juan Basin Ground Water</u>	Project No.	<u>30001.0</u>
Project Manager	<u>MJN</u>		
Client Company	<u>MWH</u>	Date	<u>7-1-03</u>
Site Name	<u>JF Bell #1E</u>		

Well	Time	Depth to Product (ft)	Depth to Water (ft)	Product Thickness (ft)	Volume Removed
MW-1	0751	0.77	na	na	na
MW-3		29.78	29.85	0.07	36 oz from skimmer

Comments

Tank pressure is 400 psi. Pump is set at 55 psi. Product increased in drum by .86 - .77 = 0.09 feet. This is approximately 19.63 gal./ft x 0.09 feet = 1.77 gallons.
Siphoned product from drum.

Signature: Martin J. Nee Date: July 2, 2003

PRODUCT RECOVERY

Martin J. Nee
PO Box 3861
Farmington, NM 87499-3861
(505)334-2791 (505)320-9675cell

Project Name San Juan Basin Ground Water Project No. 30001.0
Project Manager MJN
Client Company MWH Date 6-23-03
Site Name JF Bell #1E

Well	Time	Depth to Product (ft)	Depth to Water (ft)	Product Thickness (ft)	Volume Removed
MW-1	0751	0.86	na	na	na
MW-3		28.83	29.23	0.4	.25
MW-3 Final			29.78		1 gallon water removed

Comments

Tank pressure is 400 psi. Pump is set at 50 psi. Product increased in drum by .95 - .86 = 0.09 feet. This is approximately 19.63 gal/ft x 0.09 feet = 1.77 gallons.
Installed skimmer in MW-3.

Signature: Martin J. Nee Date: June 23, 2003

WELL DEVELOPMENT AND SAMPLING LOG

Project No: 30001.0 Project Name: San Juan Basin Client: MWH
 Location: IF Bell Well No: MW-2 Development ☐ Sampling ☒
 Project Manager MTN Date 6.19.03 Start Time 0940 Weather PC showers 70s
 Depth to Water 27.04 Depth to Product - Product Thickness - Measuring Point TOC
 Water Column Height 6.88 Well Dia. 4"

Sampling Method: Submersible Pump ☐ Centrifugal Pump ☐ Peristaltic Pump ☐ Other ☐

Bottom Valve Bailer ☒ Double Check Valve Bailer ☐ Stainless-Steel Kemmerer ☐

Criteria: 3 to 5 Casing Volumes of Water Removal ☒ Stabilization of Indicator Parameters ☒ Other on bail day

Gal/ft x ft of water	Water Volume In Well		Gal/oz to be removed
	Gallons	Ounces	
<u>6.88 x 65</u>	<u>447 x 3</u>		<u>13.42</u>

Time (military)	pH	SC (umhos/cm)	Temp (°C)	Eh-ORP (millivolts)	D.O. (mg/L)	Turbidity (NTU)	Vol Evac. (gal.)	Comments/ Flow rate
<u>0940</u>	<u>732</u>	<u>12930</u>	<u>18.8</u>				<u>1</u>	<u>clean</u>
	<u>731</u>	<u>9990</u>	<u>18.2</u>				<u>2</u>	
	<u>730</u>	<u>1070</u>	<u>17.9</u>				<u>3</u>	<u>Gray Silty</u>
	<u>730</u>	<u>9850</u>	<u>17.9</u>				<u>10</u>	
<u>1015</u>	<u>729</u>	<u>8970</u>	<u>17.9</u>				<u>14</u>	<u>well is bailing down</u>

Final:

Time 1015 pH 729 SC 8970 Temp 17.9 Eh-ORP D.O. Turbidity Ferrous Iron Vol Evac. 14 Comments/Flow rate

COMMENTS: Having problems w/ pH meter. Maybe due to rain

INSTRUMENTATION:

pH Meter ☒

DO Monitor ☐

Conductivity Meter ☒

Temperature Meter ☒

Other ☐

Water Disposal Kut 2

Sample ID IF Bell MW-2

Sample Time 1020

BTEX ☒ VOCs ☐ Alkalinity ☐

TDS ☐ Cations ☐ Anions ☐ Nitrate ☐ Nitrite ☐ Ammonia ☐ TKN ☐ NM WQCC Metals ☐

Total Phosphorus ☐ ☐ ☐ ☐ ☐ ☐

MS/MSD BD BD Name/Time TB 1906030TB01

PRODUCT RECOVERY/WATER LEVEL DATA

Martin J. Nee
PO Box 3861
Farmington, NM 87499-3861
(505)334-2791 (505)320-9675cell

Project Name_ San Juan Basin Ground Water Project No. 30001.0
Project Manager MJN
Client Company MWH Date 6-19-03
Site Name JF Bell 1E

Well	Time	Depth to Product (ft)	Depth to Water (ft)	Product Thickness (ft)	Volume Removed
MW-1	0926	29.19	29.41	.2	na
MW-2		-	27.04	-	-
MW-3		28.86	29.16	.3	na
MW-4			26.92		

Comments

Signature: Martin J. Nee Date: June 19, 2003

PRODUCT RECOVERY

Martin J. Nee
PO Box 3861
Farmington, NM 87499-3861
(505)334-2791 (505)320-9675cell

Project Name	<u>San Juan Basin Ground Water</u>	Project No.	<u>30001.0</u>
Project Manager	<u>MJN</u>		
Client Company	<u>MWH</u>	Date	<u>6-16-03</u>
Site Name	<u>JF Bell #1E</u>		

Well	Time	Depth to Product (ft)	Depth to Water (ft)	Product Thickness (ft)	Volume Removed
MW-1	1500	na	na	na	na
MW-3		28.82	29.20	.38	.25
MW-3 Final			29.75		1 gallon water removed

Comments

The regulator for the nitrogen tank was repaired as were the hose and leads to the solar panel. A new fitting and an easy-out were purchased from Noels to make the repairs. Checked the system and cycled the pump. Everything appears to be working fine.

Signature: Martin J. Nee

Date: June 16, 2003

PRODUCT RECOVERY

Martin J. Nee
PO Box 3861
Farmington, NM 87499-3861
(505)334-2791 (505)320-9675cell

Project Name San Juan Basin Ground Water Project No. 30001.0
Project Manager MJN
Client Company MWH Date 6-9-03
Site Name JF Bell #1E

Well	Time	Depth to Product (ft)	Depth to Water (ft)	Product Thickness (ft)	Volume Removed
MW-1	1436	0.95	na	na	1.178
MW-3		28.84	29.20	.36	.33
MW-3 Final			29.60		2 gallon water removed

Comments

MW-1: Product recovered in drum since 6/3/03 visit : $1.01 - 0.95 = 0.06 \times 19.63 \text{ gal/ft} = 1.17 \text{ gallons}$. Pump pressure is at 60 psi. Tank reads 1650 psi. Pump time since 6/3/03 visit 25 minutes. Pump set to once per day for five minutes. While doing product removal at MW-3 a large dust devil picked up the meter house at MW-1 and knocked it over. The regulator on the nitrogen tank was broken and the tank lost a good deal of pressure. Scott Pope came out and helped upright the meter house. The nitrogen tank was left in the meter house and the meter house staked down with pole barn nails in each corner. Will check into getting the regulator repaired.

Signature: Martin J. Nee Date: June 9, 2003

PRODUCT RECOVERY

Martin J. Nee
PO Box 3861
Farmington, NM 87499-3861
(505)334-2791 (505)320-9675cell

Project Name	<u>San Juan Basin Ground Water</u>	Project No.	<u>30001.0</u>
Project Manager	<u>MJN</u>		
Client Company	<u>MWH</u>	Date	<u>6-3/03</u>
Site Name	<u>JF Bell #1E</u>		

Well	Time	Depth to Product (ft)	Depth to Water (ft)	Product Thickness (ft)	Volume Removed
MW-1	1100	1.01	na	na	0.98 gal
MW-3		28.84	29.23	0.39	.33
MW-3 Final			30.11		2 gallon water removed

Comments

MW-1: Product recovered in drum since 5/21 visit : $1.06-1.01=0.05 \times 19.63 \text{ gal/ft} = 0.98 \text{ gallons}$. Pump pressure is at 60 psi. Tank reads 1700 psi. Pump time since 5/27 visit 35 minutes. Pump set to once per day for five minutes.

Signature: Martin J. Nee Date: June 5, 2003

PRODUCT RECOVERY

Martin J. Nee
PO Box 3861
Farmington, NM 87499-3861
(505)334-2791 (505)320-9675cell

Project Name	<u>San Juan Basin Ground Water</u>	Project No.	<u>30001.0</u>
Project Manager	<u>MJN</u>		
Client Company	<u>MWH</u>	Date	<u>5-27-03</u>
Site Name	<u>JF Bell #1E</u>		

Well	Time	Depth to Product (ft)	Depth to Water (ft)	Product Thickness (ft)	Volume Removed
MW-1	1537	1.06	na	na	1.47 gal
MW-3		28.85	29.21	0.36	0.25
MW-3 Final			29.54		1 gallon water removed

Comments

MW-1: Product recovered in drum since 5/21 visit : $1.135 - 1.06 = 0.075 \times 19.63 \text{ gal/ft} = 1.47 \text{ gallons}$. Pump pressure is at 55 psi. Tank reads 1800 psi. Pump time since 5/21 visit 35 minutes. Pump set to once per day for five minutes.

Signature: Martin J. Nee Date: May 27, 2003

PRODUCT RECOVERY

Martin J. Nee
PO Box 3861
Farmington, NM 87499-3861
(505)334-2791 (505)320-9675cell

Project Name_	<u>San Juan Basin Ground Water</u>	Project No.	<u>30001.0</u>
Project Manager	<u>MJN</u>		
Client Company	<u>MWH</u>	Date	<u>5-21-03</u>
Site Name	<u>JF Bell #1E</u>		

Well	Time	Depth to Product (ft)	Depth to Water (ft)	Product Thickness (ft)	Volume Removed
MW-1	1438	1.135	na	na	.69 gal
MW-3		28.86	29.29	.43	.3 gal
MW-3 Final			29.64		1 gallons water removed

Comments

Product recovered in drum since 5/7 visit : $1.17 - 1.135 = 0.04 \times 19.63 \text{ gal/ft} = .69$ gallons. Pump pressure is at 55 psi. Tank reads 1700 psi. Pump time since 5/7 visit 35 minutes. Pump set to once per day for five minutes.

Signature: Martin J. Nee Date: May 21, 2003

PRODUCT RECOVERY

Martin J. Nee
PO Box 3861
Farmington, NM 87499-3861
(505)334-2791 (505)320-9675cell

Project Name San Juan Basin Ground Water Project No. 30001.0
Project Manager MJN
Client Company MWH Date 5-13-03
Site Name JF Bell #1E

Well	Time	Depth to Product (ft)	Depth to Water (ft)	Product Thickness (ft)	Volume Removed
MW-1	1438	1.17	na	na	1 gal
MW-3		28.85	29.27	.42	.3 gal
MW-3 Final			29.98		1.5 gallons water removed

Comments

Product recovered in drum since 5/7 visit : $1.22 - 1.17 = 0.05 \times 19.63 \text{ gal/ft} = 1 \text{ gallons}$.
Pump pressure is at 50 psi. Tank reads 1850 psi. Pump time since 5/7 visit 54 minutes. Reset to pump once per day for five minutes.

Signature: Martin J. Nee Date: May 13, 2003

PRODUCT RECOVERY

Martin J. Nee
PO Box 3861
Farmington, NM 87499-3861
(505)334-2791 (505)320-9675cell

Project Name San Juan Basin Ground Water Project No. 30001.0
Project Manager MJN
Client Company MWH Date 5-7-03
Site Name JF Bell #1E

Well	Time	Depth to Product (ft)	Depth to Water (ft)	Product Thickness (ft)	Volume Removed
MW-1	1438	1.22	na	na	1.18 gal
MW-3		28.83	29.25	.42	.3 gal
MW-3 Final			29.95		1.5 gallons water removed

Comments

Product recovered in drum since 4/28 visit : $1.28 - 1.22 = 0.06 \times 19.63 \text{ gal/ft} = 1.18$ gallons. Pump pressure is at 50 psi. Tank reads 1900 psi. Pump time since 4/28 visit 1 hr 21 minutes.

Signature: Martin J. Nee Date: May 7, 2003

PRODUCT RECOVERY

Martin J. Nee
PO Box 3861
Farmington, NM 87499-3861
(505)334-2791 (505)320-9675cell

Project Name_ San Juan Basin Ground Water Project No. 30001.0
Project Manager MJN
Client Company MWH Date 4-28-03
Site Name JF Bell #1E

Well	Time	Depth to Product (ft)	Depth to Water (ft)	Product Thickness (ft)	Volume Removed
MW-1	1301	1.28	na	na	1.18 gal
MW-3		28.86	29.19	.33	.2 gal
MW-3 Final			29.96		2 gallons water removed

Comments

Product recovered in drum since 4/23 visit : $1.34 - 1.28 = 0.06 \times 19.63 \text{ gal/ft} = 1.18$ gallons. pump pressure is at 45 psi. Tank reads 2000 psi. Pump time since 4/23 visit 48 minutes.

Signature: Martin J. Nee Date: April 28, 2003

PRODUCT RECOVERY

Martin J. Nee
PO Box 3861
Farmington, NM 87499-3861
(505)334-2791 (505)320-9675cell

Project Name	<u>San Juan Basin Ground Water</u>	Project No.	<u>30001.0</u>
Project Manager	<u>MJN</u>		
Client Company	<u>MWH</u>	Date	<u>4-23-03</u>
Site Name	<u>JF Bell #1E</u>		

Well	Time	Depth to Product (ft)	Depth to Water (ft)	Product Thickness (ft)	Volume Removed
MW-1	07:30	1.34	na	na	1.96 gal
MW-3	08:00	28.86	29.31	.45	.3 gal
MW-3 Final			29.83		1.5 gallons water removed

Comments

Product recovered in drum since 4/18 visit : $1.44 - 1.34 = 0.10 \times 19.63 \text{ gal/ft} = 1.96$ gallons. pump pressure is at 45 psi. Tank reads 1800 psi. Pump time since 4/18 visit 1 hr 30 minutes.

Signature: Martin J. Nee Date: April 23, 2003

PRODUCT RECOVERY

Martin J. Nee
PO Box 3861
Farmington, NM 87499-3861
(505)334-2791 (505)320-9675cell

Project Name San Juan Basin Ground Water Project No. 30001.0
Project Manager MJN
Client Company MWH Date 4-18-03
Site Name JF Bell #1E

Well	Time	Depth to Product (ft)	Depth to Water (ft)	Product Thickness (ft)	Volume Removed
MW-1	07:15	28.44	29.29	0.85	0
MW-2	07:30		27.11		
MW-3	07:45	28.85	29.29	0.44	.3 gal
MW-4	08:00		27.06		
MW-3 Final			29.73		1.5 gallons water removed

Comments

Measured water level and product thickness in MW-1 then replaced the pump and turned it on. Everything is operating properly. The nitrogen tank read 2000 psi. and the pump was set at approximately 40 psi. No product had been removed since the last visit because the pump was out of the well to let water levels equilibrate.

Signature: Martin J. Nee Date: April 18, 2003

PRODUCT RECOVERY

Martin J. Nee
PO Box 3861
Farmington, NM 87499-3861
(505)334-2791 (505)320-9675cell

Project Name San Juan Basin Ground Water Project No. 30001.0
Project Manager MJN
Client Company MWH Date 4-10-03
Site Name JF Bell #1E

Well	Time	Depth to Product (ft)	Depth to Water (ft)	Product Thickness (ft)	Volume Removed
MW-1 (drum)	08:50	1.44	na	na	1.57 gal.
MW-1 (well)		-	20.09 *		
MW-3 Initial	09:42	28.84	29.32	0.48	1/3 gallon product
MW-3 Final			29.79		1.5 gallons water

Comments

MW-1: Pumping time since last visit: 2 hr 24 min. Nitrogen cylinder reads 2100 psi. Pump pressure is set at 50 psi. Recovered 0.08 feet of product at 19.64 gal. per foot since last visit. Turned off system and pulled pump. * well not fully recovered after pulling pump. No product in well.

Signature: Martin J. Nee

Date: April 10, 2003

PRODUCT RECOVERY

Martin J. Nee
PO Box 3861
Farmington, NM 87499-3861
(505)334-2791 (505)320-9675cell

Project Name	<u>San Juan Basin Ground Water</u>	Project No.	<u>30001.0</u>
Project Manager	<u>MJN</u>		
Client Company	<u>MWH</u>	Date	<u>4-2-03</u>
Site Name	<u>JF Bell #1E</u>		

Well	Time	Depth to Product (ft)	Depth to Water (ft)	Product Thickness (ft)	Volume Removed
MW-1	10:17	1.52	na	na	1.96 gal.
MW-3 Initial	10:48	28.8	29.33	0.53	½ gallon product
MW-3 Final			30.27		3 gallons water

Comments

MW-1: Pumping time since last visit: 2 hr 5 min. Nitrogen cylinder reads 2350 psi.
Pump pressure is set at 50 psi. Recovered 0.1 feet of product at 19.64 gal. per foot since last visit.

Signature: Martin J. Nee

Date: April 2, 2003

AESE

906 San Juan Blvd. Ste. D
Farmington, NM 87401
505.566.9116(9120fax)

PRODUCT RECOVERY 4 water levels

Project Name San Juan Basin
Project Manager MTN
Client Company MWH
Site Name Lat 021

Project No. 220013
Date 3-27-03

Well	Time	Depth to Product (ft)	Depth to Water (ft)	Product Thickness (ft)	Volume Removed
MW-1	1250	No	35.96	No	See Below
MW-2	1259	No	33.45	No	No
MW-3	1310	No	34.49	No	No

Comments

No product found in MW-1.
bailed well to verify absence of
product

Signature _____

Date _____

AESE**PRODUCT RECOVERY**

906 San Juan Blvd. Ste. D
Farmington, NM 87401
505.566.9116(9120fax)

Project Name San Juan BasinProject No. 220013Project Manager MTNDate 3-26-03Client Company MWHSite Name JF Bell #1E

Well	Time	Depth to Product (ft)	Depth to Water (ft)	Product Thickness (ft)	Volume Removed
MW-1	0730	N2	N2	N2	.6 Gals
MW-3	0745	2882	2933	.51	.33
	-	No	3019		final

Comments MW-1 Replaced control box
replaced Nitrogen Tank

MW-3 bailed 2 gal water w/ product.

3 hrs tech time to replace
control box and nitrogen tank

Signature MRDate 3-26-03

Product Recovery and Well Observation Data

Project Name: San Joen Basin
 Project Manager: MJN
 Client Company: MWH
 Site Name: J.F. Bell

Project No: 220013
 Date: 3-19-03

Well	Time	Depth to Water (ft)	Depth to Product (ft)	Total Well Depth (ft)	Product Thickness (ft)	Volume Removed	Comments
MW-1	0708		1.65 BTOD			1.375	Length top of drum
MW-3	0736	2930	2882	No	.48'	.5	.5 gal
		30.17	No	finish	0		2 gal water

MW-1
 COMMENTS: Meter read 163 hr 48 min (Time since last visit)
 Nitrogen tank reads empty. There is still
 45 psi on pump. pump is set for 3 l/cx
 6cc/day.

3-12 1.72 BTOD

3-19 1.65 BTOD

.07' x 19.64 gal/ft = 1.375 gal

Signature: [Signature]

Date: 3-19-03

Product Recovery and Well Observation Data

Project Name: SAN Juan Basin
 Project Manager: MTN
 Client Company: MWH
 Site Name: JF Bell

Project No: 220013
 Date: 3-12-03

Well	Time	Depth to Water (ft)	Depth to Product (ft)	Total Well Depth (ft)	Product Thickness (ft)	Volume Removed	Comments
MW-1	1100		1.72 BTOD			.98g	see below
MW-3	1230	29.27	28.51		.48	.5	start
		29.81					finish

COMMENTS: MW-1 Depth to product beneath top of drum
last week was 1.77 - 1.72 this wk = .05' product
@ 19.64 gal/Pt = .98 gal rec. Nitrogen tank is almost
empty @ 300 psi. Replaced pressure switch to get clock
working. this did not fix the problem i tech will send
a new unit. Pump pressure @ 45 psi. 654/day 3 min x
MW-3 bailed 25 gal water for disp. @ Koke

Signature: MTN

Date: 3-13-03

Product Recovery and Well Observation Data

Project Name: San Juan Basin
 Project Manager: MTX
 Client Company: MWH
 Site Name: JF Bell

Project No: 220013
 Date: 3-6-03

Well	Time	Depth to Water (ft)	Depth to Product (ft)	Total Well Depth (ft)	Product Thickness (ft)	Volume Removed	Comments
MW-1	1218	N2	N2			1.375	See below
MW-3	Start	29.31	28.79		.52	.75	
	Finish	30.05	N2				

COMMENTS: 2/27 3/6
1.84 - 1.77 = .07 ft @ 19.64 gal/ft = 1.375 gal from MW-1
pump set @ 50 psi tank @ 450 psi

MW-3 REC .75 gal product 2 gal water

Signature: [Signature]

Date: 3-6-03

AESE**PRODUCT RECOVERY**

906 San Juan Blvd. Ste. D
Farmington, NM 87401
505.566.9116(9120fax)

Project Name San Juan BasinProject No. 220013Project Manager MTNDate 2-28-03Client Company MWHSite Name JFBell

Well	Time	Depth to Product (ft)	Depth to Water (ft)	Product Thickness (ft)	Volume Removed
MW-1	0800	1.84	N2	N2	0
MW-3	0850	2880	2931	.51	.6
		bailed approx 1.5 gal water w/ product			
MW-3		N2	2998	after bailing	

Comments MW1 Product depth 1.84 in drum
Same as last wk. No product recovered
May need to pull pump and check
product thickness in well and reset
pump. Tank pressure: 500 psi pump 50 psi
hinge broke on over spec drum maybe
due to cold temp.

Signature



Date

2-28-03

AESE**PRODUCT RECOVERY**

906 San Juan Blvd.Ste.D
Farmington, NM 87401
505.566.9116(9120fax)

Project Name SAN JUAN BASINProject No. 220013Project Manager MTNDate 2-20-03Client Company MWHSite Name JF Bell

Well	Time	Depth to Product (ft)	Depth to Water (ft)	Product Thickness (ft)	Volume Removed
MW-1	0745	1.84 (Drum)			3.34
MW-3	start	2877	2938	.61	1
	finish	2964	2969	.05	

MW-1
Comments Product depth $2/12 = 2.01$, therefore
.17' product recovered @ $19.64 \text{ gal/ft} = 3.34 \text{ gal}$
well pressure set @ 50 psi, 700 psi in tank

MW-3 removed 1 gal product & 1 gal water

Signature  Date 2-20-03

AESE**PRODUCT RECOVERY**

906 San Juan Blvd.Ste.D
Farmington, NM 87401
505.566.9116(9120fax)

Project Name San Juan BasinProject No. 220013Project Manager NceDate 2-12-03Client Company MWHSite Name JFBell

Well	Time	Depth to Product (ft)	Depth to Water (ft)	Product Thickness (ft)	Volume Removed
MW-1	1132	NA	NA	NA	1.375
MW-3	start	2933	2878	.55	0.8
		2962	2969	.07	

gallons

gallons

Comments MW-1, clock read 165/14 (hr/min) since last visit. Counter is not working. Product is @ 2.07 feet beneath to drum & 1.375 gal product recovered since last visit. changed pump settings to 6 c/y/day 3 min/cy from 3 c/y/day 10 min/cy

Signature



Date

2-13-03

Product Recovery and Well Observation Data

Project Name: San Juan Basin
 Project Manager: Nec
 Client Company: MWH
 Site Name: JF Bell

Project No: 220013
 Date: 2-5-03

Well	Time	Depth to Water (ft)	Depth to Product (ft)	Total Well Depth (ft)	Product Thickness (ft)	Volume Removed	Comments
MW-1	1418	NA	NA	NA	NA	2	2.08' to product in drum
MW-3	1438	2877	2829		.48	.66	Also removed 2-33 gal water final
		2974	2973				

COMMENTS: ^{hr min} MW-1 168.55 on counts (time since last visit) well set to 50 psi 1300 psi remaining intake. Back door to meter house had been pryed open, bent in half. Straightened out and closed door. Well recovered 2 gallons product since last visit.

Signature: [Signature]

Date: 2-5-03

Product Recovery and Well Observation Data

Project Name: San Juan Basin
 Project Manager: Nee
 Client Company: MWH
 Site Name: JF Bell

Project No: 220013
 Date: 1-29-03

Well	Time	Depth to Water (ft)	Depth to Product (ft)	Total Well Depth (ft)	Product Thickness (ft)	Volume Removed	Comments
MW-1	132	NA	NA	NA			
MW-3		29 34	28 76		.58' (.38 gal)	.75 gal	removed 2 gal water
		29 74	29 73				final

COMMENTS: MW-1 Product @ 2-18' BTO Drum (2.26 test vis. t)
 well made .12' product in drum approx equal to 2.36 gal
 counter not working, increased pump cycles to 3 per day.
 Pumpset @ 50 psi, 1700 psi in tank

Signature: [Signature]

Date: 1-29-03

Product Recovery and Well Observation Data

Project Name: El Paso San Juan Basin

Project No: 220073

Project Manager: Nee

Date: 1-22-02

Client Company: MWH

Site Name: JF Bell

[illegible]

COMMENTS: MW-3 Bailed 7 gal product 2-6 gallon
Skimmer has been out of the well for 1 wk

mw-1, br meter is counting time (total) since reset, not pumping time. DTP in drum is 0.8' BTOD drum is 2.8' high \therefore contains 39.18 gallons product. Siphoned 2 28.5 gal to tank. Then put 2 final DTP 2.26' BTOD = 10.5 gal

Signature: _____

Date:

1-22-03

Product Recovery and Well Observation Data

Project Name: San Juan River Basin

Project No: 220013

Project Manager: Delbert Beck's

Date: 1-15-03

Client Company: MWH

Site Name: San Juan River Plant JNB
JF BELL

Well	Time	Depth to Water (ft)	Depth to Product (ft)	Total Well Depth (ft)	Product Thickness (ft)	Volume Removed	Comments
MW-3	0945						pulled skimmer
MW-1	1030						barrel 2/3 full.

COMMENTS:

MW-3 1 1/2 gallon from skimmer - only film on top, grey colored water. Brought skimmer back to office for repair or replacement.

MW-3: 2 1/2 gallon of water bailed, .5 gallon of product recovered, reddish in color + strong odor slight in water.

MW-1; Timer at 191:49, reset to zero and turned off + on pump turned on + ran for 10 mins. (Timer set at 1 day x 10 min). Drum 2/3 full.

Signature: Delbert Beck's

Date: 1/15/03

Product Recovery and Well Observation Data

Project Name: San Juan River Basin
 Project Manager: Delbert Belis
 Client Company: MWH
 Site Name: JF BELL

Project No: 220013
 Date: 1/7/03

Well	Time	Depth to Water (ft)	Depth to Product (ft)	Total Well Depth (ft)	Product Thickness (ft)	Volume Removed	Comments
MW-3	0950	30.26	29.45		0.81		
MW-1	1030						2/3 full in product barrel.

COMMENTS:

MW-3 - 1 1/2 gallon of water from skimmer, grey in color, only green on top ~ 1 tbsp. Bailed 3 gallons of water, 1 gallon of which was product. Reddish in color. Sweet smelling, water had oily, black clumps in it, and was thick.

MW-1 60 psi & 2000 psi. Timer at 264:50, reset to 0:00 at 10:35 am. Product barrel approximately 2/3 full. Will need to empty next visit. Green light on system o.k.

Signature: Delbert Belis

Date: January 07, 2003