

NEW MEXICO OIL CONSERVATION COMMISSION
WELL LOCATION AND ACREAGE DEDICATION PLAT

Form C-102
Supersedes C-121
Effective 1-1-65

All distances must be from the outer boundaries of the Section.

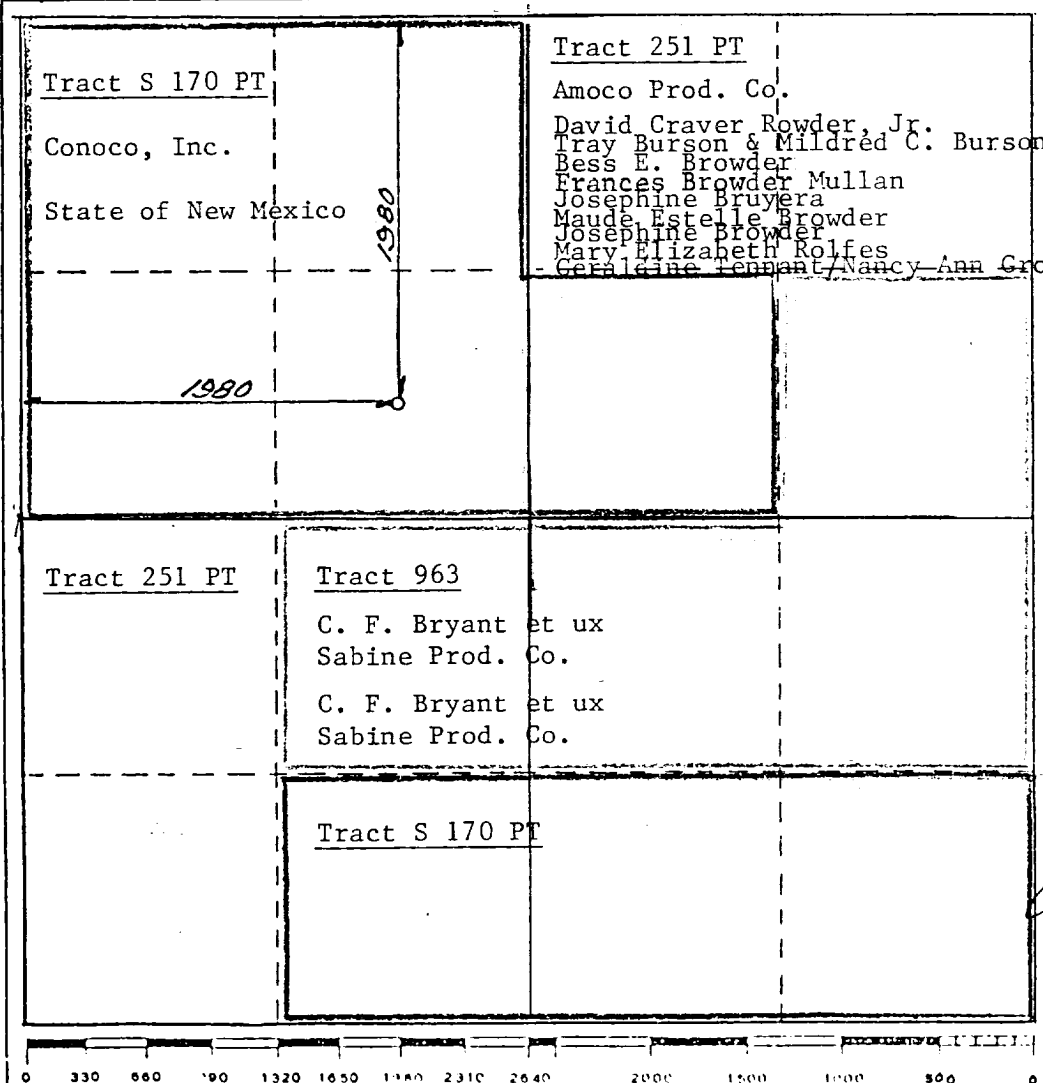
Operator AMOCO			Lease Bravo Dome Carbon Dioxide Gas Unit			Well No. 2333-251F		
Unit Letter F	Section 25	Township T23N	Range R33E	County UNION				
Actual Footage Location of Well: 1980 feet from the NORTH line and 1980 feet from the WEST line								
Ground Level Elev. 4920	Producing Formation Tubb			Pool Bravo Dome 640 Acre Area			Dedicated Acreage: 640 Acres	

1. Outline the acreage dedicated to the subject well by colored pencil or lachure marks on the plat below.
2. If more than one lease is dedicated to the well, outline each and identify the ownership thereof (both as to working interest and royalty).
3. If more than one lease of different ownership is dedicated to the well, have the interests of all owners been consolidated by communitization, unitization, force-pooling, etc?

Yes No If answer is "yes," type of consolidation Agreement or Forced Pooling

If answer is "no," list the owners and tract descriptions which have actually been consolidated. (Use reverse side of this form if necessary.) _____

No allowable will be assigned to the well until all interests have been consolidated (by communitization, unitization, forced-pooling, or otherwise) or until a non-standard unit, eliminating such interests, has been approved by the Commission.



CERTIFICATION

I hereby certify that the information contained herein is true and complete to the best of my knowledge and belief.

Name: John L. McElroy

Position: Asst. Adm. Analyst

Company: Amoco Production Company

Date: 9-12-84

I hereby certify that the well location shown on this plat was plotted from field notes of actual surveys made by me or under my supervision, and that the same is true and correct to the best of my knowledge and belief.

MARCH 10 1981

Date Surveyed: _____

David Shiller
Registered Professional Engineer
and/or Land Surveyor
N.M.L.S. NO. 5103

