



## **DELINEATION WORKPLAN**

### **OXY – SMOKEY BITS CTB (Leak Date: 4/18/17) & (Leak Date: 5/16/17)**

### **RP # 2RP-4179 & 2RP-4215 API # 30-015-39118**

---

This delineation workplan and remediation proposal addresses the release associated with RP # 2RP-4179 and 2RP-4215.

The following information includes:

1. Scaled digital site map with spill area demarcated and leak point identified along with sample point locations and areas of remediation at appropriate depths.
2. GPS information for sample points and sample methodology
3. Depth to groundwater information (i.e., pdf of OSE search results and/or copy of Chevron groundwater trend map).
4. Laboratory analysis results summary table and original laboratory analysis reports
5. A copy of the initial C-141
6. Potentially other pertinent information as necessary for site specific purposes.

***Based on the information included in this package and the NMOCD guidelines, the following remediation is proposed:***

***OXY will excavate the spill area as depicted on the following site diagram. The leak area shaded in green will be a 6 inch excavation. The area shaded in pink will be a 1 foot excavation and the shaded area in blue will be excavated to a depth of 3 feet.***

The entire site will then be backfilled with clean soil and revegetated (if warranted) to the standards of the appropriate regulatory agency or private surface owner.

All excavated materials will be disposed of at an NMOCD-approved disposal facility.



# Oxy, Smokey Bits CTB

Leak dates: 04/18/17 & 05/16/17

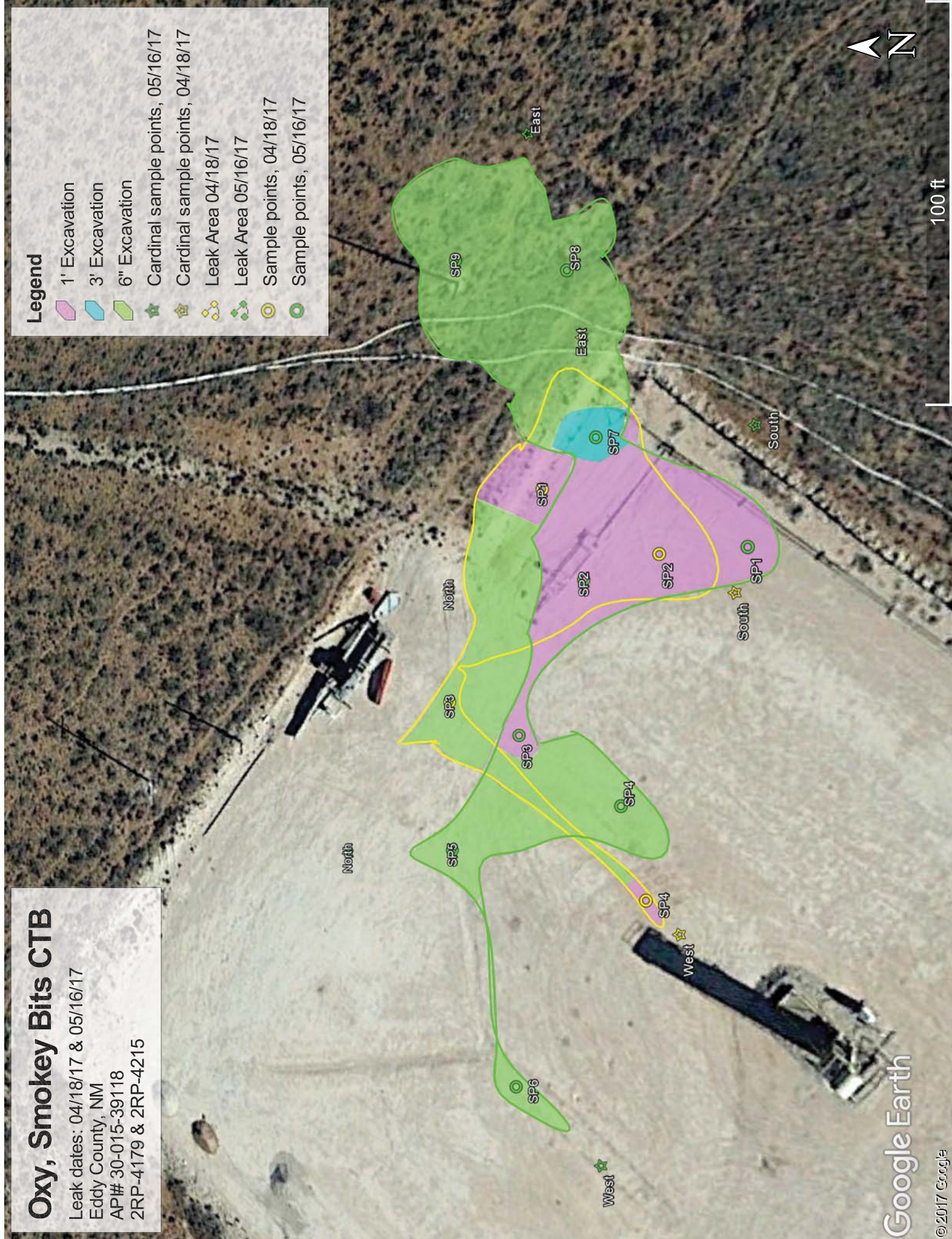
Eddy County, NM

API# 30-015-39118

2RP-4179 & 2RP-4215

## Legend

- 1' Excavation
- 3' Excavation
- 6" Excavation
- Cardinal sample points, 05/16/17
- Cardinal sample points, 04/18/17
- Leak Area 04/18/17
- Leak Area 05/16/17
- Sample points, 04/18/17
- Sample points, 05/16/17



Oxy, Smokey Bits CTB, Leak date: 4/18/17

Sample points, hand auger

SP1, N 32.70170 W-103.93251

SP2, N 32.70160 W-103.93257

SP3, N 32.70178 W-103.93271

SP4, N 32.70161 W-103.93288

NORTH, N 32.70178 W-103.93260

SOUTH, N 32.70155 W-103.93260

EAST, N 32.70166 W-103.93237

WEST, N 32.70159 W-103.93291

Oxy, Smokey Bits CTB, Leak date: 5/16/17

Sample points, hand auger

SP1, N 32.70153 W-103.93256

SP2, N 32.70167 W-103.93259

SP3, N 32.70172 W-103.93274

SP4, N 32.70163 W-103.93280

SP5, N 32.70178 W-103.93285

SP6, N 32.70172 W-103.93206

SP7, N 32.70165 W-103.93246

SP8, N 32.70167 W-103.93229

SP9, N 32.70177 W-103.93229

NORTH, N 32.70187 W-103.93286

SOUTH, N 32.70153 W-103.93246

EAST, N 32.70171 W-103.93218

WEST, N 32.70165 W-103.93312



**Oxy, Smokey Bits CTB**  
**U/L L, Section 36, T18S, R30E**  
**Groundwater: 150'-175'**





# New Mexico Office of the State Engineer

## Water Column/Average Depth to Water

(A CLW##### in the POD suffix indicates the POD has been replaced & no longer serves a water right file.)

(R=POD has been replaced,  
O=orphaned,

C=the file is closed)

(quarters are 1=NW 2=NE 3=SW 4=SE)

(quarters are smallest to largest)

(NAD83 UTM in meters)

(In feet)

POD Number	Code	POD Sub-basin	County	Q 64	Q 16	Q 4	Sec	Tws	Rng	X	Y	Distance	DepthWell	DepthWater	Water Column
<a href="#">CP 00767 POD1</a>		CP	ED	3	2	35	18S	30E		599300	3619158*	<input type="text"/>	900	500	

Average Depth to Water: --

Minimum Depth: --

Maximum Depth: --

Record Count: 1

### UTMNAD83 Radius Search (in meters):

Easting (X): 600109

Northing (Y): 3618763

Radius: 1700

\*UTM location was derived from PLSS - see Help

The data is furnished by the NMOSE/ISC and is accepted by the recipient with the expressed understanding that the OSE/ISC make no warranties, expressed or implied, concerning the accuracy, completeness, reliability, usability, or suitability for any particular purpose of the data.

4/26/17 9:40 AM

WATER COLUMN/ AVERAGE DEPTH TO WATER

Public Land Survey System (PLSS)

☐

Q64:

Q16:

NW

Q4:

SW

Sec:

36

Tws:

18S

Rng:

30E

State Plane Coordinate System - NAD27

☐

X:

0

ft

Y:

0

ft

Zone:

State Plane Coordinate System - NAD83

☐

X:

0

ft

Y:

0

ft

Zone:

Degrees/Minutes/Seconds

☐

Longitude (X):

Degrees:

0

°

Minutes:

0

'

Seconds:

0

"

Latitude (Y):

Degrees:

0

°

Minutes:

0

'

Seconds:

0

"

UTM - NAD27

☐

Easting (X):

0

mtrs

Northing (Y):

0

mtrs

Zone:

SUBMIT

All Conversion Results are displayed as NAD 1983 UTM Zone 13

Easting (X):

600109.0

mtrs

Northing (Y):

3618763.0

mtrs

~~ Please keep screen open to copy UTM values for Reports. ~~

http://nmwrrs.ose.state.nm.us/nmwrrs/ConvertUTMDispatcher[4/26/2017 9:39:20 AM]

## Laboratory Analytical Results Summary

		Sample		SP1 @ 1'	SP1 @ 2'	SP1 @ 7'	SP1 @ 12'
Analyte	Method	Date		mg/kg	mg/kg	5/1/17	5/1/17
Benzene	BTEX 8021B			<0.200	<0.050	<0.050	n/a
Toluene	BTEX 8021B			<b>2.56</b>	<0.050	<0.050	n/a
Ethylbenzene	BTEX 8021B			<b>7.99</b>	<0.050	<0.050	n/a
Total Xylenes	BTEX 8021B			<b>19.8</b>	<0.150	<0.150	n/a
Total BTEX	BTEX 8021B			<b>30.3</b>	<0.300	<0.300	n/a
Chloride	SM4500C1-B			<b>112</b>	<b>160</b>	<b>144</b>	<b>176</b>
GRO	TPH 8015M			<b>497</b>	<10.0	<10.0	n/a
DRO	TPH 8015M			<b>4000</b>	<10.0	<10.0	n/a

		Sample	SP2 @ 1'	SP2 @ 2'	SP2 @ 7'	SP2 @ 12'
Analyte	Method	Date	mg/kg	mg/kg	mg/kg	mg/kg
Benzene	BTEX 8021B		<0.050	<0.050	<0.050	n/a
Toluene	BTEX 8021B		<0.050	<0.050	<0.050	n/a
Ethylbenzene	BTEX 8021B		<0.050	<0.050	<0.050	n/a
Total Xylenes	BTEX 8021B		<0.150	<0.150	<0.150	n/a
Total BTEX	BTEX 8021B		<0.300	<0.300	<0.300	n/a
Chloride	SM4500C1-B		32	240	144	144
GRO	TPH 8015M		<10	<10.0	<10.0	n/a
DRO	TPH 8015M		165	<10.0	<10.0	n/a

		Sample		SP3 @ 1'	SP3 @ 2'	SP3 @ 7'	SP3 @ 12'
Analyte	Method	Date		mg/kg	mg/kg	mg/kg	mg/kg
Benzene	BTEX 8021B			<0.050	<0.050	<0.050	n/a
Toluene	BTEX 8021B			<0.050	<0.050	<0.050	n/a
Ethylbenzene	BTEX 8021B			<0.050	<0.050	<0.050	n/a
Total Xylenes	BTEX 8021B			<0.150	<0.150	<0.150	n/a
Total BTEX	BTEX 8021B			<0.300	<0.300	<0.300	n/a
Chloride	SM4500C1-B			32	160	176	160
GRO	TPH 8015M			<10.0	<10.0	<10.0	n/a
DRO	TPH 8015M			<10.0	<10.0	<10.0	n/a

		Sample	SP4 @ 1'	SP4 @ 2'	SP4 @ 3'	SP4 @ 4'	SP4 @ 9'	SP4 @ 14'
Analyte	Method	Date	mg/kg	mg/kg	mg/kg	mg/kg	mg/kg	mg/kg
Benzene	BTEX 8021B		<0.050	<0.050	<0.050	<0.050	<0.050	n/a
Toluene	BTEX 8021B		<0.050	<0.050	<0.050	<0.050	<0.050	n/a
Ethylbenz	BTEX 8021B		<0.050	<0.050	<0.050	<0.050	<0.050	n/a
Total Xylid	BTEX 8021B		<0.150	<0.150	<0.150	<0.150	<0.150	n/a
Total BTEX	BTEX 8021B		<0.300	<0.300	<0.300	<0.300	<0.300	n/a
Chloride	SM4500C-B		3920	128	144	128	160	144
GRO	TPH 8015M		<10.0	<10.0	<10.0	<10.0	<10.0	n/a
DRO	TPH 8015M		<10.0	<10.0	<10.0	<10.0	<10.0	n/a

		Sample	NORTH @ SURFACE 5/11/17 mg/kg	EAST @ SURFACE 5/11/17 mg/kg	SOUTH @ SURFACE 5/11/17 mg/kg	WEST @ SURFACE 5/11/17 mg/kg
Analyte	Method	Date				
Benzene	BTEX 8021B		<0.050	<0.050	<0.050	<0.050
Toluene	BTEX 8021B		<0.050	<0.050	<0.050	<0.050
Ethylbenz	BTEX 8021B		<0.050	<0.050	<0.050	<0.050
Total Xyld	BTEX 8021B		<0.150	<0.150	<0.150	<0.150
Total BTEX	BTEX 8021B		<0.300	<0.300	<0.300	<0.300
Chloride	SM4500Cl-B		176	160	144	144
GRO	TPH 8015M		<10.0	<10.0	<10.0	<10.0
DRO	TPH 8015M		<10.0	<10.0	<10.0	<10.0

Laboratory Analytical Results Summary  
Smokey Bits CTB

Analyte	Method	Sample		SP1 @ 1'	SP1 @ 2'	SP1 @ 7'	SP1 @ 12'
		Date		5/31/17	5/31/17	5/31/17	5/31/17
Benzene	BTEX 8021B			mg/kg	mg/kg	mg/kg	mg/kg
				<0.050	<0.050	<0.050	<0.050
Toluene	BTEX 8021B			0.139	<0.050	<0.050	<0.050
Ethylbenzene	BTEX 8021B			0.422	<0.050	<0.050	<0.050
Total Xylenes	BTEX 8021B			1.26	<0.150	<0.150	<0.150
Total BTEX	BTEX 8021B			1.82	<0.300	<0.300	<0.300
Chloride	SM4500C1-B			864	528	688	112
GRO	TPH 8015M			46	<10.0	<10.0	<10.0
DRO	TPH 8015M			841	<10.0	32.2	<10.0

Analyte	Method	Sample		SP2 @ 1'	SP2 @ 3'	SP2 @ 9'	SP2 @ 14'
		Date		5/30/17	5/30/17	5/30/17	5/30/17
Benzene	BTEX 8021B			mg/kg	mg/kg	mg/kg	mg/kg
				0.399	<0.050	<0.050	<0.050
Toluene	BTEX 8021B			106	<0.050	<0.050	<0.050
Ethylbenzene	BTEX 8021B			15.7	0.064	<0.050	<0.050
Total Xylenes	BTEX 8021B			35.5	0.154	<0.150	<0.150
Total BTEX	BTEX 8021B			62.3	<0.300	<0.300	<0.300
Chloride	SM4500C1-B			752	816	160	160
GRO	TPH 8015M			898	<10.0	<10.0	<10.0
DRO	TPH 8015M			10800	144	68.4	65.9

Analyte	Method	Sample		SP3 @ 1'	SP3 @ 3'	SP3 @ 5'	SP3 @ 10'	SP3 @ 15'
		Date		5/30/17	5/30/17	5/30/17	5/30/17	5/30/17
Benzene	BTEX 8021B			mg/kg	mg/kg	mg/kg	mg/kg	mg/kg
				0.388	<0.050	<0.050	<0.050	<0.050
Toluene	BTEX 8021B			10.6	<0.050	<0.050	<0.050	<0.050
Ethylbenzene	BTEX 8021B			14.7	<0.050	<0.050	<0.050	<0.050
Total Xylenes	BTEX 8021B			34.9	<0.150	<0.150	<0.150	<0.150
Total BTEX	BTEX 8021B			60.6	<0.300	<0.300	<0.300	<0.300
Chloride	SM4500C1-B			560	880	320	144	176
GRO	TPH 8015M			818	<10.0	<10.0	<10.0	<10.0
DRO	TPH 8015M			12500	99.2	<10.0	53.9	45.8

Analyte	Method	Sample		SP4 @ 1'	SP4 @ 2'	SP4 @ 7'	SP4 @ 12'
		Date		5/31/17	5/31/17	5/31/17	5/31/17
Benzene	BTEX 8021B			mg/kg	mg/kg	mg/kg	mg/kg
				<0.050	<0.050	<0.050	<0.050
Toluene	BTEX 8021B			<0.050	<0.050	<0.050	<0.050
Ethylbenzene	BTEX 8021B			<0.050	<0.050	<0.050	<0.050
Total Xylenes	BTEX 8021B			<0.150	<0.150	<0.150	<0.150
Total BTEX	BTEX 8021B			<0.300	<0.300	<0.300	<0.300
Chloride	SM4500C1-B			352	96	48	208
GRO	TPH 8015M			<10.0	<10.0	<10.0	<10.0
DRO	TPH 8015M			34.5	<10.0	<10.0	38.4

Analyte	Method	Sample		SP5 @ 1'	SP5 @ 2'	SP5 @ 7'	SP5 @ 12'
		Date		5/31/17	5/31/17	5/31/17	5/31/17
Benzene	BTEX 8021B			mg/kg	mg/kg	mg/kg	mg/kg
				<0.050	<0.050	<0.050	<0.050
Toluene	BTEX 8021B			<0.050	<0.050	<0.050	<0.050
Ethylbenzene	BTEX 8021B			<0.050	<0.050	<0.050	<0.050
Total Xylenes	BTEX 8021B			<0.150	<0.150	<0.150	<0.150
Total BTEX	BTEX 8021B			<0.300	<0.300	<0.300	<0.300
Chloride	SM4500C1-B			400	80	64	192
GRO	TPH 8015M			<10.0	<10.0	<10.0	<10.0
DRO	TPH 8015M			21	<10.0	<10.0	37.1

Analyte	Method	Sample		SP6 @ 1'	SP6 @ 2'	SP6 @ 3'	SP6 @ 8'	SP6 @ 13'
		Date		5/31/17	5/31/17	5/31/17	5/31/17	5/31/17
Benzene	BTEX 8021B			mg/kg	mg/kg	mg/kg	mg/kg	mg/kg
				<0.050	<0.050	<0.050	<0.050	<0.050
Toluene	BTEX 8021B			<0.050	<0.050	<0.050	<0.050	<0.050
Ethylbenzene	BTEX 8021B			<0.050	<0.050	<0.050	<0.050	<0.050
Total Xylenes	BTEX 8021B			<0.150	<0.150	<0.150	<0.150	<0.150
Total BTEX	BTEX 8021B			<0.300	<0.300	<0.300	<0.300	<0.300
Chloride	SM4500C1-B			80	32	<16.0	96	96
GRO	TPH 8015M			<10.0	<10.0	<10.0	<10.0	<10.0
DRO	TPH 8015M			127	88	<10.0	<10.0	<10.0

Analyte	Method	Sample		SP7 @ 1'	SP7 @ 2'	SP7 @ 4'	SP7 @ 9'	SP7 @ 16'
		Date		5/31/17	5/31/17	5/31/17	5/31/17	5/31/17
Benzene	BTEX 8021B			mg/kg	mg/kg	mg/kg	mg/kg	mg/kg
				0.417	0.345	<0.050	<0.050	<0.050
Toluene	BTEX 8021B			10.6	10.1	0.994	<0.050	<0.050
Ethylbenzene	BTEX 8021B			15.4	21.3	1.84	<0.050	<0.050
Total Xylenes	BTEX 8021B			35.4	51.5	4.31	<0.150	<0.150
Total BTEX	BTEX 8021B			61.9	83.2	7.14	<0.300	<0.300
Chloride	SM4500C1-B			176	<16.0	<16.0	32	48
GRO	TPH 8015M			841	<16.0	126	<10.0	<10.0
DRO	TPH 8015M			10800	12700	3270	<10.0	244

Analyte	Method	Sample		SP8 @ SURFACE	SP8 @ 6"	SP8 @ 1'
		Date		5/31/17	5/31/17	5/31/17
Benzene	BTEX 8021B			mg/kg	mg/kg	mg/kg
				0.198	<0.050	<0.050
Toluene	BTEX 8021B			4.35	0.13	0.063
Ethylbenzene	BTEX 8021B			6.74	0.258	0.082
Total Xylenes	BTEX 8021B			16.1	0.817	0.302
Total BTEX	BTEX 8021B			27.3	1.2	0.447
Chloride	SM4500C1-B			32	48	32
GRO	TPH 8015M			328	13.6	<10.0
DRO	TPH 8015M			4830	397	114



Analyte	Method	Sample Date	SP9 @ SURFACE	SP9 @ 6"	SP9 @ 1'
			mg/kg	mg/kg	mg/kg
Benzene	BTEX 8021B		0.168	<0.050	<0.050
Toluene	BTEX 8021B		3.48	0.089	<0.050
Ethylbenzene	BTEX 8021B		4.95	0.121	<0.050
Total Xylenes	BTEX 8021B		12.4	0.445	<0.150
Total BTEX	BTEX 8021B		21	0.656	<0.300
Chloride	SM4500Cl-B		48	32	64
GRO	TPH 8015M		233	<10.0	<10.0
DRO	TPH 8015M		3650	310	56.3

Analyte	Method	Sample Date	North @ SURFACE
			mg/kg
Benzene	BTEX 8021B		<0.050
Toluene	BTEX 8021B		1.29
Ethylbenzene	BTEX 8021B		1.94
Total Xylenes	BTEX 8021B		4.39
Total BTEX	BTEX 8021B		7.62
Chloride	SM4500Cl-B		96
GRO	TPH 8015M		68.4
DRO	TPH 8015M		115

Analyte	Method	Sample Date	East @ SURFACE
			mg/kg
Benzene	BTEX 8021B		<0.050
Toluene	BTEX 8021B		1.19
Ethylbenzene	BTEX 8021B		1.78
Total Xylenes	BTEX 8021B		4.04
Total BTEX	BTEX 8021B		7.02
Chloride	SM4500Cl-B		80
GRO	TPH 8015M		46.8
DRO	TPH 8015M		168

Analyte	Method	Sample Date	West @ SURFACE
			mg/kg
Benzene	BTEX 8021B		<0.050
Toluene	BTEX 8021B		1.11
Ethylbenzene	BTEX 8021B		1.79
Total Xylenes	BTEX 8021B		4.11
Total BTEX	BTEX 8021B		7.02
Chloride	SM4500Cl-B		80
GRO	TPH 8015M		58.4
DRO	TPH 8015M		131

Analyte	Method	Sample Date	South @ SURFACE
			mg/kg
Benzene	BTEX 8021B		<0.050
Toluene	BTEX 8021B		1
Ethylbenzene	BTEX 8021B		2.27
Total Xylenes	BTEX 8021B		5.5
Total BTEX	BTEX 8021B		8.78
Chloride	SM4500Cl-B		80
GRO	TPH 8015M		69.1
DRO	TPH 8015M		227

May 15, 2017

Cliff Brunson

BBC International, Inc.

P.O. Box 805

Hobbs, NM 88241

RE: SMOKEY BITS

Enclosed are the results of analyses for samples received by the laboratory on 05/05/17 10:40.

Cardinal Laboratories is accredited through Texas NELAP under certificate number T104704398-16-8. Accreditation applies to drinking water, non-potable water and solid and chemical materials. All accredited analytes are denoted by an asterisk (\*). For a complete list of accredited analytes and matrices visit the TCEQ website at [www.tceq.texas.gov/field/qa/lab\\_accred\\_certif.html](http://www.tceq.texas.gov/field/qa/lab_accred_certif.html).

Cardinal Laboratories is accredited through the State of Colorado Department of Public Health and Environment for:

Method EPA 552.2	Haloacetic Acids (HAA-5)
Method EPA 524.2	Total Trihalomethanes (TTHM)
Method EPA 524.4	Regulated VOCs (V1, V2, V3)

Accreditation applies to public drinking water matrices.

This report meets NELAP requirements and is made up of a cover page, analytical results, and a copy of the original chain-of-custody. If you have any questions concerning this report, please feel free to contact me.

Sincerely,



Celey D. Keene

Lab Director/Quality Manager

**Analytical Results For:**

BBC International, Inc.  
Cliff Brunson  
P.O. Box 805  
Hobbs NM, 88241  
Fax To: (575) 397-0397

Received: 05/05/2017  
Reported: 05/15/2017  
Project Name: SMOKEY BITS  
Project Number: NONE GIVEN  
Project Location: NOT GIVEN

Sampling Date: 05/01/2017  
Sampling Type: Soil  
Sampling Condition: Cool & Intact  
Sample Received By: Tamara Oldaker

**Sample ID: 1 @ 1' (H701214-01)**

BTX 8021B		mg/kg		Analyzed By: BF					
Analyte	Result	Reporting Limit	Analyzed	Method Blank	BS	% Recovery	True Value QC	RPD	Qualifier
Benzene*	<0.200	0.200	05/11/2017	ND	2.11	106	2.00	0.434	
<b>Toluene*</b>	<b>2.56</b>	0.200	05/11/2017	ND	2.11	105	2.00	0.179	
<b>Ethylbenzene*</b>	<b>7.99</b>	0.200	05/11/2017	ND	2.08	104	2.00	0.0550	
<b>Total Xylenes*</b>	<b>19.8</b>	0.600	05/11/2017	ND	6.21	103	6.00	0.209	
<b>Total BTX</b>	<b>30.3</b>	1.20	05/11/2017	ND					

Surrogate: 4-Bromofluorobenzene (PID) 127 % 72-148

Chloride, SM4500Cl-B		mg/kg		Analyzed By: AC					
Analyte	Result	Reporting Limit	Analyzed	Method Blank	BS	% Recovery	True Value QC	RPD	Qualifier
<b>Chloride</b>	<b>112</b>	16.0	05/09/2017	ND	448	112	400	3.64	

TPH 8015M		mg/kg		Analyzed By: MS					
Analyte	Result	Reporting Limit	Analyzed	Method Blank	BS	% Recovery	True Value QC	RPD	Qualifier
<b>GRO C6-C10</b>	<b>497</b>	50.0	05/09/2017	ND	175	87.7	200	2.62	
<b>DRO &gt;C10-C28</b>	<b>4000</b>	50.0	05/09/2017	ND	181	90.6	200	4.90	

Surrogate: 1-Chlorooctane 123 % 28.3-164

Surrogate: 1-Chlorooctadecane 124 % 34.7-157

Cardinal Laboratories

\*=Accredited Analyte

PLEASE NOTE: Liability and Damages. Cardinal's liability and client's exclusive remedy for any claim arising, whether based in contract or tort, shall be limited to the amount paid by client for analyses. All claims, including those for negligence and any other cause whatsoever shall be deemed waived unless made in writing and received by Cardinal within thirty (30) days after completion of the applicable service. In no event shall Cardinal be liable for incidental or consequential damages, including, without limitation, business interruptions, loss of use, or loss of profits incurred by client, its subsidiaries, affiliates or successors arising out of or related to the performance of the services hereunder by Cardinal, regardless of whether such claim is based upon any of the above stated reasons or otherwise. Results relate only to the samples identified above. This report shall not be reproduced except in full with written approval of Cardinal Laboratories.



Celey D. Keene, Lab Director/Quality Manager

**Analytical Results For:**

BBC International, Inc.  
Cliff Brunson  
P.O. Box 805  
Hobbs NM, 88241  
Fax To: (575) 397-0397

Received: 05/05/2017  
Reported: 05/15/2017  
Project Name: SMOKEY BITS  
Project Number: NONE GIVEN  
Project Location: NOT GIVEN

Sampling Date: 05/01/2017  
Sampling Type: Soil  
Sampling Condition: Cool & Intact  
Sample Received By: Tamara Oldaker

**Sample ID: 1 @ 2' (H701214-02)**

BTEx 8021B		mg/kg		Analyzed By: BF					
Analyte	Result	Reporting Limit	Analyzed	Method Blank	BS	% Recovery	True Value QC	RPD	Qualifier
Benzene*	<0.050	0.050	05/11/2017	ND	2.11	106	2.00	0.434	
Toluene*	<0.050	0.050	05/11/2017	ND	2.11	105	2.00	0.179	
Ethylbenzene*	<0.050	0.050	05/11/2017	ND	2.08	104	2.00	0.0550	
Total Xylenes*	<0.150	0.150	05/11/2017	ND	6.21	103	6.00	0.209	
Total BTEx	<0.300	0.300	05/11/2017	ND					

Surrogate: 4-Bromofluorobenzene (PID) 129 % 72-148

Chloride, SM4500CI-B		mg/kg		Analyzed By: AC					
Analyte	Result	Reporting Limit	Analyzed	Method Blank	BS	% Recovery	True Value QC	RPD	Qualifier
Chloride	160	16.0	05/09/2017	ND	448	112	400	3.64	

TPH 8015M		mg/kg		Analyzed By: MS					
Analyte	Result	Reporting Limit	Analyzed	Method Blank	BS	% Recovery	True Value QC	RPD	Qualifier
GRO C6-C10	<10.0	10.0	05/09/2017	ND	175	87.7	200	2.62	
DRO >C10-C28	<10.0	10.0	05/09/2017	ND	181	90.6	200	4.90	

Surrogate: 1-Chlorooctane 74.6 % 28.3-164

Surrogate: 1-Chlorooctadecane 72.1 % 34.7-157

Cardinal Laboratories

\*=Accredited Analyte

PLEASE NOTE: Liability and Damages. Cardinal's liability and client's exclusive remedy for any claim arising, whether based in contract or tort, shall be limited to the amount paid by client for analyses. All claims, including those for negligence and any other cause whatsoever shall be deemed waived unless made in writing and received by Cardinal within thirty (30) days after completion of the applicable service. In no event shall Cardinal be liable for incidental or consequential damages, including, without limitation, business interruptions, loss of use, or loss of profits incurred by client, its subsidiaries, affiliates or successors arising out of or related to the performance of the services hereunder by Cardinal, regardless of whether such claim is based upon any of the above stated reasons or otherwise. Results relate only to the samples identified above. This report shall not be reproduced except in full with written approval of Cardinal Laboratories.



Celey D. Keene, Lab Director/Quality Manager



**Analytical Results For:**

BBC International, Inc.  
Cliff Brunson  
P.O. Box 805  
Hobbs NM, 88241  
Fax To: (575) 397-0397

Received:	05/05/2017	Sampling Date:	05/01/2017
Reported:	05/15/2017	Sampling Type:	Soil
Project Name:	SMOKEY BITS	Sampling Condition:	Cool & Intact
Project Number:	NONE GIVEN	Sample Received By:	Tamara Oldaker
Project Location:	NOT GIVEN		

**Sample ID: 1 @ 7' (H701214-03)**

BTEx 8021B		mg/kg		Analyzed By: BF					
Analyte	Result	Reporting Limit	Analyzed	Method Blank	BS	% Recovery	True Value QC	RPD	Qualifier
Benzene*	<0.050	0.050	05/11/2017	ND	2.11	106	2.00	0.434	
Toluene*	<0.050	0.050	05/11/2017	ND	2.11	105	2.00	0.179	
Ethylbenzene*	<0.050	0.050	05/11/2017	ND	2.08	104	2.00	0.0550	
Total Xylenes*	<0.150	0.150	05/11/2017	ND	6.21	103	6.00	0.209	
Total BTEx	<0.300	0.300	05/11/2017	ND					

Surrogate: 4-Bromofluorobenzene (PID) 127 % 72-148

Chloride, SM4500CI-B		mg/kg		Analyzed By: AC					
Analyte	Result	Reporting Limit	Analyzed	Method Blank	BS	% Recovery	True Value QC	RPD	Qualifier
Chloride	144	16.0	05/09/2017	ND	448	112	400	3.64	

TPH 8015M		mg/kg		Analyzed By: MS					
Analyte	Result	Reporting Limit	Analyzed	Method Blank	BS	% Recovery	True Value QC	RPD	Qualifier
GRO C6-C10	<10.0	10.0	05/09/2017	ND	175	87.7	200	2.62	
DRO >C10-C28	<10.0	10.0	05/09/2017	ND	181	90.6	200	4.90	

Surrogate: 1-Chlorooctane 91.2 % 28.3-164

Surrogate: 1-Chlorooctadecane 91.3 % 34.7-157

**Sample ID: 1 @ 12' (H701214-04)**

Chloride, SM4500Cl-B		mg/kg		Analyzed By: AC					
Analyte	Result	Reporting Limit	Analyzed	Method Blank	BS	% Recovery	True Value QC	RPD	Qualifier
Chloride	176	16.0	05/09/2017	ND	448	112	400	3.64	

Cardinal Laboratories

\*=Accredited Analyte

PLEASE NOTE: Liability and Damages. Cardinal's liability and client's exclusive remedy for any claim arising, whether based in contract or tort, shall be limited to the amount paid by client for analyses. All claims, including those for negligence and any other cause whatsoever shall be deemed waived unless made in writing and received by Cardinal within thirty (30) days after completion of the applicable service. In no event shall Cardinal be liable for incidental or consequential damages, including, without limitation, business interruptions, loss of use, or loss of profits incurred by client, its subsidiaries, affiliates or successors arising out of or related to the performance of the services hereunder by Cardinal, regardless of whether such claim is based upon any of the above stated reasons or otherwise. Results relate only to the samples identified above. This report shall not be reproduced except in full with written approval of Cardinal Laboratories.



Celey D. Keene, Lab Director/Quality Manager

**Analytical Results For:**

BBC International, Inc.  
Cliff Brunson  
P.O. Box 805  
Hobbs NM, 88241  
Fax To: (575) 397-0397

Received: 05/05/2017  
Reported: 05/15/2017  
Project Name: SMOKEY BITS  
Project Number: NONE GIVEN  
Project Location: NOT GIVEN

Sampling Date: 05/01/2017  
Sampling Type: Soil  
Sampling Condition: Cool & Intact  
Sample Received By: Tamara Oldaker

**Sample ID: 2 @ 1' (H701214-05)**

BTEx 8021B		mg/kg		Analyzed By: BF					
Analyte	Result	Reporting Limit	Analyzed	Method Blank	BS	% Recovery	True Value QC	RPD	Qualifier
Benzene*	<0.050	0.050	05/11/2017	ND	2.11	106	2.00	0.434	
Toluene*	<0.050	0.050	05/11/2017	ND	2.11	105	2.00	0.179	
Ethylbenzene*	<0.050	0.050	05/11/2017	ND	2.08	104	2.00	0.0550	
Total Xylenes*	<0.150	0.150	05/11/2017	ND	6.21	103	6.00	0.209	
Total BTEx	<0.300	0.300	05/11/2017	ND					

Surrogate: 4-Bromofluorobenzene (PID) 128 % 72-148

Chloride, SM4500Cl-B		mg/kg		Analyzed By: AC					
Analyte	Result	Reporting Limit	Analyzed	Method Blank	BS	% Recovery	True Value QC	RPD	Qualifier
Chloride	32.0	16.0	05/09/2017	ND	448	112	400	3.64	

TPH 8015M		mg/kg		Analyzed By: MS					
Analyte	Result	Reporting Limit	Analyzed	Method Blank	BS	% Recovery	True Value QC	RPD	Qualifier
GRO C6-C10	<10.0	10.0	05/09/2017	ND	175	87.7	200	2.62	
DRO >C10-C28	165	10.0	05/09/2017	ND	181	90.6	200	4.90	

Surrogate: 1-Chlorooctane 81.7 % 28.3-164

Surrogate: 1-Chlorooctadecane 83.7 % 34.7-157

Cardinal Laboratories

\*=Accredited Analyte

PLEASE NOTE: Liability and Damages. Cardinal's liability and client's exclusive remedy for any claim arising, whether based in contract or tort, shall be limited to the amount paid by client for analyses. All claims, including those for negligence and any other cause whatsoever shall be deemed waived unless made in writing and received by Cardinal within thirty (30) days after completion of the applicable service. In no event shall Cardinal be liable for incidental or consequential damages, including, without limitation, business interruptions, loss of use, or loss of profits incurred by client, its subsidiaries, affiliates or successors arising out of or related to the performance of the services hereunder by Cardinal, regardless of whether such claim is based upon any of the above stated reasons or otherwise. Results relate only to the samples identified above. This report shall not be reproduced except in full with written approval of Cardinal Laboratories.



Celey D. Keene, Lab Director/Quality Manager

**Analytical Results For:**

BBC International, Inc.  
Cliff Brunson  
P.O. Box 805  
Hobbs NM, 88241  
Fax To: (575) 397-0397

Received: 05/05/2017  
Reported: 05/15/2017  
Project Name: SMOKEY BITS  
Project Number: NONE GIVEN  
Project Location: NOT GIVEN

Sampling Date: 05/01/2017  
Sampling Type: Soil  
Sampling Condition: Cool & Intact  
Sample Received By: Tamara Oldaker

**Sample ID: 2 @ 2' (H701214-06)**

BTEx 8021B		mg/kg		Analyzed By: BF					
Analyte	Result	Reporting Limit	Analyzed	Method Blank	BS	% Recovery	True Value QC	RPD	Qualifier
Benzene*	<0.050	0.050	05/11/2017	ND	2.11	106	2.00	0.434	
Toluene*	<0.050	0.050	05/11/2017	ND	2.11	105	2.00	0.179	
Ethylbenzene*	<0.050	0.050	05/11/2017	ND	2.08	104	2.00	0.0550	
Total Xylenes*	<0.150	0.150	05/11/2017	ND	6.21	103	6.00	0.209	
Total BTEx	<0.300	0.300	05/11/2017	ND					

Surrogate: 4-Bromofluorobenzene (PID) 127 % 72-148

Chloride, SM4500CI-B		mg/kg		Analyzed By: AC					
Analyte	Result	Reporting Limit	Analyzed	Method Blank	BS	% Recovery	True Value QC	RPD	Qualifier
Chloride	240	16.0	05/09/2017	ND	448	112	400	3.64	

TPH 8015M		mg/kg		Analyzed By: MS					
Analyte	Result	Reporting Limit	Analyzed	Method Blank	BS	% Recovery	True Value QC	RPD	Qualifier
GRO C6-C10	<10.0	10.0	05/09/2017	ND	175	87.7	200	2.62	
DRO >C10-C28	<10.0	10.0	05/09/2017	ND	181	90.6	200	4.90	

Surrogate: 1-Chlorooctane 75.3 % 28.3-164

Surrogate: 1-Chlorooctadecane 73.6 % 34.7-157

Cardinal Laboratories

\*=Accredited Analyte

PLEASE NOTE: Liability and Damages. Cardinal's liability and client's exclusive remedy for any claim arising, whether based in contract or tort, shall be limited to the amount paid by client for analyses. All claims, including those for negligence and any other cause whatsoever shall be deemed waived unless made in writing and received by Cardinal within thirty (30) days after completion of the applicable service. In no event shall Cardinal be liable for incidental or consequential damages, including, without limitation, business interruptions, loss of use, or loss of profits incurred by client, its subsidiaries, affiliates or successors arising out of or related to the performance of the services hereunder by Cardinal, regardless of whether such claim is based upon any of the above stated reasons or otherwise. Results relate only to the samples identified above. This report shall not be reproduced except in full with written approval of Cardinal Laboratories.



Celey D. Keene, Lab Director/Quality Manager

**Analytical Results For:**

BBC International, Inc.  
Cliff Brunson  
P.O. Box 805  
Hobbs NM, 88241  
Fax To: (575) 397-0397

Received:	05/05/2017	Sampling Date:	05/01/2017
Reported:	05/15/2017	Sampling Type:	Soil
Project Name:	SMOKEY BITS	Sampling Condition:	Cool & Intact
Project Number:	NONE GIVEN	Sample Received By:	Tamara Oldaker
Project Location:	NOT GIVEN		

**Sample ID: 2 @ 7' (H701214-07)**

BTEx 8021B		mg/kg		Analyzed By: BF					
Analyte	Result	Reporting Limit	Analyzed	Method Blank	BS	% Recovery	True Value QC	RPD	Qualifier
Benzene*	<0.050	0.050	05/11/2017	ND	2.11	106	2.00	0.434	
Toluene*	<0.050	0.050	05/11/2017	ND	2.11	105	2.00	0.179	
Ethylbenzene*	<0.050	0.050	05/11/2017	ND	2.08	104	2.00	0.0550	
Total Xylenes*	<0.150	0.150	05/11/2017	ND	6.21	103	6.00	0.209	
Total BTEX	<0.300	0.300	05/11/2017	ND					

Surrogate: 4-Bromofluorobenzene (PID) 125 % 72-148

Chloride, SM4500Cl-B		mg/kg		Analyzed By: AC					
Analyte	Result	Reporting Limit	Analyzed	Method Blank	BS	% Recovery	True Value QC	RPD	Qualifier
Chloride	144	16.0	05/09/2017	ND	400	100	400	3.92	

TPH 8015M		mg/kg		Analyzed By: MS					
Analyte	Result	Reporting Limit	Analyzed	Method Blank	BS	% Recovery	True Value QC	RPD	Qualifier
GRO C6-C10	<10.0	10.0	05/09/2017	ND	175	87.7	200	2.62	
DRO >C10-C28	<10.0	10.0	05/09/2017	ND	181	90.6	200	4.90	

Surrogate: 1-Chlorooctane 87.6 % 28.3-164

Surrogate: 1-Chlorooctadecane 88.9 % 34.7-157

**Sample ID: 2 @ 12' (H701214-08)**

Chloride, SM4500Cl-B		mg/kg		Analyzed By: AC					
Analyte	Result	Reporting Limit	Analyzed	Method Blank	BS	% Recovery	True Value QC	RPD	Qualifier
Chloride	144	16.0	05/09/2017	ND	400	100	400	3.92	

Cardinal Laboratories

\*=Accredited Analyte

PLEASE NOTE: Liability and Damages. Cardinal's liability and client's exclusive remedy for any claim arising, whether based in contract or tort, shall be limited to the amount paid by client for analyses. All claims, including those for negligence and any other cause whatsoever shall be deemed waived unless made in writing and received by Cardinal within thirty (30) days after completion of the applicable service. In no event shall Cardinal be liable for incidental or consequential damages, including, without limitation, business interruptions, loss of use, or loss of profits incurred by client, its subsidiaries, affiliates or successors arising out of or related to the performance of the services hereunder by Cardinal, regardless of whether such claim is based upon any of the above stated reasons or otherwise. Results relate only to the samples identified above. This report shall not be reproduced except in full with written approval of Cardinal Laboratories.



Celey D. Keene, Lab Director/Quality Manager



**Analytical Results For:**

BBC International, Inc.  
Cliff Brunson  
P.O. Box 805  
Hobbs NM, 88241  
Fax To: (575) 397-0397

Received: 05/05/2017  
Reported: 05/15/2017  
Project Name: SMOKEY BITS  
Project Number: NONE GIVEN  
Project Location: NOT GIVEN

Sampling Date: 05/01/2017  
Sampling Type: Soil  
Sampling Condition: Cool & Intact  
Sample Received By: Tamara Oldaker

**Sample ID: 3 @ 1' (H701214-09)**

BTEx 8021B		mg/kg		Analyzed By: BF					
Analyte	Result	Reporting Limit	Analyzed	Method Blank	BS	% Recovery	True Value QC	RPD	Qualifier
Benzene*	<0.050	0.050	05/11/2017	ND	2.11	106	2.00	0.434	
Toluene*	<0.050	0.050	05/11/2017	ND	2.11	105	2.00	0.179	
Ethylbenzene*	<0.050	0.050	05/11/2017	ND	2.08	104	2.00	0.0550	
Total Xylenes*	<0.150	0.150	05/11/2017	ND	6.21	103	6.00	0.209	
Total BTEx	<0.300	0.300	05/11/2017	ND					

Surrogate: 4-Bromofluorobenzene (PID) 127 % 72-148

Chloride, SM4500Cl-B		mg/kg		Analyzed By: AC					
Analyte	Result	Reporting Limit	Analyzed	Method Blank	BS	% Recovery	True Value QC	RPD	Qualifier
Chloride	32.0	16.0	05/09/2017	ND	400	100	400	3.92	

TPH 8015M		mg/kg		Analyzed By: MS					
Analyte	Result	Reporting Limit	Analyzed	Method Blank	BS	% Recovery	True Value QC	RPD	Qualifier
GRO C6-C10	<10.0	10.0	05/09/2017	ND	175	87.7	200	2.62	
DRO >C10-C28	<10.0	10.0	05/09/2017	ND	181	90.6	200	4.90	

Surrogate: 1-Chlorooctane 92.4 % 28.3-164

Surrogate: 1-Chlorooctadecane 94.0 % 34.7-157

Cardinal Laboratories

\*=Accredited Analyte

PLEASE NOTE: Liability and Damages. Cardinal's liability and client's exclusive remedy for any claim arising, whether based in contract or tort, shall be limited to the amount paid by client for analyses. All claims, including those for negligence and any other cause whatsoever shall be deemed waived unless made in writing and received by Cardinal within thirty (30) days after completion of the applicable service. In no event shall Cardinal be liable for incidental or consequential damages, including, without limitation, business interruptions, loss of use, or loss of profits incurred by client, its subsidiaries, affiliates or successors arising out of or related to the performance of the services hereunder by Cardinal, regardless of whether such claim is based upon any of the above stated reasons or otherwise. Results relate only to the samples identified above. This report shall not be reproduced except in full with written approval of Cardinal Laboratories.



Celey D. Keene, Lab Director/Quality Manager

**Analytical Results For:**

BBC International, Inc.  
Cliff Brunson  
P.O. Box 805  
Hobbs NM, 88241  
Fax To: (575) 397-0397

Received: 05/05/2017  
Reported: 05/15/2017  
Project Name: SMOKEY BITS  
Project Number: NONE GIVEN  
Project Location: NOT GIVEN

Sampling Date: 05/01/2017  
Sampling Type: Soil  
Sampling Condition: Cool & Intact  
Sample Received By: Tamara Oldaker

**Sample ID: 3 @ 2' (H701214-10)**

BTEx 8021B			mg/kg		Analyzed By: BF					
Analyte	Result	Reporting Limit	Analyzed	Method Blank	BS	% Recovery	True Value QC	RPD	Qualifier	
Benzene*	<0.050	0.050	05/12/2017	ND	2.11	106	2.00	0.434		
Toluene*	<0.050	0.050	05/12/2017	ND	2.11	105	2.00	0.179		
Ethylbenzene*	<0.050	0.050	05/12/2017	ND	2.08	104	2.00	0.0550		
Total Xylenes*	<0.150	0.150	05/12/2017	ND	6.21	103	6.00	0.209		
Total BTEx	<0.300	0.300	05/12/2017	ND						

Surrogate: 4-Bromofluorobenzene (PID) 126 % 72-148

Chloride, SM4500CI-B		mg/kg		Analyzed By: AC					
Analyte	Result	Reporting Limit	Analyzed	Method Blank	BS	% Recovery	True Value QC	RPD	Qualifier
Chloride	160	16.0	05/09/2017	ND	400	100	400	3.92	

TPH 8015M		mg/kg		Analyzed By: MS					
Analyte	Result	Reporting Limit	Analyzed	Method Blank	BS	% Recovery	True Value QC	RPD	Qualifier
GRO C6-C10	<10.0	10.0	05/10/2017	ND	198	98.8	200	1.70	
DRO >C10-C28	<10.0	10.0	05/10/2017	ND	193	96.4	200	5.15	

Surrogate: 1-Chlorooctane 68.3 % 28.3-164

Surrogate: 1-Chlorooctadecane 65.5 % 34.7-157

Cardinal Laboratories

\*=Accredited Analyte

PLEASE NOTE: Liability and Damages. Cardinal's liability and client's exclusive remedy for any claim arising, whether based in contract or tort, shall be limited to the amount paid by client for analyses. All claims, including those for negligence and any other cause whatsoever shall be deemed waived unless made in writing and received by Cardinal within thirty (30) days after completion of the applicable service. In no event shall Cardinal be liable for incidental or consequential damages, including, without limitation, business interruptions, loss of use, or loss of profits incurred by client, its subsidiaries, affiliates or successors arising out of or related to the performance of the services hereunder by Cardinal, regardless of whether such claim is based upon any of the above stated reasons or otherwise. Results relate only to the samples identified above. This report shall not be reproduced except in full with written approval of Cardinal Laboratories.



Celey D. Keene, Lab Director/Quality Manager

**Analytical Results For:**

BBC International, Inc.  
Cliff Brunson  
P.O. Box 805  
Hobbs NM, 88241  
Fax To: (575) 397-0397

Received:	05/05/2017	Sampling Date:	05/01/2017
Reported:	05/15/2017	Sampling Type:	Soil
Project Name:	SMOKEY BITS	Sampling Condition:	Cool & Intact
Project Number:	NONE GIVEN	Sample Received By:	Tamara Oldaker
Project Location:	NOT GIVEN		

**Sample ID: 3 @ 7' (H701214-11)**

BTEx 8021B		mg/kg		Analyzed By: BF						
Analyte	Result	Reporting Limit	Analyzed	Method Blank	BS	% Recovery	True Value QC	RPD	Qualifier	
Benzene*	<0.050	0.050	05/12/2017	ND	2.11	106	2.00	0.434		
Toluene*	<0.050	0.050	05/12/2017	ND	2.11	105	2.00	0.179		
Ethylbenzene*	<0.050	0.050	05/12/2017	ND	2.08	104	2.00	0.0550		
Total Xylenes*	<0.150	0.150	05/12/2017	ND	6.21	103	6.00	0.209		
Total BTEx	<0.300	0.300	05/12/2017	ND						

Surrogate: 4-Bromofluorobenzene (PID) 124 % 72-148

Chloride, SM4500CI-B		mg/kg		Analyzed By: AC					
Analyte	Result	Reporting Limit	Analyzed	Method Blank	BS	% Recovery	True Value QC	RPD	Qualifier
Chloride	176	16.0	05/09/2017	ND	400	100	400	3.92	

TPH 8015M		mg/kg		Analyzed By: MS					
Analyte	Result	Reporting Limit	Analyzed	Method Blank	BS	% Recovery	True Value QC	RPD	Qualifier
GRO C6-C10	<10.0	10.0	05/10/2017	ND	198	98.8	200	1.70	
DRO >C10-C28	<10.0	10.0	05/10/2017	ND	193	96.4	200	5.15	

Surrogate: 1-Chlorooctane 77.0 % 28.3-164

Surrogate: 1-Chlorooctadecane 69.5 % 34.7-157

**Sample ID: 3 @ 12' (H701214-12)**

Chloride, SM4500Cl-B		mg/kg		Analyzed By: AC					
Analyte	Result	Reporting Limit	Analyzed	Method Blank	BS	% Recovery	True Value QC	RPD	Qualifier
Chloride	160	16.0	05/09/2017	ND	400	100	400	3.92	

Cardinal Laboratories

\*=Accredited Analyte

PLEASE NOTE: Liability and Damages. Cardinal's liability and client's exclusive remedy for any claim arising, whether based in contract or tort, shall be limited to the amount paid by client for analyses. All claims, including those for negligence and any other cause whatsoever shall be deemed waived unless made in writing and received by Cardinal within thirty (30) days after completion of the applicable service. In no event shall Cardinal be liable for incidental or consequential damages, including, without limitation, business interruptions, loss of use, or loss of profits incurred by client, its subsidiaries, affiliates or successors arising out of or related to the performance of the services hereunder by Cardinal, regardless of whether such claim is based upon any of the above stated reasons or otherwise. Results relate only to the samples identified above. This report shall not be reproduced except in full with written approval of Cardinal Laboratories.



Celey D. Keene, Lab Director/Quality Manager

**Analytical Results For:**

BBC International, Inc.  
Cliff Brunson  
P.O. Box 805  
Hobbs NM, 88241  
Fax To: (575) 397-0397

Received: 05/05/2017  
Reported: 05/15/2017  
Project Name: SMOKEY BITS  
Project Number: NONE GIVEN  
Project Location: NOT GIVEN

Sampling Date: 05/01/2017  
Sampling Type: Soil  
Sampling Condition: Cool & Intact  
Sample Received By: Tamara Oldaker

**Sample ID: 4 @ 1' (H701214-13)**

BTEx 8021B		mg/kg		Analyzed By: BF					
Analyte	Result	Reporting Limit	Analyzed	Method Blank	BS	% Recovery	True Value QC	RPD	Qualifier
Benzene*	<0.050	0.050	05/12/2017	ND	2.11	106	2.00	0.434	
Toluene*	<0.050	0.050	05/12/2017	ND	2.11	105	2.00	0.179	
Ethylbenzene*	<0.050	0.050	05/12/2017	ND	2.08	104	2.00	0.0550	
Total Xylenes*	<0.150	0.150	05/12/2017	ND	6.21	103	6.00	0.209	
Total BTEx	<0.300	0.300	05/12/2017	ND					

Surrogate: 4-Bromofluorobenzene (PID) 124 % 72-148

Chloride, SM4500CI-B		mg/kg		Analyzed By: AC					
Analyte	Result	Reporting Limit	Analyzed	Method Blank	BS	% Recovery	True Value QC	RPD	Qualifier
Chloride	3920	16.0	05/09/2017	ND	400	100	400	3.92	

TPH 8015M		mg/kg		Analyzed By: MS					
Analyte	Result	Reporting Limit	Analyzed	Method Blank	BS	% Recovery	True Value QC	RPD	Qualifier
GRO C6-C10	<10.0	10.0	05/10/2017	ND	198	98.8	200	1.70	
DRO >C10-C28	<10.0	10.0	05/10/2017	ND	193	96.4	200	5.15	

Surrogate: 1-Chlorooctane 83.2 % 28.3-164

Surrogate: 1-Chlorooctadecane 84.8 % 34.7-157

Cardinal Laboratories

\*=Accredited Analyte

PLEASE NOTE: Liability and Damages. Cardinal's liability and client's exclusive remedy for any claim arising, whether based in contract or tort, shall be limited to the amount paid by client for analyses. All claims, including those for negligence and any other cause whatsoever shall be deemed waived unless made in writing and received by Cardinal within thirty (30) days after completion of the applicable service. In no event shall Cardinal be liable for incidental or consequential damages, including, without limitation, business interruptions, loss of use, or loss of profits incurred by client, its subsidiaries, affiliates or successors arising out of or related to the performance of the services hereunder by Cardinal, regardless of whether such claim is based upon any of the above stated reasons or otherwise. Results relate only to the samples identified above. This report shall not be reproduced except in full with written approval of Cardinal Laboratories.



Celey D. Keene, Lab Director/Quality Manager



**Analytical Results For:**

BBC International, Inc.  
Cliff Brunson  
P.O. Box 805  
Hobbs NM, 88241  
Fax To: (575) 397-0397

Received: 05/05/2017  
Reported: 05/15/2017  
Project Name: SMOKEY BITS  
Project Number: NONE GIVEN  
Project Location: NOT GIVEN

Sampling Date: 05/01/2017  
Sampling Type: Soil  
Sampling Condition: Cool & Intact  
Sample Received By: Tamara Oldaker

**Sample ID: 4 @ 2' (H701214-14)**

BTEx 8021B		mg/kg		Analyzed By: BF					
Analyte	Result	Reporting Limit	Analyzed	Method Blank	BS	% Recovery	True Value QC	RPD	Qualifier
Benzene*	<0.050	0.050	05/12/2017	ND	2.11	106	2.00	0.434	
Toluene*	<0.050	0.050	05/12/2017	ND	2.11	105	2.00	0.179	
Ethylbenzene*	<0.050	0.050	05/12/2017	ND	2.08	104	2.00	0.0550	
Total Xylenes*	<0.150	0.150	05/12/2017	ND	6.21	103	6.00	0.209	
Total BTEx	<0.300	0.300	05/12/2017	ND					

Surrogate: 4-Bromofluorobenzene (PID) 126 % 72-148

Chloride, SM4500CI-B		mg/kg		Analyzed By: AC					
Analyte	Result	Reporting Limit	Analyzed	Method Blank	BS	% Recovery	True Value QC	RPD	Qualifier
Chloride	128	16.0	05/09/2017	ND	400	100	400	3.92	

TPH 8015M		mg/kg		Analyzed By: MS					
Analyte	Result	Reporting Limit	Analyzed	Method Blank	BS	% Recovery	True Value QC	RPD	Qualifier
GRO C6-C10	<10.0	10.0	05/10/2017	ND	198	98.8	200	1.70	
DRO >C10-C28	<10.0	10.0	05/10/2017	ND	193	96.4	200	5.15	

Surrogate: 1-Chlorooctane 83.2 % 28.3-164

Surrogate: 1-Chlorooctadecane 80.6 % 34.7-157

Cardinal Laboratories

\*=Accredited Analyte

PLEASE NOTE: Liability and Damages. Cardinal's liability and client's exclusive remedy for any claim arising, whether based in contract or tort, shall be limited to the amount paid by client for analyses. All claims, including those for negligence and any other cause whatsoever shall be deemed waived unless made in writing and received by Cardinal within thirty (30) days after completion of the applicable service. In no event shall Cardinal be liable for incidental or consequential damages, including, without limitation, business interruptions, loss of use, or loss of profits incurred by client, its subsidiaries, affiliates or successors arising out of or related to the performance of the services hereunder by Cardinal, regardless of whether such claim is based upon any of the above stated reasons or otherwise. Results relate only to the samples identified above. This report shall not be reproduced except in full with written approval of Cardinal Laboratories.



Celey D. Keene, Lab Director/Quality Manager

**Analytical Results For:**

BBC International, Inc.  
Cliff Brunson  
P.O. Box 805  
Hobbs NM, 88241  
Fax To: (575) 397-0397

Received:	05/05/2017	Sampling Date:	05/01/2017
Reported:	05/15/2017	Sampling Type:	Soil
Project Name:	SMOKEY BITS	Sampling Condition:	Cool & Intact
Project Number:	NONE GIVEN	Sample Received By:	Tamara Oldaker
Project Location:	NOT GIVEN		

**Sample ID: 4 @ 3' (H701214-15)**

BTEx 8021B		mg/kg		Analyzed By: BF					
Analyte	Result	Reporting Limit	Analyzed	Method Blank	BS	% Recovery	True Value QC	RPD	Qualifier
Benzene*	<0.050	0.050	05/12/2017	ND	2.11	106	2.00	0.434	
Toluene*	<0.050	0.050	05/12/2017	ND	2.11	105	2.00	0.179	
Ethylbenzene*	<0.050	0.050	05/12/2017	ND	2.08	104	2.00	0.0550	
Total Xylenes*	<0.150	0.150	05/12/2017	ND	6.21	103	6.00	0.209	
Total BTEx	<0.300	0.300	05/12/2017	ND					

Surrogate: 4-Bromofluorobenzene (PID) 125 % 72-148

Chloride, SM4500CI-B		mg/kg		Analyzed By: AC					
Analyte	Result	Reporting Limit	Analyzed	Method Blank	BS	% Recovery	True Value QC	RPD	Qualifier
Chloride	144	16.0	05/09/2017	ND	400	100	400	3.92	

TPH 8015M		mg/kg		Analyzed By: MS					
Analyte	Result	Reporting Limit	Analyzed	Method Blank	BS	% Recovery	True Value QC	RPD	Qualifier
GRO C6-C10	<10.0	10.0	05/10/2017	ND	198	98.8	200	1.70	
DRO >C10-C28	<10.0	10.0	05/10/2017	ND	193	96.4	200	5.15	

Surrogate: 1-Chlorooctane 78.4 % 28.3-164

Surrogate: 1-Chlorooctadecane 84.4 % 34.7-157

Cardinal Laboratories

\*=Accredited Analyte

PLEASE NOTE: Liability and Damages. Cardinal's liability and client's exclusive remedy for any claim arising, whether based in contract or tort, shall be limited to the amount paid by client for analyses. All claims, including those for negligence and any other cause whatsoever shall be deemed waived unless made in writing and received by Cardinal within thirty (30) days after completion of the applicable service. In no event shall Cardinal be liable for incidental or consequential damages, including, without limitation, business interruptions, loss of use, or loss of profits incurred by client, its subsidiaries, affiliates or successors arising out of or related to the performance of the services hereunder by Cardinal, regardless of whether such claim is based upon any of the above stated reasons or otherwise. Results relate only to the samples identified above. This report shall not be reproduced except in full with written approval of Cardinal Laboratories.



Celey D. Keene, Lab Director/Quality Manager

**Analytical Results For:**

BBC International, Inc.  
Cliff Brunson  
P.O. Box 805  
Hobbs NM, 88241  
Fax To: (575) 397-0397

Received:	05/05/2017	Sampling Date:	05/01/2017
Reported:	05/15/2017	Sampling Type:	Soil
Project Name:	SMOKEY BITS	Sampling Condition:	Cool & Intact
Project Number:	NONE GIVEN	Sample Received By:	Tamara Oldaker
Project Location:	NOT GIVEN		

**Sample ID: 4 @ 4' (H701214-16)**

BTEx 8021B			mg/kg		Analyzed By: BF					
Analyte	Result	Reporting Limit	Analyzed	Method Blank	BS	% Recovery	True Value QC	RPD	Qualifier	
Benzene*	<0.050	0.050	05/12/2017	ND	2.11	106	2.00	0.434		
Toluene*	<0.050	0.050	05/12/2017	ND	2.11	105	2.00	0.179		
Ethylbenzene*	<0.050	0.050	05/12/2017	ND	2.08	104	2.00	0.0550		
Total Xylenes*	<0.150	0.150	05/12/2017	ND	6.21	103	6.00	0.209		
Total BTEx	<0.300	0.300	05/12/2017	ND						

Surrogate: 4-Bromofluorobenzene (PID) 125 % 72-148

Chloride, SM4500CI-B		mg/kg		Analyzed By: AC					
Analyte	Result	Reporting Limit	Analyzed	Method Blank	BS	% Recovery	True Value QC	RPD	Qualifier
Chloride	128	16.0	05/09/2017	ND	400	100	400	3.92	

TPH 8015M		mg/kg		Analyzed By: MS					
Analyte	Result	Reporting Limit	Analyzed	Method Blank	BS	% Recovery	True Value QC	RPD	Qualifier
GRO C6-C10	<10.0	10.0	05/11/2017	ND	193	96.6	200	2.84	
DRO >C10-C28	<10.0	10.0	05/11/2017	ND	196	97.8	200	1.26	

Surrogate: 1-Chlorooctane 75.2 % 28.3-164

Surrogate: 1-Chlorooctadecane 90.0 % 34.7-157

Cardinal Laboratories

\*=Accredited Analyte

PLEASE NOTE: Liability and Damages. Cardinal's liability and client's exclusive remedy for any claim arising, whether based in contract or tort, shall be limited to the amount paid by client for analyses. All claims, including those for negligence and any other cause whatsoever shall be deemed waived unless made in writing and received by Cardinal within thirty (30) days after completion of the applicable service. In no event shall Cardinal be liable for incidental or consequential damages, including, without limitation, business interruptions, loss of use, or loss of profits incurred by client, its subsidiaries, affiliates or successors arising out of or related to the performance of the services hereunder by Cardinal, regardless of whether such claim is based upon any of the above stated reasons or otherwise. Results relate only to the samples identified above. This report shall not be reproduced except in full with written approval of Cardinal Laboratories.



Celey D. Keene, Lab Director/Quality Manager

**Analytical Results For:**

BBC International, Inc.  
Cliff Brunson  
P.O. Box 805  
Hobbs NM, 88241  
Fax To: (575) 397-0397

Received:	05/05/2017	Sampling Date:	05/01/2017
Reported:	05/15/2017	Sampling Type:	Soil
Project Name:	SMOKEY BITS	Sampling Condition:	Cool & Intact
Project Number:	NONE GIVEN	Sample Received By:	Tamara Oldaker
Project Location:	NOT GIVEN		

**Sample ID: 4 @ 9' (H701214-17)**

BTEx 8021B		mg/kg		Analyzed By: BF					
Analyte	Result	Reporting Limit	Analyzed	Method Blank	BS	% Recovery	True Value QC	RPD	Qualifier
Benzene*	<0.050	0.050	05/12/2017	ND	2.11	106	2.00	0.434	
Toluene*	<0.050	0.050	05/12/2017	ND	2.11	105	2.00	0.179	
Ethylbenzene*	<0.050	0.050	05/12/2017	ND	2.08	104	2.00	0.0550	
Total Xylenes*	<0.150	0.150	05/12/2017	ND	6.21	103	6.00	0.209	
Total BTEX	<0.300	0.300	05/12/2017	ND					

Surrogate: 4-Bromofluorobenzene (PID) 125 % 72-148

Chloride, SM4500Cl-B		mg/kg		Analyzed By: AC					
Analyte	Result	Reporting Limit	Analyzed	Method Blank	BS	% Recovery	True Value QC	RPD	Qualifier
Chloride	160	16.0	05/09/2017	ND	400	100	400	3.92	

TPH 8015M		mg/kg		Analyzed By: MS					
Analyte	Result	Reporting Limit	Analyzed	Method Blank	BS	% Recovery	True Value QC	RPD	Qualifier
GRO C6-C10	<10.0	10.0	05/11/2017	ND	193	96.6	200	2.84	
DRO >C10-C28	<10.0	10.0	05/11/2017	ND	196	97.8	200	1.26	

Surrogate: 1-Chlorooctane 63.5 % 28.3-164

Surrogate: 1-Chlorooctadecane 69.4 % 34.7-157

**Sample ID: 4 @ 14' (H701214-18)**

Chloride, SM4500Cl-B		mg/kg		Analyzed By: AC					
Analyte	Result	Reporting Limit	Analyzed	Method Blank	BS	% Recovery	True Value QC	RPD	Qualifier
Chloride	144	16.0	05/09/2017	ND	400	100	400	3.92	

Cardinal Laboratories

\*=Accredited Analyte

PLEASE NOTE: Liability and Damages. Cardinal's liability and client's exclusive remedy for any claim arising, whether based in contract or tort, shall be limited to the amount paid by client for analyses. All claims, including those for negligence and any other cause whatsoever shall be deemed waived unless made in writing and received by Cardinal within thirty (30) days after completion of the applicable service. In no event shall Cardinal be liable for incidental or consequential damages, including, without limitation, business interruptions, loss of use, or loss of profits incurred by client, its subsidiaries, affiliates or successors arising out of or related to the performance of the services hereunder by Cardinal, regardless of whether such claim is based upon any of the above stated reasons or otherwise. Results relate only to the samples identified above. This report shall not be reproduced except in full with written approval of Cardinal Laboratories.



Celey D. Keene, Lab Director/Quality Manager

**Analytical Results For:**

BBC International, Inc.  
Cliff Brunson  
P.O. Box 805  
Hobbs NM, 88241  
Fax To: (575) 397-0397

Received:	05/05/2017	Sampling Date:	05/01/2017
Reported:	05/15/2017	Sampling Type:	Soil
Project Name:	SMOKEY BITS	Sampling Condition:	Cool & Intact
Project Number:	NONE GIVEN	Sample Received By:	Tamara Oldaker
Project Location:	NOT GIVEN		

**Sample ID: NORTH @ SURFACE (H701214-19)**

BTX 8021B		mg/kg		Analyzed By: BF					
Analyte	Result	Reporting Limit	Analyzed	Method Blank	BS	% Recovery	True Value QC	RPD	Qualifier
Benzene*	<0.050	0.050	05/12/2017	ND	2.11	106	2.00	0.434	
Toluene*	<0.050	0.050	05/12/2017	ND	2.11	105	2.00	0.179	
Ethylbenzene*	<0.050	0.050	05/12/2017	ND	2.08	104	2.00	0.0550	
Total Xylenes*	<0.150	0.150	05/12/2017	ND	6.21	103	6.00	0.209	
Total BTX	<0.300	0.300	05/12/2017	ND					

Surrogate: 4-Bromofluorobenzene (PID) 125 % 72-148

Chloride, SM4500CI-B		mg/kg		Analyzed By: AC					
Analyte	Result	Reporting Limit	Analyzed	Method Blank	BS	% Recovery	True Value QC	RPD	Qualifier
Chloride	176	16.0	05/09/2017	ND	400	100	400	3.92	

TPH 8015M		mg/kg		Analyzed By: MS					
Analyte	Result	Reporting Limit	Analyzed	Method Blank	BS	% Recovery	True Value QC	RPD	Qualifier
GRO C6-C10	<10.0	10.0	05/11/2017	ND	193	96.6	200	2.84	
DRO >C10-C28	<10.0	10.0	05/11/2017	ND	196	97.8	200	1.26	

Surrogate: 1-Chlorooctane 66.8 % 28.3-164

Surrogate: 1-Chlorooctadecane 68.7 % 34.7-157

Cardinal Laboratories

\*=Accredited Analyte

PLEASE NOTE: Liability and Damages. Cardinal's liability and client's exclusive remedy for any claim arising, whether based in contract or tort, shall be limited to the amount paid by client for analyses. All claims, including those for negligence and any other cause whatsoever shall be deemed waived unless made in writing and received by Cardinal within thirty (30) days after completion of the applicable service. In no event shall Cardinal be liable for incidental or consequential damages, including, without limitation, business interruptions, loss of use, or loss of profits incurred by client, its subsidiaries, affiliates or successors arising out of or related to the performance of the services hereunder by Cardinal, regardless of whether such claim is based upon any of the above stated reasons or otherwise. Results relate only to the samples identified above. This report shall not be reproduced except in full with written approval of Cardinal Laboratories.



Celey D. Keene, Lab Director/Quality Manager

**Analytical Results For:**

BBC International, Inc.  
Cliff Brunson  
P.O. Box 805  
Hobbs NM, 88241  
Fax To: (575) 397-0397

Received: 05/05/2017  
Reported: 05/15/2017  
Project Name: SMOKEY BITS  
Project Number: NONE GIVEN  
Project Location: NOT GIVEN

Sampling Date: 05/01/2017  
Sampling Type: Soil  
Sampling Condition: Cool & Intact  
Sample Received By: Tamara Oldaker

**Sample ID: EAST @ SURFACE (H701214-20)**

BTEx 8021B		mg/kg		Analyzed By: BF						
Analyte	Result	Reporting Limit	Analyzed	Method Blank	BS	% Recovery	True Value QC	RPD	Qualifier	
Benzene*	<0.050	0.050	05/12/2017	ND	2.08	104	2.00	1.17		
Toluene*	<0.050	0.050	05/12/2017	ND	2.10	105	2.00	1.84		
Ethylbenzene*	<0.050	0.050	05/12/2017	ND	2.12	106	2.00	2.63		
Total Xylenes*	<0.150	0.150	05/12/2017	ND	6.23	104	6.00	1.86		
Total BTEx	<0.300	0.300	05/12/2017	ND						

Surrogate: 4-Bromofluorobenzene (PID) 126 % 72-148

Chloride, SM4500CI-B		mg/kg		Analyzed By: AC					
Analyte	Result	Reporting Limit	Analyzed	Method Blank	BS	% Recovery	True Value QC	RPD	Qualifier
Chloride	160	16.0	05/09/2017	ND	400	100	400	3.92	

TPH 8015M		mg/kg		Analyzed By: MS					
Analyte	Result	Reporting Limit	Analyzed	Method Blank	BS	% Recovery	True Value QC	RPD	Qualifier
GRO C6-C10	<10.0	10.0	05/11/2017	ND	193	96.6	200	2.84	
DRO >C10-C28	<10.0	10.0	05/11/2017	ND	196	97.8	200	1.26	

Surrogate: 1-Chlorooctane 74.2 % 28.3-164

Surrogate: 1-Chlorooctadecane 76.7 % 34.7-157

Cardinal Laboratories

\*=Accredited Analyte

PLEASE NOTE: Liability and Damages. Cardinal's liability and client's exclusive remedy for any claim arising, whether based in contract or tort, shall be limited to the amount paid by client for analyses. All claims, including those for negligence and any other cause whatsoever shall be deemed waived unless made in writing and received by Cardinal within thirty (30) days after completion of the applicable service. In no event shall Cardinal be liable for incidental or consequential damages, including, without limitation, business interruptions, loss of use, or loss of profits incurred by client, its subsidiaries, affiliates or successors arising out of or related to the performance of the services hereunder by Cardinal, regardless of whether such claim is based upon any of the above stated reasons or otherwise. Results relate only to the samples identified above. This report shall not be reproduced except in full with written approval of Cardinal Laboratories.



Celey D. Keene, Lab Director/Quality Manager

**Analytical Results For:**

BBC International, Inc.  
Cliff Brunson  
P.O. Box 805  
Hobbs NM, 88241  
Fax To: (575) 397-0397

Received:	05/05/2017	Sampling Date:	05/01/2017
Reported:	05/15/2017	Sampling Type:	Soil
Project Name:	SMOKEY BITS	Sampling Condition:	Cool & Intact
Project Number:	NONE GIVEN	Sample Received By:	Tamara Oldaker
Project Location:	NOT GIVEN		

**Sample ID: SOUTH @ SURFACE (H701214-21)**

BTX 8021B		mg/kg		Analyzed By: BF					
Analyte	Result	Reporting Limit	Analyzed	Method Blank	BS	% Recovery	True Value QC	RPD	Qualifier
Benzene*	<0.050	0.050	05/12/2017	ND	2.08	104	2.00	1.17	
Toluene*	<0.050	0.050	05/12/2017	ND	2.10	105	2.00	1.84	
Ethylbenzene*	<0.050	0.050	05/12/2017	ND	2.12	106	2.00	2.63	
Total Xylenes*	<0.150	0.150	05/12/2017	ND	6.23	104	6.00	1.86	
Total BTX	<0.300	0.300	05/12/2017	ND					

Surrogate: 4-Bromofluorobenzene (PID) 125 % 72-148

Chloride, SM4500CI-B		mg/kg		Analyzed By: AC					
Analyte	Result	Reporting Limit	Analyzed	Method Blank	BS	% Recovery	True Value QC	RPD	Qualifier
Chloride	144	16.0	05/09/2017	ND	400	100	400	3.92	

TPH 8015M		mg/kg		Analyzed By: MS					
Analyte	Result	Reporting Limit	Analyzed	Method Blank	BS	% Recovery	True Value QC	RPD	Qualifier
GRO C6-C10	<10.0	10.0	05/11/2017	ND	193	96.6	200	2.84	
DRO >C10-C28	<10.0	10.0	05/11/2017	ND	196	97.8	200	1.26	

Surrogate: 1-Chlorooctane 72.0 % 28.3-164

Surrogate: 1-Chlorooctadecane 77.8 % 34.7-157

Cardinal Laboratories

\*=Accredited Analyte

PLEASE NOTE: Liability and Damages. Cardinal's liability and client's exclusive remedy for any claim arising, whether based in contract or tort, shall be limited to the amount paid by client for analyses. All claims, including those for negligence and any other cause whatsoever shall be deemed waived unless made in writing and received by Cardinal within thirty (30) days after completion of the applicable service. In no event shall Cardinal be liable for incidental or consequential damages, including, without limitation, business interruptions, loss of use, or loss of profits incurred by client, its subsidiaries, affiliates or successors arising out of or related to the performance of the services hereunder by Cardinal, regardless of whether such claim is based upon any of the above stated reasons or otherwise. Results relate only to the samples identified above. This report shall not be reproduced except in full with written approval of Cardinal Laboratories.



Celey D. Keene, Lab Director/Quality Manager



**Analytical Results For:**

BBC International, Inc.  
Cliff Brunson  
P.O. Box 805  
Hobbs NM, 88241  
Fax To: (575) 397-0397

Received:	05/05/2017	Sampling Date:	05/01/2017
Reported:	05/15/2017	Sampling Type:	Soil
Project Name:	SMOKEY BITS	Sampling Condition:	Cool & Intact
Project Number:	NONE GIVEN	Sample Received By:	Tamara Oldaker
Project Location:	NOT GIVEN		

**Sample ID: WEST @ SURFACE (H701214-22)**

BTEx 8021B		mg/kg		Analyzed By: BF					
Analyte	Result	Reporting Limit	Analyzed	Method Blank	BS	% Recovery	True Value QC	RPD	Qualifier
Benzene*	<0.050	0.050	05/12/2017	ND	2.08	104	2.00	1.17	
Toluene*	<0.050	0.050	05/12/2017	ND	2.10	105	2.00	1.84	
Ethylbenzene*	<0.050	0.050	05/12/2017	ND	2.12	106	2.00	2.63	
Total Xylenes*	<0.150	0.150	05/12/2017	ND	6.23	104	6.00	1.86	
Total BTEx	<0.300	0.300	05/12/2017	ND					

Surrogate: 4-Bromofluorobenzene (PID) 125 % 72-148

Chloride, SM4500CI-B		mg/kg		Analyzed By: AC					
Analyte	Result	Reporting Limit	Analyzed	Method Blank	BS	% Recovery	True Value QC	RPD	Qualifier
Chloride	144	16.0	05/09/2017	ND	400	100	400	3.92	

TPH 8015M		mg/kg		Analyzed By: MS					
Analyte	Result	Reporting Limit	Analyzed	Method Blank	BS	% Recovery	True Value QC	RPD	Qualifier
GRO C6-C10	<10.0	10.0	05/11/2017	ND	193	96.6	200	2.84	
DRO >C10-C28	<10.0	10.0	05/11/2017	ND	196	97.8	200	1.26	

Surrogate: 1-Chlorooctane 71.9 % 28.3-164

Surrogate: 1-Chlorooctadecane 74.3 % 34.7-157

Cardinal Laboratories

\*=Accredited Analyte

PLEASE NOTE: Liability and Damages. Cardinal's liability and client's exclusive remedy for any claim arising, whether based in contract or tort, shall be limited to the amount paid by client for analyses. All claims, including those for negligence and any other cause whatsoever shall be deemed waived unless made in writing and received by Cardinal within thirty (30) days after completion of the applicable service. In no event shall Cardinal be liable for incidental or consequential damages, including, without limitation, business interruptions, loss of use, or loss of profits incurred by client, its subsidiaries, affiliates or successors arising out of or related to the performance of the services hereunder by Cardinal, regardless of whether such claim is based upon any of the above stated reasons or otherwise. Results relate only to the samples identified above. This report shall not be reproduced except in full with written approval of Cardinal Laboratories.



Celey D. Keene, Lab Director/Quality Manager

**Notes and Definitions**

ND	Analyte NOT DETECTED at or above the reporting limit
RPD	Relative Percent Difference
**	Samples not received at proper temperature of 6°C or below.
***	Insufficient time to reach temperature.
-	Chloride by SM4500Cl-B does not require samples be received at or below 6°C Samples reported on an as received basis (wet) unless otherwise noted on report

---

Cardinal Laboratories

\*=Accredited Analyte

PLEASE NOTE: Liability and Damages. Cardinal's liability and client's exclusive remedy for any claim arising, whether based in contract or tort, shall be limited to the amount paid by client for analyses. All claims, including those for negligence and any other cause whatsoever shall be deemed waived unless made in writing and received by Cardinal within thirty (30) days after completion of the applicable service. In no event shall Cardinal be liable for incidental or consequential damages, including, without limitation, business interruptions, loss of use, or loss of profits incurred by client, its subsidiaries, affiliates or successors arising out of or related to the performance of the services hereunder by Cardinal, regardless of whether such claim is based upon any of the above stated reasons or otherwise. Results relate only to the samples identified above. This report shall not be reproduced except in full with written approval of Cardinal Laboratories.



---

Celey D. Keene, Lab Director/Quality Manager



# CARDINAL LABORATORIES

101 East Marland, Hobbs, NM 88240  
(505) 393-2326 FAX (505) 393-2476

## CHAIN-OF-CUSTODY AND ANALYSIS REQUEST

### BILL TO

### ANALYSIS REQUEST

P.O. #:

Company:

Attn:

Address:

City:

State:

Zip:

Phone #:

Fax #:

Company Name: BBC International, Inc.

Project Manager: Cliff Brunson

Address: P.O. Box 805

City: Hobbs

Phone #: 575-397-6388

Project #:

Project Name: Smokey Bits

Project Location:

Sampler Name: Pnce Brunson

FOR LAB USE ONLY

Lab I.D. Sample I.D.

11/12/14

Lab I.D.	Sample I.D.	(G)RAB OR (C)OMP.	# CONTAINERS	GROUNDWATER	WASTEWATER	SOIL	OIL	SLUDGE	OTHER :	ACID/BASE:	ICE / COOL	OTHER :	DATE	TIME	TPH	3 TEX	CL
1	101	G	6										5/11/17	0930	/	/	/
2	102	G	6										5/11/17	0940	/	/	/
3	107	G	6										5/11/17	1000	/	/	/
4	1012	G	6										5/11/17	1015	/	/	/
5	201	G	6										5/11/17	1045	/	/	/
6	202	G	6										5/11/17	1050	/	/	/
7	207	G	6										5/11/17	1100	/	/	/
8	2012	G	6										5/11/17	1115	/	/	/
9	301	G	6										5/11/17	1140	/	/	/
10	302	G	6										5/11/17	1150	/	/	/

PLEASE NOTE: Liability and Damages: Cardinal's liability and client's exclusive remedy for any claim arising whether based in contract or tort, shall be limited to the amount paid by the client for the service. As claims including those for negligence and any other cause whatsoever shall be deemed waived unless made in writing and received by Cardinal within 30 days after completion of the applicable service. In no event shall Cardinal be liable for incidental or consequential damages, including without limitation, business interruptions, loss of use, or loss of profits incurred by client, its subsidiaries, affiliates or successors arising out of or related to the performance of services hereunder by Cardinal. Incurrence of whether such claim is based upon any of the above stated reasons or otherwise.

Relinquished By:

Date: 5/11/17  
Time: 1:00pm

Received By: *Lawrence*

Phone Result: ☐ Yes ☐ No Add'l Phone #:   
Fax Result: ☐ Yes ☐ No Add'l Fax #:   
REMARKS:

Relinquished By:

Date: 5-17  
Time: 10:40

Received By: *Lawrence*

Delivered By: (Circle One)

UPS - ☒ Bus - ☐ Other: ☐

Sample Condition: ☒ Cool ☐ Intact ☐ Yes ☐ No

CHECKED BY: (Initials) *TS*

\* Cardinal cannot accept verbal changes. Please fax written changes to 505-393-2476



# ARDINAL LABORATORIES

101 East Marland, Hobbs, NM 88240  
(505) 393-2326 FAX (505) 393-2476

## CHAIN-OF-CUSTODY AND ANALYSIS REQUEST

12 of 2

Company Name: BBC International, Inc.	P.O. #:	BILL TO					ANALYSIS REQUEST				
Project Manager: Cliff Brunson	Company:										
Address: P.O. Box 805	Attn:										
City: Hobbs	Address:										
Phone #: 575-397-6388	City:										
Project #:	State: NM Zip: 88241										
Project Name: Smokey Bds	Project Owner: DAV										
Project Location:	State: Zip:										
Sampler Name: Rice Brunson	Phone #:										
FOR LAB USE ONLY	Fax #:										

Lab I.D.	Sample I.D.	(G)RAB OR (C)OMP.		MATRIX					PRESERV.		SAMPLING		ANALYSIS REQUEST				
		# CONTAINERS		GROUNDWATER	WASTEWATER	SOIL	OIL	SLUDGE	OTHER :	ACID/BASE:	ICE / COOL	OTHER :					
H701244	3 0 71	6											TPH				
11	3 0 12	6											BTEX				
12	3 0 1	6											CL				
13	3 0 2	6															
14	3 0 3	6															
15	3 0 4	6															
16	3 0 5	6															
17	3 0 6	6															
18	3 0 7	6															
19	3 0 8	6															
20	3 0 9	6															

PLEASE NOTE: Liability and Damages: Cardinal's liability and client's exclusive remedy for any claim arising whether based in contract or tort, shall be limited to the amount paid by the client for the analysis. All claims, including those for negligence and any other cause whatsoever shall be deemed waived unless made in writing and received by Cardinal within 30 days after completion of the applicable service. In no event shall Cardinal be liable for incidental or consequential damages, including without limitation, business interruptions, loss of use, or loss of profits incurred by client, its subsidiaries, affiliates or successors arising out of or related to the performance of services hereunder by Cardinal, regardless of whether such claim is based upon any of the above stated reasons or otherwise.

Relinquished By:	Date: 5/1/17	Received By:	Date: 5/1/17	Time: 4:00pm	Relinquished By:	Date: 5/1/17	Time: 4:40pm	Received By:	Date: 5/1/17	Time: 4:40pm		
Delivered By: (Circle One)	Sampler - UPS - Bus - Other:	Sample Condition	Intact	Checked BY:	Phone Result:	Yes	No	Add'l Phone #:	Fax Result:	Yes	No	Add'l Fax #:

+ Cardinal cannot accept verbal changes. Please fax written changes to 505-393-2476





# ARDINAL LABORATORIES

101 East Marland, Hobbs, NM 88240  
(505) 393-2326 FAX (505) 393-2476

## CHAIN-OF-CUSTODY AND ANALYSIS REQUEST

3 of 2

Company Name: BBC International, Inc.

Project Manager: Cliff Brunson

Address: P.O. Box 805

City: Hobbs

Phone #: 575-397-6388

Project #:

Project Name: Sneydy Bids

Project Location:

Sampler Name: Fred Benson

FOR LAB USE ONLY

Lab I.D.

Sample I.D.

H70124  
21 South Surface  
22 West Surface

(G)RAB OR (C)OMP.

# CONTAINERS

GROUNDWATER

WASTEWATER

SOIL

OIL

SLUDGE

OTHER :

ACID/BASE:

ICE / COOL

OTHER :

DATE TIME

5/1/17 735  
5/1/17 945

TPH

BTEX

CL

### BILL TO

P.O. #:

Company:

Attn:

Address:

City:

State:

Phone #:

Fax #:

### ANALYSIS REQUEST

PLEASE NOTE: Liability and Damages: Cardinal's liability and client's exclusive remedy for any claim arising under this contract or tort, shall be limited to the amount paid by the client for the analyses. All claims, including those for negligence and any other cause whatsoever shall be deemed waived unless made in writing and received by Cardinal within 30 days after completion of the applicable service. In no event shall Cardinal be liable for incidental or consequential damages, including without limitation, business interruption, loss of use, or loss of profits incurred by client, its subsidiaries, affiliates or successors arising out of or related to the performance of services hereunder by Cardinal. Incidence of whether such claim is based upon any of the above stated reasons or otherwise.

Relinquished By:

Date: 5/1/17

Received By:

Relinquished By:

Date: 5-8-17

Received By:

Delivered By: (Circle One)

Sampler - UPS - Bus - Other:

-12.86

Sample Condition  
Cool ☒ Yes ☐ No  
Intact ☒ Yes ☐ No

CHECKED BY: (Initials)

Phone Result: ☐ Yes ☐ No Add'l Phone #:  
Fax Result: ☐ Yes ☐ No Add'l Fax #:

REMARKS:

+ Cardinal cannot accept verbal changes. Please fax written changes to 505-393-2476

June 12, 2017

Cliff Brunson

BBC International, Inc.

P.O. Box 805

Hobbs, NM 88241

RE: SMOKEY BITS CTB

Enclosed are the results of analyses for samples received by the laboratory on 06/06/17 15:50.

Cardinal Laboratories is accredited through Texas NELAP under certificate number T104704398-16-8. Accreditation applies to drinking water, non-potable water and solid and chemical materials. All accredited analytes are denoted by an asterisk (\*). For a complete list of accredited analytes and matrices visit the TCEQ website at [www.tceq.texas.gov/field/qa/lab\\_accred\\_certif.html](http://www.tceq.texas.gov/field/qa/lab_accred_certif.html).

Cardinal Laboratories is accredited through the State of Colorado Department of Public Health and Environment for:

Method EPA 552.2	Haloacetic Acids (HAA-5)
Method EPA 524.2	Total Trihalomethanes (TTHM)
Method EPA 524.4	Regulated VOCs (V1, V2, V3)

Accreditation applies to public drinking water matrices.

This report meets NELAP requirements and is made up of a cover page, analytical results, and a copy of the original chain-of-custody. If you have any questions concerning this report, please feel free to contact me.

Sincerely,



Celey D. Keene

Lab Director/Quality Manager

**Analytical Results For:**

BBC International, Inc.  
Cliff Brunson  
P.O. Box 805  
Hobbs NM, 88241  
Fax To: (575) 397-0397

Received: 06/06/2017  
Reported: 06/12/2017  
Project Name: SMOKEY BITS CTB  
Project Number: NOT GIVEN  
Project Location: EDDY COUNTY, NM

Sampling Date: 05/30/2017  
Sampling Type: Soil  
Sampling Condition: Cool & Intact  
Sample Received By: Tamara Oldaker

**Sample ID: SP1 @ 1' (H701489-01)**

BTX 8021B		mg/kg		Analyzed By: MS					
Analyte	Result	Reporting Limit	Analyzed	Method Blank	BS	% Recovery	True Value QC	RPD	Qualifier
Benzene*	<0.050	0.050	06/08/2017	ND	2.00	99.9	2.00	2.68	
<b>Toluene*</b>	<b>0.139</b>	0.050	06/08/2017	ND	2.00	100	2.00	1.66	
<b>Ethylbenzene*</b>	<b>0.422</b>	0.050	06/08/2017	ND	2.14	107	2.00	2.46	
<b>Total Xylenes*</b>	<b>1.26</b>	0.150	06/08/2017	ND	5.77	96.2	6.00	2.47	
<b>Total BTX</b>	<b>1.82</b>	0.300	06/08/2017	ND					

Surrogate: 4-Bromofluorobenzene (PID) 104 % 72-148

Chloride, SM4500Cl-B		mg/kg		Analyzed By: AC					
Analyte	Result	Reporting Limit	Analyzed	Method Blank	BS	% Recovery	True Value QC	RPD	Qualifier
<b>Chloride</b>	<b>864</b>	16.0	06/07/2017	ND	448	112	400	3.64	

TPH 8015M		mg/kg		Analyzed By: MS					
Analyte	Result	Reporting Limit	Analyzed	Method Blank	BS	% Recovery	True Value QC	RPD	Qualifier
<b>GRO C6-C10</b>	<b>46.0</b>	10.0	06/07/2017	ND	216	108	200	3.30	
<b>DRO &gt;C10-C28</b>	<b>841</b>	10.0	06/07/2017	ND	209	104	200	1.26	

Surrogate: 1-Chlorooctane 108 % 28.3-164

Surrogate: 1-Chlorooctadecane 101 % 34.7-157

Cardinal Laboratories

\*=Accredited Analyte

PLEASE NOTE: Liability and Damages. Cardinal's liability and client's exclusive remedy for any claim arising, whether based in contract or tort, shall be limited to the amount paid by client for analyses. All claims, including those for negligence and any other cause whatsoever shall be deemed waived unless made in writing and received by Cardinal within thirty (30) days after completion of the applicable service. In no event shall Cardinal be liable for incidental or consequential damages, including, without limitation, business interruptions, loss of use, or loss of profits incurred by client, its subsidiaries, affiliates or successors arising out of or related to the performance of the services hereunder by Cardinal, regardless of whether such claim is based upon any of the above stated reasons or otherwise. Results relate only to the samples identified above. This report shall not be reproduced except in full with written approval of Cardinal Laboratories.



Celey D. Keene, Lab Director/Quality Manager



**Analytical Results For:**

BBC International, Inc.  
Cliff Brunson  
P.O. Box 805  
Hobbs NM, 88241  
Fax To: (575) 397-0397

Received: 06/06/2017  
Reported: 06/12/2017  
Project Name: SMOKEY BITS CTB  
Project Number: NOT GIVEN  
Project Location: EDDY COUNTY, NM

Sampling Date: 05/30/2017  
Sampling Type: Soil  
Sampling Condition: Cool & Intact  
Sample Received By: Tamara Oldaker

**Sample ID: SP1 @ 2' (H701489-02)**

BTEx 8021B		mg/kg		Analyzed By: MS					
Analyte	Result	Reporting Limit	Analyzed	Method Blank	BS	% Recovery	True Value QC	RPD	Qualifier
Benzene*	<0.050	0.050	06/08/2017	ND	2.00	99.9	2.00	2.68	
Toluene*	<0.050	0.050	06/08/2017	ND	2.00	100	2.00	1.66	
Ethylbenzene*	<0.050	0.050	06/08/2017	ND	2.14	107	2.00	2.46	
Total Xylenes*	<0.150	0.150	06/08/2017	ND	5.77	96.2	6.00	2.47	
Total BTEx	<0.300	0.300	06/08/2017	ND					

Surrogate: 4-Bromofluorobenzene (PID) 103 % 72-148

Chloride, SM4500CI-B		mg/kg		Analyzed By: AC					
Analyte	Result	Reporting Limit	Analyzed	Method Blank	BS	% Recovery	True Value QC	RPD	Qualifier
Chloride	528	16.0	06/07/2017	ND	448	112	400	3.64	

TPH 8015M		mg/kg		Analyzed By: MS					
Analyte	Result	Reporting Limit	Analyzed	Method Blank	BS	% Recovery	True Value QC	RPD	Qualifier
GRO C6-C10	<10.0	10.0	06/07/2017	ND	216	108	200	3.30	
DRO >C10-C28	<10.0	10.0	06/07/2017	ND	209	104	200	1.26	

Surrogate: 1-Chlorooctane 112 % 28.3-164

Surrogate: 1-Chlorooctadecane 93.9 % 34.7-157

Cardinal Laboratories

\*=Accredited Analyte

PLEASE NOTE: Liability and Damages. Cardinal's liability and client's exclusive remedy for any claim arising, whether based in contract or tort, shall be limited to the amount paid by client for analyses. All claims, including those for negligence and any other cause whatsoever shall be deemed waived unless made in writing and received by Cardinal within thirty (30) days after completion of the applicable service. In no event shall Cardinal be liable for incidental or consequential damages, including, without limitation, business interruptions, loss of use, or loss of profits incurred by client, its subsidiaries, affiliates or successors arising out of or related to the performance of the services hereunder by Cardinal, regardless of whether such claim is based upon any of the above stated reasons or otherwise. Results relate only to the samples identified above. This report shall not be reproduced except in full with written approval of Cardinal Laboratories.



Celey D. Keene, Lab Director/Quality Manager

**Analytical Results For:**

BBC International, Inc.  
Cliff Brunson  
P.O. Box 805  
Hobbs NM, 88241  
Fax To: (575) 397-0397

Received: 06/06/2017  
Reported: 06/12/2017  
Project Name: SMOKEY BITS CTB  
Project Number: NOT GIVEN  
Project Location: EDDY COUNTY, NM

Sampling Date: 05/30/2017  
Sampling Type: Soil  
Sampling Condition: Cool & Intact  
Sample Received By: Tamara Oldaker

**Sample ID: SP1 @ 7' (H701489-03)**

BTEx 8021B		mg/kg		Analyzed By: MS					
Analyte	Result	Reporting Limit	Analyzed	Method Blank	BS	% Recovery	True Value QC	RPD	Qualifier
Benzene*	<0.050	0.050	06/08/2017	ND	2.00	99.9	2.00	2.68	
Toluene*	<0.050	0.050	06/08/2017	ND	2.00	100	2.00	1.66	
Ethylbenzene*	<0.050	0.050	06/08/2017	ND	2.14	107	2.00	2.46	
Total Xylenes*	<0.150	0.150	06/08/2017	ND	5.77	96.2	6.00	2.47	
Total BTEx	<0.300	0.300	06/08/2017	ND					

Surrogate: 4-Bromofluorobenzene (PID) 98.5 % 72-148

Chloride, SM4500CI-B		mg/kg		Analyzed By: AC					
Analyte	Result	Reporting Limit	Analyzed	Method Blank	BS	% Recovery	True Value QC	RPD	Qualifier
Chloride	688	16.0	06/07/2017	ND	448	112	400	3.64	

TPH 8015M		mg/kg		Analyzed By: MS					
Analyte	Result	Reporting Limit	Analyzed	Method Blank	BS	% Recovery	True Value QC	RPD	Qualifier
GRO C6-C10	<10.0	10.0	06/07/2017	ND	216	108	200	3.30	
DRO >C10-C28	32.2	10.0	06/07/2017	ND	209	104	200	1.26	

Surrogate: 1-Chlorooctane 98.2 % 28.3-164

Surrogate: 1-Chlorooctadecane 81.0 % 34.7-157

Cardinal Laboratories

\*=Accredited Analyte

PLEASE NOTE: Liability and Damages. Cardinal's liability and client's exclusive remedy for any claim arising, whether based in contract or tort, shall be limited to the amount paid by client for analyses. All claims, including those for negligence and any other cause whatsoever shall be deemed waived unless made in writing and received by Cardinal within thirty (30) days after completion of the applicable service. In no event shall Cardinal be liable for incidental or consequential damages, including, without limitation, business interruptions, loss of use, or loss of profits incurred by client, its subsidiaries, affiliates or successors arising out of or related to the performance of the services hereunder by Cardinal, regardless of whether such claim is based upon any of the above stated reasons or otherwise. Results relate only to the samples identified above. This report shall not be reproduced except in full with written approval of Cardinal Laboratories.



Celey D. Keene, Lab Director/Quality Manager

**Analytical Results For:**

BBC International, Inc.  
Cliff Brunson  
P.O. Box 805  
Hobbs NM, 88241  
Fax To: (575) 397-0397

Received: 06/06/2017  
Reported: 06/12/2017  
Project Name: SMOKEY BITS CTB  
Project Number: NOT GIVEN  
Project Location: EDDY COUNTY, NM

Sampling Date: 05/30/2017  
Sampling Type: Soil  
Sampling Condition: Cool & Intact  
Sample Received By: Tamara Oldaker

**Sample ID: SP1 @ 12' (H701489-04)**

BTX 8021B		mg/kg		Analyzed By: MS					
Analyte	Result	Reporting Limit	Analyzed	Method Blank	BS	% Recovery	True Value QC	RPD	Qualifier
Benzene*	<0.050	0.050	06/08/2017	ND	2.00	99.9	2.00	2.68	
Toluene*	<0.050	0.050	06/08/2017	ND	2.00	100	2.00	1.66	
Ethylbenzene*	<0.050	0.050	06/08/2017	ND	2.14	107	2.00	2.46	
Total Xylenes*	<0.150	0.150	06/08/2017	ND	5.77	96.2	6.00	2.47	
Total BTX	<0.300	0.300	06/08/2017	ND					

Surrogate: 4-Bromofluorobenzene (PID) 99.2 % 72-148

Chloride, SM4500Cl-B		mg/kg		Analyzed By: AC					
Analyte	Result	Reporting Limit	Analyzed	Method Blank	BS	% Recovery	True Value QC	RPD	Qualifier
Chloride	112	16.0	06/07/2017	ND	448	112	400	3.64	

TPH 8015M		mg/kg		Analyzed By: MS					
Analyte	Result	Reporting Limit	Analyzed	Method Blank	BS	% Recovery	True Value QC	RPD	Qualifier
GRO C6-C10	<10.0	10.0	06/07/2017	ND	216	108	200	3.30	
DRO >C10-C28	<10.0	10.0	06/07/2017	ND	209	104	200	1.26	

Surrogate: 1-Chlorooctane 93.2 % 28.3-164

Surrogate: 1-Chlorooctadecane 77.0 % 34.7-157

Cardinal Laboratories

\*=Accredited Analyte

PLEASE NOTE: Liability and Damages. Cardinal's liability and client's exclusive remedy for any claim arising, whether based in contract or tort, shall be limited to the amount paid by client for analyses. All claims, including those for negligence and any other cause whatsoever shall be deemed waived unless made in writing and received by Cardinal within thirty (30) days after completion of the applicable service. In no event shall Cardinal be liable for incidental or consequential damages, including, without limitation, business interruptions, loss of use, or loss of profits incurred by client, its subsidiaries, affiliates or successors arising out of or related to the performance of the services hereunder by Cardinal, regardless of whether such claim is based upon any of the above stated reasons or otherwise. Results relate only to the samples identified above. This report shall not be reproduced except in full with written approval of Cardinal Laboratories.



Celey D. Keene, Lab Director/Quality Manager

**Analytical Results For:**

BBC International, Inc.  
Cliff Brunson  
P.O. Box 805  
Hobbs NM, 88241  
Fax To: (575) 397-0397

Received: 06/06/2017  
Reported: 06/12/2017  
Project Name: SMOKEY BITS CTB  
Project Number: NOT GIVEN  
Project Location: EDDY COUNTY, NM

Sampling Date: 05/30/2017  
Sampling Type: Soil  
Sampling Condition: Cool & Intact  
Sample Received By: Tamara Oldaker

**Sample ID: SP2 @ 1' (H701489-05)**

BTX 8021B		mg/kg		Analyzed By: MS				S-04	
Analyte	Result	Reporting Limit	Analyzed	Method Blank	BS	% Recovery	True Value QC	RPD	Qualifier
<b>Benzene*</b>	<b>0.399</b>	0.100	06/08/2017	ND	2.00	99.9	2.00	2.68	
<b>Toluene*</b>	<b>10.6</b>	0.100	06/08/2017	ND	2.00	100	2.00	1.66	
<b>Ethylbenzene*</b>	<b>15.7</b>	0.100	06/08/2017	ND	2.14	107	2.00	2.46	
<b>Total Xylenes*</b>	<b>35.5</b>	0.300	06/08/2017	ND	5.77	96.2	6.00	2.47	
<b>Total BTX</b>	<b>62.3</b>	0.600	06/08/2017	ND					

Surrogate: 4-Bromofluorobenzene (PID) 159 % 72-148

Chloride, SM4500CI-B		mg/kg		Analyzed By: AC					
Analyte	Result	Reporting Limit	Analyzed	Method Blank	BS	% Recovery	True Value QC	RPD	Qualifier
<b>Chloride</b>	<b>752</b>	16.0	06/07/2017	ND	448	112	400	3.64	

TPH 8015M		mg/kg		Analyzed By: MS				S-06	
Analyte	Result	Reporting Limit	Analyzed	Method Blank	BS	% Recovery	True Value QC	RPD	Qualifier
<b>GRO C6-C10</b>	<b>898</b>	50.0	06/07/2017	ND	216	108	200	3.30	
<b>DRO &gt;C10-C28</b>	<b>10800</b>	50.0	06/07/2017	ND	209	104	200	1.26	

Surrogate: 1-Chlorooctane 167 % 28.3-164

Surrogate: 1-Chlorooctadecane 261 % 34.7-157

Cardinal Laboratories

\*=Accredited Analyte

PLEASE NOTE: Liability and Damages. Cardinal's liability and client's exclusive remedy for any claim arising, whether based in contract or tort, shall be limited to the amount paid by client for analyses. All claims, including those for negligence and any other cause whatsoever shall be deemed waived unless made in writing and received by Cardinal within thirty (30) days after completion of the applicable service. In no event shall Cardinal be liable for incidental or consequential damages, including, without limitation, business interruptions, loss of use, or loss of profits incurred by client, its subsidiaries, affiliates or successors arising out of or related to the performance of the services hereunder by Cardinal, regardless of whether such claim is based upon any of the above stated reasons or otherwise. Results relate only to the samples identified above. This report shall not be reproduced except in full with written approval of Cardinal Laboratories.



Celey D. Keene, Lab Director/Quality Manager

**Analytical Results For:**

BBC International, Inc.  
Cliff Brunson  
P.O. Box 805  
Hobbs NM, 88241  
Fax To: (575) 397-0397

Received: 06/06/2017  
Reported: 06/12/2017  
Project Name: SMOKEY BITS CTB  
Project Number: NOT GIVEN  
Project Location: EDDY COUNTY, NM

Sampling Date: 05/30/2017  
Sampling Type: Soil  
Sampling Condition: Cool & Intact  
Sample Received By: Tamara Oldaker

**Sample ID: SP2 @ 3' (H701489-06)**

BTX 8021B		mg/kg		Analyzed By: MS					
Analyte	Result	Reporting Limit	Analyzed	Method Blank	BS	% Recovery	True Value QC	RPD	Qualifier
Benzene*	<0.050	0.050	06/08/2017	ND	2.00	99.9	2.00	2.68	
Toluene*	<0.050	0.050	06/08/2017	ND	2.00	100	2.00	1.66	
Ethylbenzene*	0.064	0.050	06/08/2017	ND	2.14	107	2.00	2.46	
Total Xylenes*	0.154	0.150	06/08/2017	ND	5.77	96.2	6.00	2.47	
Total BTX	<0.300	0.300	06/08/2017	ND					

Surrogate: 4-Bromofluorobenzene (PID) 125 % 72-148

Chloride, SM4500CI-B		mg/kg		Analyzed By: AC					
Analyte	Result	Reporting Limit	Analyzed	Method Blank	BS	% Recovery	True Value QC	RPD	Qualifier
Chloride	816	16.0	06/07/2017	ND	448	112	400	3.64	

TPH 8015M		mg/kg		Analyzed By: MS					
Analyte	Result	Reporting Limit	Analyzed	Method Blank	BS	% Recovery	True Value QC	RPD	Qualifier
GRO C6-C10	<10.0	10.0	06/07/2017	ND	216	108	200	3.30	
DRO >C10-C28	144	10.0	06/07/2017	ND	209	104	200	1.26	

Surrogate: 1-Chlorooctane 93.7 % 28.3-164

Surrogate: 1-Chlorooctadecane 84.2 % 34.7-157

Cardinal Laboratories

\*=Accredited Analyte

PLEASE NOTE: Liability and Damages. Cardinal's liability and client's exclusive remedy for any claim arising, whether based in contract or tort, shall be limited to the amount paid by client for analyses. All claims, including those for negligence and any other cause whatsoever shall be deemed waived unless made in writing and received by Cardinal within thirty (30) days after completion of the applicable service. In no event shall Cardinal be liable for incidental or consequential damages, including, without limitation, business interruptions, loss of use, or loss of profits incurred by client, its subsidiaries, affiliates or successors arising out of or related to the performance of the services hereunder by Cardinal, regardless of whether such claim is based upon any of the above stated reasons or otherwise. Results relate only to the samples identified above. This report shall not be reproduced except in full with written approval of Cardinal Laboratories.



Celey D. Keene, Lab Director/Quality Manager

**Analytical Results For:**

 BBC International, Inc.  
 Cliff Brunson  
 P.O. Box 805  
 Hobbs NM, 88241  
 Fax To: (575) 397-0397

 Received: 06/06/2017  
 Reported: 06/12/2017  
 Project Name: SMOKEY BITS CTB  
 Project Number: NOT GIVEN  
 Project Location: EDDY COUNTY, NM

 Sampling Date: 05/30/2017  
 Sampling Type: Soil  
 Sampling Condition: Cool & Intact  
 Sample Received By: Tamara Oldaker

**Sample ID: SP2 @ 9' (H701489-07)**

BTX 8021B		mg/kg		Analyzed By: MS					
Analyte	Result	Reporting Limit	Analyzed	Method Blank	BS	% Recovery	True Value QC	RPD	Qualifier
Benzene*	<0.050	0.050	06/08/2017	ND	2.00	99.9	2.00	2.68	
Toluene*	<0.050	0.050	06/08/2017	ND	2.00	100	2.00	1.66	
Ethylbenzene*	<0.050	0.050	06/08/2017	ND	2.14	107	2.00	2.46	
Total Xylenes*	<0.150	0.150	06/08/2017	ND	5.77	96.2	6.00	2.47	
Total BTX	<0.300	0.300	06/08/2017	ND					

Surrogate: 4-Bromofluorobenzene (PID) 111 % 72-148

Chloride, SM4500CI-B		mg/kg		Analyzed By: AC					
Analyte	Result	Reporting Limit	Analyzed	Method Blank	BS	% Recovery	True Value QC	RPD	Qualifier
Chloride	160	16.0	06/07/2017	ND	448	112	400	3.64	

TPH 8015M		mg/kg		Analyzed By: MS					
Analyte	Result	Reporting Limit	Analyzed	Method Blank	BS	% Recovery	True Value QC	RPD	Qualifier
GRO C6-C10	<10.0	10.0	06/08/2017	ND	216	108	200	3.30	
DRO >C10-C28	68.4	10.0	06/08/2017	ND	209	104	200	1.26	

Surrogate: 1-Chlorooctane 93.0 % 28.3-164

Surrogate: 1-Chlorooctadecane 79.8 % 34.7-157

Cardinal Laboratories

\*=Accredited Analyte

PLEASE NOTE: Liability and Damages. Cardinal's liability and client's exclusive remedy for any claim arising, whether based in contract or tort, shall be limited to the amount paid by client for analyses. All claims, including those for negligence and any other cause whatsoever shall be deemed waived unless made in writing and received by Cardinal within thirty (30) days after completion of the applicable service. In no event shall Cardinal be liable for incidental or consequential damages, including, without limitation, business interruptions, loss of use, or loss of profits incurred by client, its subsidiaries, affiliates or successors arising out of or related to the performance of the services hereunder by Cardinal, regardless of whether such claim is based upon any of the above stated reasons or otherwise. Results relate only to the samples identified above. This report shall not be reproduced except in full with written approval of Cardinal Laboratories.



Celey D. Keene, Lab Director/Quality Manager

**Analytical Results For:**

BBC International, Inc.  
Cliff Brunson  
P.O. Box 805  
Hobbs NM, 88241  
Fax To: (575) 397-0397

Received: 06/06/2017  
Reported: 06/12/2017  
Project Name: SMOKEY BITS CTB  
Project Number: NOT GIVEN  
Project Location: EDDY COUNTY, NM

Sampling Date: 05/30/2017  
Sampling Type: Soil  
Sampling Condition: Cool & Intact  
Sample Received By: Tamara Oldaker

**Sample ID: SP2 @ 14' (H701489-08)**

BTX 8021B		mg/kg		Analyzed By: MS					
Analyte	Result	Reporting Limit	Analyzed	Method Blank	BS	% Recovery	True Value QC	RPD	Qualifier
Benzene*	<0.050	0.050	06/08/2017	ND	2.00	99.9	2.00	2.68	
Toluene*	<0.050	0.050	06/08/2017	ND	2.00	100	2.00	1.66	
Ethylbenzene*	<0.050	0.050	06/08/2017	ND	2.14	107	2.00	2.46	
Total Xylenes*	<0.150	0.150	06/08/2017	ND	5.77	96.2	6.00	2.47	
Total BTX	<0.300	0.300	06/08/2017	ND					

Surrogate: 4-Bromofluorobenzene (PID) 101 % 72-148

Chloride, SM4500CI-B		mg/kg		Analyzed By: AC					
Analyte	Result	Reporting Limit	Analyzed	Method Blank	BS	% Recovery	True Value QC	RPD	Qualifier
Chloride	160	16.0	06/07/2017	ND	448	112	400	3.64	

TPH 8015M		mg/kg		Analyzed By: MS					
Analyte	Result	Reporting Limit	Analyzed	Method Blank	BS	% Recovery	True Value QC	RPD	Qualifier
GRO C6-C10	<10.0	10.0	06/08/2017	ND	216	108	200	3.30	
DRO >C10-C28	65.9	10.0	06/08/2017	ND	209	104	200	1.26	

Surrogate: 1-Chlorooctane 97.7 % 28.3-164

Surrogate: 1-Chlorooctadecane 86.4 % 34.7-157

Cardinal Laboratories

\*=Accredited Analyte

PLEASE NOTE: Liability and Damages. Cardinal's liability and client's exclusive remedy for any claim arising, whether based in contract or tort, shall be limited to the amount paid by client for analyses. All claims, including those for negligence and any other cause whatsoever shall be deemed waived unless made in writing and received by Cardinal within thirty (30) days after completion of the applicable service. In no event shall Cardinal be liable for incidental or consequential damages, including, without limitation, business interruptions, loss of use, or loss of profits incurred by client, its subsidiaries, affiliates or successors arising out of or related to the performance of the services hereunder by Cardinal, regardless of whether such claim is based upon any of the above stated reasons or otherwise. Results relate only to the samples identified above. This report shall not be reproduced except in full with written approval of Cardinal Laboratories.



Celey D. Keene, Lab Director/Quality Manager



**Analytical Results For:**

BBC International, Inc.  
Cliff Brunson  
P.O. Box 805  
Hobbs NM, 88241  
Fax To: (575) 397-0397

Received: 06/06/2017  
Reported: 06/12/2017  
Project Name: SMOKEY BITS CTB  
Project Number: NOT GIVEN  
Project Location: EDDY COUNTY, NM

Sampling Date: 05/30/2017  
Sampling Type: Soil  
Sampling Condition: Cool & Intact  
Sample Received By: Tamara Oldaker

**Sample ID: SP3 @ 1' (H701489-09)**

BTX 8021B		mg/kg		Analyzed By: MS				S-04	
Analyte	Result	Reporting Limit	Analyzed	Method Blank	BS	% Recovery	True Value QC	RPD	Qualifier
<b>Benzene*</b>	<b>0.388</b>	0.100	06/08/2017	ND	2.00	99.9	2.00	2.68	
<b>Toluene*</b>	<b>10.6</b>	0.100	06/08/2017	ND	2.00	100	2.00	1.66	
<b>Ethylbenzene*</b>	<b>14.7</b>	0.100	06/08/2017	ND	2.14	107	2.00	2.46	
<b>Total Xylenes*</b>	<b>34.9</b>	0.300	06/08/2017	ND	5.77	96.2	6.00	2.47	
<b>Total BTX</b>	<b>60.6</b>	0.600	06/08/2017	ND					

Surrogate: 4-Bromofluorobenzene (PID) 149 % 72-148

Chloride, SM4500CI-B		mg/kg		Analyzed By: AC					
Analyte	Result	Reporting Limit	Analyzed	Method Blank	BS	% Recovery	True Value QC	RPD	Qualifier
<b>Chloride</b>	<b>560</b>	16.0	06/07/2017	ND	448	112	400	3.64	

TPH 8015M		mg/kg		Analyzed By: MS				S-06	
Analyte	Result	Reporting Limit	Analyzed	Method Blank	BS	% Recovery	True Value QC	RPD	Qualifier
<b>GRO C6-C10</b>	<b>818</b>	50.0	06/08/2017	ND	216	108	200	3.30	
<b>DRO &gt;C10-C28</b>	<b>12500</b>	50.0	06/08/2017	ND	209	104	200	1.26	

Surrogate: 1-Chlorooctane 206 % 28.3-164

Surrogate: 1-Chlorooctadecane 332 % 34.7-157

Cardinal Laboratories

\*=Accredited Analyte

PLEASE NOTE: Liability and Damages. Cardinal's liability and client's exclusive remedy for any claim arising, whether based in contract or tort, shall be limited to the amount paid by client for analyses. All claims, including those for negligence and any other cause whatsoever shall be deemed waived unless made in writing and received by Cardinal within thirty (30) days after completion of the applicable service. In no event shall Cardinal be liable for incidental or consequential damages, including, without limitation, business interruptions, loss of use, or loss of profits incurred by client, its subsidiaries, affiliates or successors arising out of or related to the performance of the services hereunder by Cardinal, regardless of whether such claim is based upon any of the above stated reasons or otherwise. Results relate only to the samples identified above. This report shall not be reproduced except in full with written approval of Cardinal Laboratories.



Celey D. Keene, Lab Director/Quality Manager

**Analytical Results For:**

BBC International, Inc.  
Cliff Brunson  
P.O. Box 805  
Hobbs NM, 88241  
Fax To: (575) 397-0397

Received: 06/06/2017  
Reported: 06/12/2017  
Project Name: SMOKEY BITS CTB  
Project Number: NOT GIVEN  
Project Location: EDDY COUNTY, NM

Sampling Date: 05/30/2017  
Sampling Type: Soil  
Sampling Condition: Cool & Intact  
Sample Received By: Tamara Oldaker

**Sample ID: SP3 @ 3' (H701489-10)**

BTEx 8021B		mg/kg		Analyzed By: MS						
Analyte	Result	Reporting Limit	Analyzed	Method Blank	BS	% Recovery	True Value QC	RPD	Qualifier	
Benzene*	<0.050	0.050	06/08/2017	ND	2.00	99.9	2.00	2.68		
Toluene*	<0.050	0.050	06/08/2017	ND	2.00	100	2.00	1.66		
Ethylbenzene*	<0.050	0.050	06/08/2017	ND	2.14	107	2.00	2.46		
Total Xylenes*	<0.150	0.150	06/08/2017	ND	5.77	96.2	6.00	2.47		
Total BTEx	<0.300	0.300	06/08/2017	ND						

Surrogate: 4-Bromofluorobenzene (PID) 121 % 72-148

Chloride, SM4500CI-B		mg/kg		Analyzed By: AC					
Analyte	Result	Reporting Limit	Analyzed	Method Blank	BS	% Recovery	True Value QC	RPD	Qualifier
Chloride	880	16.0	06/07/2017	ND	448	112	400	3.64	

TPH 8015M		mg/kg		Analyzed By: MS					
Analyte	Result	Reporting Limit	Analyzed	Method Blank	BS	% Recovery	True Value QC	RPD	Qualifier
GRO C6-C10	<10.0	10.0	06/08/2017	ND	216	108	200	3.30	
DRO >C10-C28	99.2	10.0	06/08/2017	ND	209	104	200	1.26	

Surrogate: 1-Chlorooctane 95.6 % 28.3-164

Surrogate: 1-Chlorooctadecane 86.8 % 34.7-157

Cardinal Laboratories

\*=Accredited Analyte

PLEASE NOTE: Liability and Damages. Cardinal's liability and client's exclusive remedy for any claim arising, whether based in contract or tort, shall be limited to the amount paid by client for analyses. All claims, including those for negligence and any other cause whatsoever shall be deemed waived unless made in writing and received by Cardinal within thirty (30) days after completion of the applicable service. In no event shall Cardinal be liable for incidental or consequential damages, including, without limitation, business interruptions, loss of use, or loss of profits incurred by client, its subsidiaries, affiliates or successors arising out of or related to the performance of the services hereunder by Cardinal, regardless of whether such claim is based upon any of the above stated reasons or otherwise. Results relate only to the samples identified above. This report shall not be reproduced except in full with written approval of Cardinal Laboratories.



Celey D. Keene, Lab Director/Quality Manager

**Analytical Results For:**

BBC International, Inc.  
Cliff Brunson  
P.O. Box 805  
Hobbs NM, 88241  
Fax To: (575) 397-0397

Received: 06/06/2017  
Reported: 06/12/2017  
Project Name: SMOKEY BITS CTB  
Project Number: NOT GIVEN  
Project Location: EDDY COUNTY, NM

Sampling Date: 05/30/2017  
Sampling Type: Soil  
Sampling Condition: Cool & Intact  
Sample Received By: Tamara Oldaker

**Sample ID: SP3 @ 5' (H701489-11)**

BTX 8021B		mg/kg		Analyzed By: MS						
Analyte	Result	Reporting Limit	Analyzed	Method Blank	BS	% Recovery	True Value QC	RPD	Qualifier	
Benzene*	<0.050	0.050	06/08/2017	ND	2.00	99.9	2.00	2.68		
Toluene*	<0.050	0.050	06/08/2017	ND	2.00	100	2.00	1.66		
Ethylbenzene*	<0.050	0.050	06/08/2017	ND	2.14	107	2.00	2.46		
Total Xylenes*	<0.150	0.150	06/08/2017	ND	5.77	96.2	6.00	2.47		
Total BTX	<0.300	0.300	06/08/2017	ND						

Surrogate: 4-Bromofluorobenzene (PID) 110 % 72-148

Chloride, SM4500Cl-B		mg/kg		Analyzed By: AC					
Analyte	Result	Reporting Limit	Analyzed	Method Blank	BS	% Recovery	True Value QC	RPD	Qualifier
Chloride	320	16.0	06/07/2017	ND	464	116	400	14.8	

TPH 8015M		mg/kg		Analyzed By: MS					
Analyte	Result	Reporting Limit	Analyzed	Method Blank	BS	% Recovery	True Value QC	RPD	Qualifier
GRO C6-C10	<10.0	10.0	06/08/2017	ND	216	108	200	3.30	
DRO >C10-C28	<10.0	10.0	06/08/2017	ND	209	104	200	1.26	

Surrogate: 1-Chlorooctane 96.0 % 28.3-164

Surrogate: 1-Chlorooctadecane 79.0 % 34.7-157

Cardinal Laboratories

\*=Accredited Analyte

PLEASE NOTE: Liability and Damages. Cardinal's liability and client's exclusive remedy for any claim arising, whether based in contract or tort, shall be limited to the amount paid by client for analyses. All claims, including those for negligence and any other cause whatsoever shall be deemed waived unless made in writing and received by Cardinal within thirty (30) days after completion of the applicable service. In no event shall Cardinal be liable for incidental or consequential damages, including, without limitation, business interruptions, loss of use, or loss of profits incurred by client, its subsidiaries, affiliates or successors arising out of or related to the performance of the services hereunder by Cardinal, regardless of whether such claim is based upon any of the above stated reasons or otherwise. Results relate only to the samples identified above. This report shall not be reproduced except in full with written approval of Cardinal Laboratories.



Celey D. Keene, Lab Director/Quality Manager

**Analytical Results For:**

BBC International, Inc.  
Cliff Brunson  
P.O. Box 805  
Hobbs NM, 88241  
Fax To: (575) 397-0397

Received: 06/06/2017  
Reported: 06/12/2017  
Project Name: SMOKEY BITS CTB  
Project Number: NOT GIVEN  
Project Location: EDDY COUNTY, NM

Sampling Date: 05/30/2017  
Sampling Type: Soil  
Sampling Condition: Cool & Intact  
Sample Received By: Tamara Oldaker

**Sample ID: SP3 @ 10' (H701489-12)**

BTEx 8021B		mg/kg		Analyzed By: MS						
Analyte	Result	Reporting Limit	Analyzed	Method Blank	BS	% Recovery	True Value QC	RPD	Qualifier	
Benzene*	<0.050	0.050	06/08/2017	ND	2.00	99.9	2.00	2.68		
Toluene*	<0.050	0.050	06/08/2017	ND	2.00	100	2.00	1.66		
Ethylbenzene*	<0.050	0.050	06/08/2017	ND	2.14	107	2.00	2.46		
Total Xylenes*	<0.150	0.150	06/08/2017	ND	5.77	96.2	6.00	2.47		
Total BTEx	<0.300	0.300	06/08/2017	ND						

Surrogate: 4-Bromofluorobenzene (PID) 101 % 72-148

Chloride, SM4500Cl-B		mg/kg		Analyzed By: AC					
Analyte	Result	Reporting Limit	Analyzed	Method Blank	BS	% Recovery	True Value QC	RPD	Qualifier
Chloride	144	16.0	06/07/2017	ND	464	116	400	14.8	

TPH 8015M		mg/kg		Analyzed By: MS					
Analyte	Result	Reporting Limit	Analyzed	Method Blank	BS	% Recovery	True Value QC	RPD	Qualifier
GRO C6-C10	<10.0	10.0	06/08/2017	ND	216	108	200	3.30	
DRO >C10-C28	53.9	10.0	06/08/2017	ND	209	104	200	1.26	

Surrogate: 1-Chlorooctane 97.8 % 28.3-164

Surrogate: 1-Chlorooctadecane 81.2 % 34.7-157

Cardinal Laboratories

\*=Accredited Analyte

PLEASE NOTE: Liability and Damages. Cardinal's liability and client's exclusive remedy for any claim arising, whether based in contract or tort, shall be limited to the amount paid by client for analyses. All claims, including those for negligence and any other cause whatsoever shall be deemed waived unless made in writing and received by Cardinal within thirty (30) days after completion of the applicable service. In no event shall Cardinal be liable for incidental or consequential damages, including, without limitation, business interruptions, loss of use, or loss of profits incurred by client, its subsidiaries, affiliates or successors arising out of or related to the performance of the services hereunder by Cardinal, regardless of whether such claim is based upon any of the above stated reasons or otherwise. Results relate only to the samples identified above. This report shall not be reproduced except in full with written approval of Cardinal Laboratories.



Celey D. Keene, Lab Director/Quality Manager

**Analytical Results For:**

BBC International, Inc.  
Cliff Brunson  
P.O. Box 805  
Hobbs NM, 88241  
Fax To: (575) 397-0397

Received: 06/06/2017  
Reported: 06/12/2017  
Project Name: SMOKEY BITS CTB  
Project Number: NOT GIVEN  
Project Location: EDDY COUNTY, NM

Sampling Date: 05/30/2017  
Sampling Type: Soil  
Sampling Condition: Cool & Intact  
Sample Received By: Tamara Oldaker

**Sample ID: SP3 @ 15' (H701489-13)**

BTX 8021B		mg/kg		Analyzed By: MS					
Analyte	Result	Reporting Limit	Analyzed	Method Blank	BS	% Recovery	True Value QC	RPD	Qualifier
Benzene*	<0.050	0.050	06/08/2017	ND	2.00	99.9	2.00	2.68	
Toluene*	<0.050	0.050	06/08/2017	ND	2.00	100	2.00	1.66	
Ethylbenzene*	<0.050	0.050	06/08/2017	ND	2.14	107	2.00	2.46	
Total Xylenes*	<0.150	0.150	06/08/2017	ND	5.77	96.2	6.00	2.47	
Total BTX	<0.300	0.300	06/08/2017	ND					

Surrogate: 4-Bromofluorobenzene (PID) 99.5 % 72-148

Chloride, SM4500CI-B		mg/kg		Analyzed By: AC					
Analyte	Result	Reporting Limit	Analyzed	Method Blank	BS	% Recovery	True Value QC	RPD	Qualifier
Chloride	176	16.0	06/07/2017	ND	464	116	400	14.8	

TPH 8015M		mg/kg		Analyzed By: MS					
Analyte	Result	Reporting Limit	Analyzed	Method Blank	BS	% Recovery	True Value QC	RPD	Qualifier
GRO C6-C10	<10.0	10.0	06/08/2017	ND	216	108	200	3.30	
DRO >C10-C28	45.8	10.0	06/08/2017	ND	209	104	200	1.26	

Surrogate: 1-Chlorooctane 89.8 % 28.3-164

Surrogate: 1-Chlorooctadecane 77.7 % 34.7-157

Cardinal Laboratories

\*=Accredited Analyte

PLEASE NOTE: Liability and Damages. Cardinal's liability and client's exclusive remedy for any claim arising, whether based in contract or tort, shall be limited to the amount paid by client for analyses. All claims, including those for negligence and any other cause whatsoever shall be deemed waived unless made in writing and received by Cardinal within thirty (30) days after completion of the applicable service. In no event shall Cardinal be liable for incidental or consequential damages, including, without limitation, business interruptions, loss of use, or loss of profits incurred by client, its subsidiaries, affiliates or successors arising out of or related to the performance of the services hereunder by Cardinal, regardless of whether such claim is based upon any of the above stated reasons or otherwise. Results relate only to the samples identified above. This report shall not be reproduced except in full with written approval of Cardinal Laboratories.



Celey D. Keene, Lab Director/Quality Manager

**Analytical Results For:**

BBC International, Inc.  
Cliff Brunson  
P.O. Box 805  
Hobbs NM, 88241  
Fax To: (575) 397-0397

Received: 06/06/2017  
Reported: 06/12/2017  
Project Name: SMOKEY BITS CTB  
Project Number: NOT GIVEN  
Project Location: EDDY COUNTY, NM

Sampling Date: 05/31/2017  
Sampling Type: Soil  
Sampling Condition: Cool & Intact  
Sample Received By: Tamara Oldaker

**Sample ID: SP4 @ 1' (H701489-14)**

BTX 8021B		mg/kg		Analyzed By: MS					
Analyte	Result	Reporting Limit	Analyzed	Method Blank	BS	% Recovery	True Value QC	RPD	Qualifier
Benzene*	<0.050	0.050	06/08/2017	ND	2.00	99.9	2.00	2.68	
Toluene*	<0.050	0.050	06/08/2017	ND	2.00	100	2.00	1.66	
Ethylbenzene*	<0.050	0.050	06/08/2017	ND	2.14	107	2.00	2.46	
Total Xylenes*	<0.150	0.150	06/08/2017	ND	5.77	96.2	6.00	2.47	
Total BTX	<0.300	0.300	06/08/2017	ND					

Surrogate: 4-Bromofluorobenzene (PID) 97.5 % 72-148

Chloride, SM4500CI-B		mg/kg		Analyzed By: AC					
Analyte	Result	Reporting Limit	Analyzed	Method Blank	BS	% Recovery	True Value QC	RPD	Qualifier
Chloride	352	16.0	06/07/2017	ND	464	116	400	14.8	

TPH 8015M		mg/kg		Analyzed By: MS					
Analyte	Result	Reporting Limit	Analyzed	Method Blank	BS	% Recovery	True Value QC	RPD	Qualifier
GRO C6-C10	<10.0	10.0	06/08/2017	ND	216	108	200	3.30	
DRO >C10-C28	34.5	10.0	06/08/2017	ND	209	104	200	1.26	

Surrogate: 1-Chlorooctane 99.1 % 28.3-164

Surrogate: 1-Chlorooctadecane 84.2 % 34.7-157

Cardinal Laboratories

\*=Accredited Analyte

PLEASE NOTE: Liability and Damages. Cardinal's liability and client's exclusive remedy for any claim arising, whether based in contract or tort, shall be limited to the amount paid by client for analyses. All claims, including those for negligence and any other cause whatsoever shall be deemed waived unless made in writing and received by Cardinal within thirty (30) days after completion of the applicable service. In no event shall Cardinal be liable for incidental or consequential damages, including, without limitation, business interruptions, loss of use, or loss of profits incurred by client, its subsidiaries, affiliates or successors arising out of or related to the performance of the services hereunder by Cardinal, regardless of whether such claim is based upon any of the above stated reasons or otherwise. Results relate only to the samples identified above. This report shall not be reproduced except in full with written approval of Cardinal Laboratories.



Celey D. Keene, Lab Director/Quality Manager

**Analytical Results For:**

BBC International, Inc.  
Cliff Brunson  
P.O. Box 805  
Hobbs NM, 88241  
Fax To: (575) 397-0397

Received: 06/06/2017  
Reported: 06/12/2017  
Project Name: SMOKEY BITS CTB  
Project Number: NOT GIVEN  
Project Location: EDDY COUNTY, NM

Sampling Date: 05/31/2017  
Sampling Type: Soil  
Sampling Condition: Cool & Intact  
Sample Received By: Tamara Oldaker

**Sample ID: SP4 @ 2' (H701489-15)**

BTEx 8021B		mg/kg		Analyzed By: MS						
Analyte	Result	Reporting Limit	Analyzed	Method Blank	BS	% Recovery	True Value QC	RPD	Qualifier	
Benzene*	<0.050	0.050	06/08/2017	ND	2.00	99.9	2.00	2.68		
Toluene*	<0.050	0.050	06/08/2017	ND	2.00	100	2.00	1.66		
Ethylbenzene*	<0.050	0.050	06/08/2017	ND	2.14	107	2.00	2.46		
Total Xylenes*	<0.150	0.150	06/08/2017	ND	5.77	96.2	6.00	2.47		
Total BTEx	<0.300	0.300	06/08/2017	ND						

Surrogate: 4-Bromofluorobenzene (PID) 98.6 % 72-148

Chloride, SM4500Cl-B		mg/kg		Analyzed By: AC					
Analyte	Result	Reporting Limit	Analyzed	Method Blank	BS	% Recovery	True Value QC	RPD	Qualifier
Chloride	96.0	16.0	06/07/2017	ND	464	116	400	14.8	

TPH 8015M		mg/kg		Analyzed By: MS					
Analyte	Result	Reporting Limit	Analyzed	Method Blank	BS	% Recovery	True Value QC	RPD	Qualifier
GRO C6-C10	<10.0	10.0	06/08/2017	ND	216	108	200	3.30	
DRO >C10-C28	<10.0	10.0	06/08/2017	ND	209	104	200	1.26	

Surrogate: 1-Chlorooctane 91.1 % 28.3-164

Surrogate: 1-Chlorooctadecane 76.2 % 34.7-157

Cardinal Laboratories

\*=Accredited Analyte

PLEASE NOTE: Liability and Damages. Cardinal's liability and client's exclusive remedy for any claim arising, whether based in contract or tort, shall be limited to the amount paid by client for analyses. All claims, including those for negligence and any other cause whatsoever shall be deemed waived unless made in writing and received by Cardinal within thirty (30) days after completion of the applicable service. In no event shall Cardinal be liable for incidental or consequential damages, including, without limitation, business interruptions, loss of use, or loss of profits incurred by client, its subsidiaries, affiliates or successors arising out of or related to the performance of the services hereunder by Cardinal, regardless of whether such claim is based upon any of the above stated reasons or otherwise. Results relate only to the samples identified above. This report shall not be reproduced except in full with written approval of Cardinal Laboratories.



Celey D. Keene, Lab Director/Quality Manager



**Analytical Results For:**

BBC International, Inc.  
Cliff Brunson  
P.O. Box 805  
Hobbs NM, 88241  
Fax To: (575) 397-0397

Received: 06/06/2017  
Reported: 06/12/2017  
Project Name: SMOKEY BITS CTB  
Project Number: NOT GIVEN  
Project Location: EDDY COUNTY, NM

Sampling Date: 05/31/2017  
Sampling Type: Soil  
Sampling Condition: Cool & Intact  
Sample Received By: Tamara Oldaker

**Sample ID: SP4 @ 7' (H701489-16)**

BTEx 8021B		mg/kg		Analyzed By: MS					
Analyte	Result	Reporting Limit	Analyzed	Method Blank	BS	% Recovery	True Value QC	RPD	Qualifier
Benzene*	<0.050	0.050	06/08/2017	ND	1.90	94.9	2.00	1.95	
Toluene*	<0.050	0.050	06/08/2017	ND	1.88	94.2	2.00	2.10	
Ethylbenzene*	<0.050	0.050	06/08/2017	ND	2.03	102	2.00	2.41	
Total Xylenes*	<0.150	0.150	06/08/2017	ND	5.50	91.7	6.00	2.50	
Total BTEx	<0.300	0.300	06/08/2017	ND					

Surrogate: 4-Bromofluorobenzene (PID) 97.8 % 72-148

Chloride, SM4500CI-B		mg/kg		Analyzed By: AC					
Analyte	Result	Reporting Limit	Analyzed	Method Blank	BS	% Recovery	True Value QC	RPD	Qualifier
Chloride	48.0	16.0	06/07/2017	ND	464	116	400	14.8	

TPH 8015M		mg/kg		Analyzed By: MS					
Analyte	Result	Reporting Limit	Analyzed	Method Blank	BS	% Recovery	True Value QC	RPD	Qualifier
GRO C6-C10	<10.0	10.0	06/08/2017	ND	216	108	200	3.30	
DRO >C10-C28	<10.0	10.0	06/08/2017	ND	209	104	200	1.26	

Surrogate: 1-Chlorooctane 89.8 % 28.3-164

Surrogate: 1-Chlorooctadecane 75.1 % 34.7-157

Cardinal Laboratories

\*=Accredited Analyte

PLEASE NOTE: Liability and Damages. Cardinal's liability and client's exclusive remedy for any claim arising, whether based in contract or tort, shall be limited to the amount paid by client for analyses. All claims, including those for negligence and any other cause whatsoever shall be deemed waived unless made in writing and received by Cardinal within thirty (30) days after completion of the applicable service. In no event shall Cardinal be liable for incidental or consequential damages, including, without limitation, business interruptions, loss of use, or loss of profits incurred by client, its subsidiaries, affiliates or successors arising out of or related to the performance of the services hereunder by Cardinal, regardless of whether such claim is based upon any of the above stated reasons or otherwise. Results relate only to the samples identified above. This report shall not be reproduced except in full with written approval of Cardinal Laboratories.



Celey D. Keene, Lab Director/Quality Manager

**Analytical Results For:**

BBC International, Inc.  
Cliff Brunson  
P.O. Box 805  
Hobbs NM, 88241  
Fax To: (575) 397-0397

Received: 06/06/2017  
Reported: 06/12/2017  
Project Name: SMOKEY BITS CTB  
Project Number: NOT GIVEN  
Project Location: EDDY COUNTY, NM

Sampling Date: 05/31/2017  
Sampling Type: Soil  
Sampling Condition: Cool & Intact  
Sample Received By: Tamara Oldaker

**Sample ID: SP4 @ 12' (H701489-17)**

BTEx 8021B		mg/kg		Analyzed By: MS					
Analyte	Result	Reporting Limit	Analyzed	Method Blank	BS	% Recovery	True Value QC	RPD	Qualifier
Benzene*	<0.050	0.050	06/08/2017	ND	1.90	94.9	2.00	1.95	
Toluene*	<0.050	0.050	06/08/2017	ND	1.88	94.2	2.00	2.10	
Ethylbenzene*	<0.050	0.050	06/08/2017	ND	2.03	102	2.00	2.41	
Total Xylenes*	<0.150	0.150	06/08/2017	ND	5.50	91.7	6.00	2.50	
Total BTEx	<0.300	0.300	06/08/2017	ND					

Surrogate: 4-Bromofluorobenzene (PID) 98.3 % 72-148

Chloride, SM4500CI-B		mg/kg		Analyzed By: AC					
Analyte	Result	Reporting Limit	Analyzed	Method Blank	BS	% Recovery	True Value QC	RPD	Qualifier
Chloride	208	16.0	06/07/2017	ND	464	116	400	14.8	

TPH 8015M		mg/kg		Analyzed By: MS					
Analyte	Result	Reporting Limit	Analyzed	Method Blank	BS	% Recovery	True Value QC	RPD	Qualifier
GRO C6-C10	<10.0	10.0	06/08/2017	ND	216	108	200	3.30	
DRO >C10-C28	38.4	10.0	06/08/2017	ND	209	104	200	1.26	

Surrogate: 1-Chlorooctane 89.6 % 28.3-164

Surrogate: 1-Chlorooctadecane 83.5 % 34.7-157

Cardinal Laboratories

\*=Accredited Analyte

PLEASE NOTE: Liability and Damages. Cardinal's liability and client's exclusive remedy for any claim arising, whether based in contract or tort, shall be limited to the amount paid by client for analyses. All claims, including those for negligence and any other cause whatsoever shall be deemed waived unless made in writing and received by Cardinal within thirty (30) days after completion of the applicable service. In no event shall Cardinal be liable for incidental or consequential damages, including, without limitation, business interruptions, loss of use, or loss of profits incurred by client, its subsidiaries, affiliates or successors arising out of or related to the performance of the services hereunder by Cardinal, regardless of whether such claim is based upon any of the above stated reasons or otherwise. Results relate only to the samples identified above. This report shall not be reproduced except in full with written approval of Cardinal Laboratories.



Celey D. Keene, Lab Director/Quality Manager

**Analytical Results For:**

BBC International, Inc.  
Cliff Brunson  
P.O. Box 805  
Hobbs NM, 88241  
Fax To: (575) 397-0397

Received: 06/06/2017  
Reported: 06/12/2017  
Project Name: SMOKEY BITS CTB  
Project Number: NOT GIVEN  
Project Location: EDDY COUNTY, NM

Sampling Date: 05/31/2017  
Sampling Type: Soil  
Sampling Condition: Cool & Intact  
Sample Received By: Tamara Oldaker

**Sample ID: SP5 @ 1' (H701489-18)**

BTEx 8021B		mg/kg		Analyzed By: MS						
Analyte	Result	Reporting Limit	Analyzed	Method Blank	BS	% Recovery	True Value QC	RPD	Qualifier	
Benzene*	<0.050	0.050	06/08/2017	ND	1.90	94.9	2.00	1.95		
Toluene*	<0.050	0.050	06/08/2017	ND	1.88	94.2	2.00	2.10		
Ethylbenzene*	<0.050	0.050	06/08/2017	ND	2.03	102	2.00	2.41		
Total Xylenes*	<0.150	0.150	06/08/2017	ND	5.50	91.7	6.00	2.50		
Total BTEx	<0.300	0.300	06/08/2017	ND						

Surrogate: 4-Bromofluorobenzene (PID) 98.0 % 72-148

Chloride, SM4500CI-B		mg/kg		Analyzed By: AC					
Analyte	Result	Reporting Limit	Analyzed	Method Blank	BS	% Recovery	True Value QC	RPD	Qualifier
Chloride	400	16.0	06/07/2017	ND	464	116	400	14.8	

TPH 8015M		mg/kg		Analyzed By: MS					
Analyte	Result	Reporting Limit	Analyzed	Method Blank	BS	% Recovery	True Value QC	RPD	Qualifier
GRO C6-C10	<10.0	10.0	06/08/2017	ND	193	96.3	200	0.0364	
DRO >C10-C28	21.0	10.0	06/08/2017	ND	196	98.1	200	2.01	

Surrogate: 1-Chlorooctane 95.9 % 28.3-164

Surrogate: 1-Chlorooctadecane 82.1 % 34.7-157

Cardinal Laboratories

\*=Accredited Analyte

PLEASE NOTE: Liability and Damages. Cardinal's liability and client's exclusive remedy for any claim arising, whether based in contract or tort, shall be limited to the amount paid by client for analyses. All claims, including those for negligence and any other cause whatsoever shall be deemed waived unless made in writing and received by Cardinal within thirty (30) days after completion of the applicable service. In no event shall Cardinal be liable for incidental or consequential damages, including, without limitation, business interruptions, loss of use, or loss of profits incurred by client, its subsidiaries, affiliates or successors arising out of or related to the performance of the services hereunder by Cardinal, regardless of whether such claim is based upon any of the above stated reasons or otherwise. Results relate only to the samples identified above. This report shall not be reproduced except in full with written approval of Cardinal Laboratories.



Celey D. Keene, Lab Director/Quality Manager

**Analytical Results For:**

BBC International, Inc.  
Cliff Brunson  
P.O. Box 805  
Hobbs NM, 88241  
Fax To: (575) 397-0397

Received: 06/06/2017  
Reported: 06/12/2017  
Project Name: SMOKEY BITS CTB  
Project Number: NOT GIVEN  
Project Location: EDDY COUNTY, NM

Sampling Date: 05/31/2017  
Sampling Type: Soil  
Sampling Condition: Cool & Intact  
Sample Received By: Tamara Oldaker

**Sample ID: SP5 @ 2' (H701489-19)**

BTEx 8021B		mg/kg		Analyzed By: MS						
Analyte	Result	Reporting Limit	Analyzed	Method Blank	BS	% Recovery	True Value QC	RPD	Qualifier	
Benzene*	<0.050	0.050	06/08/2017	ND	1.90	94.9	2.00	1.95		
Toluene*	<0.050	0.050	06/08/2017	ND	1.88	94.2	2.00	2.10		
Ethylbenzene*	<0.050	0.050	06/08/2017	ND	2.03	102	2.00	2.41		
Total Xylenes*	<0.150	0.150	06/08/2017	ND	5.50	91.7	6.00	2.50		
Total BTEx	<0.300	0.300	06/08/2017	ND						

Surrogate: 4-Bromofluorobenzene (PID) 98.7 % 72-148

Chloride, SM4500Cl-B		mg/kg		Analyzed By: AC					
Analyte	Result	Reporting Limit	Analyzed	Method Blank	BS	% Recovery	True Value QC	RPD	Qualifier
Chloride	80.0	16.0	06/07/2017	ND	464	116	400	14.8	

TPH 8015M		mg/kg		Analyzed By: MS					
Analyte	Result	Reporting Limit	Analyzed	Method Blank	BS	% Recovery	True Value QC	RPD	Qualifier
GRO C6-C10	<10.0	10.0	06/08/2017	ND	193	96.3	200	0.0364	
DRO >C10-C28	<10.0	10.0	06/08/2017	ND	196	98.1	200	2.01	

Surrogate: 1-Chlorooctane 88.2 % 28.3-164

Surrogate: 1-Chlorooctadecane 76.4 % 34.7-157

Cardinal Laboratories

\*=Accredited Analyte

PLEASE NOTE: Liability and Damages. Cardinal's liability and client's exclusive remedy for any claim arising, whether based in contract or tort, shall be limited to the amount paid by client for analyses. All claims, including those for negligence and any other cause whatsoever shall be deemed waived unless made in writing and received by Cardinal within thirty (30) days after completion of the applicable service. In no event shall Cardinal be liable for incidental or consequential damages, including, without limitation, business interruptions, loss of use, or loss of profits incurred by client, its subsidiaries, affiliates or successors arising out of or related to the performance of the services hereunder by Cardinal, regardless of whether such claim is based upon any of the above stated reasons or otherwise. Results relate only to the samples identified above. This report shall not be reproduced except in full with written approval of Cardinal Laboratories.



Celey D. Keene, Lab Director/Quality Manager

**Analytical Results For:**

BBC International, Inc.  
Cliff Brunson  
P.O. Box 805  
Hobbs NM, 88241  
Fax To: (575) 397-0397

Received: 06/06/2017  
Reported: 06/12/2017  
Project Name: SMOKEY BITS CTB  
Project Number: NOT GIVEN  
Project Location: EDDY COUNTY, NM

Sampling Date: 05/31/2017  
Sampling Type: Soil  
Sampling Condition: Cool & Intact  
Sample Received By: Tamara Oldaker

**Sample ID: SP5 @ 7' (H701489-20)**

BTEx 8021B		mg/kg		Analyzed By: MS					
Analyte	Result	Reporting Limit	Analyzed	Method Blank	BS	% Recovery	True Value QC	RPD	Qualifier
Benzene*	<0.050	0.050	06/08/2017	ND	1.90	94.9	2.00	1.95	
Toluene*	<0.050	0.050	06/08/2017	ND	1.88	94.2	2.00	2.10	
Ethylbenzene*	<0.050	0.050	06/08/2017	ND	2.03	102	2.00	2.41	
Total Xylenes*	<0.150	0.150	06/08/2017	ND	5.50	91.7	6.00	2.50	
Total BTEx	<0.300	0.300	06/08/2017	ND					

Surrogate: 4-Bromofluorobenzene (PID) 97.8 % 72-148

Chloride, SM4500CI-B		mg/kg		Analyzed By: AC					
Analyte	Result	Reporting Limit	Analyzed	Method Blank	BS	% Recovery	True Value QC	RPD	Qualifier
Chloride	64.0	16.0	06/07/2017	ND	464	116	400	14.8	

TPH 8015M		mg/kg		Analyzed By: MS					
Analyte	Result	Reporting Limit	Analyzed	Method Blank	BS	% Recovery	True Value QC	RPD	Qualifier
GRO C6-C10	<10.0	10.0	06/08/2017	ND	193	96.3	200	0.0364	
DRO >C10-C28	<10.0	10.0	06/08/2017	ND	196	98.1	200	2.01	

Surrogate: 1-Chlorooctane 97.8 % 28.3-164

Surrogate: 1-Chlorooctadecane 77.4 % 34.7-157

Cardinal Laboratories

\*=Accredited Analyte

PLEASE NOTE: Liability and Damages. Cardinal's liability and client's exclusive remedy for any claim arising, whether based in contract or tort, shall be limited to the amount paid by client for analyses. All claims, including those for negligence and any other cause whatsoever shall be deemed waived unless made in writing and received by Cardinal within thirty (30) days after completion of the applicable service. In no event shall Cardinal be liable for incidental or consequential damages, including, without limitation, business interruptions, loss of use, or loss of profits incurred by client, its subsidiaries, affiliates or successors arising out of or related to the performance of the services hereunder by Cardinal, regardless of whether such claim is based upon any of the above stated reasons or otherwise. Results relate only to the samples identified above. This report shall not be reproduced except in full with written approval of Cardinal Laboratories.



Celey D. Keene, Lab Director/Quality Manager

**Analytical Results For:**

BBC International, Inc.  
Cliff Brunson  
P.O. Box 805  
Hobbs NM, 88241  
Fax To: (575) 397-0397

Received: 06/06/2017  
Reported: 06/12/2017  
Project Name: SMOKEY BITS CTB  
Project Number: NOT GIVEN  
Project Location: EDDY COUNTY, NM

Sampling Date: 05/31/2017  
Sampling Type: Soil  
Sampling Condition: Cool & Intact  
Sample Received By: Tamara Oldaker

**Sample ID: SP5 @ 12' (H701489-21)**

BTEx 8021B		mg/kg		Analyzed By: MS						
Analyte	Result	Reporting Limit	Analyzed	Method Blank	BS	% Recovery	True Value QC	RPD	Qualifier	
Benzene*	<0.050	0.050	06/08/2017	ND	1.90	94.9	2.00	1.95		
Toluene*	<0.050	0.050	06/08/2017	ND	1.88	94.2	2.00	2.10		
Ethylbenzene*	<0.050	0.050	06/08/2017	ND	2.03	102	2.00	2.41		
Total Xylenes*	<0.150	0.150	06/08/2017	ND	5.50	91.7	6.00	2.50		
Total BTEx	<0.300	0.300	06/08/2017	ND						

Surrogate: 4-Bromofluorobenzene (PID) 98.1 % 72-148

Chloride, SM4500Cl-B		mg/kg		Analyzed By: AC					
Analyte	Result	Reporting Limit	Analyzed	Method Blank	BS	% Recovery	True Value QC	RPD	Qualifier
Chloride	192	16.0	06/07/2017	ND	464	116	400	14.8	

TPH 8015M		mg/kg		Analyzed By: MS					
Analyte	Result	Reporting Limit	Analyzed	Method Blank	BS	% Recovery	True Value QC	RPD	Qualifier
GRO C6-C10	<10.0	10.0	06/08/2017	ND	193	96.3	200	0.0364	
DRO >C10-C28	37.1	10.0	06/08/2017	ND	196	98.1	200	2.01	

Surrogate: 1-Chlorooctane 93.9 % 28.3-164

Surrogate: 1-Chlorooctadecane 79.6 % 34.7-157

Cardinal Laboratories

\*=Accredited Analyte

PLEASE NOTE: Liability and Damages. Cardinal's liability and client's exclusive remedy for any claim arising, whether based in contract or tort, shall be limited to the amount paid by client for analyses. All claims, including those for negligence and any other cause whatsoever shall be deemed waived unless made in writing and received by Cardinal within thirty (30) days after completion of the applicable service. In no event shall Cardinal be liable for incidental or consequential damages, including, without limitation, business interruptions, loss of use, or loss of profits incurred by client, its subsidiaries, affiliates or successors arising out of or related to the performance of the services hereunder by Cardinal, regardless of whether such claim is based upon any of the above stated reasons or otherwise. Results relate only to the samples identified above. This report shall not be reproduced except in full with written approval of Cardinal Laboratories.



Celey D. Keene, Lab Director/Quality Manager

**Analytical Results For:**

BBC International, Inc.  
Cliff Brunson  
P.O. Box 805  
Hobbs NM, 88241  
Fax To: (575) 397-0397

Received: 06/06/2017  
Reported: 06/12/2017  
Project Name: SMOKEY BITS CTB  
Project Number: NOT GIVEN  
Project Location: EDDY COUNTY, NM

Sampling Date: 05/31/2017  
Sampling Type: Soil  
Sampling Condition: Cool & Intact  
Sample Received By: Tamara Oldaker

**Sample ID: SP6 @ 1' (H701489-22)**

BTEx 8021B		mg/kg		Analyzed By: MS					
Analyte	Result	Reporting Limit	Analyzed	Method Blank	BS	% Recovery	True Value QC	RPD	Qualifier
Benzene*	<0.050	0.050	06/08/2017	ND	1.90	94.9	2.00	1.95	
Toluene*	<0.050	0.050	06/08/2017	ND	1.88	94.2	2.00	2.10	
Ethylbenzene*	<0.050	0.050	06/08/2017	ND	2.03	102	2.00	2.41	
Total Xylenes*	<0.150	0.150	06/08/2017	ND	5.50	91.7	6.00	2.50	
Total BTEx	<0.300	0.300	06/08/2017	ND					

Surrogate: 4-Bromofluorobenzene (PID) 99.7 % 72-148

Chloride, SM4500CI-B		mg/kg		Analyzed By: AC					
Analyte	Result	Reporting Limit	Analyzed	Method Blank	BS	% Recovery	True Value QC	RPD	Qualifier
Chloride	80.0	16.0	06/07/2017	ND	464	116	400	14.8	

TPH 8015M		mg/kg		Analyzed By: MS					
Analyte	Result	Reporting Limit	Analyzed	Method Blank	BS	% Recovery	True Value QC	RPD	Qualifier
GRO C6-C10	<10.0	10.0	06/08/2017	ND	193	96.3	200	0.0364	
DRO >C10-C28	127	10.0	06/08/2017	ND	196	98.1	200	2.01	

Surrogate: 1-Chlorooctane 105 % 28.3-164

Surrogate: 1-Chlorooctadecane 89.9 % 34.7-157

Cardinal Laboratories

\*=Accredited Analyte

PLEASE NOTE: Liability and Damages. Cardinal's liability and client's exclusive remedy for any claim arising, whether based in contract or tort, shall be limited to the amount paid by client for analyses. All claims, including those for negligence and any other cause whatsoever shall be deemed waived unless made in writing and received by Cardinal within thirty (30) days after completion of the applicable service. In no event shall Cardinal be liable for incidental or consequential damages, including, without limitation, business interruptions, loss of use, or loss of profits incurred by client, its subsidiaries, affiliates or successors arising out of or related to the performance of the services hereunder by Cardinal, regardless of whether such claim is based upon any of the above stated reasons or otherwise. Results relate only to the samples identified above. This report shall not be reproduced except in full with written approval of Cardinal Laboratories.



Celey D. Keene, Lab Director/Quality Manager

**Analytical Results For:**

BBC International, Inc.  
Cliff Brunson  
P.O. Box 805  
Hobbs NM, 88241  
Fax To: (575) 397-0397

Received: 06/06/2017  
Reported: 06/12/2017  
Project Name: SMOKEY BITS CTB  
Project Number: NOT GIVEN  
Project Location: EDDY COUNTY, NM

Sampling Date: 05/31/2017  
Sampling Type: Soil  
Sampling Condition: Cool & Intact  
Sample Received By: Tamara Oldaker

**Sample ID: SP6 @ 2' (H701489-23)**

BTEx 8021B		mg/kg		Analyzed By: MS					
Analyte	Result	Reporting Limit	Analyzed	Method Blank	BS	% Recovery	True Value QC	RPD	Qualifier
Benzene*	<0.050	0.050	06/08/2017	ND	1.90	94.9	2.00	1.95	
Toluene*	<0.050	0.050	06/08/2017	ND	1.88	94.2	2.00	2.10	
Ethylbenzene*	<0.050	0.050	06/08/2017	ND	2.03	102	2.00	2.41	
Total Xylenes*	<0.150	0.150	06/08/2017	ND	5.50	91.7	6.00	2.50	
Total BTEx	<0.300	0.300	06/08/2017	ND					

Surrogate: 4-Bromofluorobenzene (PID) 98.3 % 72-148

Chloride, SM4500CI-B		mg/kg		Analyzed By: AC					
Analyte	Result	Reporting Limit	Analyzed	Method Blank	BS	% Recovery	True Value QC	RPD	Qualifier
Chloride	32.0	16.0	06/07/2017	ND	464	116	400	14.8	

TPH 8015M		mg/kg		Analyzed By: MS					
Analyte	Result	Reporting Limit	Analyzed	Method Blank	BS	% Recovery	True Value QC	RPD	Qualifier
GRO C6-C10	<10.0	10.0	06/08/2017	ND	193	96.3	200	0.0364	
DRO >C10-C28	88.0	10.0	06/08/2017	ND	196	98.1	200	2.01	

Surrogate: 1-Chlorooctane 101 % 28.3-164

Surrogate: 1-Chlorooctadecane 84.9 % 34.7-157

Cardinal Laboratories

\*=Accredited Analyte

PLEASE NOTE: Liability and Damages. Cardinal's liability and client's exclusive remedy for any claim arising, whether based in contract or tort, shall be limited to the amount paid by client for analyses. All claims, including those for negligence and any other cause whatsoever shall be deemed waived unless made in writing and received by Cardinal within thirty (30) days after completion of the applicable service. In no event shall Cardinal be liable for incidental or consequential damages, including, without limitation, business interruptions, loss of use, or loss of profits incurred by client, its subsidiaries, affiliates or successors arising out of or related to the performance of the services hereunder by Cardinal, regardless of whether such claim is based upon any of the above stated reasons or otherwise. Results relate only to the samples identified above. This report shall not be reproduced except in full with written approval of Cardinal Laboratories.



Celey D. Keene, Lab Director/Quality Manager



**Analytical Results For:**

BBC International, Inc.  
Cliff Brunson  
P.O. Box 805  
Hobbs NM, 88241  
Fax To: (575) 397-0397

Received: 06/06/2017  
Reported: 06/12/2017  
Project Name: SMOKEY BITS CTB  
Project Number: NOT GIVEN  
Project Location: EDDY COUNTY, NM

Sampling Date: 05/31/2017  
Sampling Type: Soil  
Sampling Condition: Cool & Intact  
Sample Received By: Tamara Oldaker

**Sample ID: SP6 @ 3' (H701489-24)**

BTEx 8021B		mg/kg		Analyzed By: MS						
Analyte	Result	Reporting Limit	Analyzed	Method Blank	BS	% Recovery	True Value QC	RPD	Qualifier	
Benzene*	<0.050	0.050	06/08/2017	ND	1.90	94.9	2.00	1.95		
Toluene*	<0.050	0.050	06/08/2017	ND	1.88	94.2	2.00	2.10		
Ethylbenzene*	<0.050	0.050	06/08/2017	ND	2.03	102	2.00	2.41		
Total Xylenes*	<0.150	0.150	06/08/2017	ND	5.50	91.7	6.00	2.50		
Total BTEx	<0.300	0.300	06/08/2017	ND						

Surrogate: 4-Bromofluorobenzene (PID) 99.3 % 72-148

Chloride, SM4500Cl-B		mg/kg		Analyzed By: AC						
Analyte	Result	Reporting Limit	Analyzed	Method Blank	BS	% Recovery	True Value QC	RPD	Qualifier	
Chloride	<16.0	16.0	06/07/2017	ND	464	116	400	14.8		

TPH 8015M		mg/kg		Analyzed By: MS					
Analyte	Result	Reporting Limit	Analyzed	Method Blank	BS	% Recovery	True Value QC	RPD	Qualifier
GRO C6-C10	<10.0	10.0	06/09/2017	ND	193	96.3	200	0.0364	
DRO >C10-C28	<10.0	10.0	06/09/2017	ND	196	98.1	200	2.01	

Surrogate: 1-Chlorooctane 85.2 % 28.3-164

Surrogate: 1-Chlorooctadecane 75.9 % 34.7-157

Cardinal Laboratories

\*=Accredited Analyte

PLEASE NOTE: Liability and Damages. Cardinal's liability and client's exclusive remedy for any claim arising, whether based in contract or tort, shall be limited to the amount paid by client for analyses. All claims, including those for negligence and any other cause whatsoever shall be deemed waived unless made in writing and received by Cardinal within thirty (30) days after completion of the applicable service. In no event shall Cardinal be liable for incidental or consequential damages, including, without limitation, business interruptions, loss of use, or loss of profits incurred by client, its subsidiaries, affiliates or successors arising out of or related to the performance of the services hereunder by Cardinal, regardless of whether such claim is based upon any of the above stated reasons or otherwise. Results relate only to the samples identified above. This report shall not be reproduced except in full with written approval of Cardinal Laboratories.



Celey D. Keene, Lab Director/Quality Manager

**Analytical Results For:**

BBC International, Inc.  
Cliff Brunson  
P.O. Box 805  
Hobbs NM, 88241  
Fax To: (575) 397-0397

Received: 06/06/2017  
Reported: 06/12/2017  
Project Name: SMOKEY BITS CTB  
Project Number: NOT GIVEN  
Project Location: EDDY COUNTY, NM

Sampling Date: 05/31/2017  
Sampling Type: Soil  
Sampling Condition: Cool & Intact  
Sample Received By: Tamara Oldaker

**Sample ID: SP6 @ 8' (H701489-25)**

BTEx 8021B		mg/kg		Analyzed By: MS						
Analyte	Result	Reporting Limit	Analyzed	Method Blank	BS	% Recovery	True Value QC	RPD	Qualifier	
Benzene*	<0.050	0.050	06/08/2017	ND	1.90	94.9	2.00	1.95		
Toluene*	<0.050	0.050	06/08/2017	ND	1.88	94.2	2.00	2.10		
Ethylbenzene*	<0.050	0.050	06/08/2017	ND	2.03	102	2.00	2.41		
Total Xylenes*	<0.150	0.150	06/08/2017	ND	5.50	91.7	6.00	2.50		
Total BTEx	<0.300	0.300	06/08/2017	ND						

Surrogate: 4-Bromofluorobenzene (PID) 98.9 % 72-148

Chloride, SM4500Cl-B		mg/kg		Analyzed By: AC					
Analyte	Result	Reporting Limit	Analyzed	Method Blank	BS	% Recovery	True Value QC	RPD	Qualifier
Chloride	96.0	16.0	06/07/2017	ND	464	116	400	14.8	

TPH 8015M		mg/kg		Analyzed By: MS					
Analyte	Result	Reporting Limit	Analyzed	Method Blank	BS	% Recovery	True Value QC	RPD	Qualifier
GRO C6-C10	<10.0	10.0	06/09/2017	ND	193	96.3	200	0.0364	
DRO >C10-C28	<10.0	10.0	06/09/2017	ND	196	98.1	200	2.01	

Surrogate: 1-Chlorooctane 92.4 % 28.3-164

Surrogate: 1-Chlorooctadecane 85.7 % 34.7-157

Cardinal Laboratories

\*=Accredited Analyte

PLEASE NOTE: Liability and Damages. Cardinal's liability and client's exclusive remedy for any claim arising, whether based in contract or tort, shall be limited to the amount paid by client for analyses. All claims, including those for negligence and any other cause whatsoever shall be deemed waived unless made in writing and received by Cardinal within thirty (30) days after completion of the applicable service. In no event shall Cardinal be liable for incidental or consequential damages, including, without limitation, business interruptions, loss of use, or loss of profits incurred by client, its subsidiaries, affiliates or successors arising out of or related to the performance of the services hereunder by Cardinal, regardless of whether such claim is based upon any of the above stated reasons or otherwise. Results relate only to the samples identified above. This report shall not be reproduced except in full with written approval of Cardinal Laboratories.



Celey D. Keene, Lab Director/Quality Manager

**Analytical Results For:**

BBC International, Inc.  
Cliff Brunson  
P.O. Box 805  
Hobbs NM, 88241  
Fax To: (575) 397-0397

Received: 06/06/2017  
Reported: 06/12/2017  
Project Name: SMOKEY BITS CTB  
Project Number: NOT GIVEN  
Project Location: EDDY COUNTY, NM

Sampling Date: 05/31/2017  
Sampling Type: Soil  
Sampling Condition: Cool & Intact  
Sample Received By: Tamara Oldaker

**Sample ID: SP6 @ 13' (H701489-26)**

BTEx 8021B		mg/kg		Analyzed By: MS					
Analyte	Result	Reporting Limit	Analyzed	Method Blank	BS	% Recovery	True Value QC	RPD	Qualifier
Benzene*	<0.050	0.050	06/09/2017	ND	1.90	94.9	2.00	1.95	
Toluene*	<0.050	0.050	06/09/2017	ND	1.88	94.2	2.00	2.10	
Ethylbenzene*	<0.050	0.050	06/09/2017	ND	2.03	102	2.00	2.41	
Total Xylenes*	<0.150	0.150	06/09/2017	ND	5.50	91.7	6.00	2.50	
Total BTEx	<0.300	0.300	06/09/2017	ND					

Surrogate: 4-Bromofluorobenzene (PID) 98.8 % 72-148

Chloride, SM4500Cl-B		mg/kg		Analyzed By: AC					
Analyte	Result	Reporting Limit	Analyzed	Method Blank	BS	% Recovery	True Value QC	RPD	Qualifier
Chloride	96.0	16.0	06/07/2017	ND	464	116	400	14.8	

TPH 8015M		mg/kg		Analyzed By: MS					
Analyte	Result	Reporting Limit	Analyzed	Method Blank	BS	% Recovery	True Value QC	RPD	Qualifier
GRO C6-C10	<10.0	10.0	06/09/2017	ND	193	96.3	200	0.0364	
DRO >C10-C28	<10.0	10.0	06/09/2017	ND	196	98.1	200	2.01	

Surrogate: 1-Chlorooctane 91.6 % 28.3-164

Surrogate: 1-Chlorooctadecane 78.7 % 34.7-157

Cardinal Laboratories

\*=Accredited Analyte

PLEASE NOTE: Liability and Damages. Cardinal's liability and client's exclusive remedy for any claim arising, whether based in contract or tort, shall be limited to the amount paid by client for analyses. All claims, including those for negligence and any other cause whatsoever shall be deemed waived unless made in writing and received by Cardinal within thirty (30) days after completion of the applicable service. In no event shall Cardinal be liable for incidental or consequential damages, including, without limitation, business interruptions, loss of use, or loss of profits incurred by client, its subsidiaries, affiliates or successors arising out of or related to the performance of the services hereunder by Cardinal, regardless of whether such claim is based upon any of the above stated reasons or otherwise. Results relate only to the samples identified above. This report shall not be reproduced except in full with written approval of Cardinal Laboratories.



Celey D. Keene, Lab Director/Quality Manager

**Analytical Results For:**

BBC International, Inc.  
Cliff Brunson  
P.O. Box 805  
Hobbs NM, 88241  
Fax To: (575) 397-0397

Received: 06/06/2017  
Reported: 06/12/2017  
Project Name: SMOKEY BITS CTB  
Project Number: NOT GIVEN  
Project Location: EDDY COUNTY, NM

Sampling Date: 05/31/2017  
Sampling Type: Soil  
Sampling Condition: Cool & Intact  
Sample Received By: Tamara Oldaker

**Sample ID: SP7 @ 1' (H701489-27)**

BTEx 8021B		mg/kg		Analyzed By: MS					
Analyte	Result	Reporting Limit	Analyzed	Method Blank	BS	% Recovery	True Value QC	RPD	Qualifier
Benzene*	0.417	0.200	06/09/2017	ND	1.90	94.9	2.00	1.95	
Toluene*	10.6	0.200	06/09/2017	ND	1.88	94.2	2.00	2.10	
Ethylbenzene*	15.4	0.200	06/09/2017	ND	2.03	102	2.00	2.41	
Total Xylenes*	35.4	0.600	06/09/2017	ND	5.50	91.7	6.00	2.50	
Total BTEx	61.9	1.20	06/09/2017	ND					

Surrogate: 4-Bromofluorobenzene (PID) 132 % 72-148

Chloride, SM4500CI-B		mg/kg		Analyzed By: AC					
Analyte	Result	Reporting Limit	Analyzed	Method Blank	BS	% Recovery	True Value QC	RPD	Qualifier
Chloride	176	16.0	06/07/2017	ND	464	116	400	14.8	

TPH 8015M		mg/kg		Analyzed By: MS				S-06	
Analyte	Result	Reporting Limit	Analyzed	Method Blank	BS	% Recovery	True Value QC	RPD	Qualifier
GRO C6-C10	841	50.0	06/09/2017	ND	193	96.3	200	0.0364	
DRO >C10-C28	10800	50.0	06/09/2017	ND	196	98.1	200	2.01	

Surrogate: 1-Chlorooctane 155 % 28.3-164

Surrogate: 1-Chlorooctadecane 272 % 34.7-157

Cardinal Laboratories

\*=Accredited Analyte

PLEASE NOTE: Liability and Damages. Cardinal's liability and client's exclusive remedy for any claim arising, whether based in contract or tort, shall be limited to the amount paid by client for analyses. All claims, including those for negligence and any other cause whatsoever shall be deemed waived unless made in writing and received by Cardinal within thirty (30) days after completion of the applicable service. In no event shall Cardinal be liable for incidental or consequential damages, including, without limitation, business interruptions, loss of use, or loss of profits incurred by client, its subsidiaries, affiliates or successors arising out of or related to the performance of the services hereunder by Cardinal, regardless of whether such claim is based upon any of the above stated reasons or otherwise. Results relate only to the samples identified above. This report shall not be reproduced except in full with written approval of Cardinal Laboratories.



Celey D. Keene, Lab Director/Quality Manager

**Analytical Results For:**

BBC International, Inc.  
Cliff Brunson  
P.O. Box 805  
Hobbs NM, 88241  
Fax To: (575) 397-0397

Received: 06/06/2017  
Reported: 06/12/2017  
Project Name: SMOKEY BITS CTB  
Project Number: NOT GIVEN  
Project Location: EDDY COUNTY, NM

Sampling Date: 05/31/2017  
Sampling Type: Soil  
Sampling Condition: Cool & Intact  
Sample Received By: Tamara Oldaker

**Sample ID: SP7 @ 2' (H701489-28)**

BTX 8021B		mg/kg		Analyzed By: MS				S-04	
Analyte	Result	Reporting Limit	Analyzed	Method Blank	BS	% Recovery	True Value QC	RPD	Qualifier
Benzene*	0.345	0.200	06/09/2017	ND	1.90	94.9	2.00	1.95	
Toluene*	10.1	0.200	06/09/2017	ND	1.88	94.2	2.00	2.10	
Ethylbenzene*	21.3	0.200	06/09/2017	ND	2.03	102	2.00	2.41	
Total Xylenes*	51.5	0.600	06/09/2017	ND	5.50	91.7	6.00	2.50	
Total BTEX	83.2	1.20	06/09/2017	ND					

Surrogate: 4-Bromofluorobenzene (PID) 171 % 72-148

Chloride, SM4500Cl-B		mg/kg		Analyzed By: AC						
Analyte	Result	Reporting Limit	Analyzed	Method Blank	BS	% Recovery	True Value QC	RPD	Qualifier	
Chloride	<16.0	16.0	06/07/2017	ND	464	116	400	14.8		

TPH 8015M		mg/kg		Analyzed By: MS				S-06	
Analyte	Result	Reporting Limit	Analyzed	Method Blank	BS	% Recovery	True Value QC	RPD	Qualifier
GRO C6-C10	1460	50.0	06/09/2017	ND	193	96.3	200	0.0364	
DRO >C10-C28	12700	50.0	06/09/2017	ND	196	98.1	200	2.01	

Surrogate: 1-Chlorooctane 175 % 28.3-164

Surrogate: 1-Chlorooctadecane 297 % 34.7-157

Cardinal Laboratories

\*=Accredited Analyte

PLEASE NOTE: Liability and Damages. Cardinal's liability and client's exclusive remedy for any claim arising, whether based in contract or tort, shall be limited to the amount paid by client for analyses. All claims, including those for negligence and any other cause whatsoever shall be deemed waived unless made in writing and received by Cardinal within thirty (30) days after completion of the applicable service. In no event shall Cardinal be liable for incidental or consequential damages, including, without limitation, business interruptions, loss of use, or loss of profits incurred by client, its subsidiaries, affiliates or successors arising out of or related to the performance of the services hereunder by Cardinal, regardless of whether such claim is based upon any of the above stated reasons or otherwise. Results relate only to the samples identified above. This report shall not be reproduced except in full with written approval of Cardinal Laboratories.



Celey D. Keene, Lab Director/Quality Manager

**Analytical Results For:**

BBC International, Inc.  
Cliff Brunson  
P.O. Box 805  
Hobbs NM, 88241  
Fax To: (575) 397-0397

Received: 06/06/2017  
Reported: 06/12/2017  
Project Name: SMOKEY BITS CTB  
Project Number: NOT GIVEN  
Project Location: EDDY COUNTY, NM

Sampling Date: 05/31/2017  
Sampling Type: Soil  
Sampling Condition: Cool & Intact  
Sample Received By: Tamara Oldaker

**Sample ID: SP7 @ 4' (H701489-29)**

BTX 8021B		mg/kg		Analyzed By: MS					
Analyte	Result	Reporting Limit	Analyzed	Method Blank	BS	% Recovery	True Value QC	RPD	Qualifier
Benzene*	<0.050	0.050	06/09/2017	ND	1.90	94.9	2.00	1.95	
Toluene*	0.994	0.050	06/09/2017	ND	1.88	94.2	2.00	2.10	
Ethylbenzene*	1.84	0.050	06/09/2017	ND	2.03	102	2.00	2.41	
Total Xylenes*	4.31	0.150	06/09/2017	ND	5.50	91.7	6.00	2.50	
Total BTX	7.14	0.300	06/09/2017	ND					

Surrogate: 4-Bromofluorobenzene (PID) 140 % 72-148

Chloride, SM4500CI-B		mg/kg		Analyzed By: AC					
Analyte	Result	Reporting Limit	Analyzed	Method Blank	BS	% Recovery	True Value QC	RPD	Qualifier
Chloride	<16.0	16.0	06/07/2017	ND	464	116	400	14.8	

TPH 8015M		mg/kg		Analyzed By: MS					
Analyte	Result	Reporting Limit	Analyzed	Method Blank	BS	% Recovery	True Value QC	RPD	Qualifier
GRO C6-C10	126	50.0	06/09/2017	ND	193	96.3	200	0.0364	
DRO >C10-C28	3270	50.0	06/09/2017	ND	196	98.1	200	2.01	

Surrogate: 1-Chlorooctane 99.1 % 28.3-164

Surrogate: 1-Chlorooctadecane 115 % 34.7-157

Cardinal Laboratories

\*=Accredited Analyte

PLEASE NOTE: Liability and Damages. Cardinal's liability and client's exclusive remedy for any claim arising, whether based in contract or tort, shall be limited to the amount paid by client for analyses. All claims, including those for negligence and any other cause whatsoever shall be deemed waived unless made in writing and received by Cardinal within thirty (30) days after completion of the applicable service. In no event shall Cardinal be liable for incidental or consequential damages, including, without limitation, business interruptions, loss of use, or loss of profits incurred by client, its subsidiaries, affiliates or successors arising out of or related to the performance of the services hereunder by Cardinal, regardless of whether such claim is based upon any of the above stated reasons or otherwise. Results relate only to the samples identified above. This report shall not be reproduced except in full with written approval of Cardinal Laboratories.



Celey D. Keene, Lab Director/Quality Manager

**Analytical Results For:**

BBC International, Inc.  
Cliff Brunson  
P.O. Box 805  
Hobbs NM, 88241  
Fax To: (575) 397-0397

Received: 06/06/2017  
Reported: 06/12/2017  
Project Name: SMOKEY BITS CTB  
Project Number: NOT GIVEN  
Project Location: EDDY COUNTY, NM

Sampling Date: 05/31/2017  
Sampling Type: Soil  
Sampling Condition: Cool & Intact  
Sample Received By: Tamara Oldaker

**Sample ID: SP7 @ 9' (H701489-30)**

BTEx 8021B		mg/kg		Analyzed By: MS					
Analyte	Result	Reporting Limit	Analyzed	Method Blank	BS	% Recovery	True Value QC	RPD	Qualifier
Benzene*	<0.050	0.050	06/09/2017	ND	1.90	94.9	2.00	1.95	
Toluene*	<0.050	0.050	06/09/2017	ND	1.88	94.2	2.00	2.10	
Ethylbenzene*	<0.050	0.050	06/09/2017	ND	2.03	102	2.00	2.41	
Total Xylenes*	<0.150	0.150	06/09/2017	ND	5.50	91.7	6.00	2.50	
Total BTEx	<0.300	0.300	06/09/2017	ND					

Surrogate: 4-Bromofluorobenzene (PID) 117 % 72-148

Chloride, SM4500CI-B		mg/kg		Analyzed By: AC					
Analyte	Result	Reporting Limit	Analyzed	Method Blank	BS	% Recovery	True Value QC	RPD	Qualifier
Chloride	32.0	16.0	06/07/2017	ND	464	116	400	14.8	

TPH 8015M		mg/kg		Analyzed By: MS					
Analyte	Result	Reporting Limit	Analyzed	Method Blank	BS	% Recovery	True Value QC	RPD	Qualifier
GRO C6-C10	<10.0	10.0	06/09/2017	ND	193	96.3	200	0.0364	
DRO >C10-C28	<10.0	10.0	06/09/2017	ND	196	98.1	200	2.01	

Surrogate: 1-Chlorooctane 89.7 % 28.3-164

Surrogate: 1-Chlorooctadecane 75.0 % 34.7-157

Cardinal Laboratories

\*=Accredited Analyte

PLEASE NOTE: Liability and Damages. Cardinal's liability and client's exclusive remedy for any claim arising, whether based in contract or tort, shall be limited to the amount paid by client for analyses. All claims, including those for negligence and any other cause whatsoever shall be deemed waived unless made in writing and received by Cardinal within thirty (30) days after completion of the applicable service. In no event shall Cardinal be liable for incidental or consequential damages, including, without limitation, business interruptions, loss of use, or loss of profits incurred by client, its subsidiaries, affiliates or successors arising out of or related to the performance of the services hereunder by Cardinal, regardless of whether such claim is based upon any of the above stated reasons or otherwise. Results relate only to the samples identified above. This report shall not be reproduced except in full with written approval of Cardinal Laboratories.



Celey D. Keene, Lab Director/Quality Manager



**Analytical Results For:**

BBC International, Inc.  
Cliff Brunson  
P.O. Box 805  
Hobbs NM, 88241  
Fax To: (575) 397-0397

Received: 06/06/2017  
Reported: 06/12/2017  
Project Name: SMOKEY BITS CTB  
Project Number: NOT GIVEN  
Project Location: EDDY COUNTY, NM

Sampling Date: 05/31/2017  
Sampling Type: Soil  
Sampling Condition: Cool & Intact  
Sample Received By: Tamara Oldaker

**Sample ID: SP7 @ 16' (H701489-31)**

BTEx 8021B		mg/kg		Analyzed By: MS					
Analyte	Result	Reporting Limit	Analyzed	Method Blank	BS	% Recovery	True Value QC	RPD	Qualifier
Benzene*	<0.050	0.050	06/09/2017	ND	1.90	94.9	2.00	1.95	
Toluene*	<0.050	0.050	06/09/2017	ND	1.88	94.2	2.00	2.10	
Ethylbenzene*	<0.050	0.050	06/09/2017	ND	2.03	102	2.00	2.41	
Total Xylenes*	<0.150	0.150	06/09/2017	ND	5.50	91.7	6.00	2.50	
Total BTEx	<0.300	0.300	06/09/2017	ND					

Surrogate: 4-Bromofluorobenzene (PID) 108 % 72-148

Chloride, SM4500CI-B		mg/kg		Analyzed By: AC					
Analyte	Result	Reporting Limit	Analyzed	Method Blank	BS	% Recovery	True Value QC	RPD	Qualifier
Chloride	48.0	16.0	06/07/2017	ND	464	116	400	14.8	

TPH 8015M		mg/kg		Analyzed By: MS					
Analyte	Result	Reporting Limit	Analyzed	Method Blank	BS	% Recovery	True Value QC	RPD	Qualifier
GRO C6-C10	<10.0	10.0	06/09/2017	ND	193	96.3	200	0.0364	
DRO >C10-C28	244	10.0	06/09/2017	ND	196	98.1	200	2.01	

Surrogate: 1-Chlorooctane 89.4 % 28.3-164

Surrogate: 1-Chlorooctadecane 76.1 % 34.7-157

Cardinal Laboratories

\*=Accredited Analyte

PLEASE NOTE: Liability and Damages. Cardinal's liability and client's exclusive remedy for any claim arising, whether based in contract or tort, shall be limited to the amount paid by client for analyses. All claims, including those for negligence and any other cause whatsoever shall be deemed waived unless made in writing and received by Cardinal within thirty (30) days after completion of the applicable service. In no event shall Cardinal be liable for incidental or consequential damages, including, without limitation, business interruptions, loss of use, or loss of profits incurred by client, its subsidiaries, affiliates or successors arising out of or related to the performance of the services hereunder by Cardinal, regardless of whether such claim is based upon any of the above stated reasons or otherwise. Results relate only to the samples identified above. This report shall not be reproduced except in full with written approval of Cardinal Laboratories.



Celey D. Keene, Lab Director/Quality Manager

**Analytical Results For:**

BBC International, Inc.  
Cliff Brunson  
P.O. Box 805  
Hobbs NM, 88241  
Fax To: (575) 397-0397

Received: 06/06/2017  
Reported: 06/12/2017  
Project Name: SMOKEY BITS CTB  
Project Number: NOT GIVEN  
Project Location: EDDY COUNTY, NM

Sampling Date: 05/31/2017  
Sampling Type: Soil  
Sampling Condition: Cool & Intact  
Sample Received By: Tamara Oldaker

**Sample ID: SP8 @ SURFACE (H701489-32)**

BTX 8021B		mg/kg		Analyzed By: MS				S-04	
Analyte	Result	Reporting Limit	Analyzed	Method Blank	BS	% Recovery	True Value QC	RPD	Qualifier
<b>Benzene*</b>	<b>0.198</b>	0.050	06/09/2017	ND	1.90	94.9	2.00	1.95	
<b>Toluene*</b>	<b>4.35</b>	0.050	06/09/2017	ND	1.88	94.2	2.00	2.10	
<b>Ethylbenzene*</b>	<b>6.74</b>	0.050	06/09/2017	ND	2.03	102	2.00	2.41	
<b>Total Xylenes*</b>	<b>16.1</b>	0.150	06/09/2017	ND	5.50	91.7	6.00	2.50	
<b>Total BTX</b>	<b>27.3</b>	0.300	06/09/2017	ND					

Surrogate: 4-Bromofluorobenzene (PID) 156 % 72-148

Chloride, SM4500CI-B		mg/kg		Analyzed By: AC					
Analyte	Result	Reporting Limit	Analyzed	Method Blank	BS	% Recovery	True Value QC	RPD	Qualifier
<b>Chloride</b>	<b>32.0</b>	16.0	06/07/2017	ND	464	116	400	14.8	

TPH 8015M		mg/kg		Analyzed By: MS				S-06	
Analyte	Result	Reporting Limit	Analyzed	Method Blank	BS	% Recovery	True Value QC	RPD	Qualifier
<b>GRO C6-C10</b>	<b>328</b>	50.0	06/09/2017	ND	193	96.3	200	0.0364	
<b>DRO &gt;C10-C28</b>	<b>4830</b>	50.0	06/09/2017	ND	196	98.1	200	2.01	

Surrogate: 1-Chlorooctane 124 % 28.3-164

Surrogate: 1-Chlorooctadecane 183 % 34.7-157

Cardinal Laboratories

\*=Accredited Analyte

PLEASE NOTE: Liability and Damages. Cardinal's liability and client's exclusive remedy for any claim arising, whether based in contract or tort, shall be limited to the amount paid by client for analyses. All claims, including those for negligence and any other cause whatsoever shall be deemed waived unless made in writing and received by Cardinal within thirty (30) days after completion of the applicable service. In no event shall Cardinal be liable for incidental or consequential damages, including, without limitation, business interruptions, loss of use, or loss of profits incurred by client, its subsidiaries, affiliates or successors arising out of or related to the performance of the services hereunder by Cardinal, regardless of whether such claim is based upon any of the above stated reasons or otherwise. Results relate only to the samples identified above. This report shall not be reproduced except in full with written approval of Cardinal Laboratories.



Celey D. Keene, Lab Director/Quality Manager

**Analytical Results For:**

BBC International, Inc.  
Cliff Brunson  
P.O. Box 805  
Hobbs NM, 88241  
Fax To: (575) 397-0397

Received: 06/06/2017  
Reported: 06/12/2017  
Project Name: SMOKEY BITS CTB  
Project Number: NOT GIVEN  
Project Location: EDDY COUNTY, NM

Sampling Date: 05/31/2017  
Sampling Type: Soil  
Sampling Condition: Cool & Intact  
Sample Received By: Tamara Oldaker

**Sample ID: SP8 @ 6" (H701489-33)**

BTX 8021B		mg/kg		Analyzed By: MS					
Analyte	Result	Reporting Limit	Analyzed	Method Blank	BS	% Recovery	True Value QC	RPD	Qualifier
Benzene*	<0.050	0.050	06/09/2017	ND	1.90	94.9	2.00	1.95	
Toluene*	0.130	0.050	06/09/2017	ND	1.88	94.2	2.00	2.10	
Ethylbenzene*	0.258	0.050	06/09/2017	ND	2.03	102	2.00	2.41	
Total Xylenes*	0.817	0.150	06/09/2017	ND	5.50	91.7	6.00	2.50	
Total BTX	1.20	0.300	06/09/2017	ND					

Surrogate: 4-Bromofluorobenzene (PID) 108 % 72-148

Chloride, SM4500CI-B		mg/kg		Analyzed By: AC						
Analyte	Result	Reporting Limit	Analyzed	Method Blank	BS	% Recovery	True Value QC	RPD	Qualifier	
Chloride	48.0	16.0	06/07/2017	ND	464	116	400	14.8		

TPH 8015M		mg/kg		Analyzed By: MS					
Analyte	Result	Reporting Limit	Analyzed	Method Blank	BS	% Recovery	True Value QC	RPD	Qualifier
GRO C6-C10	13.6	10.0	06/09/2017	ND	193	96.3	200	0.0364	
DRO >C10-C28	397	10.0	06/09/2017	ND	196	98.1	200	2.01	

Surrogate: 1-Chlorooctane 90.4 % 28.3-164

Surrogate: 1-Chlorooctadecane 79.8 % 34.7-157

Cardinal Laboratories

\*=Accredited Analyte

PLEASE NOTE: Liability and Damages. Cardinal's liability and client's exclusive remedy for any claim arising, whether based in contract or tort, shall be limited to the amount paid by client for analyses. All claims, including those for negligence and any other cause whatsoever shall be deemed waived unless made in writing and received by Cardinal within thirty (30) days after completion of the applicable service. In no event shall Cardinal be liable for incidental or consequential damages, including, without limitation, business interruptions, loss of use, or loss of profits incurred by client, its subsidiaries, affiliates or successors arising out of or related to the performance of the services hereunder by Cardinal, regardless of whether such claim is based upon any of the above stated reasons or otherwise. Results relate only to the samples identified above. This report shall not be reproduced except in full with written approval of Cardinal Laboratories.



Celey D. Keene, Lab Director/Quality Manager

**Analytical Results For:**

BBC International, Inc.  
Cliff Brunson  
P.O. Box 805  
Hobbs NM, 88241  
Fax To: (575) 397-0397

Received: 06/06/2017  
Reported: 06/12/2017  
Project Name: SMOKEY BITS CTB  
Project Number: NOT GIVEN  
Project Location: EDDY COUNTY, NM

Sampling Date: 05/31/2017  
Sampling Type: Soil  
Sampling Condition: Cool & Intact  
Sample Received By: Tamara Oldaker

**Sample ID: SP8 @ 1' (H701489-34)**

BTX 8021B		mg/kg		Analyzed By: MS					
Analyte	Result	Reporting Limit	Analyzed	Method Blank	BS	% Recovery	True Value QC	RPD	Qualifier
Benzene*	<0.050	0.050	06/09/2017	ND	1.90	94.9	2.00	1.95	
Toluene*	0.063	0.050	06/09/2017	ND	1.88	94.2	2.00	2.10	
Ethylbenzene*	0.082	0.050	06/09/2017	ND	2.03	102	2.00	2.41	
Total Xylenes*	0.302	0.150	06/09/2017	ND	5.50	91.7	6.00	2.50	
Total BTX	0.447	0.300	06/09/2017	ND					

Surrogate: 4-Bromofluorobenzene (PID) 104 % 72-148

Chloride, SM4500CI-B		mg/kg		Analyzed By: AC						
Analyte	Result	Reporting Limit	Analyzed	Method Blank	BS	% Recovery	True Value QC	RPD	Qualifier	
Chloride	32.0	16.0	06/07/2017	ND	464	116	400	14.8		

TPH 8015M		mg/kg		Analyzed By: MS					
Analyte	Result	Reporting Limit	Analyzed	Method Blank	BS	% Recovery	True Value QC	RPD	Qualifier
GRO C6-C10	<10.0	10.0	06/09/2017	ND	193	96.3	200	0.0364	
DRO >C10-C28	114	10.0	06/09/2017	ND	196	98.1	200	2.01	

Surrogate: 1-Chlorooctane 95.8 % 28.3-164

Surrogate: 1-Chlorooctadecane 85.2 % 34.7-157

Cardinal Laboratories

\*=Accredited Analyte

PLEASE NOTE: Liability and Damages. Cardinal's liability and client's exclusive remedy for any claim arising, whether based in contract or tort, shall be limited to the amount paid by client for analyses. All claims, including those for negligence and any other cause whatsoever shall be deemed waived unless made in writing and received by Cardinal within thirty (30) days after completion of the applicable service. In no event shall Cardinal be liable for incidental or consequential damages, including, without limitation, business interruptions, loss of use, or loss of profits incurred by client, its subsidiaries, affiliates or successors arising out of or related to the performance of the services hereunder by Cardinal, regardless of whether such claim is based upon any of the above stated reasons or otherwise. Results relate only to the samples identified above. This report shall not be reproduced except in full with written approval of Cardinal Laboratories.



Celey D. Keene, Lab Director/Quality Manager

**Analytical Results For:**

 BBC International, Inc.  
 Cliff Brunson  
 P.O. Box 805  
 Hobbs NM, 88241  
 Fax To: (575) 397-0397

 Received: 06/06/2017  
 Reported: 06/12/2017  
 Project Name: SMOKEY BITS CTB  
 Project Number: NOT GIVEN  
 Project Location: EDDY COUNTY, NM

 Sampling Date: 05/31/2017  
 Sampling Type: Soil  
 Sampling Condition: Cool & Intact  
 Sample Received By: Tamara Oldaker

**Sample ID: SP9 @ SURFACE (H701489-35)**

BTEx 8021B		mg/kg		Analyzed By: MS					
Analyte	Result	Reporting Limit	Analyzed	Method Blank	BS	% Recovery	True Value QC	RPD	Qualifier
Benzene*	0.168	0.050	06/09/2017	ND	1.90	94.9	2.00	1.95	
Toluene*	3.48	0.050	06/09/2017	ND	1.88	94.2	2.00	2.10	
Ethylbenzene*	4.95	0.050	06/09/2017	ND	2.03	102	2.00	2.41	
Total Xylenes*	12.4	0.150	06/09/2017	ND	5.50	91.7	6.00	2.50	
Total BTEX	21.0	0.300	06/09/2017	ND					

Surrogate: 4-Bromofluorobenzene (PID) 133 % 72-148

Chloride, SM4500CI-B		mg/kg		Analyzed By: AC						
Analyte	Result	Reporting Limit	Analyzed	Method Blank	BS	% Recovery	True Value QC	RPD	Qualifier	
Chloride	48.0	16.0	06/07/2017	ND	464	116	400	14.8		

TPH 8015M		mg/kg		Analyzed By: MS					S-04	
Analyte	Result	Reporting Limit	Analyzed	Method Blank	BS	% Recovery	True Value QC	RPD	Qualifier	
GRO C6-C10	233	10.0	06/09/2017	ND	193	96.3	200	0.0364		
DRO >C10-C28	3650	10.0	06/09/2017	ND	196	98.1	200	2.01		

Surrogate: 1-Chlorooctane 122 % 28.3-164

Surrogate: 1-Chlorooctadecane 158 % 34.7-157

Cardinal Laboratories

\*=Accredited Analyte

PLEASE NOTE: Liability and Damages. Cardinal's liability and client's exclusive remedy for any claim arising, whether based in contract or tort, shall be limited to the amount paid by client for analyses. All claims, including those for negligence and any other cause whatsoever shall be deemed waived unless made in writing and received by Cardinal within thirty (30) days after completion of the applicable service. In no event shall Cardinal be liable for incidental or consequential damages, including, without limitation, business interruptions, loss of use, or loss of profits incurred by client, its subsidiaries, affiliates or successors arising out of or related to the performance of the services hereunder by Cardinal, regardless of whether such claim is based upon any of the above stated reasons or otherwise. Results relate only to the samples identified above. This report shall not be reproduced except in full with written approval of Cardinal Laboratories.



Celey D. Keene, Lab Director/Quality Manager

**Analytical Results For:**

BBC International, Inc.  
Cliff Brunson  
P.O. Box 805  
Hobbs NM, 88241  
Fax To: (575) 397-0397

Received: 06/06/2017  
Reported: 06/12/2017  
Project Name: SMOKEY BITS CTB  
Project Number: NOT GIVEN  
Project Location: EDDY COUNTY, NM

Sampling Date: 05/31/2017  
Sampling Type: Soil  
Sampling Condition: Cool & Intact  
Sample Received By: Tamara Oldaker

**Sample ID: SP9 @ 6" (H701489-36)**

BTX 8021B		mg/kg		Analyzed By: MS					
Analyte	Result	Reporting Limit	Analyzed	Method Blank	BS	% Recovery	True Value QC	RPD	Qualifier
Benzene*	<0.050	0.050	06/09/2017	ND	1.97	98.7	2.00	0.663	
Toluene*	0.089	0.050	06/09/2017	ND	1.97	98.5	2.00	0.305	
Ethylbenzene*	0.121	0.050	06/09/2017	ND	2.12	106	2.00	0.756	
Total Xylenes*	0.445	0.150	06/09/2017	ND	5.75	95.9	6.00	0.766	
Total BTX	0.656	0.300	06/09/2017	ND					

Surrogate: 4-Bromofluorobenzene (PID) 100 % 72-148

Chloride, SM4500CI-B		mg/kg		Analyzed By: AC						
Analyte	Result	Reporting Limit	Analyzed	Method Blank	BS	% Recovery	True Value QC	RPD	Qualifier	
Chloride	32.0	16.0	06/07/2017	ND	464	116	400	14.8		

TPH 8015M		mg/kg		Analyzed By: MS					
Analyte	Result	Reporting Limit	Analyzed	Method Blank	BS	% Recovery	True Value QC	RPD	Qualifier
GRO C6-C10	<10.0	10.0	06/09/2017	ND	193	96.3	200	0.0364	
DRO >C10-C28	310	10.0	06/09/2017	ND	196	98.1	200	2.01	

Surrogate: 1-Chlorooctane 80.9 % 28.3-164

Surrogate: 1-Chlorooctadecane 79.5 % 34.7-157

Cardinal Laboratories

\*=Accredited Analyte

PLEASE NOTE: Liability and Damages. Cardinal's liability and client's exclusive remedy for any claim arising, whether based in contract or tort, shall be limited to the amount paid by client for analyses. All claims, including those for negligence and any other cause whatsoever shall be deemed waived unless made in writing and received by Cardinal within thirty (30) days after completion of the applicable service. In no event shall Cardinal be liable for incidental or consequential damages, including, without limitation, business interruptions, loss of use, or loss of profits incurred by client, its subsidiaries, affiliates or successors arising out of or related to the performance of the services hereunder by Cardinal, regardless of whether such claim is based upon any of the above stated reasons or otherwise. Results relate only to the samples identified above. This report shall not be reproduced except in full with written approval of Cardinal Laboratories.



Celey D. Keene, Lab Director/Quality Manager

**Analytical Results For:**

BBC International, Inc.  
Cliff Brunson  
P.O. Box 805  
Hobbs NM, 88241  
Fax To: (575) 397-0397

Received: 06/06/2017  
Reported: 06/12/2017  
Project Name: SMOKEY BITS CTB  
Project Number: NOT GIVEN  
Project Location: EDDY COUNTY, NM

Sampling Date: 05/31/2017  
Sampling Type: Soil  
Sampling Condition: Cool & Intact  
Sample Received By: Tamara Oldaker

**Sample ID: SP9 @ 1' (H701489-37)**

BTX 8021B		mg/kg		Analyzed By: MS					
Analyte	Result	Reporting Limit	Analyzed	Method Blank	BS	% Recovery	True Value QC	RPD	Qualifier
Benzene*	<0.050	0.050	06/09/2017	ND	1.97	98.7	2.00	0.663	
Toluene*	<0.050	0.050	06/09/2017	ND	1.97	98.5	2.00	0.305	
Ethylbenzene*	<0.050	0.050	06/09/2017	ND	2.12	106	2.00	0.756	
Total Xylenes*	<0.150	0.150	06/09/2017	ND	5.75	95.9	6.00	0.766	
Total BTX	<0.300	0.300	06/09/2017	ND					

Surrogate: 4-Bromofluorobenzene (PID) 98.3 % 72-148

Chloride, SM4500CI-B		mg/kg		Analyzed By: AC					
Analyte	Result	Reporting Limit	Analyzed	Method Blank	BS	% Recovery	True Value QC	RPD	Qualifier
Chloride	64.0	16.0	06/07/2017	ND	464	116	400	14.8	

TPH 8015M		mg/kg		Analyzed By: MS					
Analyte	Result	Reporting Limit	Analyzed	Method Blank	BS	% Recovery	True Value QC	RPD	Qualifier
GRO C6-C10	<10.0	10.0	06/09/2017	ND	193	96.3	200	0.0364	
DRO >C10-C28	56.3	10.0	06/09/2017	ND	196	98.1	200	2.01	

Surrogate: 1-Chlorooctane 73.4 % 28.3-164

Surrogate: 1-Chlorooctadecane 67.0 % 34.7-157

Cardinal Laboratories

\*=Accredited Analyte

PLEASE NOTE: Liability and Damages. Cardinal's liability and client's exclusive remedy for any claim arising, whether based in contract or tort, shall be limited to the amount paid by client for analyses. All claims, including those for negligence and any other cause whatsoever shall be deemed waived unless made in writing and received by Cardinal within thirty (30) days after completion of the applicable service. In no event shall Cardinal be liable for incidental or consequential damages, including, without limitation, business interruptions, loss of use, or loss of profits incurred by client, its subsidiaries, affiliates or successors arising out of or related to the performance of the services hereunder by Cardinal, regardless of whether such claim is based upon any of the above stated reasons or otherwise. Results relate only to the samples identified above. This report shall not be reproduced except in full with written approval of Cardinal Laboratories.



Celey D. Keene, Lab Director/Quality Manager



**Analytical Results For:**

BBC International, Inc.  
Cliff Brunson  
P.O. Box 805  
Hobbs NM, 88241  
Fax To: (575) 397-0397

Received: 06/06/2017  
Reported: 06/12/2017  
Project Name: SMOKEY BITS CTB  
Project Number: NOT GIVEN  
Project Location: EDDY COUNTY, NM

Sampling Date: 05/31/2017  
Sampling Type: Soil  
Sampling Condition: Cool & Intact  
Sample Received By: Tamara Oldaker

**Sample ID: NORTH @ SURFACE (H701489-38)**

BTX 8021B		mg/kg		Analyzed By: MS					
Analyte	Result	Reporting Limit	Analyzed	Method Blank	BS	% Recovery	True Value QC	RPD	Qualifier
Benzene*	<0.050	0.050	06/09/2017	ND	1.97	98.7	2.00	0.663	
Toluene*	1.29	0.050	06/09/2017	ND	1.97	98.5	2.00	0.305	
Ethylbenzene*	1.94	0.050	06/09/2017	ND	2.12	106	2.00	0.756	
Total Xylenes*	4.39	0.150	06/09/2017	ND	5.75	95.9	6.00	0.766	
Total BTX	7.62	0.300	06/09/2017	ND					

Surrogate: 4-Bromofluorobenzene (PID) 104 % 72-148

Chloride, SM4500CI-B		mg/kg		Analyzed By: AC					
Analyte	Result	Reporting Limit	Analyzed	Method Blank	BS	% Recovery	True Value QC	RPD	Qualifier
Chloride	96.0	16.0	06/07/2017	ND	464	116	400	14.8	

TPH 8015M		mg/kg		Analyzed By: MS					
Analyte	Result	Reporting Limit	Analyzed	Method Blank	BS	% Recovery	True Value QC	RPD	Qualifier
GRO C6-C10	68.4	10.0	06/09/2017	ND	218	109	200	5.54	
DRO >C10-C28	115	10.0	06/09/2017	ND	237	119	200	6.66	

Surrogate: 1-Chlorooctane 92.9 % 28.3-164

Surrogate: 1-Chlorooctadecane 89.8 % 34.7-157

Cardinal Laboratories

\*=Accredited Analyte

PLEASE NOTE: Liability and Damages. Cardinal's liability and client's exclusive remedy for any claim arising, whether based in contract or tort, shall be limited to the amount paid by client for analyses. All claims, including those for negligence and any other cause whatsoever shall be deemed waived unless made in writing and received by Cardinal within thirty (30) days after completion of the applicable service. In no event shall Cardinal be liable for incidental or consequential damages, including, without limitation, business interruptions, loss of use, or loss of profits incurred by client, its subsidiaries, affiliates or successors arising out of or related to the performance of the services hereunder by Cardinal, regardless of whether such claim is based upon any of the above stated reasons or otherwise. Results relate only to the samples identified above. This report shall not be reproduced except in full with written approval of Cardinal Laboratories.



Celey D. Keene, Lab Director/Quality Manager

**Analytical Results For:**

BBC International, Inc.  
Cliff Brunson  
P.O. Box 805  
Hobbs NM, 88241  
Fax To: (575) 397-0397

Received: 06/06/2017  
Reported: 06/12/2017  
Project Name: SMOKEY BITS CTB  
Project Number: NOT GIVEN  
Project Location: EDDY COUNTY, NM

Sampling Date: 05/31/2017  
Sampling Type: Soil  
Sampling Condition: Cool & Intact  
Sample Received By: Tamara Oldaker

**Sample ID: EAST@ SURFACE (H701489-39)**

BTX 8021B		mg/kg		Analyzed By: MS					
Analyte	Result	Reporting Limit	Analyzed	Method Blank	BS	% Recovery	True Value QC	RPD	Qualifier
Benzene*	<0.050	0.050	06/09/2017	ND	1.97	98.7	2.00	0.663	
<b>Toluene*</b>	<b>1.19</b>	0.050	06/09/2017	ND	1.97	98.5	2.00	0.305	
<b>Ethylbenzene*</b>	<b>1.78</b>	0.050	06/09/2017	ND	2.12	106	2.00	0.756	
<b>Total Xylenes*</b>	<b>4.04</b>	0.150	06/09/2017	ND	5.75	95.9	6.00	0.766	
<b>Total BTX</b>	<b>7.02</b>	0.300	06/09/2017	ND					

Surrogate: 4-Bromofluorobenzene (PID) 103 % 72-148

Chloride, SM4500CI-B		mg/kg		Analyzed By: AC					
Analyte	Result	Reporting Limit	Analyzed	Method Blank	BS	% Recovery	True Value QC	RPD	Qualifier
<b>Chloride</b>	<b>80.0</b>	16.0	06/07/2017	ND	464	116	400	14.8	

TPH 8015M		mg/kg		Analyzed By: MS					
Analyte	Result	Reporting Limit	Analyzed	Method Blank	BS	% Recovery	True Value QC	RPD	Qualifier
<b>GRO C6-C10</b>	<b>46.8</b>	10.0	06/09/2017	ND	218	109	200	5.54	
<b>DRO &gt;C10-C28</b>	<b>168</b>	10.0	06/09/2017	ND	237	119	200	6.66	

Surrogate: 1-Chlorooctane 83.7 % 28.3-164

Surrogate: 1-Chlorooctadecane 77.3 % 34.7-157

Cardinal Laboratories

\*=Accredited Analyte

PLEASE NOTE: Liability and Damages. Cardinal's liability and client's exclusive remedy for any claim arising, whether based in contract or tort, shall be limited to the amount paid by client for analyses. All claims, including those for negligence and any other cause whatsoever shall be deemed waived unless made in writing and received by Cardinal within thirty (30) days after completion of the applicable service. In no event shall Cardinal be liable for incidental or consequential damages, including, without limitation, business interruptions, loss of use, or loss of profits incurred by client, its subsidiaries, affiliates or successors arising out of or related to the performance of the services hereunder by Cardinal, regardless of whether such claim is based upon any of the above stated reasons or otherwise. Results relate only to the samples identified above. This report shall not be reproduced except in full with written approval of Cardinal Laboratories.



Celey D. Keene, Lab Director/Quality Manager

**Analytical Results For:**

BBC International, Inc.  
Cliff Brunson  
P.O. Box 805  
Hobbs NM, 88241  
Fax To: (575) 397-0397

Received: 06/06/2017  
Reported: 06/12/2017  
Project Name: SMOKEY BITS CTB  
Project Number: NOT GIVEN  
Project Location: EDDY COUNTY, NM

Sampling Date: 05/31/2017  
Sampling Type: Soil  
Sampling Condition: Cool & Intact  
Sample Received By: Tamara Oldaker

**Sample ID: WEST@ SURFACE (H701489-40)**

BTEx 8021B		mg/kg		Analyzed By: MS					
Analyte	Result	Reporting Limit	Analyzed	Method Blank	BS	% Recovery	True Value QC	RPD	Qualifier
Benzene*	<0.050	0.050	06/09/2017	ND	1.97	98.7	2.00	0.663	
Toluene*	1.11	0.050	06/09/2017	ND	1.97	98.5	2.00	0.305	
Ethylbenzene*	1.79	0.050	06/09/2017	ND	2.12	106	2.00	0.756	
Total Xylenes*	4.11	0.150	06/09/2017	ND	5.75	95.9	6.00	0.766	
Total BTEx	7.02	0.300	06/09/2017	ND					

Surrogate: 4-Bromofluorobenzene (PID) 105 % 72-148

Chloride, SM4500CI-B		mg/kg		Analyzed By: AC						
Analyte	Result	Reporting Limit	Analyzed	Method Blank	BS	% Recovery	True Value QC	RPD	Qualifier	
Chloride	80.0	16.0	06/07/2017	ND	464	116	400	14.8		

TPH 8015M		mg/kg		Analyzed By: MS					
Analyte	Result	Reporting Limit	Analyzed	Method Blank	BS	% Recovery	True Value QC	RPD	Qualifier
GRO C6-C10	58.4	10.0	06/09/2017	ND	218	109	200	5.54	
DRO >C10-C28	131	10.0	06/09/2017	ND	237	119	200	6.66	

Surrogate: 1-Chlorooctane 93.1 % 28.3-164

Surrogate: 1-Chlorooctadecane 88.2 % 34.7-157

Cardinal Laboratories

\*=Accredited Analyte

PLEASE NOTE: Liability and Damages. Cardinal's liability and client's exclusive remedy for any claim arising, whether based in contract or tort, shall be limited to the amount paid by client for analyses. All claims, including those for negligence and any other cause whatsoever shall be deemed waived unless made in writing and received by Cardinal within thirty (30) days after completion of the applicable service. In no event shall Cardinal be liable for incidental or consequential damages, including, without limitation, business interruptions, loss of use, or loss of profits incurred by client, its subsidiaries, affiliates or successors arising out of or related to the performance of the services hereunder by Cardinal, regardless of whether such claim is based upon any of the above stated reasons or otherwise. Results relate only to the samples identified above. This report shall not be reproduced except in full with written approval of Cardinal Laboratories.



Celey D. Keene, Lab Director/Quality Manager

**Analytical Results For:**

BBC International, Inc.  
Cliff Brunson  
P.O. Box 805  
Hobbs NM, 88241  
Fax To: (575) 397-0397

Received: 06/06/2017  
Reported: 06/12/2017  
Project Name: SMOKEY BITS CTB  
Project Number: NOT GIVEN  
Project Location: EDDY COUNTY, NM

Sampling Date: 05/31/2017  
Sampling Type: Soil  
Sampling Condition: Cool & Intact  
Sample Received By: Tamara Oldaker

**Sample ID: SOUTH @ SURFACE (H701489-41)**

BTX 8021B		mg/kg		Analyzed By: MS					
Analyte	Result	Reporting Limit	Analyzed	Method Blank	BS	% Recovery	True Value QC	RPD	Qualifier
Benzene*	<0.050	0.050	06/09/2017	ND	1.97	98.7	2.00	0.663	
Toluene*	1.00	0.050	06/09/2017	ND	1.97	98.5	2.00	0.305	
Ethylbenzene*	2.27	0.050	06/09/2017	ND	2.12	106	2.00	0.756	
Total Xylenes*	5.50	0.150	06/09/2017	ND	5.75	95.9	6.00	0.766	
Total BTX	8.78	0.300	06/09/2017	ND					

Surrogate: 4-Bromofluorobenzene (PID) 107 % 72-148

Chloride, SM4500CI-B		mg/kg		Analyzed By: AC						
Analyte	Result	Reporting Limit	Analyzed	Method Blank	BS	% Recovery	True Value QC	RPD	Qualifier	
Chloride	80.0	16.0	06/07/2017	ND	464	116	400	14.8		

TPH 8015M		mg/kg		Analyzed By: MS					
Analyte	Result	Reporting Limit	Analyzed	Method Blank	BS	% Recovery	True Value QC	RPD	Qualifier
GRO C6-C10	69.1	10.0	06/09/2017	ND	218	109	200	5.54	
DRO >C10-C28	227	10.0	06/09/2017	ND	237	119	200	6.66	

Surrogate: 1-Chlorooctane 88.7 % 28.3-164

Surrogate: 1-Chlorooctadecane 76.1 % 34.7-157

Cardinal Laboratories

\*=Accredited Analyte

PLEASE NOTE: Liability and Damages. Cardinal's liability and client's exclusive remedy for any claim arising, whether based in contract or tort, shall be limited to the amount paid by client for analyses. All claims, including those for negligence and any other cause whatsoever shall be deemed waived unless made in writing and received by Cardinal within thirty (30) days after completion of the applicable service. In no event shall Cardinal be liable for incidental or consequential damages, including, without limitation, business interruptions, loss of use, or loss of profits incurred by client, its subsidiaries, affiliates or successors arising out of or related to the performance of the services hereunder by Cardinal, regardless of whether such claim is based upon any of the above stated reasons or otherwise. Results relate only to the samples identified above. This report shall not be reproduced except in full with written approval of Cardinal Laboratories.



Celey D. Keene, Lab Director/Quality Manager

### Notes and Definitions

S-06	The recovery of this surrogate is outside control limits due to sample dilution required from high analyte concentration and/or matrix interference's.
S-04	The surrogate recovery for this sample is outside of established control limits due to a sample matrix effect.
ND	Analyte NOT DETECTED at or above the reporting limit
RPD	Relative Percent Difference
**	Samples not received at proper temperature of 6°C or below.
***	Insufficient time to reach temperature.
-	Chloride by SM4500Cl-B does not require samples be received at or below 6°C Samples reported on an as received basis (wet) unless otherwise noted on report



---

Celey D. Keene, Lab Director/Quality Manager



101 East Marland, Hobbs, NM 88240  
(505) 393-2326 FAX (505) 393-2476

### CHAIN-OF-CUSTODY AND ANALYSIS REQUEST

Phone Result:	<input type="checkbox"/> Yes	<input type="checkbox"/> No	Add'l Phone #
Fax Result:	<input type="checkbox"/> Yes	<input type="checkbox"/> No	Add'l Fax #:
REMARKS:			

† Cardinal cannot accept verbal changes. Please fax written changes to 505-393-2416





# CARDINAL LABORATORIES

101 East Marland, Hobbs, NM 88240  
(505) 393-2326 FAX (505) 393-2476

## CHAIN-OF-CUSTODY AND ANALYSIS REQUEST

Company Name: BBC International, Inc.		<b>BILL TO</b>		ANALYSIS REQUEST																							
Project Manager: Cliff Brunson		P.O. #:																									
Address: P.O. Box 805		Company: Oxy																									
City: Hobbs		Attn: Casby																									
State: NM Zip: 88241		Address:																									
Phone #: 575-397-6388 Fax #: 575-397-0397		City:																									
Project #: Project Owner: Oxy		State: Zip:																									
Project Name: SMOKEY BITS CTB		Phone #:																									
Project Location: Eddy County, NM		Fax #:																									
Sampler Name: Roger Hernandez																											
FOR LAB USE ONLY																											
Lab I.D.		Sample I.D.																									
H161489-																											
11 SP3 @ 5'		(G)RAB OR (C)OMP.		# CONTAINERS		MATRIX						PRESERV.		SAMPLING				DATE		TIME		KTEX		CI		TPH	
12 SP3 @ 10'		1		1		GROUNDWATER						✓		5/30/17		3:52 PM		✓		✓							
13 SP3 @ 15'		1		1		WASTEWATER						✓		5/30/17		4:00 PM		✓		✓							
14 SP4 @ 1'		1		1		SOIL						✓		5/30/17		4:20 PM		✓		✓							
15 SP4 @ 2'		1		1		OIL						✓		5/31/17		8:35 AM		✓		✓							
16 SP4 @ 7'		1		1		SLUDGE						✓		5/31/17		8:43 AM		✓		✓							
17 SP4 @ 12'		1		1		OTHER :						✓		5/31/17		8:57 AM		✓		✓							
18 SP5 @ 1'		1		1		ACID/BASE:						✓		5/31/17		9:20 AM		✓		✓							
19 SP5 @ 2'		1		1		ICE / COOL						✓		5/31/17		10:08 AM		✓		✓							
20 SP5 @ 7'		1		1		OTHER :						✓		5/31/17		10:20 AM		✓		✓							
		6		1								✓		5/31/17		10:35 AM		✓		✓							
PLEASE NOTE: Liability and Damages: Cardinal's liability and client's exclusive remedy for any claim arising whether based in contract or tort, shall be limited to the amount paid by the client for the analysis. All claims, including those for negligence and any other cause whatsoever shall be deemed waived unless made in writing and received by Cardinal within 30 days after completion of the applicable service. In no event shall Cardinal be liable for incidental or consequential damages, including without limitation, business interruptions, loss of use, or loss of profits incurred by client, its subsidiaries, affiliates or successors arising out of or related to the performance of services hereunder by Cardinal, regardless of whether such claim is based upon any of the above stated reasons or otherwise.																											
Relinquished By: [Signature]		Date: 5/31/17		Time: 3:30 PM		Received By: [Signature]		Date: 5/31/17		Time: 3:50 PM		Sample Condition: Cool <input checked="" type="checkbox"/> Intact <input checked="" type="checkbox"/>		CHECKED BY: [Signature]		REMARKS:		Phone Result: <input type="checkbox"/> Yes <input type="checkbox"/> No		Add'l Phone #:		Fax Result: <input type="checkbox"/> Yes <input type="checkbox"/> No		Add'l Fax #:			
Delivered By: (Circle One) [Signature]		Time: 3:50 PM		Received By: [Signature]		Date: 5/31/17		Time: 3:50 PM		Sample Condition: Cool <input checked="" type="checkbox"/> Intact <input checked="" type="checkbox"/>		CHECKED BY: [Signature]		REMARKS:		Phone Result: <input type="checkbox"/> Yes <input type="checkbox"/> No		Add'l Phone #:		Fax Result: <input type="checkbox"/> Yes <input type="checkbox"/> No		Add'l Fax #:					
Sampler - UPS - Bus - Other: #75 0.2°C		Time: 3:50 PM		Received By: [Signature]		Date: 5/31/17		Time: 3:50 PM		Sample Condition: Cool <input checked="" type="checkbox"/> Intact <input checked="" type="checkbox"/>		CHECKED BY: [Signature]		REMARKS:		Phone Result: <input type="checkbox"/> Yes <input type="checkbox"/> No		Add'l Phone #:		Fax Result: <input type="checkbox"/> Yes <input type="checkbox"/> No		Add'l Fax #:					



101 East Marland, Hobbs, NM 88240  
(505) 393-2326 FAX (505) 393-2476

## CHAIN-OF-CUSTODY AND ANALYSIS REQUEST

30x5

**† Cardinal cannot accept verbal changes. Please fax written changes to 505-393-2476**





# ARDINAL LABORATORIES

101 East Marland, Hobbs, NM 88240  
(505) 393-2326 FAX (505) 393-2476

## CHAIN-OF-CUSTODY AND ANALYSIS REQUEST

Company Name: BBC International, Inc.		<b>BILL TO</b>		ANALYSIS REQUEST															
Project Manager: Cliff Brunson		P.O. #:																	
Address: P.O. Box 805		Company: <i>OK</i>																	
City: Hobbs		Attn: <i>CASBY</i>																	
State: NM Zip: 88241		Address:																	
Phone #: 575-397-6388 Fax #: 575-397-0397		City:																	
Project #:		State:																	
Project Name: SMOKEY BITS CTB		Zip:																	
Project Location: Eddy County, NM		Phone #:																	
Fax #:		Fax #:																	
Sampler Name: Roger Hernandez		PRESERV		SAMPLING															
FOR LAB USE ONLY																			
Lab I.D.		Sample I.D.																	
H01489-		(G)RAB OR (C)OMP.		# CONTAINERS															
31 SP7 @ 16'		GROUNDWATER		WASTEWATER															
32 SP8 @ SURFACE		SOIL		OIL															
33 SP8 @ 6"		SLUDGE		OTHER :															
34 SP8 @ 1'		ACID/BASE:		ICE / COOL															
35 SP9 @ SURFACE		OTHER :		DATE		TIME													
36 SP9 @ 6"		5/31/17		1:32 PM		✓		BTEX		CI		TPH							
37 SP9 @ 1'		5/31/17		1:46 PM		✓													
38 NORTH @ SURFACE		5/31/17		1:51 PM		✓													
39 EAST @ SURFACE		5/31/17		2:01 PM		✓													
40 WEST @ SURFACE		5/31/17		2:08 PM		✓													
		5/31/17		2:11 PM		✓													
		5/31/17		2:22 PM		✓													
		5/31/17		2:38 PM		✓													
		5/31/17		3:00 PM		✓													
		5/31/17		3:10 PM		✓													

PLEASE NOTE: Liability and Damages. Cardinal's liability and client's exclusions remain for any claim arising whether based in contract or tort, shall be limited to the amount paid by the client for the analyses. All claims, including those for negligence and any other cause whatsoever shall be deemed waived unless made in writing and received by Cardinal within 30 days after completion of the applicable service. In no event shall Cardinal be liable for incidental or consequential damages, including without limitation, business interruptions, loss of use, or loss of profits incurred by client, its subsidiaries, affiliates or successors arising out of or related to the performance of services hereunder by Cardinal regardless of whether such claim is based upon any of the above stated reasons or otherwise.

Relinquished By: <i>Roger Hernandez</i>	Date: <i>5/31/17</i>	Time: <i>3:30 PM</i>	Received By: <i>Roger Hernandez</i>	Date: <i>5/31/17</i>	Time: <i>3:50 PM</i>
Delivered By: <i>Roger Hernandez</i>	Sample Condition: <input checked="" type="checkbox"/> Cool <input checked="" type="checkbox"/> Intact <input checked="" type="checkbox"/> Yes <input checked="" type="checkbox"/> No		CHECKED BY: <i>V.N.</i>		
Sampler - UPS - Bus - Other: <i>475 022c</i>					

† Cardinal cannot accept verbal changes. Please fax written changes to 505-393-2476

## ORDINAL LABORATORIES

101 East Marland, Hobbs, NM 88240  
(505) 393-2326 FAX (505) 393-2476

### CHAIN-OF-CUSTODY AND ANALYSIS REQUEST

[illegible]



District I  
1625 N. French Dr., Hobbs, NM 88240  
District II  
811 S. First St., Artesia, NM 88210  
District III  
1000 Rio Brazos Road, Aztec, NM 87410  
District IV  
1220 S. St. Francis Dr., Santa Fe, NM 87505

State of New Mexico  
Energy Minerals and Natural Resources  
Oil Conservation Division  
1220 South St. Francis Dr.  
Santa Fe, NM 87505

Form C-141  
Revised April 3, 2017

Submit 1 Copy to appropriate District Office in  
accordance with 19.15.29 NMAC.

### Release Notification and Corrective Action

#### OPERATOR

☒ Initial Report ☐ Final Report

Name of Company	OXY USA WTP LP	Contact	CASEY L SUMMERS
Address	PO BOX 4294; HOUSTON, TX 77210	Telephone No.	575-513-8289
Facility Name	SMOKEY BITS CTB	Facility Type	CENTRAL TANK BATTERY
Surface Owner	STATE	Mineral Owner	STATE
		API No.	30-015-39118

#### LOCATION OF RELEASE

Unit Letter	Section	Township	Range	Feet from the	North/South Line	Feet from the	East/West Line	County
L	36	18S	30E	1750	SOUTH	330	WEST	EDDY

Latitude\_32.7015076\_ Longitude\_-103.9330444\_ NAD83

#### NATURE OF RELEASE

Type of Release	OIL	Volume of Release	10 bbls	Volume Recovered	8 bbls
Source of Release	LINE	Date and Hour of Occurrence	4-18-2017	Date and Hour of Discovery	4-19-2017
Was Immediate Notice Given?	<input checked="" type="checkbox"/> Yes <input type="checkbox"/> No <input type="checkbox"/> Not Required	If YES, To Whom?	MIKE BRATCHER-NMOCD; CRYSTAL WEAVER-NMOCD		
By Whom?	CASEY SUMMERS	Date and Hour	4-19-2017 9:43AM		
Was a Watercourse Reached?	<input type="checkbox"/> Yes <input checked="" type="checkbox"/> No	If YES, Volume Impacting the Watercourse.			

If a Watercourse was Impacted, Describe Fully.\*

Describe Cause of Problem and Remedial Action Taken.\*

Spill was caused by fluid venting out through line when the vessel high pressured. 8 bbls was recovered by vacuum truck.

Describe Area Affected and Cleanup Action Taken.\*

The affected area is approximately 40' X 40' on location (measurements are subject to change with future GPS track) . Remediation will be completed in accordance with a remediation plan approved by the NMOCD.

I hereby certify that the information given above is true and complete to the best of my knowledge and understand that pursuant to NMOCD rules and regulations all operators are required to report and/or file certain release notifications and perform corrective actions for releases which may endanger public health or the environment. The acceptance of a C-141 report by the NMOCD marked as "Final Report" does not relieve the operator of liability should their operations have failed to adequately investigate and remediate contamination that pose a threat to ground water, surface water, human health or the environment. In addition, NMOCD acceptance of a C-141 report does not relieve the operator of responsibility for compliance with any other federal, state, or local laws and/or regulations.

Signature:	<u>OIL CONSERVATION DIVISION</u>		
Printed Name: CASEY L SUMMERS	Approved by Environmental Specialist:		
Title: ENVIRONMENTAL ADVISOR	Approval Date:	Expiration Date:	
E-mail Address: casey_summers@oxv.com	Conditions of Approval:		Attached <input type="checkbox"/>
Date: 4-19-17 Phone: 575-513-8289			

\* Attach Additional Sheets If Necessary

District I  
1625 N. French Dr., Hobbs, NM 88240  
District II  
811 S. First St., Artesia, NM 88210  
District III  
1000 Rio Brazos Road, Aztec, NM 87410  
District IV  
1220 S. St. Francis Dr., Santa Fe, NM 87505

State of New Mexico  
Energy Minerals and Natural Resources

Oil Conservation Division  
1220 South St. Francis Dr.  
Santa Fe, NM 87505

Form C-141  
Revised April 3, 2017

Submit 1 Copy to appropriate District Office in  
accordance with 19.15.29 NMAC.

### Release Notification and Corrective Action

#### OPERATOR

☒ Initial Report ☐ Final Report

Name of Company	OXY USA WTP LP	Contact	CASEY L SUMMERS
Address	PO BOX 4294; HOUSTON, TX 77210	Telephone No.	575-513-8289
Facility Name	SMOKEY BITS STATE COM 3H CTB	Facility Type	BATTERY

Surface Owner	STATE	Mineral Owner	STATE	API No.	30-015-39118
---------------	-------	---------------	-------	---------	--------------

#### LOCATION OF RELEASE

Unit Letter	Section	Township	Range	Feet from the	North/South Line	Feet from the	East/West Line	County
L	36	18S	30E	1750	SOUTH	330	WEST	EDDY

Latitude: 32.7015076 Longitude: -103.9330444 NAD83

#### NATURE OF RELEASE

Type of Release	OIL	Volume of Release	10 bbls	Volume Recovered	8 bbls
Source of Release	Fluid vented out through line when vessel high pressured.	Date and Hour of Occurrence	5-16-2017	Date and Hour of Discovery	5-17-2017
Was Immediate Notice Given?	<input checked="" type="checkbox"/> Yes <input type="checkbox"/> No <input type="checkbox"/> Not Required	If YES, To Whom?	MIKE BRATCHER-NMOCD; CRYSTAL WEEAVER-NMOCD; SHELLY TUCKER-BLM; AMBER GROVES-SLO		
By Whom?	CASEY L SUMMERS	Date and Hour	5/17/2017 @ 4:38 PM		
Was a Watercourse Reached?	<input type="checkbox"/> Yes <input checked="" type="checkbox"/> No	If YES, Volume Impacting the Watercourse.			

If a Watercourse was Impacted, Describe Fully.\*

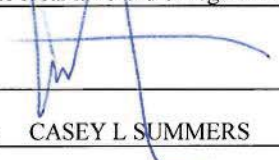
Describe Cause of Problem and Remedial Action Taken.\*

Fluid vented out through line when vessel high pressured. Pressure issue will be corrected through repiping of the facility. 8 bbls were recovered via vacuum truck.

Describe Area Affected and Cleanup Action Taken.\*

Affected area was approximately 50x40 FT (measurements are subject to change with future GPS track). Remediation will be completed in accordance with a remediation plan approved by the NMOCD and SLO.

I hereby certify that the information given above is true and complete to the best of my knowledge and understand that pursuant to NMOCD rules and regulations all operators are required to report and/or file certain release notifications and perform corrective actions for releases which may endanger public health or the environment. The acceptance of a C-141 report by the NMOCD marked as "Final Report" does not relieve the operator of liability should their operations have failed to adequately investigate and remediate contamination that pose a threat to ground water, surface water, human health or the environment. In addition, NMOCD acceptance of a C-141 report does not relieve the operator of responsibility for compliance with any other federal, state, or local laws and/or regulations.

Signature: 		<u>OIL CONSERVATION DIVISION</u>	
Printed Name: CASEY L SUMMERS		Approved by Environmental Specialist:	
Title: ENVIRONMENTAL ADVISOR		Approval Date:	Expiration Date:
E-mail Address: <a href="mailto:casey_summers@oxy.com">casey_summers@oxy.com</a>		Conditions of Approval:	
Date: <u>5-17-17</u> Phone: 575-513-8289		Attached <input type="checkbox"/>	

\* Attach Additional Sheets If Necessary