

Bratcher, Mike, EMNRD

From: Tucker, Shelly <stucker@blm.gov>
Sent: Thursday, March 22, 2018 11:57 AM
To: Raley, Jim
Cc: Bratcher, Mike, EMNRD; Blaney, Karolina
Subject: Re: Ross Draw Unit 14 - Final C-141

RE: Ross Draw Unit 14 ** DOR 02.11.2015

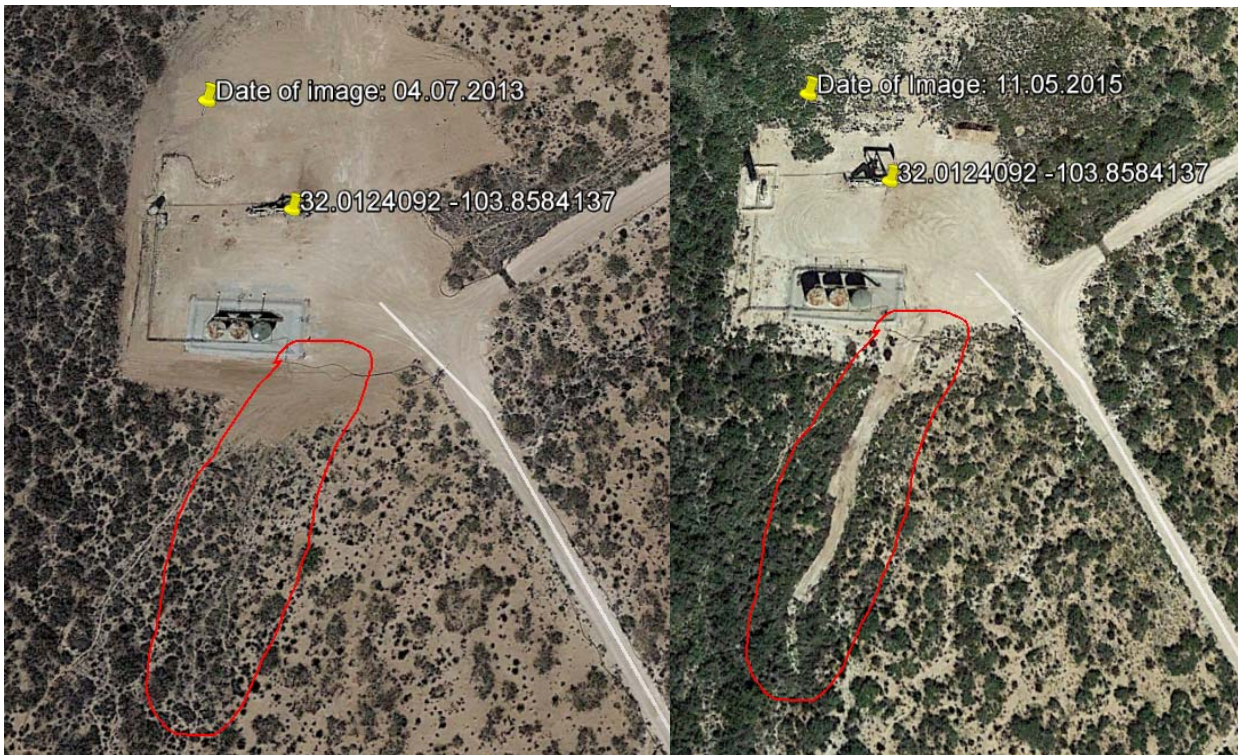
Upon review of the closure report submitted, BLM **denies** the closure based on lack of data and information.

1. Sample BH17-01 - what were the results? I do not see them listed.
2. Sample BH17-02 - you are only showing the results beginning at 4'. Did you remove the top 4'? If not, what are the delineation numbers from surface to 4'?
3. Sample BH17-03 - you are only showing the results beginning at 2'. Did you remove the top 2'? If not, what are the delineation numbers from surface to 2'?
4. Sample BH17-05 - you are only showing the results beginning at 4'. Did you remove the top 4'? If not, what are the delineation numbers from surface to 4'?
5. Sample BH17-06 - you are only showing the results beginning at 4'. Did you remove the top 4'? If not, what are the delineation numbers from surface to 4'?

Looking at the lab report, you only had one sample analyzed for TPH and BTEX and that was BH17-02 at 4'. This release, according to the C-141, was an oil and water mix from the wellhead. Why were the other samples not analyzed to verify the existence or nonexistence of TPH and BTEX?

Also, according to the spill map within your closure, it shows the release was localized from the wellhead towards the facility, but your sample pattern does not support that. Why?

Lastly, looking at Google Earth shows surface disturbance, indicative of a release off site. According to BLM records, no authorization for off-site surface disturbance was authorized, nor were any releases reported to the BLM. Staining from the wellhead to off location is visible... Do you have knowledge of what has occurred?



If you have any questions or concerns, please do not hesitate to contact me.

Sincerely,

Shelly J Tucker

Environmental Protection Specialist
O&G Spill/Release Coordinator

Bureau of Land Management
620 E. Greene St
Carlsbad, NM 88220

575.234.5905 - Direct
575.361.0084 - Cellular
575.234.6235 - Emergency Spill Number

stucker@blm.gov

The **BLM acceptance/approval does not** relieve the operator of liability should their operations have failed to adequately investigate and remediate contamination that may pose a threat to groundwater, surface water, human health or the environment or if the location fails to reclaim properly. In such an event that the location does not revegetate, or future issues with contaminants are encountered, the operator will be asked to address the issues until the contaminant issues are fully mitigated and the location is successfully reclaimed. In addition, BLM approval does not relieve the operator of responsibility for compliance with any other federal, state or local laws/regulations.

Confidentiality Warning: This message along with any attachments are intended only for use of the individual or entity to which it is addressed and may contain information that is privileged or confidential and exempt from disclosure under applicable law. If the reader of this message is not the intended recipient

or the employee or agent responsible for delivering this message to the intended recipient, you are hereby notified that any dissemination, distribution, or copying of this communication is strictly prohibited. If you have received this communication in error, please notify the sender immediately.

On Thu, Jan 25, 2018 at 8:53 AM, Raley, Jim <James.Raley@wpxenergy.com> wrote:

Re: RKI Exploration/WPX * Ross Draw Unit 14 * 30-015-25208 * 2RP-2812

Please find attached final C-141 and closure report for incident that occurred 2-11-2015.

Jim Raley | Environmental Specialist - Permian Basin

5315 Buena Vista Dr., Carlsbad, NM 88220

C: (575)689-7597 | james.ralej@wpxenergy.com

