



PHONE (575) 397-6388 • FAX (575) 397- 0397 • 1324 W. MARLAND • P.O. BOX 805 • HOBBS, NM 88241-0805
E-MAIL: cbrunson@bbcinternational.com

DELINEATION/REMEDATION WORKPLAN

OXY – MESQUITE MOUTRAY SWD (Leak Date: 6/26/19)

RP # 2RP-5575

This delineation workplan and remediation proposal addresses the releases associated with RP # 2RP-5575.

The following information includes:

1. Appropriate completed and signed C-141 pages.
2. Scaled digital site map with spill area demarcated and leak point identified along with sample point locations and areas of remediation at appropriate depths.
3. GPS information for sample points and sample methodology.
4. Depth to groundwater information (i.e., pdf of OSE search results, USGS search results, and/or copy of Chevron groundwater trend map).
5. Watercourse/features map within 1000 feet.
6. BLM Cave Karst map.
7. FEMA National Flood map.
8. Laboratory analysis results summary table and original laboratory analysis reports.
9. Potentially other pertinent information as necessary for site specific purposes.

Based on the information included in this package and the NMOCD rules, the following remediation is proposed:

OXY will excavate the spill area as depicted on the following site diagram. The leak near SP1 and SP2 (GREEN shade on diagram) will be excavated to a depth of 3 feet. The leak area near SP3 – SP7 (YELLOW shade on diagram) will be excavated to a depth of 4 feet.

Bottom confirmation samples will be collected every 75 feet.

The entire site will then be backfilled with clean soil and revegetated (if warranted) to the standards of the appropriate regulatory agency or private surface owner.

All excavated materials will be disposed of at an NMOCD-approved disposal facility.

Form C-141

Page 3

State of New Mexico
Oil Conservation Division

Incident ID	
District RP	2RP-5575
Facility ID	
Application ID	

Site Assessment/Characterization*This information must be provided to the appropriate district office no later than 90 days after the release discovery date.*

What is the shallowest depth to groundwater beneath the area affected by the release?	52' (ft bgs)
Did this release impact groundwater or surface water?	<input type="checkbox"/> Yes <input checked="" type="checkbox"/> No
Are the lateral extents of the release within 300 feet of a continuously flowing watercourse or any other significant watercourse?	<input type="checkbox"/> Yes <input checked="" type="checkbox"/> No
Are the lateral extents of the release within 200 feet of any lakebed, sinkhole, or playa lake (measured from the ordinary high-water mark)?	<input type="checkbox"/> Yes <input checked="" type="checkbox"/> No
Are the lateral extents of the release within 300 feet of an occupied permanent residence, school, hospital, institution, or church?	<input type="checkbox"/> Yes <input checked="" type="checkbox"/> No
Are the lateral extents of the release within 500 horizontal feet of a spring or a private domestic fresh water well used by less than five households for domestic or stock watering purposes?	<input type="checkbox"/> Yes <input checked="" type="checkbox"/> No
Are the lateral extents of the release within 1000 feet of any other fresh water well or spring?	<input type="checkbox"/> Yes <input checked="" type="checkbox"/> No
Are the lateral extents of the release within incorporated municipal boundaries or within a defined municipal fresh water well field?	<input type="checkbox"/> Yes <input checked="" type="checkbox"/> No
Are the lateral extents of the release within 300 feet of a wetland?	<input type="checkbox"/> Yes <input checked="" type="checkbox"/> No
Are the lateral extents of the release overlying a subsurface mine?	<input type="checkbox"/> Yes <input checked="" type="checkbox"/> No
Are the lateral extents of the release overlying an unstable area such as karst geology?	<input checked="" type="checkbox"/> Yes <input type="checkbox"/> No
Are the lateral extents of the release within a 100-year floodplain?	<input type="checkbox"/> Yes <input checked="" type="checkbox"/> No
Did the release impact areas not on an exploration, development, production, or storage site?	<input checked="" type="checkbox"/> Yes <input type="checkbox"/> No

Attach a comprehensive report (electronic submittals in .pdf format are preferred) demonstrating the lateral and vertical extents of soil contamination associated with the release have been determined. Refer to 19.15.29.11 NMAC for specifics.

Characterization Report Checklist: *Each of the following items must be included in the report.*

- ☒ Scaled site map showing impacted area, surface features, subsurface features, delineation points, and monitoring wells.
- ☐ Field data
- ☒ Data table of soil contaminant concentration data
- ☒ Depth to water determination
- ☒ Determination of water sources and significant watercourses within ½-mile of the lateral extents of the release
- ☐ Boring or excavation logs
- ☐ Photographs including date and GIS information
- ☒ Topographic/Aerial maps
- ☒ Laboratory data including chain of custody

If the site characterization report does not include completed efforts at remediation of the release, the report must include a proposed remediation plan. That plan must include the estimated volume of material to be remediated, the proposed remediation technique, proposed sampling plan and methods, anticipated timelines for beginning and completing the remediation. The closure criteria for a release are contained in Table 1 of 19.15.29.12 NMAC, however, use of the table is modified by site- and release-specific parameters.

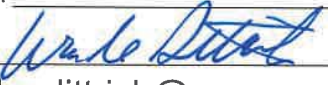
Form C-141

Page 4

State of New Mexico
Oil Conservation Division

Incident ID	
District RP	2RP-5575
Facility ID	
Application ID	

I hereby certify that the information given above is true and complete to the best of my knowledge and understand that pursuant to OCD rules and regulations all operators are required to report and/or file certain release notifications and perform corrective actions for releases which may endanger public health or the environment. The acceptance of a C-141 report by the OCD does not relieve the operator of liability should their operations have failed to adequately investigate and remediate contamination that pose a threat to groundwater, surface water, human health or the environment. In addition, OCD acceptance of a C-141 report does not relieve the operator of responsibility for compliance with any other federal, state, or local laws and/or regulations.

Printed Name: Wade Dittrich Title: Environmental Coordinator
Signature:  Date: 11-13-19
email: wade_dittrich@oxy.com Telephone: (575) 390-2828

OCD Only

Received by: _____ Date: _____

Form C-141

Page 5

State of New Mexico
Oil Conservation Division

Incident ID	
District RP	2RP-5575
Facility ID	
Application ID	

Remediation Plan

Remediation Plan Checklist: *Each of the following items must be included in the plan.*

- ☒ Detailed description of proposed remediation technique
- ☒ Scaled sitemap with GPS coordinates showing delineation points
- ☒ Estimated volume of material to be remediated
- ☒ Closure criteria is to Table 1 specifications subject to 19.15.29.12(C)(4) NMAC
- ☒ Proposed schedule for remediation (note if remediation plan timeline is more than 90 days OCD approval is required)

Deferral Requests Only: *Each of the following items must be confirmed as part of any request for deferral of remediation.*

- ☐ Contamination must be in areas immediately under or around production equipment where remediation could cause a major facility deconstruction.
- ☐ Extents of contamination must be fully delineated.
- ☐ Contamination does not cause an imminent risk to human health, the environment, or groundwater.

I hereby certify that the information given above is true and complete to the best of my knowledge and understand that pursuant to OCD rules and regulations all operators are required to report and/or file certain release notifications and perform corrective actions for releases which may endanger public health or the environment. The acceptance of a C-141 report by the OCD does not relieve the operator of liability should their operations have failed to adequately investigate and remediate contamination that pose a threat to groundwater, surface water, human health or the environment. In addition, OCD acceptance of a C-141 report does not relieve the operator of responsibility for compliance with any other federal, state, or local laws and/or regulations.

Printed Name: Wade Dittrich Title: Environmental CoordinatorSignature:  Date: 11-13-19email: wade_dittrich@oxy.com Telephone: (575) 390-2828**OCD Only**

Received by: _____ Date: _____





☐ Approved ☐ Approved with Attached Conditions of Approval ☐ Denied ☐ Deferral Approved

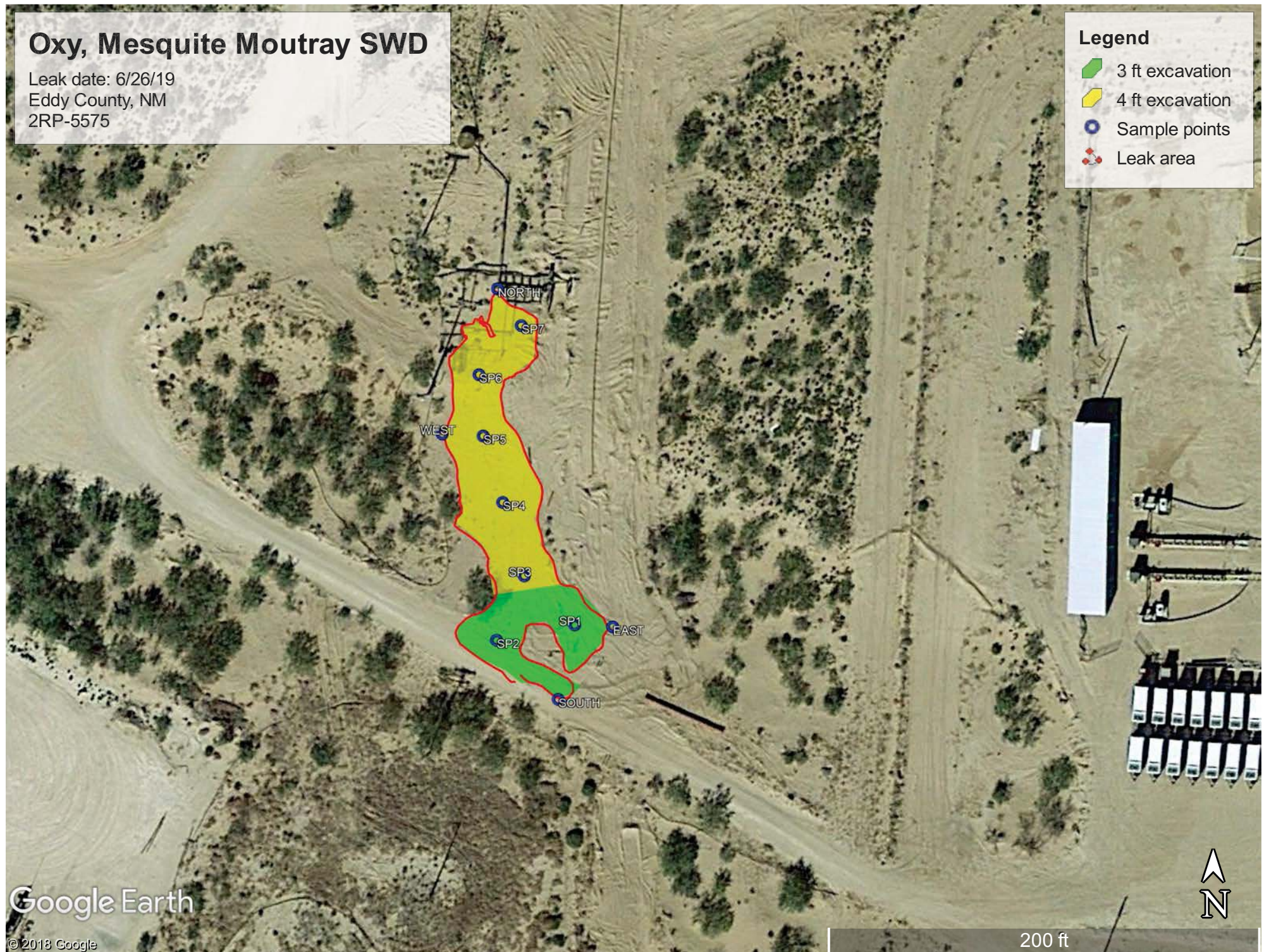
Signature: _____ Date: _____

Oxy, Mesquite Moutray SWD

Leak date: 6/26/19
Eddy County, NM
2RP-5575

Legend

-  3 ft excavation
-  4 ft excavation
-  Sample points
-  Leak area



Oxy, Mesquite Moutray SWD

Sample points

SP1, N 32.19522 W-103.98536

SP2, N 32.19520 W-103.98548

SP3, N 32.19529 W-103.98544

SP4, N 32.19538 W-103.98547

SP5, N 32.19547 W-103.98550

SP6, N 32.19554 W-103.98550

SP7, N 32.19561 W-103.98544

NORTH, N 32.19565 W-103.98547

SOUTH, N 32.19513 W-103.98538

EAST, N 32.19522 W-103.98530

WEST, N 32.19547 W-103.98556



USGS Home
Contact USGS
Search USGS

National Water Information System: Web Interface

USGS Water Resources

Data Category:
Groundwater

Geographic Area:
New Mexico

GO

Click to hideNews Bulletins

- Introducing The Next Generation of USGS Water Data for the Nation
- Full News

Groundwater levels for New Mexico

Click to hide state-specific text

Search Results -- 1 sites found

Agency code = usgs
site_no list =

- 321355104012001

Minimum number of levels = 1
[Save file of selected sites](#) to local disk for future upload

USGS 321355104012001 24S.29E.07.14444

Eddy County, New Mexico
Latitude 32°13'55", Longitude 104°01'20" NAD27
Land-surface elevation 2,983 feet above NAVD88
The depth of the well is 160 feet below land surface.
This well is completed in the Castile Formation (312CSTL) local aquifer.

Output formats

Table of data
Tab-separated data
Graph of data
Reselect period

Date	Time	? Water-level date-time accuracy	Water level, feet below land surface	Water level, feet above specific vertical datum	Referenced vertical datum	? Water-level accuracy	? Status	? Method of measurement	? Measuring agency	? Source of measurem
1983-02-01		D	47.14			2			U	
1987-10-16		D	51.84			2			U	
1988-02-11		D	52.19			2			U	
1992-10-20		D	51.78			2			S	

Explanation

Section	Code	Description
Water-level date-time accuracy	D	Date is accurate to the Day
Water-level accuracy	2	Water level accuracy to nearest hundredth of a foot
Status		The reported water-level measurement represents a static level
Method of measurement	S	Steel-tape measurement.
Method of measurement	U	Unknown method.
Measuring agency		Not determined
Source of measurement	U	Source is unknown.
Water-level approval status	A	Approved for publication -- Processing and review completed.

[Questions about sites/data?](#)
[Feedback on this web site](#)
[Automated retrievals](#)
[Help](#)
[Data Tips](#)
[Explanation of terms](#)
[Subscribe for system changes](#)
[News](#)

[Accessibility](#) [Plug-Ins](#) [FOIA](#) [Privacy](#) [Policies and Notices](#)

[U.S. Department of the Interior](#) | [U.S. Geological Survey](#)

Title: Groundwater for New Mexico: Water Levels

URL: <https://nwis.waterdata.usgs.gov/nm/nwis/gwlevels?>

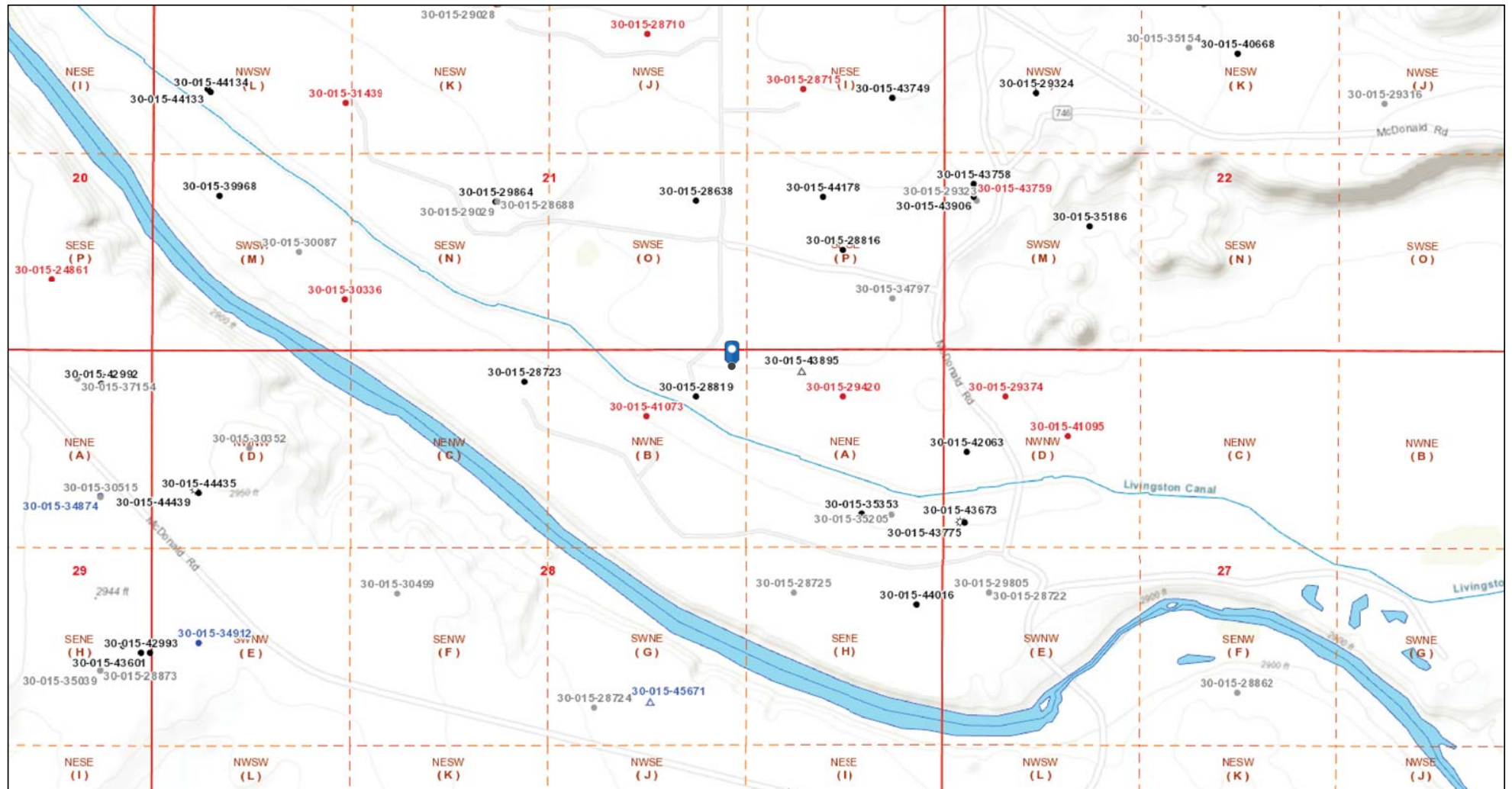
Page Contact Information: [New Mexico Water Data Maintainer](#)

Page Last Modified: 2019-07-08 14:10:51 EDT

0.5 0.47 nadww01



Oxy, Mesquite Moutray SWD



7/8/2019 12:00:50 PM

Well Locations - Small Scale

- Active
- New
- Plugged
- Cancelled
- Temporarily Abandoned

Well Locations - Large Scale

- Miscellaneous
- CO2 Active
- CO2 Cancelled
- CO2 New
- CO2 Plugged
- CO2 Temporarily Abandoned

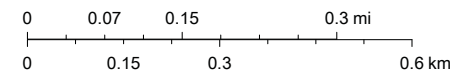
- ☆ Gas Active
- ☆ Gas, Cancelled, Never Drilled
- ☆ Gas, New
- ☆ Gas, Plugged
- ☆ Gas, Temporarily Abandoned
- ☆ Injection, Active

- ☆ Injection, Cancelled
- ☆ Injection, New
- ☆ Injection, Plugged
- ☆ Injection, Temporarily Abandoned
- Oil, Active
- Oil, Cancelled

- Oil, New
- Oil, Plugged
- Oil, Temporarily Abandoned
- △ Salt Water Injection, Active
- △ Salt Water Injection, Cancelled
- △ Salt Water Injection, New

- △ Salt Water Injection, Plugged
- △ Salt Water Injection Temporarily Abandoned
- Water, Active
- Water, Cancelled
- Water, New
- Water, Plugged

1:9,028





Bureau of Land Management, Texas Parks & Wildlife, Esri, HERE, Garmin, INCREMENT P, Intermap, USGS, METI/NASA, EPA, USDA, OCD, BLM

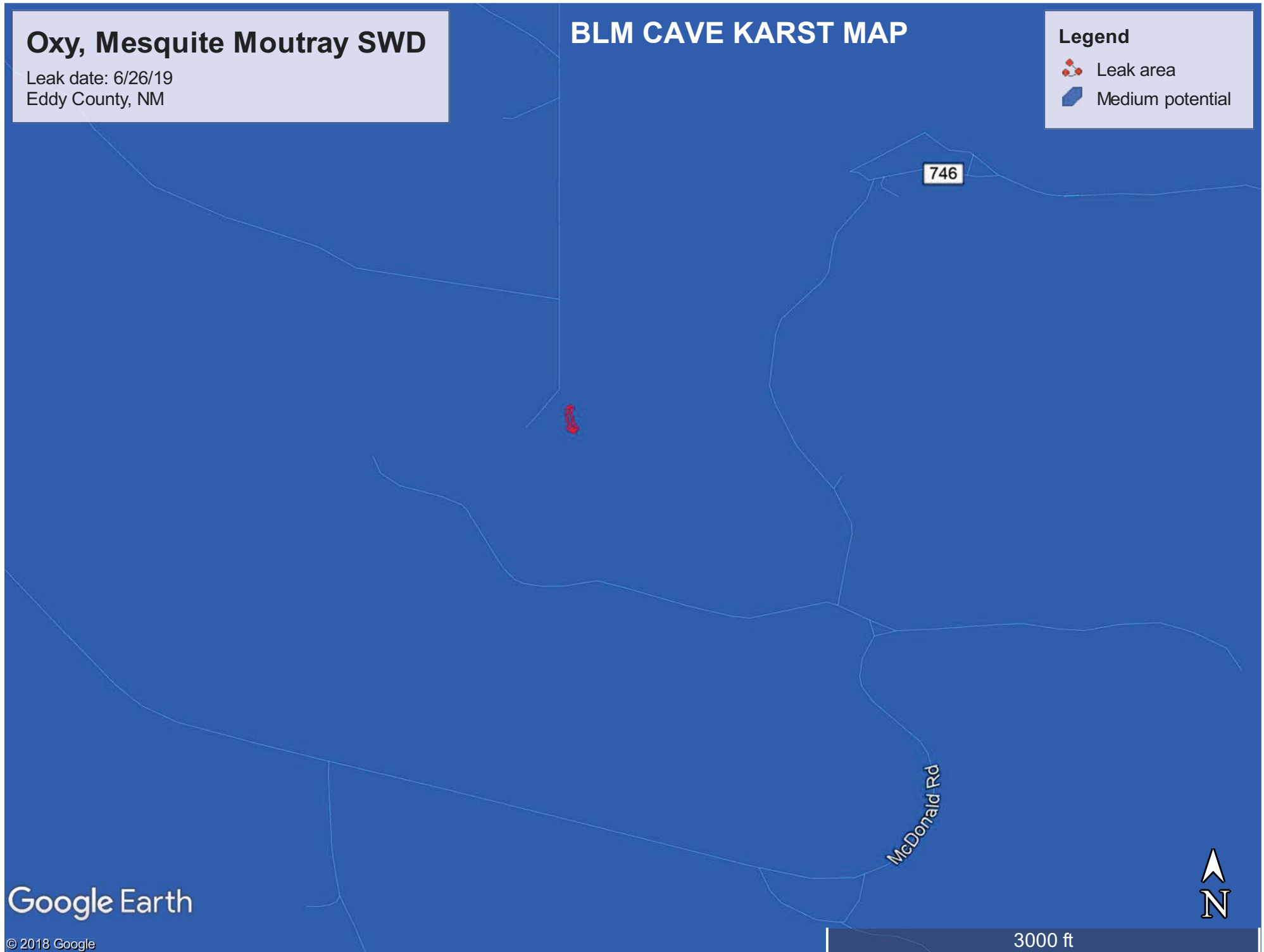
Oxy, Mesquite Moutray SWD

Leak date: 6/26/19
Eddy County, NM

BLM CAVE KARST MAP

Legend

-  Leak area
-  Medium potential



National Flood Hazard Layer FIRMette



32°11'58.63"N

103°59'26.42"W



USGS The National Map: Orthoimagery, Data refreshed April, 2019.

103°58'48.96"W

Legend

SEE FIS REPORT FOR DETAILED LEGEND AND INDEX MAP FOR FIRM PANEL LAYOUT

SPECIAL FLOOD HAZARD AREAS		Without Base Flood Elevation (BFE) Zone A, V, A99
		With BFE or Depth Zone AE, AO, AH, VE, AR
OTHER AREAS OF FLOOD HAZARD		Regulatory Floodway
		0.2% Annual Chance Flood Hazard, Areas of 1% annual chance flood with average depth less than one foot or with drainage areas of less than one square mile Zone X
		Future Conditions 1% Annual Chance Flood Hazard Zone X
		Area with Reduced Flood Risk due to Levee. See Notes. Zone X
OTHER AREAS		Area with Flood Risk due to Levee Zone D
		Area of Minimal Flood Hazard Zone X
GENERAL STRUCTURES		Effective LOMRs
		Area of Undetermined Flood Hazard Zone D
OTHER FEATURES		Channel, Culvert, or Storm Sewer
		Levee, Dike, or Floodwall
MAP PANELS		Cross Sections with 1% Annual Chance Water Surface Elevation
		Coastal Transect
		Base Flood Elevation Line (BFE)
		Limit of Study
		Jurisdiction Boundary
		Coastal Transect Baseline
		Profile Baseline
		Hydrographic Feature
		Digital Data Available
		No Digital Data Available
		Unmapped
		N



The pin displayed on the map is an approximate point selected by the user and does not represent an authoritative property location.

This map complies with FEMA's standards for the use of digital flood maps if it is not void as described below. The basemap shown complies with FEMA's basemap accuracy standards

The flood hazard information is derived directly from the authoritative NFHL web services provided by FEMA. This map was exported on 7/8/2019 at 2:31:12 PM and does not reflect changes or amendments subsequent to this date and time. The NFHL and effective information may change or become superseded by new data over time.

This map image is void if the one or more of the following map elements do not appear: basemap imagery, flood zone labels, legend, scale bar, map creation date, community identifiers, FIRM panel number, and FIRM effective date. Map images for unmapped and unmodernized areas cannot be used for regulatory purposes.

0 250 500 1,000 1,500 2,000 Feet

1:6,000

32°11'28.18"N

Laboratory Analytical Results Summary
Mesquite Moutray SWD (6/26/19)

		Sample ID	SP1 @ SURFACE	SP1 @ 1'	SP1 @ 2'	SP1 @ 3'	SP1 @ 4'
Analyte	Method	Date	10/4/19	10/4/19	10/4/19	10/4/19	10/4/19
			mg/kg	mg/kg	mg/kg	mg/kg	mg/kg
Benzene	BTEX 8021B		<0.050	<0.050	n/a	n/a	n/a
Toluene	BTEX 8021B		<0.050	<0.050	n/a	n/a	n/a
Ethylbenzene	BTEX 8021B		<0.050	<0.050	n/a	n/a	n/a
Total Xylenes	BTEX 8021B		<0.150	<0.150	n/a	n/a	n/a
Total BTEX	BTEX 8021B		<0.300	<0.300	n/a	n/a	n/a
Chloride	SM4500Cl-B		576	2800	1200	112	160
GRO	TPH 8015M		<10.0	<10.0	n/a	n/a	n/a
DRO	TPH 8015M		<10.0	<10.0	n/a	n/a	n/a
EXT DRO	TPH 8015M		<10.0	<10.0	n/a	n/a	n/a

		Sample ID	SP2 @ SURFACE	SP2 @ 1'	SP2 @ 2'	SP2 @ 3'	SP2 @ 4'
Analyte	Method	Date	10/4/19	10/4/19	10/4/19	10/4/19	10/4/19
			mg/kg	mg/kg	mg/kg	mg/kg	mg/kg
Benzene	BTEX 8021B		<0.050	<0.050	n/a	n/a	n/a
Toluene	BTEX 8021B		<0.050	<0.050	n/a	n/a	n/a
Ethylbenzene	BTEX 8021B		<0.050	<0.050	n/a	n/a	n/a
Total Xylenes	BTEX 8021B		<0.150	<0.150	n/a	n/a	n/a
Total BTEX	BTEX 8021B		<0.300	<0.300	n/a	n/a	n/a
Chloride	SM4500Cl-B		1840	2640	1170	144	144
GRO	TPH 8015M		<10.0	<10.0	n/a	n/a	n/a
DRO	TPH 8015M		<10.0	<10.0	n/a	n/a	n/a
EXT DRO	TPH 8015M		<10.0	<10.0	n/a	n/a	n/a

		Sample ID	SP3 @ SURFACE	SP3 @ 1'	SP3 @ 2'	SP3 @ 3'	SP3 @ 4'	SP3 @ 5'	SP3 @ 6'	SP3 @ 7'	SP3 @ 8'
Analyte	Method	Date	10/4/19	10/4/19	10/4/19	10/4/19	10/4/19	10/4/19	10/4/19	10/4/19	10/4/19
			mg/kg	mg/kg	mg/kg	mg/kg	mg/kg	mg/kg	mg/kg	mg/kg	mg/kg
Benzene	BTEX 8021B		<0.050	<0.050	n/a	n/a	n/a	n/a	n/a	n/a	n/a
Toluene	BTEX 8021B		<0.050	<0.050	n/a	n/a	n/a	n/a	n/a	n/a	n/a
Ethylbenzene	BTEX 8021B		<0.050	<0.050	n/a	n/a	n/a	n/a	n/a	n/a	n/a
Total Xylenes	BTEX 8021B		<0.150	<0.150	n/a	n/a	n/a	n/a	n/a	n/a	n/a
Total BTEX	BTEX 8021B		<0.300	<0.300	n/a	n/a	n/a	n/a	n/a	n/a	n/a
Chloride	SM4500Cl-B		1150	3000	4160	3280	5680	5600	1330	32	<16.0
GRO	TPH 8015M		<10.0	<10.0	n/a	n/a	n/a	n/a	n/a	n/a	n/a
DRO	TPH 8015M		<10.0	<10.0	n/a	n/a	n/a	n/a	n/a	n/a	n/a
EXT DRO	TPH 8015M		<10.0	<10.0	n/a	n/a	n/a	n/a	n/a	n/a	n/a

		Sample ID	SP4 @ SURFACE	SP4 @ 1'	SP4 @ 2'	SP4 @ 3'	SP4 @ 4'	SP4 @ 5'	SP4 @ 6'
Analyte	Method	Date	10/4/19	10/4/19	10/4/19	10/4/19	10/9/19	10/9/19	10/9/19
			mg/kg	mg/kg	mg/kg	mg/kg	mg/kg	mg/kg	mg/kg
Benzene	BTEX 8021B		<0.050	<0.050	<0.050	n/a	n/a	n/a	n/a
Toluene	BTEX 8021B		<0.050	<0.050	<0.050	n/a	n/a	n/a	n/a
Ethylbenzene	BTEX 8021B		<0.050	<0.050	<0.050	n/a	n/a	n/a	n/a
Total Xylenes	BTEX 8021B		<0.150	<0.150	<0.150	n/a	n/a	n/a	n/a
Total BTEX	BTEX 8021B		<0.300	<0.300	<0.300	n/a	n/a	n/a	n/a
Chloride	SM4500Cl-B		8530	2480	864	2320	1100	32	<16.0
GRO	TPH 8015M		<10.0	<10.0	<10.0	n/a	n/a	n/a	n/a
DRO	TPH 8015M		1420	<10.0	<10.0	n/a	n/a	n/a	n/a
EXT DRO	TPH 8015M		509	<10.0	<10.0	n/a	n/a	n/a	n/a

Laboratory Analytical Results Summary
Mesquite Moutray SWD (6/26/19)

		Sample ID	SP5 @ SURFACE	SP5 @ 1'	SP5 @ 2'	SP5 @ 3'	SP5 @ 4'	SP5 @ 5'	SP5 @ 6'
Analyte	Method	Date	10/9/19	10/9/19	10/9/19	10/9/19	10/9/19	10/9/19	10/9/19
			mg/kg	mg/kg	mg/kg	mg/kg	mg/kg	mg/kg	mg/kg
Benzene	BTEX 8021B		<0.050	<0.050	n/a	n/a	n/a	n/a	n/a
Toluene	BTEX 8021B		<0.050	<0.050	n/a	n/a	n/a	n/a	n/a
Ethylbenzene	BTEX 8021B		<0.050	<0.050	n/a	n/a	n/a	n/a	n/a
Total Xylenes	BTEX 8021B		<0.150	<0.150	n/a	n/a	n/a	n/a	n/a
Total BTEX	BTEX 8021B		<0.300	<0.300	n/a	n/a	n/a	n/a	n/a
Chloride	SM4500CI-B		7060	4320	1020	1300	608	32	16
GRO	TPH 8015M		<10.0	<10.0	n/a	n/a	n/a	n/a	n/a
DRO	TPH 8015M		<10.0	<10.0	n/a	n/a	n/a	n/a	n/a
EXT DRO	TPH 8015M		<10.0	<10.0	n/a	n/a	n/a	n/a	n/a

		Sample ID	SP6 @ SURFACE	SP6 @ 1'	SP6 @ 2'	SP6 @ 3'	SP6 @ 4'	SP6 @ 5'	SP6 @ 6'
Analyte	Method	Date	10/9/19	10/9/19	10/9/19	10/9/19	10/9/19	10/9/19	10/9/19
			mg/kg	mg/kg	mg/kg	mg/kg	mg/kg	mg/kg	mg/kg
Benzene	BTEX 8021B		<0.050	<0.050	n/a	n/a	n/a	n/a	n/a
Toluene	BTEX 8021B		<0.050	<0.050	n/a	n/a	n/a	n/a	n/a
Ethylbenzene	BTEX 8021B		<0.050	<0.050	n/a	n/a	n/a	n/a	n/a
Total Xylenes	BTEX 8021B		<0.150	<0.150	n/a	n/a	n/a	n/a	n/a
Total BTEX	BTEX 8021B		<0.300	<0.300	n/a	n/a	n/a	n/a	n/a
Chloride	SM4500CI-B		7200	2560	3040	1010	1090	16	32
GRO	TPH 8015M		<10.0	<10.0	n/a	n/a	n/a	n/a	n/a
DRO	TPH 8015M		<10.0	<10.0	n/a	n/a	n/a	n/a	n/a
EXT DRO	TPH 8015M		<10.0	<10.0	n/a	n/a	n/a	n/a	n/a

		Sample ID	SP7 @ SURFACE	SP7 @ 1'	SP7 @ 2'	SP7 @ 3'	SP7 @ 4'	SP7 @ 5'	SP7 @ 6'	SP7 @ 7'	SP7 @ 8'	SP7 @ 9'	SP7 @ 10'
Analyte	Method	Date	10/9/19	10/9/19	10/9/19	10/9/19	10/9/19	10/9/19	10/9/19	10/10/19	10/10/19	10/10/19	10/10/19
			mg/kg	mg/kg	mg/kg	mg/kg	mg/kg	mg/kg	mg/kg	mg/kg	mg/kg	mg/kg	mg/kg
Benzene	BTEX 8021B		<0.050	<0.050	n/a	n/a	n/a	n/a	n/a	n/a	n/a	n/a	n/a
Toluene	BTEX 8021B		<0.050	<0.050	n/a	n/a	n/a	n/a	n/a	n/a	n/a	n/a	n/a
Ethylbenzene	BTEX 8021B		<0.050	<0.050	n/a	n/a	n/a	n/a	n/a	n/a	n/a	n/a	n/a
Total Xylenes	BTEX 8021B		<0.150	<0.150	n/a	n/a	n/a	n/a	n/a	n/a	n/a	n/a	n/a
Total BTEX	BTEX 8021B		<0.300	<0.300	n/a	n/a	n/a	n/a	n/a	n/a	n/a	n/a	n/a
Chloride	SM4500CI-B		1760	3040	3960	4320	5760	7060	4800	8400	13400	9330	8400
GRO	TPH 8015M		<10.0	<10.0	n/a	n/a	n/a	n/a	n/a	n/a	n/a	n/a	n/a
DRO	TPH 8015M		<10.0	<10.0	n/a	n/a	n/a	n/a	n/a	n/a	n/a	n/a	n/a
EXT DRO	TPH 8015M		<10.0	<10.0	n/a	n/a	n/a	n/a	n/a	n/a	n/a	n/a	n/a

		Sample ID	NORTH @ SURFACE	EAST @ SURFACE	WEST @ SURFACE	SOUTH @ SURFACE
Analyte	Method	Date	10/10/19	10/10/19	10/10/19	10/10/19
			mg/kg	mg/kg	mg/kg	mg/kg
Benzene	BTEX 8021B		<0.050	<0.050	<0.050	<0.050
Toluene	BTEX 8021B		<0.050	<0.050	<0.050	<0.050
Ethylbenzene	BTEX 8021B		<0.050	<0.050	<0.050	<0.050
Total Xylenes	BTEX 8021B		<0.150	<0.150	<0.150	<0.150
Total BTEX	BTEX 8021B		<0.300	<0.300	<0.300	<0.300
Chloride	SM4500CI-B		32	<16.0	<16.0	<16.0
GRO	TPH 8015M		<10.0	<10.0	<10.0	<10.0
DRO	TPH 8015M		<10.0	<10.0	<10.0	<10.0
EXT DRO	TPH 8015M		<10.0	<10.0	<10.0	<10.0



PHONE (575) 393-2326 ° 101 E. MARLAND ° HOBBS, NM 88240

October 18, 2019

Cliff Brunson

BBC International, Inc.

P.O. Box 805

Hobbs, NM 88241

RE: MESQUITE MOUTRAY SWD

Enclosed are the results of analyses for samples received by the laboratory on 10/11/19 17:00.

Cardinal Laboratories is accredited through Texas NELAP under certificate number T104704398-18-11. Accreditation applies to drinking water, non-potable water and solid and chemical materials. All accredited analytes are denoted by an asterisk (*). For a complete list of accredited analytes and matrices visit the TCEQ website at www.tceq.texas.gov/field/qa/lab_accred_certif.html.

Cardinal Laboratories is accredited through the State of Colorado Department of Public Health and Environment for:

Method EPA 552.2	Total Haloacetic Acids (HAA-5)
Method EPA 524.2	Total Trihalomethanes (TTHM)
Method EPA 524.4	Regulated VOCs (V1, V2, V3)

Cardinal Laboratories is accredited through the State of New Mexico Environment Department for:

Method SM 9223-B	Total Coliform and E. coli (Colilert MMO-MUG)
Method EPA 524.2	Regulated VOCs and Total Trihalomethanes (TTHM)
Method EPA 552.2	Total Haloacetic Acids (HAA-5)

Accreditation applies to public drinking water matrices for State of Colorado and New Mexico.

This report meets NELAP requirements and is made up of a cover page, analytical results, and a copy of the original chain-of-custody. If you have any questions concerning this report, please feel free to contact me.

Sincerely,

A handwritten signature in black ink that reads "Coley D. Keene".

Celey D. Keene

Lab Director/Quality Manager



PHONE (575) 393-2326 ° 101 E. MARLAND ° HOBBS, NM 88240

Analytical Results For:

BBC International, Inc.
P.O. Box 805
Hobbs NM, 88241

Project: MESQUITE MOUTRAY SWD
Project Number: 6/26/2019
Project Manager: Cliff Brunson
Fax To: (575) 397-0397

Reported:
18-Oct-19 11:44

Sample ID	Laboratory ID	Matrix	Date Sampled	Date Received
SP 1 @ SURFACE	H903469-01	Soil	04-Oct-19 09:20	11-Oct-19 17:00
SP 1 @ 1'	H903469-02	Soil	04-Oct-19 09:30	11-Oct-19 17:00
SP 1 @ 2'	H903469-03	Soil	04-Oct-19 09:40	11-Oct-19 17:00
SP 1 @ 3'	H903469-04	Soil	04-Oct-19 10:05	11-Oct-19 17:00
SP 1 @ 4'	H903469-05	Soil	04-Oct-19 10:22	11-Oct-19 17:00
SP 2 @ SURFACE	H903469-06	Soil	04-Oct-19 10:30	11-Oct-19 17:00
SP 2 @ 1'	H903469-07	Soil	04-Oct-19 10:40	11-Oct-19 17:00
SP 2 @ 2'	H903469-08	Soil	04-Oct-19 10:55	11-Oct-19 17:00
SP 2 @ 3'	H903469-09	Soil	04-Oct-19 11:11	11-Oct-19 17:00
SP 2 @ 4'	H903469-10	Soil	04-Oct-19 11:30	11-Oct-19 17:00
SP 3 @ SURFACE	H903469-11	Soil	04-Oct-19 11:40	11-Oct-19 17:00
SP 3 @ 1'	H903469-12	Soil	04-Oct-19 11:50	11-Oct-19 17:00
SP 3 @ 2'	H903469-13	Soil	04-Oct-19 11:59	11-Oct-19 17:00
SP 3 @ 3'	H903469-14	Soil	04-Oct-19 12:15	11-Oct-19 17:00
SP 3 @ 4'	H903469-15	Soil	04-Oct-19 13:11	11-Oct-19 17:00
SP 3 @ 5'	H903469-16	Soil	04-Oct-19 13:38	11-Oct-19 17:00
SP 3 @ 6'	H903469-17	Soil	04-Oct-19 13:40	11-Oct-19 17:00
SP 3 @ 7'	H903469-18	Soil	04-Oct-19 13:50	11-Oct-19 17:00
SP 3 @ 8'	H903469-19	Soil	04-Oct-19 13:59	11-Oct-19 17:00
SP 4 @ SURFACE	H903469-20	Soil	04-Oct-19 14:18	11-Oct-19 17:00
SP 4 @ 1'	H903469-21	Soil	04-Oct-19 14:20	11-Oct-19 17:00
SP 4 @ 2'	H903469-22	Soil	04-Oct-19 14:28	11-Oct-19 17:00
SP 4 @ 3'	H903469-23	Soil	04-Oct-19 14:40	11-Oct-19 17:00
SP 4 @ 4'	H903469-24	Soil	09-Oct-19 09:11	11-Oct-19 17:00
SP 4 @ 5'	H903469-25	Soil	09-Oct-19 09:22	11-Oct-19 17:00
SP 4 @ 6'	H903469-26	Soil	09-Oct-19 09:43	11-Oct-19 17:00
SP 5 @ SURFACE	H903469-27	Soil	09-Oct-19 09:59	11-Oct-19 17:00

Cardinal Laboratories

*=Accredited Analyte

PLEASE NOTE: Liability and Damages. Cardinal's liability and client's exclusive remedy for any claim arising, whether based in contract or tort, shall be limited to the amount paid by client for analyses. All claims, including those for negligence or any other cause whatsoever shall be deemed waived unless made in writing and received by Cardinal within thirty (30) days after completion of the applicable service. In no event shall Cardinal be liable for incidental or consequential damage including, without limitation, business interruptions, loss of use, or loss of profits incurred by client, its subsidiaries, affiliates or successors arising out of or related to the performance of the services hereunder by Cardinal, regardless of whether such claim is based upon any of the above stated reasons or otherwise. Results relate only to the samples identified above. This report shall not be reproduced except in full with written approval of Cardinal Laboratories.

Celey D. Keene, Lab Director/Quality Manager



PHONE (575) 393-2326 ° 101 E. MARLAND ° HOBBS, NM 88240

Analytical Results For:

BBC International, Inc.
P.O. Box 805
Hobbs NM, 88241

Project: MESQUITE MOUTRAY SWD
Project Number: 6/26/2019
Project Manager: Cliff Brunson
Fax To: (575) 397-0397

Reported:
18-Oct-19 11:44

SP 5 @ 1'	H903469-28	Soil	09-Oct-19 10:15	11-Oct-19 17:00
SP 5 @ 2'	H903469-29	Soil	09-Oct-19 10:27	11-Oct-19 17:00
SP 5 @ 3'	H903469-30	Soil	09-Oct-19 10:47	11-Oct-19 17:00
SP 5 @ 4'	H903469-31	Soil	09-Oct-19 11:02	11-Oct-19 17:00
SP 5 @ 5'	H903469-32	Soil	09-Oct-19 11:15	11-Oct-19 17:00
SP 5 @ 6'	H903469-33	Soil	09-Oct-19 11:31	11-Oct-19 17:00
SP 6 @ SURFACE	H903469-34	Soil	09-Oct-19 11:40	11-Oct-19 17:00
SP 6 @ 1'	H903469-35	Soil	09-Oct-19 11:50	11-Oct-19 17:00
SP 6 @ 2'	H903469-36	Soil	09-Oct-19 12:12	11-Oct-19 17:00
SP 6 @ 3'	H903469-37	Soil	09-Oct-19 12:52	11-Oct-19 17:00
SP 6 @ 4'	H903469-38	Soil	09-Oct-19 13:01	11-Oct-19 17:00
SP 6 @ 5'	H903469-39	Soil	09-Oct-19 13:11	11-Oct-19 17:00
SP 6 @ 6'	H903469-40	Soil	09-Oct-19 13:22	11-Oct-19 17:00
SP 7 @ SURFACE	H903469-41	Soil	09-Oct-19 13:25	11-Oct-19 17:00
SP 7 @ 1'	H903469-42	Soil	09-Oct-19 13:35	11-Oct-19 17:00
SP 7 @ 2'	H903469-43	Soil	09-Oct-19 13:45	11-Oct-19 17:00
SP 7 @ 3'	H903469-44	Soil	09-Oct-19 14:01	11-Oct-19 17:00
SP 7 @ 4'	H903469-45	Soil	09-Oct-19 14:22	11-Oct-19 17:00
SP 7 @ 5'	H903469-46	Soil	09-Oct-19 14:32	11-Oct-19 17:00
SP 7 @ 6'	H903469-47	Soil	09-Oct-19 14:39	11-Oct-19 17:00
SP 7 @ 7'	H903469-48	Soil	10-Oct-19 09:20	11-Oct-19 17:00
SP 7 @ 8'	H903469-49	Soil	10-Oct-19 09:49	11-Oct-19 17:00
SP 7 @ 9'	H903469-50	Soil	10-Oct-19 10:30	11-Oct-19 17:00
SP 7 @ 10'	H903469-51	Soil	10-Oct-19 10:59	11-Oct-19 17:00
NORTH @ SURFACE	H903469-52	Soil	10-Oct-19 11:28	11-Oct-19 17:00
EAST @ SURFACE	H903469-53	Soil	10-Oct-19 11:49	11-Oct-19 17:00
WEST @ SURFACE	H903469-54	Soil	10-Oct-19 12:59	11-Oct-19 17:00
SOUTH @ SURFACE	H903469-55	Soil	10-Oct-19 13:22	11-Oct-19 17:00

Cardinal Laboratories

*=Accredited Analyte

PLEASE NOTE: Liability and Damages. Cardinal's liability and client's exclusive remedy for any claim arising, whether based in contract or tort, shall be limited to the amount paid by client for analyses. All claims, including those for negligence or any other cause whatsoever shall be deemed waived unless made in writing and received by Cardinal within thirty (30) days after completion of the applicable service. In no event shall Cardinal be liable for incidental or consequential damage including, without limitation, business interruptions, loss of use, or loss of profits incurred by client, its subsidiaries, affiliates or successors arising out of or related to the performance of the services hereunder by Cardinal, regardless of whether such claim is based upon any of the above stated reasons or otherwise. Results relate only to the samples identified above. This report shall not be reproduced except in full with written approval of Cardinal Laboratories.

Celey D. Keene, Lab Director/Quality Manager

PHONE (575) 393-2326 ° 101 E. MARLAND ° HOBBS, NM 88240

Analytical Results For:

BBC International, Inc.
P.O. Box 805
Hobbs NM, 88241

Project: MESQUITE MOUTRAY SWD
Project Number: 6/26/2019
Project Manager: Cliff Brunson
Fax To: (575) 397-0397

Reported:
18-Oct-19 11:44

Client added BTEX & TPH to samples -21 and -22 on 10/17/19. This is the revised report and will replace the one sent on 10/17/19.

Cardinal Laboratories

*=Accredited Analyte

PLEASE NOTE: Liability and Damages. Cardinal's liability and client's exclusive remedy for any claim arising, whether based in contract or tort, shall be limited to the amount paid by client for analyses. All claims, including those for negligence or any other cause whatsoever shall be deemed waived unless made in writing and received by Cardinal within thirty (30) days after completion of the applicable service. In no event shall Cardinal be liable for incidental or consequential damage including, without limitation, business interruptions, loss of use, or loss of profits incurred by client, its subsidiaries, affiliates or successors arising out of or related to the performance of the services hereunder by Cardinal, regardless of whether such claim is based upon any of the above stated reasons or otherwise. Results relate only to the samples identified above. This report shall not be reproduced except in full with written approval of Cardinal Laboratories.

A handwritten signature in black ink that reads "Celey D. Keene".

Celey D. Keene, Lab Director/Quality Manager



PHONE (575) 393-2326 ° 101 E. MARLAND ° HOBBS, NM 88240

Analytical Results For:

BBC International, Inc.
P.O. Box 805
Hobbs NM, 88241

Project: MESQUITE MOUTRAY SWD
Project Number: 6/26/2019
Project Manager: Cliff Brunson
Fax To: (575) 397-0397

Reported:
18-Oct-19 11:44

SP 1 @ SURFACE**H903469-01 (Soil)**

Analyte	Result	MDL	Reporting Limit	Units	Dilution	Batch	Analyst	Analyzed	Method	Notes
---------	--------	-----	-----------------	-------	----------	-------	---------	----------	--------	-------

Cardinal Laboratories**Inorganic Compounds**

Analyte	Result	MDL	Reporting Limit	Units	Dilution	Batch	Analyst	Analyzed	Method	Notes
Chloride	576		16.0	mg/kg	4	9101521	AC	16-Oct-19	4500-Cl-B	

Volatile Organic Compounds by EPA Method 8021

Benzene*	<0.050		0.050	mg/kg	50	9101404	BF	15-Oct-19	8021B	
Toluene*	<0.050		0.050	mg/kg	50	9101404	BF	15-Oct-19	8021B	
Ethylbenzene*	<0.050		0.050	mg/kg	50	9101404	BF	15-Oct-19	8021B	
Total Xylenes*	<0.150		0.150	mg/kg	50	9101404	BF	15-Oct-19	8021B	
Total BTEX	<0.300		0.300	mg/kg	50	9101404	BF	15-Oct-19	8021B	

Surrogate: 4-Bromofluorobenzene (PID)			98.6 %	73.3-129		9101404	BF	15-Oct-19	8021B	
---------------------------------------	--	--	--------	----------	--	---------	----	-----------	-------	--

Petroleum Hydrocarbons by GC FID

GRO C6-C10*	<10.0		10.0	mg/kg	1	9101401	MS	14-Oct-19	8015B	
DRO >C10-C28*	<10.0		10.0	mg/kg	1	9101401	MS	14-Oct-19	8015B	
EXT DRO >C28-C36	<10.0		10.0	mg/kg	1	9101401	MS	14-Oct-19	8015B	

Surrogate: 1-Chlorooctane			111 %	41-142		9101401	MS	14-Oct-19	8015B	
---------------------------	--	--	-------	--------	--	---------	----	-----------	-------	--

Surrogate: 1-Chlorooctadecane			112 %	37.6-147		9101401	MS	14-Oct-19	8015B	
-------------------------------	--	--	-------	----------	--	---------	----	-----------	-------	--

Cardinal Laboratories

*=Accredited Analyte

PLEASE NOTE: Liability and Damages. Cardinal's liability and client's exclusive remedy for any claim arising, whether based in contract or tort, shall be limited to the amount paid by client for analyses. All claims, including those for negligence or any other cause whatsoever shall be deemed waived unless made in writing and received by Cardinal within thirty (30) days after completion of the applicable service. In no event shall Cardinal be liable for incidental or consequential damage including, without limitation, business interruptions, loss of use, or loss of profits incurred by client, its subsidiaries, affiliates or successors arising out of or related to the performance of the services hereunder by Cardinal, regardless of whether such claim is based upon any of the above stated reasons or otherwise. Results relate only to the samples identified above. This report shall not be reproduced except in full with written approval of Cardinal Laboratories.

Celey D. Keene, Lab Director/Quality Manager



PHONE (575) 393-2326 ° 101 E. MARLAND ° HOBBS, NM 88240

Analytical Results For:

BBC International, Inc.
P.O. Box 805
Hobbs NM, 88241

Project: MESQUITE MOUTRAY SWD
Project Number: 6/26/2019
Project Manager: Cliff Brunson
Fax To: (575) 397-0397

Reported:
18-Oct-19 11:44

SP 1 @ 1'
H903469-02 (Soil)

Analyte	Result	MDL	Reporting Limit	Units	Dilution	Batch	Analyst	Analyzed	Method	Notes
---------	--------	-----	-----------------	-------	----------	-------	---------	----------	--------	-------

Cardinal Laboratories**Inorganic Compounds**

Chloride	2800		16.0	mg/kg	4	9101521	AC	16-Oct-19	4500-Cl-B	
-----------------	-------------	--	------	-------	---	---------	----	-----------	-----------	--

Volatile Organic Compounds by EPA Method 8021

Benzene*	<0.050		0.050	mg/kg	50	9101404	BF	15-Oct-19	8021B	
Toluene*	<0.050		0.050	mg/kg	50	9101404	BF	15-Oct-19	8021B	
Ethylbenzene*	<0.050		0.050	mg/kg	50	9101404	BF	15-Oct-19	8021B	
Total Xylenes*	<0.150		0.150	mg/kg	50	9101404	BF	15-Oct-19	8021B	
Total BTEX	<0.300		0.300	mg/kg	50	9101404	BF	15-Oct-19	8021B	

Surrogate: 4-Bromofluorobenzene (PID) 97.8 % 73.3-129 9101404 BF 15-Oct-19 8021B

Petroleum Hydrocarbons by GC FID

GRO C6-C10*	<10.0		10.0	mg/kg	1	9101413	MS	15-Oct-19	8015B	
DRO >C10-C28*	<10.0		10.0	mg/kg	1	9101413	MS	15-Oct-19	8015B	
EXT DRO >C28-C36	<10.0		10.0	mg/kg	1	9101413	MS	15-Oct-19	8015B	

Surrogate: 1-Chlorooctane 112 % 41-142 9101413 MS 15-Oct-19 8015B

Surrogate: 1-Chlorooctadecane 110 % 37.6-147 9101413 MS 15-Oct-19 8015B

Cardinal Laboratories

*=Accredited Analyte

PLEASE NOTE: Liability and Damages. Cardinal's liability and client's exclusive remedy for any claim arising, whether based in contract or tort, shall be limited to the amount paid by client for analyses. All claims, including those for negligence or any other cause whatsoever shall be deemed waived unless made in writing and received by Cardinal within thirty (30) days after completion of the applicable service. In no event shall Cardinal be liable for incidental or consequential damage including, without limitation, business interruptions, loss of use, or loss of profits incurred by client, its subsidiaries, affiliates or successors arising out of or related to the performance of the services hereunder by Cardinal, regardless of whether such claim is based upon any of the above stated reasons or otherwise. Results relate only to the samples identified above. This report shall not be reproduced except in full with written approval of Cardinal Laboratories.

Celey D. Keene, Lab Director/Quality Manager



PHONE (575) 393-2326 ° 101 E. MARLAND ° HOBBS, NM 88240

Analytical Results For:

BBC International, Inc.
P.O. Box 805
Hobbs NM, 88241

Project: MESQUITE MOUTRAY SWD
Project Number: 6/26/2019
Project Manager: Cliff Brunson
Fax To: (575) 397-0397

Reported:
18-Oct-19 11:44

SP 1 @ 2'
H903469-03 (Soil)

Analyte	Result	MDL	Reporting Limit	Units	Dilution	Batch	Analyst	Analyzed	Method	Notes
---------	--------	-----	-----------------	-------	----------	-------	---------	----------	--------	-------

Cardinal Laboratories**Inorganic Compounds**

Chloride	1200		16.0	mg/kg	4	9101521	AC	16-Oct-19	4500-Cl-B	
-----------------	-------------	--	------	-------	---	---------	----	-----------	-----------	--

Cardinal Laboratories

*=Accredited Analyte

PLEASE NOTE: Liability and Damages. Cardinal's liability and client's exclusive remedy for any claim arising, whether based in contract or tort, shall be limited to the amount paid by client for analyses. All claims, including those for negligence or any other cause whatsoever shall be deemed waived unless made in writing and received by Cardinal within thirty (30) days after completion of the applicable service. In no event shall Cardinal be liable for incidental or consequential damage including, without limitation, business interruptions, loss of use, or loss of profits incurred by client, its subsidiaries, affiliates or successors arising out of or related to the performance of the services hereunder by Cardinal, regardless of whether such claim is based upon any of the above stated reasons or otherwise. Results relate only to the samples identified above. This report shall not be reproduced except in full with written approval of Cardinal Laboratories.

Celey D. Keene, Lab Director/Quality Manager



PHONE (575) 393-2326 ° 101 E. MARLAND ° HOBBS, NM 88240

Analytical Results For:

BBC International, Inc.
P.O. Box 805
Hobbs NM, 88241

Project: MESQUITE MOUTRAY SWD
Project Number: 6/26/2019
Project Manager: Cliff Brunson
Fax To: (575) 397-0397

Reported:
18-Oct-19 11:44

SP 1 @ 3'
H903469-04 (Soil)

Analyte	Result	MDL	Reporting Limit	Units	Dilution	Batch	Analyst	Analyzed	Method	Notes
---------	--------	-----	-----------------	-------	----------	-------	---------	----------	--------	-------

Cardinal Laboratories**Inorganic Compounds**

Chloride	112		16.0	mg/kg	4	9101521	AC	16-Oct-19	4500-Cl-B	
-----------------	------------	--	------	-------	---	---------	----	-----------	-----------	--

Cardinal Laboratories

*=Accredited Analyte

PLEASE NOTE: Liability and Damages. Cardinal's liability and client's exclusive remedy for any claim arising, whether based in contract or tort, shall be limited to the amount paid by client for analyses. All claims, including those for negligence or any other cause whatsoever shall be deemed waived unless made in writing and received by Cardinal within thirty (30) days after completion of the applicable service. In no event shall Cardinal be liable for incidental or consequential damage including, without limitation, business interruptions, loss of use, or loss of profits incurred by client, its subsidiaries, affiliates or successors arising out of or related to the performance of the services hereunder by Cardinal, regardless of whether such claim is based upon any of the above stated reasons or otherwise. Results relate only to the samples identified above. This report shall not be reproduced except in full with written approval of Cardinal Laboratories.

Celey D. Keene, Lab Director/Quality Manager



PHONE (575) 393-2326 ° 101 E. MARLAND ° HOBBS, NM 88240

Analytical Results For:

BBC International, Inc.
P.O. Box 805
Hobbs NM, 88241

Project: MESQUITE MOUTRAY SWD
Project Number: 6/26/2019
Project Manager: Cliff Brunson
Fax To: (575) 397-0397

Reported:
18-Oct-19 11:44

SP 1 @ 4'
H903469-05 (Soil)

Analyte	Result	MDL	Reporting Limit	Units	Dilution	Batch	Analyst	Analyzed	Method	Notes
---------	--------	-----	-----------------	-------	----------	-------	---------	----------	--------	-------

Cardinal Laboratories**Inorganic Compounds**

Chloride	160		16.0	mg/kg	4	9101521	AC	16-Oct-19	4500-Cl-B	
-----------------	------------	--	------	-------	---	---------	----	-----------	-----------	--

Cardinal Laboratories

*=Accredited Analyte

PLEASE NOTE: Liability and Damages. Cardinal's liability and client's exclusive remedy for any claim arising, whether based in contract or tort, shall be limited to the amount paid by client for analyses. All claims, including those for negligence or any other cause whatsoever shall be deemed waived unless made in writing and received by Cardinal within thirty (30) days after completion of the applicable service. In no event shall Cardinal be liable for incidental or consequential damage including, without limitation, business interruptions, loss of use, or loss of profits incurred by client, its subsidiaries, affiliates or successors arising out of or related to the performance of the services hereunder by Cardinal, regardless of whether such claim is based upon any of the above stated reasons or otherwise. Results relate only to the samples identified above. This report shall not be reproduced except in full with written approval of Cardinal Laboratories.

Celey D. Keene, Lab Director/Quality Manager



PHONE (575) 393-2326 ° 101 E. MARLAND ° HOBBS, NM 88240

Analytical Results For:

BBC International, Inc.
P.O. Box 805
Hobbs NM, 88241

Project: MESQUITE MOUTRAY SWD
Project Number: 6/26/2019
Project Manager: Cliff Brunson
Fax To: (575) 397-0397

Reported:
18-Oct-19 11:44

SP 2 @ SURFACE
H903469-06 (Soil)

Analyte	Result	MDL	Reporting Limit	Units	Dilution	Batch	Analyst	Analyzed	Method	Notes
---------	--------	-----	-----------------	-------	----------	-------	---------	----------	--------	-------

Cardinal Laboratories**Inorganic Compounds**

Chloride	1840		16.0	mg/kg	4	9101521	AC	16-Oct-19	4500-Cl-B	
-----------------	-------------	--	------	-------	---	---------	----	-----------	-----------	--

Volatile Organic Compounds by EPA Method 8021

Benzene*	<0.050	0.050	mg/kg	50	9101404	BF	15-Oct-19	8021B	
Toluene*	<0.050	0.050	mg/kg	50	9101404	BF	15-Oct-19	8021B	
Ethylbenzene*	<0.050	0.050	mg/kg	50	9101404	BF	15-Oct-19	8021B	
Total Xylenes*	<0.150	0.150	mg/kg	50	9101404	BF	15-Oct-19	8021B	
Total BTEX	<0.300	0.300	mg/kg	50	9101404	BF	15-Oct-19	8021B	

Surrogate: 4-Bromofluorobenzene (PID)		101 %	73.3-129		9101404	BF	15-Oct-19	8021B	
---------------------------------------	--	-------	----------	--	---------	----	-----------	-------	--

Petroleum Hydrocarbons by GC FID

GRO C6-C10*	<10.0	10.0	mg/kg	1	9101413	MS	15-Oct-19	8015B	
DRO >C10-C28*	<10.0	10.0	mg/kg	1	9101413	MS	15-Oct-19	8015B	
EXT DRO >C28-C36	<10.0	10.0	mg/kg	1	9101413	MS	15-Oct-19	8015B	

Surrogate: 1-Chlorooctane		103 %	41-142		9101413	MS	15-Oct-19	8015B	
---------------------------	--	-------	--------	--	---------	----	-----------	-------	--

Surrogate: 1-Chlorooctadecane		99.8 %	37.6-147		9101413	MS	15-Oct-19	8015B	
-------------------------------	--	--------	----------	--	---------	----	-----------	-------	--

Cardinal Laboratories

*=Accredited Analyte

PLEASE NOTE: Liability and Damages. Cardinal's liability and client's exclusive remedy for any claim arising, whether based in contract or tort, shall be limited to the amount paid by client for analyses. All claims, including those for negligence or any other cause whatsoever shall be deemed waived unless made in writing and received by Cardinal within thirty (30) days after completion of the applicable service. In no event shall Cardinal be liable for incidental or consequential damage including, without limitation, business interruptions, loss of use, or loss of profits incurred by client, its subsidiaries, affiliates or successors arising out of or related to the performance of the services hereunder by Cardinal, regardless of whether such claim is based upon any of the above stated reasons or otherwise. Results relate only to the samples identified above. This report shall not be reproduced except in full with written approval of Cardinal Laboratories.

Celey D. Keene, Lab Director/Quality Manager



PHONE (575) 393-2326 ° 101 E. MARLAND ° HOBBS, NM 88240

Analytical Results For:

BBC International, Inc.
P.O. Box 805
Hobbs NM, 88241

Project: MESQUITE MOUTRAY SWD
Project Number: 6/26/2019
Project Manager: Cliff Brunson
Fax To: (575) 397-0397

Reported:
18-Oct-19 11:44

SP 2 @ 1'
H903469-07 (Soil)

Analyte	Result	MDL	Reporting Limit	Units	Dilution	Batch	Analyst	Analyzed	Method	Notes
---------	--------	-----	-----------------	-------	----------	-------	---------	----------	--------	-------

Cardinal Laboratories**Inorganic Compounds**

Chloride	2640		16.0	mg/kg	4	9101521	AC	16-Oct-19	4500-Cl-B	
-----------------	-------------	--	------	-------	---	---------	----	-----------	-----------	--

Volatile Organic Compounds by EPA Method 8021

Benzene*	<0.050	0.050	mg/kg	50	9101404	BF	15-Oct-19	8021B	
Toluene*	<0.050	0.050	mg/kg	50	9101404	BF	15-Oct-19	8021B	
Ethylbenzene*	<0.050	0.050	mg/kg	50	9101404	BF	15-Oct-19	8021B	
Total Xylenes*	<0.150	0.150	mg/kg	50	9101404	BF	15-Oct-19	8021B	
Total BTEX	<0.300	0.300	mg/kg	50	9101404	BF	15-Oct-19	8021B	

<i>Surrogate: 4-Bromofluorobenzene (PID)</i>		99.6 %		73.3-129	9101404	BF	15-Oct-19	8021B	
--	--	--------	--	----------	---------	----	-----------	-------	--

Petroleum Hydrocarbons by GC FID

GRO C6-C10*	<10.0	10.0	mg/kg	1	9101501	MS	15-Oct-19	8015B	
DRO >C10-C28*	<10.0	10.0	mg/kg	1	9101501	MS	15-Oct-19	8015B	
EXT DRO >C28-C36	<10.0	10.0	mg/kg	1	9101501	MS	15-Oct-19	8015B	

<i>Surrogate: 1-Chlorooctane</i>		86.7 %		41-142	9101501	MS	15-Oct-19	8015B	
----------------------------------	--	--------	--	--------	---------	----	-----------	-------	--

<i>Surrogate: 1-Chlorooctadecane</i>		91.0 %		37.6-147	9101501	MS	15-Oct-19	8015B	
--------------------------------------	--	--------	--	----------	---------	----	-----------	-------	--

Cardinal Laboratories

*=Accredited Analyte

PLEASE NOTE: Liability and Damages. Cardinal's liability and client's exclusive remedy for any claim arising, whether based in contract or tort, shall be limited to the amount paid by client for analyses. All claims, including those for negligence or any other cause whatsoever shall be deemed waived unless made in writing and received by Cardinal within thirty (30) days after completion of the applicable service. In no event shall Cardinal be liable for incidental or consequential damage including, without limitation, business interruptions, loss of use, or loss of profits incurred by client, its subsidiaries, affiliates or successors arising out of or related to the performance of the services hereunder by Cardinal, regardless of whether such claim is based upon any of the above stated reasons or otherwise. Results relate only to the samples identified above. This report shall not be reproduced except in full with written approval of Cardinal Laboratories.

Celey D. Keene, Lab Director/Quality Manager



PHONE (575) 393-2326 ° 101 E. MARLAND ° HOBBS, NM 88240

Analytical Results For:

BBC International, Inc.
P.O. Box 805
Hobbs NM, 88241

Project: MESQUITE MOUTRAY SWD
Project Number: 6/26/2019
Project Manager: Cliff Brunson
Fax To: (575) 397-0397

Reported:
18-Oct-19 11:44

SP 2 @ 2'
H903469-08 (Soil)

Analyte	Result	MDL	Reporting Limit	Units	Dilution	Batch	Analyst	Analyzed	Method	Notes
---------	--------	-----	-----------------	-------	----------	-------	---------	----------	--------	-------

Cardinal Laboratories**Inorganic Compounds**

Chloride	1170		16.0	mg/kg	4	9101521	AC	16-Oct-19	4500-Cl-B	
-----------------	-------------	--	------	-------	---	---------	----	-----------	-----------	--

Cardinal Laboratories

*=Accredited Analyte

PLEASE NOTE: Liability and Damages. Cardinal's liability and client's exclusive remedy for any claim arising, whether based in contract or tort, shall be limited to the amount paid by client for analyses. All claims, including those for negligence or any other cause whatsoever shall be deemed waived unless made in writing and received by Cardinal within thirty (30) days after completion of the applicable service. In no event shall Cardinal be liable for incidental or consequential damage including, without limitation, business interruptions, loss of use, or loss of profits incurred by client, its subsidiaries, affiliates or successors arising out of or related to the performance of the services hereunder by Cardinal, regardless of whether such claim is based upon any of the above stated reasons or otherwise. Results relate only to the samples identified above. This report shall not be reproduced except in full with written approval of Cardinal Laboratories.

Celey D. Keene, Lab Director/Quality Manager



PHONE (575) 393-2326 ° 101 E. MARLAND ° HOBBS, NM 88240

Analytical Results For:

BBC International, Inc.
P.O. Box 805
Hobbs NM, 88241

Project: MESQUITE MOUTRAY SWD
Project Number: 6/26/2019
Project Manager: Cliff Brunson
Fax To: (575) 397-0397

Reported:
18-Oct-19 11:44

SP 2 @ 3'
H903469-09 (Soil)

Analyte	Result	MDL	Reporting Limit	Units	Dilution	Batch	Analyst	Analyzed	Method	Notes
---------	--------	-----	-----------------	-------	----------	-------	---------	----------	--------	-------

Cardinal Laboratories**Inorganic Compounds**

Chloride	144		16.0	mg/kg	4	9101521	AC	16-Oct-19	4500-Cl-B	
-----------------	------------	--	------	-------	---	---------	----	-----------	-----------	--

Cardinal Laboratories

*=Accredited Analyte

PLEASE NOTE: Liability and Damages. Cardinal's liability and client's exclusive remedy for any claim arising, whether based in contract or tort, shall be limited to the amount paid by client for analyses. All claims, including those for negligence or any other cause whatsoever shall be deemed waived unless made in writing and received by Cardinal within thirty (30) days after completion of the applicable service. In no event shall Cardinal be liable for incidental or consequential damage including, without limitation, business interruptions, loss of use, or loss of profits incurred by client, its subsidiaries, affiliates or successors arising out of or related to the performance of the services hereunder by Cardinal, regardless of whether such claim is based upon any of the above stated reasons or otherwise. Results relate only to the samples identified above. This report shall not be reproduced except in full with written approval of Cardinal Laboratories.

Celey D. Keene, Lab Director/Quality Manager



PHONE (575) 393-2326 ° 101 E. MARLAND ° HOBBS, NM 88240

Analytical Results For:

BBC International, Inc.
P.O. Box 805
Hobbs NM, 88241

Project: MESQUITE MOUTRAY SWD
Project Number: 6/26/2019
Project Manager: Cliff Brunson
Fax To: (575) 397-0397

Reported:
18-Oct-19 11:44

SP 2 @ 4'
H903469-10 (Soil)

Analyte	Result	MDL	Reporting Limit	Units	Dilution	Batch	Analyst	Analyzed	Method	Notes
---------	--------	-----	-----------------	-------	----------	-------	---------	----------	--------	-------

Cardinal Laboratories**Inorganic Compounds**

Chloride	144		16.0	mg/kg	4	9101521	AC	16-Oct-19	4500-Cl-B	
-----------------	------------	--	------	-------	---	---------	----	-----------	-----------	--

Cardinal Laboratories

*=Accredited Analyte

PLEASE NOTE: Liability and Damages. Cardinal's liability and client's exclusive remedy for any claim arising, whether based in contract or tort, shall be limited to the amount paid by client for analyses. All claims, including those for negligence or any other cause whatsoever shall be deemed waived unless made in writing and received by Cardinal within thirty (30) days after completion of the applicable service. In no event shall Cardinal be liable for incidental or consequential damage including, without limitation, business interruptions, loss of use, or loss of profits incurred by client, its subsidiaries, affiliates or successors arising out of or related to the performance of the services hereunder by Cardinal, regardless of whether such claim is based upon any of the above stated reasons or otherwise. Results relate only to the samples identified above. This report shall not be reproduced except in full with written approval of Cardinal Laboratories.

Celey D. Keene, Lab Director/Quality Manager



PHONE (575) 393-2326 ° 101 E. MARLAND ° HOBBS, NM 88240

Analytical Results For:

BBC International, Inc.
P.O. Box 805
Hobbs NM, 88241

Project: MESQUITE MOUTRAY SWD
Project Number: 6/26/2019
Project Manager: Cliff Brunson
Fax To: (575) 397-0397

Reported:
18-Oct-19 11:44

SP 3 @ SURFACE
H903469-11 (Soil)

Analyte	Result	MDL	Reporting Limit	Units	Dilution	Batch	Analyst	Analyzed	Method	Notes
---------	--------	-----	-----------------	-------	----------	-------	---------	----------	--------	-------

Cardinal Laboratories**Inorganic Compounds**

Chloride	1150		16.0	mg/kg	4	9101521	AC	16-Oct-19	4500-Cl-B	
-----------------	-------------	--	------	-------	---	---------	----	-----------	-----------	--

Volatile Organic Compounds by EPA Method 8021

Benzene*	<0.050	0.050	mg/kg	50	9101404	BF	15-Oct-19	8021B	
Toluene*	<0.050	0.050	mg/kg	50	9101404	BF	15-Oct-19	8021B	
Ethylbenzene*	<0.050	0.050	mg/kg	50	9101404	BF	15-Oct-19	8021B	
Total Xylenes*	<0.150	0.150	mg/kg	50	9101404	BF	15-Oct-19	8021B	
Total BTEX	<0.300	0.300	mg/kg	50	9101404	BF	15-Oct-19	8021B	

Surrogate: 4-Bromofluorobenzene (PID)		99.8 %		73.3-129	9101404	BF	15-Oct-19	8021B	
---------------------------------------	--	--------	--	----------	---------	----	-----------	-------	--

Petroleum Hydrocarbons by GC FID

GRO C6-C10*	<10.0	10.0	mg/kg	1	9101501	MS	15-Oct-19	8015B	
DRO >C10-C28*	<10.0	10.0	mg/kg	1	9101501	MS	15-Oct-19	8015B	
EXT DRO >C28-C36	<10.0	10.0	mg/kg	1	9101501	MS	15-Oct-19	8015B	

Surrogate: 1-Chlorooctane		87.6 %		41-142	9101501	MS	15-Oct-19	8015B	
---------------------------	--	--------	--	--------	---------	----	-----------	-------	--

Surrogate: 1-Chlorooctadecane		90.9 %		37.6-147	9101501	MS	15-Oct-19	8015B	
-------------------------------	--	--------	--	----------	---------	----	-----------	-------	--

Cardinal Laboratories

*=Accredited Analyte

PLEASE NOTE: Liability and Damages. Cardinal's liability and client's exclusive remedy for any claim arising, whether based in contract or tort, shall be limited to the amount paid by client for analyses. All claims, including those for negligence or any other cause whatsoever shall be deemed waived unless made in writing and received by Cardinal within thirty (30) days after completion of the applicable service. In no event shall Cardinal be liable for incidental or consequential damage including, without limitation, business interruptions, loss of use, or loss of profits incurred by client, its subsidiaries, affiliates or successors arising out of or related to the performance of the services hereunder by Cardinal, regardless of whether such claim is based upon any of the above stated reasons or otherwise. Results relate only to the samples identified above. This report shall not be reproduced except in full with written approval of Cardinal Laboratories.

Celey D. Keene, Lab Director/Quality Manager



PHONE (575) 393-2326 ° 101 E. MARLAND ° HOBBS, NM 88240

Analytical Results For:

BBC International, Inc.
P.O. Box 805
Hobbs NM, 88241

Project: MESQUITE MOUTRAY SWD
Project Number: 6/26/2019
Project Manager: Cliff Brunson
Fax To: (575) 397-0397

Reported:
18-Oct-19 11:44

SP 3 @ 1'
H903469-12 (Soil)

Analyte	Result	MDL	Reporting Limit	Units	Dilution	Batch	Analyst	Analyzed	Method	Notes
---------	--------	-----	-----------------	-------	----------	-------	---------	----------	--------	-------

Cardinal Laboratories**Inorganic Compounds**

Chloride	3000		16.0	mg/kg	4	9101521	AC	16-Oct-19	4500-Cl-B	
-----------------	-------------	--	------	-------	---	---------	----	-----------	-----------	--

Volatile Organic Compounds by EPA Method 8021

Benzene*	<0.050	0.050	mg/kg	50	9101404	BF	15-Oct-19	8021B	
Toluene*	<0.050	0.050	mg/kg	50	9101404	BF	15-Oct-19	8021B	
Ethylbenzene*	<0.050	0.050	mg/kg	50	9101404	BF	15-Oct-19	8021B	
Total Xylenes*	<0.150	0.150	mg/kg	50	9101404	BF	15-Oct-19	8021B	
Total BTEX	<0.300	0.300	mg/kg	50	9101404	BF	15-Oct-19	8021B	

Surrogate: 4-Bromofluorobenzene (PID)		101 %		73.3-129	9101404	BF	15-Oct-19	8021B	
---------------------------------------	--	-------	--	----------	---------	----	-----------	-------	--

Petroleum Hydrocarbons by GC FID

GRO C6-C10*	<10.0	10.0	mg/kg	1	9101501	MS	15-Oct-19	8015B	
DRO >C10-C28*	<10.0	10.0	mg/kg	1	9101501	MS	15-Oct-19	8015B	
EXT DRO >C28-C36	<10.0	10.0	mg/kg	1	9101501	MS	15-Oct-19	8015B	

Surrogate: 1-Chlorooctane		88.7 %		41-142	9101501	MS	15-Oct-19	8015B	
---------------------------	--	--------	--	--------	---------	----	-----------	-------	--

Surrogate: 1-Chlorooctadecane		92.0 %		37.6-147	9101501	MS	15-Oct-19	8015B	
-------------------------------	--	--------	--	----------	---------	----	-----------	-------	--

Cardinal Laboratories

*=Accredited Analyte

PLEASE NOTE: Liability and Damages. Cardinal's liability and client's exclusive remedy for any claim arising, whether based in contract or tort, shall be limited to the amount paid by client for analyses. All claims, including those for negligence or any other cause whatsoever shall be deemed waived unless made in writing and received by Cardinal within thirty (30) days after completion of the applicable service. In no event shall Cardinal be liable for incidental or consequential damage including, without limitation, business interruptions, loss of use, or loss of profits incurred by client, its subsidiaries, affiliates or successors arising out of or related to the performance of the services hereunder by Cardinal, regardless of whether such claim is based upon any of the above stated reasons or otherwise. Results relate only to the samples identified above. This report shall not be reproduced except in full with written approval of Cardinal Laboratories.

Celey D. Keene, Lab Director/Quality Manager



PHONE (575) 393-2326 ° 101 E. MARLAND ° HOBBS, NM 88240

Analytical Results For:

BBC International, Inc.
P.O. Box 805
Hobbs NM, 88241

Project: MESQUITE MOUTRAY SWD
Project Number: 6/26/2019
Project Manager: Cliff Brunson
Fax To: (575) 397-0397

Reported:
18-Oct-19 11:44

SP 3 @ 2'
H903469-13 (Soil)

Analyte	Result	MDL	Reporting Limit	Units	Dilution	Batch	Analyst	Analyzed	Method	Notes
---------	--------	-----	--------------------	-------	----------	-------	---------	----------	--------	-------

Cardinal Laboratories**Inorganic Compounds**

Analyte	Result	MDL	Reporting Limit	Units	Dilution	Batch	Analyst	Analyzed	Method	Notes
Chloride	4160		16.0	mg/kg	4	9101521	AC	16-Oct-19	4500-Cl-B	

Cardinal Laboratories

*=Accredited Analyte

PLEASE NOTE: Liability and Damages. Cardinal's liability and client's exclusive remedy for any claim arising, whether based in contract or tort, shall be limited to the amount paid by client for analyses. All claims, including those for negligence or any other cause whatsoever shall be deemed waived unless made in writing and received by Cardinal within thirty (30) days after completion of the applicable service. In no event shall Cardinal be liable for incidental or consequential damage including, without limitation, business interruptions, loss of use, or loss of profits incurred by client, its subsidiaries, affiliates or successors arising out of or related to the performance of the services hereunder by Cardinal, regardless of whether such claim is based upon any of the above stated reasons or otherwise. Results relate only to the samples identified above. This report shall not be reproduced except in full with written approval of Cardinal Laboratories.

Celey D. Keene, Lab Director/Quality Manager



PHONE (575) 393-2326 ° 101 E. MARLAND ° HOBBS, NM 88240

Analytical Results For:

BBC International, Inc.
P.O. Box 805
Hobbs NM, 88241

Project: MESQUITE MOUTRAY SWD
Project Number: 6/26/2019
Project Manager: Cliff Brunson
Fax To: (575) 397-0397

Reported:
18-Oct-19 11:44

SP 3 @ 3'
H903469-14 (Soil)

Analyte	Result	MDL	Reporting Limit	Units	Dilution	Batch	Analyst	Analyzed	Method	Notes
---------	--------	-----	-----------------	-------	----------	-------	---------	----------	--------	-------

Cardinal Laboratories**Inorganic Compounds**

Chloride	3280		16.0	mg/kg	4	9101521	AC	16-Oct-19	4500-Cl-B	
-----------------	-------------	--	------	-------	---	---------	----	-----------	-----------	--

Cardinal Laboratories

*=Accredited Analyte

PLEASE NOTE: Liability and Damages. Cardinal's liability and client's exclusive remedy for any claim arising, whether based in contract or tort, shall be limited to the amount paid by client for analyses. All claims, including those for negligence or any other cause whatsoever shall be deemed waived unless made in writing and received by Cardinal within thirty (30) days after completion of the applicable service. In no event shall Cardinal be liable for incidental or consequential damage including, without limitation, business interruptions, loss of use, or loss of profits incurred by client, its subsidiaries, affiliates or successors arising out of or related to the performance of the services hereunder by Cardinal, regardless of whether such claim is based upon any of the above stated reasons or otherwise. Results relate only to the samples identified above. This report shall not be reproduced except in full with written approval of Cardinal Laboratories.

Celey D. Keene, Lab Director/Quality Manager



PHONE (575) 393-2326 ° 101 E. MARLAND ° HOBBS, NM 88240

Analytical Results For:

BBC International, Inc.
P.O. Box 805
Hobbs NM, 88241

Project: MESQUITE MOUTRAY SWD
Project Number: 6/26/2019
Project Manager: Cliff Brunson
Fax To: (575) 397-0397

Reported:
18-Oct-19 11:44

SP 3 @ 4'
H903469-15 (Soil)

Analyte	Result	MDL	Reporting Limit	Units	Dilution	Batch	Analyst	Analyzed	Method	Notes
---------	--------	-----	-----------------	-------	----------	-------	---------	----------	--------	-------

Cardinal Laboratories**Inorganic Compounds**

Chloride	5680		16.0	mg/kg	4	9101521	AC	16-Oct-19	4500-Cl-B	
-----------------	-------------	--	------	-------	---	---------	----	-----------	-----------	--

Cardinal Laboratories

*=Accredited Analyte

PLEASE NOTE: Liability and Damages. Cardinal's liability and client's exclusive remedy for any claim arising, whether based in contract or tort, shall be limited to the amount paid by client for analyses. All claims, including those for negligence or any other cause whatsoever shall be deemed waived unless made in writing and received by Cardinal within thirty (30) days after completion of the applicable service. In no event shall Cardinal be liable for incidental or consequential damage including, without limitation, business interruptions, loss of use, or loss of profits incurred by client, its subsidiaries, affiliates or successors arising out of or related to the performance of the services hereunder by Cardinal, regardless of whether such claim is based upon any of the above stated reasons or otherwise. Results relate only to the samples identified above. This report shall not be reproduced except in full with written approval of Cardinal Laboratories.

Celey D. Keene, Lab Director/Quality Manager



PHONE (575) 393-2326 ° 101 E. MARLAND ° HOBBS, NM 88240

Analytical Results For:

BBC International, Inc.
P.O. Box 805
Hobbs NM, 88241

Project: MESQUITE MOUTRAY SWD
Project Number: 6/26/2019
Project Manager: Cliff Brunson
Fax To: (575) 397-0397

Reported:
18-Oct-19 11:44

SP 3 @ 5'
H903469-16 (Soil)

Analyte	Result	MDL	Reporting Limit	Units	Dilution	Batch	Analyst	Analyzed	Method	Notes
---------	--------	-----	-----------------	-------	----------	-------	---------	----------	--------	-------

Cardinal Laboratories**Inorganic Compounds**

Chloride	5600		16.0	mg/kg	4	9101521	AC	16-Oct-19	4500-Cl-B	
-----------------	-------------	--	------	-------	---	---------	----	-----------	-----------	--

Cardinal Laboratories

*=Accredited Analyte

PLEASE NOTE: Liability and Damages. Cardinal's liability and client's exclusive remedy for any claim arising, whether based in contract or tort, shall be limited to the amount paid by client for analyses. All claims, including those for negligence or any other cause whatsoever shall be deemed waived unless made in writing and received by Cardinal within thirty (30) days after completion of the applicable service. In no event shall Cardinal be liable for incidental or consequential damage including, without limitation, business interruptions, loss of use, or loss of profits incurred by client, its subsidiaries, affiliates or successors arising out of or related to the performance of the services hereunder by Cardinal, regardless of whether such claim is based upon any of the above stated reasons or otherwise. Results relate only to the samples identified above. This report shall not be reproduced except in full with written approval of Cardinal Laboratories.

Celey D. Keene, Lab Director/Quality Manager



PHONE (575) 393-2326 ° 101 E. MARLAND ° HOBBS, NM 88240

Analytical Results For:

BBC International, Inc.
P.O. Box 805
Hobbs NM, 88241

Project: MESQUITE MOUTRAY SWD
Project Number: 6/26/2019
Project Manager: Cliff Brunson
Fax To: (575) 397-0397

Reported:
18-Oct-19 11:44

SP 3 @ 6'
H903469-17 (Soil)

Analyte	Result	MDL	Reporting Limit	Units	Dilution	Batch	Analyst	Analyzed	Method	Notes
---------	--------	-----	-----------------	-------	----------	-------	---------	----------	--------	-------

Cardinal Laboratories**Inorganic Compounds**

Chloride	1330		16.0	mg/kg	4	9101606	AC	16-Oct-19	4500-Cl-B	QM-07
----------	------	--	------	-------	---	---------	----	-----------	-----------	-------

Cardinal Laboratories

*=Accredited Analyte

PLEASE NOTE: Liability and Damages. Cardinal's liability and client's exclusive remedy for any claim arising, whether based in contract or tort, shall be limited to the amount paid by client for analyses. All claims, including those for negligence or any other cause whatsoever shall be deemed waived unless made in writing and received by Cardinal within thirty (30) days after completion of the applicable service. In no event shall Cardinal be liable for incidental or consequential damage including, without limitation, business interruptions, loss of use, or loss of profits incurred by client, its subsidiaries, affiliates or successors arising out of or related to the performance of the services hereunder by Cardinal, regardless of whether such claim is based upon any of the above stated reasons or otherwise. Results relate only to the samples identified above. This report shall not be reproduced except in full with written approval of Cardinal Laboratories.

Celey D. Keene, Lab Director/Quality Manager



PHONE (575) 393-2326 ° 101 E. MARLAND ° HOBBS, NM 88240

Analytical Results For:

BBC International, Inc.
P.O. Box 805
Hobbs NM, 88241

Project: MESQUITE MOUTRAY SWD
Project Number: 6/26/2019
Project Manager: Cliff Brunson
Fax To: (575) 397-0397

Reported:
18-Oct-19 11:44

SP 3 @ 7'
H903469-18 (Soil)

Analyte	Result	MDL	Reporting Limit	Units	Dilution	Batch	Analyst	Analyzed	Method	Notes
---------	--------	-----	-----------------	-------	----------	-------	---------	----------	--------	-------

Cardinal Laboratories**Inorganic Compounds**

Analyte	Result	MDL	Reporting Limit	Units	Dilution	Batch	Analyst	Analyzed	Method	Notes
Chloride	32.0		16.0	mg/kg	4	9101606	AC	16-Oct-19	4500-Cl-B	

Cardinal Laboratories

*=Accredited Analyte

PLEASE NOTE: Liability and Damages. Cardinal's liability and client's exclusive remedy for any claim arising, whether based in contract or tort, shall be limited to the amount paid by client for analyses. All claims, including those for negligence or any other cause whatsoever shall be deemed waived unless made in writing and received by Cardinal within thirty (30) days after completion of the applicable service. In no event shall Cardinal be liable for incidental or consequential damage including, without limitation, business interruptions, loss of use, or loss of profits incurred by client, its subsidiaries, affiliates or successors arising out of or related to the performance of the services hereunder by Cardinal, regardless of whether such claim is based upon any of the above stated reasons or otherwise. Results relate only to the samples identified above. This report shall not be reproduced except in full with written approval of Cardinal Laboratories.

Celey D. Keene, Lab Director/Quality Manager



PHONE (575) 393-2326 ° 101 E. MARLAND ° HOBBS, NM 88240

Analytical Results For:

BBC International, Inc.
P.O. Box 805
Hobbs NM, 88241

Project: MESQUITE MOUTRAY SWD
Project Number: 6/26/2019
Project Manager: Cliff Brunson
Fax To: (575) 397-0397

Reported:
18-Oct-19 11:44

SP 3 @ 8'
H903469-19 (Soil)

Analyte	Result	MDL	Reporting Limit	Units	Dilution	Batch	Analyst	Analyzed	Method	Notes
---------	--------	-----	-----------------	-------	----------	-------	---------	----------	--------	-------

Cardinal Laboratories**Inorganic Compounds**

Chloride	<16.0		16.0	mg/kg	4	9101606	AC	16-Oct-19	4500-Cl-B	
----------	-------	--	------	-------	---	---------	----	-----------	-----------	--

Cardinal Laboratories

*=Accredited Analyte

PLEASE NOTE: Liability and Damages. Cardinal's liability and client's exclusive remedy for any claim arising, whether based in contract or tort, shall be limited to the amount paid by client for analyses. All claims, including those for negligence or any other cause whatsoever shall be deemed waived unless made in writing and received by Cardinal within thirty (30) days after completion of the applicable service. In no event shall Cardinal be liable for incidental or consequential damage including, without limitation, business interruptions, loss of use, or loss of profits incurred by client, its subsidiaries, affiliates or successors arising out of or related to the performance of the services hereunder by Cardinal, regardless of whether such claim is based upon any of the above stated reasons or otherwise. Results relate only to the samples identified above. This report shall not be reproduced except in full with written approval of Cardinal Laboratories.

Celey D. Keene, Lab Director/Quality Manager



PHONE (575) 393-2326 ° 101 E. MARLAND ° HOBBS, NM 88240

Analytical Results For:

BBC International, Inc.
P.O. Box 805
Hobbs NM, 88241

Project: MESQUITE MOUTRAY SWD
Project Number: 6/26/2019
Project Manager: Cliff Brunson
Fax To: (575) 397-0397

Reported:
18-Oct-19 11:44

SP 4 @ SURFACE
H903469-20 (Soil)

Analyte	Result	MDL	Reporting Limit	Units	Dilution	Batch	Analyst	Analyzed	Method	Notes
---------	--------	-----	-----------------	-------	----------	-------	---------	----------	--------	-------

Cardinal Laboratories**Inorganic Compounds**

Chloride	8530		16.0	mg/kg	4	9101606	AC	16-Oct-19	4500-Cl-B	
-----------------	-------------	--	------	-------	---	---------	----	-----------	-----------	--

Volatile Organic Compounds by EPA Method 8021

Benzene*	<0.050		0.050	mg/kg	50	9101404	BF	15-Oct-19	8021B	
Toluene*	<0.050		0.050	mg/kg	50	9101404	BF	15-Oct-19	8021B	
Ethylbenzene*	<0.050		0.050	mg/kg	50	9101404	BF	15-Oct-19	8021B	
Total Xylenes*	<0.150		0.150	mg/kg	50	9101404	BF	15-Oct-19	8021B	
Total BTEX	<0.300		0.300	mg/kg	50	9101404	BF	15-Oct-19	8021B	

Surrogate: 4-Bromofluorobenzene (PID) 99.8 % 73.3-129 9101404 BF 15-Oct-19 8021B

Petroleum Hydrocarbons by GC FID**S-04**

GRO C6-C10*	<10.0		10.0	mg/kg	1	9101501	MS	15-Oct-19	8015B	
DRO >C10-C28*	1420		10.0	mg/kg	1	9101501	MS	15-Oct-19	8015B	
EXT DRO >C28-C36	509		10.0	mg/kg	1	9101501	MS	15-Oct-19	8015B	

Surrogate: 1-Chlorooctane 93.2 % 41-142 9101501 MS 15-Oct-19 8015B

Surrogate: 1-Chlorooctadecane 154 % 37.6-147 9101501 MS 15-Oct-19 8015B

Cardinal Laboratories

*=Accredited Analyte

PLEASE NOTE: Liability and Damages. Cardinal's liability and client's exclusive remedy for any claim arising, whether based in contract or tort, shall be limited to the amount paid by client for analyses. All claims, including those for negligence or any other cause whatsoever shall be deemed waived unless made in writing and received by Cardinal within thirty (30) days after completion of the applicable service. In no event shall Cardinal be liable for incidental or consequential damage including, without limitation, business interruptions, loss of use, or loss of profits incurred by client, its subsidiaries, affiliates or successors arising out of or related to the performance of the services hereunder by Cardinal, regardless of whether such claim is based upon any of the above stated reasons or otherwise. Results relate only to the samples identified above. This report shall not be reproduced except in full with written approval of Cardinal Laboratories.

Celey D. Keene, Lab Director/Quality Manager



PHONE (575) 393-2326 ° 101 E. MARLAND ° HOBBS, NM 88240

Analytical Results For:

BBC International, Inc.
P.O. Box 805
Hobbs NM, 88241

Project: MESQUITE MOUTRAY SWD
Project Number: 6/26/2019
Project Manager: Cliff Brunson
Fax To: (575) 397-0397

Reported:
18-Oct-19 11:44

SP 4 @ 1'
H903469-21 (Soil)

Analyte	Result	MDL	Reporting Limit	Units	Dilution	Batch	Analyst	Analyzed	Method	Notes
---------	--------	-----	-----------------	-------	----------	-------	---------	----------	--------	-------

Cardinal Laboratories**Inorganic Compounds**

Chloride	2480		16.0	mg/kg	4	9101606	AC	16-Oct-19	4500-Cl-B	
-----------------	-------------	--	------	-------	---	---------	----	-----------	-----------	--

Volatile Organic Compounds by EPA Method 8021

Benzene*	<0.050	0.050	mg/kg	50	9101703	BF	17-Oct-19	8021B	
Toluene*	<0.050	0.050	mg/kg	50	9101703	BF	17-Oct-19	8021B	
Ethylbenzene*	<0.050	0.050	mg/kg	50	9101703	BF	17-Oct-19	8021B	
Total Xylenes*	<0.150	0.150	mg/kg	50	9101703	BF	17-Oct-19	8021B	
Total BTEX	<0.300	0.300	mg/kg	50	9101703	BF	17-Oct-19	8021B	

Surrogate: 4-Bromofluorobenzene (PID)		97.7 %		73.3-129	9101703	BF	17-Oct-19	8021B	
---------------------------------------	--	--------	--	----------	---------	----	-----------	-------	--

Petroleum Hydrocarbons by GC FID

GRO C6-C10*	<10.0	10.0	mg/kg	1	9101714	MS	17-Oct-19	8015B	
DRO >C10-C28*	<10.0	10.0	mg/kg	1	9101714	MS	17-Oct-19	8015B	
EXT DRO >C28-C36	<10.0	10.0	mg/kg	1	9101714	MS	17-Oct-19	8015B	

Surrogate: 1-Chlorooctane		105 %		41-142	9101714	MS	17-Oct-19	8015B	
---------------------------	--	-------	--	--------	---------	----	-----------	-------	--

Surrogate: 1-Chlorooctadecane		97.1 %		37.6-147	9101714	MS	17-Oct-19	8015B	
-------------------------------	--	--------	--	----------	---------	----	-----------	-------	--

Cardinal Laboratories

*=Accredited Analyte

PLEASE NOTE: Liability and Damages. Cardinal's liability and client's exclusive remedy for any claim arising, whether based in contract or tort, shall be limited to the amount paid by client for analyses. All claims, including those for negligence or any other cause whatsoever shall be deemed waived unless made in writing and received by Cardinal within thirty (30) days after completion of the applicable service. In no event shall Cardinal be liable for incidental or consequential damage including, without limitation, business interruptions, loss of use, or loss of profits incurred by client, its subsidiaries, affiliates or successors arising out of or related to the performance of the services hereunder by Cardinal, regardless of whether such claim is based upon any of the above stated reasons or otherwise. Results relate only to the samples identified above. This report shall not be reproduced except in full with written approval of Cardinal Laboratories.

Celey D. Keene, Lab Director/Quality Manager



PHONE (575) 393-2326 ° 101 E. MARLAND ° HOBBS, NM 88240

Analytical Results For:

BBC International, Inc.
P.O. Box 805
Hobbs NM, 88241

Project: MESQUITE MOUTRAY SWD
Project Number: 6/26/2019
Project Manager: Cliff Brunson
Fax To: (575) 397-0397

Reported:
18-Oct-19 11:44

SP 4 @ 2'
H903469-22 (Soil)

Analyte	Result	MDL	Reporting Limit	Units	Dilution	Batch	Analyst	Analyzed	Method	Notes
---------	--------	-----	-----------------	-------	----------	-------	---------	----------	--------	-------

Cardinal Laboratories**Inorganic Compounds**

Chloride	864		16.0	mg/kg	4	9101606	AC	16-Oct-19	4500-Cl-B	
-----------------	------------	--	------	-------	---	---------	----	-----------	-----------	--

Volatile Organic Compounds by EPA Method 8021

Benzene*	<0.050	0.050	mg/kg	50	9101701	BF	17-Oct-19	8021B	
Toluene*	<0.050	0.050	mg/kg	50	9101701	BF	17-Oct-19	8021B	
Ethylbenzene*	<0.050	0.050	mg/kg	50	9101701	BF	17-Oct-19	8021B	
Total Xylenes*	<0.150	0.150	mg/kg	50	9101701	BF	17-Oct-19	8021B	
Total BTEX	<0.300	0.300	mg/kg	50	9101701	BF	17-Oct-19	8021B	

Surrogate: 4-Bromofluorobenzene (PID)		97.9 %		73.3-129	9101701	BF	17-Oct-19	8021B	
---------------------------------------	--	--------	--	----------	---------	----	-----------	-------	--

Petroleum Hydrocarbons by GC FID

GRO C6-C10*	<10.0	10.0	mg/kg	1	9101714	MS	17-Oct-19	8015B	
DRO >C10-C28*	<10.0	10.0	mg/kg	1	9101714	MS	17-Oct-19	8015B	
EXT DRO >C28-C36	<10.0	10.0	mg/kg	1	9101714	MS	17-Oct-19	8015B	

Surrogate: 1-Chlorooctane		110 %		41-142	9101714	MS	17-Oct-19	8015B	
---------------------------	--	-------	--	--------	---------	----	-----------	-------	--

Surrogate: 1-Chlorooctadecane		102 %		37.6-147	9101714	MS	17-Oct-19	8015B	
-------------------------------	--	-------	--	----------	---------	----	-----------	-------	--

Cardinal Laboratories

*=Accredited Analyte

PLEASE NOTE: Liability and Damages. Cardinal's liability and client's exclusive remedy for any claim arising, whether based in contract or tort, shall be limited to the amount paid by client for analyses. All claims, including those for negligence or any other cause whatsoever shall be deemed waived unless made in writing and received by Cardinal within thirty (30) days after completion of the applicable service. In no event shall Cardinal be liable for incidental or consequential damage including, without limitation, business interruptions, loss of use, or loss of profits incurred by client, its subsidiaries, affiliates or successors arising out of or related to the performance of the services hereunder by Cardinal, regardless of whether such claim is based upon any of the above stated reasons or otherwise. Results relate only to the samples identified above. This report shall not be reproduced except in full with written approval of Cardinal Laboratories.

Celey D. Keene, Lab Director/Quality Manager



PHONE (575) 393-2326 ° 101 E. MARLAND ° HOBBS, NM 88240

Analytical Results For:

BBC International, Inc.
P.O. Box 805
Hobbs NM, 88241

Project: MESQUITE MOUTRAY SWD
Project Number: 6/26/2019
Project Manager: Cliff Brunson
Fax To: (575) 397-0397

Reported:
18-Oct-19 11:44

SP 4 @ 3'
H903469-23 (Soil)

Analyte	Result	MDL	Reporting Limit	Units	Dilution	Batch	Analyst	Analyzed	Method	Notes
---------	--------	-----	-----------------	-------	----------	-------	---------	----------	--------	-------

Cardinal Laboratories**Inorganic Compounds**

Chloride	2320		16.0	mg/kg	4	9101606	AC	16-Oct-19	4500-Cl-B	
-----------------	-------------	--	------	-------	---	---------	----	-----------	-----------	--

Cardinal Laboratories

*=Accredited Analyte

PLEASE NOTE: Liability and Damages. Cardinal's liability and client's exclusive remedy for any claim arising, whether based in contract or tort, shall be limited to the amount paid by client for analyses. All claims, including those for negligence or any other cause whatsoever shall be deemed waived unless made in writing and received by Cardinal within thirty (30) days after completion of the applicable service. In no event shall Cardinal be liable for incidental or consequential damage including, without limitation, business interruptions, loss of use, or loss of profits incurred by client, its subsidiaries, affiliates or successors arising out of or related to the performance of the services hereunder by Cardinal, regardless of whether such claim is based upon any of the above stated reasons or otherwise. Results relate only to the samples identified above. This report shall not be reproduced except in full with written approval of Cardinal Laboratories.

Celey D. Keene, Lab Director/Quality Manager



PHONE (575) 393-2326 ° 101 E. MARLAND ° HOBBS, NM 88240

Analytical Results For:

BBC International, Inc.
P.O. Box 805
Hobbs NM, 88241

Project: MESQUITE MOUTRAY SWD
Project Number: 6/26/2019
Project Manager: Cliff Brunson
Fax To: (575) 397-0397

Reported:
18-Oct-19 11:44

SP 4 @ 4'
H903469-24 (Soil)

Analyte	Result	MDL	Reporting Limit	Units	Dilution	Batch	Analyst	Analyzed	Method	Notes
---------	--------	-----	-----------------	-------	----------	-------	---------	----------	--------	-------

Cardinal Laboratories**Inorganic Compounds**

Chloride	1100		16.0	mg/kg	4	9101606	AC	16-Oct-19	4500-Cl-B	
-----------------	-------------	--	------	-------	---	---------	----	-----------	-----------	--

Cardinal Laboratories

*=Accredited Analyte

PLEASE NOTE: Liability and Damages. Cardinal's liability and client's exclusive remedy for any claim arising, whether based in contract or tort, shall be limited to the amount paid by client for analyses. All claims, including those for negligence or any other cause whatsoever shall be deemed waived unless made in writing and received by Cardinal within thirty (30) days after completion of the applicable service. In no event shall Cardinal be liable for incidental or consequential damage including, without limitation, business interruptions, loss of use, or loss of profits incurred by client, its subsidiaries, affiliates or successors arising out of or related to the performance of the services hereunder by Cardinal, regardless of whether such claim is based upon any of the above stated reasons or otherwise. Results relate only to the samples identified above. This report shall not be reproduced except in full with written approval of Cardinal Laboratories.

Celey D. Keene, Lab Director/Quality Manager



PHONE (575) 393-2326 ° 101 E. MARLAND ° HOBBS, NM 88240

Analytical Results For:

BBC International, Inc.
P.O. Box 805
Hobbs NM, 88241

Project: MESQUITE MOUTRAY SWD
Project Number: 6/26/2019
Project Manager: Cliff Brunson
Fax To: (575) 397-0397

Reported:
18-Oct-19 11:44

SP 4 @ 5'
H903469-25 (Soil)

Analyte	Result	MDL	Reporting Limit	Units	Dilution	Batch	Analyst	Analyzed	Method	Notes
---------	--------	-----	-----------------	-------	----------	-------	---------	----------	--------	-------

Cardinal Laboratories**Inorganic Compounds**

Analyte	Result	MDL	Reporting Limit	Units	Dilution	Batch	Analyst	Analyzed	Method	Notes
Chloride	32.0		16.0	mg/kg	4	9101606	AC	16-Oct-19	4500-Cl-B	

Cardinal Laboratories

*=Accredited Analyte

PLEASE NOTE: Liability and Damages. Cardinal's liability and client's exclusive remedy for any claim arising, whether based in contract or tort, shall be limited to the amount paid by client for analyses. All claims, including those for negligence or any other cause whatsoever shall be deemed waived unless made in writing and received by Cardinal within thirty (30) days after completion of the applicable service. In no event shall Cardinal be liable for incidental or consequential damage including, without limitation, business interruptions, loss of use, or loss of profits incurred by client, its subsidiaries, affiliates or successors arising out of or related to the performance of the services hereunder by Cardinal, regardless of whether such claim is based upon any of the above stated reasons or otherwise. Results relate only to the samples identified above. This report shall not be reproduced except in full with written approval of Cardinal Laboratories.

Celey D. Keene, Lab Director/Quality Manager



PHONE (575) 393-2326 ° 101 E. MARLAND ° HOBBS, NM 88240

Analytical Results For:

BBC International, Inc.
P.O. Box 805
Hobbs NM, 88241

Project: MESQUITE MOUTRAY SWD
Project Number: 6/26/2019
Project Manager: Cliff Brunson
Fax To: (575) 397-0397

Reported:
18-Oct-19 11:44

SP 4 @ 6'
H903469-26 (Soil)

Analyte	Result	MDL	Reporting Limit	Units	Dilution	Batch	Analyst	Analyzed	Method	Notes
---------	--------	-----	-----------------	-------	----------	-------	---------	----------	--------	-------

Cardinal Laboratories**Inorganic Compounds**

Chloride	<16.0		16.0	mg/kg	4	9101606	AC	16-Oct-19	4500-Cl-B	
----------	-------	--	------	-------	---	---------	----	-----------	-----------	--

Cardinal Laboratories

*=Accredited Analyte

PLEASE NOTE: Liability and Damages. Cardinal's liability and client's exclusive remedy for any claim arising, whether based in contract or tort, shall be limited to the amount paid by client for analyses. All claims, including those for negligence or any other cause whatsoever shall be deemed waived unless made in writing and received by Cardinal within thirty (30) days after completion of the applicable service. In no event shall Cardinal be liable for incidental or consequential damage including, without limitation, business interruptions, loss of use, or loss of profits incurred by client, its subsidiaries, affiliates or successors arising out of or related to the performance of the services hereunder by Cardinal, regardless of whether such claim is based upon any of the above stated reasons or otherwise. Results relate only to the samples identified above. This report shall not be reproduced except in full with written approval of Cardinal Laboratories.

Celey D. Keene, Lab Director/Quality Manager



PHONE (575) 393-2326 ° 101 E. MARLAND ° HOBBS, NM 88240

Analytical Results For:

BBC International, Inc.
P.O. Box 805
Hobbs NM, 88241

Project: MESQUITE MOUTRAY SWD
Project Number: 6/26/2019
Project Manager: Cliff Brunson
Fax To: (575) 397-0397

Reported:
18-Oct-19 11:44

SP 5 @ SURFACE
H903469-27 (Soil)

Analyte	Result	MDL	Reporting Limit	Units	Dilution	Batch	Analyst	Analyzed	Method	Notes
---------	--------	-----	-----------------	-------	----------	-------	---------	----------	--------	-------

Cardinal Laboratories**Inorganic Compounds**

Chloride	7060		16.0	mg/kg	4	9101606	AC	16-Oct-19	4500-Cl-B	
-----------------	-------------	--	------	-------	---	---------	----	-----------	-----------	--

Volatile Organic Compounds by EPA Method 8021

Benzene*	<0.050	0.050	mg/kg	50	9101404	BF	15-Oct-19	8021B	
Toluene*	<0.050	0.050	mg/kg	50	9101404	BF	15-Oct-19	8021B	
Ethylbenzene*	<0.050	0.050	mg/kg	50	9101404	BF	15-Oct-19	8021B	
Total Xylenes*	<0.150	0.150	mg/kg	50	9101404	BF	15-Oct-19	8021B	
Total BTEX	<0.300	0.300	mg/kg	50	9101404	BF	15-Oct-19	8021B	

<i>Surrogate: 4-Bromofluorobenzene (PID)</i>		100 %		73.3-129	9101404	BF	15-Oct-19	8021B	
--	--	-------	--	----------	---------	----	-----------	-------	--

Petroleum Hydrocarbons by GC FID

GRO C6-C10*	<10.0	10.0	mg/kg	1	9101501	MS	15-Oct-19	8015B	
DRO >C10-C28*	<10.0	10.0	mg/kg	1	9101501	MS	15-Oct-19	8015B	
EXT DRO >C28-C36	<10.0	10.0	mg/kg	1	9101501	MS	15-Oct-19	8015B	

<i>Surrogate: 1-Chlorooctane</i>		85.2 %		41-142	9101501	MS	15-Oct-19	8015B	
----------------------------------	--	--------	--	--------	---------	----	-----------	-------	--

<i>Surrogate: 1-Chlorooctadecane</i>		88.0 %		37.6-147	9101501	MS	15-Oct-19	8015B	
--------------------------------------	--	--------	--	----------	---------	----	-----------	-------	--

Cardinal Laboratories

*=Accredited Analyte

PLEASE NOTE: Liability and Damages. Cardinal's liability and client's exclusive remedy for any claim arising, whether based in contract or tort, shall be limited to the amount paid by client for analyses. All claims, including those for negligence or any other cause whatsoever shall be deemed waived unless made in writing and received by Cardinal within thirty (30) days after completion of the applicable service. In no event shall Cardinal be liable for incidental or consequential damage including, without limitation, business interruptions, loss of use, or loss of profits incurred by client, its subsidiaries, affiliates or successors arising out of or related to the performance of the services hereunder by Cardinal, regardless of whether such claim is based upon any of the above stated reasons or otherwise. Results relate only to the samples identified above. This report shall not be reproduced except in full with written approval of Cardinal Laboratories.

Celey D. Keene, Lab Director/Quality Manager



PHONE (575) 393-2326 ° 101 E. MARLAND ° HOBBS, NM 88240

Analytical Results For:

BBC International, Inc.
P.O. Box 805
Hobbs NM, 88241

Project: MESQUITE MOUTRAY SWD
Project Number: 6/26/2019
Project Manager: Cliff Brunson
Fax To: (575) 397-0397

Reported:
18-Oct-19 11:44

SP 5 @ 1'
H903469-28 (Soil)

Analyte	Result	MDL	Reporting Limit	Units	Dilution	Batch	Analyst	Analyzed	Method	Notes
---------	--------	-----	-----------------	-------	----------	-------	---------	----------	--------	-------

Cardinal Laboratories**Inorganic Compounds**

Chloride	4320		16.0	mg/kg	4	9101606	AC	16-Oct-19	4500-Cl-B	
-----------------	-------------	--	------	-------	---	---------	----	-----------	-----------	--

Volatile Organic Compounds by EPA Method 8021

Benzene*	<0.050	0.050	mg/kg	50	9101404	BF	15-Oct-19	8021B	
Toluene*	<0.050	0.050	mg/kg	50	9101404	BF	15-Oct-19	8021B	
Ethylbenzene*	<0.050	0.050	mg/kg	50	9101404	BF	15-Oct-19	8021B	
Total Xylenes*	<0.150	0.150	mg/kg	50	9101404	BF	15-Oct-19	8021B	
Total BTEX	<0.300	0.300	mg/kg	50	9101404	BF	15-Oct-19	8021B	

<i>Surrogate: 4-Bromofluorobenzene (PID)</i>		98.9 %		73.3-129	9101404	BF	15-Oct-19	8021B	
--	--	--------	--	----------	---------	----	-----------	-------	--

Petroleum Hydrocarbons by GC FID

GRO C6-C10*	<10.0	10.0	mg/kg	1	9101501	MS	15-Oct-19	8015B	
DRO >C10-C28*	<10.0	10.0	mg/kg	1	9101501	MS	15-Oct-19	8015B	
EXT DRO >C28-C36	<10.0	10.0	mg/kg	1	9101501	MS	15-Oct-19	8015B	

<i>Surrogate: 1-Chlorooctane</i>		87.7 %		41-142	9101501	MS	15-Oct-19	8015B	
----------------------------------	--	--------	--	--------	---------	----	-----------	-------	--

<i>Surrogate: 1-Chlorooctadecane</i>		90.2 %		37.6-147	9101501	MS	15-Oct-19	8015B	
--------------------------------------	--	--------	--	----------	---------	----	-----------	-------	--

Cardinal Laboratories

*=Accredited Analyte

PLEASE NOTE: Liability and Damages. Cardinal's liability and client's exclusive remedy for any claim arising, whether based in contract or tort, shall be limited to the amount paid by client for analyses. All claims, including those for negligence or any other cause whatsoever shall be deemed waived unless made in writing and received by Cardinal within thirty (30) days after completion of the applicable service. In no event shall Cardinal be liable for incidental or consequential damage including, without limitation, business interruptions, loss of use, or loss of profits incurred by client, its subsidiaries, affiliates or successors arising out of or related to the performance of the services hereunder by Cardinal, regardless of whether such claim is based upon any of the above stated reasons or otherwise. Results relate only to the samples identified above. This report shall not be reproduced except in full with written approval of Cardinal Laboratories.

Celey D. Keene, Lab Director/Quality Manager



PHONE (575) 393-2326 ° 101 E. MARLAND ° HOBBS, NM 88240

Analytical Results For:

BBC International, Inc.
P.O. Box 805
Hobbs NM, 88241

Project: MESQUITE MOUTRAY SWD
Project Number: 6/26/2019
Project Manager: Cliff Brunson
Fax To: (575) 397-0397

Reported:
18-Oct-19 11:44

SP 5 @ 2'
H903469-29 (Soil)

Analyte	Result	MDL	Reporting Limit	Units	Dilution	Batch	Analyst	Analyzed	Method	Notes
---------	--------	-----	-----------------	-------	----------	-------	---------	----------	--------	-------

Cardinal Laboratories**Inorganic Compounds**

Chloride	1020		16.0	mg/kg	4	9101606	AC	16-Oct-19	4500-Cl-B	
-----------------	-------------	--	------	-------	---	---------	----	-----------	-----------	--

Cardinal Laboratories

*=Accredited Analyte

PLEASE NOTE: Liability and Damages. Cardinal's liability and client's exclusive remedy for any claim arising, whether based in contract or tort, shall be limited to the amount paid by client for analyses. All claims, including those for negligence or any other cause whatsoever shall be deemed waived unless made in writing and received by Cardinal within thirty (30) days after completion of the applicable service. In no event shall Cardinal be liable for incidental or consequential damage including, without limitation, business interruptions, loss of use, or loss of profits incurred by client, its subsidiaries, affiliates or successors arising out of or related to the performance of the services hereunder by Cardinal, regardless of whether such claim is based upon any of the above stated reasons or otherwise. Results relate only to the samples identified above. This report shall not be reproduced except in full with written approval of Cardinal Laboratories.

Celey D. Keene, Lab Director/Quality Manager



PHONE (575) 393-2326 ° 101 E. MARLAND ° HOBBS, NM 88240

Analytical Results For:

BBC International, Inc.
P.O. Box 805
Hobbs NM, 88241

Project: MESQUITE MOUTRAY SWD
Project Number: 6/26/2019
Project Manager: Cliff Brunson
Fax To: (575) 397-0397

Reported:
18-Oct-19 11:44

SP 5 @ 3'
H903469-30 (Soil)

Analyte	Result	MDL	Reporting Limit	Units	Dilution	Batch	Analyst	Analyzed	Method	Notes
---------	--------	-----	-----------------	-------	----------	-------	---------	----------	--------	-------

Cardinal Laboratories**Inorganic Compounds**

Analyte	Result	MDL	Reporting Limit	Units	Dilution	Batch	Analyst	Analyzed	Method	Notes
Chloride	1300		16.0	mg/kg	4	9101606	AC	16-Oct-19	4500-Cl-B	

Cardinal Laboratories

*=Accredited Analyte

PLEASE NOTE: Liability and Damages. Cardinal's liability and client's exclusive remedy for any claim arising, whether based in contract or tort, shall be limited to the amount paid by client for analyses. All claims, including those for negligence or any other cause whatsoever shall be deemed waived unless made in writing and received by Cardinal within thirty (30) days after completion of the applicable service. In no event shall Cardinal be liable for incidental or consequential damage including, without limitation, business interruptions, loss of use, or loss of profits incurred by client, its subsidiaries, affiliates or successors arising out of or related to the performance of the services hereunder by Cardinal, regardless of whether such claim is based upon any of the above stated reasons or otherwise. Results relate only to the samples identified above. This report shall not be reproduced except in full with written approval of Cardinal Laboratories.

Celey D. Keene, Lab Director/Quality Manager



PHONE (575) 393-2326 ° 101 E. MARLAND ° HOBBS, NM 88240

Analytical Results For:

BBC International, Inc.
P.O. Box 805
Hobbs NM, 88241

Project: MESQUITE MOUTRAY SWD
Project Number: 6/26/2019
Project Manager: Cliff Brunson
Fax To: (575) 397-0397

Reported:
18-Oct-19 11:44

SP 5 @ 4'
H903469-31 (Soil)

Analyte	Result	MDL	Reporting Limit	Units	Dilution	Batch	Analyst	Analyzed	Method	Notes
---------	--------	-----	-----------------	-------	----------	-------	---------	----------	--------	-------

Cardinal Laboratories**Inorganic Compounds**

Chloride	608		16.0	mg/kg	4	9101606	AC	16-Oct-19	4500-Cl-B	
-----------------	------------	--	------	-------	---	---------	----	-----------	-----------	--

Cardinal Laboratories

*=Accredited Analyte

PLEASE NOTE: Liability and Damages. Cardinal's liability and client's exclusive remedy for any claim arising, whether based in contract or tort, shall be limited to the amount paid by client for analyses. All claims, including those for negligence or any other cause whatsoever shall be deemed waived unless made in writing and received by Cardinal within thirty (30) days after completion of the applicable service. In no event shall Cardinal be liable for incidental or consequential damage including, without limitation, business interruptions, loss of use, or loss of profits incurred by client, its subsidiaries, affiliates or successors arising out of or related to the performance of the services hereunder by Cardinal, regardless of whether such claim is based upon any of the above stated reasons or otherwise. Results relate only to the samples identified above. This report shall not be reproduced except in full with written approval of Cardinal Laboratories.

Celey D. Keene, Lab Director/Quality Manager



PHONE (575) 393-2326 ° 101 E. MARLAND ° HOBBS, NM 88240

Analytical Results For:

BBC International, Inc.
P.O. Box 805
Hobbs NM, 88241

Project: MESQUITE MOUTRAY SWD
Project Number: 6/26/2019
Project Manager: Cliff Brunson
Fax To: (575) 397-0397

Reported:
18-Oct-19 11:44

SP 5 @ 5'
H903469-32 (Soil)

Analyte	Result	MDL	Reporting Limit	Units	Dilution	Batch	Analyst	Analyzed	Method	Notes
---------	--------	-----	-----------------	-------	----------	-------	---------	----------	--------	-------

Cardinal Laboratories**Inorganic Compounds**

Chloride	32.0		16.0	mg/kg	4	9101606	AC	16-Oct-19	4500-Cl-B	
-----------------	-------------	--	------	-------	---	---------	----	-----------	-----------	--

Cardinal Laboratories

*=Accredited Analyte

PLEASE NOTE: Liability and Damages. Cardinal's liability and client's exclusive remedy for any claim arising, whether based in contract or tort, shall be limited to the amount paid by client for analyses. All claims, including those for negligence or any other cause whatsoever shall be deemed waived unless made in writing and received by Cardinal within thirty (30) days after completion of the applicable service. In no event shall Cardinal be liable for incidental or consequential damage including, without limitation, business interruptions, loss of use, or loss of profits incurred by client, its subsidiaries, affiliates or successors arising out of or related to the performance of the services hereunder by Cardinal, regardless of whether such claim is based upon any of the above stated reasons or otherwise. Results relate only to the samples identified above. This report shall not be reproduced except in full with written approval of Cardinal Laboratories.

Celey D. Keene, Lab Director/Quality Manager



PHONE (575) 393-2326 ° 101 E. MARLAND ° HOBBS, NM 88240

Analytical Results For:

BBC International, Inc.
P.O. Box 805
Hobbs NM, 88241

Project: MESQUITE MOUTRAY SWD
Project Number: 6/26/2019
Project Manager: Cliff Brunson
Fax To: (575) 397-0397

Reported:
18-Oct-19 11:44

SP 5 @ 6'
H903469-33 (Soil)

Analyte	Result	MDL	Reporting Limit	Units	Dilution	Batch	Analyst	Analyzed	Method	Notes
---------	--------	-----	-----------------	-------	----------	-------	---------	----------	--------	-------

Cardinal Laboratories**Inorganic Compounds**

Chloride	16.0		16.0	mg/kg	4	9101606	AC	16-Oct-19	4500-Cl-B	
-----------------	-------------	--	------	-------	---	---------	----	-----------	-----------	--

Cardinal Laboratories

*=Accredited Analyte

PLEASE NOTE: Liability and Damages. Cardinal's liability and client's exclusive remedy for any claim arising, whether based in contract or tort, shall be limited to the amount paid by client for analyses. All claims, including those for negligence or any other cause whatsoever shall be deemed waived unless made in writing and received by Cardinal within thirty (30) days after completion of the applicable service. In no event shall Cardinal be liable for incidental or consequential damage including, without limitation, business interruptions, loss of use, or loss of profits incurred by client, its subsidiaries, affiliates or successors arising out of or related to the performance of the services hereunder by Cardinal, regardless of whether such claim is based upon any of the above stated reasons or otherwise. Results relate only to the samples identified above. This report shall not be reproduced except in full with written approval of Cardinal Laboratories.

Celey D. Keene, Lab Director/Quality Manager



PHONE (575) 393-2326 ° 101 E. MARLAND ° HOBBS, NM 88240

Analytical Results For:

BBC International, Inc.
P.O. Box 805
Hobbs NM, 88241

Project: MESQUITE MOUTRAY SWD
Project Number: 6/26/2019
Project Manager: Cliff Brunson
Fax To: (575) 397-0397

Reported:
18-Oct-19 11:44

SP 6 @ SURFACE
H903469-34 (Soil)

Analyte	Result	MDL	Reporting Limit	Units	Dilution	Batch	Analyst	Analyzed	Method	Notes
---------	--------	-----	-----------------	-------	----------	-------	---------	----------	--------	-------

Cardinal Laboratories**Inorganic Compounds**

Chloride	7200		16.0	mg/kg	4	9101606	AC	16-Oct-19	4500-Cl-B	
-----------------	-------------	--	------	-------	---	---------	----	-----------	-----------	--

Volatile Organic Compounds by EPA Method 8021

Benzene*	<0.050	0.050	mg/kg	50	9101507	BF	15-Oct-19	8021B	
Toluene*	<0.050	0.050	mg/kg	50	9101507	BF	15-Oct-19	8021B	
Ethylbenzene*	<0.050	0.050	mg/kg	50	9101507	BF	15-Oct-19	8021B	
Total Xylenes*	<0.150	0.150	mg/kg	50	9101507	BF	15-Oct-19	8021B	
Total BTEX	<0.300	0.300	mg/kg	50	9101507	BF	15-Oct-19	8021B	

<i>Surrogate: 4-Bromofluorobenzene (PID)</i>		97.9 %		73.3-129	9101507	BF	15-Oct-19	8021B	
--	--	--------	--	----------	---------	----	-----------	-------	--

Petroleum Hydrocarbons by GC FID

GRO C6-C10*	<10.0	10.0	mg/kg	1	9101501	MS	15-Oct-19	8015B	
DRO >C10-C28*	<10.0	10.0	mg/kg	1	9101501	MS	15-Oct-19	8015B	
EXT DRO >C28-C36	<10.0	10.0	mg/kg	1	9101501	MS	15-Oct-19	8015B	

<i>Surrogate: 1-Chlorooctane</i>		91.8 %		41-142	9101501	MS	15-Oct-19	8015B	
----------------------------------	--	--------	--	--------	---------	----	-----------	-------	--

<i>Surrogate: 1-Chlorooctadecane</i>		96.9 %		37.6-147	9101501	MS	15-Oct-19	8015B	
--------------------------------------	--	--------	--	----------	---------	----	-----------	-------	--

Cardinal Laboratories

*=Accredited Analyte

PLEASE NOTE: Liability and Damages. Cardinal's liability and client's exclusive remedy for any claim arising, whether based in contract or tort, shall be limited to the amount paid by client for analyses. All claims, including those for negligence or any other cause whatsoever shall be deemed waived unless made in writing and received by Cardinal within thirty (30) days after completion of the applicable service. In no event shall Cardinal be liable for incidental or consequential damage including, without limitation, business interruptions, loss of use, or loss of profits incurred by client, its subsidiaries, affiliates or successors arising out of or related to the performance of the services hereunder by Cardinal, regardless of whether such claim is based upon any of the above stated reasons or otherwise. Results relate only to the samples identified above. This report shall not be reproduced except in full with written approval of Cardinal Laboratories.

Celey D. Keene, Lab Director/Quality Manager



PHONE (575) 393-2326 ° 101 E. MARLAND ° HOBBS, NM 88240

Analytical Results For:

BBC International, Inc.
P.O. Box 805
Hobbs NM, 88241

Project: MESQUITE MOUTRAY SWD
Project Number: 6/26/2019
Project Manager: Cliff Brunson
Fax To: (575) 397-0397

Reported:
18-Oct-19 11:44

SP 6 @ 1'
H903469-35 (Soil)

Analyte	Result	MDL	Reporting Limit	Units	Dilution	Batch	Analyst	Analyzed	Method	Notes
---------	--------	-----	-----------------	-------	----------	-------	---------	----------	--------	-------

Cardinal Laboratories**Inorganic Compounds**

Chloride	2560		16.0	mg/kg	4	9101606	AC	16-Oct-19	4500-Cl-B	
-----------------	-------------	--	------	-------	---	---------	----	-----------	-----------	--

Volatile Organic Compounds by EPA Method 8021

Benzene*	<0.050	0.050	mg/kg	50	9101507	BF	15-Oct-19	8021B	
Toluene*	<0.050	0.050	mg/kg	50	9101507	BF	15-Oct-19	8021B	
Ethylbenzene*	<0.050	0.050	mg/kg	50	9101507	BF	15-Oct-19	8021B	
Total Xylenes*	<0.150	0.150	mg/kg	50	9101507	BF	15-Oct-19	8021B	
Total BTEX	<0.300	0.300	mg/kg	50	9101507	BF	15-Oct-19	8021B	

<i>Surrogate: 4-Bromofluorobenzene (PID)</i>		97.6 %		73.3-129	9101507	BF	15-Oct-19	8021B	
--	--	--------	--	----------	---------	----	-----------	-------	--

Petroleum Hydrocarbons by GC FID

GRO C6-C10*	<10.0	10.0	mg/kg	1	9101501	MS	15-Oct-19	8015B	
DRO >C10-C28*	<10.0	10.0	mg/kg	1	9101501	MS	15-Oct-19	8015B	
EXT DRO >C28-C36	<10.0	10.0	mg/kg	1	9101501	MS	15-Oct-19	8015B	

<i>Surrogate: 1-Chlorooctane</i>		88.6 %		41-142	9101501	MS	15-Oct-19	8015B	
----------------------------------	--	--------	--	--------	---------	----	-----------	-------	--

<i>Surrogate: 1-Chlorooctadecane</i>		93.8 %		37.6-147	9101501	MS	15-Oct-19	8015B	
--------------------------------------	--	--------	--	----------	---------	----	-----------	-------	--

Cardinal Laboratories

*=Accredited Analyte

PLEASE NOTE: Liability and Damages. Cardinal's liability and client's exclusive remedy for any claim arising, whether based in contract or tort, shall be limited to the amount paid by client for analyses. All claims, including those for negligence or any other cause whatsoever shall be deemed waived unless made in writing and received by Cardinal within thirty (30) days after completion of the applicable service. In no event shall Cardinal be liable for incidental or consequential damage including, without limitation, business interruptions, loss of use, or loss of profits incurred by client, its subsidiaries, affiliates or successors arising out of or related to the performance of the services hereunder by Cardinal, regardless of whether such claim is based upon any of the above stated reasons or otherwise. Results relate only to the samples identified above. This report shall not be reproduced except in full with written approval of Cardinal Laboratories.

Celey D. Keene, Lab Director/Quality Manager



PHONE (575) 393-2326 ° 101 E. MARLAND ° HOBBS, NM 88240

Analytical Results For:

BBC International, Inc.
P.O. Box 805
Hobbs NM, 88241

Project: MESQUITE MOUTRAY SWD
Project Number: 6/26/2019
Project Manager: Cliff Brunson
Fax To: (575) 397-0397

Reported:
18-Oct-19 11:44

SP 6 @ 2'
H903469-36 (Soil)

Analyte	Result	MDL	Reporting Limit	Units	Dilution	Batch	Analyst	Analyzed	Method	Notes
---------	--------	-----	-----------------	-------	----------	-------	---------	----------	--------	-------

Cardinal Laboratories**Inorganic Compounds**

Chloride	3040		16.0	mg/kg	4	9101606	AC	16-Oct-19	4500-Cl-B	
-----------------	-------------	--	------	-------	---	---------	----	-----------	-----------	--

Cardinal Laboratories

*=Accredited Analyte

PLEASE NOTE: Liability and Damages. Cardinal's liability and client's exclusive remedy for any claim arising, whether based in contract or tort, shall be limited to the amount paid by client for analyses. All claims, including those for negligence or any other cause whatsoever shall be deemed waived unless made in writing and received by Cardinal within thirty (30) days after completion of the applicable service. In no event shall Cardinal be liable for incidental or consequential damage including, without limitation, business interruptions, loss of use, or loss of profits incurred by client, its subsidiaries, affiliates or successors arising out of or related to the performance of the services hereunder by Cardinal, regardless of whether such claim is based upon any of the above stated reasons or otherwise. Results relate only to the samples identified above. This report shall not be reproduced except in full with written approval of Cardinal Laboratories.

Celey D. Keene, Lab Director/Quality Manager



PHONE (575) 393-2326 ° 101 E. MARLAND ° HOBBS, NM 88240

Analytical Results For:

BBC International, Inc.
P.O. Box 805
Hobbs NM, 88241

Project: MESQUITE MOUTRAY SWD
Project Number: 6/26/2019
Project Manager: Cliff Brunson
Fax To: (575) 397-0397

Reported:
18-Oct-19 11:44

SP 6 @ 3'
H903469-37 (Soil)

Analyte	Result	MDL	Reporting Limit	Units	Dilution	Batch	Analyst	Analyzed	Method	Notes
---------	--------	-----	--------------------	-------	----------	-------	---------	----------	--------	-------

Cardinal Laboratories**Inorganic Compounds**

Chloride	1010		16.0	mg/kg	4	9101515	AC	16-Oct-19	4500-Cl-B	
-----------------	-------------	--	------	-------	---	---------	----	-----------	-----------	--

Cardinal Laboratories

*=Accredited Analyte

PLEASE NOTE: Liability and Damages. Cardinal's liability and client's exclusive remedy for any claim arising, whether based in contract or tort, shall be limited to the amount paid by client for analyses. All claims, including those for negligence or any other cause whatsoever shall be deemed waived unless made in writing and received by Cardinal within thirty (30) days after completion of the applicable service. In no event shall Cardinal be liable for incidental or consequential damage including, without limitation, business interruptions, loss of use, or loss of profits incurred by client, its subsidiaries, affiliates or successors arising out of or related to the performance of the services hereunder by Cardinal, regardless of whether such claim is based upon any of the above stated reasons or otherwise. Results relate only to the samples identified above. This report shall not be reproduced except in full with written approval of Cardinal Laboratories.

Celey D. Keene, Lab Director/Quality Manager



PHONE (575) 393-2326 ° 101 E. MARLAND ° HOBBS, NM 88240

Analytical Results For:

BBC International, Inc.
P.O. Box 805
Hobbs NM, 88241

Project: MESQUITE MOUTRAY SWD
Project Number: 6/26/2019
Project Manager: Cliff Brunson
Fax To: (575) 397-0397

Reported:
18-Oct-19 11:44

SP 6 @ 4'
H903469-38 (Soil)

Analyte	Result	MDL	Reporting Limit	Units	Dilution	Batch	Analyst	Analyzed	Method	Notes
---------	--------	-----	-----------------	-------	----------	-------	---------	----------	--------	-------

Cardinal Laboratories**Inorganic Compounds**

Chloride	1090		16.0	mg/kg	4	9101515	AC	16-Oct-19	4500-Cl-B	
-----------------	-------------	--	------	-------	---	---------	----	-----------	-----------	--

Cardinal Laboratories

*=Accredited Analyte

PLEASE NOTE: Liability and Damages. Cardinal's liability and client's exclusive remedy for any claim arising, whether based in contract or tort, shall be limited to the amount paid by client for analyses. All claims, including those for negligence or any other cause whatsoever shall be deemed waived unless made in writing and received by Cardinal within thirty (30) days after completion of the applicable service. In no event shall Cardinal be liable for incidental or consequential damage including, without limitation, business interruptions, loss of use, or loss of profits incurred by client, its subsidiaries, affiliates or successors arising out of or related to the performance of the services hereunder by Cardinal, regardless of whether such claim is based upon any of the above stated reasons or otherwise. Results relate only to the samples identified above. This report shall not be reproduced except in full with written approval of Cardinal Laboratories.

Celey D. Keene, Lab Director/Quality Manager



PHONE (575) 393-2326 ° 101 E. MARLAND ° HOBBS, NM 88240

Analytical Results For:

BBC International, Inc.
P.O. Box 805
Hobbs NM, 88241

Project: MESQUITE MOUTRAY SWD
Project Number: 6/26/2019
Project Manager: Cliff Brunson
Fax To: (575) 397-0397

Reported:
18-Oct-19 11:44

SP 6 @ 5'
H903469-39 (Soil)

Analyte	Result	MDL	Reporting Limit	Units	Dilution	Batch	Analyst	Analyzed	Method	Notes
---------	--------	-----	-----------------	-------	----------	-------	---------	----------	--------	-------

Cardinal Laboratories**Inorganic Compounds**

Chloride	16.0		16.0	mg/kg	4	9101515	AC	16-Oct-19	4500-Cl-B	
-----------------	-------------	--	------	-------	---	---------	----	-----------	-----------	--

Cardinal Laboratories

*=Accredited Analyte

PLEASE NOTE: Liability and Damages. Cardinal's liability and client's exclusive remedy for any claim arising, whether based in contract or tort, shall be limited to the amount paid by client for analyses. All claims, including those for negligence or any other cause whatsoever shall be deemed waived unless made in writing and received by Cardinal within thirty (30) days after completion of the applicable service. In no event shall Cardinal be liable for incidental or consequential damage including, without limitation, business interruptions, loss of use, or loss of profits incurred by client, its subsidiaries, affiliates or successors arising out of or related to the performance of the services hereunder by Cardinal, regardless of whether such claim is based upon any of the above stated reasons or otherwise. Results relate only to the samples identified above. This report shall not be reproduced except in full with written approval of Cardinal Laboratories.

Celey D. Keene, Lab Director/Quality Manager



PHONE (575) 393-2326 ° 101 E. MARLAND ° HOBBS, NM 88240

Analytical Results For:

BBC International, Inc.
P.O. Box 805
Hobbs NM, 88241

Project: MESQUITE MOUTRAY SWD
Project Number: 6/26/2019
Project Manager: Cliff Brunson
Fax To: (575) 397-0397

Reported:
18-Oct-19 11:44

SP 6 @ 6'
H903469-40 (Soil)

Analyte	Result	MDL	Reporting Limit	Units	Dilution	Batch	Analyst	Analyzed	Method	Notes
---------	--------	-----	-----------------	-------	----------	-------	---------	----------	--------	-------

Cardinal Laboratories**Inorganic Compounds**

Chloride	32.0		16.0	mg/kg	4	9101515	AC	16-Oct-19	4500-Cl-B	
-----------------	-------------	--	------	-------	---	---------	----	-----------	-----------	--

Cardinal Laboratories

*=Accredited Analyte

PLEASE NOTE: Liability and Damages. Cardinal's liability and client's exclusive remedy for any claim arising, whether based in contract or tort, shall be limited to the amount paid by client for analyses. All claims, including those for negligence or any other cause whatsoever shall be deemed waived unless made in writing and received by Cardinal within thirty (30) days after completion of the applicable service. In no event shall Cardinal be liable for incidental or consequential damage including, without limitation, business interruptions, loss of use, or loss of profits incurred by client, its subsidiaries, affiliates or successors arising out of or related to the performance of the services hereunder by Cardinal, regardless of whether such claim is based upon any of the above stated reasons or otherwise. Results relate only to the samples identified above. This report shall not be reproduced except in full with written approval of Cardinal Laboratories.

Celey D. Keene, Lab Director/Quality Manager



PHONE (575) 393-2326 ° 101 E. MARLAND ° HOBBS, NM 88240

Analytical Results For:

BBC International, Inc.
P.O. Box 805
Hobbs NM, 88241

Project: MESQUITE MOUTRAY SWD
Project Number: 6/26/2019
Project Manager: Cliff Brunson
Fax To: (575) 397-0397

Reported:
18-Oct-19 11:44

SP 7 @ SURFACE
H903469-41 (Soil)

Analyte	Result	MDL	Reporting Limit	Units	Dilution	Batch	Analyst	Analyzed	Method	Notes
---------	--------	-----	-----------------	-------	----------	-------	---------	----------	--------	-------

Cardinal Laboratories**Inorganic Compounds**

Chloride	1760		16.0	mg/kg	4	9101515	AC	16-Oct-19	4500-Cl-B	
-----------------	-------------	--	------	-------	---	---------	----	-----------	-----------	--

Volatile Organic Compounds by EPA Method 8021

Benzene*	<0.050	0.050	mg/kg	50	9101507	BF	15-Oct-19	8021B	
Toluene*	<0.050	0.050	mg/kg	50	9101507	BF	15-Oct-19	8021B	
Ethylbenzene*	<0.050	0.050	mg/kg	50	9101507	BF	15-Oct-19	8021B	
Total Xylenes*	<0.150	0.150	mg/kg	50	9101507	BF	15-Oct-19	8021B	
Total BTEX	<0.300	0.300	mg/kg	50	9101507	BF	15-Oct-19	8021B	

<i>Surrogate: 4-Bromofluorobenzene (PID)</i>		97.7 %		73.3-129	9101507	BF	15-Oct-19	8021B	
--	--	--------	--	----------	---------	----	-----------	-------	--

Petroleum Hydrocarbons by GC FID

GRO C6-C10*	<10.0	10.0	mg/kg	1	9101501	MS	15-Oct-19	8015B	
DRO >C10-C28*	<10.0	10.0	mg/kg	1	9101501	MS	15-Oct-19	8015B	
EXT DRO >C28-C36	<10.0	10.0	mg/kg	1	9101501	MS	15-Oct-19	8015B	

<i>Surrogate: 1-Chlorooctane</i>		92.7 %		41-142	9101501	MS	15-Oct-19	8015B	
----------------------------------	--	--------	--	--------	---------	----	-----------	-------	--

<i>Surrogate: 1-Chlorooctadecane</i>		98.0 %		37.6-147	9101501	MS	15-Oct-19	8015B	
--------------------------------------	--	--------	--	----------	---------	----	-----------	-------	--

Cardinal Laboratories

*=Accredited Analyte

PLEASE NOTE: Liability and Damages. Cardinal's liability and client's exclusive remedy for any claim arising, whether based in contract or tort, shall be limited to the amount paid by client for analyses. All claims, including those for negligence or any other cause whatsoever shall be deemed waived unless made in writing and received by Cardinal within thirty (30) days after completion of the applicable service. In no event shall Cardinal be liable for incidental or consequential damage including, without limitation, business interruptions, loss of use, or loss of profits incurred by client, its subsidiaries, affiliates or successors arising out of or related to the performance of the services hereunder by Cardinal, regardless of whether such claim is based upon any of the above stated reasons or otherwise. Results relate only to the samples identified above. This report shall not be reproduced except in full with written approval of Cardinal Laboratories.

Celey D. Keene, Lab Director/Quality Manager



PHONE (575) 393-2326 ° 101 E. MARLAND ° HOBBS, NM 88240

Analytical Results For:

BBC International, Inc.
P.O. Box 805
Hobbs NM, 88241

Project: MESQUITE MOUTRAY SWD
Project Number: 6/26/2019
Project Manager: Cliff Brunson
Fax To: (575) 397-0397

Reported:
18-Oct-19 11:44

SP 7 @ 1'
H903469-42 (Soil)

Analyte	Result	MDL	Reporting Limit	Units	Dilution	Batch	Analyst	Analyzed	Method	Notes
---------	--------	-----	-----------------	-------	----------	-------	---------	----------	--------	-------

Cardinal Laboratories**Inorganic Compounds**

Chloride	3040		16.0	mg/kg	4	9101515	AC	16-Oct-19	4500-Cl-B	
-----------------	-------------	--	------	-------	---	---------	----	-----------	-----------	--

Volatile Organic Compounds by EPA Method 8021

Benzene*	<0.050	0.050	mg/kg	50	9101507	BF	15-Oct-19	8021B	
Toluene*	<0.050	0.050	mg/kg	50	9101507	BF	15-Oct-19	8021B	
Ethylbenzene*	<0.050	0.050	mg/kg	50	9101507	BF	15-Oct-19	8021B	
Total Xylenes*	<0.150	0.150	mg/kg	50	9101507	BF	15-Oct-19	8021B	
Total BTEX	<0.300	0.300	mg/kg	50	9101507	BF	15-Oct-19	8021B	

Surrogate: 4-Bromofluorobenzene (PID)		97.4 %		73.3-129	9101507	BF	15-Oct-19	8021B	
---------------------------------------	--	--------	--	----------	---------	----	-----------	-------	--

Petroleum Hydrocarbons by GC FID

GRO C6-C10*	<10.0	10.0	mg/kg	1	9101501	MS	15-Oct-19	8015B	
DRO >C10-C28*	<10.0	10.0	mg/kg	1	9101501	MS	15-Oct-19	8015B	
EXT DRO >C28-C36	<10.0	10.0	mg/kg	1	9101501	MS	15-Oct-19	8015B	

Surrogate: 1-Chlorooctane		91.6 %		41-142	9101501	MS	15-Oct-19	8015B	
---------------------------	--	--------	--	--------	---------	----	-----------	-------	--

Surrogate: 1-Chlorooctadecane		98.6 %		37.6-147	9101501	MS	15-Oct-19	8015B	
-------------------------------	--	--------	--	----------	---------	----	-----------	-------	--

Cardinal Laboratories

*=Accredited Analyte

PLEASE NOTE: Liability and Damages. Cardinal's liability and client's exclusive remedy for any claim arising, whether based in contract or tort, shall be limited to the amount paid by client for analyses. All claims, including those for negligence or any other cause whatsoever shall be deemed waived unless made in writing and received by Cardinal within thirty (30) days after completion of the applicable service. In no event shall Cardinal be liable for incidental or consequential damage including, without limitation, business interruptions, loss of use, or loss of profits incurred by client, its subsidiaries, affiliates or successors arising out of or related to the performance of the services hereunder by Cardinal, regardless of whether such claim is based upon any of the above stated reasons or otherwise. Results relate only to the samples identified above. This report shall not be reproduced except in full with written approval of Cardinal Laboratories.

Celey D. Keene, Lab Director/Quality Manager



PHONE (575) 393-2326 ° 101 E. MARLAND ° HOBBS, NM 88240

Analytical Results For:

BBC International, Inc.
P.O. Box 805
Hobbs NM, 88241

Project: MESQUITE MOUTRAY SWD
Project Number: 6/26/2019
Project Manager: Cliff Brunson
Fax To: (575) 397-0397

Reported:
18-Oct-19 11:44

SP 7 @ 2'
H903469-43 (Soil)

Analyte	Result	MDL	Reporting Limit	Units	Dilution	Batch	Analyst	Analyzed	Method	Notes
---------	--------	-----	-----------------	-------	----------	-------	---------	----------	--------	-------

Cardinal Laboratories**Inorganic Compounds**

Chloride	3960		16.0	mg/kg	4	9101515	AC	16-Oct-19	4500-Cl-B	
-----------------	-------------	--	------	-------	---	---------	----	-----------	-----------	--

Cardinal Laboratories

*=Accredited Analyte

PLEASE NOTE: Liability and Damages. Cardinal's liability and client's exclusive remedy for any claim arising, whether based in contract or tort, shall be limited to the amount paid by client for analyses. All claims, including those for negligence or any other cause whatsoever shall be deemed waived unless made in writing and received by Cardinal within thirty (30) days after completion of the applicable service. In no event shall Cardinal be liable for incidental or consequential damage including, without limitation, business interruptions, loss of use, or loss of profits incurred by client, its subsidiaries, affiliates or successors arising out of or related to the performance of the services hereunder by Cardinal, regardless of whether such claim is based upon any of the above stated reasons or otherwise. Results relate only to the samples identified above. This report shall not be reproduced except in full with written approval of Cardinal Laboratories.

Celey D. Keene, Lab Director/Quality Manager



PHONE (575) 393-2326 ° 101 E. MARLAND ° HOBBS, NM 88240

Analytical Results For:

BBC International, Inc.
P.O. Box 805
Hobbs NM, 88241

Project: MESQUITE MOUTRAY SWD
Project Number: 6/26/2019
Project Manager: Cliff Brunson
Fax To: (575) 397-0397

Reported:
18-Oct-19 11:44

SP 7 @ 3'
H903469-44 (Soil)

Analyte	Result	MDL	Reporting Limit	Units	Dilution	Batch	Analyst	Analyzed	Method	Notes
---------	--------	-----	--------------------	-------	----------	-------	---------	----------	--------	-------

Cardinal Laboratories**Inorganic Compounds**

Chloride	4320		16.0	mg/kg	4	9101515	AC	16-Oct-19	4500-Cl-B	
-----------------	-------------	--	------	-------	---	---------	----	-----------	-----------	--

Cardinal Laboratories

*=Accredited Analyte

PLEASE NOTE: Liability and Damages. Cardinal's liability and client's exclusive remedy for any claim arising, whether based in contract or tort, shall be limited to the amount paid by client for analyses. All claims, including those for negligence or any other cause whatsoever shall be deemed waived unless made in writing and received by Cardinal within thirty (30) days after completion of the applicable service. In no event shall Cardinal be liable for incidental or consequential damage including, without limitation, business interruptions, loss of use, or loss of profits incurred by client, its subsidiaries, affiliates or successors arising out of or related to the performance of the services hereunder by Cardinal, regardless of whether such claim is based upon any of the above stated reasons or otherwise. Results relate only to the samples identified above. This report shall not be reproduced except in full with written approval of Cardinal Laboratories.

Celey D. Keene, Lab Director/Quality Manager



PHONE (575) 393-2326 ° 101 E. MARLAND ° HOBBS, NM 88240

Analytical Results For:

BBC International, Inc.
P.O. Box 805
Hobbs NM, 88241

Project: MESQUITE MOUTRAY SWD
Project Number: 6/26/2019
Project Manager: Cliff Brunson
Fax To: (575) 397-0397

Reported:
18-Oct-19 11:44

SP 7 @ 4'
H903469-45 (Soil)

Analyte	Result	MDL	Reporting Limit	Units	Dilution	Batch	Analyst	Analyzed	Method	Notes
---------	--------	-----	-----------------	-------	----------	-------	---------	----------	--------	-------

Cardinal Laboratories**Inorganic Compounds**

Chloride	5760		16.0	mg/kg	4	9101515	AC	16-Oct-19	4500-Cl-B	
-----------------	-------------	--	------	-------	---	---------	----	-----------	-----------	--

Cardinal Laboratories

*=Accredited Analyte

PLEASE NOTE: Liability and Damages. Cardinal's liability and client's exclusive remedy for any claim arising, whether based in contract or tort, shall be limited to the amount paid by client for analyses. All claims, including those for negligence or any other cause whatsoever shall be deemed waived unless made in writing and received by Cardinal within thirty (30) days after completion of the applicable service. In no event shall Cardinal be liable for incidental or consequential damage including, without limitation, business interruptions, loss of use, or loss of profits incurred by client, its subsidiaries, affiliates or successors arising out of or related to the performance of the services hereunder by Cardinal, regardless of whether such claim is based upon any of the above stated reasons or otherwise. Results relate only to the samples identified above. This report shall not be reproduced except in full with written approval of Cardinal Laboratories.

Celey D. Keene, Lab Director/Quality Manager



PHONE (575) 393-2326 ° 101 E. MARLAND ° HOBBS, NM 88240

Analytical Results For:

BBC International, Inc.
P.O. Box 805
Hobbs NM, 88241

Project: MESQUITE MOUTRAY SWD
Project Number: 6/26/2019
Project Manager: Cliff Brunson
Fax To: (575) 397-0397

Reported:
18-Oct-19 11:44

SP 7 @ 5'
H903469-46 (Soil)

Analyte	Result	MDL	Reporting Limit	Units	Dilution	Batch	Analyst	Analyzed	Method	Notes
---------	--------	-----	-----------------	-------	----------	-------	---------	----------	--------	-------

Cardinal Laboratories**Inorganic Compounds**

Chloride	7060		16.0	mg/kg	4	9101515	AC	16-Oct-19	4500-Cl-B	
-----------------	-------------	--	------	-------	---	---------	----	-----------	-----------	--

Cardinal Laboratories

*=Accredited Analyte

PLEASE NOTE: Liability and Damages. Cardinal's liability and client's exclusive remedy for any claim arising, whether based in contract or tort, shall be limited to the amount paid by client for analyses. All claims, including those for negligence or any other cause whatsoever shall be deemed waived unless made in writing and received by Cardinal within thirty (30) days after completion of the applicable service. In no event shall Cardinal be liable for incidental or consequential damage including, without limitation, business interruptions, loss of use, or loss of profits incurred by client, its subsidiaries, affiliates or successors arising out of or related to the performance of the services hereunder by Cardinal, regardless of whether such claim is based upon any of the above stated reasons or otherwise. Results relate only to the samples identified above. This report shall not be reproduced except in full with written approval of Cardinal Laboratories.

Celey D. Keene, Lab Director/Quality Manager



PHONE (575) 393-2326 ° 101 E. MARLAND ° HOBBS, NM 88240

Analytical Results For:

BBC International, Inc.
P.O. Box 805
Hobbs NM, 88241

Project: MESQUITE MOUTRAY SWD
Project Number: 6/26/2019
Project Manager: Cliff Brunson
Fax To: (575) 397-0397

Reported:
18-Oct-19 11:44

SP 7 @ 6'
H903469-47 (Soil)

Analyte	Result	MDL	Reporting Limit	Units	Dilution	Batch	Analyst	Analyzed	Method	Notes
---------	--------	-----	-----------------	-------	----------	-------	---------	----------	--------	-------

Cardinal Laboratories**Inorganic Compounds**

Chloride	4800		16.0	mg/kg	4	9101515	AC	16-Oct-19	4500-Cl-B	
-----------------	-------------	--	------	-------	---	---------	----	-----------	-----------	--

Cardinal Laboratories

*=Accredited Analyte

PLEASE NOTE: Liability and Damages. Cardinal's liability and client's exclusive remedy for any claim arising, whether based in contract or tort, shall be limited to the amount paid by client for analyses. All claims, including those for negligence or any other cause whatsoever shall be deemed waived unless made in writing and received by Cardinal within thirty (30) days after completion of the applicable service. In no event shall Cardinal be liable for incidental or consequential damage including, without limitation, business interruptions, loss of use, or loss of profits incurred by client, its subsidiaries, affiliates or successors arising out of or related to the performance of the services hereunder by Cardinal, regardless of whether such claim is based upon any of the above stated reasons or otherwise. Results relate only to the samples identified above. This report shall not be reproduced except in full with written approval of Cardinal Laboratories.

Celey D. Keene, Lab Director/Quality Manager



PHONE (575) 393-2326 ° 101 E. MARLAND ° HOBBS, NM 88240

Analytical Results For:

BBC International, Inc.
P.O. Box 805
Hobbs NM, 88241

Project: MESQUITE MOUTRAY SWD
Project Number: 6/26/2019
Project Manager: Cliff Brunson
Fax To: (575) 397-0397

Reported:
18-Oct-19 11:44

SP 7 @ 7'
H903469-48 (Soil)

Analyte	Result	MDL	Reporting Limit	Units	Dilution	Batch	Analyst	Analyzed	Method	Notes
---------	--------	-----	-----------------	-------	----------	-------	---------	----------	--------	-------

Cardinal Laboratories**Inorganic Compounds**

Chloride	8400		16.0	mg/kg	4	9101515	AC	16-Oct-19	4500-Cl-B	
-----------------	-------------	--	------	-------	---	---------	----	-----------	-----------	--

Cardinal Laboratories

*=Accredited Analyte

PLEASE NOTE: Liability and Damages. Cardinal's liability and client's exclusive remedy for any claim arising, whether based in contract or tort, shall be limited to the amount paid by client for analyses. All claims, including those for negligence or any other cause whatsoever shall be deemed waived unless made in writing and received by Cardinal within thirty (30) days after completion of the applicable service. In no event shall Cardinal be liable for incidental or consequential damage including, without limitation, business interruptions, loss of use, or loss of profits incurred by client, its subsidiaries, affiliates or successors arising out of or related to the performance of the services hereunder by Cardinal, regardless of whether such claim is based upon any of the above stated reasons or otherwise. Results relate only to the samples identified above. This report shall not be reproduced except in full with written approval of Cardinal Laboratories.

Celey D. Keene, Lab Director/Quality Manager



PHONE (575) 393-2326 ° 101 E. MARLAND ° HOBBS, NM 88240

Analytical Results For:

BBC International, Inc.
P.O. Box 805
Hobbs NM, 88241

Project: MESQUITE MOUTRAY SWD
Project Number: 6/26/2019
Project Manager: Cliff Brunson
Fax To: (575) 397-0397

Reported:
18-Oct-19 11:44

SP 7 @ 8'
H903469-49 (Soil)

Analyte	Result	MDL	Reporting Limit	Units	Dilution	Batch	Analyst	Analyzed	Method	Notes
---------	--------	-----	-----------------	-------	----------	-------	---------	----------	--------	-------

Cardinal Laboratories**Inorganic Compounds**

Chloride	13400		16.0	mg/kg	4	9101515	AC	16-Oct-19	4500-Cl-B	
-----------------	--------------	--	------	-------	---	---------	----	-----------	-----------	--

Cardinal Laboratories

*=Accredited Analyte

PLEASE NOTE: Liability and Damages. Cardinal's liability and client's exclusive remedy for any claim arising, whether based in contract or tort, shall be limited to the amount paid by client for analyses. All claims, including those for negligence or any other cause whatsoever shall be deemed waived unless made in writing and received by Cardinal within thirty (30) days after completion of the applicable service. In no event shall Cardinal be liable for incidental or consequential damage including, without limitation, business interruptions, loss of use, or loss of profits incurred by client, its subsidiaries, affiliates or successors arising out of or related to the performance of the services hereunder by Cardinal, regardless of whether such claim is based upon any of the above stated reasons or otherwise. Results relate only to the samples identified above. This report shall not be reproduced except in full with written approval of Cardinal Laboratories.

Celey D. Keene, Lab Director/Quality Manager



PHONE (575) 393-2326 ° 101 E. MARLAND ° HOBBS, NM 88240

Analytical Results For:

BBC International, Inc.
P.O. Box 805
Hobbs NM, 88241

Project: MESQUITE MOUTRAY SWD
Project Number: 6/26/2019
Project Manager: Cliff Brunson
Fax To: (575) 397-0397

Reported:
18-Oct-19 11:44

SP 7 @ 9'
H903469-50 (Soil)

Analyte	Result	MDL	Reporting Limit	Units	Dilution	Batch	Analyst	Analyzed	Method	Notes
---------	--------	-----	-----------------	-------	----------	-------	---------	----------	--------	-------

Cardinal Laboratories**Inorganic Compounds**

Chloride	9330		16.0	mg/kg	4	9101515	AC	16-Oct-19	4500-Cl-B	
-----------------	-------------	--	------	-------	---	---------	----	-----------	-----------	--

Cardinal Laboratories

*=Accredited Analyte

PLEASE NOTE: Liability and Damages. Cardinal's liability and client's exclusive remedy for any claim arising, whether based in contract or tort, shall be limited to the amount paid by client for analyses. All claims, including those for negligence or any other cause whatsoever shall be deemed waived unless made in writing and received by Cardinal within thirty (30) days after completion of the applicable service. In no event shall Cardinal be liable for incidental or consequential damage including, without limitation, business interruptions, loss of use, or loss of profits incurred by client, its subsidiaries, affiliates or successors arising out of or related to the performance of the services hereunder by Cardinal, regardless of whether such claim is based upon any of the above stated reasons or otherwise. Results relate only to the samples identified above. This report shall not be reproduced except in full with written approval of Cardinal Laboratories.

Celey D. Keene, Lab Director/Quality Manager



PHONE (575) 393-2326 ° 101 E. MARLAND ° HOBBS, NM 88240

Analytical Results For:

BBC International, Inc.
P.O. Box 805
Hobbs NM, 88241

Project: MESQUITE MOUTRAY SWD
Project Number: 6/26/2019
Project Manager: Cliff Brunson
Fax To: (575) 397-0397

Reported:
18-Oct-19 11:44

SP 7 @ 10'
H903469-51 (Soil)

Analyte	Result	MDL	Reporting Limit	Units	Dilution	Batch	Analyst	Analyzed	Method	Notes
---------	--------	-----	--------------------	-------	----------	-------	---------	----------	--------	-------

Cardinal Laboratories**Inorganic Compounds**

Chloride	8400		16.0	mg/kg	4	9101515	AC	16-Oct-19	4500-Cl-B	
-----------------	-------------	--	------	-------	---	---------	----	-----------	-----------	--

Cardinal Laboratories

*=Accredited Analyte

PLEASE NOTE: Liability and Damages. Cardinal's liability and client's exclusive remedy for any claim arising, whether based in contract or tort, shall be limited to the amount paid by client for analyses. All claims, including those for negligence or any other cause whatsoever shall be deemed waived unless made in writing and received by Cardinal within thirty (30) days after completion of the applicable service. In no event shall Cardinal be liable for incidental or consequential damage including, without limitation, business interruptions, loss of use, or loss of profits incurred by client, its subsidiaries, affiliates or successors arising out of or related to the performance of the services hereunder by Cardinal, regardless of whether such claim is based upon any of the above stated reasons or otherwise. Results relate only to the samples identified above. This report shall not be reproduced except in full with written approval of Cardinal Laboratories.

Celey D. Keene, Lab Director/Quality Manager



PHONE (575) 393-2326 ° 101 E. MARLAND ° HOBBS, NM 88240

Analytical Results For:

BBC International, Inc.
P.O. Box 805
Hobbs NM, 88241

Project: MESQUITE MOUTRAY SWD
Project Number: 6/26/2019
Project Manager: Cliff Brunson
Fax To: (575) 397-0397

Reported:
18-Oct-19 11:44

NORTH @ SURFACE
H903469-52 (Soil)

Analyte	Result	MDL	Reporting Limit	Units	Dilution	Batch	Analyst	Analyzed	Method	Notes
---------	--------	-----	-----------------	-------	----------	-------	---------	----------	--------	-------

Cardinal Laboratories**Inorganic Compounds**

Chloride	32.0		16.0	mg/kg	4	9101515	AC	16-Oct-19	4500-Cl-B	
-----------------	-------------	--	------	-------	---	---------	----	-----------	-----------	--

Volatile Organic Compounds by EPA Method 8021

Benzene*	<0.050	0.050	mg/kg	50	9101507	BF	15-Oct-19	8021B	
Toluene*	<0.050	0.050	mg/kg	50	9101507	BF	15-Oct-19	8021B	
Ethylbenzene*	<0.050	0.050	mg/kg	50	9101507	BF	15-Oct-19	8021B	
Total Xylenes*	<0.150	0.150	mg/kg	50	9101507	BF	15-Oct-19	8021B	
Total BTEX	<0.300	0.300	mg/kg	50	9101507	BF	15-Oct-19	8021B	

<i>Surrogate: 4-Bromofluorobenzene (PID)</i>		97.7 %		73.3-129	9101507	BF	15-Oct-19	8021B	
--	--	--------	--	----------	---------	----	-----------	-------	--

Petroleum Hydrocarbons by GC FID

GRO C6-C10*	<10.0	10.0	mg/kg	1	9101501	MS	15-Oct-19	8015B	
DRO >C10-C28*	<10.0	10.0	mg/kg	1	9101501	MS	15-Oct-19	8015B	
EXT DRO >C28-C36	<10.0	10.0	mg/kg	1	9101501	MS	15-Oct-19	8015B	

<i>Surrogate: 1-Chlorooctane</i>		88.8 %		41-142	9101501	MS	15-Oct-19	8015B	
----------------------------------	--	--------	--	--------	---------	----	-----------	-------	--

<i>Surrogate: 1-Chlorooctadecane</i>		93.6 %		37.6-147	9101501	MS	15-Oct-19	8015B	
--------------------------------------	--	--------	--	----------	---------	----	-----------	-------	--

Cardinal Laboratories

*=Accredited Analyte

PLEASE NOTE: Liability and Damages. Cardinal's liability and client's exclusive remedy for any claim arising, whether based in contract or tort, shall be limited to the amount paid by client for analyses. All claims, including those for negligence or any other cause whatsoever shall be deemed waived unless made in writing and received by Cardinal within thirty (30) days after completion of the applicable service. In no event shall Cardinal be liable for incidental or consequential damage including, without limitation, business interruptions, loss of use, or loss of profits incurred by client, its subsidiaries, affiliates or successors arising out of or related to the performance of the services hereunder by Cardinal, regardless of whether such claim is based upon any of the above stated reasons or otherwise. Results relate only to the samples identified above. This report shall not be reproduced except in full with written approval of Cardinal Laboratories.

Celey D. Keene, Lab Director/Quality Manager



PHONE (575) 393-2326 ° 101 E. MARLAND ° HOBBS, NM 88240

Analytical Results For:

BBC International, Inc.
P.O. Box 805
Hobbs NM, 88241

Project: MESQUITE MOUTRAY SWD
Project Number: 6/26/2019
Project Manager: Cliff Brunson
Fax To: (575) 397-0397

Reported:
18-Oct-19 11:44

EAST @ SURFACE
H903469-53 (Soil)

Analyte	Result	MDL	Reporting Limit	Units	Dilution	Batch	Analyst	Analyzed	Method	Notes
---------	--------	-----	-----------------	-------	----------	-------	---------	----------	--------	-------

Cardinal Laboratories**Inorganic Compounds**

Chloride	<16.0		16.0	mg/kg	4	9101515	AC	16-Oct-19	4500-Cl-B	
----------	-------	--	------	-------	---	---------	----	-----------	-----------	--

Volatile Organic Compounds by EPA Method 8021

Benzene*	<0.050		0.050	mg/kg	50	9101507	BF	15-Oct-19	8021B	
Toluene*	<0.050		0.050	mg/kg	50	9101507	BF	15-Oct-19	8021B	
Ethylbenzene*	<0.050		0.050	mg/kg	50	9101507	BF	15-Oct-19	8021B	
Total Xylenes*	<0.150		0.150	mg/kg	50	9101507	BF	15-Oct-19	8021B	
Total BTEX	<0.300		0.300	mg/kg	50	9101507	BF	15-Oct-19	8021B	

Surrogate: 4-Bromofluorobenzene (PID)			97.5 %	73.3-129		9101507	BF	15-Oct-19	8021B	
---------------------------------------	--	--	--------	----------	--	---------	----	-----------	-------	--

Petroleum Hydrocarbons by GC FID

GRO C6-C10*	<10.0		10.0	mg/kg	1	9101501	MS	15-Oct-19	8015B	
DRO >C10-C28*	<10.0		10.0	mg/kg	1	9101501	MS	15-Oct-19	8015B	
EXT DRO >C28-C36	<10.0		10.0	mg/kg	1	9101501	MS	15-Oct-19	8015B	

Surrogate: 1-Chlorooctane			85.0 %	41-142		9101501	MS	15-Oct-19	8015B	
---------------------------	--	--	--------	--------	--	---------	----	-----------	-------	--

Surrogate: 1-Chlorooctadecane			89.6 %	37.6-147		9101501	MS	15-Oct-19	8015B	
-------------------------------	--	--	--------	----------	--	---------	----	-----------	-------	--

Cardinal Laboratories

*=Accredited Analyte

PLEASE NOTE: Liability and Damages. Cardinal's liability and client's exclusive remedy for any claim arising, whether based in contract or tort, shall be limited to the amount paid by client for analyses. All claims, including those for negligence or any other cause whatsoever shall be deemed waived unless made in writing and received by Cardinal within thirty (30) days after completion of the applicable service. In no event shall Cardinal be liable for incidental or consequential damage including, without limitation, business interruptions, loss of use, or loss of profits incurred by client, its subsidiaries, affiliates or successors arising out of or related to the performance of the services hereunder by Cardinal, regardless of whether such claim is based upon any of the above stated reasons or otherwise. Results relate only to the samples identified above. This report shall not be reproduced except in full with written approval of Cardinal Laboratories.

Celey D. Keene, Lab Director/Quality Manager



PHONE (575) 393-2326 ° 101 E. MARLAND ° HOBBS, NM 88240

Analytical Results For:

BBC International, Inc.
P.O. Box 805
Hobbs NM, 88241

Project: MESQUITE MOUTRAY SWD
Project Number: 6/26/2019
Project Manager: Cliff Brunson
Fax To: (575) 397-0397

Reported:
18-Oct-19 11:44

WEST @ SURFACE
H903469-54 (Soil)

Analyte	Result	MDL	Reporting Limit	Units	Dilution	Batch	Analyst	Analyzed	Method	Notes
---------	--------	-----	-----------------	-------	----------	-------	---------	----------	--------	-------

Cardinal Laboratories**Inorganic Compounds**

Chloride	<16.0		16.0	mg/kg	4	9101515	AC	16-Oct-19	4500-Cl-B	
----------	-------	--	------	-------	---	---------	----	-----------	-----------	--

Volatile Organic Compounds by EPA Method 8021

Benzene*	<0.050		0.050	mg/kg	50	9101507	BF	15-Oct-19	8021B	
Toluene*	<0.050		0.050	mg/kg	50	9101507	BF	15-Oct-19	8021B	
Ethylbenzene*	<0.050		0.050	mg/kg	50	9101507	BF	15-Oct-19	8021B	
Total Xylenes*	<0.150		0.150	mg/kg	50	9101507	BF	15-Oct-19	8021B	
Total BTEX	<0.300		0.300	mg/kg	50	9101507	BF	15-Oct-19	8021B	

Surrogate: 4-Bromofluorobenzene (PID) 97.5 % 73.3-129 9101507 BF 15-Oct-19 8021B

Petroleum Hydrocarbons by GC FID

GRO C6-C10*	<10.0		10.0	mg/kg	1	9101501	MS	15-Oct-19	8015B	
DRO >C10-C28*	<10.0		10.0	mg/kg	1	9101501	MS	15-Oct-19	8015B	
EXT DRO >C28-C36	<10.0		10.0	mg/kg	1	9101501	MS	15-Oct-19	8015B	

Surrogate: 1-Chlorooctane 93.4 % 41-142 9101501 MS 15-Oct-19 8015B

Surrogate: 1-Chlorooctadecane 98.9 % 37.6-147 9101501 MS 15-Oct-19 8015B

Cardinal Laboratories

*=Accredited Analyte

PLEASE NOTE: Liability and Damages. Cardinal's liability and client's exclusive remedy for any claim arising, whether based in contract or tort, shall be limited to the amount paid by client for analyses. All claims, including those for negligence or any other cause whatsoever shall be deemed waived unless made in writing and received by Cardinal within thirty (30) days after completion of the applicable service. In no event shall Cardinal be liable for incidental or consequential damage including, without limitation, business interruptions, loss of use, or loss of profits incurred by client, its subsidiaries, affiliates or successors arising out of or related to the performance of the services hereunder by Cardinal, regardless of whether such claim is based upon any of the above stated reasons or otherwise. Results relate only to the samples identified above. This report shall not be reproduced except in full with written approval of Cardinal Laboratories.

Celey D. Keene, Lab Director/Quality Manager



PHONE (575) 393-2326 ° 101 E. MARLAND ° HOBBS, NM 88240

Analytical Results For:

BBC International, Inc.
P.O. Box 805
Hobbs NM, 88241

Project: MESQUITE MOUTRAY SWD
Project Number: 6/26/2019
Project Manager: Cliff Brunson
Fax To: (575) 397-0397

Reported:
18-Oct-19 11:44

SOUTH @ SURFACE
H903469-55 (Soil)

Analyte	Result	MDL	Reporting Limit	Units	Dilution	Batch	Analyst	Analyzed	Method	Notes
---------	--------	-----	-----------------	-------	----------	-------	---------	----------	--------	-------

Cardinal Laboratories**Inorganic Compounds**

Chloride	<16.0		16.0	mg/kg	4	9101515	AC	16-Oct-19	4500-Cl-B	
----------	-------	--	------	-------	---	---------	----	-----------	-----------	--

Volatile Organic Compounds by EPA Method 8021

Benzene*	<0.050		0.050	mg/kg	50	9101507	BF	15-Oct-19	8021B	
Toluene*	<0.050		0.050	mg/kg	50	9101507	BF	15-Oct-19	8021B	
Ethylbenzene*	<0.050		0.050	mg/kg	50	9101507	BF	15-Oct-19	8021B	
Total Xylenes*	<0.150		0.150	mg/kg	50	9101507	BF	15-Oct-19	8021B	
Total BTEX	<0.300		0.300	mg/kg	50	9101507	BF	15-Oct-19	8021B	

Surrogate: 4-Bromofluorobenzene (PID)			97.1 %		73.3-129	9101507	BF	15-Oct-19	8021B	
---------------------------------------	--	--	--------	--	----------	---------	----	-----------	-------	--

Petroleum Hydrocarbons by GC FID

GRO C6-C10*	<10.0		10.0	mg/kg	1	9101501	MS	15-Oct-19	8015B	
DRO >C10-C28*	<10.0		10.0	mg/kg	1	9101501	MS	15-Oct-19	8015B	
EXT DRO >C28-C36	<10.0		10.0	mg/kg	1	9101501	MS	15-Oct-19	8015B	

Surrogate: 1-Chlorooctane			86.3 %		41-142	9101501	MS	15-Oct-19	8015B	
---------------------------	--	--	--------	--	--------	---------	----	-----------	-------	--

Surrogate: 1-Chlorooctadecane			96.2 %		37.6-147	9101501	MS	15-Oct-19	8015B	
-------------------------------	--	--	--------	--	----------	---------	----	-----------	-------	--

Cardinal Laboratories

*=Accredited Analyte

PLEASE NOTE: Liability and Damages. Cardinal's liability and client's exclusive remedy for any claim arising, whether based in contract or tort, shall be limited to the amount paid by client for analyses. All claims, including those for negligence or any other cause whatsoever shall be deemed waived unless made in writing and received by Cardinal within thirty (30) days after completion of the applicable service. In no event shall Cardinal be liable for incidental or consequential damage including, without limitation, business interruptions, loss of use, or loss of profits incurred by client, its subsidiaries, affiliates or successors arising out of or related to the performance of the services hereunder by Cardinal, regardless of whether such claim is based upon any of the above stated reasons or otherwise. Results relate only to the samples identified above. This report shall not be reproduced except in full with written approval of Cardinal Laboratories.

Celey D. Keene, Lab Director/Quality Manager



PHONE (575) 393-2326 ° 101 E. MARLAND ° HOBBS, NM 88240

Analytical Results For:

BBC International, Inc.
P.O. Box 805
Hobbs NM, 88241

Project: MESQUITE MOUTRAY SWD
Project Number: 6/26/2019
Project Manager: Cliff Brunson
Fax To: (575) 397-0397

Reported:
18-Oct-19 11:44

Inorganic Compounds - Quality Control**Cardinal Laboratories**

Analyte	Result	Reporting Limit	Units	Spike Level	Source Result	%REC	%REC Limits	RPD	RPD Limit	Notes
---------	--------	-----------------	-------	-------------	---------------	------	-------------	-----	-----------	-------

Batch 9101515 - 1:4 DI Water**Blank (9101515-BLK1)**

Prepared & Analyzed: 15-Oct-19

Chloride	ND	16.0	mg/kg							
----------	----	------	-------	--	--	--	--	--	--	--

LCS (9101515-BS1)

Prepared & Analyzed: 15-Oct-19

Chloride	416	16.0	mg/kg	400		104	80-120			
----------	-----	------	-------	-----	--	-----	--------	--	--	--

LCS Dup (9101515-BSD1)

Prepared & Analyzed: 15-Oct-19

Chloride	432	16.0	mg/kg	400		108	80-120	3.77	20	
----------	-----	------	-------	-----	--	-----	--------	------	----	--

Batch 9101521 - 1:4 DI Water**Blank (9101521-BLK1)**

Prepared & Analyzed: 15-Oct-19

Chloride	ND	16.0	mg/kg							
----------	----	------	-------	--	--	--	--	--	--	--

LCS (9101521-BS1)

Prepared & Analyzed: 15-Oct-19

Chloride	416	16.0	mg/kg	400		104	80-120			
----------	-----	------	-------	-----	--	-----	--------	--	--	--

LCS Dup (9101521-BSD1)

Prepared & Analyzed: 15-Oct-19

Chloride	432	16.0	mg/kg	400		108	80-120	3.77	20	
----------	-----	------	-------	-----	--	-----	--------	------	----	--

Batch 9101606 - 1:4 DI Water**Blank (9101606-BLK1)**

Prepared & Analyzed: 16-Oct-19

Chloride	ND	16.0	mg/kg							
----------	----	------	-------	--	--	--	--	--	--	--

LCS (9101606-BS1)

Prepared & Analyzed: 16-Oct-19

Chloride	416	16.0	mg/kg	400		104	80-120			
----------	-----	------	-------	-----	--	-----	--------	--	--	--

Cardinal Laboratories

*=Accredited Analyte

PLEASE NOTE: Liability and Damages. Cardinal's liability and client's exclusive remedy for any claim arising, whether based in contract or tort, shall be limited to the amount paid by client for analyses. All claims, including those for negligence or any other cause whatsoever shall be deemed waived unless made in writing and received by Cardinal within thirty (30) days after completion of the applicable service. In no event shall Cardinal be liable for incidental or consequential damage including, without limitation, business interruptions, loss of use, or loss of profits incurred by client, its subsidiaries, affiliates or successors arising out of or related to the performance of the services hereunder by Cardinal, regardless of whether such claim is based upon any of the above stated reasons or otherwise. Results relate only to the samples identified above. This report shall not be reproduced except in full with written approval of Cardinal Laboratories.

Celey D. Keene, Lab Director/Quality Manager



PHONE (575) 393-2326 ° 101 E. MARLAND ° HOBBS, NM 88240

Analytical Results For:

BBC International, Inc.
P.O. Box 805
Hobbs NM, 88241

Project: MESQUITE MOUTRAY SWD
Project Number: 6/26/2019
Project Manager: Cliff Brunson
Fax To: (575) 397-0397

Reported:
18-Oct-19 11:44

Inorganic Compounds - Quality Control**Cardinal Laboratories**

Analyte	Result	Reporting Limit	Units	Spike Level	Source Result	%REC	%REC Limits	RPD	RPD Limit	Notes
---------	--------	--------------------	-------	----------------	------------------	------	----------------	-----	--------------	-------

Batch 9101606 - 1:4 DI Water**LCS Dup (9101606-BSD1)**

Prepared & Analyzed: 16-Oct-19

Chloride	400	16.0	mg/kg	400		100	80-120	3.92	20	
----------	-----	------	-------	-----	--	-----	--------	------	----	--

Cardinal Laboratories

*=Accredited Analyte

PLEASE NOTE: Liability and Damages. Cardinal's liability and client's exclusive remedy for any claim arising, whether based in contract or tort, shall be limited to the amount paid by client for analyses. All claims, including those for negligence or any other cause whatsoever shall be deemed waived unless made in writing and received by Cardinal within thirty (30) days after completion of the applicable service. In no event shall Cardinal be liable for incidental or consequential damage including, without limitation, business interruptions, loss of use, or loss of profits incurred by client, its subsidiaries, affiliates or successors arising out of or related to the performance of the services hereunder by Cardinal, regardless of whether such claim is based upon any of the above stated reasons or otherwise. Results relate only to the samples identified above. This report shall not be reproduced except in full with written approval of Cardinal Laboratories.

Celey D. Keene, Lab Director/Quality Manager



PHONE (575) 393-2326 ° 101 E. MARLAND ° HOBBS, NM 88240

Analytical Results For:

BBC International, Inc.
P.O. Box 805
Hobbs NM, 88241

Project: MESQUITE MOUTRAY SWD
Project Number: 6/26/2019
Project Manager: Cliff Brunson
Fax To: (575) 397-0397

Reported:
18-Oct-19 11:44

Volatile Organic Compounds by EPA Method 8021 - Quality Control**Cardinal Laboratories**

Analyte	Result	Reporting Limit	Units	Spike Level	Source Result	%REC	%REC Limits	RPD	RPD Limit	Notes
---------	--------	-----------------	-------	-------------	---------------	------	-------------	-----	-----------	-------

Batch 9101404 - Volatiles**Blank (9101404-BLK1)**

Prepared: 14-Oct-19 Analyzed: 15-Oct-19

Benzene	ND	0.050	mg/kg							
Toluene	ND	0.050	mg/kg							
Ethylbenzene	ND	0.050	mg/kg							
Total Xylenes	ND	0.150	mg/kg							
Total BTEX	ND	0.300	mg/kg							

Surrogate: 4-Bromofluorobenzene (PID) 0.100 mg/kg 0.100 100 73.3-129

LCS (9101404-BS1)

Prepared: 14-Oct-19 Analyzed: 15-Oct-19

Benzene	1.95	0.050	mg/kg	2.00		97.4	72.2-131			
Toluene	2.02	0.050	mg/kg	2.00		101	71.7-126			
Ethylbenzene	1.97	0.050	mg/kg	2.00		98.7	68.9-126			
Total Xylenes	6.04	0.150	mg/kg	6.00		101	71.4-125			

Surrogate: 4-Bromofluorobenzene (PID) 0.0972 mg/kg 0.100 97.2 73.3-129

LCS Dup (9101404-BSD1)

Prepared: 14-Oct-19 Analyzed: 15-Oct-19

Benzene	1.93	0.050	mg/kg	2.00		96.3	72.2-131	1.13	6.91	
Toluene	2.00	0.050	mg/kg	2.00		99.9	71.7-126	0.971	7.12	
Ethylbenzene	1.96	0.050	mg/kg	2.00		98.1	68.9-126	0.572	7.88	
Total Xylenes	5.96	0.150	mg/kg	6.00		99.3	71.4-125	1.42	7.46	

Surrogate: 4-Bromofluorobenzene (PID) 0.0966 mg/kg 0.100 96.6 73.3-129

Batch 9101507 - Volatiles**Blank (9101507-BLK1)**

Prepared & Analyzed: 15-Oct-19

Benzene	ND	0.050	mg/kg							
Toluene	ND	0.050	mg/kg							
Ethylbenzene	ND	0.050	mg/kg							
Total Xylenes	ND	0.150	mg/kg							
Total BTEX	ND	0.300	mg/kg							

Surrogate: 4-Bromofluorobenzene (PID) ND mg/kg 0.0500 97.5 73.3-129

Cardinal Laboratories

*=Accredited Analyte

PLEASE NOTE: Liability and Damages. Cardinal's liability and client's exclusive remedy for any claim arising, whether based in contract or tort, shall be limited to the amount paid by client for analyses. All claims, including those for negligence or any other cause whatsoever shall be deemed waived unless made in writing and received by Cardinal within thirty (30) days after completion of the applicable service. In no event shall Cardinal be liable for incidental or consequential damage including, without limitation, business interruptions, loss of use, or loss of profits incurred by client, its subsidiaries, affiliates or successors arising out of or related to the performance of the services hereunder by Cardinal, regardless of whether such claim is based upon any of the above stated reasons or otherwise. Results relate only to the samples identified above. This report shall not be reproduced except in full with written approval of Cardinal Laboratories.

Celey D. Keene, Lab Director/Quality Manager



PHONE (575) 393-2326 • 101 E. MARLAND • HOBBS, NM 88240

Analytical Results For:

BBC International, Inc.
P.O. Box 805
Hobbs NM, 88241

Project: MESQUITE MOUTRAY SWD
Project Number: 6/26/2019
Project Manager: Cliff Brunson
Fax To: (575) 397-0397

Reported:
18-Oct-19 11:44

Volatile Organic Compounds by EPA Method 8021 - Quality Control**Cardinal Laboratories**

Analyte	Result	Reporting Limit	Units	Spike Level	Source Result	%REC	%REC Limits	RPD	RPD Limit	Notes
---------	--------	-----------------	-------	-------------	---------------	------	-------------	-----	-----------	-------

Batch 9101507 - Volatiles**LCS (9101507-BS1)**

Prepared & Analyzed: 15-Oct-19

Benzene	1.94	0.050	mg/kg	2.00		96.9	72.2-131			
Toluene	1.95	0.050	mg/kg	2.00		97.3	71.7-126			
Ethylbenzene	1.96	0.050	mg/kg	2.00		98.1	68.9-126			
Total Xylenes	5.89	0.150	mg/kg	6.00		98.1	71.4-125			
Surrogate: 4-Bromofluorobenzene (PID)	0.0474		mg/kg	0.0500		94.8	73.3-129			

LCS Dup (9101507-BSD1)

Prepared & Analyzed: 15-Oct-19

Benzene	1.89	0.050	mg/kg	2.00		94.5	72.2-131	2.55	6.91	
Toluene	1.92	0.050	mg/kg	2.00		95.8	71.7-126	1.46	7.12	
Ethylbenzene	1.93	0.050	mg/kg	2.00		96.6	68.9-126	1.60	7.88	
Total Xylenes	5.79	0.150	mg/kg	6.00		96.6	71.4-125	1.61	7.46	
Surrogate: 4-Bromofluorobenzene (PID)	0.0487		mg/kg	0.0500		97.4	73.3-129			

Batch 9101701 - Volatiles**Blank (9101701-BLK1)**

Prepared & Analyzed: 17-Oct-19

Benzene	ND	0.050	mg/kg							
Toluene	ND	0.050	mg/kg							
Ethylbenzene	ND	0.050	mg/kg							
Total Xylenes	ND	0.150	mg/kg							
Total BTEX	ND	0.300	mg/kg							
Surrogate: 4-Bromofluorobenzene (PID)	0.0962		mg/kg	0.100		96.2	73.3-129			

LCS (9101701-BS1)

Prepared & Analyzed: 17-Oct-19

Benzene	1.65	0.050	mg/kg	2.00		82.5	72.2-131			
Toluene	1.69	0.050	mg/kg	2.00		84.7	71.7-126			
Ethylbenzene	1.65	0.050	mg/kg	2.00		82.7	68.9-126			
Total Xylenes	4.98	0.150	mg/kg	6.00		82.9	71.4-125			
Surrogate: 4-Bromofluorobenzene (PID)	0.0946		mg/kg	0.100		94.6	73.3-129			

Cardinal Laboratories

*=Accredited Analyte

PLEASE NOTE: Liability and Damages. Cardinal's liability and client's exclusive remedy for any claim arising, whether based in contract or tort, shall be limited to the amount paid by client for analyses. All claims, including those for negligence or any other cause whatsoever shall be deemed waived unless made in writing and received by Cardinal within thirty (30) days after completion of the applicable service. In no event shall Cardinal be liable for incidental or consequential damage including, without limitation, business interruptions, loss of use, or loss of profits incurred by client, its subsidiaries, affiliates or successors arising out of or related to the performance of the services hereunder by Cardinal, regardless of whether such claim is based upon any of the above stated reasons or otherwise. Results relate only to the samples identified above. This report shall not be reproduced except in full with written approval of Cardinal Laboratories.

Celey D. Keene, Lab Director/Quality Manager



PHONE (575) 393-2326 ° 101 E. MARLAND ° HOBBS, NM 88240

Analytical Results For:

BBC International, Inc.
P.O. Box 805
Hobbs NM, 88241

Project: MESQUITE MOUTRAY SWD
Project Number: 6/26/2019
Project Manager: Cliff Brunson
Fax To: (575) 397-0397

Reported:
18-Oct-19 11:44

Volatile Organic Compounds by EPA Method 8021 - Quality Control**Cardinal Laboratories**

Analyte	Result	Reporting Limit	Units	Spike Level	Source Result	%REC	%REC Limits	RPD	RPD Limit	Notes
---------	--------	-----------------	-------	-------------	---------------	------	-------------	-----	-----------	-------

Batch 9101701 - Volatiles**LCS Dup (9101701-BSD1)**

Prepared & Analyzed: 17-Oct-19

Benzene	1.58	0.050	mg/kg	2.00		79.1	72.2-131	4.24	6.91	
Toluene	1.66	0.050	mg/kg	2.00		82.9	71.7-126	2.07	7.12	
Ethylbenzene	1.59	0.050	mg/kg	2.00		79.5	68.9-126	3.95	7.88	
Total Xylenes	4.82	0.150	mg/kg	6.00		80.3	71.4-125	3.25	7.46	
Surrogate: 4-Bromofluorobenzene (PID)	0.0958		mg/kg	0.100		95.8	73.3-129			

Batch 9101703 - Volatiles**Blank (9101703-BLK1)**

Prepared & Analyzed: 17-Oct-19

Benzene	ND	0.050	mg/kg							
Toluene	ND	0.050	mg/kg							
Ethylbenzene	ND	0.050	mg/kg							
Total Xylenes	ND	0.150	mg/kg							
Total BTEX	ND	0.300	mg/kg							
Surrogate: 4-Bromofluorobenzene (PID)	ND		mg/kg	0.0500		98.8	73.3-129			

LCS (9101703-BS1)

Prepared & Analyzed: 17-Oct-19

Benzene	1.59	0.050	mg/kg	2.00		79.3	72.2-131			
Toluene	1.58	0.050	mg/kg	2.00		78.8	71.7-126			
Ethylbenzene	1.61	0.050	mg/kg	2.00		80.3	68.9-126			
Total Xylenes	4.82	0.150	mg/kg	6.00		80.4	71.4-125			
Surrogate: 4-Bromofluorobenzene (PID)	0.0487		mg/kg	0.0500		97.3	73.3-129			

LCS Dup (9101703-BSD1)

Prepared & Analyzed: 17-Oct-19

Benzene	1.60	0.050	mg/kg	2.00		80.0	72.2-131	0.819	6.91	
Toluene	1.59	0.050	mg/kg	2.00		79.6	71.7-126	1.02	7.12	
Ethylbenzene	1.62	0.050	mg/kg	2.00		81.1	68.9-126	0.941	7.88	
Total Xylenes	4.85	0.150	mg/kg	6.00		80.9	71.4-125	0.635	7.46	
Surrogate: 4-Bromofluorobenzene (PID)	0.0486		mg/kg	0.0500		97.2	73.3-129			

Cardinal Laboratories

*=Accredited Analyte

PLEASE NOTE: Liability and Damages. Cardinal's liability and client's exclusive remedy for any claim arising, whether based in contract or tort, shall be limited to the amount paid by client for analyses. All claims, including those for negligence or any other cause whatsoever shall be deemed waived unless made in writing and received by Cardinal within thirty (30) days after completion of the applicable service. In no event shall Cardinal be liable for incidental or consequential damage including, without limitation, business interruptions, loss of use, or loss of profits incurred by client, its subsidiaries, affiliates or successors arising out of or related to the performance of the services hereunder by Cardinal, regardless of whether such claim is based upon any of the above stated reasons or otherwise. Results relate only to the samples identified above. This report shall not be reproduced except in full with written approval of Cardinal Laboratories.

Celey D. Keene, Lab Director/Quality Manager



PHONE (575) 393-2326 • 101 E. MARLAND • HOBBS, NM 88240

Analytical Results For:

BBC International, Inc.
P.O. Box 805
Hobbs NM, 88241

Project: MESQUITE MOUTRAY SWD
Project Number: 6/26/2019
Project Manager: Cliff Brunson
Fax To: (575) 397-0397

Reported:
18-Oct-19 11:44

Petroleum Hydrocarbons by GC FID - Quality Control**Cardinal Laboratories**

Analyte	Result	Reporting Limit	Units	Spike Level	Source Result	%REC	%REC Limits	RPD	RPD Limit	Notes
---------	--------	-----------------	-------	-------------	---------------	------	-------------	-----	-----------	-------

Batch 9101401 - General Prep - Organics**Blank (9101401-BLK1)**

Prepared & Analyzed: 14-Oct-19

GRO C6-C10	ND	10.0	mg/kg							
DRO >C10-C28	ND	10.0	mg/kg							
EXT DRO >C28-C36	ND	10.0	mg/kg							
Surrogate: 1-Chlorooctane	48.8		mg/kg	50.0		97.7	41-142			
Surrogate: 1-Chlorooctadecane	46.2		mg/kg	50.0		92.4	37.6-147			

LCS (9101401-BS1)

Prepared & Analyzed: 14-Oct-19

GRO C6-C10	210	10.0	mg/kg	200		105	76.5-133			
DRO >C10-C28	213	10.0	mg/kg	200		106	72.9-138			
Total TPH C6-C28	423	10.0	mg/kg	400		106	78-132			
Surrogate: 1-Chlorooctane	53.4		mg/kg	50.0		107	41-142			
Surrogate: 1-Chlorooctadecane	49.3		mg/kg	50.0		98.7	37.6-147			

LCS Dup (9101401-BS1)

Prepared & Analyzed: 14-Oct-19

GRO C6-C10	215	10.0	mg/kg	200		107	76.5-133	2.10	20.6	
DRO >C10-C28	211	10.0	mg/kg	200		105	72.9-138	1.03	20.6	
Total TPH C6-C28	425	10.0	mg/kg	400		106	78-132	0.540	18	
Surrogate: 1-Chlorooctane	55.7		mg/kg	50.0		111	41-142			
Surrogate: 1-Chlorooctadecane	52.0		mg/kg	50.0		104	37.6-147			

Batch 9101413 - General Prep - Organics**Blank (9101413-BLK1)**

Prepared & Analyzed: 14-Oct-19

GRO C6-C10	ND	10.0	mg/kg							
DRO >C10-C28	ND	10.0	mg/kg							
EXT DRO >C28-C36	ND	10.0	mg/kg							
Surrogate: 1-Chlorooctane	60.2		mg/kg	50.0		120	41-142			
Surrogate: 1-Chlorooctadecane	61.5		mg/kg	50.0		123	37.6-147			

Cardinal Laboratories

*=Accredited Analyte

PLEASE NOTE: Liability and Damages. Cardinal's liability and client's exclusive remedy for any claim arising, whether based in contract or tort, shall be limited to the amount paid by client for analyses. All claims, including those for negligence or any other cause whatsoever shall be deemed waived unless made in writing and received by Cardinal within thirty (30) days after completion of the applicable service. In no event shall Cardinal be liable for incidental or consequential damage including, without limitation, business interruptions, loss of use, or loss of profits incurred by client, its subsidiaries, affiliates or successors arising out of or related to the performance of the services hereunder by Cardinal, regardless of whether such claim is based upon any of the above stated reasons or otherwise. Results relate only to the samples identified above. This report shall not be reproduced except in full with written approval of Cardinal Laboratories.

Celey D. Keene, Lab Director/Quality Manager



PHONE (575) 393-2326 • 101 E. MARLAND • HOBBS, NM 88240

Analytical Results For:

BBC International, Inc.
P.O. Box 805
Hobbs NM, 88241

Project: MESQUITE MOUTRAY SWD
Project Number: 6/26/2019
Project Manager: Cliff Brunson
Fax To: (575) 397-0397

Reported:
18-Oct-19 11:44

Petroleum Hydrocarbons by GC FID - Quality Control**Cardinal Laboratories**

Analyte	Result	Reporting Limit	Units	Spike Level	Source Result	%REC	%REC Limits	RPD	RPD Limit	Notes
---------	--------	-----------------	-------	-------------	---------------	------	-------------	-----	-----------	-------

Batch 9101413 - General Prep - Organics**LCS (9101413-BS1)**

Prepared & Analyzed: 14-Oct-19

GRO C6-C10	212	10.0	mg/kg	200		106	76.5-133			
DRO >C10-C28	214	10.0	mg/kg	200		107	72.9-138			
Total TPH C6-C28	425	10.0	mg/kg	400		106	78-132			
Surrogate: 1-Chlorooctane	53.9		mg/kg	50.0		108	41-142			
Surrogate: 1-Chlorooctadecane	50.7		mg/kg	50.0		101	37.6-147			

LCS Dup (9101413-BSD1)

Prepared & Analyzed: 14-Oct-19

GRO C6-C10	215	10.0	mg/kg	200		107	76.5-133	1.45	20.6	
DRO >C10-C28	211	10.0	mg/kg	200		105	72.9-138	1.46	20.6	
Total TPH C6-C28	425	10.0	mg/kg	400		106	78-132	0.00253	18	
Surrogate: 1-Chlorooctane	56.5		mg/kg	50.0		113	41-142			
Surrogate: 1-Chlorooctadecane	53.1		mg/kg	50.0		106	37.6-147			

Batch 9101501 - General Prep - Organics**Blank (9101501-BLK1)**

Prepared & Analyzed: 15-Oct-19

GRO C6-C10	ND	10.0	mg/kg							
DRO >C10-C28	ND	10.0	mg/kg							
EXT DRO >C28-C36	ND	10.0	mg/kg							
Surrogate: 1-Chlorooctane	49.6		mg/kg	50.0		99.2	41-142			
Surrogate: 1-Chlorooctadecane	52.5		mg/kg	50.0		105	37.6-147			

LCS (9101501-BS1)

Prepared & Analyzed: 15-Oct-19

GRO C6-C10	195	10.0	mg/kg	200		97.5	76.5-133			
DRO >C10-C28	205	10.0	mg/kg	200		103	72.9-138			
Total TPH C6-C28	400	10.0	mg/kg	400		100	78-132			
Surrogate: 1-Chlorooctane	57.9		mg/kg	50.0		116	41-142			
Surrogate: 1-Chlorooctadecane	59.5		mg/kg	50.0		119	37.6-147			

Cardinal Laboratories

*=Accredited Analyte

PLEASE NOTE: Liability and Damages. Cardinal's liability and client's exclusive remedy for any claim arising, whether based in contract or tort, shall be limited to the amount paid by client for analyses. All claims, including those for negligence or any other cause whatsoever shall be deemed waived unless made in writing and received by Cardinal within thirty (30) days after completion of the applicable service. In no event shall Cardinal be liable for incidental or consequential damage including, without limitation, business interruptions, loss of use, or loss of profits incurred by client, its subsidiaries, affiliates or successors arising out of or related to the performance of the services hereunder by Cardinal, regardless of whether such claim is based upon any of the above stated reasons or otherwise. Results relate only to the samples identified above. This report shall not be reproduced except in full with written approval of Cardinal Laboratories.

Celey D. Keene, Lab Director/Quality Manager



PHONE (575) 393-2326 • 101 E. MARLAND • HOBBS, NM 88240

Analytical Results For:

BBC International, Inc.
P.O. Box 805
Hobbs NM, 88241

Project: MESQUITE MOUTRAY SWD
Project Number: 6/26/2019
Project Manager: Cliff Brunson
Fax To: (575) 397-0397

Reported:
18-Oct-19 11:44

Petroleum Hydrocarbons by GC FID - Quality Control**Cardinal Laboratories**

Analyte	Result	Reporting Limit	Units	Spike Level	Source Result	%REC	%REC Limits	RPD	RPD Limit	Notes
---------	--------	-----------------	-------	-------------	---------------	------	-------------	-----	-----------	-------

Batch 9101501 - General Prep - Organics**LCS Dup (9101501-BSD1)**

Prepared & Analyzed: 15-Oct-19

GRO C6-C10	190	10.0	mg/kg	200		95.2	76.5-133	2.38	20.6	
DRO >C10-C28	194	10.0	mg/kg	200		97.0	72.9-138	5.68	20.6	
Total TPH C6-C28	385	10.0	mg/kg	400		96.1	78-132	4.06	18	
Surrogate: 1-Chlorooctane	57.3		mg/kg	50.0		115	41-142			
Surrogate: 1-Chlorooctadecane	58.2		mg/kg	50.0		116	37.6-147			

Batch 9101714 - General Prep - Organics**Blank (9101714-BLK1)**

Prepared & Analyzed: 17-Oct-19

GRO C6-C10	ND	10.0	mg/kg							
DRO >C10-C28	ND	10.0	mg/kg							
EXT DRO >C28-C36	ND	10.0	mg/kg							
Surrogate: 1-Chlorooctane	59.0		mg/kg	50.0		118	41-142			
Surrogate: 1-Chlorooctadecane	56.2		mg/kg	50.0		112	37.6-147			

LCS (9101714-BS1)

Prepared & Analyzed: 17-Oct-19

GRO C6-C10	218	10.0	mg/kg	200		109	76.5-133			
DRO >C10-C28	222	10.0	mg/kg	200		111	72.9-138			
Total TPH C6-C28	439	10.0	mg/kg	400		110	78-132			
Surrogate: 1-Chlorooctane	63.2		mg/kg	50.0		126	41-142			
Surrogate: 1-Chlorooctadecane	59.7		mg/kg	50.0		119	37.6-147			

LCS Dup (9101714-BSD1)

Prepared & Analyzed: 17-Oct-19

GRO C6-C10	221	10.0	mg/kg	200		111	76.5-133	1.58	20.6	
DRO >C10-C28	219	10.0	mg/kg	200		109	72.9-138	1.29	20.6	
Total TPH C6-C28	440	10.0	mg/kg	400		110	78-132	0.146	18	
Surrogate: 1-Chlorooctane	64.4		mg/kg	50.0		129	41-142			
Surrogate: 1-Chlorooctadecane	60.7		mg/kg	50.0		121	37.6-147			

Cardinal Laboratories

*=Accredited Analyte

PLEASE NOTE: Liability and Damages. Cardinal's liability and client's exclusive remedy for any claim arising, whether based in contract or tort, shall be limited to the amount paid by client for analyses. All claims, including those for negligence or any other cause whatsoever shall be deemed waived unless made in writing and received by Cardinal within thirty (30) days after completion of the applicable service. In no event shall Cardinal be liable for incidental or consequential damage including, without limitation, business interruptions, loss of use, or loss of profits incurred by client, its subsidiaries, affiliates or successors arising out of or related to the performance of the services hereunder by Cardinal, regardless of whether such claim is based upon any of the above stated reasons or otherwise. Results relate only to the samples identified above. This report shall not be reproduced except in full with written approval of Cardinal Laboratories.

Celey D. Keene, Lab Director/Quality Manager



PHONE (575) 393-2326 ° 101 E. MARLAND ° HOBBS, NM 88240

Notes and Definitions

S-04	The surrogate recovery for this sample is outside of established control limits due to a sample matrix effect.
QM-07	The spike recovery was outside acceptance limits for the MS and/or MSD. The batch was accepted based on acceptable LCS recovery.
ND	Analyte NOT DETECTED at or above the reporting limit
RPD	Relative Percent Difference
**	Samples not received at proper temperature of 6°C or below.
***	Insufficient time to reach temperature.
-	Chloride by SM4500Cl-B does not require samples be received at or below 6°C Samples reported on an as received basis (wet) unless otherwise noted on report

Cardinal Laboratories

*=Accredited Analyte

PLEASE NOTE: Liability and Damages. Cardinal's liability and client's exclusive remedy for any claim arising, whether based in contract or tort, shall be limited to the amount paid by client for analyses. All claims, including those for negligence or any other cause whatsoever shall be deemed waived unless made in writing and received by Cardinal within thirty (30) days after completion of the applicable service. In no event shall Cardinal be liable for incidental or consequential damage including, without limitation, business interruptions, loss of use, or loss of profits incurred by client, its subsidiaries, affiliates or successors arising out of or related to the performance of the services hereunder by Cardinal, regardless of whether such claim is based upon any of the above stated reasons or otherwise. Results relate only to the samples identified above. This report shall not be reproduced except in full with written approval of Cardinal Laboratories.

A handwritten signature in black ink, appearing to read "Celey D. Keene".

Celey D. Keene, Lab Director/Quality Manager

(505) 393-2326 FAX (505) 393-2476

CHAIN-OF-CUSTODY AND ANALYSIS REQUEST

† Cardinal cannot accept verbal changes. Please fax written changes to 505-393-2476

(505) 393-2326 FAX (505) 393-2476

CHAIN-OF-CUSTODY AND ANALYSIS REQUEST

 20×4

† Cardinal cannot accept verbal changes. Please fax written changes to 505-393-2476

**ARDINAL LABORATORIES**

101 East Marland, Hobbs, NM 88240

(505) 393-2326 FAX (505) 393-2476

CHAIN-OF-CUSTODY AND ANALYSIS REQUEST

3086

Company Name: BBC International, Inc.		BILL TO		ANALYSIS REQUEST																							
Project Manager: Cliff Brunson		P.O. #:		<div style="display: flex; justify-content: space-between;"> <div> Company: Oxy Attn: W. Dittich Address: City: State: Zip: Phone #: Fax #: </div> <div> <div style="writing-mode: vertical-rl; transform: rotate(180deg);">CL</div> <div style="writing-mode: vertical-rl; transform: rotate(180deg);">BTX</div> <div style="writing-mode: vertical-rl; transform: rotate(180deg);">TPHNT</div> </div> </div>																							
Address: P.O. Box 805		Company:																									
City: Hobbs State: NM Zip: 88241		Attn:																									
Phone #: 575-397-6388 Fax #: 575-397-0397		Address:																									
Project #: Project Owner: Oxy		City:																									
Project Name: Mesquite Moutray SWD (6/26/19)		State:																									
Project Location: Eddy County, NM		Zip:																									
Sampler Name: Jeff Ornelas		Phone #:																									
Fax #:																											
Lab I.D.	Sample I.D.	(GRAB OR C)OMP.	# CONTAINERS	MATRIX				PRESERV.		SAMPLING																	
				GROUNDWATER	WASTEWATER	SOIL	OIL	SLUDGE	OTHER :	ACID/BASE:	ICE / COOL	OTHER :	DATE	TIME													
H903469																											
21	SP4 @ 1'	G	1			✓					✓		10/4/19	2:20 PM	✓	✓	✓	Rush Added 10/17/19 @ 13:24 pm T.O.									
22	SP4 @ 2'												10/4/19	2:28 PM	✓												
23	SP4 @ 3'												10/4/19	2:40 PM	✓												
24	SP4 @ 4'												10/9/19	9:11 AM	✓												
25	SP4 @ 5'												10/9/19	9:22 AM	✓												
26	SP4 @ 6'												10/9/19	9:43 AM	✓												
27	SP5 @ SURFACE												10/9/19	9:59 AM	✓	✓	✓										
28	SP5 @ 1'												10/9/19	10:15 AM	✓	✓	✓										
29	SP5 @ 2'												10/9/19	10:27 AM	✓												
30	SP5 @ 3'												10/9/19	10:47 AM	✓												

PLEASE NOTE: Liability and Damages. Cardinal's liability and client's exclusive remedy for any claim arising whether based in contract or tort, shall be limited to the amount paid by the client for the analyses. All claims including those for negligence and any other cause whatsoever shall be deemed waived unless made in writing and received by Cardinal within 30 days after completion of the applicable service. In no event shall Cardinal be liable for incidental or consequential damages, including without limitation, business interruptions, loss of use, or loss of profits incurred by client, its subsidiaries, affiliates or successors arising out of or related to the performance of services hereunder by Cardinal, regardless of whether such claim is based upon any of the above stated reasons or otherwise.

Relinquished By:	Date: 10/10/19 Time: 5:00pm	Received By:	Phone Result: <input type="checkbox"/> Yes <input type="checkbox"/> No	Add'l Phone #:
Relinquished By:	Date:	Received By:	Fax Result: <input type="checkbox"/> Yes <input type="checkbox"/> No	Add'l Fax #:
	Time:		REMARKS:	
Delivered By: (Circle One) Sampler - UPS - Bus - Other: -3.80 -3.40 #97	Sample Condition Cool Intact <input type="checkbox"/> Yes <input checked="" type="checkbox"/> No	CHECKED BY: (Initials) 		

† Cardinal cannot accept verbal changes. Please fax written changes to 505-393-2476

**CARDINAL LABORATORIES**

101 East Marland, Hobbs, NM 88240

(505) 393-2326 FAX (505) 393-2476

CHAIN-OF-CUSTODY AND ANALYSIS REQUEST

4086

Company Name: BBC International, Inc.				BILL TO				ANALYSIS REQUEST											
Project Manager: Cliff Brunson				P.O. #:															
Address: P.O. Box 805				Company: <i>Oxy</i>															
City: Hobbs		State: NM Zip: 88241		Attn: <i>W. D. Hirsch</i>															
Phone #: 575-397-6388		Fax #: 575-397-0397		Address:															
Project #:		Project Owner: Oxy		City:															
Project Name: Mesquite Moutray SWD (6/26/19)				State: Zip:															
Project Location: Eddy County, NM				Phone #:															
Sampler Name: Jeff Ornelas				Fax #:															
FOR LAB USE ONLY																			
Lab I.D.		Sample I.D.		(GRAB OR (COMP. # CONTAINERS		MATRIX		PRESERV.		SAMPLING									
						GROUNDWATER													
						WASTEWATER													
						SOIL													
						OIL													
						SLUDGE													
						OTHER :													
						ACID/BASE:													
						ICE / COOL													
						OTHER :													
										DATE		TIME							
<i>H903469</i>				<i>6</i>															
<i>31</i>		SP5 @ 4'		<i>1</i>															
<i>32</i>		SP5 @ 5'																	
<i>33</i>		SP5 @ 6'																	
<i>34</i>		SP6 @ SURFACE																	
<i>35</i>		SP6 @ 1'																	
<i>36</i>		SP6 @ 2'																	
<i>37</i>		SP6 @ 3'																	
<i>38</i>		SP6 @ 4'																	
<i>39</i>		SP6 @ 5'																	
<i>40</i>		SP6 @ 6'																	

PLEASE NOTE: Liability and Damages. Cardinal's liability and client's exclusive remedy for any claim arising whether based in contract or tort, shall be limited to the amount paid by the client for the analyses. All claims, including those for negligence and any other cause whatsoever shall be deemed waived unless made in writing and received by Cardinal within 30 days after completion of the applicable service. In no event shall Cardinal be liable for incidental or consequential damages, including without limitation, business interruptions, loss of use, or loss of profits incurred by client, its subsidiaries, affiliates or successors arising out of or related to the performance of services hereunder by Cardinal, regardless of whether such claim is based upon any of the above stated reasons or otherwise.

Relinquished By: <i>Jeff Ornelas</i>		Date: <i>10/10/19</i>		Received By: <i>Jodi Benson</i>		Phone Result: <input type="checkbox"/> Yes <input type="checkbox"/> No		Add'l Phone #:	
		Time: <i>5:00 PM</i>				Fax Result: <input type="checkbox"/> Yes <input type="checkbox"/> No		Add'l Fax #:	
Relinquished By:		Date:		Received By:		REMARKS:			
		Time:							
Delivered By: (Circle One)				Sample Condition		CHECKED BY:			
Sampler - UPS - Bus - Other: <i>-3.8e -3.4e #97</i>				Cool <input checked="" type="checkbox"/> Intact <input checked="" type="checkbox"/>		Initials: <i>JA</i>			
				Yes <input type="checkbox"/> No <input type="checkbox"/>					

† Cardinal cannot accept verbal changes. Please fax written changes to 505-393-2476

**CARDINAL LABORATORIES**

101 East Marland, Hobbs, NM 88240

(505) 393-2326 FAX (505) 393-2476

CHAIN-OF-CUSTODY AND ANALYSIS REQUEST

5086

Company Name: BBC International, Inc.				BILL TO				ANALYSIS REQUEST																	
Project Manager: Cliff Brunson				P.O. #:																					
Address: P.O. Box 805				Company: Oxy																					
City: Hobbs		State: NM		Zip: 88241		Attn: W. Strick																			
Phone #: 575-397-6388		Fax #: 575-397-0397		Address:																					
Project #:		Project Owner: Oxy		City:																					
Project Name: Mesquite Moutray SWD (6/26/19)				State:		Zip:																			
Project Location: Eddy County, NM				Phone #:																					
Sampler Name: Jeff Ornelas				Fax #:																					
FOR LAB USE ONLY																									
Lab I.D.		Sample I.D.		(GRAB OR (COMP. # CONTAINERS		MATRIX				PRESERV.		SAMPLING													
						GROUNDWATER WASTEWATER SOIL OIL SLUDGE OTHER :				ACID/BASE: ICE / COOL OTHER :		DATE TIME													
H903469		SP7 @ SURFACE		G								10/9/19 1:25 PM		✓											
41		SP7 @ 1'										10/9/19 1:35 PM		✓											
42		SP7 @ 2'										10/9/19 1:45 PM		✓											
43		SP7 @ 3'										10/9/19 2:01 PM		✓											
44		SP7 @ 4'										10/9/19 2:22 PM		✓											
45		SP7 @ 5'										10/9/19 2:32 PM		✓											
46		SP7 @ 6'										10/9/19 2:39 PM		✓											
47		SP7 @ 7'										10/10/19 9:20 AM		✓											
48		SP7 @ 8'										10/10/19 9:49 AM		✓											
49		SP7 @ 9'										10/10/19 10:30 AM		✓											
50																									

PLEASE NOTE: Liability and Damages. Cardinal's liability and client's exclusive remedy for any claim arising whether based in contract or tort, shall be limited to the amount paid by the client for the analyses. All claims, including those for negligence and any other cause whatsoever shall be deemed waived unless made in writing and received by Cardinal within 30 days after completion of the applicable service. In no event shall Cardinal be liable for incidental or consequential damages, including without limitation, business interruptions, loss of use, or loss of profits incurred by client, its subsidiaries, affiliates or successors arising out of or related to the performance of services hereunder by Cardinal, regardless of whether such claim is based upon any of the above stated reasons or otherwise.

Relinquished By:		Date: 10/10/19		Received By:		Phone Result: <input type="checkbox"/> Yes <input type="checkbox"/> No		Add'l Phone #:	
		Time: 5:00pm				Fax Result: <input type="checkbox"/> Yes <input type="checkbox"/> No		Add'l Fax #:	
Relinquished By:		Date:		Received By:		REMARKS:			
		Time:							
Delivered By: (Circle One)						Sample Condition		CHECKED BY:	
Sampler - UPS - Bus - Other: -380 -340 #97						Cool <input checked="" type="checkbox"/> Intact <input checked="" type="checkbox"/>		(Initials)	
						Yes <input type="checkbox"/> No <input type="checkbox"/>			

† Cardinal cannot accept verbal changes. Please fax written changes to 505-393-2476

(505) 393-2326 FAX (505) 393-2476

6 of 6

PLEASE NOTE: Liability and Damages. Cardinal's liability and client's exclusive remedy for any claim arising whether based in contract or tort, shall be limited to the amount paid by the client for the analyses. All claims, including those for negligence and any other cause whatsoever shall be deemed waived unless made in writing and received by Cardinal within 30 days after completion of the applicable service. In no event shall Cardinal be liable for incidental or consequential damages, including without limitation, business interruptions, loss of use, or loss of profits incurred by client, its subsidiaries, affiliates or successors arising out of or related to the performance of services hereunder by Cardinal, regardless of whether such claim is based upon any of the above stated reasons or otherwise.

† Cardinal cannot accept verbal changes. Please fax written changes to 505-393-2476