

District I  
PO Box 1980, Hobbs, NM 88241-1980  
District II  
811 South First, Artesia, NM 88210  
District III  
1000 Rio Brazos Rd., Aztec, NM 87410  
District IV  
2040 South Pacheco, Santa Fe, NM 87505

State of New Mexico  
Energy, Minerals & Natural Resources Department

OIL CONSERVATION DIVISION  
2040 South Pacheco  
Santa Fe, NM 87505

Form C-101  
Revised October 18, 1994  
Instructions on back  
Submit to Appropriate District Office  
State Lease - 6 Copies  
Fee Lease - 5 Copies

☐ AMENDED REPORT

APPLICATION FOR PERMIT TO DRILL, RE-ENTER, DEEPEN, PLUGBACK, OR ADD A ZONE

Operator Name and Address Mewbourne Oil Company P.O. Box 5270 Hobbs, NM 88241 (505)393-5905		RECEIVED APR 08 2004	OGRID Number 14744
			API Number 30 - 0 15-33382
Property Code 33795	Property Name Justice Federal Com	OCD-ARTESIA	Well No. 1

Surface Location

UL or lot no.	Section	Township	Range	Lot Idn	Feet from the	North/South line	Feet from the	East/West Line	County
14	1	21S	27E		3300	South	1650	West	Eddy

Proposed Bottom Hole Location If Different From Surface

UL or lot no.	Section	Township	Range	Lot Idn	Feet from the	North/South
Proposed Pool 1 Unders. Burton Flat; Morrow						

NOTIFY OCD SPUD & TIME TO WITNESS 5/8" CASING

Work Type Code	Well Type Code	Cable/Rotary	Lease Type Code	Ground Level Elevation
N	G	R	P	3194
Multiple	Proposed Depth	Formation	Contractor	Spud Date
No	11800	Morrow	TBA	05-05-04

Proposed Casing and Cement Program

Hole Size	Casing Size	Casing weight/foot	Setting Depth	Sacks of Cement	Estimated TOC
17-1/2"	13-3/8"	48#	400	400	Circ. to Surface
12-1/4"	9-5/8"	40#	2600	1000	Circ. to Surface
8-3/4"	5-1/2"	17#	11800	600	500' Above Wolfcamp *

Describe the proposed program. If this application is to DEEPEN or PLUG BACK give the data on the present productive zone and proposed new productive zone. Describe the blowout prevention program, if any. Use additional sheets if necessary.

BOP Program : 2K Hydriil (See Exhibit #2) from surface casing to intermediate TD. Schaffer LWS or equivalent (Double-Ram Hydraulic) 1500 series with Hydriil 900 series (See Exhibit #2A) from intermediate casing to total depth. Rotating Head, PVT, Flow Monitors, and mud gas Sperator from the Wolfcamp to TD.

Mud Program: 0 to 400' Fresh Water, spud mud, lime for PH, and LCM as needed for seepage.  
400' to 2600' Fresh Water, lime for PH, and LCM as needed for seepage.  
2600 to TD 9.3 to 10# Brine, Caustic for PH, Starch for WL Control, and LCM as needed for seepage.

I hereby certify that the information given above is true and complete to the best of my knowledge and belief.

Signature: *Terry Burke*  
Printed name: Terry Burke

Title: Drilling Foreman

OIL CONSERVATION DIVISION

Approved By: *[Signature]*

Title: District Supervisor

Approval Date: APR 09 2004

Expiration Date: APR 09 2009

\* Cement to cover all oil, gas and water bearing zones.

**DISTRICT I**  
1625 N. French Dr., Hobbs, NM 88240

**DISTRICT II**  
811 South First, Artesia, NM 88210

**DISTRICT III**  
1000 Rio Brazos Rd., Aztec, NM 87410

**DISTRICT IV**  
2040 South Pacheco, Santa Fe, NM 87505

State of New Mexico  
Energy, Minerals and Natural Resources Department

Form C-102  
Revised March 17, 1999  
Instruction on back  
Submit to Appropriate District Office  
State Lease - 4 Copies  
Fee Lease - 3 Copies

**OIL CONSERVATION DIVISION**  
P.O. Box 2088  
Santa Fe, New Mexico 87504-2088

☐ AMENDED REPORT

**WELL LOCATION AND ACREAGE DEDICATION PLAT**

API Number		Pool Code	Pool Name Burton Flat Morrow
Property Code	Property Name JUSTICE Federal Com		Well Number #1
OGRID No. 14744	Operator Name MEWBOURNE OIL COMPANY		Elevation 3194

**Surface Location**

UL or lot No.	Section	Township	Range	Lot Idn	Feet from the	North/South line	Feet from the	East/West line	County
LOT 14	1	21S	27E		3300	SOUTH	1650	WEST	EDDY

**Bottom Hole Location If Different From Surface**

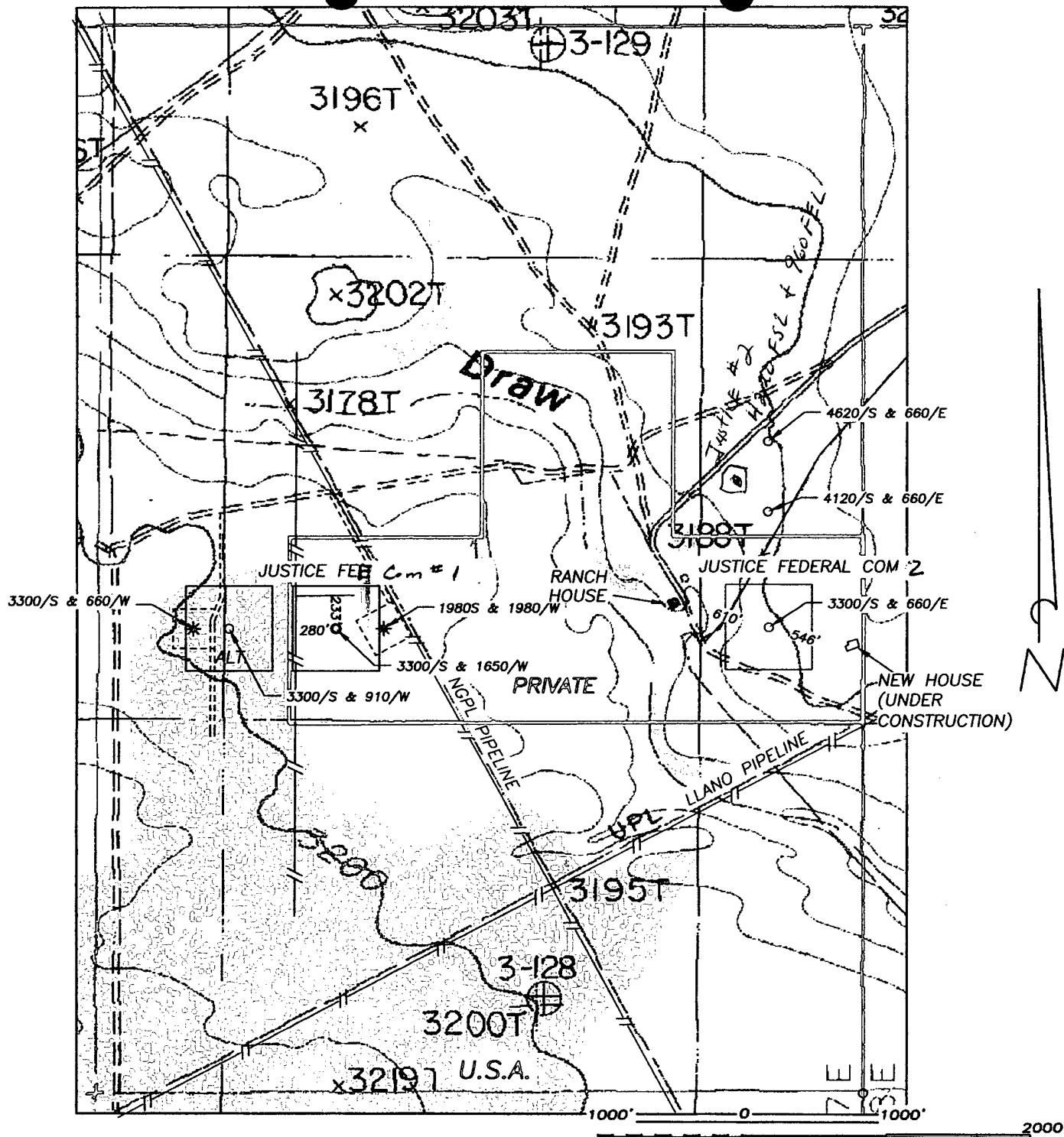
UL or lot No.	Section	Township	Range	Lot Idn	Feet from the	North/South line	Feet from the	East/West line	County
Dedicated Acres 320		Joint or Infill		Consolidation Code		Order No.			

**NO ALLOWABLE WILL BE ASSIGNED TO THIS COMPLETION UNTIL ALL INTERESTS HAVE BEEN CONSOLIDATED  
OR A NON-STANDARD UNIT HAS BEEN APPROVED BY THE DIVISION**

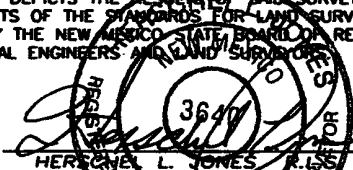
				<p><b>OPERATOR CERTIFICATION</b></p> <p>I hereby certify the the information contained herein is true and complete to the best of my knowledge and belief.</p> <p><i>Terry Burke</i> Signature</p> <p>Terry Burke Printed Name</p> <p>Drilling Foreman Title</p> <p>April 05, 2004 Date</p>	
<p><b>SURVEYOR CERTIFICATION</b></p> <p>I hereby certify that the well location shown on this plat was plotted from field notes of actual surveys made by me or under my supervision, and that the same is true and correct to the best of my belief.</p> <p>3/15/2004 Date Surveyed</p> <p><i>Herschel L. Jones</i> Signature &amp; Seal of Professional Surveyor</p> <p><i>Herschel L. Jones</i> Professional Seal NEW MEXICO 3640 Certificate No. Herschel L. Jones PLS 3640 JUSTICE FED. COM. GENERAL SURVEYING COMPANY</p>					

0 330' 660' 990' 1650' 1980' 2310' 2310' 1980' 1650' 990' 660' 330' 0'

SECTION 1, TOWNSHIP 21 SOUTH, RANGE 27 EAST, NMPM, EDDY COUNTY, NEW MEXICO.



THE PREPARATION OF THIS PLAT AND THE PERFORMANCE OF THE SURVEY UPON WHICH IT IS BASED WERE DONE UNDER MY DIRECTION AND THE PLAT ACCURATELY DEPICTS THE RESULTS OF SAID SURVEY AND MEET THE REQUIREMENTS OF THE STANDARDS FOR LAND SURVEYS IN NEW MEXICO AS ADOPTED BY THE NEW MEXICO STATE BOARD OF REGISTRATION FOR PROFESSIONAL ENGINEERS AND LAND SURVEYORS.



GENERAL SURVEYING COMPANY P.O. BOX 1928  
LOVINGTON, NEW MEXICO 88260

## MEWBOURNE OIL COMPANY

LEASE ROAD TO ACCESS THE MEWBOURNE JUSTICE FEDERAL COM.#1 AND #2 WELLS, LOCATED IN SECTION 1, TOWNSHIP 21 SOUTH, RANGE 27 EAST, NMPM, EDDY COUNTY, NEW MEXICO.

Survey Date: 3/15/2004	Sheet 1 of 1 Sheets
Drawn By: Ed Blevins	W.O. Number
Date: 3/15/04	Scale 1" = 1000' JUSTICE 1&2

Mewbourne Oil Company  
BOP Schematic for  
12 1/4" Hole

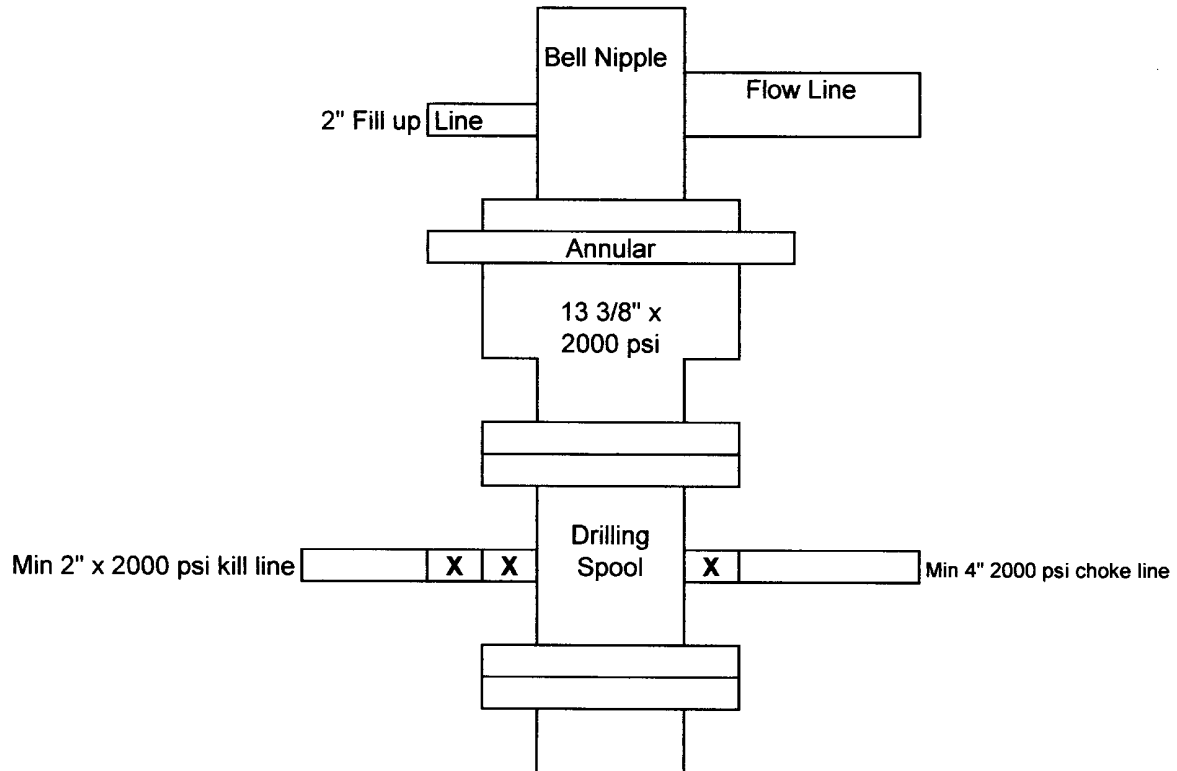


Exhibit #2

Justice Federal Com # 1  
3300' FSL & 1650' FWL  
Sec.1; T21S; R27E  
Eddy County, New Mexico

Mewbourne Oil Company

BOP Schematic for  
8 3/4" or 7 7/8" Hole

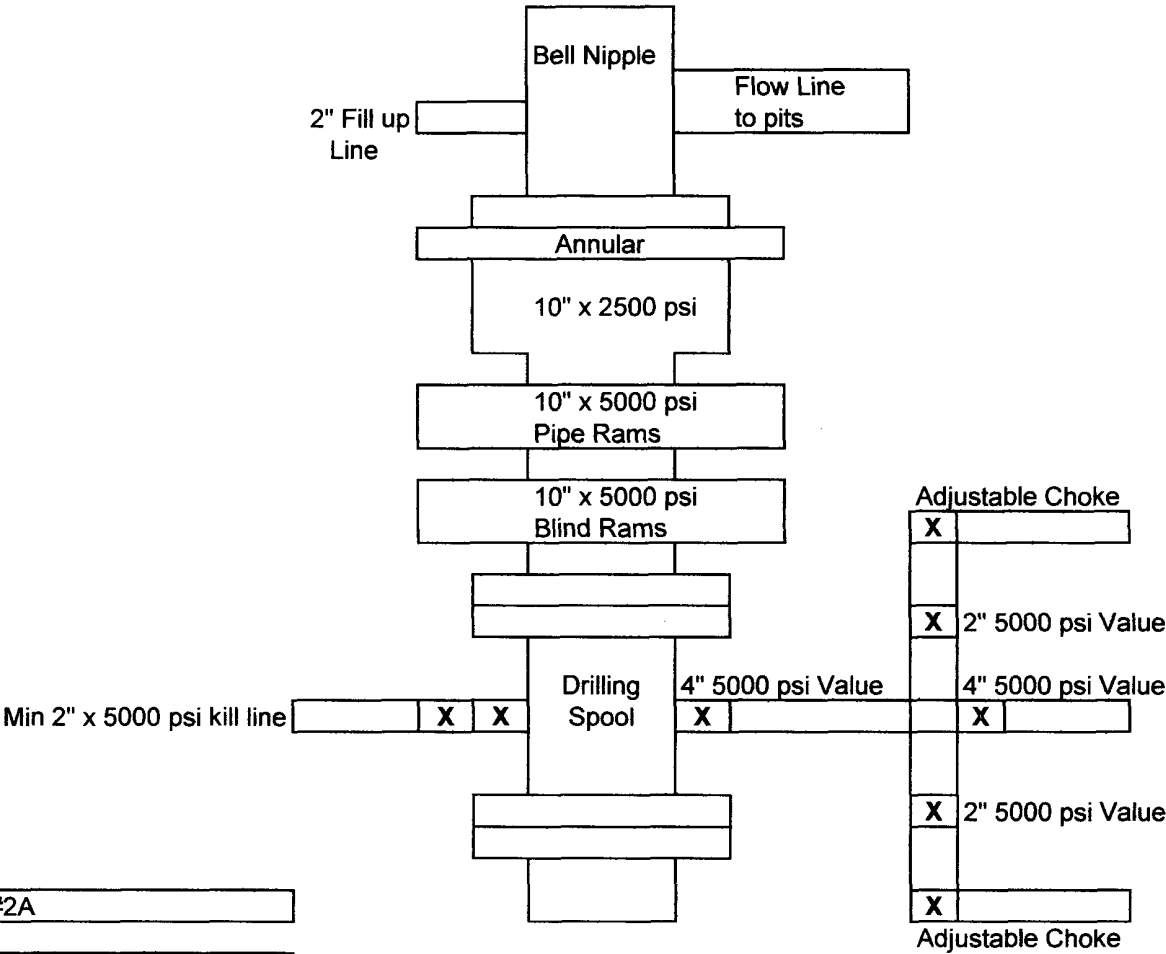


Exhibit #2A

Justice Federal Com # 1  
3300' FSL & 1650' FWL  
Sec.1; T21S; R27E  
Eddy County, New Mexico

## **Hydrogen Sulfide Drilling Operations Plan**

### **Mewbourne Oil Company**

Justice Federal Com # 1

3300' FSL & 1650' FWL

Section 1 -T21S-R27E

Eddy County, New Mexico

#### **1. Hydrogen Sulfide Training**

All personnel, whether regularly assigned, contracted, or employed on an unscheduled basis, will have received training from a qualified instructor in the following areas prior to entering the drilling pad area of the well:

- 1 The hazards and characteristics of hydrogen sulfide gas.
- 2 The proper use of personal protective equipment and life support systems.
- 3 The proper use of hydrogen sulfide detectors, alarms, warning systems, briefing areas, evacuation procedures.
- 4 The proper techniques for first aid and rescue operations.

Additionally, supervisory personnel will be trained in the following areas:

- 1 The effects of hydrogen sulfide on metal components. If high tensile tubular systems are utilized, supervisory personnel will be trained in their special maintenance requirements.
- 2 Corrective action and shut in procedures, blowout prevention, and well control procedures while drilling a well.
- 3 The contents of the Hydrogen Sulfide Drilling Operations Plan.

There will be an initial training session prior to encountering a known hydrogen sulfide source. The initial training session shall include a review of the site specific Hydrogen Sulfide Drilling Operations Plan.

#### **2. Hydrogen Sulfide Safety Equipment and Systems**

All hydrogen sulfide safety equipment and systems will be installed, tested, and operational prior to drilling below the intermediate casing.

##### **1. Well Control Equipment**

- A. Flare line with automatic igniter or continuous ignition source.
- B. Choke manifold with minimum of one adjustable choke.
- C. Blowout preventers equipped with blind rams and pipe rams to accommodate all pipe sizes with properly sized closing unit
- D. Auxiliary equipment including rotating head and annular type blowout preventer..

2. Protective Equipment for Essential Personnel

Thirty minute self contained work unit located at briefing area as indicated on wellsite diagram.

3. Hydrogen Sulfide Protection and Monitoring Equipment

Two portable hydrogen sulfide monitors positioned on location for optimum coverage and detection. The units shall have audible sirens to notify personnel when hydrogen sulfide levels exceed 20 ppm.

4. Visual Warning Systems

A. Wind direction indicators as indicated on the wellsite diagram.

B. Caution signs shall be posted on roads providing access to location. Signs shall be painted a high visibility color with lettering of sufficient size to be readable at reasonable distances from potentially contaminated areas.

3. **Mud Program**

The mud program has been designed to minimize the amount of hydrogen sulfide entrained in the mud system. Proper mud weight, safe drilling practices, and the use of hydrogen sulfide scavengers will minimize hazards while drilling the well.

4. **Metallurgy**

All tubular systems, wellheads, blowout preventers, drilling spools, kill lines, choke manifolds, and valves shall be suitable for service in a hydrogen sulfide environment when chemically treated.

5. **Communications**

State & County Officials phone numbers are posted on rig floor and supervisors trailer. Communications in company vehicles and toolpushers are either two way radios or cellular phones.

6. **Well Testing**

Drill stem testing is not an anticipated requirement for evaluation of this well. A drill stem test is required, it will be conducted with a minimum number of personnel in the immediate vicinity. The test will be conducted during daylight hours only.

7. **General Requirements**

MOC has researched this area and no high concentrations of H<sub>2</sub>S was found. MOC will have on location and working all H<sub>2</sub>S safety equipment before Yates and Delaware formations.