

DISTRICT I
P.O. Box 1980, Hobbs, NM 88240

DISTRICT II
P.O. Drawer DD, Artesia, NM 88210

DISTRICT III
1000 Rio Brazos Rd, Aztec, NM
87410

OIL CONSERVATION DIVISION

P.O. Box 2088
Santa Fe, New Mexico 87504-2088

WELL API NO. 30-015-33292
5. Indicate Type of Lease STATE <input checked="" type="checkbox"/> FEE <input type="checkbox"/>
6. State Oil & Gas Lease No.
7. Lease Name or Unit Agreement Name JOELL 6
8. Well No. 2
9. Pool name or Wildcat Carlsbad Morrow South

SUNDRY NOTICES AND REPORTS ON WELLS

(DO NOT USE THIS FORM FOR PROPOSALS TO DRILL OR TO DEEPEN OR PLUG BACK TO A
DIFFERENT RESERVOIR. USE "APPLICATION FOR PERMIT"
(FORM C-101) FOR SUCH PROPOSALS.)

1. Type of Well
☐ Oil Well ☒ Gas Well ☐ Other _____

RECEIVED

2. Name of Operator
DEVON ENERGY PRODUCTION COMPANY, LP

MAR 11 2004

OCD-ARTESIA

3. Address of Operator
20 NORTH BROADWAY, SUITE 1500, OKLAHOMA CITY, OKLAHOMA 73102 (405) 228-8209

4. Well Location **H**
Unit Letter **A** ~~1330~~ Feet From The ~~North~~ **1530/N** Line and ~~1330~~ **1130/E** Feet From The ~~East~~ Line

Section 6 Township 23S Range 27E NMPM Eddy County

10. Elevation (Show whether DF, RKB, RT, GR, etc.)
3184

Check Appropriate Box To Indicate Nature Of Notice, Report, Or Other Data

NOTICE OF INTENTION TO:

PERFORM REMEDIAL WORK ☐ PLUG AND ABANDON ☐
TEMPORARILY ABANDON ☐ CHANGE PLANS ☒
PULL OR ALTER CASING ☐
OTHER: ☐

SUBSEQUENT REPORT OF:

REMEDIAL WORK ☐ ALTERING CASING ☐
COMMENCE DRILLING OPNS. ☐ PLUG AND ABANDONMENT ☐
CASING TEST AND CEMENT JOB ☐
OTHER: ☐

13. Describe Proposed or Completed Operations (Clearly state all pertinent details, and give pertinent dates, including estimated date of starting any proposed work.) SEE RULE 1103.

Devon Energy Production Company LP requests approval to move the location to the following:

New Location: 1530' FNL & 1130' FEL
Unit Letter H, Section 6-T23S-R27E Eddy County, NM

Old Location: 1330' FNL & 1330' FEL
Unit Letter G, Section 6, T23S-R27E Eddy County, NM

I hereby certify that the information above is true and complete to the best of my knowledge and belief.

SIGNATURE Linda Guthrie TITLE OPERATIONS ASSOCIATE

DATE 03/08/04

TYPE OR PRINT NAME Linda Guthrie

TELEPHONE NO. (405) 235-3611

(This space for State use)

Approved by _____
Conditions of approval, if any:

TITLE _____

DATE

MAR 11 2004

State of New Mexico

Energy, Minerals and Natural Resources Department

Form C-102

Revised February 10, 1994

Submit to Appropriate District Office

State Lease - 4 Copies

Fee Lease - 3 Copies

DISTRICT I

P.O. Box 1900, Hobbs, NM 88241-1900

DISTRICT II

P.O. Drawer DD, Artesia, NM 86211-0719

DISTRICT III

1000 Rio Bravo Rd., Artesia, NM 87410

DISTRICT IV

P.O. Box 2088, Santa Fe, N.M. 87504-2088

OIL CONSERVATION DIVISION

P.O. Box 2088

Santa Fe, New Mexico 87504-2088

WELL LOCATION AND ACREAGE DEDICATION PLAT

☐ AMENDED REPORT

API Number	Pool Code	Pool Name Carlsbad Morrow South
Property Code	Property Name JOELL 6	Well Number 2
OGRID No. 6137	Operator Name DEVON ENERGY PRODUCTION COMPANY, L.P.	Elevation 3187'

Surface Location

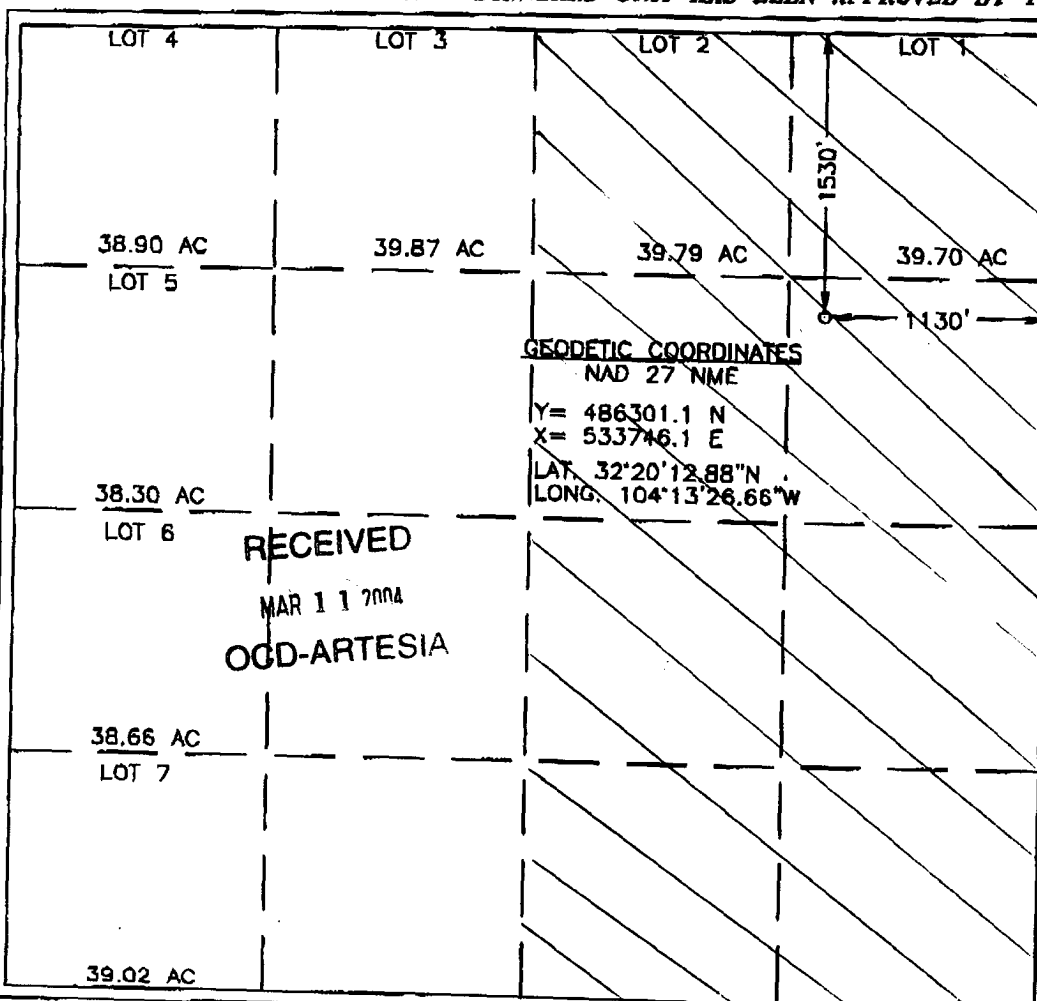
UL or lot No.	Section	Township	Range	Lot Idn	Feet from the	North/South line	Feet from the	East/West line	County
H	6	23-S	27-E		1530'	NORTH	1130'	EAST	EDDY

Bottom Hole Location If Different From Surface

UL or lot No.	Section	Township	Range	Lot Idn	Feet from the	North/South line	Feet from the	East/West line	County

Dedicated Acres	Joint or Infill	Consolidation Code	Order No.
319.49			

NO ALLOWABLE WILL BE ASSIGNED TO THIS COMPLETION UNTIL ALL INTERESTS HAVE BEEN CONSOLIDATED
OR A NON-STANDARD UNIT HAS BEEN APPROVED BY THE DIVISION



OPERATOR CERTIFICATION

I hereby certify that the information contained herein is true and complete to the best of my knowledge and belief.

Linda B Guthrie
Signature

Linda B Guthrie
Printed Name

Operations Associate
Title

03/08/04
Date

SURVEYOR CERTIFICATION

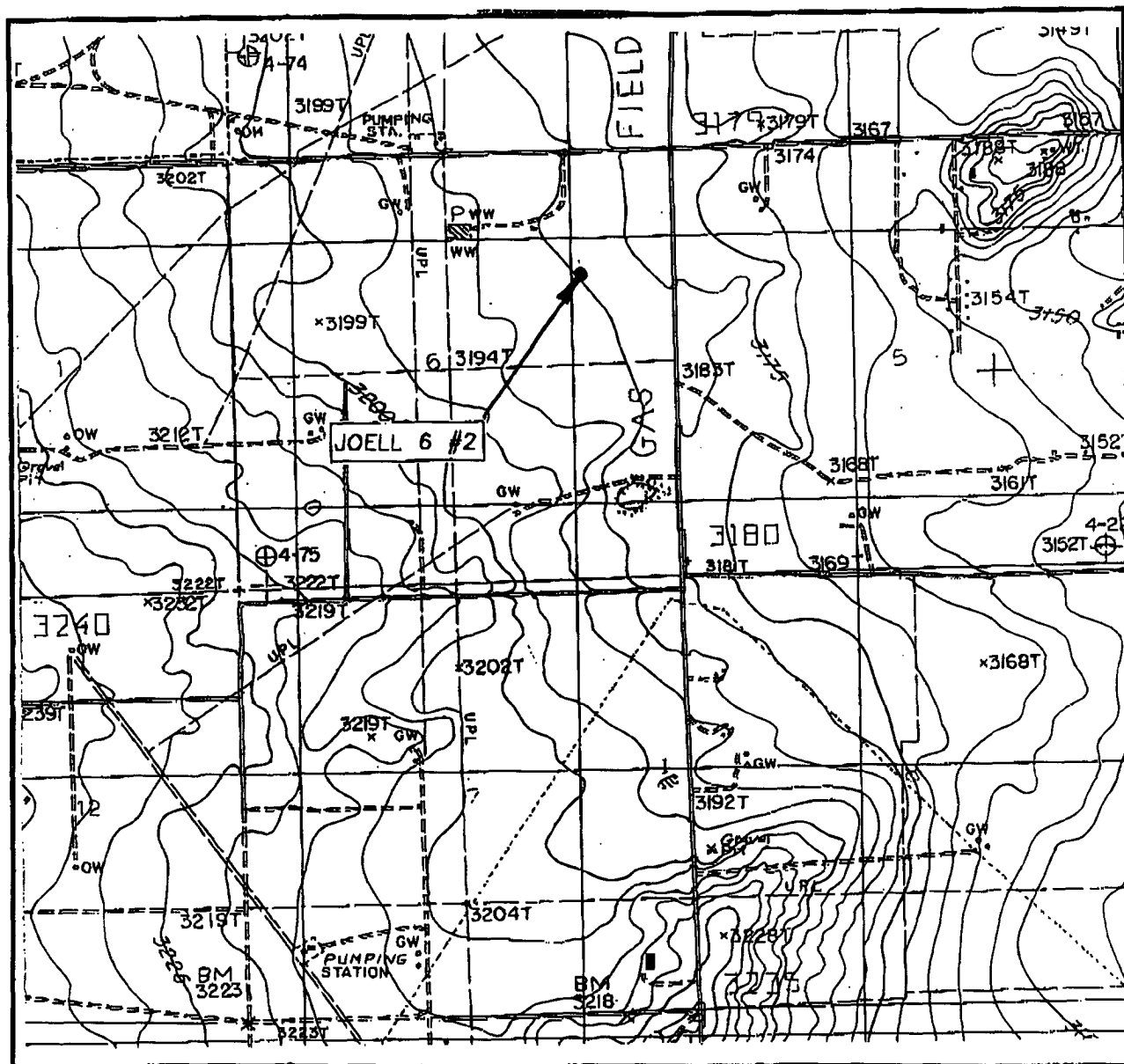
I hereby certify that the well location shown on this plat was plotted from field notes of actual surveys made by me or under my supervision, and that the same is true and correct to the best of my belief.

March 03, 2004

Date Surveyed
Signature & Seal of Professional Surveyor
AWB

GARY EIDSON
GARY EIDSON
04-11-0248
Certification No. 12641

LOCATION VERIFICATION MAP



SCALE: 1" = 2000'

CONTOUR INTERVAL: 5'
OTIS, N.M.

SEC. 6 TWP. 23-S. RGE. 27-E

SURVEY N.M.P.M.

COUNTY EDDY

DESCRIPTION 1530' FNL & 1130' FEL

ELEVATION 3187'

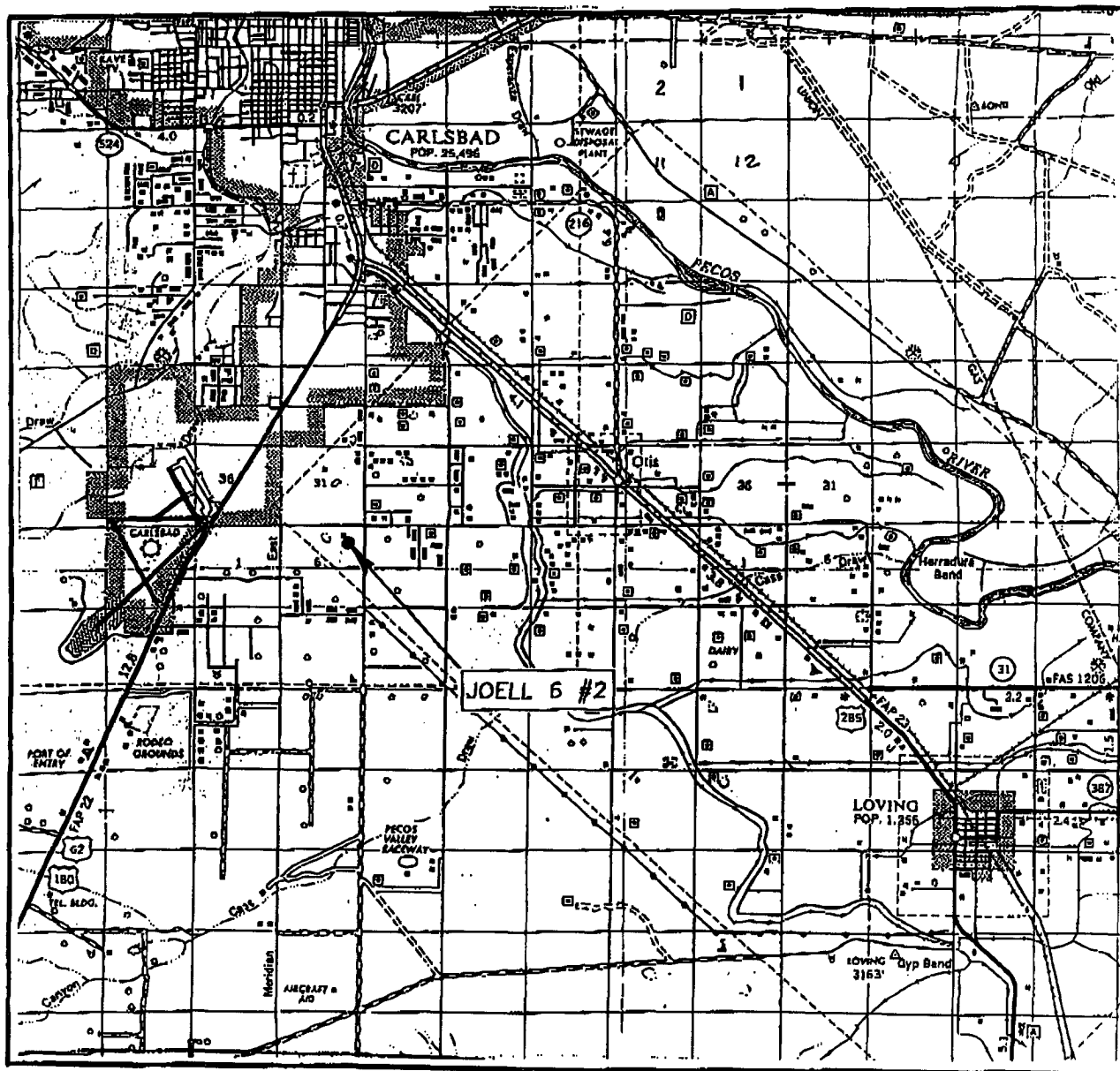
OPERATOR DEVON ENERGY PROD. CO. L.P.

LEASE JOELL 6

U.S.G.S. TOPOGRAPHIC MAP
OTIS, N.M.

JOHN WEST SURVEYING
HOBBS, NEW MEXICO
(505) 393-3117

VICINITY MAP



SCALE: 1" = 2 MILES

SEC. 6 TWP. 23-S RGE. 27-ESURVEY N.M.P.M.COUNTY EDDYDESCRIPTION 1530' FNL & 1130' FELELEVATION 3187'OPERATOR DEVON ENERGY PROD. CO. L.P.LEASE JOELL 6

JOHN WEST SURVEYING
HOBBS, NEW MEXICO
(505) 393-3117



**Devon Energy Corporation
20 North Broadway
Oklahoma City, Oklahoma 73102-8260**

Hydrogen Sulfide (H₂S) Contingency Plan

For

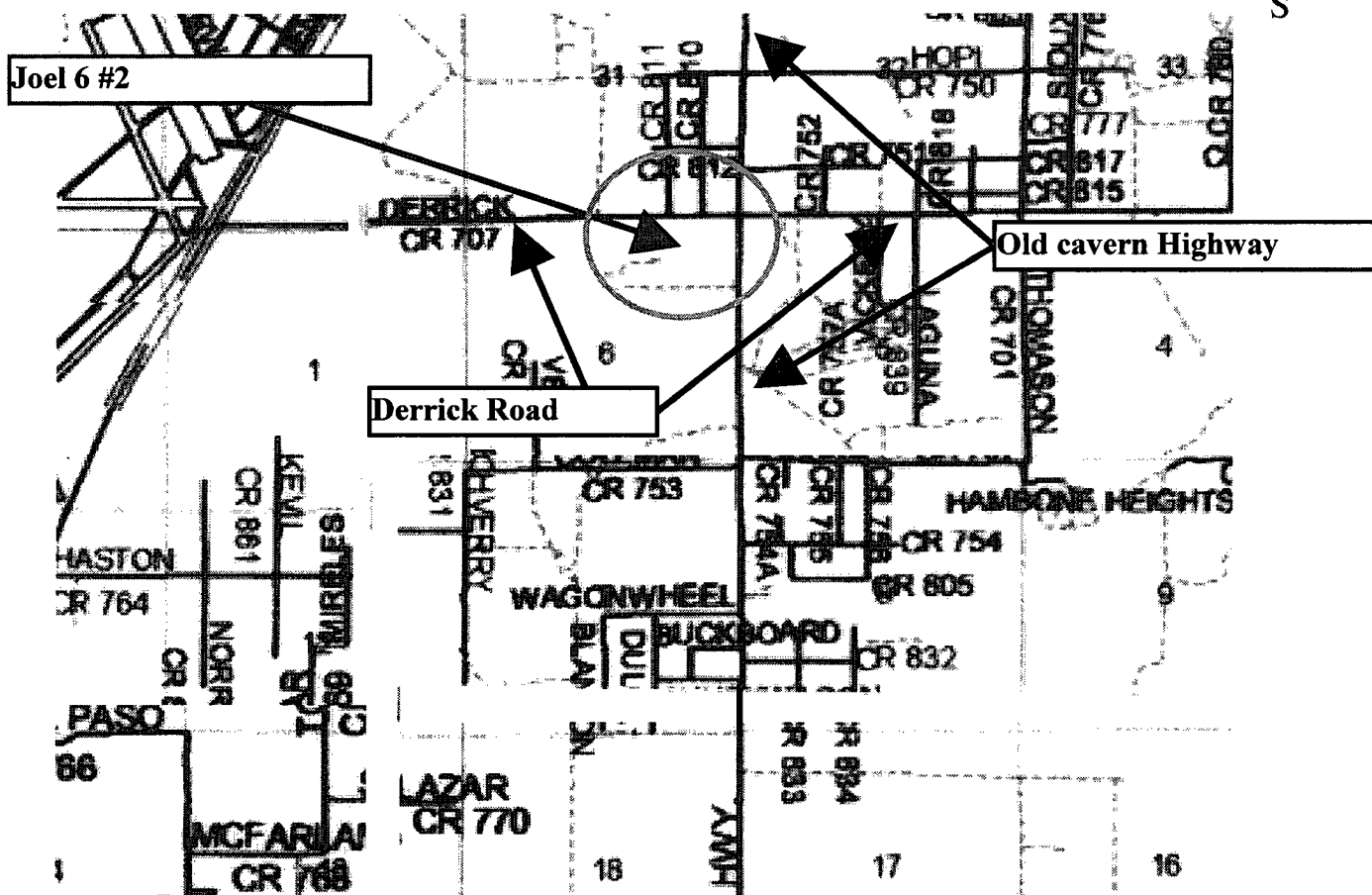
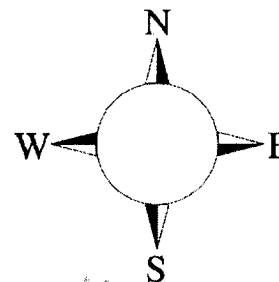
Joell 6 #2

30-015-33292
**1530' FNL & 1130' FEL,
Sec-6, T-23S R-27E**

Eddy County NM

Joel 6 #2

This is an open drilling site. H₂S monitoring equipment and emergency response equipment will be used within 500' of zones known to contain H₂S, including warning signs, wind indicators and H₂S monitor.



Assumed 100 ppm ROE = 3000' (Radius of Exposure)
100 ppm H₂S concentration shall trigger activation of this plan.

Escape

Crews shall escape upwind of escaping gas in the event of an emergency release of gas. Escape can be facilitated in four different directions from location. Crews should then block entrance to the location from all four directions so as not to allow anyone traversing into a hazardous area. There is a home in or near the ROE. Site personnel should ensure the evacuation of all persons (public) that are within the ROE. The ROE may additionally be broadened to ensure a lower level of exposure.

Emergency Procedures

In the case of a release of gas containing H₂S, the first responder(s) must isolate the area and prevent entry by other persons into the 100 ppm ROE. Additionally the first responder(s) must evacuate any public places encompassed by the 100 ppm ROE. First responder(s) must take care not to injure themselves during this operation. Company and/or local officials must be contacted to aid in this operation. Evacuation of the public should be beyond the 100 ppm ROE.

All responders must have training in the detection of H₂S, measures for protection against the gas, equipment used for protection and emergency response. Additionally, responders must be equipped with H₂S monitors and air packs in order to control the release. Use the "buddy system" to ensure no injuries during the response.

Ignition of Gas Source

Should control of the well be considered lost and ignition considered, take care to protect against exposure to Sulfur Dioxide (SO₂). Intentional ignition must be coordinated with the NMOCD and local officials. Additionally the NM State Police may become involved. NM State Police shall be the Incident Command on scene of any major release. Take care to protect downwind whenever there is an ignition of the gas

Characteristics of H₂S and SO₂

Common Name	Chemical Formula	Specific Gravity	Threshold Limit	Hazardous Limit	Lethal Concentration
Hydrogen Sulfide	H ₂ S	1.189 Air = 1	10 ppm	100 ppm/hr	600 ppm
Sulfur Dioxide	SO ₂	2.21 Air = 1	2 ppm	N/A	1000 ppm

Contacting Authorities

Devon Energy Corp. personnel must liaison with local and state agencies to ensure a proper response to a major release. Additionally, the OCD must be notified of the release as soon as possible but no later than 4 hours. Agencies will ask for information such as type and volume of release, wind direction, location of release, etc. Be prepared with all information available. The following call list of essential and potential responders has been prepared for use during a release. Devon Energy Corp. Company response must be in coordination with the State of New Mexico's 'Hazardous Materials Emergency Response Plan' (HMER)

Devon Energy Corp. Company Call List

<u>Artesia (505)</u>	<u>Cellular</u>	<u>Office</u>	<u>Home</u>
Foreman – BJ Cathey	390-5893	748-0176	887-6026
Asst. Foreman – Bobby Jones	748-7447	748-0176	746-3194
Cecil Thurmond	748-7180	748-0171	887-1479
David Purdy	(432)631-2969	(432)495-7279	(432)683-0735
Engineer – Tom Pepper	(405) 203-2242	(405) 552-4513	(405) 728-8641

Agency Call List

Eddy County (505)

Artesia

State Police	746-2703
City Police	746-2703
Sheriff's Office	746-9888
Ambulance	911
Fire Department	746-2701
LEPC (Local Emergency Planning Committee)	746-2122
NMOCD	748-1283

Carlsbad

State Police	885-3137
City Police	885-2111
Sheriff's Office	887-7551
Ambulance	911
Fire Department	885-2111
LEPC (Local Emergency Planning Committee)	887-3798
US Bureau of Land Management	887-6544

New Mexico Emergency Response Commission (Santa Fe)	(505)476-9600
24 HR	(505) 827-9126
National Emergency Response Center (Washington, DC)	...(800) 424-8802

Other

Boots & Coots IWC	1-800-256-9688 or (281) 931-8884
Cudd Pressure Control	(915) 699-0139 or (915) 563-3356
Halliburton	(505) 746-2757
B. J. Services	(505) 746-3569

Flight For Life -4000 24th St, Lubbock, TX	(806) 743-9911
Aerocare -Rr 3 Box 49f, Lubbock, TX	(806) 747-8923
Med Flight Air Amb 2301 Yale Blvd SE #D3, Albuq, NM	(505) 842-4433
S B Air Med Svc 2505 Clark Carr Loop SE, Albuq, NM	(505) 842-4949

Prepared in conjunction with
Wade Rohloff of;

