

7034

5/28/00

*Dum*

N.M. Oil Cons. Div. Dist. 2

FORM APPROVED  
OMB NO. 1004-0136  
Expires: February 28, 1995

UNITED STATES DEPARTMENT OF THE INTERIOR  
BUREAU OF LAND MANAGEMENT  
1301 W. Grand Avenue  
Artesia, NM 88210

0281

APPLICATION FOR PERMIT TO DRILL OR DEEPEN

1a. TYPE OF WORK  
 DRILL  DEEPEN

b. TYPE OF WELL  
 OIL WELL  GAS WELL  OTHER  SINGLE ZONE

2. NAME OF OPERATOR  
 MARALO LLC. (14007 (PHILLIP SMITH) 915-684-7441

3. ADDRESS AND TELEPHONE NO.  
 P.O. BOX 832 MIDLAND, TEXAS 79702 915-684-7441

4. LOCATION OF WELL (Report location clearly and in accordance with any State requirements.)  
 At surface UNIT G  
 1650' FNL & 1750' FEL SEC. 31 T23S-R30E EDDY CO. NM  
 At proposed prod. zone SAME

14. DISTANCE IN MILES AND DIRECTION FROM NEAREST TOWN OR POST OFFICE\*  
 Approximately 10 miles East of Loving New Mexico

15. DISTANCE FROM PROPOSED\* LOCATION TO NEAREST PROPERTY OR LEASE LINE, FT. (Also to nearest drlg. unit line, if any)  
 1650'

16. NO. OF ACRES IN LEASE  
 960

17. NO. OF ACRES ASSIGNED TO THIS WELL  
 40

18. DISTANCE FROM PROPOSED LOCATION\* TO NEAREST WELL, DRILLING, COMPLETED, OR APPLIED FOR, ON THIS LEASE, FT.  
 1320'

19. PROPOSED DEPTH  
 7450'

20. ROTARY OR CABLE TOOLS  
 ROTARY

21. ELEVATIONS (Show whether DF, RT, GR, etc.)  
 3112' GR.

22. APPROX. DATE WORK WILL START\*  
 WHEN APPROVED

5. LEASE DESIGNATION AND SERIAL NO.  
 NM-92180

6. IF INDIAN, ALLOTTEE OR TRIBE NAME  
 \_\_\_\_\_

7. UNIT AGREEMENT NAME  
 \_\_\_\_\_

8. FARM OR LEASE NAME, WELL NO., GOLD RUSH "31" FEDERAL # 4  
 2118

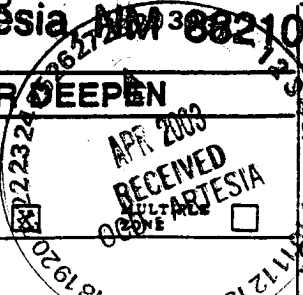
9. API WELL NO.  
 30-015-32768

10. FIELD AND POOL, OR WILDCAT  
 NASH DRAW- Delaware

11. SEC., T., R., M., OR BLK. AND SURVEY OR AREA  
 SEC. 31 T23S-R30E

12. COUNTY OR PARISH  
 EDDY CO.

13. STATE  
 NEW MEXICO



W.G. POTASH

PROPOSED CASING AND CEMENTING PROGRAM

Carlsbad Controlled Water Basin

SIZE OF HOLE	GRADE SIZE OF CASING	WEIGHT PER FOOT	SETTING DEPTH	QUANTITY OF CEMENT
25"	Conductor 20"	NA	40'	Cement to surface with Redi-mix
17 1/2"	J-55 13 3/8"	54.5 WITNESS	650'	750 Sx. circulate to surface
12 1/2"	J-55 8 5/8"	32 WITNESS	3100'	1175 Sx. circulate to surface.
7 7/8"	J-55 5 1/2"	15.5	7450'	1000 Sx. circulate to surface

1. Drill 25" hole to 40'. Set 40' of 20" conductor pipe and cement to surface with Redi-mix.
2. Drill 17 1/2" hole to 650' Run and set 650' of 13 3/8" 54.5# J-55 ST&C casing. Cement with 950 Sx. of Halco Light Class "C" + additives, tail in with 250 Sx. of Premium Plus Class "C" + additives, circulate cement to surface.
3. Drill 12 1/2" hole to 3100'. Run and set 3100' of 8 5/8" J-55 32# ST&C casing. Cement with 925 Ax. of Halco Light Class "C" + additives, tail in with 250 Sx. of Class "C" Premium Plus cement + additives, circulate cement to surface.
4. Drill 7 7/8" hole to 7450'. Run and set 7450' of 5 1/2" J-55 15.5# LT&C casing. Cement with 700 Sx. of Halco Light + additives, tail in with 300 Sx. of Super Class "H" Modified cement + additives, circulate cement to surface.

IN ABOVE SPACE DESCRIBE PROPOSED PROGRAM: If proposal is to deepen, give data on present productive zone and proposed new productive zone. If proposal is to drill or deepen directionally, give pertinent data on subsurface locations and measured and true vertical depths. Give blowout preventer program, if any.

24. SIGNED *Scott Jarvis* TITLE AGENT DATE 01/12/03

(This space for Federal or State office use)

PERMIT NO. \_\_\_\_\_

APPROVAL SUBJECT TO GENERAL REQUIREMENTS AND SPECIAL STIPULATIONS ATTACHED

Application approval does not warrant or certify that the applicant holds legal or equitable title to those rights in the subject lease which would entitle the applicant to conduct operations thereon. CONDITIONS OF APPROVAL, IF ANY:

APPROVED BY *Linda S.C. Rendell* TITLE STATE DIRECTOR DATE APR 21 2003  
 \*See Instructions On Reverse Side APPROVAL FOR 1 YEAR

DISTRICT I  
P.O. Box 1980, Hobbs, NM 88241-1980

State of New Mexico

Energy, Minerals and Natural Resources Department

Form C-102

Revised February 10, 1994  
Submit to Appropriate District Office  
State Lease - 4 Copies  
Fee Lease - 3 Copies

DISTRICT II  
P.O. Drawer 80, Artesia, NM 88211-0719

OIL CONSERVATION DIVISION

P.O. Box 2088

Santa Fe, New Mexico 87504-2088

DISTRICT III  
1000 Rio Brazos Rd., Artec, NM 87410

DISTRICT IV  
P.O. Box 2088, Santa Fe, NM 87504-2088

AMENDED REPORT

WELL LOCATION AND ACREAGE DEDICATION PLAT

API Number	Pool Code 47545	Pool Name NASH DRAW-BRUSHY CANYON
Property Code 21118	Property Name GOLD RUSH "31" FED.	Well Number 4
OGRID No. 14007	Operator Name MARALO, LLC	Elevation 3112

Surface Location

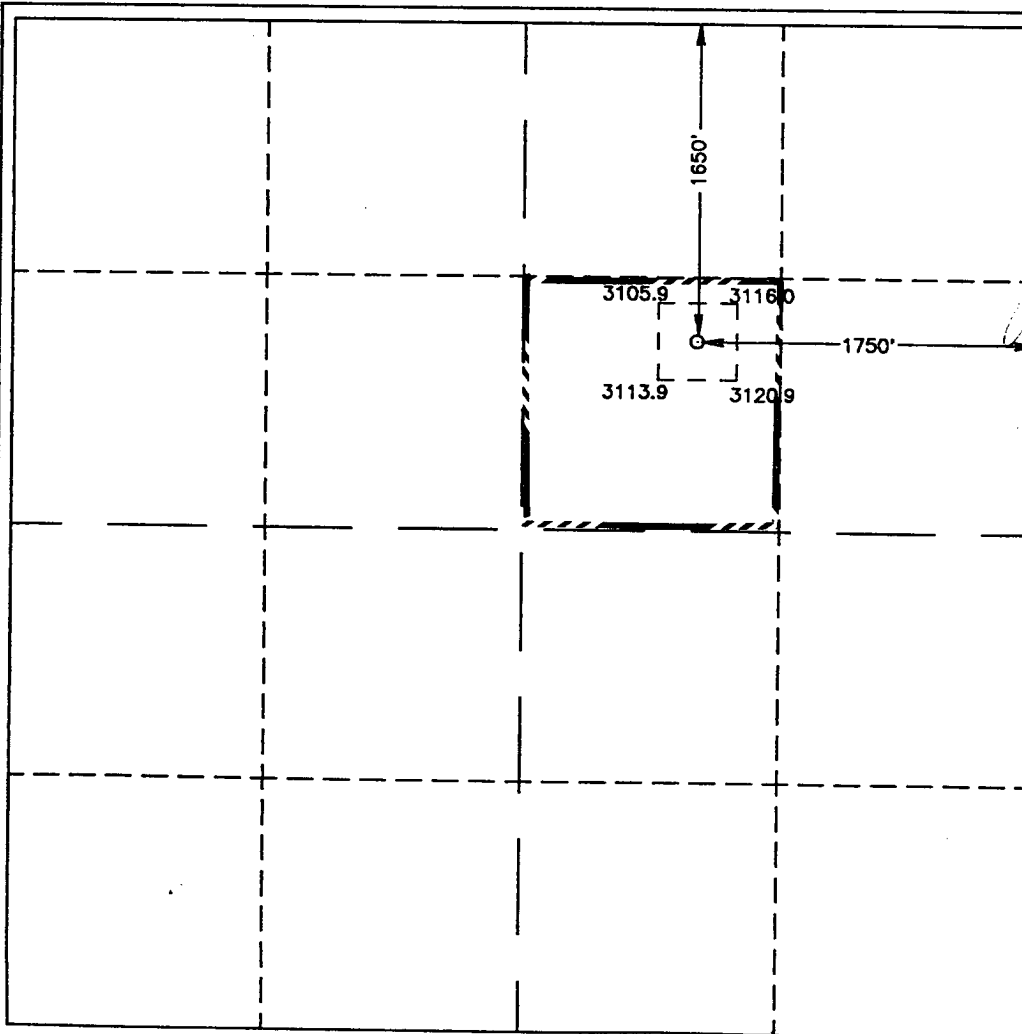
UL or lot No.	Section	Township	Range	Lot Idn	Feet from the	North/South line	Feet from the	East/West line	County
G	31	23 S	30 E		1650	NORTH	1750	EAST	EDDY

Bottom Hole Location If Different From Surface

UL or lot No.	Section	Township	Range	Lot Idn	Feet from the	North/South line	Feet from the	East/West line	County

Dedicated Acres	Joint or Infill	Consolidation Code	Order No.
40			

NO ALLOWABLE WILL BE ASSIGNED TO THIS COMPLETION UNTIL ALL INTERESTS HAVE BEEN CONSOLIDATED OR A NON-STANDARD UNIT HAS BEEN APPROVED BY THE DIVISION



OPERATOR CERTIFICATION

I hereby certify the the information contained herein is true and complete to the best of my knowledge and belief.

*Joe T. Janica*  
Signature

Joe T. Janica  
Printed Name

Agent  
Title

01/12/03  
Date

Date

SURVEYOR CERTIFICATION

I hereby certify that the well location shown on this plat was plotted from field notes of actual surveys made by me or under my supervision, and that the same is true and correct to the best of my belief.

AUGUST 21, 2000

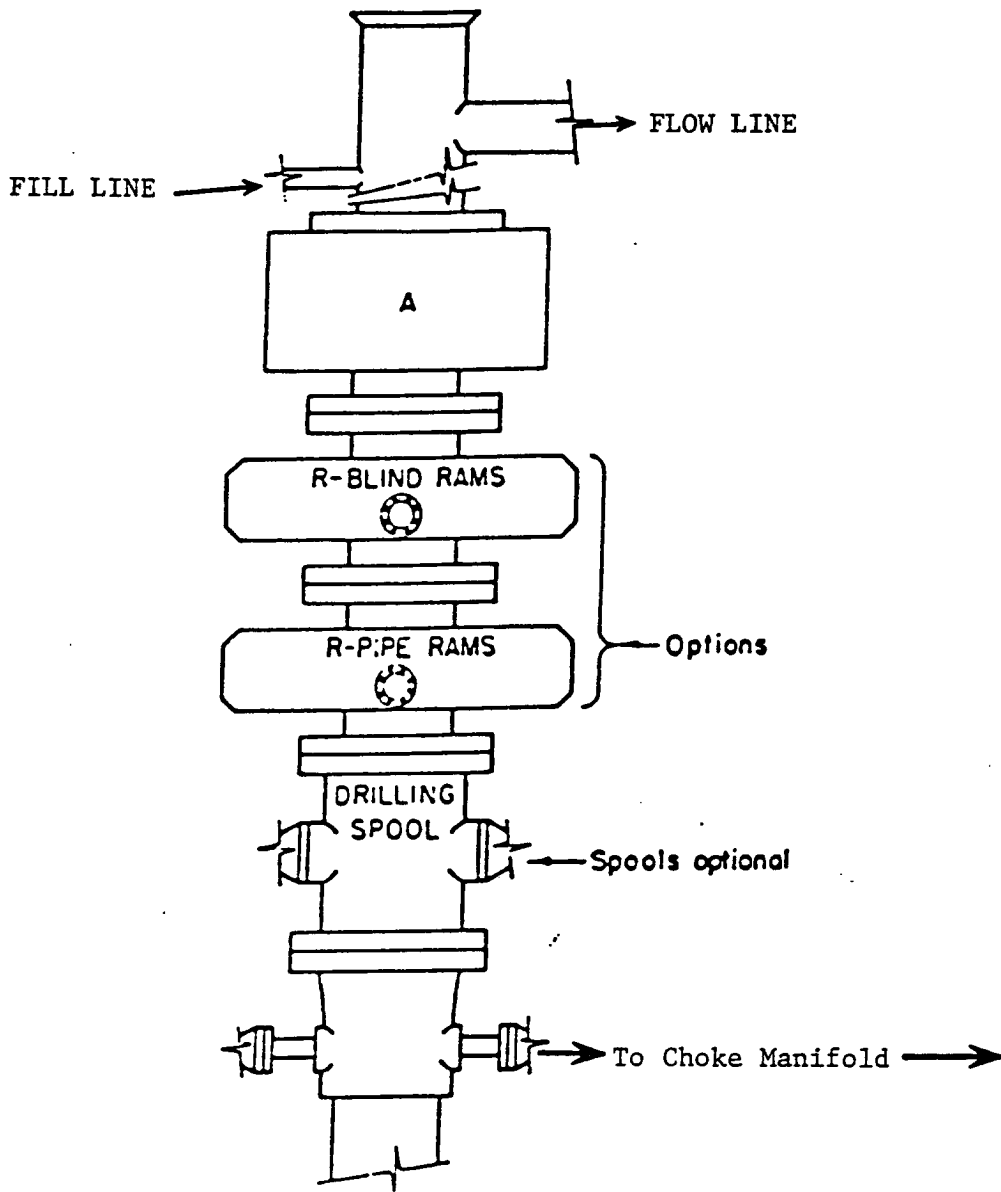
Date Surveyed

*Ronald J. Edson*  
Signature & Seal of Professional Surveyor

*Ronald J. Edson*  
Professional Surveyor  
NEW MEXICO  
8/23/00

P.D. Num 00-11-1014

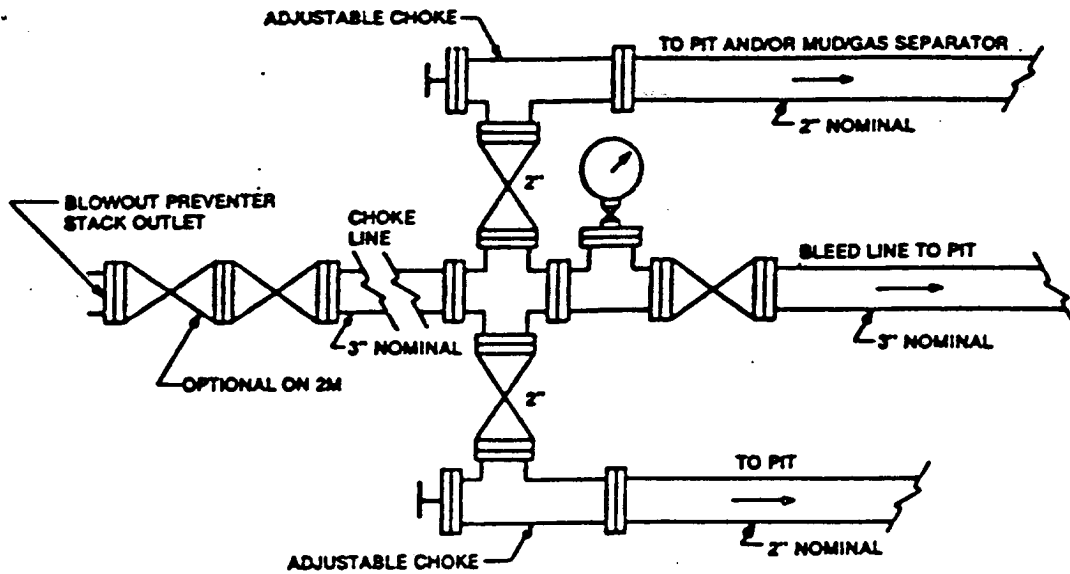
Certificate No. RONALD J. EDSON, 3239  
GARY E. EDSON, 12641  
WACON McDONALD, 12185



**ARRANGEMENT SRRA**

900 Series  
3000 PSI WP

EXHIBIT "E"  
 SKETCH OF B.O.P. TO BE USED ON  
 MARALO LLC  
 GOLD RUSH "31" FEDERAL # 4  
 UNIT "G" SECTION 31  
 T23S-R30E EDDY CO. NM



Typical choke manifold assembly for 3M WP system

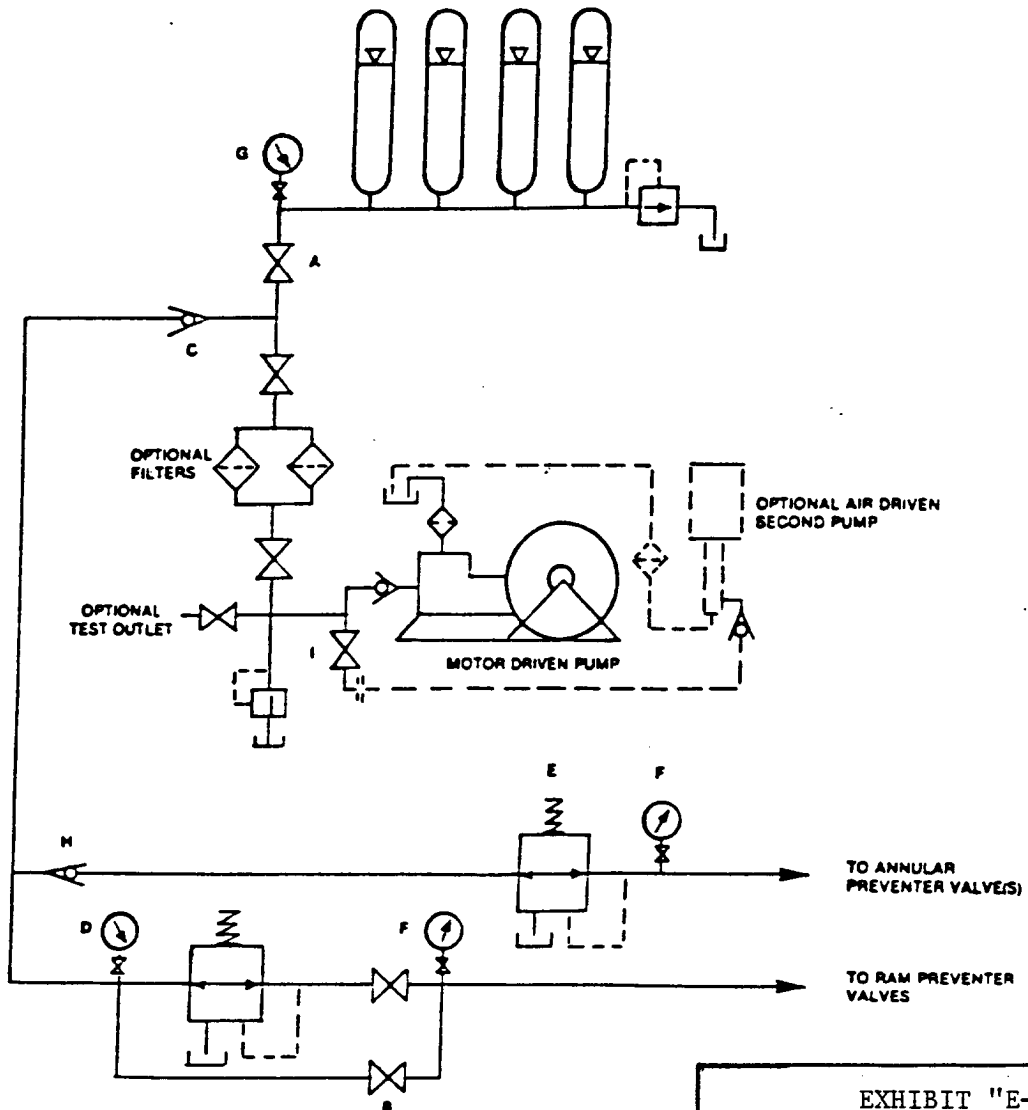


EXHIBIT "E-1"  
 CHOKE MANIFOLD & CLOSING UNIT

MARALO LLC  
 GOLD RUSH "31" FEDERAL # 4  
 UNIT "G" SECTION 31  
 T23S-R30E EDDY CO. NM