

RECEIVED

AUG 11 2004

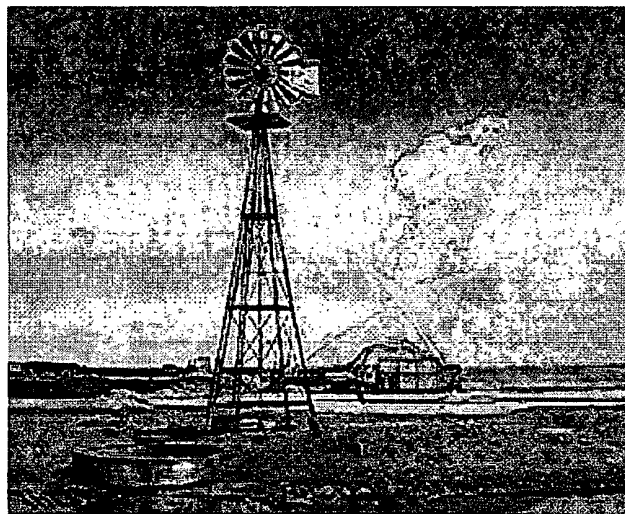
OCD-ARTESIA

# YATES PETROLEUM

Legals:

COUNTRY CLUB AYK #1  
11,600' MORROW WELL  
SECTION 25, T-21-S, R-26-E  
1650' FSL 660' FEL  
EDDY COUNTY, NEW MEXICO

## "CONTINGENCY PLAN"



CALLAWAY SAFETY EQUIPMENT CO., INC.  
3229 N. INDUSTRIAL DR.  
HOBBS, NEW MEXICO 88240  
(505) 392-2973

## Table of Contents

- I. H2S Contingency Plan Section
  - A. Scope
  - B. Objective
  - C. Discussion of Plan
- II. Emergency Procedures Section
  - A. Emergency Procedures
  - B. Emergency Reaction Steps
  - C. Simulated Blowout Control Drills
- III. Ignition Procedures Section
  - A. Responsibility
  - B. Instructions
- IV. Training Program Section
  - A. Training Requirements
- V. Emergency Equipment Section
  - A. Emergency Equipment Requirements
- VI. Check Lists Section
  - A. Status Check List
  - B. Procedural Check List
- VII. Briefing Procedure Section
  - A. Briefing Procedures
- VIII. Evacuation Plan Section
  - A. General Plan
  - B. Emergency Assistance Telephone List
- IX. Maps and Plats Section
  - A. Map showing Well site
  - B. Map showing Public within Radius of Exposure and Evacuation Routes
  - B. Emergency Call List of Residents and Businesses

X. General Information Section

- A. Drilling / Re-entry Permits
- B. 100 ppm Exposure Radius Chart
- C. 500 ppm Exposure Radius Chart
- D. Toxic Effects of Hydrogen Sulfide Poisoning
- E. Use of Self Contained Breathing Apparatus
- F. Rescue-First Aid for Hydrogen Sulfide Poisoning

## I. H2S CONTINGENCY PLAN SECTION

### Scope

This contingency plan establishes guidelines for all company employees and contract employees whose work activities may involve exposure to Hydrogen Sulfide gas (H<sub>2</sub>S).

### Objective

1. Prevent any and all accidents and prevent the uncontrolled release of H<sub>2</sub>S into the atmosphere.
2. Provide proper evacuation procedures to cope with emergencies.
3. Provide immediate and adequate medical attention should an injury occur.

### Discussion of Plan

Implementation: This plan, with all details, is to be fully implemented prior to drilling below 1000'.

Emergency Response Procedure: This section outlines the conditions and denotes steps to be taken in the event of an emergency.

Emergency Equipment and Procedure: This section outlines the safety and emergency equipment that will be required for the drilling of this well.

Training Provisions: This section outlines the training provisions that must be adhered to prior to drilling below 1000'.

Emergency Call Lists: Included are the telephone numbers of all persons that would need to be contacted should an emergency occur.

Briefing: This section deals with the briefing of all people involved in the drilling operation.

Public Safety: Public Safety Personnel will be made aware of the drilling of this well.

Check Lists: Status Check Lists and Procedural Check Lists have been included to insure adherence to the plan.

General Information: A general information section has been included to supply support information.

## II. EMERGENCY PROCEDURES SECTION

### Emergency Procedures

- I. In the event of any evidence of H<sub>2</sub>S level above 10 ppm, take the following steps immediately:
  - A. Secure breathing apparatus.
  - B. Order non-essential personnel out of the danger zone.
  - C. Take steps to determine if the H<sub>2</sub>S level can be corrected or suppressed and if so, proceed with normal operations.
- II. If uncontrollable conditions occur, proceed with the following:
  - A. Take steps to protect and / or remove any public downwind of the rig including partial evacuation or isolation. Notify necessary public Safety personnel and Yates Petroleum Corporation, Drilling Superintendent, Jim Krogman of the situation.
  - B. Remove all personnel to the Safe Briefing Area.
  - C. Notify public safety personnel for help with maintaining roadblocks and implementing evacuation.
  - D. Determine and proceed with the best possible plan to regain control of the well. Maintain tight security and safety procedures.
- III. Responsibility
  - A. The Company Approved Supervisor shall be responsible for the total implementation of the plan.
  - B. The Company Approved Supervisor shall be in complete command during any emergency.
  - C. The Company Approved Supervisor shall designate a back up Supervisor in the event that he / she is not available.

## **Emergency Reaction Steps**

### **I. Drilling or Tripping**

#### **A. All Personnel**

1. When alarm sounds, don escape unit and report to upwind Safe Briefing Area
2. Check status of other personnel (Buddy System).
3. Secure breathing apparatus.
4. Await order from Supervisor

#### **B. Drilling Foreman**

1. Report to the upwind Safe Briefing Area.
2. Don breathing apparatus and return to the point of release with the Tool Pusher or Driller (Buddy System).
3. Determine the concentration of H<sub>2</sub>S.
4. Assess the situation and take appropriate control measures.

#### **C. Tool Pusher**

1. Report to the upwind Safe Briefing Area.
2. Don breathing apparatus and return to the point of release with the Drilling Foreman or Driller (Buddy System).
3. Determine the concentration of H<sub>2</sub>S.
4. Assess the situation and take appropriate control measures.

#### **D. Driller**

1. Don escape unit.
2. Check monitor for point of release.
3. Report to the Safe Briefing Area.
4. Check the status of other personnel (in a rescue attempt, always use the buddy system).
5. Assign the least essential person to notify the Drilling Foreman and Tool Pusher, in the event of their absence.
6. Assume the responsibility of the Drilling Foreman and Tool Pusher until they arrive, in the event of their absence.

E. Derrick Man

1. Remain in the Safe Briefing Area until otherwise instructed by Supervisor.

F. Mud Engineer

1. Report to Safe Briefing Area.
2. When instructed, begin check of mud for pH level and H2S level.

G. Safety Personnel

1. Don appropriate breathing apparatus.
2. Check status of all personnel.
3. Await instructions from Drilling Foreman

II. Taking a Kick

- A. All personnel report to Safe Briefing Area.
- B. Follow standard BOP procedures.

III. Open Hole Logging

- A. All unnecessary personnel should leave the rig floor.
- B. Drilling Foreman and Safety personnel should monitor the conditions and make necessary safety equipment recommendations.

IV. Running Casing or Plugging

- A. Follow "Drilling or Tripping" procedures.
- B. Assure that all personnel have access to protective equipment.

### **Simulated Blowout Control Drills**

All drills will be initiated by activating alarm devices (air horn). One long blast, on air horn, for Actual and Simulated Blowout Control Drills. The Drilling Foreman or Tool Pusher will perform this operation at least one time per week for each of the following conditions, with each crew:

Drill 1                      Bottom Drilling

Drill 2                      Tripping Drill Pipe

In each of these drills, the initial reaction time to shutting in the well shall be timed as well as the total time for the crew to complete its entire pit drill assignment. The times must be recorded on the IADC Driller's Log as "Blowout Control Drill".

Drill No.: \_\_\_\_\_

Reaction time to shut-in: \_\_\_\_\_ minutes, \_\_\_\_\_ seconds.

Total time to complete assignment: \_\_\_\_\_ minutes, \_\_\_\_\_ seconds.

#### **I. Drill Overviews**

##### **A. Drill No. 1--Bottom Drilling**

1. Sound the alarm immediately
2. Stop the rotary and hoist the kelly joint above the rotary table.
3. Stop the circulatory pump.
4. Close drill pipe rams.
5. Record casing and drill pipe shut-in pressures and pit volume increases.

##### **B. Drill No. 2--Tripping Drill Pipe**

1. Sound the alarm immediately
2. Position the upper tool joint just above the rotary table and set slips.
3. Install a full opening valve or inside blowout preventer tool in order to close the drill pipe.
4. Close the drill pipe rams.
5. Record the shut-in annular pressure.



## II. Crew Assignments

### A. Drill No. 1-Bottom Drilling

#### 1. Driller

- a. Stop the rotary and hoist Kelly joint above the rotary table.
- b. Stop the circulatory pump.
- c. Check flow.
- d. If flowing, sound the alarm immediately.
- e. Record the shut-in drill pipe pressure.
- f. Record all data reported by the crew.
- g. Determine the mud weight increase needed or other courses of action.

#### 2. Derrickman

- a. Open choke line valve at BOP.
- b. Signal Floor Man #1 at accumulator, that choke line is open.
- c. Close choke and upstream valve after pipe tams have been closed.
- d. Read the shut-in annular pressure and report readings to Driller.

#### 3. Floor Man #1

- a. Close the pipe tams after receiving the signal from the Derrickman.
- b. Report to Driller for further instructions.

#### 4. Floor Man #2

- a. Notify the Tool Pusher and Operator Representative of the H2S alarms.
- b. Check for open fires and if safe to do so, extinguish them.
- c. Stop all welding operations.
- d. Turn off all non-explosion proof lights and instruments.
- e. Report to Driller for further instructions.

5. Tool Pusher

- a. Report to the rig floor.
- b. Have a meeting with all crews.
- c. Compile and summarize all information.
- d. Calculate the proper kill weight.
- e. Ensure that proper well procedures are put into action.

6. Operator Representative

- a. Notify the Drilling Superintendent.
- b. Determine if an emergency exists and if so, activate the contingency plan.

B. Drill No. 2--Tripping Pipe

1. Driller

- a. Sound the alarm immediately when mud volume increase has been detected.
- b. Position the upper tool joint just above the rotary table and set slips.
- c. Install a full opening valve or inside blowout preventor tool to close the drill pipe.
- d. Check flow.
- e. Record all data reported by the crew.
- f. Determine the course of action.

2. Derrickman

- a. Come down out of derrick.
- b. Notify Tool Pusher and Operator Representative.
- c. Check for open fires and, if safe to do so, extinguish them.
- d. Stop all welding operations.
- e. Report to Driller for further instructions.

3. Floor Man #1
  - a. Pick up full opening valve or inside blowout preventers and stab into tool joint above rotary table (with Floor Man #2).
  - b. Tighten valve with back-up tongs.
  - c. Close pipe rams after signal from Floor Man #2.
  - d. Read accumulator pressure and check for possible high-pressure fluid leaks in valves or piping.
  - e. Report to Driller for further instructions.
4. Floor Man #2
  - a. Pick-up full opening valve or inside blowout preventers and stab into tool joint above rotary table (with Floor Man #1).
  - b. Position back-up tongs on drill pipe.
  - c. Open choke line valve at BOP.
  - d. Signal Floor Man #1, at accumulator, that choke line is open.
  - e. Close choke and upstream valve after pipe rams have been closed.
  - f. Check for leaks on BOP stack and choke manifold.
  - g. Read annular pressure.
  - h. Report readings to the Driller.
5. Tool Pusher
  - a. Report to rig floor.
  - b. Have a meeting with all crews.
  - c. Compile and summarize all information.
  - d. Calculate proper kill weight.
  - e. See that proper well kill procedures are put into action.
6. Operator Representative
  - a. Notify Drilling Superintendent.
  - b. Determine if an emergency exists, and if so, activate the contingency plan.

### III. IGNITION PROCEDURES SECTION

#### Responsibility

The decision to ignite the well is the responsibility of the **DRILLING FOREMAN** in concurrence with the **STATE POLICE**. In the event the Drilling Foreman is incapacitated, it becomes the responsibility of the **RIG TOOL PUSHER**. This decision should be made only as a last resort and in a situation where it is clear that:

1. Human life and property are endangered.
2. There is no hope of controlling the blowout under the prevailing conditions.

If time permits, notify the main office, but do not delay if human life is in danger. Initiate the first phase of the evacuation plan.

#### Instructions for Igniting the Well

1. Two people are required for the actual igniting operation. Both men must wear self-contained breathing apparatus and attach a safety rope. One man must monitor the atmosphere for explosive gases with the Explosimeter, while the Drilling Foreman is responsible for igniting the well.
2. The primary method to ignite is a 25mm flare gun with a range of approximately 500 feet.
3. Ignite from upwind and do not approach any closer than is warranted.
4. Select the ignition site best suited for protection and which offers an easy escape route.
5. Before igniting, check for the presence of combustible gases.
6. After igniting, continue emergency actions and procedures as before.
7. All unassigned personnel will limit their actions to those directed by the Drilling Foreman.

**NOTE:** After the well is ignited, burning Hydrogen Sulfide will convert to Sulfur Dioxide, which is also highly toxic. Do not assume the area is safe after the well is ignited.

#### IV. TRAINING PROGRAM SECTION

##### Training Requirements

When working in an area where Hydrogen Sulfide gas (H<sub>2</sub>S) might be encountered, definite training requirements must be carried out. The Company Supervisor will insure that all personnel, at the well site, have had adequate training in the following:

1. Hazards and characteristics of H<sub>2</sub>S.
2. Physical effects of Hydrogen Sulfide on the human body.
3. Toxicity of Hydrogen Sulfide and Sulfur Dioxide.
4. H<sub>2</sub>S detection.
5. Emergency rescue.
6. Resuscitators.
7. First aid and artificial resuscitation.
8. The effects of H<sub>2</sub>S on metals.
9. Location Safety.

Service company personnel and visiting personnel must be notified in the zone contains H<sub>2</sub>S. Each service company must provide adequate training and equipment for their employees before they arrive at the well site.

## **V. EMERGENCY EQUIPMENT SECTION**

### **Emergency Equipment Requirements**

#### **I. Signs**

- A. Located at the location entrance with the following information:

**CAUTION - POTENTIAL POISON GAS  
HYDROGEN SULFIDE  
NO ADMITTANCE WITHOUT AUTHORIZATION**

#### **II.\* Fresh air breathing equipment**

- A. Air line units for all rig personnel on location.  
B. Cascade system with hose lines to rig floor and one to the Derrickman and other operation areas. Spare cascade (trailer) on location.

#### **III. Wind Socks or Wind Streamers**

- A. Two 10" windsocks located at strategic locations at a height visible from the rig floor.  
B. Wind streamers (if preferred) to be placed at various locations on the well site to insure wind consciousness at all times. (Corners of location).

#### **IV. Hydrogen Sulfide detector and alarms.**

- A. 1 - four channel H<sub>2</sub>S monitor with alarms.  
B. 4 - Sensors, located at floor, bell nipple, shale shaker and pits.  
\* C. Hand operated detectors with tubes.  
\* D. H<sub>2</sub>S monitor tester.

#### **V. Condition sign and flags**

- A. One each of green, yellow and red condition flags to be displayed to denote conditions:

<b>GREEN</b>	<b>Normal Conditions</b>
<b>YELLOW</b>	<b>Potential Danger</b>
<b>RED</b>	<b>Danger, H<sub>2</sub>S Present</b>

- B. The condition flag shall be posted at the location entrance.

#### **VI.\* Auxiliary rescue equipment**

- A. Stretcher  
B. Two 100' lengths of 5/8" nylon rope.

#### **VII.\* Mud Inspection devices**

- A. Garrett Gas Train or Hach Tester for inspection of Hydrogen Sulfide concentration in the mud system.

#### **VIII. Fire Extinguishers**

- A. Adequate fire extinguishers shall be located at strategic locations.

#### **IX. Blowout prevention equipment**

- A. The well shall have hydraulic BOP equipment for the anticipated BHP.  
B. Equipment must be tested upon installation.

#### **X.\* Combustible gas detectors**

- A. There shall be one combustible gas detector on location at all times.

- XI. BOP Testing
  - A. BOP, Choke Line and Kill Line will be tested as specified by operator
- XII. Audio System
  - A. Radio communications shall be available at the rig.
  - B. Radio communications shall be available at the rig floor or trailer.
  - C. Radio communications shall be available on vehicles.
- XIII. Special control equipment
  - A. Hydraulic BOP equipment with remote control on ground.
  - B. Rotating head at surface casing point.
- XIV. Evacuation Plan
  - A. Evacuation routes should be established prior to spudding each well.
  - B. Should be discussed with all rig personnel.
- XV. Designated Areas
  - A. Parking and visitor area.
    - 1. All vehicles are to be parked at a pre-determined safe distance from the wellhead.
    - 2. Designated smoking area.
  - B. Safe Briefing Area
    - 1. Two Safe Briefing Areas shall be designated on either side of the location at the maximum allowable distance from the well bore so they offset prevailing winds or they are at a 180 degree angle if wind directions tend to shift in the area.
    - 2. Personal protective equipment should be stored in both protection centers or if a moveable trailer is used, it should be kept upwind of existing winds. When wind is from the prevailing direction, both protection centers should be accessible.

- \*Additional equipment will be available at Callaway Safety Equipment Co., Inc., 3229 N. Industrial, Hobbs, New Mexico (505) 392-2973
- Additional personal Hydrogen Sulfide monitors on location for all hands.
- Automatic Flare igniter installed on rig.

## VI. CHECK LIST SECTION

### Status Check List

**NOTE:** Date each item as they are implemented.

1. Sign at location entrance \_\_\_\_\_
2. Two (2) windsocks (in required locations) \_\_\_\_\_
3. Wind streamers (if required) \_\_\_\_\_
4. 30 minute pressure demand air packs on location  
for all rig personnel and mud loggers. \_\_\_\_\_
5. Air packs, inspected and ready for use. \_\_\_\_\_
6. Spare bottles for each air pack (if required) \_\_\_\_\_
7. Cascade system and hose line hook up \_\_\_\_\_
8. Cascade system for refilling air bottles \_\_\_\_\_
9. Choke manifold hooked up and tested  
(Before drilling out surface casing) \_\_\_\_\_
10. Remote Hydraulic BOP control (hooked up and  
tested before drilling out surface casing) \_\_\_\_\_
11. BOP Preventer tested (before drilling out  
surface casing) \_\_\_\_\_
12. Mud engineer on location with equipment to test  
mud for Hydrogen Sulfide \_\_\_\_\_
13. Safe Briefing Areas set up \_\_\_\_\_
14. Condition sign and flags on location and ready \_\_\_\_\_
15. Hydrogen Sulfide detection system hooked up \_\_\_\_\_
16. Hydrogen Sulfide alarm system hooked up \_\_\_\_\_
17. Stretcher on location at Safe Briefing Area \_\_\_\_\_
18. 1 - 100' length of 5/8" nylon rope on location \_\_\_\_\_
19. 1 - 20 # or 30 # ABC fire extinguisher in safety  
trailer in addition to those on rig \_\_\_\_\_
20. Combustible gas detector on location and tested \_\_\_\_\_



- 21. All rig crews and supervisors trained (as required) \_\_\_\_\_
- 22. Access restricted for unauthorized personnel \_\_\_\_\_
- 23. Drills on H2S and well control procedures \_\_\_\_\_
- 24. All outside service contractors advised of potential  
Hydrogen Sulfide on well \_\_\_\_\_
- 25. **NO SMOKING** sign posted \_\_\_\_\_
- 26. Hand operated H2S detector with tubes on location \_\_\_\_\_
- 27. 25 mm flare gun with flares \_\_\_\_\_
- 28. Automatic Flare igniter installed on rig \_\_\_\_\_

## **Procedural Check List**

### **Perform the following on each tour:**

1. Check fire extinguishers to see that they have the proper charge.
2. Check breathing equipment to insure that it has not been tampered with.
3. Check pressure on supply air bottles to see that they are capable of recharging.
4. Make sure all of the Hydrogen Sulfide detection systems are operative.

### **Perform the following each week:**

1. Check each piece of breathing equipment to make sure that the demand regulator is working. This requires that the bottle be opened and the mask assembly be put on tight enough so that when you inhale, you get air.
2. Blowout preventer skills.
3. Check supply pressure on BOP accumulator stand-by source.
4. Check all work/escape units for operation: demand regulator, escape bottle air volumes, and supply bottle air volume.
5. Check breathing equipment mask assembly to see that straps are loosened and turned back.
6. Check pressure on breathing equipment air bottles to make sure they are charged to full volume.
7. Check breathing equipment air bottles to make sure all demand regulators are working. This requires that the bottles be opened and the mask assembly be put on tight enough so that when you inhale, you get air.
8. Confirm pressure on all supply air bottles.
9. Perform breathing equipment drills with on-site personnel.

### **Check the following supplies for availability:**

- a. Stretcher
  - b. Safety belts and ropes
  - c. Emergency telephone lists
  - d. Spare air bottle
  - e. Spare oxygen bottles (if resuscitator required)
  - f. Hand operated H<sub>2</sub>S detectors and tubes
10. Test the Explosimeter to verify batteries are good.

## **VII. BRIEFING PROCEDURE SECTION**

### **Briefing Procedures**

The following scheduled briefings will be held to insure the effective drilling and operation of this project:

#### **Pre-Spud Meeting**

**Date:** Prior to spudding the well

**Attendance:** Drilling Supervisor  
Drilling Engineer  
Drilling Foreman  
Rig Pushers  
Rig Driller  
Mud Engineer  
All Safety Personnel  
Service Companies

**Purpose:** Review and discuss the well program, step by step, to insure complete understanding of assignments and responsibilities.

## **VIII. EVACUATION PLAN SECTION**

### **General Plan**

The direct lines of action prepared by CALLAWAY SAFETY EQUIPMENT CO., INC. to protect the public from hazardous gas situations are as follows:

1. When the company approved supervisor (Drilling Foreman, Tool Pusher, Driller) determine Hydrogen Sulfide gas cannot be limited to the well location and the public will be involved, he will activate the evacuation plan. Escape routes are noted on the Area map.
2. Company safety personnel or designee will notify the appropriate local government agency that a hazardous condition exists and evacuation needs to be implemented.
3. Company approved safety personnel that have been trained in the use of Hydrogen Sulfide detection equipment and self-contained breathing equipment will be utilized.
4. Law Enforcement personnel (State Police, Sheriff's Department, local Police Department and local Fire Department) will be called to aid in setting up and maintaining roadblocks. Also, they will aid in evacuation of the public if necessary.

**NOTE:** Law enforcement personnel will not be asked to come into a contaminated area. Their assistance will be limited to uncontaminated areas. Constant radio contact will be maintained with them.

5. After the discharge of gas has been controlled, "Company" safety personnel will determine when the area is safe for re-entry.

**See Emergency Reaction Plan**

## EMERGENCY ASSISTANCE TELEPHONE LIST

### PUBLIC SAFETY

---

Carlsbad P.D.	(505) 885-2111 or 911
Eddy County Sheriff's Department	(505) 887-7551 or 911
New Mexico State Police	(505) 437-1313 or 911
Carlsbad Fire Department	(505) 885-2111 or 911
New Mexico OCD (Tim Gum)	(505) 748-1283
New Mexico D.O.T.	(505) 827-5100
U.S. Dept. of Labor	(505) 248-5302

### YATES PETROLEUM CORPORATION

**(505) 748-1471**

---

Jim Krogman	Drilling Superintendent	(505) 748-1471 (office)
		(505) 365-8340 (cell)
		(505) 746-2674 (home)
Tim Bussell	Assistant Drlg. Supt.	(505) 748-4221 (office)
		(505) 365-5695 (cell)
		(505) 746-2121 (home)
Steve Cochran	Drilling Foreman	(505) 748-4222 (office)
		(505) 365-4029 (cell)
		(505) 746-1325 (home)

### SAFETY CONTRACTOR

---

Callaway Safety Equipment	(505) 392-2973 (Hobbs)
	(432) 561-5049 (Odessa)

**Affected Public Notification List**  
(within a 65' radius of exposure @ 100 ppm)

The geologic zones that will be encountered during drilling are known to contain hazardous quantities of H<sub>2</sub>S. The accompanying map illustrates the affected areas of the community. The residents within this radius will be notified via a hand delivered written notice describing the activities, potential hazards, and conditions of evacuation, evacuation drill siren alarms and other precautionary measures.

**Evacuee Description:** Residents

**Notification Process:** A continuous siren audible to all residents will be activated; signaling evacuation of previously notified and informed residents.

**Evacuation Plan:** All evacuees will migrate lateral to the wind direction.

The Oil Company will identify all homebound or highly susceptible individuals and make special evacuation preparations, interfacing with the local fire and emergency medical services as necessary.

**X. GENERAL INFORMATION SECTION**

Well Name . . . COUNTRY CLUB AYK #1  
Location. . . 21S 26E 25 K 001 EDD NM  
Orig. Entry Dt. 7/28/2004

Directions to Location

AT THE CORNER OF HWY 285 AND CALLAWAY ROAD (JUST BEFORE  
THE HOSPITAL) IN CARLSBAD TURN LEFT ON CALLAWAY ROAD AND  
GO 1.4 MILES TO CHERRY LANE. TURN RIGHT ON CHERRY LANE  
AND GO .3 OF A MILE TO SANDY ROAD. THERE IS A PARK ON  
THE RIGHT. THE NEW ROAD WILL START HERE ON THE EAST SIDE  
OF THE PARK. TURN RIGHT AND FOLLOW THE LEASE ROAD TO THE  
SOUTH TO THE TRACY AXW STATE #1 LOCATION. THE COUNTRY  
CLUB AYK #1 IS LOCATED 30 FEET SOUTH AND 70' EAST OF THE  
WELL HEAD ON THE TRACY #1 LOCATION.

More...

F3=Exit F12=Previous F4=Prompt F2=Main F6=Geological Prog. F7=Drilling Prog.  
F8=Mud Prog. F9=Other Instr. F10=Directions to Loc. F13=Vendor Check List  
F14=Duplicate



est Formation	Depth Measured	TVD	Country Club AYK		3145	GL 3127
			Subsea tvd	KB		
Delaware	2270	2268	877			
Bone Spring	4872	4806	1661			
Third BoneSp Sd	8624	8286	5141			
Wolfcamp	9071	8703	5558			
Strawn	10500	10058	6913			
Atoka	10758	10310	7165			
Morrow Lime	11366	10907	7762			
Lower Morrow	11800	11349	8204			
Chester	11950	11499	8354			
TD	12106	11654	8509			

Proposed

Tops dependent on directional wellpath  
T21S-R26E  
Surf Loc Sec. 25, 660 FEL, 1650 FSL  
PBHL Sec 36, 660 FNL, 680 FEL

TVD

17'1/2 x 13'1/8" e 600'

12'1/4 x 9'5/8" e 2350'

8'3/4 x 7" e 8703'

6'1/8 x 4'1/2" e 11,654'

IX. MAPS AND PLATS SECTION

### Toxic Effects of Hydrogen Sulfide Poisoning

Hydrogen Sulfide is extremely toxic. The acceptable ceiling concentration for eight-hour exposure is 20 ppm, which is .002% by volume. Hydrogen Sulfide is heavier than air (specific gravity - 1.192) and colorless. It forms an explosive mixture with air between 4.3 and 46.0 percent by volume. Hydrogen Sulfide is almost as toxic as Hydrogen Cyanide and is between five and six times more toxic than Carbon Monoxide. Toxicity data for Hydrogen Sulfide and various other gases are compared below in Table I. Physical effects at various Hydrogen Sulfide levels are shown in Table II.

**Table I**  
Toxicity of Various Gases

Common Name	Chemical Formula	Specific Gravity	Threshold Limit (A)	Hazardous Limit (B)	Lethal Concentration (C)
Hydrogen Cyanide	HCN	0.94	10 ppm	150 ppm/hr	300 ppm
Hydrogen Sulfide	H <sub>2</sub> S	1.18	10 ppm (D) 20 ppm (E)	250 ppm/hr	600 ppm
Sulfur Dioxide	SO <sub>2</sub>	2.21	5 ppm		1000 ppm
Chlorine	CL <sub>2</sub>	2.45	1 ppm	4 ppm/hr	1000 ppm
Carbon Monoxide	CO	0.97	50 ppm	400 ppm/hr	1000 ppm
Carbon Dioxide	CO <sub>2</sub>	1.52	5000 ppm	(5 %)	(10 %)
Methane	CH <sub>4</sub>	0.55	90,000 ppm	(9 %)	Combustible Above 5% in air

- A. **Threshold Limit** - Concentration at which it is believed that all workers may be repeatedly exposed day after day without adverse effects.
- B. **Hazardous Limit** - Concentration that may cause death.
- C. **Lethal Concentration** - Concentration that will cause death with short-term exposure.
- D. **Threshold Limit (10 ppm)** - 1972 ACGIH (American Conference of Governmental Industrial Hygienists).
- E. **Threshold Limit (20 ppm)** - 1966 ANSI acceptable ceiling concentration for eight-hour exposure (based on 40 hour week) is 20 ppm. OSHA Rules and Regulations (Federal Register, Volume 37, No. 202, Part II, dated 10/18/72)

**Table II**  
Physical Effects of Hydrogen Sulfide

Percent (%)	ppm	Physical Effects
0.001	10	Obvious and unpleasant odor
0.002	20	Safe for 8 hrs. exposure
0.01	100	Kills smell in 3-5 minutes; may sting eyes & throat
0.02	200	Kills smell shortly; stings eyes and throat
0.03	300	IDLH (Immediate Danger to Life and Health) Level
0.05	500	Dizziness; breathing ceases in a few minutes
0.07	700	Unconscious quickly; death will result if not rescued
0.10	1000	Unconscious at once; followed by death within minutes

**\* CAUTION: Hydrogen Sulfide is a colorless and transparent gas and is highly flammable. It is heavier than air and may accumulate in low places.**

## Use of Self-Contained Breathing Apparatus

(SCBA)

- I. Written procedures shall be prepared covering safe use of respirators in dangerous atmospheric situations, which might be encountered in normal operations or in emergencies. Personnel shall be familiar with these procedures and the available respirators.
- II. Respirators shall be inspected frequently, at random, to insure that they are properly used, cleaned and maintained.
- III. Anyone who may use respirators shall be trained in how to properly seal the face piece. They shall wear respirators in normal air and then in a test atmosphere. **(NOTE: Such items as facial hair (beard or sideburns) and eyeglass temple pieces will not allow a proper seal).** Anyone that may be expected to wear respirators should have these items removed before entering a toxic atmosphere. A special mask must be obtained for anyone who must wear eyeglasses. Contact lenses should not be allowed.
- IV. Maintenance and care of Respirators
  - A. A program of maintenance and care of respirators shall include the following:
    1. Inspection for defects, including leak checks.
    2. Cleaning and disinfecting.
    3. Repair
    4. Storage
  - B. Inspection: Self Contained Breathing Apparatus (SCBA) for emergency use shall be inspected monthly and records maintained for the following:
    1. Fully charged cylinders.
    2. Regulator and warning device operation.
    3. Condition of face piece and connection.
    4. Elastomer or rubber parts shall be stretched or massaged to keep them pliable and prevent deterioration.
  - C. Routinely used respirators shall be collected, cleaned and disinfected as frequently as necessary to insure proper protection is provided.
- V. Persons assigned tasks that require the use of Self Contained Breathing Equipment shall be certified physically fit for breathing equipment usage by the local company physician at least annually.
- VI. Respirators should be worn during the following conditions:
  - A. Any employee who works near the top or on the top of any tank unless tests reveal less than 20 ppm of H<sub>2</sub>S.
  - B. When breaking out any line where H<sub>2</sub>S can reasonably be expected.
  - C. When sampling air in areas to determine if toxic concentrations of H<sub>2</sub>S exist.
  - D. When working in areas where over 20 ppm H<sub>2</sub>S has been detected.
  - E. At any time there is a doubt as to the H<sub>2</sub>S level in the area to be entered.

## **Rescue-First Aid for Hydrogen Sulfide Poisoning**

**DO NOT PANIC !!!!**

**Remain Calm -- THINK**

1. Hold your breath (Do not inhale; stop breathing) and go to Briefing Area.
2. Put on breathing apparatus.
3. Remove victim(s) to fresh air as quickly as possible. (Go upwind from the source or at right angles to the wind; **NOT** downwind).
4. Briefly apply chest pressure-arm lift method of artificial respiration to clear the victim's lungs and to avoid inhaling any toxic gas directly from the victim's lungs.
5. Provide for prompt transportation to the hospital and continue giving artificial respiration if needed.
6. Hospital(s) or medical facilities need to be informed, beforehand, of the possibility of H<sub>2</sub>S gas poisoning, no matter how remote the possibility.
7. Notify emergency room personnel that the victim(s) have been exposed to H<sub>2</sub>S gas.

Besides basic first aid, everyone on location should have a good working knowledge of artificial respiration, as well as first aid for eyes and skin contact with liquid H<sub>2</sub>S. Everyone needs to master these necessary skills.

MARTIN YATES, III  
1912 - 1985  
FRANK W. YATES  
1936 - 1986



105 SOUTH FOURTH STREET  
ARTESIA, NEW MEXICO 88210-2118  
TELEPHONE (505) 748-1471

S. P. YATES  
CHAIRMAN OF THE BOARD  
JOHN A. YATES  
PRESIDENT  
PEYTON YATES  
EXECUTIVE VICE PRESIDENT  
RANDY G. PATTERSON  
SECRETARY  
DENNIS G. KINSEY  
TREASURER

July 28, 2004

Mr. Bryan Arrant  
NMOCD  
Artesia, NM 88210

RECEIVED

AUG 11 2004

ARTESIA

RE:

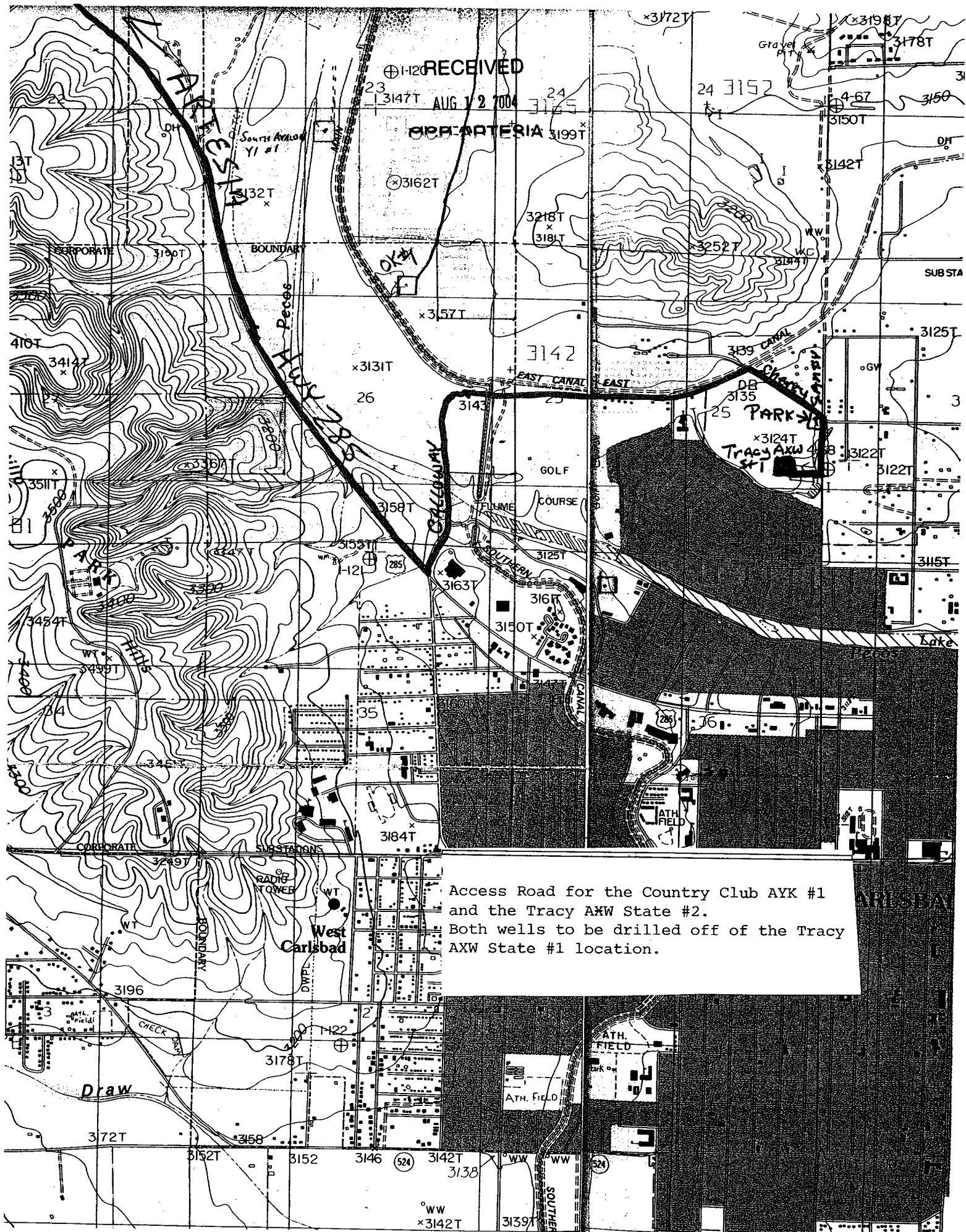
Country Club AYK #1  
1980 FSL 1980 FWL  
S25-T21S-25E

Dear Bryan,

The BOP pipe rams will be function tested on a daily basis and the blind rams will be function tested on all trips due to the close proximity of dwellings as per Mr. Gum's request. This of course will follow the NU and testing of the BOPE.

Sincerely,

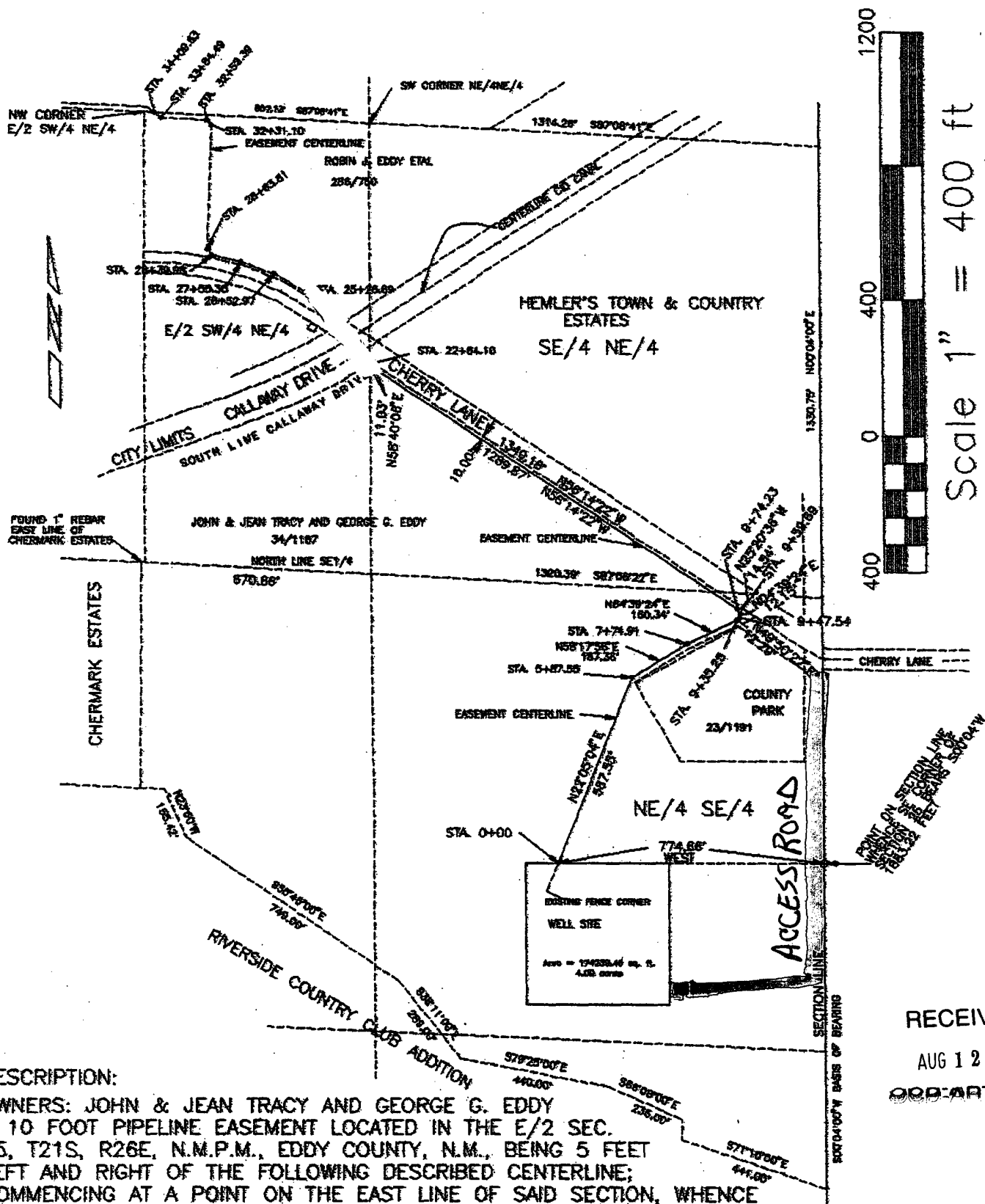
Pinson McWhorter





# PIPELINE EASEMENT SURVEY

A 10 FOOT EASEMENT LOCATED IN THE EAST-HALF OF SECTION 25, T21S, R26E, N.M.P.M., EDDY COUNTY, NEW MEXICO.



## DESCRIPTION:

OWNERS: JOHN & JEAN TRACY AND GEORGE G. EDDY

A 10 FOOT PIPELINE EASEMENT LOCATED IN THE E/2 SEC.

25, T21S, R26E, N.M.P.M., EDDY COUNTY, N.M., BEING 5 FEET

LEFT AND RIGHT OF THE FOLLOWING DESCRIBED CENTERLINE;

COMMENCING AT A POINT ON THE EAST LINE OF SAID SECTION, WHENCE

THE SE CORNER OF SAID SECTION BEARS S00°04'W A DISTANCE OF

1883.22 FEET; THENCE WEST 774.66 FEET TO ENG. STA. 0+00 BEING THE POINT

OF BEGINNING; THENCE N22°05'04"E A DISTANCE OF 587.55 FEET TO ENG. STA. 5+87.55;

THENCE N58°17'56"E A DISTANCE OF 187.36 FEET TO ENG. STA. 7+74.91; THENCE

N64°39'24"E A DISTANCE OF 160.34 FEET TO ENG. STA. 9+35.25; THENCE

N49°50'22"E A DISTANCE OF 12.29 FEET TO ENG. STA. 9+47.54; THENCE

N04°39'24"E A DISTANCE OF 12.15 FEET TO ENG. STA. 9+59.69; THENCE

N25°20'36"W A DISTANCE OF 14.54 FEET TO ENG. STA. 9+74.23; THENCE

N56°14'22"W A DISTANCE OF 1289.87 FEET TO ENG. STA. 22+64.10, BEING A POINT

ON THE SOUTH LINE OF CALLAWAY DRIVE, WHENCE THE INTERSECTION OF THE SOUTH LINE

OF CALLAWAY DRIVE AND THE SOUTH LINE OF CHERRY LANE BEARS N58°40'06"E A DISTANCE

OF 11.03 FEET. CONTAINING 0.52 ACRES MORE OR LESS. 2264.10 FEET = 137.22 RODS.

## CERTIFICATION OF RESPONSIBLE SURVEYOR:

THIS IS TO CERTIFY THAT THE FOREGOING PLAT WAS MADE FROM FIELD NOTES OF A BONA FIDE SURVEY, MADE BY ME, MEETING THE MINIMUM STANDARDS FOR SURVEYING IN NEW MEXICO, AND IS TRUE AND CORRECT TO THE BEST OF MY KNOWLEDGE AND BELIEF.

DAN R. REDDY NM PERS. NO. 5412  
401 W. GREENE ST./P.O. BOX 597  
CARLSBAD, NEW MEXICO 88221-0597  
505 887-6483 SURVEYED: FEB. 2002  
PREPARED FOR: AGAVE ENERGY CO.



RECEIVED

AUG 12 2004

ODD ARTESIA