

UNITED STATES
DEPARTMENT OF THE INTERIOR
BUREAU OF LAND MANAGEMENT

WELL COMPLETION OR RECOMPLETION REPORT AND LOG

FORM APPROVED
OMB NO. 1004-0137
Expires: March 31, 2007

1a. Type of Well Oil Well Gas Well Dry Other
 b. Type of Completion: New Well Work Over Deepen Plug Back Diff. Resvr.,
 Other _____

5. Lease Serial No.
US NM 100586

6. If Indian, Allottee or Tribe Name

7. Unit or CA Agreement Name and No.
33561

8. Lease Name and Well No.
Wagon Wheel 13 Federal #1

9. AFI Well No.
30-015-33260

2. Name of Operator **Cimarex Energy Co**

3. Address **15 E 5th St, Ste 1000 Tulsa, OK 74103**

3a. Phone No. (include area code)
918-295-1727

10. Field and Pool, or Exploratory

4. Location of Well (Report location clearly and in accordance with Federal requirements)*

At surface **Sec 13 T22S R22E NESW 1980' FSL & 1980' FWL**

Indian Res. in Morrow, SW

At top prod. interval reported below

11. Sec., T., R., M., on Block and Survey or Area **Sec 13-T22S-R22E**

At total depth

12. County or Parish **Eddy** 13. State **NM**

14. Date Spudded
02/29/2004

15. Date T.D. Reached
03/28/2004

16. Date Completed **04/22/2004**
 D & A Ready to Prod.

17. Elevations (DF, RKB, RT, GL)*
4383' KB

18. Total Depth: MD **9880**
TVD

19. Plug Back T.D.: MD **9718**
TVD

20. Depth Bridge Plug Set: MD
TVD

21. Type Electric & Other Mechanical Logs Run (Submit copy of each)
BCS-NGT

22. Was well cored? No Yes (Submit analysis)
Was DST run? No Yes (Submit report)
Directional Survey? No Yes (Submit copy)

23. Casing and Liner Record (Report all strings set in well)

Hole Size	Size/Grade	Wt. (#/ft.)	Top (MD)	Bottom (MD)	Stage Cementer Depth	No. of Sk. & Type of Cement	Slurry Vol. (BBL)	Cement Top*	Amount Pulled
17.5	13.75	61.0	Surface	1050		950	414	Surface	0
12.25	9.625	36	Surface	2300		540	208	Surface	0
7.875	5.50	17	Surface	9870		1000	241	5163'	0

24. Tubing Record

Size	Depth Set (MD)	Packer Depth (MD)	Size	Depth Set (MD)	Packer Depth (MD)	Size	Depth Set (MD)	Packer Depth (MD)
2.875	9429	9421						

25. Producing Intervals

Formation	Top	Bottom	Perforated Interval	Size	No. Holes	Perf. Status
A) Morrow	9471	9549	9471 to 9549	.450	104	Open
B)						
C)						
D)						

27. Acid, Fracture, Treatment, Cement Squeeze, etc.

Depth Interval	Amount and Type of Material

RECEIVED

JUN 23 2004

OOB-ARTESIS

28. Production - Interval A

Date First Produced	Test Date	Hours Tested	Test Production	Oil BBL	Gas MCF	Water BBL	Oil Gravity Corr. API	Gas Gravity	Production Method
04/22/2004	04/22/2004	24	→	0	2100	1.0	0.0	.71	
Choke Size	Tbg. Press. Flwg. SI	Csg. Press.	24 Hr. Rate	Oil BBL	Gas MCF	Water BBL	Gas/Oil Ratio	Well Status	
14/64	SI 1600	0.0	→	0	2100	1.0	0		PGW

28a. Production - Interval B

Date First Produced	Test Date	Hours Tested	Test Production	Oil BBL	Gas MCF	Water BBL	Oil Gravity Corr. API	Gas Gravity	Production Method
			→						
Choke Size	Tbg. Press. Flwg. SI	Csg. Press.	24 Hr. Rate	Oil BBL	Gas MCF	Water BBL	Gas/Oil Ratio	Well Status	
	SI		→						

*(See instructions and spaces for additional data on page 2)

28b. Production - Interval C

Date First Produced	Test Date	Hours Tested	Test Production →	Oil BBL	Gas MCF	Water BBL	Oil Gravity Corr. API	Gas Gravity	Production Method
Choke Size	Tbg. Press. Flwg. SI	Csg. Press.	24 Hr. Rate →	Oil BBL	Gas MCF	Water BBL	Gas/Oil Ratio	Well Status	

28c. Production - Interval D

Date First Produced	Test Date	Hours Tested	Test Production →	Oil BBL	Gas MCF	Water BBL	Oil Gravity Corr. API	Gas Gravity	Production Method
Choke Size	Tbg. Press. Flwg. SI	Csg. Press.	24 Hr. Rate →	Oil BBL	Gas MCF	Water BBL	Gas/Oil Ratio	Well Status	

29. Disposition of Gas (Sold, used for fuel, vented, etc.)

30. Summary of Porous Zones (Include Aquifers):

Show all important zones of porosity and contents thereof: Cored intervals and all drill-stem tests, including depth interval tested, cushion used, time tool open, flowing and shut-in pressures and recoveries.

31. Formation (Log) Markers

Formation	Top	Bottom	Descriptions, Contents, etc.	Name	Top
					Meas. Depth
San Andres	565				
Glorieta	2174				
Yeso	2216				
Bone Springs	3172				
Wolfcamp	6024				
Clisco	7469				
Canyon	7962				
Strawn	8150				
Atoka	8545				
Morrow	9162				

32. Additional remarks (include plugging procedure):

33. Indicate which items have been attached by placing a check in the appropriate boxes:

- Electrical/Mechanical Logs (1 full set req'd.)
 Geologic Report
 DST Report
 Directional Survey
 Sundry Notice for plugging and cement verification
 Core Analysis
 Other:

34. I hereby certify that the foregoing and attached information is complete and correct as determined from all available records (see attached instructions)*

Name (please print) Michelle Farrell Title Drilling Tech

Signature Michelle Farrell Date 04/28/2004

Title 18 U.S.C Section 1001 and Title 43 U.S.C Section 1212, make it a crime for any person knowingly and willfully to make to any department or agency of the United States any false, fictitious or fraudulent statements or representations as to any matter within its jurisdiction.



COMPANY : CIMAREX ENERGY INC.
LEASE : WAGON WHEEL "13" FEDERAL
WELL NO. : # 1
FIELD :
COUNTY/STATE : EDDY/NEW MEXICO

TEST DATE : 03/26/04
D.S.T. NO. : 1
TEST TKT. NO. : 22824
INVOICE NO. : 20775
ORDER NO. : 214014

FORMATION : MORROW SAND
INTERVAL (ft) : 9380 TO 9535
TOTAL DEPTH (ft) : 9535
ELEVATION (ft) : 4364

HOLE SIZE (in) : 7.875
DRILL PIPE ID (in) : 3.82
DRILL COLLAR ID(in) : 2.25
DRILL COLLAR feet : 588
ANCHOR LENGTH (ft): 155
TOOL LENGTH (ft) : 72
TOOL O.D. (in) : 5
PACKER SIZE (in) : 7.000

RECORDER DATA
AK1-KUSTER/ZIPROBES

TOP RECORDER: IN
RECORDER NO. : 9634
CAPACITY (psi): 10000
DEPTH (ft) : 9399
CLOCK NO. : 9634
DURATION (hrs): 99

BOTTOM RECORDER: OUT
RECORDER NO. : 16709
CAPACITY (psi): 7350
DEPTH (ft) : 9531
CLOCK NO. : 17909
DURATION (hrs): 24

MUD PROPERTIES

MUD TYPE : CUTBRINE / GEL
MUD WT. (#/gal) : 9.40

WATER LOSS (cc) : 9.0
FILTER CAKE (in) : 1/32
VISCOSITY (sec) : 42
CHLORIDE PPM : 57000
RESISTIVITY(ohm-m): .163

EQUIPMENT DATA

CONVENTIONAL : YES
STRADDLE : NO
SELECTIVE ZONE : NO
SAMPLE CHAMBER : YES
GAS ANALYSIS : YES
SUCCESSFUL : YES

ROTARY JARS : YES
NO. OF PACKERS : 2
SAFETY JOINT : YES
CIRCULATING SUB : YES
REVERSED OUT : YES
PACKER FAILURE : NO
MULTIFLOW : NO
MILEAGE : NO
OPERATOR TIME : NO
OTHER : YES
ELECTRONICS/MANIFOLD : YES
TOOL PLUG : NO

DECIDED NOT TO TEST : NO

FAIL TO REACH BOTTOM : NO

TIME INTERVAL DATA (min)

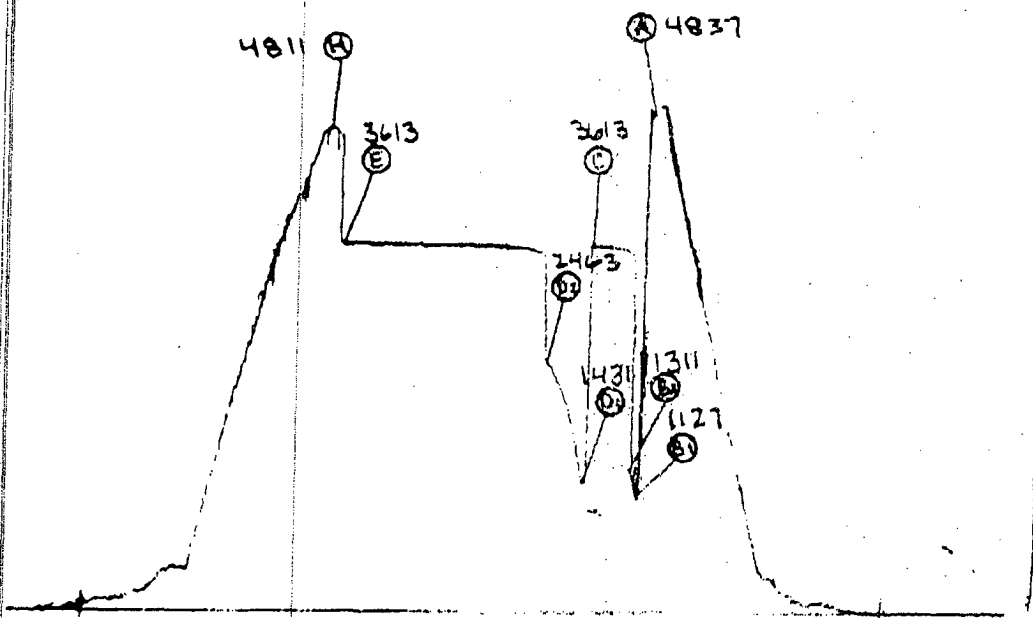
TOOL OPENED : 9:30 AM
INITIAL FLOW : 12
SECOND FLOW : 62
THIRD FLOW :

TOTAL TEST TIME : 434
INITIAL SHUT-IN: 64
SECOND SHUT-IN : 296
THIRD SHUT IN :

TEST TOOL OPERATOR: DANIEL SAMPLES

	CORRECTED READING	FIELD READING
A INITIAL HYDROSTATIC :	4802 PSI	4796 PSI
B-1 INITIAL FIRST FLOW :	1516 PSI	1100 PSI
B-2 FINAL FIRST FLOW :	1273 PSI	1293 PSI
C FIRST SHUT-IN :	3609 PSI	3609 PSI
D-1 INITIAL SECOND FLOW :	1413 PSI	1149 PSI
D-2 FINAL SECOND FLOW :	2452 PSI	2433 PSI
E SECOND SHUT-IN :	3611 PSI	3611 PSI
H FINAL HYDROSTATIC :	4781 PSI	4775 PSI

TKI-22824 REC-16709 WT-7350
AK-1 KUSTER 24 H.R. CLOCK
BOTTOM RECORDER: OUTSIDE



RECOVERY DATA

PIPE RECOVERY	B.H. TEMP. (deg F) : 171	SAMPLE CHAMBER
GAS TO SURFACE 8 MIN. INTO FIRST FLOW PERIOD		2200 LBS. OF PRESSURE
588 FT. OF HEAVY GAS CUT DRLG. FLUID		8.90 CU. FT. OF GAS
		100 CC'S OF DRLG. FLUID
		WITH TRACE OF CONDENSATE
		57,000 MG/L CHLORIDES
		.163 OHMS @ 85 DEGREES

TEST REMARKS

TOOL OPENED WITH A STRONG BLOW ON 1/4", 300 LBS. IN 5 MIN., GAS SURFACED IN 8 MIN. WITH 450 LBS. (683 MCFPD), AND 570 LBS. (859 MCFPD) AT END OF 10 MIN. FIRST FLOW. REOPENED TOOL ON 1/4" WITH 700 LB. (1050 MCFPD) IN 10 MIN 1200 LBS. (1785 MCFPD) IN 20 MIN., 1450 LBS. (2153 MCFPD) IN 30 MIN., 1600 LBS. (2373 MCFPD) IN 40 MIN., 1700 LBS. (2520 MCFPD) IN 50 MIN. & 1800 LBS (2667 MCFPD) ON 1/4" CHOKE AT END OF THE 60 MIN. FINAL FLOW PERIOD.

OPERATOR: CIMAREX ENERGY CO
WELL/LEASE: WAGON WHEEL 13 FED #1
COUNTY: EDDY, NM

512-5060

STATE OF NEW MEXICO
DEVIATION REPORT

196	1	5,615	4
441	1/4	5,804	4
690	2	5,964	4 1/4
844	1 3/4	6,103	3 1/2
1,034	1	6,232	5 1/2
1,289	3/4	6,332	4 1/4
1,514	1	6,400	3 1/4
1,768	1/2	6,527	3
2,020	3/4	6,710	2 1/4
2,276	1/4	7,033	2 1/4
2,508	3/4	7,192	3
2,730	3/4	7,445	2 1/2
2,976	3/4	7,881	1 1/2
3,232	1	8,231	3/4
3,490	1	8,742	3/4
3,743	3/4	9,250	1/4
3,998	1 1/4	9875 TD	1
4,242	2 1/2		
4,348	3		
4,411	3 1/4		
4,507	3 3/4		
4,604	4		
4,699	4		
4,792	4 1/4		
4,888	5		
5,020	5 1/4		
5,115	4 1/4		
5,174	4		
5,300	4 1/4		
5,426	4 1/4		
5,520	4		

RECEIVED
JUN 23 2004
OCC-ARTEZIA

By: *Steve Moore*

STATE OF TEXAS

COUNTY OF MIDLAND

The foregoing instrument was acknowledged before me on this 31st day of March, 2004, by Steve Moore on behalf of Patterson-UTI Drilling Company LP, LLLP.

J. Robertson
Notary Public for Midland County, Texas

My Commission Expires: 8/23/2007

