

UNITED STATES
DEPARTMENT OF THE INTERIOR
BUREAU OF LAND MANAGEMENT

N.M. Oil Cons. DIV-Dist. 2

1301 W. Grand Avenue

Artesia, NM 88210

FORM APPROVED
OMB No. 1004-0135
Expires: January 31, 2004

SUNDRY NOTICES AND REPORTS ON WELLS
Do not use this form for proposals to drill or to re-enter an abandoned well. Use Form 3160-3 (APD) for such proposals.

SUBMIT IN TRIPLICATE - Other instructions on reverse side

RECEIVED

1. Type of Well

☐ Oil Well ☒ Gas Well ☐ Other

SEP 17 2004

2. Name of Operator

Mewbourne Oil Company 14744

000-ARTESIA

3a. Address

PO Box 5270 Hobbs, NM 88240

3b. Phone No. (include area code)

505-393-5905

4. Location of Well (Footage, Sec., T, R., M., or Survey Description)

1650' FSL & 660' FWL, Sec 10-T18S-R31E Unit Letter L

5. Lease Serial No.

NM89880

6. If Indian, Allottee or Tribe Name

7. If Unit or CA/Agreement, Name and/or No.

32676

8. Well Name and No.

Tamano 10 Federal Com #3

9. API Well No.

30-015-33491

10. Field and Pool, or Exploratory Area

Shugart Morrow North

11. County or Parish, State

Eddy, NM

12. CHECK APPROPRIATE BOX(ES) TO INDICATE NATURE OF NOTICE, REPORT, OR OTHER DATA

TYPE OF SUBMISSION

TYPE OF ACTION

☐ Notice of Intent

☒ Subsequent Report

☐ Final Abandonment Notice

☐ Acidize

☐ Alter Casing

☐ Casing Repair

☐ Change Plans

☐ Convert to Injection

☐ Deepen

☐ Fracture Treat

☐ New Construction

☐ Plug and Abandon

☐ Plug Back

☐ Production (Start/Resume)

☐ Reclamation

☐ Recomplete

☐ Temporarily Abandon

☐ Water Disposal

☐ Water Shut-Off

☐ Well Integrity

☒ Other Spud and BOPE
Test

3. Describe Proposed or Completed Operation (clearly state all pertinent details, including estimated starting date of any proposed work and approximate duration thereof. If the proposal is to deepen directionally or recompleate horizontally, give subsurface locations and measured and true vertical depths of all pertinent markers and zones. Attach the Bond under which the work will be performed or provide the Bond No. on file with BLM/BIA. Required subsequent reports shall be filed within 30 days following completion of the involved operations. If the operation results in a multiple completion or recompleation in a new interval, a Form 3160-4 shall be filed once testing has been completed. Final Abandonment Notices shall be filed only after all requirements, including reclamation, have been completed, and the operator has determined that the site is ready for final inspection.)

08/31/04...MI & spud 17 1/2" hole. TD'd hole @ 716'. Ran 716' 13 3/8" 48# H40 ST&C csg. Cemented with 225 sks 35:65:6 Poz C with additives. Mixed @ 12.5 #/g w/ 1.98 yd. Tailed with 400 sk Class "C" with 2% CaCl2. Mixed @ 14.8 #/g w/ 1.34 yd. Circ 142 sks to pit. WOC 18 hrs. At 5:00 pm, test BOPE and 13 3/8" casing to 1000# for 30 minutes as required. All equipment passed. Charts and schematic attached. Drilled out with 12 1/4" bit.

09/11/04...TD'ed 12 1/4" hole @ 4497'. Ran 4497' 9 5/8" 40# P110 LT&C Csg. Cemented with 1250 sks 35:65 Poz "C" with additives. Mixed @ 12.5 /g w/ 1.96 yd. Tail with 400 sks Class "C" with 2% CaCl2. Mixed @ 14.8 #/g w/ 1.34 yd. Circ 134 sks to pit. WOC 18 hrs. At 5:30 pm, test BOPE to 5000#, 9 5/8" casing to 1000# and annular to 2500# for 30 minutes as required. All equipment passed. Charts and schematic attached. Drilled out with 8 3/4" bit.

ACCEPTED FOR RECORD

SEP 15 2004

14. I hereby certify that the foregoing is true and correct

Name (Printed/Typed)

Kristi Green

Title Hobbs Regulatory Asst

Signature

Kristi Green

Date 09/13/04

LES RARYAK
PETROLEUM ENGINEER

THIS SPACE FOR FEDERAL OR STATE OFFICE USE

Approved by (Signature)

Name
(Printed/Typed)

Title

Conditions of approval, if any, are attached. Approval of this notice does not warrant or certify that the applicant holds legal or equitable title to those rights in the subject lease which would entitle the applicant to conduct operations thereon.

Office

Date

Title 18 U.S.C. Section 1001 and Title 43 U.S.C. Section 1212, make it a crime for any person knowingly and willfully to make to any department or agency of the United States any false, fictitious or fraudulent statements or representations as to any matter within its jurisdiction.

(Continued on next page)

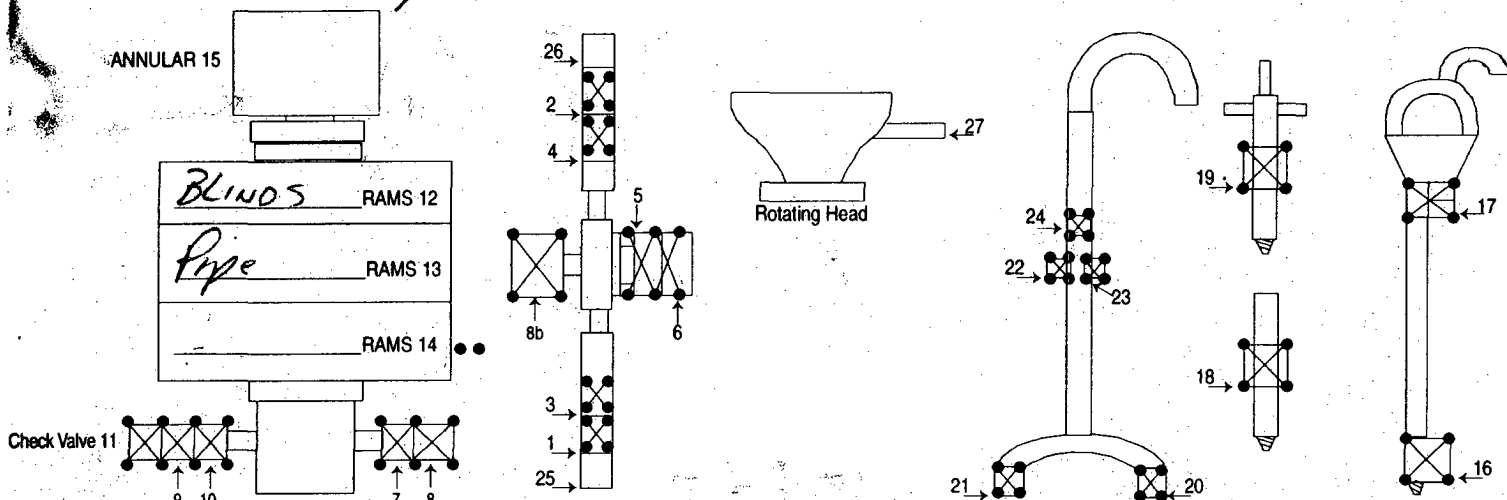
MAN WELDING SERVICES, INC.

P.O. Box 1541 • Lovington, N.M. 88260
BUS: 505 396-4540 • FAX: 505 396-0044



INVOICE
No B 2932

Company MENBOURNE OIL COMPANY Date 9-11-04 Start Time 330 ☐ am ☒ pm
Lease TAMAND 10 FEB #3 County LODY State NM
Company Man Phil Q. Pressey
Wellhead Vender _____ Tester _____
Drig. Contractor PATTERSON-UTI Rig # 48
Tool Pusher _____
Plug Type C-27 Plug Size 11" Drill Pipe Size 4 1/2 XH
Casing Valve Opened YES Check Valve Open _____



TEST #	ITEMS TESTED	TEST LENGTH	LOW PSI	HIGH PSI	REMARKS
1	12, 10, 25, 6, 26	10 min		5000	#25 Super Leaked fasts on way
2	12, 10, 1, 26, 6	10 min		5000	Leak on flange between 10 & 7
3	12, 10, 6, 2, 1	10 min		5000	
4	12, 9, 5, 3, 4	10 min		5000	Flange leak in between Pipe Rams & spool
5	12, 9, 5, 3, 4	10 min		5000	
6	13, 10, 8	10 min		5000	
7	13, 10, 7	10 min		5000	
8	15, 10, 7	10 min		2000	
9	13, 11, 7	10 min		5000	
10	16	10 min		5000	
11	17	10 min		5000	
12	18	10 min		5000	
13	19	10 min		5000	

8 HR@ 900⁰⁰
HR@ _____
Mileage _____ @ _____

SUB TOTAL 900.00
TAX 48.30
TOTAL 948.30

Mewbourne Oil Co
Toman 10 Feb #3

ASC Rev. 06/02

Accumulator Function Test - OO&GO#2

To Check - USABLE FLUID IN THE NITROGEN BOTTLES (III.A.2.c.i. or ii or iii)

- Make sure all rams and annular are open and if applicable HCR is closed.
 - Ensure accumulator is pumped up to working pressure! (Shut off all pumps)
1. Open HCR Valve. (If applicable)
 2. Close annular.
 3. Close **all** pipe rams.
 4. Open one set of the pipe rams to simulate closing the blind ram.
 5. For 3 ram stacks, open the annular to achieve the 50±% safety factor. (5M and greater systems).
 6. Record remaining pressure 1800 psi. Test Fails if pressure is lower than required.
- a. {950 psi for a 1500 psi system} b. {1200 psi for a 2000 & 3000 psi system}
 - 7. If annular is closed, open it at this time and close HCR.

RECEIVED

SEP 17 2004

OFF-ARTESIA

To Check - PRECHARGE ON BOTTLES OR SPHERICAL (III.A.2.d.)

- Start with manifold pressure at, or above, maximum acceptable pre-charge pressure:
 - a. {800 psi for a 1500 psi system}
 - b. {1100 psi for 2000 and 3000 psi system}
 - 1. Open bleed line to the tank, slowly. (gauge needle will drop at the lowest bottle pressure)
 - 2. Close bleed line. Barely bump electric pump and see what pressure the needle jumps up to.
 - 3. Record pressure drop 1000 psi. Test fails if pressure drops below minimum.
- Minimum: a. {700 psi for a 1500 psi system} b. {900 psi for a 2000 & 3000 psi system}

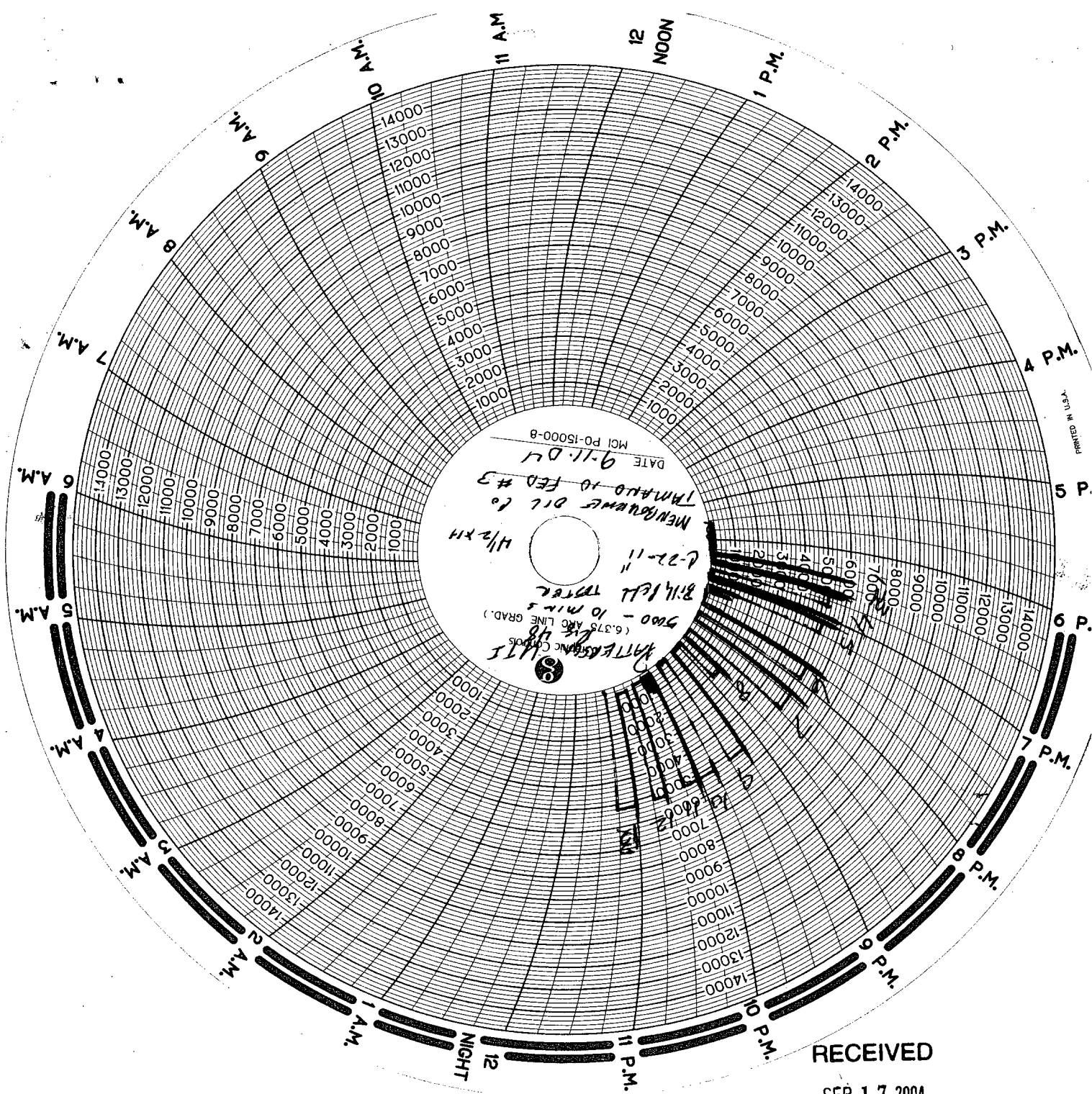
To check - THE CAPACITY OF THE ACCUMULATOR PUMPS (III.A.2.f.)

- Isolate the accumulator bottles or spherical from the pumps & manifold.
 - Open the bleed off valve to the tank, {manifold psi should go to 0 psi} close bleed valve.
1. Open the HCR valve, {if applicable}
 2. Close annular.
 3. With pumps only, time how long it takes to regain the required manifold pressure.
 4. Record elapsed time 22 sec. Test fails if it takes over 2 minutes.
- a. {950 psi for a 1500 psi system} b. {1200 psi for a 2000 & 3000 psi system}

Accumulator working pressure rating	Minimum acceptable operating pressure	Desired precharge pressure	Maximum acceptable precharge pressure	Minimum acceptable precharge pressure
1,500 psi	1,500 psi	750 psi	800 psi	700 psi
2,000 psi	2,000 psi	1,000 psi	1,100 psi	900 psi
3,000 psi	3,000 psi	1,000 psi	1,100 psi	900 psi

Usable Fluid = 1/2 of bottle volume. {11 gal. = 5.5 gal} {10 gal. = 5 gal.} {80 gal. sphere = 40 gal.}

Reservoir cap. Height x Length x Width. x 0.004329 = Gal.



RECEIVED

SEP 17 2004

ODD-ARTESIA