

District I
1625 N. French Dr., Hobbs, NM 87240
District II
811 South First, Artesia, NM 87210
District III
1000 Rio Brazos Rd., Aztec, NM 87410
District IV
2040 South Pacheco, Santa Fe, NM 87505

Energy, Minerals and Natural Resources

OIL CONSERVATION DIVISION

2040 South Pacheco
Santa Fe, NM 87505

WELL API NO.	30-015-20718
5. Indicate Type of Lease	STATE <input type="checkbox"/> FEE <input checked="" type="checkbox"/>
6. State Oil & Gas Lease No.	
7. Lease Name or Unit Agreement Name	Union Mead Fee Com
8. Well No.	1
9. Pool name or Wildcat	Carlsbad, South (Morrow)
4. Well Location	Unit Letter <u>H</u> : <u>1980</u> feet from the <u>North</u> line and <u>660</u> feet from the <u>East</u> line Section <u>8</u> Township <u>22S</u> Range <u>27E</u> NMPM County <u>Eddy</u>
10. Elevation (Show whether DR, RKB, RT, GR, etc.)	GR=3,094' RKB=3,112'

SUNDAY NOTICES AND REPORTS ON WELLS
(DO NOT USE THIS FORM FOR PROPOSALS TO DRILL OR TO DEEPEN OR PLUG BACK TO A DIFFERENT RESERVOIR. USE "APPLICATION FOR PERMIT" (FORM C-101) FOR SUCH PROPOSALS.)

1. Type of Well:
Oil Well ☐ Gas Well ☒ Other

2. Name of Operator
Devon Energy Production Co., L P

3. Address of Operator
20 N. Broadway, Suite 1500, Oklahoma City, OK 73102-8260

11. Check Appropriate Box to Indicate Nature of Notice, Report or Other Data

NOTICE OF INTENTION TO: PERFORM REMEDIAL WORK <input type="checkbox"/> PLUG AND ABANDON <input checked="" type="checkbox"/> TEMPORARILY ABANDON <input type="checkbox"/> CHANGE PLANS <input type="checkbox"/> PULL OR ALTER CASING <input type="checkbox"/> MULTIPLE COMPLETION <input type="checkbox"/> OTHER: <input type="checkbox"/>	SUBSEQUENT REPORT OF: REMEDIAL WORK <input type="checkbox"/> ALTERING CASING <input type="checkbox"/> COMMENCE DRILLING OPNS. <input type="checkbox"/> PLUG AND ABANDONMENT <input type="checkbox"/> CASING TEST AND CEMENT JOBS <input type="checkbox"/> OTHER: <input type="checkbox"/>
--	--

12. Describe proposed or completed operations. (Clearly state all pertinent details, and give pertinent dates, including estimated date of starting and proposed work). SEE RULE 1103. For Multiple Completions: Attach diagram of proposed completion or recompletion.

Devon Proposes To Plug And Abandon As Follows:

- Set CIBP at 7,850' and cap with 25 sxs cement.
- Circulate wellbore full with 9.5ppg mud.
- Freepoint and cut off 7 5/8" production casing. POOH with casing and LD.
- Pump balanced cement plug 50' in/out of 7 5/8" casing stub. WOC. Tag plug.
- Pump balanced cement plug 3,600'- 3,700'. WOC. Tag plug.
- Pump balanced cement plug 1,825'- 1,925' (intermediate casing shoe at 1,875'). WOC. Tag plug.
- Spot balanced cement plug 1,380'- 1,480' (base of salt section at 1,430'). WOC. Tag plug.
- Spot balanced cement plug 980'- 1,080' (top of salt at 1,030'). WOC. Tag plug.
- Pump balanced cement plug 265'- 365' (surface casing shoe at 316'). WOC. Tag plug.
- Spot cement plug 0'- 60'. WOC 24 hours. Tag plug.
- Check 10 3/4"- 13 3/8" annulus for cement, 1" to surface if neccessary.
- Cut off casing 3' below surface and weld on dry hole marker.
- Haul off surplus equipment, clean up and restore location.

100' Plug - 5040'-
5140'

I hereby certify that the information above is true and complete to the best of my knowledge and belief.

SIGNATURE Charles H. Carleton TITLE Senior Engineering Technician DATE 04/25/2003

Type or print name Charles H. Carleton Telephone No. (405)552-4528

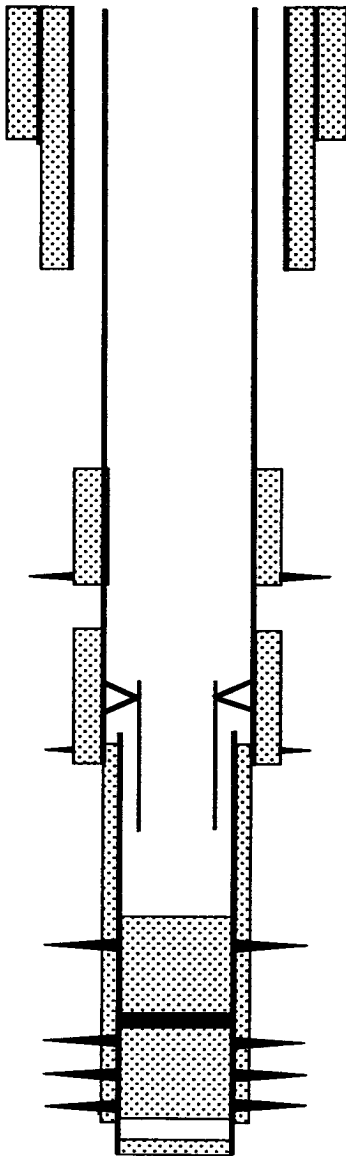
(This space for State use)

APPROVED BY [Signature] TITLE Field Rep ID DATE MAY 5 2003

Conditions of approval, if any:

DEVON ENERGY CORPORATION WELLBORE SCHEMATIC

WELL NAME: UNION MEAD FEE COM #1			FIELD: SOUTH CARLSBAD (MORROW)			
LOCATION: 1980' FNL & 660' FEL, SEC 8-T22S-R27E			COUNTY: EDDY			STATE: NM
ELEVATION: GL=3094' ; KB=3112'			SPUD DATE: 08/01/72		COMP DATE: 09/08/01	
API#: 30-015-20718		PREPARED BY: C.H. CARLETON			DATE: 04/24/03	
TUBULARS	DEPTH	SIZE	WEIGHT	GRADE	THREAD	HOLE SIZE
CASING:	0' - 316'	13 3/8"	48#			17 1/2"
CASING:	0' - 1875'	10 3/4"	40.5#,32.75#	K-55,H-40	ST&C	12 1/4"
CASING:	0' - 8884'	7 5/8"	29.7#	N-80	LT&C	9 1/2"
LINER:	8507' - 11685'	5 1/2"	20#	N-80	SF-JP	6 1/2"
TUBING:						



☒ CURRENT

☐ PROPOSED

OPERATOR: DEVON ENERGY PRODUCTION COMPANY, L.P.

13 3/8" CASING @ 316' W/350 SXS. TOC @SURFACE.

10 3/4" CASING @ 1875' W/500 SXS. TOC @ SURFACE.

PERF AND SQZ @ 5170' W/50 SXS

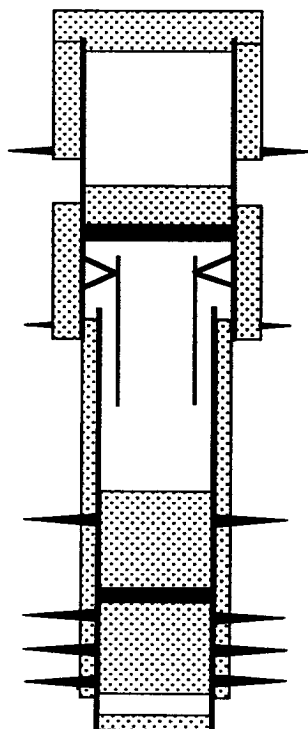
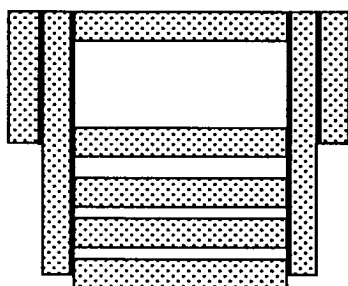
2 3/8" TUBING CUT OFF @ 7884' (FREEPOINT @ 7888')
CASING COLLAPSED @ +/-7888'

PERF AND SQZ @ 8588'
7 5/8" CASING @ 8884' W/250 SXS. TOC @ 7600' (CBL)
EOT @ 9085'

STRAWN PERFORATIONS: 10292'- 10317'(OA)
RETAINER CAPPED WITH 140 SXS CEMENT. TOC @ 9756'(CALC)
CEMENT RETAINER @ 11130', 110 SXS PUMPED BELOW RETAINER
MORROW PERFORATIONS: 11163'- 11581'(OA) - 152 HOLES
PERF & SQZ @ 11564' W/275 SXS. TOC @ 8588'
5 1/2" LINER @ 8507'- 11656'
TD @ 11656' PBTD @ 11648'

DEVON ENERGY CORPORATION WELLBORE SCHEMATIC

WELL NAME: UNION MEAD FEE COM #1				FIELD: SOUTH CARLSBAD (MORROW)		
LOCATION: 1980' FNL & 660' FEL, SEC 8-T22S-R27E				COUNTY: EDDY		STATE: NM
ELEVATION: GL=3094' ; KB=3112'				SPUD DATE: 08/01/72		COMP DATE: 09/08/01
API#: 30-015-20718		PREPARED BY: C.H. CARLETON			DATE: 04/25/03	
TUBULARS	DEPTH	SIZE	WEIGHT	GRADE	THREAD	HOLE SIZE
CASING:	0' - 316'	13 3/8"	48#			17 1/2"
CASING:	0' - 1875'	10 3/4"	40.5#,32.75#	K-55,H-40	ST&C	12 1/4"
CASING:	+/-5100' - 8884'	7 5/8"	29.7#	N-80	LT&C	9 1/2"
LINER:	8507' - 11685'	5 1/2"	20#	N-80	SF-JP	6 1/2"
TUBING:						



☐ CURRENT

☒ PROPOSED

OPERATOR: DEVON ENERGY PRODUCTION COMPANY, L.P.

CEMENT PLUG: 0'- 60'

CEMENT PLUG: 265'- 365'

13 3/8" CASING @ 316' W/350 SXS. TOC @SURFACE.

CEMENT PLUG: 980'- 1080'

CEMENT PLUG: 1380'- 1480'

CEMENT PLUG: 1825'- 1925'

10 3/4" CASING @ 1875' W/500 SXS. TOC @ SURFACE.

CEMENT PLUG: 3500'- 3600'

CEMENT PLUG: 50' ABOVE AND 50' BELOW CASING STUB.

CUT OFF 7 5/8" CASING @ FREEPOINT

PERF AND SQZ @ 5170' W/50 SXS

CIBP @ 7850', CAP WITH 25 SXS CEMENT

2 3/8" TUBING CUT OFF @ 7884' (FREEPOINT @ 7888')

CASING COLLAPSED @ +/-7888'

PERF AND SQZ @ 8588'

7 5/8" CASING @ 8884' W/250 SXS. TOC @ 7600' (CBL)

EOT @ 9085'

STRAWN PERFORATIONS: 10292'- 10317'(OA)

RETAINER CAPPED WITH 140 SXS CEMENT. TOC @ 9756'(CALC)

CEMENT RETAINER @ 11130', 110 SXS PUMPED BELOW RETAINER

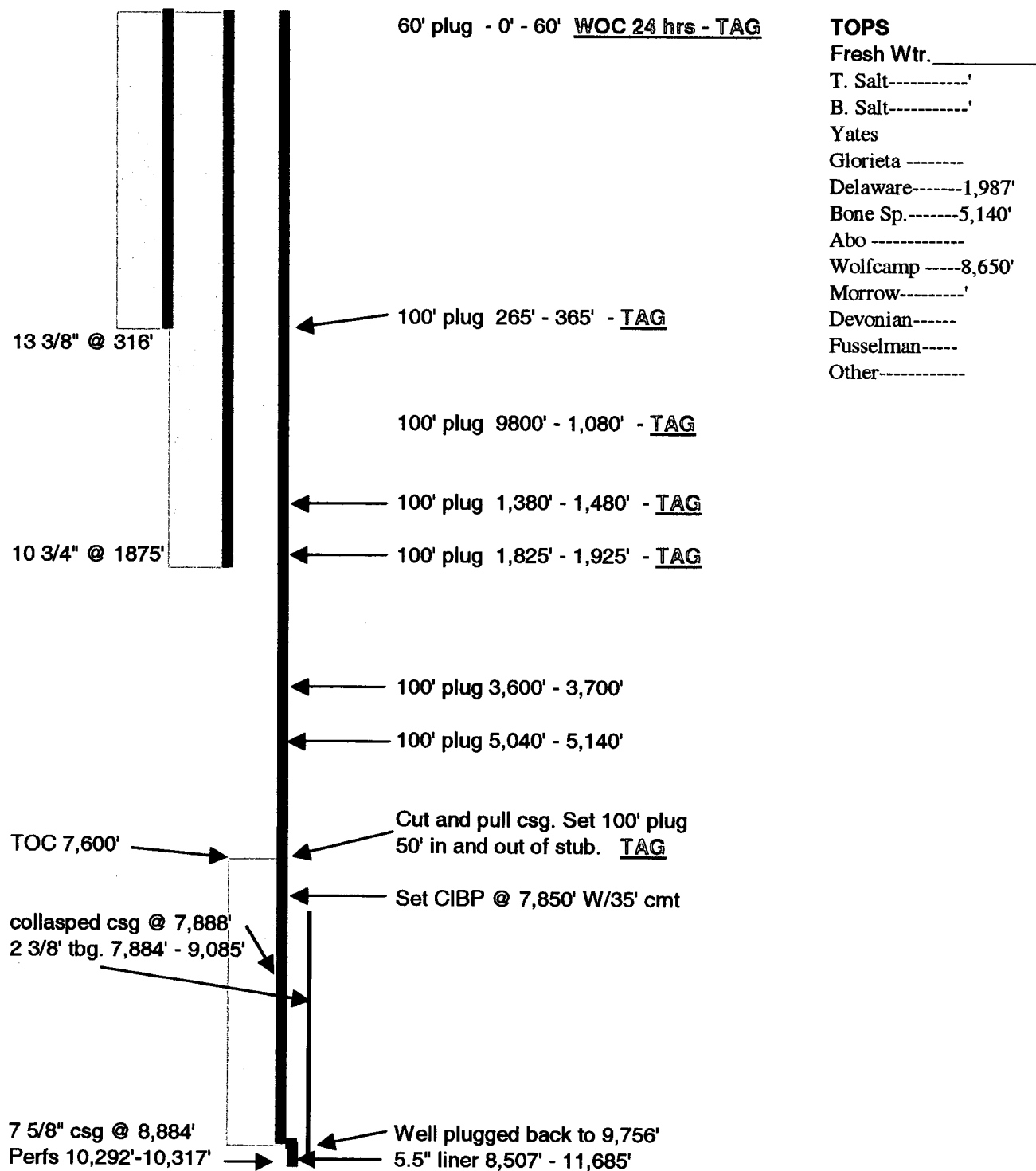
MORROW PERFORATIONS: 11163'- 11581'(OA) - 152 HOLES

PERF & SQZ @ 11564' W/275 SXS. TOC @ 8588'

5 1/2" LINER @ 8507'- 11656'

TD @ 11656' PBTD @ 11648'

OPERATOR: Devon Energy Corpurces, Inc.		API# 30-015-20718		
WELL: Union Mead Fee Com # 1		LOCATION: H-8-22-27		
SURFACE CSG- HOLE SIZE "	CSG. SIZE 13 3/8"	SET @ 316'	SX. CMT.	TOC. Circ
INT.CSG- HOLE SIZE	CSG. SIZE 10 3/4"	SET @ 1875'	SX. CMT.	TOC. Circ.
LONG STRING- HOLE SIZE "	CSG. SIZE 7 5/8"	SET @ 8884'	SX. CMT.	TOC. 7600'
OTHER-				





NEW MEXICO ENERGY, MINERALS and NATURAL RESOURCES DEPARTMENT

BILL RICHARDSON

Governor

Joanna Prukop

Cabinet Secretary

Lori Wrotenbery

Director

Oil Conservation Division

GEOLOGICAL TOPS

Devon Energy Production Company

Union Mead Fee Com. #1

Unit H, Sec. 8, T-22-S R-27-E

1980 'FNL & 660' FEL (G.L.- 3094'; K.B.-3112')

Eddy, N.M.

30-015-20718

Geological Tops per/Bryan G. Arrant-OCD

Reef	@ Surface
Delaware Sands	1987'
Bone Spring	5140'
1st Bone Spring Sand	6300'
2nd Bone Spring Sand	6995'
3rd Bone Spring Sand	8376'
Wolfcamp	8650'
Pennsylvanian	9840'
Strawn	10020'
Atoka	10430'
Morrow Clastics	11123'