

District I
1625 N. French Dr., Hobbs, NM 88240
District II
1301 W. Grand Avenue, Artesia, NM 88210
District III
1000 Rio Brazos Road, Aztec, NM 87410
District IV
1220 S. St. Francis Dr., Santa Fe, NM 87505

State of New Mexico
Energy Minerals and Natural Resources

Form C-101
March 4, 2004

Oil Conservation Division
1220 South St. Francis Dr.
Santa Fe, NM 87505

RECEIVED
Submit to appropriate District Office
State Lease - 6 Copies
Fee Lease - 5 Copies

AUG 13 2004

OCD-ARTESIA

☐ AMENDED REPORT

APPLICATION FOR PERMIT TO DRILL, RE-ENTER, DEEPEN, PLUGBACK, OR ADD A ZONE

1 Operator Name and Address PURE RESOURCES, L.P. 500 WEST ILLINOIS MIDLAND, TEXAS 79701		2 OGRID Number 150628
3 Property Code 4876		4 API Number 30 - 015-33762
5 Property Name CATCLAW DRAW UNIT		6 Well No. 21

7 Surface Location

UL or lot no. D	Section 14	Township 21S	Range 25E	Lot Idn	Feet from the 660'	North/South line NORTH	Feet from the 1650'	East/West line WEST	County EDDY CO.
--------------------	---------------	-----------------	--------------	---------	-----------------------	---------------------------	------------------------	------------------------	--------------------

8 Proposed Bottom Hole Location If Different From Surface

UL or lot no.	Section	Township	Range	Lot Idn	Feet from the	North/South line	Feet from the	East/West line	County
---------------	---------	----------	-------	---------	---------------	------------------	---------------	----------------	--------

9 Proposed Pool 1
CATCLAW DRAW-MORROW (PRORATED GAS 74320)

10 Proposed Pool 2

14 Drilling Pit Location and Other Information

UL or lot no. D	Section 36	Township 21S	Range 25E	Lot Idn	Feet from the 660'	North/South line NORTH	Feet from the 1650'	East/West line WEST	County EDDY CO.
Depth to ground water 25'				Distance from nearest fresh water well 1500'		Distance from nearest surface water 7 miles Pecos River			
11 Work Type Code N		12 Well Type Code G		13 Cable/Rotary ROTARY		14 Lease Type Code S		15 Ground Level Elevation 3295'	
16 Multiple NO		17 Proposed Depth 10,600'		18 Formation MORROW		19 Contractor UNKNOWN		20 Spud Date WHEN APPROVED	

21 Proposed Casing and Cement Program

Hole Size	Casing Size	Casing weight/foot	Setting Depth	Sacks of Cement	Estimated TOC
25"	20"	NA	40'	Redi-mix	Surface
17 1/2"	13 3/8"	48	350'	350 Sx.	"
12 1/4"	9 5/8"	36	1750'	750 Sx.	Surface
7 7/8"	5 1/2"	17	10,600'	2000 Sx.	"

22 Describe the proposed program. If this application is to DEEPEN or PLUG BACK, give the data on the present productive zone and proposed new productive zone. Describe the blowout prevention program, if any. Use additional sheets if necessary.

SEE ATTACHED SHEET

23 I hereby certify that the information given above is true and complete to the best of my knowledge and belief. I further certify that the drilling pit will be constructed according to NMOCD guidelines ☒, a general permit ☐, or an (attached) alternative OCD-approved plan ☐.

Signature: Joe T. Janica

Printed name: Joe T. Janica

Title: Agent

E-mail Address:

Date: 08/12/04

Phone: 505-391-8503

OIL CONSERVATION DIVISION

Approved by:

TIM W. GUM
DISTRICT II SUPERVISOR

Title:

Approval Date: DEC 13 2004

Expiration Date: DEC 13 2005

Conditions of Approval:

Attached ☐

NOTIFY OCD OF SPUD & TIME TO
WITNESS CEMENTING OF
SURFACE & INTERMEDIATE
CASING

PURE RESOURCES, L.P.
CATCLAW DRAW MORROW UNIT # 21
660' FNL & 1650' FWL
SECTION 14 T21S-R25E
EDDY CO. NM

1. Drill 25" hole to 40'. Set 40' of 20" conductor pipe and cement to surface with Redi-mix.
2. Drill 17½" hole to 350'. Run and set 350' of 13 3/8" 48# H-40 ST&C casing. Cement with 350 Sx. of Class "C" cement + 2% CaCl, + ¼# Flocele/Sx. circulate cement to surface.
3. Drill 12¼" hole to 1750'. Run and set 1750' of 9 5/8" 36# J-55 ST&C casing. Cement with 700 Sx. of Class "C" cement + additives, circulate cement to surface.
4. Drill 7 7/8" hole to 10,600'. Run and set 10,600' of 5½" N-80 17# LT&C casing. Cement with 1500 Sx. of Class "H" POZ + additives, tail in with 500 Sx. of Class "H" Premium POZ cement + additives estimate top of cement 2300' from surface.

DISTRICT I
1625 N. FRENCH DR., HOBBS, NM 88240

DISTRICT II
1301 W. GRAND AVENUE, ARTESIA, NM 88210

DISTRICT III
1000 Rio Brazos Rd., Aztec, NM 87410

DISTRICT IV
1220 S. ST. FRANCIS DR., SANTA FE, NM 87505

State of New Mexico
Energy, Minerals and Natural Resources Department

OIL CONSERVATION DIVISION
1220 SOUTH ST. FRANCIS DR.
Santa Fe, New Mexico 87505

Form C-102
Revised JUNE 10, 2003
Submit to Appropriate District Office
State Lease - 4 Copies
Fee Lease - 3 Copies

WELL LOCATION AND ACREAGE DEDICATION PLAT

☐ AMENDED REPORT

API Number	Pool Code 74320	Pool Name CATCLAW DRAW-MORROW (PRORATED GAS)
Property Code 4876	Property Name CATCLAW DRAW UNIT	Well Number 21
OGRID No. 150628	Operator Name PURE RESOURCES, L.P.	Elevation 3295'

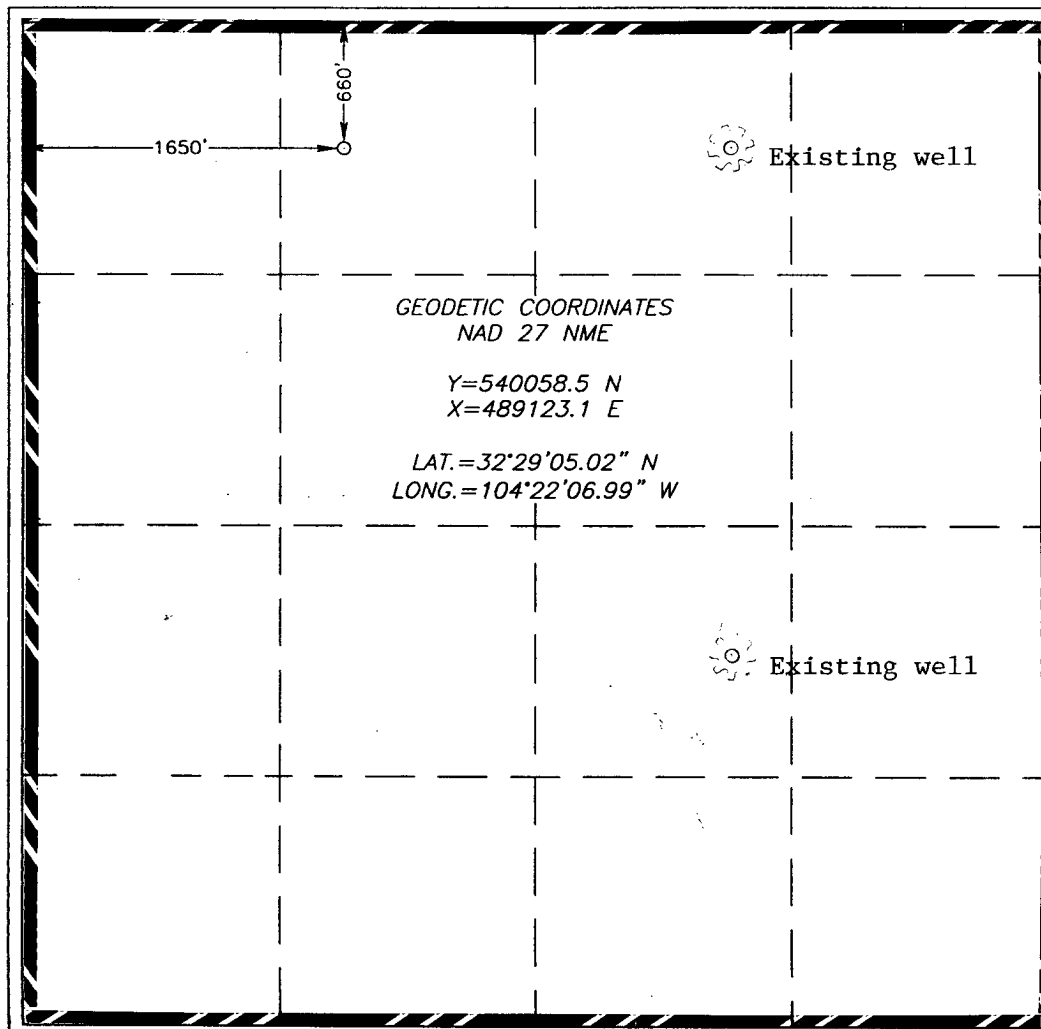
Surface Location

UL or lot No. D	Section 14	Township 21-S	Range 25-E	Lot Idn	Feet from the 660'	North/South line NORTH	Feet from the 1650'	East/West line WEST	County EDDY
--------------------	---------------	------------------	---------------	---------	-----------------------	---------------------------	------------------------	------------------------	----------------

Bottom Hole Location If Different From Surface

UL or lot No.	Section	Township	Range	Lot Idn	Feet from the	North/South line	Feet from the	East/West line	County
Dedicated Acres 640	Joint or Infill	Consolidation Code	Order No.						

NO ALLOWABLE WILL BE ASSIGNED TO THIS COMPLETION UNTIL ALL INTERESTS HAVE BEEN CONSOLIDATED
OR A NON-STANDARD UNIT HAS BEEN APPROVED BY THE DIVISION



OPERATOR CERTIFICATION

I hereby certify the the information
contained herein is true and complete to the
best of my knowledge and belief.

Joe T Janica
Signature
Joe T. Janica
Printed Name
Agent
Title
08/12/04
Date

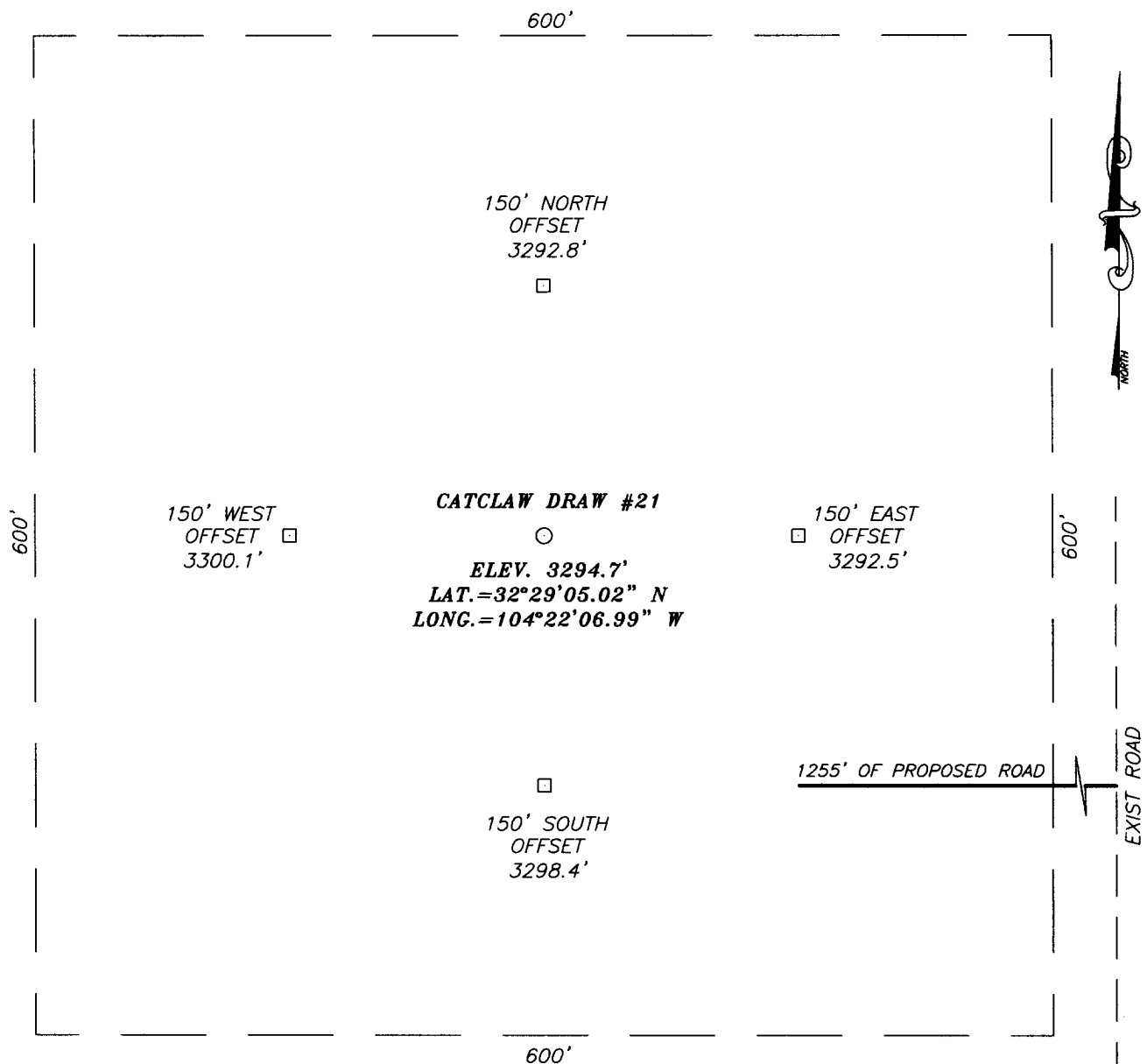
SURVEYOR CERTIFICATION

I hereby certify that the well location shown
on this plat was plotted from field notes of
actual surveys made by me or under my
supervision, and that the same is true and
correct to the best of my belief.

JUNE 11, 2004

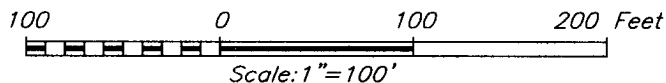
Date Surveyed
Signature & Seal of
Professional Surveyor
GARY EIDSON
6/16/04
04.11/0698
Certificate No. GARY EIDSON 12641

SECTION 14, TOWNSHIP 21 SOUTH, RANGE 25 EAST, N.M.P.M.,
 EDDY COUNTY, NEW MEXICO



DIRECTIONS TO LOCATION

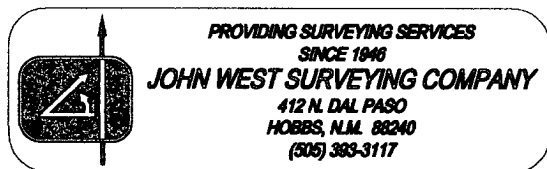
FROM THE INTERSECTION OF U.S. HWY #285 AND CO. RD. #407 (DOUGLAS FIR) GO SOUTHWEST ON CO. RD. #407 FOR APPROX. 2 MILES TO A TRAIL ROAD. TURN RIGHT (NORTH) AND GO 0.6 MILES TO PROPOSED ROAD SURVEY. THIS LOCATION IS APPROX. 1255' WEST.



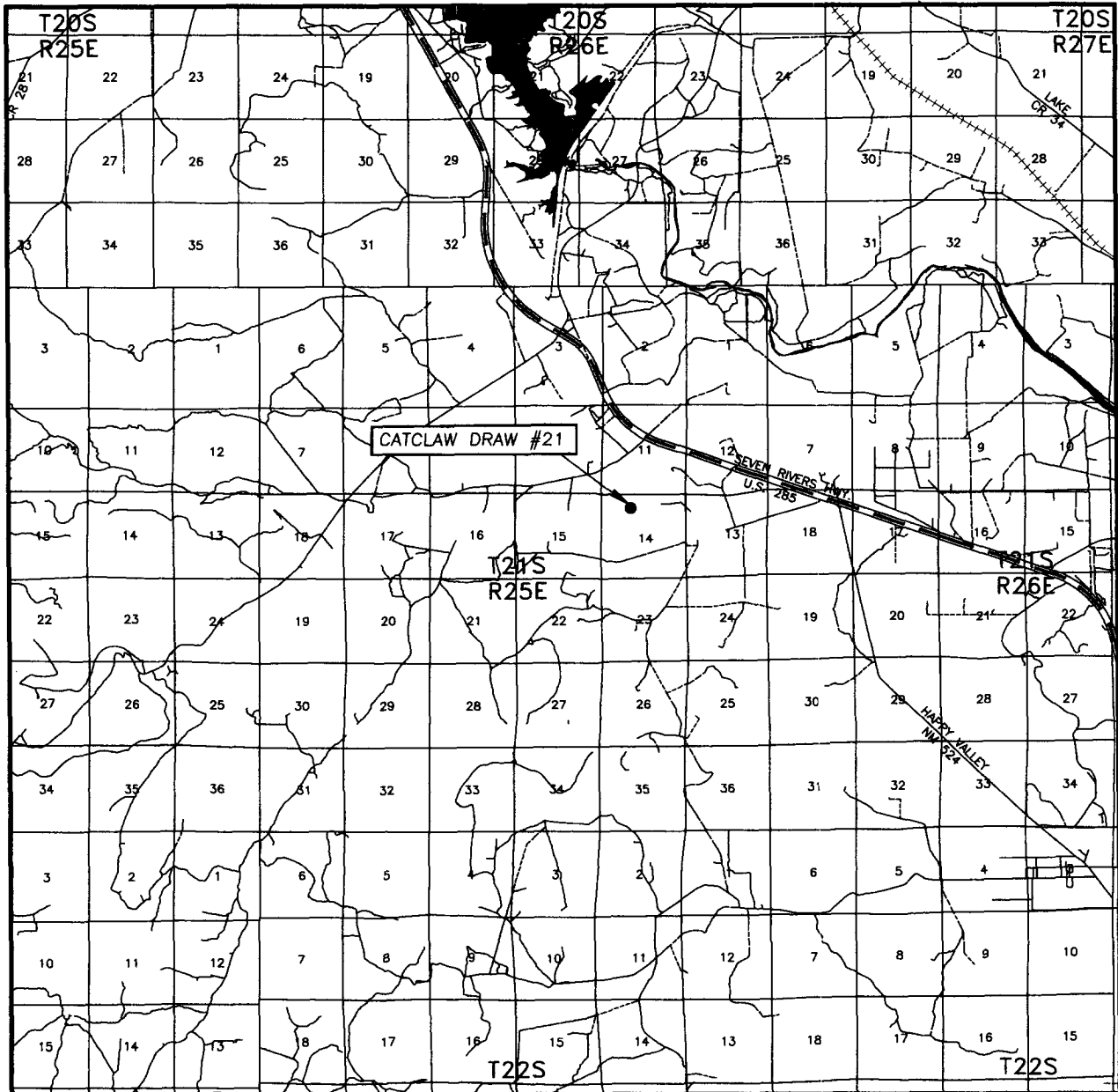
PURE RESOURCES, L.P.

CATCLAW DRAW #21 WELL
 LOCATED 660 FEET FROM THE NORTH LINE
 AND 1650 FEET FROM THE WEST LINE OF SECTION 14,
 TOWNSHIP 21 SOUTH, RANGE 25 EAST, N.M.P.M.,
 EDDY COUNTY, NEW MEXICO.

Survey Date: 06/11/04	Sheet 1 of 1 Sheets
W.O. Number: 04.11.0698	Dr By: J. RIVERO
Date: 06/14/04	Disk: CD#10
04110698	Scale: 1"=100'



VICINITY MAP



SCALE: 1" = 2 MILES

SEC. 14 TWP. 21-S RGE. 25-E

SURVEY N.M.P.M.

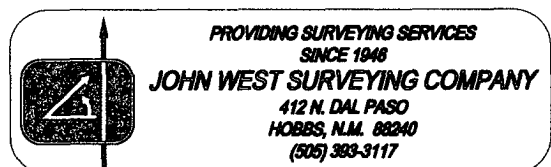
COUNTY EDDY

DESCRIPTION 660' FNL & 1650' FWL

ELEVATION 3295'

OPERATOR PURE RESOURCES, L.P.

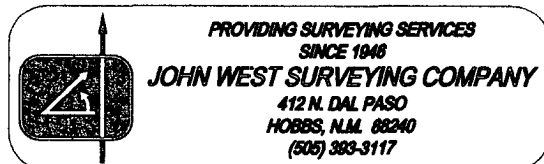
LEASE CATCLAW DRAW FEDERAL

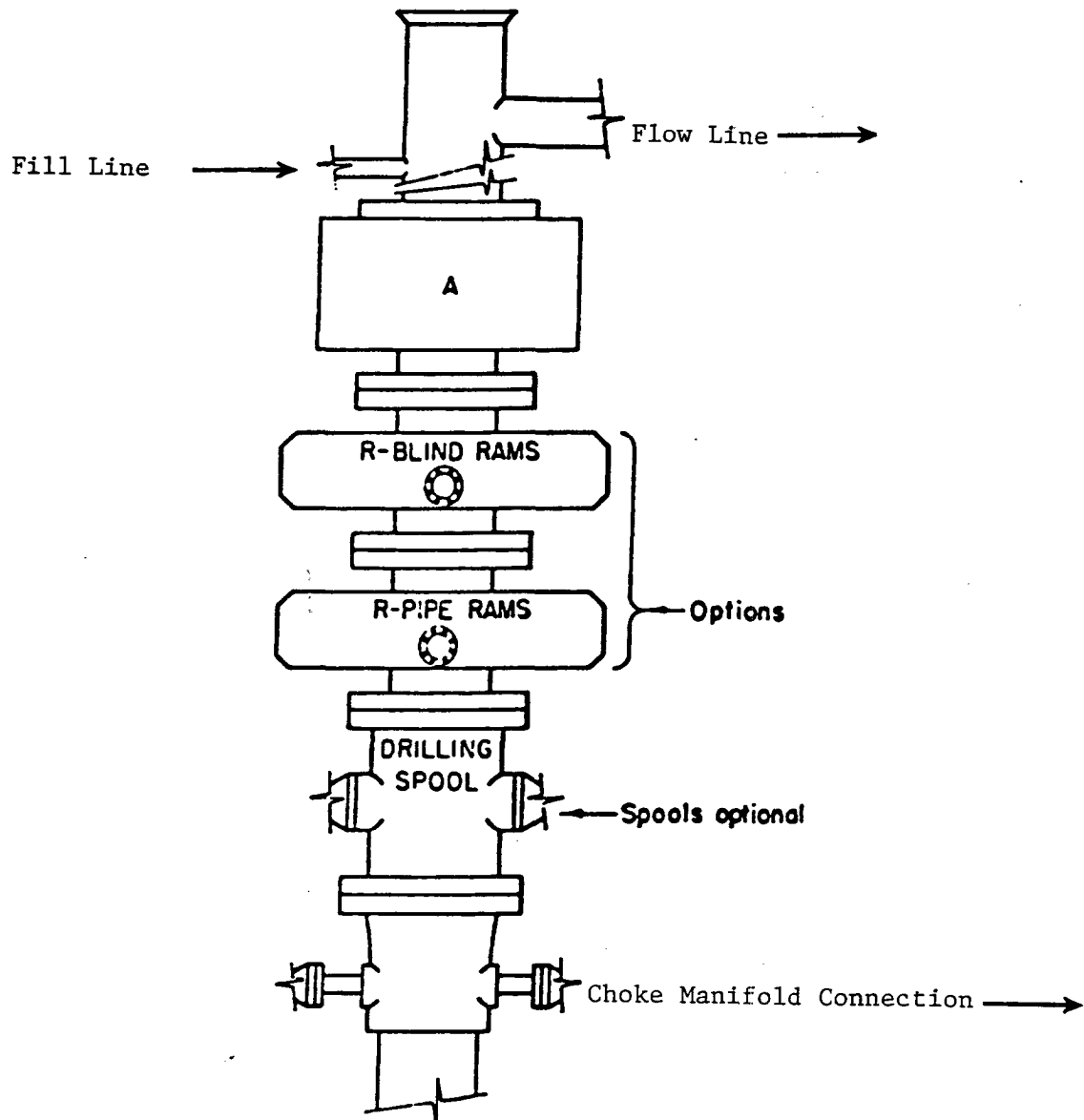




CONTOUR INTERVAL:
CARLSBAD WEST, N.M. - 20'

U.S.G.S. TOPOGRAPHIC MAP
CARLSBAD WEST, N.M.





ARRANGEMENT SRRA

1500 Series
5000 PSI WP

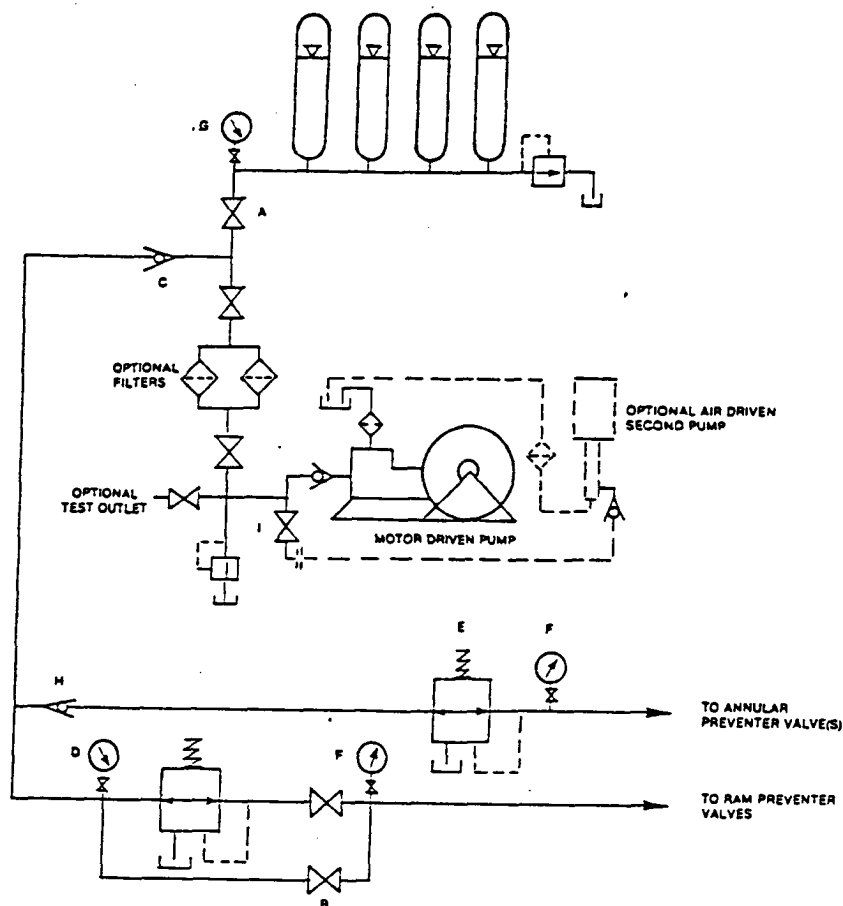


FIGURE K6-1. The schematic sketch of an accumulator system shows required and optional components.

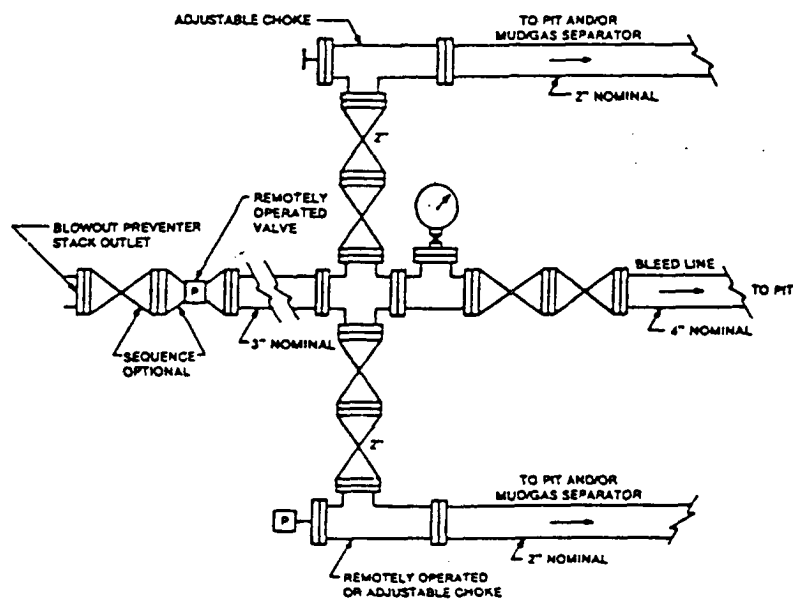


FIGURE K4-2. Typical choke manifold assembly for 5M rated working pressure service — surface installation.

HYDROGEN SULFIDE DRILLING OPERATIONS PLAN

APPLICABILITY:

The provisions of this plan are effective when drilling operations are conducted in areas where zones may be penetrated that are known to contain, or may be reasonably expected to contain, hydrogen sulfide gas in concentrations of 100 parts per million or more.

TRAINING REQUIREMENTS:

A. When conducting drilling operations in an area where hydrogen sulfide gas might be encountered, all personnel at the well site will have had proper training in the following areas:

1. The hazards and characteristics of hydrogen sulfide gas (H₂S).
2. Toxicity of hydrogen sulfide and sulfur dioxide.
3. Hydrogen sulfide gas detectors, warning systems, evacuation procedures, and proper use and maintenance of personal protective equipment.
4. Proper rescue procedures, first aid, and artificial respiration.

B. In addition, supervisory personnel will be trained in the following areas:

1. The effects of hydrogen sulfide on metal components. If high tensile tubulars are to be used, personnel will be trained in their special maintenance requirements.
2. Corrective action and shut-in procedures when drilling or reworking a well, and blowout prevention and well control procedures.
3. The contents and requirements of the Hydrogen Sulfide Drilling Operations Plan and the Public Protection Plan.

There will be an initial training session just prior to encountering a known or probable hydrogen sulfide zone (within 3 days or 500 feet) and weekly hydrogen sulfide and well control drills for all personnel in each crew. The initial training session will include a review of the site specific Hydrogen Sulfide Drilling Operations Plan and the Public Protection Plan. This plan will be available at the well site. All personnel will be required to carry documentation that they have received the proper training.

A. Attached is a detailed well site diagram showing:

- Drilling rig orientation
- Prevailing wind direction (Southwest)
- Location of briefing areas
- Location of Caution/Danger Signs
- Location of hydrogen sulfide monitors
- Location of wind direction Indicators

HYDROGEN SULFIDE SAFETY EQUIPMENT:

- A. All safety equipment and systems will be installed, tested and deemed operational when drilling reaches a depth of 500 feet above, or three days prior to penetrating the first zone reasonably expected to contain hydrogen sulfide.
- B. During drilling operations, a flare line will be routed from the BOP manifold to the reserve pit. Should suspected sour gas be vented through the flare line, a flare pistol will be used to ignite the flare.
- C. Protective equipment for essential personnel will be installed and maintained as follows:
1. 30-minute air packs will be maintained on the rig floor and near the briefing area.
 2. 30-minute work units will be maintained at the H2S trailer and/or on the rig floor.
 3. 30-minute escape units will be maintained on the rig floor.
 4. 300 cu. ft. air cylinders will be maintained in the H2S trailer.
 5. Associated breathing air equipment will also be installed and maintained.
 6. Hydrogen sulfide monitor will be located in the doghouse on the rig floor with sensors placed on the rig floor, at the bell nipple, the shale shaker, and in the pit area.
 7. An audible/visual alarm will be located near the doghouse on the rig floor.

VISUAL WARNING SYSTEMS:

- A. High visibility Caution/Danger signs will be posted on roads providing direct access to the well location.
- B. Green, yellow, and red condition flags to be displayed to denote Normal Conditions, Potential Danger, and Danger, H2S Present.
- C. Wind socks to be located at the protection center and in the pit area to continuously indicate wind direction.

CIRCULATING MEDIUM:

- A. Drilling fluid to be conditioned to minimize the volume of H2S circulated to the surface.

SPECIAL WELL CONTROL EQUIPMENT:

- A. In addition to the normal BOP stack and choke manifold, a drilling head will be used to help control and H2S contaminated drilling.

WELL TESTING:

- A. Drill stem testing of zones known, or reasonably expected, to contain hydrogen sulfide in concentrations of 100 pps or more will use the closed chamber method of testing.

COMMUNICATION:

- A. Radio communication will be available at the drilling rig and also in company vehicles.

ADDITIONAL INFORMATION:

- A. Additional information concerning Emergency Reaction Steps, Ignition Procedures, Training Requirements, and Emergency Equipment Requirements will be available on location at the well site.

PURE RESOURCES, L.P.
CATCLAW DRAW UNIT # 21
UNIT "D" SECTION 14
T21S-R25E EDDY CO. NM

RECEIVED
AUG 19 2004
OCD-ARTESIA

PROPOSED MUD CIRCULATING SYSTEM:

DEPTH	MUD WT.	VISC.	FLUID LOSS	TYPE MUD SYSTEM
40-400'	8.4-8.8	27-40	NC	Fresh water use paper to control seepage.
400-1750'	8.4-8.8	28-32	NC	Fresh water use paper to control seepage and high viscosity sweeps to clean hole.
1750-10,600'	8.4-9.0	28-38	NC*	Same as above see below

* Water loss will be lowered to 6-8 cc from approximately 9600'± in order to protect the producing formation, run open hole logs, DST's if run and to run casing.

Sufficient mud materials will be kept on location at all times in order to combat lost circulation, or unexpected kicks. In order to run DST's, open hole logs, and casing, viscosity, and water loss may have to be adjusted to meet these needs.

PURE RESOURCES, L.P.
CATCLAW DRAW UNIT # 21
UNIT "D" SECTION 14
T21S-R25E EDDY CO. NM

RECEIVED
AUG 19 2004
OCD-ARTESIA

PROPOSED MUD CIRCULATING SYSTEM:

DEPTH	MUD WT.	VISC.	FLUID LOSS	TYPE MUD SYSTEM
40-400'	8.4-8.8	27-40	NC	Fresh water use paper to control seepage.
400-1750'	8.4-8.8	28-32	NC	Fresh water use paper to control seepage and high viscosity sweeps to clean hole.
1750-10,600'	8.4-9.0	28-38	NC*	Same as above see below

* Water loss will be lowered to 6-8 cc from approximately 9600'± in order to protect the producing formation, run open hole logs, DST's if run and to run casing.

Sufficient mud materials will be kept on location at all times in order to combat lost circulation, or unexpected kicks. In order to run DST's, open hole logs, and casing, viscosity, and water loss may have to be adjusted to meet these needs.

PURE RESOURCES, L.P.
CATCLAW DRAW UNIT # 21
UNIT "D" SECTION 14
T21S-R25E EDDY CO. NM

RECEIVED

AUG 19 2004

ODD-ARTESIA

PROPOSED MUD CIRCULATING SYSTEM:

DEPTH	MUD WT.	VISC.	FLUID LOSS	TYPE MUD SYSTEM
40-400'	8.4-8.8	27-40	NC	Fresh water use paper to control seepage.
400-1750'	8.4-8.8	28-32	NC	Fresh water use paper to control seepage and high viscosity sweeps to clean hole.
1750-10,600'	8.4-9.0	28-38	NC*	Same as above see below

* Water loss will be lowered to 6-8 cc from approximately 9600'± in order to protect the producing formation, run open hole logs, DST's if run and to run casing.

Sufficient mud materials will be kept on location at all times in order to combat lost circulation, or unexpected kicks. In order to run DST's, open hole logs, and casing, viscosity, and water loss may have to be adjusted to meet these needs.

PURE RESOURCES, L.P.
CATCLAW DRAW UNIT # 21
UNIT "D" SECTION 14
T21S-R25E EDDY CO. NM

RECEIVED

AUG 19 2004

~~OOD-ARTESIA~~

PROPOSED MUD CIRCULATING SYSTEM:

DEPTH	MUD WT.	VISC.	FLUID LOSS	TYPE MUD SYSTEM
40-400'	8.4-8.8	27-40	NC	Fresh water use paper to control seepage.
400-1750'	8.4-8.8	28-32	NC	Fresh water use paper to control seepage and high viscosity sweeps to clean hole.
1750-10,600'	8.4-9.0	28-38	NC*	Same as above see below

* Water loss will be lowered to 6-8 cc from approximately 9600'± in order to protect the producing formation, run open hole logs, DST's if run and to run casing.

Sufficient mud materials will be kept on location at all times in order to combat lost circulation, or unexpected kicks. In order to run DST's, open hole logs, and casing, viscosity, and water loss may have to be adjusted to meet these needs.

PURE RESOURCES, L.P.
CATCLAW DRAW UNIT # 21
UNIT "D" SECTION 14
T21S-R25E EDDY CO. NM

RECEIVED

AUG 19 2004

OOD-ARTESIA

PROPOSED MUD CIRCULATING SYSTEM:

<u>DEPTH</u>	<u>MUD WT.</u>	<u>VISC.</u>	<u>FLUID LOSS</u>	<u>TYPE MUD SYSTEM</u>
40-400'	8.4-8.8	27-40	NC	Fresh water use paper to control seepage.
400-1750'	8.4-8.8	28-32	NC	Fresh water use paper to control seepage and high viscosity sweeps to clean hole.
1750-10,600'	8.4-9.0	28-38	NC*	Same as above see below

* Water loss will be lowered to 6-8 cc from approximately 9600'± in order to protect the producing formation, run open hole logs, DST's if run and to run casing.

Sufficient mud materials will be kept on location at all times in order to combat lost circulation, or unexpected kicks. In order to run DST's, open hole logs, and casing, viscosity, and water loss may have to be adjusted to meet these needs.

HYDROGEN SULFIDE DRILLING OPERATIONS PLAN

RECEIVED

OCT 21 2004

OOD-ARTESIA

APPLICABILITY:

The provisions of this plan are effective when drilling operations are conducted in areas where zones may be penetrated that are known to contain, or may be reasonably expected to contain, hydrogen sulfide gas in concentrations of 100 parts per million or more.

TRAINING REQUIREMENTS:

A. When conducting drilling operations in an area where hydrogen sulfide gas might be encountered, all personnel at the well site will have had proper training in the following areas:

1. The hazards and characteristics of hydrogen sulfide gas (H₂S).
2. Toxicity of hydrogen sulfide and sulfur dioxide.
3. Hydrogen sulfide gas detectors, warning systems, evacuation procedures, and proper use and maintenance of personal protective equipment.
4. Proper rescue procedures, first aid, and artificial respiration.

B. In addition, supervisory personnel will be trained in the following areas:

1. The effects of hydrogen sulfide on metal components. If high tensile tubulars are to be used, personnel will be trained in their special maintenance requirements.
2. Corrective action and shut-in procedures when drilling or reworking a well, and blowout prevention and well control procedures.
3. The contents and requirements of the Hydrogen Sulfide Drilling Operations Plan and the Public Protection Plan.

There will be an initial training session just prior to encountering a known or probable hydrogen sulfide zone (within 3 days or 500 feet) and weekly hydrogen sulfide and well control drills for all personnel in each crew. The initial training session will include a review of the site specific Hydrogen Sulfide Drilling Operations Plan and the Public Protection Plan. This plan will be available at the well site. All personnel will be required to carry documentation that they have received the proper training.

A. Attached is a detailed well site diagram showing:

- Drilling rig orientation
- Prevailing wind direction (Southwest)
- Location of briefing areas
- Location of Caution/Danger Signs
- Location of hydrogen sulfide monitors
- Location of wind direction Indicators

HYDROGEN SULFIDE SAFETY EQUIPMENT:

- A. All safety equipment and systems will be installed, tested and deemed operational when drilling reaches a depth of 500 feet above, or three days prior to penetrating the first zone reasonably expected to contain hydrogen sulfide.
- B. During drilling operations, a flare line will be routed from the BOP manifold to the reserve pit. Should suspected sour gas be vented through the flare line, a flare pistol will be used to ignite the flare.
- C. Protective equipment for essential personnel will be installed and maintained as follows:
1. 30-minute air packs will be maintained on the rig floor and near the briefing area.
 2. 30-minute work units will be maintained at the H2S trailer and/or on the rig floor.
 3. 30-minute escape units will be maintained on the rig floor.
 4. 300 cu. ft. air cylinders will be maintained in the H2S trailer.
 5. Associated breathing air equipment will also be installed and maintained.
 6. Hydrogen sulfide monitor will be located in the doghouse on the rig floor with sensors placed on the rig floor, at the bell nipple, the shale shaker, and in the pit area.
 7. An audible/visual alarm will be located near the doghouse on the rig floor.

VISUAL WARNING SYSTEMS:

- A. High visibility Caution/Danger signs will be posted on roads providing direct access to the well location.
- B. Green, yellow, and red condition flags to be displayed to denote Normal Conditions, Potential Danger, and Danger, H2S Present.
- C. Wind socks to be located at the protection center and in the pit area to continuously indicate wind direction.

CIRCULATING MEDIUM:

- A. Drilling fluid to be conditioned to minimize the volume of H2S circulated to the surface.

SPECIAL WELL CONTROL EQUIPMENT:

- A. In addition to the normal BOP stack and choke manifold, a drilling head will be used to help control and H2S contaminated drilling.

WELL TESTING:

- A. Drill stem testing of zones known, or reasonably expected, to contain hydrogen sulfide in concentrations of 100 pps or more will use the closed chamber method of testing.

COMMUNICATION:

- A. Radio communication will be available at the drilling rig and also in company vehicles.

ADDITIONAL INFORMATION:

- A. Additional information concerning Emergency Reaction Steps, Ignition Procedures, Training Requirements, and Emergency Equipment Requirements will be available on location at the well site.

If at this time the supervising person determines the release of H2S cannot be contained to the site location and the general public is in harms way he will take the necessary steps to protect the workers and the public.

EMERGENCY CALL LIST: (Start and continue until ONE of these people have been contacted)

	<u>OFFICE</u>	<u>MOBILE</u>	<u>HOME</u>
POGO Producing Co.	432 685 8100		
Richard Wright	432 685 8140	432 556 7595	432 699 7108
Barrett Smith	432 685 8141	432 425 0149	432 520 7337
Rex Jasper	432 685 8143	432 631 0127	432 694 1839
Donny Davis	pgr 432 563 6944	432 556 5927	432 570 9555
Jerry Cooper	432 685 8101		432 697 4629

EMERGENCY RESPONSE NUMBERS:

State Police:	Eddy County		505 748 9718
State Police:	Lea County		505 392 5588
Sheriff	Eddy County		505 746 2701
Sheriff	Lea County		
Emergency Medical Ser (Ambulance)	Eddy County		911 or 505 746 2701
	Lea County	Eunice	911 or 505 394 3258
Emergency Response	Eddy County SERC		505 476 9620
	Lea County		
Artesia Police Dept			505 746 5001

Artesia Fire Dept		505 746 5001
Carlsbad Police Dept		505 885 2111
Carlsbad Fire Dept		505 885 3125
Loco Hills Police Dept		505 677 2349
Jal Police Dept		505 395 2501
Jal Fire Dept		505 395 2221
Jal ambulance		505 395 2221
Eunice Police Dept		505 394 0112
Eunice Fire Dept		505 394 3258
Eunice Ambulance		505 394 3258
Hobbs Police Dept		
NMOCD	District 1 (Lea, Roosevelt, Curry)	505 393 6161
	District 2 (Eddy Chavez)	505 748 1283
Lea County Information		505 393 8203
Callaway Safety	Lea/Eddy County	505 392 2973
BJ Services	Artesia	505 746 3140
	Hobbs	505 392 5556
Halliburton	Artesia	1 800 523 2482
	Hobbs	1 800 523 2482
Wild Well Control	Midland	432 550 6202
	Mobile	432 553 1166