

District I
1625 N. French Dr., Hobbs, NM 88240
District II
811 S. 1st Street, Artesia, NM 88210
District III
1000 Rio Brazos Rd., Aztec, NM 87410
District IV
2040 South Pacheco, Santa Fe, NM 87505

State of New Mexico
Energy, Minerals & Natural Resources

Oil Conservation Division
2040 South Pacheco
Santa Fe, NM 87505

Form C-101
Revised March 17, 1999

Submit to appropriate District Office
State Lease - 6 Copies
Fee Lease - 5 Copies



☐ AMENDED REPORT

APPLICATION FOR PERMIT TO DRILL, RE-ENTER, DEEPEN, PLUG BACK, OR ADD A ZONE

¹ Operator Name and Address OXY USA WTP Limited Partnership P.O. Box 50250 Midland, TX 79710-0250		² OGRID Number 192463
⁴ Property Code 32221	⁵ Property Name OXY Honolulu State	³ API Number 30- 015- 32774
		⁶ Well No. 1

⁷ Surface Location

UL or lot no.	Section	Township	Range	Lot. Idn	Feet from the	North/South Line	Feet from the	East/West line	County
G	23	21S	27E		1980	north	1980	east	Eddy

⁸ Proposed Bottom Hole Location If Different From Surface

UL or lot no.	Section	Township	Range	Lot. Idn	Feet from the	North/South Line	Feet from the	East/West line	County

⁹ Proposed Pool 1

Undesignated Burton Flat Morrow

¹⁰ Proposed Pool 2

¹¹ Work Type Code N	¹² Well Type Code G	¹³ Cable/Rotary R	¹⁴ Lease Type Code S - V232	¹⁵ Ground Level Elevation 3201'
¹⁶ Multiple No	¹⁷ Proposed Depth 12200'	¹⁸ Formation Morrow	¹⁹ Contractor N/A	²⁰ Spud Date 6/15/03

²¹ Proposed Casing and Cement Program

Hole Size	Casing Size	Casing weight/foot	Setting Depth	Sacks of Cement	Estimated TOC
17-1/2"	13-3/8"	48#	500'	500sx	Surface
12-1/4"	9-5/8"	36#	2500'	1000sx	Surface
8-3/4"	5-1/2"	17#	12200'	1200sx	6000'

²² Describe the proposed program. If this application is to DEEPEN or PLUG BACK, give the data on the present production zone.
Describe the blowout prevention program, if any. Use additional sheets if necessary.

NOTIFY OCD SPUD & TIME
TO WITNESS 9 5/8" CASING

See Other Side

Fresh water mud only for surface & intermediate holes.

²³ I hereby certify that the information given above is true and complete to the best of my knowledge and belief.		OIL CONSERVATION DIVISION	
Signature: <i>David Stewart</i>		Approved by: <i>Sign. W. Green</i>	
Printed name: David Stewart		Title: <i>District Supervisor</i>	
Title: Sr. Regulatory Analyst		Approval Date: MAY 06 2003	Expiration Date: MAY 06 2004
Date: 5/21/03	Phone: 915-685-5717	Conditions of Approval: ...	
		Attached <input type="checkbox"/>	

OXY Honolulu State #1

1980 FNL 1980 FEL SWNE(G) SEC 23 T21S R27E Eddy County, NM

State Lease No. V-232

PROPOSED TD: 12200' TVD

BOP PROGRAM: 0-500' None

500-2500' 13-3/8" 3M annular preventer, to be used as
divertor only.

2500-12200' 11" 5M blind pipe rams with 5M annular
preventer and rotating head below 8500'.

CASING: Surface: 13-3/8" OD 48# H40 ST&C new casing set at 500'
17-1/2" hole

Intermediate: 9-5/8" OD 36# K55 ST&C new casing from 0-2500'
12-1/4" hole

Production: 5-1/2" OD 17# N80-HP110 LT&C new casing from 0-12200'
8-3/4" hole 9100'-N80 3100'-HP110

CEMENT: Surface - Circulate cement with 300sx 35:65 POZ/C with 6% Bentonite
+ 2% CaCl₂ + .25#/sx Cello-Seal followed by 200sx Cl C with 2% CaCl₂.

Intermediate - Circulate cement with 800sx 35:65 POZ/C with 6%
Bentonite + 2% CaCl₂ + .25#/sx Cello-Seal followed by 200sx Cl C
with 2% CaCl₂.

Production - Cement with 1000sx 15:61:11 POZ/C/CSE with .5% FL-52
+ .5% FL-25 + 8#/sx Gilsonite followed by 200sx Cl C with .7%
FL-25. Estimated top of cement is 6000'.

Note: Cement volumes may need to be adjusted to hole caliper.

MUD: 0-500' Fresh water/native mud. Lime for pH control
(9-10). Paper for seepage.
Wt 8.7-9.2 ppg, Vis 32-34 sec

500-2500' Fresh/*Brine water. Lime for pH control (10.0-
10.5). Paper for seepage.
Wt 8.3-9.0/10.0-10.1ppg, Vis 28-29 sec
*Fresh water will be used unless chlorides in
the mud system increases to 20000PPM.

2500-8900' Fresh water. Lime for pH control(9-9.5). Paper
for seepage.
Wt 8.3-8.5 ppg, Vis 28-29 sec

8900-10000' Cut brine. Lime for pH control (10-10.5).
Wt 9.6-10.0 ppg, Vis 28-29sec

10000-12200' Mud up with an Duo Vis/Flo Trol mud system.
Wt 9.6-10.0ppg, Vis 32-36sec, WL<10cc

DISTRICT I
P.O. Box 1980, Hobbs, NM 88241-1980

State of New Mexico

Energy, Minerals and Natural Resources Department

Form C-102

Revised February 10, 1994
Submit to Appropriate District Office
State Lease - 4 Copies
Fee Lease - 3 Copies

DISTRICT II
P.O. Drawer DD, Artesia, NM 88211-0719

OIL CONSERVATION DIVISION

P.O. Box 2088

Santa Fe, New Mexico 87504-2088

DISTRICT III
1000 Rio Brazos Rd., Aztec, NM 87410

DISTRICT IV
P.O. BOX 2088, SANTA FE, N.M. 87504-2088

WELL LOCATION AND ACREAGE DEDICATION PLAT

☐ AMENDED REPORT

API Number 30-015-	Pool Code 73280	Pool Name Undesignated Burton Flat Morrow
Property Code	Property Name OXY HONOLULU STATE	Well Number 1
OGRID No. 192463	Operator Name OXY U.S.A. WTP, LP	Elevation 3201'

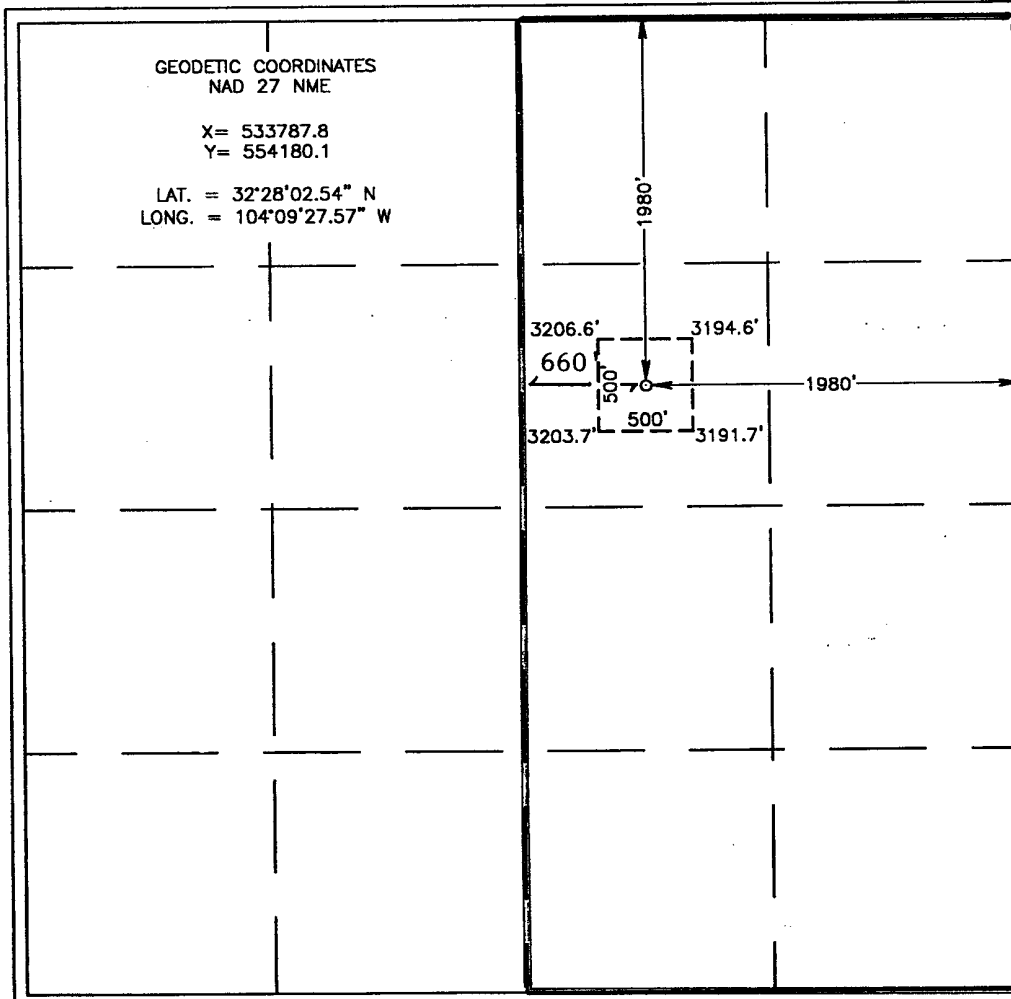
Surface Location

UL or lot No. G	Section 23	Township 21-S	Range 27-E	Lot Idn	Feet from the 1980	North/South line NORTH	Feet from the 1980	East/West line EAST	County EDDY
--------------------	---------------	------------------	---------------	---------	-----------------------	---------------------------	-----------------------	------------------------	----------------

Bottom Hole Location If Different From Surface

UL or lot No.	Section	Township	Range	Lot Idn	Feet from the	North/South line	Feet from the	East/West line	County
Dedicated Acres 320	Joint or Infill No	Consolidation Code	Order No.						

NO ALLOWABLE WILL BE ASSIGNED TO THIS COMPLETION UNTIL ALL INTERESTS HAVE BEEN CONSOLIDATED
OR A NON-STANDARD UNIT HAS BEEN APPROVED BY THE DIVISION



OPERATOR CERTIFICATION

I hereby certify the the information
contained herein is true and complete to the
best of my knowledge and belief.

David Stewart
Signature
David Stewart
Printed Name
Sr. Regulatory Analyst
Title
5/2/03
Date

SURVEYOR CERTIFICATION

I hereby certify that the well location shown
on this plat was plotted from field notes of
actual surveys made by me or under my
supervision, and that the same is true and
correct to the best of my belief.

APRIL 7, 2003

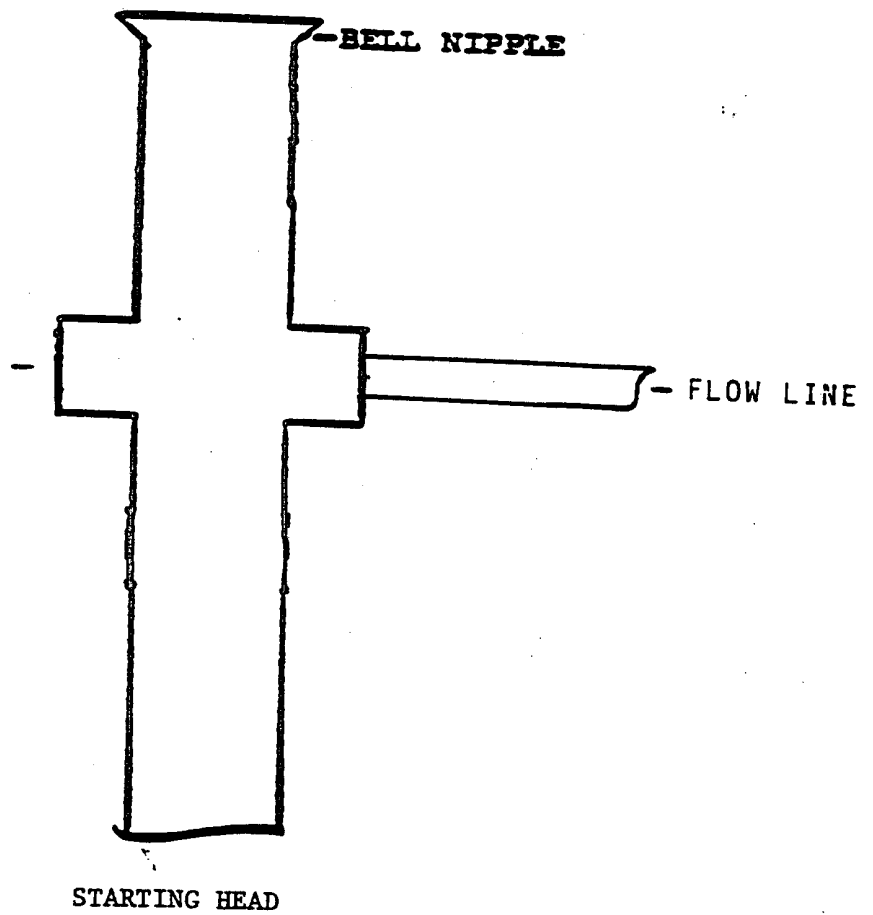
Date Surveyed
Signature & Seal of
Professional Surveyor

G. Edson
Professional Surveyor
03.11.0312

Certificate No. RONALD J. EDSON 3239
GARY EDSON 12641

EXHIBIT A

ANNULAR PREVENTOR
TO BE USED AS DIVERTOR ONLY



BLOWOUT PREVENTOR SCHEME

EXHIBIT A

