

OCD-ARTESIA

FORM APPROVED
OMB No. 1004-0136
Expires November 30, 2000UNITED STATES
DEPARTMENT OF THE INTERIOR
BUREAU OF LAND MANAGEMENT

APPLICATION FOR PERMIT TO DRILL OR REENTER

1a. Type of Work: <input checked="" type="checkbox"/> DRILL <input type="checkbox"/> REENTER		CONFIDENTIAL	5. Lease Serial No. NMNM02860	
1b. Type of Well: <input checked="" type="checkbox"/> Oil Well <input type="checkbox"/> Gas Well <input type="checkbox"/> Other <input checked="" type="checkbox"/> Single Zone <input type="checkbox"/> Multiple Zone			6. If Indian, Allottee or Tribe Name	
2. Name of Operator BASS ENTERPRISES PRODUCTION CO		Contact: CINDI GOODMAN E-Mail: CDGOODMAN@BASSPET.COM	7. If Unit or CA Agreement, Name and No. NMNM71016X	
3a. Address P O BOX 2760 MIDLAND, TX 79702		3b. Phone No. (include area code) Ph: 432-683-2277	8. Lease Name and Well No. POKER LAKE UNIT 221	
3a. Address		3b. Phone No. (include area code)	9. API Well No. 30-015-33864	
4. Location of Well (Report location clearly and in accordance with any State requirements. *) At surface SESE 660FSL 660FEL 32.11514 N Lat, 103.54515 W Lon At proposed prod. zone SESE 660FSL 660FEL 32.11514 N Lat, 103.54515 W Lon		10. Field and Pool, or Exploratory NASH DRAW-DELAWARE		
14. Distance in miles and direction from nearest town or post office* 14 MILES EAST OF MALAGA, NM		11. Sec., T., R., M., or Blk. and Survey or Area Sec 19 T24S R30E Mer NMP		
15. Distance from proposed location to nearest property or lease line, ft. (Also to nearest drig. unit line, if any) 660'		12. County or Parish EDDY		
16. No. of Acres in Lease 2520.68		13. State NM		
17. Spacing Unit dedicated to this well 40.00		18. Distance from proposed location to nearest well, drilling, completed, applied for, on this lease, ft. 990'		
19. Proposed Depth 7700 MD 7700 TVD		20. BLM/BIA Bond No. on file		
21. Elevations (Show whether DF, KB, RT, GL, etc.) 3182 GL		22. Approximate date work will start 02/01/2005		
23. Estimated duration 12 DAYS				

24. Attachments CARLSBAD CONTROLLED WATER BASIN

The following, completed in accordance with the requirements of Onshore Oil and Gas Order No. 1, shall be attached to this form:

- | | |
|---|--|
| 1. Well plat certified by a registered surveyor. | 4. Bond to cover the operations unless covered by an existing bond on file (see Item 20 above). |
| 2. A Drilling Plan. | 5. Operator certification |
| 3. A Surface Use Plan (if the location is on National Forest System Lands, the SUPO shall be filed with the appropriate Forest Service Office). | 6. Such other site specific information and/or plans as may be required by the authorized officer. |

25. Signature (Electronic Submission)	Name (Printed/Typed) CINDI GOODMAN Ph: 432-683-2277	Date 11/11/2004
Title AUTHORIZED REPRESENTATIVE		
Approved by (Signature) /s/ Joe G. Lara	Name (Printed/Typed) /s/ Joe G. Lara	Date 17 DEC 2004
Title FIELD MANAGER	Office CARLSBAD FIELD OFFICE	

Application approval does not warrant or certify the applicant holds legal or equitable title to those rights in the subject lease which would entitle the applicant to conduct operations thereon.

Conditions of approval, if any, are attached.

APPROVAL FOR 1 YEAR

Title 18 U.S.C. Section 1001 and Title 43 U.S.C. Section 1212, make it a crime for any person knowingly and willfully to make to any department or agency of the United States any false, fictitious or fraudulent statements or representations as to any matter within its jurisdiction.

Additional Operator Remarks (see next page)

Electronic Submission #50906 verified by the BLM Well I
For BASS ENTERPRISES PRODUCTION CO, sent to
Committed to AFMSS for processing by LINDA ASKWIG on 11APPROVAL SUBJECT TO
GENERAL REQUIREMENTS
AND SPECIAL STIPULATIONS
ATTACHED

Witness Surface Casing

If earthen pits are used in
association with the drilling of this
well, an OCD pit permit must be
obtained prior to pit construction.

** BLM REVISED ** BLM REVISED ** BLM REVISED ** BLM REVISED ** BLM REVISED **

Additional Operator Remarks:

Surface casing to be set into Rustler below all fresh water sands.
Production casing will be cemented using Zone Seal Cement.
Drilling Procedure, BOP Diagram, Anticipated tops & surface plans attached.

This well is located outside the Secretary's Potash area and outside the R-111 Potash area. There are no potash leases within 1 miles of the location.

DISTRICT I

1625 N. French Dr., Hobbs, NM 88240

DISTRICT II

811 South First, Artesia, NM 88210

DISTRICT III

1000 Rio Brazos Rd., Aztec, NM 87410

DISTRICT IV

2040 South Pacheco, Santa Fe, NM 87505

State of New Mexico

Energy, Minerals and Natural Resources Department

Form C-102

Revised March 17, 1999

Submit to Appropriate District Office

State Lease - 4 Copies

Fee Lease - 3 Copies

OIL CONSERVATION DIVISION

2040 South Pacheco

Santa Fe, New Mexico 87504-2088

☐ AMENDED REPORT

WELL LOCATION AND ACREAGE DEDICATION PLAT

API Number	Pool Code	Pool Name
	47545	NASH DRAW DELAWARE
Property Code	Property Name	Well Number
001796	POKER LAKE UNIT	221
OGRID No.	Operator Name	Elevation
001801	BASS ENTERPRISES PRODUCTION COMPANY	3182'

Surface Location

UL or lot No.	Section	Township	Range	Lot Ida	Feet from the	North/South line	Feet from the	East/West line	County
P	19	24 S	30 E		660	SOUTH	660	EAST	EDDY

Bottom Hole Location If Different From Surface

UL or lot No.	Section	Township	Range	Lot Ida	Feet from the	North/South line	Feet from the	East/West line	County

Dedicated Acres	Joint or Infill	Consolidation Code	Order No.
40	N		

NO ALLOWABLE WILL BE ASSIGNED TO THIS COMPLETION UNTIL ALL INTERESTS HAVE BEEN CONSOLIDATED
OR A NON-STANDARD UNIT HAS BEEN APPROVED BY THE DIVISION

LOT 1 - 40.77 AC.	40.66 AC.	40.65 AC.	40.65 AC.
LOT 2 - 40.87 AC.	40.69 AC.	40.68 AC.	40.66 AC.
LOT 3 - 40.94 AC.	40.69 AC.	40.68 AC.	40.67 AC.
LOT 4 - 41.06 AC.	40.73 AC.	40.70 AC.	40.70 AC.

LAT - N32°11'51.4"
LONG - W103°54'51.5"

3181.9' 3201.0' 3180.1' 3184.3'

APRIL 15, 2004

DATE SURVEYED

SIGNATURE & SEAL OF PROFESSIONAL SURVEYOR

CERTIFICATE No. Gary L. Jones 7977

BASIN SURVEYS

OPERATOR CERTIFICATION

I hereby certify the the information contained herein is true and complete to the best of my knowledge and belief.

William R. Dannels
Signature

W.R. DANNELS

Printed Name

DIVISION DRILLING SUPT.

Title

Nov. 11, 2004

Date

SURVEYOR CERTIFICATION

I hereby certify that the well location shown on this plat was plotted from field notes of actual surveys made by me or under my supervision, and that the same is true and correct to the best of my belief.

APRIL 15, 2004

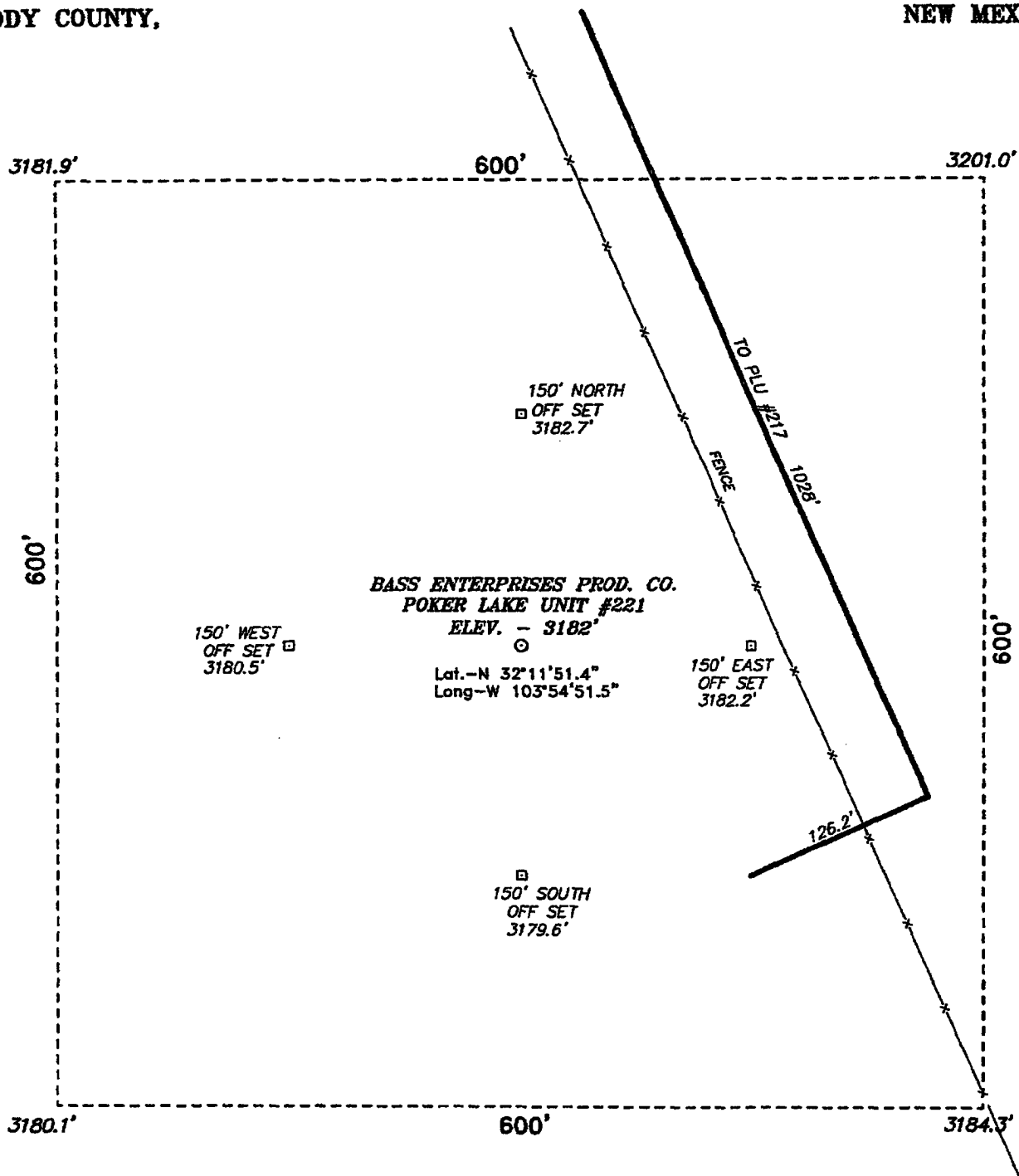
DATE SURVEYED

SIGNATURE & SEAL OF PROFESSIONAL SURVEYOR

Certificate No. Gary L. Jones 7977

BASIN SURVEYS

SECTION 19, TOWNSHIP 24 SOUTH, RANGE 30 EAST, N.M.P.M., EDDY COUNTY, NEW MEXICO.



100 0 100 200 FEET
SCALE: 1" = 100'

DIRECTIONS TO LOCATION:

FROM THE JUNCTION OF CO. RD. 748A AND CO. RD. 748, GO EASTERLY ON CO. RD. 748A FOR APPROX. 1.0 MILE TO A POINT APPROX NORTH OF THE PROPOSED WELL PAD.

BASS ENTERPRISES PRODUCTION CO.

REF: POKER LAKE UNIT No. 221 / Well Pad Topo

THE POKER LAKE UNIT No. 221 LOCATED 660' FROM
THE SOUTH LINE AND 660' FROM THE EAST LINE OF
SECTION 19, TOWNSHIP 24 SOUTH, RANGE 30 EAST,
N.M.P.M., EDDY COUNTY, NEW MEXICO.

BASIN SURVEYS P.O. BOX 1786-HOBBS, NEW MEXICO

W.O. Number: 4148

Drawn By: K. GOAD

Date: 04-23-2004

Disk: KJG CD#7 - 4148A.DWG

Survey Date: 04-15-2004

Sheet 1 of 1 Sheets

**EIGHT POINT DRILLING PROGRAM
BASS ENTERPRISES PRODUCTION CO.**

NAME OF WELL: Poker Lake Unit #221

LEGAL DESCRIPTION - SURFACE: 660' FSL & 660' FEL, Section 19, T-24-S, R-30-E, Eddy County, New Mexico.

POINT 1: ESTIMATED FORMATION TOPS

(See No. 2 Below)

POINT 2: WATER, OIL, GAS AND/OR MINERAL BEARING FORMATIONS

Anticipated Formation Tops: KB 3202' (est) GL 3182'

<u>FORMATION</u>	<u>ESTIMATED TOP FROM KB</u>	<u>ESTIMATED SUBSEA TOP</u>	<u>BEARING</u>
T/Rustler	282'	+2920'	Barren
B/Rustler	477'	+2725'	Barren
T/Salt	527'	+2675'	Barren
B/Salt	3282'	-80	Barren
T/Lamar Lime	3516'	-314'	Barren
T/Ramsey	3542'	-340'	Oil/Gas
T/Lwr Brushy Canyon "8" A	7022'	-3820'	Oil/Gas
T/"Y" Sand	7142'	-3940'	Oil/Gas
TD	7700'		

POINT 3: CASING PROGRAM

<u>TYPE</u>	<u>WITNESS</u>	<u>INTERVALS</u>	<u>PURPOSE</u>	<u>CONDITION</u>
16"		0'- 40'	Conductor	Contractor Discretion
8-5/8", 28#, J-55, ST&C		0'- 480'	Surface	New
5-1/2", 15.5#, J-55, LT&C		0'- 6300'	Production	New
5-1/2", 15.5#, L-80, LT&C		6300'- 7700'	Production	New

POINT 4: PRESSURE CONTROL EQUIPMENT (SEE ATTACHED DIAGRAM)

A BOP equivalent to Diagram 1 will be nipped up on the surface casing head. The BOP stack choke, kill lines, kelly cocks, inside BOP, etc. will be hydro-tested to 70% of internal yield pressure of casing. In addition to the high pressure test, a low pressure (200 psi) test will be required. These tests will be performed:

- Upon installation
- After any component changes
- Fifteen days after a previous test
- As required by well conditions

A function test to insure that the preventers are operating correctly will be performed on each trip.

POINT 5: MUD PROGRAM

<u>DEPTH</u>	<u>MUD TYPE</u>	<u>WEIGHT</u>	<u>FV</u>	<u>PV</u>	<u>YP</u>	<u>FL</u>	<u>Ph</u>
0' - 480'	FW Spud Mud	8.5 - 9.2	70-38	NC	NC	NC	10.0
480' - 5600'	Brine Water	9.8 -10.2	28-30	NC	NC	NC	9.5-10.5
5600' - TD'	Brine Water/Diesel	8.8 - 9.0	32-40	8	2	<25 cc	9.5 - 10.0

**May increase vis for logging purposes only.*

POINT 6: TECHNICAL STAGES OF OPERATION**A) TESTING**

None anticipated.

B) LOGGING

GR-CNL-LDT-AIT from TD to base of Salt (+/- 3282').
GR-CNL-CAL from base of Salt to surface.

C) CONVENTIONAL CORING

None anticipated.

D) CEMENT

<u>INTERVAL</u>	<u>AMOUNT SXS</u>	<u>FT OF FILL</u>	<u>TYPE</u>	<u>GALS/SX</u>	<u>PPG</u>	<u>FT³/SX</u>		
SURFACE:								
Lead 0 - 180' (100% excess circ to surface)	80	180	Permian Basin Critical Zone + 1/4# Flocele	10.4	12.8	1.90		
Tail 180'-480' (100% excess circ to surface)	200	300	Prem Plus + 2% CaCl ₂ + 1/4# Flocele	6.33	14.8	1.35		
PRODUCTION:							COMPRESSIVE	
Base Slurry w/nitrogen 2900-7700' + (50% excess)	750	4800	Premium Plus + 2% Zone Sealant 2000	6.32	9.1-14.5	2.3-1.39	Nitrogen	Strength
							300/600 scf/bbl	1200

E) DIRECTIONAL DRILLING

No directional services anticipated.

POINT 7: ANTICIPATED RESERVOIR CONDITIONS

Normal pressures are anticipated throughout Delaware section. A BHP of 3310 psi (max) or MWE of 8.7 ppg is expected. Lost circulation may exist in the Delaware Section from 3479-7260'. No H₂S is anticipated.

POINT 8: OTHER PERTINENT INFORMATION

A) Auxiliary Equipment

Upper and lower kelly cocks. Full opening stab in valve on the rig floor.

B) Anticipated Starting Date

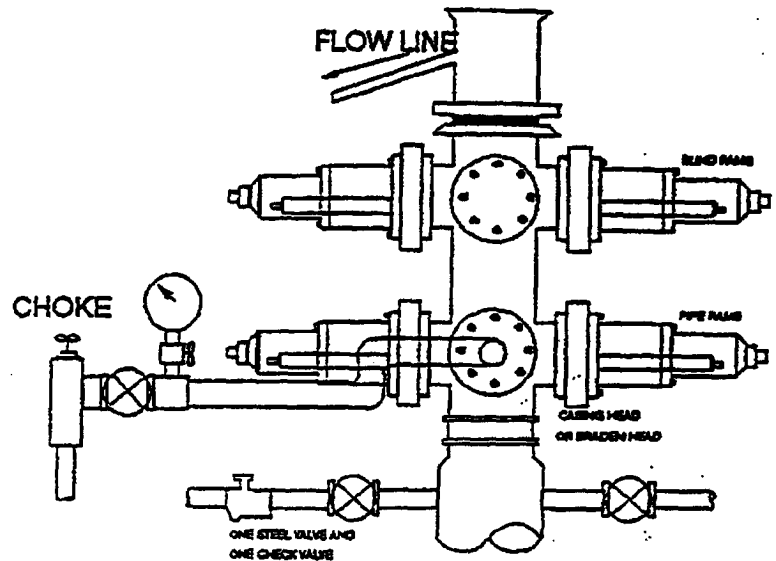
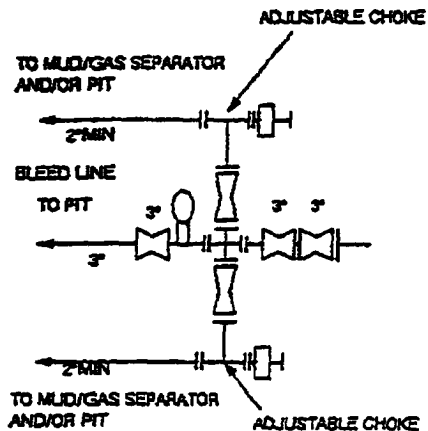
Upon approval

12 days drilling operations

14 days completion operations

FDC/cdg
September 27, 2004

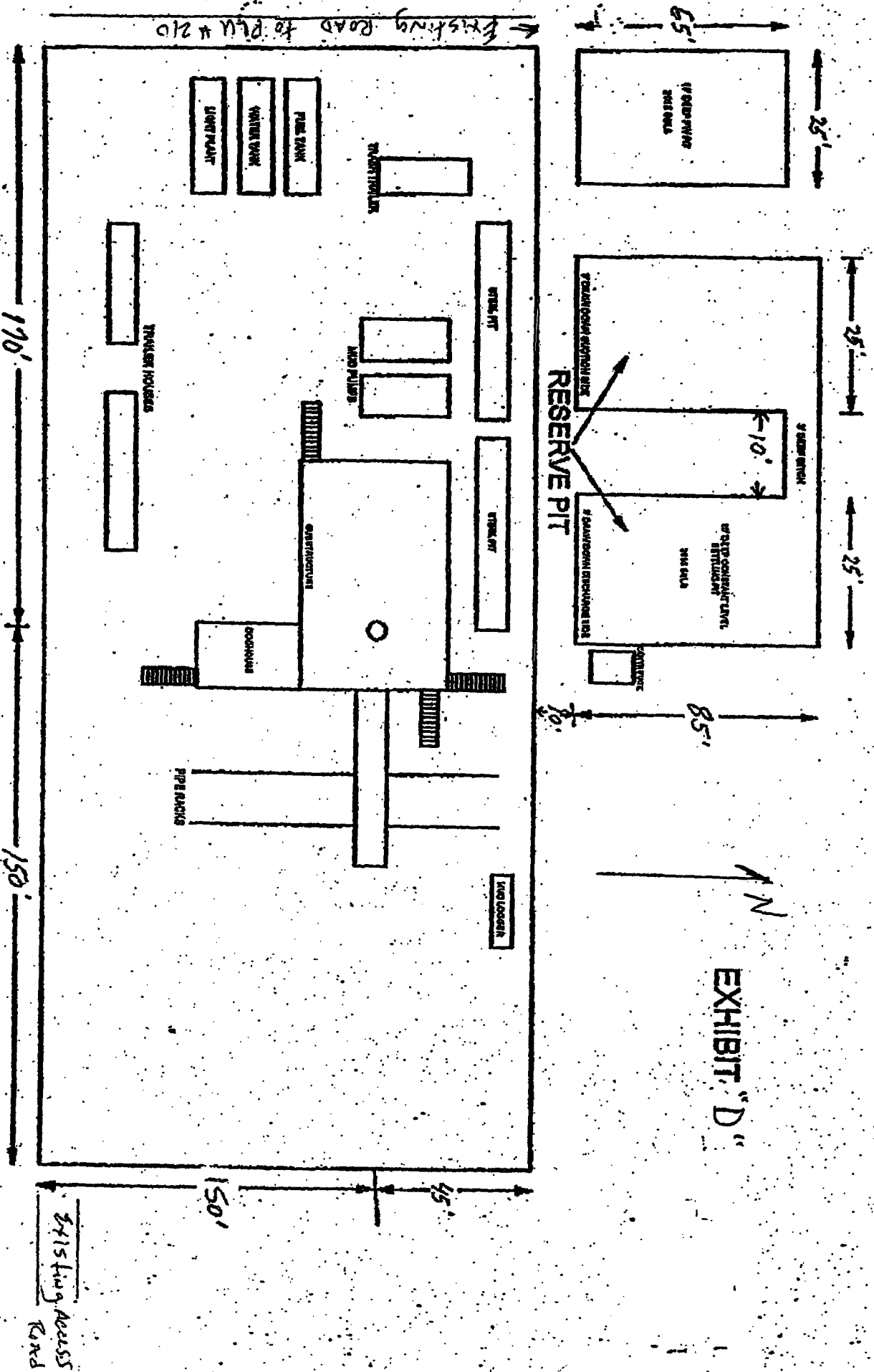
2000 PSI WP



THE FOLLOWING CONSTITUTE MINIMUM BLOWOUT PREVENTER REQUIREMENTS

- A. One double gate blowout preventer with lower rams for pipe and upper rams blind, all hydraulically controlled.
- B. Opening on preventers between rams to be flanged, studded or clamped and at least two inches in diameter.
- C. All connections from operating manifold to preventers to be all steel hose or tube a minimum of one inch in diameter.
- D. The available closing pressure shall be at least 15% in excess of that required with sufficient volume to operate (close, open, and re-close) the preventers.
- E. All connections to and from preventers to have a pressure rating equivalent to that of the BOP's.
- F. Manual controls to be installed before drilling cement plug.
- G. Valve to control flow through drill pipe to be located on rig floor.
- H. All chokes will be adjustable. Choke spool may be used between rams.

Bass Enterprises Production Co.
Poker Lake Unit # 213



BASS ENTERPRISES PRODUCTION COMPANY **POKER LAKE UNIT WELLS RESERVE PIT DIMENSIONS**

