



**marbob**  
energy corporation

File

May 12, 2003

Oil Conservation Division  
811 South First Street  
Artesia, New Mexico 88210

Attention: Mr. Tim Gum



**RE: Unorthodox Well Location**

Dear Mr. Gum:

Marbob Energy Corporation respectfully requests an administrative approval of the following unorthodox location pursuant to Order No. R-7900-B:

30-015-32782

**Burch Keely Unit #810**

1345 feet from the South line  
1315 feet from the West line  
Section 18, Township 17 South,  
Range 30 East  
Eddy County, New Mexico

30-015-32783

**Burch Keely Unit #926**

2615 feet from the South line  
1650 feet from the West line  
Section 18, Township 17 South,  
Range 30 East  
Eddy County, New Mexico

30-015-28090

**Burch Keely Unit #811**

1310 feet from the South line  
2545 feet from the West line  
Section 18, Township 17 South,  
Range 30 East  
Eddy County, New Mexico

30-015-32786

**Burch Keely Unit #930**

1320 feet from the South line  
25 feet from the West line  
Section 18, Township 17 South,  
Range 30 East  
Eddy County, New Mexico

These wells may be completed in the upper 500 feet of the Yeso, the Grayburg, the San Andres, and or the Seven Rivers Formation in the Grayburg Jackson Pool.

Attached to the applications are the following Exhibits:

- A. Oil Conservation Division Form C-102 with proration unit outlined (Exhibit A).

- B. A plat which shows all other wells within the quarter-quarter section and Burch Keely boundary (Exhibit B):

Well number 810 will be 3935 feet from the closest unit boundary and 25 feet from the interior quarter quarter line; well number 811 will be 2735 feet from the closest unit boundary and 10 feet from the interior quarter quarter line; well number 926 will be 2665 feet from the closest unit boundary and 25 feet from the interior quarter quarter line; well number 930 will be 3960 feet from the closest unit boundary and 25 feet from the interior quarter quarter line.

If these unorthodox locations meet with your approval, please sign below and return to our office. Thank you for your help.

Sincerely,

*Misti McLurg*

Misti McLurg  
Land Department

/mm  
Attachments

Approved this 15<sup>th</sup> day of May, 2003.

By: *Bryan Brown*

Title:  
Oil Conservation Division  
Artesia Office



DISTRICT I  
P.O. Box 1888, Hobbs, NM 88241-1888

DISTRICT II  
P.O. Boxer DD, Artesia, NM 88211-0719

DISTRICT III  
1000 Rio Brazos Rd., Aztec, NM 87410

DISTRICT IV  
P.O. Box 2088, SANTA FE, N.M. 87504-2088

State of New Mexico  
Energy, Minerals and Natural Resources Department

OIL CONSERVATION DIVISION

P.O. Box 2088  
Santa Fe, New Mexico 87504-2088

MAR 04 2003

Form C-102  
Revised February 10, 1994  
Submit to Appropriate District Office  
State Lease - 4 Copies  
Fee Lease - 3 Copies

WELL LOCATION AND ACREAGE DEDICATION PLAT

☐ AMENDED REPORT

API Number 30-015	Pool Code 28509	Pool Name GRBG JACKSON SR Q GRBG SA
Property Code 6497	Property Name BURCH KEELY UNIT	Well Number 811
OGRID No. 14049	Operator Name MARBOB ENERGY CORPORATION	Elevation 3635'

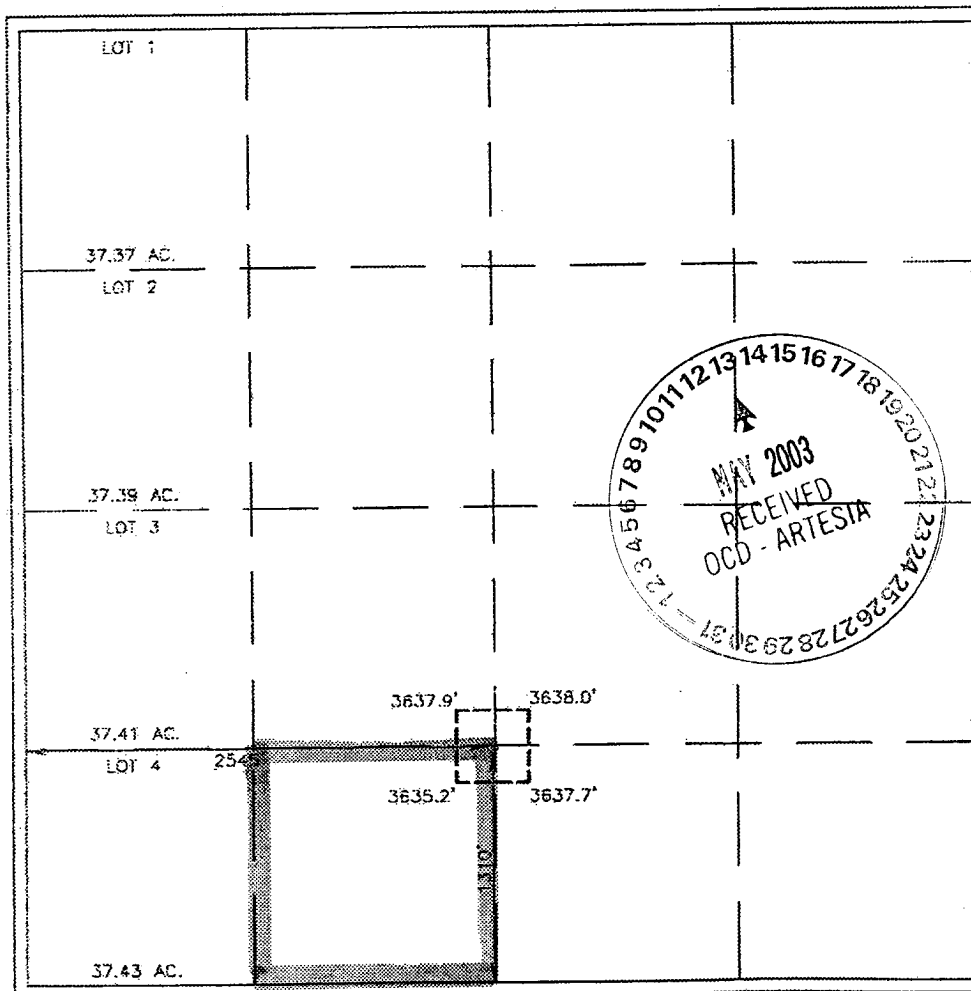
Surface Location

UL or lot No.	Section	Township	Range	Lot Idn	Feet from the	North/South line	Feet from the	East/West line	County
N	18	17-S	30-E		1310	SOUTH	2545	WEST	EDDY

Bottom Hole Location If Different From Surface

UL or lot No.	Section	Township	Range	Lot Idn	Feet from the	North/South line	Feet from the	East/West line	County
Dedicated Acres 40		Joint or Infill	Consolidation Code	Order No.					

NO ALLOWABLE WILL BE ASSIGNED TO THIS COMPLETION UNTIL ALL INTERESTS HAVE BEEN CONSOLIDATED  
OR A NON-STANDARD UNIT HAS BEEN APPROVED BY THE DIVISION



OPERATOR CERTIFICATION	
I hereby certify the information contained herein is true and complete to the best of my knowledge and belief.	
<i>Diana J. Cannon</i>	
Signature	
DIANA J. CANNON	
Printed Name	
PRODUCTION ANALYST	
Title	
MARCH 21, 2003	
Date	
SURVEYOR CERTIFICATION	
I hereby certify that the well location shown on this plat was plotted from field notes of actual surveys made by me or under my supervision and that the same is true and correct to the best of my belief.	
FEBRUARY 20, 2003	
Date Surveyed	
Signature & Seal of Professional Surveyor	
<i>Gary J. Edson</i> 4/28/03	
03.11.0218	
Certificate No. RONALD J. EIDSON 3239	
GARY EIDSON 12641	

