

District I
1625 N. French Dr., Hobbs, NM 88240
District II
1301 W. Grand Avenue, Artesia, NM 88210
District III
1000 Rio Brazos Road, Aztec, NM 87410
District IV
1220 S. St. Francis Dr., Santa Fe, NM 87505

State of New Mexico
Energy Minerals and Natural Resources

Form C-101
May 27, 2004

Oil Conservation Division
1220 South St. Francis Dr.
Santa Fe, NM 87505

RECEIVED

Submit to appropriate District Office
FEB 24 2005 ☐ AMENDED REPORT

ARTESIA

APPLICATION FOR PERMIT TO DRILL, RE-ENTER, DEEPEN, PLUGBACK, OR ADD A ZONE

¹ Operator Name and Address MYCO INDUSTRIES, INC. P.O. BOX 840, ARTESIA, NM 88211-0840		² OGRID Number 015445
³ Property Code	⁵ Property Name THROCKMORTON 32 STATE COM	⁴ API Number 30 - 015 - 33972
⁹ Proposed Pool 1 CARLSBAD MORROW; EAST		⁶ Well No. #1
¹⁰ Proposed Pool 2		

7 Surface Location

UL or lot no. H	Section 32	Township 21S	Range 28E	Lot Idn	Feet from the 1980'	North/South line NORTH	Feet from the 660'	East/Westline EAST	County EDDY
--------------------	---------------	-----------------	--------------	---------	------------------------	---------------------------	-----------------------	-----------------------	----------------

8 Proposed Bottom Hole Location If Different From Surface

UL or lot no.	Section	Township	Range	Lot Idn	Feet from the	North/South line	Feet from the	East/Westline	County
---------------	---------	----------	-------	---------	---------------	------------------	---------------	---------------	--------

Additional Well Information

¹¹ Work Type Code N	¹² Well Type Code G	¹³ Cable/Rotary R	¹⁴ Lease Type Code P	¹⁵ Ground Level Elevation 3174'
¹⁶ Multiple N	¹⁷ Proposed Depth 12,500'	¹⁸ Formation MORROW	¹⁹ Contractor NABORS DRILLING	²⁰ Spud Date 03/15/2005
Depth to Groundwater 350-400'		Distance from nearest fresh water well > 1 MILE		Distance from nearest surface water > 1 MILE
Pit: Liner: Synthetic <input checked="" type="checkbox"/> 20 mil thick Clay <input type="checkbox"/> Pit Volume: bbls Drilling Method: Closed-Loop System <input type="checkbox"/> Fresh Water <input type="checkbox"/> Brine <input type="checkbox"/> Diesel/Oil-based <input type="checkbox"/> Gas/Air <input type="checkbox"/>				

21 Proposed Casing and Cement Program

Hole Size	Casing Size	Casing weight/foot	Setting Depth	Sacks of Cement	Estimated TOC
17-1/2"	13-3/8"	48.0#	475'	500	CIRCULATE
12-1/4"	9-5/8"	36.0#	2700'	1100	CIRCULATE
8-3/4"	5-1/2"	17.0#	12500'	2100	CIRCULATE
					2-STAGE

²² Describe the proposed program. If this application is to DEEPEN or PLUG BACK, give the data on the present productive zone and proposed new productive zone. Describe the blowout prevention program, if any. Use additional sheets if necessary.

*NOTE: WILL RUN FLUID CALIPER ON ALL STRINGS

NOTE ATTACHED APPLICATION FOR DRILLING - PROCEDURE

²³ I hereby certify that the information given above is true and complete to the best of my knowledge and belief. I further certify that the drilling pit will be constructed according to NMOCD guidelines ☐, a general permit ☒, or an (attached) alternative OCD-approved plan ☐.

OIL CONSERVATION DIVISION

Approved by:

TIM W. GUM

DISTRICT II SUPERVISOR

Printed name: A.N. MUNCY

Title: EXPLORATION/OPERATIONS MANAGER

E-mail Address: anmuncy@mycoinc.com

Date: 02/23/2005

Phone: (505)748-4289

Approval Date: FEB 28 2005

Expiration Date: FEB 28 2006

Conditions of Approval Attached ☐

**MYCO INDUSTRIES, INC.
THROCKMORTON 32 STATE COM #1
1980' FNL & 660' FEL (UNIT H)
N/2 OF SEC. 32-T21S-R28E
EDDY COUNTY, NEW MEXICO**

APPLICATION FOR DRILLING - PROCEDURE

1. The estimated tops of geologic markers are as follows:

Bell Canyon	2672'	Atoka	11,022'
Brushy Canyon	3402'	Morrow "A"	11,422'
Bone Spring LS	5522'	Morrow "B"	11,522'
Wolfcamp	9072'	Morrow "C"	11,772'
Strawn	10,422'	TD	12,500'

2. The estimated depths at which anticipated water, oil or gas formations are expected to be encountered:

Water:	350' – 400'
Oil or Gas:	9700' – 11,950'

3. Pressure Control Equipment: BOPE will be installed on the 9-5/8" casing and rated for 5000 BOP. Systems will be consistent with API RP 53. Pressure tests will be conducted before drilling out from under all casing strings which are set and cemented in place. Blowout Preventor controls will be installed prior to drilling the surface plug and will remain in use until the well is completed or abandoned. Preventors will be inspected and operated at least daily to ensure good mechanical working order, and this inspection recorded on the daily drilling report.

- A. Auxiliary Equipment: Kelly cock, pit level indicators, flow sensor equipment and a sub with full opening valve to fit the drill pipe and collars will be available on the rig floor in the open position at all times for use when Kelly is not in use.

4. THE PROPOSED CASING AND CEMENTING PROGRAM:

- A. Casing Program: (All New)

<u>Hole Size</u>	<u>Casing Size</u>	<u>Wt./Ft.</u>	<u>Grade</u>	<u>Thread</u>	<u>Coupling</u>	<u>Interval</u>	<u>Length</u>
17 1/2"	13 3/8"	48.0#	H-40	8R	ST&C	0-475'	475'
12 1/4"	9 5/8"	36.0#	J-55	8R	LT&C	0-2700'	2700'
8 3/4"	5 1/2"	17.0#	K/N-80	8R	LT&C	0-12500'	12500'

Minimum Casing Design Factors: Collapse 1.125, Burst 1.0, Tensile Strength 1.8

- B. Cementing Program:

Surface Casing: 13 3/8" casing circulate cement 500 sacks.

Intermediate Casing: 9 5/8" casing circulate cement 1100 sacks.

Production Casing: 5 1/2" casing circulate cement 2100 sacks, (2-Stage)

5. MUD PROGRAM AND AUXILIARY EQUIPMENT:

<u>Interval</u>	<u>Type</u>	<u>Weight</u>	<u>Viscosity</u>	<u>Fluid Loss</u>
Spud to 475'	FW	8.6 – 9.8	32-40	N/C
475' – 2700'	FW	10.0 – 10.3	28	N/C
2700' – TD	SW Gel/Starch	9.4 – 9.8	32-40	10cc

Sufficient mud material(s) to maintain mud properties, control lost circulation and contain a blow out will be available at the well site during drilling operations. Mud will be checked hourly by rig personnel.

6. EVALUATION PROGRAM:

Samples: 2500' to TD (12,100')

Logging: Mud Logger (1-man); 2500'-TD *GR 0'-TD, Porosity & Resistivity 2500'-TD

Coring: None anticipated

DST's: None anticipated

7. ABNORMAL CONDITIONS, BOTTOM HOLE PRESSURE, AND POTENTIAL HAZARDS:

Anticipated BHP:

From: 0	TO: 425'	Anticipated Max. BHP: 200 PSI
From: 425'	TO: 2200'	Anticipated Max. BHP: 500 PSI
From: 2200'	TO: TD	Anticipated Max. BHP: 5000 PSI

Abnormal Pressures Anticipated: None

Lost Circulation Zones Anticipated: None

H2S Zones Anticipated: None

Maximum Bottom Hole Temperature: 170° F

8. ANTICIPATED STARTING DATE:

Plans are to drill spud this well approximately March 15, 2005. It should take approximately 40 days to drill the well with completion taking another 10-20 days.

DISTRICT I

1626 N. FRENCH DR., HOBBES, NM 88240

DISTRICT II

1301 W. GRAND AVENUE, ARTESIA, NM 88210

DISTRICT III

1000 Rio Brazos Rd., Aztec, NM 87410

DISTRICT IV

1220 S. ST. FRANCIS DR., SANTA FE, NM 87505

State of New Mexico

Energy, Minerals and Natural Resources Department

OIL CONSERVATION DIVISION
1220 SOUTH ST. FRANCIS DR.
Santa Fe, New Mexico 87505

Form C-102

Revised JUNE 10, 2003

Submit to Appropriate District Office

State Lease - 4 Copies

Fee Lease - 3 Copies

WELL LOCATION AND ACREAGE DEDICATION PLAT

☐ AMENDED REPORT

API Number	Pool Code	Pool Name
Property Code	Property Name THROCKMORTON 32 STATE COM	Well Number 1
OGRID No.	Operator Name MYCO INDUSTRIES, INC.	Elevation 3174'

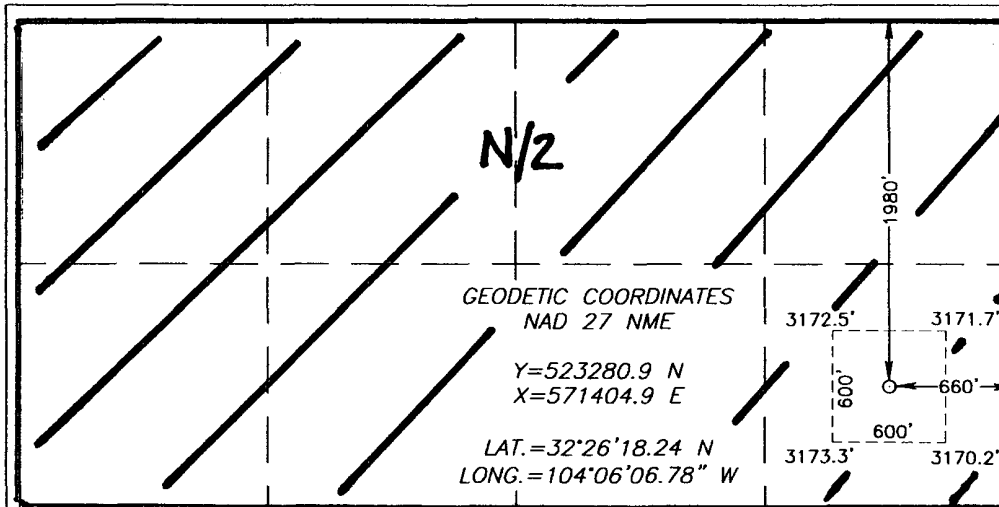
Surface Location

UL or lot No.	Section	Township	Range	Lot Idn	Feet from the	North/South line	Feet from the	East/West line	County
H	32	21-S	28-E		1980	NORTH	660	EAST	EDDY

Bottom Hole Location If Different From Surface

UL or lot No.	Section	Township	Range	Lot Idn	Feet from the	North/South line	Feet from the	East/West line	County
Dedicated Acres	Joint or Infill	Consolidation Code	Order No.						

NO ALLOWABLE WILL BE ASSIGNED TO THIS COMPLETION UNTIL ALL INTERESTS HAVE BEEN CONSOLIDATED
OR A NON-STANDARD UNIT HAS BEEN APPROVED BY THE DIVISION



OPERATOR CERTIFICATION

I hereby certify the the information
contained herein is true and complete to the
best of my knowledge and belief.

a. n. mummy, PELS
Signature

A.N.MVNCY
Printed Name

EXPLOR-OPER MGR
Title

2-23-05
Date

SURVEYOR CERTIFICATION

I hereby certify that the well location shown
on this plat was plotted from field notes of
actual surveys made by me or under my
supervision and that the same is true and
correct to the best of my belief.

FEBRUARY 14, 2005

Date Surveyed LA

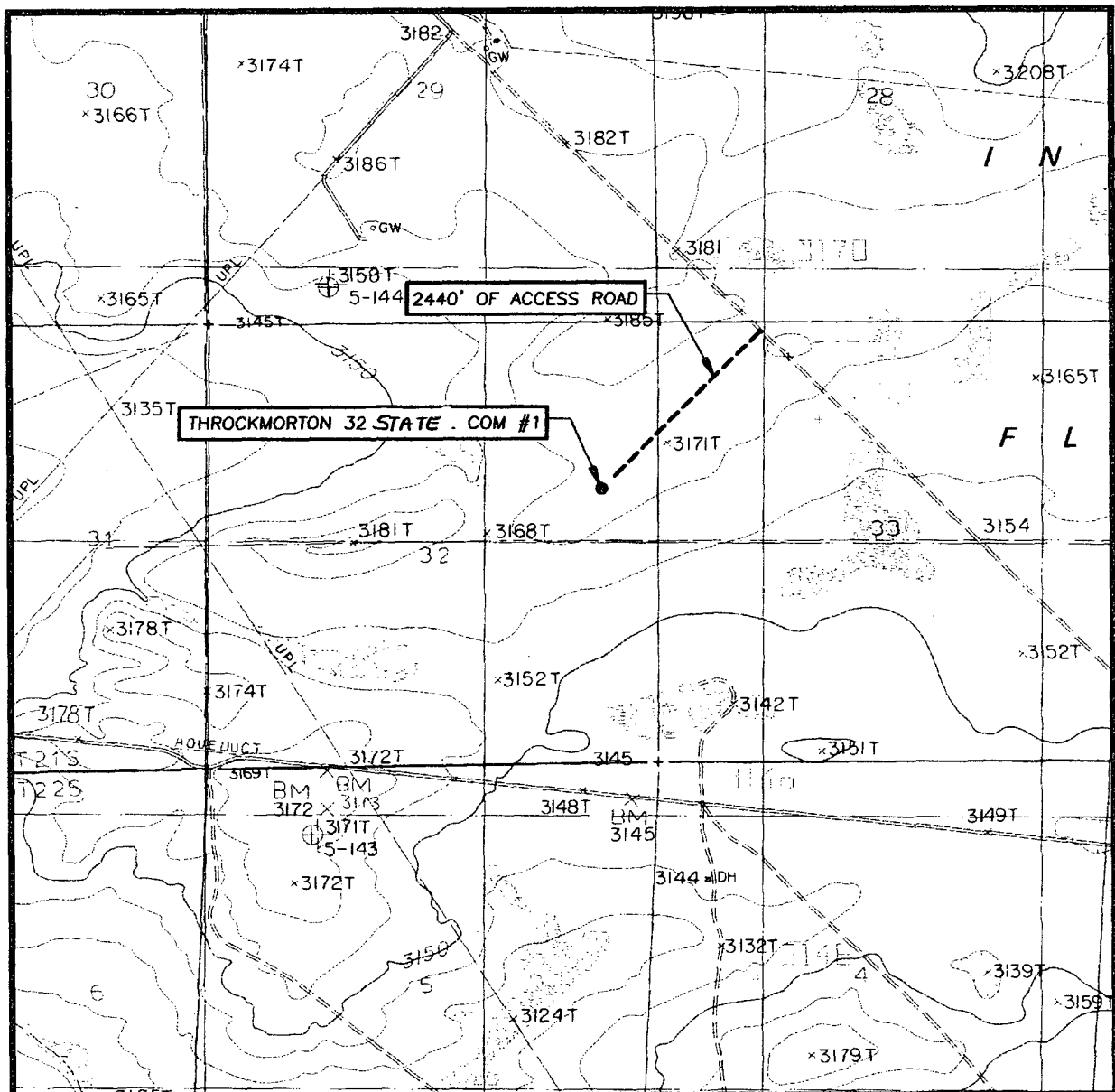
Signature & Seal of
Professional Surveyor

GARY E. ELLISON
Professional Surveyor

05.11.0224
Date

Certificate No. *GARY ELLISON* 12641

LOCATION VERIFICATION MAP



SCALE: 1" = 2000'

CONTOUR INTERVAL:
INDIAN FLATS, N.M. - 10'

SEC. 32 TWP. 21-S RGE. 28-E

SURVEY N.M.P.M.

COUNTY EDDY

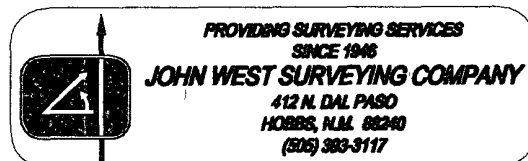
DESCRIPTION 1980' FNL & 660' FEL

ELEVATION 3174'

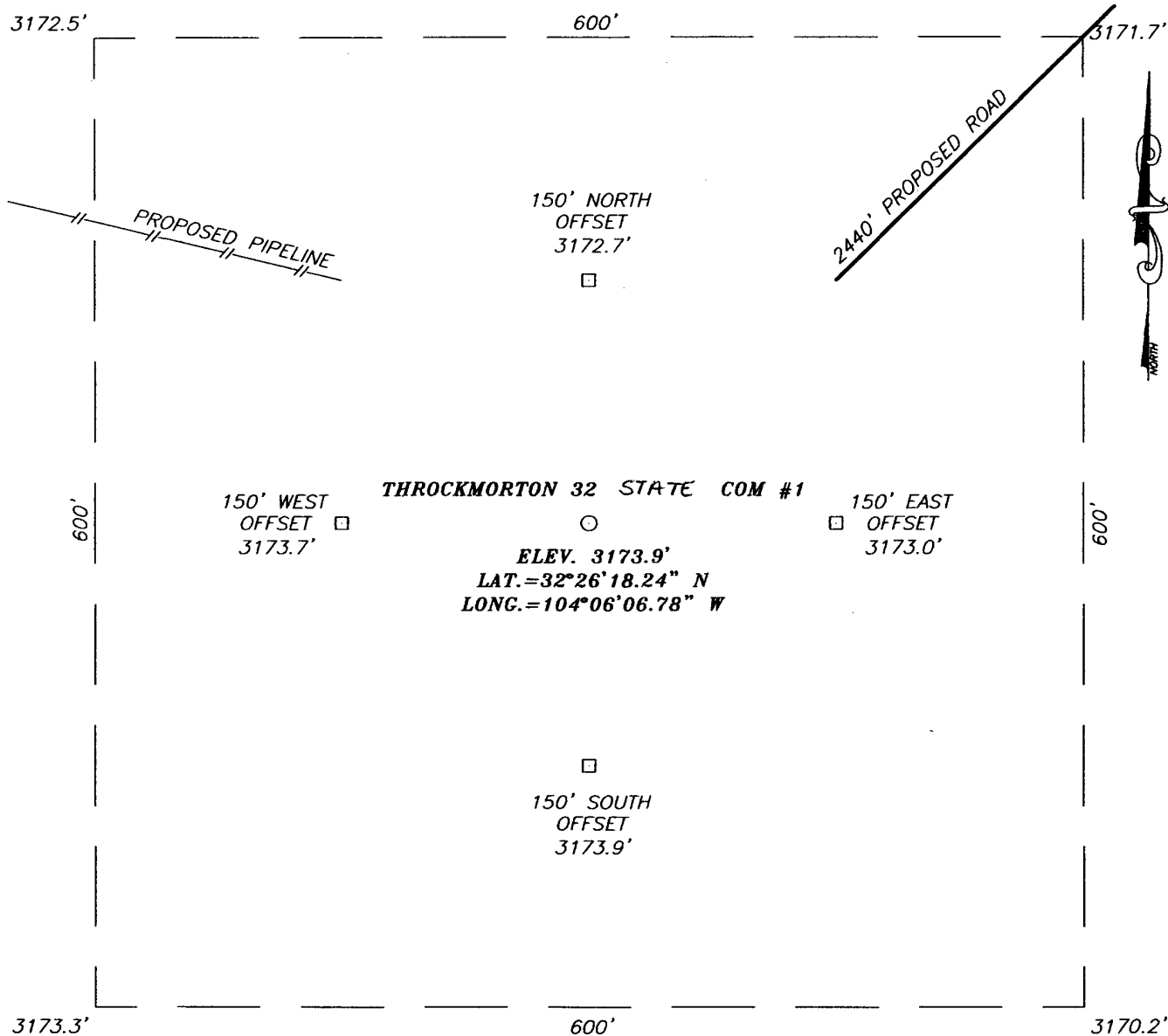
OPERATOR MYCO INDUSTRIES, INC.

LEASE THROCKMORTON 32 STATE COM

U.S.G.S. TOPOGRAPHIC MAP
INDIAN FLATS, N.M.

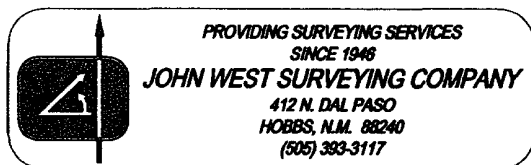
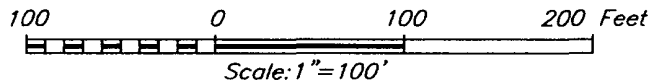


SECTION 32, TOWNSHIP 21 SOUTH, RANGE 28 EAST, N.M.P.M.,
EDDY COUNTY, NEW MEXICO



DIRECTIONS TO LOCATION

AT MILE MARKER ON U.S. HWY. 62-180 EAST OF CARLSBAD. GO SOUTHEAST ALONG CALICHE ROAD 2.3 MILES TO THE BEGINNING OF A PROPOSED ROAD SURVEY. FOLLOW PROPOSED ROAD SURVEY SOUTHWEST 2440' TO THIS LOCATION.

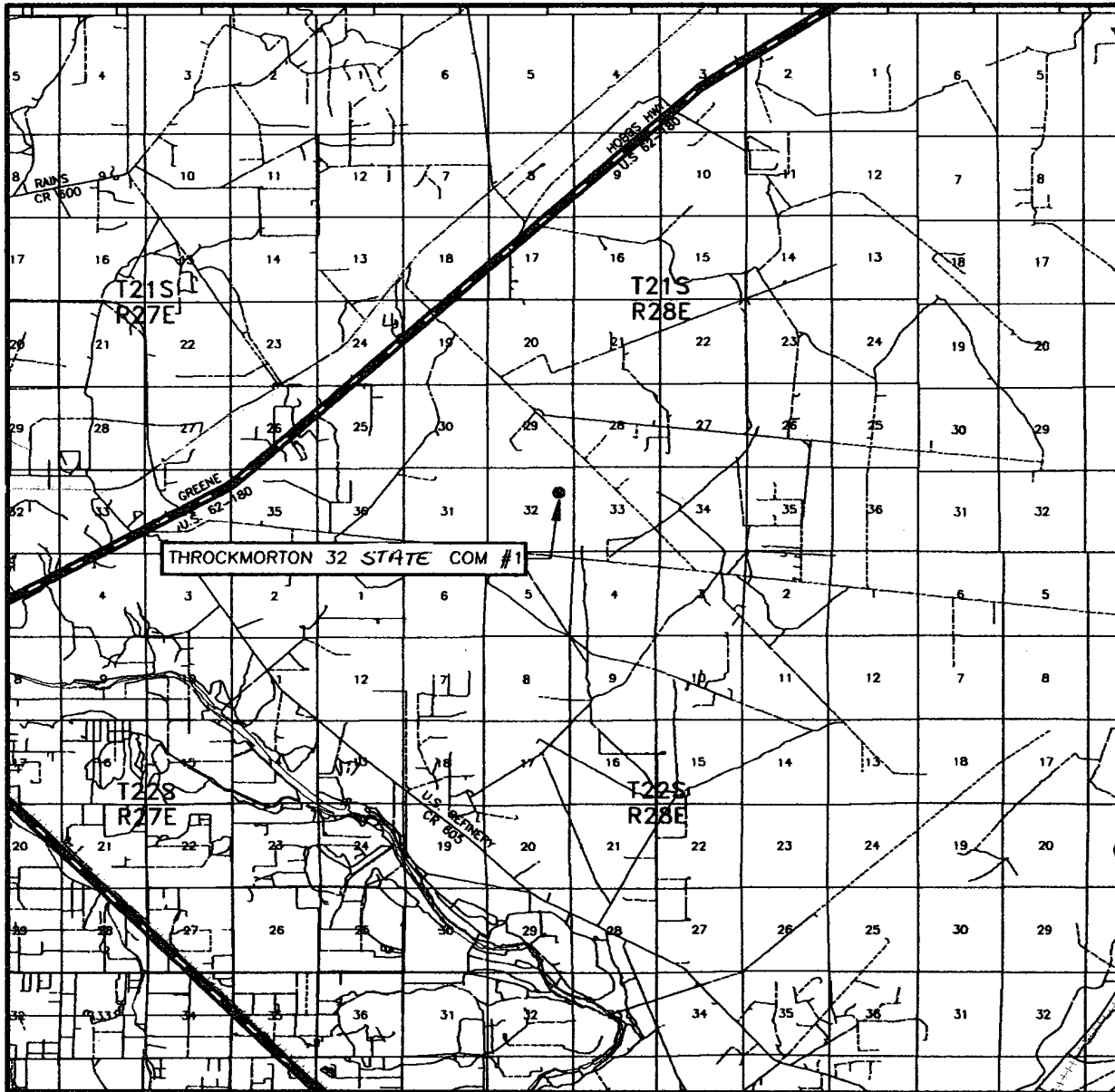


MYCO INDUSTRIES, INC.

THROCKMORTON 32 STATE COM #1 WELL
 LOCATED 1980 FEET FROM THE NORTH LINE
 AND 660 FEET FROM THE EAST LINE OF SECTION 32,
 TOWNSHIP 21 SOUTH, RANGE 28 EAST, N.M.P.M.,
 EDDY COUNTY, NEW MEXICO.

Survey Date: 2/14/05	Sheet 1 of 1 Sheets
W.O. Number: 05.11.0224	Dr By: LA
Date: 2/19/05	Disk: CD#4
05110224	Scale: 1"=100'

VICINITY MAP



SCALE: 1" = 2 MILES

SEC. 32 TWP. 21-S RGE. 28-E

SURVEY N.M.P.M.

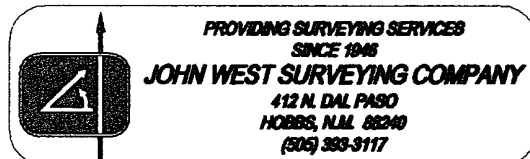
COUNTY EDDY

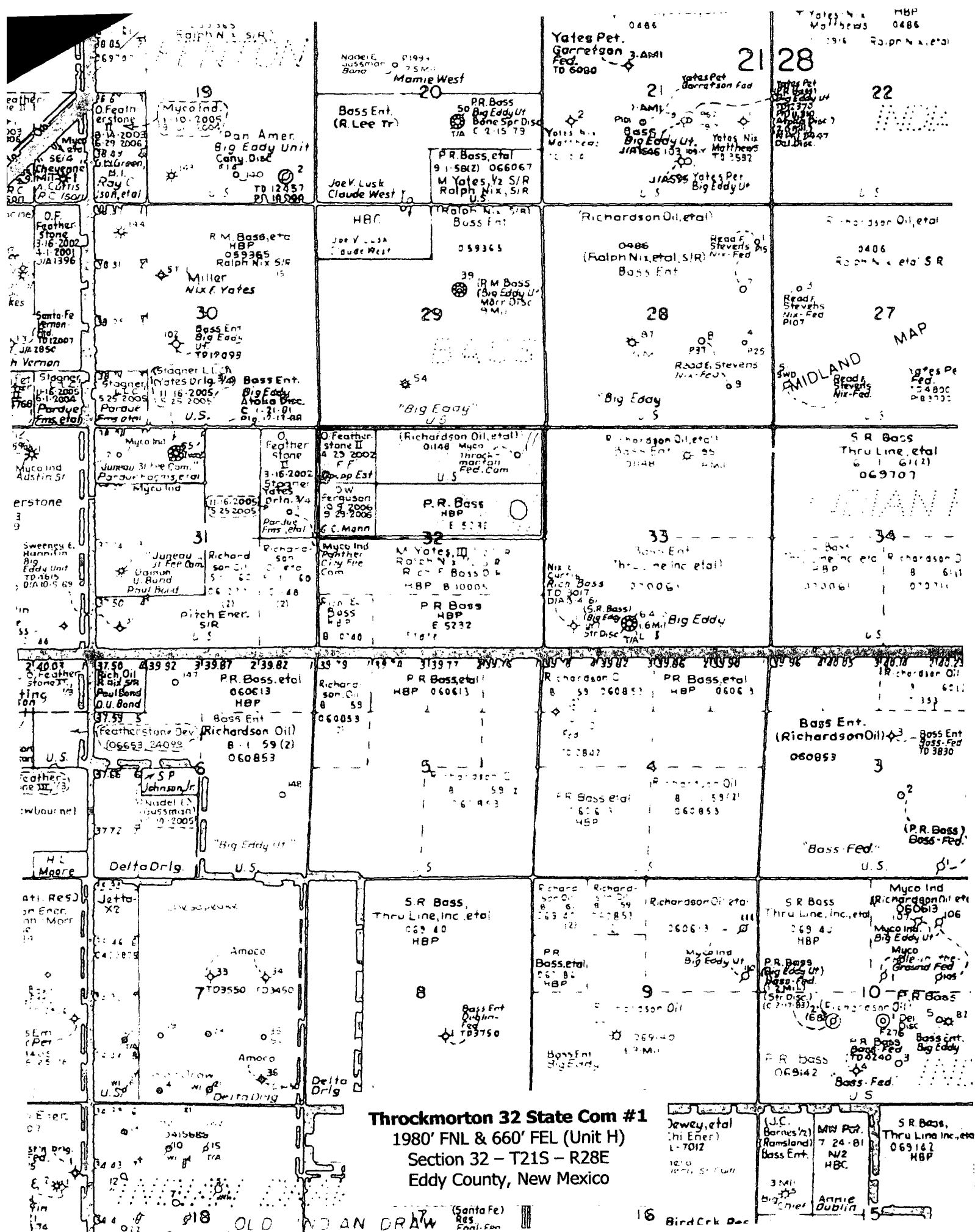
DESCRIPTION 1980' FNL & 660' FEL

ELEVATION 3174'

OPERATOR MYCO INDUSTRIES, INC.

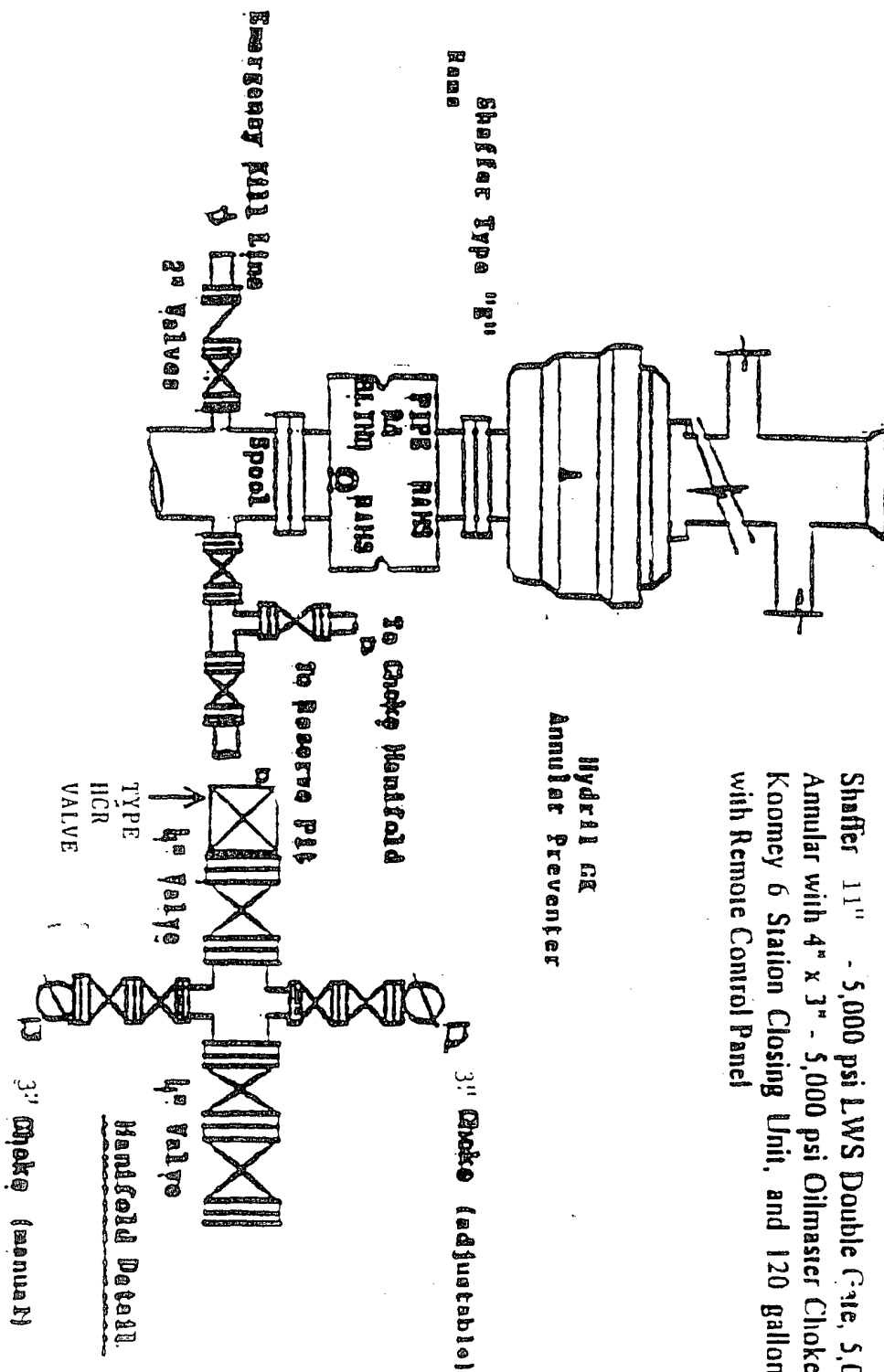
LEASE THROCKMORTON 32 STATE COM





Ockmorton 32 State Com #1
 1980' FNL & 660' FEL (Unit H)
 Section 32 - T21S - R28E
 Eddy County, New Mexico

BLOWOUT PREVENTOR SCHEMATIC



Shafter 11" - 5,000 psi LWS Double Gate, 5,000 psi Shafter Annular with 4" x 3" - 5,000 psi Oilmaster Choke Manifold and Koomey 6 Station Closing Unit, and 120 gallon Accumulator with Remote Control Panel

Hydril CR Annular Preventer

Shafter Type 11"

3" Choke Manifold

3" Reserve Pit

Emergency Full Line 2" Valves

TYPE HCR VALVE

3" Choke (manual)

Handfold Detail

4" Valve

3" Choke (adjustable)

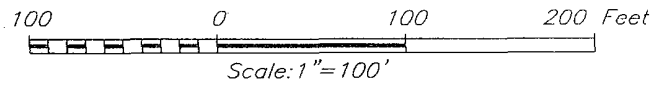
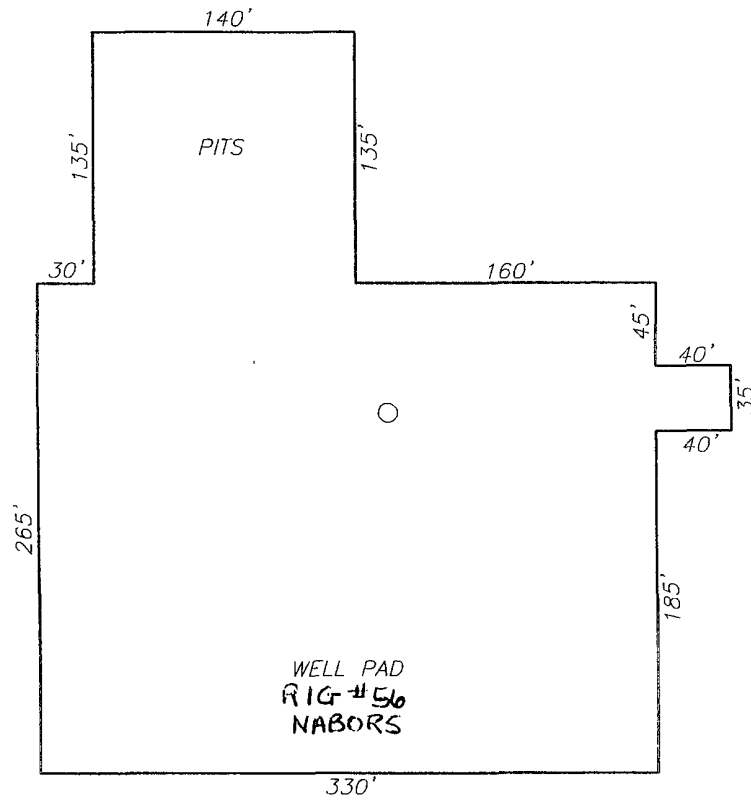
Choke Manifold

Throckmorton 32 State Com #1

1980' FNL & 660' FEL (Unit H)

Section 32 – T21S – R28E

Eddy County, New Mexico





NEW MEXICO ENERGY, MINERALS and NATURAL RESOURCES DEPARTMENT

BILL RICHARDSON

Governor

Joanna Prukop

Cabinet Secretary

Mark E. Fesmire, P.E.

Director

Oil Conservation Division

20 December 2004

Yates Petroleum Corporation
105 South Fourth Street
Artesia, New Mexico 88210

RE: General Plan

Dear Mr. Dolan:

The Artesia District of the Oil Conservation Division is in receipt of a General Plan (copy attached) submitted by Yates Petroleum Corporation dated 7 December, 2004. After review the Oil Conservation Division has accepted and approved the Plan. This plan shall be in effect as of 20 December, 2004 and will supersede the "General Plan" dated 14 April, 2004 submitted by Yates Petroleum Corporation.

Van Barton
Field Rep. II

MARTIN YATES, III
1912 - 1985
FRANK W. YATES
1936 - 1986



105 SOUTH FOURTH STREET
ARTESIA, NEW MEXICO 88210-2118
TELEPHONE (505) 748-1471

S. P. YATES
CHAIRMAN OF THE BOARD
JOHN A. YATES
PRESIDENT
PEYTON YATES
EXECUTIVE VICE PRESIDENT
RANDY G. PATTERSON
SECRETARY
DENNIS G. KINSEY
TREASURER

Mr. Tim Gum
Oil Conservation Division
State of New Mexico
1301 West Grand Ave.
Artesia, NM 88210

December 7, 2004

**Re: General Plan
Drilling, Workover, and Blowdown Pit design and closure.**

Dear Tim,

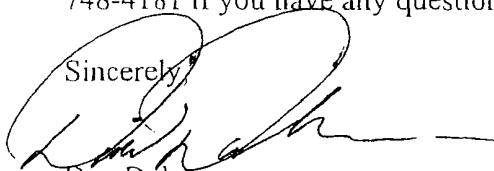
Yates Petroleum Corp. (Yates) appreciates your meeting with us on December 1, 2004 to help clarify some issues in connection with *Rule 50* and the *November 1, 2004 Pit and Below Grade Tank Guidelines*.

As you know Yates submitted and received approval of a general plan for opening and closing of drilling and workover pits on April 15, 2004. In an effort to simplify the required paperwork, we would now like to modify that plan to include more detailed information.

For purpose of this plan Yates, et al (Yates) includes:

1. Yates Petroleum Corp.
2. Yates Drilling Company
3. Abo Petroleum Corp.
4. Myco Industries, Inc.

The modified plan is attached for your review and approval. Please contact me at 505-748-4181 if you have any questions or need further information.

Sincerely,

Dan Dolan

Yates Petroleum Corp. et al
General Plan
Pit Permitting, Construction and Closure
December 7, 2004

1. Pit Permitting and Opening –

- a. Application for the pit permit shall be made on the Application for Permit to Drill (APD). The APD will include the following:
 - i. Site Ranking.
 - ii. Reference to this “General Plan” approved by NMOCD.
 - iii. Description of the proposed disposal method as outlined below.
 1. When deep trench burial is proposed, approval of the APD will constitute a permit for both the drilling pit and the encapsulation pit(s). *A separate Form C-144 will not be required.*
- b. All pits will be designed and constructed pursuant to Part II of *November 1, 2004 Pit and Below Grade Tank Guidelines (Guidelines)*. Pits shall be constructed as depicted in attached *Figures A, B, C or D* based on site specific requirements.

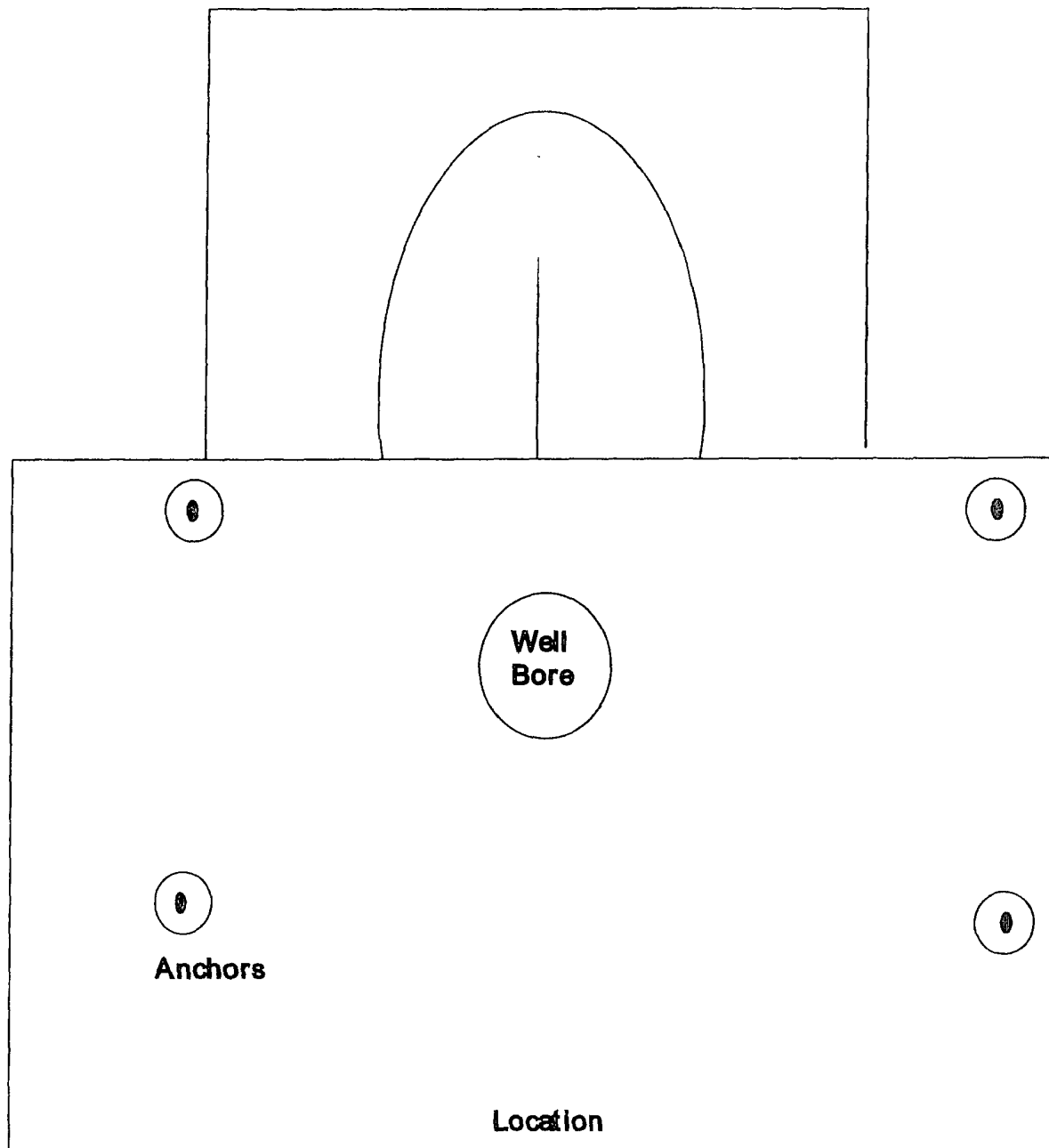
2. Pit Closure –Pits will be closed based on site specific conditions pursuant to Part IV of Guidelines by one of the following methods:

- a. Excavation and removal. Wastes will be excavated and disposed of at an off-site OCD-approved facility or location.
- b. Below Grade Encapsulation. Encapsulation will be pursuant to Part IV.B.2 of Guidelines.
- c. Capping and Encapsulation Insitu. Capping and encapsulation will be pursuant to Part IV.B.3(a) of Guidelines.
- d. Deep Trench Burial and Capping. Deep trench burial and capping will be pursuant to Part IV.B.3(b) of Guidelines. Attached *Figures E, F and G* depict standard types of encapsulation pits utilized by Yates. Each encapsulation trench type is designed to hold 2000 cubic yards of drill cuttings.
- e. Exemption: Yates may request an exemption on a site specific basis as provided for in 19.15.2.50 NMAC (Rule 50).

The proposed method for pit closure will be indicated on the APD as one of the above methods. Approval of the APD will constitute approval of the closure plan. No other closure plan will be submitted. Yates will notify OCD 48-hours prior to closure of pit and submit a C-144 when pit is closed.

If, due to site specific conditions encountered during the course of operations, Yates proposes to change the method of closure, a request outlining the new plan will be submitted on a C-144 for OCD approval prior to closure.

Figure A



Anchors

**Yates Petroleum
Standard Reserve Pit**

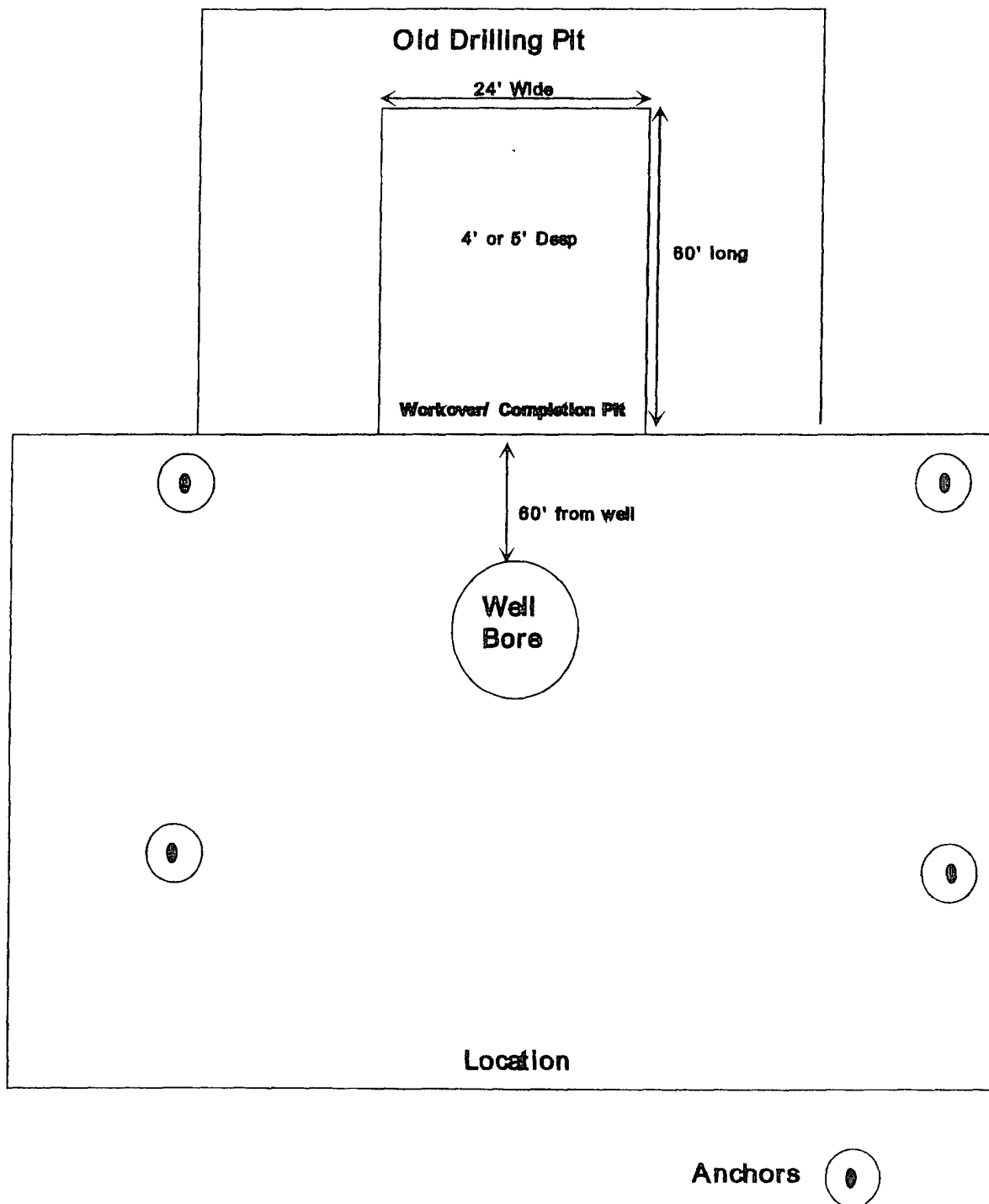
All Reserve Pits are double horse shoe.
Size varies with depth of well

12/8/04

(Not to Scale)



Figure B



Yates Petroleum
Workover/ Completion Pit Design

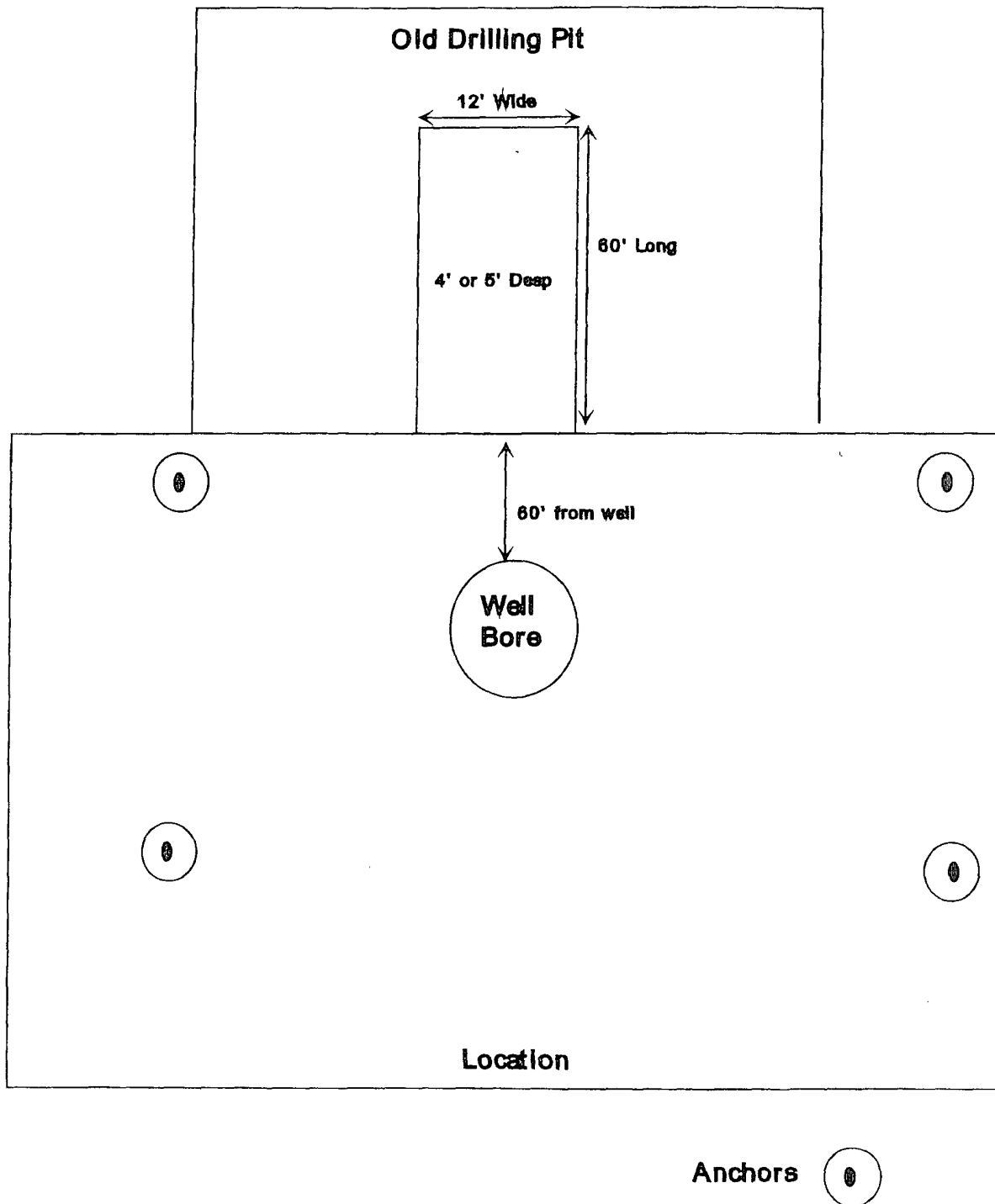
Built with Dozer

12/8/04

(Not to Scale)



Figure C



Yates Petroleum
Workover/ Completion Pit Design

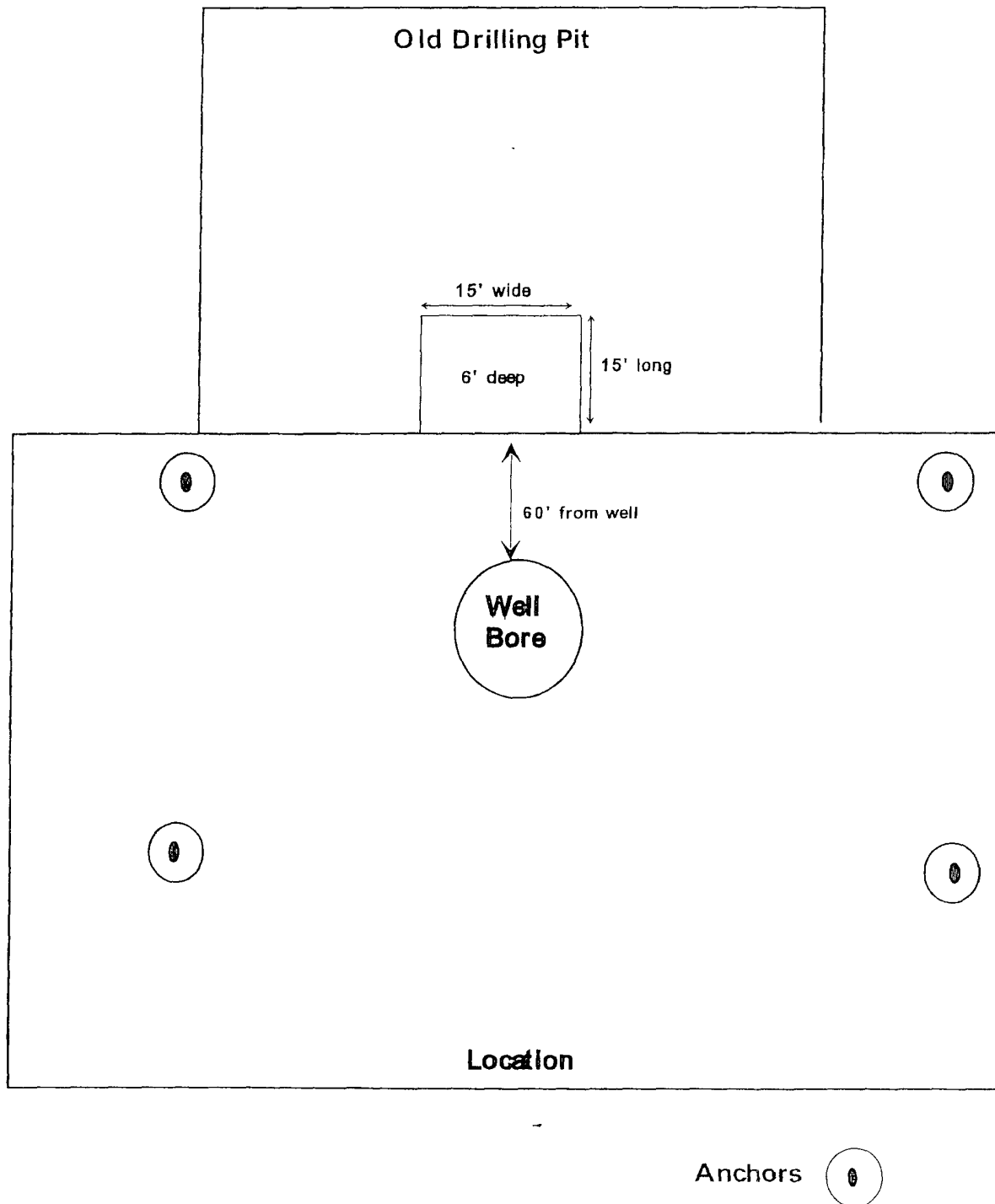
Built with Backhoe

12/8/04



(Not to Scale)

Figure D



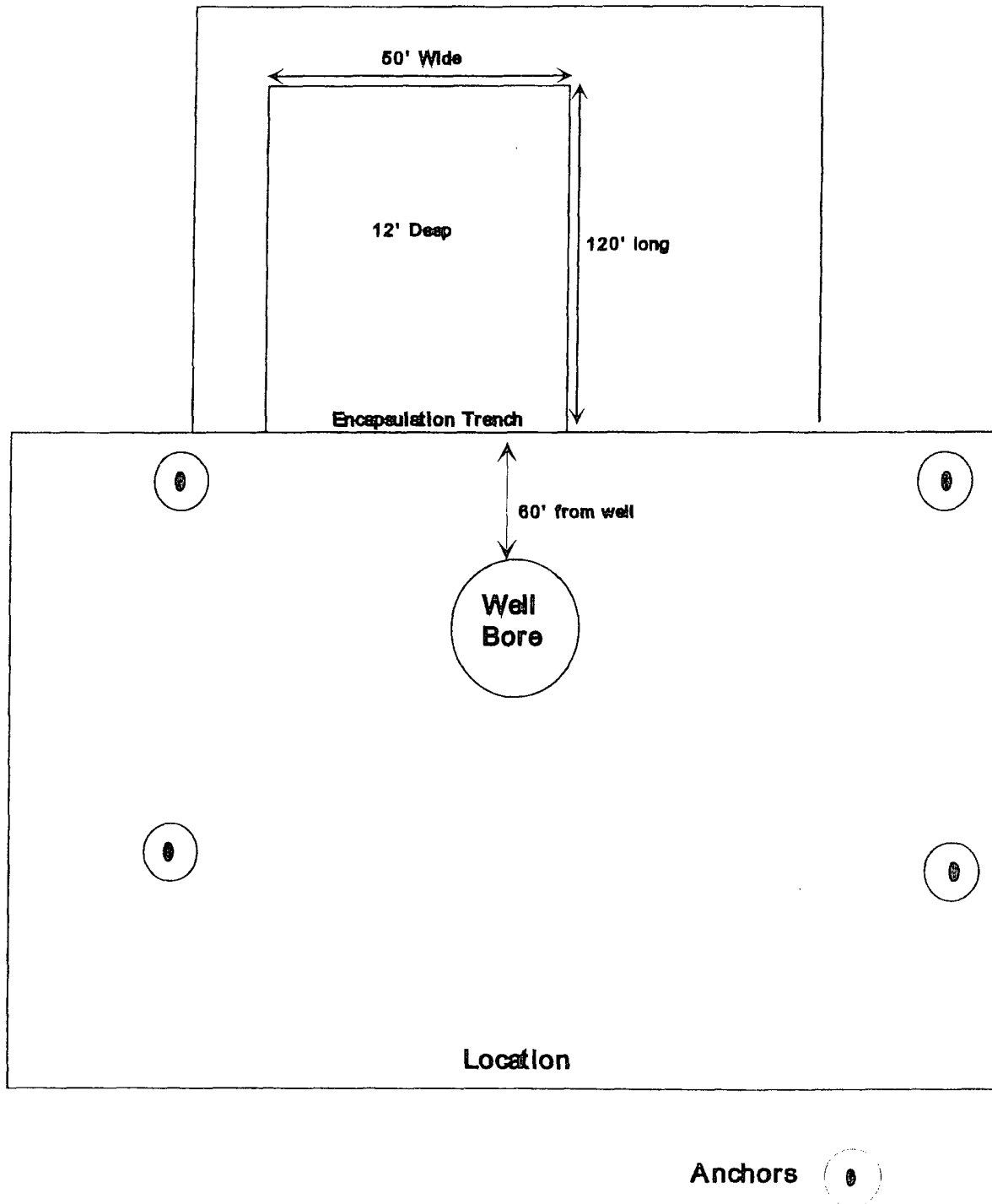
Yates Petroleum
Workover/ Completion Pit Design
Built with Backhoe

12/8/04



(Not to Scale)

Figure E



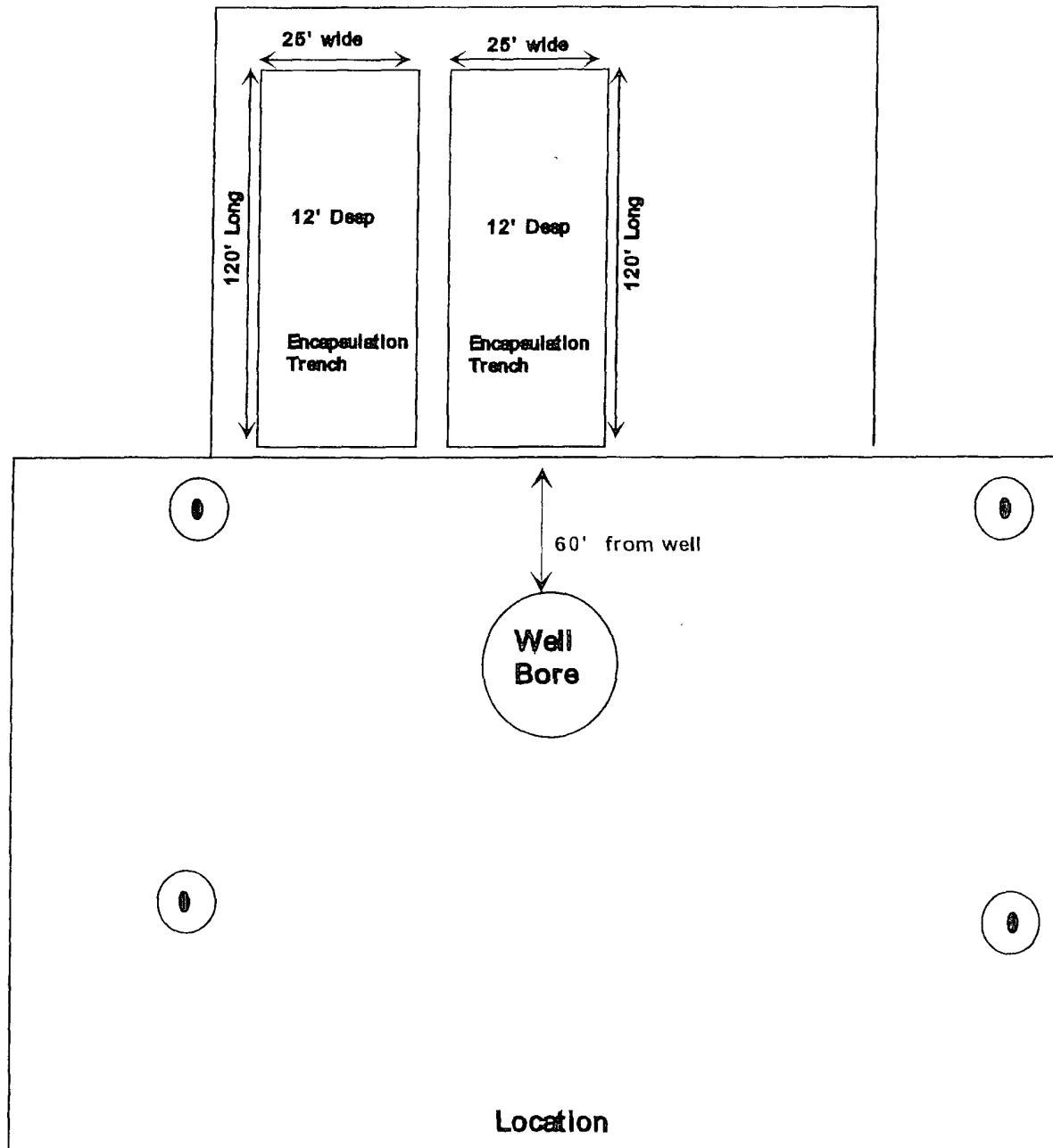
Yates Petroleum
Deep Trench Encapsulation

12/8/04



(Not to Scale)

Figure F



Anchors

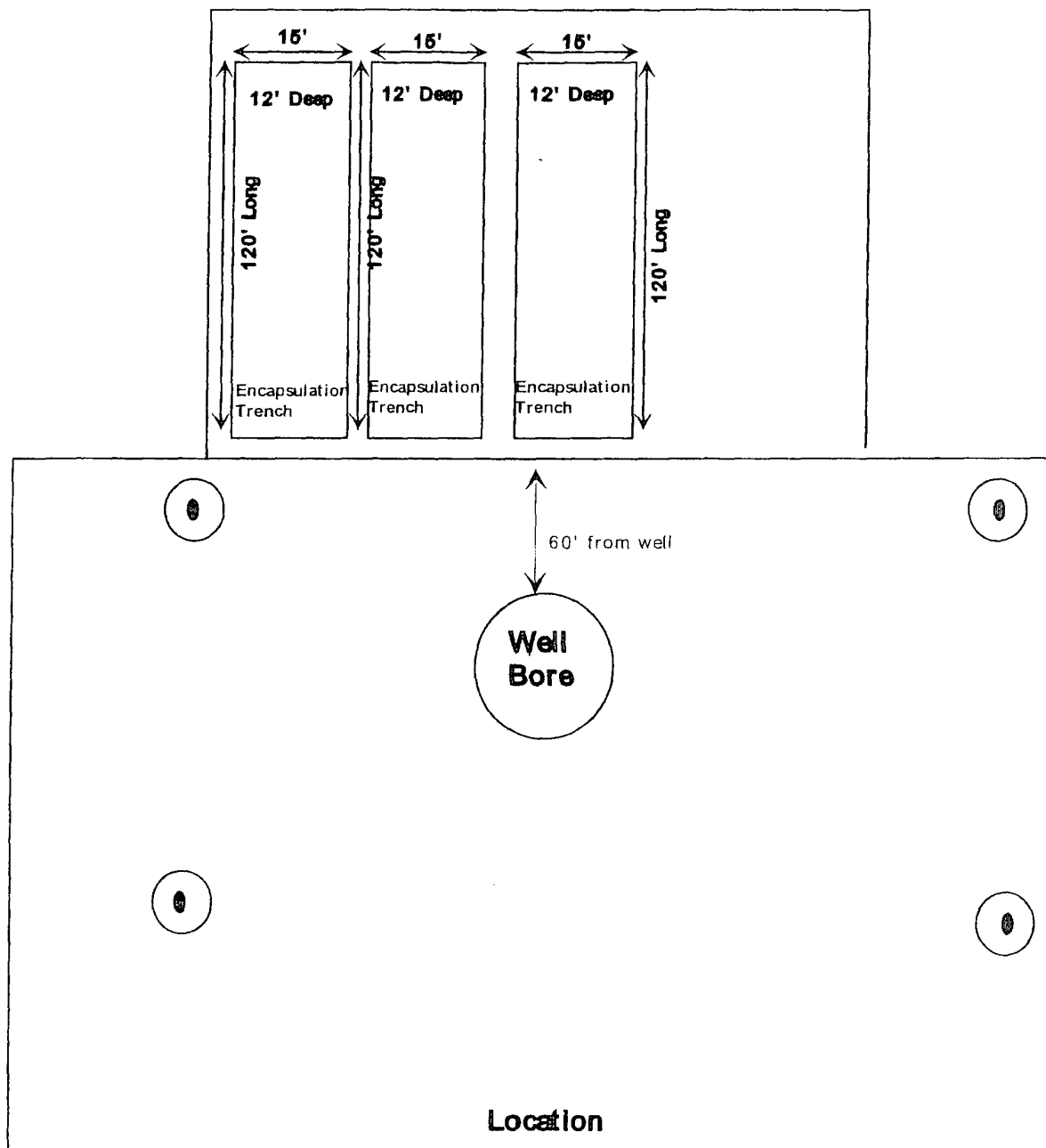
Yates Petroleum
Deep Trench Encapsulation
Built with Backhoe

12/8/04

(Not to Scale)



Figure G



Anchors

Yates Petroleum
Deep Trench Encapsulation

12/8/04



(Not to Scale)



NEW MEXICO ENERGY, MINERALS and NATURAL RESOURCES DEPARTMENT

BILL RICHARDSON

Governor

Joanna Prukop

Cabinet Secretary

Mark E. Fesmire, P.E.

Director

Oil Conservation Division

4 January 2005

Mr. Dan Dolan
Yates Petroleum Corporation
105 South Fourth Street
Artesia, New Mexico 88210

RE: General Plan – John A. Yates Jr., Oil Producer

Dear Mr. Dolan:

The Artesia District of the Oil Conservation Division on 30 December, 2004 received a request for "John A. Yates Jr., Oil Producer" to be covered by the General Permit submitted by you on 20 December, 2004. This request is approved. John A. Yates Jr., Oil Producer will be added to the Yates Companies that are covered by the Plan.

Van Barton
Field Rep. II

MARTIN YATES, III
1912 - 1985
FRANK W. YATES
1936 - 1986



105 SOUTH FOURTH STREET
ARTESIA, NEW MEXICO 88210-2118
TELEPHONE (505) 748-1471

S. P. YATES
CHAIRMAN OF THE BOARD
JOHN A. YATES
PRESIDENT
PEYTON YATES
EXECUTIVE VICE PRESIDENT
RANDY G. PATTERSON
SECRETARY
DENNIS G. KINSEY
TREASURER

Mr. Van Barton
Oil Conservation Division
State of New Mexico
1301 West Grand Ave.
Artesia, NM 88210

RECEIVED
DEC 30 2004
MEXICAN PETROLEUM

December 30, 2004

**Re: General Plan
Drilling, Workover, and Blowdown Pit Design and closure.**

Dear Van,

As you know Yates submitted and received approval of a general plan for opening and closing of drilling and workover pits on December 20, 2004, this was an amended plan, submitted for clarification and simplification of the original plan, approved by you on April 15, 2004.

We are requesting the addition of "John A. Yates Jr., Oil Producer", to the Yates Companies on the approved plan.

Please contact me at 505-748-4181 if you have any questions or need further information.

Sincerely,

Daniel W. Dolan CWC
Environmental Regulatory Agent



MYCO INDUSTRIES, INC.
OIL PRODUCERS
POST OFFICE BOX 840
ARTESIA, NEW MEXICO 88211-0840
Phone (505) 748-1471

February 22, 2005

RECEIVED

FEB 24 2005

ODD-ARTESIA

New Mexico Oil Conservation Division
Bryan Arant
1301 W. Grand
Artesia, New Mexico 88210

Re: Myco Industries, Inc.
Throckmorton 32 State Com #1
H2S Contingency Plan

Dear Mr. Arrant:

Sources at Myco Industries, Inc. have relayed information to me that they believe there will not be enough H2S found from the surface through the Morrow Formation to meet the OCD's minimum requirements for the submission of a contingency plan per Rule 118.

Please note that I have enclosed our Contingency Plan for this well based on a remote chance that Rule 118 might become applicable.

Thank you,

MYCO INDUSTRIES, INC.

A.N. Muncy, PELS
Operations/Engineering Manager

ANM:hp
Enclosure

Myco Industries, Inc.

**423 W. Main Street
Artesia, NM 88210**

Hydrogen Sulfide (H₂S) Contingency Plan

For

Throckmorton 32 State Com #1

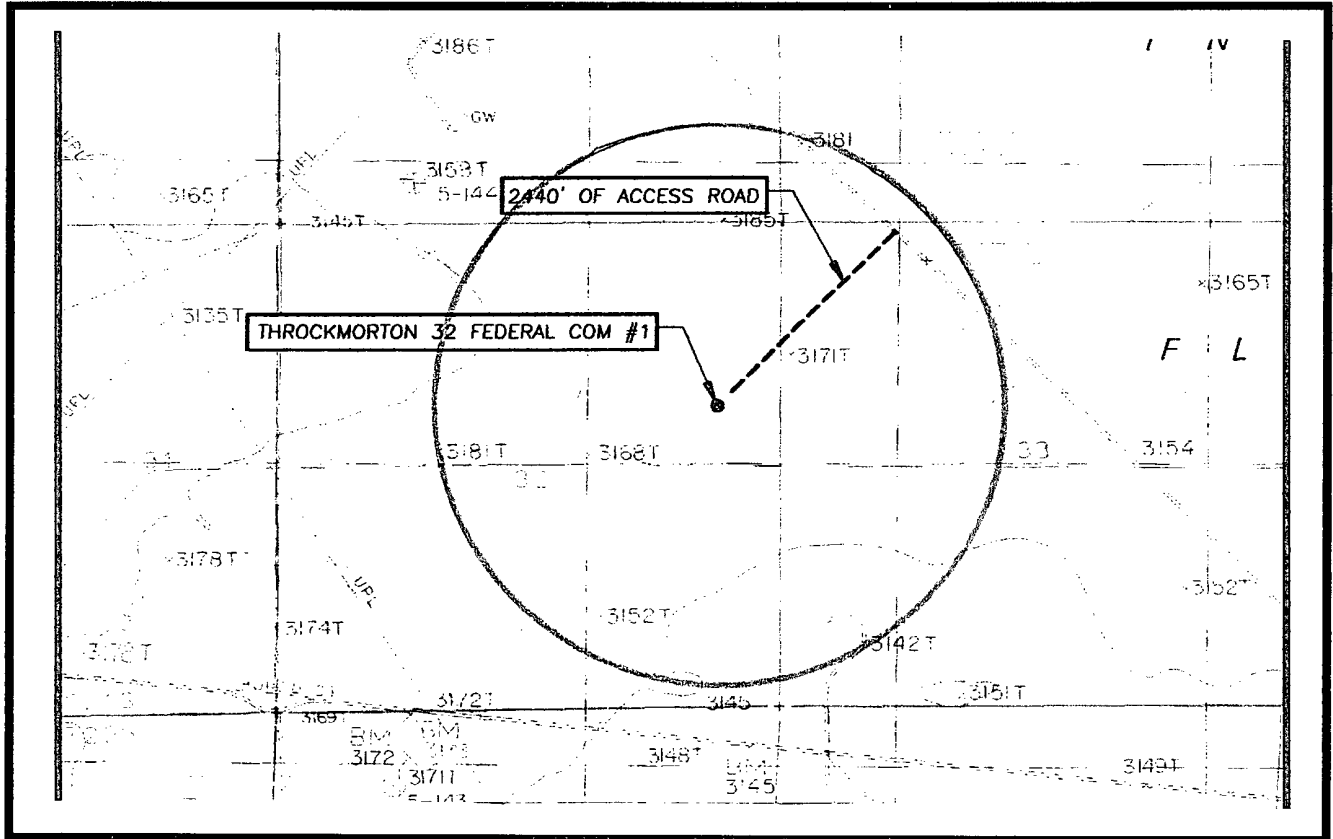
**1980' FNL & 660' FEL
Sec-32, T-21S, R-28E
Eddy County NM**

RECEIVED

FEB 24 2005

ARTEZIA

This is an open drilling site. H₂S monitoring equipment and emergency response equipment will be used within 500' of zones known to contain H₂S, including warning signs, wind indicators and H₂S monitor.



Assumed 100 ppm ROE = 3000'
100 ppm H2S concentration shall trigger activation of this plan.

Emergency Procedures

In the case of a release of gas containing H₂S, the first responder(s) must isolate the area and prevent entry by other persons into the 100 ppm ROE. Additionally the first responder(s) must evacuate any public places encompassed by the 100 ppm ROE. First responder(s) must take care not to injure themselves during this operation. Company and/or local officials must be contacted to aid in this operation. Evacuation of the public should be beyond the 100 ppm ROE.

All responders must have training in the detection of H₂S, measures for protection against the gas, equipment used for protection and emergency response. Additionally, responders must be equipped with H₂S monitors and air packs in order to control the release. Use the "buddy system" to ensure no injuries during the response.

Ignition of Gas Source

Should control of the well be considered lost and ignition considered, take care to protect against exposure to Sulfur Dioxide (SO₂). Intentional ignition must be coordinated with the NMOCD and local officials. Additionally the NM State Police may become involved. NM State Police shall be the Incident Command on scene of any major release. Take care to protect downwind whenever there is an ignition of the gas

Characteristics of H₂S and SO₂

Common Name	Chemical Formula	Specific Gravity	Threshold Limit	Hazardous Limit	Lethal Concentration
Hydrogen Sulfide	H ₂ S	1.189 Air = 1	10 ppm	100 ppm/hr	600 ppm
Sulfur Dioxide	SO ₂	2.21 Air = 1	2 ppm	N/A	1000 ppm

Contacting Authorities

Myco personnel must liaison with local and state agencies to ensure a proper response to a major release. Additionally, the OCD must be notified of the release as soon as possible but no later than 4 hours. Agencies will ask for information such as type and volume of release, wind direction, location of release, etc. Be prepared with all information available. The following call list of essential and potential responders has been prepared for use during a release. Myco Company response must be in coordination with the State of New Mexico's 'Hazardous Materials Emergency Response Plan' (HMER)

Myco Industries, Inc. Phone Numbers

Myco Office(505) 748-4280
Nelson Muncy/Operations Engineering Manager.....(505) 748-4289
.....(505) 308-3502
Gene Lee/Contract Engineer.....(505) 622-7355
.....(505) 626-4292
Artesia Answering Service(505) 748-4302
(During non-office hours)

Agency Call List

Eddy County (505)

Artesia

State Police..... 746-2703
City Police..... 746-2703
Sheriff's Office 746-9888
Ambulance 911
Fire Department 746-2701
LEPC (Local Emergency Planning Committee) 746-2122
NMOCD..... 748-1283

Carlsbad

State Police..... 885-3137
City Police..... 885-2111
Sheriff's Office 887-7551
Ambulance 911
Fire Department 885-2111
LEPC (Local Emergency Planning Committee)..... 887-3798
US Bureau of Land Management.....887-6544

New Mexico Emergency Response Commission (Santa Fe) (505)476-9600
24 HR(505) 827-9126
New Mexico State Emergency Operations Center.....(505) 476-9635
National Emergency Response Center (Washington, DC) ...(800) 424-8802

Other

Boots & Coots IWC1-800-256-9688 or (281) 931-8884
Cudd Pressure Control.....(915) 699-0139 or (915) 563-3356
Halliburton(505) 746-2757
B. J. Services.....(505) 746-3569

Flight For Life -4000 24th St, Lubbock, TX(806) 743-9911
Aerocare -Rr 3 Box 49f, Lubbock, TX(806) 747-8923
Med Flight Air Amb 2301 Yale Blvd SE #D3, Albuq, NM(505) 842-4433
S B Air Med Svc 2505 Clark Carr Loop SE, Albuq, NM(505) 842-4949