

DISTRICT I
1625 N. French Dr., Hobbs, NM 88240

DISTRICT II
1301 W. Grand Avenue, Artesia, NM 88210

DISTRICT III
1000 Rio Brazos Rd., Aztec, NM 87410

DISTRICT IV
1220 S. St. Francis Dr., Santa Fe, NM 87505

State of New Mexico
Energy, Minerals and Natural Resources Department

Form C-102
Revised October 15, 2009

Submit one copy to appropriate
District Office

OIL CONSERVATION DIVISION
1220 South St. Francis Dr.
Santa Fe, New Mexico 87505

WELL LOCATION AND ACREAGE DEDICATION PLAT

☐ AMENDED REPORT

API Number 30-015-38113	Pool Code 50443	Pool Name Quahada Ridge SE (Delaware)
Property Code 306407	Property Name JAMES RANCH UNIT	Well Number 124H
OGRID No. 260737	Operator Name BOPCO, L.P.	Elevation 3314'

Surface Location

UL or lot No.	Section	Township	Range	Lot Idn	Feet from the	North/South line	Feet from the	East/West line	County
F	17	23 S	31 E		2450	NORTH	1430	WEST	EDDY

Bottom Hole Location If Different From Surface

UL or lot No.	Section	Township	Range	Lot Idn	Feet from the	North/South line	Feet from the	East/West line	County
E	18	23 S	31 E		1982	NORTH	362	WEST	EDDY

Dedicated Acres 240	Joint or Infill	Consolidation Code	Order No.
------------------------	-----------------	--------------------	-----------

NO ALLOWABLE WILL BE ASSIGNED TO THIS COMPLETION UNTIL ALL INTERESTS HAVE BEEN CONSOLIDATED
OR A NON-STANDARD UNIT HAS BEEN APPROVED BY THE DIVISION

RECEIVED
APR 15 2011
NMOCD ARTESIA

1982'
330'
362'
B.H.
18
330'
1430'
3312.7'
3315.5'
3315.6'
3317.4'
17

NOTE: SURVEY CERTIFICATION IS
FOR SURFACE LOCATION ONLY

PROPOSED BOTTOM
HOLE LOCATION
Lat - N 32°18'22.48"
Long - W 103°49'28.07"
NMSPC- N 475517.60
E 698555.47
(NAD-83)

SURFACE LOCATION
Lat - N 32°18'17.97"
Long - W 103°48'13.56"
NMSPC- N 475092.566
E 704952.426
(NAD-83)

OPERATOR CERTIFICATION

I hereby certify that the information contained herein is true and complete to the best of my knowledge and belief, and that this organization either owns a working interest or unleased mineral interest in the land including the proposed bottom hole location or has a right to drill this well at this location pursuant to a contract with an owner of such a mineral or working interest, or to a voluntary pooling agreement or a compulsory pooling order heretofore entered by the division.

Valerie Truax 3/10/11
Signature Date
Valerie Truax
Printed Name

SURVEYOR CERTIFICATION

I hereby certify that the well location shown on this plat was plotted from field notes of actual surveys made by me or under my supervision, and that the same is true and correct to the best of my belief.

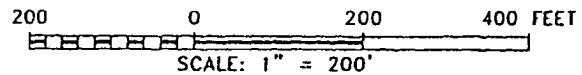
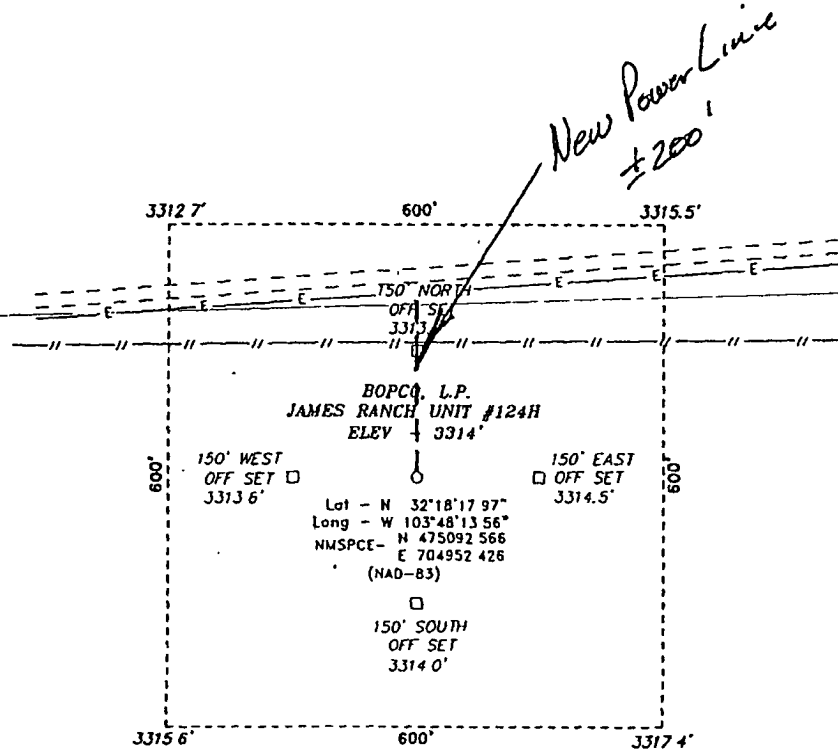
FEBRUARY 26 2010
NEW MEXICO
GARY L. JONES
Professional Surveyor
7977

Date Surveyed
Signature & Seal of Professional Surveyor

Certificate No. Gary L. Jones 7977

BASIN SURVEYS

SECTION 17, TOWNSHIP 23 SOUTH, RANGE 31 EAST, N.M.P.M.,
EDDY COUNTY, NEW MEXICO.



Directions to Location

FROM THE JUNCTION OF STATE HWY 128 AND TWIN
WELLS, GO EAST 0.1 MILES TO LEASE ROAD, ON
LEASE ROAD GO NORTHEAST 0.5 MILES TO LEASE
ROAD, ON LEASE ROAD GO NORTHWEST 0.1 THENCE
WEST 0.1 MILES TO PROPOSED LOCATION

BASIN SURVEYS P O BOX 1786-HOBBS, NEW MEXICO

W.O Number 22341 Drawn By J. SMALL

Date 03-02-2010 Disk. JMS 22341

BOPCO, L.P.

REF JAMES RANCH UNIT #124H / WELL PAD TOPO

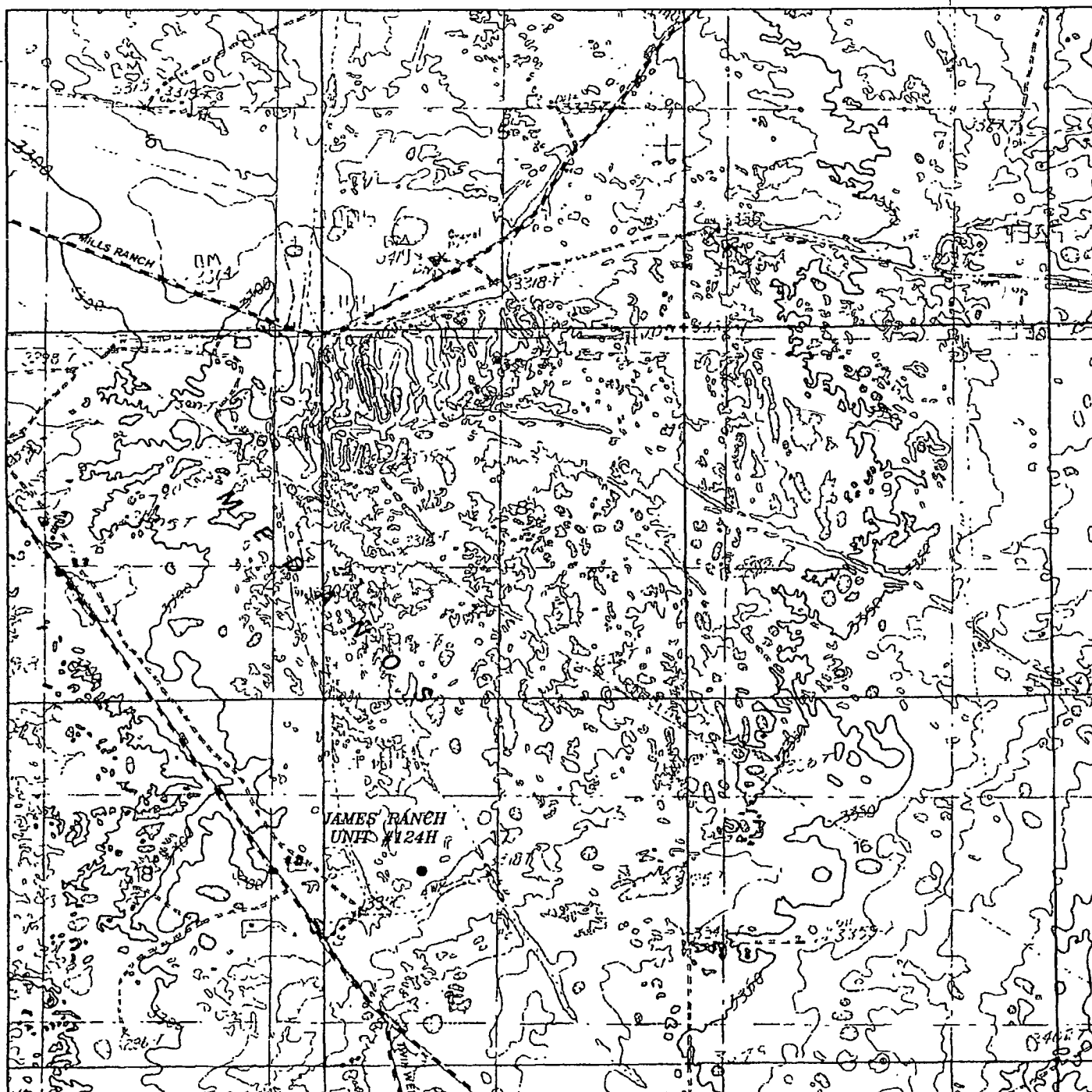
THE JAMES RANCH UNIT #124H LOCATED 2450'

FROM THE NORTH LINE AND 1430' FROM THE WEST LINE OF

SECTION 17, TOWNSHIP 23 SOUTH, RANGE 31 EAST,

N.M.P.M., EDDY COUNTY, NEW MEXICO.

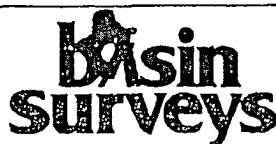
Survey Date 02-26-2010 Sheet 1 of 1 Sheets



JAMES RANCH UNIT #124H

Located 2450' FNL and 1430' FWL

Section 17, Township 23 South, Range 31 East,
N.M.P.M., Eddy County, New Mexico.



P.O. Box 1786
1120 N. West County Rd.
Hobbs, New Mexico 88241
(575) 393-7316 - Office
(575) 392-2206 - Fax
basinsurveys.com

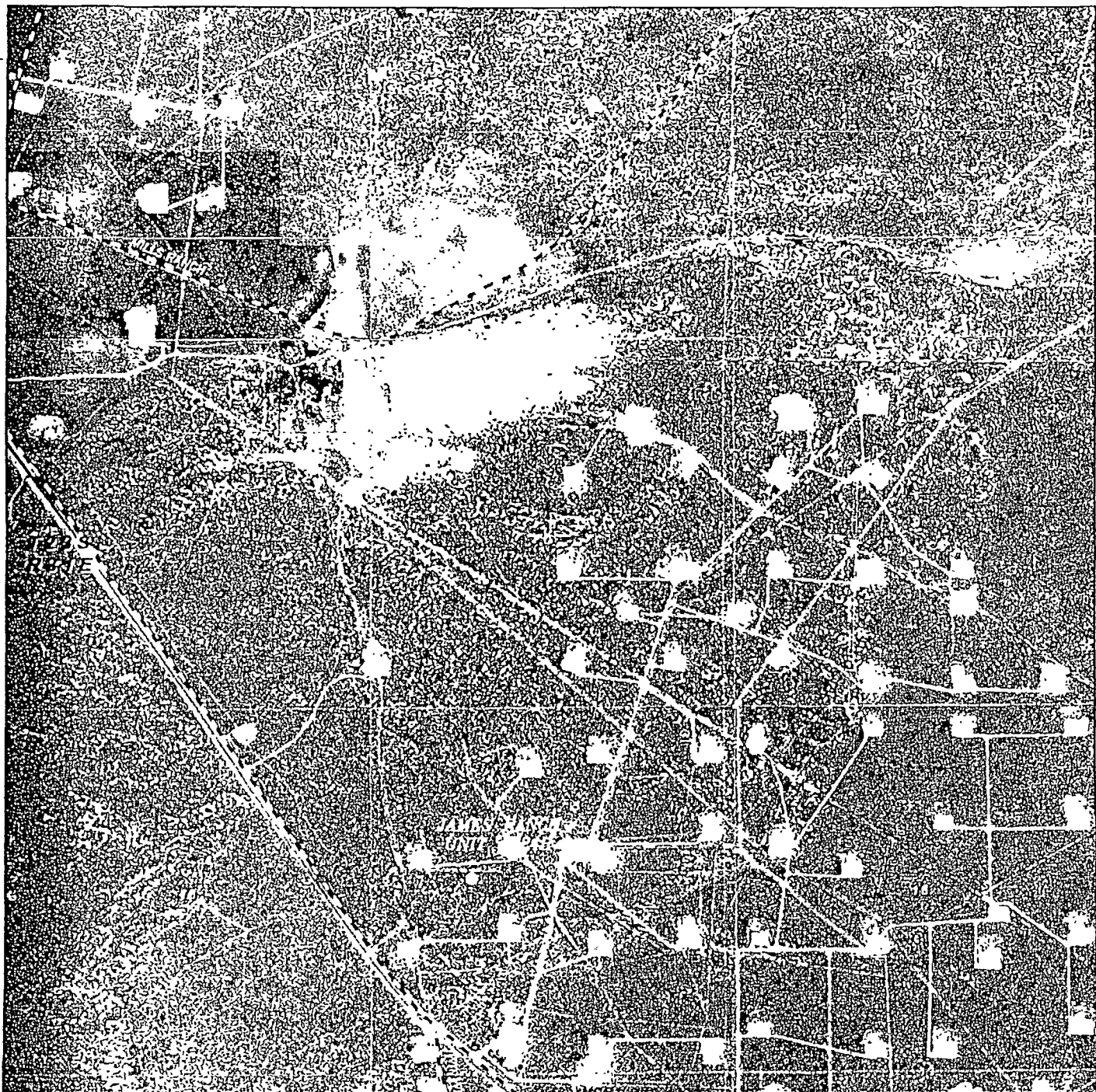
W O Number JMS 22341

Survey Date 02-26-2010

Scale 1" = 2000'

Date 03-02-2010

BOPCO, L.P.



JAMES RANCH UNIT #124H

Located 2450' FNL and 1430' FWL

Section 17, Township 23 South, Range 31 East,
N.M.P.M., Eddy County, New Mexico.



*focused on excellence
in the oilfield*

P.O. Box 1786
1170 N. West County Rd
Hobbs, New Mexico 88241
(575) 393-7316 - Office
(575) 392-2206 - Fax
basinsurveys.com

W.O. Number JMS 22341

Scale 1" = 2000'

YELLOW TINT - USA LAND
BLUE TINT - STATE LAND
NATURAL COLOR - FEE LAND

BOPCO, L.P.