

DISTRICT I
1625 N. FRENCH DR., HOBBS, NM 88240

State of New Mexico
Energy, Minerals and Natural Resources Department

[Handwritten mark]

Form C-102

Revised October 12, 2005

Submit to Appropriate District Office

State Lease - 4 Copies

Fee Lease - 3 Copies

DISTRICT II
1301 W. GRAND AVENUE, ARTESIA, NM 88210

OIL CONSERVATION DIVISION

11885 SOUTH ST. FRANCIS DR.
Santa Fe, New Mexico 87505

DISTRICT III
1000 RIO BRAZOS RD., AZTEC, NM 87410

DISTRICT IV
11885 S. ST. FRANCIS DR., SANTA FE, NM 87505

WELL LOCATION AND ACREAGE DEDICATION PLAT

☐ AMENDED REPORT

API Number 30-015 - 39157		Pool Code 96610	Pool Name Empire; Glorieta - Yeso, East
Property Code 19485 ✓	Property Name (308705) BARNSDALL FEDERAL ✓		Well Number 19 ✓
OGRID No. 873 ✓	Operator Name APACHE CORPORATION		Elevation 3528' ✓

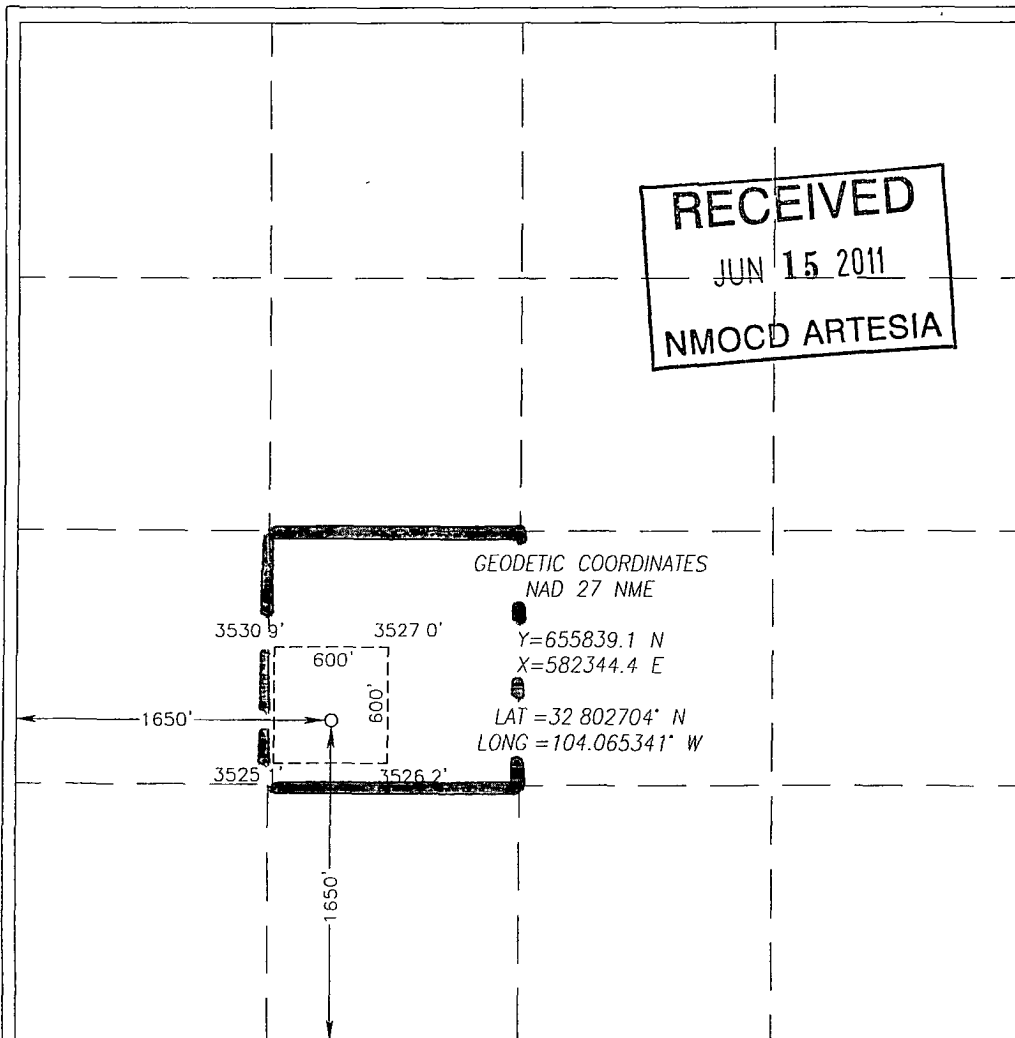
Surface Location

UL or lot No.	Section	Township	Range	Lot Idn	Feet from the	North/South line	Feet from the	East/West line	County
K	27	17-S	29-E		1650	SOUTH	1650	WEST	EDDY

Bottom Hole Location If Different From Surface

UL or lot No.	Section	Township	Range	Lot Idn	Feet from the	North/South line	Feet from the	East/West line	County
Dedicated Acres 40	Joint or Infill	Consolidation Code	Order No.						

NO ALLOWABLE WILL BE ASSIGNED TO THIS COMPLETION UNTIL ALL INTERESTS HAVE BEEN CONSOLIDATED
OR A NON-STANDARD UNIT HAS BEEN APPROVED BY THE DIVISION



RECEIVED
JUN 15 2011
NMOCD ARTESIA

OPERATOR CERTIFICATION

I hereby certify that the information herein is true and complete to the best of my knowledge and belief, and that this organization either owns a working interest or unleased mineral interest in the land including the proposed bottom hole location or has a right to drill this well at this location pursuant to a contract with an owner of such mineral or working interest, or to a voluntary pooling agreement or a compulsory pooling order heretofore entered by the division.

Sorina L. Flores 1/25/11
Signature Date
Sorina L. Flores
Printed Name

SURVEYOR CERTIFICATION

I hereby certify that the well location shown on this plat was plotted from field notes of actual surveys made by me or under my supervision, and that the same is true and correct to the best of my belief.

DECEMBER 27, 2010

Date Surveyed
Signature & Seal of Professional Surveyor
Professional Surveyor
Certificate No. GARY C. EIDSON 12641
RONALD J. EIDSON 3239