

HOBBS OGD

JUL 26 2011

Form C-102
Revised July 16, 2010

DISTRICT I
1625 N French Dr., Hobbs, NM 88240

DISTRICT II
1301 W. Grand Avenue, Artesia, NM 88210

DISTRICT III
1000 Rio Brazos Rd., Aztec, NM 87410

DISTRICT IV
1220 S. St. Francis Dr., Santa Fe, NM 87505

State of New Mexico
Energy, Minerals and Natural Resources Department

OIL CONSERVATION DIVISION RECEIVED
1220 South St. Francis Dr.
Santa Fe, New Mexico 87505

Submit one copy to appropriate
District Office

WELL LOCATION AND ACREAGE DEDICATION PLAT

AMENDED REPORT

API Number 30-015-39247	Pool Code 96718	Pool Name LOCO HILLS GLORIETA YESO
Property Code 2389	Property Name GISSLER "B"	Well Number 72
OGRID No. 03080	Operator Name BURNETT OIL COMPANY, INC.	Elevation 3679'

Surface Location

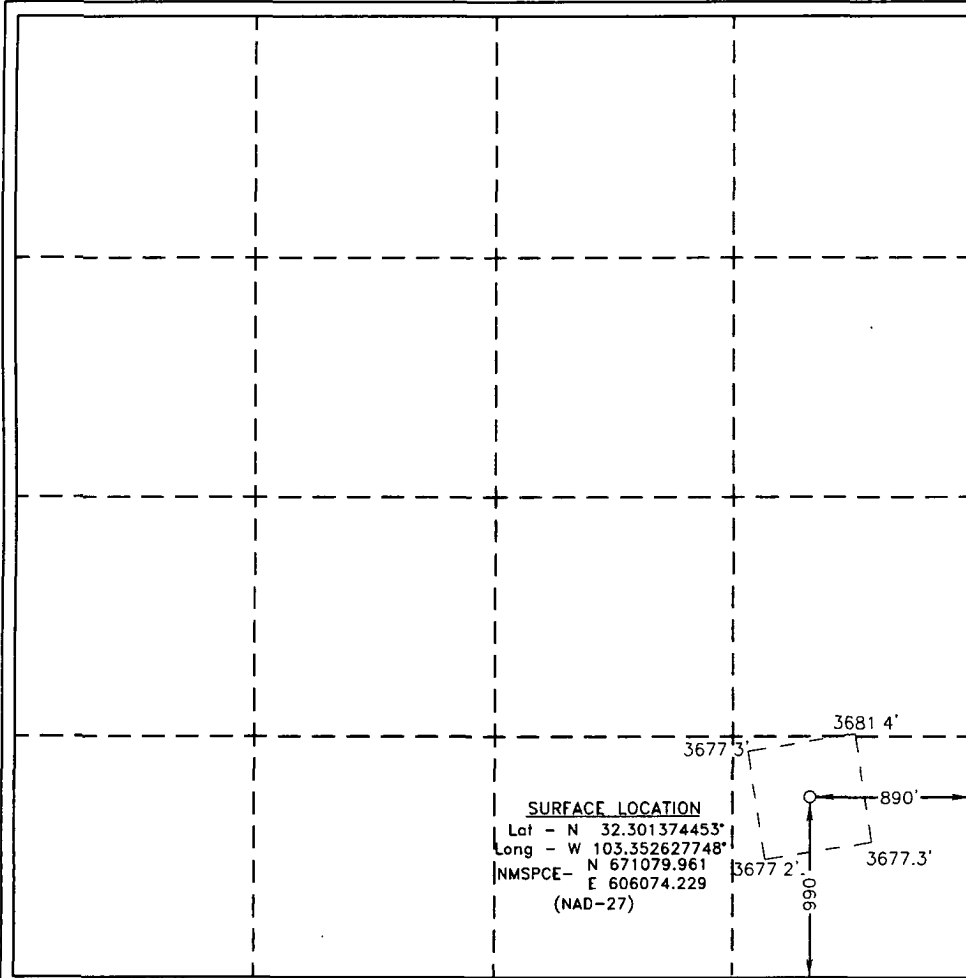
UL or lot No.	Section	Township	Range	Lot Idn	Feet from the	North/South line	Feet from the	East/West line	County
P	8	17 S	30 E		990	SOUTH	890	EAST	EDDY

Bottom Hole Location If Different From Surface

UL or lot No.	Section	Township	Range	Lot Idn	Feet from the	North/South line	Feet from the	East/West line	County

Dedicated Acres 40	Joint or Infill	Consolidation Code	Order No. per operator 6/22 JIA
------------------------------	-----------------	--------------------	---

NO ALLOWABLE WILL BE ASSIGNED TO THIS COMPLETION UNTIL ALL INTERESTS HAVE BEEN CONSOLIDATED OR A NON-STANDARD UNIT HAS BEEN APPROVED BY THE DIVISION



OPERATOR CERTIFICATION
 I hereby certify that the information contained herein is true and complete to the best of my knowledge and belief, and that this organization either owns a working interest or unleased mineral interest in the land including the proposed bottom hole location or has a right to drill this well at this location pursuant to a contract with an owner of such a mineral or working interest, or to a voluntary pooling agreement or a compulsory pooling order heretofore entered by the Division.

Mary Carter Stark
 Signature Date
 Mary Carter Stark
 Printed Name
 mstark@burnettoil.com
 Email Address

SURVEYOR CERTIFICATION
 I hereby certify that the well location shown on this plat was plotted from field notes of actual surveys made by me or under my supervision and that the same is true and correct to the best of my belief.

GARY L. JONES
 Date Surveyed
 Signature & Seal of Professional Surveyor
 24421

Certificate No. Gary L. Jones 7977
 BASIN SURVEYS 24421