

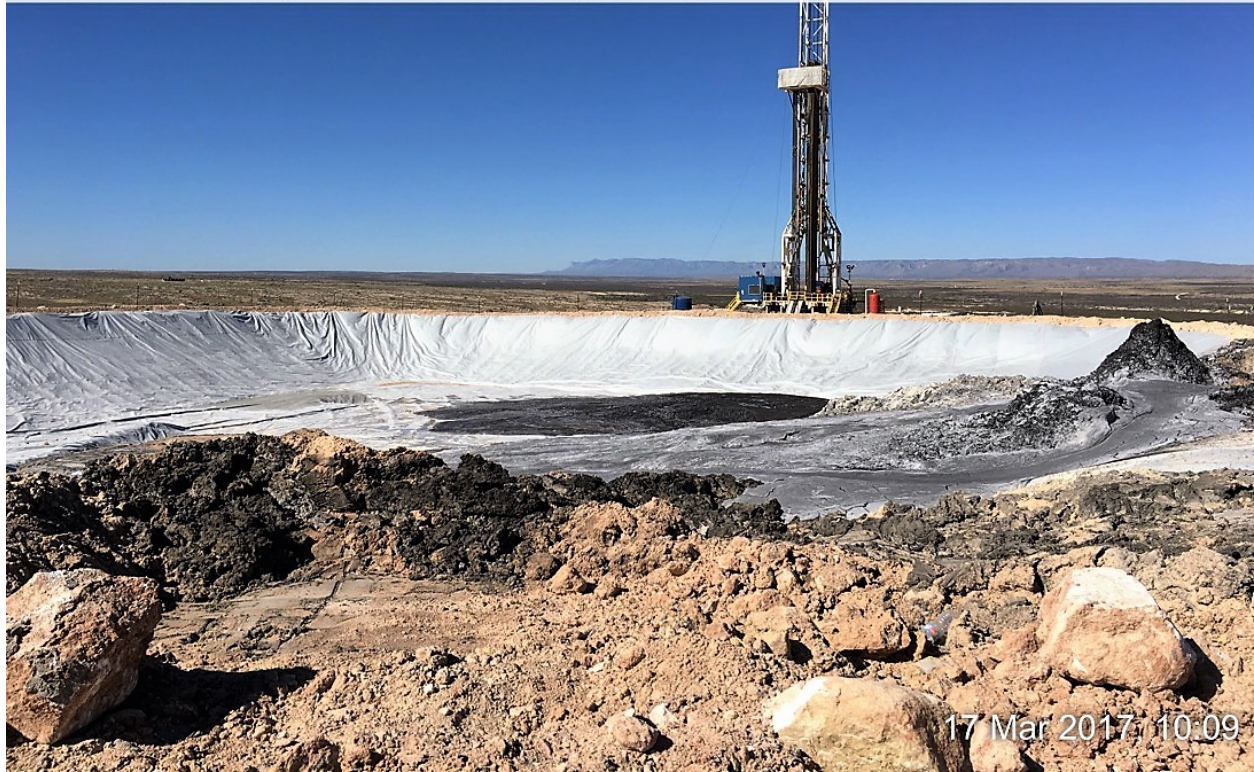
NMOCD Staff Photos

Murchison Jawbone Temporary Pit

March 17, 2017



☼ 256°W (T) ☉ 32.166245°, -104.264809° ±16.4ft ▲ 3351ft





☼ 273°W (T) ☉ 32.166245°, -104.264809° ±16.4ft ▲ 3352ft







☼ 214°SW (T)    ● 32.166245°, -104.264809° ±16.4ft    ▲ 3352ft





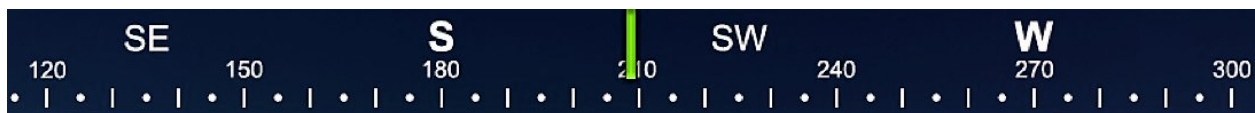


☼ 222°SW (T) ● 32.166157°, -104.264580° ±16.4ft ▲ 3361ft









☼ 221°SW (T)    ● 32.166088°, -104.264641° ±16.4ft    ▲ 3350ft



17 Mar 2017 10:11





☼ 203°S (T) ☉ 32.166088°, -104.264641° ±16.4ft ▲ 3350ft



17 Mar 2017 10:11





☼ 251°W (T) ☉ 32.165878°, -104.264633° ±16.4ft ▲ 3342ft





☼ 319°NW (T) ● 32.165726°, -104.264717° ±16.4ft ▲ 3332ft







☼ 299°NW (T) ● 32.165726°, -104.264717° ±16.4ft ▲ 3332ft



17 Mar 2017, 10:13





☉ 338°N (T) ☉ 32.165646°, -104.264740° ±16.4ft ▲ 3327ft



17 Mar 2017 10:13



W 240 W 270 NW 300 330 N 0 NE 30

☼ 333°NW (T) ● 32.165508°, -104.264740° ±16.4ft ▲ 3325ft



17 Mar 2017, 10:14



☼ 330°NW (T) ● 32.165508°, -104.264740° ±16.4ft ▲ 3325ft





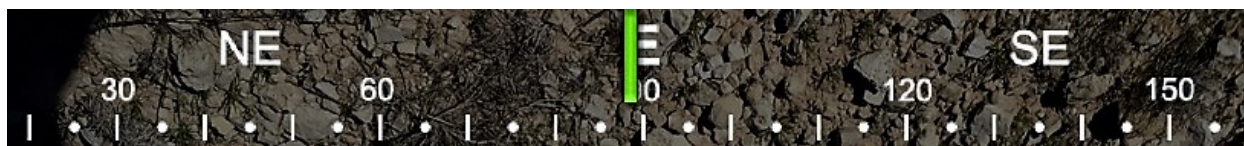


☀ 8°N (T) ● 32.165562°, -104.264931° ±16.4ft ▲ 3326ft



17 Mar 2017 10:15





☉ 89°E (T) ☉ 32.165562°, -104.264931° ±16.4ft ▲ 3326ft



17 Mar 2017, 10:15





☉ 26°NE (T) ● 32.165363°, -104.265190° ±16.4ft ▲ 3319ft



17 Mar 2017, 10:16





☀ 12°N (T) ● 32.165363°, -104.265190° ±16.4ft ▲ 3319ft



17 Mar 2017, 10:16





☼ 245°SW (T) ● 32.165356°, -104.265129° ±16.4ft ▲ 3321ft



17 Mar 2017, 10:16





☼ 254°W (T) ☉ 32.165356°, -104.265129° ±16.4ft ▲ 3321ft



17 Mar 2017 10:16





☼ 261°W (T)    ● 32.165329°, -104.265129° ±16.4ft    ▲ 3320ft







☼ 279°W (T) ☉ 32.165329°, -104.265129° ±16.4ft ▲ 3320ft







☼ 271°W (T) ● 32.165329°, -104.265129° ±16.4ft ▲ 3320ft







☼ 10°N (T) ● 32.165318°, -104.265106° ±16.4ft ▲ 3320ft



17 Mar 2017, 10:17





☼ 326°NW (T) ☉ 32.165318°, -104.265106° ±16.4ft ▲ 3322ft







☼ 34°NE (T) ● 32.165516°, -104.265038° ±16.4ft ▲ 3311ft



17 Mar 2017, 10:18





☀ 9°N (T) ● 32.165768°, -104.264786° ±32.8ft ▲ 3282ft



17 Mar 2017 10:21





☼ 10°N (T) ● 32.165768°, -104.264786° ±16.4ft ▲ 3324ft



17 Mar 2017 10:21

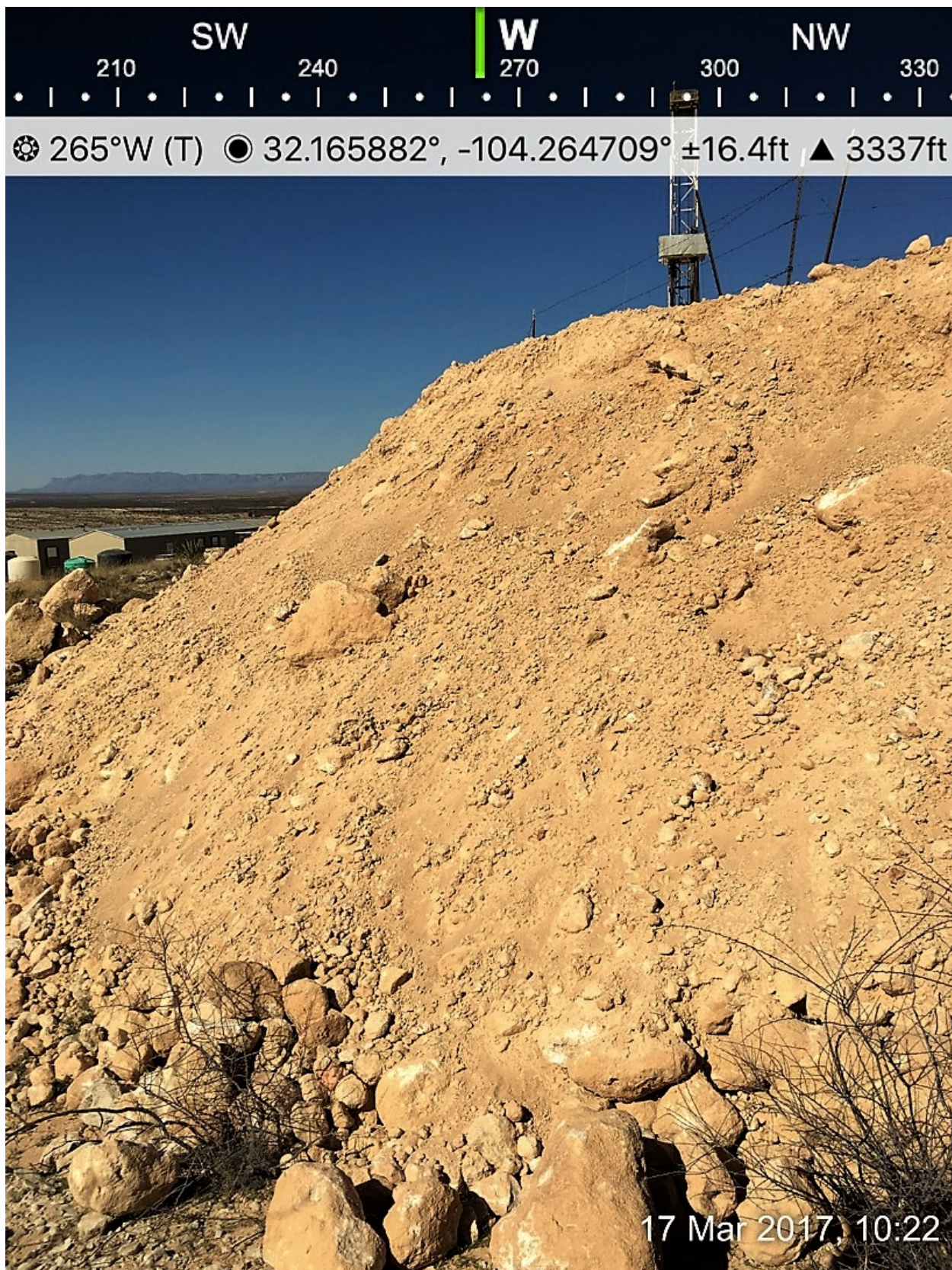




☉ 298°NW (T) ● 32.165894°, -104.264626° ±16.4ft ▲ 3324ft











☉ 224°SW (T) ● 32.165882°, -104.264732° ±16.4ft ▲ 3330ft



17 Mar 2017 10:22





☉ 267°W (T) ☉ 32.166107°, -104.264801° ±16.4ft ▲ 3358ft



17 Mar 2017, 10:24



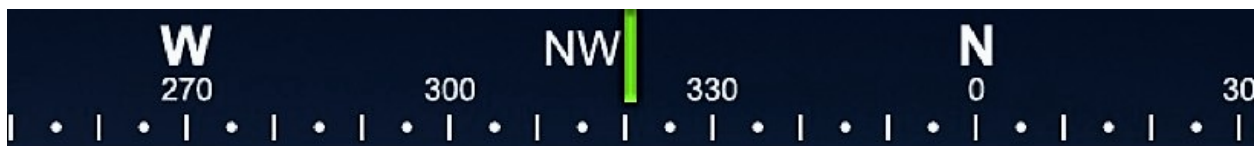


☉ 269°W (T) ● 32.165974°, -104.264763° ±32.8ft ▲ 3339ft



17 Mar 2017, 10:24





☉ 321°NW (T) ● 32.166084°, -104.264740° ±16.4ft ▲ 3332ft



17 Mar 2017, 10:28





☉ 321°NW (T) ● 32.166100°, -104.264801° ±16.4ft ▲ 3342ft



17 Mar 2017, 10:28





☉ 333°NW (T) ● 32.166061°, -104.264801° ±16.4ft ▲ 3341ft

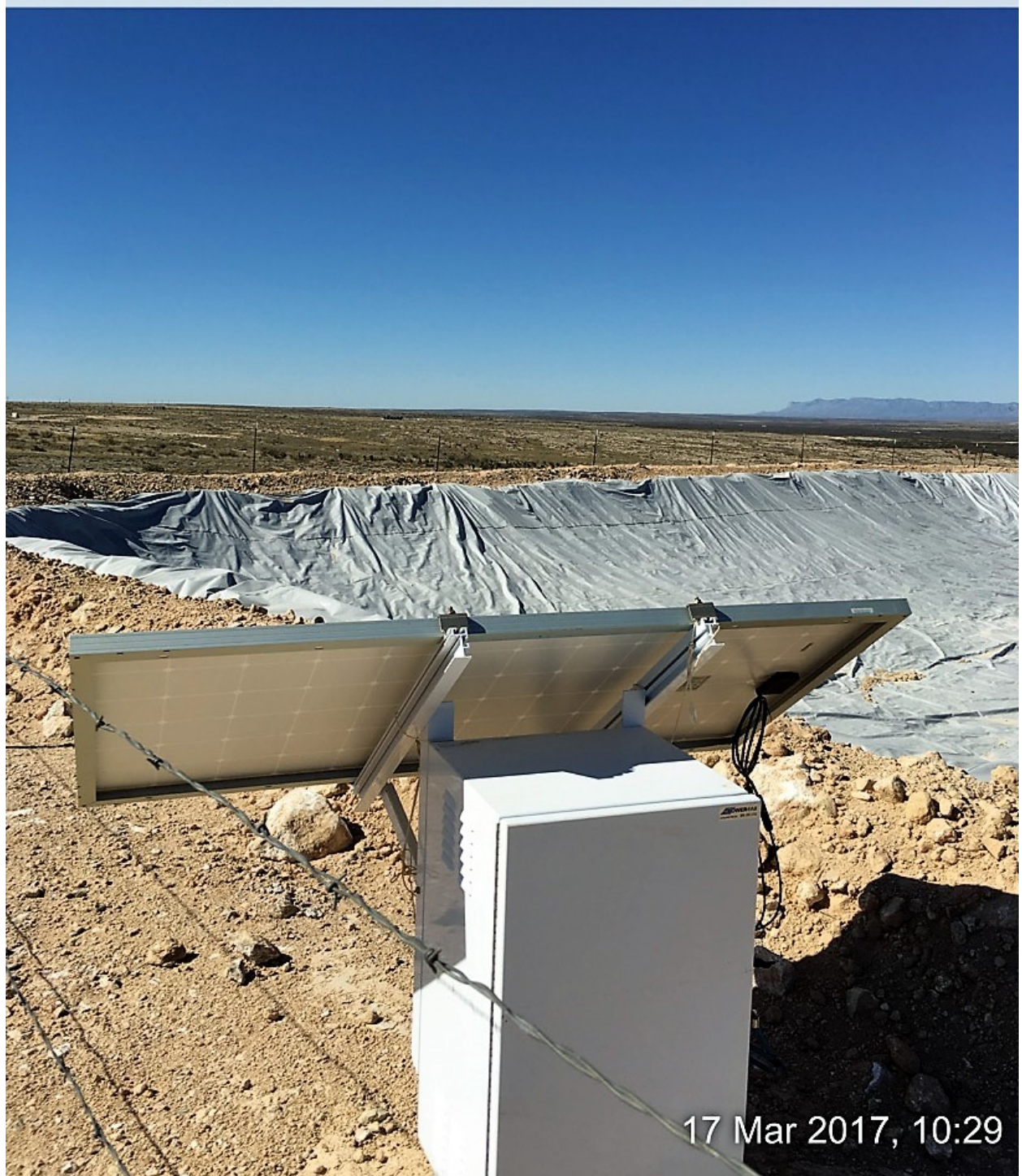


17 Mar 2017, 10:28





☼ 229°SW (T)    ● 32.166023°, -104.264801° ±16.4ft    ▲ 3345ft











☼ 176°S (T) ☉ 32.165806°, -104.264786° ±16.4ft ▲ 3390ft







☉ 237°SW (T) ☉ 32.165821°, -104.264832° ±16.4ft ▲ 3366ft







☉ 249°W (T)    ● 32.165821°, -104.264832° ±16.4ft    ▲ 3366ft



17 Mar 2017, 10:36





☼ 240°SW (T) ☉ 32.165836°, -104.264832° ±16.4ft ▲ 3366ft



17 Mar 2017, 10:36





☀ 246°SW (T)    📍 32.165833°, -104.264908° ±16.4ft    ▲ 3358ft

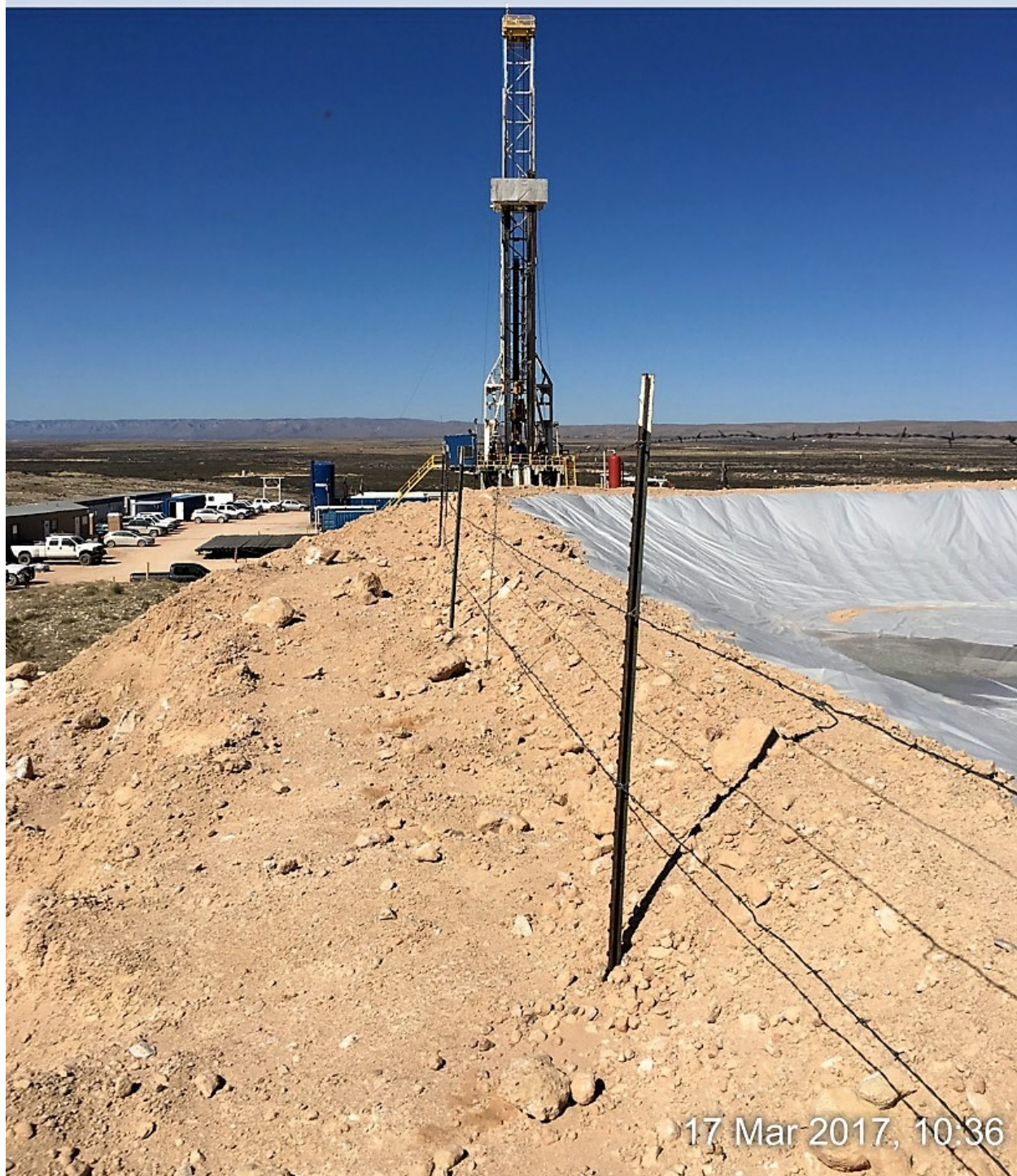


17 Mar 2017, 10:36





☉ 276°W (T) ● 32.165833°, -104.264908° ±16.4ft ▲ 3359ft







☼ 330°NW (T) ☉ 32.165836°, -104.264908° ±16.4ft ▲ 3359ft











☉ 30°NE (T) ● 32.166958°, -104.264458° ±16.4ft ▲ 3361ft







☀ 25°NE (T) ● 32.166981°, -104.264496° ±16.4ft ▲ 3343ft



17 Mar 2017, 10:41



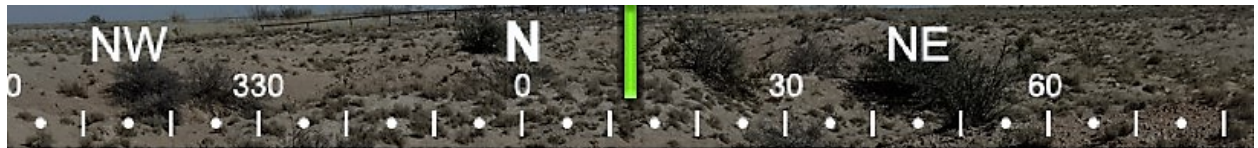


☼ 20°N (T) ● 32.167194°, -104.264542° ±16.4ft ▲ 3337ft



17 Mar 2017 10:41





☉ 13°N (T) ● 32.167233°, -104.264572° ±16.4ft ▲ 3335ft



17 Mar 2017, 10:42





☉ 337°NW (T) ● 32.167248°, -104.264595° ±16.4ft ▲ 3334ft



17 Mar 2017, 10:42





☉ 238°SW (T) ● 32.167240°, -104.264595° ±16.4ft ▲ 3335ft



17 Mar 2017 10:42





☼ 255°W (T)    ● 32.167240°, -104.264595° ±16.4ft    ▲ 3334ft







⊗ 267°W (T) ● 32.166073°, -104.263573° ±16.4ft ▲ 3354ft







☼ 258°W (T) ● 32.166073°, -104.263573° ±16.4ft ▲ 3354ft



17 Mar 2017, 10:48





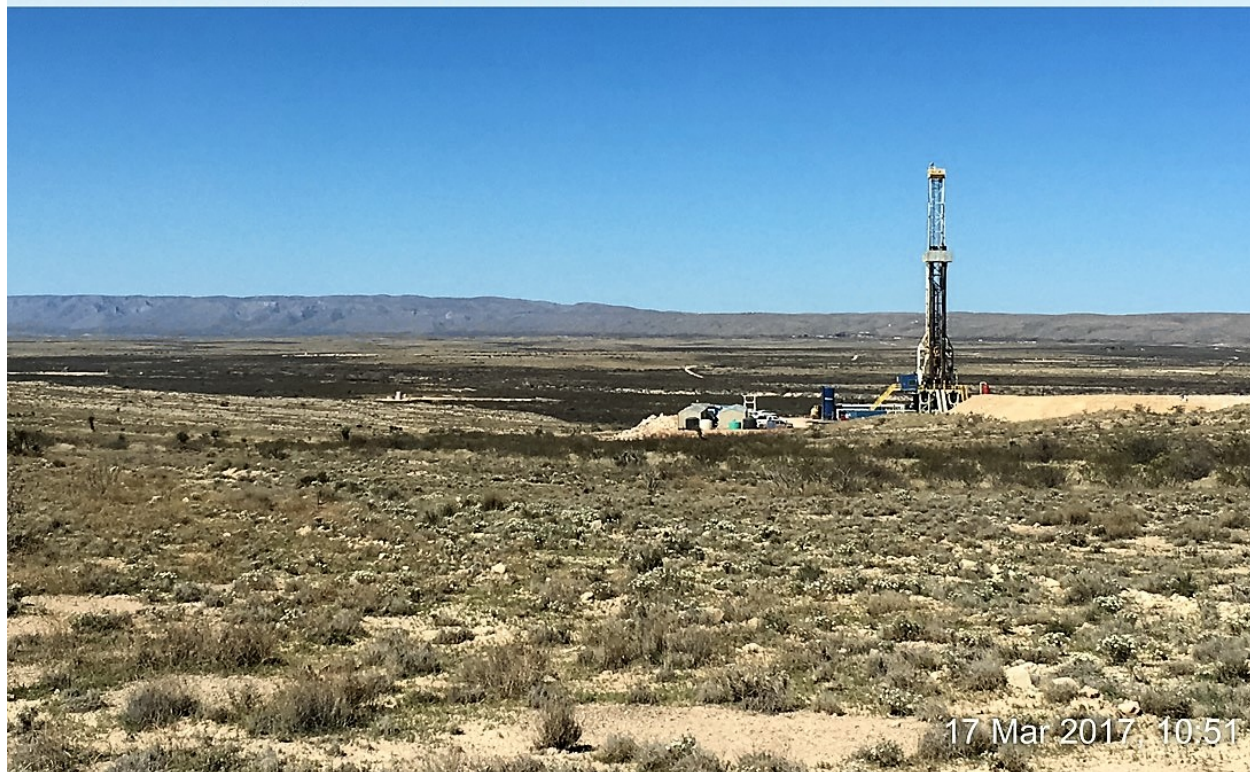
☼ 186°S (T) ● 32.165211°, -104.261452° ±16.4ft ▲ 3388ft







☼ 147°SE (T)    ● 32.165211°, -104.261452° ±16.4ft    ▲ 3384ft







⊙ 145°SE (T) ● 32.165211°, -104.261452° ±16.4ft ▲ 3362ft



17 Mar 2017, 10:51





☼ 142°SE (T)    ● 32.165257°, -104.261452° ±16.4ft    ▲ 3354ft

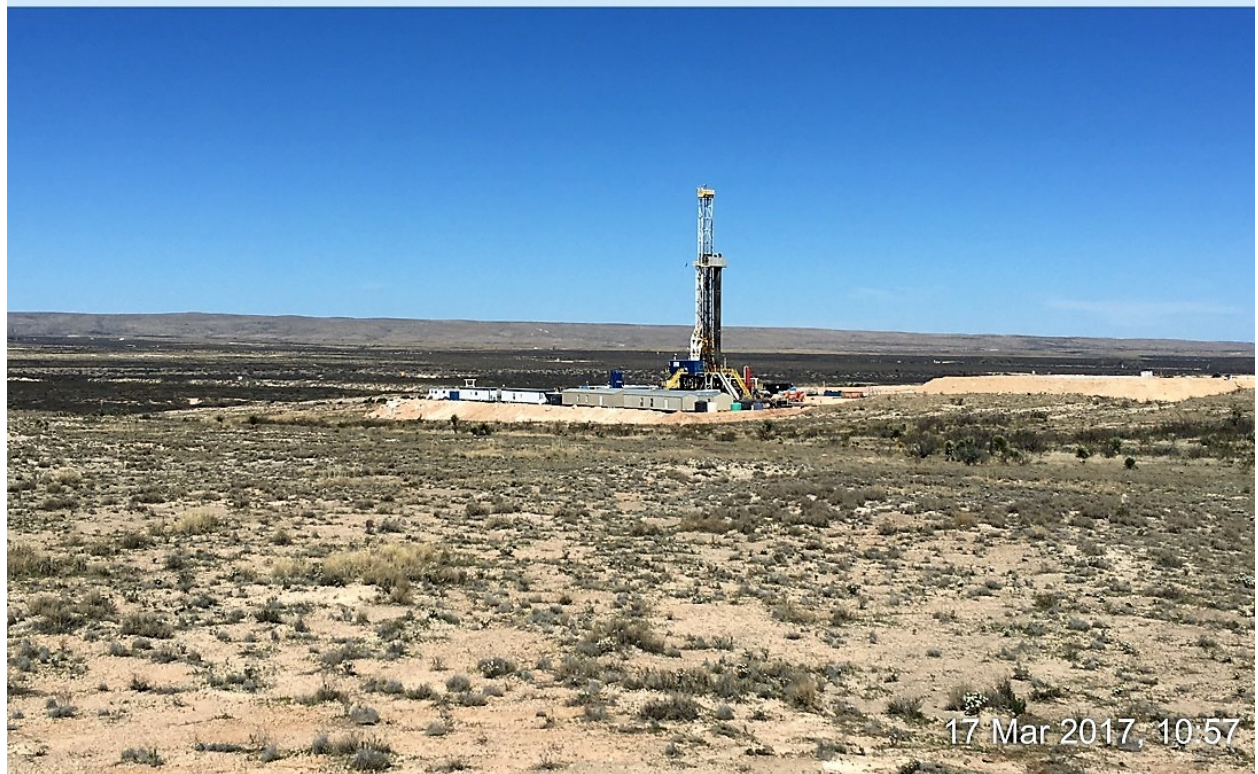


17 Mar 2017, 10:52





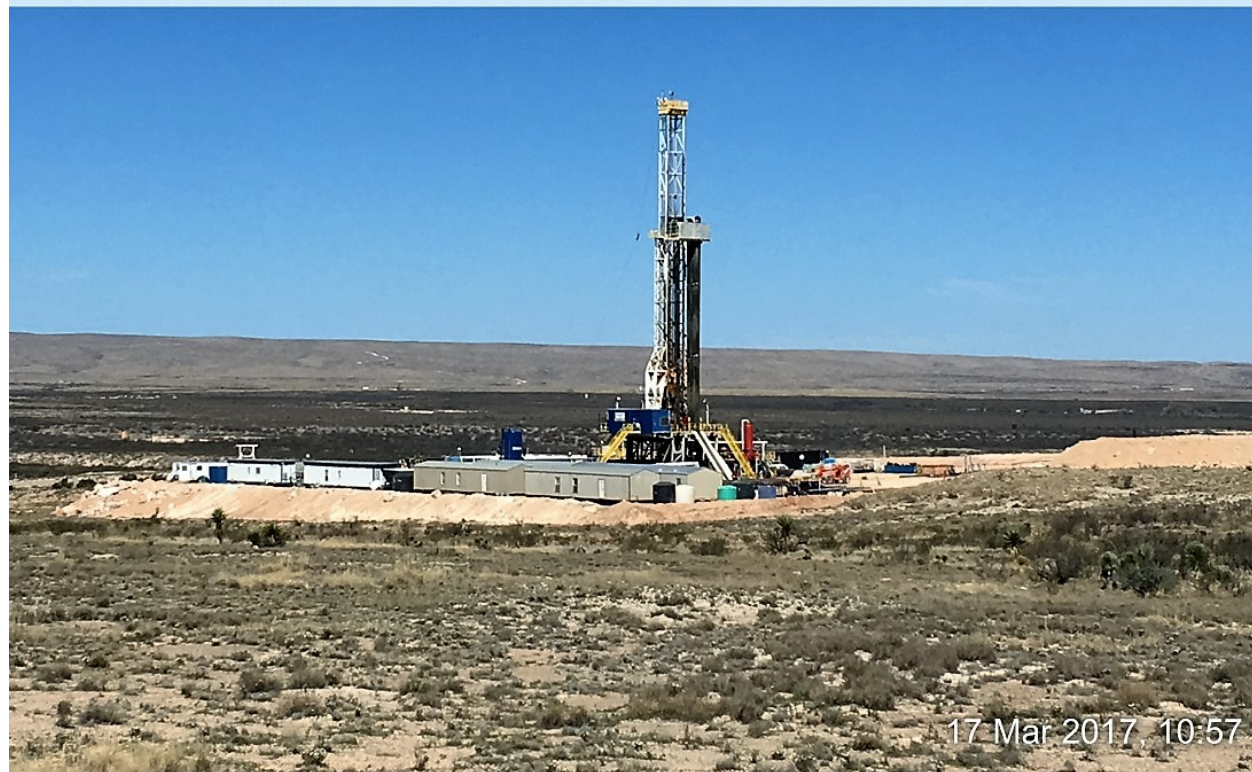
☼ 310°NW (T)    ● 32.163696°, -104.263145° ±16.4ft    ▲ 3347ft







☼ 314°NW (T) ● 32.163654°, -104.263123° ±16.4ft ▲ 3348ft

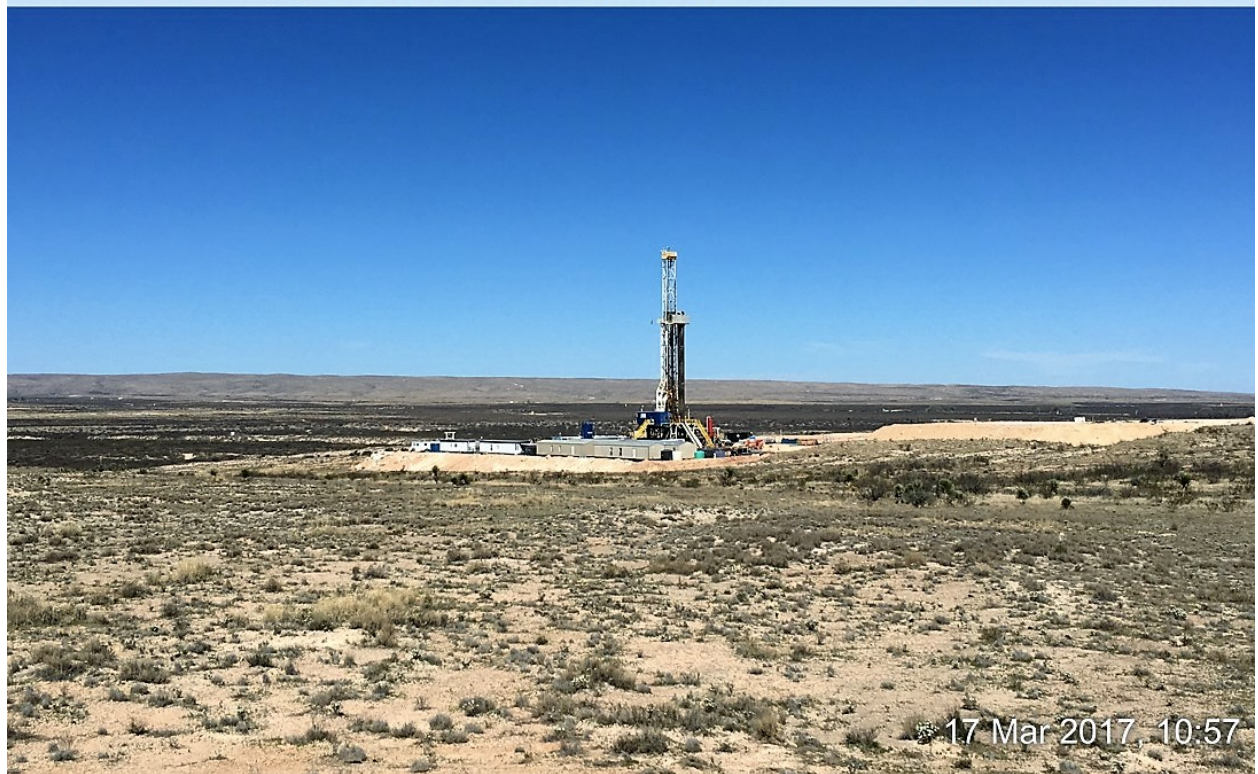


17 Mar 2017, 10:57





☼ 216°SW (T)    ● 32.163654°, -104.263123° ±16.4ft    ▲ 3348ft







⊗ 312°NW (T)    ● 32.163807°, -104.263000° ±16.4ft    ▲ 3308ft

