

UNITED STATES
DEPARTMENT OF THE INTERIOR
BUREAU OF LAND MANAGEMENT

OCD-ARTESIA

FORM APPROVED
OMB No. 1004-0135
Expires January 31, 2004

SUNDRY NOTICES AND REPORTS ON WELLS
Do not use this form for proposals to drill or to re-enter an abandoned well. Use Form 3160-3 (APD) for such proposals.

SUBMIT IN TRIPLICATE - Other instructions on reverse side

1. Type of Well

☒ Oil Well ☐ Gas Well ☐ Other

2. Name of Operator

Mewbourne Oil Company 14744

3a. Address

PO Box 5270 Hobbs, NM 88240

3b. Phone No. (include area code)

575-393-5903

4. Location of Well (Footage, Sec., T, R., M., or Survey Description)

1650' FSL & 2290' FWL, Sec 24-T19S-R25E Unit K (SL) ✓

5. Lease Serial No.

SHL Fee & NM-118696 BHL

6. If Indian, Allottee or Tribe Name

7. If Unit or CA/Agreement, Name and/or No

8. Well Name and No.

Wyatt Draw 24-35 NF Fed Com #1H ✓

9. API Well No.

30-015-38637 ✓

10. Field and Pool, or Exploratory Area

N Seven Rivers Glorieta Yeso

11. County or Parish, State

Eddy County, NM

12. CHECK APPROPRIATE BOX(ES) TO INDICATE NATURE OF NOTICE, REPORT, OR OTHER DATA

TYPE OF SUBMISSION

TYPE OF ACTION

☐ Notice of Intent

☒ Subsequent Report

☐ Final Abandonment Notice

☐ Acidize

☐ Alter Casing

☐ Casing Repair

☐ Change Plans

☐ Convert to Injection

☐ Deepen

☐ Fracture Treat

☐ New Construction

☐ Plug and Abandon

☐ Plug Back

☐ Production (Start/Resume)

☐ Reclamation

☐ Recomplete

☐ Temporarily Abandon

☐ Water Disposal

☐ Water Shut-Off

☐ Well Integrity

☒ Other Spud & csg

3 Describe Proposed or Completed Operation (clearly state all pertinent details, including estimated starting date of any proposed work and approximate duration thereof. If the proposal is to deepen directionally or recompleate horizontally, give subsurface locations and measured and true vertical depths of all pertinent markers and zones. Attach the Bond under which the work will be performed or provide the Bond No. on file with BLM/BIA. Required subsequent reports shall be filed within 30 days following completion of the involved operations. If the operation results in a multiple completion or recompleation in a new interval, a Form 3160-4 shall be filed once testing has been completed. Final Abandonment Notices shall be filed only after all requirements, including reclamation, have been completed, and the operator has determined that the site is ready for final inspection.)

Accepted for record - NMOC

8-16-11

06/05/11..MI & spud 12 1/4" hole. Ran 995' 9 7/8" 36# J55 ST&C csg. Cemented with 100 sks Thixad Class H with additives. Mixed @ 14.6 #/g w/1.49 yd. Tail with 500 sks Class C with additives. Mixed @ 14.8 #/g w/1.34 yd. Circ 34 sks cement to pit. Plug down @ 2:45 A.M. 06/08/11. WOC 18 hrs. At 3:30 A.M. 06/09/11 tested BOPE & casing to 1500# for 30 minutes, held OK. Chart & schematic attached. Drilled out with 8 3/4" bit.

06/14/11...TD'ed 8 3/4" hole @ 3212'. Ran 3212' 7" 26# J55 BT&C/LT&C Csg. Cemented with 100 sks BJ Lite "C" (35:55:6) with additives. Mixed @ 12.5 #/g w/ 2.13 yd. Tail with 400 sks Class "C" w/additives. Mixed @ 14.8 #/g w/1.33 yd. Plug down @ 2:30 pm 06/16/11. Circ 134 sks to pit. At 4:30 pm on 06/14/11 tested BOPE and casing to 1500# for 30 minutes, held OK. Drilled out with 6 1/8" bit.

06/16/11 TD'ed 6 1/8" hole @ 6464' MD. Ran 4 1/2" 11.6# P110 LT&C csg w/Packers plus staging tools. End of casing @ 6445' MD. Ran 16 stage tools w/16 pkrs & liner hanger. Top of liner @ 2853' MD.

ACCEPTED FOR RECORD

14. I hereby certify that the foregoing is true and correct

Name (Printed/Typed)

Jackie Lathan

Title Hobbs Regulatory

Signature

Date 07/05/11

JUL 23 2011

BUREAU OF LAND MANAGEMENT
CARLSBAD FIELD OFFICE

Approved by (Signature)

Name
(Printed/Typed)

Title

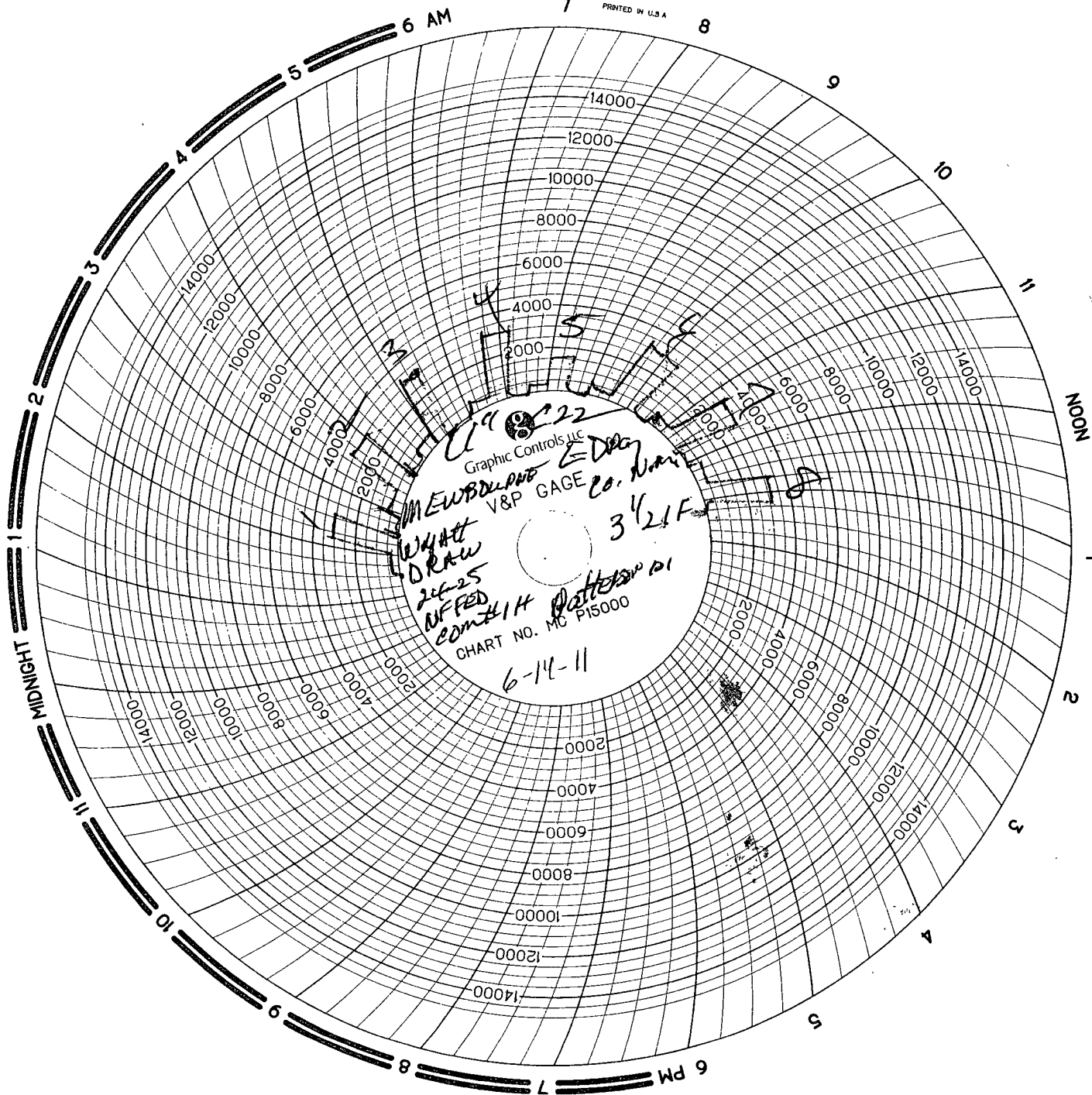
Conditions of approval, if any, are attached. Approval of this notice does not warrant or certify that the applicant holds legal or equitable title to those rights in the subject lease which would entitle the applicant to conduct operations thereon.

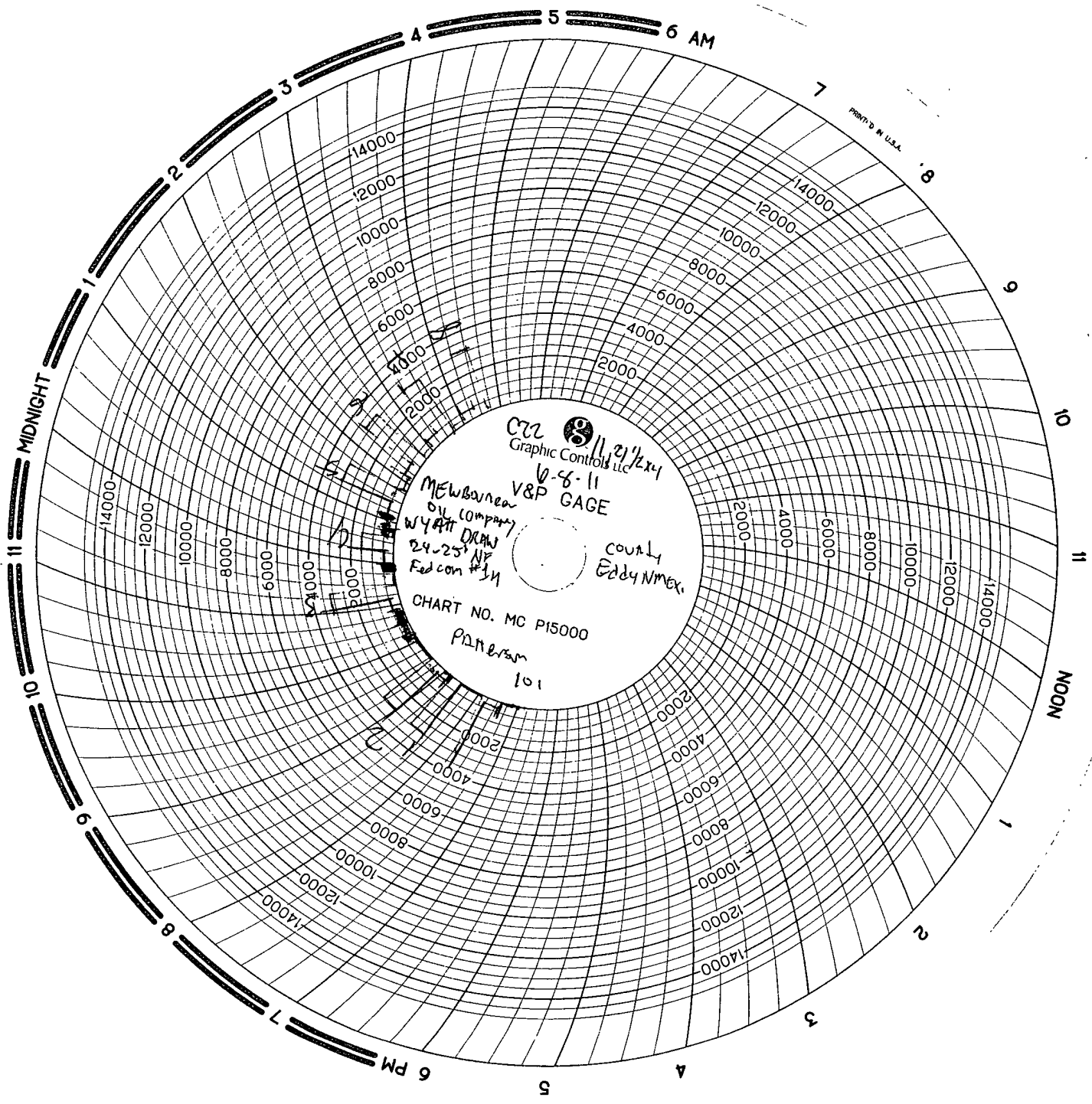
Office

Date

Title 18 U.S.C. Section 1001 and Title 43 U.S.C. Section 1212, make it a crime for any person knowingly and willfully to make to any department or agency of the United States any false, fictitious or fraudulent statements or representations as to any matter within its jurisdiction.

(Continued on next page)





PRINTED IN U.S.A.

Graphic Controls, Inc.
11 2 1/2 x 14

MEWBA near
oil company
WYATT DRAW
24-25 NW
Red com #34

V&P GAGE

county
Eddy N Mex.

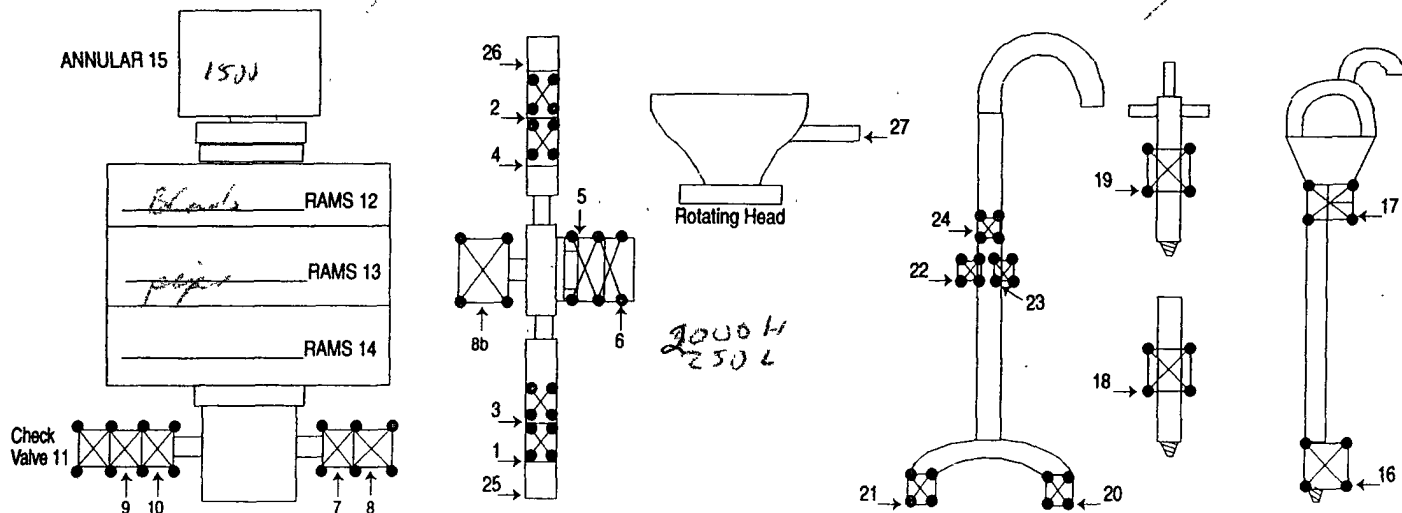
CHART NO. MC P15000

Pattern
101



INVOICE
B 13236

ANNULAR 15

[illegible]

8 HR@ 1150 1150
HR@
Mileage 140 @ 100 140

SUB TOTAL 6290
TAX 10.95
TOTAL 6300.95

MAN WELDING SERVICES, INC

Company MEWBOYNE OIL COMPANY Date 6-8-11

Lease WYATT DRAW 24-25 NE FALCON #11 County F.D., N.MEX.

Drilling Contractor PATTERSON 101 Plug & Drill Pipe Size 592, 11, 41/64

Accumulator Function Test - OO&GO#2

To Check - USABLE FLUID IN THE NITROGEN BOTTLES (III.A.2.c.i. or ii or iii)

- Make sure all rams and annular are open and if applicable HCR is closed.
- Ensure accumulator is pumped up to working pressure! (Shut off all pumps)
- 1. Open HCR Valve. (If applicable)
- 2. Close annular.
- 3. Close **all** pipe rams.
- 4. Open one set of the pipe rams to simulate closing the blind ram.
- 5. For 3 ram stacks, open the annular to achieve the 50+ % safety factor. (5M and greater systems).
- 6. **Record remaining pressure** 1500 psi. **Test Fails if pressure is lower than required.**
 - a. {950 psi for a 1500 psi system} b. {1200 psi for a 2000 & 3000 psi system }
- 7. If annular is closed, open it at this time and close HCR.

To Check - PRECHARGE ON BOTTLES OR SPHERICAL (III.A.2.d.)

- Start with manifold pressure at, or above, maximum acceptable pre-charge pressure:
 - a. {800 psi for a 1500 psi system} b. {1100 psi for 2000 and 3000 psi system}
- 1. Open bleed line to the tank, slowly. (gauge needle will drop at the lowest bottle pressure)
- 2. Close bleed line. Barely bump electric pump and see what pressure the needle jumps up to.
- 3. **Record pressure drop** 900 psi. **Test fails if pressure drops below minimum.**
- **Minimum:** a. {700 psi for a 1500 psi system} b. {900 psi for a 2000 & 3000 psi system}

To Check - THE CAPACITY OF THE ACCUMULATOR PUMPS (III.A.2.f.)

- Isolate the accumulator bottles or spherical from the pumps & manifold.
- Open the bleed off valve to the tank, {manifold psi should go to 0 psi} close bleed valve.
- 1. Open the HCR valve, {if applicable}
- 2. Close annular
- 3. With **pumps** only, time how long it takes to regain the required manifold pressure.
- 4. **Record elapsed time** 40 sec. **Test fails if it takes over 2 minutes.**
 - a. {950 psi for a 1500 psi system} b. {1200 psi for a 2000 & 3000 psi system}