

marbob
energy corporation

March 22, 2005

Oil Conservation Division
1301 W. Grand Ave.
Artesia, New Mexico 88210

Attention: Mr. Tim Gum

RE: Unorthodox Well Location

Dear Mr. Gum:

30-015-34018

Marbob Energy Corporation respectfully requests an administrative approval of the following unorthodox location pursuant to Order No. R-7900-B:

Burch Keely Unit #967
25' FNL & 1345' FEL, Unit B
Section 24, T17S, R29E
Eddy County, New Mexico
3935' from Unit Boundary
25' from Quarter Quarter

This well may be completed in the upper 500 feet of the Yeso, the Grayburg, the San Andres, and or the Seven Rivers Formation in the Grayburg Jackson Pool.

Attached to the application are the following Exhibits:

- A. Oil Conservation Division Form C-102 with proration unit outlined (Exhibit A).
- B. A plat which shows all other wells within the quarter-quarter section and Burch Keely boundary (Exhibit B).

If this unorthodox location meets with your approval, please sign below and return to our office. Thank you for your help.

Sincerely,

Melanie J. Parker
Land Department

RECEIVED

MAR 23 2005

OFFICE OF THE
COUNTY CLERK

Burch Keely Unit #967
Unorthodox Well Location
March 25, 2005

Approved this 23rd day of March, 2005.

By: Bryan G. Arment

Title: Petroleum Engineer Specialist

Oil Conservation Division
Artesia Office

AUG 19 2004

DISTRICT I

P.O. Box 1980, Hobbs, NM 88241-1980

DISTRICT II

P.O. Drawer DD, Artesia, NM 88211-0719

DISTRICT III

1000 Rio Brazos Rd., Aztec, NM 87410

DISTRICT IV

P.O. BOX 2088, SANTA FE, N.M. 87504-2088

State of New Mexico

Energy, Minerals and Natural Resources Department

OIL CONSERVATION DIVISION

P.O. Box 2088

Santa Fe, New Mexico 87504-2088

Form C-102

Revised February 10, 1994

Submit to Appropriate District Office

State Lease - 4 Copies

Fee Lease - 3 Copies

WELL LOCATION AND ACREAGE DEDICATION PLAT

☐ AMENDED REPORT

API Number 30-015	Pool Code 28509	Pool Name GRBG JACKSON SR Q GRBG SA
Property Code 006497	Property Name BURCH KEELY UNIT	Well Number 967
OGRID No. 14049	Operator Name MARBOB ENERGY CORPORATION	Elevation 3617'

Surface Location

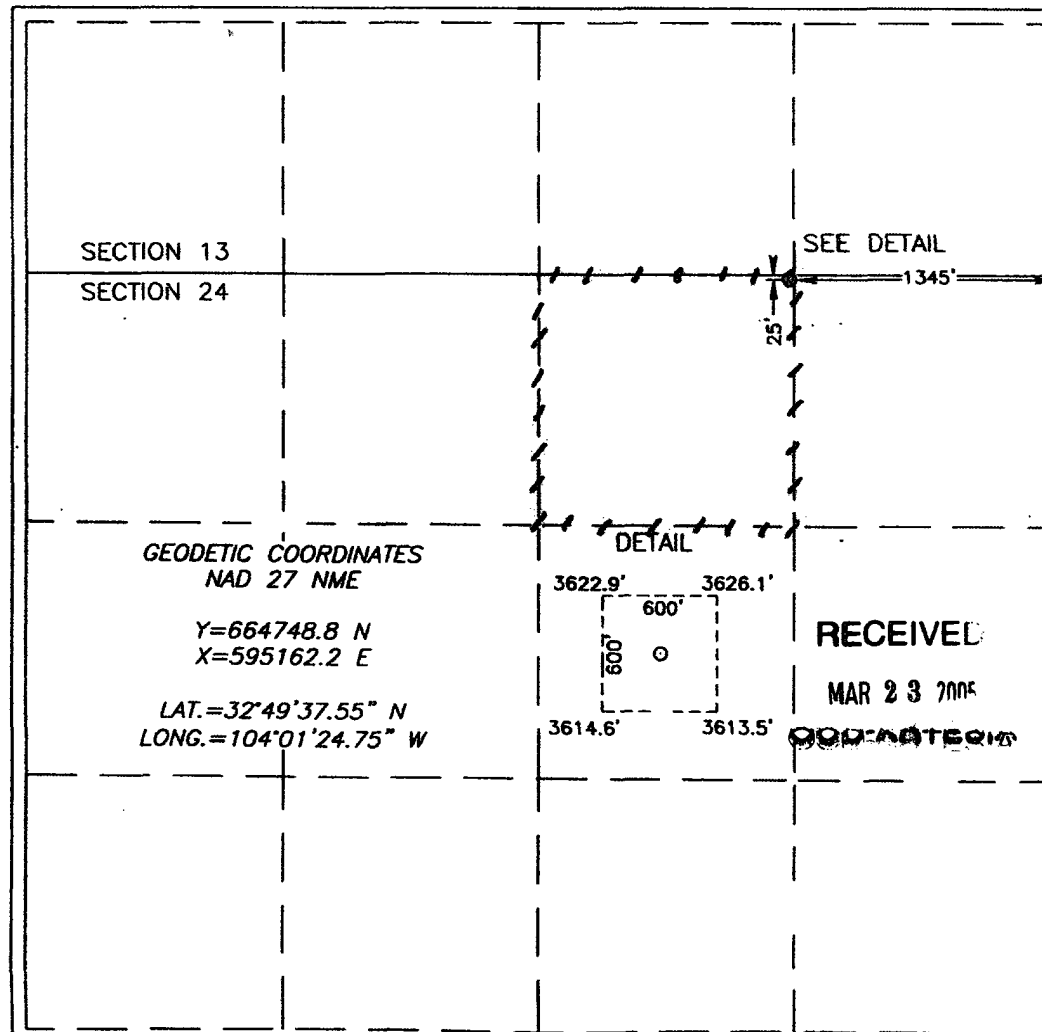
UL or lot No.	Section	Township	Range	Lot Idn	Feet from the	North/South line	Feet from the	East/West line	County
B	24	17-S	29-E		25	NORTH	1345	EAST	EDDY

Bottom Hole Location If Different From Surface

UL or lot No.	Section	Township	Range	Lot Idn	Feet from the	North/South line	Feet from the	East/West line	County

Dedicated Acres	Joint or Infill	Consolidation Code	Order No.

NO ALLOWABLE WILL BE ASSIGNED TO THIS COMPLETION UNTIL ALL INTERESTS HAVE BEEN CONSOLIDATED
OR A NON-STANDARD UNIT HAS BEEN APPROVED BY THE DIVISION



OPERATOR CERTIFICATION

I hereby certify the the information
contained herein is true and complete to the
best of my knowledge and belief.

Signature

Melanie J. Parker

Printed Name

Land Department

Title

February 14, 2005

Date

SURVEYOR CERTIFICATION

I hereby certify that the well location shown
on this plat was plotted from field notes of
actual surveys made by me or under my
supervision, and that the same is true and
correct to the best of my belief.

AUGUST 10, 2004

Date Surveyed

JR

Signature & Seal of
Professional Surveyor

04.11.1006

Certificate No. GARY EDSON

12841



Figure 1 shows a schematic representation of the 5' and 3' ends of the hTERT gene. The top part of the diagram shows the 5' end with exons 1, 2, 3, 4, and 5, and introns 1, 2, 3, 4, and 5. The bottom part shows the 3' end with exons 6, 7, 8, 9, and 10, and introns 6, 7, 8, and 9. The scale bar indicates 1 kb.

- Oil Well
- P&A Oil Well
- Injection Well
- ✦ Dry Hole
- Location

Burch Keely Unit
T17S R29 & 30E
Eddy Co., NM

BKU 2005 POP	1" = 3000'	1/15/2005
	Scale 1:30000.	mg