

# Stan 32 State 71H

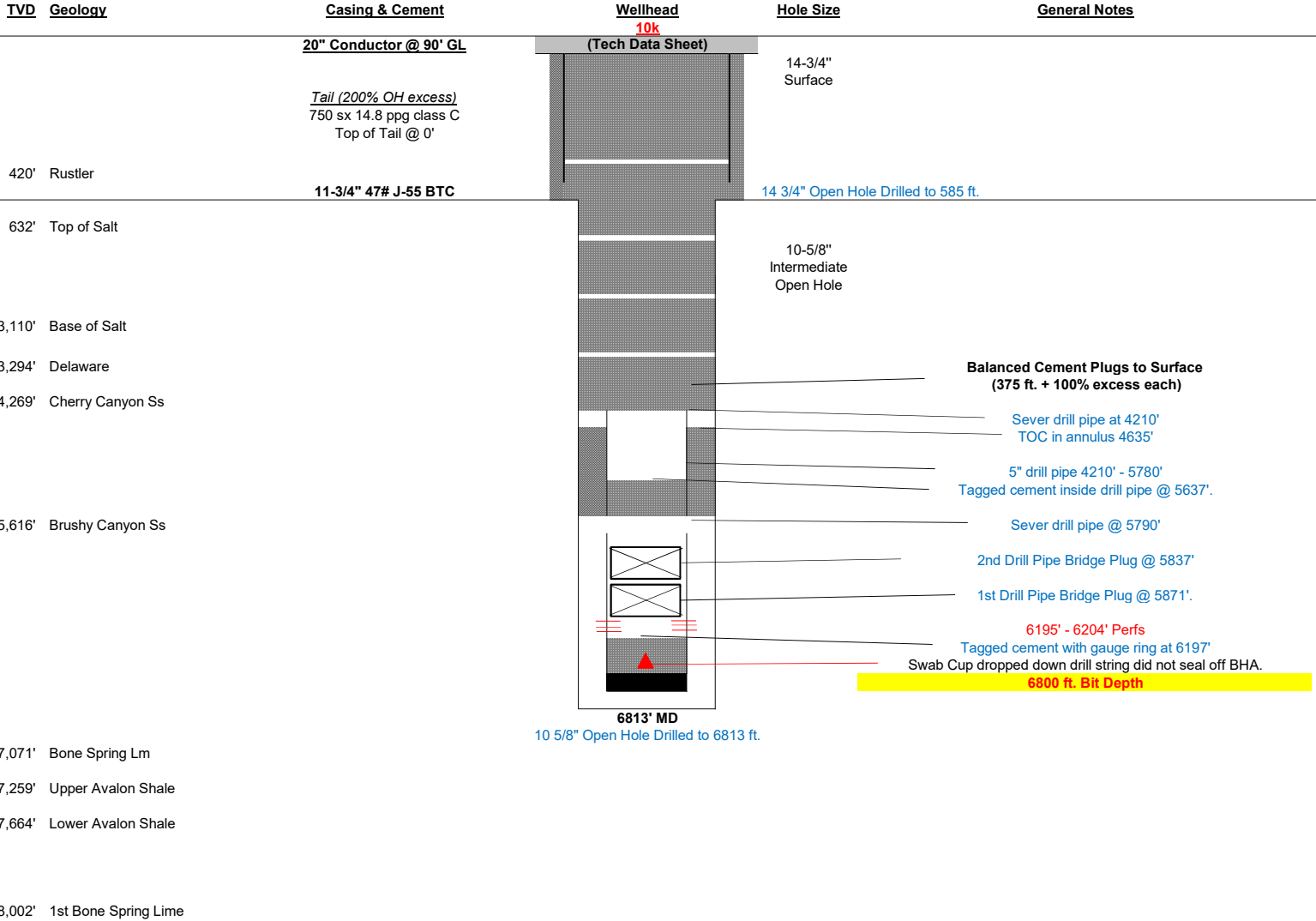
2nd Bone Spring, 1.0 Mile Lateral

County: Eddy  
SHL: 182' FSL, 1245' FEL  
Sec 32, T 26S, R 30E  
BHL: 330' FSL, 50' FWL  
Sec 32, T 26S, R 30E  
Area: NMOCD Water Basin



AFE # DD.2019.05156.DRL  
XTO ID # 1956011001  
API # 30-015-46231  
Permit NMOCD  
Elevation GL 2924', KB 2947' (23' AGL)  
Rig: Nabors M7507

**\*\*Add'l Regulatory paperwork in WellView\*\***



BHA Left Downhole (MWD probe removed) 5790' - 6800'

Drill String Components						
Jts	Item Des	OD (in)	ID (in)	Len (ft)	Cum Len (ft)	
182	Drill Pipe	5	4.276	5,730.60	6,590.00	
9	HWDP	5	3.000	276.53	859.40	
1	XO Sub	6.44	2.813	3.64	582.87	
12	Drill Collar	6 1/2	2.875	365.64	579.23	
1	XO Sub	6 7/16	2.875	3.59	213.59	
3	Drill Collar	8	2.875	88.20	210.00	
	XO Sub	7 13/16	2.875	2.26	121.80	
	NMDC	7 15/16	3.313	29.04	119.54	
	NMDC	8 1/16	3.313	30.11	90.50	
	UBHO Sub	8	2.938	2.68	60.39	
	Stabilizer	10 1/2	2.813	7.11	57.71	
	Shock Sub	8 1/16	2.813	12.81	50.60	
	Mud Motor	7 11/16		36.29	37.79	