

District I
1625 N. French Dr., Hobbs, NM 88240
Phone: (575) 393-6161 Fax: (575) 393-0720
District II
811 S. First St., Artesia, NM 88210
Phone: (575) 748-1283 Fax: (575) 748-9720
District III
1000 Rio Brazos Road, Aztec, NM 87410
Phone: (505) 334-6178 Fax: (505) 334-6170
District IV
1220 S. St. Francis Dr., Santa Fe, NM 87505
Phone: (505) 476-3460 Fax: (505) 476-3462

State of New Mexico
Energy, Minerals & Natural Resources Department
OIL CONSERVATION DIVISION
1220 South St. Francis Dr.
Santa Fe, NM 87505

Form C-102
Revised August 1, 2011
Submit one copy to appropriate
District Office

☐ AMENDED REPORT

WELL LOCATION AND ACREAGE DEDICATION PLAT

¹ API Number 30-015-46228	² Pool Code 98220	³ Pool Name Purple Sage Wolfcamp
⁴ Property Code 328240	⁵ Property Name SQUINTS 4/5 WOIJ FEE	⁶ Well Number 1H
⁷ GRID NO. 14744	⁸ Operator Name MEWBOURNE OIL COMPANY	⁹ Elevation 3102'

¹⁰ Surface Location

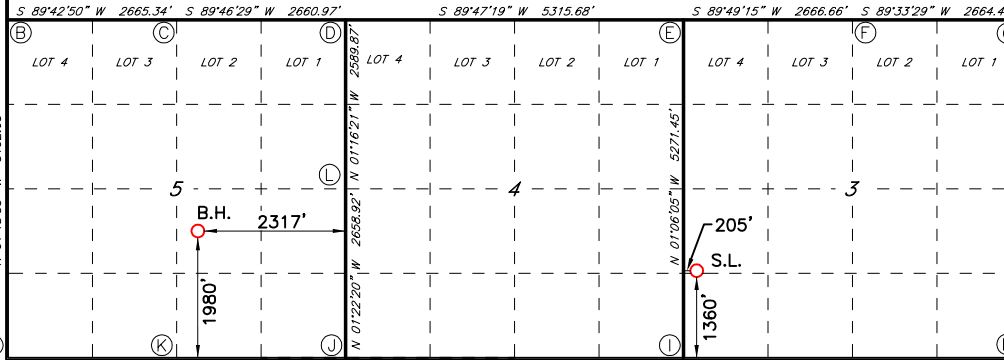
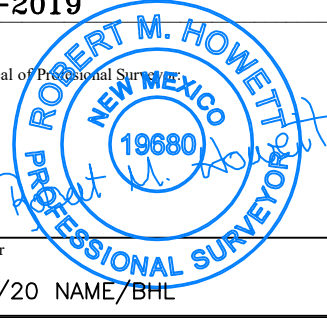
UL or lot no. L	Section 3	Township 22S	Range 27E	Lot Idn	Feet from the 1360	North/South line SOUTH	Feet From the 205	East/West line WEST	County EDDY
---------------------------	---------------------	------------------------	---------------------	---------	------------------------------	----------------------------------	-----------------------------	-------------------------------	-----------------------

¹¹ Bottom Hole Location If Different From Surface

UL or lot no. J	Section 5	Township 22S	Range 27E	Lot Idn	Feet from the 1980	North/South line SOUTH	Feet from the 2317	East/West line EAST	County EDDY
---------------------------	---------------------	------------------------	---------------------	---------	------------------------------	----------------------------------	------------------------------	-------------------------------	-----------------------

¹² Dedicated Acres	¹³ Joint or Infill	¹⁴ Consolidation Code	¹⁵ Order No.
-------------------------------	-------------------------------	----------------------------------	-------------------------

No allowable will be assigned to this completion until all interest have been consolidated or a non-standard unit has been approved by the division.

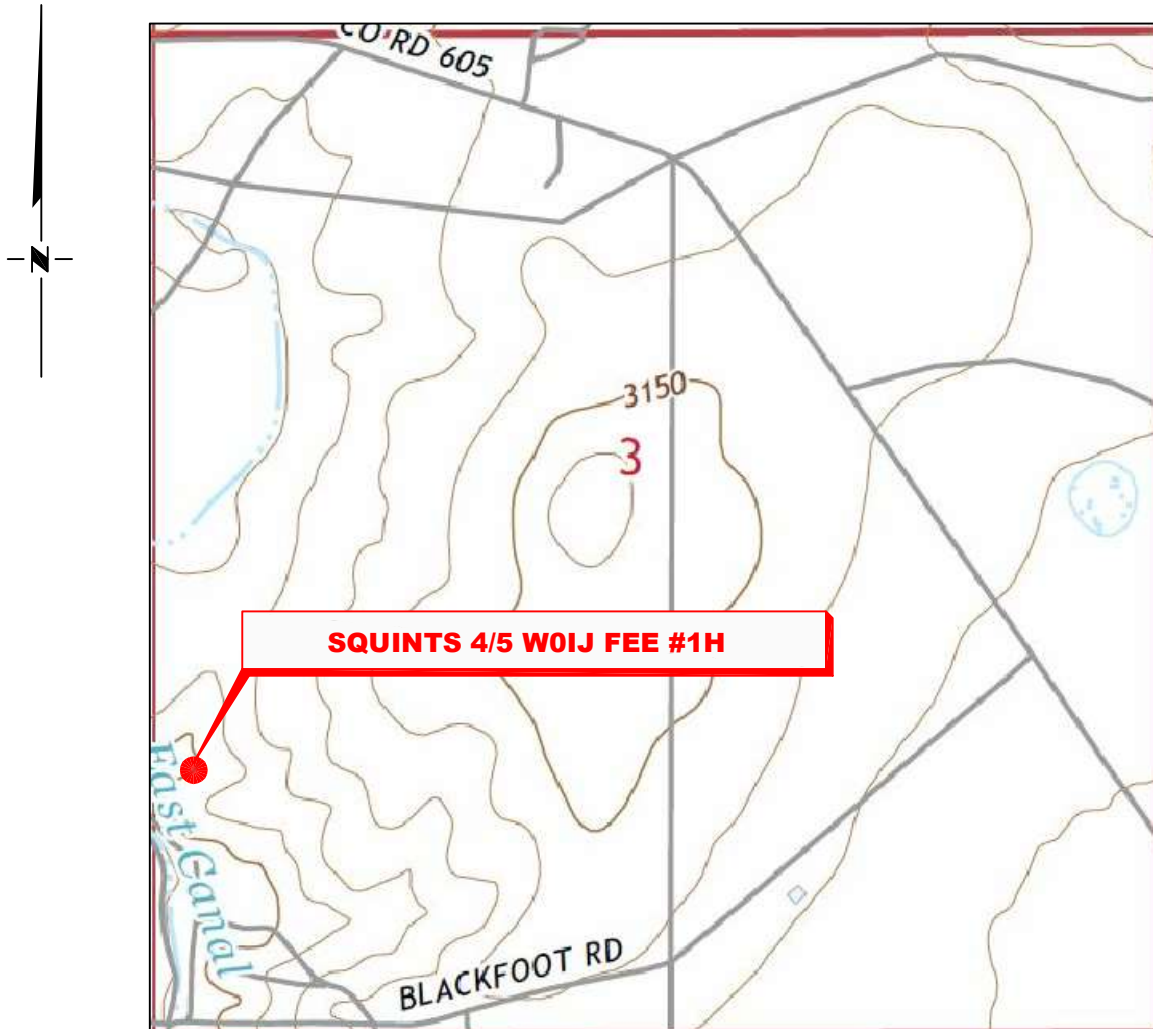
¹⁶ GEODETIC DATA NAD 83 GRID - NM EAST SURFACE LOCATION N: 515980.4 - E: 587003.7 LAT: 32.4184100°N LONG: 104.1853413°W GEODETIC DATA NAD 83 GRID - NM EAST BOTTOM HOLE N: 516618.4 - E: 579166.4 LAT: 32.4201911°N LONG: 104.2107376°W	CORNER DATA NAD 83 GRID - NM EAST I: CALCULATED CORNER N: 514621.1 - E: 586824.9 A: FOUND 1" PIPE N: 514658.2 - E: 576248.6 J: FOUND 1" IRON PIPE N: 514624.6 - E: 581530.3 B: FOUND 1/2" REBAR N: 519847.0 - E: 576084.2 K: FOUND 1" IRON PIPE N: 514641.5 - E: 578890.0 L: FOUND 1/2" REBAR N: 517282.1 - E: 581466.7 C: FOUND ALUMINUM CAP "PS8510" N: 519860.3 - E: 578748.8 D: FOUND 1" PIPE N: 519870.8 - E: 581409.2 E: FOUND 2-7/8" PIPE N: 519890.4 - E: 586723.6 F: FOUND BRASS CAP "1943" N: 519898.7 - E: 589389.6 G: FOUND BRASS CAP "1943" N: 519919.3 - E: 592053.3 H: CALCULATED CORNER N: 514637.5 - E: 592113.5	¹⁷ OPERATOR CERTIFICATION <i>I hereby certify that the information contained herein is true and complete to the best of my knowledge and belief, and that this organization either owns a working interest or unleased mineral interest in the land including the proposed bottom hole location or has a right to drill this well at this location pursuant to a contract with an owner of such a mineral or working interest, or to a voluntary pooling agreement or a compulsory pooling order heretofore entered by the division.</i> Signature _____ Date _____ Printed Name _____ E-mail Address _____
 <p>1980' 2317' 205' 1360'</p>		¹⁸ SURVEYOR CERTIFICATION <i>I hereby certify that the well location shown on this plat was plotted from field notes of actual surveys made by me or under my supervision, and that the same is true and correct to the best of my belief.</i> 08-01-2019 Date of Survey Signature and Seal of Professional Surveyor:  19680 Certificate Number Rev: 2/24/20 NAME/BHL

Job No: LS20020150

RWP 5/15/2020

LOCATION VERIFICATION MAP

NOT TO SCALE



*SECTION 3, TWP. 22 SOUTH, RGE. 27 EAST,
N. M. P. M., EDDY CO., NEW MEXICO*

OPERATOR: Mewbourne Oil Company
LEASE: Squints 4/5 W0IJ Fee
WELL NO.: 1H
ELEVATION: 3102'

LOCATION: 1360' FSL & 205' FWL
CONTOUR INTERVAL: 10'
USGS TOPO. SOURCE MAP: Carlsbad East, NM (2017)

Copyright 2016 - All Rights Reserved

1	NAME/BHL	2/20
NO.	REVISION	DATE
JOB NO.: LS20020150		
DWG. NO.: 20020150-2		



701 S. CECIL ST., HOBBS, NM 88240 (575) 964-8200

SCALE: N. T. S.
DATE: 08-01-19
SURVEYED BY: ML/CG
DRAWN BY: LPS
APPROVED BY: RMH
SHEET: 1 OF 1

VICINITY MAP

NOT TO SCALE



*SECTION 3, TWP. 22 SOUTH, RGE. 27 EAST,
N. M. P. M., EDDY CO., NEW MEXICO*

OPERATOR: Mewbourne Oil Company

LOCATION: 1360' FSL & 205' FWL

LEASE: Squints 4/5 WOIJ Fee

ELEVATION: 3102'

WELL NO.: 1H

Copyright 2016 - All Rights Reserved

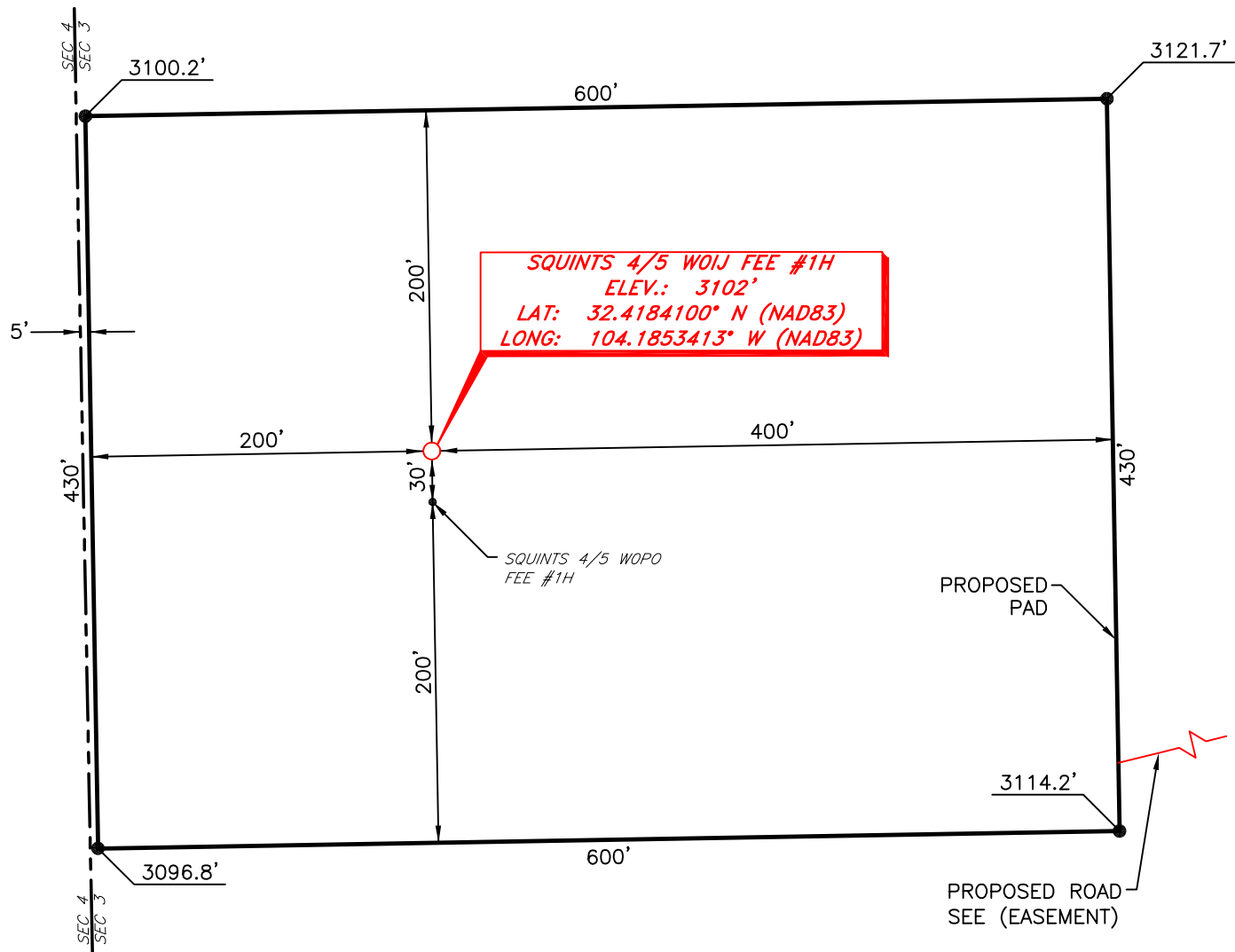
1	NAME/BHL	2/20
NO.	REVISION	DATE
JOB NO.: LS20020150		
DWG. NO.: 20020150-3		



701 S. CECIL ST., HOBBS, NM 88240 (575) 964-8200

SCALE: N. T. S.
DATE: 08-01-19
SURVEYED BY: ML/CG
DRAWN BY: LPS
APPROVED BY: RMH
SHEET: 1 OF 1

MEWBOURNE OIL COMPANY
SQUINTS 4/5 WOIJ FEE #1H
(1360' FSL & 205' FWL)
SECTION 3, T22S, R27E
N. M. P. M., EDDY COUNTY, NEW MEXICO



DIRECTIONS TO LOCATION

From the intersection of CR-605 (Refinery Rd.) and CR-606 (Blackfoot Rd.).
Go Southwest on CR-606 approx. 0.8 miles to a lease road on the right;
Turn right and go North approx. 0.2 miles to a lease road on the left;
Turn left and go West approx. 0.1 miles to a proposed road;
Continue on proposed road for 0.1 miles to a location on the right.



THIS IS NOT A BOUNDARY SURVEY, APPARENT PROPERTY CORNERS AND PROPERTY LINES ARE SHOWN FOR INFORMATION ONLY. BOUNDARY DATA IS SHOWN FROM A PREVIOUS SURVEY REFERENCED HEREON.

SCALE: 1" = 100'
0 50 100
BEARINGS ARE
NAD 83 GRID - NM EAST
DISTANCES ARE GROUND

Copyright 2016 - All Rights Reserved

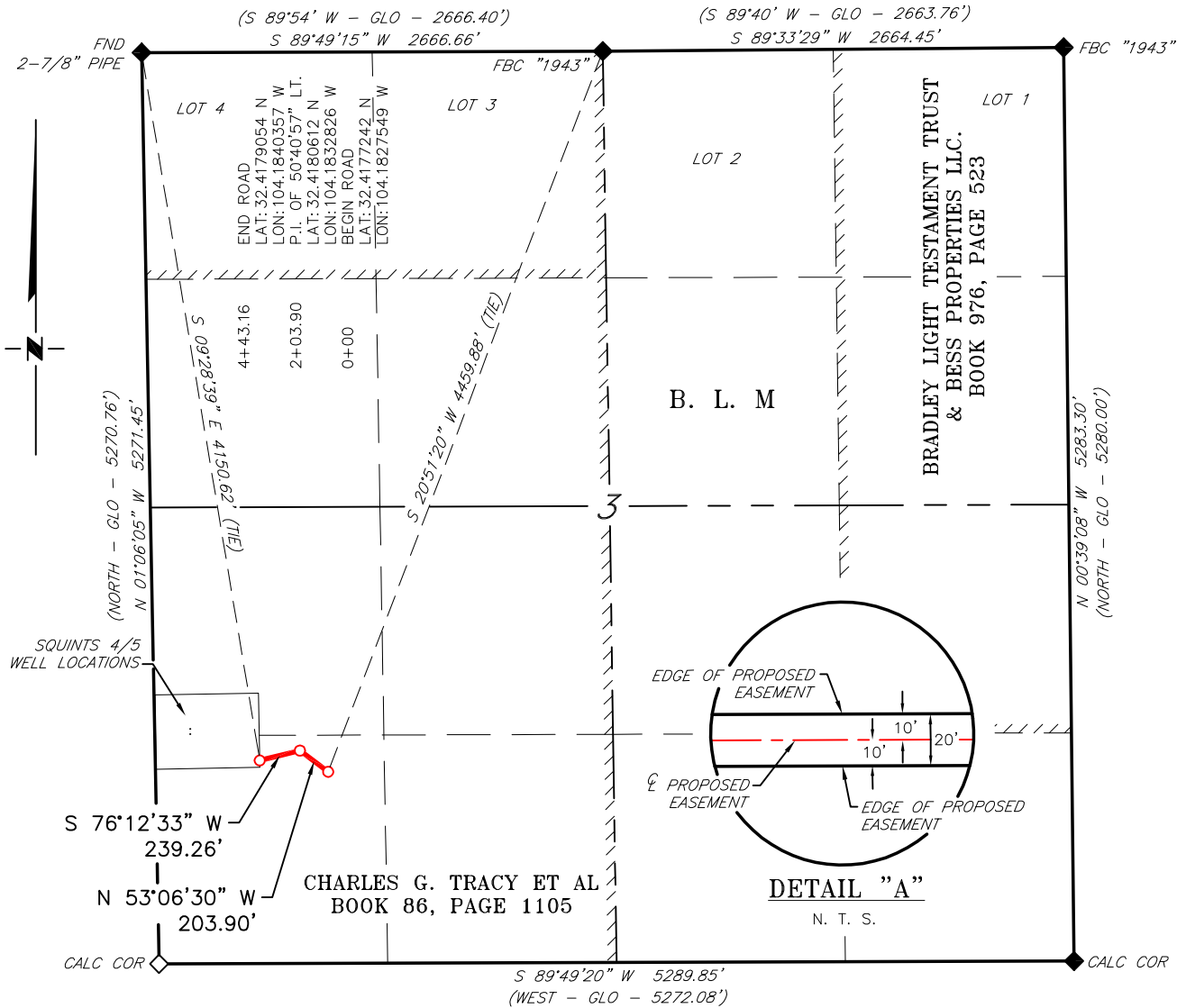
1	NAME/BHL	2/20
NO.	REVISION	DATE
JOB NO.: LS20020150		
DWG. NO.: 20020150-4		



701 S. CECIL ST., HOBBS, NM 88240 (575) 964-8200

SCALE: 1" = 100'
DATE: 08-01-19
SURVEYED BY: ML/CG
DRAWN BY: LPS
APPROVED BY: RMH
SHEET: 1 OF 1

MEWBOURNE OIL COMPANY
PROPOSED ACCESS ROAD FOR THE SQUINTS 4/5 WOIJ FEE #1H &
WOPO FEE #1H WELL LOCATIONS
SECTION 3, T22S, R27E,
N. M. P. M., EDDY CO., NEW MEXICO



DESCRIPTION

A strip of land 20 feet wide, being 443.16 feet or 26.858 rods in length, lying in Section 3, Township 22 South, Range 27 East, N. M. P. M., Eddy County, New Mexico, being 10 feet left and 10 feet right of the following described survey of a centerline across the lands of Charles G. Tracy ETAL, according to a deed filed for record in Book 86, Page 1105, of the Deed Records of Eddy County, New Mexico:

BEGINNING at Engr. Sta. 0+00 a point in the Southwest quarter of Section 3, which bears, S 20°51'20" W, 4,459.88 feet from a brass cap, stamped "1943", found for the North quarter corner of Section 3;

Thence N 53°06'30" W, 203.90 feet, to Engr. Sta. 2+03.90, a P. I. of 50°40'57" left;

Thence S 76°12'33" W, 239.26 feet, to Engr. Sta. 4+43.16, the End of Survey, a point in the Southwest quarter of Section 3, which bears S 09°28'39" E, 4,150.62 feet from a 2-7/8" pipe, found for the Northwest corner of Section 3;

Said strip of land contains 0.203 acres, more or less and is allocated by forties as follows:

SCALE: 1" = 1000'
0 500' 1000'

SW 1/4 SW 1/4 26.858 Rods 0.203 Acres

BEARINGS ARE GRID NAD 83
NM EAST
DISTANCES ARE HORIZ. GROUND.

LEGEND

- () RECORD DATA - GLO
◇ CALCULATED CORNER
◆ FOUND MONUMENT AS NOTED
— PROPOSED ACCESS ROAD

I, R. M. Howett, a N. M. Professional Surveyor, hereby certify that I prepared this plat from an actual survey made on the ground under my direct supervision, said survey and plat meet the Min. Stds. for Land Surveying in the State of N. M. and are true and correct to the best of my knowledge and belief.

Robert M. Howett NM PS 19680



Copyright 2016 - All Rights Reserved

1	NAME/BHL	2/20
NO.	REVISION	DATE
JOB NO.: LS20020150		
DWG. NO.: 20020150-5		

RRC

701 S. CECIL ST., HOBBS, NM 88240 (575) 964-8200

SCALE: 1" = 1000'
DATE: 08/01/2019
SURVEYED BY: ML/CG
DRAWN BY: LPS
APPROVED BY: RMH
SHEET: 1 OF 1