

DISTRICT I
1625 N. French Dr., Hobbs, NM 88240
Phone: (575) 393-6161 Fax: (575) 393-0720

DISTRICT II
811 S. First St., Artesia, NM 88210
Phone: (575) 748-1283 Fax: (575) 748-9720

DISTRICT III
1000 Rio Brazos Road, Aztec, NM 87410
Phone: (505) 334-6178 Fax: (505) 334-6170

DISTRICT IV
1220 S. St. Francis Dr., Santa Fe, NM 87505
Phone: (505) 476-3460 Fax: (505) 476-3462

State of New Mexico
Energy, Minerals & Natural Resources Department
OIL CONSERVATION DIVISION
1220 South St. Francis Dr.
Santa Fe, New Mexico 87505

Revised August 1, 2011
Submit one copy to appropriate
District Office

AMENDED REPORT

WELL LOCATION AND ACREAGE DEDICATION PLAT

API Number 30-015-45943	Pool Code 98820	Pool Name PURPLE SAGE (WOLFCAMP)
Property Code 325477	Property Name PARDUE 8808	Well Number 2H
OGRID No. 260297	Operator Name BTA OIL PRODUCERS, LLC	Elevation 2996'

Surface Location

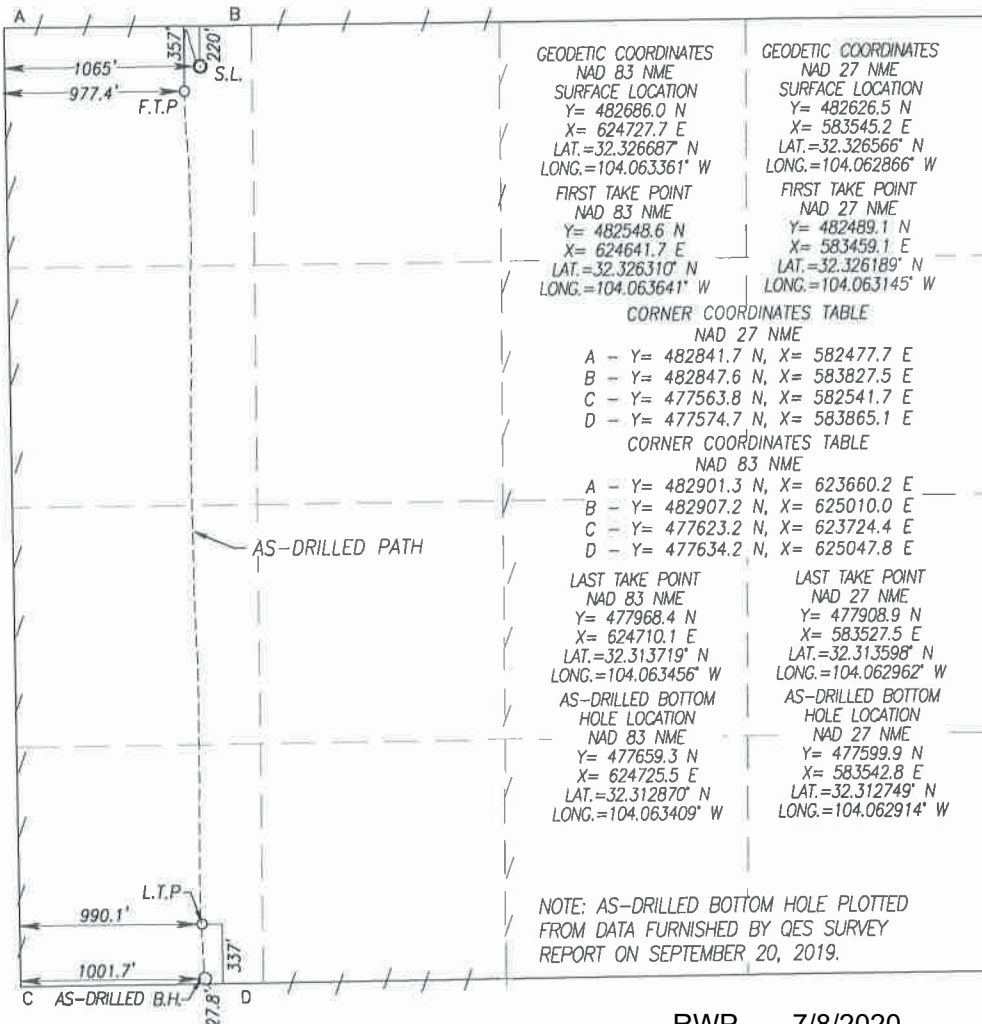
UL or lot No.	Section	Township	Range	Lot Idn	Feet from the	North/South line	Feet from the	East/West line	County
D	11	23-S	28-E		220	NORTH	1065	WEST	EDDY

As-Drilled Bottom Hole Location If Different From Surface

UL or lot No.	Section	Township	Range	Lot Idn	Feet from the	North/South line	Feet from the	East/West line	County
M	11	23-S	28-E		27.8	SOUTH	1001.7	WEST	EDDY

Dedicated Acres	Joint or Infill	Consolidation Code	Order No.
320			

NO ALLOWABLE WILL BE ASSIGNED TO THIS COMPLETION UNTIL ALL INTERESTS HAVE BEEN CONSOLIDATED OR A NON-STANDARD UNIT HAS BEEN APPROVED BY THE DIVISION



<p>GEODETTIC COORDINATES NAD 83 NME SURFACE LOCATION Y= 482686.0 N X= 624727.7 E LAT.=32.326687° N LONG.=104.063361° W</p> <p>FIRST TAKE POINT NAD 83 NME Y= 482548.6 N X= 624641.7 E LAT.=32.326310° N LONG.=104.063641° W</p>	<p>GEODETTIC COORDINATES NAD 27 NME SURFACE LOCATION Y= 482626.5 N X= 583545.2 E LAT.=32.326566° N LONG.=104.062866° W</p> <p>FIRST TAKE POINT NAD 27 NME Y= 482489.1 N X= 583459.1 E LAT.=32.326189° N LONG.=104.063145° W</p>
<p>CORNER COORDINATES TABLE NAD 27 NME</p> <p>A - Y= 482841.7 N, X= 582477.7 E B - Y= 482847.6 N, X= 583827.5 E C - Y= 477563.8 N, X= 582541.7 E D - Y= 477574.7 N, X= 583865.1 E</p>	
<p>CORNER COORDINATES TABLE NAD 83 NME</p> <p>A - Y= 482901.3 N, X= 623660.2 E B - Y= 482907.2 N, X= 625010.0 E C - Y= 477623.2 N, X= 623724.4 E D - Y= 477634.2 N, X= 625047.8 E</p>	
<p>LAST TAKE POINT NAD 83 NME Y= 477968.4 N X= 624710.1 E LAT.=32.313719° N LONG.=104.063456° W</p>	<p>LAST TAKE POINT NAD 27 NME Y= 477908.9 N X= 583527.5 E LAT.=32.313598° N LONG.=104.062962° W</p>
<p>AS-DRILLED BOTTOM HOLE LOCATION NAD 83 NME Y= 477659.3 N X= 624725.5 E LAT.=32.312870° N LONG.=104.063409° W</p>	<p>AS-DRILLED BOTTOM HOLE LOCATION NAD 27 NME Y= 477599.9 N X= 583542.8 E LAT.=32.312749° N LONG.=104.062914° W</p>

NOTE: AS-DRILLED BOTTOM HOLE PLOTTED FROM DATA FURNISHED BY QES SURVEY REPORT ON SEPTEMBER 20, 2019.

OPERATOR CERTIFICATION

I hereby certify that the information herein is true and complete to the best of my knowledge and belief, and that this organization either owns a working interest or unleased mineral interest in the land including the proposed bottom hole location or has a right to drill this well at this location pursuant to a contract with an owner of such mineral or working interest, or to a voluntary pooling agreement or a compulsory pooling order heretofore entered by the division.

Katy Reddell 2/28/2020
Signature Date

KATY REDDELL
Printed Name

kreddell@btaoil.com
E-mail Address

SURVEYOR CERTIFICATION

I hereby certify that the well location shown on this plat was plotted and checked by equal surveys made by me or under my supervision, and that the same is true and correct to the best of my belief.

3239
JUNE 6, 2018
Date of Survey
Signature of Professional Surveyor

Professional Surveyor

Ronald J. Eidson 01/22/2020
Certificate Number Gary G. Eidson 12641
Ronald J. Eidson 3239

ACK REL WO:19110213 JWSC WO: 2013.0009

Intent As Drilled

API # 30-015-45943			
Operator Name: BTA OIL PRODUCERS, LLC		Property Name: PARDUE 8808	Well Number 2H

Kick Off Point (KOP)

UL D	Section 11	Township 23S	Range 28E	Lot	Feet 220	From N/S N	Feet 1065	From E/W W	County eddy
Latitude 32.326687					Longitude 104.063361				NAD 83

First Take Point (FTP)

UL D	Section 11	Township 23S	Range 28E	Lot	Feet 357	From N/S N	Feet 977	From E/W W	County EDDY
Latitude 32.326310					Longitude 104.063641				NAD 83

Last Take Point (LTP)

UL M	Section 11	Township 23S	Range 28E	Lot	Feet 337	From N/S S	Feet 990	From E/W W	County EDDY
Latitude 32.313719					Longitude 104.063456				NAD 83

Is this well the defining well for the Horizontal Spacing Unit? NO

Is this well an infill well? YES

If infill is yes please provide API if available, Operator Name and well number for Defining well for Horizontal Spacing Unit.

API # 30-015-45942			
Operator Name: BTA OIL PRODUCERS LLC		Property Name: PARDUE 8808	Well Number 1H



BTA Oil Producers, LLC

Eddy County, New Mexico (NAD 83)

Sec 11, T23-S, R28-E

Pardue 8808 #2H

Wellbore #1

Design: Wellbore #1

Survey Report - Geographic

20 September, 2019



Company:	BTA Oil Producers, LLC	Local Co-ordinate Reference:	Well Pardue 8808 #2H
Project:	Eddy County, New Mexico (NAD 83)	TVD Reference:	WELL @ 3021.0usft (Patterson #597)
Site:	Sec 11, T23-S, R28-E	MD Reference:	WELL @ 3021.0usft (Patterson #597)
Well:	Pardue 8808 #2H	North Reference:	Grid
Wellbore:	Wellbore #1	Survey Calculation Method:	Minimum Curvature
Design:	Wellbore #1	Database:	EDM 5000.1 Single User Db

Project	Eddy County, New Mexico (NAD 83)		
Map System:	US State Plane 1983	System Datum:	Mean Sea Level
Geo Datum:	North American Datum 1983		
Map Zone:	New Mexico Eastern Zone		

Site	Sec 11, T23-S, R28-E				
Site Position:		Northing:	482,685.90 usft	Latitude:	32° 19' 36.073 N
From:	Map	Easting:	624,697.70 usft	Longitude:	104° 3' 48.450 W
Position Uncertainty:	0.0 usft	Slot Radius:	13-3/16 "	Grid Convergence:	0.14 °

Well	Pardue 8808 #2H					
Well Position	+N/-S	0.0 usft	Northing:	482,686.00 usft	Latitude:	32° 19' 36.074 N
	+E/-W	0.0 usft	Easting:	624,727.70 usft	Longitude:	104° 3' 48.100 W
Position Uncertainty		0.0 usft	Wellhead Elevation:	usft	Ground Level:	2,996.0 usft

Wellbore	Wellbore #1				
Magnetics	Model Name	Sample Date	Declination (°)	Dip Angle (°)	Field Strength (nT)
	HDGM	9/10/2019	7.10	60.05	47,887.50000000

Design	Wellbore #1				
Audit Notes:					
Version:	1.0	Phase:	ACTUAL	Tie On Depth:	0.0
Vertical Section:	Depth From (TVD) (usft)	+N/-S (usft)	+E/-W (usft)	Direction (°)	
	0.0	0.0	0.0	180.16	

Survey Program	Date	9/20/2019			
From (usft)	To (usft)	Survey (Wellbore)	Tool Name	Description	
145.0	14,635.0	QES MWD Surveys (Wellbore #1)	OWSG (Rev2) MWD	OWSG MWD - Standard	

Survey										
Measured Depth (usft)	Inclination (°)	Azimuth (°)	Vertical Depth (usft)	+N/-S (usft)	+E/-W (usft)	Map Northing (usft)	Map Easting (usft)	Latitude	Longitude	
0.0	0.00	0.00	0.0	0.0	0.0	482,686.00	624,727.70	32° 19' 36.074 N	104° 3' 48.100 W	
145.0	0.90	224.20	145.0	-0.8	-0.8	482,685.18	624,726.91	32° 19' 36.066 N	104° 3' 48.109 W	
First MWD Survey @ 145.0' MD / 145.0' TVD										
243.0	1.00	212.20	243.0	-2.1	-1.8	482,683.91	624,725.92	32° 19' 36.053 N	104° 3' 48.121 W	
343.0	1.30	208.00	343.0	-3.8	-2.8	482,682.17	624,724.92	32° 19' 36.036 N	104° 3' 48.133 W	
476.0	1.20	218.70	475.9	-6.3	-4.4	482,679.75	624,723.34	32° 19' 36.012 N	104° 3' 48.151 W	
603.0	1.30	211.40	602.9	-8.5	-5.9	482,677.48	624,721.76	32° 19' 35.989 N	104° 3' 48.170 W	
695.0	0.90	233.20	694.9	-9.8	-7.1	482,676.16	624,720.64	32° 19' 35.976 N	104° 3' 48.183 W	
790.0	1.20	332.10	789.9	-9.4	-8.1	482,676.59	624,719.57	32° 19' 35.981 N	104° 3' 48.195 W	
883.0	1.00	319.60	882.9	-7.9	-9.1	482,678.07	624,718.59	32° 19' 35.995 N	104° 3' 48.207 W	
978.0	1.50	3.40	977.8	-6.1	-9.6	482,679.94	624,718.13	32° 19' 36.014 N	104° 3' 48.212 W	
1,073.0	1.80	12.00	1,072.8	-3.4	-9.2	482,682.64	624,718.51	32° 19' 36.041 N	104° 3' 48.207 W	



Survey Report - Geographic



Company:	BTA Oil Producers, LLC	Local Co-ordinate Reference:	Well Pardue 8808 #2H
Project:	Eddy County, New Mexico (NAD 83)	TVD Reference:	WELL @ 3021.0usft (Patterson #597)
Site:	Sec 11, T23-S, R28-E	MD Reference:	WELL @ 3021.0usft (Patterson #597)
Well:	Pardue 8808 #2H	North Reference:	Grid
Wellbore:	Wellbore #1	Survey Calculation Method:	Minimum Curvature
Design:	Wellbore #1	Database:	EDM 5000.1 Single User Db

Survey										
Measured Depth (usft)	Inclination (°)	Azimuth (°)	Vertical Depth (usft)	+N/-S (usft)	+E/-W (usft)	Map Northing (usft)	Map Easting (usft)	Latitude	Longitude	
1,167.0	1.70	8.90	1,166.8	-0.5	-8.7	482,685.46	624,719.04	32° 19' 36.069 N	104° 3' 48.201 W	
1,262.0	1.70	12.20	1,261.7	2.2	-8.2	482,688.23	624,719.55	32° 19' 36.096 N	104° 3' 48.195 W	
1,356.0	1.60	16.60	1,355.7	4.9	-7.5	482,690.85	624,720.22	32° 19' 36.122 N	104° 3' 48.187 W	
1,451.0	1.10	346.00	1,450.6	7.0	-7.3	482,693.01	624,720.38	32° 19' 36.143 N	104° 3' 48.185 W	
1,546.0	1.10	331.40	1,545.6	8.7	-8.0	482,694.70	624,719.72	32° 19' 36.160 N	104° 3' 48.193 W	
1,641.0	1.10	334.80	1,640.6	10.3	-8.8	482,696.32	624,718.90	32° 19' 36.176 N	104° 3' 48.202 W	
1,736.0	0.60	332.80	1,735.6	11.6	-9.4	482,697.59	624,718.28	32° 19' 36.189 N	104° 3' 48.210 W	
1,831.0	0.70	122.60	1,830.6	11.7	-9.2	482,697.72	624,718.54	32° 19' 36.190 N	104° 3' 48.207 W	
1,926.0	1.90	120.50	1,925.6	10.6	-7.3	482,696.61	624,720.39	32° 19' 36.179 N	104° 3' 48.185 W	
2,021.0	0.10	83.00	2,020.6	9.8	-5.9	482,695.82	624,721.83	32° 19' 36.171 N	104° 3' 48.168 W	
2,116.0	0.70	331.80	2,115.6	10.3	-6.1	482,696.34	624,721.64	32° 19' 36.176 N	104° 3' 48.171 W	
2,211.0	0.90	88.10	2,210.5	10.9	-5.6	482,696.88	624,722.11	32° 19' 36.181 N	104° 3' 48.165 W	
2,306.0	1.60	93.80	2,305.5	10.8	-3.5	482,696.81	624,724.18	32° 19' 36.181 N	104° 3' 48.141 W	
2,401.0	0.50	112.60	2,400.5	10.6	-1.8	482,696.56	624,725.88	32° 19' 36.178 N	104° 3' 48.121 W	
2,496.0	1.20	251.60	2,495.5	10.1	-2.4	482,696.09	624,725.32	32° 19' 36.174 N	104° 3' 48.128 W	
2,559.0	1.20	245.80	2,558.5	9.6	-3.6	482,695.61	624,724.09	32° 19' 36.169 N	104° 3' 48.142 W	
2,664.0	1.30	238.80	2,663.5	8.5	-5.6	482,694.55	624,722.07	32° 19' 36.158 N	104° 3' 48.165 W	
2,759.0	2.30	326.50	2,758.4	9.6	-7.6	482,695.58	624,720.10	32° 19' 36.169 N	104° 3' 48.188 W	
2,854.0	2.70	333.20	2,853.3	13.2	-9.7	482,699.16	624,718.04	32° 19' 36.204 N	104° 3' 48.212 W	
2,950.0	2.60	330.70	2,949.2	17.1	-11.8	482,703.08	624,715.95	32° 19' 36.243 N	104° 3' 48.237 W	
3,045.0	2.60	327.00	3,044.1	20.8	-14.0	482,706.77	624,713.72	32° 19' 36.279 N	104° 3' 48.262 W	
3,140.0	3.70	334.80	3,139.0	25.3	-16.5	482,711.35	624,711.25	32° 19' 36.325 N	104° 3' 48.291 W	
3,234.0	4.00	336.30	3,232.8	31.1	-19.1	482,717.09	624,708.64	32° 19' 36.382 N	104° 3' 48.321 W	
3,328.0	3.90	336.90	3,326.6	37.0	-21.6	482,723.04	624,706.06	32° 19' 36.441 N	104° 3' 48.351 W	
3,517.0	2.80	339.00	3,515.2	47.3	-25.8	482,733.26	624,701.89	32° 19' 36.542 N	104° 3' 48.400 W	
3,612.0	2.60	337.00	3,610.1	51.4	-27.5	482,737.41	624,700.21	32° 19' 36.583 N	104° 3' 48.419 W	
3,706.0	4.60	339.70	3,703.9	56.9	-29.6	482,742.91	624,698.07	32° 19' 36.637 N	104° 3' 48.444 W	
3,801.0	4.90	341.60	3,798.6	64.3	-32.2	482,750.33	624,695.47	32° 19' 36.711 N	104° 3' 48.474 W	
3,895.0	4.70	343.70	3,892.3	71.8	-34.6	482,757.84	624,693.12	32° 19' 36.785 N	104° 3' 48.501 W	
3,991.0	4.50	344.20	3,988.0	79.2	-36.7	482,765.23	624,690.99	32° 19' 36.859 N	104° 3' 48.526 W	
4,086.0	4.00	344.40	4,082.7	86.0	-38.6	482,772.01	624,689.09	32° 19' 36.926 N	104° 3' 48.548 W	
4,181.0	5.90	342.80	4,177.3	93.9	-41.0	482,779.87	624,686.75	32° 19' 37.004 N	104° 3' 48.575 W	
4,276.0	6.20	343.00	4,271.8	103.4	-43.9	482,789.44	624,683.81	32° 19' 37.098 N	104° 3' 48.609 W	
4,371.0	6.20	342.30	4,366.3	113.2	-47.0	482,799.23	624,680.75	32° 19' 37.195 N	104° 3' 48.644 W	
4,465.0	6.30	343.20	4,459.7	123.0	-50.0	482,809.00	624,677.72	32° 19' 37.292 N	104° 3' 48.679 W	
4,560.0	6.20	345.00	4,554.1	132.9	-52.8	482,818.95	624,674.88	32° 19' 37.391 N	104° 3' 48.712 W	
4,656.0	6.20	345.70	4,649.6	143.0	-55.4	482,828.98	624,672.26	32° 19' 37.490 N	104° 3' 48.742 W	
4,750.0	5.70	344.80	4,743.1	152.4	-57.9	482,838.40	624,669.78	32° 19' 37.583 N	104° 3' 48.771 W	
4,845.0	5.10	344.80	4,837.6	161.0	-60.3	482,847.03	624,667.44	32° 19' 37.669 N	104° 3' 48.798 W	
4,940.0	4.60	346.20	4,932.3	168.8	-62.3	482,854.80	624,665.42	32° 19' 37.746 N	104° 3' 48.821 W	
5,034.0	4.00	344.20	5,026.0	175.6	-64.1	482,861.62	624,663.63	32° 19' 37.813 N	104° 3' 48.842 W	
5,128.0	3.20	345.50	5,119.9	181.3	-65.6	482,867.31	624,662.08	32° 19' 37.869 N	104° 3' 48.860 W	
5,223.0	3.00	342.80	5,214.7	186.3	-67.0	482,872.26	624,660.68	32° 19' 37.918 N	104° 3' 48.876 W	
5,317.0	2.70	342.30	5,308.6	190.7	-68.4	482,876.72	624,659.28	32° 19' 37.963 N	104° 3' 48.892 W	
5,411.0	2.40	339.20	5,402.5	194.7	-69.8	482,880.66	624,657.91	32° 19' 38.002 N	104° 3' 48.908 W	
5,506.0	1.20	329.00	5,497.5	197.4	-71.0	482,883.38	624,656.69	32° 19' 38.029 N	104° 3' 48.922 W	
5,600.0	0.70	208.50	5,591.5	197.7	-71.8	482,883.72	624,655.91	32° 19' 38.032 N	104° 3' 48.931 W	
5,694.0	0.70	208.40	5,685.4	196.7	-72.3	482,882.71	624,655.36	32° 19' 38.022 N	104° 3' 48.937 W	
5,788.0	0.60	202.70	5,779.4	195.7	-72.8	482,881.75	624,654.90	32° 19' 38.012 N	104° 3' 48.943 W	
5,882.0	0.70	195.00	5,873.4	194.7	-73.1	482,880.74	624,654.56	32° 19' 38.003 N	104° 3' 48.947 W	
5,978.0	0.70	185.20	5,969.4	193.6	-73.3	482,879.59	624,654.36	32° 19' 37.991 N	104° 3' 48.949 W	
6,073.0	1.00	181.50	6,064.4	192.2	-73.4	482,878.18	624,654.28	32° 19' 37.977 N	104° 3' 48.950 W	
6,167.0	1.20	179.50	6,158.4	190.4	-73.4	482,876.38	624,654.27	32° 19' 37.959 N	104° 3' 48.950 W	
6,261.0	0.50	334.20	6,252.4	189.8	-73.6	482,875.76	624,654.10	32° 19' 37.953 N	104° 3' 48.952 W	
6,356.0	0.40	307.20	6,347.4	190.3	-74.1	482,876.34	624,653.65	32° 19' 37.959 N	104° 3' 48.958 W	



Survey Report - Geographic



Company:	BTA Oil Producers, LLC	Local Co-ordinate Reference:	Well Pardue 8808 #2H
Project:	Eddy County, New Mexico (NAD 83)	TVD Reference:	WELL @ 3021.0usft (Patterson #597)
Site:	Sec 11, T23-S, R28-E	MD Reference:	WELL @ 3021.0usft (Patterson #597)
Well:	Pardue 8808 #2H	North Reference:	Grid
Wellbore:	Wellbore #1	Survey Calculation Method:	Minimum Curvature
Design:	Wellbore #1	Database:	EDM 5000.1 Single User Db

Survey										
Measured Depth (usft)	Inclination (°)	Azimuth (°)	Vertical Depth (usft)	+N/-S (usft)	+E/-W (usft)	Map Northing (usft)	Map Easting (usft)	Latitude	Longitude	
6,451.0	0.50	226.80	6,442.4	190.3	-74.6	482,876.25	624,653.09	32° 19' 37.958 N	104° 3' 48.964 W	
6,546.0	1.80	342.00	6,537.4	191.4	-75.4	482,877.39	624,652.32	32° 19' 37.969 N	104° 3' 48.973 W	
6,641.0	1.70	331.90	6,632.3	194.0	-76.5	482,880.05	624,651.20	32° 19' 37.996 N	104° 3' 48.986 W	
6,736.0	1.50	315.20	6,727.3	196.2	-78.0	482,882.18	624,649.66	32° 19' 38.017 N	104° 3' 49.004 W	
6,831.0	1.80	306.50	6,822.3	197.9	-80.1	482,883.95	624,647.58	32° 19' 38.034 N	104° 3' 49.028 W	
6,926.0	1.40	350.90	6,917.2	200.0	-81.5	482,885.98	624,646.20	32° 19' 38.055 N	104° 3' 49.044 W	
7,021.0	1.10	327.90	7,012.2	201.9	-82.2	482,887.90	624,645.53	32° 19' 38.074 N	104° 3' 49.052 W	
7,115.0	1.00	329.80	7,106.2	203.4	-83.1	482,889.37	624,644.64	32° 19' 38.088 N	104° 3' 49.062 W	
7,210.0	0.70	305.00	7,201.2	204.4	-84.0	482,890.42	624,643.75	32° 19' 38.099 N	104° 3' 49.073 W	
7,305.0	0.60	268.10	7,296.2	204.7	-84.9	482,890.74	624,642.78	32° 19' 38.102 N	104° 3' 49.084 W	
7,399.0	0.50	265.30	7,390.2	204.7	-85.8	482,890.69	624,641.88	32° 19' 38.101 N	104° 3' 49.094 W	
7,494.0	1.10	271.70	7,485.2	204.7	-87.2	482,890.68	624,640.55	32° 19' 38.101 N	104° 3' 49.110 W	
7,587.0	0.90	113.10	7,578.1	204.4	-87.4	482,890.42	624,640.33	32° 19' 38.099 N	104° 3' 49.112 W	
7,682.0	0.50	129.80	7,673.1	203.9	-86.4	482,889.86	624,641.33	32° 19' 38.093 N	104° 3' 49.101 W	
7,777.0	0.90	142.50	7,768.1	203.0	-85.6	482,889.00	624,642.11	32° 19' 38.085 N	104° 3' 49.092 W	
7,872.0	0.80	128.40	7,863.1	202.0	-84.6	482,888.00	624,643.08	32° 19' 38.075 N	104° 3' 49.080 W	
7,968.0	1.10	132.80	7,959.1	201.0	-83.4	482,886.96	624,644.28	32° 19' 38.064 N	104° 3' 49.066 W	
8,063.0	1.40	156.70	8,054.1	199.3	-82.3	482,885.27	624,645.41	32° 19' 38.048 N	104° 3' 49.053 W	
8,157.0	1.80	181.30	8,148.1	196.7	-81.9	482,882.74	624,645.83	32° 19' 38.023 N	104° 3' 49.049 W	
8,252.0	0.10	3.80	8,243.0	195.3	-81.9	482,881.33	624,645.80	32° 19' 38.009 N	104° 3' 49.049 W	
8,347.0	0.40	8.00	8,338.0	195.7	-81.8	482,881.74	624,645.85	32° 19' 38.013 N	104° 3' 49.048 W	
8,441.0	1.30	158.80	8,432.0	195.1	-81.4	482,881.07	624,646.29	32° 19' 38.006 N	104° 3' 49.043 W	
8,537.0	1.80	195.20	8,528.0	192.6	-81.4	482,878.60	624,646.28	32° 19' 37.982 N	104° 3' 49.043 W	
8,631.0	1.30	206.40	8,622.0	190.2	-82.3	482,876.22	624,645.42	32° 19' 37.958 N	104° 3' 49.053 W	
8,726.0	0.80	89.00	8,717.0	189.3	-82.1	482,875.27	624,645.61	32° 19' 37.949 N	104° 3' 49.051 W	
8,821.0	0.70	75.50	8,811.9	189.4	-80.9	482,875.43	624,646.83	32° 19' 37.950 N	104° 3' 49.037 W	
8,915.0	0.70	86.60	8,905.9	189.6	-79.7	482,875.61	624,647.96	32° 19' 37.952 N	104° 3' 49.024 W	
9,010.0	0.50	157.90	9,000.9	189.3	-79.0	482,875.26	624,648.70	32° 19' 37.948 N	104° 3' 49.015 W	
9,043.0	0.60	163.50	9,033.9	189.0	-78.9	482,874.96	624,648.80	32° 19' 37.945 N	104° 3' 49.014 W	
9,132.0	4.70	189.00	9,122.8	184.9	-79.3	482,870.91	624,648.36	32° 19' 37.905 N	104° 3' 49.019 W	
9,227.0	14.60	185.90	9,216.4	169.1	-81.2	482,855.11	624,646.52	32° 19' 37.749 N	104° 3' 49.041 W	
9,321.0	23.40	182.90	9,305.2	138.6	-83.4	482,824.63	624,644.35	32° 19' 37.447 N	104° 3' 49.067 W	
9,416.0	30.30	179.90	9,389.9	95.8	-84.3	482,781.77	624,643.44	32° 19' 37.023 N	104° 3' 49.079 W	
9,510.0	38.30	179.40	9,467.5	42.8	-83.9	482,728.84	624,643.78	32° 19' 36.500 N	104° 3' 49.077 W	
9,617.0	53.50	181.50	9,541.7	-33.8	-84.7	482,652.24	624,643.00	32° 19' 35.742 N	104° 3' 49.088 W	
9,690.0	63.40	180.60	9,579.9	-95.9	-85.8	482,590.12	624,641.89	32° 19' 35.127 N	104° 3' 49.103 W	
9,706.1	65.80	180.47	9,586.8	-110.4	-86.0	482,575.57	624,641.75	32° 19' 34.983 N	104° 3' 49.105 W	
330' PA Crossed @ 9706.1' MD / 9586.8' TVD										
9,753.0	72.80	180.10	9,603.3	-154.3	-86.2	482,531.73	624,641.54	32° 19' 34.549 N	104° 3' 49.109 W	
9,847.0	84.70	177.30	9,621.6	-246.3	-84.0	482,439.74	624,643.67	32° 19' 33.639 N	104° 3' 49.087 W	
9,941.0	90.00	175.70	9,626.0	-340.0	-78.3	482,346.05	624,649.41	32° 19' 32.711 N	104° 3' 49.023 W	
10,035.0	91.80	176.00	9,624.5	-433.7	-71.5	482,252.31	624,656.21	32° 19' 31.784 N	104° 3' 48.946 W	
10,130.0	91.40	175.70	9,621.8	-528.4	-64.6	482,157.60	624,663.08	32° 19' 30.846 N	104° 3' 48.869 W	
10,223.0	92.20	180.20	9,618.9	-621.3	-61.3	482,064.73	624,666.41	32° 19' 29.927 N	104° 3' 48.833 W	
10,318.0	86.40	178.10	9,620.1	-716.2	-59.9	481,969.79	624,667.81	32° 19' 28.988 N	104° 3' 48.819 W	
10,412.0	86.10	177.60	9,626.2	-809.9	-56.4	481,876.06	624,671.33	32° 19' 28.060 N	104° 3' 48.781 W	
10,506.0	86.10	179.50	9,632.6	-903.7	-54.0	481,782.31	624,673.71	32° 19' 27.132 N	104° 3' 48.756 W	
10,601.0	89.20	180.60	9,636.5	-998.6	-54.1	481,687.40	624,673.62	32° 19' 26.193 N	104° 3' 48.760 W	
10,696.0	90.00	181.80	9,637.2	-1,093.6	-56.1	481,592.43	624,671.63	32° 19' 25.253 N	104° 3' 48.786 W	
10,790.0	90.00	183.10	9,637.2	-1,187.5	-60.1	481,498.52	624,667.61	32° 19' 24.324 N	104° 3' 48.835 W	
10,884.0	89.50	180.10	9,637.6	-1,281.4	-62.7	481,404.56	624,664.99	32° 19' 23.394 N	104° 3' 48.869 W	
10,979.0	86.40	178.30	9,641.0	-1,376.4	-61.4	481,309.65	624,666.31	32° 19' 22.455 N	104° 3' 48.856 W	
11,073.0	87.10	178.10	9,646.3	-1,470.2	-58.4	481,215.85	624,669.26	32° 19' 21.527 N	104° 3' 48.824 W	
11,168.0	88.10	178.50	9,650.3	-1,565.0	-55.6	481,120.98	624,672.08	32° 19' 20.588 N	104° 3' 48.794 W	
11,262.0	93.60	181.70	9,648.9	-1,659.0	-55.8	481,027.03	624,671.91	32° 19' 19.658 N	104° 3' 48.799 W	



Company:	BTA Oil Producers, LLC	Local Co-ordinate Reference:	Well Pardue 8808 #2H
Project:	Eddy County, New Mexico (NAD 83)	TVD Reference:	WELL @ 3021.0usft (Patterson #597)
Site:	Sec 11, T23-S, R28-E	MD Reference:	WELL @ 3021.0usft (Patterson #597)
Well:	Pardue 8808 #2H	North Reference:	Grid
Wellbore:	Wellbore #1	Survey Calculation Method:	Minimum Curvature
Design:	Wellbore #1	Database:	EDM 5000.1 Single User Db

Survey										
Measured Depth (usft)	Inclination (°)	Azimuth (°)	Vertical Depth (usft)	+N/-S (usft)	+E/-W (usft)	Map Northing (usft)	Map Easting (usft)	Latitude	Longitude	
11,356.0	93.00	181.30	9,643.5	-1,752.8	-58.2	480,933.22	624,669.46	32° 19' 18.730 N	104° 3' 48.830 W	
11,450.0	93.20	181.10	9,638.4	-1,846.6	-60.2	480,839.38	624,667.49	32° 19' 17.801 N	104° 3' 48.856 W	
11,545.0	92.20	180.60	9,633.9	-1,941.5	-61.6	480,744.50	624,666.09	32° 19' 16.862 N	104° 3' 48.875 W	
11,640.0	90.30	179.40	9,631.9	-2,036.5	-61.6	480,649.53	624,666.09	32° 19' 15.923 N	104° 3' 48.878 W	
11,735.0	93.30	179.90	9,628.9	-2,131.4	-61.0	480,554.59	624,666.67	32° 19' 14.983 N	104° 3' 48.874 W	
11,828.0	93.40	179.50	9,623.4	-2,224.3	-60.6	480,461.75	624,667.15	32° 19' 14.064 N	104° 3' 48.871 W	
11,922.0	92.10	178.80	9,618.9	-2,318.1	-59.2	480,367.87	624,668.55	32° 19' 13.135 N	104° 3' 48.858 W	
12,016.0	89.00	178.70	9,618.0	-2,412.1	-57.1	480,273.91	624,670.60	32° 19' 12.205 N	104° 3' 48.836 W	
12,110.0	88.90	178.50	9,619.8	-2,506.1	-54.8	480,179.95	624,672.89	32° 19' 11.276 N	104° 3' 48.812 W	
12,204.0	89.20	178.70	9,621.3	-2,600.0	-52.5	480,085.99	624,675.19	32° 19' 10.346 N	104° 3' 48.788 W	
12,298.0	93.20	180.10	9,619.3	-2,694.0	-51.5	479,992.04	624,676.17	32° 19' 9.416 N	104° 3' 48.780 W	
12,392.0	89.30	179.20	9,617.3	-2,787.9	-51.0	479,898.08	624,676.75	32° 19' 8.486 N	104° 3' 48.776 W	
12,486.0	85.90	178.10	9,621.2	-2,881.8	-48.7	479,804.21	624,678.96	32° 19' 7.557 N	104° 3' 48.753 W	
12,580.0	85.80	177.40	9,628.0	-2,975.5	-45.1	479,710.52	624,682.64	32° 19' 6.630 N	104° 3' 48.713 W	
12,674.0	85.20	177.60	9,635.4	-3,069.1	-41.0	479,616.90	624,686.73	32° 19' 5.703 N	104° 3' 48.668 W	
12,768.0	87.60	177.80	9,641.3	-3,162.8	-37.2	479,523.17	624,690.49	32° 19' 4.776 N	104° 3' 48.627 W	
12,861.0	85.80	176.70	9,646.7	-3,255.6	-32.8	479,430.44	624,694.94	32° 19' 3.858 N	104° 3' 48.577 W	
12,956.0	90.90	179.00	9,649.4	-3,350.4	-29.2	479,335.58	624,698.50	32° 19' 2.919 N	104° 3' 48.539 W	
13,049.0	91.90	179.50	9,647.1	-3,443.4	-28.0	479,242.62	624,699.72	32° 19' 1.999 N	104° 3' 48.527 W	
13,144.0	90.50	180.10	9,645.1	-3,538.4	-27.7	479,147.64	624,700.05	32° 19' 1.059 N	104° 3' 48.526 W	
13,238.0	87.80	179.50	9,646.5	-3,632.3	-27.3	479,053.66	624,700.38	32° 19' 0.129 N	104° 3' 48.525 W	
13,332.0	87.00	179.50	9,650.8	-3,726.2	-26.5	478,959.77	624,701.20	32° 18' 59.200 N	104° 3' 48.518 W	
13,426.0	87.80	179.90	9,655.1	-3,820.1	-26.0	478,865.86	624,701.69	32° 18' 58.271 N	104° 3' 48.515 W	
13,520.0	88.20	178.80	9,658.3	-3,914.1	-24.9	478,771.93	624,702.76	32° 18' 57.341 N	104° 3' 48.506 W	
13,614.0	91.20	181.10	9,658.8	-4,008.1	-24.9	478,677.95	624,702.84	32° 18' 56.411 N	104° 3' 48.508 W	
13,708.0	91.50	180.80	9,656.6	-4,102.0	-26.4	478,583.99	624,701.28	32° 18' 55.482 N	104° 3' 48.528 W	
13,803.0	89.00	179.20	9,656.2	-4,197.0	-26.4	478,489.00	624,701.28	32° 18' 54.542 N	104° 3' 48.531 W	
13,897.0	91.40	180.10	9,655.9	-4,291.0	-25.8	478,395.01	624,701.85	32° 18' 53.611 N	104° 3' 48.527 W	
13,991.0	91.00	179.90	9,653.9	-4,385.0	-25.8	478,301.03	624,701.85	32° 18' 52.681 N	104° 3' 48.530 W	
14,086.0	90.00	179.40	9,653.1	-4,480.0	-25.3	478,206.04	624,702.43	32° 18' 51.741 N	104° 3' 48.526 W	
14,179.0	91.50	179.00	9,651.9	-4,572.9	-24.0	478,113.06	624,703.73	32° 18' 50.821 N	104° 3' 48.514 W	
14,273.0	86.80	176.60	9,653.3	-4,666.8	-20.4	478,019.17	624,707.34	32° 18' 49.892 N	104° 3' 48.474 W	
14,330.9	89.66	177.33	9,655.0	-4,724.6	-17.3	477,961.38	624,710.40	32° 18' 49.320 N	104° 3' 48.440 W	
330' PA Crossed @ 14330.9' MD / 9655.0' TVD										
14,368.0	91.50	177.80	9,654.7	-4,761.7	-15.7	477,924.32	624,711.98	32° 18' 48.953 N	104° 3' 48.423 W	
14,462.0	93.50	177.40	9,650.6	-4,855.5	-11.8	477,830.50	624,715.91	32° 18' 48.025 N	104° 3' 48.380 W	
14,555.0	93.80	176.60	9,644.6	-4,948.2	-6.9	477,737.81	624,720.77	32° 18' 47.108 N	104° 3' 48.326 W	
14,635.0	93.80	176.60	9,639.3	-5,027.9	-2.2	477,658.13	624,725.50	32° 18' 46.319 N	104° 3' 48.273 W	
TD @ 14635.0' MD / 9639.3' TVD										

Design Annotations					
Measured Depth (usft)	Vertical Depth (usft)	Local Coordinates		Comment	
		+N/-S (usft)	+E/-W (usft)		
145.0	145.0	-0.8	-0.8	First MWD Survey @ 145.0' MD / 145.0' TVD	
9,706.1	9,586.8	-110.4	-86.0	330' PA Crossed @ 9706.1' MD / 9586.8' TVD	
14,330.9	9,655.0	-4,724.6	-17.3	330' PA Crossed @ 14330.9' MD / 9655.0' TVD	
14,635.0	9,639.3	-5,027.9	-2.2	TD @ 14635.0' MD / 9639.3' TVD	

Checked By: _____ Approved By: _____ Date: _____