

State of New Mexico  
Energy, Minerals and Natural Resources Department

---

**Michelle Lujan**  
Grisham Governor

**Sarah Cottrell Propst**  
Cabinet Secretary

**Todd E. Leahy, JD, PhD**  
Deputy Secretary

**Adrienne Sandoval**, Division Director  
Oil Conservation Division



*08/04/2020*

## Operator Notice Regarding C-104 Denial and Request for Information

*30-015-45082 SALT FLAT CC 20 29 FEDERAL COM #033H*

OCD is providing notice to operators that it will deny your C-104 – *Request for Allowable and Authorization to Transport* if it fails to provide complete and accurate information, including:

Test Allowable, New Well and Recompleted Well

*Please review/amend attachment(s):  
Mark C-14 NW, 'AMENDED REPORT'  
Amend/Verify highlighted areas.*

- ☐ C-103 (or BLM equivalent) for all casing strings
  - ☐ Spud Notice
  - ☐ Surface Casing
  - ☐ Intermediate Casing (if applicable)
  - ☐ Additional Intermediate Casing (if applicable)
  - ☐ Production Casing or Liner
- ☐ Applicable Order (NSL, NSP, Other \_\_\_\_\_)
- ☐ Deviation Survey for Vertical Wells
- ☐ Directional Survey
- ☐ C-102 (As-Drilled Plat for Horizontal Well)

New Well and Recompleted Well Only

- ☒ C-103 Completion Sundry (or BLM equivalent) *Sundry Notice missing PBTD/DATE TUBING DETAIL*
- ☒ C-105 Completion Report (or BLM equivalent) *Missing BLM REVISED approval copy, update highlighted fields. PBTD is filled in #19, no documentation to reflect that depth above. missing tubing details.*
- ☐ All Logs Run on Well

The sale or transport of product without an approved C-104 violates the Oil and Gas Act and the implementing rules, including 19.15.7.15 and 19.15.16.19 NMAC. OCD determines that your C-104 is incomplete or inaccurate. Failure to comply with this notice may result in enforcement action.

**If you have any questions, please contact the local OCD District Office.**

*Once Complete, re-submit through e docs asap. Thank you.*

District I  
1625 N. French Dr., Hobbs, NM 88240  
District II  
811 S. First St., Artesia, NM 88210  
District III  
1000 Rio Brazos Rd., Aztec, NM 87410  
District IV  
1220 S. St. Francis Dr., Santa Fe, NM 87505

State of New Mexico  
Energy, Minerals & Natural Resources

Rec'd 05/11/2020 - NMOCD

Form C-104  
Revised August 1, 2011

Oil Conservation Division  
1220 South St. Francis Dr.  
Santa Fe, NM 87505

Submit one copy to appropriate District Office

☒ AMENDED REPORT

**I. REQUEST FOR ALLOWABLE AND AUTHORIZATION TO TRANSPORT**

<sup>1</sup> Operator name and Address OXY USA INC. P.O. BOX 50250 MIDLAND, TX 79710		<sup>2</sup> OGRID Number 16696
		<sup>3</sup> Reason for Filing Code/ Effective Date – NW
<sup>4</sup> API Number 30 – 015-45082	<sup>5</sup> Pool Name PIERCE CROSSING BONE SPRING	<sup>6</sup> Pool Code 50371
<sup>7</sup> Property Code: 321601	<sup>8</sup> Property Name: SALT FLAT CC 20-29 FEDERAL COM	<sup>9</sup> Well Number: 33H

**II. <sup>10</sup> Surface Location**

Ul or lot no.	Section	Township	Range	Lot Idn	Feet from the	North/South Line	Feet from the	East/West line	County
M	17	24S	29E		252	SOUTH	1292	WEST	EDDY

**<sup>11</sup> Bottom Hole Location** FTP- 282' FNL 1530' FWL LTP- 380' FSL 1582' FWL

UL or lot no.	Section	Township	Range	Lot Idn	Feet from the	North/South line	Feet from the	East/West line	County
N	29	24S	29E		217	SOUTH	1578	WEST	EDDY
<sup>12</sup> Lse Code F	<sup>13</sup> Producing Method Code : F	<sup>14</sup> Gas Connection Date: 3/11/20	<sup>15</sup> C-129 Permit Number	<sup>16</sup> C-129 Effective Date	<sup>17</sup> C-129 Expiration Date				

**III. Oil and Gas Transporters**

<sup>18</sup> Transporter OGRID	<sup>19</sup> Transporter Name and Address	<sup>20</sup> O/G/W
214754	LPC CRUDE OIL, INC.	O
151618	ENTERPRISE FIELD SERVICES LLC	G

**IV. Well Completion Data**

<sup>21</sup> Spud Date 11/2/19	<sup>22</sup> Ready Date 3/1/2020	<sup>23</sup> TD 19991'M 9763'V	<sup>24</sup> PBTD 19948'M 9763'V	<sup>25</sup> Perforations 9847-19828'	<sup>26</sup> DHC, MC
<sup>27</sup> Hole Size	<sup>28</sup> Casing & Tubing Size	<sup>29</sup> Depth Set	<sup>30</sup> Sacks Cement		
14-3/4"	10-3/4"	449'	440		
9-7/8"	7-5/8"	9163'	2251		
6-3/4"	5-1/2"	8982-19981'	958		
	tbq.?				

**V. Well Test Data**

<sup>31</sup> Date New Oil 3/11/20	<sup>32</sup> Gas Delivery Date 3/11/20	<sup>33</sup> Test Date 3/26/20	<sup>34</sup> Test Length 24 HRS	<sup>35</sup> Tbg. Pressure	<sup>36</sup> Csg. Pressure 1568
<sup>37</sup> Choke Size 128/128	<sup>38</sup> Oil 2691	<sup>39</sup> Water 6130	<sup>40</sup> Gas 4612		<sup>41</sup> Test Method F

<sup>42</sup> I hereby certify that the rules of the Oil Conservation Division have been complied with and that the information given above is true and complete to the best of my knowledge and belief.

Signature: 

Printed name: Jana Mendiola

Title: Regulatory Specialist

E-mail Address: Janalyn\_mendiola@oxy.com

Date: 5/11/2020

Phone: 432-685-5936

OIL CONSERVATION DIVISION

Approved by:

**DENIED**

Title:

Approval Date:

**REFER TO PAGE 1 OF THE ATTACHMENTS**

EMNRD- OCD ARTESIA  
REC'D: 5/12/2020

District I  
1625 N. French Dr., Hobbs, NM 88240  
Phone: (575) 393-6161 Fax: (575) 393-0720  
District II  
811 S. First St., Artesia, NM 88210  
Phone: (575) 748-1283 Fax: (575) 748-9720  
District III  
1000 Rio Brazos Road, Aztec, NM 87410  
Phone: (505) 334-6178 Fax: (505) 334-6170  
District IV  
1220 S. St. Francis Dr., Santa Fe, NM 87505  
Phone: (505) 476-3460 Fax: (505) 476-3462

State of New Mexico  
Energy, Minerals & Natural Resources Department  
OIL CONSERVATION DIVISION  
1220 South St. Francis Dr.  
Santa Fe, NM 87505

Form C-102  
Revised August 1, 2011  
Submit one copy to appropriate  
District Office

☒ AMENDED REPORT  
(As-Drilled)

WELL LOCATION AND ACREAGE DEDICATION PLAT

API Number 30-015-45082	Pool Code 50371	Pool Name Pierce Crossing Bone Spring
Property Code 321601	Property Name SALT FLAT CC "20-29" FEDERAL COM	Well Number 33H
OGRID No. 16696	Operator Name OXY USA INC.	Elevation 2941.7'

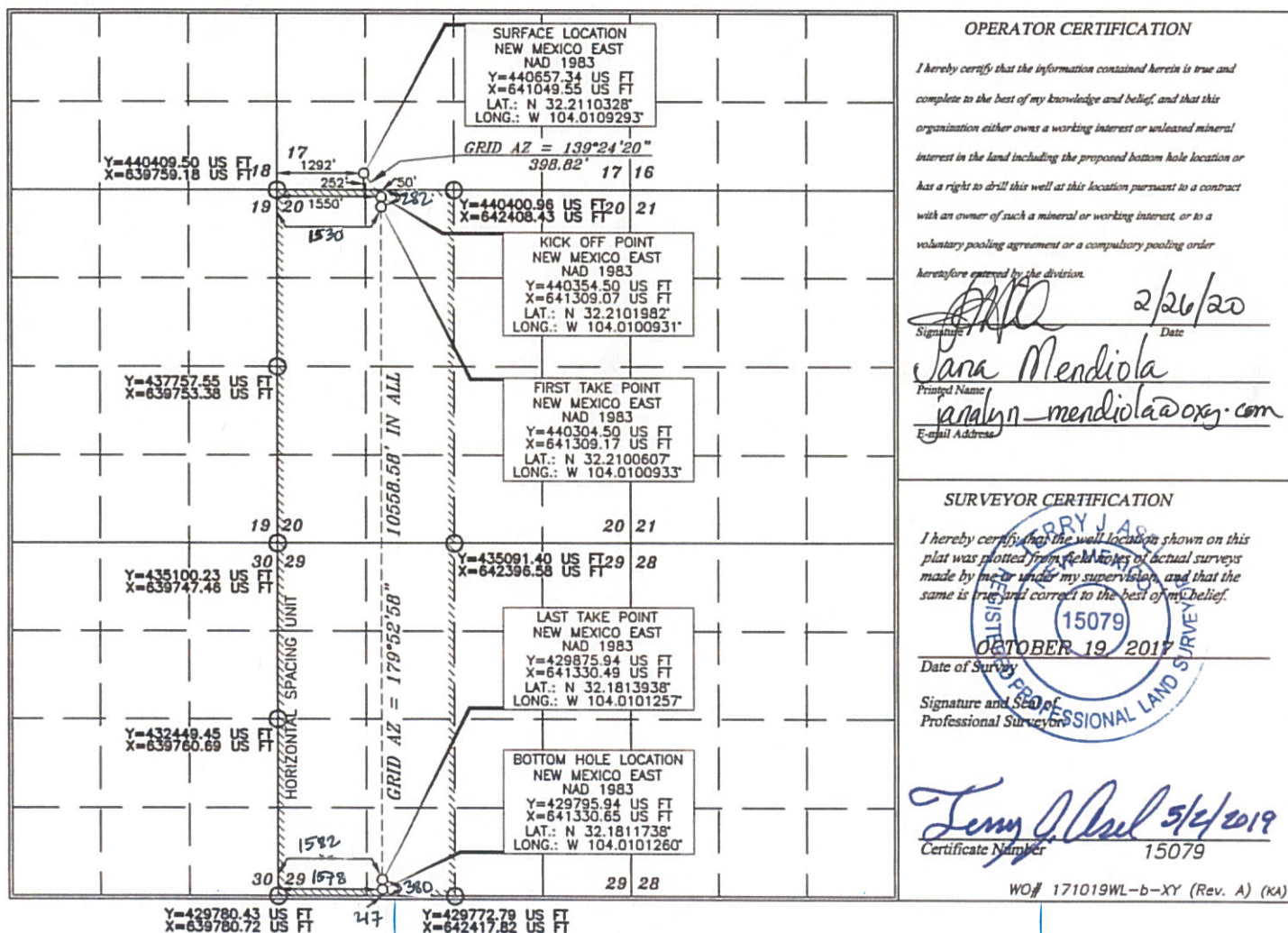
Surface Location

UL or lot no.	Section	Township	Range	Lot Idn	Feet from the	North/South line	Feet from the	East/West line	County
M	17	24 SOUTH	29 EAST, N.M.P.M.		252'	SOUTH	1292'	WEST	EDDY

Bottom Hole Location If Different From Surface

UL or lot no.	Section	Township	Range	Lot Idn	Feet from the	North/South line	Feet from the	East/West line	County
N	29	24 SOUTH	29 EAST, N.M.P.M.		20' 217	SOUTH	1550' 1578	WEST	EDDY
Dedicated Acres 640	Joint or Infill	Consolidation Code	Order No.	FTP - 282 FNL 1530 FWL LTP - 380 FSL 1582 FWL					

No allowable will be assigned to this completion until all interests have been consolidated or a non-standard unit has been approved by the division.





Intent ☐ As Drilled ☒

API # 30-015-45082								
Operator Name: OXY USA INC.			Property Name: SALT FLAT CC 20-29 FEDERAL COM			Well Number 33H		

Kick Off Point (KOP)

UL C	Section 20	Township 24S	Range 29E	Lot	Feet 72	From N/S N	Feet 1430	From E/W W	County EDDY
Latitude 32.21054					Longitude -104.01049				NAD NAD83

First Take Point (FTP)

UL C	Section 20	Township 24S	Range 29E	Lot	Feet 282	From N/S N	Feet 1530	From E/W W	County EDDY
Latitude 32.20956					Longitude -104.01017				NAD NAD83

Last Take Point (LTP)

UL N	Section 29	Township 24S	Range 29E	Lot	Feet 380	From N/S S	Feet 1582	From E/W W	County EDDY
Latitude 32.18217					Longitude -104.01009				NAD NAD83

Is this well the defining well for the Horizontal Spacing Unit? ☐

Is this well an infill well? ☐

If infill is yes please provide API if available, Operator Name and well number for Defining well for Horizontal Spacing Unit.

API #								
Operator Name:			Property Name:			Well Number		


KZ 06/29/2018

Schlumberger Drilling and Measurements  
Drilling Group  
Geo Market Area: South West Texas Basin  
7220 W I-H 20  
Midland, Texas 79706  
Phone : (432) 742-5400 (Main)  
Fax : (432) 742-5606 (Shared)

**Schlumberger**

Well Reference:  
S17, T24S, R29E, EDDY, NM  
N -32.21103 W -104.01093

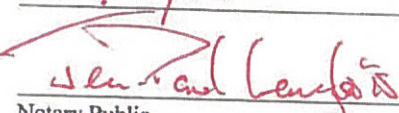
I, RAJA A. HAKEEM RAJA SHAHREEN certify that; I am employed by Drilling & Measurements, a division of Schlumberger Technology Corporation; that I did on the day(s) of December 11, 2019 through December 22, 2019, conduct or supervise the taking of the SlimPulse & Third Party Corrected surveys from a depth of 534.00 feet to a depth of 19948.00 feet referenced to driller's depth; that the data is true, correct, complete and within the limitations of the tool as set forth by Drilling & Measurements, a division of Schlumberger Technology Corporation; that I am authorized and qualified to make this report; that this survey was conducted at the request of OXY USA INCORPORATED for the SALT FLAT CC 20-29 FED COM 33H Well (Original Hole) API No. 30-015-45082 in NewMexico; and that I have reviewed this report and find that it conforms to the principals and procedures as set forth by Drilling & Measurements, a division of Schlumberger Technology Corporation.

By   
RAJA A. HAKEEM RAJA SHAHREEN  
FE


Subscribed and Sworn to before me this 22 day of January (month) 2020 (yr)

My Commission expires:

6/14/23

  
Notary Public

(signature)

  
(County State)





Schlumberger

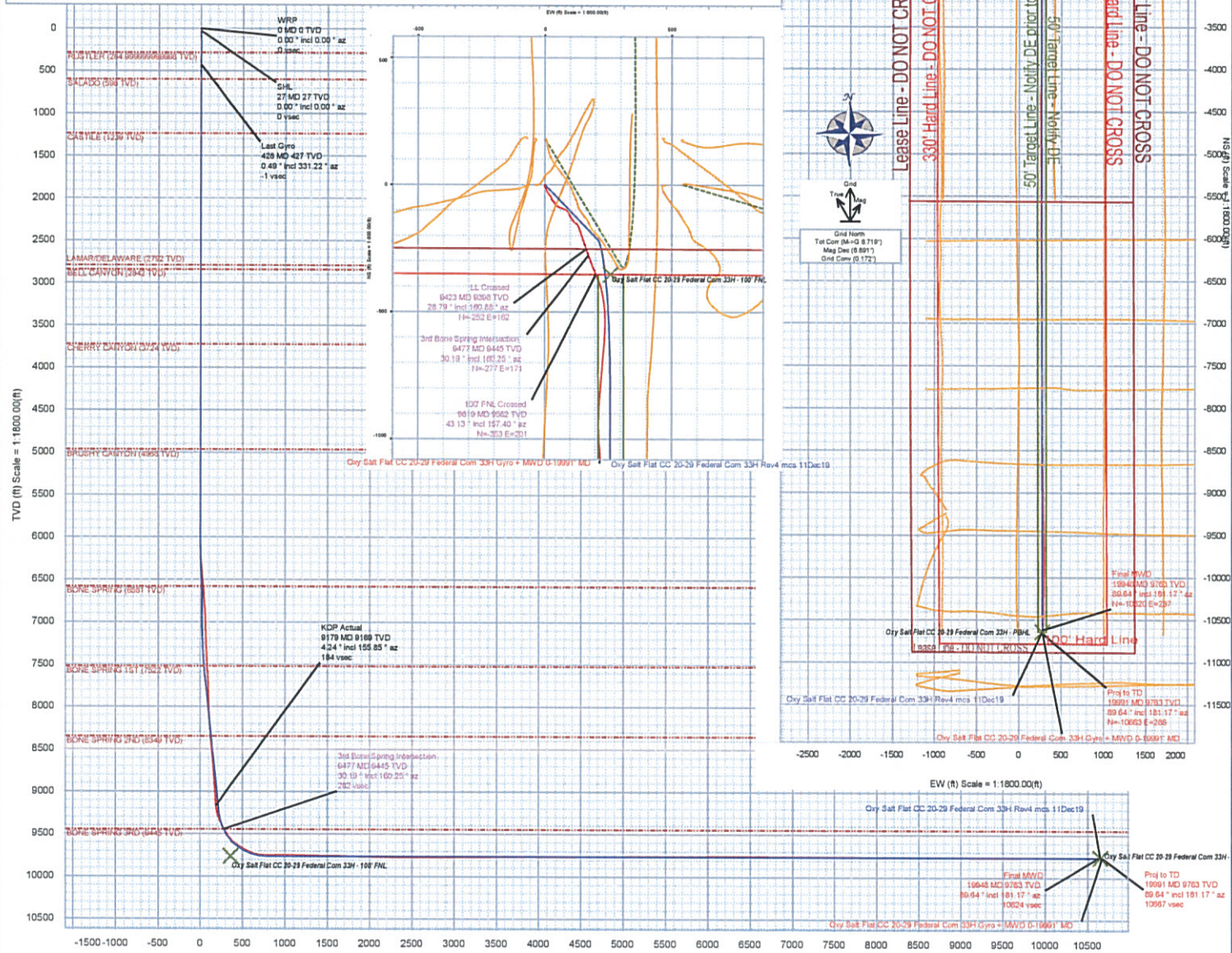
OXY



Borehole:	Well:	Field:	Structure:
Original Borehole	Oxy Salt Flat CC 20-29 Federal Com 33H	NM Eddy County (NAD 83)	Oxy Salt Flat CC 20-29 Federal Com 33H

Gravity & Magnetic Parameters				Surface Location				Miscellaneous			
Model:	FR1	Dip:	59.918°	Date:	09-Dec-2019	Lat:	N 32 12 39.72	Northings:	440857.34RUS	Grid Conv:	0.1719°
MagDec:	6.991°	FS:	47847.8nT	Gravity FS:	998.467mgn (8.00665 Based)	Lon:	W 104 0 39.35	Easting:	641049.55RUS	Scale Fact:	0.99992048
								Oxy Salt Flat CC 20-29 Federal Com 33H Gyro + MWD 0-19991' MD			

Critical Points							
Critical Point	MD	INCL	AZIM	TVD	VSEC	N(+)/S(-)	E(+)/W(-)
WRP	0.00	0.00	0.00	0.00	0.00	0.00	0.00
SHL	26.50	0.00	0.00	26.50	0.00	0.00	0.00
Last Gyro	427.50	0.49	331.22	427.49	-0.58	0.54	-1.35
KOP Actual	9179.00	4.24	155.85	9168.94	183.64	-180.08	137.93
LL Crossed	9423.00	28.79	160.88	9398.18	256.59	-252.42	162.34
3rd Bone Spring Intersection	9476.94	30.19	160.25	9445.20	281.76	-277.36	171.09
100' FNL Crossed	9619.00	43.13	157.40	9561.52	357.92	-352.78	200.66
Final MWD	19948.00	89.64	181.17	9763.06	10624.26	-10620.39	286.76
Proj to TD	19991.00	89.64	181.17	9763.33	10667.21	-10663.38	285.89





# Oxy Salt Flat CC 20-29 Federal Com 33H Gyro + MWD 0-19991' MD Survey

## Geodetic Report

(Def Survey)

<b>Report Date:</b>	January 20, 2020 - 02:16 PM	<b>Survey / DLS Computation:</b>	Minimum Curvature / Lubinski
<b>Client:</b>	OXY	<b>Vertical Section Azimuth:</b>	178.496 ° (Grid North)
<b>Field:</b>	NM Eddy County (NAD 83)	<b>Vertical Section Origin:</b>	0.000 ft, 0.000 ft
<b>Structure / Slot:</b>	Oxy Salt Flat CC 20-29 Federal Com 33H / Oxy Salt Flat CC 20-29 Federal Com 33H	<b>TVD Reference Datum:</b>	RKB
<b>Well:</b>	Oxy Salt Flat CC 20-29 Federal Com 33H	<b>TVD Reference Elevation:</b>	2968.200 ft above MSL
<b>Borehole:</b>	Original Borehole	<b>Seabed / Ground Elevation:</b>	2941.700 ft above MSL
<b>UWI / API#:</b>	Unknown / 30-015-45082	<b>Magnetic Declination:</b>	6.891 °
<b>Survey Name:</b>	Oxy Salt Flat CC 20-29 Federal Com 33H Gyro + MWD 0-19991' MD	<b>Total Gravity Field Strength:</b>	998.4672mgn (9.80665 Based)
<b>Survey Date:</b>	November 27, 2019	<b>Gravity Model:</b>	GARM
<b>Tort / AHD / DDI / ERD Ratio:</b>	228.966 ° / 10757.639 ft / 6.702 / 1.101	<b>Total Magnetic Field Strength:</b>	47847.600 nT
<b>Coordinate Reference System:</b>	NAD83 New Mexico State Plane, Eastern Zone, US Feet	<b>Magnetic Dip Angle:</b>	59.919 °
<b>Location Lat / Long:</b>	N 32° 12' 39.71803", W 104° 0' 39.34543"	<b>Declination Date:</b>	December 09, 2019
<b>Location Grid N/E Y/X:</b>	N 440657.340 NUS, E 641049.550 NUS	<b>Magnetic Declination Model:</b>	IFR1
<b>CRS Grid Convergence Angle:</b>	0.1719 °	<b>North Reference:</b>	Grid North
<b>Grid Scale Factor:</b>	0.99992048	<b>Grid Convergence Used:</b>	0.1719 °
<b>Version / Patch:</b>	2.10.782.0	<b>Total Corr Mag North-&gt;Grid North:</b>	6.7191 °
		<b>Local Coord Referenced To:</b>	Well Head

Comments	MD (ft)	Incl (°)	Azim Grid (°)	TVD (ft)	VSEC (ft)	NS (ft)	EW (ft)	DLS (°/100ft)	Northing (ftUS)	Easting (ftUS)	Latitude (N/S ° ' ")	Longitude (E/W ° ' ")
WRP SHL	0.00	0.00	0.00	0.00	0.00	0.00	0.00	N/A	440657.34	641049.55	N 32 12 39.72	W 104 0 39.35
	26.50	0.00	0.00	26.50	0.00	0.00	0.00	0.00	440657.34	641049.55	N 32 12 39.72	W 104 0 39.35
	114.50	0.18	230.72	114.50	0.08	-0.09	-0.11	0.20	440657.25	641049.44	N 32 12 39.72	W 104 0 39.35
	141.50	0.22	207.30	141.50	0.16	-0.16	-0.16	0.33	440657.18	641049.39	N 32 12 39.72	W 104 0 39.35
	168.50	0.24	203.38	168.50	0.25	-0.26	-0.21	0.09	440657.08	641049.34	N 32 12 39.72	W 104 0 39.35
	193.50	0.30	229.05	193.50	0.34	-0.35	-0.28	0.36	440656.99	641049.27	N 32 12 39.71	W 104 0 39.35
	220.50	0.30	247.50	220.50	0.41	-0.42	-0.40	0.36	440656.92	641049.15	N 32 12 39.71	W 104 0 39.35
	249.50	0.29	275.54	249.50	0.43	-0.44	-0.54	0.49	440656.90	641049.01	N 32 12 39.71	W 104 0 39.35
	281.50	0.34	301.47	281.50	0.37	-0.39	-0.70	0.47	440656.95	641048.85	N 32 12 39.71	W 104 0 39.35
	312.50	0.43	318.19	312.50	0.23	-0.25	-0.86	0.46	440657.09	641048.69	N 32 12 39.72	W 104 0 39.36
	344.50	0.46	327.58	344.50	0.03	-0.05	-1.01	0.25	440657.29	641048.54	N 32 12 39.72	W 104 0 39.36
	375.50	0.47	328.40	375.50	-0.19	0.16	-1.14	0.04	440657.50	641048.41	N 32 12 39.72	W 104 0 39.36
	407.50	0.49	333.34	407.49	-0.43	0.39	-1.27	0.14	440657.73	641048.28	N 32 12 39.72	W 104 0 39.36
Last Gyro	427.50	0.49	331.22	427.49	-0.58	0.54	-1.35	0.09	440657.88	641048.20	N 32 12 39.72	W 104 0 39.36
	534.00	0.20	12.79	533.99	-1.16	1.12	-1.53	0.34	440658.46	641048.02	N 32 12 39.73	W 104 0 39.36
	625.00	0.17	78.71	624.99	-1.34	1.31	-1.36	0.22	440658.65	641048.19	N 32 12 39.73	W 104 0 39.36
	715.00	0.20	186.36	714.99	-1.21	1.18	-1.25	0.33	440658.52	641048.30	N 32 12 39.73	W 104 0 39.36
	806.00	0.13	302.29	805.99	-1.11	1.07	-1.35	0.31	440658.41	641048.20	N 32 12 39.73	W 104 0 39.36
	896.00	0.20	215.20	895.99	-1.04	1.00	-1.53	0.26	440658.34	641048.02	N 32 12 39.73	W 104 0 39.36
	986.00	0.20	75.40	985.99	-0.95	0.91	-1.47	0.42	440658.25	641048.08	N 32 12 39.73	W 104 0 39.36
	1078.00	0.19	290.22	1077.99	-1.04	1.00	-1.46	0.40	440658.34	641048.09	N 32 12 39.73	W 104 0 39.36
	1169.00	0.17	31.94	1168.99	-1.21	1.17	-1.53	0.31	440658.51	641048.02	N 32 12 39.73	W 104 0 39.36
	1260.00	0.20	293.21	1259.99	-1.39	1.35	-1.60	0.31	440658.69	641047.95	N 32 12 39.73	W 104 0 39.36
	1350.00	0.13	151.71	1349.99	-1.36	1.32	-1.70	0.35	440658.66	641047.85	N 32 12 39.73	W 104 0 39.37
	1441.00	0.20	318.77	1440.99	-1.39	1.35	-1.75	0.36	440658.69	641047.80	N 32 12 39.73	W 104 0 39.37
	1531.00	0.17	40.20	1530.99	-1.61	1.57	-1.77	0.27	440658.91	641047.78	N 32 12 39.73	W 104 0 39.37
	1716.00	0.17	143.01	1715.99	-1.60	1.56	-1.43	0.14	440658.90	641048.12	N 32 12 39.73	W 104 0 39.36
	1811.00	0.17	98.97	1810.99	-1.46	1.42	-1.20	0.13	440658.76	641048.35	N 32 12 39.73	W 104 0 39.36
	1906.00	0.17	114.54	1905.99	-1.37	1.34	-0.94	0.05	440658.68	641048.61	N 32 12 39.73	W 104 0 39.36
	2001.00	0.16	258.55	2000.99	-1.28	1.26	-0.94	0.33	440658.60	641048.61	N 32 12 39.73	W 104 0 39.36
	2095.00	0.20	212.13	2094.99	-1.12	1.09	-1.15	0.16	440658.43	641048.40	N 32 12 39.73	W 104 0 39.36
	2190.00	0.17	22.79	2189.99	-1.11	1.08	-1.19	0.39	440658.42	641048.36	N 32 12 39.73	W 104 0 39.36
	2284.00	0.20	240.62	2283.99	-1.16	1.13	-1.28	0.37	440658.47	641048.27	N 32 12 39.73	W 104 0 39.36
	2379.00	0.10	349.36	2378.99	-1.17	1.13	-1.44	0.26	440658.47	641048.11	N 32 12 39.73	W 104 0 39.36
	2473.00	0.10	341.50	2472.99	-1.33	1.29	-1.48	0.01	440658.63	641048.07	N 32 12 39.73	W 104 0 39.36
	2568.00	0.20	176.59	2567.99	-1.24	1.20	-1.49	0.31	440658.54	641048.06	N 32 12 39.73	W 104 0 39.36
	2662.00	0.14	93.75	2661.99	-1.07	1.03	-1.37	0.24	440658.37	641048.18	N 32 12 39.73	W 104 0 39.36
	2757.00	0.20	202.80	2756.99	-0.91	0.87	-1.32	0.29	440658.21	641048.23	N 32 12 39.73	W 104 0 39.36
	2852.00	0.17	94.55	2851.99	-0.74	0.71	-1.24	0.32	440658.05	641048.31	N 32 12 39.73	W 104 0 39.36
	2946.00	0.21	332.73	2945.98	-0.88	0.85	-1.18	0.35	440658.19	641048.37	N 32 12 39.73	W 104 0 39.36
	3041.00	0.20	295.43	3040.98	-1.11	1.08	-1.41	0.14	440658.42	641048.14	N 32 12 39.73	W 104 0 39.36
	3136.00	0.21	204.59	3135.98	-1.03	0.99	-1.63	0.31	440658.33	641047.92	N 32 12 39.73	W 104 0 39.36
	3230.00	0.20	163.22	3229.98	-0.72	0.67	-1.66	0.15	440658.01	641047.89	N 32 12 39.72	W 104 0 39.36
	3420.00	0.20	167.13	3419.98	-0.07	0.03	-1.49	0.01	440657.37	641048.06	N 32 12 39.72	W 104 0 39.36
	3514.00	0.17	262.68	3513.98	0.10	-0.14	-1.59	0.29	440657.20	641047.96	N 32 12 39.72	W 104 0 39.36
	3609.00	0.17	338.08	3608.98	-0.02	-0.03	-1.78	0.22	440657.31	641047.77	N 32 12 39.72	W 104 0 39.37
	3797.00	0.17	12.86	3796.98	-0.55	0.50	-1.82	0.05	440657.84	641047.73	N 32 12 39.72	W 104 0 39.37
	3892.00	0.17	173.98	3891.98	-0.54	0.50	-1.78	0.35	440657.84	641047.77	N 32 12 39.72	W 104 0 39.37
	4081.00	0.20	336.64	4080.98	-0.57	0.52	-1.88	0.19	440657.86	641047.67	N 32 12 39.72	W 104 0 39.37
	4271.00	0.21	356.84	4270.98	-1.23	1.17	-2.03	0.04	440658.51	641047.52	N 32 12 39.73	W 104 0 39.37
	4365.00	0.17	150.73	4364.98	-1.27	1.22	-1.97	0.39	440658.56	641047.58	N 32 12 39.73	W 104 0 39.37
	4460.00	0.17	256.78	4459.98	-1.12	1.07	-2.04	0.29	440658.41	641047.51	N 32 12 39.73	W 104 0 39.37
	4555.00	0.13	80.71	4554.98	-1.11	1.05	-2.07	0.32	440658.39	641047.48	N 32 12 39.73	W 104 0 39.37
4649.00	0.20	316.34	4648.98	-1.24	1.19	-2.08	0.31	440658.53	641047.47	N 32 12 39.73	W 104 0 39.37	
4744.00	0.17	230.39	4743.98	-1.28	1.22	-2.30	0.27	440658.56	641047.25	N 32 12 39.73	W 104 0 39.37	
4933.00	0.21	359.61	4932.98	-1.45	1.39	-2.52	0.18	440658.73	641047.03	N 32 12 39.73	W 104 0 39.37	
5028.00	0.20	286.12	5027.98	-1.68	1.61	-2.68	0.26	440658.95	641046.87	N 32 12 39.73	W 104 0 39.38	
5123.00	0.20	315.18	5122.98	-1.85	1.77	-2.96	0.11	440659.11	641046.59	N 32 12 39.74	W 104 0 39.38	
5217.00	0.16	304.33	5216.98	-2.04	1.96	-3.18	0.06	440659.30	641046.37	N 32 12 39.74	W 104 0 39.38	
5407.00	0.16	93.54	5406.98	-2.18	2.09	-3.14	0.16	440659.43	641046.41	N 32 12 39.74	W 104 0 39.38	
5501.00	0.19	144.33	5500.98	-2.04	1.96	-2.91	0.16	440659.30	641046.64	N 32 12 39.74	W 104 0 39.38	
5595.00	0.17	249.45	5594.98	-1.86	1.78	-2.95	0.30	440659.12	641046.60	N 32 12 39.74	W 104 0 39.38	
5690.00	0.16	157.57	5689.97	-1.69	1.61	-3.03	0.25	440658.95	641046.52	N 32 12 39.73	W 104 0 39.38	
5785.00	0.13	32.25	5784.97	-1.66	1.58	-2.93	0.27	440658.92	641046.62	N 32 12 39.73	W 104 0 39.38	
5879.00	0.22	145.41	5878.97	-1.59	1.52	-2.77	0.32	440658.86	641046.78	N 32 12 39.73	W 104 0 39.38	
5974.00	0.17	269.16	5973.97	-1.44	1.37	-2.80	0.36	440658.71	641046.75	N 32 12 39.73	W 104 0 39.38	
6068.00	0.37	168.94	6067.97	-1.15	1.07	-2.89	0.46	440658.41	641046.66	N 32 12 39.73	W 104 0 39.38	
6163.00	2.23	166.58	6162.94	0.97	-1.03	-2.40	1.96	440656.31	641047.15	N 32 12 39.71	W 104 0 39.37	
6352.00	5.18	159.36	6351.53	12.63	-12.59	1.46	1.58	440644.75	641051.01	N 32 12 39.59	W 104 0 39.33	
6447.00	5.92	152.06	6446.09	21.07	-20.93	5.27	1.08	440636.41	641053.62	N 32 12 39.51	W 104 0 39.28	
6541.00	5.59	149.84	6539.61	29.42	-29.18	9.84	0.42	440628.17	641059.39	N 32 12 39.43	W 104 0 39.23	
6636.00	5.53	144.28	6634.17	37.27	-36.89	14.84	0.57	440620.45	641064.39	N 32 12 39.35	W 104 0 39.17	
6731.00	5.27	140.51	6728.74	44.49	-43.98	20.29	0.46	440613.37	641069.84	N 32 12 39.28	W 104 0 39.11	
6825.00	3.27	149.94	6822.48	50.25	-49.63	24.38	2.25	440607.72	641073.92	N 32 12 39.23	W 104 0 39.06	
6920.00	2.15	193.64	6917.38	54.35	-53.71	25.31	2.39	440603.64	641074.86	N 32 12 39.19	W 104 0 39.05	
7015.00	1.82	169.66	7012.33	57.56	-56.92	25.16	0.93	440600.42	641074.71	N 32 12 39.15	W 104 0 39.05	
7109.00	2.28	139.00	7106.27	60.48	-59.80	26.66	1.25	440597.54	641076.21	N 32 12 39.13	W 104 0 39.04	

Comments	MD (ft)	Incl (°)	Azim Grid (°)	TVD (ft)	VSEC (ft)	NS (ft)	EW (ft)	DLS (°/100ft)	Northing (ftUS)	Easting (ftUS)	Latitude (N/S ° ' '')	Longitude (E/W ° ' '')
	7204.00	2.93	133.61	7201.17	63.66	-62.90	29.66	0.73	440594.44	641079.20	N 32 12 39.09 W 104	0 39.00
	7298.00	2.83	139.20	7295.05	67.16	-66.32	32.91	0.32	440591.03	641082.46	N 32 12 39.06 W 104	0 38.96
	7393.00	3.37	144.23	7389.91	71.28	-70.36	36.08	0.64	440586.99	641085.62	N 32 12 39.02 W 104	0 38.93
	7488.00	4.38	148.49	7484.69	76.73	-75.72	39.60	1.10	440581.63	641089.15	N 32 12 38.97 W 104	0 38.89
	7583.00	4.94	135.16	7579.38	82.85	-81.71	44.38	1.28	440575.64	641093.93	N 32 12 38.91 W 104	0 38.83
	7677.00	5.04	120.21	7673.03	87.96	-86.66	50.81	1.38	440570.69	641100.35	N 32 12 38.86 W 104	0 38.76
	7772.00	4.94	107.54	7767.67	91.49	-89.99	58.31	1.16	440567.36	641107.86	N 32 12 38.83 W 104	0 38.67
	7867.00	5.49	108.46	7862.28	94.37	-92.66	66.52	0.59	440564.69	641116.07	N 32 12 38.80 W 104	0 38.57
	7961.00	4.98	112.93	7955.89	97.60	-95.67	74.55	0.69	440561.67	641124.09	N 32 12 38.77 W 104	0 38.48
	8056.00	4.71	121.49	8050.55	101.43	-99.32	81.67	0.81	440558.03	641131.21	N 32 12 38.73 W 104	0 38.40
	8151.00	4.50	136.53	8145.24	106.32	-104.06	87.56	1.29	440553.29	641137.10	N 32 12 38.69 W 104	0 38.33
	8245.00	4.76	152.53	8238.94	112.57	-110.20	91.90	1.40	440547.15	641141.44	N 32 12 38.62 W 104	0 38.28
	8340.00	5.11	153.71	8333.59	119.96	-117.49	95.59	0.38	440539.86	641145.13	N 32 12 38.55 W 104	0 38.24
	8434.00	5.68	149.93	8427.17	127.84	-125.27	99.77	0.71	440532.08	641149.32	N 32 12 38.48 W 104	0 38.19
	8528.00	6.32	141.26	8518.14	144.43	-141.56	111.03	0.58	440515.79	641160.57	N 32 12 38.31 W 104	0 38.06
	8624.00	6.79	129.46	8709.52	152.19	-149.13	118.58	1.51	440508.22	641168.10	N 32 12 38.24 W 104	0 37.97
	8718.00	5.41	129.76	8803.98	158.82	-159.56	126.34	1.45	440501.79	641175.88	N 32 12 38.17 W 104	0 37.88
	8813.00	3.37	158.59	8897.71	164.35	-169.07	130.75	3.13	440496.38	641180.29	N 32 12 38.12 W 104	0 37.83
	8907.00	4.57	161.30	8992.49	170.59	-167.15	132.99	1.28	440490.20	641182.53	N 32 12 38.06 W 104	0 37.80
	9002.00	4.48	158.78	9086.19	177.62	-174.12	135.52	0.23	440483.23	641185.05	N 32 12 37.99 W 104	0 37.77
	9100.00	4.52	158.51	9130.06	180.87	-177.34	136.77	0.10	440480.02	641186.31	N 32 12 37.96 W 104	0 37.75
	9179.00	4.24	155.85	9168.94	183.64	-180.08	137.93	0.89	440477.27	641187.46	N 32 12 37.93 W 104	0 37.75
	9274.00	15.15	162.55	9262.45	198.87	-195.18	143.10	11.53	440462.18	641192.64	N 32 12 37.78 W 104	0 37.69
	9368.00	27.78	161.23	9349.75	231.73	-227.77	153.88	13.45	440429.59	641203.41	N 32 12 37.46 W 104	0 37.56
LL Crossed	9423.00	28.79	160.88	9398.18	256.59	-252.42	162.34	1.86	440404.94	641211.88	N 32 12 37.22 W 104	0 37.46
	9462.00	29.51	160.64	9432.24	274.69	-270.35	168.60	1.86	440387.01	641218.14	N 32 12 37.04 W 104	0 37.39
3rd Bone Spring Intersection	9476.94	30.19	160.25	9445.20	281.76	-277.36	171.09	4.72	440380.00	641220.63	N 32 12 36.97 W 104	0 37.36
100' FNL Crossed	9556.00	33.79	158.41	9512.25	321.29	-316.52	185.90	4.72	440340.84	641235.44	N 32 12 36.58 W 104	0 37.19
	9619.00	43.13	157.40	9561.52	357.92	-352.78	200.66	14.86	440304.59	641250.19	N 32 12 36.22 W 104	0 37.02
	9650.00	47.73	157.03	9583.27	378.49	-373.13	209.21	14.86	440284.24	641258.74	N 32 12 36.02 W 104	0 36.92
	9744.00	58.24	170.06	9639.94	450.79	-444.91	229.79	15.70	440212.46	641279.32	N 32 12 35.31 W 104	0 36.69
	9839.00	60.33	178.94	9688.53	532.14	-526.09	237.54	8.33	440131.29	641287.07	N 32 12 34.51 W 104	0 36.60
	9928.00	69.60	184.28	9726.17	612.53	-606.56	235.14	11.74	440050.83	641284.67	N 32 12 33.71 W 104	0 36.63
	10027.00	85.26	185.16	9747.65	708.28	-702.56	227.19	15.84	439954.84	641276.72	N 32 12 32.76 W 104	0 36.73
	10174.00	92.01	184.17	9751.15	854.30	-848.95	215.24	4.64	439808.46	641264.78	N 32 12 31.31 W 104	0 36.87
	10268.00	90.23	179.75	9749.31	948.09	-942.85	212.03	5.07	439714.57	641251.56	N 32 12 30.38 W 104	0 36.91
	10361.00	89.47	176.12	9749.56	1041.06	-1035.77	215.38	3.99	439621.66	641254.91	N 32 12 29.46 W 104	0 36.87
	10454.00	88.37	176.10	9751.31	1133.97	-1128.54	221.69	1.18	439528.90	641271.22	N 32 12 28.54 W 104	0 36.80
	10547.00	88.71	178.30	9753.68	1226.91	-1221.39	226.23	2.39	439436.05	641275.76	N 32 12 27.63 W 104	0 36.76
	10640.00	88.92	177.63	9755.60	1319.88	-1314.31	229.53	0.75	439343.14	641279.06	N 32 12 26.71 W 104	0 36.72
	10734.00	88.88	177.81	9757.41	1413.86	-1408.22	233.27	0.20	439249.24	641282.80	N 32 12 25.78 W 104	0 36.68
	10827.00	89.92	176.80	9758.38	1506.83	-1501.11	237.64	1.56	439156.35	641287.18	N 32 12 24.86 W 104	0 36.63
	10920.00	89.50	175.12	9758.85	1599.73	-1593.87	244.20	1.86	439063.60	641293.73	N 32 12 23.94 W 104	0 36.56
	11013.00	87.68	176.93	9761.14	1692.61	-1686.61	250.64	2.76	438970.87	641300.17	N 32 12 23.02 W 104	0 36.49
	11106.00	88.71	177.23	9764.07	1785.53	-1779.44	255.38	1.15	438878.04	641304.91	N 32 12 22.10 W 104	0 36.44
	11199.00	89.16	178.59	9765.80	1878.51	-1872.36	258.77	1.54	438785.13	641308.30	N 32 12 21.18 W 104	0 36.40
	11292.00	88.64	179.62	9767.59	1971.49	-1965.33	260.22	1.24	438692.17	641309.75	N 32 12 20.26 W 104	0 36.39
	11385.00	89.50	179.32	9769.09	2064.46	-2058.32	261.08	0.98	438599.19	641310.61	N 32 12 19.34 W 104	0 36.38
	11478.00	89.23	179.27	9770.13	2157.44	-2151.30	262.22	0.30	438506.21	641311.75	N 32 12 18.42 W 104	0 36.37
	11572.00	88.78	178.46	9771.76	2251.43	-2245.27	264.09	0.99	438412.25	641313.61	N 32 12 17.49 W 104	0 36.35
	11665.00	89.78	180.62	9772.93	2344.40	-2338.25	264.83	2.56	438319.28	641314.36	N 32 12 16.57 W 104	0 36.34
	11758.00	90.23	178.61	9772.92	2437.38	-2431.25	265.46	2.21	438226.29	641314.99	N 32 12 15.65 W 104	0 36.34
	11851.00	90.16	179.97	9772.60	2530.36	-2524.24	266.61	1.46	438133.31	641316.14	N 32 12 14.73 W 104	0 36.33
	11945.00	89.68	179.62	9772.73	2624.34	-2618.23	266.95	0.63	438039.32	641316.47	N 32 12 13.80 W 104	0 36.33
	12038.00	90.26	179.64	9772.78	2717.32	-2711.23	267.55	0.62	437946.33	641317.07	N 32 12 12.88 W 104	0 36.33
	12131.00	89.68	181.34	9772.83	2810.26	-2804.23	266.75	1.93	437853.34	641316.28	N 32 12 11.96 W 104	0 36.34
	12218.00	91.02	179.79	9771.89	2907.13	-2891.20	264.91	1.10	437766.38	641314.44	N 32 12 10.11 W 104	0 36.37
	12311.00	90.43	179.79	9770.51	3000.09	-3004.19	265.25	0.63	437673.40	641314.78	N 32 12 9.19 W 104	0 36.37
	12404.00	90.19	180.66	9770.01	3183.05	-3177.19	264.88	0.97	437580.41	641314.41	N 32 12 8.27 W 104	0 36.37
	12497.00	90.26	179.44	9769.64	3276.01	-3270.19	264.80	1.31	437487.42	641313.33	N 32 12 7.35 W 104	0 36.38
	12590.00	90.60	179.49	9768.24	3462.98	-3457.17	266.55	0.18	437394.43	641312.08	N 32 12 6.43 W 104	0 36.36
	12683.00	90.12	180.82	9767.86	3555.94	-3550.17	266.30	1.52	437301.44	641310.82	N 32 12 5.50 W 104	0 36.36
	12776.00	89.78	181.19	9767.74	3647.85	-3642.16	264.68	0.55	437208.45	641309.57	N 32 12 4.58 W 104	0 36.37
	12869.00	90.78	178.96	9767.27	3742.80	-3737.15	264.56	2.57	437115.46	641308.30	N 32 12 3.67 W 104	0 36.39
	12962.00	90.74	179.60	9766.01	3837.79	-3832.13	265.75	0.67	437022.47	641307.05	N 32 12 2.75 W 104	0 36.40
	13055.00	89.74	179.71	9765.62	3931.76	-3926.13	266.32	1.07	436929.48	641305.80	N 32 12 1.79 W 104	0 36.39
	13148.00	89.64	182.21	9766.65	4121.57	-4116.08	263.13	1.32	436836.49	641304.55	N 32 12 0.86 W 104	0 36.38
	13241.00	89.88	181.55	9767.44	4311.24	-4305.98	256.90	0.37	436743.50	641303.30	N 32 11 59.98 W 104	0 36.43
	13334.00	91.15	179.72	9766.60	4405.16	-4399.96	255.86	2.37	436650.51	641302.05	N 32 11 57.10 W 104	0 36.51
	13427.00	90.67	179.91	9765.09	4500.12	-4494.95	256.17	1.54	436557.52	641300.80	N 32 11 56.17 W 104	0 36.52
	13520.00	89.47	178.69	9764.97	4595.11	-4589.94	257.33	1.80	436464.53	641299.55	N 32 11 55.23 W 104	0 36.51
	13613.00	90.05	179.90	9765.37	4690.10	-4684.93	258.50	1.41	436371.54	641298.30	N 32 11 54.29 W 104	0 36.50
	13706.00	90.36	180.35	9765.03	4784.06	-4778.93	258.29	0.58	436278.55	641297.05	N 32 11 53.35 W 104	0 36.51
	13799.00	90.36	179.63	9764.44	4879.03	-4873.92	258.31	0.76	436185.56	641295.80	N 32 11 52.42 W 104	0 36.51
	13892.00	90.95	179.66	9763.36	4973.00	-4967.92	258.89	0.63	436092.57	641294.55	N 32 11 51.48 W 104	0 36.51
	13985.00	90.60	179.24	9762.08	5067.98	-5062.90	259.80	0.58	435999.58	641293.30	N 32 11 50.55 W 104	0 36.51
	14078.00	90.84	179.47	9760.88	5162.96	-5157.89	260.87	0.35	435906.59	64		



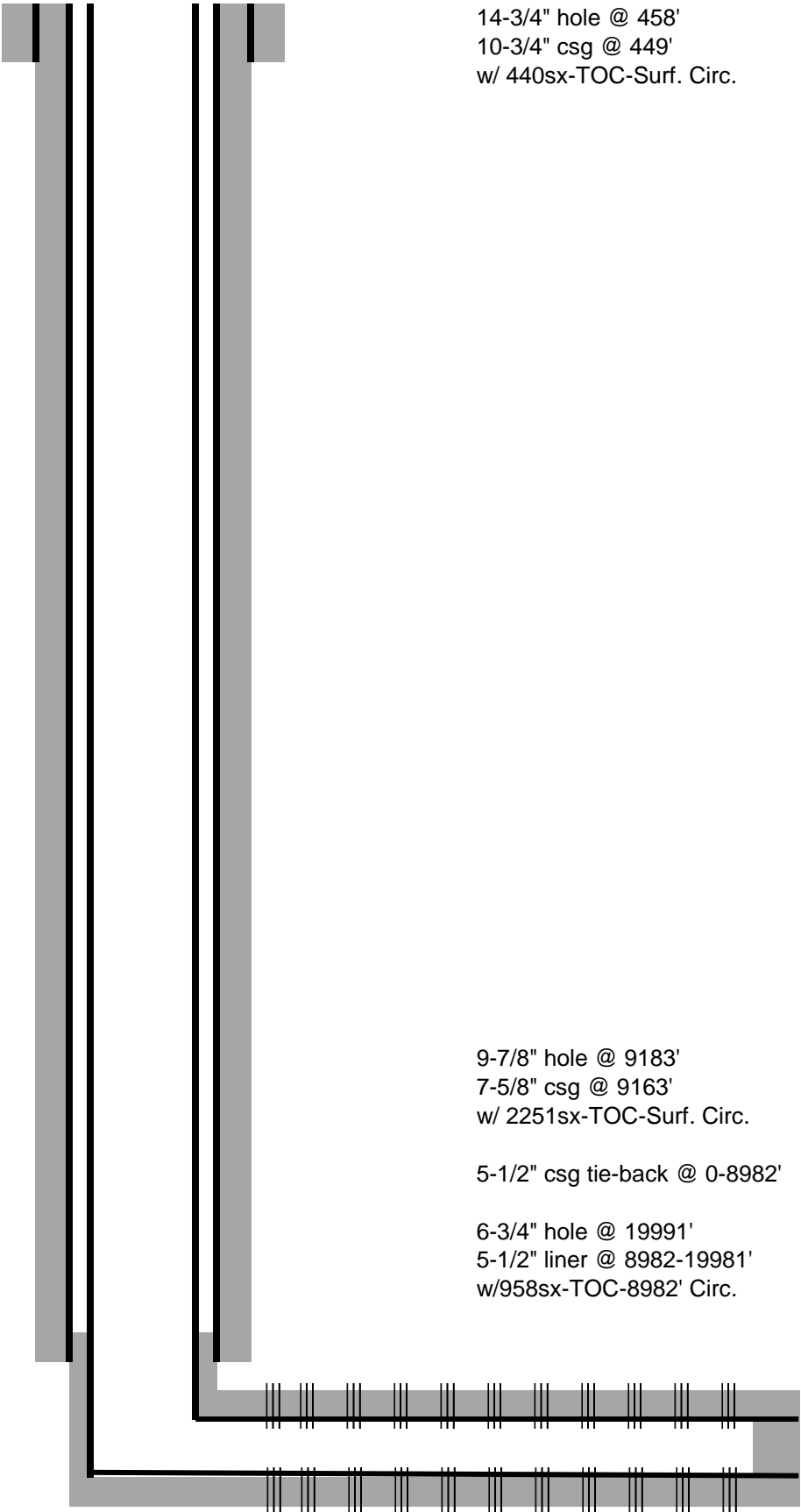
Comments	MD (ft)	Incl (°)	Azim Grid (°)	TVD (ft)	VSEC (ft)	NS (ft)	EW (ft)	DLS (°/100ft)	Northing (ftUS)	Easting (ftUS)	Latitude (N/S ° ' ")	Longitude (E/W ° ' ")
	17414.00	89.68	179.49	9764.88	8091.28	-8086.75	278.54	0.37	432571.25	641328.07	N 32 11 19.69 W 104	0 36.39
	17508.00	90.12	179.63	9765.04	8185.26	-8180.75	279.27	0.49	432477.26	641328.79	N 32 11 18.76 W 104	0 36.38
	17602.00	90.40	179.43	9764.62	8279.24	-8274.74	280.04	0.37	432383.27	641329.56	N 32 11 17.83 W 104	0 36.38
	17696.00	89.95	179.60	9764.33	8373.23	-8368.74	280.83	0.51	432289.28	641330.36	N 32 11 16.90 W 104	0 36.37
	17791.00	89.99	179.49	9764.38	8468.21	-8463.74	281.59	0.12	432194.29	641331.11	N 32 11 15.96 W 104	0 36.36
	17885.00	89.99	179.62	9764.39	8562.20	-8557.73	282.32	0.14	432100.30	641331.84	N 32 11 15.03 W 104	0 36.36
	17979.00	90.02	179.20	9764.39	8656.18	-8651.73	283.29	0.45	432006.32	641332.81	N 32 11 14.10 W 104	0 36.35
	18073.00	89.85	179.27	9764.49	8750.18	-8745.72	284.54	0.20	431912.33	641334.07	N 32 11 13.17 W 104	0 36.34
	18167.00	89.88	179.22	9764.71	8844.17	-8839.71	285.78	0.06	431818.35	641335.31	N 32 11 12.24 W 104	0 36.33
	18261.00	89.74	179.19	9765.03	8938.16	-8933.70	287.08	0.15	431724.37	641336.61	N 32 11 11.31 W 104	0 36.32
	18356.00	89.68	179.09	9765.51	9033.15	-9028.69	288.51	0.12	431629.39	641338.04	N 32 11 10.37 W 104	0 36.30
	18450.00	89.92	179.02	9765.83	9127.15	-9122.68	290.06	0.27	431535.41	641339.59	N 32 11 9.44 W 104	0 36.29
	18545.00	89.81	178.84	9766.06	9222.14	-9217.66	291.83	0.22	431440.43	641341.36	N 32 11 8.50 W 104	0 36.27
	18640.00	89.64	178.97	9766.51	9317.14	-9312.64	293.65	0.23	431345.46	641343.18	N 32 11 7.56 W 104	0 36.25
	18735.00	89.81	178.84	9766.97	9412.14	-9407.62	295.46	0.23	431250.48	641344.99	N 32 11 6.62 W 104	0 36.24
	18829.00	90.36	179.00	9766.83	9506.13	-9501.61	297.24	0.61	431156.51	641346.76	N 32 11 5.69 W 104	0 36.22
	18924.00	90.43	179.17	9766.18	9601.13	-9596.59	298.75	0.19	431061.53	641348.28	N 32 11 4.75 W 104	0 36.20
	19018.00	90.16	178.87	9765.69	9695.12	-9690.58	300.36	0.43	430967.55	641349.89	N 32 11 3.82 W 104	0 36.19
	19113.00	90.09	179.39	9765.49	9790.11	-9785.56	301.80	0.55	430872.57	641351.33	N 32 11 2.88 W 104	0 36.18
	19209.00	90.36	180.74	9765.11	9886.08	-9881.56	301.69	1.43	430776.58	641351.22	N 32 11 1.93 W 104	0 36.18
	19304.00	90.09	181.11	9764.73	9980.99	-9976.55	300.16	0.48	430681.61	641349.69	N 32 11 0.99 W 104	0 36.20
	19398.00	89.71	180.75	9764.90	10074.90	-10070.54	298.64	0.56	430587.63	641348.16	N 32 11 0.06 W 104	0 36.22
	19493.00	90.36	180.81	9764.84	10169.83	-10165.53	297.34	0.69	430492.64	641346.87	N 32 10 59.12 W 104	0 36.24
	19587.00	90.29	181.21	9764.31	10263.74	-10259.51	295.69	0.43	430398.67	641345.21	N 32 10 58.19 W 104	0 36.26
	19682.00	90.43	181.11	9763.71	10358.63	-10354.49	293.76	0.18	430303.70	641343.29	N 32 10 57.25 W 104	0 36.29
	19776.00	90.16	181.25	9763.23	10452.53	-10448.47	291.83	0.32	430209.73	641341.35	N 32 10 56.32 W 104	0 36.31
	19870.00	90.19	182.16	9762.94	10546.38	-10542.42	289.03	0.97	430115.78	641338.56	N 32 10 55.39 W 104	0 36.35
330' FSL												
Crossed	19879.00	90.13	182.05	9762.91	10555.36	-10551.42	288.70	1.45	430106.78	641338.23	N 32 10 55.30 W 104	0 36.35
Final MWD	19948.00	89.64	181.17	9763.06	10624.26	-10620.39	286.76	1.45	430037.82	641336.29	N 32 10 54.62 W 104	0 36.38
Proj to TD	19991.00	89.64	181.17	9763.33	10667.21	-10663.38	285.89	0.00	429994.83	641335.41	N 32 10 54.19 W 104	0 36.39

Survey Type: Def Survey

Survey Error Model: ISCWSA Rev 3 \*\*\* 3-D 95.000% Confidence 2.7955 sigma  
Survey Program:

Description	Part	MD From (ft)	MD To (ft)	EOU Freq (ft)	Hole Size	Casing Diameter (in)	Survey Tool Type	Borehole / Survey
	1	0.000	26.500	1/98.425	26.400	26.400	GYD_GC+DROP+OH-Depth Only	Original Borehole / Oxy Salt Flat CC 20-29 Federal Com 33H Gyro + MWD 0-19991' MD
	1	26.500	26.500	Act Stns	26.400	26.400	GYD_GC+DROP+OH-Depth Only	Original Borehole / Oxy Salt Flat CC 20-29 Federal Com 33H Gyro + MWD 0-19991' MD
	1	26.500	427.500	Act Stns	26.400	26.400	GYD_GC+DROP+OH	Original Borehole / Oxy Salt Flat CC 20-29 Federal Com 33H Gyro Original Borehole / Oxy Salt Flat
	1	427.500	19991.000	Act Stns	26.400	26.400	A010Mb_MWD+IFR1+SAG+MS	CC 20-29 Federal Com 33H Gyro + MWD 0-19991' MD

OXY USA Inc.  
Salt Flat CC 20-29 Federal Com 33H  
API No. 30-015-45082



14-3/4" hole @ 458'  
10-3/4" csg @ 449'  
w/ 440sx-TOC-Surf. Circ.

9-7/8" hole @ 9183'  
7-5/8" csg @ 9163'  
w/ 2251sx-TOC-Surf. Circ.

5-1/2" csg tie-back @ 0-8982'

6-3/4" hole @ 19991'  
5-1/2" liner @ 8982-19981'  
w/958sx-TOC-8982' Circ.

Perfs @ 9847-19828'

TD- 19991'M 9763'V



## WELL COMPLETION OR RECOMPLETION REPORT AND LOG

1a. Type of Well <input checked="" type="checkbox"/> Oil Well <input type="checkbox"/> Gas Well <input type="checkbox"/> Dry <input type="checkbox"/> Other			5. Lease Serial No. NMNM17224		
b. Type of Completion <input checked="" type="checkbox"/> New Well <input type="checkbox"/> Work Over <input type="checkbox"/> Deepen <input type="checkbox"/> Plug Back <input type="checkbox"/> Diff. Resvr. Other _____			6. If Indian, Allottee or Tribe Name		
2. Name of Operator OXY USA INC.			Contact: JANA MENDIOLA E-Mail: janalyn_mendiola@oxy.com		
3. Address P.O. BOX 50250 MIDLAND, TX 79710			3a. Phone No. (include area code) Ph: 432-685-5936		
4. Location of Well (Report location clearly and in accordance with Federal requirements)* At surface Sec 17 T24S R29E Mer NMP SWSW 252FSL 1292FWL 32.211033 N Lat, 104.010933 W Lon At top prod interval reported below Sec 20 T24S R29E Mer NMP NENW 282FNL 1530FWL 32.209560 N Lat, 104.010170 W Lon At total depth Sec 29 T24S R29E Mer NMP SESW 217FSL 1578FWL			8. Lease Name and Well No. SALT FLAT CC 20-29 FEDERAL COM 33H		
14. Date Spudded 11/02/2019			15. Date T.D. Reached 12/22/2019		
16. Date Completed <input type="checkbox"/> D & A <input checked="" type="checkbox"/> Ready to Prod. 03/01/2020			9. API Well No. 30-015-45082		
18. Total Depth: MD 19991 TVD 9763			19. Plug Back T.D.: MD 19948 TVD 9763		
20. Depth Bridge Plug Set: MD TVD			10. Field and Pool, or Exploratory PIERCE CROSSING BONE SPRG		
21. Type Electric & Other Mechanical Logs Run (Submit copy of each) GAMMA RAY			11. Sec., T., R., M., or Block and Survey or Area Sec 17 T24S R29E Mer NMP		
22. Was well cored? <input checked="" type="checkbox"/> No <input type="checkbox"/> Yes (Submit analysis) Was DST run? <input checked="" type="checkbox"/> No <input type="checkbox"/> Yes (Submit analysis) Directional Survey? <input type="checkbox"/> No <input checked="" type="checkbox"/> Yes (Submit analysis)			12. County or Parish EDDY		
23. Casing and Liner Record (Report all strings set in well)			13. State NM		
17. Elevations (DF, KB, RT, GL)* 2942 GL					

Hole Size	Size/Grade	Wt. (#/ft.)	Top (MD)	Bottom (MD)	Stage Cementer Depth	No. of Sk. & Type of Cement	Slurry Vol. (BBL)	Cement Top*	Amount Pulled
14.750	10.750 J55	45.5	0	449		440	106	0	
9.875	7.625 HCL80	26.4	0	9163		2251	708	0	
6.750	5.500 P110	20.0	8982	19981		958	235	8982	

Size	Depth Set (MD)	Packer Depth (MD)	Size	Depth Set (MD)	Packer Depth (MD)	Size	Depth Set (MD)	Packer Depth (MD)

Formation	Top	Bottom	Perforated Interval	Size	No. Holes	Perf. Status
A) 3RD BONE SPRING	9847	19828	9847 TO 19828	0.420	1600	ACTIVE
B)						
C)						
D)						

Depth Interval	Amount and Type of Material
9847 TO 19828	11165448G SLICK WATER + 15099361# SAND

Date First Produced	Test Date	Hours Tested	Test Production	Oil BBL	Gas MCF	Water BBL	Oil Gravity Corr. API	Gas Gravity	Production Method
03/11/2020	03/26/2020	24	→	2691.0	4612.0	6130.0			FLows FROM WELL
Choke Size	Tbg. Press. Flwg.	Csg. Press.	24 Hr. Rate	Oil BBL	Gas MCF	Water BBL	Gas:Oil Ratio	Well Status	
128/128	SI	1568.0	→	2961	4612	6130	1714	POW	

Date First Produced	Test Date	Hours Tested	Test Production	Oil BBL	Gas MCF	Water BBL	Oil Gravity Corr. API	Gas Gravity	Production Method
			→						
Choke Size	Tbg. Press. Flwg.	Csg. Press.	24 Hr. Rate	Oil BBL	Gas MCF	Water BBL	Gas:Oil Ratio	Well Status	
	SI		→						

(See Instructions and spaces for additional data on reverse side)

ELECTRONIC SUBMISSION #514076 VERIFIED BY THE BLM WELL INFORMATION SYSTEM

\*\* OPERATOR-SUBMITTED \*\* OPERATOR-SUBMITTED \*\* OPERATOR-SUBMITTED \*\*

28b. Production - Interval C									
Date First Produced	Test Date	Hours Tested	Test Production →	Oil BBL	Gas MCF	Water BBL	Oil Gravity Corr. API	Gas Gravity	Production Method
Choke Size	Tbg. Press. Flwg. SI	Csg. Press.	24 Hr. Rate →	Oil BBL	Gas MCF	Water BBL	Gas:Oil Ratio	Well Status	

28c. Production - Interval D									
Date First Produced	Test Date	Hours Tested	Test Production →	Oil BBL	Gas MCF	Water BBL	Oil Gravity Corr. API	Gas Gravity	Production Method
Choke Size	Tbg. Press. Flwg. SI	Csg. Press.	24 Hr. Rate →	Oil BBL	Gas MCF	Water BBL	Gas:Oil Ratio	Well Status	

29. Disposition of Gas(*Sold, used for fuel, vented, etc.*)  
**SOLD**

30. Summary of Porous Zones (Include Aquifers):  Show all important zones of porosity and contents thereof: Cored intervals and all drill-stem tests, including depth interval tested, cushion used, time tool open, flowing and shut-in pressures and recoveries.	31. Formation (Log) Markers
--	-----------------------------

Formation	Top	Bottom	Descriptions, Contents, etc.	Name	Top Meas. Depth
CHERRY CANYON	3721	4952	OIL, GAS, WATER	RUSTLER	211
BRUSHY CANYON	4953	6573	OIL, GAS, WATER	SALADO	609
BONE SPRING	6574	7513	OIL, GAS, WATER	CASTILE	1238
1ST BONE SPRING	7514	8318	OIL, GAS, WATER	DELAWARE	2803
2ND BONE SPRING	8319	9446	OIL, GAS, WATER	CHERRY CANYON	3721
3RD BONE SPRING	9447	9763	OIL, GAS, WATER	BRUSHY CANYON	4953
				BONE SPRING	6574
				1ST BONE SPRING	7514

32. Additional remarks (include plugging procedure):  
 52. FORMATION (LOG) MARKERS CONTD.

2ND BONE SPRING 8319'M  
 3RD BONE SPRING 9447'M

Gamma Ray Log, Directional Survey, As-Drilled Amended C-102 plat & WBD are attached.

33. Circle enclosed attachments:			
1. Electrical/Mechanical Logs (1 full set req'd.)	2. Geologic Report	3. DST Report	4. Directional Survey
5. Sundry Notice for plugging and cement verification	6. Core Analysis	7 Other:	

34. I hereby certify that the foregoing and attached information is complete and correct as determined from all available records (see attached instructions):  
**Electronic Submission #514076 Verified by the BLM Well Information System.**  
**For OXY USA INC., sent to the Carlsbad**

Name(*please print*) JANA MENDIOLA Title REGULATORY SPECIALIST

Signature \_\_\_\_\_ (Electronic Submission) Date 05/04/2020

Title 18 U.S.C. Section 1001 and Title 43 U.S.C. Section 1212, make it a crime for any person knowingly and willfully to make to any department or agency of the United States any false, fictitious or fraudulent statements or representations as to any matter within its jurisdiction.

**\*\* ORIGINAL \*\* ORIGINAL \*\* ORIGINAL \*\* ORIGINAL \*\* ORIGINAL \*\* ORIGINAL \*\* ORIGINAL \*\***