

Surface Use & Operating Plan

Dodd Federal Unit #540

- Surface Tenant: Bogle Farms, Lewis Derrick, P O Box 441, Artesia, NM 88211.
- New Road: approx. 233'
- Flow Line: approx. 0.2 miles
- Facilities: Dodd 11-A Federal Tank Battery

Well Site Information

V Door: East

Topsoil: West

Interim Reclamation: West/ North



Notes

-N/A

Onsite: 3/8/2011

John Fast (BLM), Chris Moon (COG), Caden Jameson (COG), Gary Box (J.W.S)

SURFACE USE AND OPERATING PLAN

1. Existing & Proposed Access Roads

- A. The well site survey and elevation plat for the proposed well is shown in Exhibit #1. It was staked by John West Engineering, Hobbs, NM.
- B. All roads to the location are shown in the topographic map Exhibit #2. The existing lease roads are illustrated and are adequate for travel during drilling and production operations. Upgrading existing roads prior to drilling the well will be done where necessary.
- C. Directions to location: From the intersection US Highway 82 and Co. Rd. 215 (Kewanee), go North on Co. Rd. #215 approx. 0.6 miles. Turn right and go north approx. 0.5 miles. Turn left and go west approx. 0.3 miles to a proposed road survey. Turn right and follow proposed road survey stakes north approx. 233 feet. This location stake is approx. 191 feet northwest. See Vicinity Map, Exhibit #3.
- D. Routine grading and maintenance of existing roads will be conducted as necessary to maintain their condition as long as any operations continue on this lease. Roads will be maintained according to specifications in section 2A of this Surface Use and Operating Plan.

2. Proposed Access Road:

Exhibit #4 shows that 233' of new access road will be required for this location. If any road is required it will be constructed as follows:

- A. The maximum width of the running surface will be 14'. The road will be crowned, ditched and constructed of 6" rolled and compacted caliche. Ditches will be at 3:1 slope and 4 feet wide. Water will be diverted where necessary to avoid ponding, prevent erosion, maintain good drainage, and to be consistent with local drainage patterns.
- B. The average grade will be less than 1%.
- C. No turnouts are planned.
- D. No culverts, cattleguard, gates, low water crossings or fence cuts are necessary.

- E. Surfacing material will consist of native caliche. Caliche will be obtained from the actual well site if available. If not available onsite, caliche will be hauled from the nearest BLM caliche pit.

3. Location of Existing Well:

Exhibit #5 shows all existing wells within a one-mile radius of this well.

As shown on this plat there are numerous wells producing from the San Andres and Yeso formations.

4. Location of Existing and/or Proposed Facilities:

- A. COG Operating LLC does operate a production facility on this lease.
- B. If the well is productive, contemplated facilities will be as follows:
 - 1) Production will be sent to the Dodd 11-A Federal Tank Battery to be located in Section 11 at the Dodd Federal Unit #541 well location. The facility location is shown in Exhibit #5.
 - 2) The tank battery and facilities including all flow lines and piping will be installed according to API specifications.
 - 3) Any additional caliche will be obtained from the actual well site. If caliche does not exist or is not plentiful from the well site, the caliche will be hauled from a BLM approved caliche pit. Any additional construction materials will be purchased from contractors.
 - 4) Proposed flow lines, will follow an archaeologically approved route to the Dodd 11-A Federal Tank Battery to be located in Section 11 at the Dodd Federal Unit #541 well location. The flowline will be SDR 7 3" poly line laid on the surface and will be approximately 0.2 miles in length.
 - 5) It will be necessary to run electric power if this well is productive. Power will be provided by CVE and they will submit a separate plan and ROW for service to the well location.
 - 6) If the well is productive, rehabilitation plans will include the following:
 - a) The original topsoil from the well site will be returned to the location, and the site will be re-contoured as close as possible to the original site.

5. Location and Type of Water Supply:

The well will be drilled with combination brine and fresh water mud system as outlined in the drilling program. The water will be obtained from commercial water stations in the area and hauled to location by transport truck over the existing and proposed access roads shown in Exhibit #2. If a commercial fresh water source is nearby, fast line may be laid along existing road ROW's and fresh water pumped to the well. No water well will be drilled on the location.

6. Source of Construction Materials and Location "Turn-Over" Procedure:

Obtaining caliche: The primary way of obtaining caliche to build locations and roads will be by "turning over" the location. This means, caliche will be obtained from the actual well sight. A caliche permit will be obtained from BLM prior to pushing up any caliche. 2400 cu. Yards is max amount of caliche needed for pad and roads. Amount will vary for each pad. The procedure below has been approved by BLM personnel:

- A. The top 6 inches of topsoil is pushed off and stockpiled along the side of the location.**
- B. An approximate 120' X 120' area is used within the proposed well site to remove caliche.**
- C. Subsoil is removed and piled alongside the 120' by 120' area within the pad site.**
- D. When caliche is found, material will be stock piled within the pad site to build the location and road.**
- E. Then subsoil is pushed back in the hole and caliche is spread accordingly across entire location and road.**
- F. Once well is drilled, the stock piled top soil will be used for interim reclamation and spread along areas where caliche is picked up and the location size is reduced. Neither caliche or subsoil will be stock piled outside of the well pad. Topsoil will be stockpiled along the edge of the pad as depicted in attached plat.**

In the event that no caliche is found onsite, caliche will be hauled in from a BLM approved caliche pit.

7. Methods of Handling Water Disposal:

- A. The well will be drilled utilizing a closed loop mud system. Drill cuttings will be held in roll-off style mud boxes and taken to an NMOCD approved disposal site.
- B. Drilling fluids will be contained in steel mud pits.
- C. Water produced from the well during completion will be held temporarily in steel tanks and then taken to an NMOCD approved commercial disposal facility.
- D. Garbage and trash produced during drilling or completion operations will be collected in a trash bin and hauled to an approved landfill. No toxic waste or hazardous chemicals will be produced by this operation.
- E. After the rig is moved out and the well is either completed or abandoned, all waste materials will be cleaned up within 30 days. In the event of a dry hole only a dry hole marker will remain.

8. Ancillary Facilities:

No airstrip, campsite or other facilities will be built as a result of the operation on this well.

9. Well Site Layout:

- A. The drill pad layout, with elevations staked by John West Engineering, is shown in Exhibit #4. Dimensions of the pad and pits are shown on Exhibit #6. V door direction is East. Topsoil, if available, will be stockpiled per BLM specifications. Because the pad is almost level no major cuts will be required.
- B. Exhibit #6 also shows the proposed orientation of closed loop system and access road. No permanent living facilities are planned, but a temporary foreman/toolpusher's trailer will be on location during the drilling operations.

10. Plans for Restoration of the Surface:

- A. Interim Reclamation will take place after the well has been completed. The pad will be downsized by reclaiming the areas not needed for production operations. The portions of the pad that are not needed for production operations will be re-contoured to its original state as much as possible. The caliche that is removed will be reused to either build another pad site or for road repairs within the lease. The stockpiled topsoil will then be spread out reclaimed area and reseeded with a BLM approved seed mixture. In the event

that the well must be worked over or maintained, it may be necessary to drive, park, and/or operate machinery on reclaimed land. This area will be repaired or reclaimed after work is complete.

- B. Final Reclamation: Upon plugging and abandoning the well, All caliche for well pad and lease road will be removed and surface will be recountoured to reflect its surroundings as much as possible. Caliche will be recycled for road repair or reused for another well pad within the lease. If any topsoil remains, it will be spread out and the area will be re-seeded with a BLM approved mixture and re-vegetated as per BLM orders.

11.Surface Ownership:

- A. The surface is owned by the U.S. Government and is administered by the Bureau of Land Management. The surface is multiple uses with the primary uses of the region for grazing of livestock and the production of oil and gas.
- B. The surface tenant for this site is Bogle Farms, Lewis Derrick, P.O. Box 441, Artesia, NM 88211.
- C. The proposed road routes and surface location will be restored as directed by the BLM

12.Other Information:

- A. The area around the well site is grassland and the topsoil is sandy. The vegetation is moderately sparse with native prairie grasses, some mesquite and shinnery oak. No wildlife was observed but it is likely that mule deer, rabbits, coyotes and rodents traverse the area.
- B. There is no permanent or live water in the immediate area.
- C. There are no dwellings within 2 miles of this location.
- D. If needed, a Cultural Resources Examination is being prepared by Southern New Mexico Archaeological Services, Inc. P.O. Box 1, Bent New Mexico, 88314, phone # 505-671-4797 and the results will be forwarded to your office in the near future. Otherwise, **COG will be participating in the Permian Basin MOA Program.**

13. Bond Coverage:

Bond Coverage is Nationwide Bond # 000215

14. Lessee's and Operator's Representative:

The COG Operating LLC representative responsible for assuring compliance with the surface use plan is as follows:

John Coffman,

Drilling Superintendent

COG Operating LLC

550 W. Texas, Suite 1300

Midland, TX 79701

Phone (432) 683-7443 (office)

(432) 631-9762 (cell)

Erick Nelson.

Division Operations Manager

COG Operating LLC

550 W. Texas, Suite 1300

Midland, TX 79701

Phone (505) 746-2210 (office)

(432) 238-7591 (cell)

*Surface Use Plan
COG Operating, LLC
Dodd Federal Unit #540
SL: 1720' FNL & 330' FWL UL E
Section 11, T-17-S, R-29-E
Eddy County, New Mexico*

I hereby certify that I, or persons under my direct supervision, have inspected the drill site and access road proposed herein; that I am familiar with the conditions that presently exist; that I have full knowledge of State and Federal laws applicable to this operation; that the statements made in this APD package are, to the best of my knowledge, true and correct; and that the work associated with the operations proposed herein will be performed in conformity with this APD package and the terms and conditions under which it is approved. I also certify that I, or COG Operating, LLC, am responsible for the operations conducted under this application. These statements are subject to the provisions of 18 U.S.C. 1001 for the filing of false statements. Executed this 4th day of April, 2011.

Signed: Carl Bird

Printed Name: Carl Bird

Position: Drilling Engineer

Address: 550 W. Texas, Suite 1300, Midland, Texas 79701

Telephone: (432) 683-7443

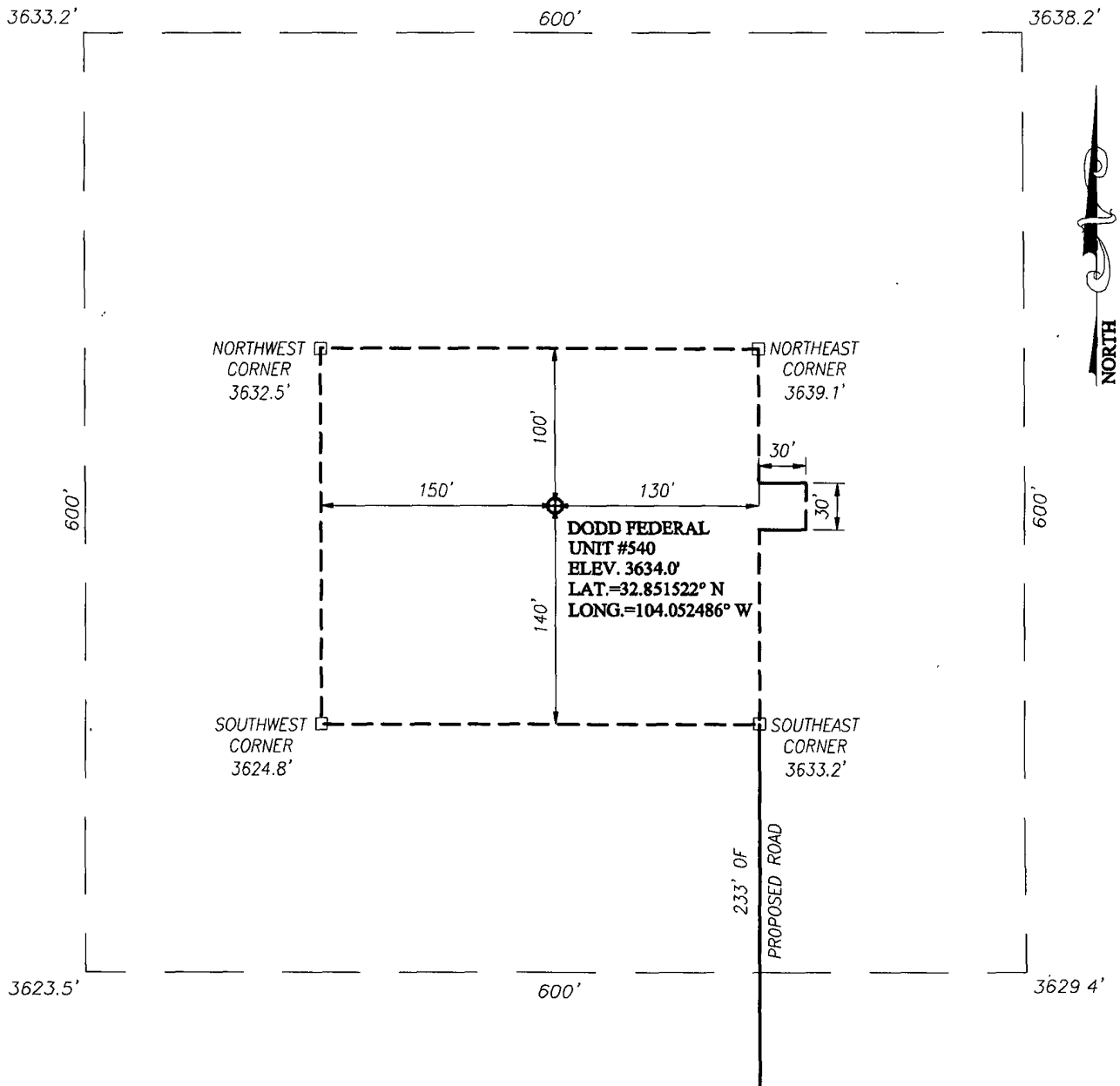
Field Representative (if not above signatory): Same

E-mail: cbird@conchoresources.com

Exhibits:

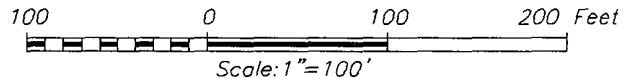
- Exhibit #1 Wellsite and Elevation Plat**
Form C-102 Well location and acreage dedication plat
- Exhibit #2 Topographic Map (West)**
- Exhibit #3 Vicinity Map and area roads**
- Exhibit #4 Elevation Plat (West)**
- Exhibit #5 Topographic extract showing wells, roads and flowlines**
- Exhibit #6 Pad Layout and orientation**
- Exhibit #7 H2S Signage**
- Exhibit #8 H2S Equipment location**
- Exhibit #9 BOP and Choke diagrams**
- Exhibit #10 Form C-144 NMOCD pit permit application**
- Exhibit #11 1 Mile Radius List and Map showing all wells permitted,
producing and plugged**

SECTION 11, TOWNSHIP 17 SOUTH, RANGE 29 EAST, N.M.P.M.
 EDDY COUNTY NEW MEXICO



DIRECTIONS TO LOCATION

FROM THE INTERSECTION OF U.S. HWY. #82 AND CO. RD. #215 (KEWANEE), GO NORTH ON CO. RD. #215 APPROX. 1.5 MILES TURN LEFT AND GO WEST APPROX. 0.6 MILES TURN RIGHT AND GO NORTH APPROX. 0.5 MILES TURN LEFT AND GO WEST APPROX. 0.3 MILES TO A PROPOSED ROAD SURVEY. TURN RIGHT AND FOLLOW PROPOSED ROAD SURVEY STAKES NORTH APPROX. 233 FEET. THIS LOCATION STAKE IS APPROX. 191 FEET NORTHWEST



PROVIDING SURVEYING SERVICES
SINCE 1946

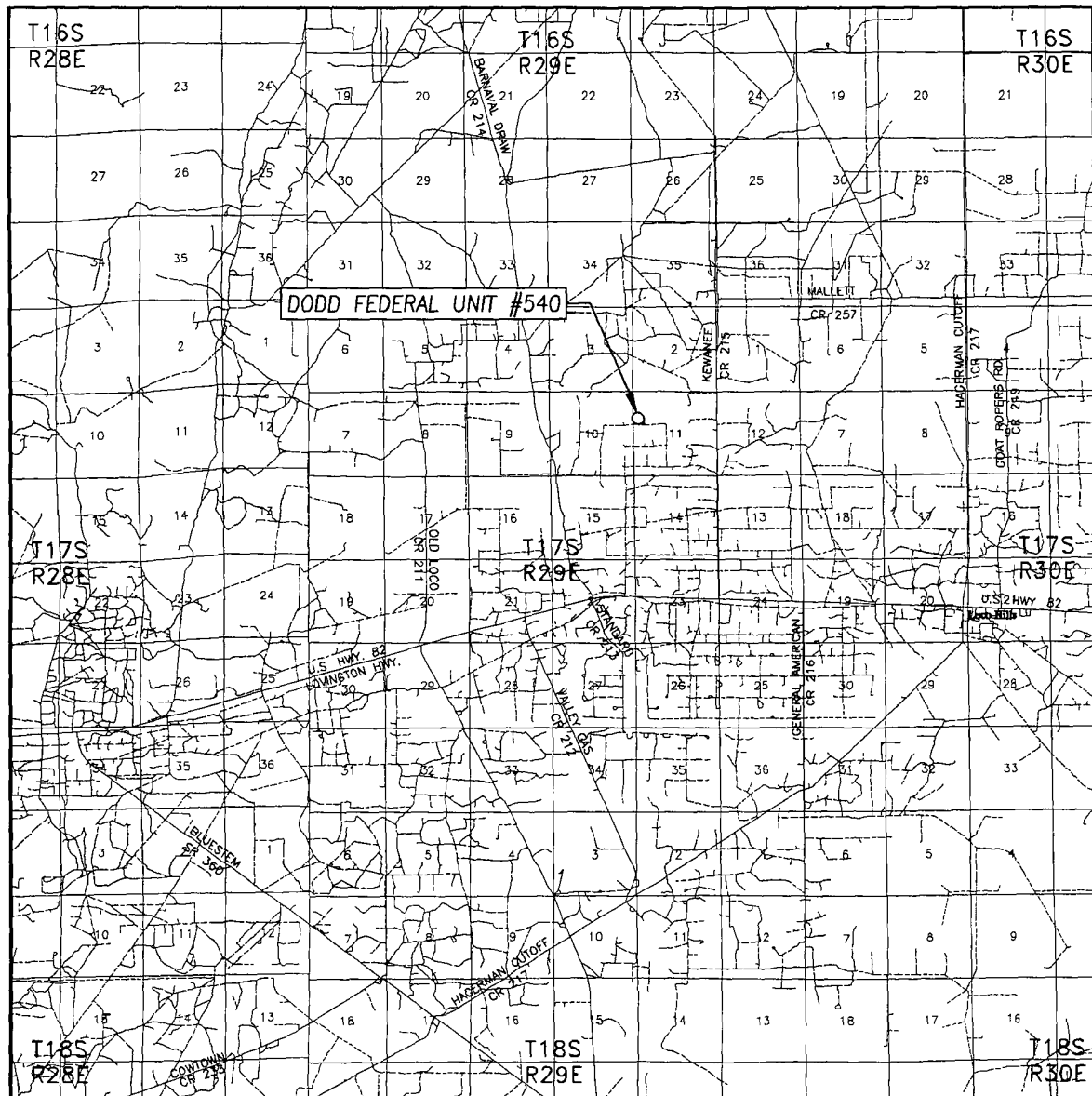
JOHN WEST SURVEYING COMPANY
 412 N. DAL PASO
 HOBBS, N.M. 88240
 (575) 393-3117

COG OPERATING, LLC

DODD FEDERAL UNIT #540 WELL
 LOCATED 1720 FEET FROM THE NORTH LINE
 AND 330 FEET FROM THE WEST LINE OF SECTION 11,
 TOWNSHIP 17 SOUTH, RANGE 29 EAST, N.M.P.M.,
 EDDY COUNTY, NEW MEXICO


Survey Date: 4/12/11	Sheet 1 of 1 Sheets
W.O. Number: 11.11.0116	Dr By: DSS
Date: 4/16/11	Rev 1: N/A
Rel. W.O.:	11110116 Scale: 1"=100'

VICINITY MAP



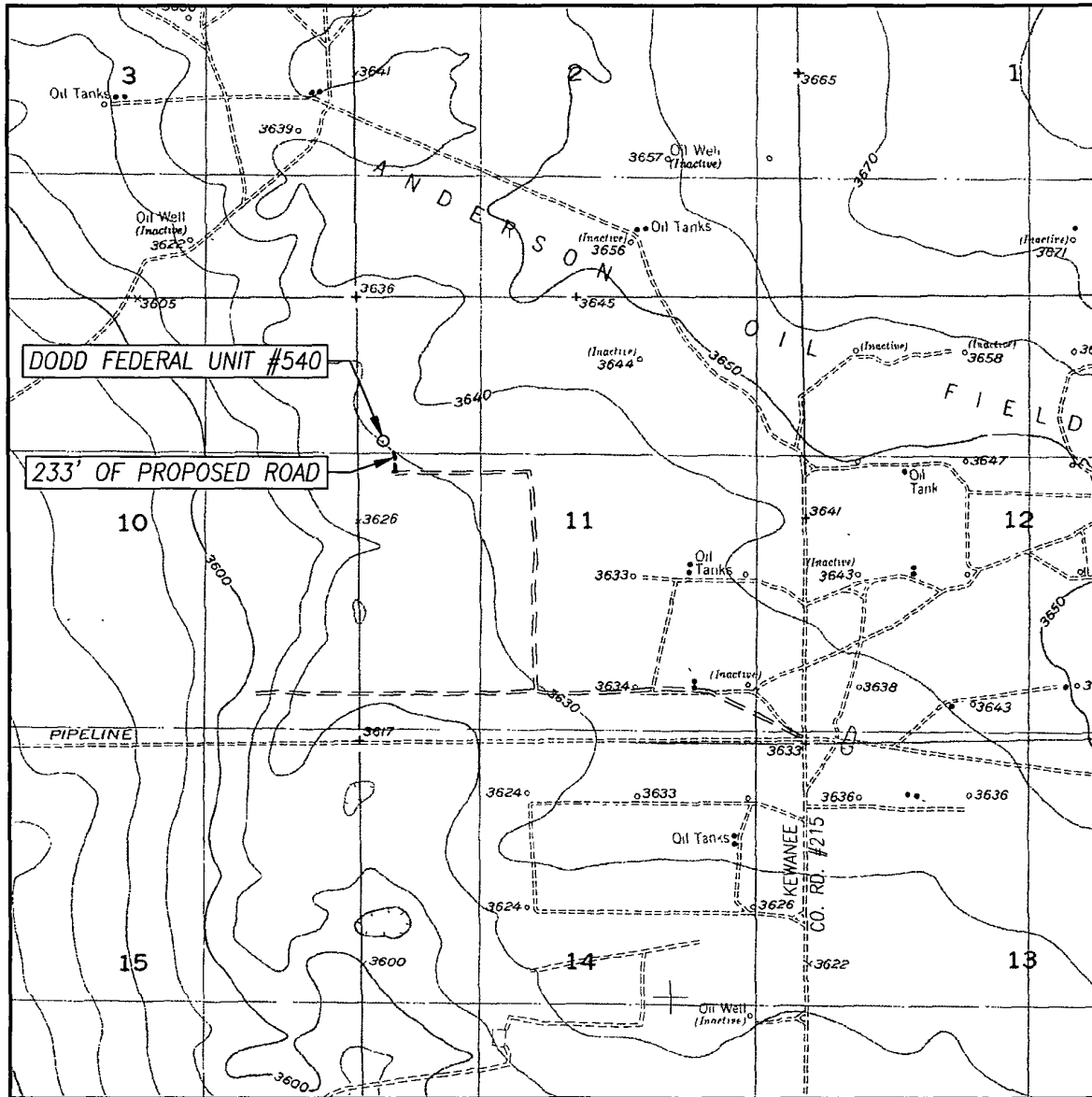
SCALE: 1" = 2 MILES

SEC. 11 TWP. 17-S RGE. 29-E
 SURVEY N.M.P.M.
 COUNTY EDDY STATE NEW MEXICO
 DESCRIPTION 1720' FNL & 330' FWL
 ELEVATION 3634'
 OPERATOR COG OPERATING, LLC
 LEASE DODD FEDERAL UNIT



PROVIDING SURVEYING SERVICES
 SINCE 1946
JOHN WEST SURVEYING COMPANY
 412 N. DAL PASO
 HOBBS, N.M. 88240
 (575) 393-3117

LOCATION VERIFICATION MAP



SCALE: 1" = 2000'

CONTOUR INTERVAL:
RED LAKE SE, N.M. - 10'

SEC. 11 TWP. 17-S RGE. 29-E

SURVEY N.M.P.M.

COUNTY EDDY STATE NEW MEXICO


DESCRIPTION 1720' FNL & 330' FWL

ELEVATION 3634'

OPERATOR COG OPERATING, INC.

LEASE DODD FEDERAL UNIT

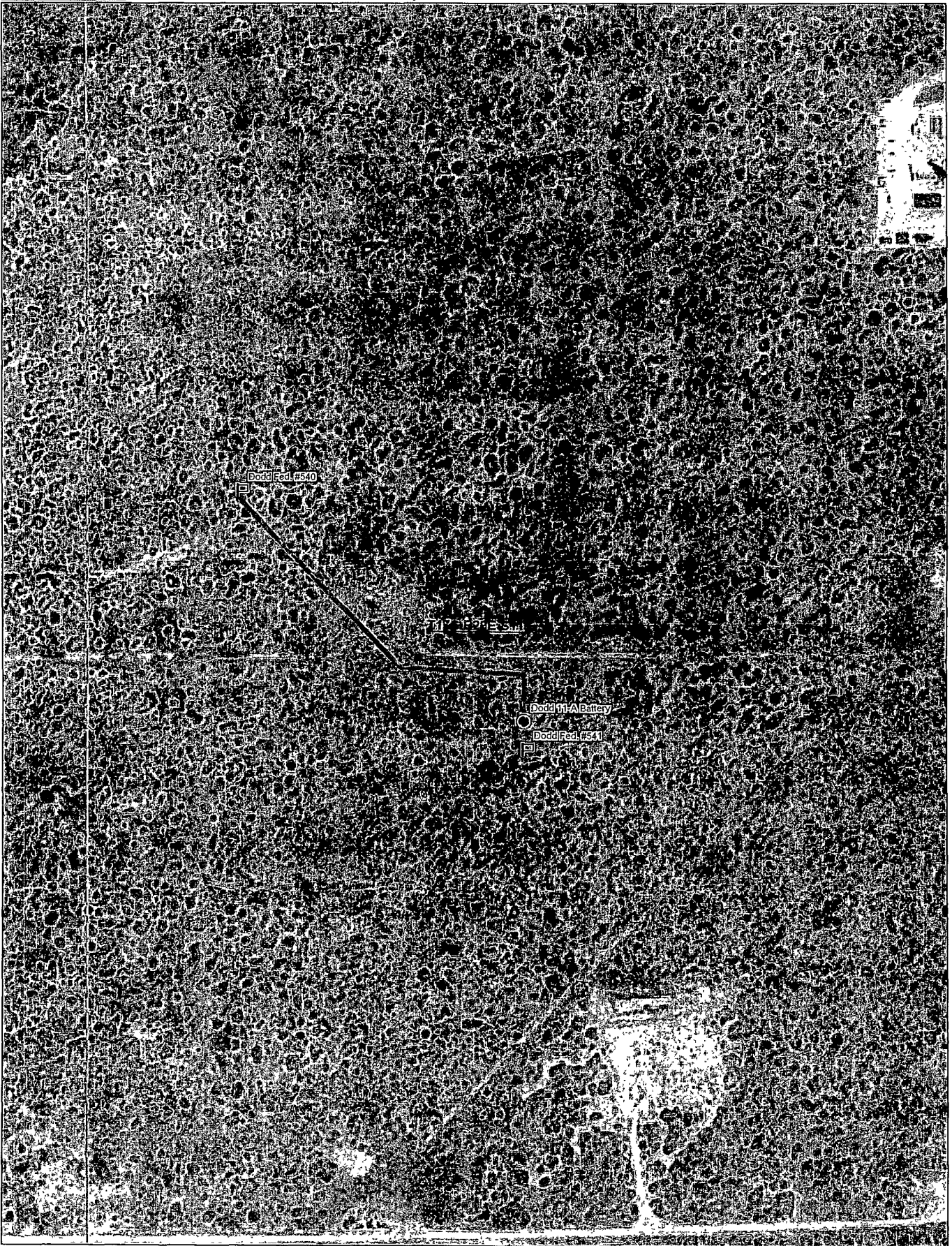
U.S.G.S. TOPOGRAPHIC MAP
RED LAKE SE, N.M.



PROVIDING SURVEYING SERVICES
SINCE 1946

JOHN WEST SURVEYING COMPANY

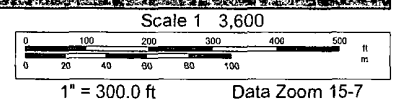
412 N. DAL PASO
HOBBS, N.M. 88240
(575) 393-3117

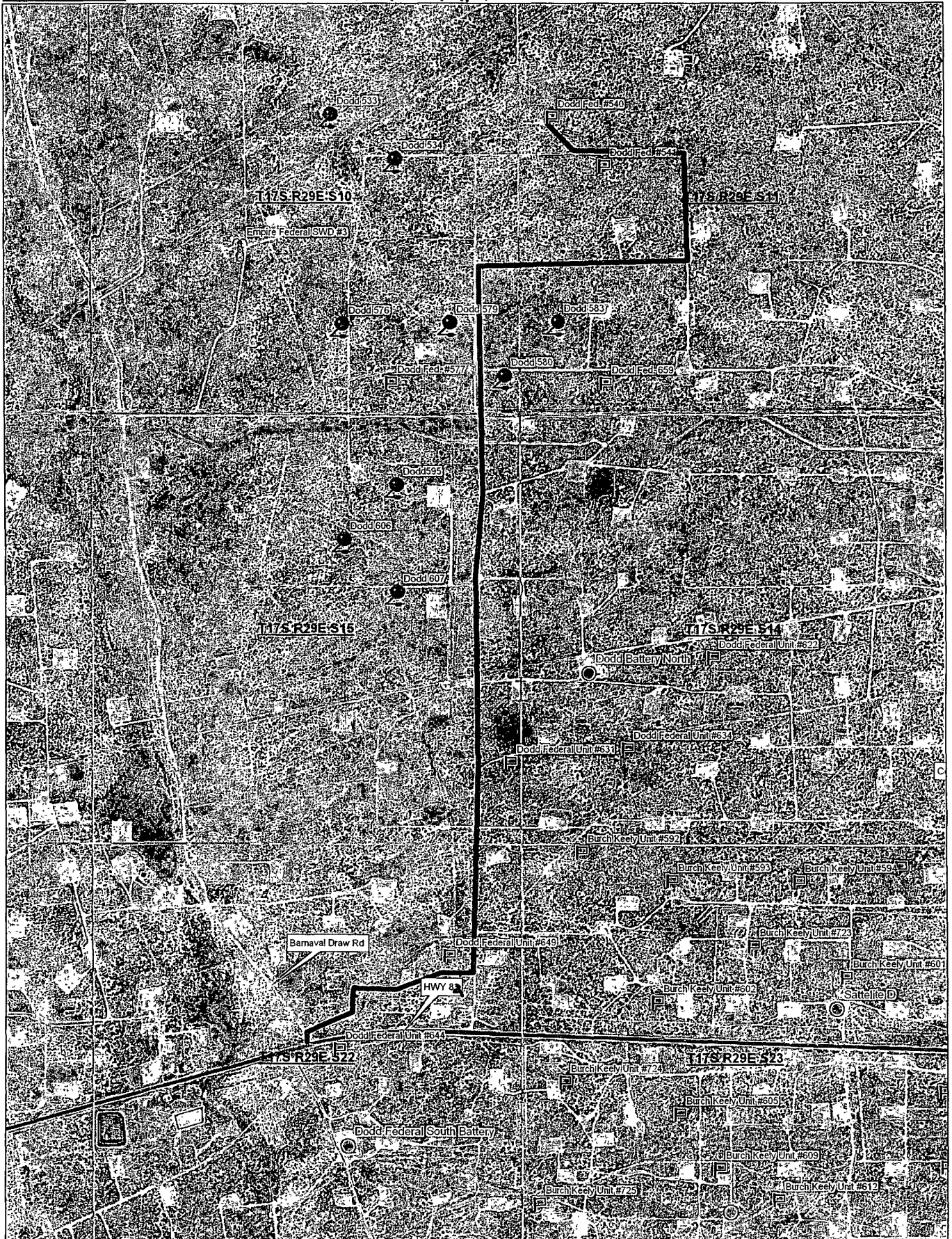


Data use subject to license

© DeLorme XMap® 7.

www.delorme.com





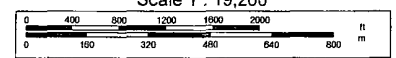
Data use subject to license.

© DeLorme. XMap® 7.

www.delorme.com



Scale 1 : 19,200



1" = 1,600.0 ft

Data Zoom 13-4

Offset wells to Dodd Federal Unit #540

API#	Operator	Lease	Well#	County	Legal	Field Name	Reservoir Name	Total Depth	Well Type	Well Status	First Prod.	Last Prod.	Avg. (BO/D)
30-015-02975	MARBOB ENERGY CORP	M DODD B	001	EDDY	S 14, T 17S, R 29E	GRAYBURG JKSN SR-Q-G-SA(DO NOT USE)		3,765	O	Pumping	Jan 1967	Sep 1975	0 00
30-015-02980	MARBOB ENERGY CORP	M DODD B	024	EDDY	S 14, T 17S, R 29E	GRAYBURG JKSN SR-Q-G-SA(DO NOT USE)		3,580	PI	Injection Well	Jan 1967	Jun 1967	0 00
30-015-02862		STATE C	001	EDDY	S 2, T 17S, R 29E	SQUARE LAKE	GRAYBURG-SAN ANDRES		O	Active	Feb 1958	Oct 1968	0 00
30-015-02858	C F M OIL CO DBA LOUIS AND JUDY FULTON	ATLANTIC STATE	001	EDDY	S 2, T 17S, R 29E	SQUARE LAKE	GRAYBURG-SAN ANDRES	0	O	Pumping	Sep 1959	Dec 2010	0 03
30-015-02865	C F M OIL CO DBA LOUIS AND JUDY FULTON	STATE B	001	EDDY	S 2, T 17S, R 29E	SQUARE LAKE	GRAYBURG-SAN ANDRES	2,586	O	Active	Jan 1958	Jun 2010	0 03
30-015-20166	MARBOB ENERGY CORP	M DODD B	031	EDDY	S 11, T 17S, R 29E	GRAYBURG JKSN SR-Q-G-SA(DO NOT USE)		0	O	Pumping	Jan 1972	Jul 1976	0 03
30-015-02982		CONTINENTAL U STATE	001	EDDY	S 15, T 17S, R 29E	GRAYBURG JACKSON	SR-Q-G-SA	2,690	O	Active	Jul 1958	Sep 1973	0 03
30-015-02982		CONTINENTAL U STATE	001	EDDY	S 15, T 17S, R 29E	GRAYBURG JKSN SR-Q-G-SA(DO NOT USE)	SR-Q-G-SA	2,690	O	Active	Jan 1969	Sep 1973	0 03
30-015-31974	RKI EXPLORATION & PRODUCTION, LLC	DURANGO 10 FEDERAL	1	EDDY	S 10, T 17N, R 29E	GRAYBURG	ATOKA, NORTH (GAS)	10,925	G	Flowing	Jan 2005	Nov 2010	0 03
30-015-02866	HERMAN J LEDBETTER	ANDERSON STATE	001	EDDY	S 2, T 17S, R 29E	SQUARE LAKE	GRAYBURG-SAN ANDRES	0	O	Pumping	Jan 1958	Dec 1992	0 06
30-015-02944	MARBOB ENERGY CORP	M DODD B	013	EDDY	S 10, T 17S, R 29E	GRAYBURG JKSN SR-Q-G-SA(DO NOT USE)		2,478	O	Active	Jan 1967	Dec 1976	0 06
30-015-02945	MARBOB ENERGY CORP	M DODD B	014	EDDY	S 10, T 17S, R 29E	GRAYBURG JKSN SR-Q-G-SA(DO NOT USE)		2,475	O	Active	Jan 1967	Dec 1977	0 06
30-015-02864	SALSICH NEIL E	STATE AA	001	EDDY	S 2, T 17S, R 29E	SQUARE LAKE GRAYBURG		0	O	Pumping	Jan 1958	Jul 1964	0 06
30-015-02943	MARBOB ENERGY CORP	M DODD B	012	EDDY	S 10, T 17S, R 29E	GRAYBURG JKSN SR-Q-G-SA(DO NOT USE)		2,482	O	Pumping	Jan 1967	Dec 1977	0 13
30-015-02978	MARBOB ENERGY CORP	M DODD B	27	EDDY	S 14, T 17S, R 29E	GRAYBURG JKSN SR-Q-G-SA(DO NOT USE)		4,441	O	Pumping	Jan 1967	Dec 1977	0 13
30-015-20027	MARBOB ENERGY CORP	M DODD B	019	EDDY	S 11, T 17S, R 29E	GRAYBURG JKSN SR-Q-G-SA(DO NOT USE)		2,700	O	Pumping	May 1967	Dec 1977	0 13
30-015-00000		GULF B STATE	002	EDDY	S 2, T 17S, R 29E	SQUARE LAKE	GRAYBURG-SAN ANDRES		O	Active	Jan 1960	Apr 1960	0 13
30-015-02866	SPURCK WILLIAM	STATE	001	EDDY	S 2, T 17S, R 29E	SQUARE LAKE GRAYBURG		0	O	Pumping	Jan 1958	Mar 1965	0 26
30-015-02865	SALSICH NEIL E	STATE AB	001	EDDY	S 2, T 17S, R 29E	SQUARE LAKE GRAYBURG		2,586	O	Active	Jan 1960	Dec 1965	0 26
	C F M OIL CO												

30-015-02855	DBA LOUIS AND JUDY FULTON	MORGAN STATE	002	EDDY	S 2, T 17S, R 29E	SQUARE LAKE	GRAYBURG-SAN ANDRES	0	O	Active	Apr 1959	Nov 2010	0 27
30-015-02994	MARBOB ENERGY CORP	M DODD B	016	EDDY	S 15, T 17S, R 29E	GRAYBURG JKSN SR-Q-G-SA(DO NOT USE)		0	I	Plugged and Abandoned	Jan 1967	Jun 1967	0.27
30-015-31974	DOMINION OKLAHOMA TEXAS EXPL & PROD INC	DURANGO "10" FEDERAL	1	EDDY	S 10, T 17N, R 29E	GRAYBURG, ATOKA, NORTH		10,925	G	Flowing	Jan 2002	Dec 2007	0 29
30-015-02869	C O FULTON	DUBLIN	002	EDDY	S 3, T 17S, R 29E	SQUARE LAKE	GRAYBURG-SAN ANDRES	0	O	Active	Jan 1950	Aug 2010	0 32
30-015-02953	MARBOB ENERGY CORP	BOYD DODD B	003	EDDY	S 11, T 17S, R 29E	GRAYBURG JACKSON	SR-Q-G-SA	0	O	Pumping	Jan 1956	Jan 2011	0 42
30-015-25461	MARBOB ENERGY CORP	BOYD DODD B	13	EDDY	S 11, T 17S, R 29E	GRAYBURG JACKSON	SR-Q-G-SA	4,529	O	Pumping	Jan 1993	Jan 2011	0 42
30-015-24488	MARBOB ENERGY CORP	BOYD DODD B	006	EDDY	S 11, T 17S, R 29E	GRAYBURG JACKSON	SR-Q-G-SA	3,491	PO	Pumping	Jan 1993	Jan 2011	0 45
30-015-34564	MARBOB ENERGY CORP	DODD FEDERAL UNIT	107	EDDY	S 11, T 17S, R 29E	GRAYBURG JACKSON	SR-Q-G-SA	4,550	O	Active Permit	Jan 2007	Jan 2011	0 45
30-015-34568	MARBOB ENERGY CORP	DODD FEDERAL UNIT	109	EDDY	S 11, T 17S, R 29E	GRAYBURG JACKSON	SR-Q-G-SA	4,550	O	Active Permit	Jan 2007	Jan 2011	0 45
30-015-34566	MARBOB ENERGY CORP	DODD FEDERAL UNIT	101	EDDY	S 11, T 17S, R 29E	GRAYBURG JACKSON	SR-Q-G-SA	4,550	O	Active Permit	Jun 2006	Jan 2011	0 45
30-015-20027	MARBOB ENERGY CORP	M DODD B	019	EDDY	S 11, T 17S, R 29E	GRAYBURG JACKSON	SR-Q-G-SA	2,700	O	Pumping	Jan 1969	Aug 2004	0 48
30-015-21976	C O FULTON	DUBLIN STATE	004	EDDY	S 3, T 17S, R 29E	SQUARE LAKE	GRAYBURG-SAN ANDRES	2,989	O	Pumping	Apr 1981	Aug 2010	0 58
30-015-02946	MARBOB ENERGY CORP	M DODD B	015	EDDY	S 10, T 17S, R 29E	GRAYBURG JACKSON	SR-Q-G-SA	2,456	O	Pumping	May 1958	Jan 2011	0 61
30-015-02974	MARBOB ENERGY CORP	M DODD B	28	EDDY	S 14, T 17S, R 29E	GRAYBURG JACKSON	SR-Q-G-SA	4,506	O	Pumping	Jan 1956	Jan 2011	0 61
30-015-02975	MARBOB ENERGY CORP	M DODD B	001	EDDY	S 14, T 17S, R 29E	GRAYBURG JACKSON	SR-Q-G-SA	3,765	O	Pumping	Jan 1956	Jan 2011	0 61
30-015-20077	MARBOB ENERGY CORP	M DODD B	023	EDDY	S 11, T 17S, R 29E	GRAYBURG JACKSON	SR-Q-G-SA	0	O	Pumping	Jan 1971	Jan 2011	0 61
30-015-25231	MARBOB ENERGY CORP	M DODD B	048	EDDY	S 14, T 17S, R 29E	GRAYBURG JACKSON	SR-Q-G-SA	4,462	PO	Pumping	Jan 1993	Jan 2011	0 61
30-015-25340	MARBOB ENERGY CORP	M DODD B	26	EDDY	S 14, T 17S, R 29E	GRAYBURG JACKSON	SR-Q-G-SA	5,813	O	Pumping	Jan 1993	Jan 2011	0 61
30-015-25438	MARBOB ENERGY CORP	M DODD B	16	EDDY	S 11, T 17S, R 29E	GRAYBURG JACKSON	SR-Q-G-SA	4,525	O	Pumping	Jan 1993	Jan 2011	0 61
30-015-25463	MARBOB ENERGY CORP	M DODD B	18	EDDY	S 11, T 17S, R 29E	GRAYBURG JACKSON	SR-Q-G-SA	4,512	O	Pumping	Jan 1993	Jan 2011	0 61
30-015-25464	MARBOB ENERGY CORP	M DODD B	9	EDDY	S 11, T 17S, R 29E	GRAYBURG JACKSON	SR-Q-G-SA	4,517	O	Pumping	Jan 1993	Jan 2011	0 61
30-015-25705	MARBOB ENERGY CORP	M DODD B	060	EDDY	S 10, T 17S, R 29E	GRAYBURG JACKSON	SR-Q-G-SA	4,675	PO	Pumping	Jan 1993	Jan 2011	0 61

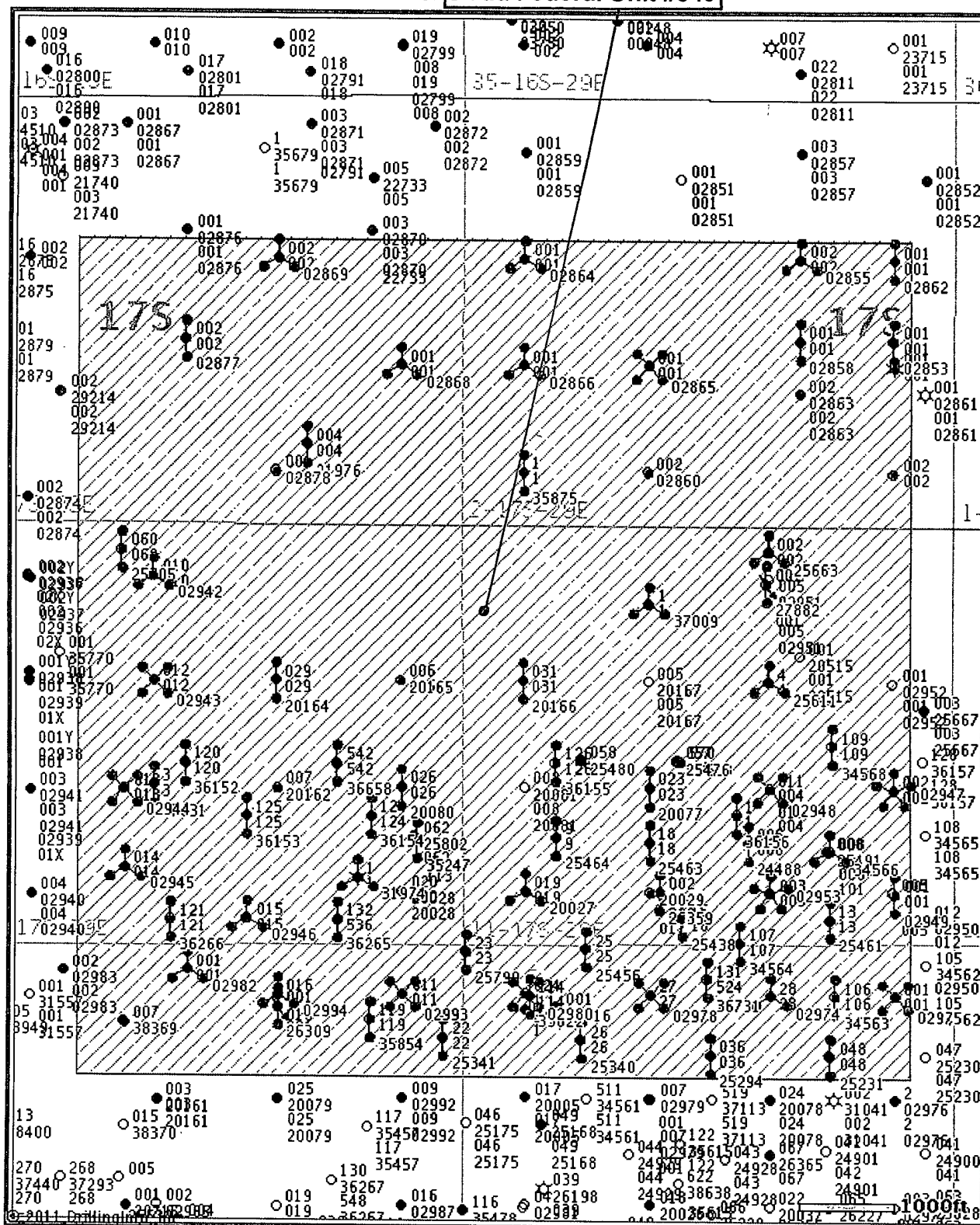
30-015-34563	MARBOB ENERGY CORP	DODD FEDERAL UNIT	106	EDDY	S 14, T 17S, R 29E	GRAYBURG JACKSON	SR-Q-G-SA	4,562	O	Active Permit	Dec 2006	Jan 2011	0.61
30-015-35247	MARBOB ENERGY CORP	DODD FEDERAL UNIT	113	EDDY	S 10, T 17S, R 29E	GRAYBURG JACKSON	SR-Q-G-SA	5,000	O	Active	Dec 2007	Jan 2011	0.61
30-015-35622	MARBOB ENERGY CORP	DODD FEDERAL UNIT	114	EDDY	S 14, T 17S, R 29E	GRAYBURG JACKSON	SR-Q-G-SA	5,000	O	Active Permit	Jan 2008	Jan 2011	0.61
30-015-36156	MARBOB ENERGY CORP	DODD FEDERAL UNIT	1	EDDY	S 11, T 17S, R 29E	GRAYBURG JACKSON	SR-Q-G-SA	5,700	O	Active Permit	Jun 2009	Jan 2011	0.61
30-015-36152	MARBOB ENERGY CORP	DODD FEDERAL UNIT	120	EDDY	S 10, T 17S, R 29E	GRAYBURG JACKSON	SR-Q-G-SA	4,480	O	Active Permit	Jul 2008	Jan 2011	0.61
30-015-36266	COG OPERATING LLC	DODD FEDERAL UNIT	121	EDDY	S 10, T 17S, R 29E	GRAYBURG JACKSON	SR-Q-G-SA	5,000	O	Active Permit	Mar 2010	Jan 2011	0.61
30-015-20080	MARBOB ENERGY CORP	M DODD B	026	EDDY	S 10, T 17S, R 29E	GRAYBURG JACKSON	SR-Q-G-SA	2,700	O	Active	Jan 1969	Apr 2002	0.63
30-015-20166	MARBOB ENERGY CORP	M DODD B	031	EDDY	S 11, T 17S, R 29E	GRAYBURG JACKSON	SR-Q-G-SA	0	O	Pumping	Jan 1969	Apr 2001	0.67
30-015-02944	MARBOB ENERGY CORP	M DODD B	013	EDDY	S 10, T 17S, R 29E	GRAYBURG JACKSON	SR-Q-G-SA	2,478	O	Active	Jan 1958	Dec 2002	0.71
30-015-02945	MARBOB ENERGY CORP	M DODD B	014	EDDY	S 10, T 17S, R 29E	GRAYBURG JACKSON	SR-Q-G-SA	2,475	O	Active	Feb 1958	Dec 2002	0.71
30-015-02993	MARBOB ENERGY CORP	M DODD B	011	EDDY	S 15, T 17S, R 29E	GRAYBURG JACKSON	SR-Q-G-SA	0	O	Active	Jan 1958	Dec 2001	0.74
30-015-25611	MARBOB ENERGY CORP	DODD FEDERAL UNIT	4	EDDY	S 11, T 17S, R 29E	GRAYBURG JACKSON	SR-Q-G-SA	4,560	O	Pumping	Jan 2005	Jan 2011	0.74
30-015-25663	MARBOB ENERGY CORP	DODD FEDERAL UNIT	002	EDDY	S 11, T 17S, R 29E	GRAYBURG JACKSON	SR-Q-G-SA	4,510	O	Pumping	Jan 2005	Jan 2011	0.74
30-015-02943	MARBOB ENERGY CORP	M DODD B	012	EDDY	S 10, T 17S, R 29E	GRAYBURG JACKSON	SR-Q-G-SA	2,482	O	Pumping	Jan 1958	Apr 2000	0.83
30-015-02942		M DODD B	010	EDDY	S 10, T 17S, R 29E	GRAYBURG JACKSON	SR-Q-G-SA		O	Active	Jan 1958	Sep 1983	0.83
30-015-02975	SUNRAY MID CONTINENT OIL CO	M DODD B FED	001	EDDY	S 14, T 17S, R 29E	SQUARE LAKE GRAYBURG		3,765	O	Pumping	Jan 1958	Dec 1966	0.87
30-015-02974	SUNRAY MID CONTINENT OIL CO	M DODD B FED	28	EDDY	S 14, T 17S, R 29E	SQUARE LAKE GRAYBURG		4,506	O	Pumping	Jan 1958	Dec 1966	0.87
30-015-02978	SUNRAY MID CONTINENT OIL CO	M DODD B FED	27	EDDY	S 14, T 17S, R 29E	SQUARE LAKE GRAYBURG		4,441	O	Pumping	Jan 1958	Dec 1966	0.87
30-015-02980	SUNRAY MID CONTINENT OIL CO	M DODD B FED	024	EDDY	S 14, T 17S, R 29E	SQUARE LAKE	CANYON	3,580	PI	Injection Well	Jan 1958	Dec 1966	0.87
30-015-02942	SUNRAY MID CONTINENT OIL CO	M DODD B FED	010	EDDY	S 10, T 17S, R 29E	SQUARE LAKE	CANYON		O	Active	Jan 1958	Dec 1966	0.87
30-015-02994	SUNRAY MID CONTINENT OIL CO.	M DODD B FED	016	EDDY	S 15, T 17S, R 29E	SQUARE LAKE	CANYON	0	I	Plugged and Abandoned	Jun 1958	Dec 1966	0.87
30-015-02864	C O FULTON	STATE A	001	EDDY	S 2, T 17S, R 29E	SQUARE LAKE	GRAYBURG-SAN ANDRES	0	O	Pumping	Jan 1958	Aug 2010	0.90
	SUNRAY MID				S 15,								

30-015-02993	CONTINENT OIL CO	M DODD B FED	011	EDDY	T 17S, R 29E	SQUARE LAKE	CANYON	0	O	Active	Jan 1958	Dec 1966	0 90
30-015-02943	SUNRAY MID CONTINENT OIL CO	M DODD B FED	012	EDDY	S 10, T 17S, R 29E	SQUARE LAKE	CANYON	2,482	O	Pumping	Jan 1958	Dec 1966	0 90
30-015-02944	SUNRAY MID CONTINENT OIL CO	M DODD B FED	013	EDDY	S 10, T 17S, R 29E	SQUARE LAKE	CANYON	2,478	O	Active	Jan 1958	Dec 1966	0 90
30-015-02945	SUNRAY MID CONTINENT OIL CO	M DODD B FED	014	EDDY	S 10, T 17S, R 29E	SQUARE LAKE	CANYON	2,475	O	Active	Feb 1958	Dec 1966	0 90
30-015-02946	SUNRAY MID CONTINENT OIL CO	M DODD B FED	015	EDDY	S 10, T 17S, R 29E	SQUARE LAKE	CANYON	2,456	O	Pumping	May 1958	Dec 1966	0 90
30-015-02868	DUBLIN JOHN R	STATE A	001	EDDY	S 3, T 17S, R 29E	SQUARE LAKE GRAYBURG		0	O	Shut-in	Jan 1960	Dec 1964	0 97
30-015-20080	MARBOB ENERGY CORP	M DODD B	026	EDDY	S 10, T 17S, R 29E	GRAYBURG JKSN SR-Q-G-SA(DO NOT USE)		2,700	O	Active	Sep 1967	Dec 1977	1 06
30-015-20164	MARBOB ENERGY CORP	M DODD B	029	EDDY	S 10, T 17S, R 29E	GRAYBURG JKSN SR-Q-G-SA(DO NOT USE)		2,760	O	Pumping	Jan 1972	Dec 1977	1 10
30-015-02982	CONTINENTAL OIL CO	STATE U 15	001	EDDY	S 15, T 17S, R 29E	SQUARE LAKE GRAYBURG		2,690	O	Active	Jan 1960	Mar 1966	1 10
30-015-20164	MARBOB ENERGY CORP	M DODD B	029	EDDY	S 10, T 17S, R 29E	GRAYBURG JACKSON	SR-Q-G-SA	2,760	O	Pumping	Jan 1971	Mar 1995	1 16
30-015-02877	BILL L MILLER	SHIPLEY FEDERAL	002	EDDY	S 3, T 17S, R 29E	SQUARE LAKE	GRAYBURG-SAN ANDRES	0	O	Pumping	Jan 1956	Jan 2011	1 29
30-015-02869	KERSEY & COMPANY	STATE B	002	EDDY	S 3, T 17S, R 29E	ANDERSON POOL		0	O	Active	Mar 1947	Dec 1957	1 35
30-015-02953	BOYD TOM	DODD B FED	003	EDDY	S 11, T 17S, R 29E	SQUARE LAKE GRAYBURG SA		0	O	Pumping	Jan 1958	Dec 1965	1 52
30-015-02855	BRISCOE ORLANDO	GULF STATE	002	EDDY	S 2, T 17S, R 29E	SQUARE LAKE GRAYBURG SA		0	O	Active	Jan 1960	Dec 1971	1 52
30-015-02860	MACY-TALMADGE, COWELL	STATE	002	EDDY	S 2, T 17S, R 29E	ANDERSON POOL			O	Active	Feb 1947	Jun 1950	1 57
30-015-35875	MEWBOURNE OIL CO	TETRA 2 STATE COM	1	EDDY	S 2, T 17S, R 29E	GRAYBURG	MORROW (GAS)	10,970	G	Active Permit	Apr 2008	Jan 2011	1 68
30-015-02866	SPURCK, WILLIAM	ANDERSON ST	001	EDDY	S 2, T 17S, R 29E	ANDERSON POOL		0	O	Pumping	Feb 1957	Dec 1957	1 74
30-015-00000	TOM BOYD	DODD B	005	EDDY	S 11, T 17S, R 29E	SQUARE LAKE GRAYBURG S A FACTO O TO 5M			AP	Unknown	Jan 1965	Dec 1965	1 97
30-015-02853	C F M OIL CO DBA LOUIS AND JUDY FULTON	KK STATE	001	EDDY	S 2, T 17S, R 29E	SQUARE LAKE	GRAYBURG-SAN ANDRES	0	O	Pumping	Jan 1967	Dec 2010	2 06
30-015-02877	SHIPLEY, JOHN M ET AL	SHIPLEY	002	EDDY	S 3, T 17S, R 29E	ANDERSON POOL		0	O	Pumping	Aug 1948	Dec 1957	2 10
30-015-02993	MARBOB ENERGY CORP	M DODD B	011	EDDY	S 15, T 17S, R 29E	GRAYBURG JKSN SR-Q-G-SA(DO NOT USE)		0	O	Active	Jan 1967	Nov 1976	2 17
30-015-02949		DODD B FEDERAL	001	EDDY	S 11, T 17S, R 29E	SQUARE LAKE	GRAYBURG-SAN ANDRES		O	Active	Jan 1963	Dec 1963	2 19
					S 11,								

30-015-02947	TOM BOYD	DODD B	002	EDDY	T 17S, R 29E	SQUARE LAKE GRAYBURG		0	O	Pumping	Jan 1965	Dec 1967	2 39
30-015-02953	TOM BOYD	DODD B	003	EDDY	S 11, T 17S, R 29E	SQUARE LAKE GRAYBURG		0	O	Pumping	Jan 1966	Dec 1967	2 39
30-015-02948	TOM BOYD	DODD B	011	EDDY	S 11, T 17S, R 29E	SQUARE LAKE GRAYBURG		2,521	PI	Injection Well	Jan 1966	Dec 1967	2 39
30-015-02949	BOYD, TOM	DODD B	001	EDDY	S 11, T 17S, R 29E	ANDERSON POOL			O	Active	Mar 1947	Feb 1951	2 43
30-015-02947	BOYD TOM	DODD B FED	002	EDDY	S 11, T 17S, R 29E	SQUARE LAKE GRAYBURG SA		0	O	Pumping	Jan 1958	Dec 1964	2 52
30-015-02862	SALSICH NEIL E	STATE AC	001	EDDY	S 2, T 17S, R 29E	SQUARE LAKE GRAYBURG			O	Active	Jan 1960	Dec 1965	2 77
30-015-25611	MARBOB ENERGY CORP	RAPER FEDERAL	4	EDDY	S 11, T 17S, R 29E	SQUARE LAKE	GRAYBURG-SAN ANDRES	4,560	O	Pumping	Jan 1987	Jan 2005	2 97
30-015-25663	MARBOB ENERGY CORP	RAPER FEDERAL	002	EDDY	S 11, T 17S, R 29E	SQUARE LAKE	GRAYBURG-SAN ANDRES	4,510	O	Pumping	Jan 1987	Jan 2005	2 97
30-015-02868	DUBLIN, JOHN & SON	STATE A	001	EDDY	S 3, T 17S, R 29E	ANDERSON POOL		0	O	Shut-in	Mar 1947	Dec 1957	2 97
30-015-02948	BOYD, TOM	DODD B	011	EDDY	S 11, T 17S, R 29E	ANDERSON POOL		2,521	PI	Injection Well	May 1952	Dec 1957	3 48
30-015-00000		STATE	001	EDDY	S 2, T 17S, R 29E	SQUARE LAKE	GRAYBURG-SAN ANDRES		G	Active	Mar 1959	Dec 1969	3 61
30-015-02953	MARBOB ENERGY CORP	BOYD DODD B	003	EDDY	S 11, T 17S, R 29E	GRAYBURG JKSN SR-Q-G-SA(DO NOT USE)		0	O	Pumping	Jan 1969	Dec 1977	3 71
30-015-02974	SUNRAY MID- CONTINENT OIL COMPANY	DODD B	28	EDDY	S 14, T 17S, R 29E	ANDERSON POOL		4,506	O	Pumping	Jan 1947	Dec 1957	3 90
30-015-02978	SUNRAY MID- CONTINENT OIL COMPANY	DODD B	27	EDDY	S 14, T 17S, R 29E	ANDERSON POOL		4,441	O	Pumping	Jan 1947	Dec 1957	3 90
30-015-02975	SUNRAY MID- CONTINENT OIL COMPANY	DODD B	001	EDDY	S 14, T 17S, R 29E	ANDERSON POOL		3,765	O	Pumping	Jan 1947	Dec 1957	4 00
30-015-02947	MARBOB ENERGY CORP	BOYD DODD B	002	EDDY	S 11, T 17S, R 29E	GRAYBURG JACKSON	SR-Q-G-SA	0	O	Pumping	Jan 1956	May 1994	4 26
30-015-02947	MARBOB ENERGY CORP	BOYD DODD B	002	EDDY	S 11, T 17S, R 29E	GRAYBURG JKSN SR-Q-G-SA(DO NOT USE)		0	O	Pumping	Jan 1969	Dec 1977	4 48
30-015-02993	SUNRAY MID- CONTINENT OIL COMPANY	DODD B	011	EDDY	S 15, T 17S, R 29E	ANDERSON POOL		0	O	Active	Apr 1957	Dec 1957	4 65
30-015-36658	COG OPERATING LLC	DODD FEDERAL UNIT	542	EDDY	S 10, T 17S, R 29E	GRAYBURG (JACKSON,SR-Q-G-SA)	JACKSON;SR-Q-G-SA	5,000	PO	Active Permit	Jul 2010	Jan 2011	5 35
30-015-00000	TOM BOYD	DODD B	004	EDDY	S 11, T 17S, R 29E	SQUARE LAKE GRAYBURG S A FACTOR Q TO 5M			AP	Unknown	Jan 1965	Dec 1965	5 42
30-015-25294	MARBOB ENERGY CORP	M DODD B	036	EDDY	S 14, T 17S, R 29E	GRAYBURG JACKSON	SR-Q-G-SA	4,533	PO	Pumping	Jan 1993	Mar 2008	5 97
30-015-34566	MARBOB ENERGY CORP	DODD FEDERAL UNIT NMNM111789X	101	EDDY	S 11, T 17S, R 29E	GRBG JACKSON SR Q GRBG SA		4,550	O	Active Permit	Jun 2006	Nov 2006	6 23
	MARBOB				S 11, T 17S,								

30-015-20077	ENERGY CORP	M DODD B	023	EDDY	R 29E	GRAYBURG JKSN SR-Q-G-SA(DO NOT USE)		0	O	Pumping	Sep 1967	Dec 1977	6 48
30-015-02994	MARBOB ENERGY CORP	M DODD B	016	EDDY	S 15, T 17S, R 29E	GRAYBURG JACKSON	SR-Q-G-SA	0	I	Plugged and Abandoned	Jun 1958	Dec 1959	6 58
30-015-02947	BOYD, TOM	DODD B	002	EDDY	S 11, T 17S, R 29E	ANDERSON POOL		0	O	Pumping	Mar 1947	Dec 1957	6 94
30-015-35854	MARBOB ENERGY CORP	DODD FEDERAL UNIT	119	EDDY	S 15, T 17S, R 29E	GRAYBURG JACKSON	SR-Q-G-SA	4,467	O	Active Permit	Mar 2008	Jan 2011	7 03
30-015-02980	SUNRAY MID-CONTINENT OIL COMPANY	DODD B	024	EDDY	S 14, T 17S, R 29E	ANDERSON POOL		3,580	PI	Injection Well	Jan 1957	Dec 1957	7 06
30-015-02953	BOYD, TOM	DODD B	003	EDDY	S 11, T 17S, R 29E	ANDERSON POOL		0	O	Pumping	Apr 1951	Dec 1957	10 42
30-015-02948	BOYD TOM	DODD B FED	011	EDDY	S 11, T 17S, R 29E	SQUARE LAKE GRAYBURG SA		2,521	PI	Injection Well	Jan 1958	Dec 1964	10 71
30-015-02946	MARBOB ENERGY CORP	M DODD B	015	EDDY	S 10, T 17S, R 29E	GRAYBURG JKSN SR-Q-G-SA(DO NOT USE)		2,456	O	Pumping	Jan 1967	Dec 1977	10 81
30-015-02864	SALSICH, NEIL E	STATE AA	001	EDDY	S 2, T 17S, R 29E	ANDERSON POOL		0	O	Pumping	Sep 1957	Dec 1957	13 97
30-015-37009	MEWBOURNE OIL CO	ORCA 11 FEDERAL COM	1	EDDY	S 11, T 17S, R 29E	GRAYBURG	MORROW (GAS)	10,975	G	Active Permit	Jun 2009	Jan 2011	14 42
30-015-02942	SUNRAY MID-CONTINENT OIL COMPANY	DODD B	010	EDDY	S 10, T 17S, R 29E	ANDERSON POOL			O	Active	Apr 1957	Dec 1957	15 65
30-015-36153	MARBOB ENERGY CORP	DODD FEDERAL UNIT	125	EDDY	S 10, T 17S, R 29E	GRAYBURG JACKSON	SR-Q-G-SA	5,000	O	Active Permit	Sep 2009	Jan 2011	17 55
30-015-02865	SALSICH, NEIL E	STATE AB	001	EDDY	S 2, T 17S, R 29E	ANDERSON POOL		2,586	O	Active	Oct 1957	Dec 1957	18 35
30-015-02943	SUNRAY MID-CONTINENT OIL COMPANY	DODD B	012	EDDY	S 10, T 17S, R 29E	ANDERSON POOL		2,482	O	Pumping	Mar 1957	Dec 1957	22 68
30-015-36154	MARBOB ENERGY CORP	DODD FEDERAL UNIT	124	EDDY	S 10, T 17S, R 29E	GRAYBURG JACKSON	SR-Q-G-SA	5,000	O	Active Permit	Sep 2009	Jan 2011	30 74
30-015-02944	SUNRAY MID-CONTINENT OIL COMPANY	DODD B	013	EDDY	S 10, T 17S, R 29E	ANDERSON POOL		2,478	O	Active	Oct 1957	Dec 1957	35 06
30-015-36155	COG OPERATING LLC	DODD FEDERAL UNIT	126	EDDY	S 11, T 17S, R 29E	GRAYBURG JACKSON	SR-Q-G-SA	5,000	O	Active Permit	Mar 2010	Jan 2011	39 52
30-015-36731	COG OPERATING LLC	DODD FEDERAL UNIT	131	EDDY	S 14, T 17S, R 29E	GRAYBURG (JACKSON,SR-Q-G-SA)	JACKSON,SR-Q-G-SA	5,010	O	Active Permit	Oct 2010	Jan 2011	46 52
30-015-36265	COG OPERATING LLC	DODD FEDERAL UNIT	132	EDDY	S 10, T 17S, R 29E	GRAYBURG JACKSON	SR-Q-G-SA	5,010	O	Active Permit	Oct 2010	Jan 2011	103 45
30-015-02878	STOUT, G KELLY	STATE	001	EDDY	S 3, T 17S, R 29E	ANDERSON POOL			O	Active	Jan 1949	Dec 1949	161 52
30-015-02868	C O FULTON	DUBLIN STATE	001	EDDY	S 3, T 17S, R 29E	SQUARE LAKE	GRAYBURG-SAN ANDRES	0	O	Shut-in	Jan 1950	Sep 2009	
30-015-02948	MARBOB ENERGY CORP	BOYD DODD B	011	EDDY	S 11, T 17S, R 29E	GRAYBURG JACKSON	SR-Q-G-SA	2,521	PI	Injection Well	Jan 1956	Dec 1967	
30-015-02978	MARBOB ENERGY CORP	M DODD B	27	EDDY	S 14, T 17S, R 29E	GRAYBURG JACKSON	SR-Q-G-SA	4,441	O	Pumping	Jan 1956	Jan 2011	

30-015-02980	MARBOB ENERGY CORP	M DODD B	024	EDDY	S 14, T 17S, R 29E	GRAYBURG JACKSON	SR-Q-G-SA	3,580	PI	Injection Well	Jun 1956	Dec 1959	
30-015-20029	MARBOB ENERGY CORP	M DODD B	017	EDDY	S 11, T 17S, R 29E	GRAYBURG JACKSON	SR-Q-G-SA	2,700	PI	Injection Well	May 1983	Sep 1983	
30-015-20162	MARBOB ENERGY CORP	M DODD B	007	EDDY	S 10, T 17S, R 29E	GRAYBURG JACKSON	SR-Q-G-SA	0	PI	Injection Well	Feb 1984	Feb 1984	
30-015-20165	MARBOB ENERGY CORP	M DODD B	006	EDDY	S 10, T 17S, R 29E	GRAYBURG JACKSON	SR-Q-G-SA	0	PI	Injection Well	Jul 1971	Feb 1984	
30-015-25341	MARBOB ENERGY CORP	M DODD B	22	EDDY	S 15, T 17S, R 29E	GRAYBURG JACKSON	SR-Q-G-SA	4,518	O	Pumping	Jan 1993	Jan 2011	
30-015-25456	MARBOB ENERGY CORP	M DODD B	25	EDDY	S 14, T 17S, R 29E	GRAYBURG JACKSON	SR-Q-G-SA	4,650	O	Pumping	Jan 1993	Jan 2011	
30-015-25790	MARBOB ENERGY CORP	M DODD B	23	EDDY	S 14, T 17S, R 29E	GRAYBURG JACKSON	SR-Q-G-SA	4,495	O	Pumping	Jan 1993	Jan 2011	
30-015-26309	MARBOB ENERGY CORP	DELTA WING FEDERAL	001	EDDY	S 15, T 17S, R 29E	SWD	UPPER PENN	10,950	D	Salt Water Disposal	Jan 2001	Jan 2011	
30-015-26359	MARBOB ENERGY CORP	DELTA WING FEDERAL	002	EDDY	S 11, T 17S, R 29E	GRAYBURG	MORROW (GAS)	10,910	PG	Pumping	Jun 1991	Jan 2011	
30-015-27882	MARBOB ENERGY CORP	SABER FEDERAL	001	EDDY	S 11, T 17S, R 29E	SWD	UPPER PENN	10,910	D	Salt Water Disposal	Jan 2001	Jan 2011	
30-015-37009	MEWBOURNE OIL CO	ORCA 11 FEDERAL COM	1	EDDY	S 11, T 17S, R 29E	GRAYBURG (ATOKA)	ATOKA	10,975	G	Active Permit	Jan 2010	Jan 2011	
30-015-37831	COG OPERATING LLC	EMPIRE FEDERAL SWD	3	EDDY	S 10, T 17S, R 29E	SWD (CISCO)	CISCO	9,200	U	Active Permit	Nov 2010	Jan 2011	



<http://drillinginfo.com/mapPrint.do?action=submit&ms=zMAVFr71HSmEOSnZ20C4ViH...> 4/19/2011