

District I
1625 N. French Dr., Hobbs, NM 88240
Phone: (575) 393-6161 Fax: (575) 393-0720
District II
811 S. First St., Artesia, NM 88210
Phone: (575) 748-1283 Fax: (575) 748-9720
District III
1000 Rio Brazos Road, Aztec, NM 87410
Phone: (505) 334-6178 Fax: (505) 334-6170
District IV
1220 S. St. Francis Dr., Santa Fe, NM 87505
Phone: (505) 476-3460 Fax: (505) 476-3462

State of New Mexico
Energy, Minerals & Natural Resources Department
OIL CONSERVATION DIVISION
1220 South St. Francis Dr.
Santa Fe, NM 87505

Form C-102
Revised August 1, 2011
Submit one copy to appropriate
District Office

☐ AMENDED REPORT

WELL LOCATION AND ACREAGE DEDICATION PLAT

¹ API Number 30-015-46117	² Pool Code 39350	³ Pool Name LIVINGSTON RIDGE; BONE SPRING
⁴ Property Code	⁵ Property Name BORA BORA 13-24 FED COM	⁶ Well Number 215H
⁷ OGRID No. 6137	⁸ Operator Name DEVON ENERGY PRODUCTION COMPANY, L.P.	⁹ Elevation 3507.0

¹⁰ Surface Location

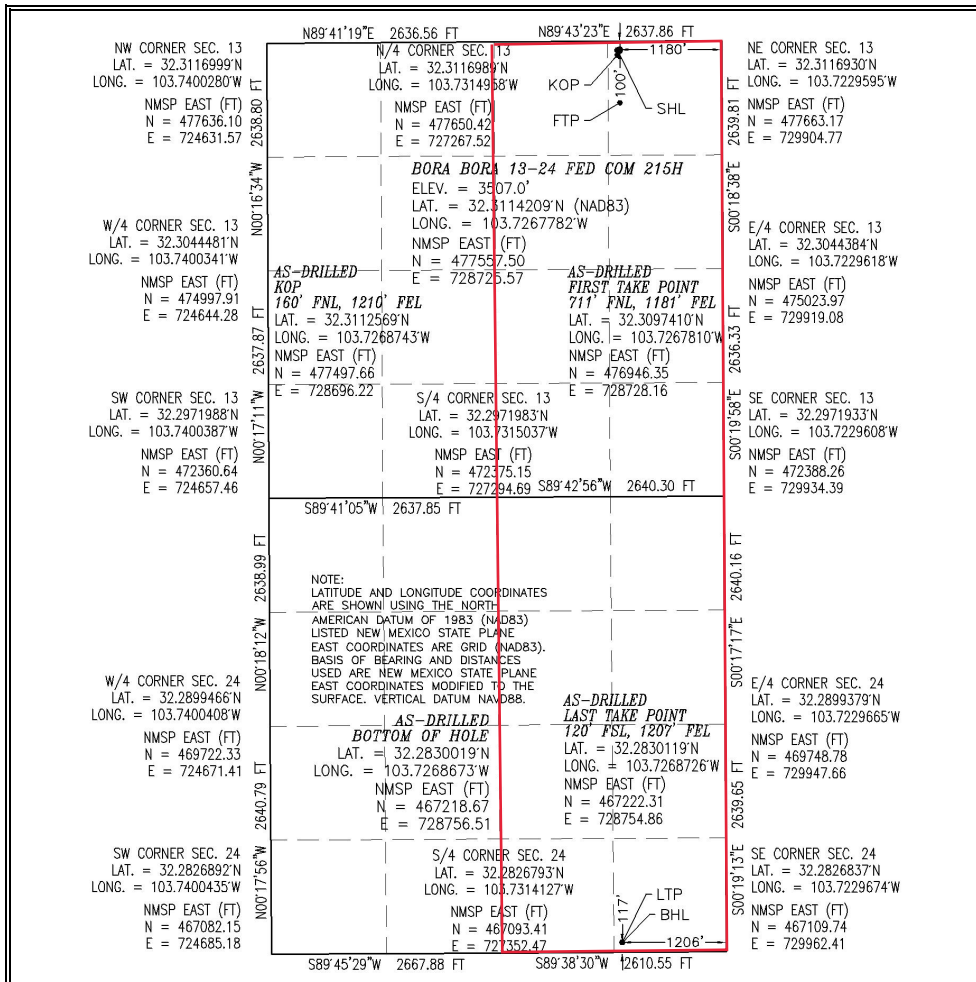
UL or lot no.	Section	Township	Range	Lot Idn	Feet from the	North/South line	Feet from the	East/West line	County
A	13	23 S	31 E		100	NORTH	1180	EAST	EDDY

¹¹ Bottom Hole Location If Different From Surface

UL or lot no.	Section	Township	Range	Lot Idn	Feet from the	North/South line	Feet from the	East/West line	County
P	24	23 S	31 E		117	SOUTH	1206	EAST	EDDY

¹² Dedicated Acres 640	¹³ Joint or Infill	¹⁴ Consolidation Code	¹⁵ Order No.
---	-------------------------------	----------------------------------	-------------------------

No allowable will be assigned to this completion until all interests have been consolidated or a non-standard unit has been approved by the division.



¹⁷ OPERATOR CERTIFICATION
I hereby certify that the information contained herein is true and complete to the best of my knowledge and belief, and that this organization either owns a working interest or unleased mineral interest in the land including the proposed bottom hole location or has a right to drill this well at this location pursuant to a contract with an owner of such a mineral or working interest, or to a voluntary pooling agreement or a compulsory pooling order heretofore entered by the division.

Signature: Rebecca Deal Date: 10/20/2020
Printed Name: Rebecca Deal, Regulatory Analyst
E-mail Address: rebecca.deal@dm.com

¹⁸ SURVEYOR CERTIFICATION
I hereby certify that the well location shown on this plat was plotted from field notes of actual surveys made by me or under my supervision, and that the same is true and correct to the best of my knowledge.

NOVEMBER 15, 2018
Date of Survey: NOVEMBER 15, 2018

Signature and Seal of Professional Surveyor: FILIMON F. JARAMILLO, PLS 12797
Certificate Number: FILIMON F. JARAMILLO, PLS 12797
SURVEY NO. 6675A

Intent ☐ As Drilled ☒

API #
30-015-46117

Operator Name:	Property Name:	Well Number
DEVON ENERGY PRODUCTION CO., L.P.	BORA BORA 13-24 FED COM	215H

Kick Off Point (KOP)

UL A	Section 13	Township 23S	Range 31E	Lot	Feet 160	From N/S NORTH	Feet 1210	From E/W EAST	County EDDY
Latitude 32.3112569					Longitude 103.7268743			NAD 83	

First Take Point (FTP)

UL A	Section 13	Township 23S	Range 31E	Lot	Feet 711	From N/S NORTH	Feet 1181	From E/W EAST	County EDDY
Latitude 32.3097410					Longitude 103.7267810			NAD 83	

Last Take Point (LTP)

UL P	Section 24	Township 23S	Range 31E	Lot	Feet 120	From N/S SOUTH	Feet 1207	From E/W EAST	County EDDY
Latitude 32.2830119					Longitude 103.7268726			NAD 83	

Is this well the defining well for the Horizontal Spacing Unit? ☒

Is this well an infill well? ☐

If infill is yes please provide API if available, Operator Name and well number for Defining well for Horizontal Spacing Unit.

API #

Operator Name:	Property Name:	Well Number

KZ 06/29/2018