

State of New Mexico
Energy, Minerals & Natural Resources
Department
OIL CONSERVATION DIVISION
1220 South St. Francis Dr.
Santa Fe, NM 87505

Revised August 1, 2011

Submit one copy to appropriate

District Office

☐ AMENDED REPORTDistrict I
1625 N. French Dr., Hobbs, NM 88240
Phone: (575) 393-6161 Fax: (575) 393-0720
District II
811 S. First St., Artesia, NM 88210
Phone: (575) 748-1283 Fax: (575) 748-9720
District III
1000 Rio Brazos Road, Aztec, NM 87410
Phone: (505) 334-6178 Fax: (505) 334-6170
District IV
1220 S. St. Francis Dr., Santa Fe, NM 87505
Phone: (505) 476-3460 Fax: (505) 476-3462

WELL LOCATION AND ACREAGE DEDICATION PLAT

¹ API Number 30-015-46493	² Pool Code 98220	³ Pool Name PURPLE SAGE;WOLFCAMP (GAS)
⁴ Property Code 326329	⁵ Property Name BOROS FEDERAL	⁶ Well Number 218H
⁷ OGRID No. 228937	⁸ Operator Name MATADOR PRODUCTION COMPANY	⁹ Elevation 3217'

¹⁰Surface Location

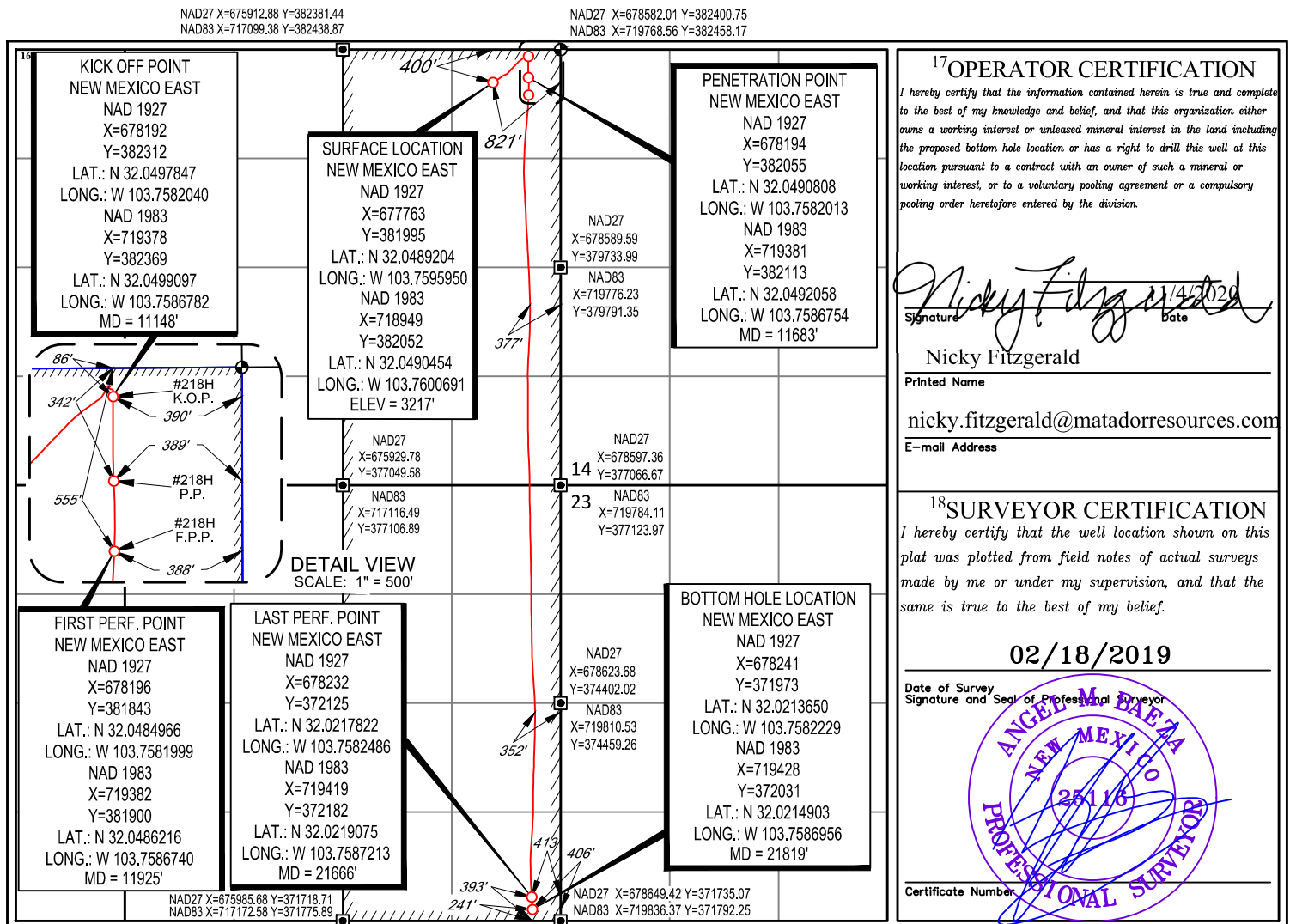
UL or lot no.	Section	Township	Range	Lot Idn	Feet from the	North/South line	Feet from the	East/West line	County
A	15	26-S	31-E	-	400'	NORTH	821'	EAST	EDDY

¹¹Bottom Hole Location If Different From Surface

UL or lot no.	Section	Township	Range	Lot Idn	Feet from the	North/South line	Feet from the	East/West line	County
P	22	26-S	31-E	-	241'	SOUTH	406'	EAST	EDDY

¹² Dedicated Acres 640	¹³ Joint or Infill	¹⁴ Consolidation Code	¹⁵ Order No.
--------------------------------------	-------------------------------	----------------------------------	-------------------------

No allowable will be assigned to this completion until all interests have been consolidated or a non-standard unit has been approved by the division.

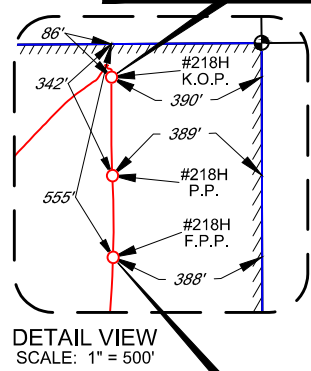
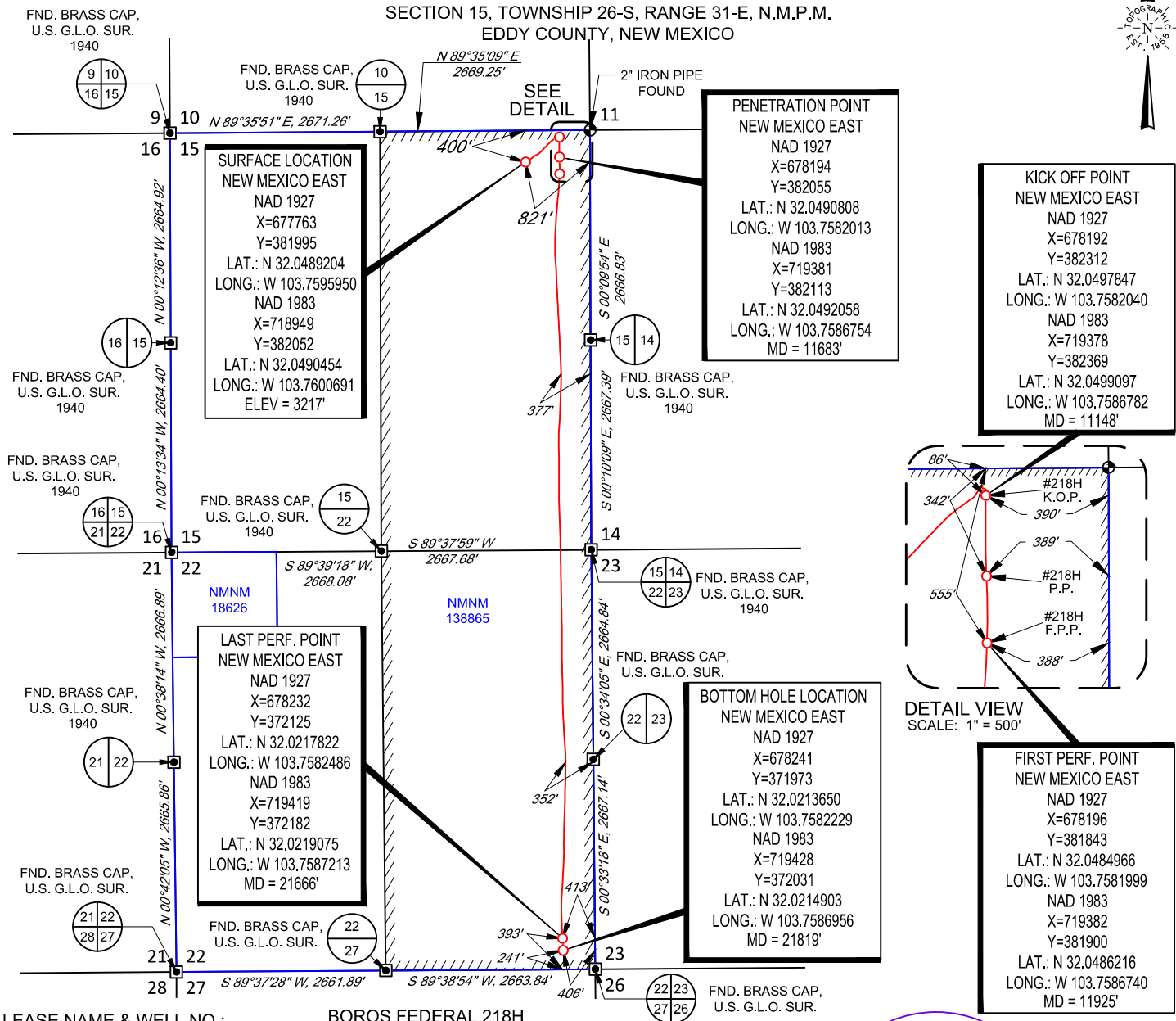
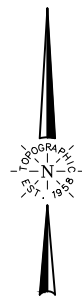


SCALE: 1" = 2000'

0' 1000' 2000'

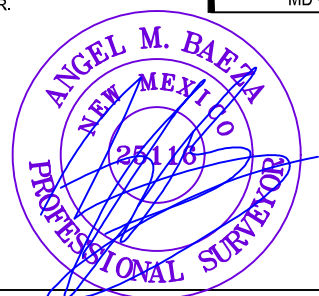


SECTION 15, TOWNSHIP 26-S, RANGE 31-E, N.M.P.M.
EDDY COUNTY, NEW MEXICO



TOPOGRAPHIC
LOYALTY INNOVATION LEGACY

1400 EVERMAN PARKWAY, Ste. 146 • FT. WORTH, TEXAS 76140
TELEPHONE: (817) 744-7512 • FAX (817) 744-7554
2903 NORTH BIG SPRING • MIDLAND, TEXAS 79705
TELEPHONE: (432) 682-1653 OR (800) 767-1653 • FAX (432) 682-1743
WWW.TOPOGRAPHIC.COM



Angel M. Baeza, P.S. No. 25116
October 13, 2020

BOROS FEDERAL 218H AS-DRILLED		REVISION:	NOTES:
DATE:	10/13/2020		
AD_BOROS_FEDERAL_218H			1. ORIGINAL DOCUMENT SIZE: 8.5" X 11" 2. ALL BEARINGS, DISTANCES, AND COORDINATE VALUES CONTAINED HEREIN ARE GRID BASED UPON THE NEW MEXICO COORDINATE SYSTEM OF 1983, EAST ZONE, U.S. SURVEY FEET. 3. THIS WELL LOCATION SHOWN HEREON HAS BEEN SURVEYED ON THE GROUND UNDER MY SUPERVISION AND PREPARED ACCORDING TO THE EVIDENCE FOUND AT THE TIME OF SURVEY, AND DATA PROVIDED BY MATADOR PRODUCTION COMPANY. THIS CERTIFICATION IS MADE AND LIMITED TO THOSE PERSONS OR ENTITIES SHOWN ON THE FACE OF THIS PLAT AND IS NON-TRANSFERABLE. THIS SURVEY IS CERTIFIED FOR THIS TRANSACTION ONLY.
DRAWN BY:	IMU		
SHEET :	2 OF 2		



MWD SURVEY CERTIFICATION
Gordon Technologies, LLC

State Of New Mexico

County Of Eddy

I, Bill Johnson certify that; I am employed by Gordon Technologies, LLC.;
that I did on the day(s) of December 28, 2109 through January 25, 2020 conduct
or supervise the taking of a MWD survey from a depth of 0 feet to a depth of
11,907 feet; that the data is true, correct, complete and within the limitations of the
tool set forth by Gordon Technologies, LLC.; that I am authorized and qualified to make this report;
that this survey was conducted at the request of Matador Production Co. for the
Boros Federal 218H Well, A.P.I. No. 30-015-46493 in
Wolfcamp Purple Sage Field and that I have reviewed this report and find that
it conforms to the principles and procedures set forth by Gordon Technologies, LLC.

Signature

MWD Coordinator

Title



Directional Survey Report

Company: **Matador Production Company**
 Well: **Boros Federal 218H**
 County: **Eddy County**
 State: **NM**
 Field: **Wolfcamp Purple Sage**
 API: **30-015-46493**
 Rig: **Patterson 256**
 Service Co: **GTMWD**
 Job #: **191293**
 Survey Calc: **Minimum Curvature**

Well Surface Location
 Latitude: **32.0489208**
 Longitude: **-103.7595939**
 Reference: **NAD 1927**
 Y (Northing): **381995**
 X (Easting): **677763**
 Field Engr: **O.SILVA**
C.BAXTER

Report Date: **Apr 08 2020**
 Time: **11:04**
 Mag Reference: **Grid North**
 Mag Correction: **6.30**
 Vert Sect. Azi: **179.64**
 Perm Datum: **Mean Sea Level**
 Depth Ref: **Rotary Table**
 RKB Height: **28.5**
 GL Elev: **3217**

Survey	MD	Inc	Azimuth	TVD	VS	Rectangular Offsets			Course		Closure		
						NS	EW	Length	DLS	Temp	Distance	Azimuth	Source
Tie In	0	0	0	0	0	0	0	0	0	0	0	0	
1	148.00	0.40	63.03	148.00	-0.23	0.23	0.46	148.00	0.27	66.20	0.52	63.03	Run 1
2	242.00	0.52	66.57	242.00	-0.55	0.55	1.14	94.00	0.13	68.00	1.27	64.22	Run 1
3	335.00	0.64	67.68	334.99	-0.91	0.92	2.01	93.00	0.13	68.00	2.21	65.48	Run 1
4	427.00	0.78	79.48	426.98	-1.21	1.23	3.10	92.00	0.22	69.80	3.34	68.42	Run 1
5	519.00	0.66	80.60	518.98	-1.40	1.43	4.24	92.00	0.13	71.60	4.48	71.39	Run 1
6	609.00	0.52	80.95	608.97	-1.54	1.58	5.16	90.00	0.16	73.40	5.39	72.99	Run 1
7	702.00	0.79	90.13	701.97	-1.60	1.64	6.21	93.00	0.31	73.40	6.43	75.20	Run 1
8	883.00	0.57	92.29	882.95	-1.55	1.60	8.36	181.00	0.12	75.20	8.51	79.15	Run 1
9	974.00	0.52	82.72	973.95	-1.58	1.64	9.22	91.00	0.11	77.00	9.37	79.93	Run 1
10	1066.00	0.14	45.52	1065.95	-1.71	1.77	9.72	92.00	0.45	75.20	9.88	79.68	Run 1
11	1161.00	0.13	347.52	1160.95	-1.89	1.96	9.78	95.00	0.14	0.00	9.97	78.69	Run 1
12	1256.00	0.25	331.94	1255.95	-2.18	2.24	9.66	95.00	0.14	78.80	9.91	76.92	Run 1
13	1351.00	0.30	22.00	1350.95	-2.60	2.66	9.65	95.00	0.25	80.60	10.01	74.61	Run 1
14	1435.00	0.36	3.18	1434.94	-3.06	3.12	9.75	84.00	0.15	84.20	10.24	72.23	Run 1
15	1511.00	0.45	351.25	1510.94	-3.60	3.66	9.72	76.00	0.16	78.80	10.38	69.37	Run 2
16	1606.00	0.81	353.62	1605.94	-4.63	4.69	9.59	95.00	0.38	84.20	10.67	63.91	Run 2
17	1702.00	1.20	354.22	1701.92	-6.31	6.37	9.41	96.00	0.41	89.60	11.36	55.91	Run 2
18	1797.00	1.67	49.58	1796.90	-8.19	8.26	10.36	95.00	1.47	98.60	13.25	51.46	Run 2
19	1892.00	1.74	52.92	1891.85	-9.94	10.02	12.57	95.00	0.13	100.40	16.07	51.43	Run 2
20	1987.00	1.80	49.56	1986.81	-11.77	11.86	14.85	95.00	0.13	102.20	19.01	51.39	Run 2
21	2080.00	1.87	50.00	2079.76	-13.68	13.78	17.13	93.00	0.08	102.20	21.98	51.17	Run 2
22	2174.00	2.85	53.83	2173.68	-16.02	16.15	20.19	94.00	1.06	102.20	25.85	51.34	Run 2
23	2269.00	4.78	55.69	2268.46	-19.61	19.77	25.37	95.00	2.04	102.20	32.16	52.06	Run 2
24	2364.00	5.17	58.39	2363.11	-24.04	24.25	32.28	95.00	0.48	100.40	40.37	53.09	Run 2
25	2459.00	5.26	59.37	2457.71	-28.46	28.71	39.67	95.00	0.13	104.00	48.97	54.11	Run 2
26	2553.00	5.15	63.49	2551.33	-32.49	32.79	47.16	94.00	0.41	105.80	57.43	55.19	Run 2
27	2648.00	5.09	61.57	2645.95	-36.35	36.70	54.68	95.00	0.19	104.00	65.85	56.13	Run 2
28	2743.00	4.69	61.09	2740.60	-40.19	40.58	61.78	95.00	0.42	107.60	73.92	56.70	Run 2
29	2837.00	4.42	64.78	2834.30	-43.55	43.98	68.42	94.00	0.42	111.20	81.34	57.27	Run 2
30	2932.00	4.79	56.99	2929.00	-47.23	47.70	75.06	95.00	0.76	122.00	88.94	57.56	Run 2
31	3027.00	5.66	51.98	3023.60	-52.23	52.75	82.08	95.00	1.03	125.60	97.57	57.27	Run 2
32	3122.00	5.57	54.31	3118.15	-57.76	58.33	89.51	95.00	0.26	131.00	106.84	56.91	Run 2
33	3216.00	5.30	53.58	3211.72	-62.96	63.56	96.71	94.00	0.30	132.80	115.73	56.68	Run 2
34	3311.00	6.04	51.98	3306.26	-68.59	69.25	104.18	95.00	0.80	132.80	125.10	56.39	Run 2
35	3406.00	6.36	52.73	3400.70	-74.81	75.51	112.31	95.00	0.35	136.40	135.33	56.08	Run 2
36	3500.00	6.17	59.31	3494.14	-80.48	81.24	120.79	94.00	0.79	138.20	145.57	56.08	Run 2
37	3595.00	5.86	65.64	3588.62	-85.03	85.85	129.60	95.00	0.77	143.60	155.46	56.48	Run 2
38	3690.00	5.96	58.42	3683.12	-89.56	90.43	138.22	95.00	0.79	138.20	165.18	56.80	Run 2
39	3785.00	6.14	63.88	3777.59	-94.33	95.25	146.98	95.00	0.63	140.00	175.15	57.05	Run 2
40	3880.00	5.54	73.79	3872.10	-97.79	98.77	155.95	95.00	1.23	143.60	184.60	57.65	Run 2
41	3975.00	5.55	63.80	3966.66	-101.04	102.08	164.47	95.00	1.01	145.40	193.58	58.17	Run 2
42	4070.00	6.44	48.71	4061.14	-106.54	107.62	172.60	95.00	1.90	143.60	203.41	58.05	Run 2
43	4127.00	6.57	43.26	4117.78	-110.99	112.11	177.24	57.00	1.11	143.60	209.72	57.69	Run 2
44	4261.00	6.29	43.83	4250.93	-121.80	122.99	187.57	134.00	0.21	96.80	224.30	56.75	Run 3
45	4356.00	6.19	43.37	4345.37	-129.24	130.46	194.70	95.00	0.12	100.40	234.36	56.17	Run 3
46	4450.00	6.05	42.81	4438.83	-136.51	137.78	201.54	94.00	0.16	102.20	244.14	55.64	Run 3
47	4546.00	6.31	43.48	4534.28	-144.01	145.32	208.61	96.00	0.28	104.00	254.24	55.14	Run 3
48	4640.00	6.16	43.40	4627.72	-151.37	152.73	215.63	94.00	0.16	107.60	264.24	54.69	Run 3

49	4736.00	6.05	42.74	4723.17	-158.79	160.19	222.60	96.00	0.14	109.40	274.25	54.26	Run 3
50	4830.00	6.29	43.92	4816.63	-166.09	167.54	229.54	94.00	0.29	111.20	284.18	53.87	Run 3
51	4925.00	6.43	44.22	4911.05	-173.61	175.10	236.86	95.00	0.15	113.00	294.55	53.53	Run 3
52	5020.00	6.19	43.36	5005.47	-181.10	182.63	244.08	95.00	0.27	111.20	304.85	53.19	Run 3
53	5114.00	5.93	44.64	5098.94	-188.19	189.77	250.97	94.00	0.31	113.00	314.65	52.91	Run 3
54	5210.00	6.01	44.36	5194.42	-195.27	196.90	257.97	96.00	0.09	114.80	324.53	52.65	Run 3
55	5305.00	5.98	43.72	5288.90	-202.36	204.03	264.87	95.00	0.08	116.60	334.34	52.39	Run 3
56	5399.00	6.30	42.00	5382.37	-209.69	211.40	271.70	94.00	0.39	114.80	344.26	52.12	Run 3
57	5495.00	6.54	43.24	5477.76	-217.54	219.30	278.97	96.00	0.29	114.80	354.85	51.83	Run 3
58	5589.00	6.54	45.24	5571.15	-225.16	226.97	286.44	94.00	0.24	114.80	365.46	51.61	Run 3
59	5685.00	6.37	45.87	5666.54	-232.67	234.52	294.15	96.00	0.19	114.80	376.20	51.43	Run 3
60	5780.00	6.31	45.61	5760.96	-239.95	241.85	301.66	95.00	0.07	116.60	386.64	51.28	Run 3
61	5874.00	6.19	46.79	5854.40	-246.98	248.93	309.04	94.00	0.19	118.40	396.83	51.15	Run 3
62	5970.00	6.40	49.42	5949.82	-253.96	255.95	316.88	96.00	0.37	118.40	407.34	51.07	Run 3
63	6065.00	6.22	48.81	6044.25	-260.74	262.79	324.77	95.00	0.20	120.20	417.77	51.02	Run 3
64	6160.00	4.04	51.81	6138.86	-266.16	268.25	331.28	95.00	2.31	116.60	426.26	51.00	Run 3
65	6255.00	4.15	53.62	6233.62	-270.23	272.35	336.68	95.00	0.18	118.40	433.04	51.03	Run 3
66	6350.00	4.19	55.08	6328.37	-274.22	276.38	342.29	95.00	0.12	118.40	439.94	51.08	Run 3
67	6445.00	3.91	54.51	6423.13	-278.06	280.25	347.77	95.00	0.30	118.40	446.64	51.14	Run 3
68	6540.00	3.86	54.65	6517.91	-281.75	283.98	353.02	95.00	0.05	118.40	453.06	51.19	Run 3
69	6635.00	3.91	53.69	6612.70	-285.49	287.74	358.24	95.00	0.09	118.40	459.49	51.23	Run 3
70	6729.00	3.95	53.56	6706.47	-289.28	291.57	363.42	94.00	0.04	120.20	465.93	51.26	Run 3
71	6825.00	3.97	54.31	6802.24	-293.15	295.47	368.78	96.00	0.06	118.40	472.55	51.30	Run 3
72	6920.00	3.56	54.82	6897.04	-296.73	299.09	373.86	95.00	0.43	118.40	478.78	51.34	Run 3
73	7015.00	3.37	54.67	6991.87	-300.02	302.40	378.55	95.00	0.20	118.40	484.51	51.38	Run 3
74	7107.00	3.46	56.21	7083.70	-303.10	305.51	383.07	92.00	0.14	116.60	489.97	51.43	Run 3
75	7201.00	3.46	58.95	7177.53	-306.11	308.55	387.85	94.00	0.18	116.60	495.61	51.50	Run 3
76	7297.00	4.02	35.41	7273.33	-310.31	312.79	392.29	96.00	1.69	113.00	501.72	51.43	Run 3
77	7392.00	4.55	34.75	7368.07	-316.10	318.60	396.36	95.00	0.56	114.80	508.53	51.21	Run 3
78	7486.00	4.41	34.56	7461.78	-322.11	324.64	400.54	94.00	0.15	116.60	515.58	50.98	Run 3
79	7581.00	4.12	36.94	7556.52	-327.82	330.37	404.66	95.00	0.36	118.40	522.39	50.77	Run 3
80	7676.00	3.87	37.45	7651.29	-333.07	335.64	408.66	95.00	0.27	120.20	528.83	50.60	Run 3
81	7770.00	3.65	39.16	7745.08	-337.88	340.48	412.48	94.00	0.26	122.00	534.85	50.46	Run 3
82	7865.00	3.34	42.48	7839.91	-342.25	344.87	416.26	95.00	0.39	122.00	540.56	50.36	Run 3
83	7959.00	0.69	72.73	7933.84	-344.42	347.06	418.65	94.00	2.94	120.20	543.80	50.34	Run 3
84	8054.00	0.38	85.50	8028.84	-344.61	347.25	419.51	95.00	0.35	122.00	544.58	50.38	Run 3
85	8148.00	0.14	71.33	8122.84	-344.67	347.31	419.93	94.00	0.26	125.60	544.95	50.41	Run 3
86	8242.00	0.24	295.65	8216.84	-344.79	347.43	419.86	94.00	0.38	127.40	544.97	50.39	Run 3
87	8337.00	0.86	260.38	8311.83	-344.76	347.40	418.98	95.00	0.71	129.20	544.27	50.34	Run 3
88	8432.00	1.29	263.33	8406.81	-344.53	347.16	417.21	95.00	0.46	131.00	542.76	50.24	Run 3
89	8526.00	0.55	257.21	8500.80	-344.32	346.93	415.72	94.00	0.79	132.80	541.47	50.15	Run 3
90	8621.00	0.69	242.21	8595.80	-343.95	346.57	414.77	95.00	0.22	134.60	540.50	50.12	Run 3
91	8716.00	1.01	259.97	8690.79	-343.55	346.15	413.44	95.00	0.43	136.40	539.22	50.06	Run 3
92	8811.00	0.35	31.11	8785.78	-343.66	346.26	412.77	95.00	1.33	136.40	538.77	50.01	Run 3
93	8906.00	0.81	7.68	8880.78	-344.57	347.17	413.01	95.00	0.54	136.40	539.54	49.95	Run 3
94	9001.00	0.94	342.07	8975.77	-345.98	348.58	412.86	95.00	0.43	138.20	540.33	49.83	Run 3
95	9096.00	1.09	126.09	9070.76	-346.18	348.79	413.35	95.00	2.03	138.20	540.84	49.84	Run 3
96	9191.00	1.62	129.77	9165.73	-344.78	347.40	415.11	95.00	0.57	141.80	541.29	50.07	Run 3
97	9285.00	1.31	139.31	9259.70	-343.10	345.73	416.83	94.00	0.42	145.40	541.55	50.33	Run 3
98	9381.00	1.25	170.34	9355.68	-341.23	343.87	417.72	96.00	0.72	147.20	541.05	50.54	Run 3
99	9475.00	1.20	153.32	9449.66	-339.34	341.98	418.33	94.00	0.39	149.00	540.33	50.74	Run 3
100	9570.00	0.95	140.79	9544.64	-337.84	340.48	419.28	95.00	0.36	147.20	540.11	50.92	Run 3
101	9665.00	1.02	118.49	9639.63	-336.81	339.46	420.52	95.00	0.41	149.00	540.44	51.09	Run 3
102	9760.00	0.98	87.99	9734.61	-336.43	339.09	422.08	95.00	0.56	150.80	541.41	51.22	Run 3
103	9855.00	0.84	97.11	9829.60	-336.36	339.03	423.58	95.00	0.21	152.60	542.55	51.33	Run 3
104	9948.00	0.93	107.37	9922.59	-336.04	338.72	424.98	93.00	0.20	154.40	543.45	51.44	Run 3
105	10043.00	1.23	111.15	10017.57	-335.44	338.12	426.66	95.00	0.32	156.20	544.40	51.60	Run 3
106	10138.00	0.99	126.52	10112.56	-334.57	337.27	428.27	95.00	0.40	158.00	545.13	51.78	Run 3
107	10233.00	1.21	148.30	10207.54	-333.22	335.93	429.46	95.00	0.49	159.80	545.23	51.97	Run 3
108	10328.00	2.20	177.45	10302.50	-330.54	333.25	430.07	95.00	1.35	159.80	544.07	52.23	Run 3
109	10423.00	2.43	191.45	10397.42	-326.75	329.45	429.75	95.00	0.64	161.60	541.50	52.53	Run 3
110	10518.00	0.76	190.88	10492.38	-324.16	326.86	429.23	95.00	1.76	156.20	539.52	52.71	Run 3
111	10613.00	0.74	172.35	10587.37	-322.93	325.63	429.19	95.00	0.26	158.00	538.74	52.81	Run 3
112	10707.00	1.04	186.86	10681.36	-321.48	324.19	429.17	94.00	0.40	158.00	537.85	52.93	Run 3
113	10802.00	1.22	190.58	10776.34	-319.64	322.34	428.88	95.00	0.20	159.80	536.51	53.07	Run 3
114	10896.00	0.28	147.99	10870.33	-318.46	321.16	428.82	94.00	1.10	159.80	535.75	53.17	Run 3
115	10991.00	0.44	93.42	10965.33	-318.24	320.94	429.31	95.00	0.38	159.80	536.01	53.22	Run 3
116	11097.00	0.86	189.17	11071.33	-317.42	320.13	429.59	106.00	0.95	149.00	535.75	53.31	Run 4

117	11192.00	6.81	184.64	11166.07	-311.10	313.81	429.02	95.00	6.27	149.00	531.54	53.82	Run 4
118	11287.00	19.87	179.45	11258.31	-289.25	291.95	428.72	95.00	13.79	152.60	518.68	55.75	Run 4
119	11382.00	30.34	178.95	11344.22	-249.00	251.71	429.31	95.00	11.02	152.60	497.66	59.62	Run 4
120	11477.00	37.18	180.85	11423.15	-196.25	198.95	429.33	95.00	7.28	156.20	473.18	65.14	Run 4
121	11572.00	38.84	179.42	11498.00	-137.76	140.46	429.20	95.00	1.98	156.20	451.60	71.88	Run 4
122	11667.00	50.13	177.63	11565.67	-71.32	74.03	431.02	95.00	11.96	159.80	437.33	80.25	Run 4
123	11761.00	58.27	178.22	11620.61	4.83	-2.10	433.75	94.00	8.67	161.60	433.76	90.28	Run 4
124	11856.00	66.74	180.30	11664.43	89.01	-86.28	434.78	95.00	9.12	163.40	443.26	101.22	Run 4
PTB	11907.00	71.10	180.00	11682.77	136.58	-133.86	434.66	51.00	8.57	0.00	454.80	107.12	Run 4



Drilling Group

Geo Market Area: South West Texas Basin

7220 W I-H 20

Midland, Texas 79706

Phone : (432) 742-5400 (Main)

Fax : (432) 742-5606 (Shared)

April 21, 2020

Matador Production Company
5400 LBJ Freeway, Suite 1500
Dallas, TX 75240

Re:

S15, T26S, R31E Eddy, NM
N 32.0490454 W -103.7600691

CLIENT: Matador Production Company
WELL: Boros Federal 218H
FIELD: Wolfcamp Purple Sage

RIG: Cactus 163
COUNTY: Eddy
API NO: 30-015-46493
JOB NO: 20MLD0900

Enclosed, please find the original copy of the survey performed on the referenced well by Drilling & Measurements, a division of Schlumberger Technology Corporation (P-5 No. 754900).
Other information required by your office is as follows.

<u>Name & Title of Surveyor</u>	<u>Drainhole Number</u>	<u>Surveyed Depths</u>	<u>Dates Performed</u>	<u>Type of Survey</u>
Andres Hernandez FE	Boros Federal 218H Original Hole	11945.00 Ft to 15624.00 Ft	April 8, 2020 to April 13, 2020	E-Mag

Oilfield Services, Central U.S. Land
Schlumberger Drilling and Measurements
Drilling Group
Geo Market Area: South West Texas Basin
7220 W I-H 20
Midland, Texas 79706
Phone : (432) 742-5400 (Main)
Fax : (432) 742-5606 (Shared)

Schlumberger

Well Reference:
S15, T26S, R31E Eddy, NM
N 32.0490454 W -103.7600691

I, Andres Hernandez certify that; I am employed by Drilling & Measurements, a division of Schlumberger Technology Corporation; that I did on the day(s) of April 08, 2020 through April 13, 2020, conduct or supervise the taking of the E-Mag surveys from a depth of 11945.00 feet to a depth of 15624.00 feet referenced to driller's depth; that the data is true, correct, complete and within the limitations of the tool as set forth by Drilling & Measurements, a division of Schlumberger Technology Corporation; that I am authorized and qualified to make this report; that this survey was conducted at the request of Matador Production Company for the Boros Federal 218H Well (Original Hole) API No. 30-015-46493 in New Mexico; and that I have reviewed this report and find that it conforms to the principals and procedures as set forth by Drilling & Measurements, a division of Schlumberger Technology Corporation.

By
Andres Hernandez
FE ANDRES HERNANDEZ

Subscribed and Sworn to before me this 21 day of April (month) 2020 (yr)

My Commission expires:

6/14/23
Jean Paul Langlois

(signature)

Notary Public

Comanche Oklahoma

(County State)



Matador Boros Federal 218H MWD Surveys Off to 15738ft MD Survey

Geodetic Report

(Def Survey)

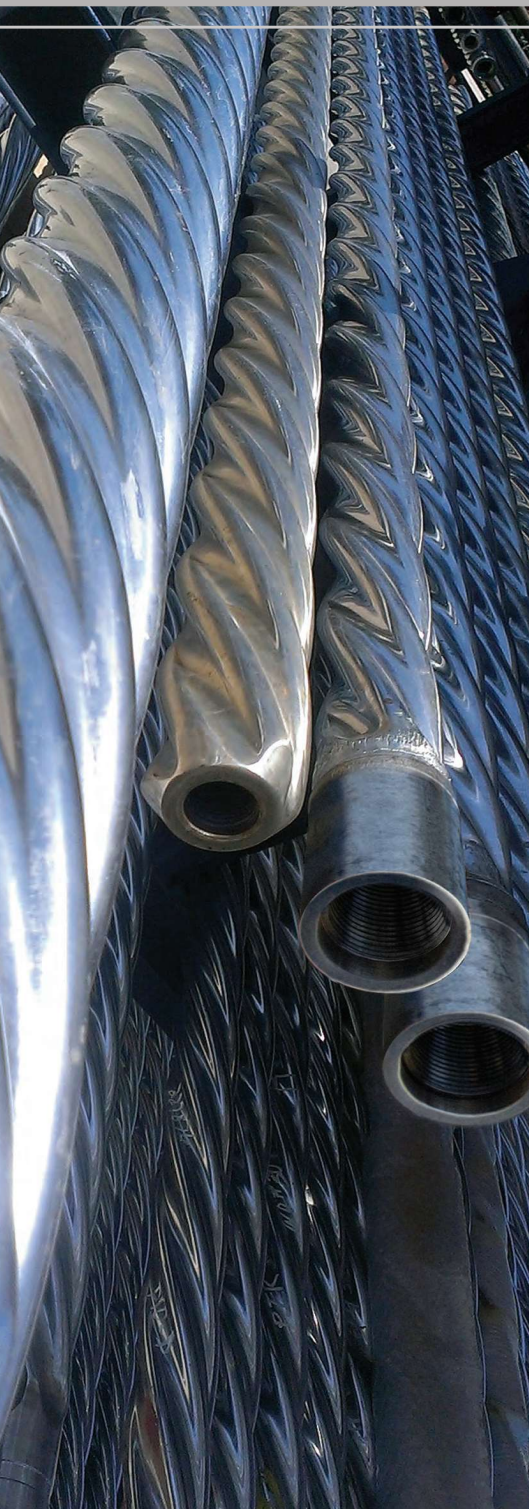


Report Date: April 15, 2020 - 10:02 AM
Client: Matador
Field: NM Eddy County (NAD 27)
Structure / Slot: Matador Boros Federal 218H / New Slot
Well: Boros Federal 218H
Borehole: Boros Federal 218H
UWI / API#: Unknown / Unknown
Survey Name: Matador Boros Federal 218H MWD Surveys Off to 15738ft MD
Survey Date: March 31, 2020
Tort / AHD / DDI / ERD Ratio: 181,769' / 4874,638 ft / 6,072' / 0.412
Coordinate Reference System: NAD27 New Mexico State Plane, Eastern Zone, US Feet
Location Lat / Long: N 32° 2' 56.11503", W 103° 45' 34.5378"
Location Grid N/E Y/X: N 381995,000 RUS, E 677763,000 RUS
CRS Grid Convergence Angle: 0.3045 °
Grid Scale Factor: 0.99994528
Version / Patch: 2.10,810.1

Survey / DLS Computation: Minimum Curvature / Lubinski
Vertical Section Azimuth: 179,640 ° (Grid North)
Vertical Section Origin: 0,000 ft, 0,000 ft
TVD Reference Datum: RKB
TVD Reference Elevation: 3245,500 ft above MSL
Seabed / Ground Elevation: 3217,000 ft above MSL
Magnetic Declination: 6,571 °
Total Gravity Field Strength: 998,4260mgm (9,80665 Based)
Gravity Model: GARM
Total Magnetic Field Strength: 47852,122 nT
Magnetic Dip Angle: 59,628 °
Declination Date: March 31, 2020
Magnetic Declination Model: HDGM 2020
North Reference: Grid North
Grid Convergence Used: 0.3045 °
Total Corr Mag North->Grid North: 6,2661 °
Local Coord Referenced To: Well Head

Comments	MD (ft)	Incl (°)	Azim Grid (°)	TVD (ft)	VSEC (ft)	NS (ft)	EW (ft)	DLS (°/100ft)	Northing (RUS)	Easting (RUS)	Latitude (°)	Longitude (°)	Closure (ft)	Closure Azimuth (°)
Surface Location	0.00	0.00	0.00	0.00	0.00	0.00	0.00	N/A	381995.00	677763.00	32.048921	-103.759594	0.00	0.00
	148.00	0.40	63.03	148.00	-0.23	0.23	0.46	0.27	381995.23	677763.46	32.048921	-103.759592	0.52	63.03
	242.00	0.52	66.57	242.00	-0.55	0.55	1.14	0.13	381995.55	677764.14	32.048922	-103.759590	1.27	64.22
	335.00	0.64	67.68	334.99	-0.91	0.92	2.01	0.13	381995.92	677765.01	32.048923	-103.759587	2.21	65.48
	427.00	0.78	79.48	426.98	-1.21	1.23	3.10	0.22	381996.23	677766.10	32.048924	-103.759584	3.34	68.42
	519.00	0.66	80.60	518.98	-1.40	1.43	4.24	0.13	381996.43	677767.24	32.048925	-103.759580	4.48	71.39
	609.00	0.52	80.95	608.97	-1.54	1.58	5.16	0.16	381996.58	677768.16	32.048925	-103.759577	5.39	72.99
	702.00	0.79	90.13	701.97	-1.60	1.64	6.21	0.31	381996.64	677769.21	32.048925	-103.759574	6.43	75.20
	883.00	0.57	92.29	882.95	-1.55	1.60	8.36	0.12	381996.60	677771.36	32.048925	-103.759567	8.51	79.15
	974.00	0.52	82.72	973.95	-1.58	1.64	9.22	0.11	381996.64	677772.22	32.048925	-103.759564	9.37	79.93
	1066.00	0.14	45.52	1065.95	-1.71	1.77	9.72	0.45	381996.77	677772.72	32.048926	-103.759562	9.88	79.68
	1161.00	0.13	347.52	1160.95	-1.89	1.96	9.78	0.14	381996.96	677772.78	32.048926	-103.759562	9.97	78.69
	1256.00	0.25	331.94	1255.95	-2.18	2.24	9.66	0.14	381997.24	677772.66	32.048927	-103.759563	9.91	76.92
	1351.00	0.30	22.00	1350.95	-2.60	2.66	9.65	0.25	381997.66	677772.65	32.048928	-103.759563	10.01	74.61
	1435.00	0.36	3.18	1434.94	-3.06	3.12	9.75	0.15	381998.12	677772.75	32.048929	-103.759562	10.24	72.23
	1511.00	0.45	351.25	1510.94	-3.60	3.66	9.72	0.16	381998.66	677772.72	32.048931	-103.759562	10.38	69.37
	1606.00	0.81	353.62	1605.94	-4.63	4.69	9.59	0.38	381999.69	677772.58	32.048934	-103.759563	10.67	63.91
	1702.00	1.20	354.22	1701.92	-6.31	6.37	9.41	0.41	382001.37	677772.41	32.048938	-103.759563	11.36	55.91
	1797.00	1.67	49.58	1796.90	-8.19	8.26	10.36	1.47	382003.26	677773.36	32.048943	-103.759560	13.25	51.46
	1892.00	1.74	52.92	1891.85	-9.94	10.02	12.57	0.13	382005.02	677775.57	32.048948	-103.759553	16.07	51.43
	1987.00	1.80	49.56	1986.81	-11.77	11.86	14.85	0.13	382006.86	677777.85	32.048953	-103.759546	19.01	51.39
	2080.00	1.87	50.00	2079.76	-13.68	13.78	17.13	0.08	382008.78	677780.13	32.048958	-103.759538	21.98	51.17
	2174.00	2.85	53.83	2173.68	-16.02	16.15	20.19	1.06	382011.15	677783.19	32.048965	-103.759528	25.85	51.34
	2269.00	4.78	55.69	2268.46	-19.61	19.77	25.37	2.04	382014.77	677788.36	32.048975	-103.759512	32.16	52.06
	2364.00	5.17	58.39	2363.11	-24.04	24.25	32.28	0.48	382019.25	677795.28	32.048987	-103.759489	40.37	53.09
	2459.00	5.26	59.37	2457.71	-28.46	28.71	39.67	0.13	382023.71	677802.67	32.048999	-103.759465	48.97	54.11
	2553.00	5.15	63.49	2551.33	-32.49	32.79	47.16	0.41	382027.79	677810.15	32.049010	-103.759441	57.43	55.19
	2648.00	5.09	61.57	2645.95	-36.35	36.70	54.68	0.19	382031.70	677817.67	32.049021	-103.759417	65.85	56.13
	2743.00	4.69	61.09	2740.60	-40.19	40.58	61.78	0.42	382035.58	677824.78	32.049031	-103.759394	73.92	56.70
	2837.00	4.42	64.78	2834.30	-43.55	43.98	68.42	0.42	382038.98	677831.42	32.049041	-103.759372	81.34	57.27
	2932.00	4.79	56.99	2929.00	-47.23	47.70	75.06	0.76	382042.70	677838.06	32.049051	-103.759351	88.94	57.56
	3027.00	5.66	51.98	3023.60	-52.23	52.75	82.08	1.03	382047.75	677845.07	32.049065	-103.759328	97.57	57.27
	3122.00	5.57	54.31	3118.15	-57.76	58.33	89.51	0.26	382053.32	677852.51	32.049080	-103.759304	106.84	56.91
	3216.00	5.30	53.58	3211.72	-62.96	63.56	96.71	0.30	382058.56	677859.71	32.049094	-103.759281	115.73	56.68
	3311.00	6.04	51.98	3306.26	-68.59	69.25	104.18	0.80	382064.24	677867.17	32.049110	-103.759256	125.10	56.39
	3406.00	6.36	52.73	3400.70	-74.81	75.51	112.31	0.35	382070.51	677875.30	32.049127	-103.759230	135.33	56.08
	3500.00	6.17	59.31	3494.14	-80.48	81.24	120.79	0.79	382076.24	677883.79	32.049142	-103.759203	145.57	56.08
	3595.00	5.86	65.64	3588.62	-85.03	85.85	129.60	0.77	382080.85	677892.59	32.049155	-103.759174	155.46	56.48
	3690.00	5.96	58.42	3683.12	-89.56	90.43	138.22	0.79	382085.43	677901.21	32.049167	-103.759146	165.18	56.80
	3785.00	6.14	63.88	3777.59	-94.33	95.25	146.98	0.63	382090.25	677909.98	32.049181	-103.759118	175.15	57.05
3880.00	5.54	73.79	3872.10	-97.79	98.77	155.95	1.23	382093.76	677918.94	32.049190	-103.759089	184.60	57.65	
3975.00	5.55	63.80	3966.66	-101.04	102.08	164.47	1.01	382097.07	677927.47	32.049199	-103.759061	193.58	58.17	
4070.00	6.44	48.71	4061.14	-106.54	107.62	172.60	1.90	382102.62	677935.59	32.049214	-103.759035	203.41	58.05	
4127.00	6.57	43.26	4117.78	-110.99	112.11	177.24	1.11	382107.10	677940.23	32.049226	-103.759020	209.72	57.69	
4261.00	6.29	43.83	4250.93	-121.80	122.99	187.57	0.21	382117.98	677950.56	32.049256	-103.758986	224.30	56.75	
4356.00	6.19	43.37	4345.37	-129.24	130.46	194.70	0.12	382125.46	677957.68	32.049277	-103.758963	234.36	56.17	
4450.00	6.05	42.81	4438.83	-136.51	137.78	201.54	0.16	382132.77	677964.53	32.049297	-103.758941	244.14	55.64	
4546.00	6.31	43.48	4534.28	-144.01	145.32	208.61	0.28	382140.31	677971.60	32.049317	-103.758918	254.24	55.14	
4640.00	6.16	43.40	4627.72	-151.37	152.73	215.63	0.16	382147.72	677978.62	32.049338	-103.758895	264.24	54.69	
4736.00	6.05	42.74	4723.17	-158.79	160.19	222.60	0.14	382155.18	677985.59	32.049358	-103.758873	274.25	54.26	
4830.00	6.29	43.92	4816.63	-166.09	167.54	229.54	0.29	382162.53	677992.52	32.049378	-103.758850	284.18	53.87	
4925.00	6.43	44.22	4911.05	-173.61	175.10	236.86	0.15	382170.09	677999.84	32.049399	-103.758826	294.55	53.53	
5020.00	6.19	43.36	5005.47	-181.10	182.63	244.08	0.27	382177.62	678007.07	32.049419	-103.758803	304.85	53.19	
5114.00	5.93	44.64	5098.94	-188.19	189.77	250.97	0.31	382184.76	678013.96	32.049439	-103.758781	314.65	52.91	
5210.00	6.01	44.36	5194.42	-195.27	196.90	257.97	0.09	382191.89	678020.96	32.049458	-103.758758	324.53	52.65	
5305.00	5.98	43.72	5288.90	-202.36	204.03	264.87	0.08	382199.02	678027.85	32.049478	-103.758736	334.34	52.39	
5399.00	6.30	42.00	5382.37	-209.69	211.40	271.70	0.39	382206.39	678034.69	32.049498	-103.758713	344.28	52.12	
5495.00	6.54	43.24	5477.76	-217.54	219.30	278.97	0.29	382214.28	678041.96	32.049520	-103.758690	354.85	51.83	
5589.00	6.54	45.24	5571.15	-225.16	226.97	286.44	0.24	382221.95	678049.43	32.049541	-103.758666	365.46	51.61	
5685.00	6.37	45.87	5666.54	-232.67	234.52	294.15	0.19	382229.51	678057.13	32.049561	-103.758641	376.20	51.43	
5780.00	6.31	45.61	5760.96	-239.95	241.85	301.66	0.07	382236.83	678064.64	32.049581	-103.758616	386.64	51.28	
5874.00	6.19	46.79	5854.40	-246.98	248.93	309.04	0.19	382243.91	678072.03	32.049601	-103.758592	396.83	51.15	
5970.00	6.40	49.42	5949.82	-253.96	255.95	316.88	0.37	382250.94	678079.86	32.049620	-103.758567	407.34	51.07	
6065.00	6.22	48.81	6044.25	-260.74	262.79	324.77	0.20	382257.77	678087.76	32.049638	-103.758541	417.77	51.02	
6160.00	4.04	51.81	6138.86	-266.16	268.25	331.28	2.31	382263.23	678094.26	32.049653	-103.758520	426.26	51.00	
6255.00	4.15	53.62	6233.62	-270.23	272.35	336.68	0.18	382267.34	678099.66	32.049665	-103.758503	433.04	51.03	
6350.00	4.19	55.08	6328.37	-274.22	276.38	342.29	0.12	382271.36	678105.27	32.049676	-103.758484	439.94	51.0	

Comments	MD (ft)	Incl (°)	Azim Grid (°)	TVD (ft)	VSEC (ft)	NS (ft)	EW (ft)	DLS (°/100ft)	Northing (ftUS)	Easting (ftUS)	Latitude (°)	Longitude (°)	Closure (ft)	Closure Azimuth (°)
	8054.00	0.38	85.50	8028.84	-344.61	347.25	419.51	0.35	382342.23	678182.49	32.049869	-103.758234	544.58	50.38
	8146.00	0.14	71.33	8122.84	-344.67	347.31	419.93	0.26	382342.29	678182.90	32.049869	-103.758233	544.95	50.41
	8242.00	0.24	295.65	8216.84	-344.79	347.43	419.86	0.38	382342.41	678182.84	32.049870	-103.758233	544.97	50.39
	8337.00	0.86	260.38	8311.83	-344.76	347.40	418.98	0.71	382342.38	678181.95	32.049870	-103.758236	544.76	50.34
	8432.00	1.29	263.33	8406.81	-344.53	347.16	417.21	0.46	382342.14	678180.19	32.049869	-103.758241	542.76	50.24
	8526.00	0.55	257.21	8500.80	-344.32	346.93	415.72	0.79	382341.91	678178.50	32.049868	-103.758246	541.47	50.15
	8621.00	0.69	242.21	8595.80	-343.95	346.57	414.77	0.22	382341.55	678177.75	32.049867	-103.758249	540.50	50.12
	8716.00	1.01	259.97	8690.79	-343.55	346.15	413.44	0.43	382341.13	678176.42	32.049866	-103.758254	539.22	50.06
	8811.00	0.35	31.11	8785.78	-343.66	346.26	412.77	1.33	382341.24	678175.74	32.049867	-103.758256	538.77	50.01
	8906.00	0.81	7.68	8880.78	-344.57	347.17	413.01	0.54	382342.15	678175.98	32.049869	-103.758255	539.54	49.95
	9001.00	0.94	342.07	8975.77	-345.98	348.58	412.86	0.43	382343.56	678175.83	32.049873	-103.758255	540.33	49.83
	9096.00	1.09	126.09	9070.76	-346.18	348.79	413.35	2.03	382343.77	678176.32	32.049874	-103.758254	540.84	49.84
	9191.00	1.62	129.77	9165.73	-344.78	347.40	415.11	0.57	382342.38	678178.08	32.049870	-103.758248	541.29	50.07
	9285.00	1.31	139.31	9259.70	-343.10	345.73	416.83	0.42	382340.71	678179.81	32.049865	-103.758243	541.55	50.33
	9381.00	1.25	170.34	9355.68	-341.23	343.87	417.72	0.72	382338.85	678180.70	32.049860	-103.758240	541.05	50.54
	9475.00	1.20	153.32	9449.66	-339.34	341.98	418.33	0.39	382336.96	678181.31	32.049855	-103.758238	540.33	50.74
	9570.00	0.95	140.79	9544.64	-337.84	340.48	419.28	0.36	382335.46	678182.26	32.049851	-103.758235	540.11	50.92
	9665.00	1.02	118.49	9639.63	-336.81	339.46	420.52	0.41	382334.44	678183.50	32.049848	-103.758231	540.44	51.09
	9760.00	0.98	87.99	9734.61	-336.43	339.09	422.08	0.56	382334.07	678185.05	32.049845	-103.758228	541.41	51.22
	9855.00	0.84	97.11	9829.60	-336.36	339.03	423.58	0.21	382334.01	678186.55	32.049847	-103.758221	542.55	51.33
	9948.00	0.93	107.37	9922.59	-336.04	338.72	424.98	0.20	382333.70	678187.95	32.049846	-103.758217	543.45	51.44
	10043.00	1.23	111.15	10017.57	-335.44	338.12	426.66	0.32	382333.10	678189.64	32.049844	-103.758211	544.40	51.60
	10138.00	0.99	126.52	10112.56	-334.57	337.27	428.27	0.40	382332.25	678191.25	32.049842	-103.758208	545.13	51.78
	10233.00	1.21	148.30	10207.54	-333.22	335.93	429.46	0.49	382330.91	678192.43	32.049838	-103.758202	545.23	51.97
	10328.00	2.20	177.45	10302.50	-330.54	333.25	430.07	1.35	382328.23	678193.04	32.049831	-103.758200	544.07	52.23
	10423.00	2.43	191.45	10397.42	-326.75	329.45	429.75	0.64	382324.44	678192.72	32.049822	-103.758201	541.50	52.53
	10518.00	0.76	190.88	10492.38	-324.16	326.86	429.23	1.76	382321.84	678192.21	32.049813	-103.758203	539.52	52.71
	10613.00	0.74	172.35	10587.37	-322.93	325.63	429.19	0.26	382320.62	678192.17	32.049810	-103.758203	538.74	52.81
	10707.00	1.04	186.86	10681.36	-321.48	324.19	429.17	0.40	382319.17	678192.15	32.049806	-103.758203	537.85	52.93
	10802.00	1.22	190.58	10776.34	-319.64	322.34	428.88	0.20	382317.32	678191.86	32.049801	-103.758204	536.51	53.07
	10896.00	0.28	147.99	10870.33	-318.46	321.16	428.82	1.10	382316.14	678191.80	32.049797	-103.758204	535.75	53.17
	10991.00	0.44	93.42	10965.33	-318.24	320.94	429.31	0.38	382315.92	678192.28	32.049797	-103.758203	536.01	53.22
	11097.00	0.86	189.17	11071.33	-317.42	320.13	429.59	0.95	382315.11	678192.56	32.049795	-103.758202	535.75	53.31
	11192.00	6.81	184.64	11166.07	-311.10	313.83	429.02	6.27	382308.79	678191.99	32.049777	-103.758204	531.54	53.82
HL Crossing	11247.00	14.36	180.50	11220.10	-301.02	303.72	428.69	13.79	382298.70	678191.67	32.049747	-103.758205	525.38	54.78
	11287.00	19.87	179.45	11258.31	-289.25	291.93	428.72	13.79	382286.94	678191.69	32.049717	-103.758205	518.68	55.65
	11382.00	30.34	178.95	11344.22	-249.00	251.71	429.31	11.02	382246.69	678192.29	32.049606	-103.758204	497.66	59.62
	11477.00	37.18	180.85	11423.15	-196.25	198.95	429.33	7.28	382193.94	678192.30	32.049461	-103.758205	473.18	65.14
	11572.00	38.84	179.42	11498.00	-137.76	140.46	429.20	1.98	382135.45	678192.18	32.049301	-103.758206	451.60	71.88
	11667.00	50.13	177.63	11565.67	-71.32	74.03	431.02	11.96	382069.02	678193.99	32.049118	-103.758202	437.33	80.25
	11761.00	58.27	178.22	11620.61	4.83	-2.10	433.75	8.67	381992.80	678196.73	32.048909	-103.758194	433.76	90.28
Last 3rd Party Survey	11856.00	66.74	180.30	11664.43	89.01	-86.28	434.78	9.12	381908.72	678197.76	32.048677	-103.758192	443.26	101.22
	11945.00	73.75	182.64	11694.50	172.67	-169.96	432.80	8.26	381825.05	678195.57	32.048447	-103.758201	464.79	111.45
	11977.00	74.08	182.92	11703.37	203.37	-200.67	431.11	1.33	381794.35	678194.08	32.048363	-103.758206	475.52	114.96
	12009.00	74.46	183.24	11712.04	234.12	-231.42	429.45	1.53	381763.59	678192.43	32.048278	-103.758212	487.84	118.32
	12072.00	76.13	184.09	11728.03	294.90	-292.23	425.56	2.95	381702.78	678188.53	32.048111	-103.758226	516.23	124.48
	12104.00	76.66	184.37	11735.56	325.90	-323.25	423.26	1.86	381671.77	678186.24	32.048026	-103.758233	532.58	127.37
	12167.00	77.76	184.99	11749.51	387.10	-384.48	418.25	1.99	381610.54	678181.22	32.047858	-103.758251	568.12	132.59
	12199.00	77.74	185.12	11756.30	418.23	-415.63	415.49	0.40	381579.39	678178.47	32.047772	-103.758260	587.69	135.01
	12248.00	78.45	185.37	11766.41	465.95	-463.37	411.11	1.53	381531.65	678174.09	32.047641	-103.758275	619.46	138.42
	12294.00	78.62	185.18	11775.55	510.81	-508.27	406.96	0.55	381486.76	678169.94	32.047518	-103.758289	651.12	141.32
	12389.00	80.27	185.24	11792.95	603.76	-601.27	398.48	1.74	381393.76	678161.46	32.047282	-103.758318	721.33	146.47
	12484.00	86.07	184.53	11804.24	697.65	-695.21	390.46	6.15	381299.83	678153.44	32.047004	-103.758346	797.36	150.68
	12579.00	87.46	182.47	11809.61	792.28	-789.88	384.67	2.61	381205.17	678147.65	32.046744	-103.758366	878.56	154.03
	12674.00	89.04	181.79	11812.51	887.14	-884.76	381.14	1.81	381110.29	678144.12	32.046483	-103.758379	963.37	156.69
	12769.00	89.62	182.84	11813.62	982.03	-979.69	377.30	1.26	381015.38	678140.28	32.046222	-103.758393	1049.82	158.94
	12864.00	90.45	180.14	11813.56	1076.97	-1074.64	374.83	2.97	380920.43	678137.81	32.045961	-103.758403	1138.13	160.77
	12959.00	89.20	176.68	11813.85	1171.93	-1169.58	377.47	3.87	380825.48	678140.45	32.045700	-103.758396	1228.99	162.11
	13055.00	89.81	176.64	11814.68	1267.80	-1265.42	383.06	0.64	380729.66	678146.04	32.045437	-103.758379	1322.12	163.16
	13150.00	89.55	176.94	11815.21	1362.68	-1360.26	388.38	0.42	380634.81	678151.36	32.045176	-103.758364	1414.62	164.06
	13245.00	90.02	177.72	11815.57	1457.60	-1455.16	392.81	0.96	380539.92	678155.78	32.044915	-103.758351	1507.24	164.89
	13340.00	89.60	176.96	11815.88	1552.52	-1550.06	397.22	0.91	380445.03	678160.19	32.044654	-103.758339	1600.14	165.63
	13436.00	90.14	177.39	11816.10	1648.43	-1645.94	401.95	0.72	380349.15	678164.92	32.044391	-103.758325	1694.31	166.28
	13531.00	89.85	177.13	11816.11	1743.35	-1740.83	406.49	0.41	380254.27	678169.47	32.044130	-103.758312	1787.66	166.86
	13626.00	89.38	176.31	11816.75	1838.22	-1835.67	411.92	0.99	380159.43	678174.90	32.043869	-103.758296	1881.32	167.35
	13721.00	89.41	177.22	11817.75	1933.10	-1930.51	417.28	0.96	380064.60	678180.26	32.043608	-103.758280	1975.10	167.80
	13816.00	89.88	176.85	11818.34	2028.00	-2025.38	422.20	0.63	379969.73	678185.17	32.043347	-103.758266	2068.92	168.23
	13912.00	89.28	177.39	11819.04	2123.90	-2121.26	427.02	0.84	379873.86	678190.00	32.043084	-103.758252	2163.81	168.62
	14007.00	89.41	176.83	11820.13	2218.80	-2216.13	431.81	0.61	379778.99	678194.79	32.042823	-103.758238	2257.81	168.97
	14102.00	89.42	177.33	11821.10	231									



Boros Federal No. 218H

Eddy County, NM

May 06, 2020

Job No. LNM5564319

Certified Report

May 06, 2020



Operator Name: Matador Resources
Well Name: Boros Federal No. 218H
County/Parish: Eddy County,
State: NM
Rig Name: Patterson 256
Job Number: LNM5564319

This is to certify the surveys performed on the referenced well by Professional Directional Ent., Inc. are true and correct MWD Surveys, data provided as follows:

<u>Surveyor</u>	<u>Surveyed Depths</u>	<u>Projection to Bit</u>	<u>Dates Performed</u>	<u>Type of Survey</u>
ProDirectional	15,713' MD – 21,758' MD	21,819' MD	04/14/20 – 04/23/20	MWD

Sincerely,



Mike Coats
Regulatory Specialist
Professional Directional

850 Conroe Park West Drive | Conroe, TX 77303 | Phone: 936.441.7266
prodirectional.com



Matador Resources

**Eddy County, NM
Boros Federal
No. 218H
OH**

Survey: ProDirectional

Survey Report

06 May, 2020





ProDirectional Survey Report



Company: Project: Site: Well: Wellbore: Design:	Matador Resources Eddy County, NM (NAD83) Boros Federal No. 218H OH MWD-148'-21758', PTB: 21819'	Local Co-ordinate Reference: TVD Reference: MD Reference: North Reference: Survey Calculation Method: Database:	Well No. 218H Well @ 3245.50usft Well @ 3245.50usft Grid Minimum Curvature WellPlanner1
Project	Eddy County, NM (NAD83)		
Map System: Geo Datum: Map Zone:	US State Plane 1983 North American Datum 1983 New Mexico Eastern Zone	System Datum:	Mean Sea Level
Site	Boros Federal		
Site Position: From: Position Uncertainty:	Map 0.00 usft	Northing: Easting: Slot Radius:	382,041.00 usft 717,336.00 usft 13-3/16 " Latitude: Longitude: Grid Convergence:
			32.049038 -103.765276 0.30 °
Well	No. 218H		
Well Position +N/-S +E/-W	0.00 usft 0.00 usft 0.00 usft	Northing: Easting: Wellhead Elevation:	382,052.00 usft 718,949.00 usft usft
			Latitude: Longitude: Ground Level:
			32.049045 -103.760070 3,217.00 usft
Wellbore	OH		
Magnetics	Model Name Sample Date	Declination (°)	Dip Angle (°)
	HDGM 4/13/2020	6.57	59.63
			Field Strength (nT)
			47,648.10
Design	MWD-148'-21758', PTB: 21819'		
Audit Notes: Version:	1.0	Phase: ACTUAL	Tie On Depth: 0.00
Vertical Section:	Depth From (TVD) (usft)	+N/-S (usft)	+E/-W (usft)
	0.00	0.00	0.00
			Direction (°)
			179.64



ProDirectional Survey Report



Company:	Matador Resources	Local Co-ordinate Reference:	Well No. 218H
Project:	Eddy County, NM (NAD83)	TVD Reference:	Well @ 3245.50usft
Site:	Boros Federal	MD Reference:	Well @ 3245.50usft
Well:	No. 218H	North Reference:	Grid
Wellbore:	OH	Survey Calculation Method:	Minimum Curvature
Design:	MWD-148'-21758', PTB: 21819'	Database:	WellPlanner1

Survey Program		Date	5/6/2020
From (usft)	To (usft)	Survey (Wellbore)	Description
148.00	11,856.00	Survey #1 (OH)	OWSG MWD + HRGM
11,945.00	15,624.00	Survey #2 (OH)	OWSG MWD + HRGM
15,713.00	21,819.00	Survey #3 (OH)	OWSG MWD + HRGM

Survey	MD (usft)	Inc (°)	Azi (azimuth) (°)	TVD (usft)	V. Sec (usft)	N/S (usft)	E/W (usft)	Closure Distance (usft)	Closure Azimuth (°)	Northing (usft)	Easting (usft)
	0.00	0.00	0.00	0.00	0.00	0.00	0.00	0.00	0.00	382,052.00	718,949.00
	148.00	0.40	63.03	148.00	-0.23	0.23	0.46	0.52	63.03	382,052.23	718,949.46
	242.00	0.52	66.57	242.00	-0.55	0.55	1.14	1.27	64.22	382,052.55	718,950.14
	335.00	0.64	67.68	334.99	-0.91	0.92	2.01	2.21	65.48	382,052.92	718,951.01
	427.00	0.78	79.48	426.98	-1.21	1.23	3.10	3.34	68.42	382,053.23	718,952.10
	519.00	0.66	80.60	518.98	-1.40	1.43	4.24	4.48	71.39	382,053.43	718,953.24
	609.00	0.52	80.95	608.97	-1.54	1.58	5.16	5.39	72.99	382,053.58	718,954.16
	702.00	0.79	90.13	701.97	-1.60	1.64	6.21	6.43	75.20	382,053.64	718,955.21
	883.00	0.57	92.29	882.95	-1.55	1.60	8.36	8.51	79.15	382,053.60	718,957.36
	974.00	0.52	82.72	973.95	-1.58	1.64	9.22	9.37	79.93	382,053.64	718,958.22
	1,066.00	0.14	45.52	1,065.95	-1.71	1.77	9.72	9.88	79.68	382,053.77	718,958.72
	1,161.00	0.13	347.52	1,160.95	-1.89	1.96	9.78	9.97	78.69	382,053.96	718,958.78
	1,256.00	0.25	331.94	1,255.95	-2.18	2.24	9.66	9.91	76.92	382,054.24	718,958.66
	1,351.00	0.30	22.00	1,350.95	-2.60	2.66	9.65	10.01	74.61	382,054.66	718,958.65
	1,435.00	0.36	3.18	1,434.94	-3.06	3.12	9.75	10.24	72.23	382,055.12	718,958.75
	1,511.00	0.45	351.25	1,510.94	-3.60	3.66	9.72	10.38	69.37	382,055.66	718,958.72
	1,606.00	0.81	353.62	1,605.94	-4.63	4.69	9.59	10.67	63.91	382,056.69	718,958.59
	1,702.00	1.20	354.22	1,701.92	-6.31	6.37	9.41	11.36	55.91	382,058.37	718,958.41
	1,797.00	1.67	49.58	1,796.90	-8.19	8.26	10.36	13.25	51.46	382,060.26	718,959.36
	1,892.00	1.74	52.92	1,891.85	-9.94	10.02	12.57	16.07	51.43	382,062.02	718,961.57



ProDirectional Survey Report



Company: Matador Resources		Local Co-ordinate Reference:								
Project: Eddy County, NM (NAD83)		Well No. 218H								
Site: Boros Federal		Well @ 3245.50usft								
Well: No. 218H		Well @ 3245.50usft								
Wellbore: OH		Grid								
Design: MWD-148'-21758', PTB: 21819'		Minimum Curvature								
		WellPlanner1								
Survey										
MD (usft)	Inc (°)	Azi (azimuth) (°)	TVD (usft)	V. Sec (usft)	N/S (usft)	E/W (usft)	Closure Distance (usft)	Closure Azimuth (°)	Northing (usft)	Easting (usft)
1,987.00	1.80	49.56	1,986.81	-11.77	11.86	14.85	19.01	51.39	382,063.86	718,963.85
2,080.00	1.87	50.00	2,079.76	-13.68	13.78	17.13	21.98	51.17	382,065.78	718,966.13
2,174.00	2.85	53.83	2,173.68	-16.02	16.15	20.19	25.85	51.34	382,068.15	718,969.19
2,269.00	4.78	55.69	2,268.46	-19.61	19.77	25.37	32.16	52.06	382,071.77	718,974.37
2,364.00	5.17	58.39	2,363.11	-24.04	24.25	32.28	40.37	53.09	382,076.25	718,981.28
2,459.00	5.26	59.37	2,457.71	-28.46	28.71	39.67	48.97	54.11	382,080.71	718,988.67
2,553.00	5.15	63.49	2,551.33	-32.49	32.79	47.16	57.43	55.19	382,084.79	718,996.16
2,648.00	5.09	61.57	2,645.95	-36.35	36.70	54.68	65.85	56.13	382,088.70	719,003.68
2,743.00	4.69	61.09	2,740.60	-40.19	40.58	61.78	73.92	56.70	382,092.58	719,010.78
2,837.00	4.42	64.78	2,834.30	-43.55	43.98	68.42	81.34	57.27	382,095.98	719,017.42
2,932.00	4.79	56.99	2,929.00	-47.23	47.70	75.06	88.94	57.56	382,099.70	719,024.06
3,027.00	5.66	51.98	3,023.60	-52.23	52.75	82.08	97.57	57.27	382,104.75	719,031.08
3,122.00	5.57	54.31	3,118.15	-57.76	58.33	89.51	106.84	56.91	382,110.33	719,038.51
3,216.00	5.30	53.58	3,211.72	-62.96	63.56	96.71	115.73	56.68	382,115.56	719,045.71
3,311.00	6.04	51.98	3,306.26	-68.59	69.25	104.18	125.10	56.39	382,121.25	719,053.18
3,406.00	6.36	52.73	3,400.70	-74.81	75.51	112.31	135.33	56.08	382,127.51	719,061.31
3,500.00	6.17	59.31	3,494.14	-80.48	81.24	120.79	145.57	56.08	382,133.24	719,069.79
3,595.00	5.86	65.64	3,588.62	-85.03	85.85	129.60	155.46	56.48	382,137.85	719,078.60
3,690.00	5.96	58.42	3,683.12	-89.56	90.43	138.22	165.18	56.80	382,142.43	719,087.22
3,785.00	6.14	63.88	3,777.59	-94.33	95.25	146.98	175.15	57.05	382,147.25	719,095.98
3,880.00	5.54	73.79	3,872.10	-97.79	98.77	155.95	184.60	57.65	382,150.77	719,104.95
3,975.00	5.55	63.80	3,966.66	-101.04	102.08	164.47	193.58	58.17	382,154.08	719,113.47
4,070.00	6.44	48.71	4,061.14	-106.54	107.62	172.60	203.41	58.05	382,159.62	719,121.60
4,127.00	6.57	43.26	4,117.78	-110.99	112.11	177.24	209.72	57.69	382,164.11	719,126.24
4,261.00	6.29	43.83	4,250.93	-121.80	122.99	187.57	224.30	56.75	382,174.99	719,136.57
4,356.00	6.19	43.37	4,345.37	-129.24	130.46	194.70	234.36	56.17	382,182.46	719,143.70
4,450.00	6.05	42.81	4,438.83	-136.51	137.78	201.54	244.14	55.64	382,189.78	719,150.54



ProDirectional Survey Report



Company: Project: Site: Well: Wellbore: Design:	Matador Resources Eddy County, NM (NAD83) Boros Federal No. 218H OH MWD-148'-21758', PTB: 21819'			Local Co-ordinate Reference: TVD Reference: MD Reference: North Reference: Survey Calculation Method: Database:					Well No. 218H Well @ 3245.50usft Well @ 3245.50usft Grid Minimum Curvature WellPlanner1		
	Survey										
	MD (usft)	Inc (°)	Azi (azimuth) (°)	TVD (usft)	V. Sec (usft)	N/S (usft)	E/W (usft)	Closure Distance (usft)	Closure Azimuth (°)	Northing (usft)	Easting (usft)
	4,546.00	6.31	43.48	4,534.28	-144.01	145.32	208.61	254.24	55.14	382,197.32	719,157.61
	4,640.00	6.16	43.40	4,627.72	-151.37	152.73	215.63	264.24	54.69	382,204.73	719,164.63
	4,736.00	6.05	42.74	4,723.17	-158.79	160.19	222.60	274.25	54.26	382,212.19	719,171.60
4,830.00	6.29	43.92	4,816.63	-166.09	167.54	229.54	284.18	53.87	382,219.54	719,178.54	
4,925.00	6.43	44.22	4,911.05	-173.61	175.10	236.86	294.55	53.53	382,227.10	719,185.86	
5,020.00	6.19	43.36	5,005.47	-181.10	182.63	244.08	304.85	53.19	382,234.63	719,193.08	
5,114.00	5.93	44.64	5,098.94	-188.19	189.77	250.97	314.65	52.91	382,241.77	719,199.97	
5,210.00	6.01	44.36	5,194.42	-195.27	196.90	257.97	324.53	52.65	382,248.90	719,206.97	
5,305.00	5.98	43.72	5,288.90	-202.36	204.03	264.87	334.34	52.39	382,256.03	719,213.87	
5,399.00	6.30	42.00	5,382.37	-209.69	211.40	271.70	344.26	52.12	382,263.40	719,220.70	
5,495.00	6.54	43.24	5,477.76	-217.54	219.30	278.97	354.85	51.83	382,271.30	719,227.97	
5,589.00	6.54	45.24	5,571.15	-225.16	226.97	286.44	365.46	51.61	382,278.97	719,235.44	
5,685.00	6.37	45.87	5,666.54	-232.67	234.52	294.15	376.20	51.43	382,286.52	719,243.15	
5,780.00	6.31	45.61	5,760.96	-239.95	241.85	301.66	386.64	51.28	382,293.85	719,250.66	
5,874.00	6.19	46.79	5,854.40	-246.98	248.93	309.04	396.83	51.15	382,300.93	719,258.04	
5,970.00	6.40	49.42	5,949.82	-253.96	255.95	316.88	407.34	51.07	382,307.95	719,265.88	
6,065.00	6.22	48.81	6,044.25	-260.74	262.79	324.77	417.77	51.02	382,314.79	719,273.77	
6,160.00	4.04	51.81	6,138.86	-266.16	268.25	331.28	426.26	51.00	382,320.25	719,280.28	
6,255.00	4.15	53.62	6,233.62	-270.23	272.35	336.68	433.04	51.03	382,324.35	719,285.68	
6,350.00	4.19	55.08	6,328.37	-274.22	276.38	342.29	439.94	51.08	382,328.38	719,291.29	
6,445.00	3.91	54.51	6,423.13	-278.06	280.25	347.77	446.64	51.14	382,332.25	719,296.77	
6,540.00	3.86	54.65	6,517.91	-281.75	283.98	353.02	453.06	51.19	382,335.98	719,302.02	
6,635.00	3.91	53.69	6,612.70	-285.49	287.74	358.24	459.49	51.23	382,339.74	719,307.24	
6,729.00	3.95	53.56	6,706.47	-289.28	291.57	363.42	465.93	51.26	382,343.57	719,312.42	
6,825.00	3.97	54.31	6,802.24	-293.15	295.47	368.78	472.55	51.30	382,347.47	719,317.78	
6,920.00	3.56	54.82	6,897.04	-296.73	299.09	373.86	478.78	51.34	382,351.09	719,322.86	
7,015.00	3.37	54.67	6,991.87	-300.02	302.40	378.55	484.51	51.38	382,354.40	719,327.55	



ProDirectional Survey Report



Company: Project: Site: Well: Wellbore: Design:				Matador Resources Eddy County, NM (NAD83) Boros Federal No. 218H OH MWD-148'-21758', PTB: 21819'				Local Co-ordinate Reference: TVD Reference: MD Reference: North Reference: Survey Calculation Method: Database:				Well No. 218H Well @ 3245.50usft Well @ 3245.50usft Grid Minimum Curvature WellPlanner1			
MD (usft)	Inc (°)	Azi (azimuth) (°)	TVD (usft)	V. Sec (usft)	N/S (usft)	E/W (usft)	Closure Distance (usft)	Closure Azimuth (°)	Northing (usft)	Easting (usft)					
7,107.00	3.46	56.21	7,083.70	-303.10	305.51	383.07	489.97	51.43	382,357.51	719,332.07					
7,201.00	3.46	58.95	7,177.53	-306.11	308.55	387.85	495.61	51.50	382,360.55	719,336.85					
7,297.00	4.02	35.41	7,273.33	-310.31	312.79	392.29	501.72	51.43	382,364.79	719,341.29					
7,392.00	4.55	34.75	7,368.07	-316.10	318.60	396.36	508.53	51.21	382,370.60	719,345.36					
7,486.00	4.41	34.56	7,461.78	-322.11	324.64	400.54	515.58	50.98	382,376.64	719,349.54					
7,581.00	4.12	36.94	7,556.52	-327.82	330.37	404.66	522.39	50.77	382,382.37	719,353.66					
7,676.00	3.87	37.45	7,651.29	-333.07	335.64	408.66	528.83	50.60	382,387.64	719,357.66					
7,770.00	3.65	39.16	7,745.08	-337.88	340.48	412.48	534.85	50.46	382,392.48	719,361.48					
7,865.00	3.34	42.48	7,839.91	-342.25	344.87	416.26	540.56	50.36	382,396.87	719,365.26					
7,959.00	0.69	72.73	7,933.84	-344.42	347.06	418.65	543.80	50.34	382,399.06	719,367.65					
8,054.00	0.38	85.50	8,028.84	-344.61	347.25	419.51	544.58	50.38	382,399.25	719,368.51					
8,148.00	0.14	71.33	8,122.84	-344.67	347.31	419.93	544.95	50.41	382,399.31	719,368.93					
8,242.00	0.24	295.65	8,216.84	-344.79	347.43	419.86	544.97	50.39	382,399.43	719,368.86					
8,337.00	0.86	260.38	8,311.83	-344.76	347.40	418.98	544.27	50.34	382,399.40	719,367.98					
8,432.00	1.29	263.33	8,406.81	-344.53	347.16	417.21	542.76	50.24	382,399.16	719,366.21					
8,526.00	0.55	257.21	8,500.80	-344.32	346.93	415.72	541.47	50.15	382,398.93	719,364.72					
8,621.00	0.69	242.21	8,595.80	-343.95	346.57	414.77	540.50	50.12	382,398.57	719,363.77					
8,716.00	1.01	259.97	8,690.79	-343.55	346.15	413.44	539.22	50.06	382,398.15	719,362.44					
8,811.00	0.35	31.11	8,785.78	-343.66	346.26	412.77	538.77	50.01	382,398.26	719,361.77					
8,906.00	0.81	7.68	8,880.78	-344.57	347.17	413.01	539.54	49.95	382,399.17	719,362.01					
9,001.00	0.94	342.07	8,975.77	-345.98	348.58	412.86	540.33	49.83	382,400.58	719,361.86					
9,096.00	1.09	126.09	9,070.76	-346.18	348.79	413.35	540.84	49.84	382,400.79	719,362.35					
9,191.00	1.62	129.77	9,165.73	-344.78	347.40	415.11	541.29	50.07	382,399.40	719,364.11					
9,285.00	1.31	139.31	9,259.70	-343.10	345.73	416.83	541.55	50.33	382,397.73	719,365.83					
9,381.00	1.25	170.34	9,355.68	-341.23	343.87	417.72	541.05	50.54	382,395.87	719,366.72					
9,475.00	1.20	153.32	9,449.66	-339.34	341.98	418.33	540.33	50.74	382,393.98	719,367.33					
9,570.00	0.95	140.79	9,544.64	-337.84	340.48	419.28	540.11	50.92	382,392.48	719,368.28					



ProDirectional Survey Report



Company: Matador Resources
Project: Eddy County, NM (NAD83)
Site: Boros Federal
Well: No. 218H
Wellbore: OH
Design: MWD-148'-21758', PTB: 21819'

Local Co-ordinate Reference:
TVD Reference: Well @ 3245.50usft
MD Reference: Well @ 3245.50usft
North Reference: Grid
Survey Calculation Method: Minimum Curvature
Database: WellPlanner1

Survey

MD (usft)	Inc (°)	Azi (azimuth) (°)	TVD (usft)	V. Sec (usft)	N/S (usft)	E/W (usft)	Closure Distance (usft)	Closure Azimuth (°)	Northing (usft)	Easting (usft)
9,665.00	1.02	118.49	9,639.63	-336.81	339.46	420.52	540.44	51.09	382,391.46	719,369.52
9,760.00	0.98	87.99	9,734.61	-336.43	339.09	422.08	541.41	51.22	382,391.09	719,371.08
9,855.00	0.84	97.11	9,829.60	-336.36	339.03	423.58	542.55	51.33	382,391.03	719,372.58
9,948.00	0.93	107.37	9,922.59	-336.04	338.72	424.98	543.45	51.44	382,390.72	719,373.98
10,043.00	1.23	111.15	10,017.57	-335.44	338.12	426.66	544.40	51.60	382,390.12	719,375.66
10,138.00	0.99	126.52	10,112.56	-334.57	337.27	428.27	545.13	51.78	382,389.27	719,377.27
10,233.00	1.21	148.30	10,207.54	-333.22	335.93	429.46	545.23	51.97	382,387.93	719,378.46
10,328.00	2.20	177.45	10,302.50	-330.54	333.25	430.07	544.07	52.23	382,385.25	719,379.07
10,423.00	2.43	191.45	10,397.42	-326.75	329.45	429.75	541.50	52.53	382,381.45	719,378.75
10,518.00	0.76	190.88	10,492.38	-324.16	326.86	429.23	539.52	52.71	382,378.86	719,378.23
10,613.00	0.74	172.35	10,587.37	-322.93	325.63	429.19	538.74	52.81	382,377.63	719,378.19
10,707.00	1.04	186.86	10,681.36	-321.48	324.19	429.17	537.85	52.93	382,376.19	719,378.17
10,802.00	1.22	190.58	10,776.34	-319.64	322.34	428.88	536.51	53.07	382,374.34	719,377.88
10,896.00	0.28	147.99	10,870.33	-318.46	321.16	428.82	535.75	53.17	382,373.16	719,377.82
10,991.00	0.44	93.42	10,965.33	-318.24	320.94	429.31	536.01	53.22	382,372.94	719,378.31
11,097.00	0.86	189.17	11,071.33	-317.42	320.13	429.59	535.75	53.31	382,372.13	719,378.59
11,192.00	6.81	184.64	11,166.07	-311.10	313.81	429.02	531.54	53.82	382,365.81	719,378.02
11,250.70	14.87	180.37	11,223.68	-300.09	302.79	428.69	524.84	54.77	382,354.79	719,377.69
FTP: 11250.7' MD										
11,287.00	19.87	179.45	11,258.31	-289.25	291.95	428.72	518.69	55.75	382,343.95	719,377.72
11,382.00	30.34	178.95	11,344.22	-249.01	251.71	429.31	497.66	59.62	382,303.71	719,378.31
11,477.00	37.18	180.85	11,423.15	-196.25	198.95	429.33	473.18	65.14	382,250.95	719,378.33
11,572.00	38.84	179.42	11,498.00	-137.76	140.46	429.20	451.60	71.88	382,192.46	719,378.20
11,667.00	50.13	177.63	11,565.67	-71.32	74.03	431.02	437.33	80.25	382,126.03	719,380.02
11,761.00	58.27	178.22	11,620.61	4.83	-2.10	433.76	433.76	90.28	382,049.90	719,382.76
11,856.00	66.74	180.30	11,664.43	89.01	-86.28	434.78	443.26	101.22	381,965.72	719,383.78
Final Gordon Survey: 11856' MD										

Company: Matador Resources
Project: Eddy County, NM (NAD83)
Site: Boros Federal
Well: No. 218H
Wellbore: OH
Design: MWD-148'-21758', PTB: 21819'

Local Co-ordinate Reference:
TVD Reference: Well @ 3245.50usft
MD Reference: Well @ 3245.50usft
North Reference: Grid
Survey Calculation Method: Minimum Curvature
Database: WellPlanner1

Well No. 218H
Well @ 3245.50usft
Well @ 3245.50usft
Grid
Minimum Curvature
WellPlanner1

Survey

MD (usft)	Inc (°)	Azi (azimuth) (°)	TVD (usft)	V. Sec (usft)	N/S (usft)	E/W (usft)	Closure Distance (usft)	Closure Azimuth (°)	Northing (usft)	Easting (usft)
11,945.00	73.75	182.64	11,694.50	172.67	-169.95	432.60	464.79	111.45	381,882.05	719,381.60
First SLB Survey: 11945' MD										
11,977.00	74.08	182.92	11,703.37	203.37	-200.67	431.11	475.52	114.96	381,851.33	719,380.11
12,009.00	74.46	183.24	11,712.04	234.12	-231.42	429.45	487.84	118.32	381,820.58	719,378.45
12,072.00	76.13	184.09	11,728.03	294.90	-292.23	425.56	516.23	124.48	381,759.77	719,374.56
12,104.00	76.66	184.37	11,735.56	325.90	-323.25	423.26	532.58	127.37	381,728.75	719,372.26
12,167.00	77.76	184.99	11,749.51	387.10	-384.48	418.25	568.12	132.59	381,667.52	719,367.25
12,199.00	77.74	185.12	11,756.30	418.23	-415.63	415.49	587.69	135.01	381,636.37	719,364.49
12,248.00	78.45	185.37	11,766.41	465.95	-463.37	411.11	619.46	138.42	381,588.63	719,360.11
12,294.00	78.62	185.18	11,775.55	510.81	-508.27	406.97	651.12	141.32	381,543.73	719,355.97
12,389.00	80.27	185.24	11,792.95	603.76	-601.27	398.48	721.33	146.47	381,450.73	719,347.48
12,484.00	86.07	184.53	11,804.24	697.65	-695.21	390.46	797.36	150.68	381,356.79	719,339.46
12,579.00	87.46	182.47	11,809.61	792.28	-789.88	384.67	878.56	154.03	381,262.12	719,333.67
12,674.00	89.04	181.79	11,812.51	887.14	-884.76	381.14	963.37	156.69	381,167.24	719,330.14
12,769.00	89.62	182.84	11,813.62	982.03	-979.68	377.30	1,049.82	158.94	381,072.32	719,326.30
12,864.00	90.45	180.14	11,813.56	1,076.97	-1,074.63	374.83	1,138.13	160.77	380,977.37	719,323.83
12,959.00	89.20	176.68	11,813.85	1,171.93	-1,169.58	377.47	1,228.99	162.11	380,882.42	719,326.47
13,055.00	89.81	176.64	11,814.68	1,267.80	-1,265.41	383.06	1,322.12	163.16	380,786.59	719,332.06
13,150.00	89.55	176.94	11,815.21	1,362.68	-1,360.26	388.38	1,414.62	164.06	380,691.74	719,337.38
13,245.00	90.02	177.72	11,815.57	1,457.60	-1,455.16	392.81	1,507.24	164.89	380,596.84	719,341.81
13,340.00	89.60	176.96	11,815.88	1,552.52	-1,550.05	397.22	1,600.14	165.63	380,501.95	719,346.22
13,436.00	90.14	177.39	11,816.10	1,648.43	-1,645.94	401.95	1,694.31	166.28	380,406.06	719,350.95
13,531.00	89.85	177.13	11,816.11	1,743.35	-1,740.83	406.49	1,787.66	166.86	380,311.17	719,355.49
13,626.00	89.38	176.31	11,816.75	1,838.22	-1,835.67	411.92	1,881.32	167.35	380,216.33	719,360.92
13,721.00	89.41	177.22	11,817.75	1,933.10	-1,930.51	417.28	1,975.10	167.80	380,121.49	719,366.28
13,816.00	89.88	176.85	11,818.34	2,028.00	-2,025.38	422.20	2,068.92	168.23	380,026.62	719,371.20
13,912.00	89.28	177.39	11,819.04	2,123.90	-2,121.26	427.02	2,163.81	168.62	379,930.74	719,376.02

Company: Matador Resources Project: Eddy County, NM (NAD83) Site: Boros Federal Well: No. 218H Wellbore: OH Design: MWD-148'-21758', PTB: 21819'				Local Co-ordinate Reference: Well No. 218H TVD Reference: Well @ 3245.50usft MD Reference: Well @ 3245.50usft North Reference: Grid Survey Calculation Method: Minimum Curvature Database: WellPlanner1						
MD (usft)	Inc (°)	Azi (azimuth) (°)	TVD (usft)	V. Sec (usft)	N/S (usft)	E/W (usft)	Closure Distance (usft)	Closure Azimuth (°)	Northing (usft)	Easting (usft)
14,007.00	89.41	176.83	11,820.13	2,218.80	-2,216.13	431.81	2,257.81	168.97	379,835.87	719,380.81
14,102.00	89.42	177.33	11,821.10	2,313.70	-2,311.00	436.65	2,351.89	169.30	379,741.00	719,385.65
14,197.00	89.18	177.48	11,822.26	2,408.62	-2,405.90	440.95	2,445.97	169.61	379,646.10	719,389.95
14,292.00	89.20	177.88	11,823.60	2,503.56	-2,500.81	444.80	2,540.06	169.91	379,551.19	719,393.80
14,388.00	89.25	177.22	11,824.90	2,599.48	-2,596.71	448.90	2,635.23	170.19	379,455.29	719,397.90
14,483.00	89.46	179.41	11,825.97	2,694.44	-2,691.66	451.69	2,729.30	170.47	379,360.34	719,400.69
14,578.00	89.53	180.88	11,826.81	2,789.43	-2,786.65	451.45	2,822.99	170.80	379,265.35	719,400.45
14,673.00	89.74	181.09	11,827.41	2,884.41	-2,881.64	449.82	2,916.53	171.13	379,170.36	719,398.82
14,768.00	90.52	181.60	11,827.20	2,979.36	-2,976.61	447.59	3,010.07	171.45	379,075.39	719,396.59
14,863.00	91.30	182.62	11,825.69	3,074.26	-3,071.53	444.09	3,103.47	171.77	378,980.47	719,393.09
14,958.00	91.20	182.84	11,823.61	3,169.10	-3,166.40	439.57	3,196.77	172.10	378,885.60	719,388.57
15,054.00	91.53	182.94	11,821.33	3,264.92	-3,262.25	434.73	3,291.09	172.41	378,789.75	719,383.73
15,149.00	91.66	184.06	11,818.68	3,359.66	-3,357.04	428.93	3,384.33	172.72	378,694.96	719,377.93
15,244.00	90.92	181.77	11,816.54	3,454.48	-3,451.88	424.10	3,477.84	173.00	378,600.12	719,373.10
15,339.00	90.79	180.53	11,815.13	3,549.43	-3,546.85	422.20	3,571.89	173.21	378,505.15	719,371.20
15,434.00	89.47	177.92	11,814.91	3,644.42	-3,641.83	423.48	3,666.37	173.37	378,410.17	719,372.48
15,529.00	90.17	179.63	11,815.21	3,739.40	-3,736.81	425.51	3,760.95	173.50	378,315.19	719,374.51
15,624.00	89.00	179.60	11,815.90	3,834.40	-3,831.80	426.15	3,855.42	173.65	378,220.20	719,375.15
Last SLB Survey: 15624' MD										
15,713.00	89.32	180.99	11,817.20	3,923.38	-3,920.79	425.69	3,943.83	173.80	378,131.21	719,374.69
Pro MWD First Survey: 15713' MD										
15,808.00	87.30	180.00	11,820.00	4,018.32	-4,015.73	424.87	4,038.15	173.96	378,036.27	719,373.87
15,903.00	87.16	179.40	11,824.60	4,113.21	-4,110.62	425.37	4,132.57	174.09	377,941.38	719,374.37
15,998.00	86.59	179.49	11,829.77	4,208.07	-4,205.48	426.29	4,227.03	174.21	377,846.52	719,375.29
16,093.00	87.34	178.88	11,834.80	4,302.93	-4,300.33	427.64	4,321.54	174.32	377,751.67	719,376.64
16,188.00	87.74	178.79	11,838.88	4,397.84	-4,395.22	429.57	4,416.17	174.42	377,656.78	719,378.57
16,283.00	87.96	177.73	11,842.45	4,492.74	-4,490.11	432.45	4,510.89	174.50	377,561.89	719,381.45



ProDirectional Survey Report



Company:		Matador Resources		Local Co-ordinate Reference:						
Project:	Eddy County, NM (NAD83)			TVD Reference:			Well @ 3245.50usft			
Site:	Boros Federal			MD Reference:			Well @ 3245.50usft			
Well:	No. 218H			North Reference:			Grid			
Wellbore:	OH			Survey Calculation Method:			Minimum Curvature			
Design:	MWD-148'-21758', PTB: 21819'			Database:						
Survey										
MD (usft)	Inc (°)	Azi (azimuth) (°)	TVD (usft)	V. Sec (usft)	N/S (usft)	E/W (usft)	Closure Distance (usft)	Closure Azimuth (°)	Northing (usft)	Easting (usft)
16,378.00	88.40	177.30	11,845.46	4,587.63	-4,584.97	436.57	4,605.71	174.56	377,467.03	719,385.57
16,473.00	89.05	177.30	11,847.58	4,682.52	-4,679.85	441.04	4,700.58	174.62	377,372.15	719,390.04
16,569.00	88.48	179.40	11,849.65	4,778.47	-4,775.78	443.80	4,796.35	174.69	377,276.22	719,392.80
16,663.00	89.80	179.93	11,851.06	4,872.46	-4,869.76	444.35	4,889.99	174.79	377,182.24	719,393.35
16,758.00	91.30	179.84	11,850.15	4,967.45	-4,964.76	444.54	4,984.62	174.88	377,087.24	719,393.54
16,853.00	90.90	178.88	11,848.32	5,062.43	-5,059.73	445.61	5,079.31	174.97	376,992.27	719,394.61
16,949.00	91.25	178.26	11,846.52	5,158.40	-5,155.68	448.00	5,175.11	175.03	376,896.32	719,397.00
17,044.00	90.81	178.35	11,844.81	5,253.36	-5,250.63	450.81	5,269.94	175.09	376,801.37	719,399.81
17,139.00	89.93	179.76	11,844.20	5,348.34	-5,345.61	452.38	5,364.72	175.16	376,706.39	719,401.38
17,234.00	89.80	179.49	11,844.42	5,443.34	-5,440.61	453.00	5,459.43	175.24	376,611.39	719,402.00
17,329.00	88.53	178.70	11,845.81	5,538.33	-5,535.58	454.50	5,554.21	175.31	376,516.42	719,403.50
17,424.00	88.09	178.09	11,848.61	5,633.26	-5,630.50	457.16	5,649.03	175.36	376,421.50	719,406.16
17,519.00	89.36	179.32	11,850.72	5,728.22	-5,725.45	459.30	5,743.84	175.41	376,326.55	719,408.30
17,615.00	89.54	178.70	11,851.64	5,824.21	-5,821.43	460.96	5,839.65	175.47	376,230.57	719,409.96
17,710.00	89.01	179.49	11,852.85	5,919.20	-5,916.41	462.46	5,934.46	175.53	376,135.59	719,411.46
17,805.00	88.44	179.32	11,854.96	6,014.17	-6,011.38	463.45	6,029.22	175.59	376,040.62	719,412.45
17,900.00	89.98	179.58	11,856.27	6,109.16	-6,106.36	464.36	6,124.00	175.65	375,945.64	719,413.36
17,995.00	89.71	180.28	11,856.53	6,204.16	-6,201.36	464.48	6,218.73	175.72	375,850.64	719,413.48
18,090.00	91.56	179.76	11,855.47	6,299.15	-6,296.35	464.44	6,313.46	175.78	375,755.65	719,413.44
18,185.00	91.34	179.40	11,853.07	6,394.12	-6,391.32	465.14	6,408.22	175.84	375,660.68	719,414.14
18,280.00	90.77	178.79	11,851.32	6,489.10	-6,486.29	466.64	6,503.06	175.89	375,565.71	719,415.64
18,367.00	89.49	178.00	11,851.12	6,576.07	-6,573.25	469.08	6,589.97	175.92	375,478.75	719,418.08
18,471.00	90.33	179.49	11,851.29	6,680.06	-6,677.23	471.36	6,693.84	175.96	375,374.77	719,420.36
18,566.00	90.77	179.40	11,850.38	6,775.05	-6,772.22	472.28	6,788.66	176.01	375,279.78	719,421.28
18,661.00	91.12	178.88	11,848.81	6,870.03	-6,867.19	473.70	6,883.51	176.05	375,184.81	719,422.70
18,757.00	91.47	178.00	11,846.64	6,965.99	-6,963.13	476.31	6,979.40	176.09	375,088.87	719,425.31
18,852.00	92.53	177.38	11,843.32	7,060.87	-7,057.99	480.14	7,074.31	176.11	374,994.01	719,429.14



ProDirectional Survey Report



Company: Matador Resources		Local Co-ordinate Reference: Well No. 218H									
Project: Eddy County, NM (NAD83)		TVD Reference: Well @ 3245.50usft									
Site: Boros Federal		MD Reference: Well @ 3245.50usft									
Well: No. 218H		North Reference: Grid									
Wellbore: OH		Survey Calculation Method: Minimum Curvature									
Design: MWD-148'-21758', PTB: 21819'		Database: WellPlanner1									
Survey											
MD (usft)	Inc (°)	Azi (azimuth) (°)	TVD (usft)	V. Sec (usft)	N/S (usft)	E/W (usft)	Closure Distance (usft)	Closure Azimuth (°)	Northing (usft)	Easting (usft)	
18,947.00	92.44	176.50	11,839.20	7,155.68	-7,152.77	485.21	7,169.21	176.12	374,899.23	719,434.21	
19,042.00	91.43	176.94	11,836.00	7,250.50	-7,247.56	490.64	7,264.15	176.13	374,804.44	719,439.64	
19,137.00	90.55	175.19	11,834.36	7,345.29	-7,342.32	497.16	7,359.13	176.13	374,709.68	719,446.16	
19,232.00	90.51	176.24	11,833.48	7,440.07	-7,437.04	504.26	7,454.12	176.12	374,614.96	719,453.26	
19,327.00	91.52	178.53	11,831.79	7,534.97	-7,531.92	508.59	7,549.07	176.14	374,520.08	719,457.59	
19,423.00	92.00	179.84	11,828.84	7,630.92	-7,627.87	509.95	7,644.89	176.18	374,424.13	719,458.95	
19,518.00	91.96	179.58	11,825.56	7,725.86	-7,722.81	510.43	7,739.66	176.22	374,329.19	719,459.43	
19,613.00	92.04	181.69	11,822.25	7,820.78	-7,817.74	509.38	7,834.32	176.27	374,234.26	719,458.38	
19,708.00	92.18	181.07	11,818.75	7,915.68	-7,912.65	507.10	7,928.88	176.33	374,139.35	719,456.10	
19,803.00	91.34	182.13	11,815.83	8,010.57	-8,007.56	504.44	8,023.44	176.40	374,044.44	719,453.44	
19,899.00	91.43	181.16	11,813.51	8,106.49	-8,103.49	501.69	8,119.01	176.46	373,948.51	719,450.69	
19,994.00	90.95	181.60	11,811.54	8,201.42	-8,198.44	499.40	8,213.64	176.51	373,853.56	719,448.40	
20,089.00	91.43	181.87	11,809.56	8,296.34	-8,293.38	496.53	8,308.23	176.57	373,758.62	719,445.53	
20,184.00	89.80	182.22	11,808.55	8,391.24	-8,388.31	493.14	8,402.79	176.64	373,663.69	719,442.14	
20,279.00	89.27	181.16	11,809.32	8,486.18	-8,483.26	490.33	8,497.42	176.69	373,568.74	719,439.33	
20,375.00	90.20	181.16	11,809.76	8,582.14	-8,579.24	488.39	8,593.13	176.74	373,472.76	719,437.39	
20,470.00	89.76	179.67	11,809.79	8,677.13	-8,674.24	487.70	8,687.94	176.78	373,377.76	719,436.70	
20,565.00	89.85	179.76	11,810.12	8,772.13	-8,769.24	488.18	8,782.81	176.81	373,282.76	719,437.18	
20,660.00	90.95	182.22	11,809.45	8,867.09	-8,864.21	486.53	8,877.55	176.86	373,187.79	719,435.53	
20,755.00	91.56	182.30	11,807.37	8,961.97	-8,959.11	482.79	8,972.11	176.92	373,092.89	719,431.79	
20,850.00	90.29	183.71	11,805.84	9,056.79	-9,053.97	477.81	9,066.57	176.98	372,998.03	719,426.81	
20,945.00	90.81	183.71	11,804.93	9,151.55	-9,148.76	471.66	9,160.91	177.05	372,903.24	719,420.66	
21,040.00	91.87	184.06	11,802.71	9,246.26	-9,243.52	465.23	9,255.22	177.12	372,808.48	719,414.23	
21,136.00	90.99	183.10	11,800.31	9,342.00	-9,339.30	459.24	9,350.58	177.18	372,712.70	719,408.24	
21,231.00	89.67	180.20	11,799.76	9,436.93	-9,434.24	456.50	9,445.28	177.23	372,617.76	719,405.50	
21,326.00	90.15	178.79	11,799.91	9,531.92	-9,529.24	457.34	9,540.21	177.25	372,522.76	719,406.34	
21,421.00	90.37	178.70	11,799.48	9,626.91	-9,624.21	459.42	9,635.17	177.27	372,427.79	719,408.42	



ProDirectional Survey Report



Company: Matador Resources				Local Co-ordinate Reference: Well No. 218H TVD Reference: Well @ 3245.50usft MD Reference: Well @ 3245.50usft North Reference: Grid Survey Calculation Method: Minimum Curvature Database: WellPlanner1						
Project: Eddy County, NM (NAD83)										
Site: Boros Federal										
Well: No. 218H										
Wellbore: OH										
Design: MWD-148'-21758', PTB: 21819'										
Survey										
MD (usft)	Inc (°)	Azi (azimuth) (°)	TVD (usft)	V. Sec (usft)	N/S (usft)	E/W (usft)	Closure Distance (usft)	Closure Azimuth (°)	Northing (usft)	Easting (usft)
21,517.00	89.71	177.73	11,799.41	9,722.88	-9,720.17	462.41	9,731.16	177.28	372,331.83	719,411.41
21,612.00	88.97	176.77	11,800.51	9,817.79	-9,815.05	466.97	9,826.15	177.28	372,236.95	719,415.97
21,707.00	88.84	176.68	11,802.32	9,912.65	-9,909.88	472.39	9,921.13	177.27	372,142.12	719,421.39
21,729.60	89.07	176.68	11,802.74	9,935.21	-9,932.43	473.70	9,943.72	177.27	372,119.57	719,422.70
LTP: 21729.6' MD										
21,758.00	89.36	176.68	11,803.12	9,963.57	-9,960.78	475.35	9,972.12	177.27	372,091.22	719,424.35
Last Survey: 21758' MD										
21,819.00	89.36	176.68	11,803.81	10,024.49	-10,021.68	478.88	10,033.11	177.26	372,030.32	719,427.88
PTB: 21819' MD										
Design Annotations										
Measured Depth (usft)		Vertical Depth (usft)		Local Coordinates						
				+N/-S (usft)	+E/-W (usft)	Comment				
11,250.70		11,223.68		302.79		428.69		FTP: 11250.7' MD		
11,856.00		11,664.43		-86.28		434.78		Final Gordon Survey: 11856' MD		
11,945.00		11,694.50		-169.95		432.60		First SLB Survey: 11945' MD		
15,624.00		11,815.90		-3,831.80		426.15		Last SLB Survey: 15624' MD		
15,713.00		11,817.20		-3,920.79		425.69		Pro MWD First Survey: 15713' MD		
21,729.60		11,802.74		-9,932.43		473.70		LTP: 21729.6' MD		
21,758.00		11,803.12		-9,960.78		475.35		Last Survey: 21758' MD		
21,819.00		11,803.81		-10,021.68		478.88		PTB: 21819' MD		