

DISTRICT I  
1625 N. FRENCH DR., HOBBS, NM 88240  
Phone: (575) 393-6161 Fax: (575) 393-0720

DISTRICT II  
511 S. FIRST ST., ARTESIA, NM 88210  
Phone: (575) 746-1283 Fax: (575) 746-9720

DISTRICT III  
1000 RIO BRAZOS RD., AZTEC, NM 87410  
Phone: (505) 334-6178 Fax: (505) 334-6170

DISTRICT IV  
1220 S. ST. FRANCIS DR., SANTA FE, NM 87505  
Phone: (505) 476-3460 Fax: (505) 476-3462

State of New Mexico  
Energy, Minerals & Natural Resources Department  
**OIL CONSERVATION DIVISION**  
1220 SOUTH ST. FRANCIS DR.  
Santa Fe, New Mexico 87505

Form C-102  
Revised August 1, 2011  
Submit one copy to appropriate  
District Office

☒ AMENDED REPORT  
As Drilled

**WELL LOCATION AND ACREAGE DEDICATION PLAT**

|                            |                                      |                    |   |
|----------------------------|--------------------------------------|--------------------|---|
| API Number<br>30-015-46784 |                                      | Pool Code<br>96217 | Pool Name<br>Willow Lake Bone Spring; Southeast |
| Property Code<br>313927    | Property Name<br>ADMIRAL FEDERAL COM |                    | Well Number<br>502H                             |
| OGRID No.<br>229137        | Operator Name<br>COG OPERATING, LLC  |                    | Elevation<br>2982.9'                            |

**Surface Location**

|               |         |          |       |         |               |                  |               |                |        |
|---------------|---------|----------|-------|---------|---------------|------------------|---------------|----------------|--------|
| UL or lot No. | Section | Township | Range | Lot Idn | Feet from the | North/South line | Feet from the | East/West line | County |
| M             | 28      | 25-S     | 29-E  |         | 220           | SOUTH            | 910           | WEST           | EDDY   |

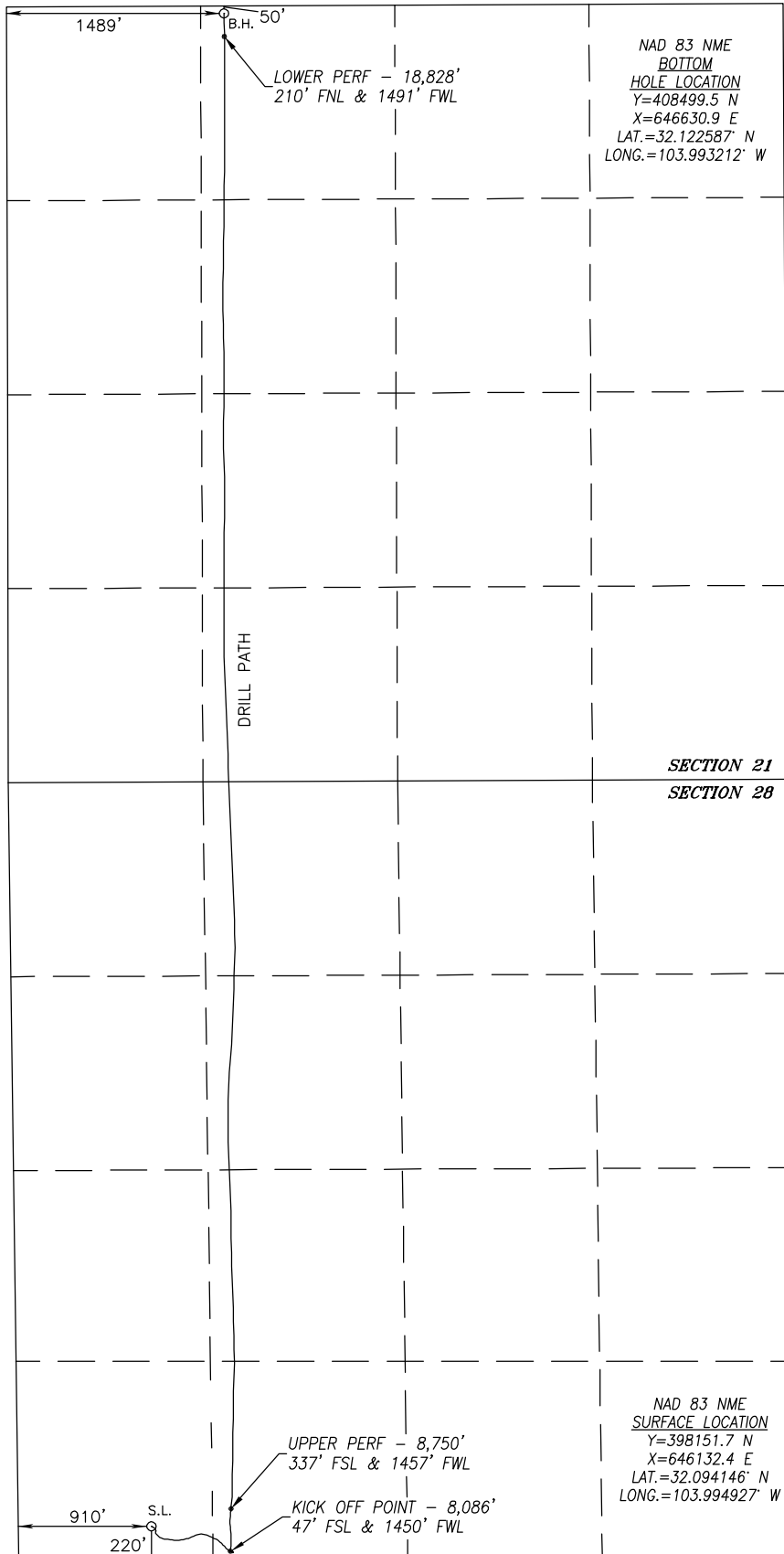
**Bottom Hole Location If Different From Surface**

|                         |                 |                    |           |         |               |                  |               |                |        |
|-------------------------|-----------------|--------------------|-----------|---------|---------------|------------------|---------------|----------------|--------|
| UL or lot No.           | Section         | Township           | Range     | Lot Idn | Feet from the | North/South line | Feet from the | East/West line | County |
| C                       | 21              | 25-S               | 29-E      |         | 50            | NORTH            | 1489          | WEST           | EDDY   |
| Dedicated Acres<br>1280 | Joint or Infill | Consolidation Code | Order No. |         |               |                  |               |                |        |

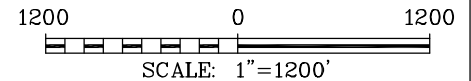
NO ALLOWABLE WILL BE ASSIGNED TO THIS COMPLETION UNTIL ALL INTERESTS HAVE BEEN CONSOLIDATED  
OR A NON-STANDARD UNIT HAS BEEN APPROVED BY THE DIVISION

SEE PAGE 2

|                         |                                      |                      |
|-------------------------|--------------------------------------|----------------------|
| Property Code<br>313927 | Property Name<br>ADMIRAL FEDERAL COM | Well Number<br>502H  |
| OGRID No.<br>229137     | Operator Name<br>COG OPERATING, LLC  | Elevation<br>2982.9' |



SURFACE INFO AND BOREPATH SHOWN HEREON IS BASED ON DIRECTIONAL SURVEY REPORT PROVIDED BY COG OPERATING, LLC FOR THE ADMIRAL FEDERAL COM 502H SUPPLIED TO HARCROW SURVEYING, LLC ON JANUARY 27, 2021



#### OPERATOR CERTIFICATION

I hereby certify that the information herein is true and complete to the best of my knowledge and belief, and that this organization either owns a working interest or unleased mineral interest in the land including the proposed bottom hole location or has a right to drill this well at this location pursuant to a contract with an owner of such mineral or working interest, or to a voluntary pooling agreement or a compulsory pooling order heretofore entered by the division.

Amanda Avery 3/15/21  
Signature Date

Amanda Avery  
Printed Name  
amanda.lavery@conocophillips.com  
E-mail Address

#### SURVEYOR CERTIFICATION

I hereby certify that the well location shown on this plat was plotted from field notes of actual surveys made by me or under my supervision, and that the same is true and correct to the best of my belief.

AUG. 30, 2019/JULY 2, 2020

Date of Survey/Date of Geographic Survey

Signature & Seal of Professional Surveyor



Chad Harcrow 2/1/21  
Certificate No. CHAD HARCROW 17777

Intent ☐ As Drilled ☐

|                |                |             |
|----------------|----------------|-------------|
| API #          |                |             |
| Operator Name: | Property Name: | Well Number |

Kick Off Point (KOP)

|          |         |          |       |     |           |          |      |          |        |
|----------|---------|----------|-------|-----|-----------|----------|------|----------|--------|
| UL       | Section | Township | Range | Lot | Feet      | From N/S | Feet | From E/W | County |
| Latitude |         |          |       |     | Longitude |          |      |          | NAD    |

First Take Point (FTP)

|          |         |          |       |     |           |          |      |          |        |
|----------|---------|----------|-------|-----|-----------|----------|------|----------|--------|
| UL       | Section | Township | Range | Lot | Feet      | From N/S | Feet | From E/W | County |
| Latitude |         |          |       |     | Longitude |          |      |          | NAD    |

Last Take Point (LTP)

|          |         |          |       |     |           |          |      |          |        |
|----------|---------|----------|-------|-----|-----------|----------|------|----------|--------|
| UL       | Section | Township | Range | Lot | Feet      | From N/S | Feet | From E/W | County |
| Latitude |         |          |       |     | Longitude |          |      |          | NAD    |

Is this well the defining well for the Horizontal Spacing Unit? ☐

Is this well an infill well? ☐

If infill is yes please provide API if available, Operator Name and well number for Defining well for Horizontal Spacing Unit.

|                |                |             |
|----------------|----------------|-------------|
| API #          |                |             |
| Operator Name: | Property Name: | Well Number |