

District I

1625 N. French Dr., Hobbs, NM 88240

District II

1301 W. Grand Avenue, Artesia, NM 88210

District III

1000 Rio Brazos Rd., Aztec, NM 87410

District IV

1220 S. St. Francis Dr., Santa Fe, NM 87505

State of New Mexico

Energy, Minerals & Natural Resources Department

HOBBS OIL CONSERVATION DIVISION

1220 South St. Francis Dr.

Santa Fe, NM 87505

Form C-102

Revised October 15, 2009

Submit one copy to appropriate

District Office

☐ AMENDED REPORT

WELL LOCATION AND ACREAGE DEDICATION PLAT

API Number 30-015-39365		Pool Code 55510	Pool Name Scanlon Draw PARKWAY; BONE SPRING
Property Code 38436	Property Name EMERALD PWU "20"		Well Number 3H
OGRID No. 6137	Operator Name DEVON ENERGY PRODUCTION COMPANY, L.P.		Elevation 3324.2

Surface Location

UL or lot no.	Section	Township	Range	Lot Idn	Feet from the	North/South line	Feet from the	East/West line	County
L	20	19 S	29 E		2145	SOUTH	330	WEST	EDDY

Bottom Hole Location If Different From Surface

UL or lot no.	Section	Township	Range	Lot Idn	Feet from the	North/South line	Feet from the	East/West line	County
I	20	19 S	29 E		2145	SOUTH	330	EAST	EDDY

Dedicated Acres	Joint or Infill	Consolidation Code	Order No.
160			

No allowable will be assigned to this completion until all interests have been consolidated or a non-standard unit has been approved by the division.

NW CORNER SEC. 20 LAT. = 32.653638' LONG. = 104.105599' NMSP EAST (FT) N = 601600.27 E = 611424.89		NE CORNER SEC. 20 LAT. = 32.653592' LONG. = 104.088365' NMSP EAST (FT) N = 601595.30 E = 616730.14	
PENETRATION POINT: 2145' FSL & 330' FWL			
PRODUCING AREA		PROJECT AREA	
EMERALD PWU "20" #3H ELEV. = 3324.2' LAT. = 32.6490187' (NAD83) LONG. = 104.1045266' NMSP EAST (FT) N = -598464.30 E = 611763.81		BOTTOM OF HOLE LAT. = 32.644967' LONG. = 104.089467' NMSP EAST (FT) N = 598455.83 E = 616398.12	
SURFACE LOCATION		BOTTOM OF HOLE	
SW CORNER SEC. 20 LAT. = 32.639128' LONG. = 104.105599' NMSP EAST (FT) N = 596320.20 E = 611436.01		SE CORNER SEC. 20 LAT. = 32.639070' LONG. = 104.088392' NMSP EAST (FT) N = 596310.66 E = 616734.00	

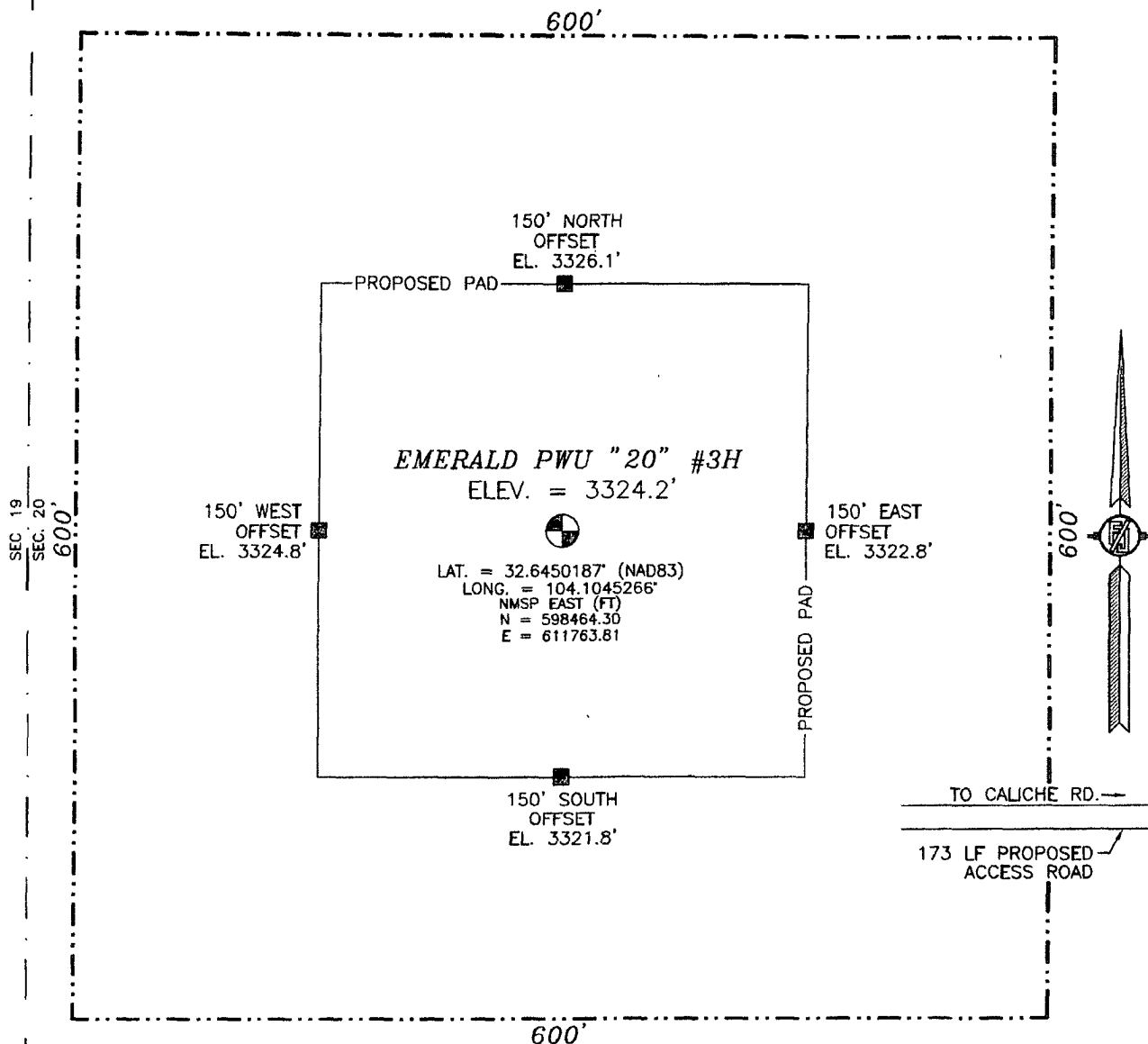
17 OPERATOR CERTIFICATION
I hereby certify that the information contained herein is true and complete to the best of my knowledge and belief, and that this organization either owns a working interest or released mineral interest in the land including the proposed bottom hole location or has a right to drill this well at this location pursuant to a contract with an owner of such a mineral or working interest, or to a voluntary pooling agreement or a compulsory pooling order heretofore entered by the division.

 Signature: _____ Date: **8/29/11**
 Printed Name: **STEPHANIE A. YSASAGA**

18 SURVEYOR CERTIFICATION
I hereby certify that the well location shown on this plat was plotted from field notes of actual surveys made by me or under my supervision, and that the same is true and correct to the best of my belief.

 Signature and Seal of Professional Surveyor
 Certificate Number: **WILLIAM E. PAMILLO, PLS 12797**
 SURVEY NO. 510-R

SECTION 20, TOWNSHIP 19 SOUTH, RANGE 29 EAST, N.M.P.M.
EDDY COUNTY, STATE OF NEW MEXICO



0 10 50 100 200
SCALE 1" = 100'

DIRECTIONS TO LOCATION:
FROM CR #235 (CURRY COMB) AND CR #210 (OLD LOCO) GO NORTHWEST
ON CR #235 1.3 MILES, TURN LEFT AND GO SOUTH 0.9 MILES AND THE
LOCATION IS ON THE RIGHT (WEST) 383'.

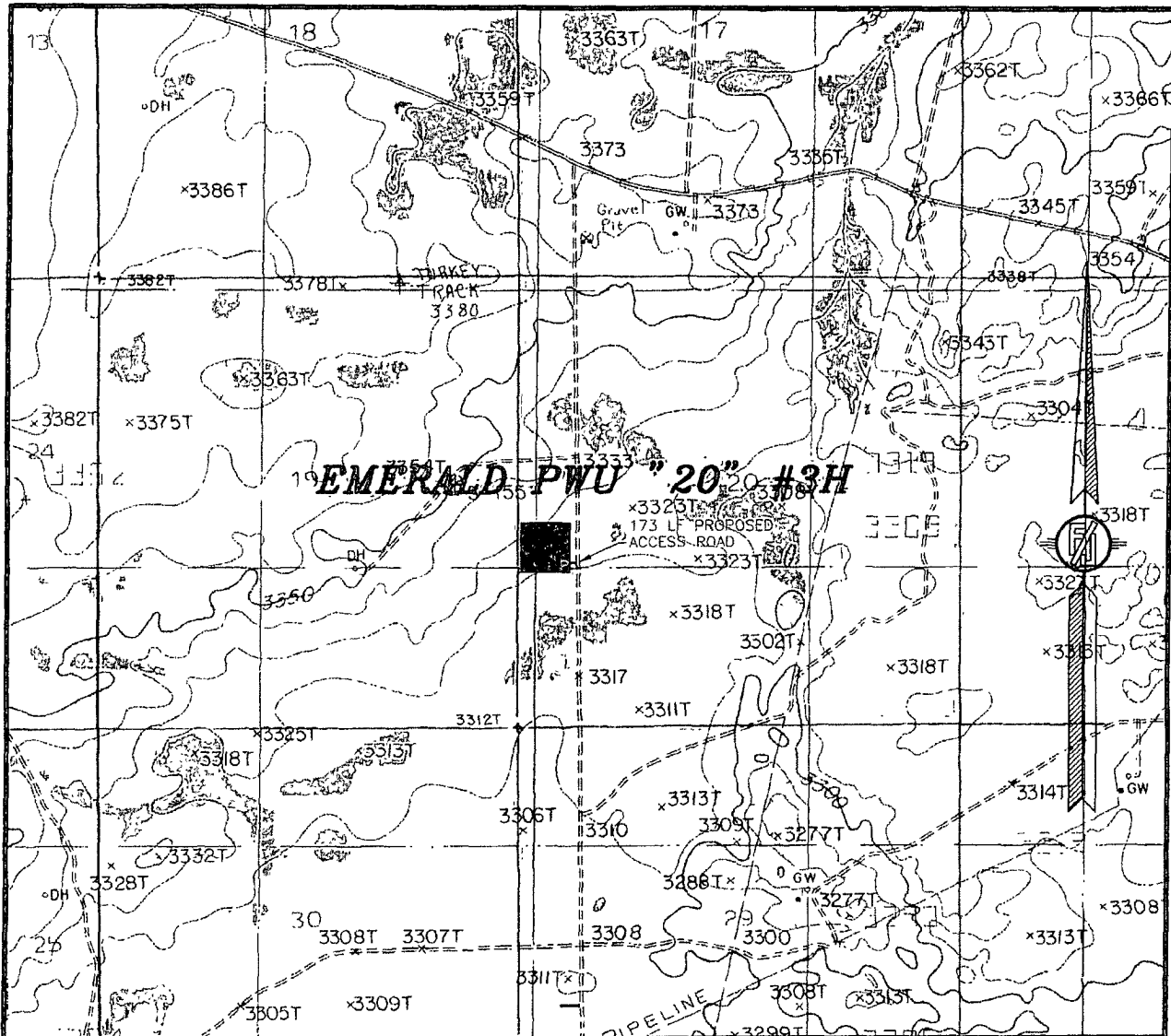
DEVON ENERGY PRODUCTION COMPANY, L.P.
EMERALD PWU "20" #3H
LOCATED 2145 FT. FROM THE SOUTH LINE
AND 330 FT. FROM THE WEST LINE OF
SECTION 20, TOWNSHIP 19 SOUTH,
RANGE 29 EAST, N.M.P.M.
EDDY COUNTY, STATE OF NEW MEXICO

SURVEY NO. 510

JULY 6, 2011

MADRON SURVEYING, INC. 301 SOUTH CANAL (575) 706-9672 CARLSBAD, NEW MEXICO

SECTION 20, TOWNSHIP 19 SOUTH, RANGE 29 EAST, N.M.P.M.
EDDY COUNTY, STATE OF NEW MEXICO
LOCATION VERIFICATION MAP



CONTOUR INTERVAL:
ILLINOIS CAMP NE, NM
ILLINOIS CAMP SE, NM

NOT TO SCALE

DEVON ENERGY PRODUCTION COMPANY, L.P.

EMERALD PWU "20" #3H

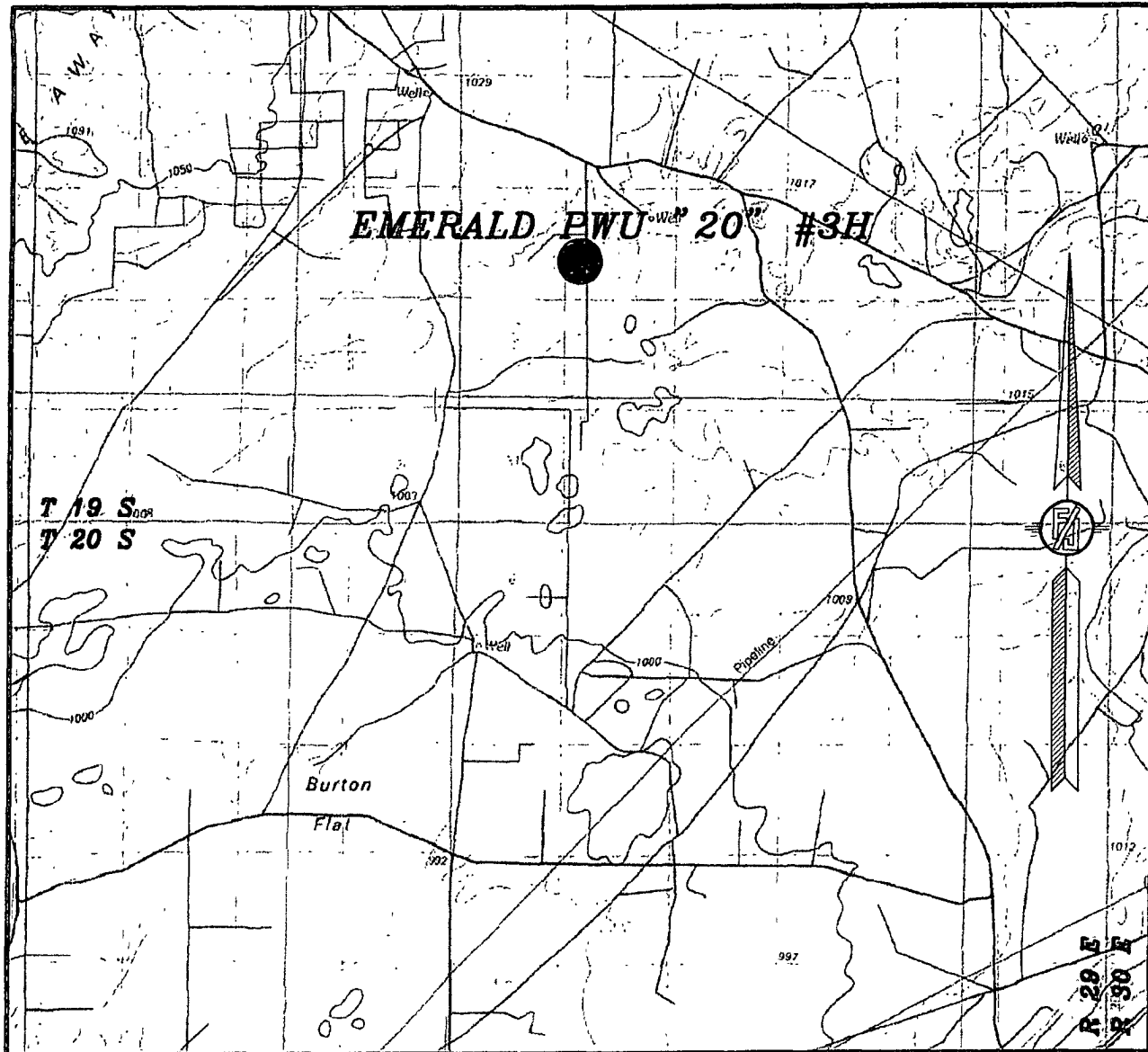
LOCATED 2145 FT. FROM THE SOUTH LINE
AND 330 FT. FROM THE WEST LINE OF
SECTION 20, TOWNSHIP 19 SOUTH,
RANGE 29 EAST, N.M.P.M.
EDDY COUNTY, STATE OF NEW MEXICO

JULY 6, 2011

SURVEY NO. 510

MADRON SURVEYING, INC. 301 SOUTH CANAL CARLSBAD, NEW MEXICO
(575) 706-9672

SECTION 20, TOWNSHIP 19 SOUTH, RANGE 29 EAST, N.M.P.M.
EDDY COUNTY, STATE OF NEW MEXICO
VICINITY MAP



NOT TO SCALE

DEVON ENERGY PRODUCTION COMPANY, L.P.

EMERALD PWU "20" #3H

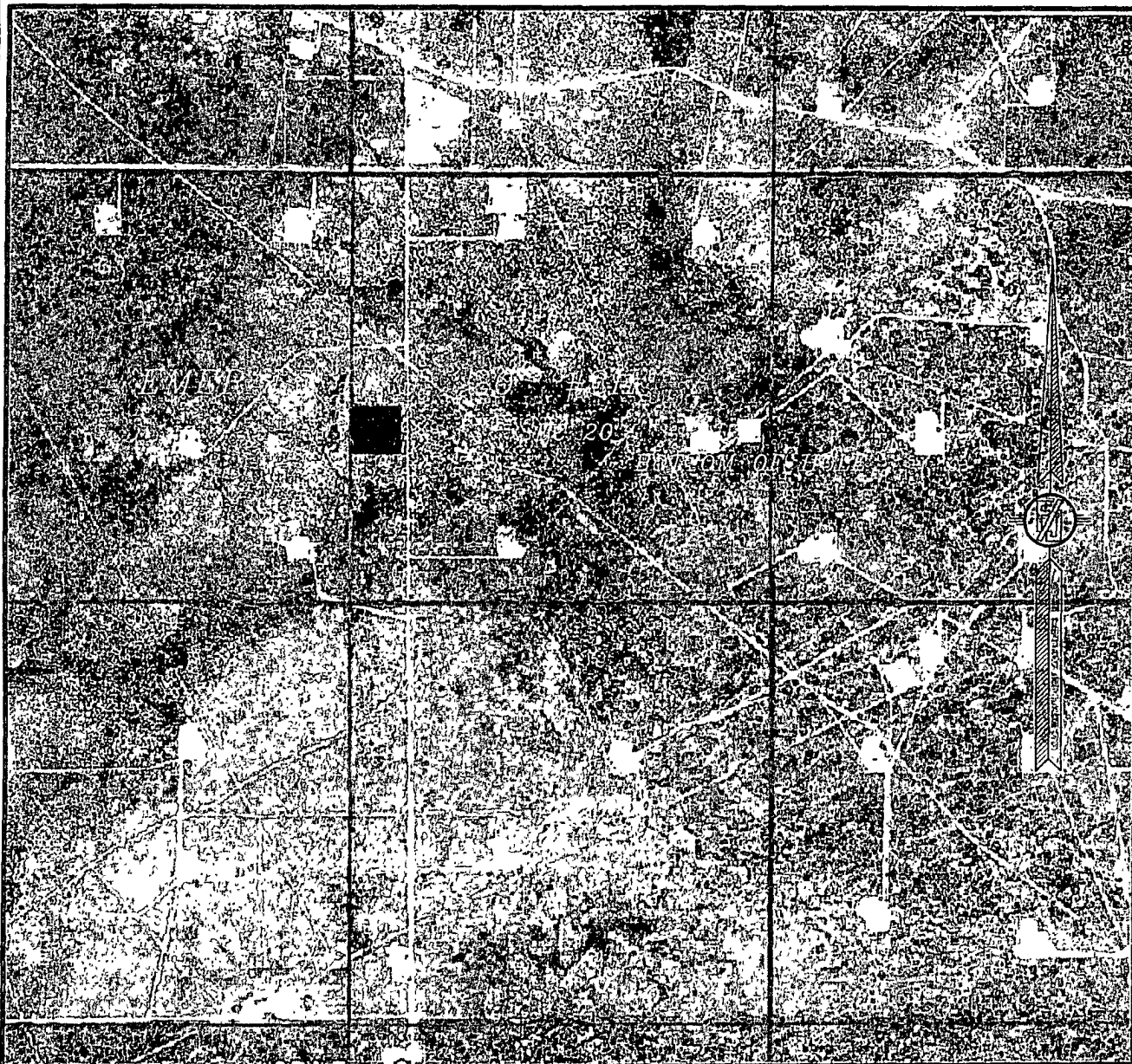
LOCATED 2145 FT. FROM THE SOUTH LINE
AND 330 FT. FROM THE WEST LINE OF
SECTION 20, TOWNSHIP 19 SOUTH,
RANGE 29 EAST, N.M.P.M.
EDDY COUNTY, STATE OF NEW MEXICO

JULY 6, 2011

SURVEY NO. 510

MADRON SURVEYING, INC. 301 SOUTH CANAL CARLSBAD, NEW MEXICO
(575) 706-9672

SECTION 20, TOWNSHIP 19 SOUTH, RANGE 29 EAST, N.M.P.M.
EDDY COUNTY, STATE OF NEW MEXICO
AERIAL PHOTO



NOT TO SCALE
AERIAL PHOTO:
GOOGLE EARTH
USDA-AUG, 2009

DEVON ENERGY PRODUCTION COMPANY, L.P.

EMERALD PWU "20" #3H

LOCATED 2145 FT. FROM THE SOUTH LINE
AND 330 FT. FROM THE WEST LINE OF
SECTION 20, TOWNSHIP 19 SOUTH,
RANGE 29 EAST, N.M.P.M.
EDDY COUNTY, STATE OF NEW MEXICO

JULY 6, 2011

SURVEY NO. 510

MADRON SURVEYING, INC. 301 SOUTH CANAL CARLSBAD, NEW MEXICO
(575) 706-9672

SECTION LAND PLAT

County Eddy State New Mexico

Section 20 Township 19 S Range 29 E

Emerald PWU 20 3 H

SHL: 2145' FSL, 330' FWL / BHL: 2145' FSL, 330' FEL

SHL ●			BHL →
ST NM K0 3702	ST NM L0 1513	ST NM K0 4251	ST NM L0 1513