

30-015-38600

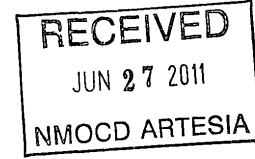


Job Number: 700002274 WT-WT
 Company: LIME ROCK RESOURCES A
 Lease/Well: EAGLE 4 STATE COM #2H
 Location: EDDY COUNTY, NM
 Rig Name: UDI 29
 RKB: 12.6
 G.L. or M.S.L.: GL

State/Country: NM
 Declination: 7.7
 Grid: -0.13
 File name: C:\DOCUME~1\PDS\DESKTOP\EAGLE4~1\002274.SVY
 Date/Time: 13-May-11 / 22:01
 Curve Name: WORK CURVE

Pathfinder Drilling

WINSERVE SURVEY CALCULATIONS
 Minimum Curvature Method
 Vertical Section Plane 269.92
 Vertical Section Referenced to Wellhead
 Rectangular Coordinates Referenced to Wellhead



Measured Depth FT	Incl Angle Deg	Drift Direction Deg	True Vertical Depth	N-S FT	E-W FT	Vertical Section FT	CLOSURE		Dogleg Severity Deg/100
							Distance FT	Direction Deg	
.00	.00	.00	.00	.00	.00	.00	.00	.00	.00
SCIENTIFIC GYRO SURVEY									
50.00	.29	225.82	50.00	-.09	-.09	.09	.13	225.82	.58
SCIENTIFIC GYRO SURVEY									
100.00	.58	225.82	100.00	-.35	-.36	.36	.51	225.82	.58
SCIENTIFIC GYRO SURVEY									
150.00	.54	228.73	150.00	-.68	-.72	.72	.99	226.51	.10
SCIENTIFIC GYRO SURVEY									
200.00	.66	263.95	199.99	-.87	-1.19	1.19	1.47	233.71	.76
SCIENTIFIC GYRO SURVEY									
250.00	.70	290.93	249.99	-.79	-1.76	1.76	1.93	245.74	.64
SCIENTIFIC GYRO SURVEY									
300.00	.95	288.13	299.98	-.55	-2.44	2.44	2.50	257.20	.51
SCIENTIFIC GYRO SURVEY									
350.00	.91	288.22	349.98	-.30	-3.21	3.21	3.22	264.65	.08

Measured Depth FT	Incl Angle Deg	Drift Direction Deg	True Vertical Depth	N-S FT	E-W FT	Vertical Section FT	C L O S U R E		Dogleg Severity Deg/100
							Distance FT	Direction Deg	
SCIENTIFIC GYRO SURVEY									
400.00	.70	265.02	399.97	-20	-3.89	3.89	3.89	267.02	.77
SCIENTIFIC GYRO SURVEY									
450.00	.81	238.36	449.97	-41	-4.49	4.49	4.51	264.73	.73
SCIENTIFIC GYRO SURVEY									
500.00	1.06	239.36	499.96	-84	-5.19	5.19	5.26	260.86	.50
SCIENTIFIC GYRO SURVEY									
550.00	1.34	251.52	549.95	-1.26	-6.14	6.15	6.27	258.44	.75
SCIENTIFIC GYRO SURVEY									
600.00	1.57	259.18	599.94	-1.57	-7.37	7.37	7.54	257.97	.60
SCIENTIFIC GYRO SURVEY									
650.00	1.53	260.11	649.92	-1.81	-8.70	8.70	8.89	258.23	.09
SCIENTIFIC GYRO SURVEY									
700.00	1.75	257.92	699.90	-2.09	-10.11	10.11	10.32	258.33	.46
THE FOLLOWING ARE PATHFINDER MWD SURVEYS									
728.00	1.67	261.01	727.88	-2.24	-10.93	10.93	11.16	258.41	.44
916.00	2.02	261.83	915.79	-3.14	-16.91	16.92	17.20	259.48	.19
1106.00	1.93	268.19	1105.67	-3.72	-23.43	23.43	23.72	260.98	.12
1294.00	1.32	256.98	1293.60	-4.31	-28.70	28.71	29.02	261.47	.36
1483.00	.44	187.56	1482.58	-5.52	-30.92	30.92	31.40	259.89	.65
1673.00	.70	173.45	1672.57	-7.39	-30.88	30.89	31.75	256.54	.15
1862.00	1.49	134.99	1861.53	-10.28	-29.01	29.02	30.78	250.50	.55
2051.00	.97	104.78	2050.49	-12.42	-25.73	25.74	28.57	244.23	.43
2240.00	2.55	104.20	2239.40	-13.86	-20.10	20.12	24.42	235.41	.84
2430.00	.97	339.76	2429.34	-13.39	-16.56	16.58	21.30	231.05	1.68
2620.00	.97	343.27	2619.31	-10.34	-17.58	17.59	20.39	239.54	.03
2809.00	.70	327.09	2808.29	-7.84	-18.67	18.68	20.25	247.22	.19
2998.00	.79	323.26	2997.27	-5.82	-20.07	20.08	20.90	253.82	.05
3188.00	.88	337.81	3187.25	-3.42	-21.41	21.41	21.68	260.91	.12
3378.00	.79	333.62	3377.23	-.90	-22.54	22.54	22.56	267.71	.06
3566.00	1.06	318.45	3565.21	1.56	-24.27	24.27	24.32	273.68	.19
3756.00	1.06	341.21	3755.18	4.54	-26.00	26.00	26.40	279.91	.22
3945.00	.97	333.98	3944.15	7.63	-27.27	27.26	28.32	285.64	.08
4135.00	.88	326.66	4134.12	10.30	-28.77	28.76	30.56	289.69	.08
4246.00	.97	321.80	4245.11	11.75	-29.82	29.81	32.06	291.50	.11

Measured Depth FT	Incl Angle Deg	Drift Direction Deg	True Vertical Depth	N-S FT	E-W FT	Vertical Section FT	C L O S U R E		Dogleg Severity Deg/100
							Distance FT	Direction Deg	
4307.00	2.73	273.57	4306.08	12.25	-31.59	31.58	33.88	291.19	3.62
4338.00	6.07	264.78	4336.98	12.14	-33.96	33.95	36.07	289.67	10.96
4370.00	10.11	264.78	4368.66	11.73	-38.45	38.43	40.20	286.97	12.62
4402.00	14.07	265.13	4399.94	11.15	-45.12	45.11	46.48	283.88	12.38
4433.00	18.11	266.45	4429.72	10.53	-53.69	53.67	54.71	281.09	13.08
4462.00	20.58	266.80	4457.08	9.96	-63.28	63.26	64.06	278.95	8.53
4494.00	23.13	265.65	4486.78	9.17	-75.16	75.15	75.72	276.96	8.08
4525.00	27.08	265.46	4514.85	8.15	-88.27	88.26	88.65	275.28	12.74
4557.00	30.95	264.89	4542.82	6.84	-103.74	103.73	103.96	273.77	12.12
4588.00	34.82	265.59	4568.85	5.45	-120.51	120.50	120.63	272.59	12.54
4620.00	38.25	267.06	4594.56	4.24	-139.51	139.51	139.58	271.74	11.06
4651.00	41.68	266.31	4618.32	3.09	-159.39	159.38	159.42	271.11	11.17
4683.00	45.46	266.63	4641.50	1.73	-181.40	181.40	181.41	270.55	11.83
4712.00	49.51	267.44	4661.09	.63	-202.74	202.74	202.74	270.18	14.12
4744.00	53.29	268.73	4681.05	-20	-227.73	227.73	227.73	269.95	12.22
4775.00	56.63	269.73	4698.85	-54	-253.11	253.11	253.11	269.88	11.09
4807.00	60.50	269.81	4715.53	-64	-280.40	280.40	280.40	269.87	12.10
4838.00	64.63	269.73	4729.81	-76	-307.91	307.91	307.91	269.86	13.32
4870.00	68.94	270.44	4742.43	-71	-337.31	337.31	337.31	269.88	13.62
4983.00	76.68	270.47	4775.80	.15	-445.18	445.18	445.18	270.02	6.85
5015.00	80.72	268.87	4782.07	-.04	-476.55	476.55	476.55	270.00	13.54
5047.00	83.10	268.48	4786.57	-.77	-508.22	508.22	508.22	269.91	7.53
5078.00	83.62	268.33	4790.15	-1.63	-539.00	539.00	539.00	269.83	1.74
5110.00	83.98	268.30	4793.61	-2.56	-570.80	570.80	570.81	269.74	1.13
5142.00	85.30	268.23	4796.60	-3.53	-602.65	602.65	602.66	269.66	4.13
5173.00	86.44	268.12	4798.83	-4.51	-633.55	633.56	633.57	269.59	3.69
5202.00	87.41	267.98	4800.39	-5.50	-662.49	662.50	662.51	269.52	3.38
5230.00	87.76	267.54	4801.57	-6.59	-690.44	690.45	690.48	269.45	2.01
5260.00	88.72	268.04	4802.49	-7.75	-720.41	720.42	720.45	269.38	3.61
5289.00	90.48	268.24	4802.69	-8.69	-749.39	749.40	749.44	269.34	6.11
EOC									
5319.00	91.45	268.39	4802.19	-9.57	-779.37	779.39	779.43	269.30	3.27
5406.00	92.07	269.07	4799.51	-11.50	-866.31	866.32	866.39	269.24	1.06
5494.00	91.45	269.08	4796.81	-12.92	-954.26	954.27	954.34	269.22	.70

Measured Depth FT	Incl Angle Deg	Drift Direction Deg	True Vertical Depth	N-S FT	E-W FT	Vertical Section FT	C L O S U R E		Dogleg Severity Deg/100
							Distance FT	Direction Deg	
5524.00	91.98	268.97	4795.91	-13.43	-984.24	984.26	984.33	269.22	1.80
5554.00	92.77	268.87	4794.67	-13.99	-1014.21	1014.23	1014.30	269.21	2.65
5581.00	92.42	269.07	4793.45	-14.48	-1041.17	1041.19	1041.28	269.20	1.49
5611.00	92.33	270.14	4792.20	-14.68	-1071.15	1071.17	1071.25	269.21	3.58
5641.00	91.63	271.29	4791.17	-14.31	-1101.13	1101.15	1101.22	269.26	4.49
5670.00	91.36	271.88	4790.41	-13.51	-1130.11	1130.12	1130.19	269.32	2.24
5700.00	91.10	272.76	4789.77	-12.29	-1160.07	1160.09	1160.14	269.39	3.06
5730.00	91.80	273.37	4789.01	-10.69	-1190.02	1190.03	1190.07	269.49	3.09
5763.00	92.59	272.63	4787.74	-8.96	-1222.95	1222.96	1222.98	269.58	3.28
5795.00	93.47	273.13	4786.05	-7.36	-1254.87	1254.87	1254.89	269.66	3.16
5826.00	92.59	272.51	4784.41	-5.83	-1285.78	1285.79	1285.80	269.74	3.47
5858.00	92.15	272.54	4783.09	-4.43	-1317.73	1317.73	1317.73	269.81	1.38
5895.00	90.22	272.37	4782.32	-2.84	-1354.68	1354.68	1354.69	269.88	5.24
5927.00	90.75	271.85	4782.05	-1.66	-1386.66	1386.66	1386.66	269.93	2.32
5959.00	89.52	271.26	4781.98	-8.0	-1418.65	1418.65	1418.65	269.97	4.26
5991.00	89.34	271.10	4782.30	-.14	-1450.64	1450.64	1450.64	269.99	.75
6022.00	88.64	270.99	4782.84	.43	-1481.63	1481.63	1481.63	270.02	2.29
6054.00	89.60	270.08	4783.33	.73	-1513.62	1513.62	1513.62	270.03	4.13
6086.00	90.13	268.87	4783.41	.43	-1545.62	1545.62	1545.62	270.02	4.13
6118.00	89.87	268.85	4783.41	-.20	-1577.61	1577.61	1577.61	269.99	.81
6149.00	89.60	268.67	4783.55	-.87	-1608.61	1608.61	1608.61	269.97	1.05
6181.00	90.66	268.70	4783.48	-1.61	-1640.60	1640.60	1640.60	269.94	3.31
6213.00	91.54	268.16	4782.87	-2.48	-1672.58	1672.58	1672.58	269.91	3.23
6244.00	92.86	268.19	4781.68	-3.47	-1703.54	1703.54	1703.54	269.88	4.26
6276.00	92.77	268.62	4780.11	-4.36	-1735.49	1735.49	1735.49	269.86	1.37
6308.00	92.86	268.30	4778.53	-5.22	-1767.44	1767.44	1767.45	269.83	1.04
6339.00	93.74	268.75	4776.75	-6.02	-1798.38	1798.38	1798.39	269.81	3.19
6371.00	94.18	268.61	4774.54	-6.75	-1830.29	1830.30	1830.30	269.79	1.44
6403.00	93.83	268.24	4772.30	-7.63	-1862.20	1862.21	1862.22	269.77	1.59
6435.00	93.74	268.59	4770.19	-8.51	-1894.12	1894.13	1894.14	269.74	1.13
6466.00	93.74	268.51	4768.17	-9.29	-1925.04	1925.05	1925.07	269.72	.26
6498.00	93.91	268.31	4766.03	-10.18	-1956.96	1956.97	1956.99	269.70	.82
6530.00	93.91	268.09	4763.85	-11.18	-1988.87	1988.88	1988.90	269.68	.69
6562.00	94.00	268.32	4761.65	-12.18	-2020.78	2020.79	2020.81	269.65	.77

Measured Depth FT	Incl Angle Deg	Drift Direction Deg	True Vertical Depth	N-S FT	E-W FT	Vertical Section FT	C L O S U R E		Dogleg Severity Deg/100
							Distance FT	Direction Deg	
6594.00	93.03	269.55	4759.68	-12.78	-2052.71	2052.73	2052.75	269.64	4.89
6625.00	92.86	269.26	4758.09	-13.10	-2083.67	2083.68	2083.71	269.64	1.08
6657.00	92.86	269.26	4756.49	-13.51	-2115.63	2115.64	2115.67	269.63	.00
6689.00	92.86	269.25	4754.90	-13.93	-2147.58	2147.60	2147.63	269.63	.03
6721.00	92.51	268.95	4753.40	-14.43	-2179.54	2179.56	2179.59	269.62	1.44
6752.00	92.15	268.89	4752.14	-15.01	-2210.51	2210.53	2210.56	269.61	1.18
6784.00	91.98	268.81	4750.99	-15.65	-2242.48	2242.50	2242.54	269.60	.59
6816.00	92.15	268.66	4749.83	-16.36	-2274.46	2274.48	2274.52	269.59	.71
6848.00	92.33	268.80	4748.58	-17.07	-2306.42	2306.45	2306.49	269.58	.71
6879.00	92.68	268.80	4747.23	-17.72	-2337.39	2337.41	2337.45	269.57	1.13
6911.00	92.86	268.63	4745.68	-18.43	-2369.34	2369.37	2369.41	269.55	.77
6943.00	91.36	269.65	4744.50	-18.91	-2401.32	2401.34	2401.39	269.55	5.67
6974.00	91.19	270.01	4743.81	-19.01	-2432.31	2432.33	2432.38	269.55	1.28
7006.00	90.66	269.77	4743.30	-19.07	-2464.30	2464.33	2464.38	269.56	1.82
7038.00	90.13	269.88	4743.08	-19.17	-2496.30	2496.33	2496.38	269.56	1.69
7069.00	90.13	269.65	4743.00	-19.29	-2527.30	2527.33	2527.38	269.56	.74
7101.00	90.13	270.05	4742.93	-19.38	-2559.30	2559.33	2559.37	269.57	1.25
7133.00	88.90	269.10	4743.20	-19.61	-2591.30	2591.32	2591.37	269.57	4.86
7165.00	88.55	268.64	4743.91	-20.24	-2623.28	2623.31	2623.36	269.56	1.81
7196.00	89.16	268.45	4744.53	-21.03	-2654.27	2654.29	2654.35	269.55	2.06
7228.00	90.57	268.66	4744.61	-21.84	-2686.26	2686.28	2686.35	269.53	4.45
7259.00	91.89	268.63	4743.94	-22.57	-2717.24	2717.27	2717.33	269.52	4.26
7291.00	92.42	268.80	4742.74	-23.29	-2749.21	2749.24	2749.31	269.51	1.74
7322.00	92.07	268.89	4741.53	-23.91	-2780.18	2780.21	2780.28	269.51	1.17
7354.00	92.33	269.72	4740.30	-24.30	-2812.15	2812.18	2812.26	269.50	2.72
7385.00	92.59	270.22	4738.97	-24.32	-2843.12	2843.16	2843.23	269.51	1.82
7414.00	91.98	270.53	4737.81	-24.13	-2872.10	2872.13	2872.20	269.52	2.36
7446.00	92.07	270.42	4736.68	-23.86	-2904.08	2904.11	2904.18	269.53	.44
7477.00	91.45	271.48	4735.73	-23.35	-2935.06	2935.09	2935.15	269.54	3.96
7509.00	89.78	272.08	4735.39	-22.35	-2967.04	2967.07	2967.13	269.57	5.55
7540.00	89.60	272.28	4735.55	-21.17	-2998.02	2998.05	2998.09	269.60	.87
7572.00	89.78	272.31	4735.73	-19.89	-3029.99	3030.02	3030.06	269.62	.57
7594.00	89.96	272.39	4735.78	-18.99	-3051.97	3052.00	3052.03	269.64	.90
7625.00	90.22	272.31	4735.73	-17.72	-3082.95	3082.97	3083.00	269.67	.88

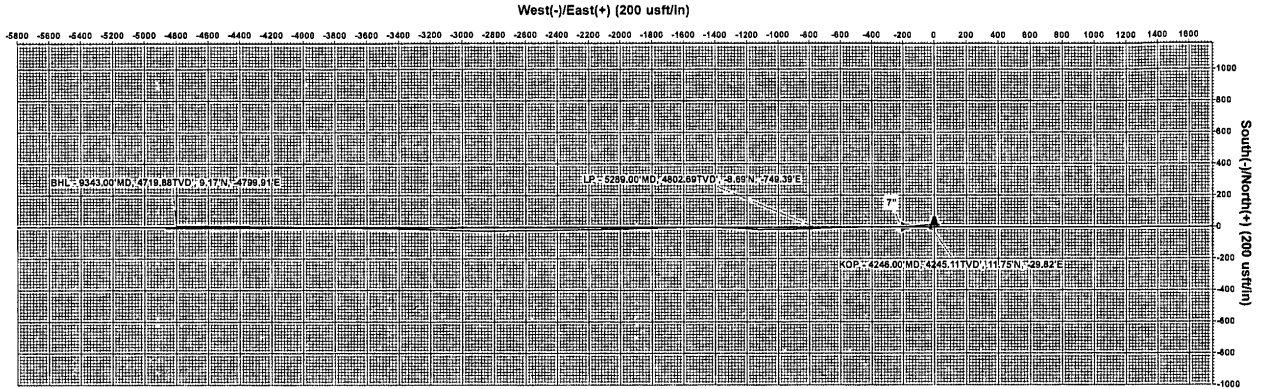
Measured Depth FT	Incl Angle Deg	Drift Direction Deg	True Vertical Depth	N-S FT	E-W FT	Vertical Section FT	C L O S U R E		Dogleg Severity Deg/100
							Distance FT	Direction Deg	
7656.00	90.40	271.93	4735.56	-16.57	-3113.93	3113.95	3113.97	269.70	1.36
7688.00	90.75	271.81	4735.24	-15.53	-3145.91	3145.93	3145.95	269.72	1.16
7719.00	91.01	271.61	4734.76	-14.60	-3176.89	3176.91	3176.92	269.74	1.06
7751.00	91.54	271.55	4734.05	-13.72	-3208.87	3208.89	3208.90	269.75	1.67
7782.00	91.01	271.28	4733.36	-12.96	-3239.85	3239.87	3239.88	269.77	1.92
7819.00	90.04	270.88	4733.02	-12.26	-3276.84	3276.86	3276.87	269.79	2.84
7850.00	90.13	271.17	4732.98	-11.71	-3307.84	3307.85	3307.86	269.80	.98
7882.00	88.81	270.67	4733.27	-11.19	-3339.83	3339.84	3339.85	269.81	4.41
7913.00	88.90	270.67	4733.89	-10.83	-3370.82	3370.84	3370.84	269.82	.29
7945.00	87.32	270.55	4734.95	-10.49	-3402.80	3402.82	3402.82	269.82	4.95
7976.00	87.05	270.42	4736.47	-10.23	-3433.77	3433.78	3433.78	269.83	.97
8008.00	87.23	270.01	4738.07	-10.11	-3465.73	3465.74	3465.74	269.83	1.40
8039.00	87.05	270.55	4739.61	-9.96	-3496.69	3496.70	3496.70	269.84	1.83
8070.00	87.41	270.78	4741.11	-9.60	-3527.65	3527.66	3527.66	269.84	1.38
8102.00	88.29	271.20	4742.31	-9.04	-3559.62	3559.63	3559.63	269.85	3.05
8133.00	88.64	271.70	4743.14	-8.26	-3590.60	3590.61	3590.61	269.87	1.97
8165.00	88.55	271.17	4743.93	-7.46	-3622.58	3622.59	3622.59	269.88	1.68
8196.00	88.20	271.46	4744.80	-6.75	-3653.56	3653.56	3653.56	269.89	1.47
8228.00	88.11	271.78	4745.84	-5.84	-3685.53	3685.53	3685.53	269.91	1.04
8259.00	89.16	271.72	4746.57	-4.90	-3716.51	3716.51	3716.51	269.92	3.39
8291.00	89.43	271.89	4746.97	-3.89	-3748.49	3748.49	3748.49	269.94	1.00
8322.00	90.48	271.40	4746.99	-3.00	-3779.47	3779.47	3779.47	269.95	3.74
8354.00	90.84	271.37	4746.62	-2.23	-3811.46	3811.46	3811.46	269.97	1.13
8385.00	91.19	271.32	4746.07	-1.50	-3842.45	3842.45	3842.45	269.98	1.14
8417.00	91.36	271.11	4745.36	-.82	-3874.43	3874.43	3874.43	269.99	.84
8447.00	90.48	270.34	4744.88	-.44	-3904.43	3904.42	3904.43	269.99	3.90
8479.00	90.48	270.13	4744.61	-.31	-3936.43	3936.42	3936.43	270.00	.66
8510.00	90.57	270.34	4744.33	-.18	-3967.42	3967.42	3967.42	270.00	.74
8542.00	90.40	270.27	4744.06	-.01	-3999.42	3999.42	3999.42	270.00	.57
8574.00	90.57	270.22	4743.79	.13	-4031.42	4031.42	4031.42	270.00	.55
8605.00	91.10	270.51	4743.33	.32	-4062.42	4062.41	4062.42	270.00	1.95
8637.00	91.36	270.43	4742.65	.59	-4094.41	4094.40	4094.41	270.01	.85
8668.00	91.63	271.02	4741.84	.98	-4125.39	4125.39	4125.39	270.01	2.09
8700.00	92.24	271.23	4740.76	1.61	-4157.37	4157.36	4157.37	270.02	2.02

Measured Depth FT	Incl Angle Deg	Drift Direction Deg	True Vertical Depth	N-S FT	E-W FT	Vertical Section FT	C L O S U R E		Dogleg Severity Deg/100
							Distance FT	Direction Deg	
8731.00	92.51	271.34	4739.47	2.30	-4188.34	4188.33	4188.34	270.03	.94
8763.00	92.42	271.50	4738.10	3.09	-4220.30	4220.29	4220.30	270.04	.57
8794.00	91.89	270.96	4736.93	3.76	-4251.27	4251.26	4251.27	270.05	2.44
8825.00	92.07	271.36	4735.86	4.38	-4282.24	4282.23	4282.24	270.06	1.41
8856.00	92.24	271.78	4734.70	5.23	-4313.21	4313.20	4313.21	270.07	1.46
8888.00	92.42	271.24	4733.39	6.08	-4345.17	4345.16	4345.17	270.08	1.78
8919.00	92.33	270.10	4732.11	6.44	-4376.14	4376.13	4376.15	270.08	3.69
8951.00	91.80	269.70	4730.96	6.38	-4408.12	4408.11	4408.13	270.08	2.07
8982.00	91.71	269.49	4730.01	6.16	-4439.11	4439.09	4439.11	270.08	.74
9014.00	92.07	269.60	4728.95	5.91	-4471.09	4471.07	4471.09	270.08	1.18
9045.00	92.33	270.03	4727.76	5.81	-4502.06	4502.05	4502.07	270.07	1.62
9077.00	92.77	270.18	4726.34	5.87	-4534.03	4534.02	4534.04	270.07	1.45
9109.00	91.98	270.89	4725.01	6.17	-4566.00	4565.99	4566.01	270.08	3.32
9140.00	92.15	270.47	4723.89	6.53	-4596.98	4596.97	4596.98	270.08	1.46
9172.00	90.84	270.69	4723.06	6.86	-4628.97	4628.95	4628.97	270.08	4.15
9203.00	90.75	270.71	4722.63	7.24	-4659.96	4659.95	4659.97	270.09	.30
9234.00	91.01	270.48	4722.15	7.56	-4690.96	4690.94	4690.96	270.09	1.12
9266.00	91.36	270.87	4721.49	7.94	-4722.95	4722.93	4722.95	270.10	1.64
STRAIGHT LINE PROJECTION TO BIT @ 9343' MD									
9343.00	91.36	270.87	4719.66	9.10	-4799.92	4799.90	4799.92	270.11	.00

Project: Eddy County, NM (NAD 27)
 Site: Eagle 4 State Com
 Well: #2H
 Wellbore: OH
 Plan: Plan #2 (#2H/OH)



Azimuths to Grid North
 True North: -0.13°
 Magnetic North: 7.70°
 Magnetic Field
 Strength: 48539.55nT
 Dip Angle: 50.04°
 Date: 4/20/2011
 Model: IGRF2010

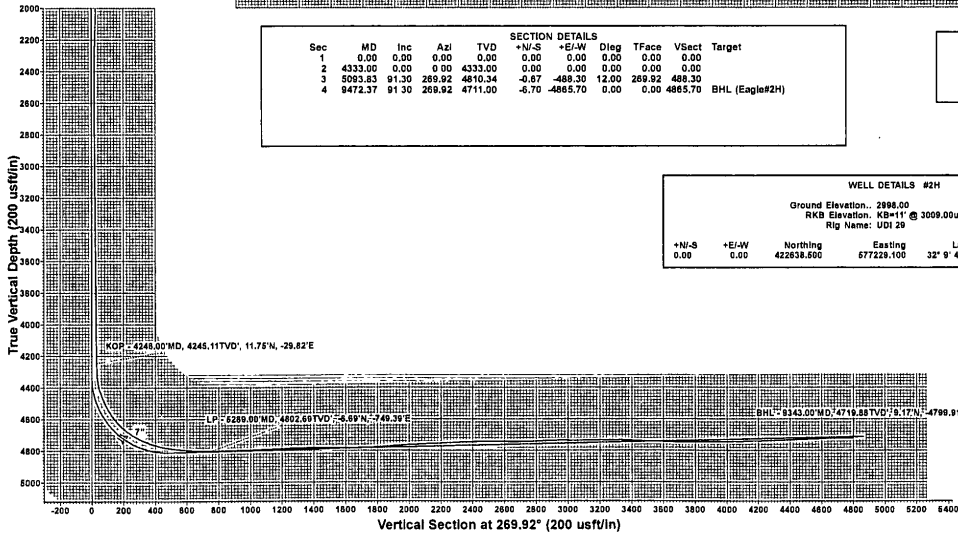


Sec	MD	Inc	Azi	TVD	+N-S	+E-W	Dleg	TFace	VSect	Target
1	0.00	0.00	0.00	0.00	0.00	0.00	0.00	0.00	0.00	
2	4333.00	0.00	0.90	4333.00	0.00	0.00	0.00	0.00	0.00	
3	5093.83	91.30	269.92	4810.34	-0.87	-488.30	12.00	269.92	488.30	
4	9472.37	91.30	269.92	4711.00	-6.70	-4865.70	0.00	0.00	4865.70	BHL (Eagle#2H)

WELLBORE TARGET DETAILS (MAP CO-ORDINATES)						
Name	TVD	+N-S	+E-W	Northing	Easting	Shape
BHL (Eagle#2H)	4711.00	-6.70	-4865.70	422531.800	572353.400	Point

PROJECT DETAILS: Eddy County, NM (NAD 27)
 Geodetic System: US State Plane 1927 (Exact solution)
 Datum: NAD 1927 (NADCON CONUS)
 Ellipsoid: Clarke 1866
 Zone: New Mexico East 3001
 System Datum: Mean Sea Level
 Local North: Grid

WELL DETAILS #2H						
Ground Elevation: 2996.00						
RKB Elevation: 4091.11 @ 3009.00usft (UDI 29)						
Rig Name: UDI 29						
+N-S	+E-W	Northing	Easting	Latitude	Longitude	Slot
0.00	0.00	422638.500	577228.100	32° 9' 42.134 N	104° 5' 1.551 W	



Plan Plan #2 (#2H/OH)			
Created By	Date	Checked	Date
Nate Bingham	16.01. May 16 2011		