

30-015-37556

MULTI-POINT SURFACE USE AND OPERATIONS PLAN
YATES PETROLEUM CORPORATION
Martha AIK Federal #14H
530' FSL & 200' FEL, Surface Hole
530' FSL & 1650' FWL, Bottom Hole
Section 11-T22S-R31E
Eddy County, New Mexico

This plan is submitted with Form 3160-3, Application for Permit to Drill, covering the above described well. The purpose of this plan is to describe the location of the proposed well, the proposed construction activities and operations plan, the magnitude of the surface disturbance involved and the procedures to be followed in rehabilitating the surface after completion of the operations, so that a complete appraisal can be made of the environmental effect associated with the operations.

1. EXISTING ROADS:

Exhibit A is a portion of the BLM map showing the well and roads in the vicinity of the proposed location. The proposed well site is located approximately 41 miles east of Carlsbad, New Mexico and the access route to the location is indicated in black on Exhibit A.

DIRECTIONS: Go east out of Carlsbad, New Mexico on Highway 62/180 for approximately 30 miles to Red Road (C-29). Turn south on Red Road and go approximately 8.2 miles. Turn right on an existing lease road and go west for approximately 1 mile. Turn left here and go south for approximately 1.8 miles. Entrance will be to the right going into the Southeast side of the location.

2. PLANNED ACCESS ROAD:

- A. The proposed new access will be approximately 20' or less in length from the point of origin to the southeast corner of the drilling pad.
- B. The new road will be 14 feet in width (driving surface) and will be adequately drained to control runoff and soil erosion.
- C. The new road will be bladed with drainage on both sides. No traffic turnouts will be needed.
- D. The route of the road is visible.
- E. Existing roads will be maintained in the same or better condition.

3. LOCATION OF EXISTING WELL:

- A. There is drilling activity within a one-mile radius of the well site.
- B. Exhibit D shows existing wells within a one-mile radius of the proposed well site.

4. LOCATION OF EXISTING AND/OR PROPOSED FACILITIES:

- A. There are production facilities located on the Martha AIK Federal #1 at the present time.
- B. In the event that the well is productive, the necessary production facilities will be installed on the drilling pad. If the well is productive of oil or gas a diesel self-contained unit will be used to provide the necessary power until an electric line can be built, if needed.

5. LOCATION AND TYPE OF WATER SUPPLY:

- A. It is planned to drill the proposed well with a brine water system. The water will be obtained from commercial sources and will be hauled to the location by truck over the existing and proposed roads shown in Exhibit A.

6. SOURCE OF CONSTRUCTION MATERIALS:

The dirt contractor will be responsible for finding a source of material for construction of road and pad and will obtain any permits that may be required.

7. METHODS OF HANDLING WASTE DISPOSAL:

- A. A closed loop system will be used to drill this well and reserve pits will not be used.
- B. The closed loop system will be constructed, maintained and closed in compliance with the State of New Mexico, Energy and Natural Resources Department, Oil Conservation Division—the “Pit Rule” 19.15.17 NMAC. Form C-144.
- C. Drilling fluids will be removed after drilling and completions are completed.
- D. Water produced during operations will be collected in tanks until hauled to an approved disposal system, or separate disposal application will be submitted.
- E. Oil produced during operations will be stored in tanks until sold.
- F. Current laws and regulations pertaining to the disposal of human waste will be complied with.
- G. All trash, junk, and other waste materials will be contained in trash cages or bins to prevent scattering and will be removed and deposited in an approved sanitary landfill. Burial on site is not approved.

8. ANCILLARY FACILITIES: NONE

9. WELLSITE LAYOUT:

- A. Exhibit B shows the relative location and dimensions of the well pad, the closed loop mud system, location of the drilling equipment, rig orientation and access road approach. The proposed well location will be approximately 350' x 300'. All of the location will be constructed within the 600' x 600' staked area.
- B. The closed loop system will be constructed, maintained and closed in compliance with the State of New Mexico, Energy and Natural Resources Department, Oil Conservation Division—the “Pit Rule” 19.15.17 NMAC.
- C. A 600' x 600' area has been staked and flagged.

10. PLANS FOR RESTORATION:

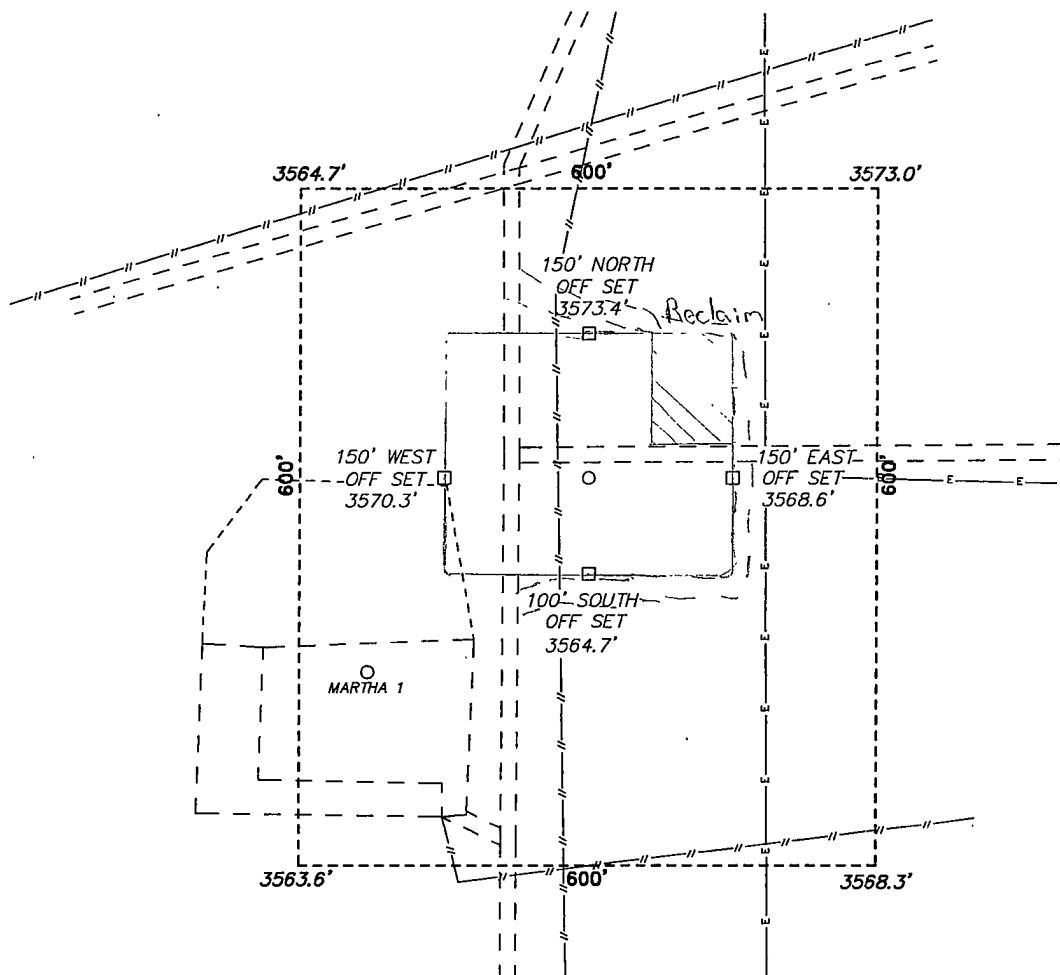
- A. After finishing drilling and/or completion operations, all equipment and other material not needed for further operations will be removed. The location will be cleaned of all trash and junk to leave the well site in as aesthetically pleasing a condition as possible.
- B. Unguarded pits, if any, containing fluids will be fenced until they have dried and been leveled.
- C. If the proposed well is plugged and abandoned, all rehabilitation and/or vegetation requirements of the Bureau of Land Management will be complied with and will be accomplished as expeditiously as possible. All pits will be filled level after they have evaporated and dried. Pit reclamation will meet 19.15.17 requirements.

YATES PETROLEUM CORPORATION
Martha AIK Federal #14H
530' FSL & 200' FEL, Sec. 11-22S-31E, Surface Hole
530' FSL & 1650' FWL, Sec. 11-22S-31E, Bottom Hole
Eddy County, New Mexico

Plans for Interim and Final Surface Reclamation.

1. Well location will be contoured to resemble the original topography as closely as possible. Surface reclamation measures will be taken to avoid new erosion on the well location and the area surrounding the well location. These measures will be overseen by Yates' personnel following a structured plan for the reclamation of each individual site.
2. Major drainage systems will be avoided as determined at the onsite with the BLM. Minor drainages may be rerouted around the well site within the 600' x 600' cleared area to avoid moving the well location.
3. Segregation of topsoil or like soils will be placed in low lift rows rather than in a stockpile just off the caliche well pad. Placement of these lift rows will be determined at the BLM onsite or at the time of construction by Yates Personnel.
4. Yates will use prudent oil field practices when constructing well locations and related facilities. Yates personnel will determine the size of the well location needed for safe working conditions for personnel during all aspects on the drilling and production process.
5. Back fill requirements for above ground reserve pits will be met by using cut, fill, and contouring of available top soil and like soils from the pit area. Should additional material be needed it will be brought in from a BLM approved source.
6. All topsoil will be spread over the area reclaimed during interim reclamation using a front end loader. For final reclamation enough topsoil will be evenly distributed between the interim reclaimed area and the final reclaimed area. This method of soil stabilization should help maintain the productivity and viability of the topsoil.
7. Soil treatments will be determined at the time of final reclamation by Yates' Environmental Specialist or other designated personnel to meet BLM final reclamation goals.
8. Reseeding of disturbed areas will be accordance with the seed mixtures attached to the approved APD as Conditions of Approval. Planting and soil preparation will be done during the rainy season between June 1st and September 1st.
9. Yates' personnel will control weeds during the productive period through final abandonment of the well. Yates may also use the option to hire a third party to be in charge of weed control or participate in the Chaves Soil and Water District program to pool monies for weed control.
10. Well pads, roads and related facilities with caliche or other surfacing material will be picked up or turned over at the time of final abandonment. These materials may be used on other projects in the area if possible or placed back in the caliche pit or other designated site. Buried pipelines will be left in place after being bled down and purged. Above surface support equipment will be removed or cut down below plow depth and removed. Pipeline right-of-ways will be reseeded according to BLM Best Management Practices.

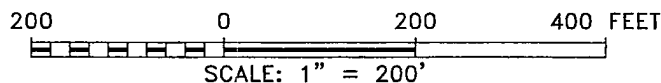
SECTION 11, TOWNSHIP 22 SOUTH, RANGE 31 EAST, N.M.P.M.,
EDDY COUNTY, NEW MEXICO.



Martha AIK Federal #14H
530' FSL & 200' FEL Surface Hole
530' & 1650' FWL Bottom Hole
Section 11- T22S-R31E
Eddy County, NM
Exhibit A

YATES PETROLEUM CORP.
MARTHA "AIK" FEDERAL #14H
ELEV. - 3570'

Lat - N 32°24'00.92"
Long - W 103°44'26.65"
NMSPCE- N 509850.849
E 724234.624
(NAD-83)



YATES PETROLEUM CORP.

REF: MARTHA "AIK" FEDERAL #14H / WELL PAD TOPO

THE MARTHA "AIK" FEDERAL #14H LOCATED 530'
FROM THE SOUTH LINE AND 200' FROM THE EAST LINE OF
SECTION 11, TOWNSHIP 22 SOUTH, RANGE 31 EAST,
N.M.P.M., EDDY COUNTY, NEW MEXICO.

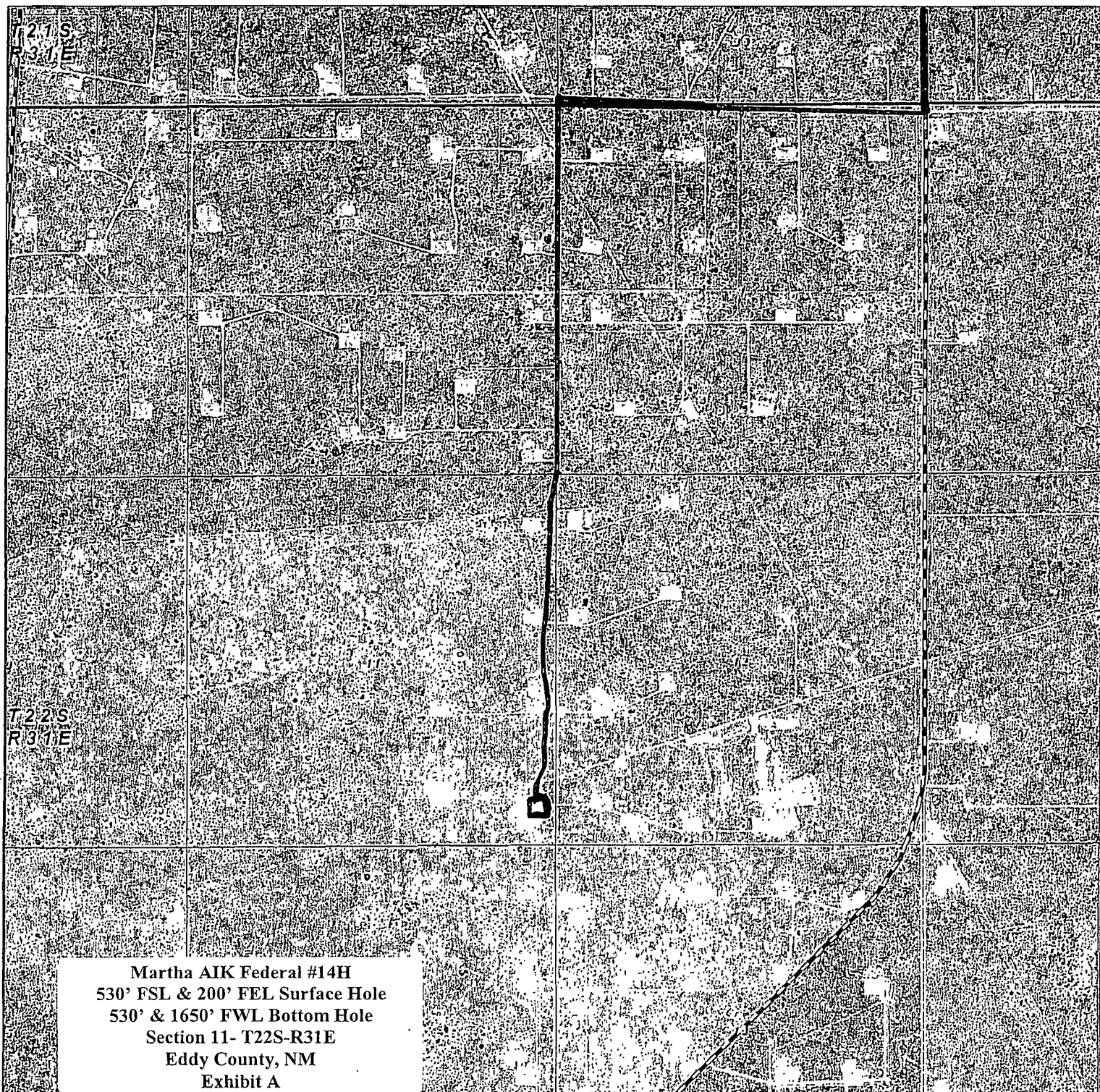
BASIN SURVEYS P.O. BOX 1786-HOBBS, NEW MEXICO

W.O. Number: 23912 Drawn By: J. SMALL

Date: 03-10-2011 Disk: JMS 23912

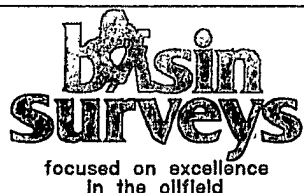
Survey Date: 01-08-2011

Sheet 1 of 1 Sheets



Martha AIK Federal #14H
530' FSL & 200' FEL Surface Hole
530' & 1650' FWL Bottom Hole
Section 11- T22S-R31E
Eddy County, NM
Exhibit A

MARTHA "AIK" FEDERAL #14H
Located 530' FSL and 200' FEL
Section 11, Township 22 South, Range 31 East,
N.M.P.M., Eddy County, New Mexico.



P.O. Box 1786
1120 N. West County Rd.
Hobbs, New Mexico 88241
(575) 393-7316 - Office
(575) 392-2206 - Fax
basinsurveys.com

W.O. Number: JMS 23912

Scale: 1" = 2000'

YELLOW TINT - USA LAND
BLUE TINT - STATE LAND
NATURAL COLOR - FEE LAND



YATES
PETROLEUM
CORP.