

DISTRICT I  
1625 N. French Dr., Hobbs, NM 88240  
DISTRICT II  
1301 W. Grand Avenue, Artesia, NM 88210

DISTRICT III  
1000 Rio Brazos Rd., Aztec, NM 87410

DISTRICT IV  
1220 S. St. Francis Dr., Santa Fe, NM 87505

State of New Mexico  
Energy, Minerals and Natural Resources Department

Form C-102  
Revised July 16, 2010

Submit one copy to appropriate  
District Office

OIL CONSERVATION DIVISION

1220 South St. Francis Dr.  
Santa Fe, New Mexico 87505

☐ AMENDED REPORT

WELL LOCATION AND ACREAGE DEDICATION PLAT

API Number <b>30-015-39449</b>	Pool Code <b>97286</b>	Pool Name <b>EMPIRE WOLF CAMP, NW</b>
Property Code <b>38831</b>	Property Name <b>GOLLY "BRG" FEDERAL COM</b>	Well Number <b>1H</b>
OGRID No. <b>025575</b>	Operator Name <b>YATES PETROLEUM CORP.</b>	Elevation <b>3433'</b>

Surface Location

UL or lot No.	Section	Township	Range	Lot Idn	Feet from the	North/South line	Feet from the	East/West line	County
P	34	16 S	27 E		550	SOUTH	1000	EAST	EDDY

Bottom Hole Location If Different From Surface

UL or lot No.	Section	Township	Range	Lot Idn	Feet from the	North/South line	Feet from the	East/West line	County
P	35	16 S	27 E		940	SOUTH	330	EAST	EDDY
Dedicated Acres <b>200</b>	Joint or Infill	Consolidation Code	Order No.						

NO ALLOWABLE WILL BE ASSIGNED TO THIS COMPLETION UNTIL ALL INTERESTS HAVE BEEN CONSOLIDATED  
OR A NON-STANDARD UNIT HAS BEEN APPROVED BY THE DIVISION

RECEIVED

SEP 06 2011

NMOC D ARTESIA

OPERATOR CERTIFICATION

I hereby certify that the information contained herein is true and complete to the best of my knowledge and belief, and that this organization either owns a working interest or unleased mineral interest in the land including the proposed bottom hole location or has a right to drill this well at this location pursuant to a contract with an owner of such a mineral or working interest, or to a voluntary pooling agreement or a compulsory pooling order heretofore entered by the division.

Signature Clifton May Date 6/17/11

Printed Name CLIFTON MAY

Email Address CLIFF@YATESPETROLEUM.COM

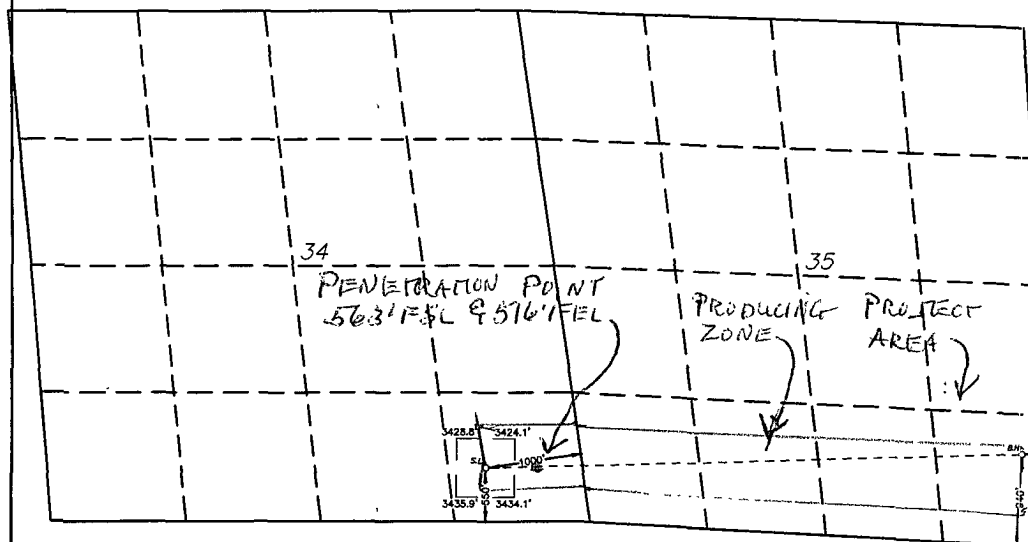
SURVEYOR CERTIFICATION

I hereby certify that the well location shown on this plat was plotted from field notes of actual surveys made by me or under my supervision, and that the same is true and correct to the best of my belief.

Date Surveyed SEP 19, 2011  
Signature & Seal of Professional Surveyor  
MARY L. JONES  
Professional Land Surveyor  
No. 36839

Certificate No. Gary L. Jones 7977

Basin Surveys 23839



**SURFACE LOCATION**  
Lat - N 32°52'23.86"  
Long - W 104°15'33.23"  
NMSPCE- N 681446.517  
E 564088.073  
(NAD-83)

**PROPOSED BOTTOM HOLE LOCATION**  
Lat - N 32°52'25.18"  
Long - W 104°14'28.04"  
NMSPCE- N 681583.599  
E 569647.386  
(NAD-83)